

# V&V Reference Report

## L2 ASCDS Version : 7.6.9

Observation 2934 - L2 Version 001  
Chandra X-Ray Center

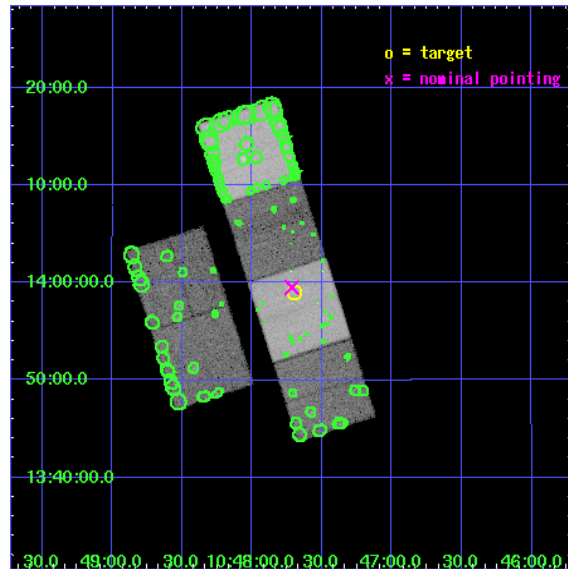
L2 Processing Date : Oct 18 2006

## Contents

<b>1</b>	<b>Front</b>	<b>2</b>
<b>2</b>	<b>OBI</b>	<b>3</b>
2.1	OBI . . . . .	3
2.1.1	Images . . . . .	3
2.1.2	Bias . . . . .	3
2.1.3	Parameters . . . . .	4
2.1.4	Events . . . . .	4
2.2	Compared Parameters . . . . .	5
2.3	Aspect . . . . .	6
2.4	Star Slots . . . . .	9
2.4.1	Slot 3 . . . . .	9
2.4.2	Slot 4 . . . . .	10
2.4.3	Slot 5 . . . . .	11
2.4.4	Slot 6 . . . . .	12
2.4.5	Slot 7 . . . . .	13
2.5	FID Slots . . . . .	14
2.5.1	Slot 0 . . . . .	14
2.5.2	Slot 1 . . . . .	15
2.5.3	Slot 2 . . . . .	16
<b>3</b>	<b>Point Sources</b>	<b>17</b>
<b>A</b>	<b>Summary</b>	<b>18</b>
A.1	Status . . . . .	18
A.2	Comments . . . . .	18

# 1 Front

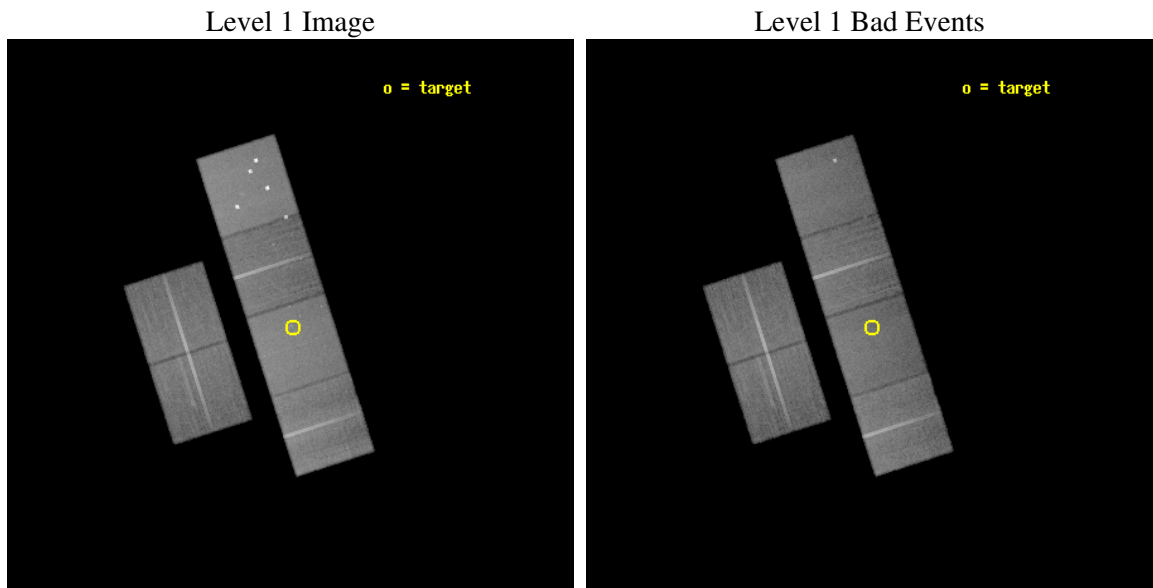
seq_num	600271
obs_id	2934
title	A POSSIBLE NEW DISTANCE INDICATOR USING LOW MASS X-RAY BINARIES IN THE NEAREST EARLY-TYPE GALAXIES
observer	Dr. Jimmy Irwin
object	NGC3377
dtcycle	0
cycle	P
ra_targ	161.924167
dec_targ	13.983333
ra_nom	161.92881838759
dec_nom	13.99186137016
roll_nom	72.228735463679
revision	3
ontime	40150.399850428
livetime	39641.991311854
ontime2	40143.917899847
ontime3	40147.158870131
ontime5	40150.399850428
ontime6	40143.917869985
ontime7	40150.399850428
ontime8	40150.399850428
l2events	381467



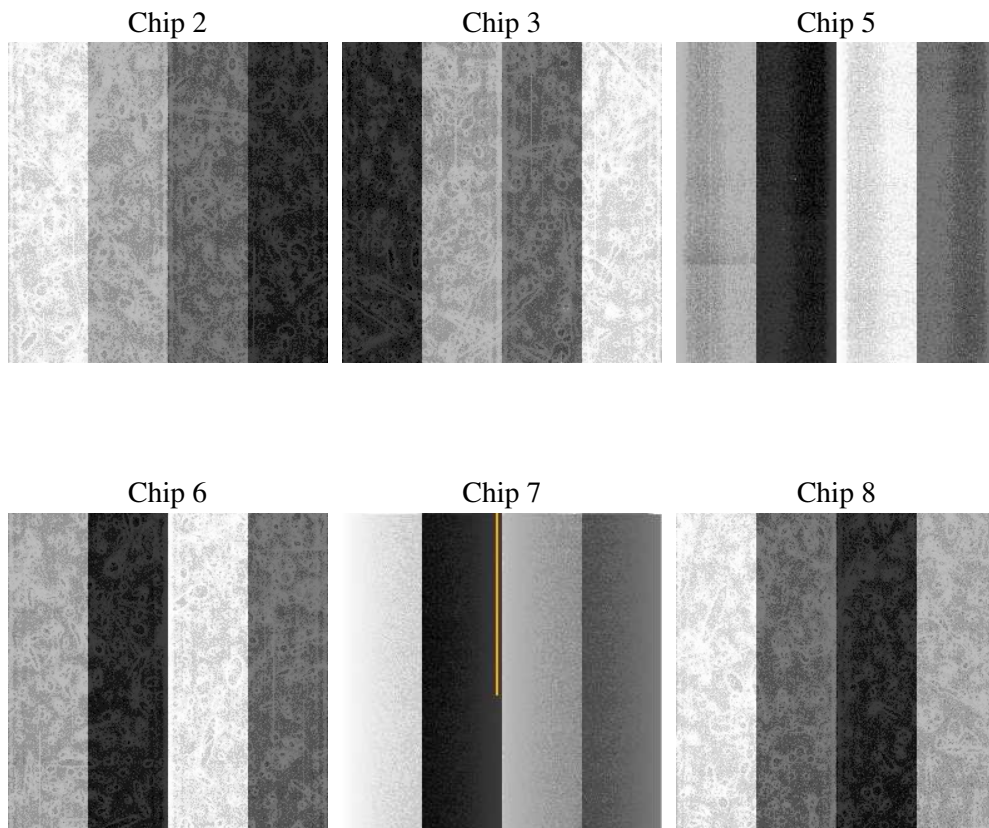
## 2 OBI

### 2.1 OBI

#### 2.1.1 Images



#### 2.1.2 Bias



### 2.1.3 Parameters

obi_num	0
ascdsver	7.6.9
caldsver	3.2.3
date	2006-10-18T21:43:57
revision	3

sched_exp_time	40000.000000
ontime	40178.770379901
ontime2	40172.28842932
ontime3	40175.529399604
ontime5	40178.770399839
ontime6	40172.288399458
ontime7	40178.770379901
ontime8	40178.770379901
l1events	1819539

### 2.1.4 Events

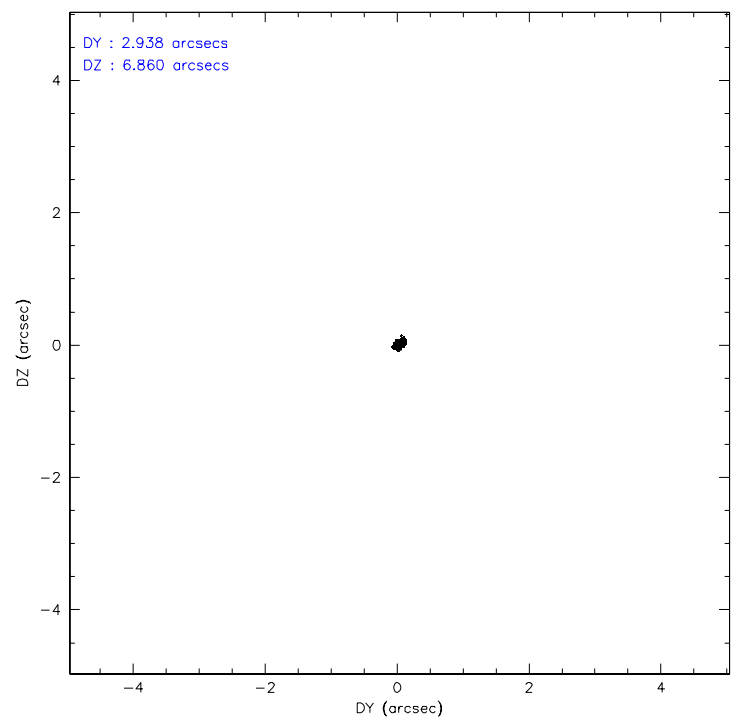
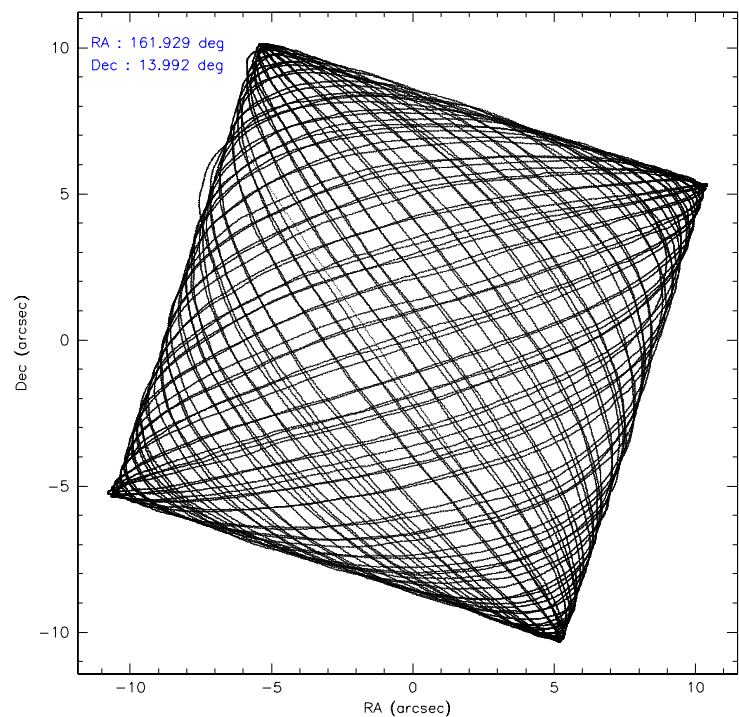
	ccd 2	ccd 3	ccd 5	ccd 6	ccd 7	ccd 8
level 1 events	258986	246138	402438	258714	334731	318532
rejected events	229829	217473	206640	228854	206995	253915
rejected %	88%	88%	51%	88%	61%	79%

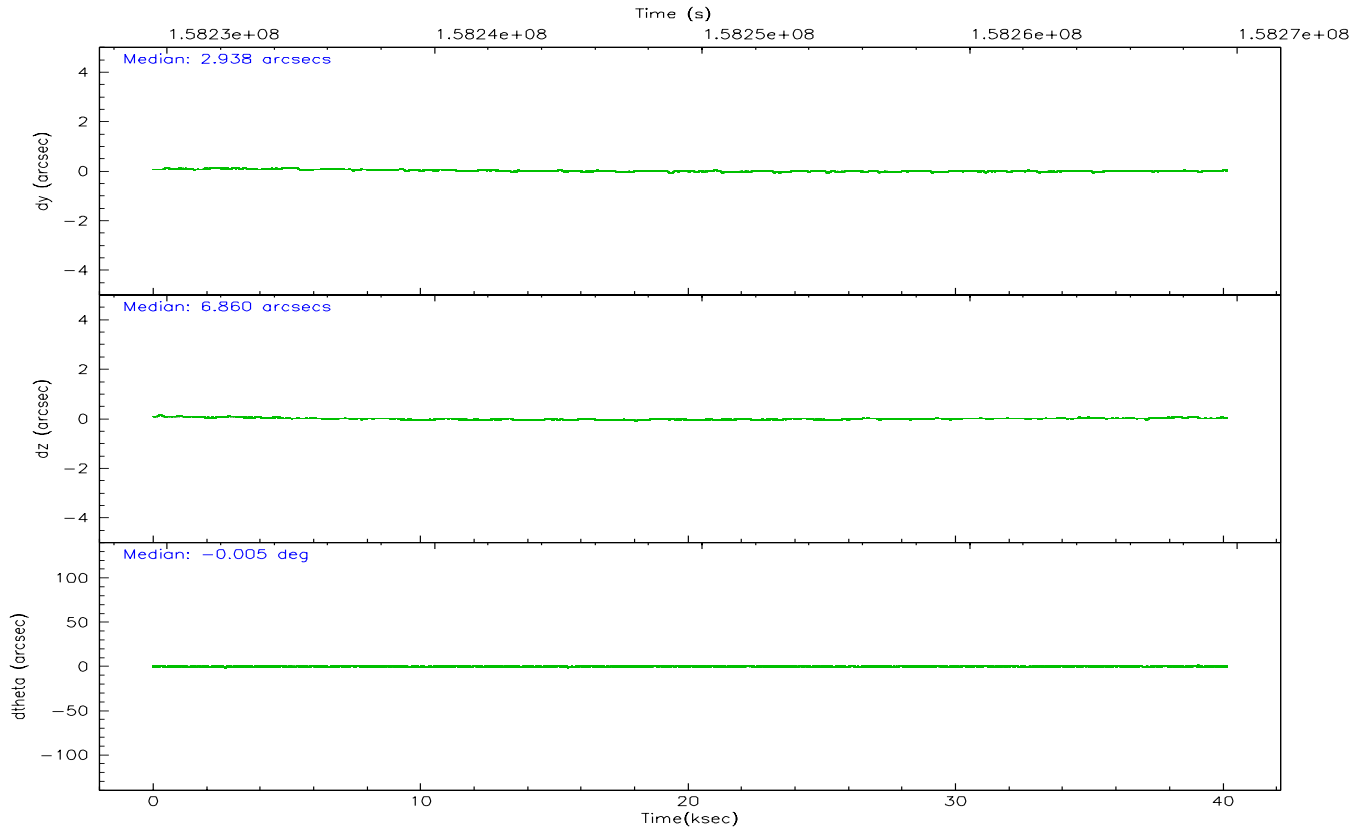
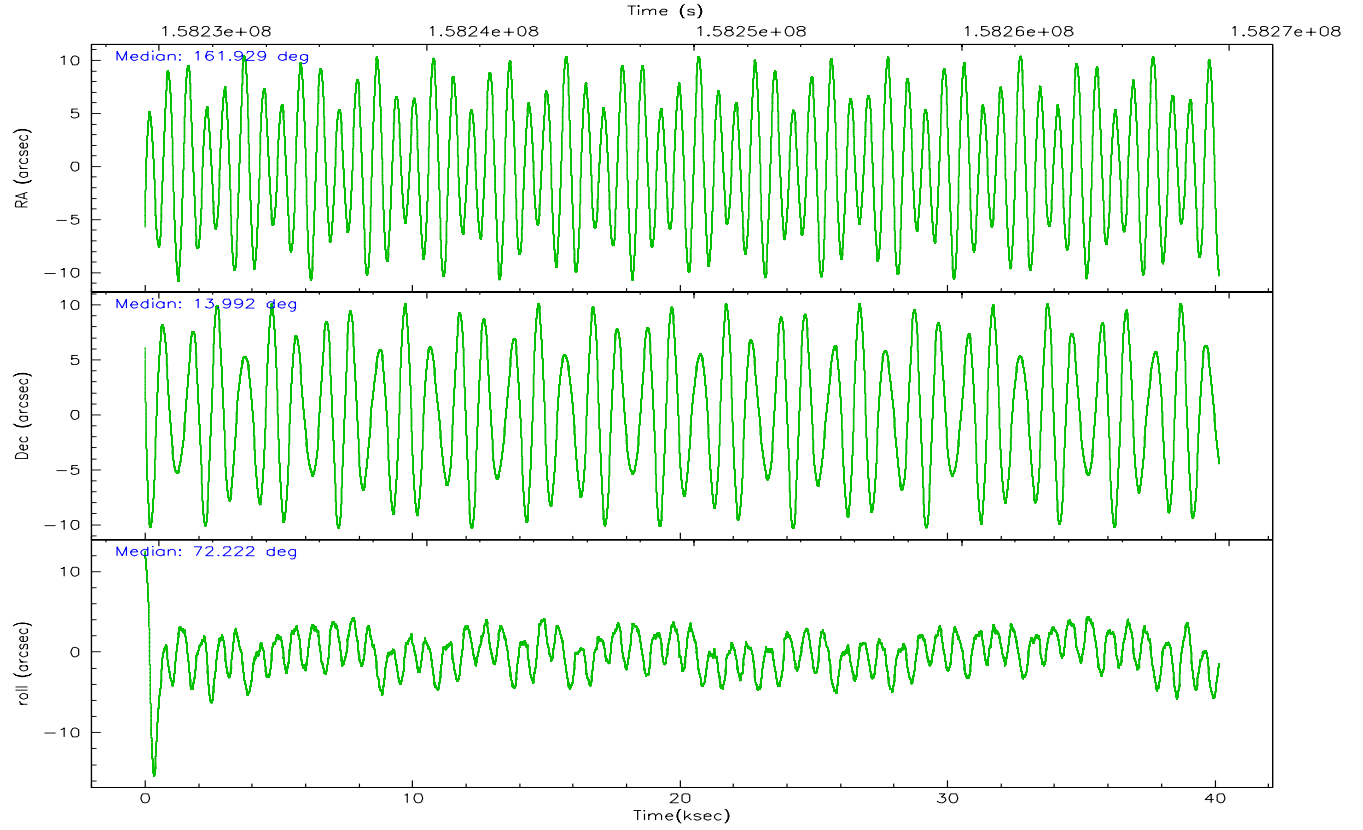
	ccd 2	ccd 3	ccd 5	ccd 6	ccd 7	ccd 8
grade 0 events	12705	12667	45950	12081	7702	20860
	4%	5%	11%	4%	2%	6%
grade 1 events	130	135	2437	112	194	193
	0%	0%	0%	0%	0%	0%
grade 2 events	6027	5387	51220	6199	31815	14080
	2%	2%	12%	2%	9%	4%
grade 3 events	2808	2873	3696	2898	6607	6904
	1%	1%	0%	1%	1%	2%
grade 4 events	2850	2832	3455	2849	6458	6364
	1%	1%	0%	1%	1%	1%
grade 5 events	9992	10392	17557	11480	22300	14856
	3%	4%	4%	4%	6%	4%
grade 6 events	4789	4927	91623	5850	75228	16430
	1%	2%	22%	2%	22%	5%
grade 7 events	219685	206925	186500	217245	184427	238845
	84%	84%	46%	83%	55%	74%

## 2.2 Compared Parameters

Parameter	Planned	Actual	Parameter	Planned	Actual
Instrument	ACIS	ACIS	Obspar format version number	6	6
Detector	ACIS-235678	ACIS-235678	Obspar file type	PREDICTED	ACTUAL
Grating	NONE	NONE	Obspar update status	NONE	UPDATED
Data mode	VFAINT	VFAINT	Number of optional ACIS chips dropped	0	0
Observation mode	POINTING	POINTING	On-chip summing requested	N	N
Pointing RA	161.935143	161.9288183875932	Subarray requested	NONE	NONE
Pointing Dec	13.965347	13.99186137015984	Alternating exposures requested	N	N
Pointing Roll	72.070582	72.2287354636789	Primary exposure time	0.000000	3.2
SIM focus pos (mm)	-0.684267	-0.6828225247311905			
SIM defocus (mm)	0	0.001444936568705701			
SIM translation stage pos (mm)	-190.132523	-190.1400660498719			
SIM translation stage offset (mm)	0	0.00754346686406393			
Observation start time	158229629.184000	158228561.3866			
Observation start date	2003-01-06T08:39:25	2003-01-06T08:22:41			
Observation end time	158269629.184000	158270192.78834			
Observation end date	2003-01-06T19:46:05	2003-01-06T19:56:32			
Read mode	TIMED	TIMED			

2.3 Aspect





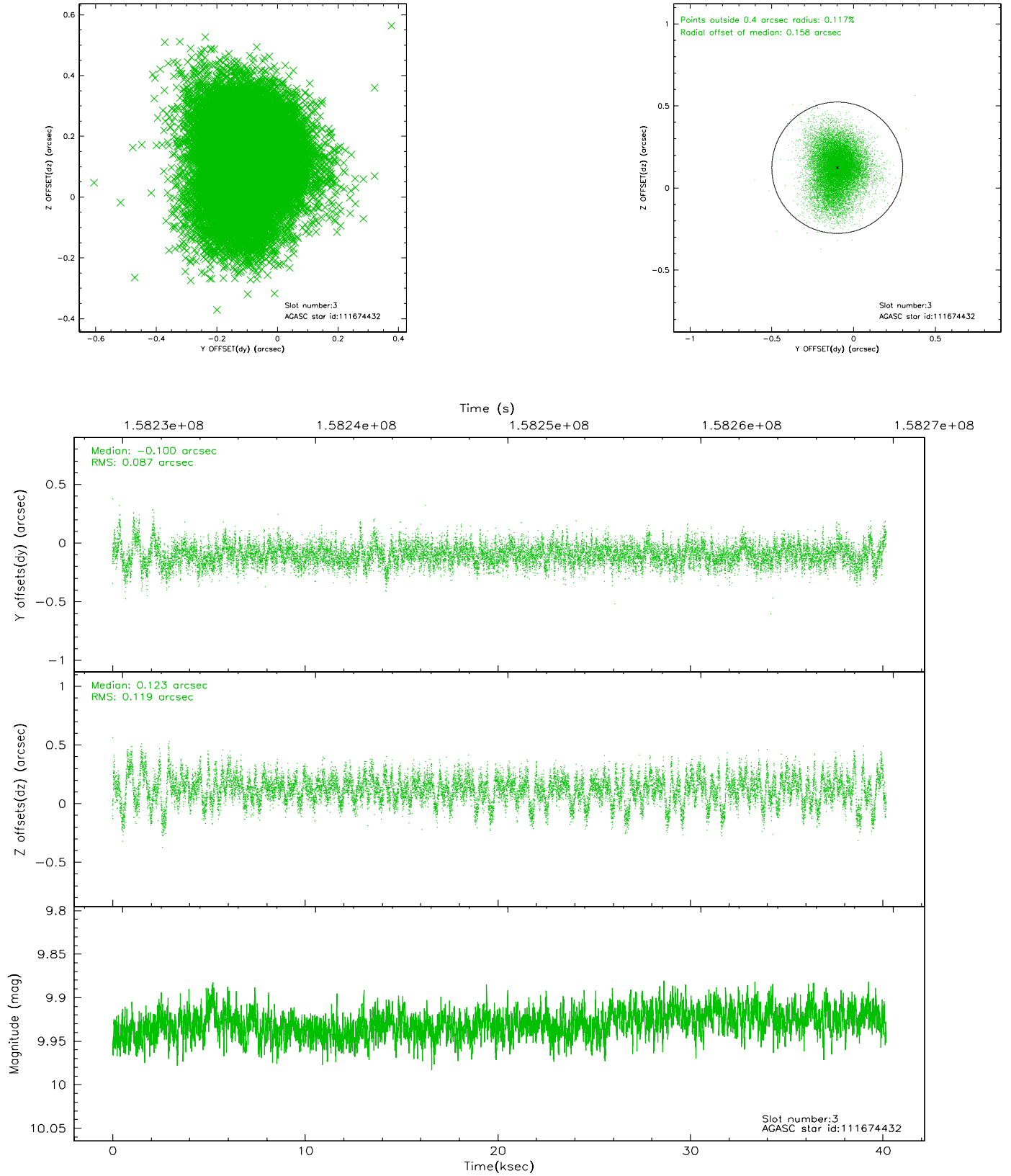
### Slot Statistics

slot	status	id	mag	n_pts	med_dy	med_dz	dr1	dr2	ra	dec	mean_y	mean_z
0	FID	ACIS-S-2	7.12	9794	-0.018	0.019	0.008	0.015	0.000000	0.000000	-755.59	-1728.01
1	FID	ACIS-S-4	7.21	9792	-0.039	0.004	0.006	0.013	0.000000	0.000000	2157.64	180.47
2	FID	ACIS-S-5	7.24	9793	0.026	-0.014	0.006	0.010	0.000000	0.000000	-1808.39	174.10
3	GUIDE	111674432	9.93	19581	-0.100	0.123	0.155	0.262	162.395995	14.201794	1306.70	-1267.13
4	GUIDE	111675416	8.17	19589	-0.205	0.106	0.076	0.156	162.486800	14.282305	1680.46	-1478.70
5	GUIDE	111683520	8.65	19587	0.136	-0.193	0.083	0.152	161.788539	13.663820	-1190.18	153.54
6	GUIDE	111677568	10.15	19573	0.234	-0.151	0.169	0.293	161.080914	13.552165	-2330.58	2388.09
7	GUIDE	111674872	10.21	19504	-0.070	0.110	0.228	0.637	162.587476	14.320410	1919.85	-1769.77

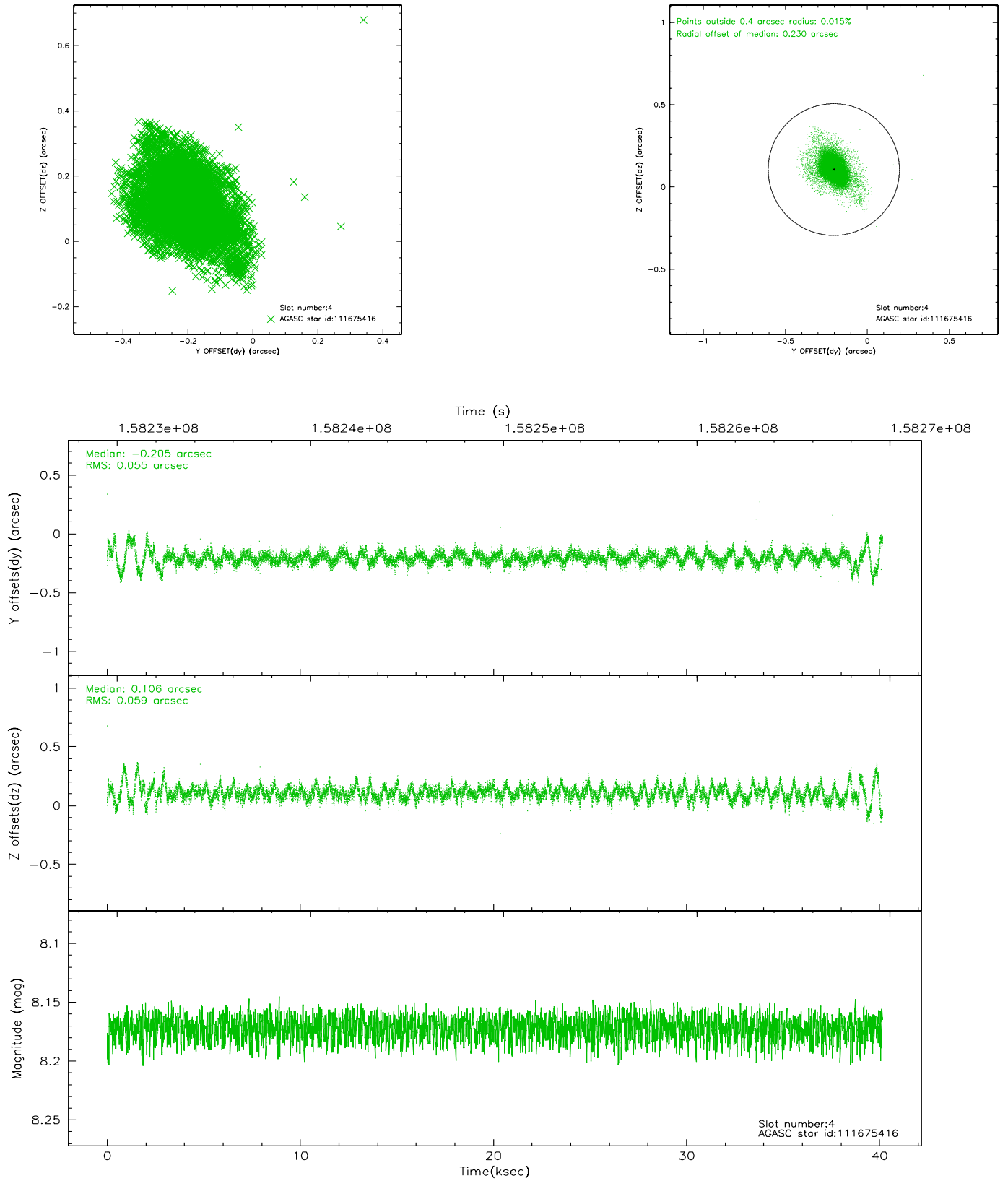


## 2.4 Star Slots

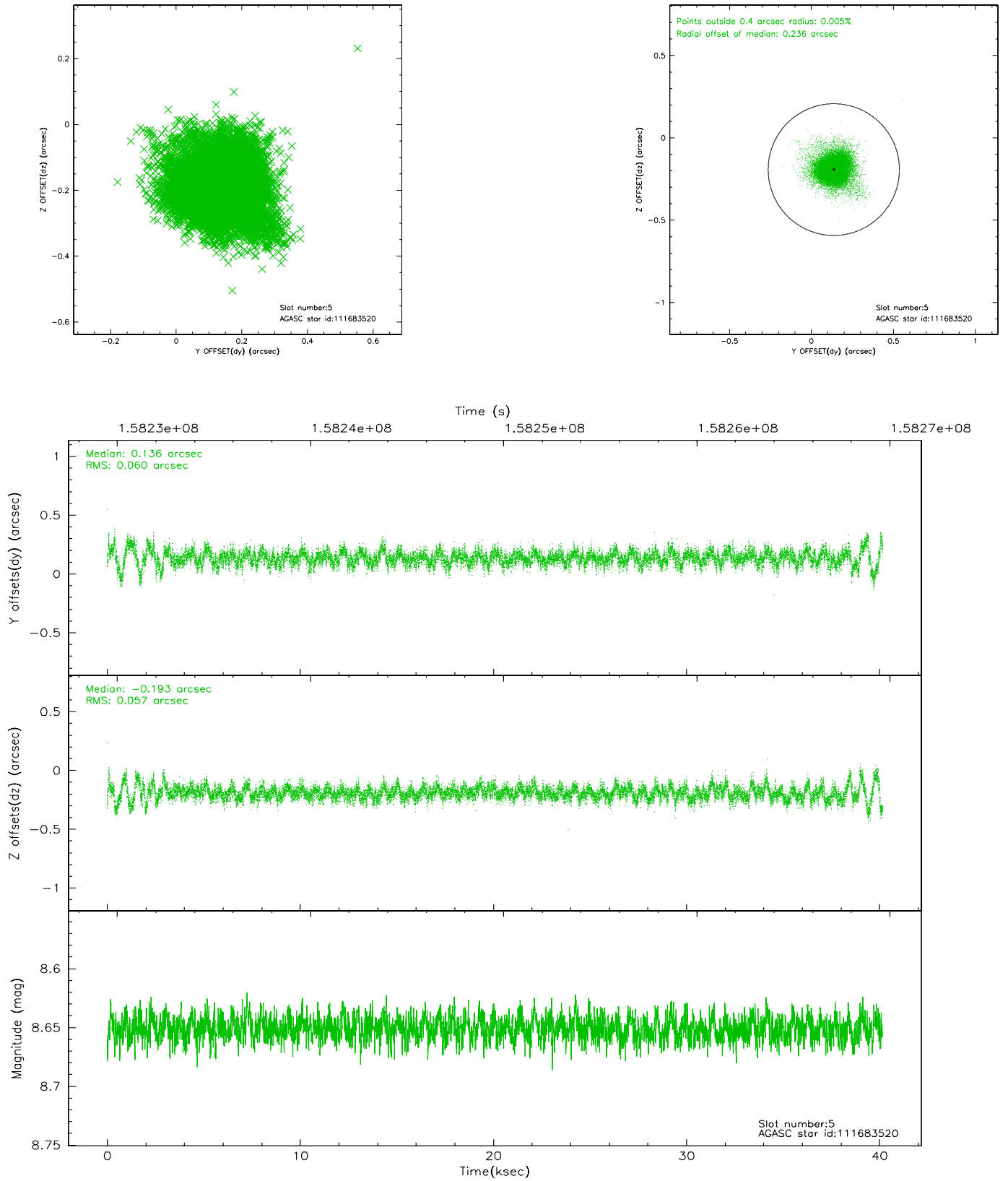
### 2.4.1 Slot 3



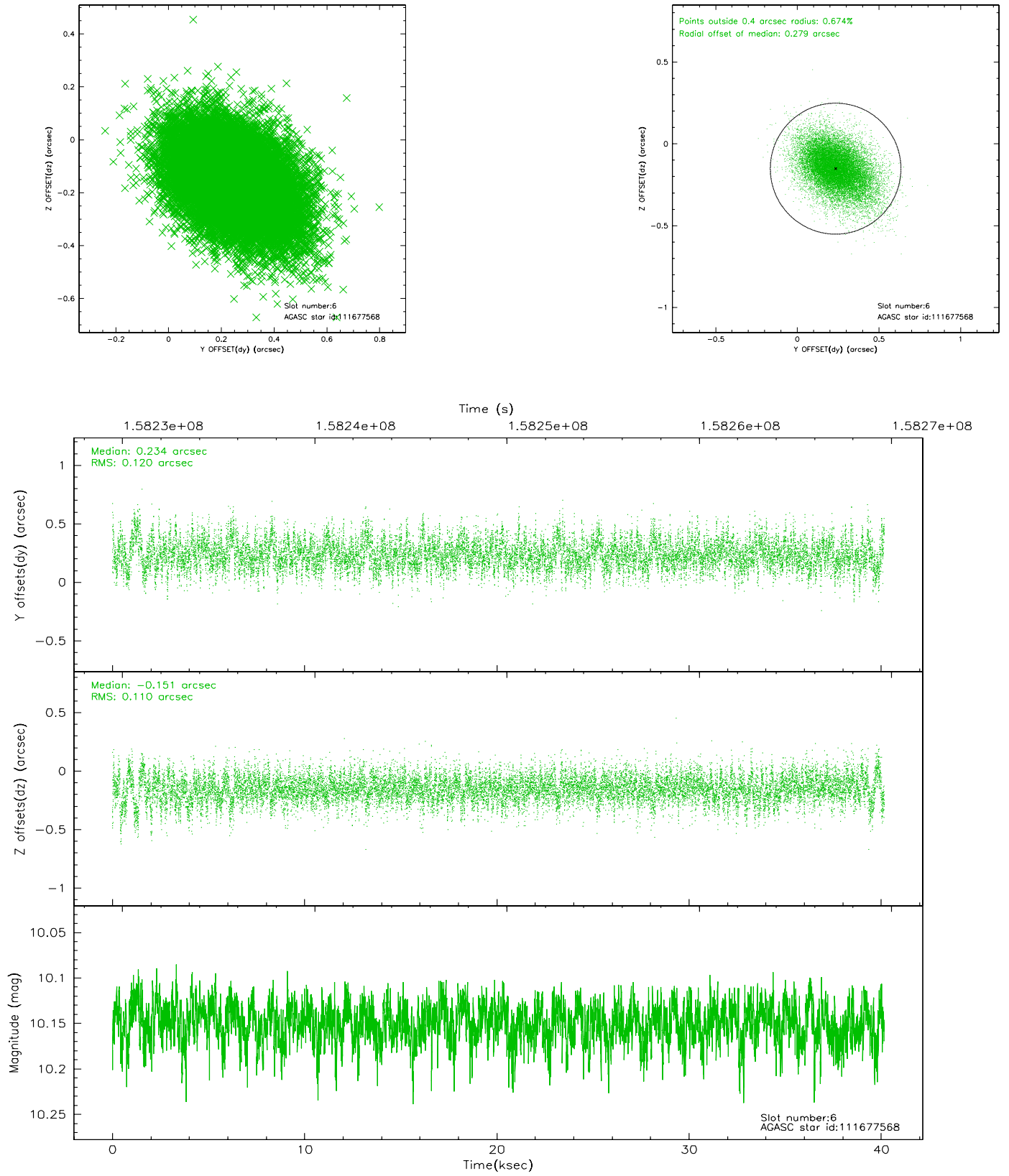
## 2.4.2 Slot 4



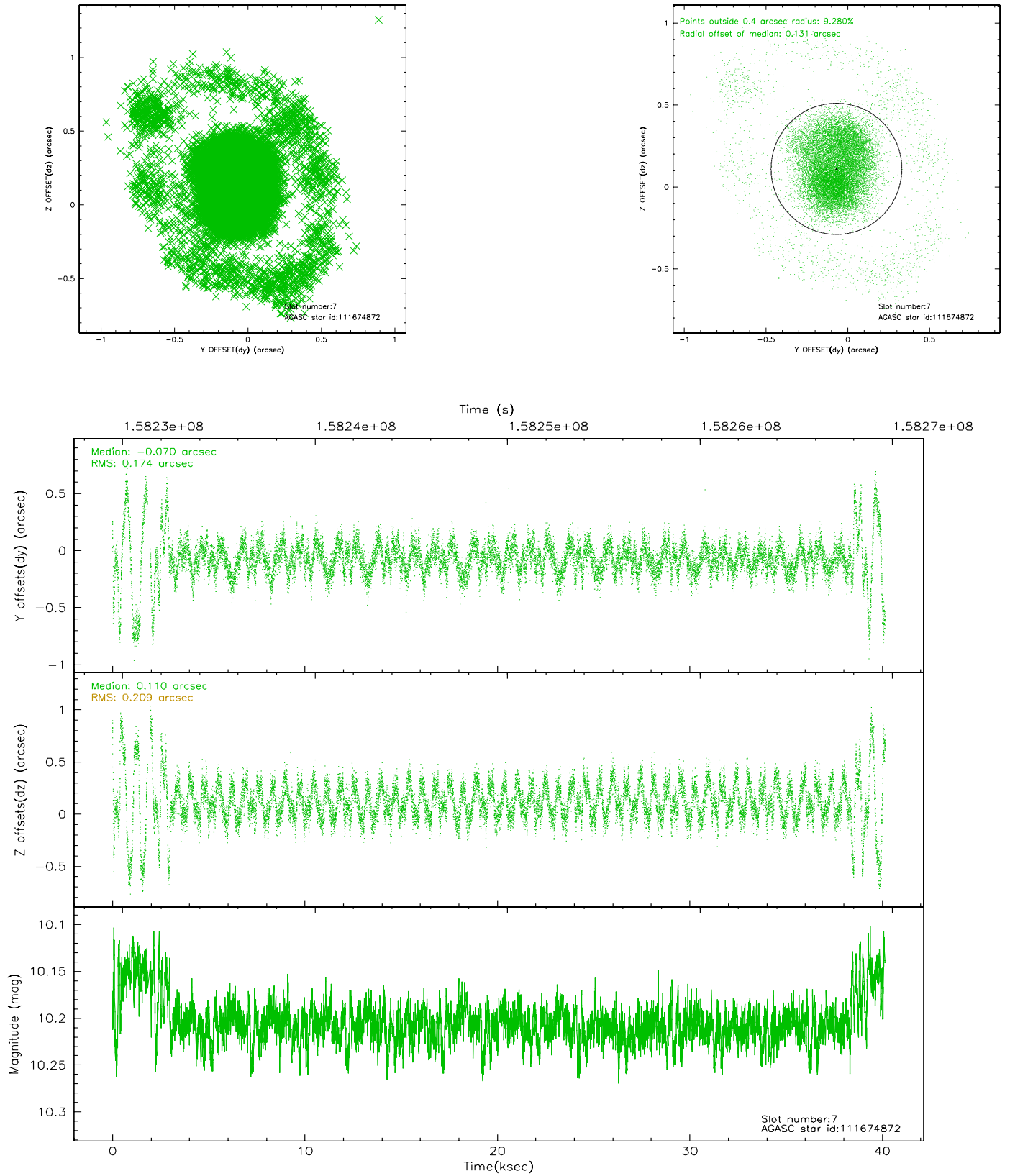
### 2.4.3 Slot 5



## 2.4.4 Slot 6

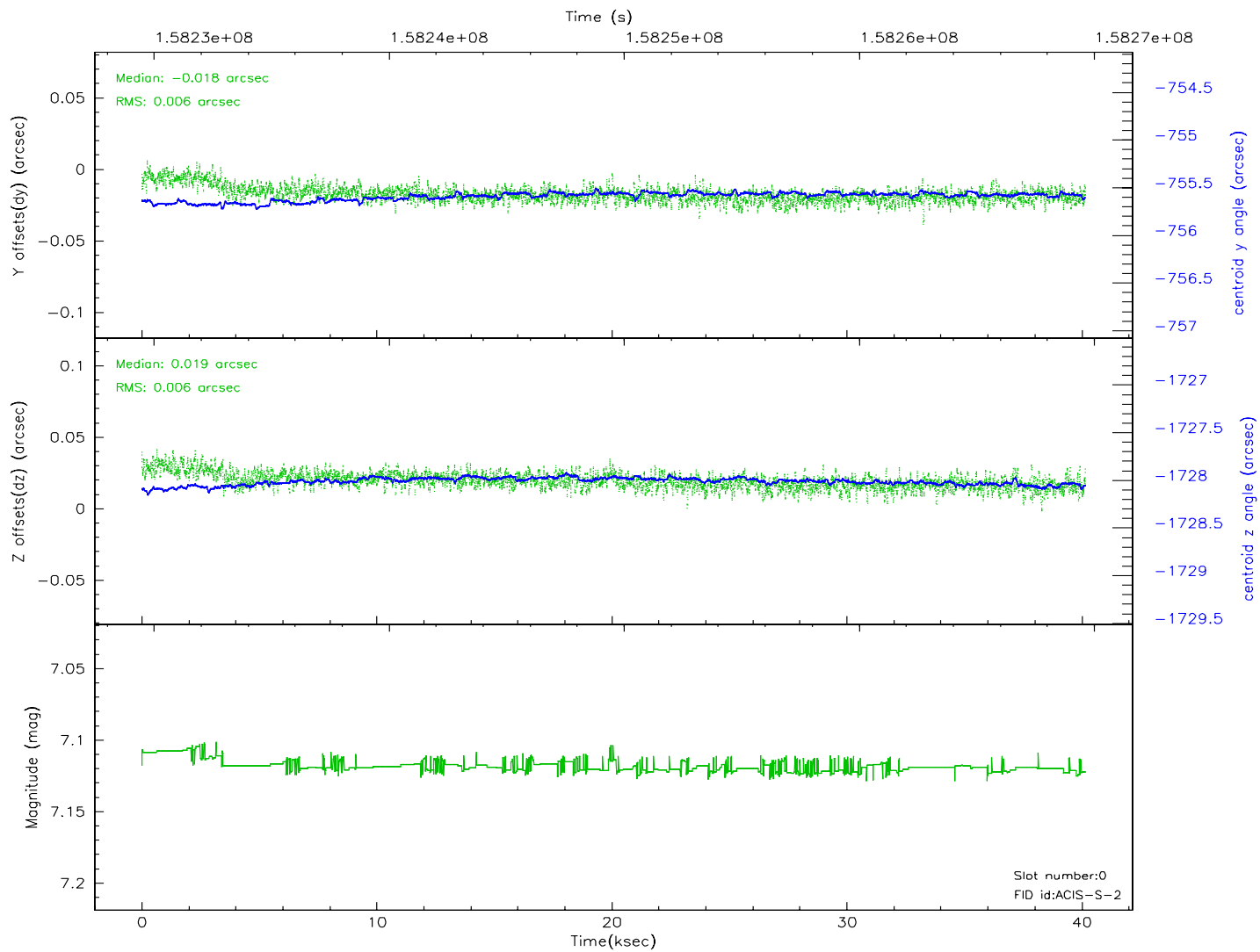
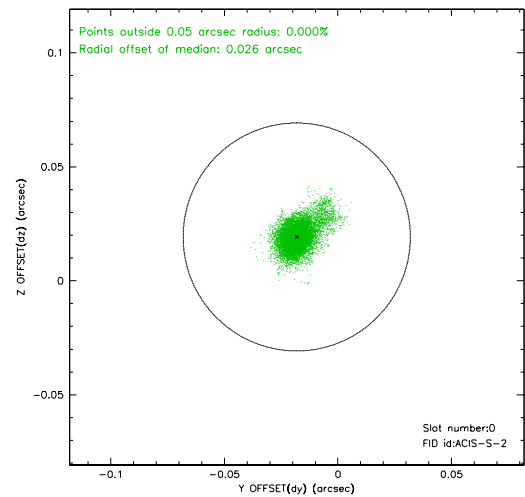
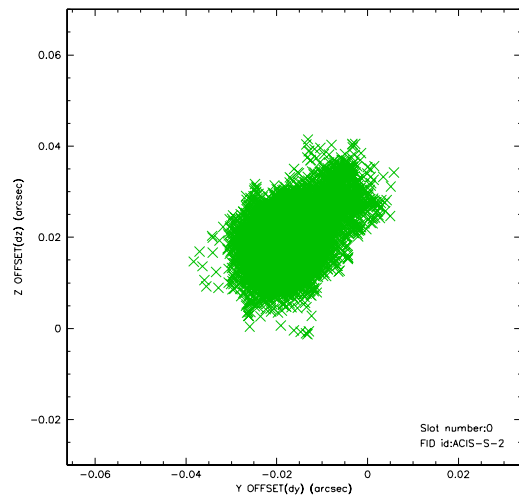


## 2.4.5 Slot 7

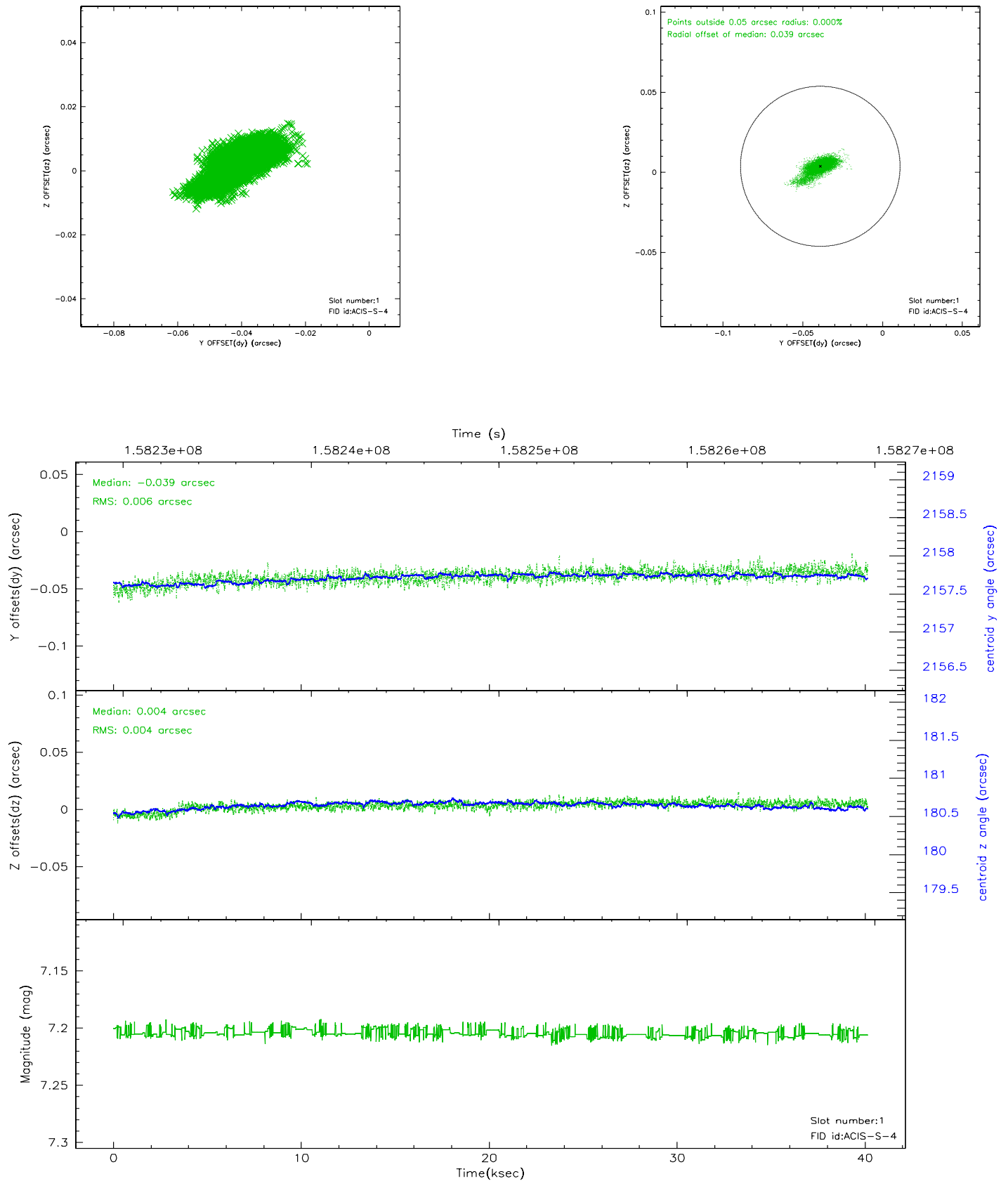


## 2.5 FID Slots

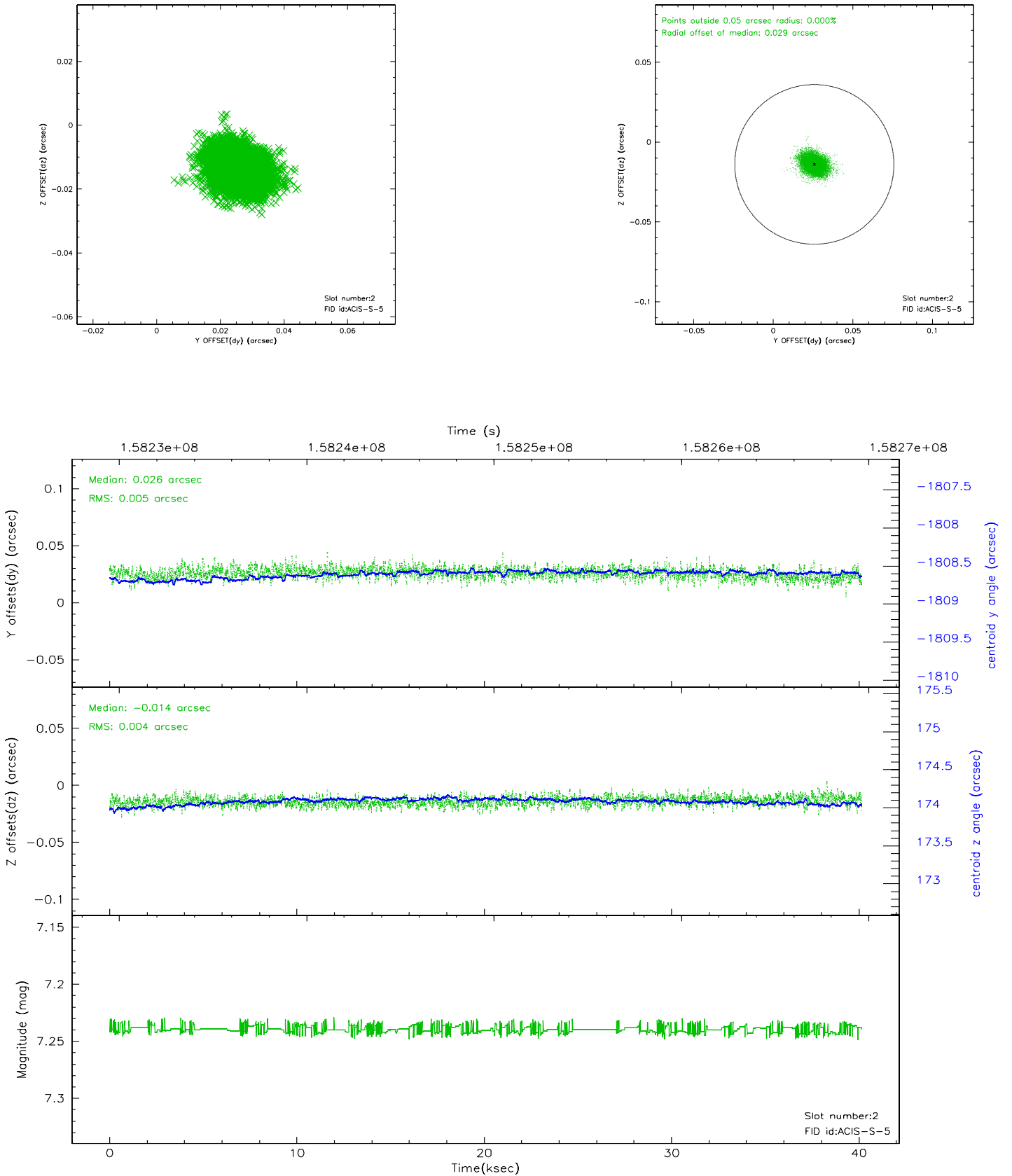
### 2.5.1 Slot 0



## 2.5.2 Slot 1

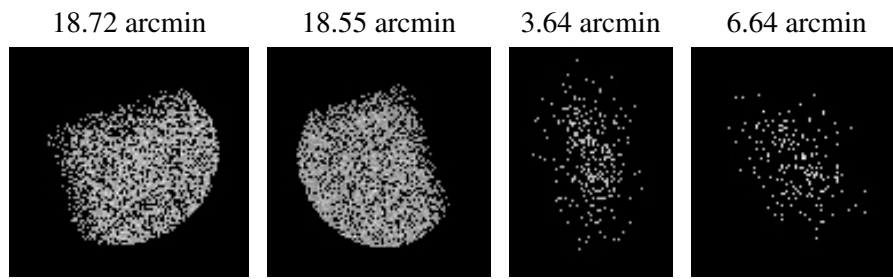


### 2.5.3 Slot 2





### 3 Point Sources



## A Summary

### A.1 Status

V&V Scientist	Beth Sundheim
V&V Date (YYYY-MM-DD)	2006.10.19
V&V Edition	1
V&V Disposition and Status	OK
V&V Charge Time	40.15

### A.2 Comments