

# V&V Reference Report

## L2 ASCDS Version : 7.6.9

Observation 2854 - L2 Version 001  
Chandra X-Ray Center

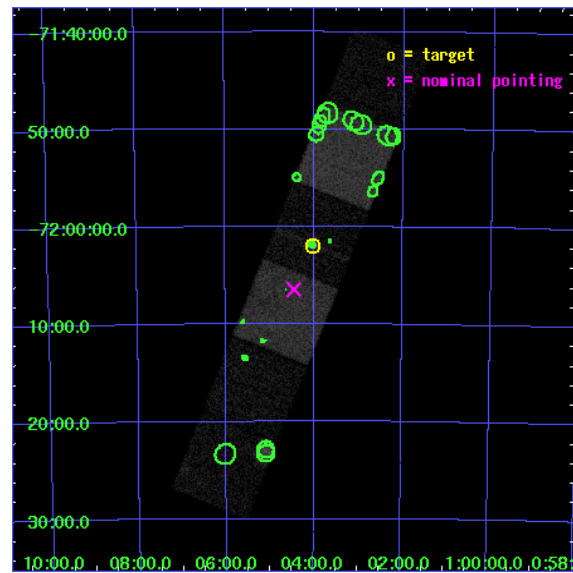
L2 Processing Date : Sep 20 2006

## Contents

<b>1</b>	<b>Front</b>	<b>2</b>
<b>2</b>	<b>OBI</b>	<b>3</b>
2.1	OBI . . . . .	3
2.1.1	Images . . . . .	3
2.1.2	Bias . . . . .	3
2.1.3	Parameters . . . . .	4
2.1.4	Events . . . . .	4
2.2	Compared Parameters . . . . .	5
2.3	Aspect . . . . .	6
2.4	Star Slots . . . . .	9
2.4.1	Slot 3 . . . . .	9
2.4.2	Slot 4 . . . . .	10
2.4.3	Slot 5 . . . . .	11
2.4.4	Slot 6 . . . . .	12
2.4.5	Slot 7 . . . . .	13
2.5	FID Slots . . . . .	14
2.5.1	Slot 0 . . . . .	14
2.5.2	Slot 1 . . . . .	15
2.5.3	Slot 2 . . . . .	16
<b>3</b>	<b>Point Sources</b>	<b>17</b>
<b>A</b>	<b>Summary</b>	<b>18</b>
A.1	Status . . . . .	18
A.2	Comments . . . . .	18

# 1 Front

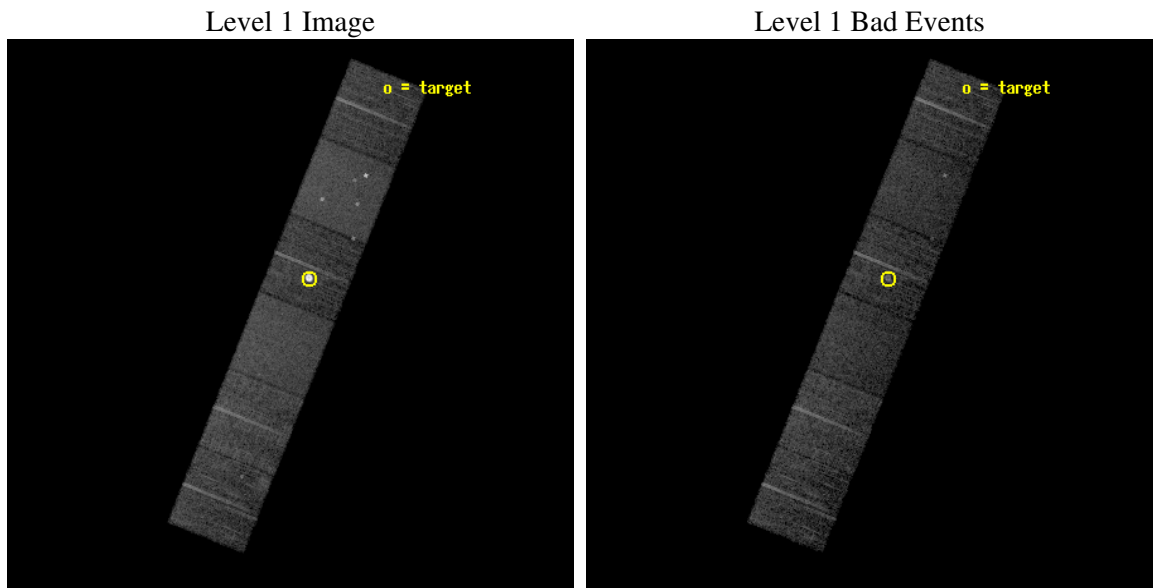
seq_num	590243
obs_id	2854
title	AO3B ACIS-S CALIBRATION OBSERVATIONS OF E0102-72
observer	Dr. CXC Calibration
object	E0102-72.3 [Chip S2, T=120, Offsets=5,0,0]
dtcycle	0
cycle	P
ra_targ	16.01
dec_targ	-72.032028
ra_nom	16.113147626856
dec_nom	-72.107430983142
roll_nom	111.85386235743
revision	2
ontime	7654.3999714851
livetime	7557.4753501199
ontime4	7654.3999714851
ontime5	7654.3999714851
ontime6	7654.3999714851
ontime7	7654.3999714851
ontime8	7651.159011215
ontime9	7654.3999714851
l2events	107626



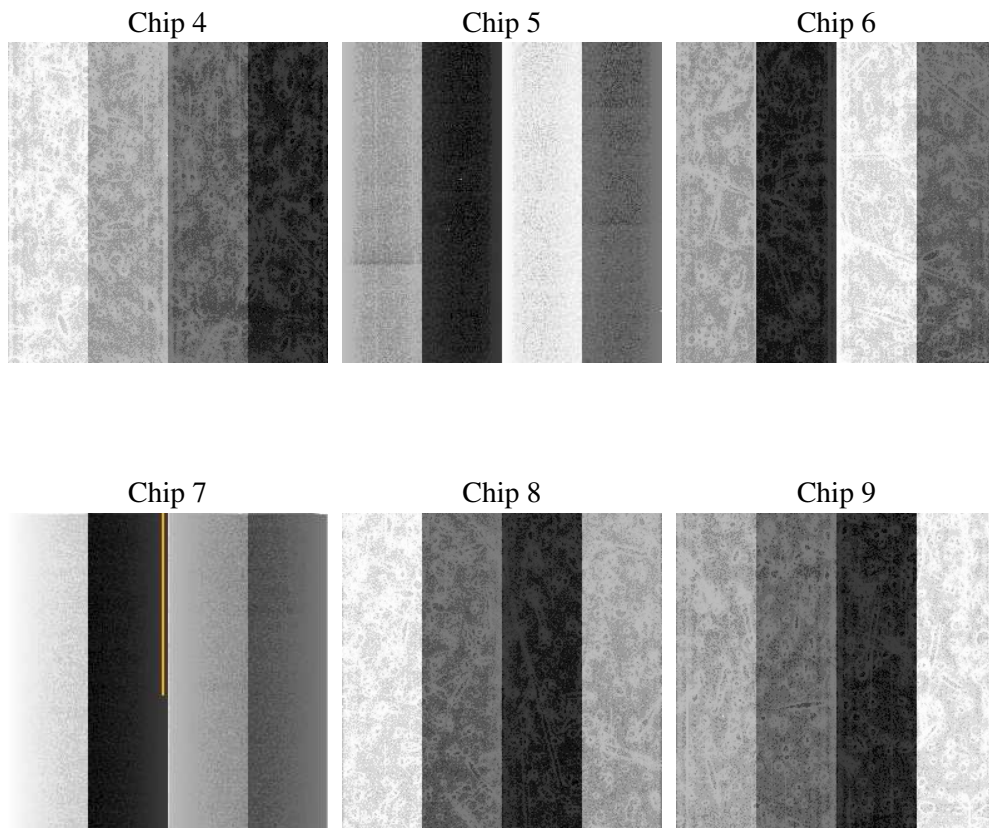
## 2 OBI

### 2.1 OBI

#### 2.1.1 Images



#### 2.1.2 Bias



### 2.1.3 Parameters

obi_num	0
ascdsver	7.6.9
caldsver	3.2.3
date	2006-09-21T00:03:58
revision	2

sched_exp_time	7900.000000
ontime	7658.4844236076
ontime4	7658.4844036698
ontime5	7658.4844535291
ontime6	7658.4844236076
ontime7	7658.4844335914
ontime8	7655.2433736622
ontime9	7658.4844335914
l1events	396700

### 2.1.4 Events

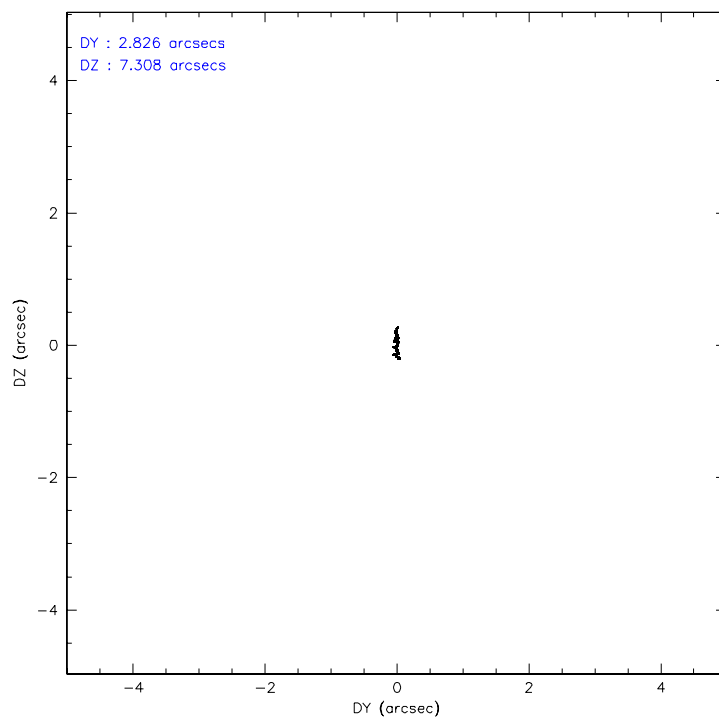
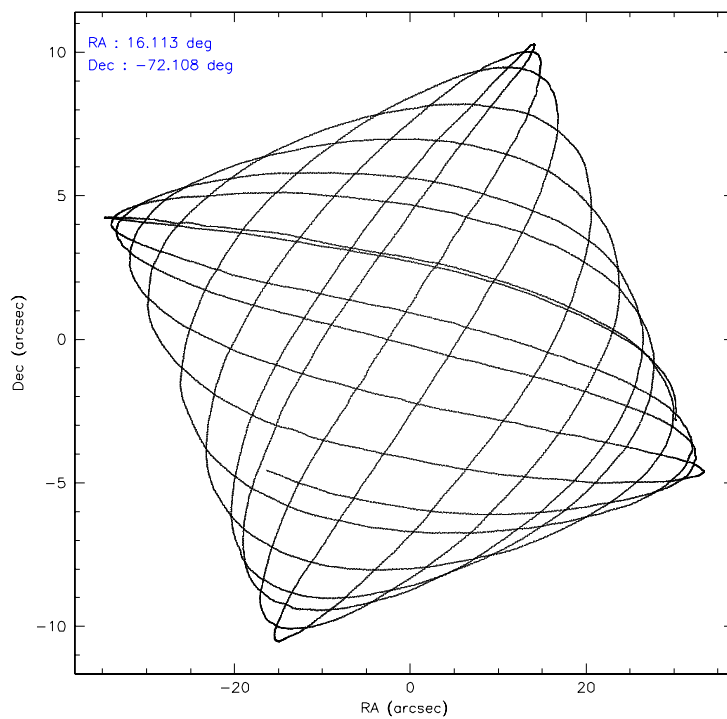
	ccd 4	ccd 5	ccd 6	ccd 7	ccd 8	ccd 9
level 1 events	53231	75816	80211	67378	67891	52173
rejected events	47246	40885	43843	40892	54816	44304
rejected %	88%	53%	54%	60%	80%	84%

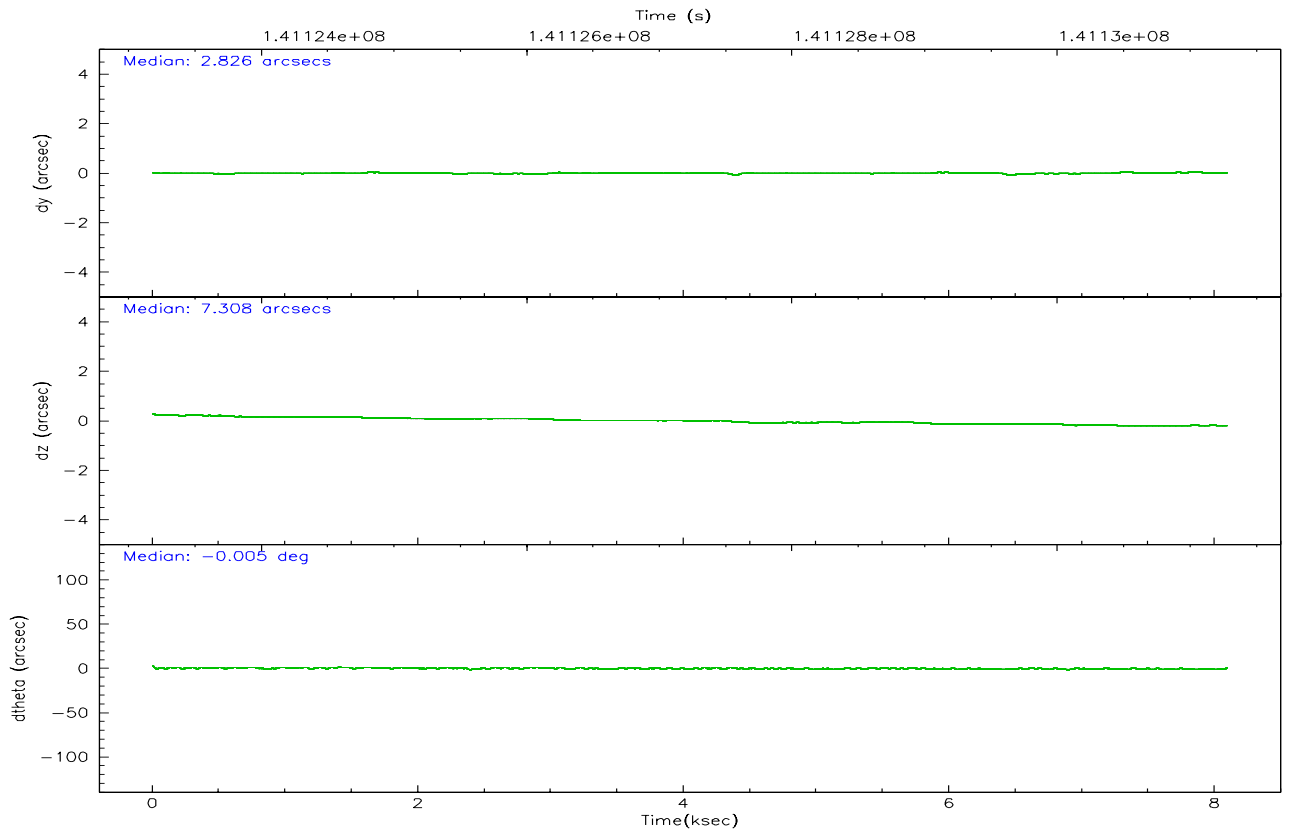
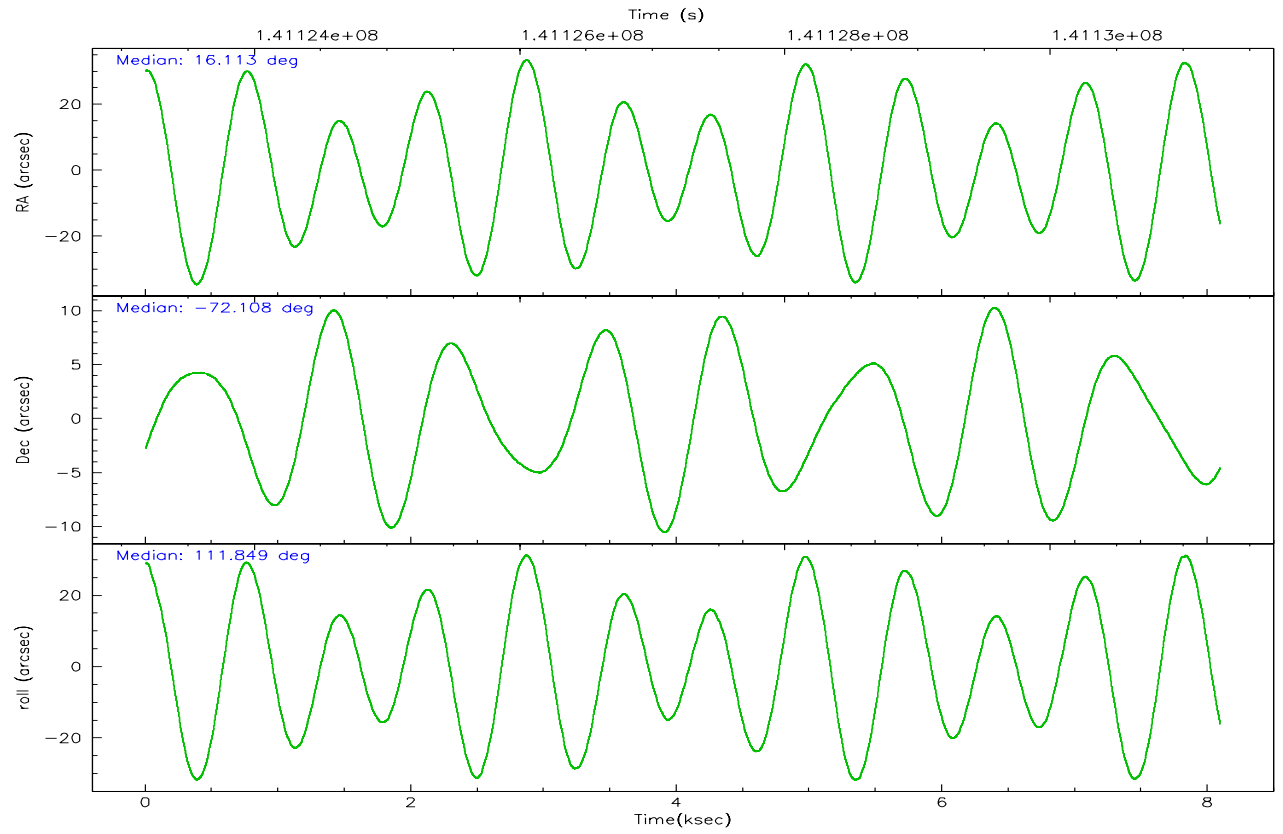
	ccd 4	ccd 5	ccd 6	ccd 7	ccd 8	ccd 9
grade 0 events	2416	4311	29649	1990	4079	4021
	4%	5%	36%	2%	6%	7%
grade 1 events	33	403	316	49	32	33
	0%	0%	0%	0%	0%	0%
grade 2 events	1435	10897	3255	6659	2899	1424
	2%	14%	4%	9%	4%	2%
grade 3 events	538	880	1107	1446	1272	634
	1%	1%	1%	2%	1%	1%
grade 4 events	559	766	1070	1499	1218	575
	1%	1%	1%	2%	1%	1%
grade 5 events	1902	3619	2288	4583	2838	2215
	3%	4%	2%	6%	4%	4%
grade 6 events	1045	18087	1304	14903	3611	1220
	1%	23%	1%	22%	5%	2%
grade 7 events	45303	36853	41222	36249	51942	42051
	85%	48%	51%	53%	76%	80%

## 2.2 Compared Parameters

Parameter	Planned	Actual	Parameter	Planned	Actual
Instrument	ACIS	ACIS	Obspar format version number	6	6
Detector	ACIS-456789	ACIS-456789	Obspar file type	PREDICTED	ACTUAL
Grating	NONE	NONE	Obspar update status	NONE	UPDATED
Data mode	FAINT	FAINT	Number of optional ACIS chips dropped	0	0
Observation mode	POINTING	POINTING	On-chip summing requested	N	N
Pointing RA	16.183556	16.11314762685632	Subarray requested	NONE	NONE
Pointing Dec	-72.123967	-72.10743098314192	Alternating exposures requested	N	N
Pointing Roll	111.764238	111.8538623574278	Primary exposure time	0.000000	3.2
Window start time	139276864.184000	139276864.184000			
Window stop time	141782464.184000	141782464.184000			
SIM focus pos (mm)	-0.684267	-0.6828225247311905			
SIM defocus (mm)	0	0.001444936568705701			
SIM translation stage pos (mm)	-190.132523	-190.1425803651734			
SIM translation stage offset (mm)	0	0.01005778216563158			
Observation start time	141123383.184000	141123007.0534			
Observation start date	2002-06-22T08:55:19	2002-06-22T08:50:07			
Observation end time	141131283.184000	141131417.17874			
Observation end date	2002-06-22T11:06:59	2002-06-22T11:10:17			
Read mode	TIMED	TIMED			

## 2.3 Aspect





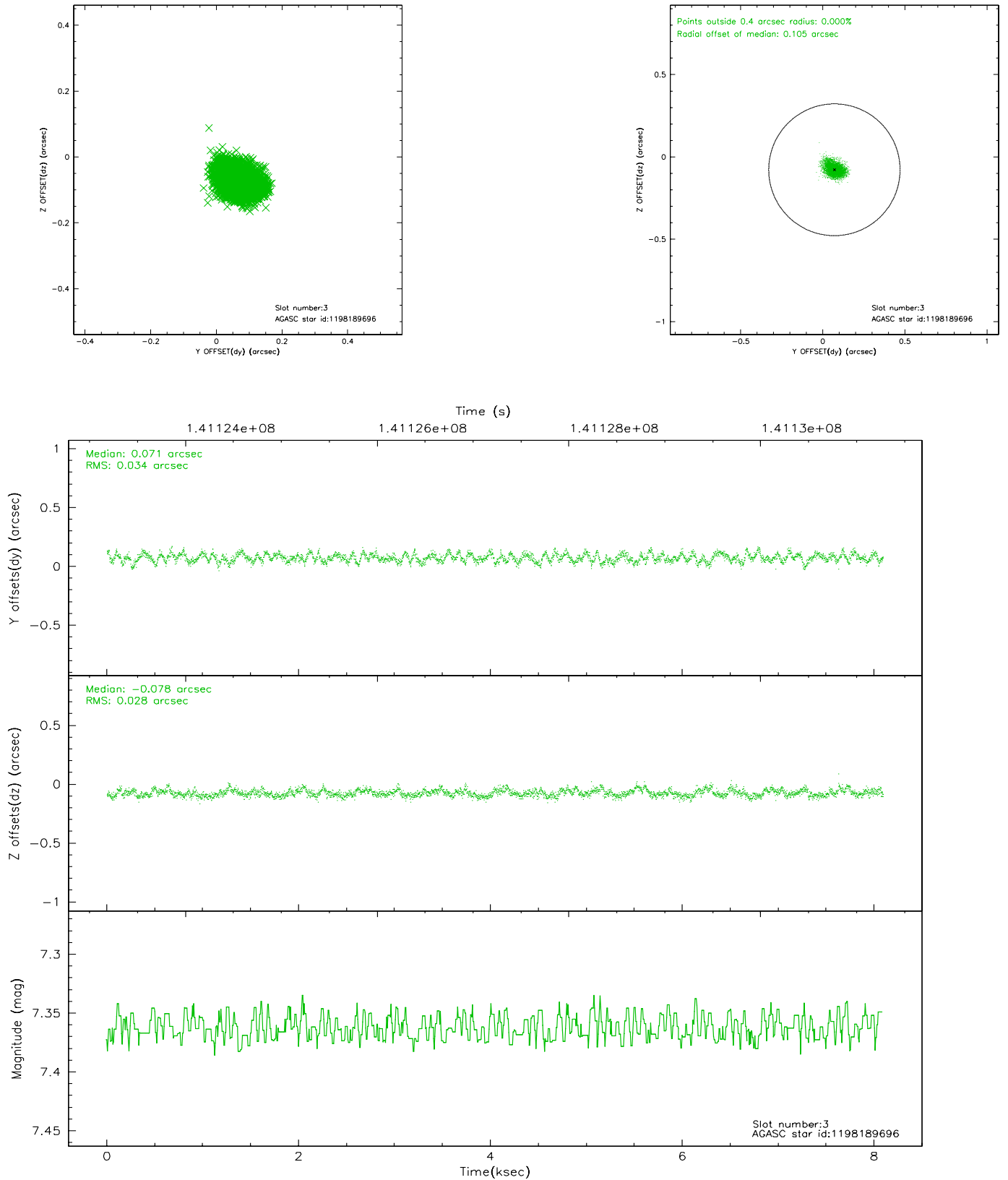
### Slot Statistics

slot	status	id	mag	n_pts	med_dy	med_dz	dr1	dr2	ra	dec	mean_y	mean_z
0	FID	ACIS-S-1	7.19	1974	0.014	-0.018	0.008	0.012	0.000000	0.000000	940.56	-1724.08
1	FID	ACIS-S-5	7.24	1974	0.022	0.031	0.007	0.011	0.000000	0.000000	-1808.01	172.85
2	FID	ACIS-S-6	7.35	1974	-0.057	-0.000	0.010	0.018	0.000000	0.000000	405.34	817.53
3	GUIDE	1198189696	7.36	3948	0.071	-0.078	0.047	0.076	15.223750	-72.697522	-1543.85	1722.81
4	GUIDE	1197750936	7.58	3947	-0.241	-0.004	0.059	0.094	15.387940	-71.549550	2250.81	77.96
5	GUIDE	1197884536	8.49	3948	0.007	0.129	0.062	0.097	17.160729	-71.835289	551.50	-1400.32
6	GUIDE	1197884712	8.31	3948	0.026	-0.047	0.055	0.087	16.087398	-72.252690	-390.69	269.40
7	GUIDE	1197749664	9.56	3946	0.136	0.002	0.089	0.149	15.809015	-72.366369	-659.69	703.34

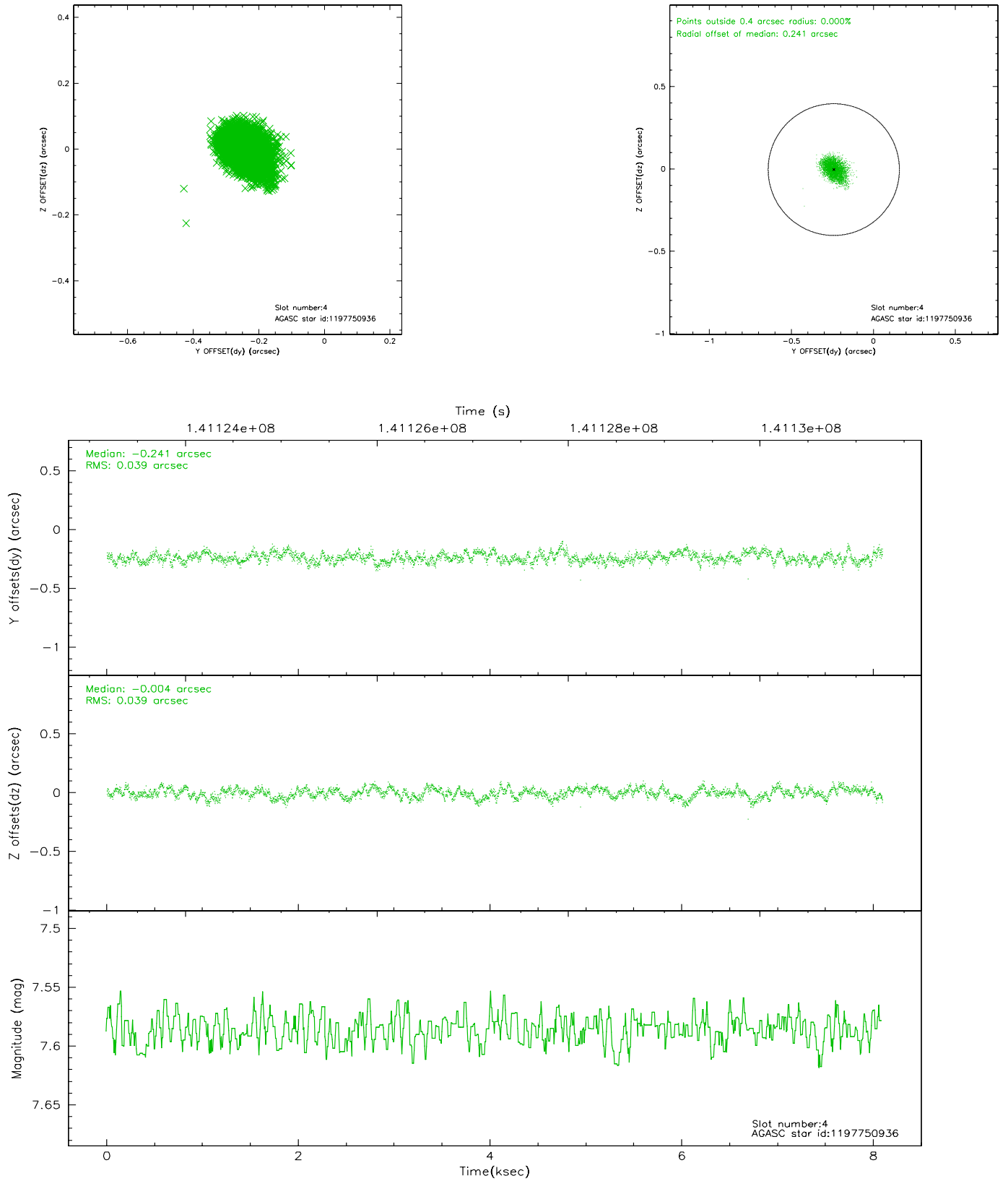


## 2.4 Star Slots

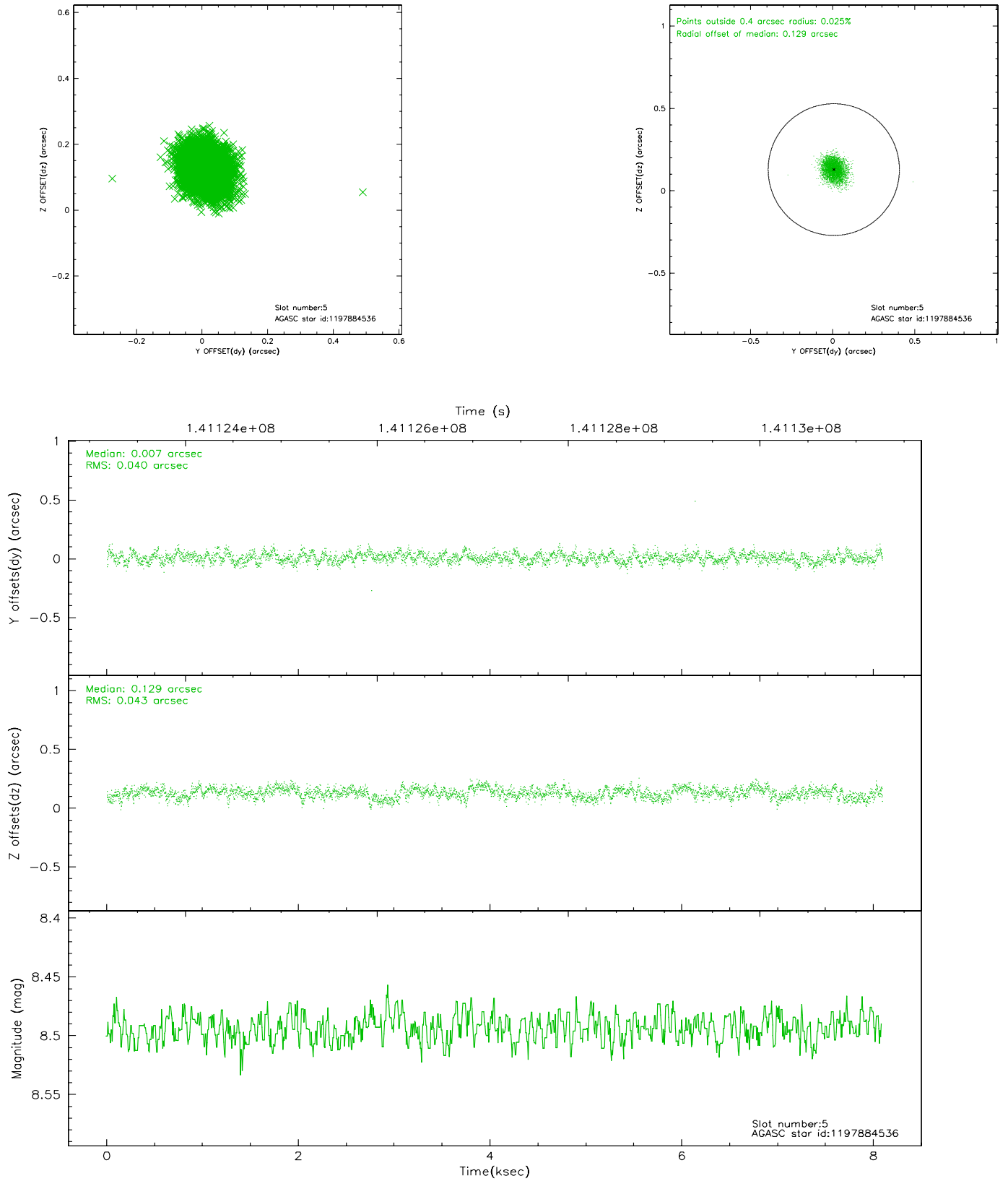
### 2.4.1 Slot 3



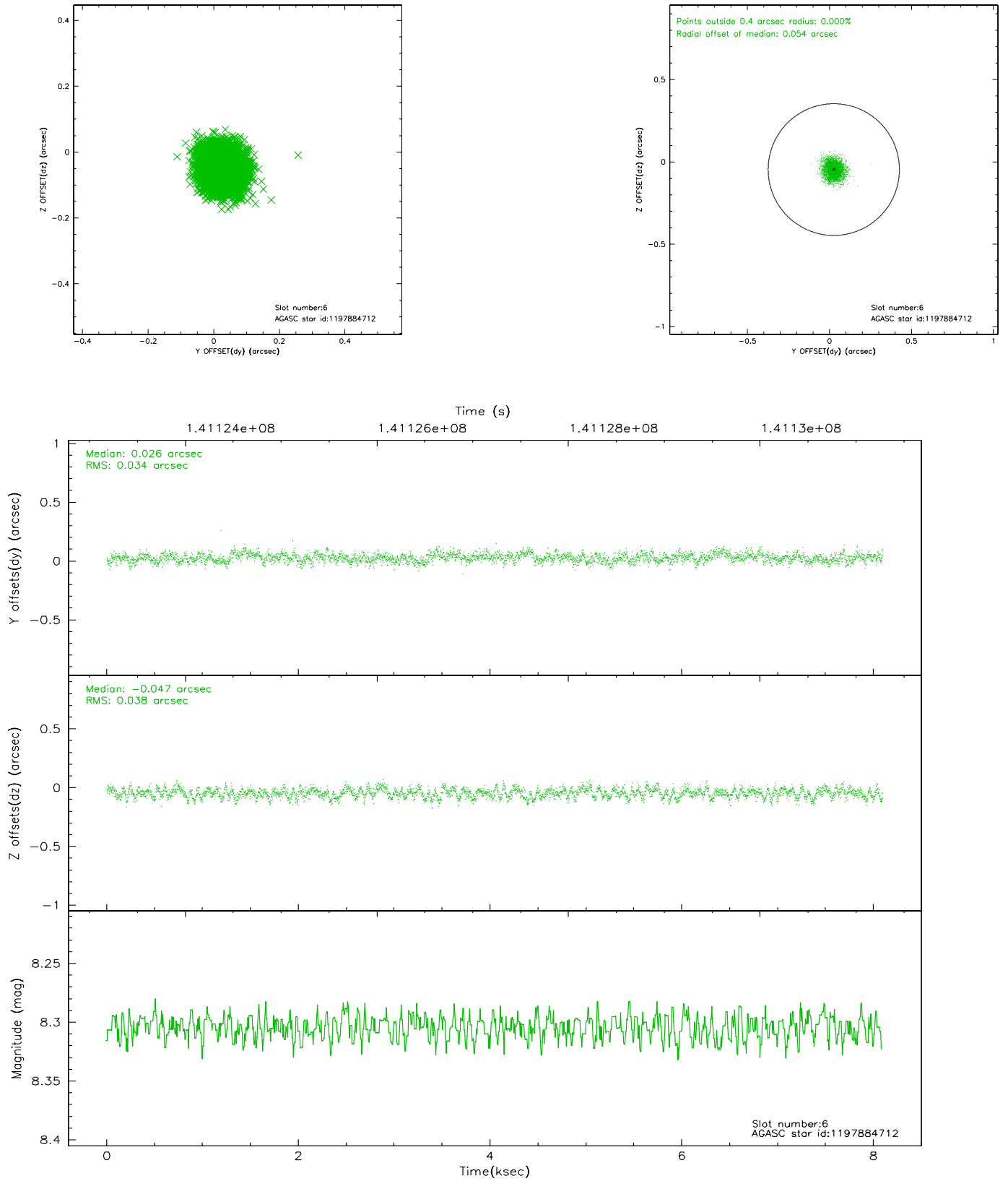
## 2.4.2 Slot 4



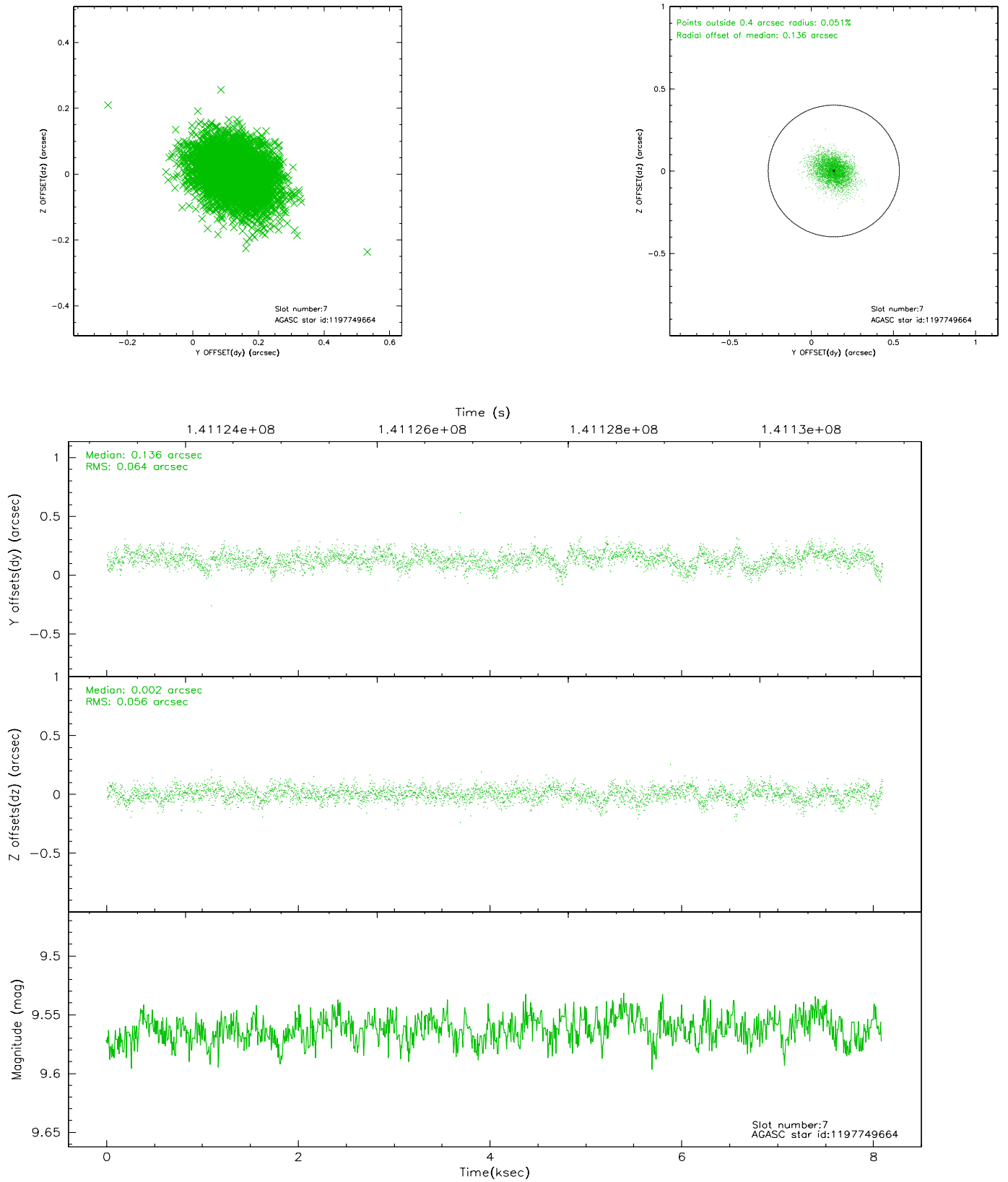
### 2.4.3 Slot 5



## 2.4.4 Slot 6

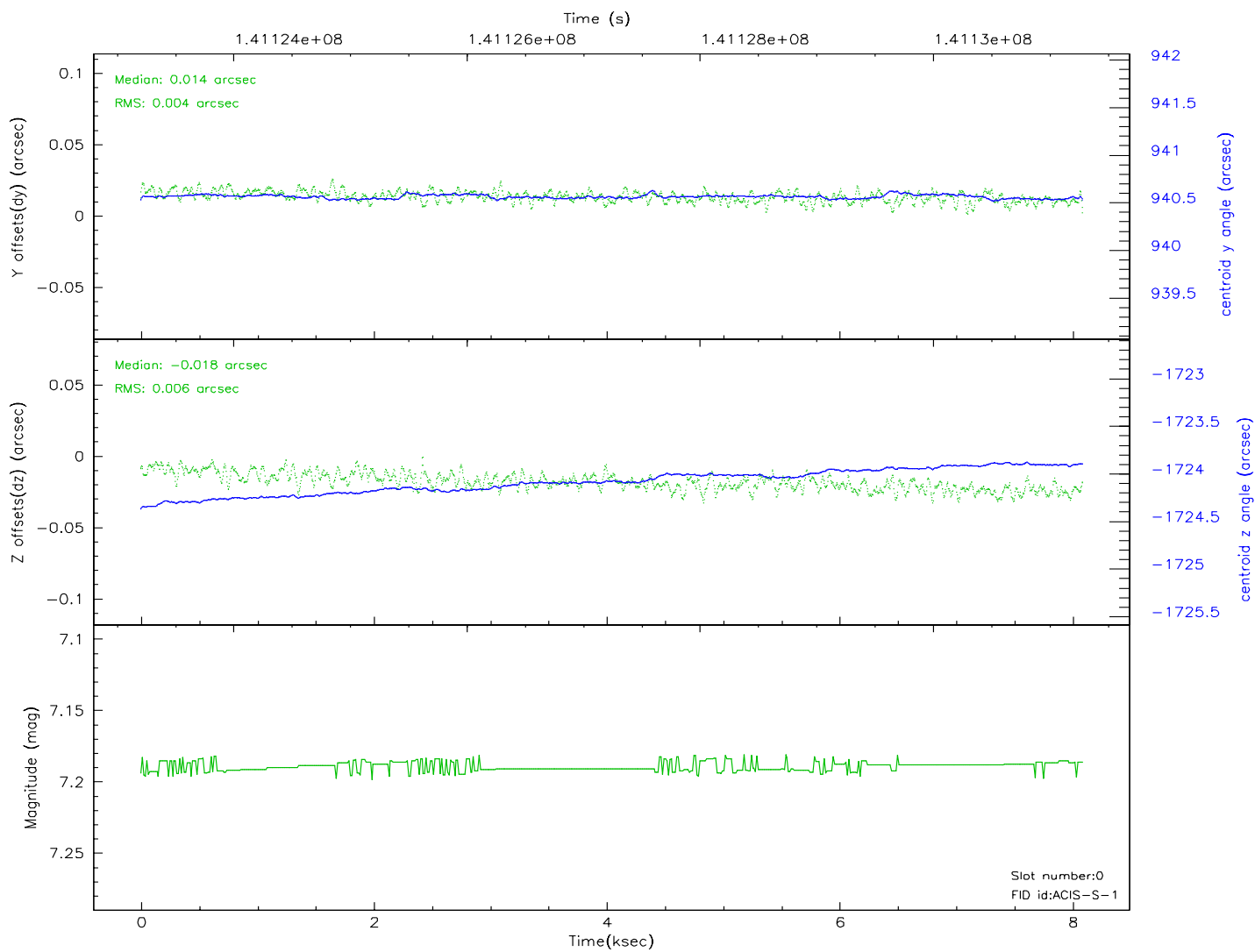
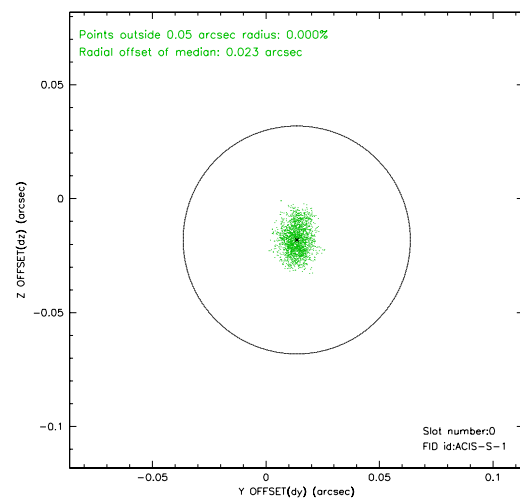
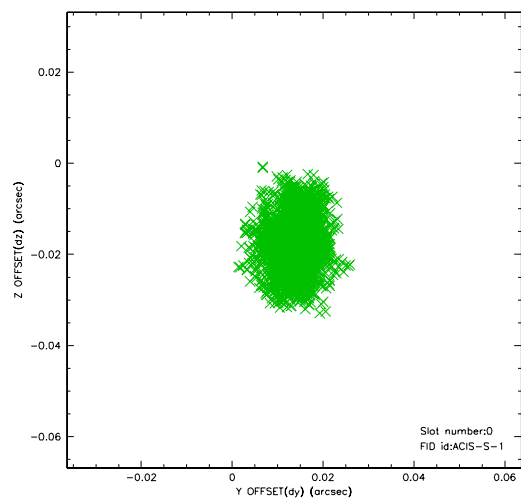


## 2.4.5 Slot 7

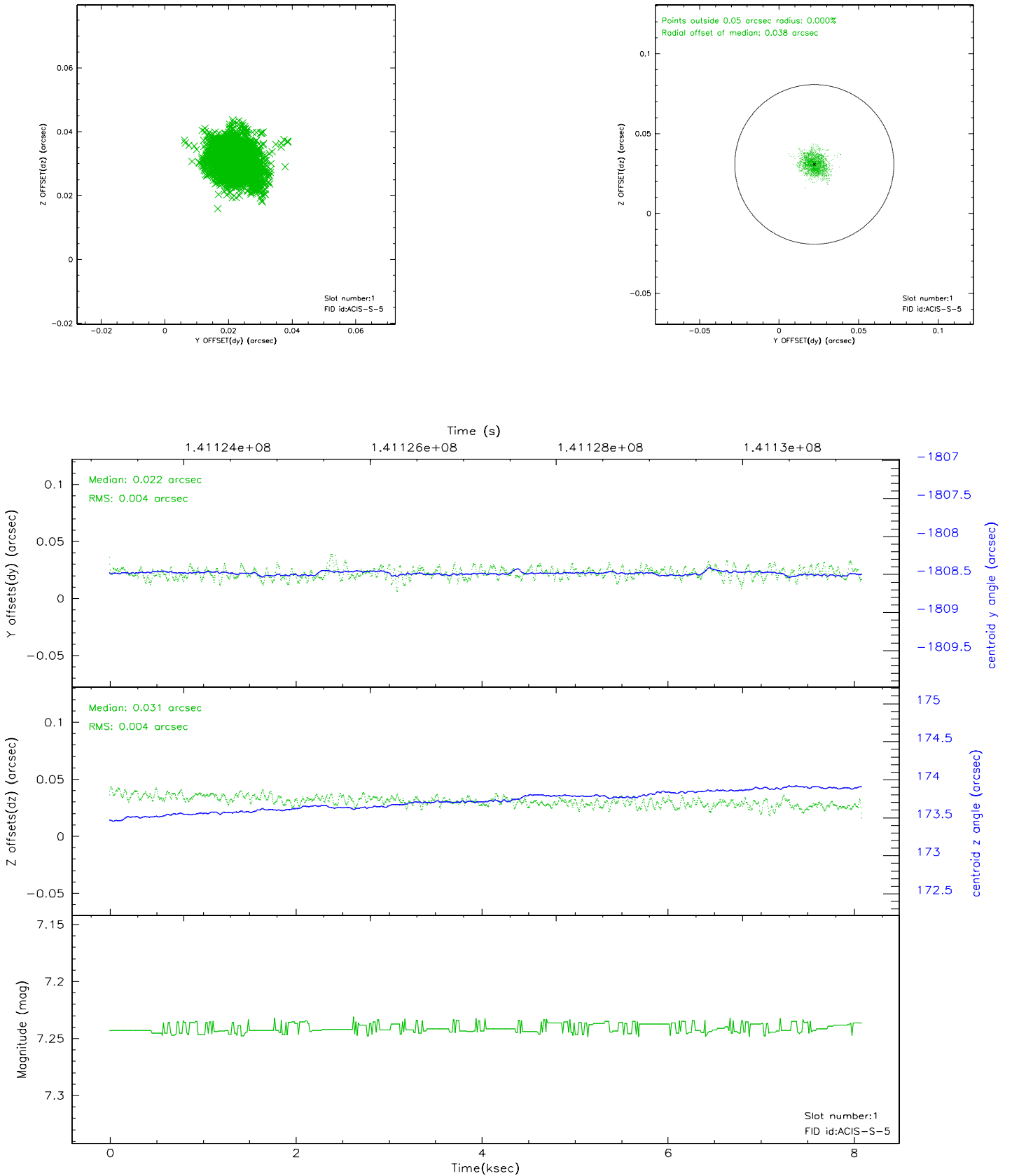


## 2.5 FID Slots

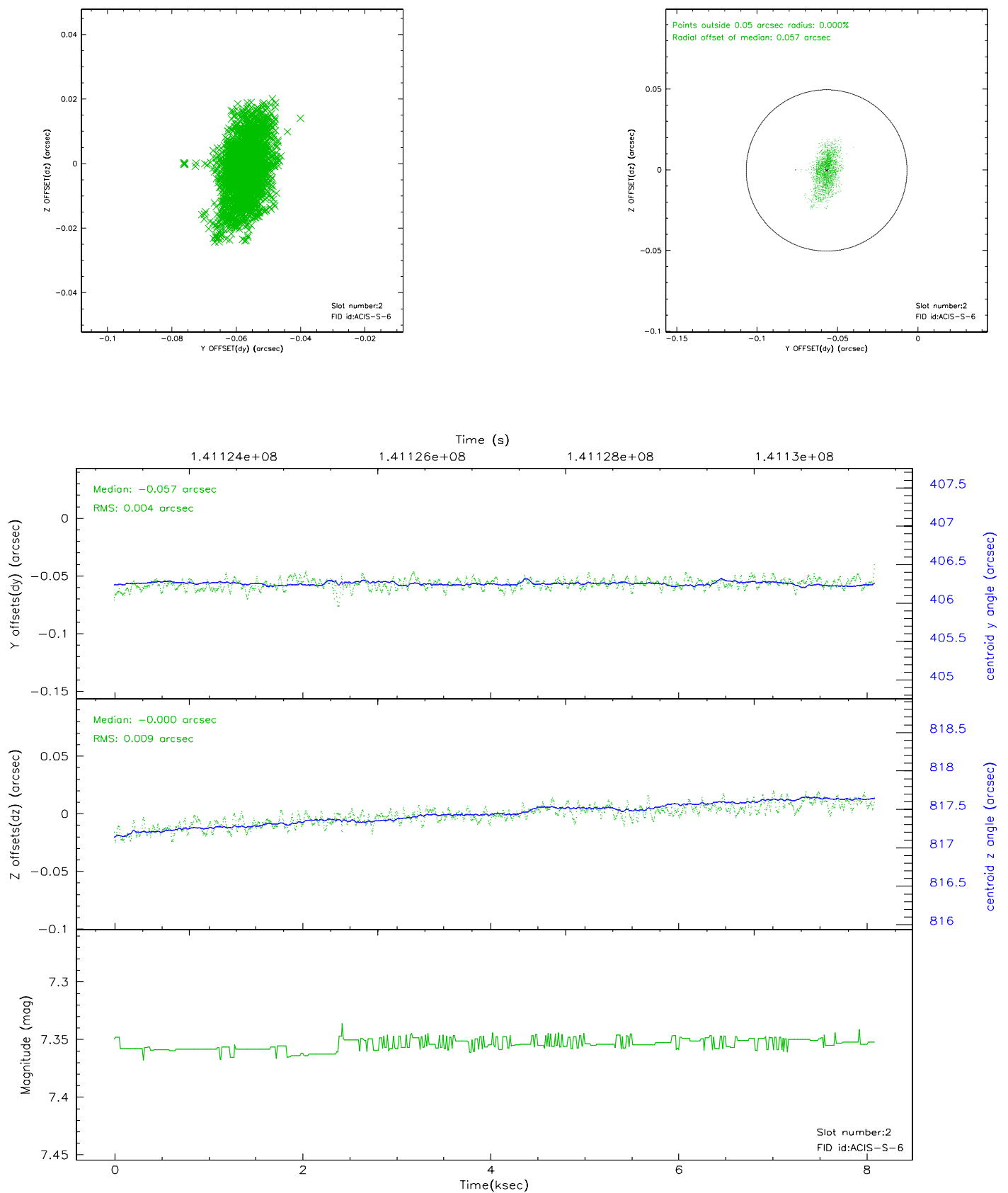
### 2.5.1 Slot 0



## 2.5.2 Slot 1

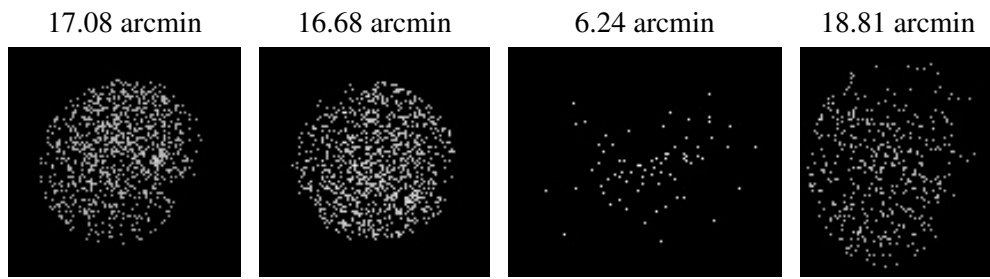


### 2.5.3 Slot 2





### 3 Point Sources



## A Summary

### A.1 Status

V&V Scientist	Beth Sundheim
V&V Date (YYYY-MM-DD)	2006.09.21
V&V Edition	1
V&V Disposition and Status	OK
V&V Charge Time	7.657

### A.2 Comments

Window constraint satisfied.