

V&V Reference Report

L2 ASCDS Version : 7.6.10

Observation 2594 - L2 Version 001
Chandra X-Ray Center

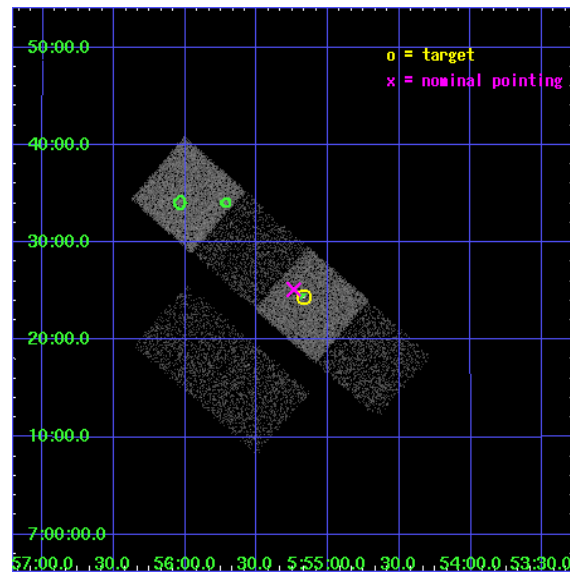
L2 Processing Date : Jan 21 2007

Contents

1	Front	2
2	OBI	3
2.1	OBI	3
2.1.1	Images	3
2.1.2	Bias	3
2.1.3	Parameters	4
2.1.4	Events	4
2.2	Compared Parameters	5
2.3	Aspect	6
2.4	Star Slots	9
2.4.1	Slot 3	9
2.4.2	Slot 4	10
2.4.3	Slot 5	11
2.4.4	Slot 6	12
2.4.5	Slot 7	13
2.5	FID Slots	14
2.5.1	Slot 0	14
2.5.2	Slot 1	15
2.5.3	Slot 2	16
3	Point Sources	17
A	Summary	18
A.1	Status	18
A.2	Comments	18

1 Front

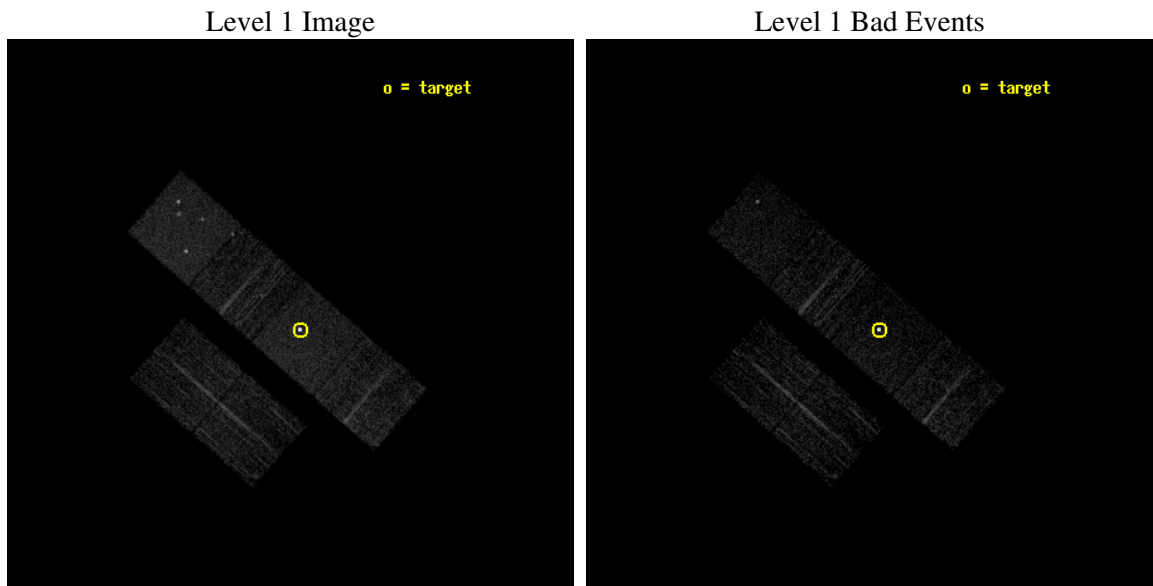
seq_num	290150
obs_id	2594
title	AO3 CALIBRATION OBSERVATIONS OF BETELGEUSE
observer	Dr. CXC Calibration
object	BETELGEUSE
dtcycle	0
cycle	P
ra_targ	88.792917
dec_targ	7.407056
ra_nom	88.809793105885
dec_nom	7.4193698335524
roll_nom	41.145339260411
revision	2
ontime	2963.2000027597
livetime	2925.6781800999
ontime2	2963.2000027597
ontime3	2963.2000027597
ontime5	2963.2000027597
ontime6	2963.2000027597
ontime7	2963.2000027597
ontime8	2963.2000027597
l2events	29043



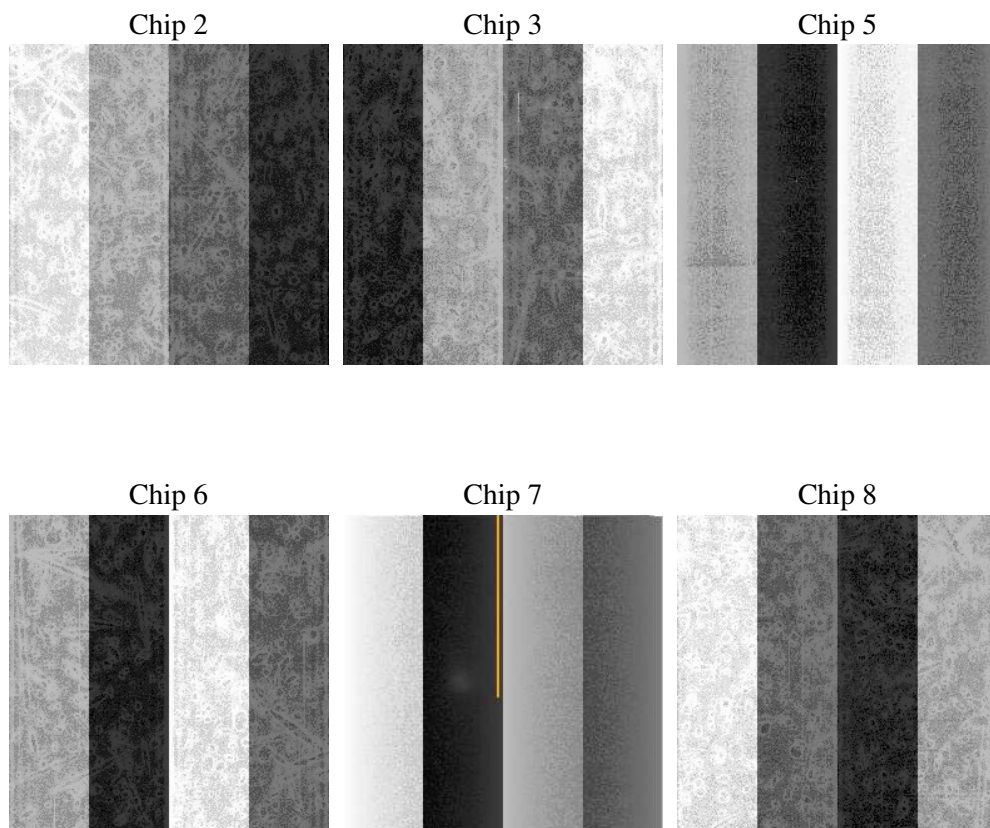
2 OBI

2.1 OBI

2.1.1 Images



2.1.2 Bias



2.1.3 Parameters

obi_num	1
ascdsver	7.6.10
caldsver	3.3.0
date	2007-01-20T14:20:21
revision	2

sched_exp_time	3000.000000
ontime	2963.2000027597
ontime2	2963.2000027597
ontime3	2963.2000027597
ontime5	2963.2000027597
ontime6	2963.2000027597
ontime7	2963.2000027597
ontime8	2963.2000027597
l1events	148579

2.1.4 Events

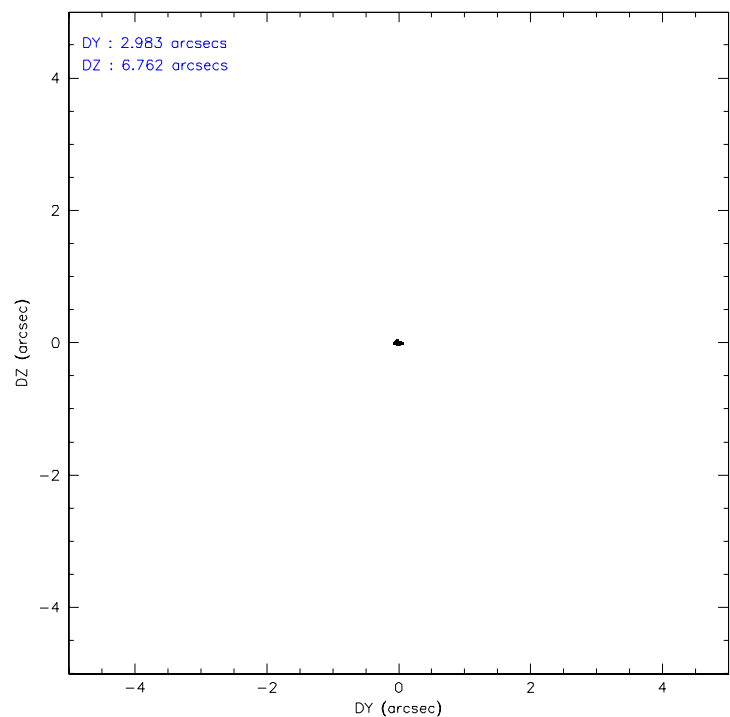
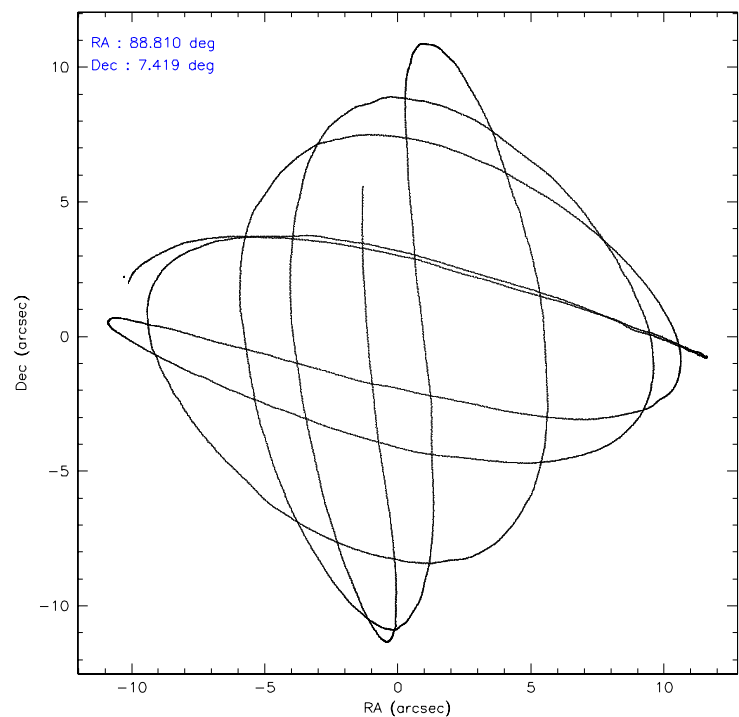
	ccd 2	ccd 3	ccd 5	ccd 6	ccd 7	ccd 8
level 1 events	18628	18788	27942	19780	40809	22632
rejected events	16695	16731	14494	17605	29479	18220
rejected %	89%	89%	51%	89%	72%	80%

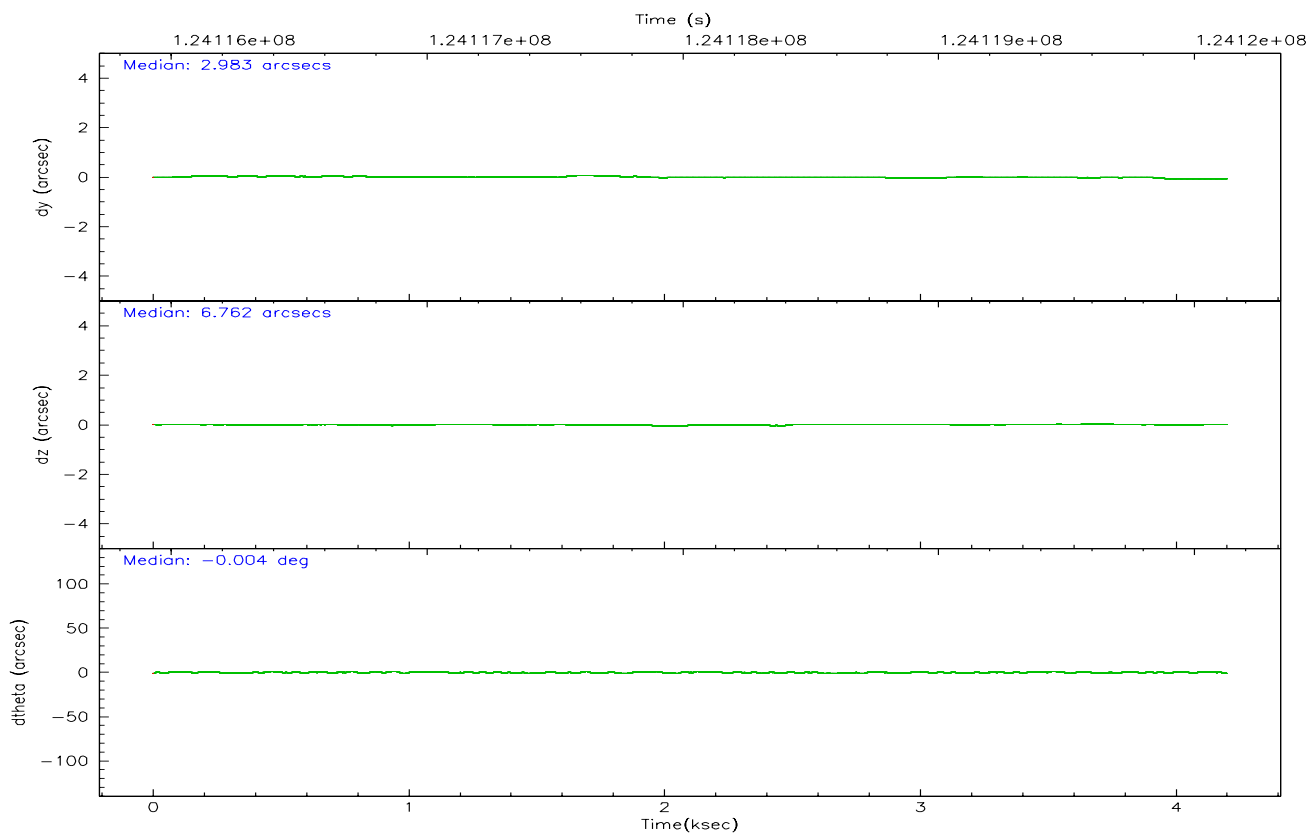
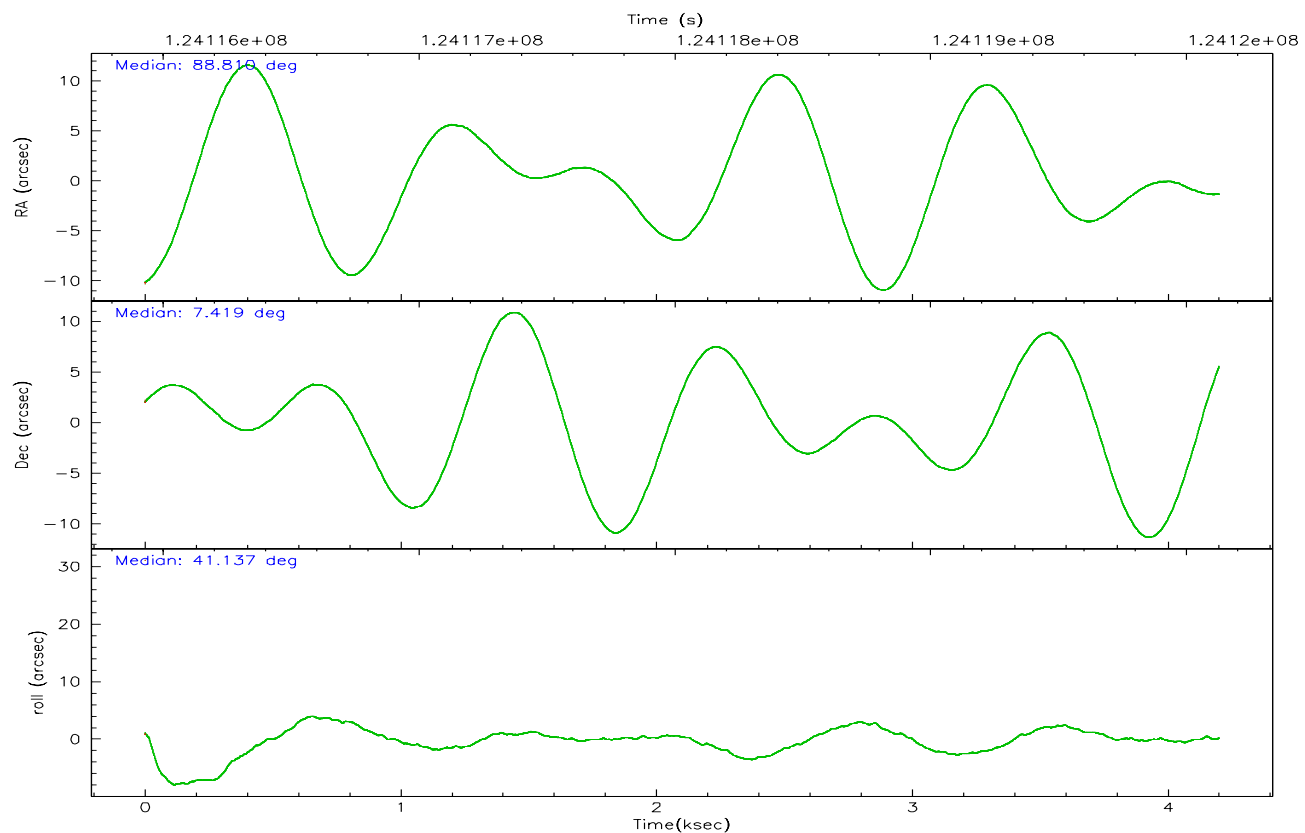
	ccd 2	ccd 3	ccd 5	ccd 6	ccd 7	ccd 8
grade 0 events	784	869	2400	940	1176	1480
	4%	4%	8%	4%	2%	6%
grade 1 events	5	10	42	8	734	12
	0%	0%	0%	0%	1%	0%
grade 2 events	468	416	3754	432	2305	971
	2%	2%	13%	2%	5%	4%
grade 3 events	192	196	547	216	1046	514
	1%	1%	1%	1%	2%	2%
grade 4 events	183	200	531	177	1045	444
	0%	1%	1%	0%	2%	1%
grade 5 events	632	758	1988	826	3401	996
	3%	4%	7%	4%	8%	4%
grade 6 events	325	380	6241	414	5781	1010
	1%	2%	22%	2%	14%	4%
grade 7 events	16039	15959	12439	16767	25321	17205
	86%	84%	44%	84%	62%	76%

2.2 Compared Parameters

Parameter	Planned	Actual	Parameter	Planned	Actual
Instrument	ACIS	ACIS	Obspar format version number	6	6
Detector	ACIS-235678	ACIS-235678	Obspar file type	PREDICTED	ACTUAL
Grating	NONE	NONE	Obspar update status	NONE	UPDATED
Data mode	FAINT	FAINT	Number of optional ACIS chips dropped	0	0
Observation mode	POINTING	POINTING	On-chip summing requested	N	N
Pointing RA	88.801254	88.80979310588481	Subarray requested	NONE	NONE
Pointing Dec	7.393482	7.419369833552447	Alternating exposures requested	N	N
Pointing Roll	40.989797	41.14533926041129	Primary exposure time	0.000000	3.2
Window start time	123552064.184000	123552064.184000			
Window stop time	126144064.184000	126144064.184000			
SIM focus pos (mm)	-0.684267	-0.6828225247311905			
SIM defocus (mm)	0	0.001444936568705701			
SIM translation stage pos (mm)	-190.132523	-190.1400660498719			
SIM translation stage offset (mm)	0	0.00754346686406393			
Observation start time	124117128.184000	124115662.08959			
Observation start date	2001-12-07T12:57:44	2001-12-07T12:34:22			
Observation end time	124120128.184000	124121670.12733			
Observation end date	2001-12-07T13:47:44	2001-12-07T14:14:30			
Read mode	TIMED	TIMED			

2.3 Aspect



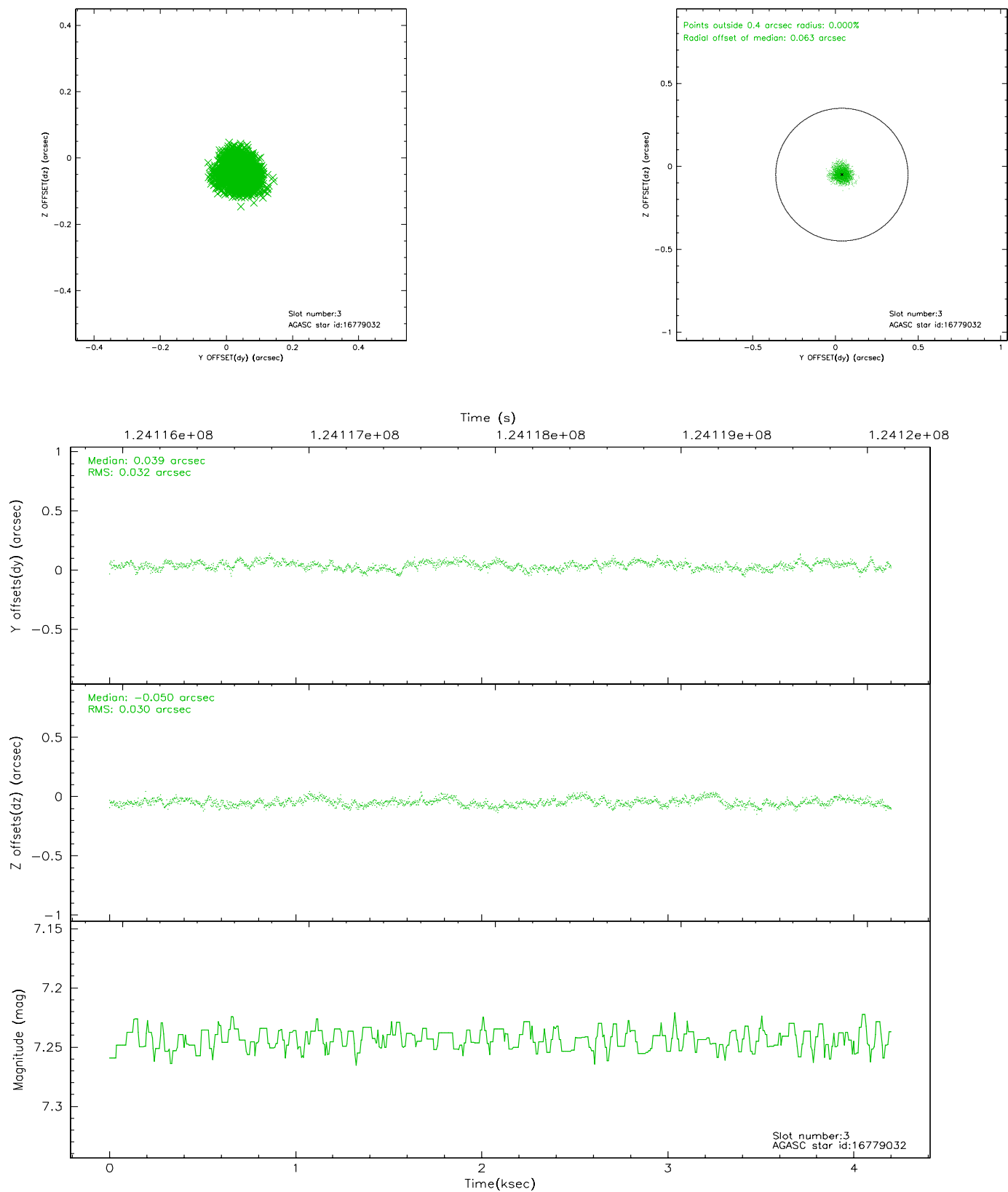


Slot Statistics

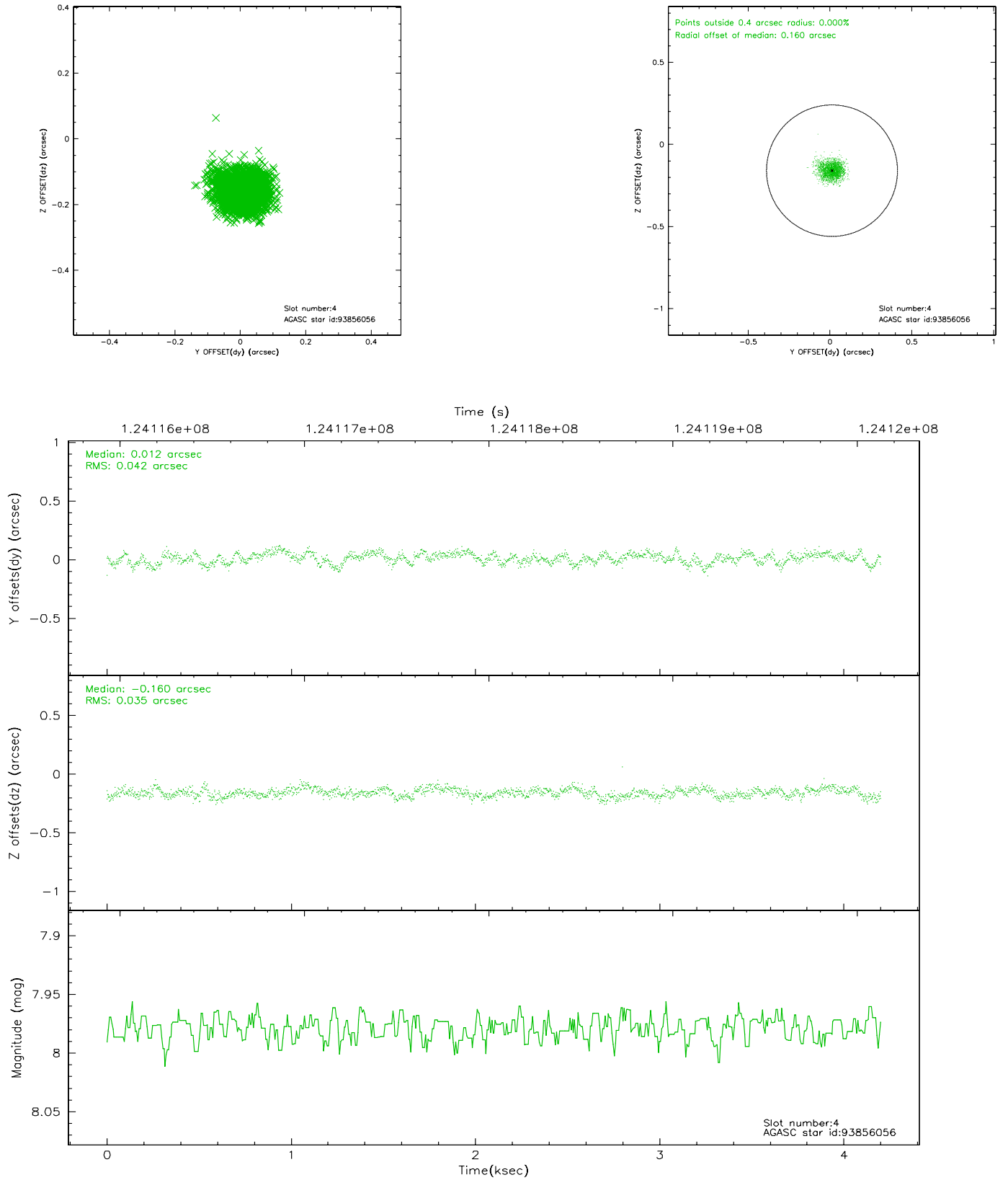
slot	status	id	mag	n_pts	med_dy	med_dz	dr1	dr2	ra	dec	mean_y	mean_z
0	FID	ACIS-S-2	7.11	1025	0.023	0.028	0.005	0.009	0.000000	0.000000	-755.59	-1727.90
1	FID	ACIS-S-4	7.20	1025	-0.043	-0.011	0.006	0.010	0.000000	0.000000	2156.94	179.04
2	FID	ACIS-S-6	7.35	1025	-0.008	-0.009	0.007	0.012	0.000000	0.000000	408.25	818.11
3	GUIDE	16779032	7.24	2042	0.039	-0.050	0.047	0.074	88.070651	7.329382	-2118.66	1539.00
4	GUIDE	93856056	7.98	2049	0.012	-0.160	0.058	0.094	88.147460	7.547925	-1396.12	1952.71
5	GUIDE	16913360	8.34	2048	-0.055	0.065	0.053	0.085	89.178373	7.247125	671.44	-1278.69
6	GUIDE	16918912	8.64	2048	-0.073	0.157	0.124	0.187	89.257075	6.922287	118.73	-2347.90
7	GUIDE	93855168	9.05	2049	0.077	-0.008	0.080	0.133	89.021483	7.846508	1663.38	716.00

2.4 Star Slots

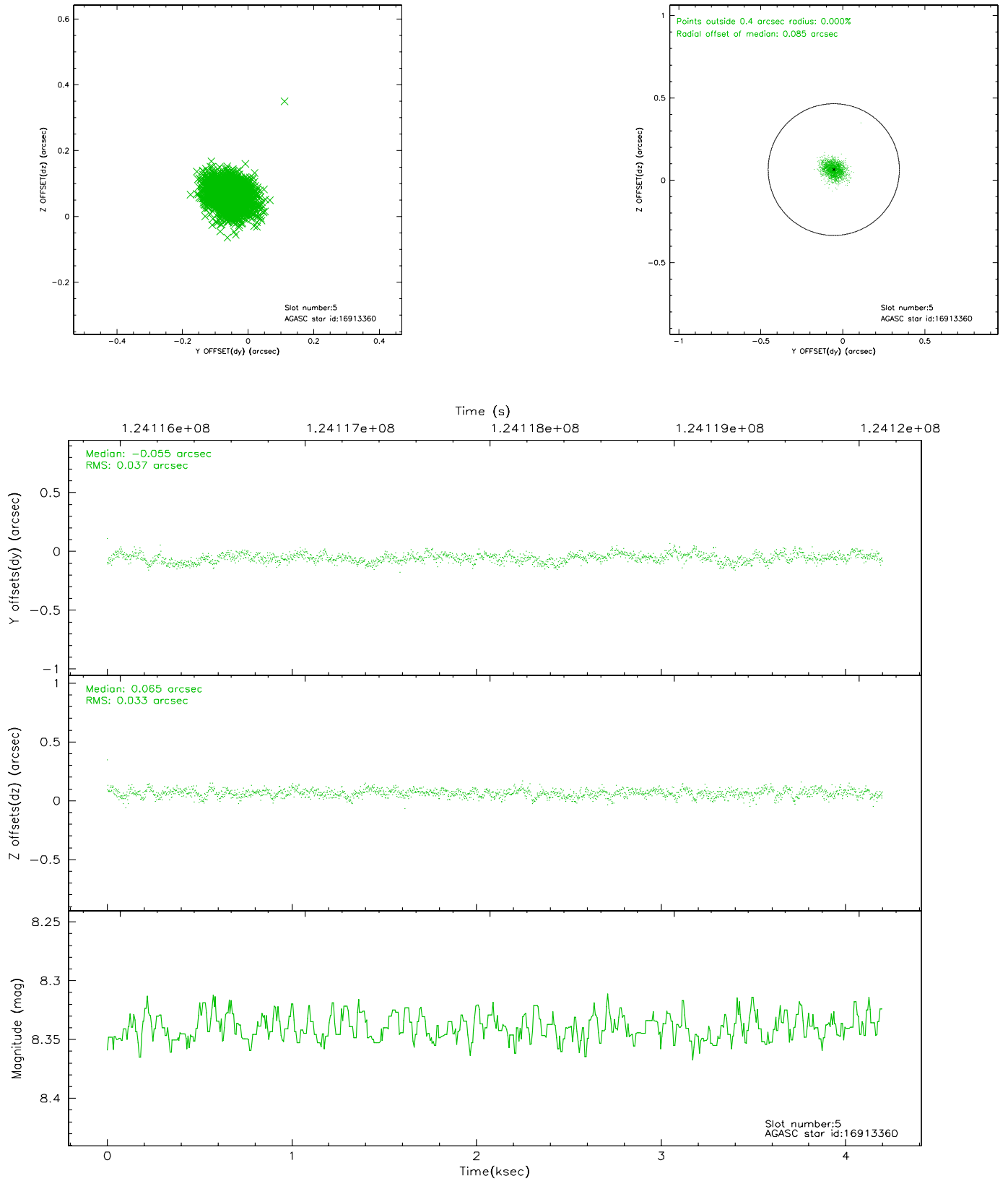
2.4.1 Slot 3



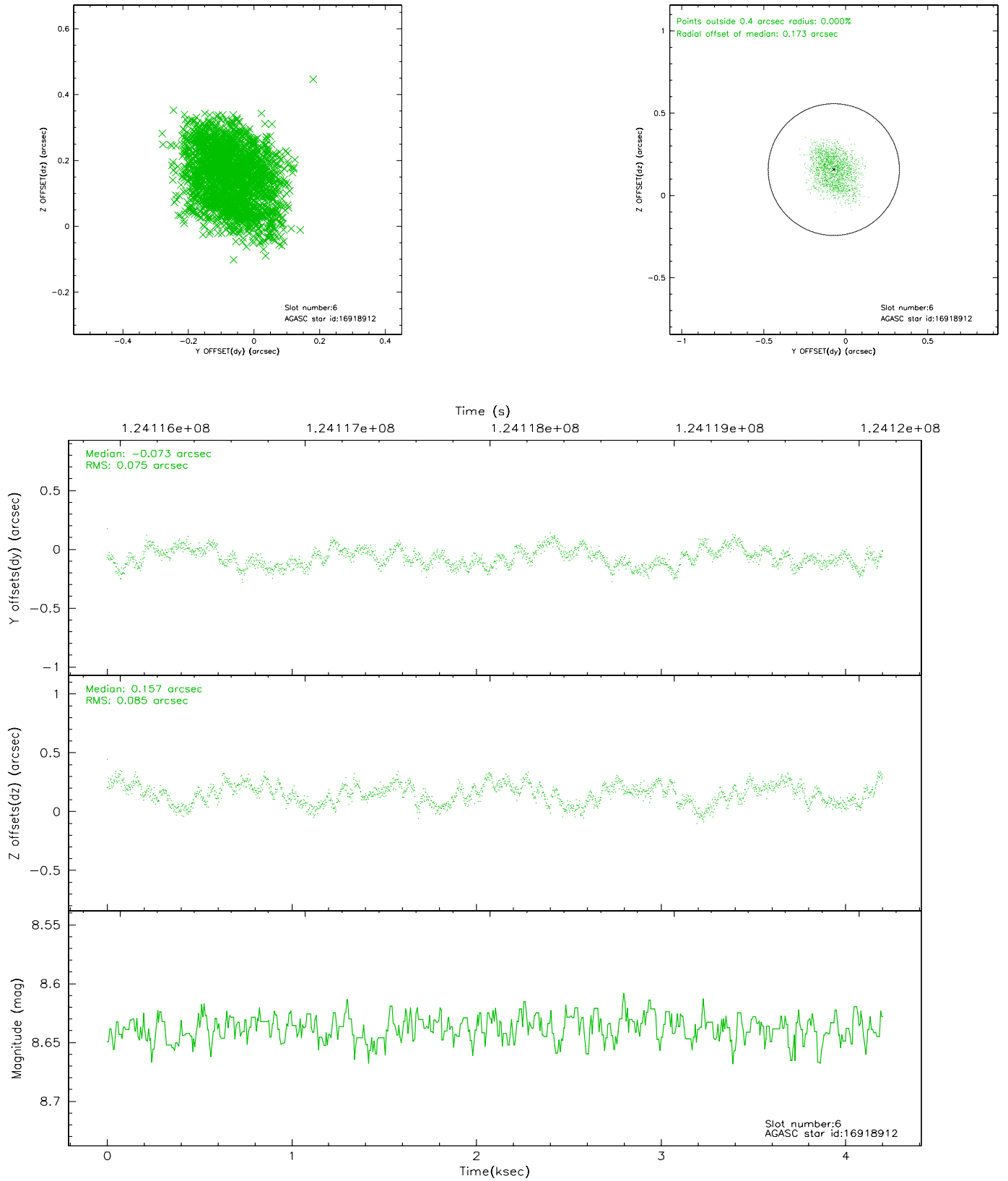
2.4.2 Slot 4



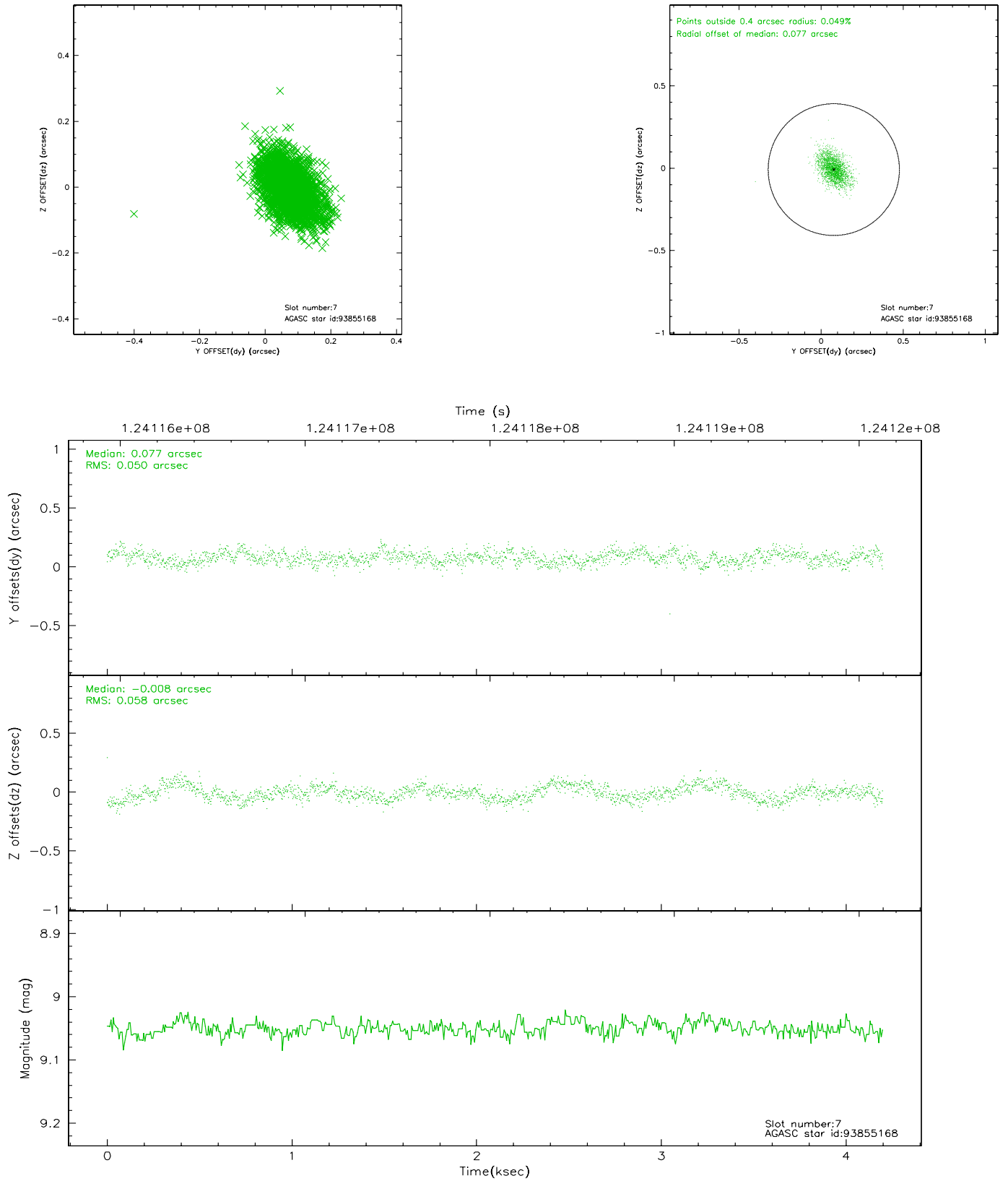
2.4.3 Slot 5



2.4.4 Slot 6

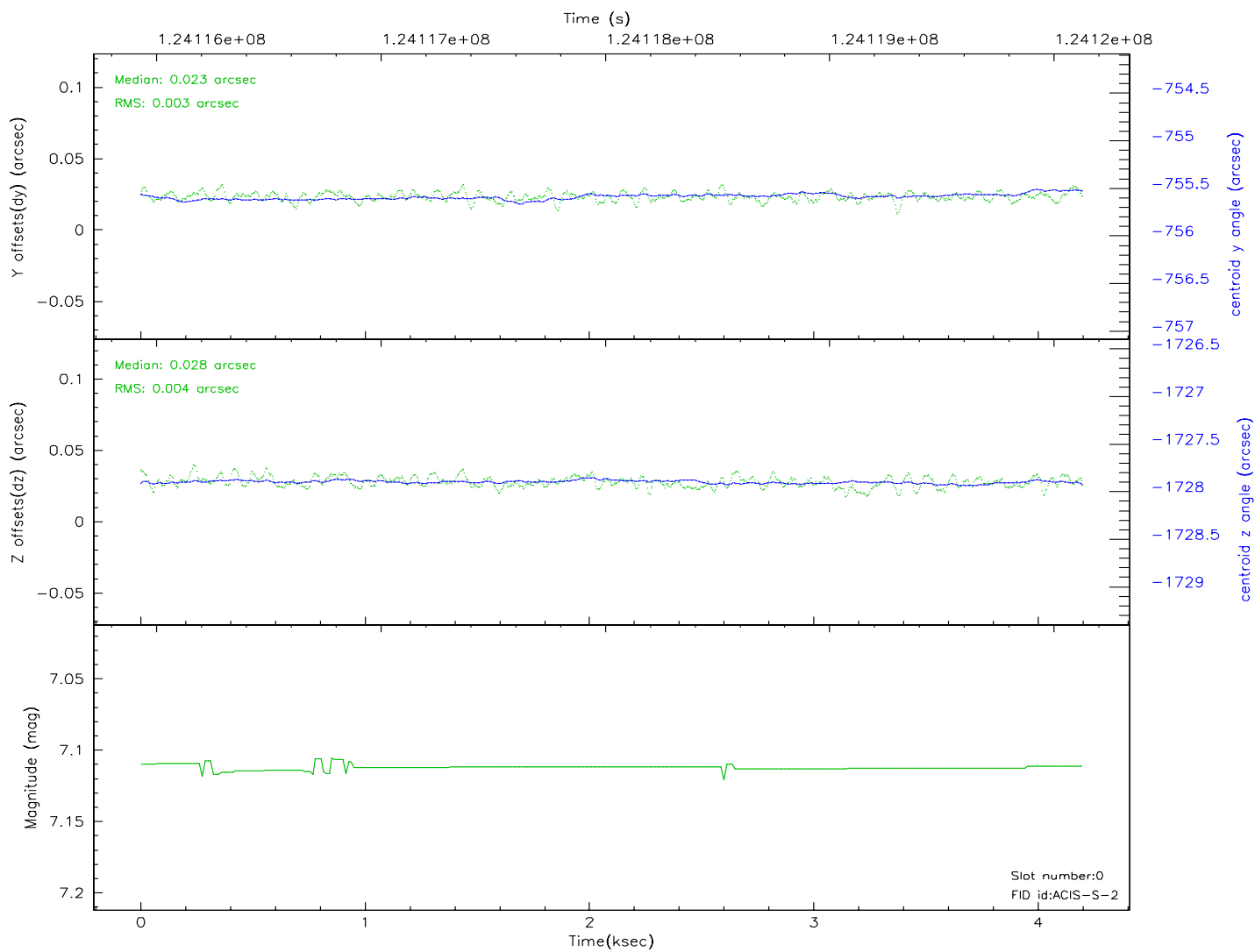
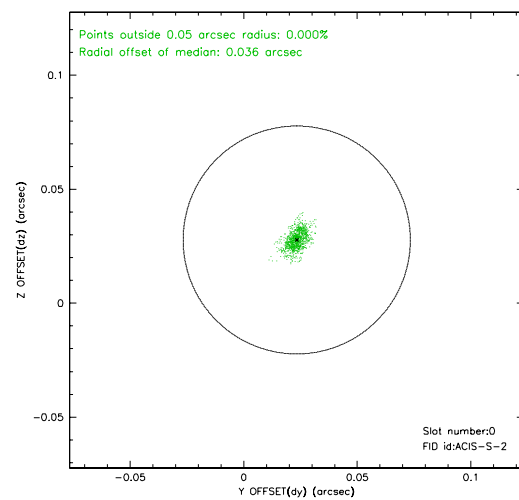
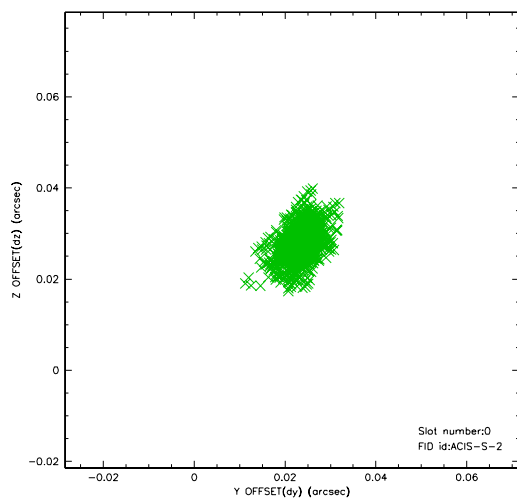


2.4.5 Slot 7

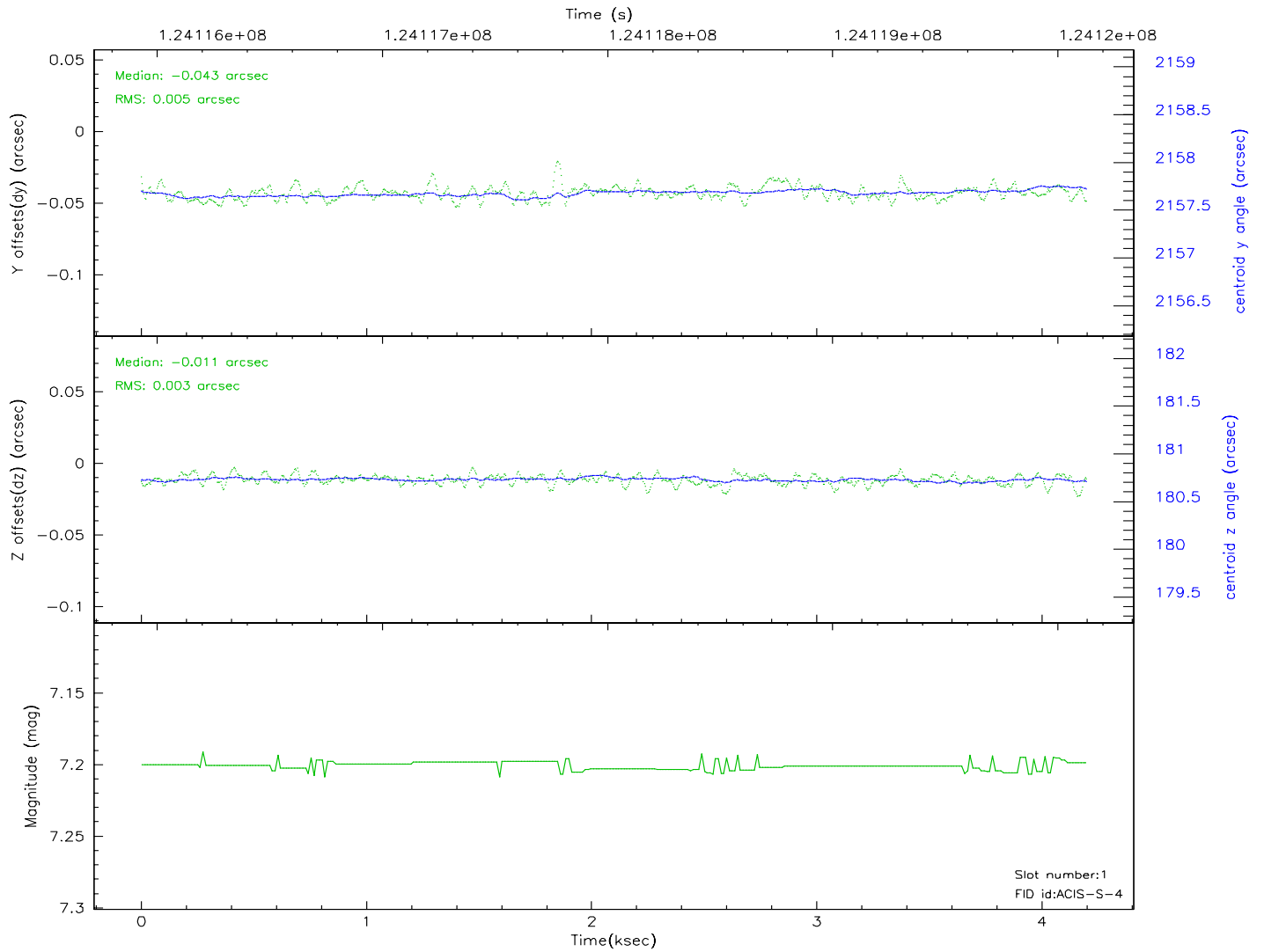
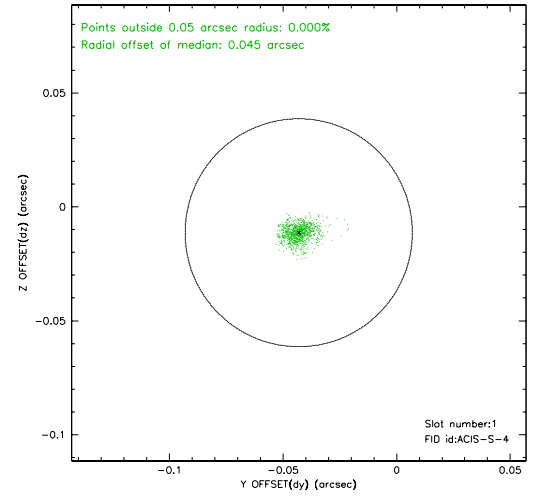
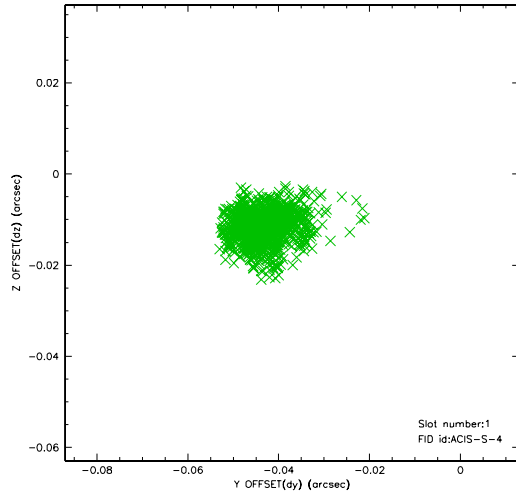


2.5 FID Slots

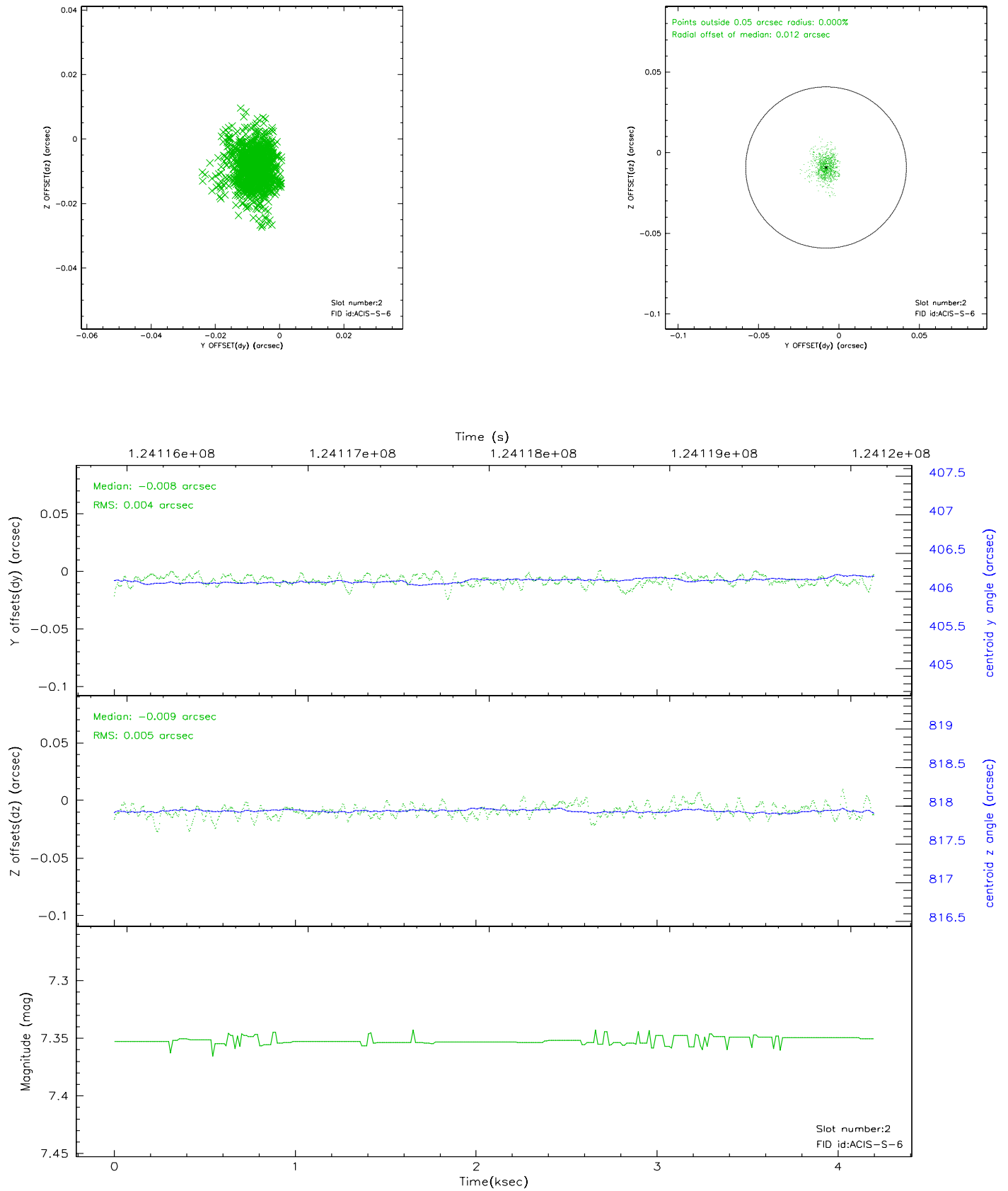
2.5.1 Slot 0



2.5.2 Slot 1



2.5.3 Slot 2



3 Point Sources

A Summary

A.1 Status

V&V Scientist	Beth Sundheim
V&V Date (YYYY-MM-DD)	2007.01.21
V&V Edition	1
V&V Disposition and Status	OK
V&V Charge Time	2.966

A.2 Comments