

# V&V Reference Report

## L2 ASCDS Version : 8.4.5

Observation 2584 - L2 Version 3  
Chandra X-Ray Center

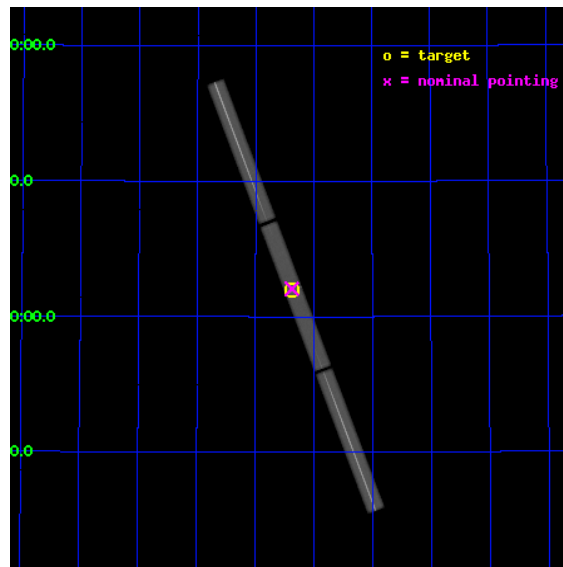
L2 Processing Date : Sep 30 2012

## Contents

<b>1</b>	<b>Front</b>	<b>2</b>
<b>2</b>	<b>OBI</b>	<b>3</b>
2.1	OBI . . . . .	3
2.1.1	Images . . . . .	3
2.1.2	Parameters . . . . .	4
2.1.3	Events . . . . .	4
2.2	Compared Parameters . . . . .	5
2.3	Aspect . . . . .	6
2.4	Star Slots . . . . .	9
2.4.1	Slot 3 . . . . .	9
2.4.2	Slot 4 . . . . .	10
2.4.3	Slot 5 . . . . .	11
2.4.4	Slot 6 . . . . .	12
2.4.5	Slot 7 . . . . .	13
2.5	FID Slots . . . . .	14
2.5.1	Slot 0 . . . . .	14
2.5.2	Slot 1 . . . . .	15
2.5.3	Slot 2 . . . . .	16
<b>3</b>	<b>Gratings</b>	<b>17</b>
3.1	LETG Arm . . . . .	17
<b>A</b>	<b>Summary</b>	<b>19</b>
A.1	Status . . . . .	19
A.2	Comments . . . . .	19

# 1 Front

seq_num	290140	Sequence number
obs_id	2584	Observation id
title	AO3 CALIBRATION OBSERVATIONS OF HZ43	Proposal title
observer	Dr. CXC Calibration	Principal investigator
object	HZ43	Source name
ra_targ	199.092083	Observer's specified target RA [deg]
dec_targ	29.099	Observer's specified target Dec [deg]
ra_nom	199.0941280722	Nominal RA [deg]
dec_nom	29.103268692798	Nominal Dec [deg]
roll_nom	69.096062279176	Nominal Roll [deg]
revision	3	Processing version of data
ontime	19189.025770843	[s]
livetime	19008.92004804	Ontime multiplied by DTCOR
l2events	1775129	Number of level 2 events

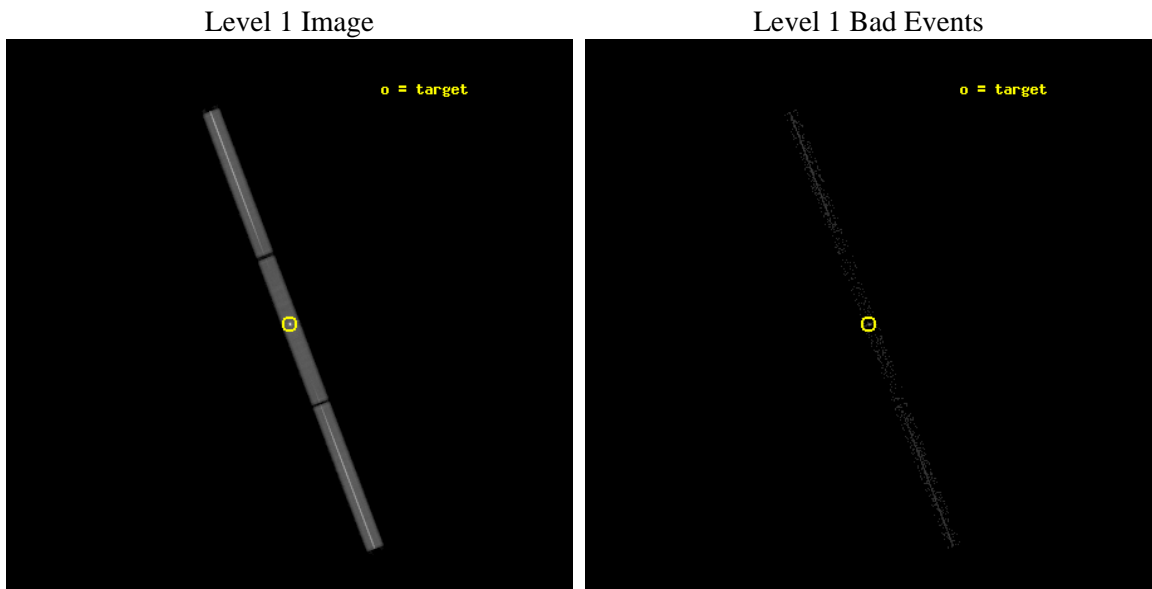




## 2 OBI

### 2.1 OBI

#### 2.1.1 Images



### 2.1.2 Parameters

obi_num	1	Obi number	sched_exp_time	19000.000000	[s] Scheduled observation exposure time
ascdsver	8.4.5	Processing system revision	ontime	19189.025770843	[s]
caldsver	4.5.2	&#160	l1events	2226311	Number of level 1 events
date	2012-09-30T02:28:26	Date and time of file creation			
revision	3	Processing version of data			

### 2.1.3 Events

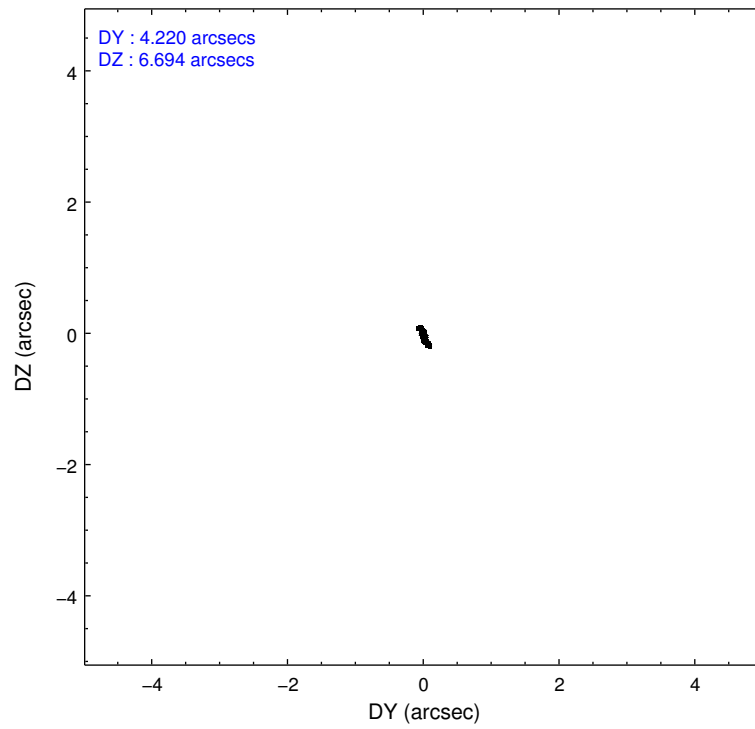
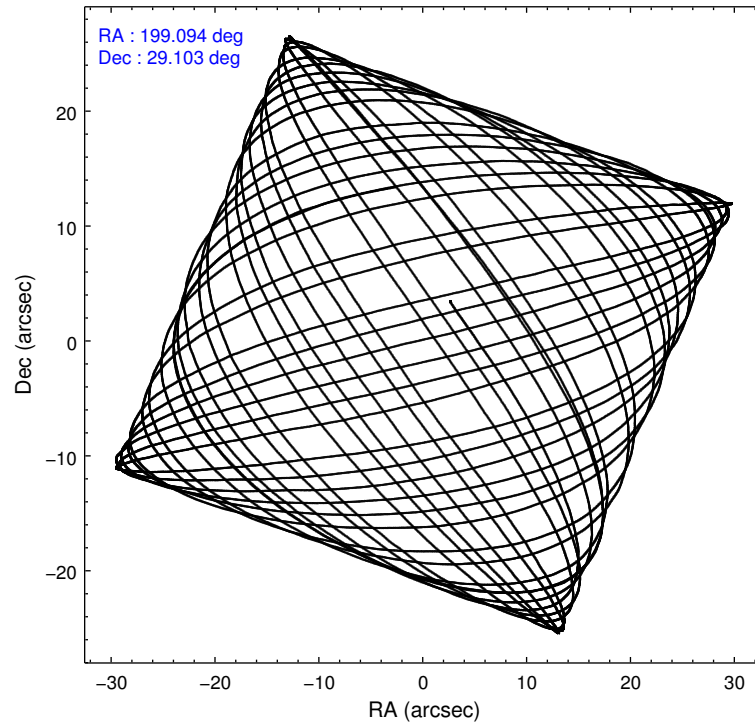
Level 1 Events

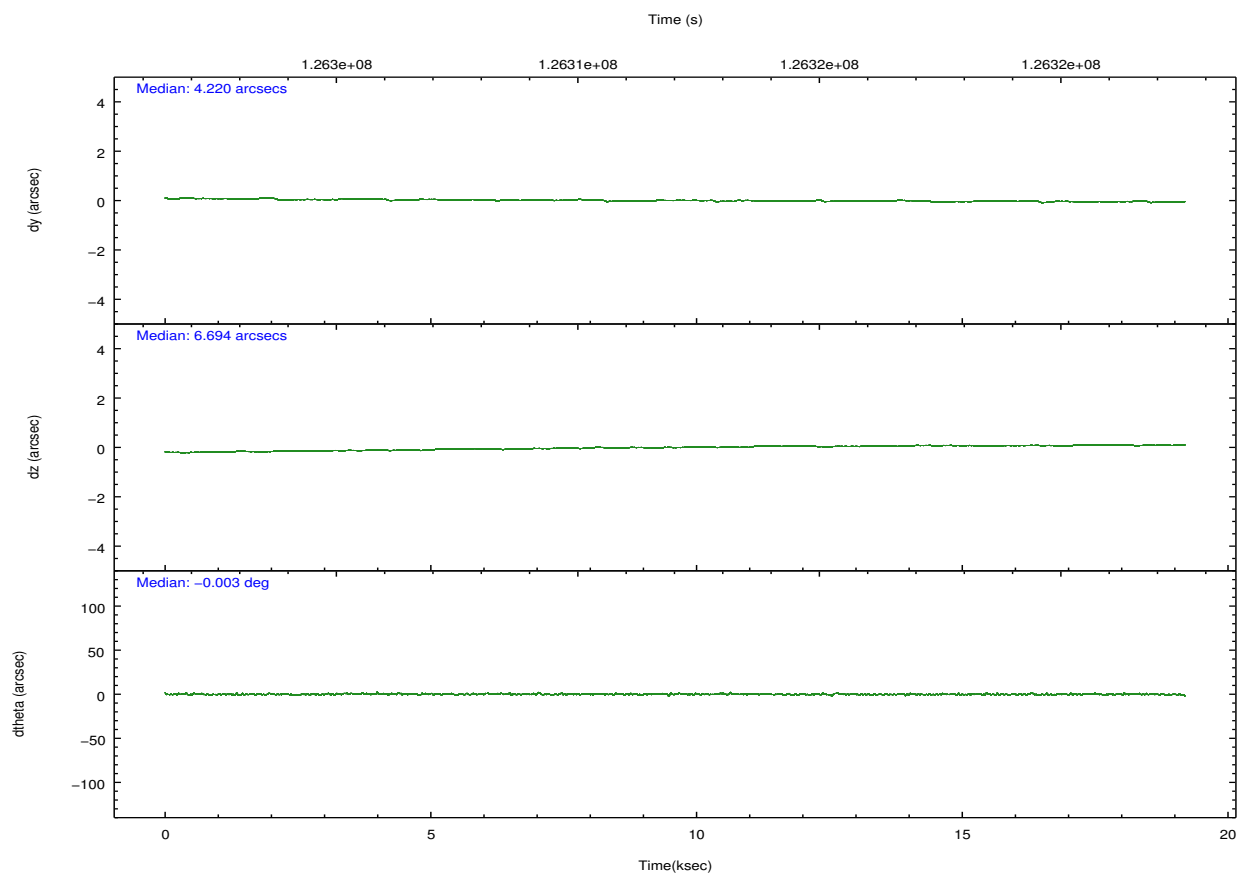
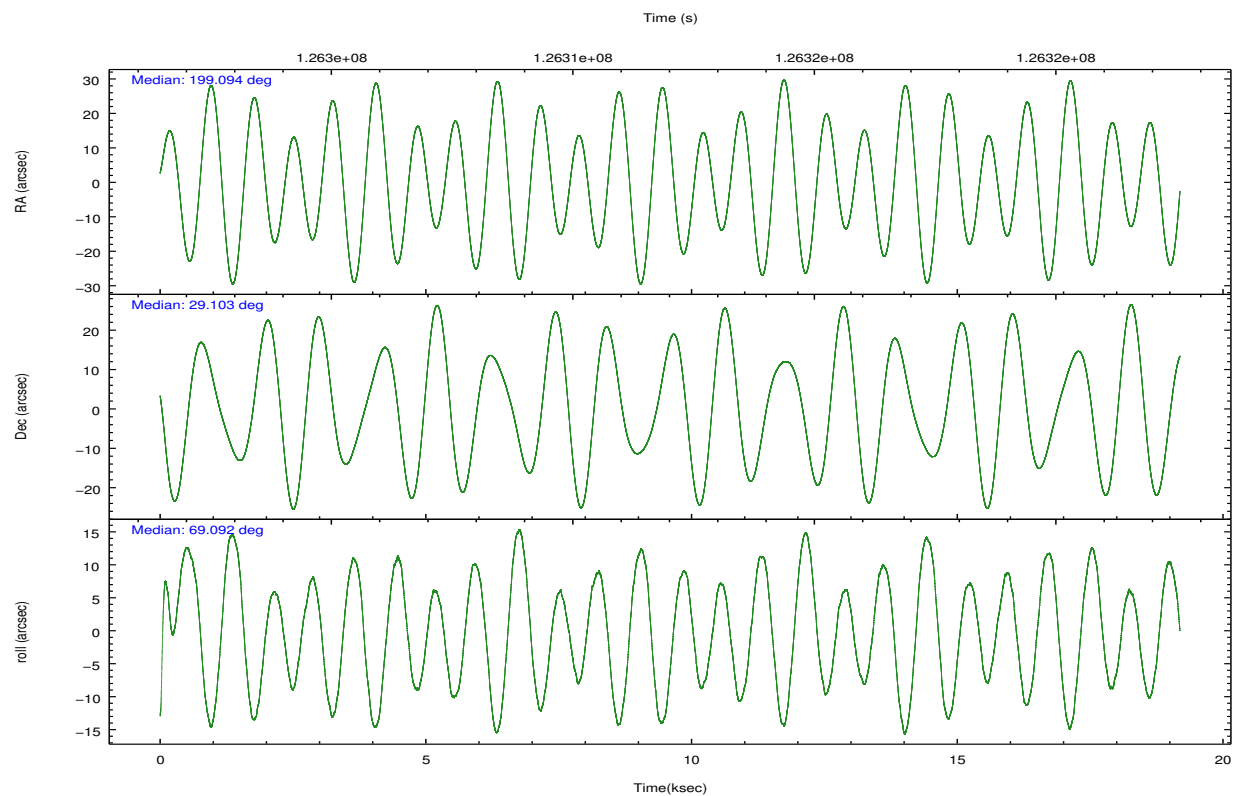
	<b>segment 1</b>	<b>segment 2</b>	<b>segment 3</b>
level 1 events	783987	659394	782930
rejected events	18099	16941	18033
rejected %	2%	2%	2%

## 2.2 Compared Parameters

Parameter	Planned	Actual	Parameter	Planned	Actual
Instrument	HRC	HRC	Obspar format version number	7	7
Detector	HRC-S	HRC-S	Obspar file type	PREDICTED	ACTUAL
Grating	LETG	LETG	Obspar update status	NONE	UPDATED
Data mode	OBSERVING	OBSERVING			
Observation mode	POINTING	POINTING			
[deg] Pointing RA	199.100896	199.0941280721962			
[deg] Pointing Dec	29.075342	29.10326869279822			
[deg] Pointing Roll	69.025454	69.0960622791761			
[s] Window start time (MET)	123552064.184000	123552064.184000			
[s] Window stop time (MET)	128822464.184000	128822464.184000			
[mm] SIM focus pos	-1.429586	-1.428180813131781			
[mm] SIM defocus	0.1037507710433287	0.1051558262725154			
[mm] SIM translation stage pos	250.455976	250.4635187648994			
[mm] SIM translation stage offset	0	-0.007540371344731511			
[s] Observation start time (MET)	126302605.184000	126301906.20221			
Observation start date	2002-01-01T20:02:21	2002-01-01T19:51:46			
[s] Observation end time (MET)	126321605.184000	126321775.82801			
Observation end date	2002-01-02T01:19:01	2002-01-02T01:22:55			

## 2.3 Aspect



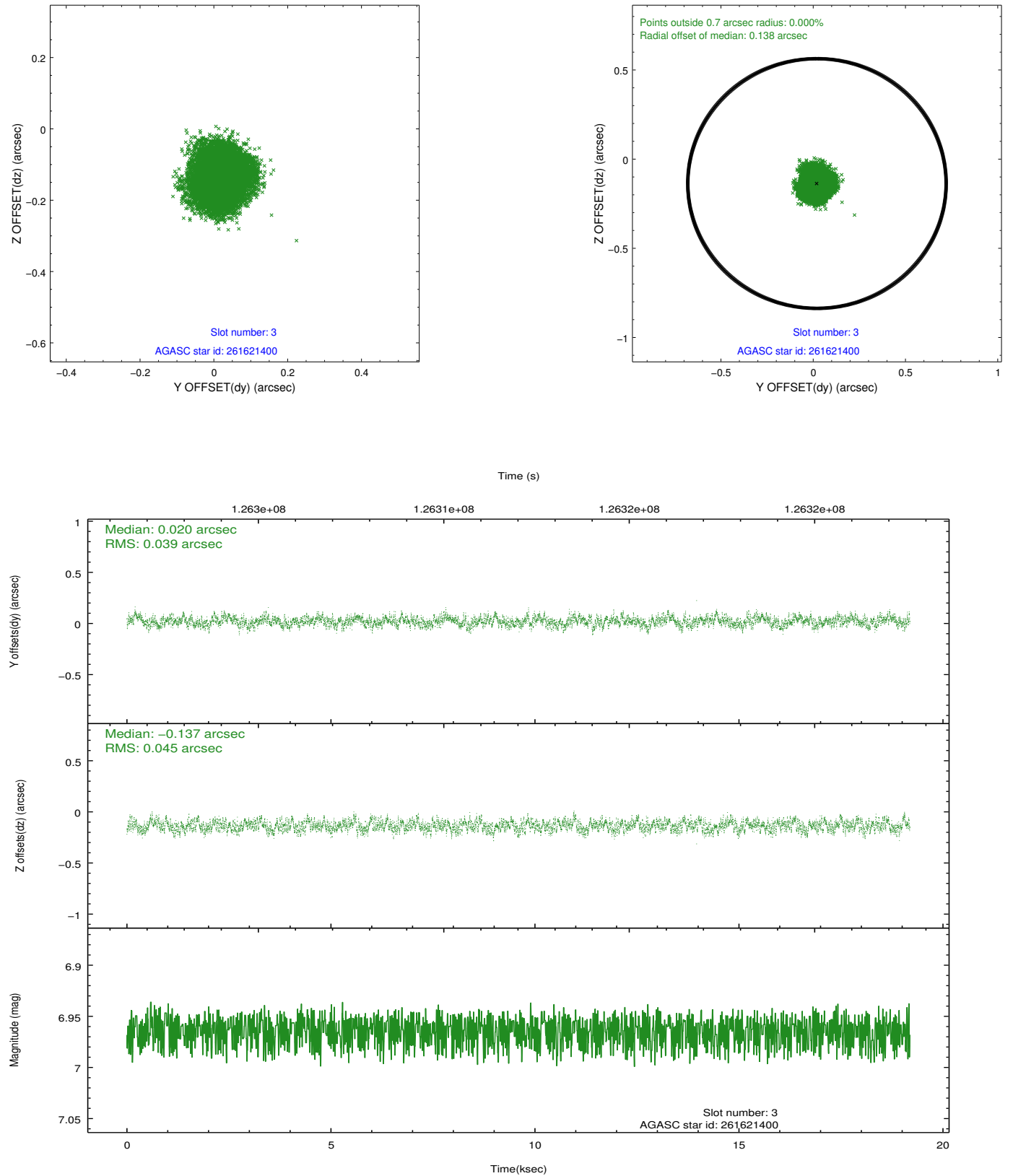


### Slot Statistics

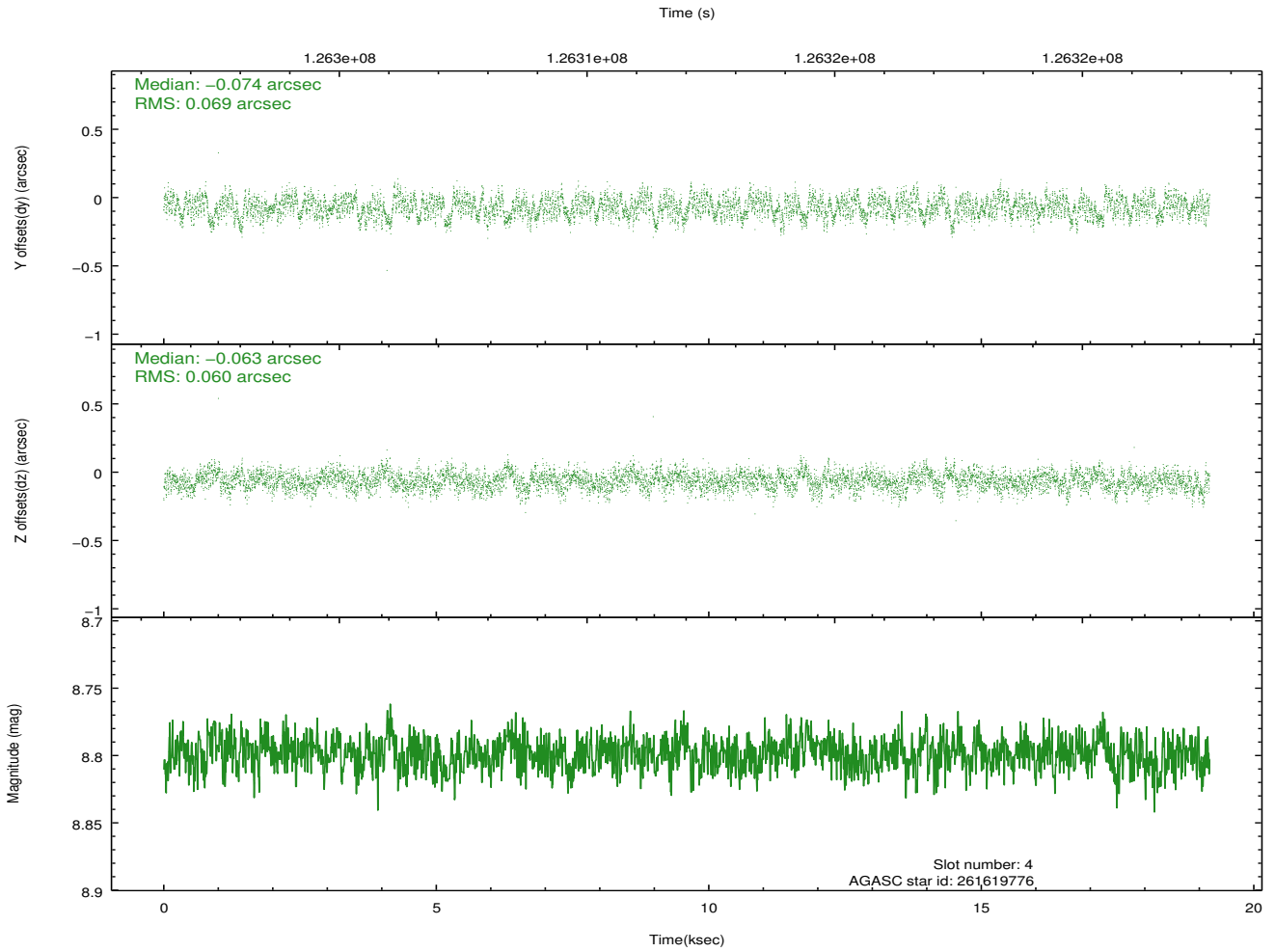
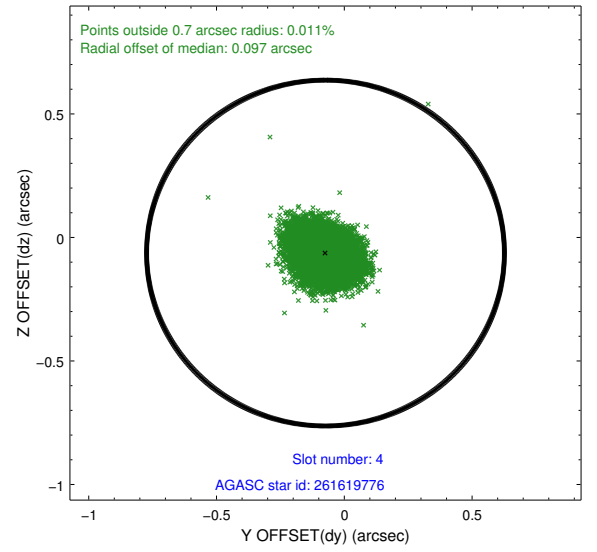
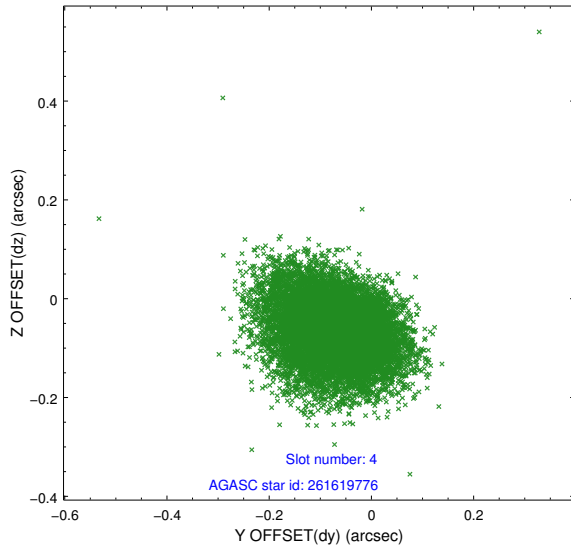
slot	status	id	mag	n_pts	med_dy	med_dz	dr1	dr2	ra	dec	mean_y	mean_z
0	FID	HRC-S-1	7.01	4681	0.151	-0.121	0.009	0.015	0.000000	0.000000	-1158.29	-455.15
1	FID	HRC-S-2	7.00	4681	0.084	-0.090	0.005	0.009	0.000000	0.000000	1241.08	-447.88
2	FID	HRC-S-3	7.02	4681	0.155	-0.091	0.009	0.016	0.000000	0.000000	-1160.73	574.31
3	GUIDE	261621400	6.96	9362	0.020	-0.137	0.066	0.099	198.901600	28.741982	-1345.39	158.57
4	GUIDE	261619776	8.80	9361	-0.074	-0.063	0.098	0.155	198.654383	29.401174	595.99	1729.06
5	GUIDE	261619992	9.32	9348	0.215	-0.120	0.097	0.157	198.395553	28.647634	-2229.19	1532.66
6	GUIDE	261623040	9.13	9361	-0.220	-0.074	0.075	0.122	198.792686	29.757643	1949.25	1780.13
7	GUIDE	261623624	9.12	9353	0.060	0.388	0.102	0.160	199.611555	28.454113	-1506.17	-2307.35

## 2.4 Star Slots

### 2.4.1 Slot 3

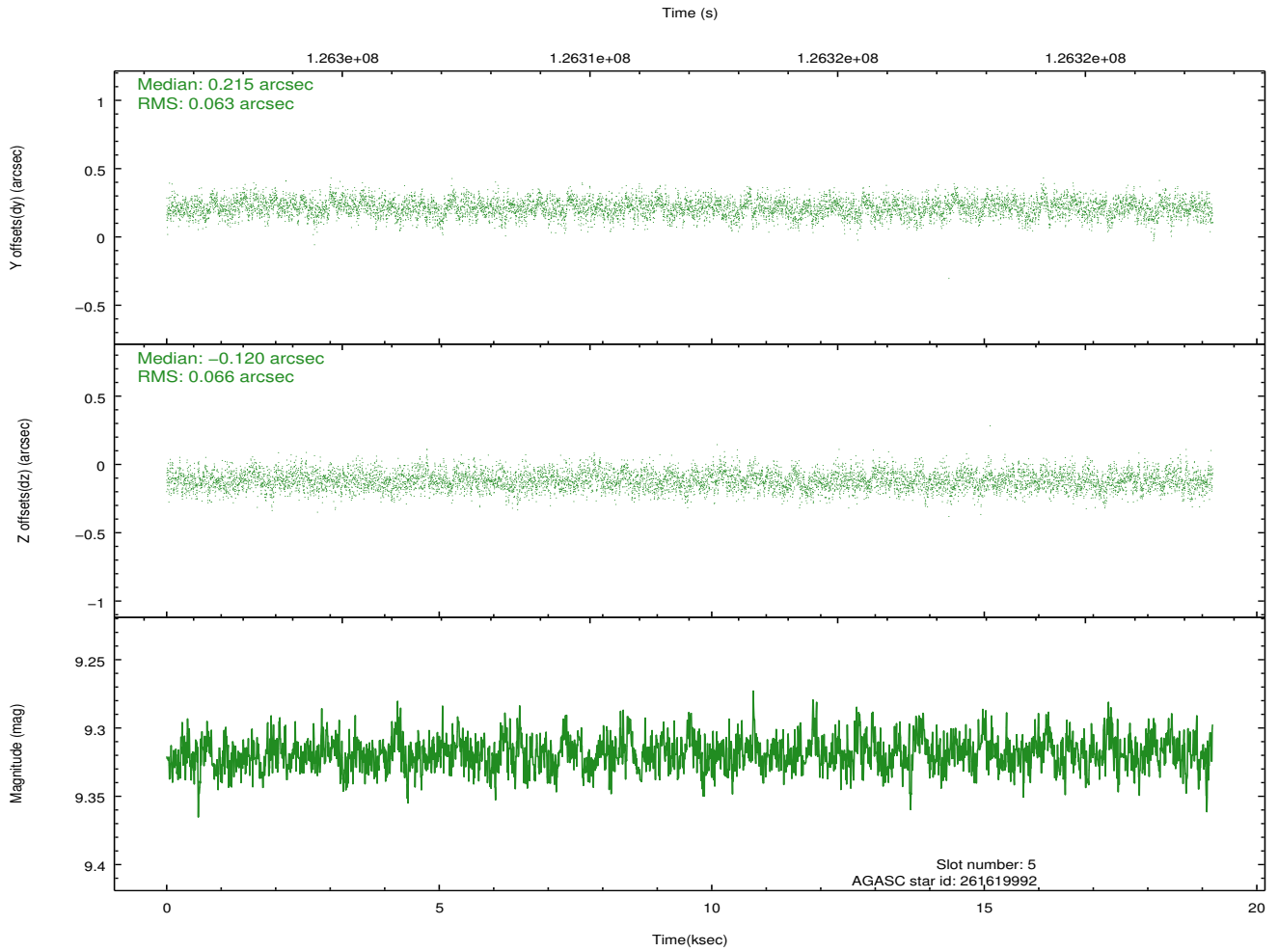
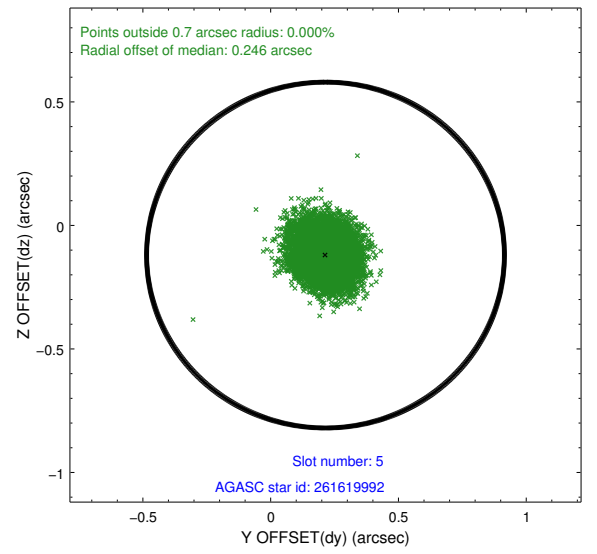
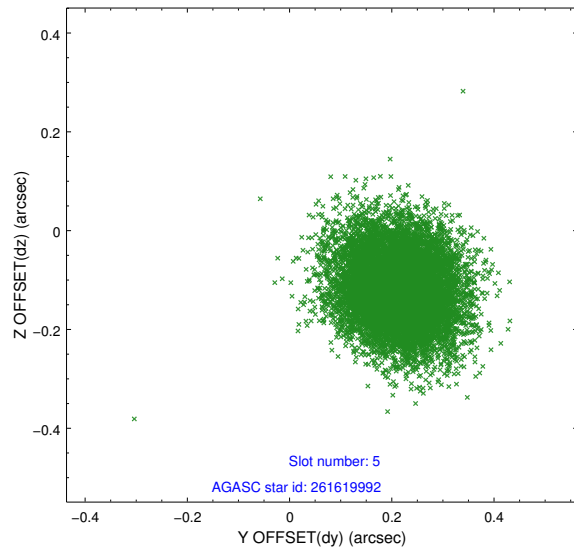


## 2.4.2 Slot 4

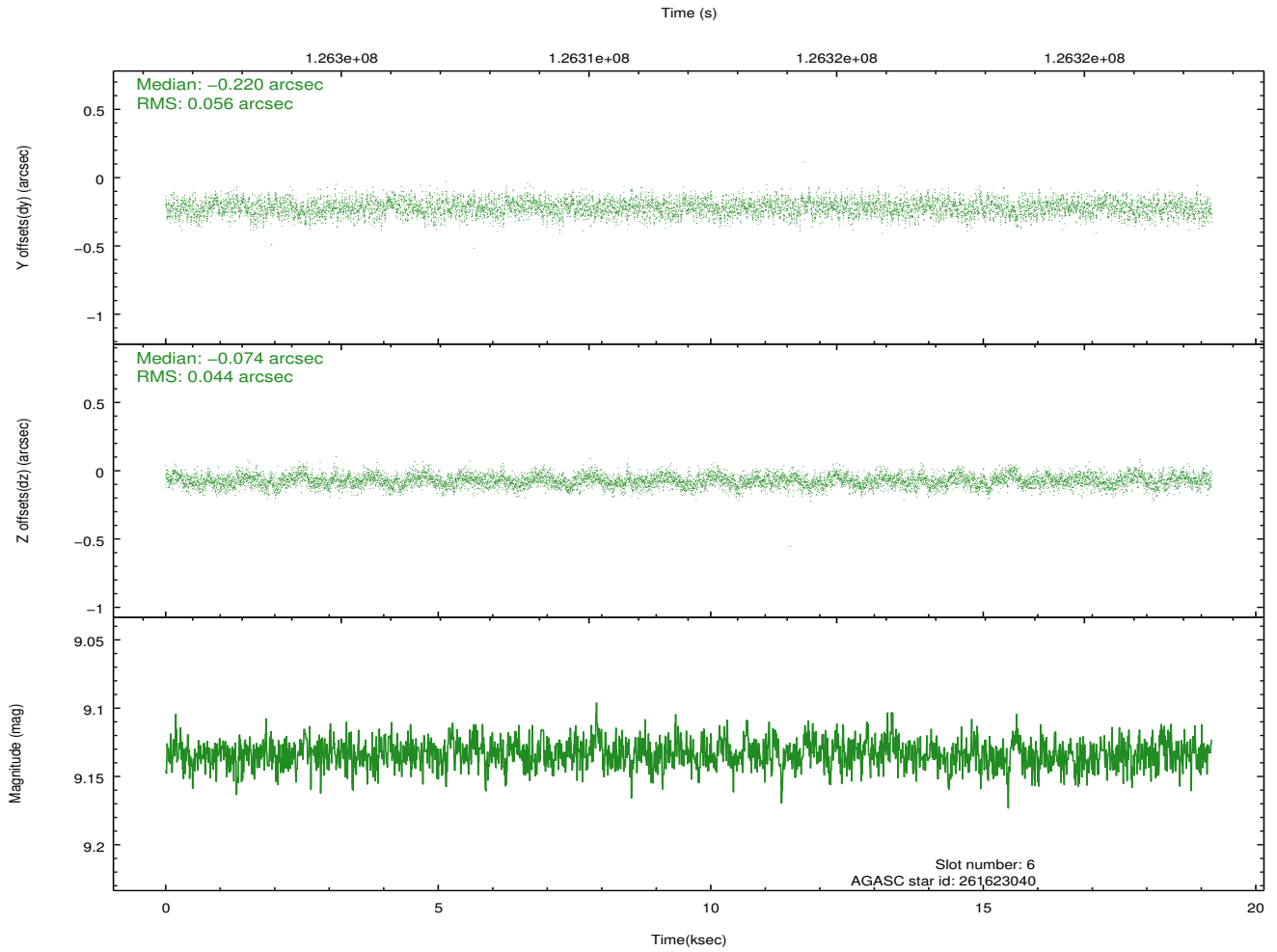
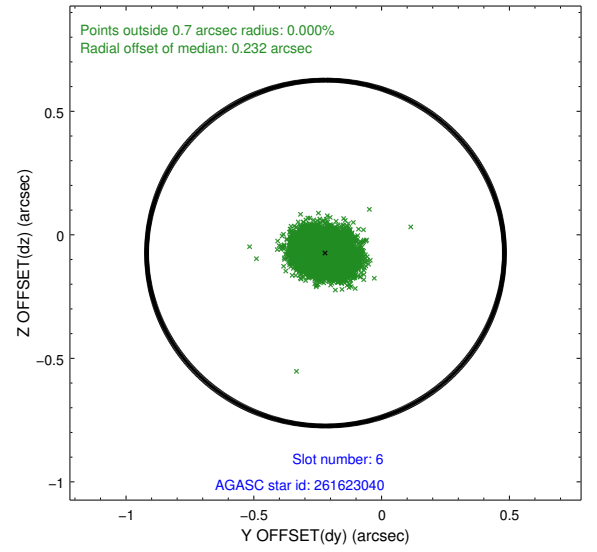
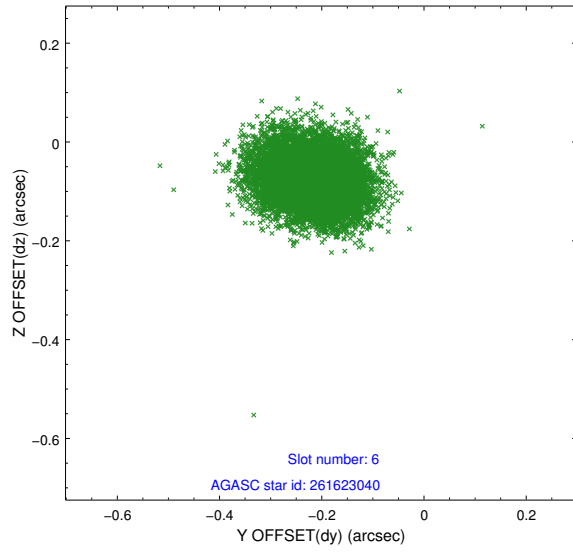




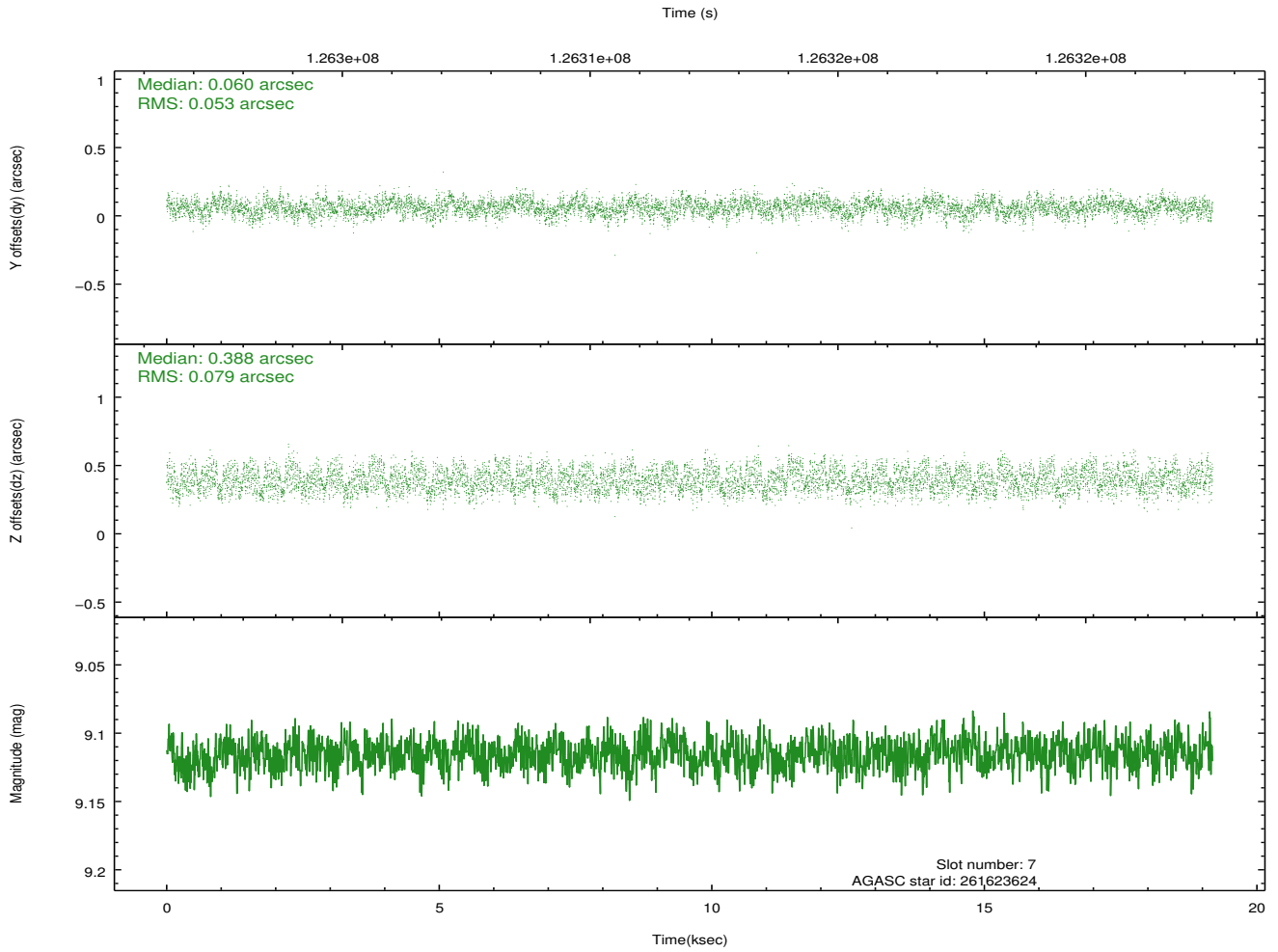
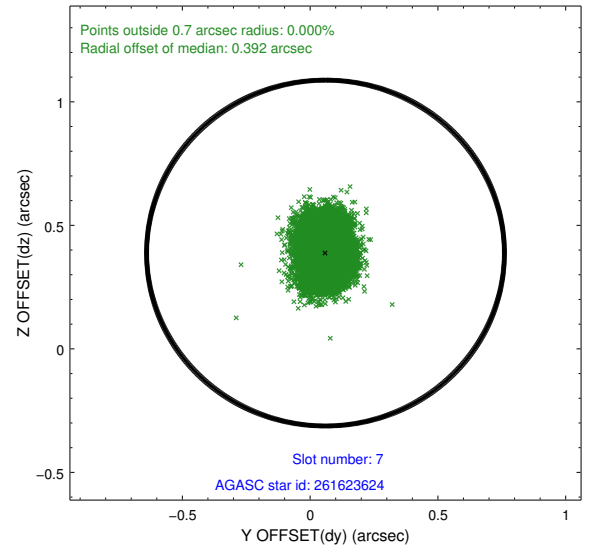
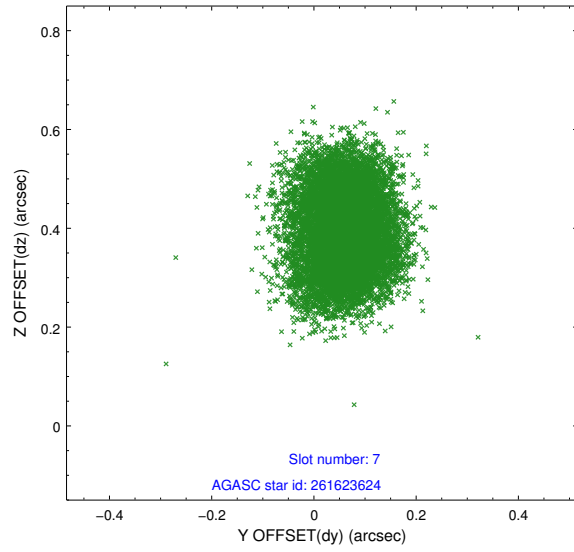
### 2.4.3 Slot 5



## 2.4.4 Slot 6

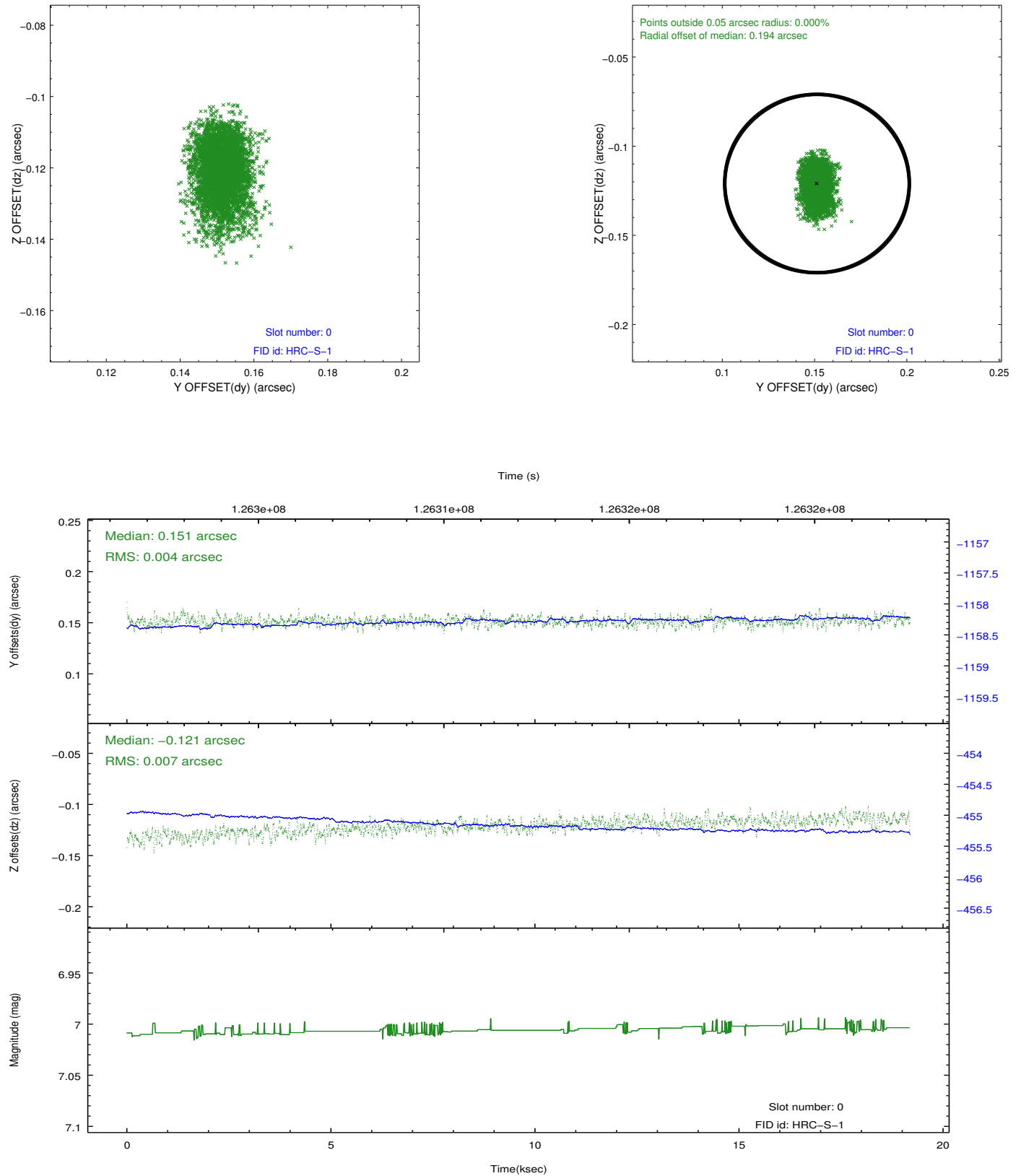


## 2.4.5 Slot 7

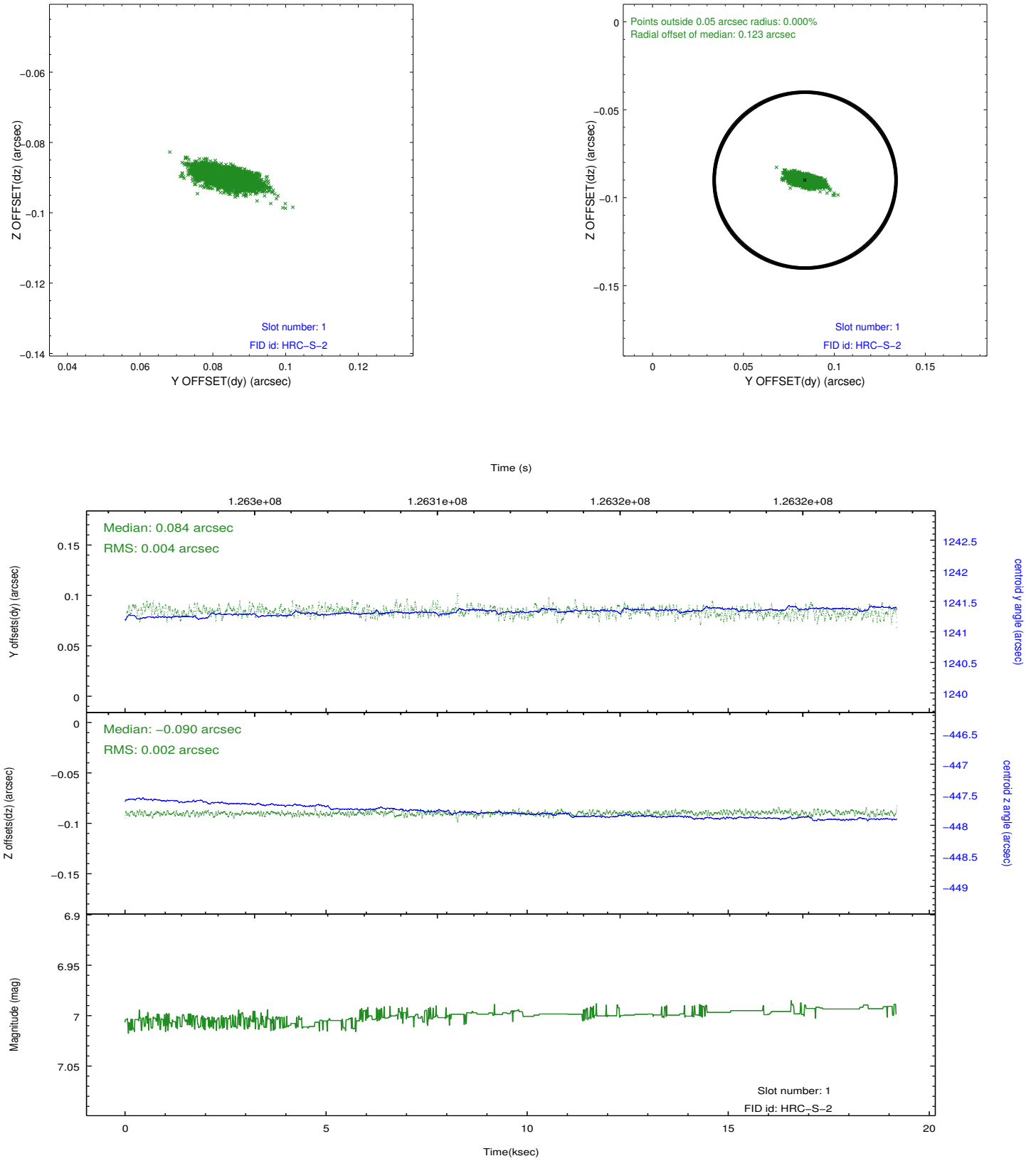


## 2.5 FID Slots

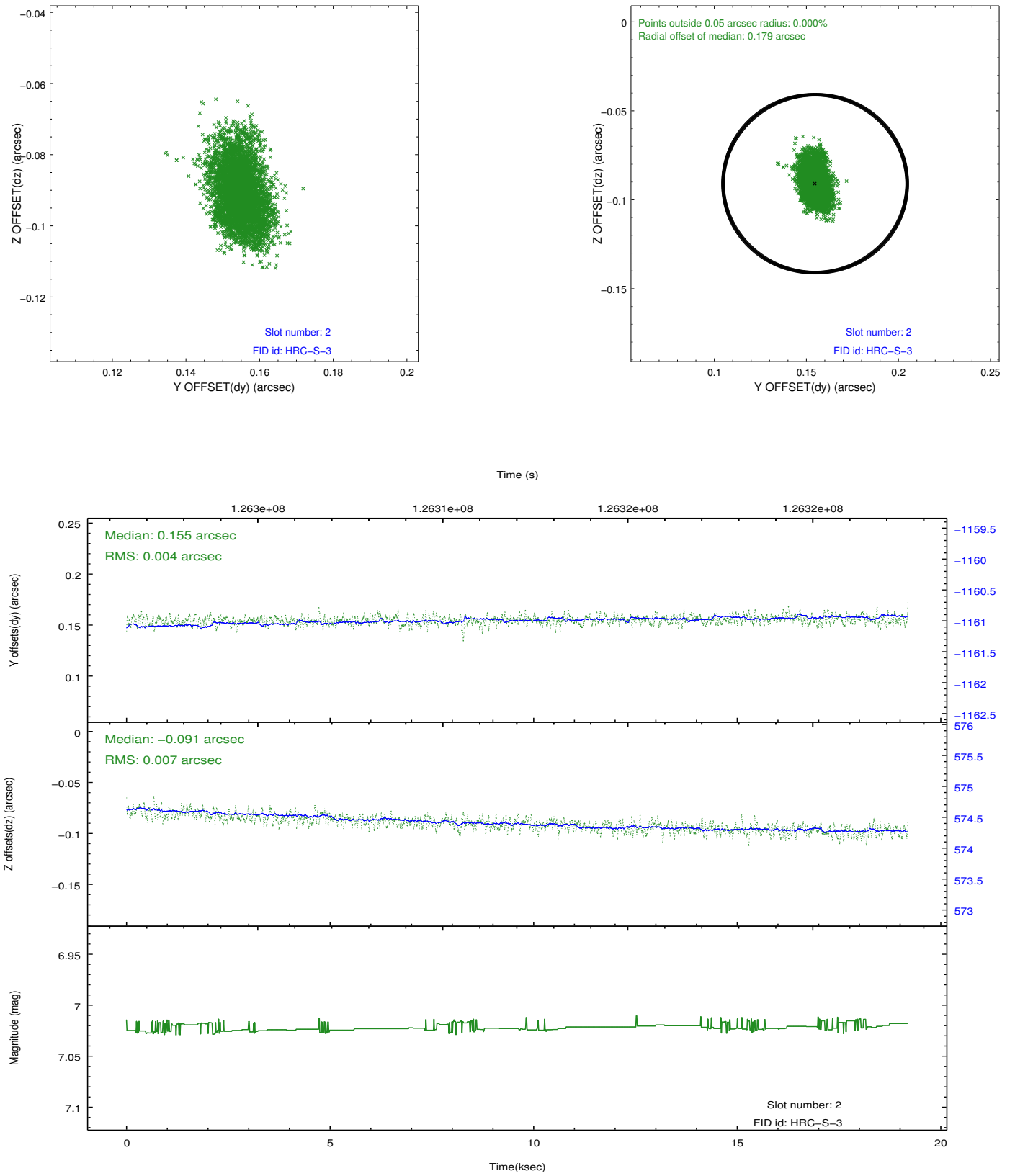
### 2.5.1 Slot 0



## 2.5.2 Slot 1

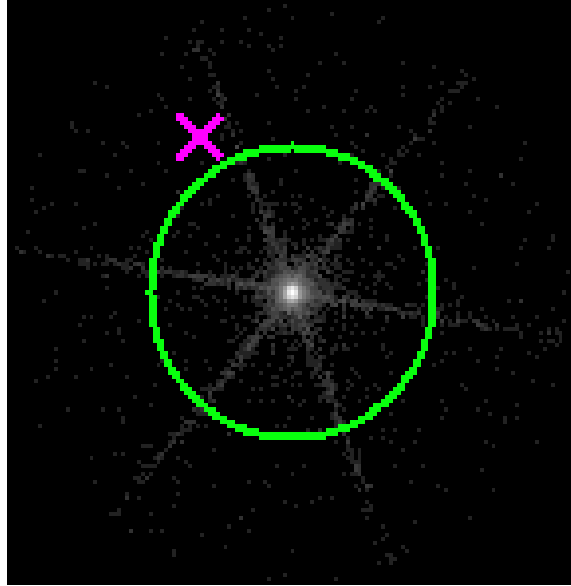


### 2.5.3 Slot 2

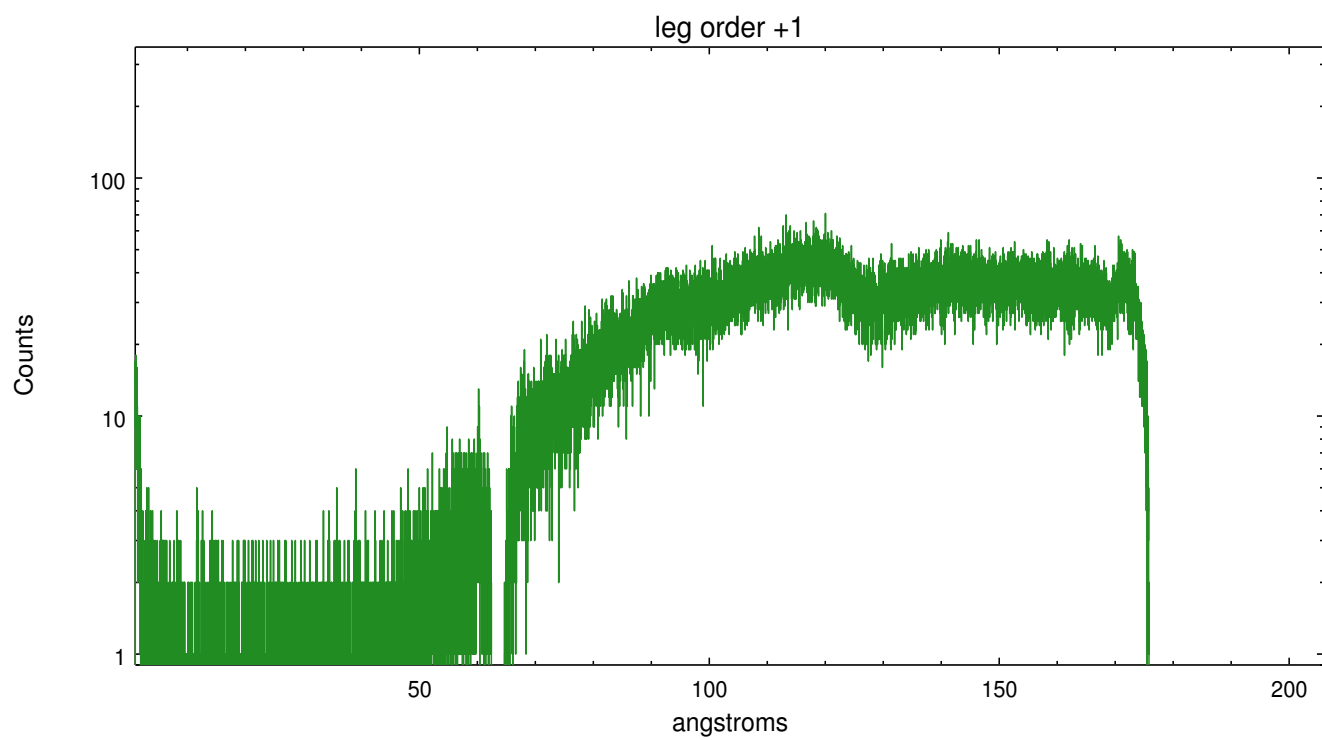
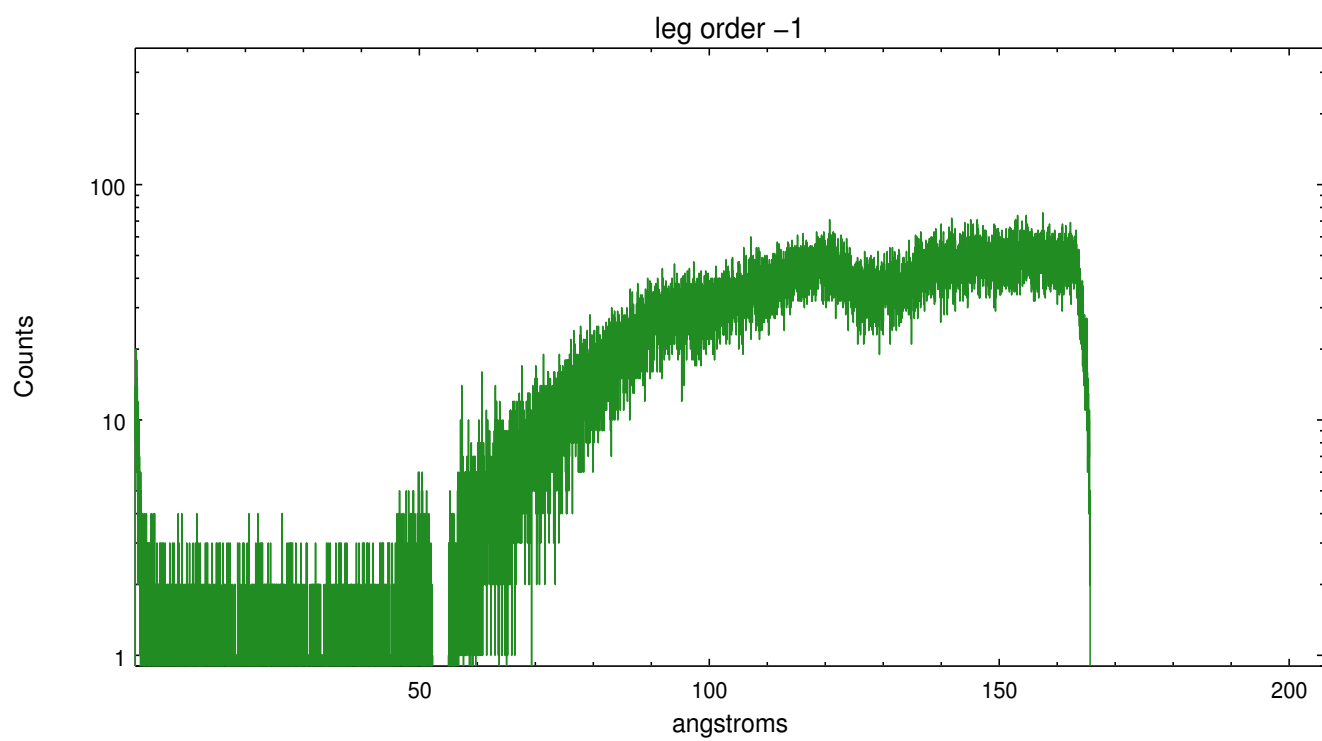


## 3 Gratings

### 3.1 LETG Arm



LETG Zero Order





## A Summary

### A.1 Status

V&V Scientist	Joy Nichols
V&V Date (YYYY-MM-DD)	2012.10.03
V&V Edition	1
V&V Disposition and Status	OK
V&V Charge Time	19.183

### A.2 Comments