

V&V Reference Report

L2 ASCDS Version : 8.4.5

Observation 2424 - L2 Version 3
Chandra X-Ray Center

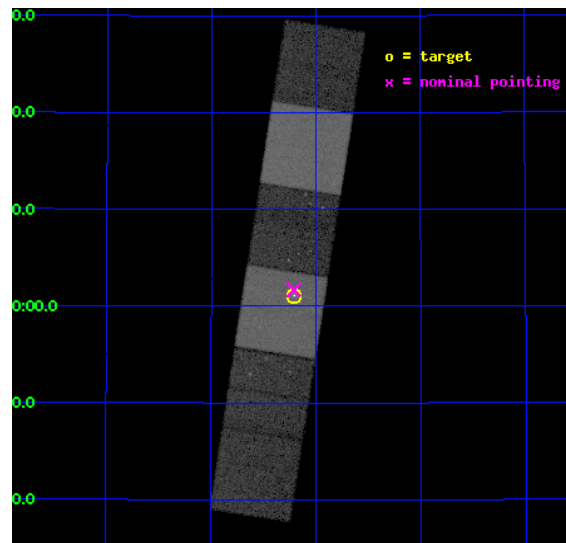
L2 Processing Date : Sep 12 2012

Contents

1	Front	2
2	OBI	3
2.1	OBI	3
2.1.1	Images	3
2.1.2	Bias	3
2.1.3	Parameters	4
2.1.4	Events	4
2.2	Compared Parameters	5
2.3	Aspect	6
2.4	Star Slots	9
2.4.1	Slot 3	9
2.4.2	Slot 4	10
2.4.3	Slot 5	11
2.4.4	Slot 6	12
2.4.5	Slot 7	13
2.5	FID Slots	14
2.5.1	Slot 0	14
2.5.2	Slot 1	15
2.5.3	Slot 2	16
A	Summary	17
A.1	Status	17
A.2	Comments	17

1 Front

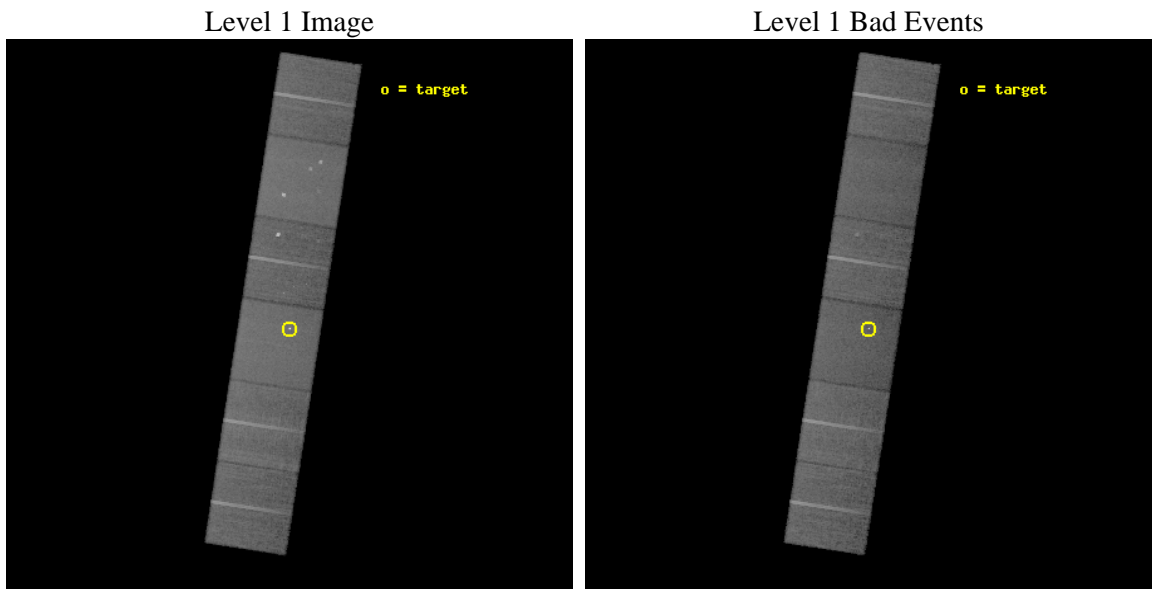
seq_num	500197	Sequence number
obs_id	2424	Observation id
title	CHANDRA OBSERVATION OF THE X-RAY AFTERGLOW OF GRB010222, THE BRIGHTEST GRB OBSERVED BY BEPOSAX	Proposal title
observer	Dr Luigi Piro	Principal investigator
object	GRB010222	Source name
dtcycle	0	
cycle	P	events from which exps? Prim/Second/Both
ra_targ	223.052292	Observer's specified target RA [deg]
dec_targ	43.018406	Observer's specified target Dec [deg]
ra_nom	223.05264726566	Nominal RA [deg]
dec_nom	43.028211604708	Nominal Dec [deg]
roll_nom	98.846982546049	Nominal Roll [deg]
revision	3	Processing version of data
ontime	29919.985671923	Sum of GTIs [s]
livetime	29541.120797692	Livetime [s]
ontime4	29916.759037688	Sum of GTIs [s]
ontime5	29919.944631919	Sum of GTIs [s]
ontime6	29919.903591931	Sum of GTIs [s]
ontime7	29919.985671923	Sum of GTIs [s]
ontime8	29919.862551928	Sum of GTIs [s]
ontime9	29919.821511924	Sum of GTIs [s]
l2events	291963	Number of level 2 events



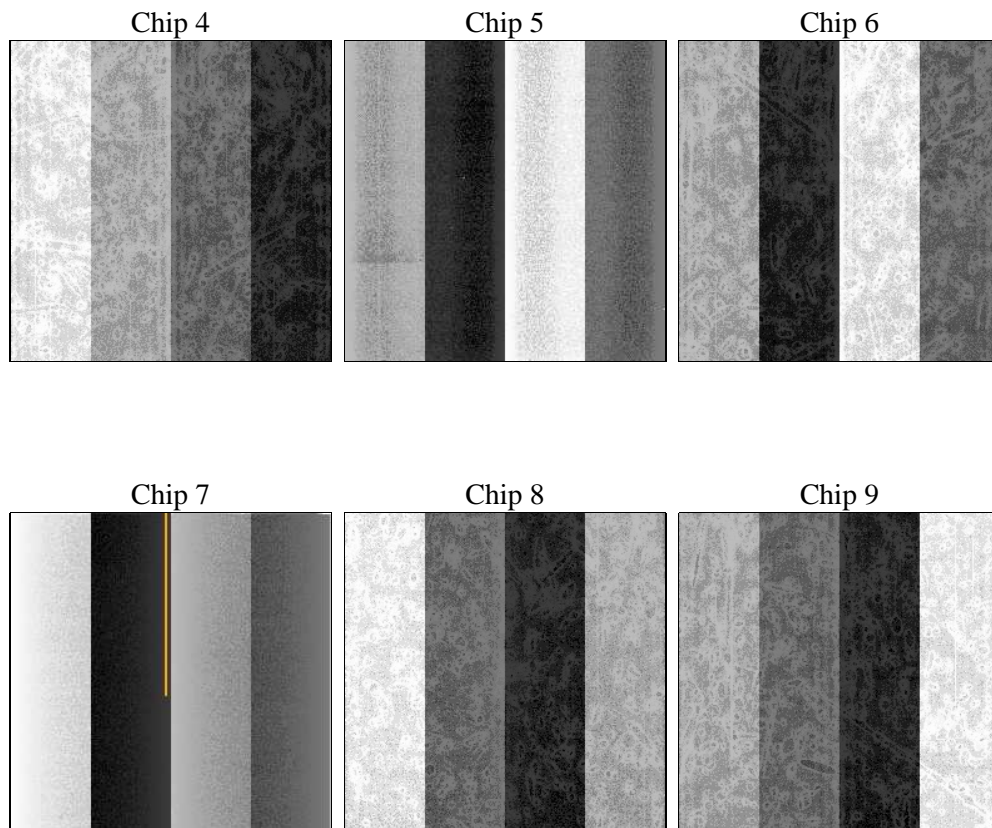
2 OBI

2.1 OBI

2.1.1 Images



2.1.2 Bias



2.1.3 Parameters

obi_num	0	Obi number	sched_exp_time	30000.000000	[s] Scheduled observation exposure time
ascdsver	8.4.5	Processing system revision	ontime	29919.985671923	Sum of GTIs [s]
caldsver	4.5.1.1	 	ontime4	29916.759037688	Sum of GTIs [s]
date	2012-09-12T01:12:50	Date and time of file creation	ontime5	29919.944631919	Sum of GTIs [s]
revision	3	Processing version of data	ontime6	29919.903591931	Sum of GTIs [s]
			ontime7	29919.985671923	Sum of GTIs [s]
			ontime8	29919.862551928	Sum of GTIs [s]
			ontime9	29919.821511924	Sum of GTIs [s]
			l1events	1339914	Number of level 1 events

2.1.4 Events

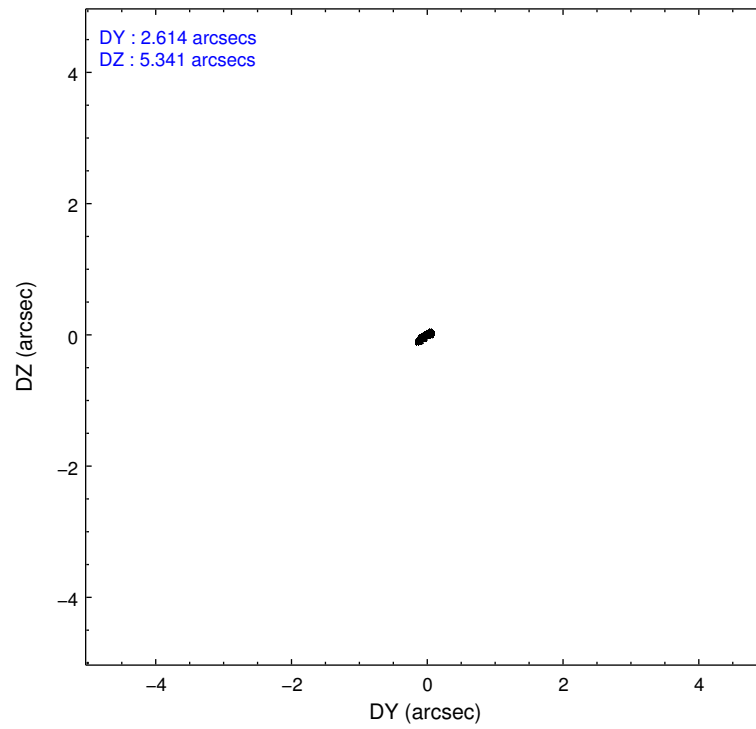
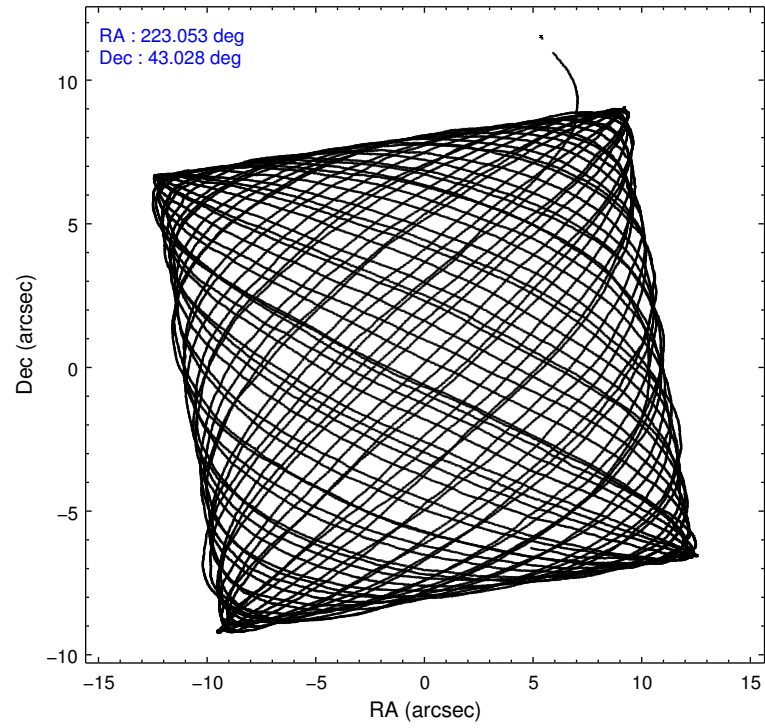
	ccd 4	ccd 5	ccd 6	ccd 7	ccd 8	ccd 9		ccd 4	ccd 5	ccd 6	ccd 7	ccd 8	ccd 9
level 1 events	205711	263605	197500	251747	233357	187994	grade 0 events	9084	15804	15353	10823	14155	8647
rejected events	183625	141734	169027	145171	188534	166376		4%	5%	7%	4%	6%	4%
rejected %	89%	53%	85%	57%	80%	88%	grade 1 events	89	367	179	464	141	85
								0%	0%	0%	0%	0%	0%
							grade 2 events	5200	33851	4487	21074	9574	4409
								2%	12%	2%	8%	4%	2%
							grade 3 events	2066	5116	2204	9696	5007	2173
								1%	1%	1%	3%	2%	1%
							grade 4 events	1969	5129	2137	9636	4464	2168
								0%	1%	1%	3%	1%	1%
							grade 5 events	6623	19817	7905	24373	10040	8257
								3%	7%	4%	9%	4%	4%
							grade 6 events	3771	61981	4295	55362	11643	4226
								1%	23%	2%	21%	4%	2%
							grade 7 events	176909	121540	160940	120319	178333	158029
								85%	46%	81%	47%	76%	84%

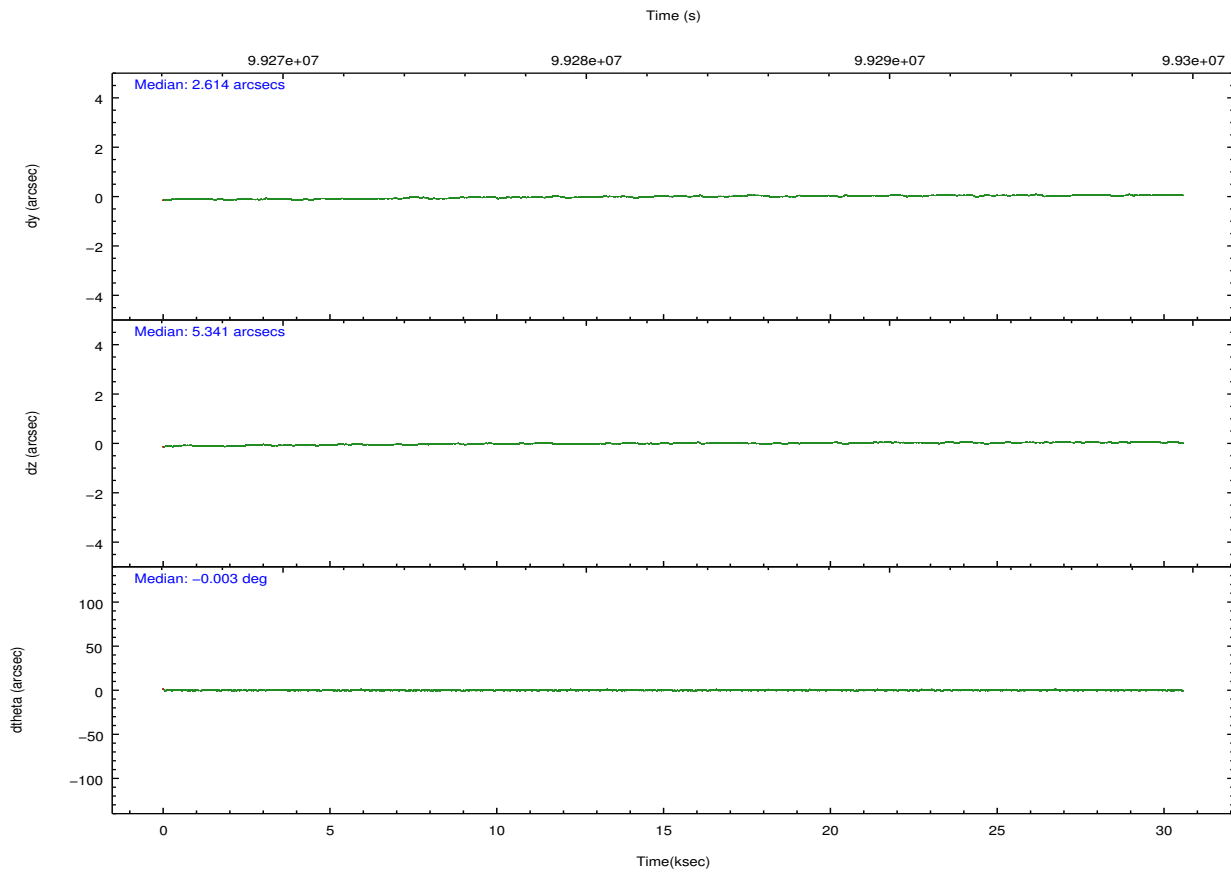
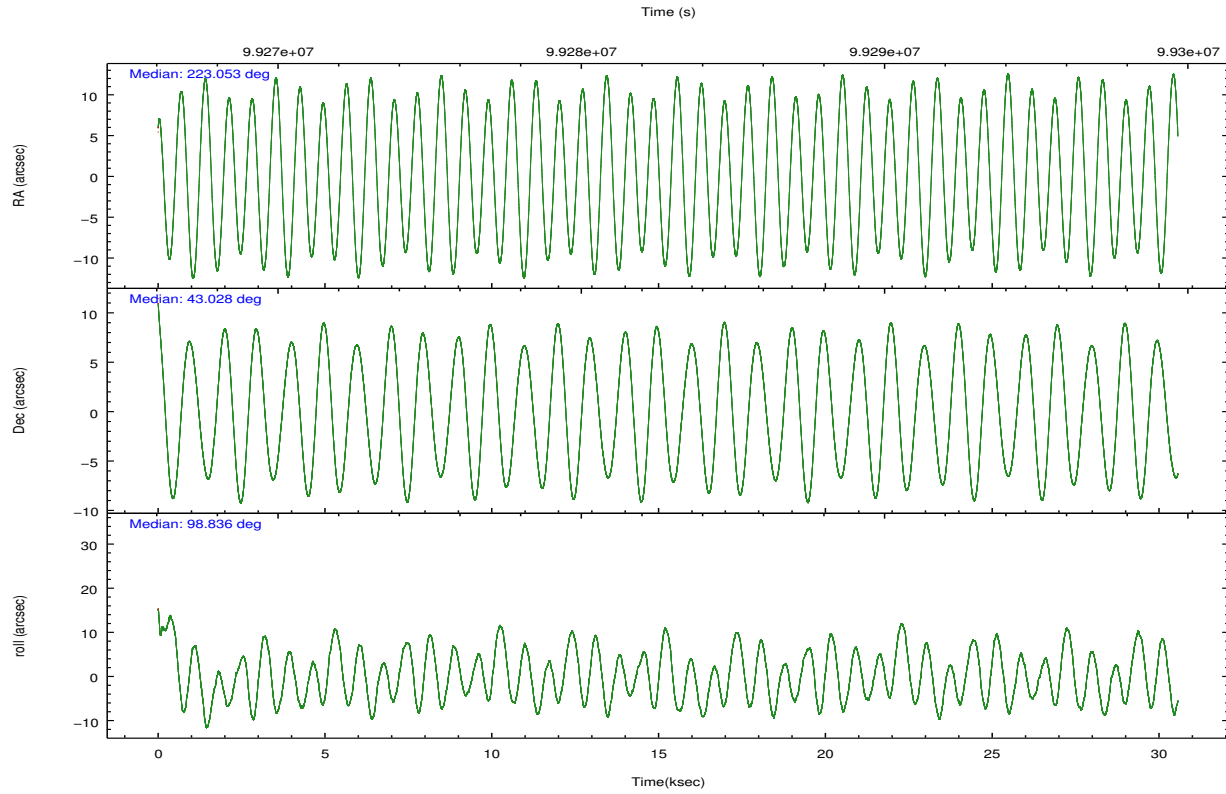
2.2 Compared Parameters

Parameter	Planned	Actual
Instrument	ACIS	ACIS
Detector	ACIS-456789	ACIS-456789
Grating	NONE	NONE
Data mode	FAINT	FAINT
Observation mode	POINTING	POINTING
[deg] Pointing RA	223.076332	223.0526472656587
[deg] Pointing Dec	43.007099	43.02821160470828
[deg] Pointing Roll	98.674200	98.84698254604946
[mm] SIM focus pos	-0.684267	-0.6828225247311905
[mm] SIM defocus	0	0.001444936568705701
[mm] SIM translation stage pos	-187.132523	-187.1254020033014
[mm] SIM translation stage offset	-3	-3.007120579706367
[s] Observation start time (MET)	99268144.184000	99266998.164654
Observation start date	2001-02-22T22:28:00	2001-02-22T22:09:58
[s] Observation end time (MET)	99298144.184000	99298677.840876
Observation end date	2001-02-23T06:48:00	2001-02-23T06:57:57
Read mode	TIMED	TIMED

Parameter	Planned	Actual
Obspar format version number	7	7
Obspar file type	PREDICTED	ACTUAL
Obspar update status	NONE	UPDATED
Number of optional ACIS chips dropped	0	0
On-chip summing requested	N	N
Subarray requested	NONE	NONE
Alternating exposures requested	N	N
[s] Primary exposure time	0.000000	3.2

2.3 Aspect



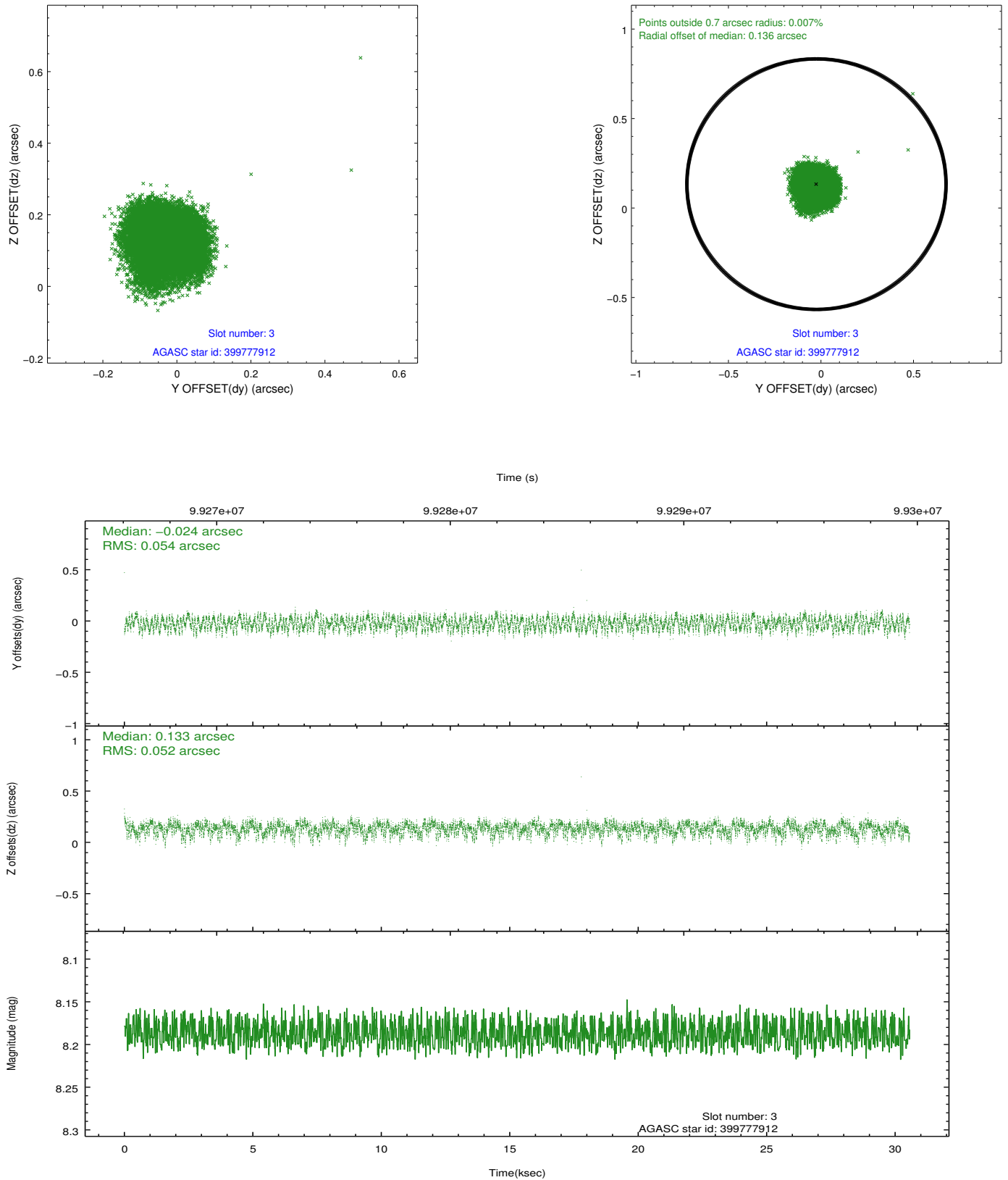


Slot Statistics

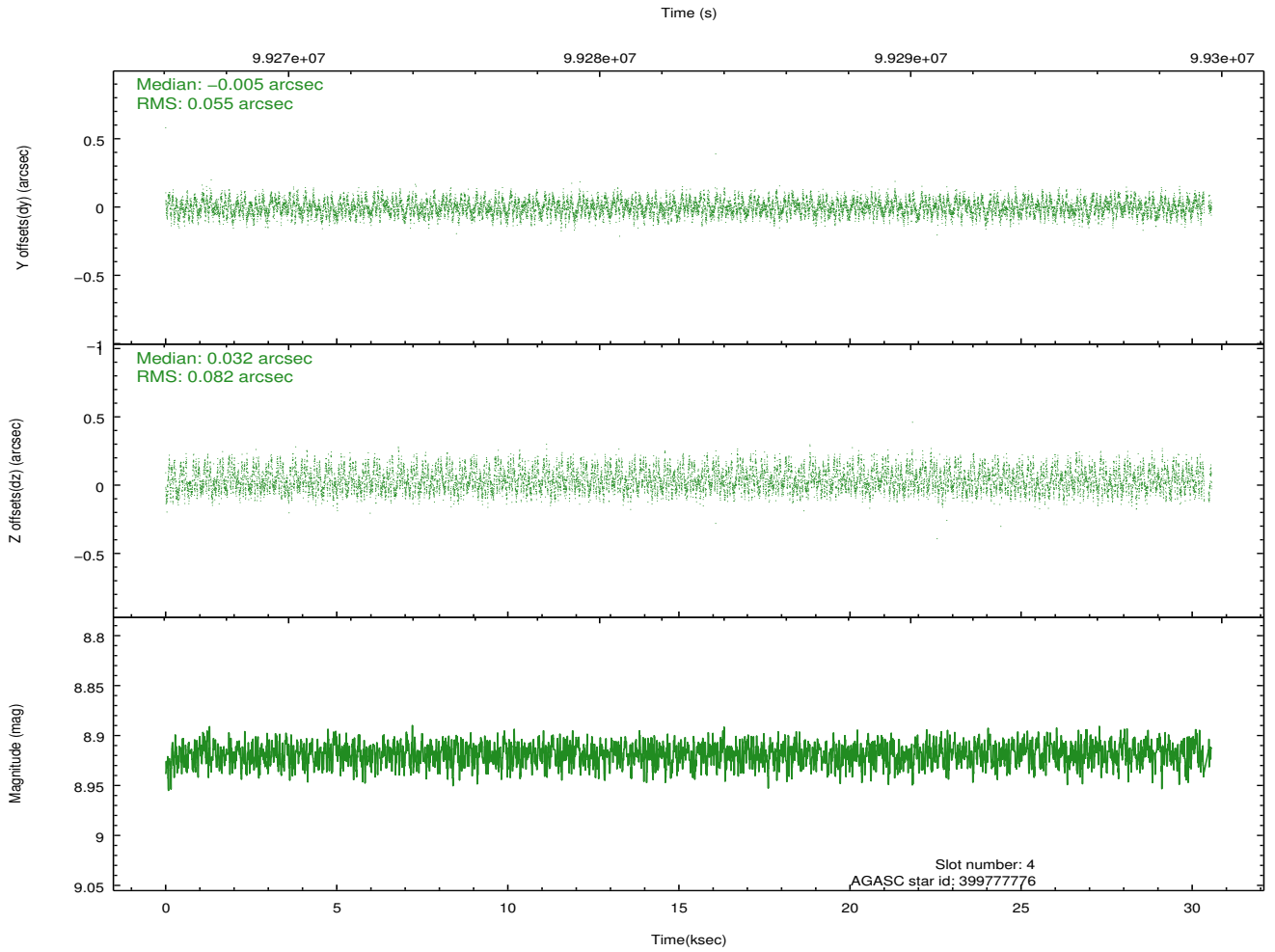
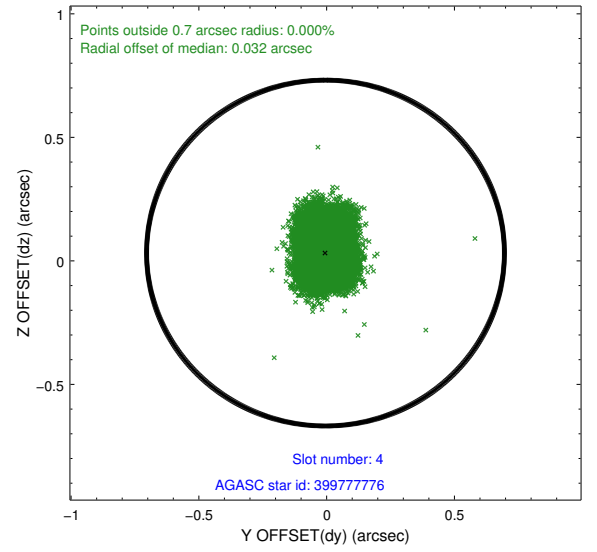
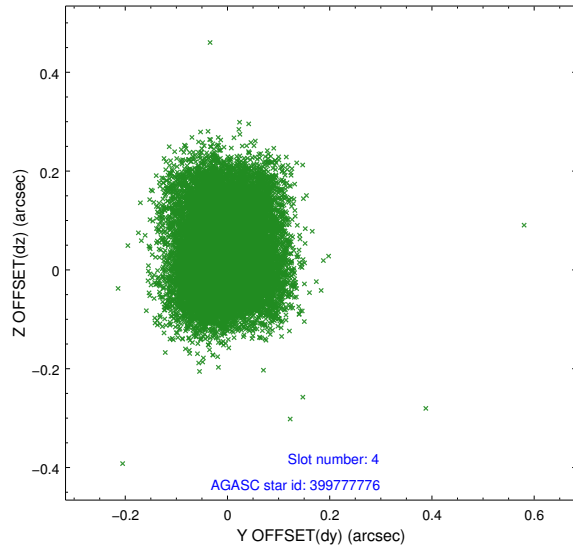
slot	status	id	mag	n_pts	med_dy	med_dz	dr1	dr2	ra	dec	mean_y	mean_z
0	FID	ACIS-S-2	7.10	7455	-0.015	-0.035	0.007	0.011	0.000000	0.000000	-755.06	-1788.56
1	FID	ACIS-S-4	7.19	7455	-0.039	0.017	0.006	0.010	0.000000	0.000000	2158.18	119.85
2	FID	ACIS-S-5	7.23	7455	0.023	0.027	0.007	0.011	0.000000	0.000000	-1807.75	113.66
3	GUIDE	399777912	8.19	14907	-0.024	0.133	0.081	0.124	224.004611	42.792463	-1119.85	-2309.99
4	GUIDE	399777776	8.92	14844	-0.005	0.032	0.106	0.165	223.999033	42.858412	-882.78	-2328.89
5	GUIDE	399642384	9.68	14898	0.021	-0.098	0.100	0.162	222.533684	42.728698	-770.01	1568.46
6	GUIDE	399250512	10.21	14883	0.101	-0.159	0.139	0.220	222.480665	42.463397	-1691.07	1857.63
7	GUIDE	399647344	9.54	14901	-0.094	0.091	0.118	0.181	223.296429	43.683105	2320.13	-933.26

2.4 Star Slots

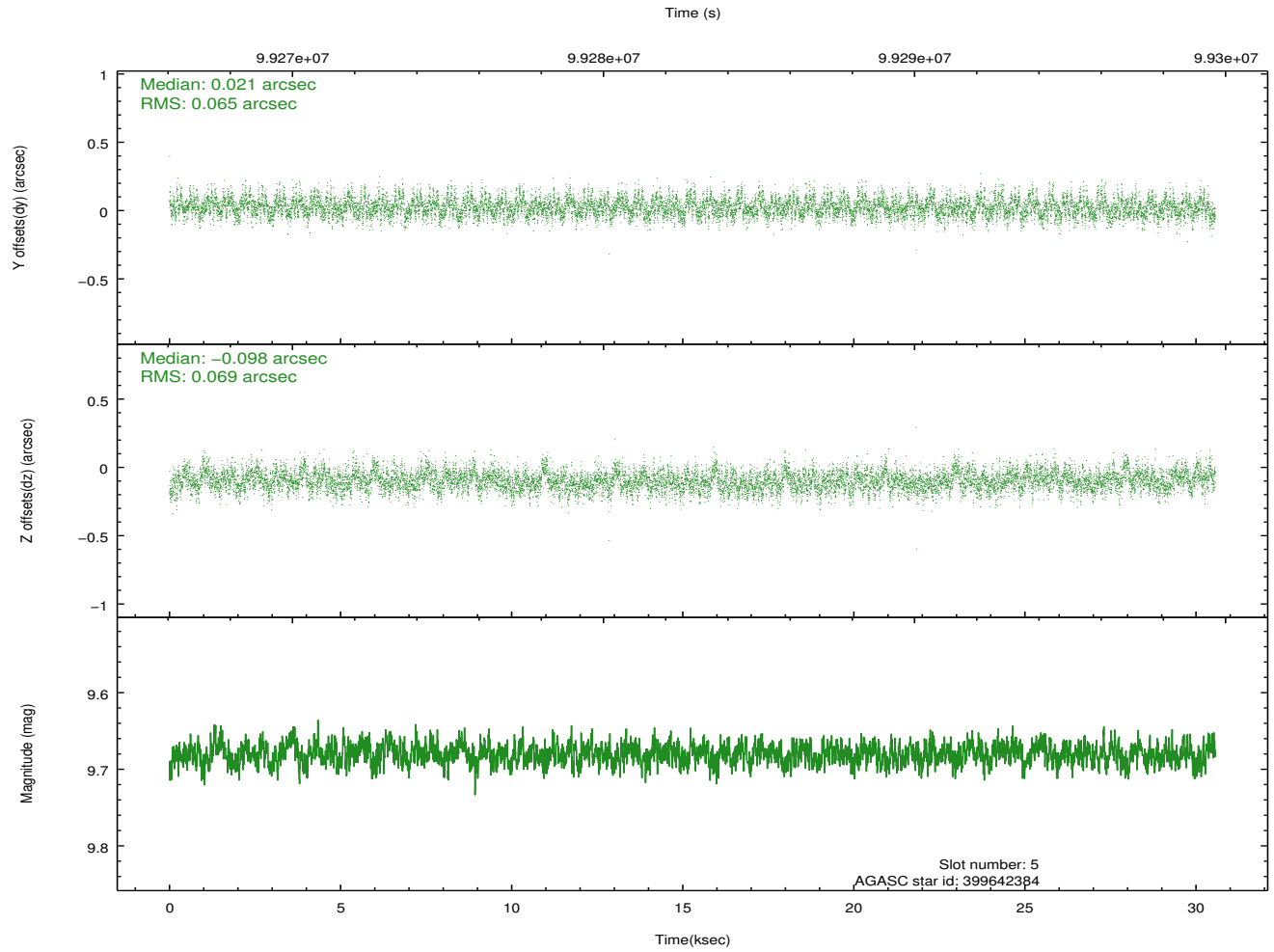
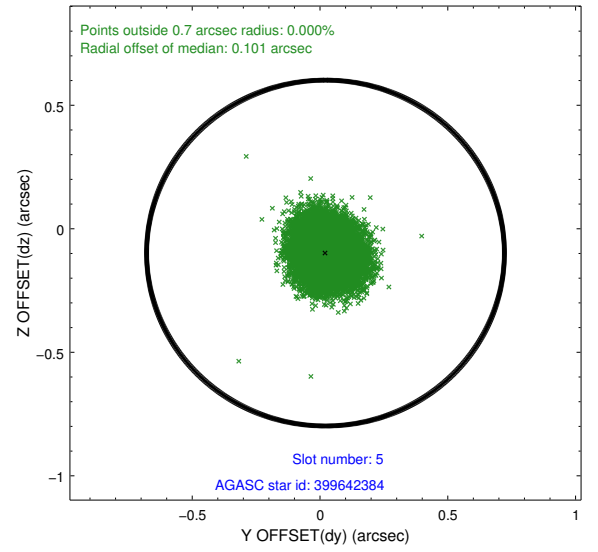
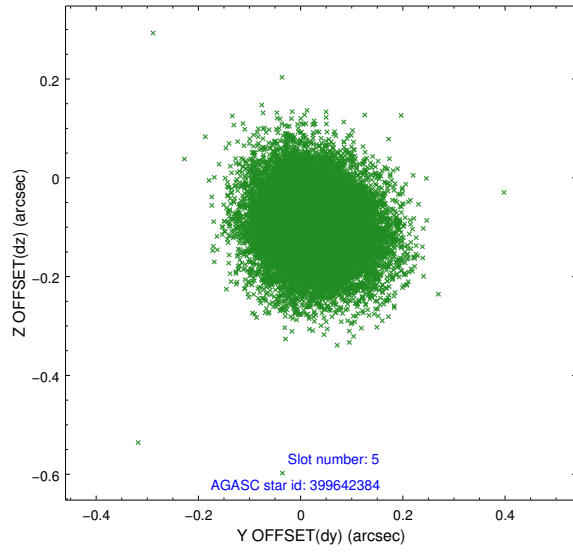
2.4.1 Slot 3



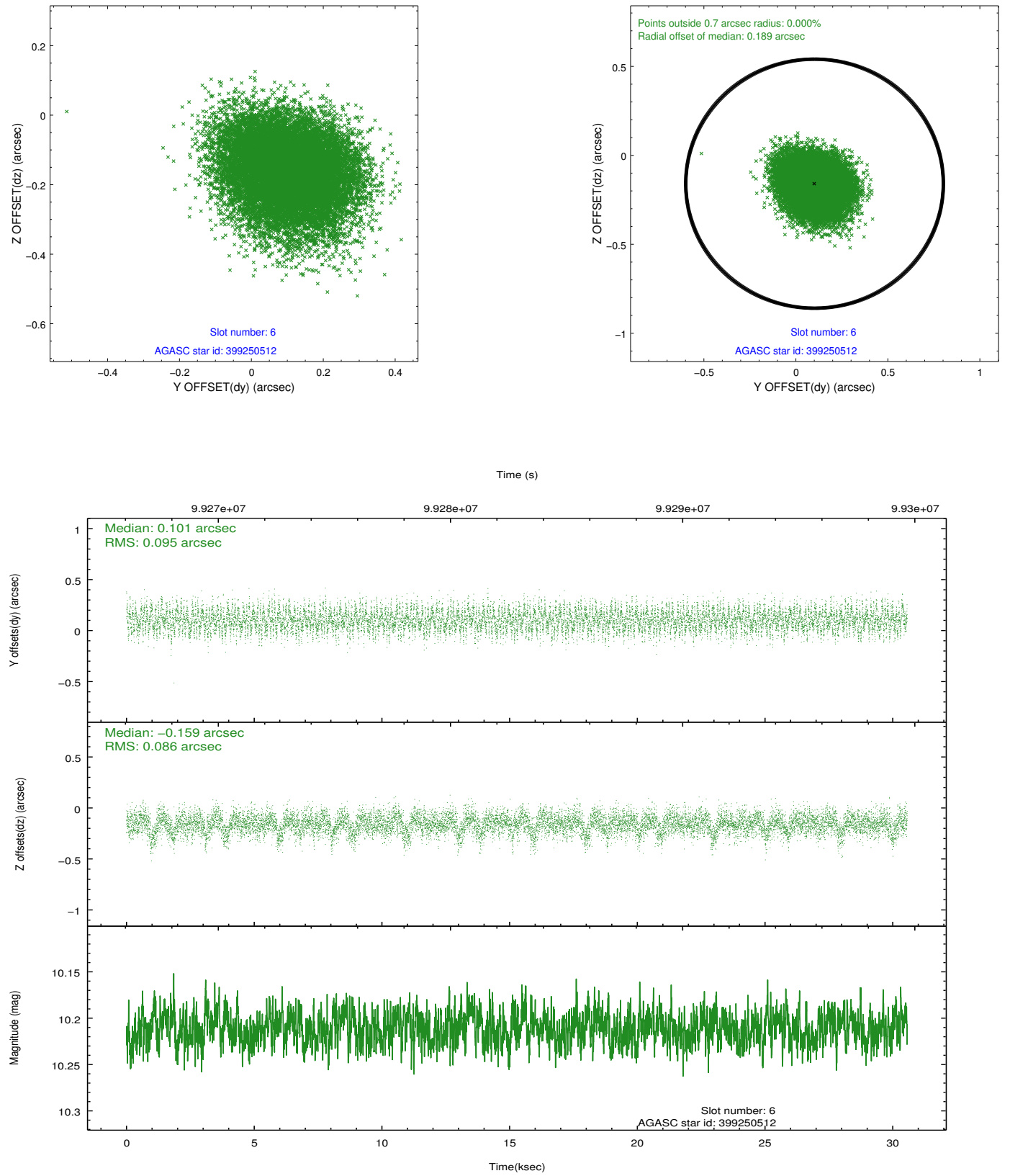
2.4.2 Slot 4



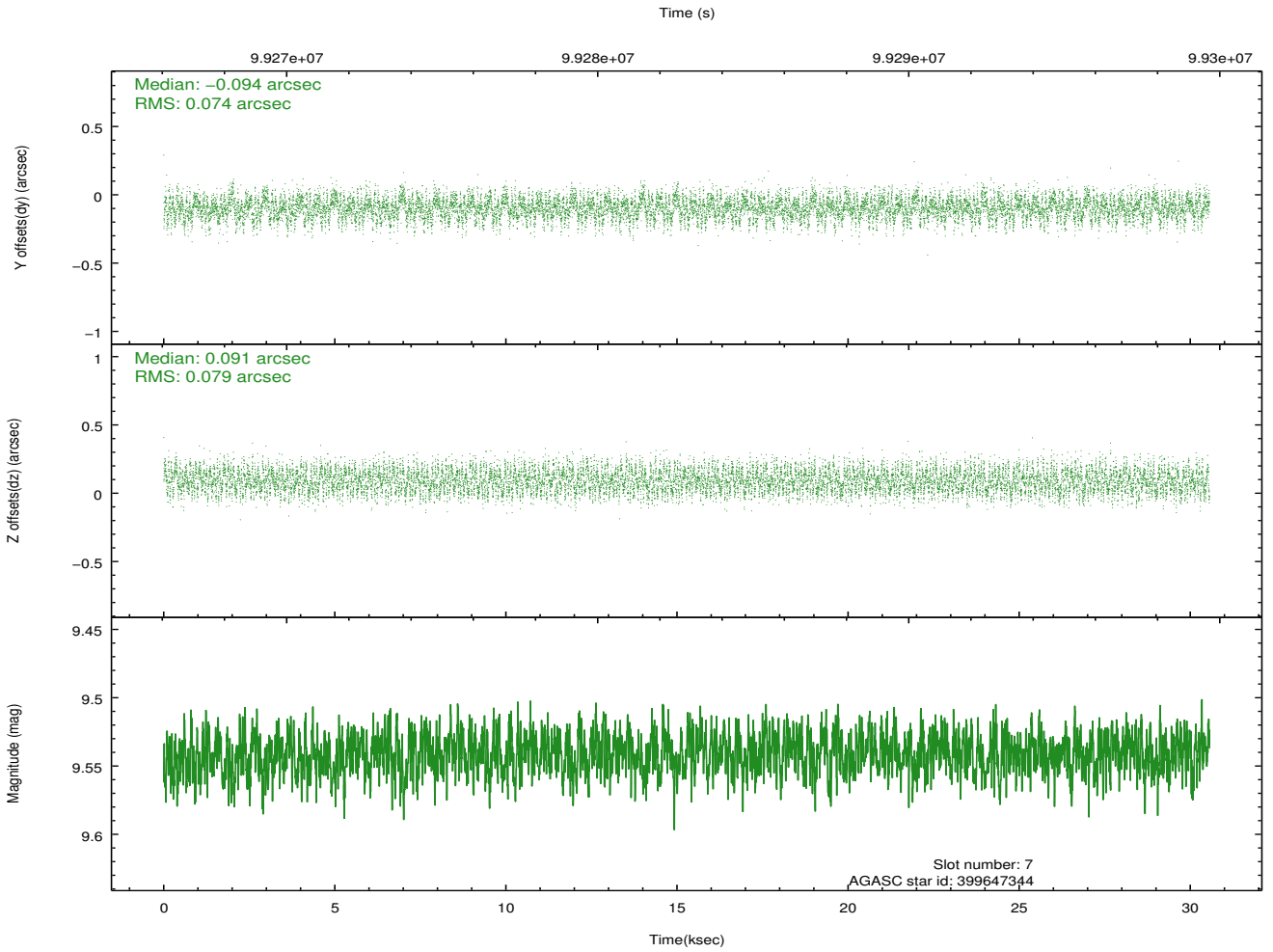
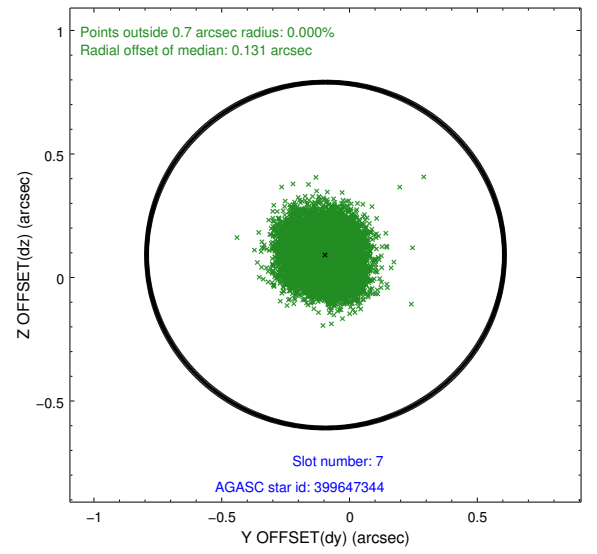
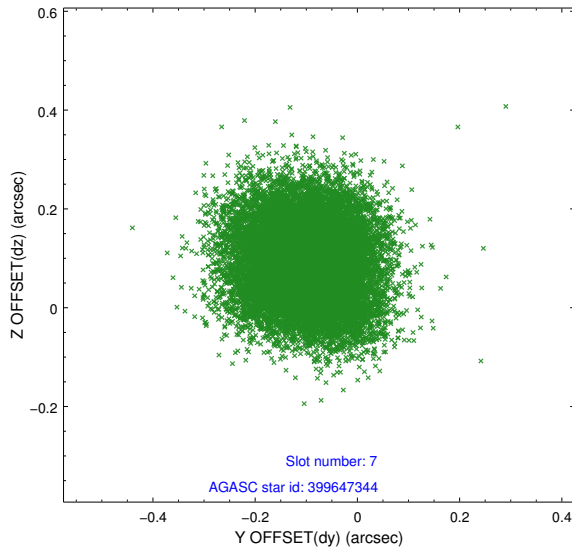
2.4.3 Slot 5



2.4.4 Slot 6

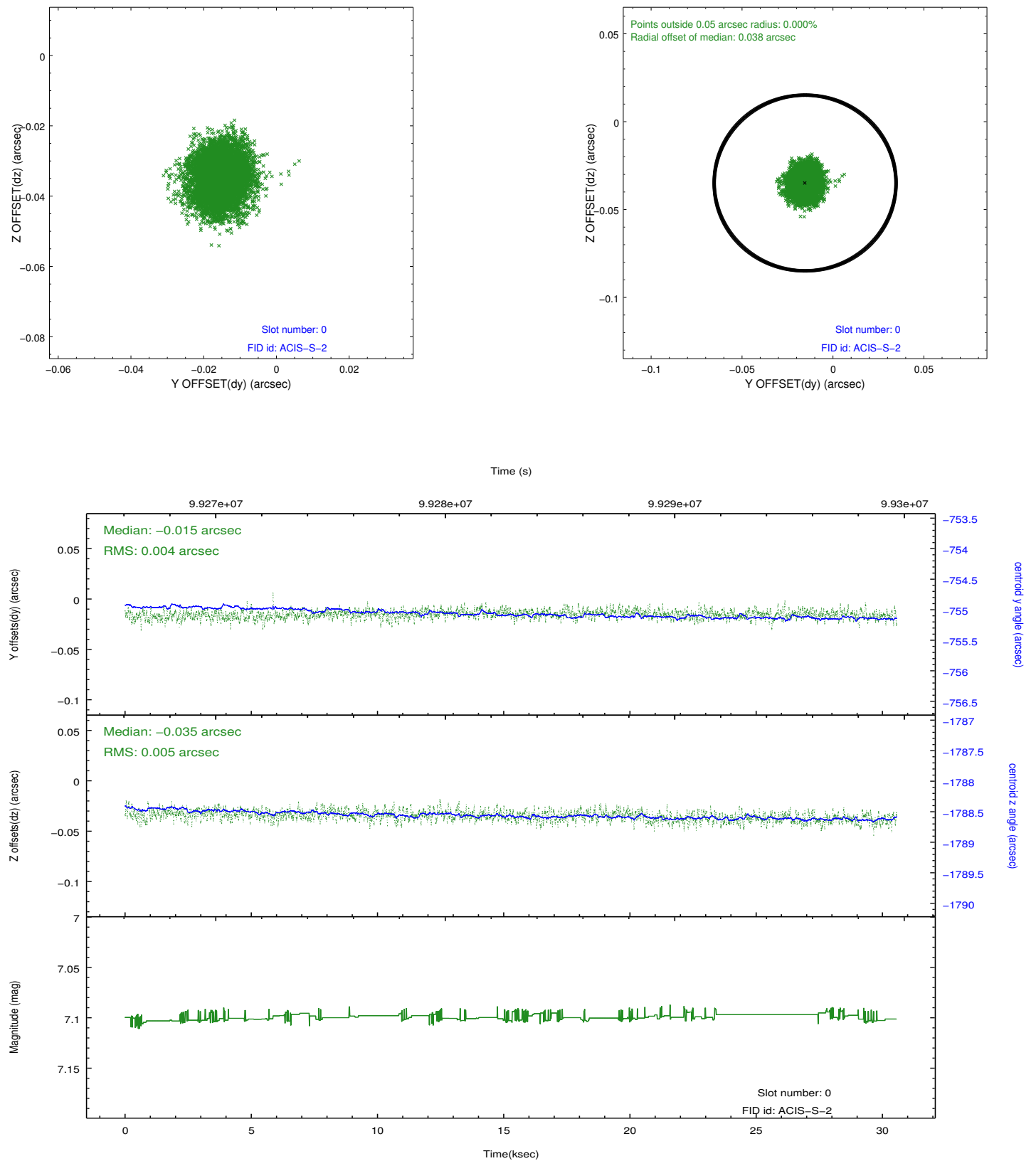


2.4.5 Slot 7

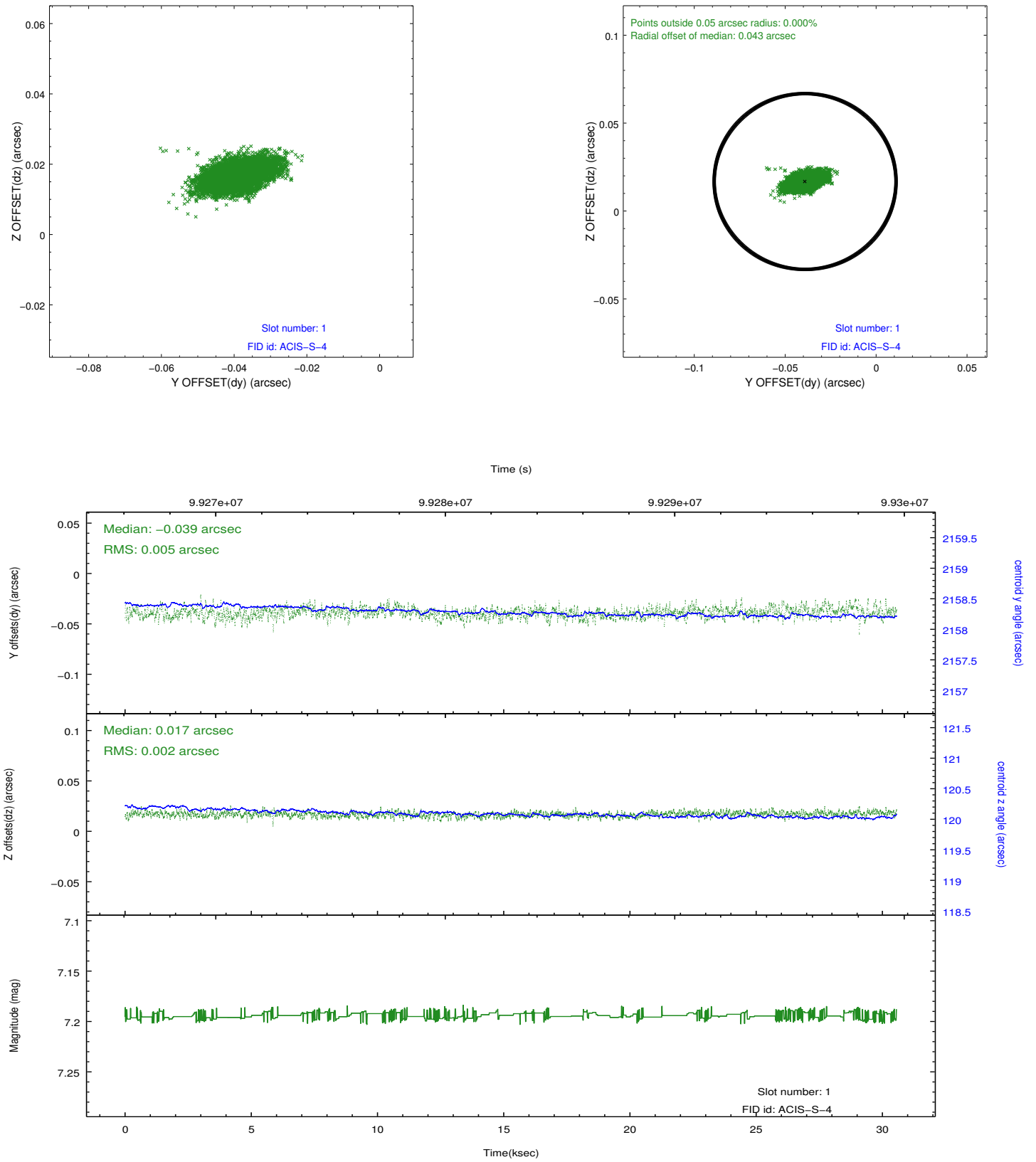


2.5 FID Slots

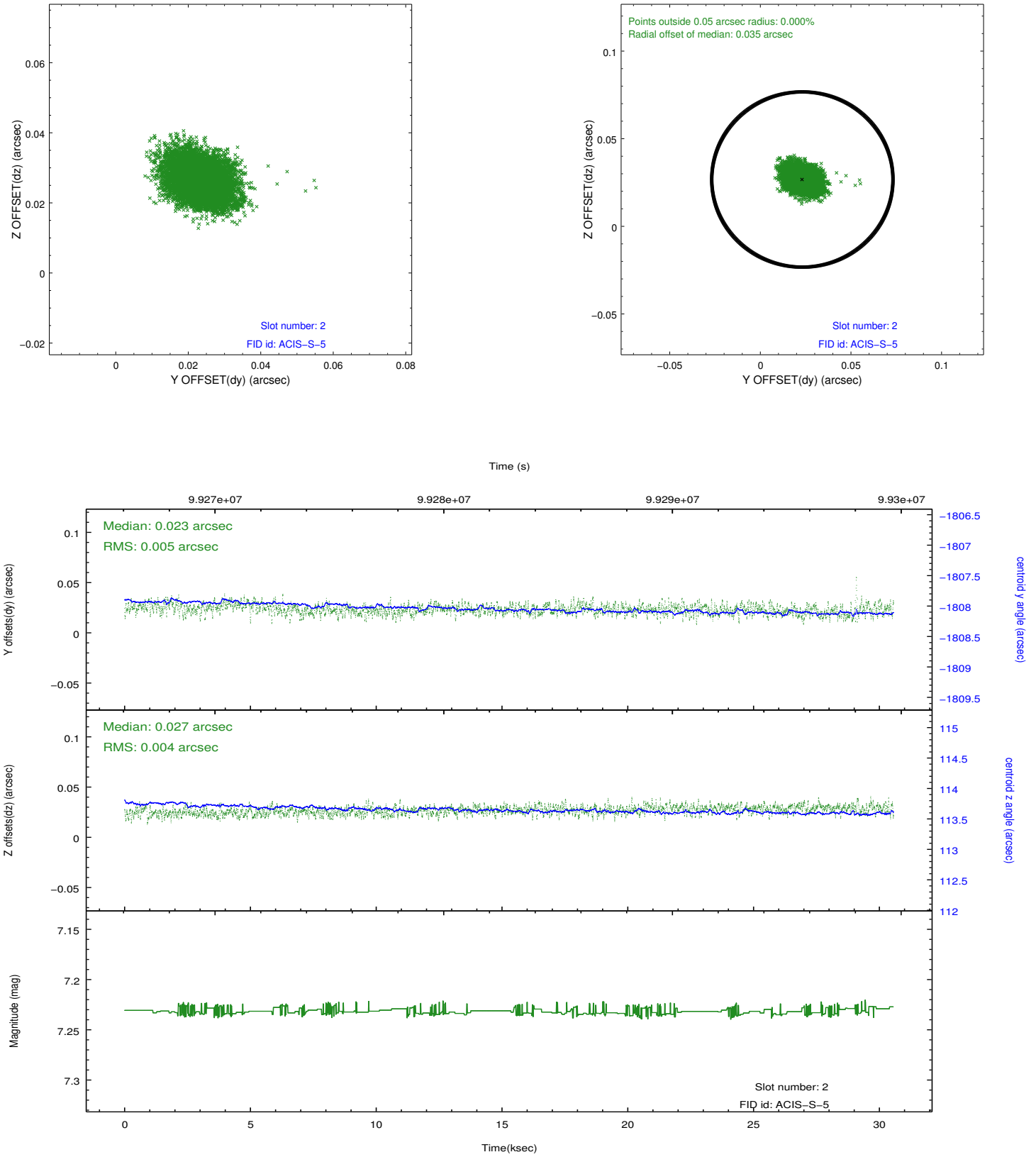
2.5.1 Slot 0



2.5.2 Slot 1



2.5.3 Slot 2



A Summary

A.1 Status

V&V Scientist	Jen Lauer
V&V Date (YYYY-MM-DD)	2012.09.17
V&V Edition	1
V&V Disposition and Status	OK
V&V Charge Time	29.923

A.2 Comments