

V&V Reference Report

L2 ASCDS Version : 8.4.5

Observation 2074 - L2 Version 3
Chandra X-Ray Center

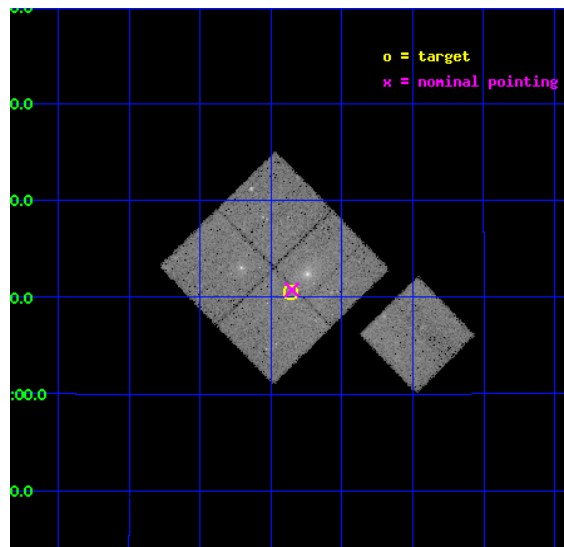
L2 Processing Date : Sep 22 2012

Contents

1	Front	2
2	OBI	3
2.1	OBI	3
2.1.1	Images	3
2.1.2	Bias	3
2.1.3	Parameters	4
2.1.4	Events	4
2.2	Compared Parameters	5
2.3	Aspect	6
2.4	Star Slots	9
2.4.1	Slot 3	9
2.4.2	Slot 4	10
2.4.3	Slot 5	11
2.4.4	Slot 6	12
2.4.5	Slot 7	13
2.5	FID Slots	14
2.5.1	Slot 0	14
2.5.2	Slot 1	15
2.5.3	Slot 2	16
A	Summary	17
A.1	Status	17
A.2	Comments	17

1 Front

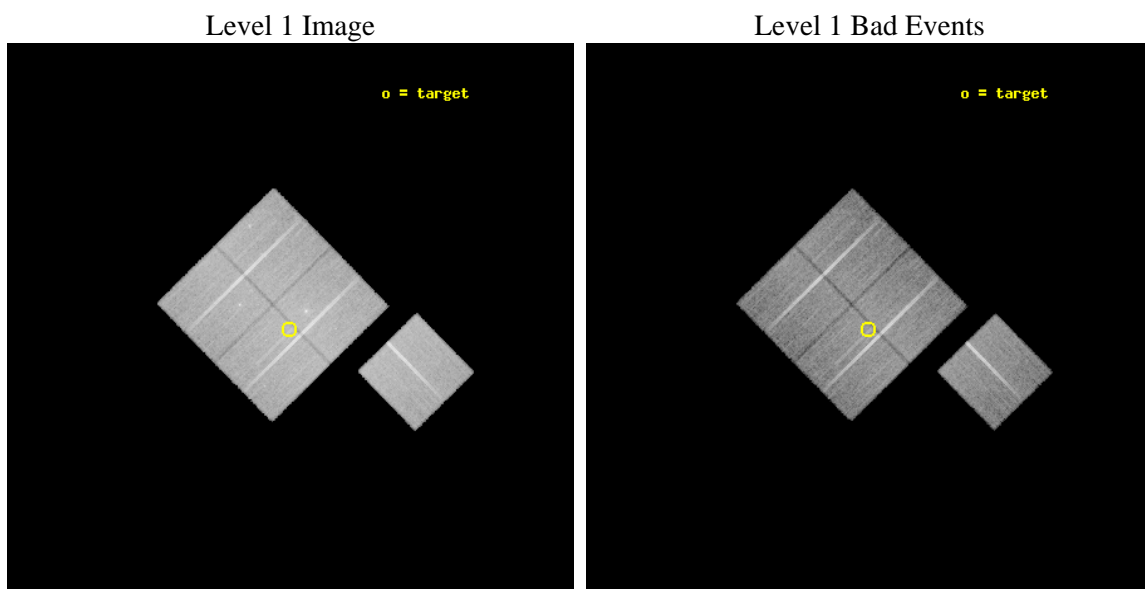
seq_num	600208	Sequence number
obs_id	2074	Observation id
title	IN SEARCH OF ``NORMAL" ELLIPTICAL GALAXIES	Proposal title
observer	Dr. william forman	Principal investigator
object	NGC7619/NGC7626	Source name
dtcycle	0	
cycle	P	events from which exps? Prim/Second/Both
ra_targ	350.09	Observer's specified target RA [deg]
dec_targ	8.175	Observer's specified target Dec [deg]
ra_nom	350.08817682543	Nominal RA [deg]
dec_nom	8.1793729576306	Nominal Dec [deg]
roll_nom	135.59625049126	Nominal Roll [deg]
revision	3	Processing version of data
ontime	27092.964698389	Sum of GTIs [s]
livetime	26738.975169054	Livetime [s]
ontime0	27092.841488734	Sum of GTIs [s]
ontime1	27096.02356872	Sum of GTIs [s]
ontime2	27099.205568939	Sum of GTIs [s]
ontime3	27092.964698389	Sum of GTIs [s]
ontime6	27099.08243905	Sum of GTIs [s]
l2events	113658	Number of level 2 events



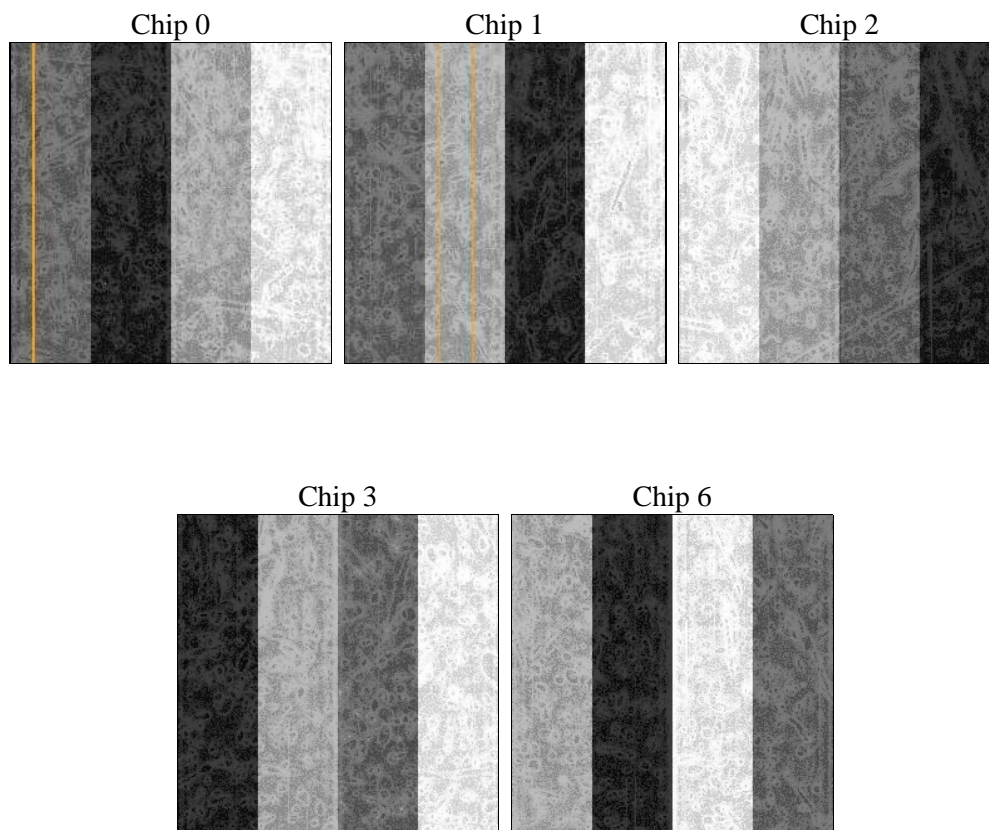
2 OBI

2.1 OBI

2.1.1 Images



2.1.2 Bias



2.1.3 Parameters

obi_num	0	Obi number	sched_exp_time	27000.000000	[s] Scheduled observation exposure time
ascdsver	8.4.5	Processing system revision	ontime	27092.964698389	Sum of GTIs [s]
caldsver	4.5.1.1	 	ontime0	27092.841488734	Sum of GTIs [s]
date	2012-09-22T08:22:05	Date and time of file creation	ontime1	27096.02356872	Sum of GTIs [s]
revision	3	Processing version of data	ontime2	27099.205568939	Sum of GTIs [s]
			ontime3	27092.964698389	Sum of GTIs [s]
			ontime6	27099.08243905	Sum of GTIs [s]
			l1events	938456	Number of level 1 events

2.1.4 Events

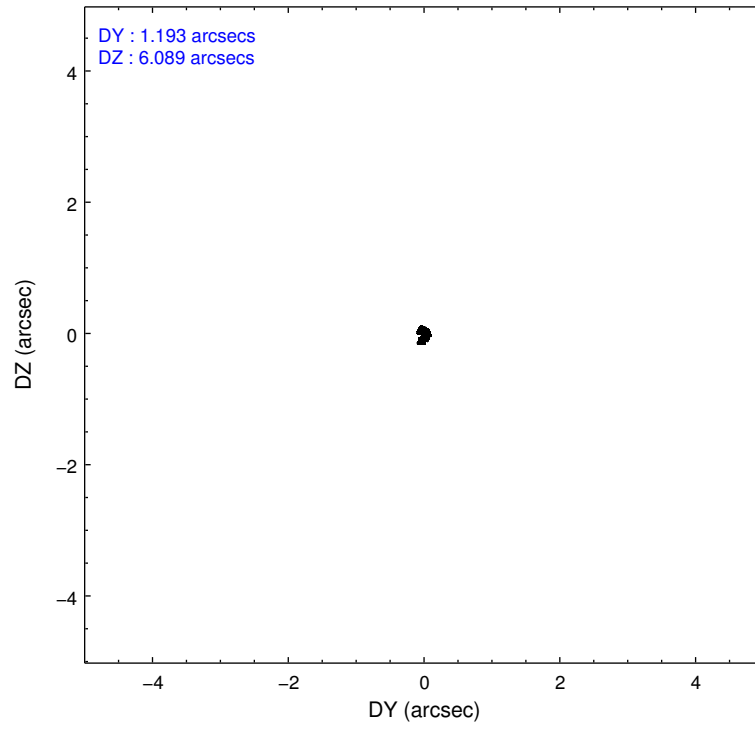
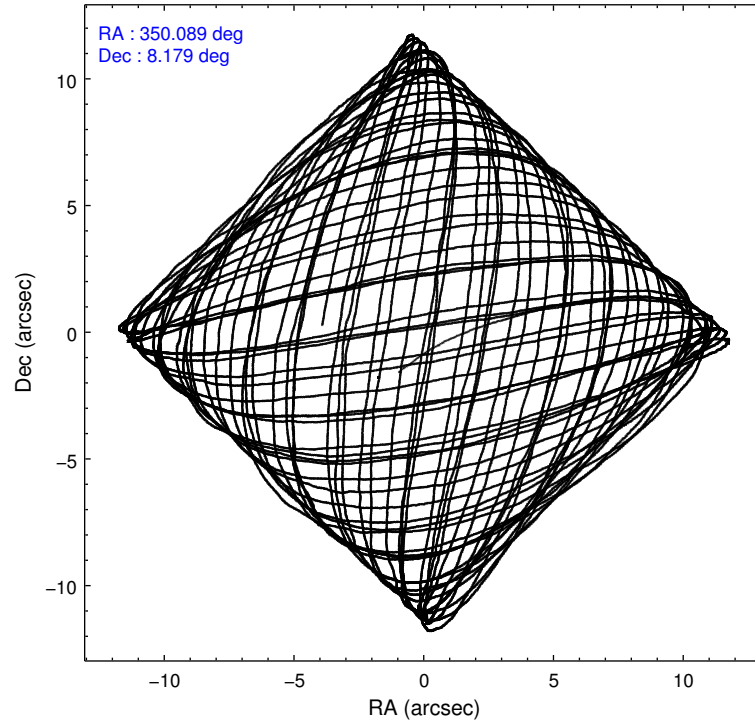
	ccd 0	ccd 1	ccd 2	ccd 3	ccd 6
level 1 events	176142	179109	198789	194104	190312
rejected events	150926	152414	167981	169282	166493
rejected %	85%	85%	84%	87%	87%

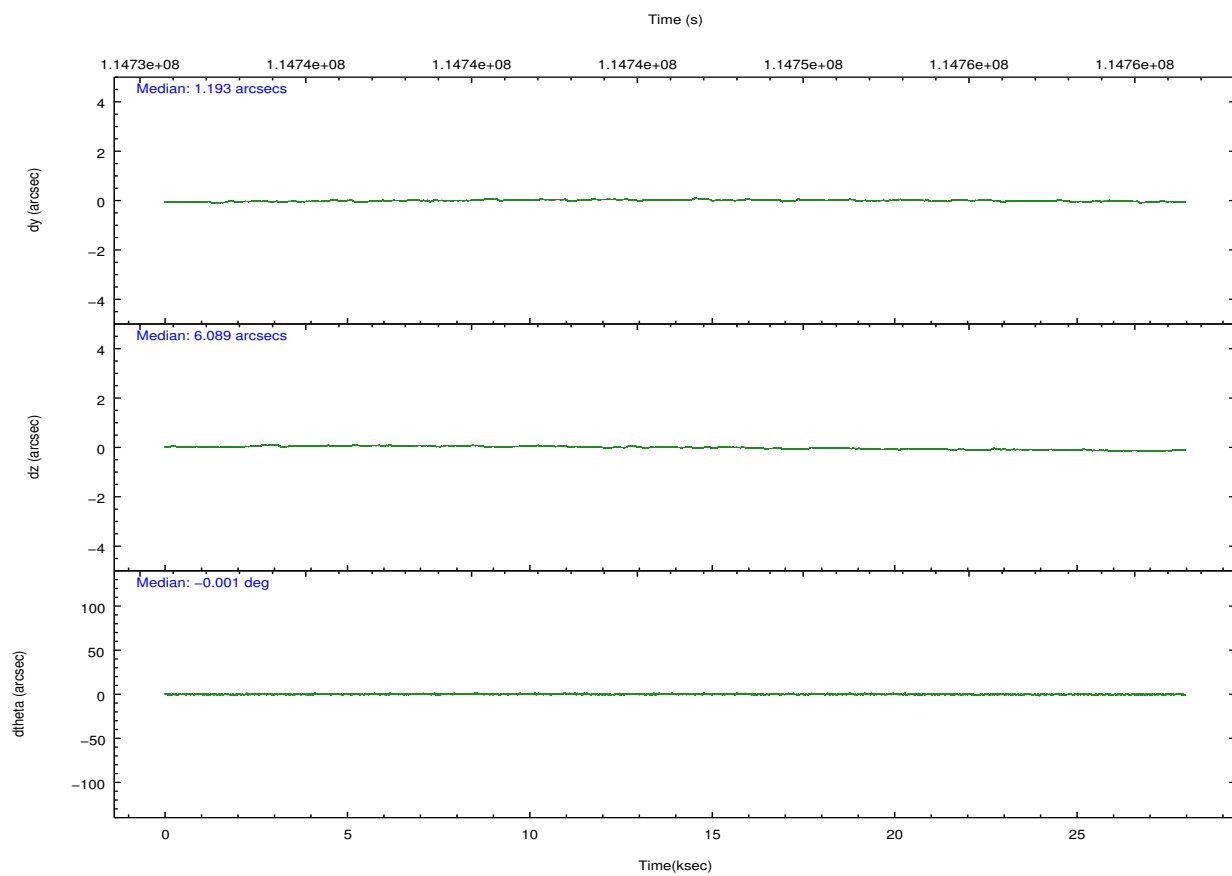
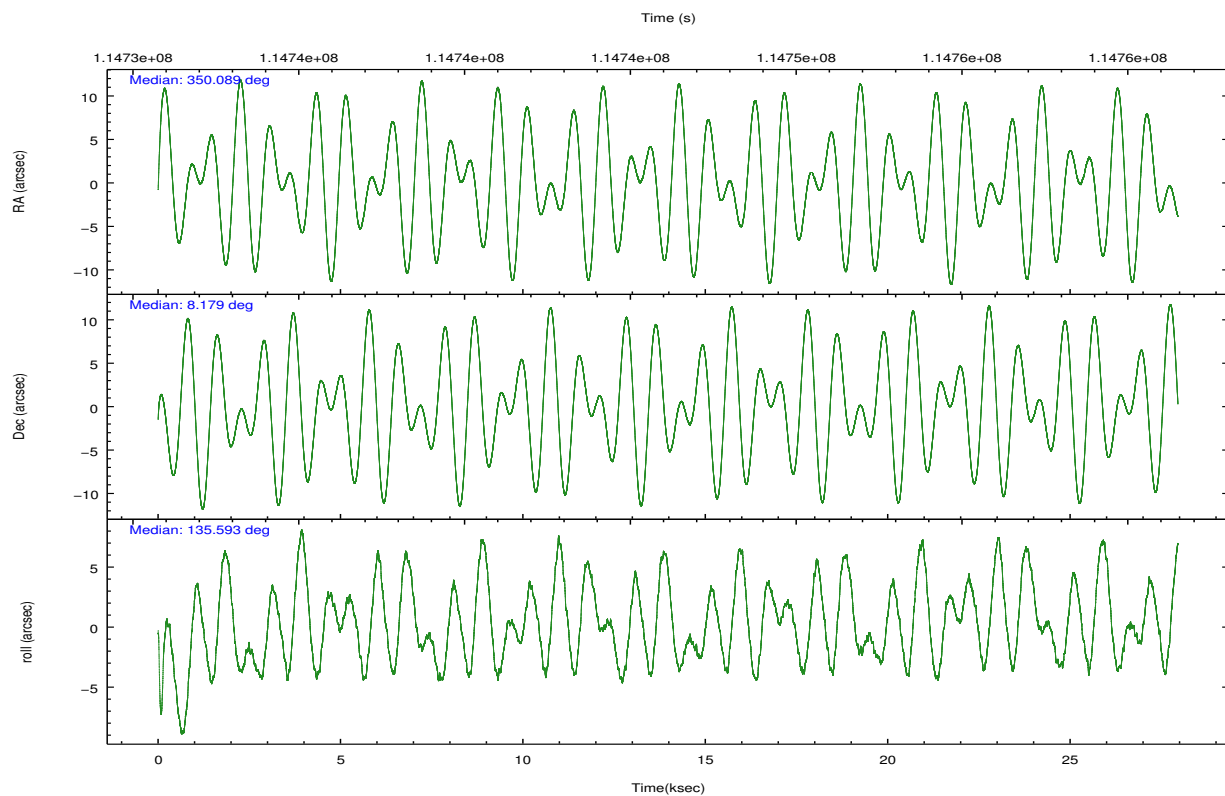
	ccd 0	ccd 1	ccd 2	ccd 3	ccd 6
grade 0 events	11755	12316	16896	11886	10517
	6%	6%	8%	6%	5%
grade 1 events	76	77	114	120	95
	0%	0%	0%	0%	0%
grade 2 events	5056	5090	5501	4764	4639
	2%	2%	2%	2%	2%
grade 3 events	2229	2366	2200	2162	2249
	1%	1%	1%	1%	1%
grade 4 events	2156	2453	2236	2128	2170
	1%	1%	1%	1%	1%
grade 5 events	6529	6966	6230	6995	7430
	3%	3%	3%	3%	3%
grade 6 events	4025	4477	3978	3884	4247
	2%	2%	2%	2%	2%
grade 7 events	144316	145364	161634	162165	158965
	81%	81%	81%	83%	83%

2.2 Compared Parameters

Parameter	Planned	Actual	Parameter	Planned	Actual
Instrument	ACIS	ACIS	Obspar format version number	7	7
Detector	ACIS-01236	ACIS-01236	Obspar file type	PREDICTED	ACTUAL
Grating	NONE	NONE	Obspar update status	NONE	UPDATED
Data mode	VFAINT	VFAINT	Number of optional ACIS chips dropped	0	0
Observation mode	POINTING	POINTING	On-chip summing requested	N	N
[deg] Pointing RA	350.115024	350.0881768254283	Subarray requested	NONE	NONE
[deg] Pointing Dec	8.172574	8.179372957630644	Alternating exposures requested	N	N
[deg] Pointing Roll	135.383750	135.596250491255	[s] Primary exposure time	0.000000	3.1
[mm] SIM focus pos	-0.782348	-0.7809083437167272			
[mm] SIM defocus	0	0.001439871863259334			
[mm] SIM translation stage pos	-226.592463	-226.5875806612856			
[mm] SIM translation stage offset	-7	-7.004872341644045			
[s] Observation start time (MET)	114733116.184000	114731774.41683			
Observation start date	2001-08-20T22:17:32	2001-08-20T21:56:14			
[s] Observation end time (MET)	114760116.184000	114760741.43047			
Observation end date	2001-08-21T05:47:32	2001-08-21T05:59:01			
Read mode	TIMED	TIMED			

2.3 Aspect



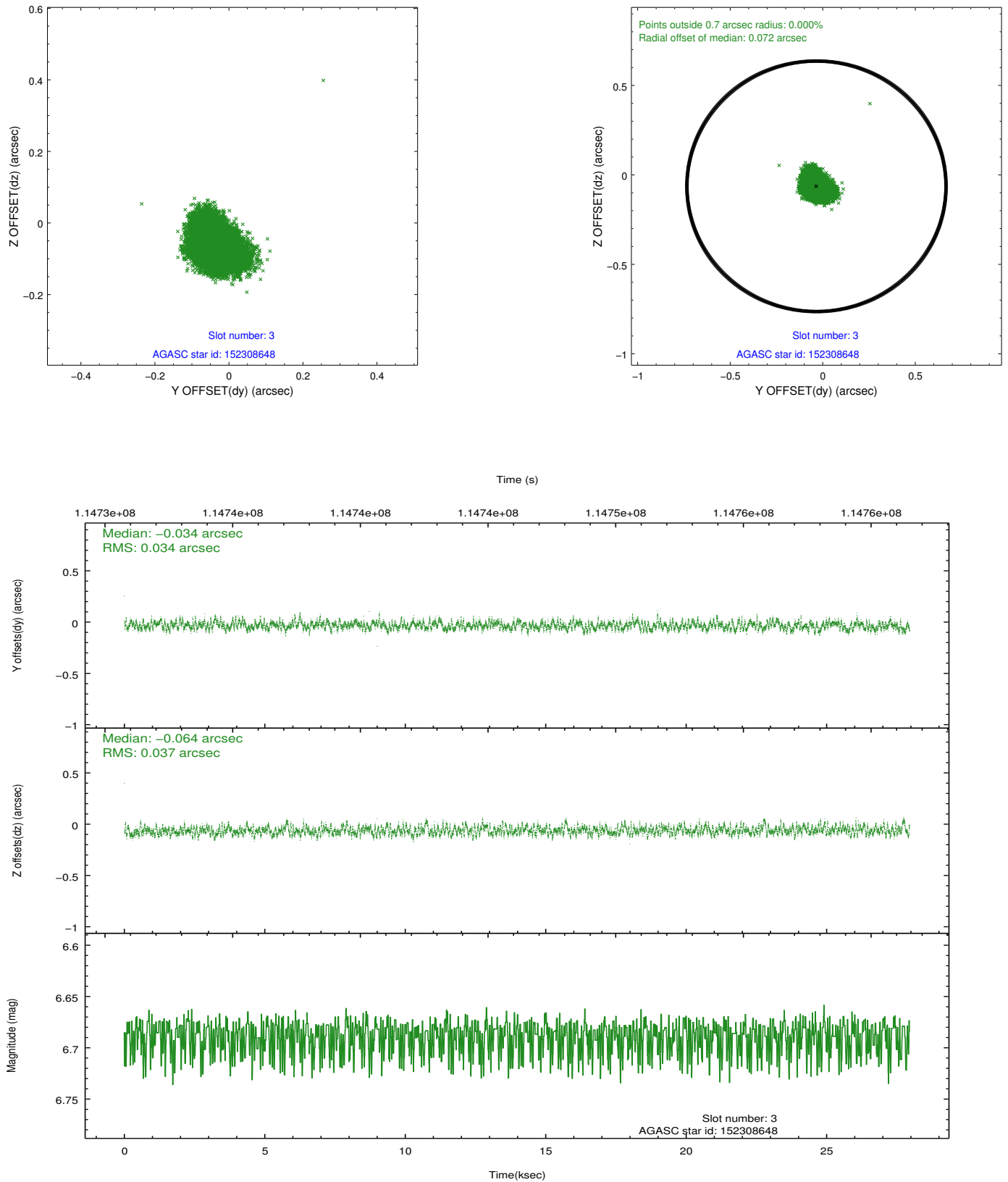


Slot Statistics

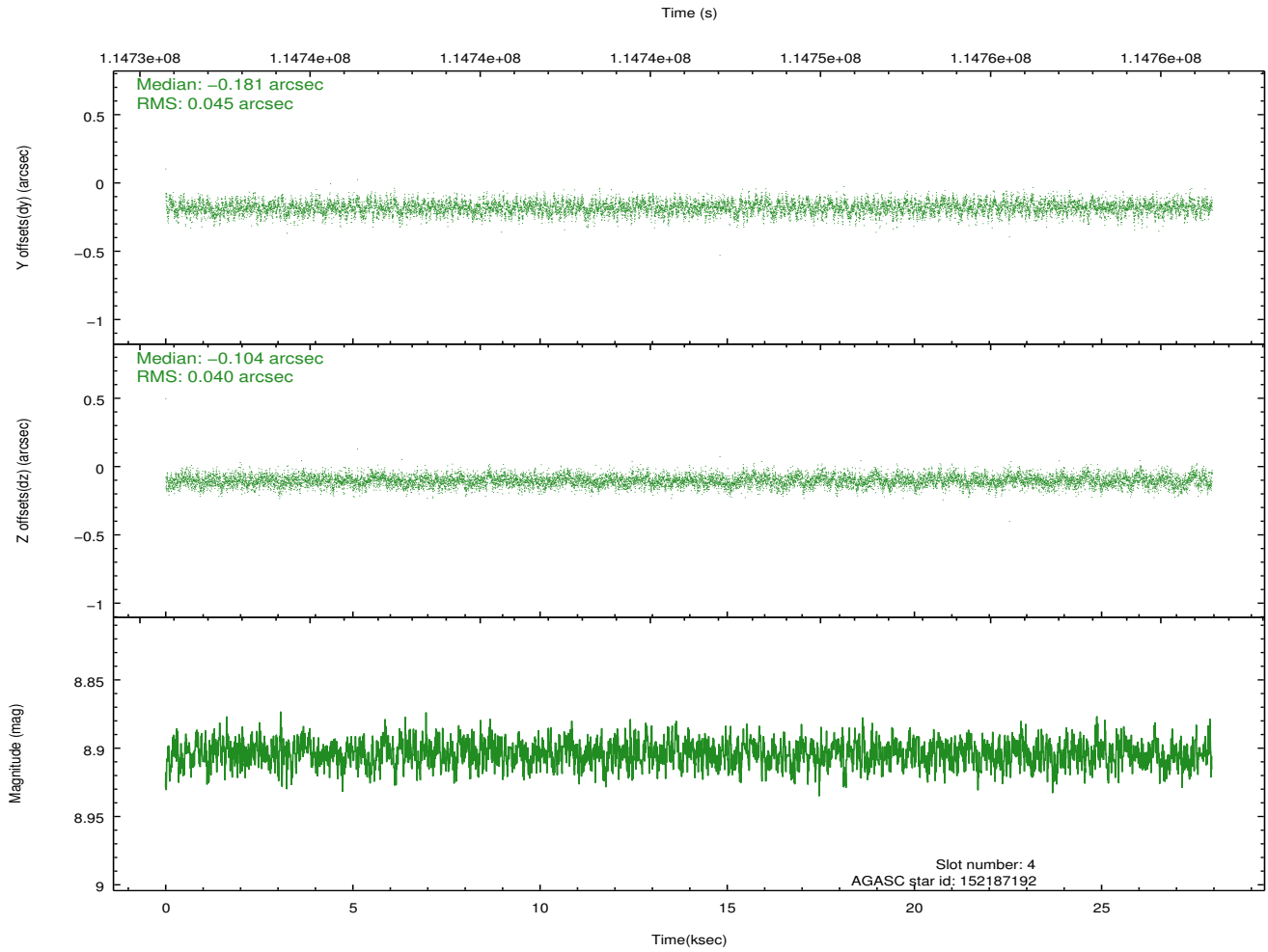
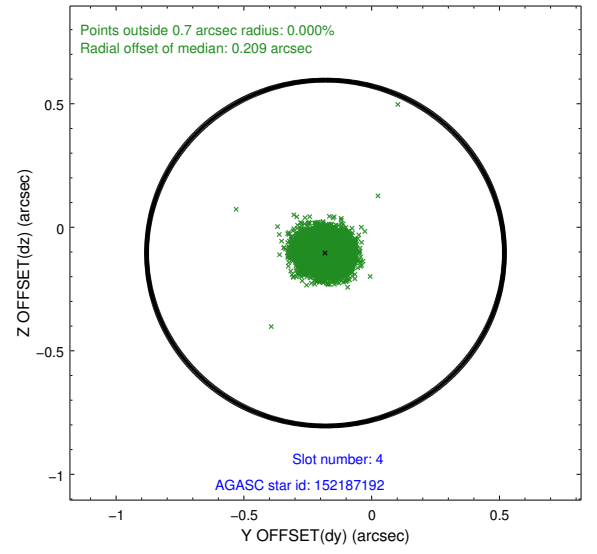
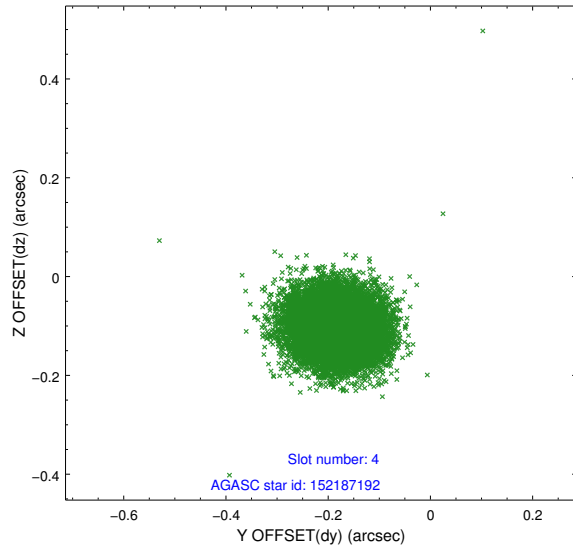
slot	status	id	mag	n_pts	med_dy	med_dz	dr1	dr2	ra	dec	mean_y	mean_z
0	FID	ACIS-I-1	7.24	6817	0.065	-0.041	0.006	0.011	0.000000	0.000000	938.57	-973.29
1	FID	ACIS-I-5	7.23	6817	-0.168	0.079	0.006	0.011	0.000000	0.000000	-1809.69	924.30
2	FID	ACIS-I-6	7.27	6817	0.012	0.033	0.007	0.011	0.000000	0.000000	404.01	1568.82
3	GUIDE	152308648	6.69	13632	-0.034	-0.064	0.054	0.086	349.950276	7.982087	-62.09	901.11
4	GUIDE	152187192	8.90	13631	-0.181	-0.104	0.064	0.103	349.378103	8.213055	1974.34	1739.39
5	GUIDE	152310496	8.99	13627	0.018	0.078	0.072	0.114	350.630549	8.225229	-1171.81	-1425.19
6	GUIDE	152320064	9.29	13629	0.131	0.103	0.081	0.129	350.730376	8.067746	-1823.82	-1272.86
7	GUIDE	152186792	9.31	13605	0.066	-0.015	0.082	0.133	349.781832	8.237480	1010.87	667.67

2.4 Star Slots

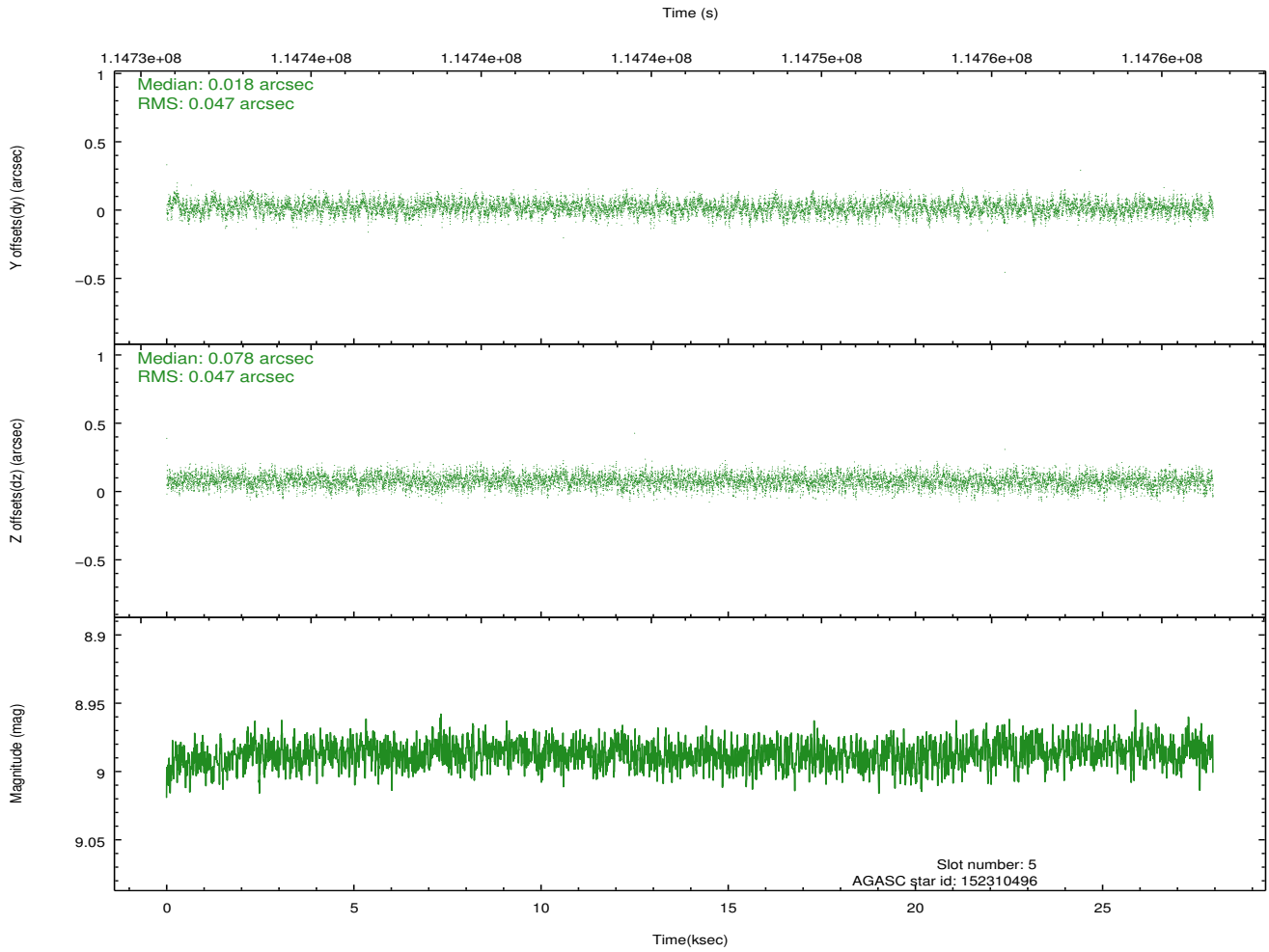
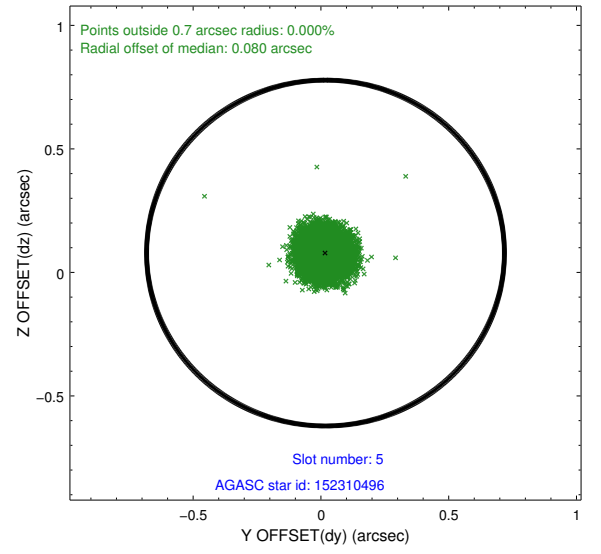
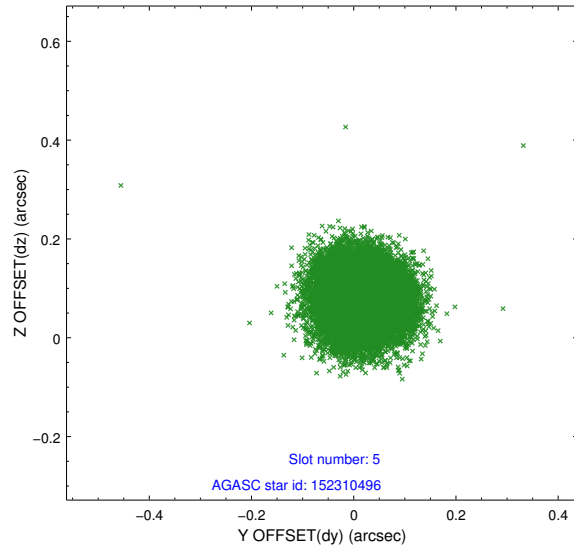
2.4.1 Slot 3



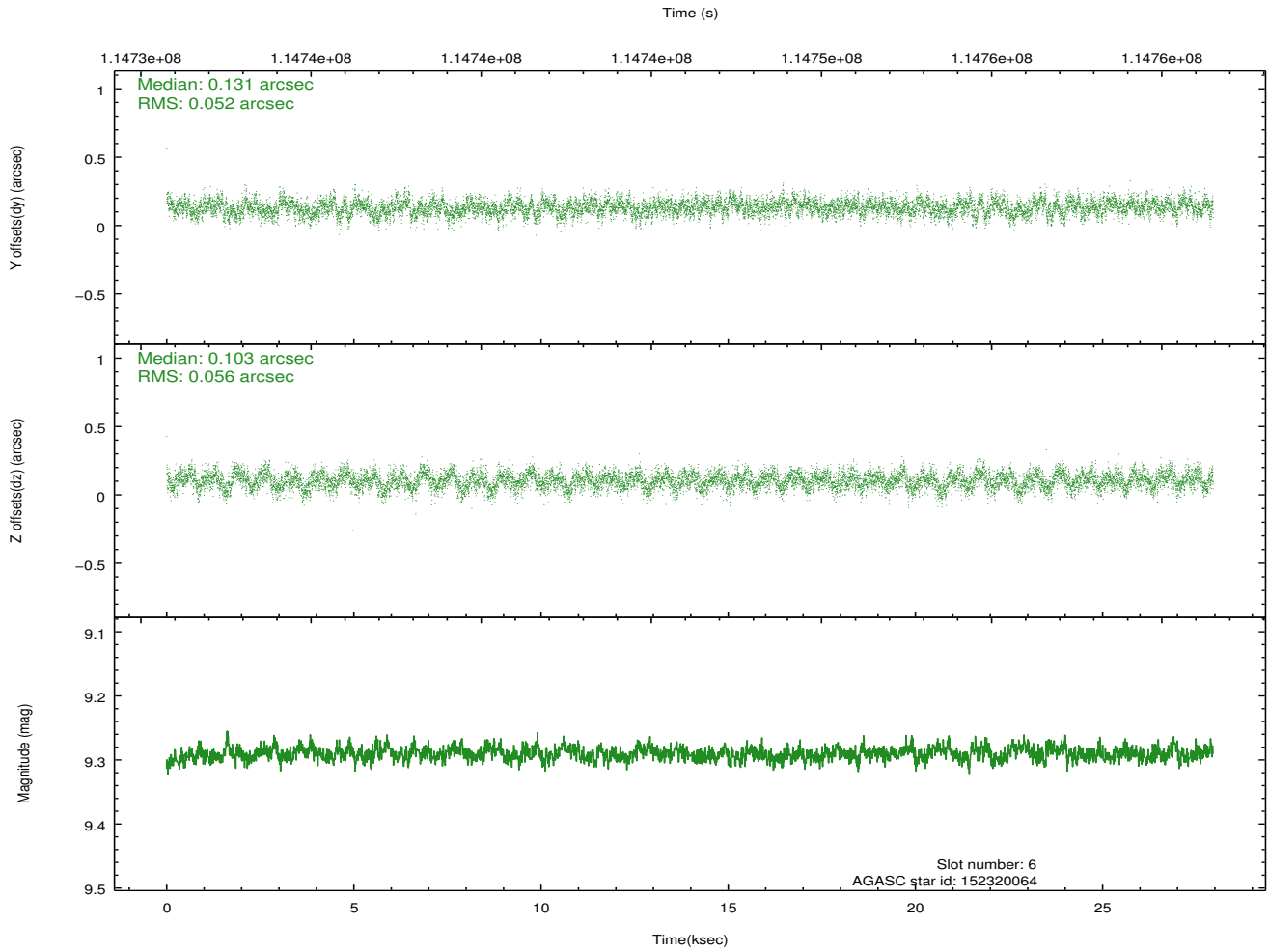
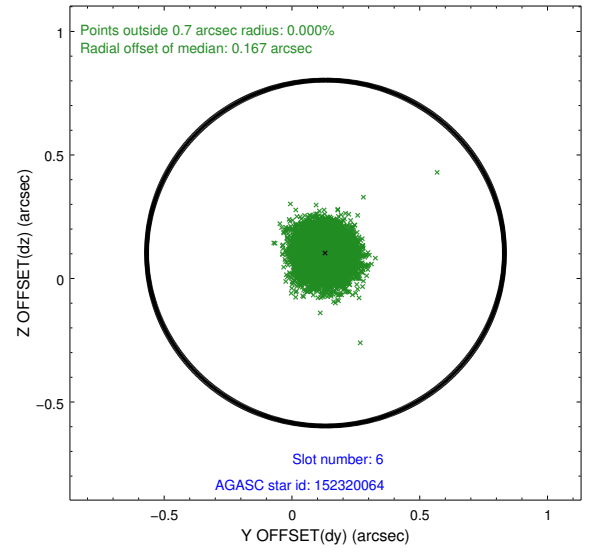
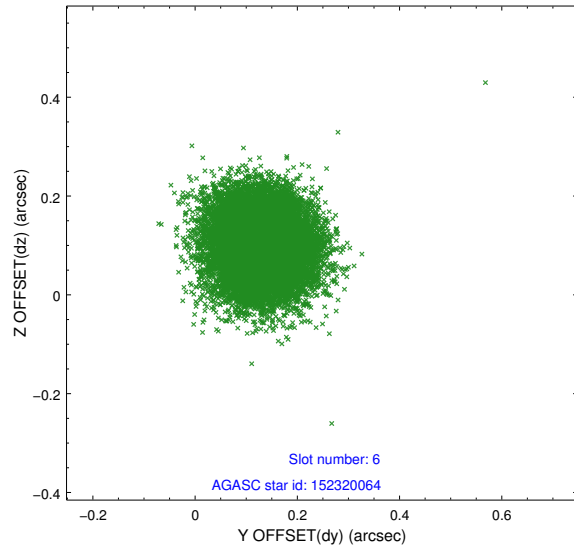
2.4.2 Slot 4



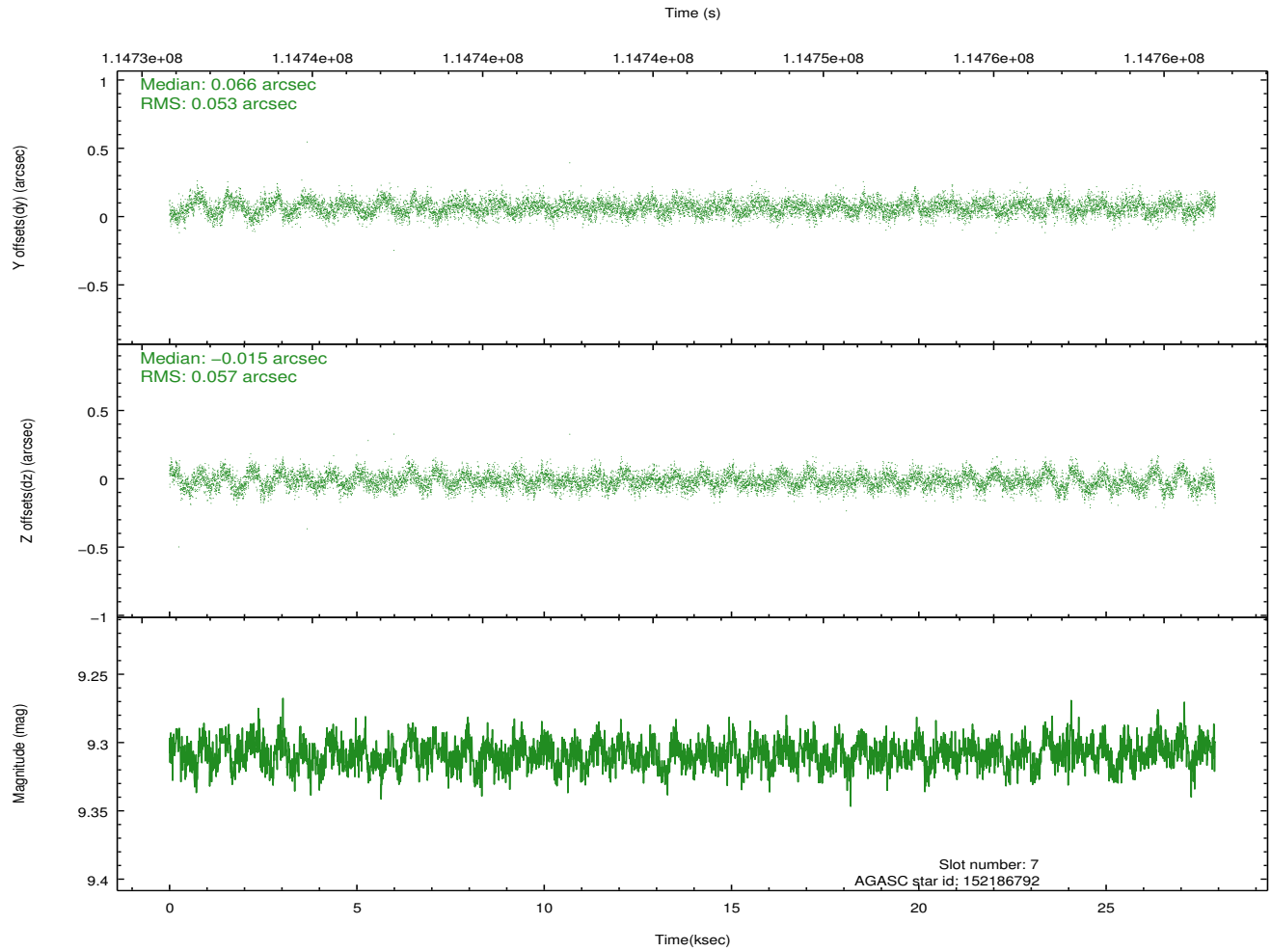
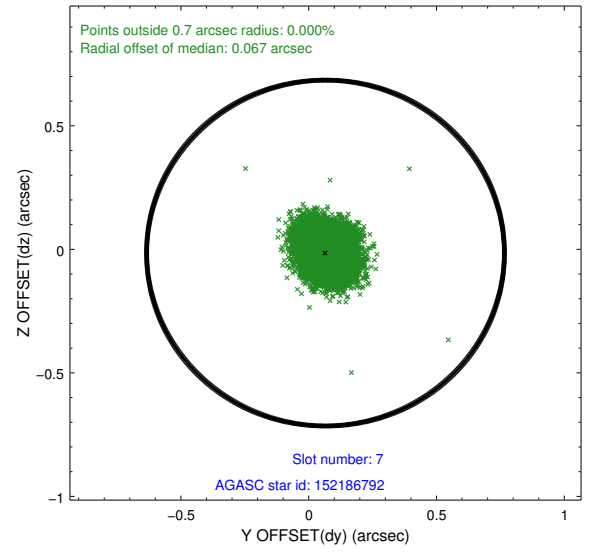
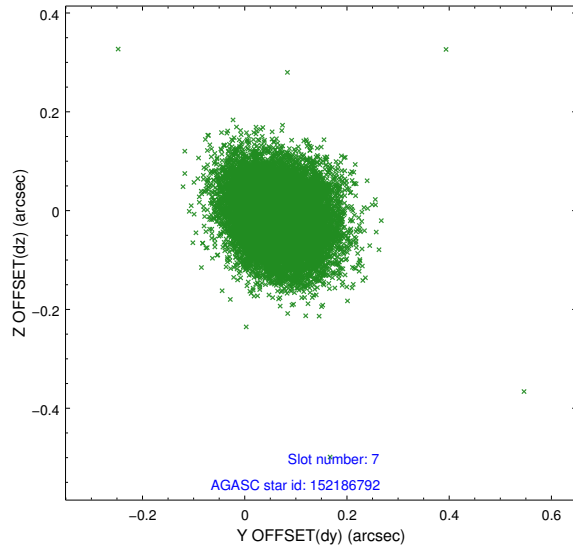
2.4.3 Slot 5



2.4.4 Slot 6

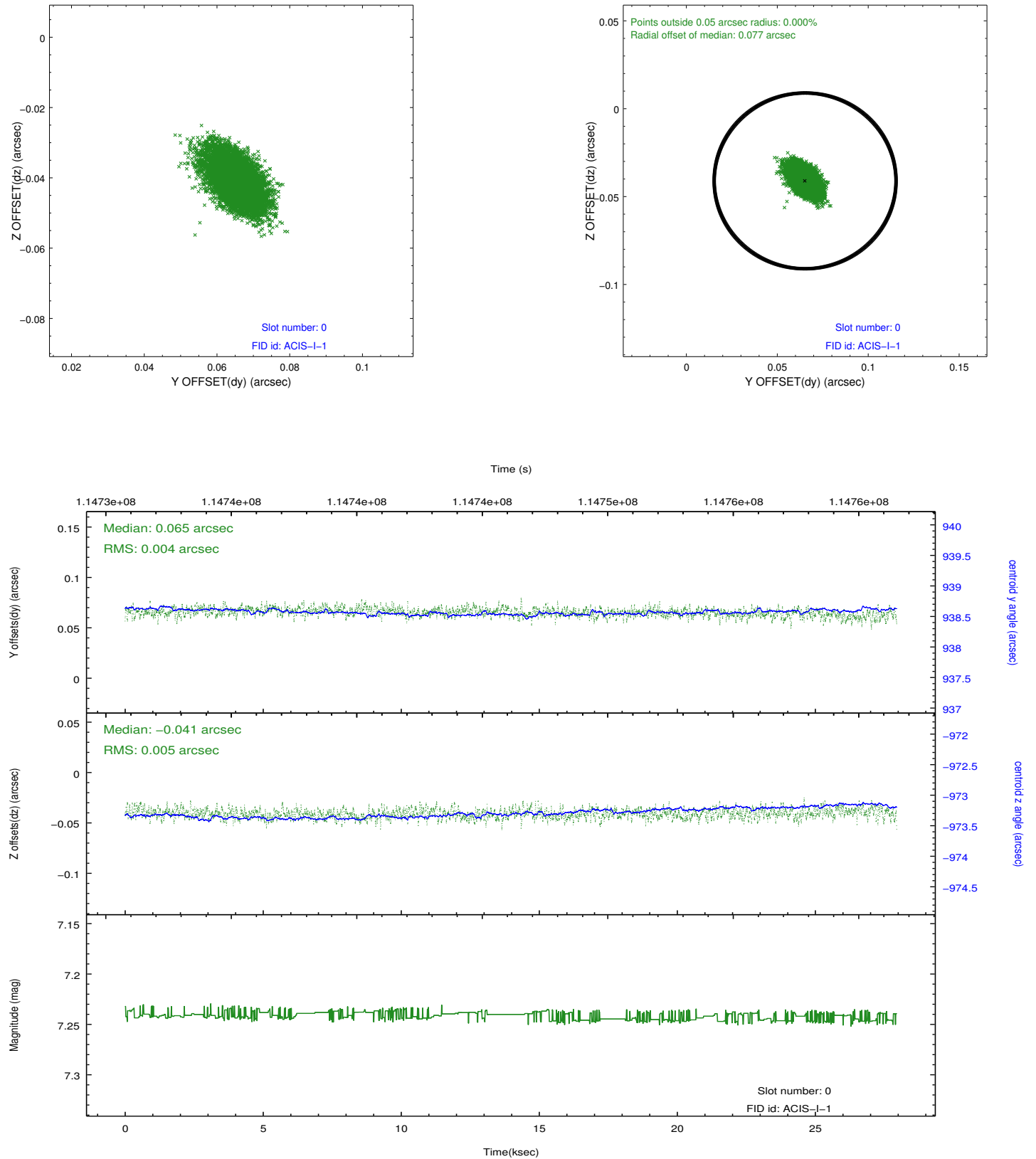


2.4.5 Slot 7

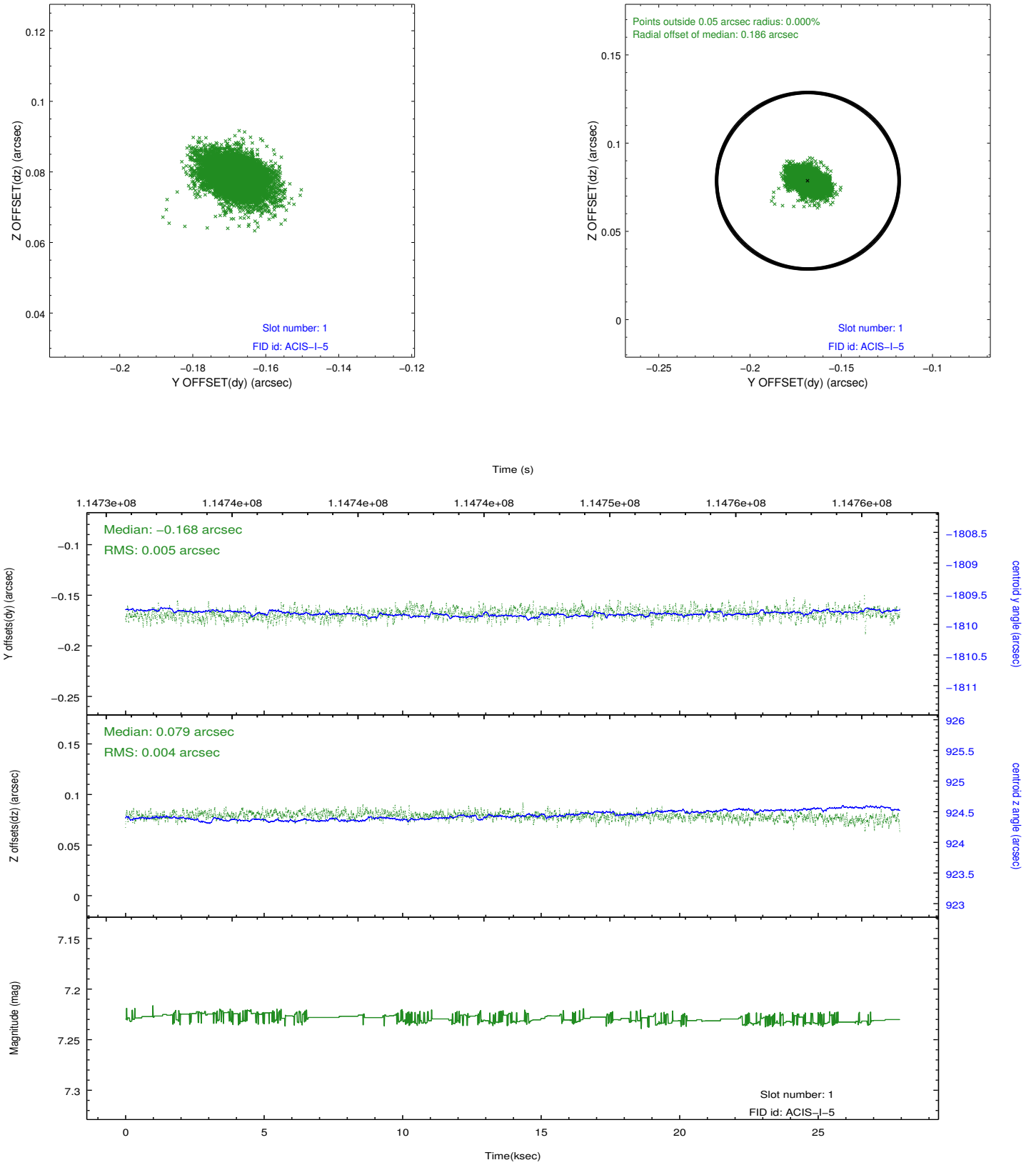


2.5 FID Slots

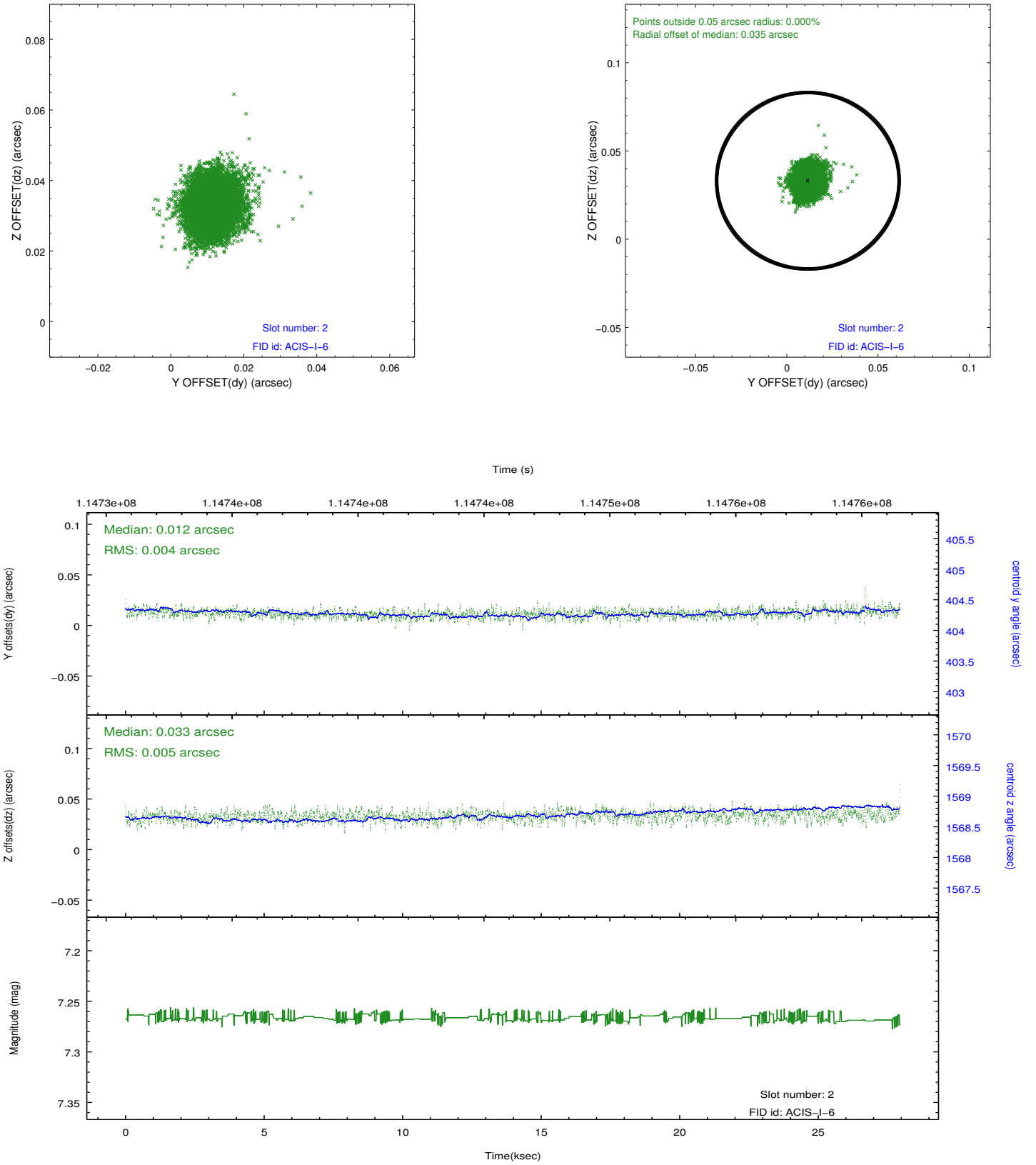
2.5.1 Slot 0



2.5.2 Slot 1



2.5.3 Slot 2



A Summary

A.1 Status

V&V Scientist	Beth Sundheim
V&V Date (YYYY-MM-DD)	2012.09.25
V&V Edition	1
V&V Disposition and Status	OK
V&V Charge Time	27.094

A.2 Comments