

V&V Reference Report

L2 ASCDS Version : 7.6.9

Observation 2024 - L2 Version 001
Chandra X-Ray Center

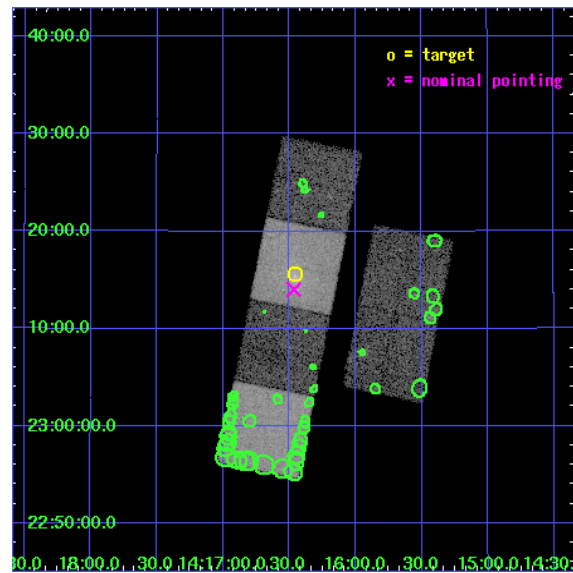
L2 Processing Date : Dec 30 2006

Contents

1	Front	2
2	OBI	3
2.1	OBI	3
2.1.1	Images	3
2.1.2	Bias	3
2.1.3	Parameters	4
2.1.4	Events	4
2.2	Compared Parameters	5
2.3	Aspect	6
2.4	Star Slots	9
2.4.1	Slot 3	9
2.4.2	Slot 4	10
2.4.3	Slot 5	11
2.4.4	Slot 6	12
2.4.5	Slot 7	13
2.5	FID Slots	14
2.5.1	Slot 0	14
2.5.2	Slot 1	15
2.5.3	Slot 2	16
3	Point Sources	17
A	Summary	18
A.1	Status	18
A.2	Comments	18

1 Front

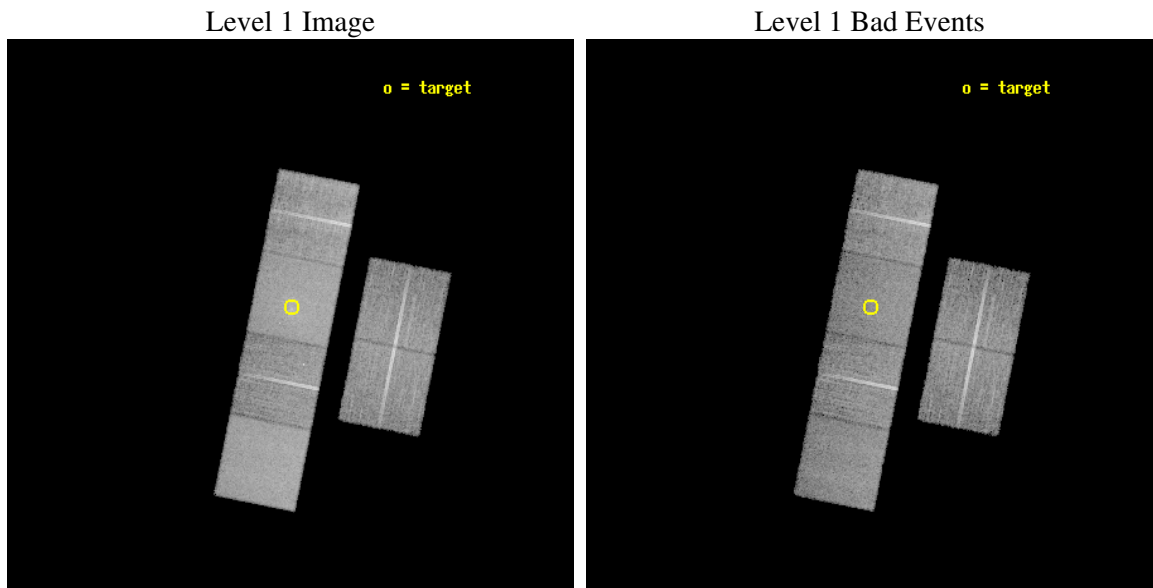
seq_num	600158
obs_id	2024
title	THE X-RAY STRUCTURE OF OLD, FOSSIL GALAXY GROUPS
observer	Dr Laurence Jones
object	RXJ1416.4+2315
dtcycle	0
cycle	P
ra_targ	214.112917
dec_targ	23.259611
ra_nom	214.11651614523
dec_nom	23.234030945099
roll_nom	281.36240503566
revision	2
ontime	14752.000013739
livetime	14565.201306977
ontime2	14752.000013739
ontime3	14752.000013739
ontime5	14752.000013739
ontime6	14752.000013739
ontime7	14752.000013739
ontime8	14748.759183079
l2events	158044



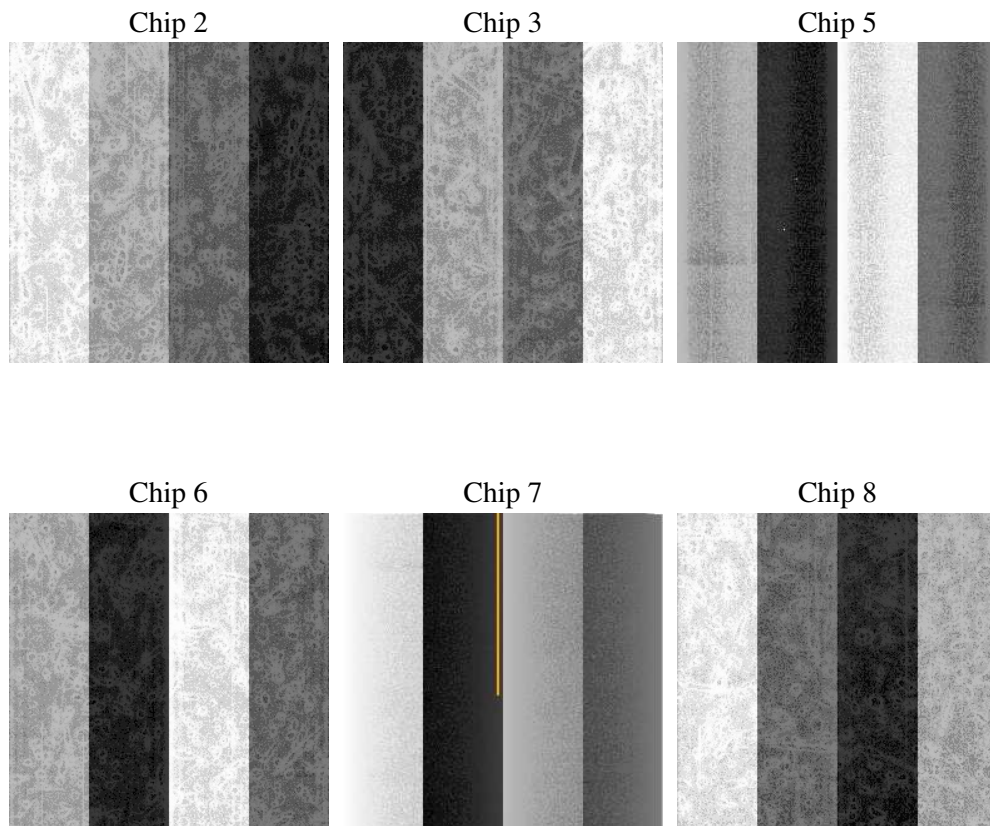
2 OBI

2.1 OBI

2.1.1 Images



2.1.2 Bias



2.1.3 Parameters

obi_num	0
ascdsver	7.6.9
caldbver	3.2.4
date	2006-12-31T02:27:12
revision	2

sched_exp_time	15000.000000
ontime	14759.50233303
ontime2	14759.50233303
ontime3	14759.502352938
ontime5	14759.50233303
ontime6	14759.50233303
ontime7	14759.50233303
ontime8	14756.261392683
l1events	672676

2.1.4 Events

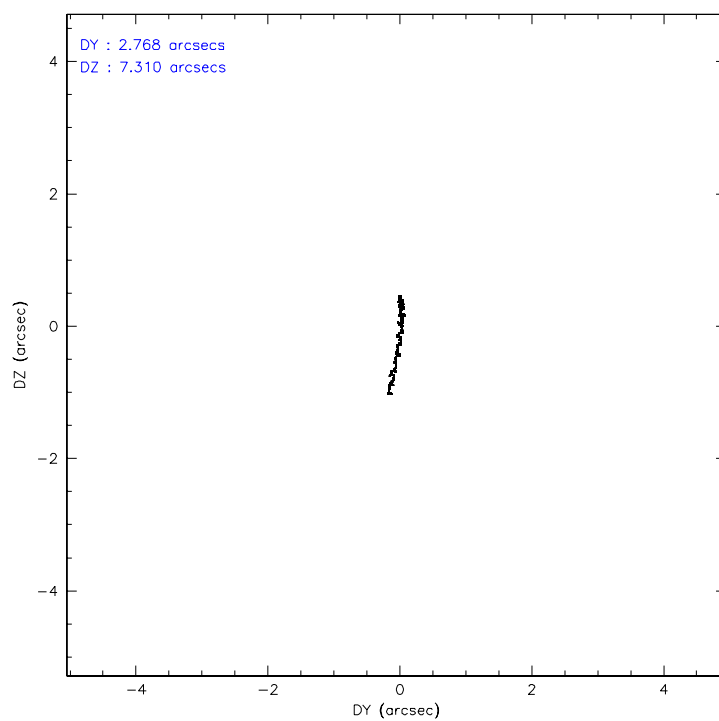
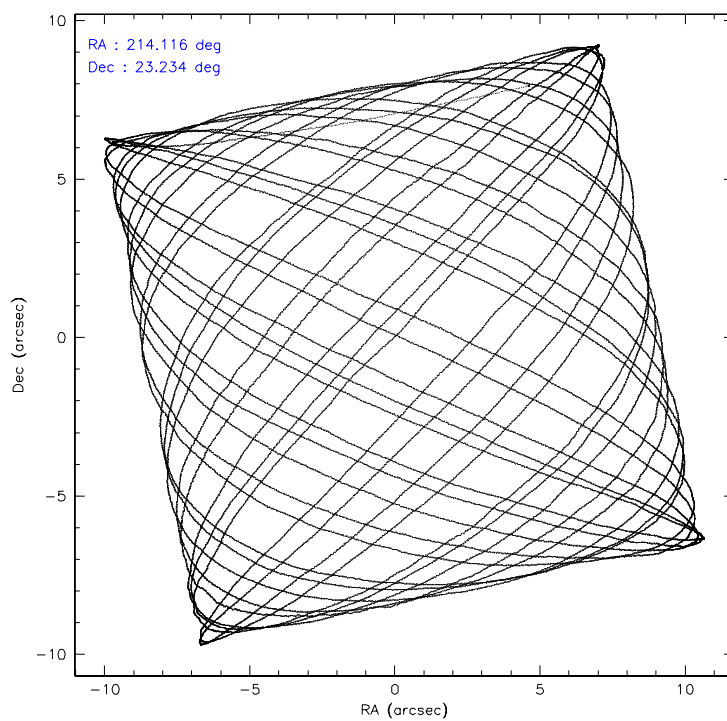
	ccd 2	ccd 3	ccd 5	ccd 6	ccd 7	ccd 8
level 1 events	96105	89505	135027	97125	133559	121355
rejected events	84540	78502	74718	85142	74932	96896
rejected %	87%	87%	55%	87%	56%	79%

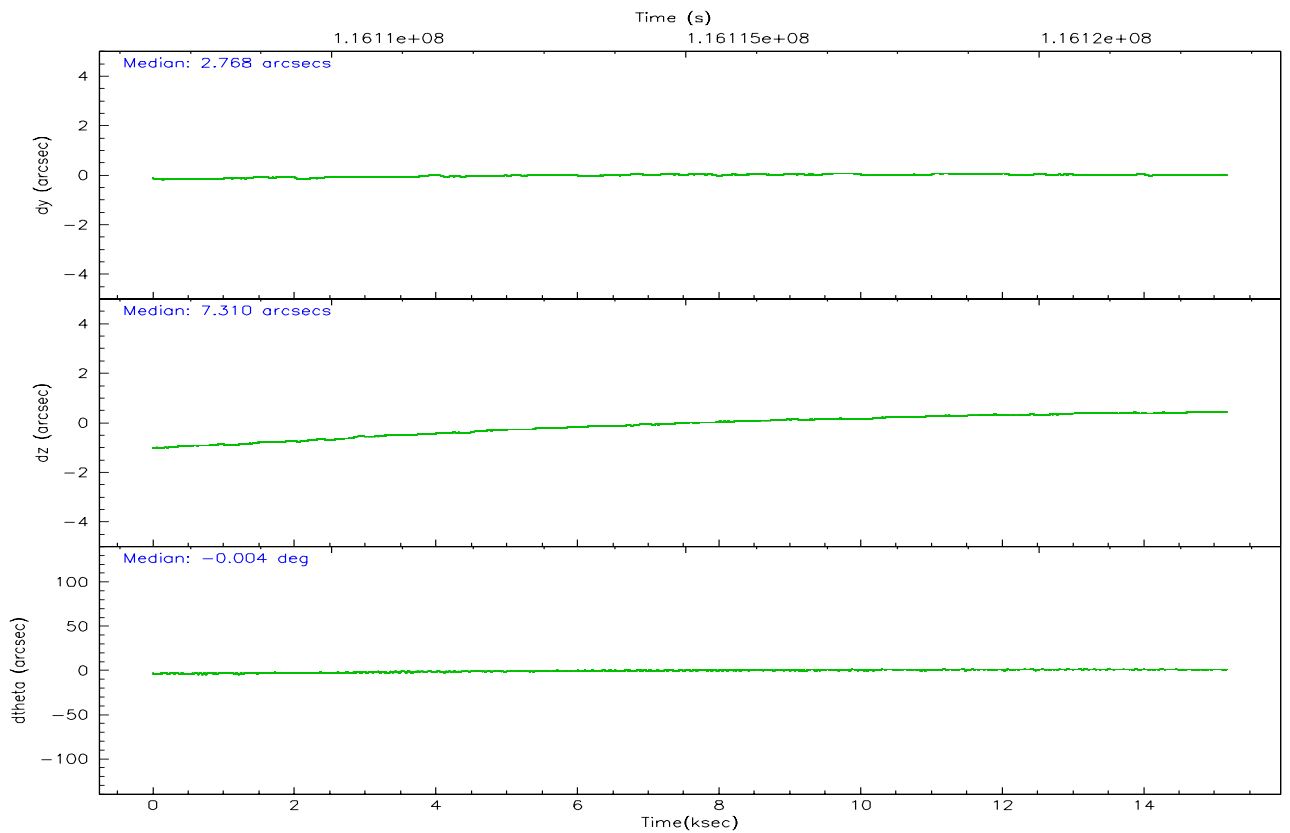
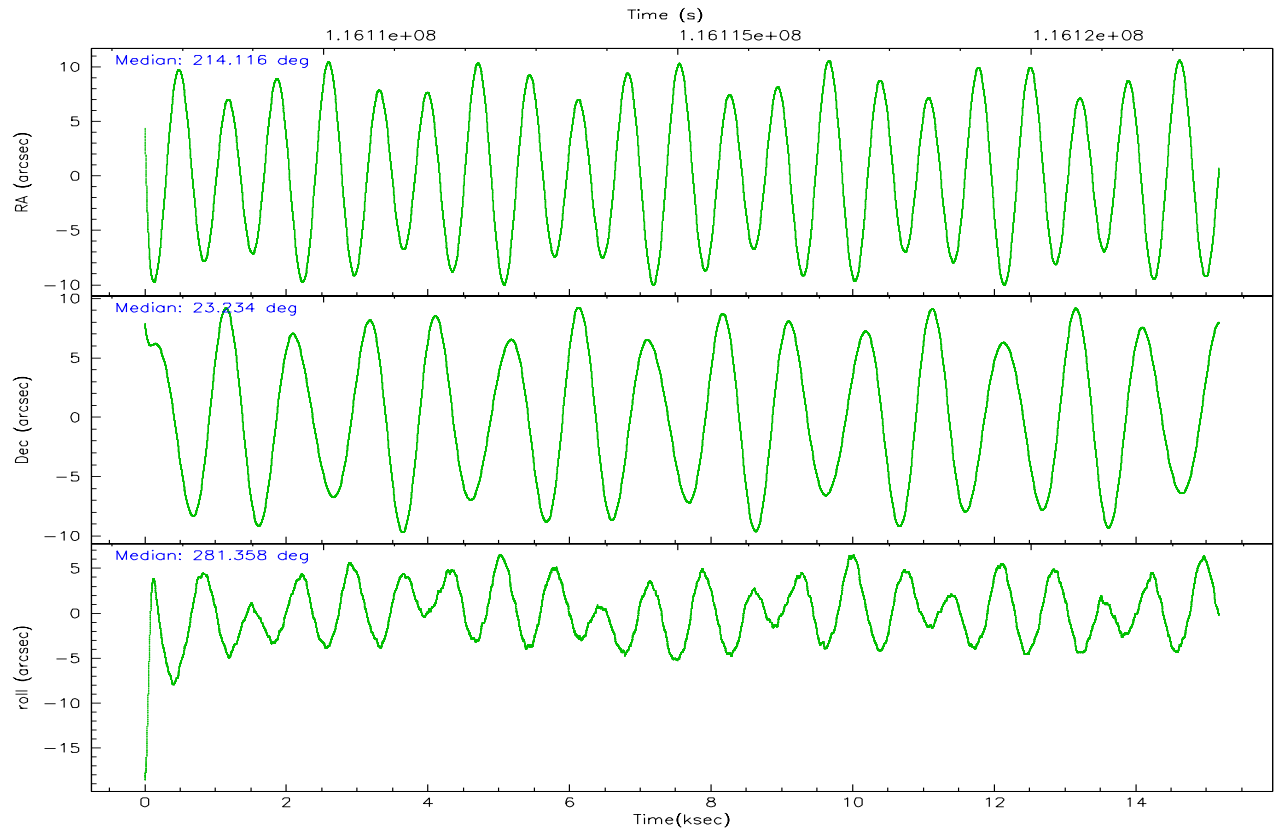
	ccd 2	ccd 3	ccd 5	ccd 6	ccd 7	ccd 8
grade 0 events	5186	4816	3441	5120	6034	7868
	5%	5%	2%	5%	4%	6%
grade 1 events	43	42	93	38	66	78
	0%	0%	0%	0%	0%	0%
grade 2 events	2392	2166	18767	2329	14528	5337
	2%	2%	13%	2%	10%	4%
grade 3 events	1063	1056	1544	1151	3635	2551
	1%	1%	1%	1%	2%	2%
grade 4 events	1007	1049	1513	1111	3461	2402
	1%	1%	1%	1%	2%	1%
grade 5 events	3274	3579	6268	3958	8134	4899
	3%	3%	4%	4%	6%	4%
grade 6 events	1927	1917	35073	2276	30989	6302
	2%	2%	25%	2%	23%	5%
grade 7 events	81213	74880	68328	81142	66712	91918
	84%	83%	50%	83%	49%	75%

2.2 Compared Parameters

Parameter	Planned	Actual	Parameter	Planned	Actual
Instrument	ACIS	ACIS	Obspar format version number	6	6
Detector	ACIS-235678	ACIS-235678	Obspar file type	PREDICTED	ACTUAL
Grating	NONE	NONE	Obspar update status	NONE	UPDATED
Data mode	FAINT	FAINT	Number of optional ACIS chips dropped	0	0
Observation mode	POINTING	POINTING	On-chip summing requested	N	N
Pointing RA	214.096684	214.1165161452289	Subarray requested	NONE	NONE
Pointing Dec	23.254278	23.23403094509887	Alternating exposures requested	N	N
Pointing Roll	281.213616	281.3624050356603	Primary exposure time	0.000000	3.2
SIM focus pos (mm)	-0.684267	-0.6828225247311905			
SIM defocus (mm)	0	0.001444936568705701			
SIM translation stage pos (mm)	-190.132523	-190.1400660498719			
SIM translation stage offset (mm)	0	0.00754346686406393			
Observation start time	116107652.184000	116106797.10863			
Observation start date	2001-09-05T20:06:28	2001-09-05T19:53:17			
Observation end time	116122652.184000	116123083.33428			
Observation end date	2001-09-06T00:16:28	2001-09-06T00:24:43			
Read mode	TIMED	TIMED			

2.3 Aspect



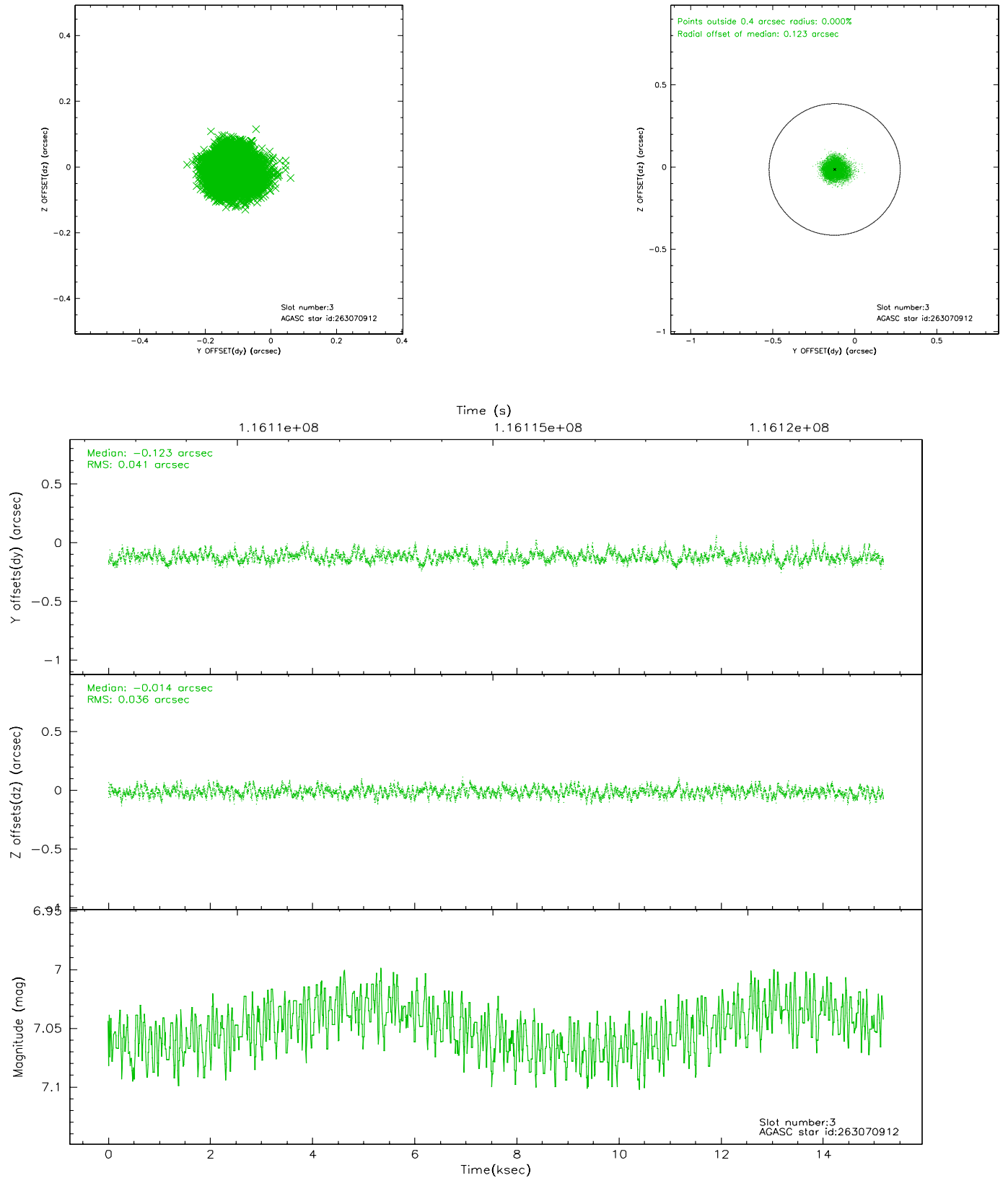


Slot Statistics

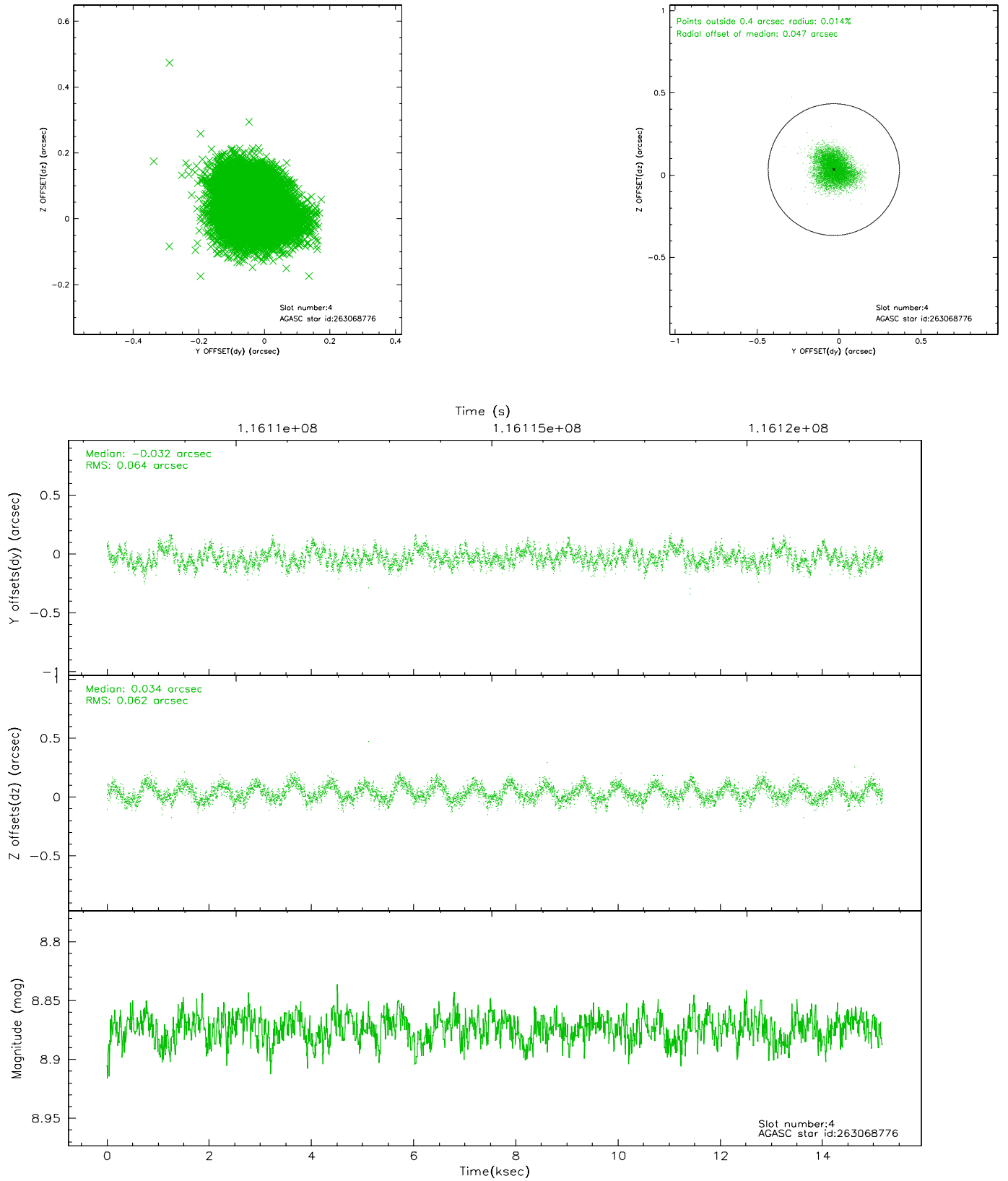
slot	status	id	mag	n_pts	med_dy	med_dz	dr1	dr2	ra	dec	mean_y	mean_z
0	FID	ACIS-S-2	7.11	3702	0.014	0.032	0.011	0.023	0.000000	0.000000	-755.37	-1728.34
1	FID	ACIS-S-4	7.20	3702	-0.111	-0.015	0.008	0.015	0.000000	0.000000	2157.65	179.80
2	FID	ACIS-S-5	7.24	3702	0.068	-0.008	0.011	0.020	0.000000	0.000000	-1807.78	173.80
3	GUIDE	263070912	7.05	7405	-0.123	-0.014	0.058	0.092	213.756514	23.686063	-1743.91	-796.34
4	GUIDE	263068776	8.87	7405	-0.032	0.034	0.096	0.148	214.499885	23.608632	-994.62	1554.32
5	GUIDE	263068464	8.90	7404	0.166	0.040	0.066	0.107	214.145675	22.675072	2077.34	-244.05
6	GUIDE	263068016	9.12	7401	-0.012	0.030	0.114	0.177	214.662709	23.066822	1023.48	1709.94
7	GUIDE	263071296	9.18	7399	0.001	-0.091	0.083	0.134	213.703398	22.803526	1336.79	-1593.88

2.4 Star Slots

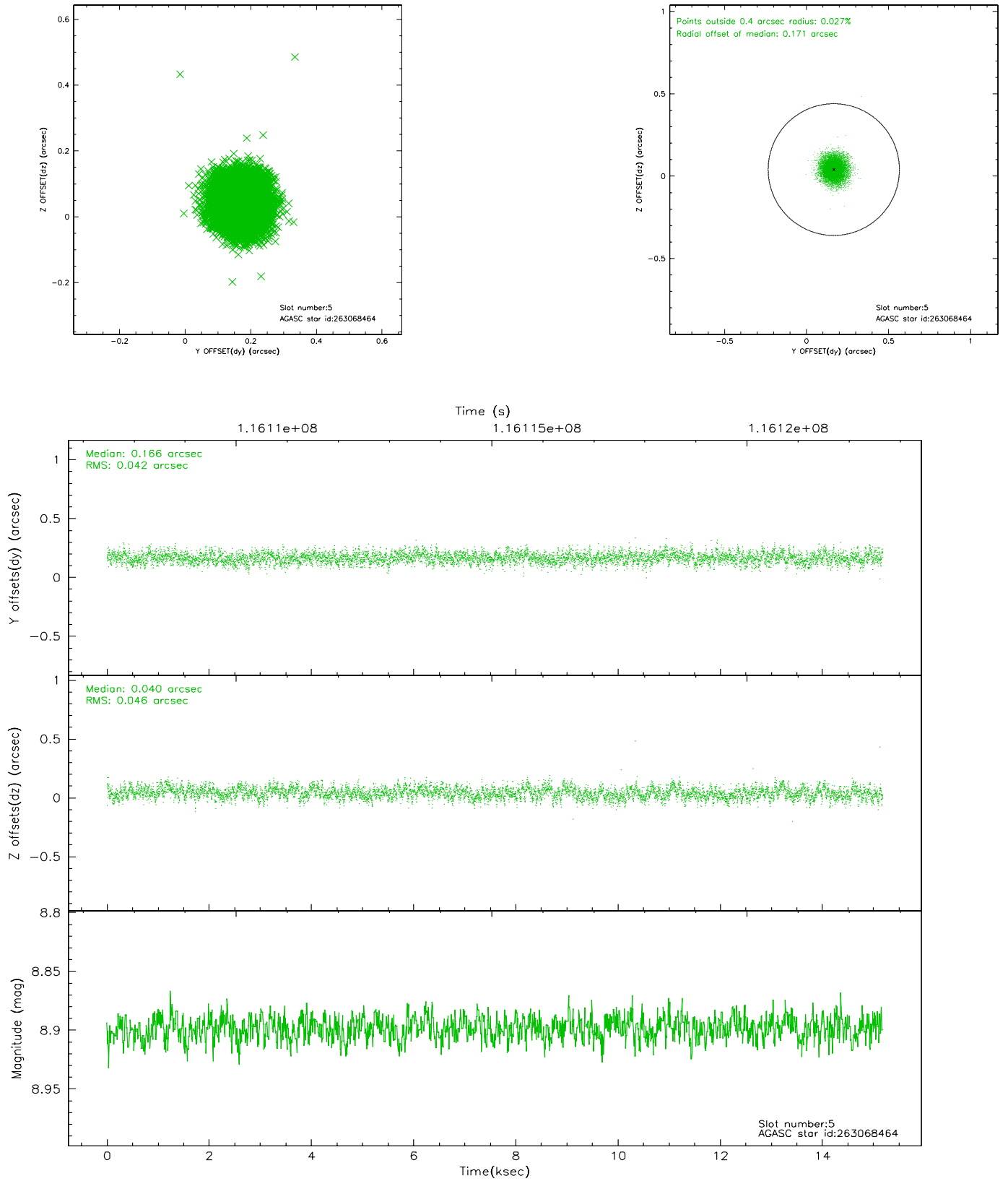
2.4.1 Slot 3



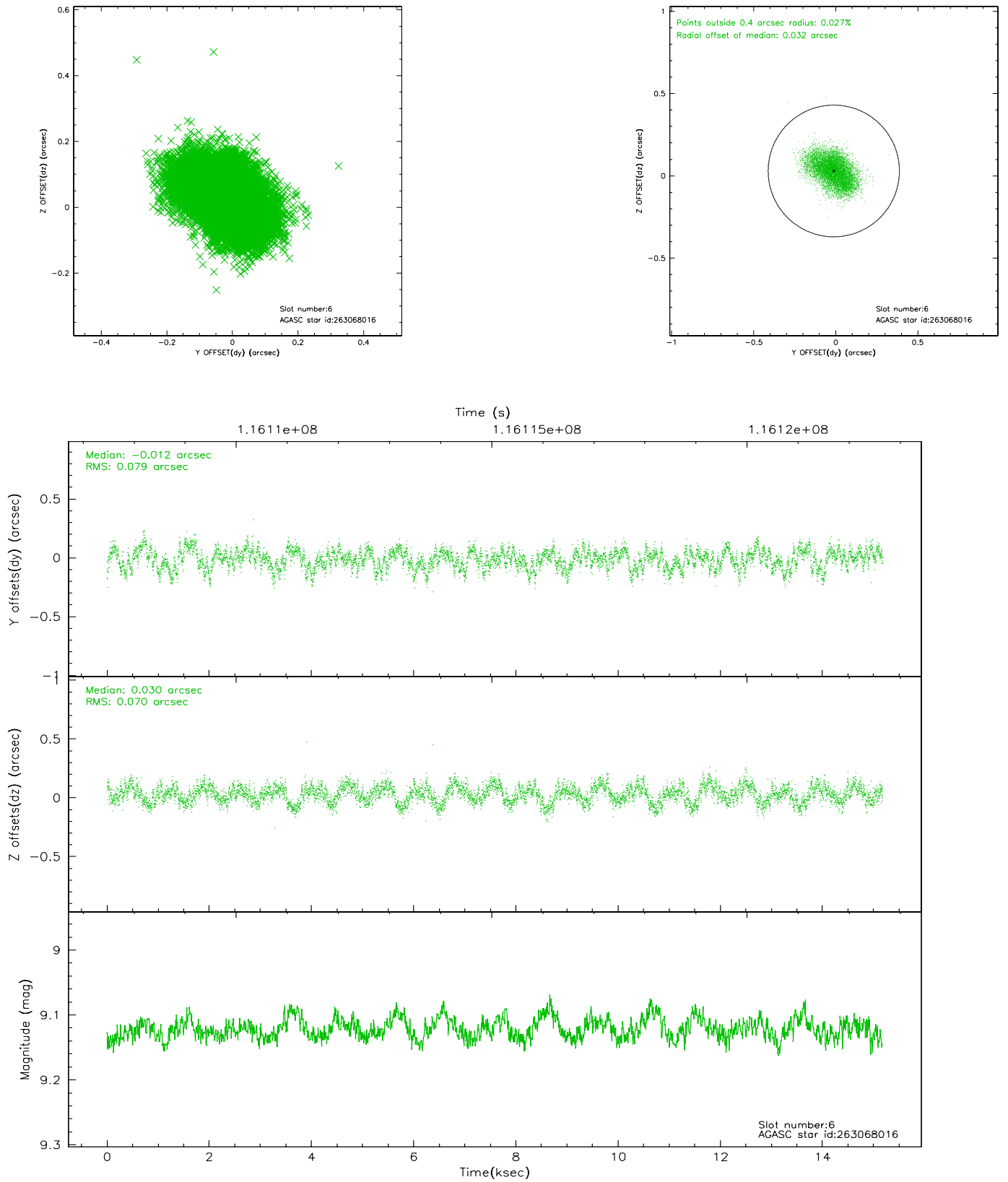
2.4.2 Slot 4



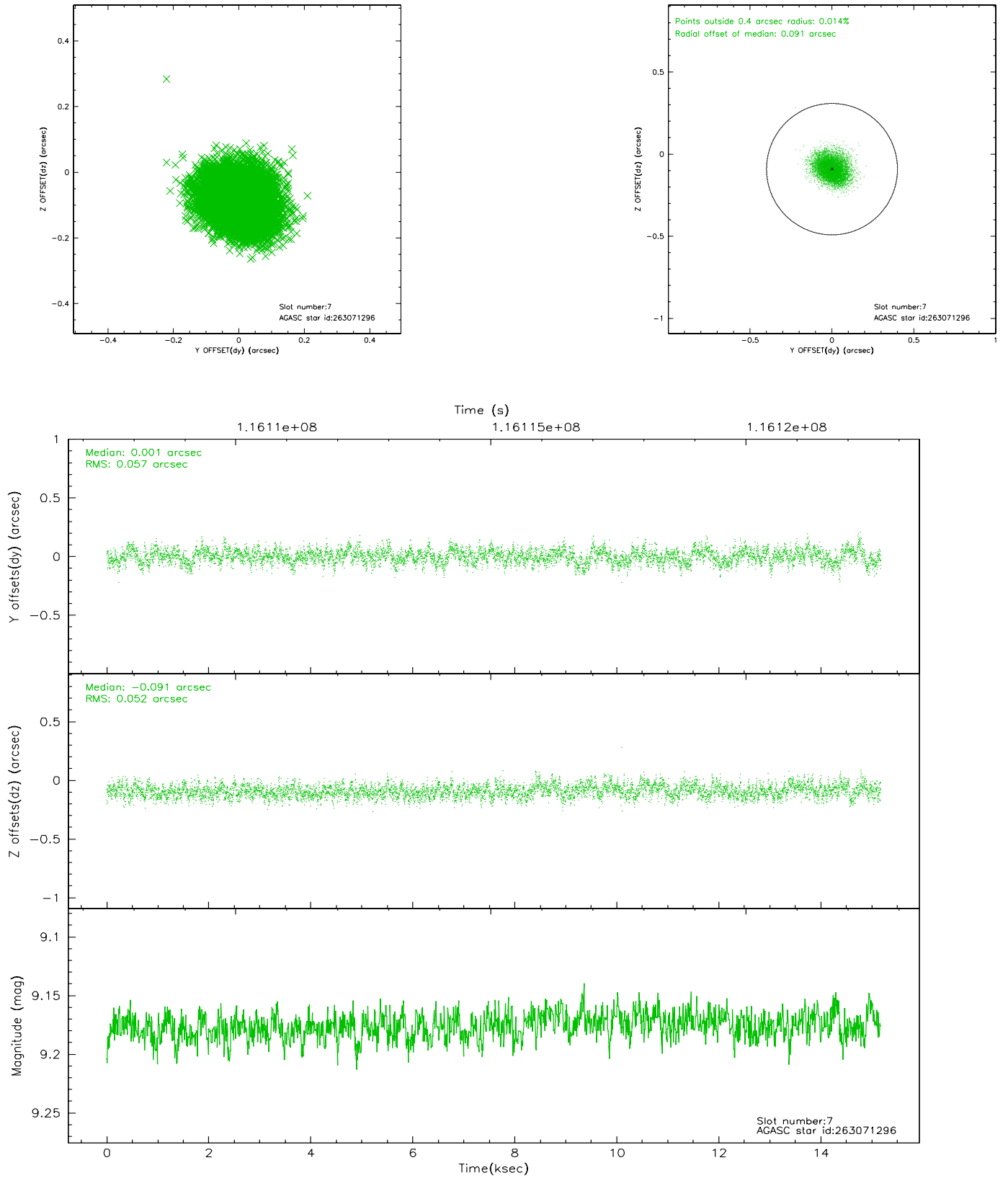
2.4.3 Slot 5



2.4.4 Slot 6

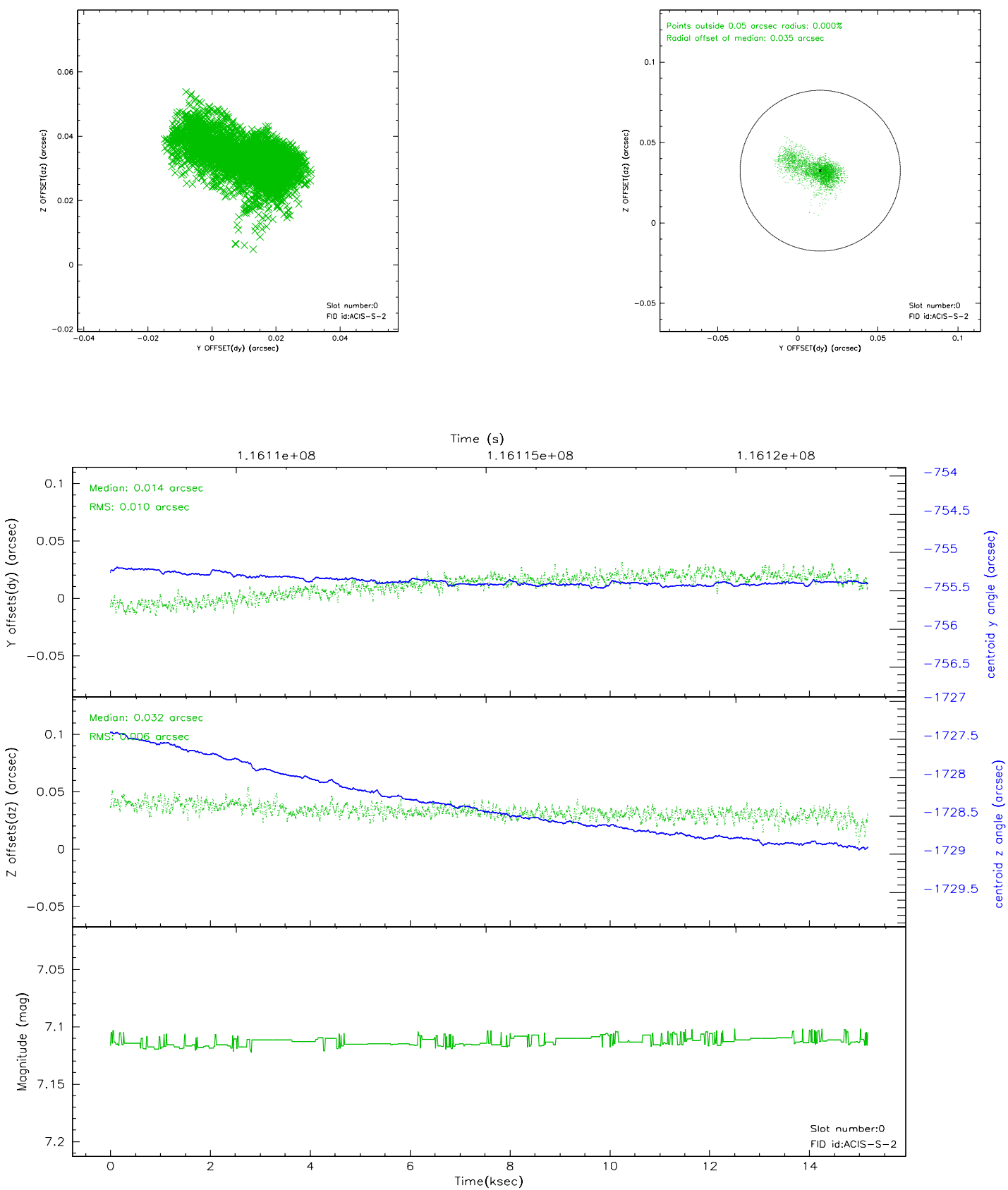


2.4.5 Slot 7

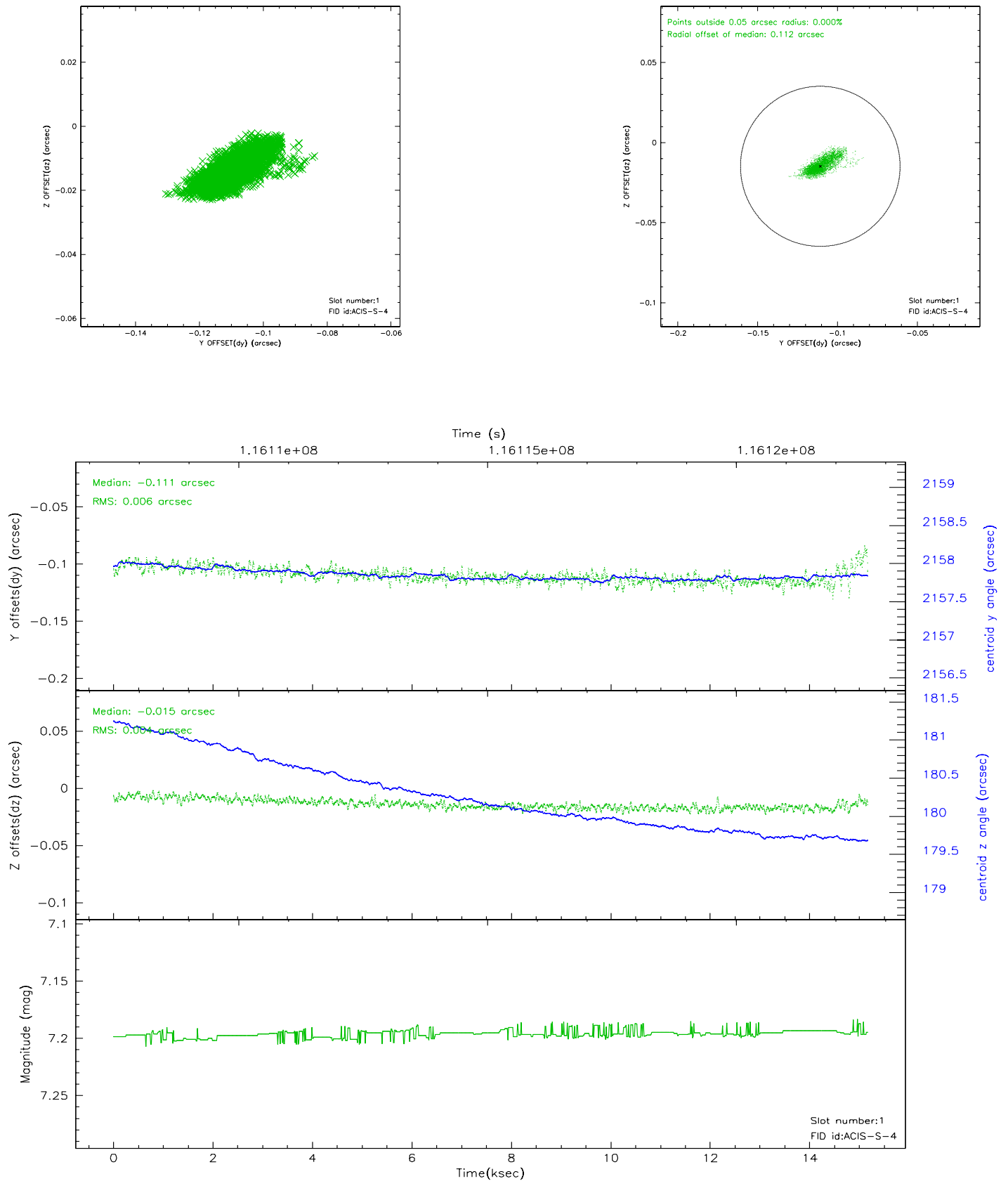


2.5 FID Slots

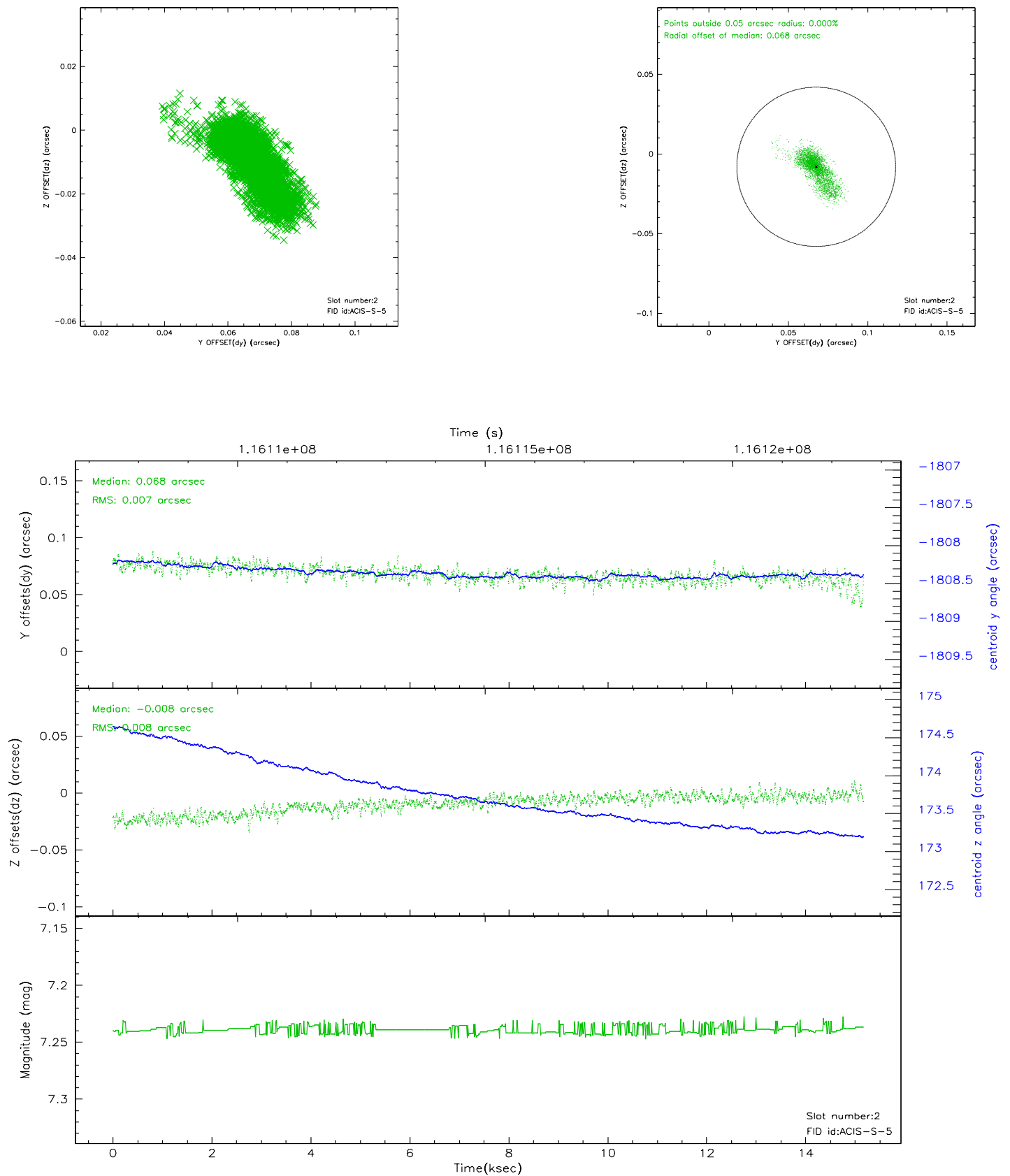
2.5.1 Slot 0



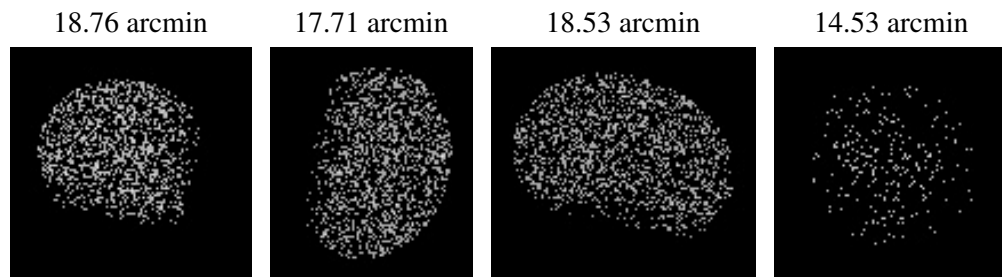
2.5.2 Slot 1



2.5.3 Slot 2



3 Point Sources



A Summary

A.1 Status

V&V Scientist	Beth Sundheim
V&V Date (YYYY-MM-DD)	2007.01.03
V&V Edition	1
V&V Disposition and Status	OK
V&V Charge Time	14.76

A.2 Comments