

V&V Reference Report

L2 ASCDS Version : 8.4.5

Observation 1874 - L2 Version 3
Chandra X-Ray Center

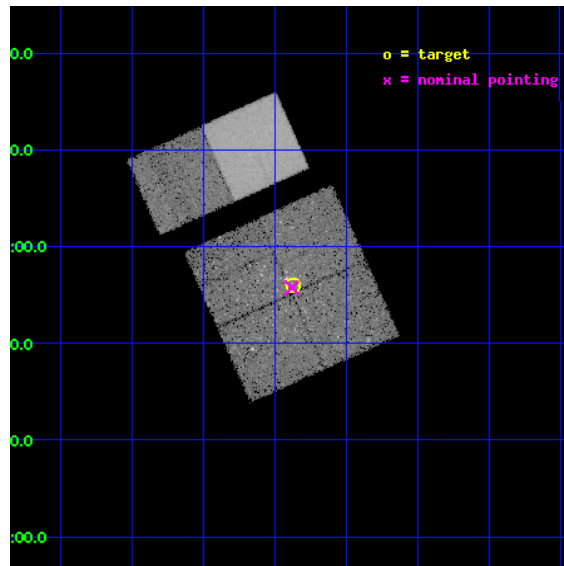
L2 Processing Date : Sep 6 2012

Contents

1	Front	2
2	OBI	3
2.1	OBI	3
2.1.1	Images	3
2.1.2	Bias	3
2.1.3	Parameters	4
2.1.4	Events	4
2.2	Compared Parameters	5
2.3	Aspect	6
2.4	Star Slots	9
2.4.1	Slot 3	9
2.4.2	Slot 4	10
2.4.3	Slot 5	11
2.4.4	Slot 6	12
2.4.5	Slot 7	13
2.5	FID Slots	14
2.5.1	Slot 0	14
2.5.2	Slot 1	15
2.5.3	Slot 2	16
A	Summary	17
A.1	Status	17
A.2	Comments	17

1 Front

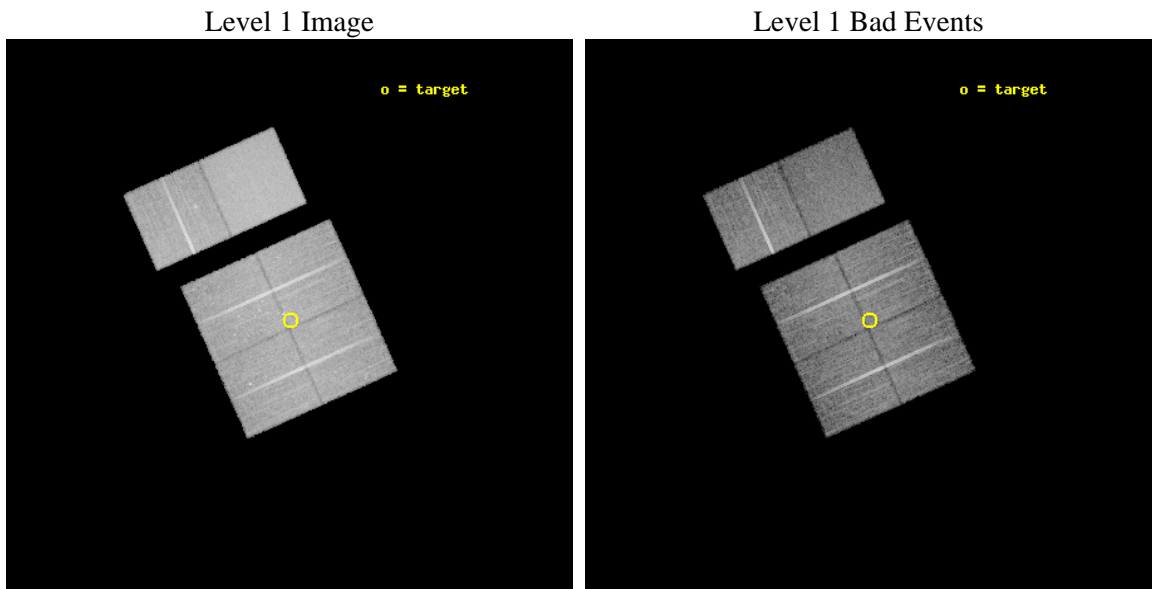
seq_num	200102	Sequence number
obs_id	1874	Observation id
title	STAR FORMATION IN THE ROSETTE MOLECULAR CLOUD	Proposal title
observer	Dr. Leisa Townsley	Principal investigator
object	ROSETTE FIELD 1	Source name
dtcycle	0	
cycle	P	events from which exps? Prim/Second/Both
ra_targ	97.966667	Observer's specified target RA [deg]
dec_targ	4.9325	Observer's specified target Dec [deg]
ra_nom	97.969976199551	Nominal RA [deg]
dec_nom	4.9289599968367	Nominal Dec [deg]
roll_nom	335.85569052749	Nominal Roll [deg]
revision	3	Processing version of data
ontime	19955.20001857	Sum of GTIs [s]
livetime	19702.515260356	Livetime [s]
ontime0	19955.20001857	Sum of GTIs [s]
ontime1	19955.20001857	Sum of GTIs [s]
ontime2	19955.20001857	Sum of GTIs [s]
ontime3	19955.20001857	Sum of GTIs [s]
ontime6	19955.20001857	Sum of GTIs [s]
ontime7	19955.20001857	Sum of GTIs [s]
l2events	163834	Number of level 2 events



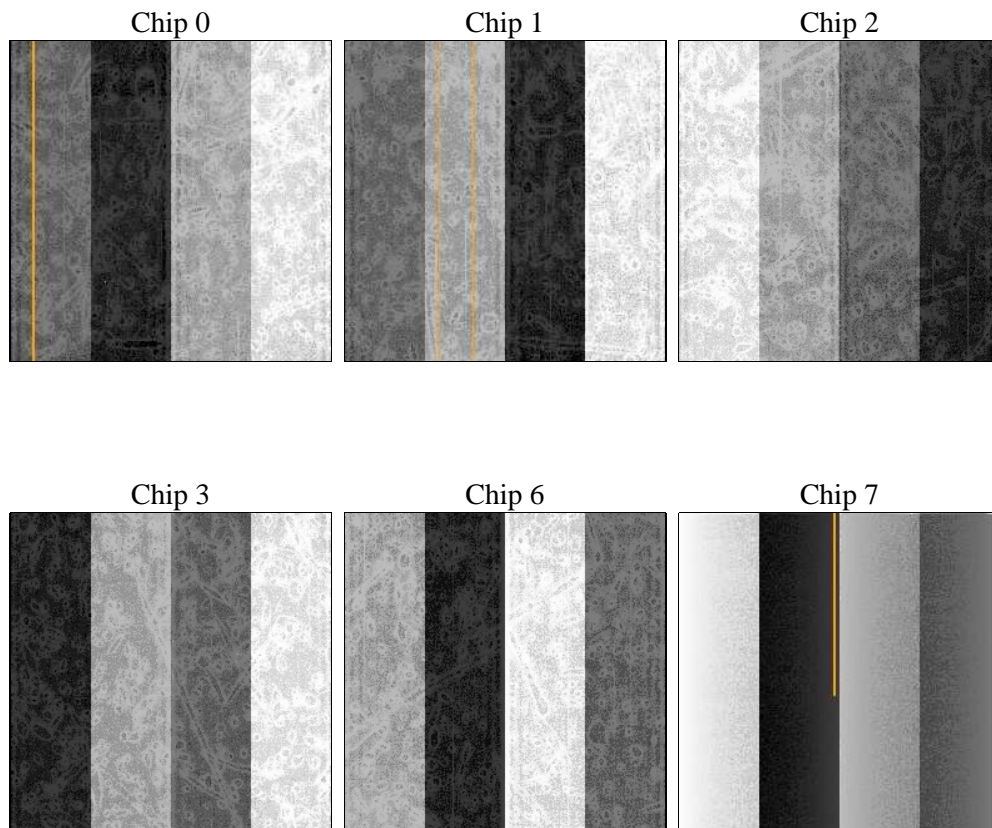
2 OBI

2.1 OBI

2.1.1 Images



2.1.2 Bias



2.1.3 Parameters

obi_num	0	Obi number	sched_exp_time	20000.000000	[s] Scheduled observation exposure time
ascdsver	8.4.5	Processing system revision	ontime	19955.20001857	Sum of GTIs [s]
caldsver	4.5.1.1	 	ontime0	19955.20001857	Sum of GTIs [s]
date	2012-09-06T09:31:29	Date and time of file creation	ontime1	19955.20001857	Sum of GTIs [s]
revision	3	Processing version of data	ontime2	19955.20001857	Sum of GTIs [s]
			ontime3	19955.20001857	Sum of GTIs [s]
			ontime6	19955.20001857	Sum of GTIs [s]
			ontime7	19955.20001857	Sum of GTIs [s]
			l1events	776971	Number of level 1 events

2.1.4 Events

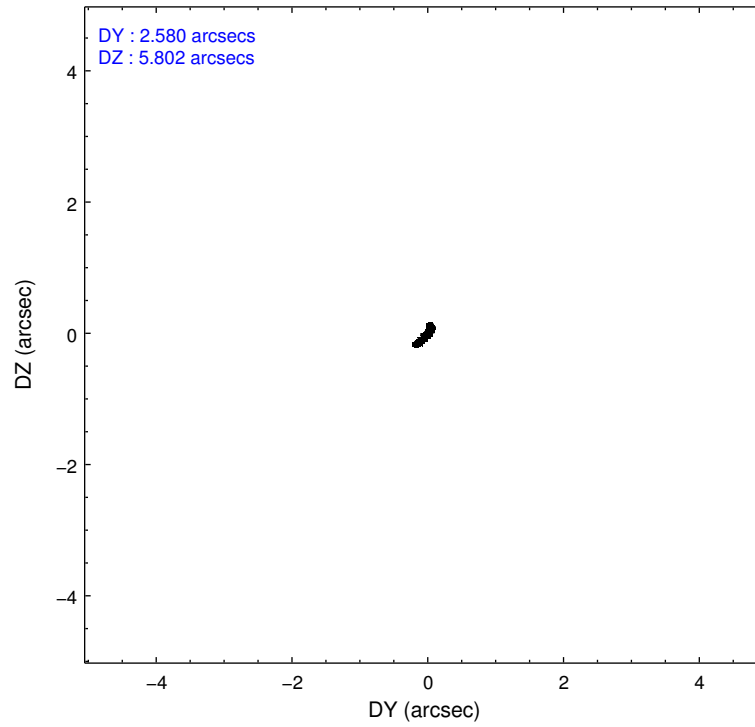
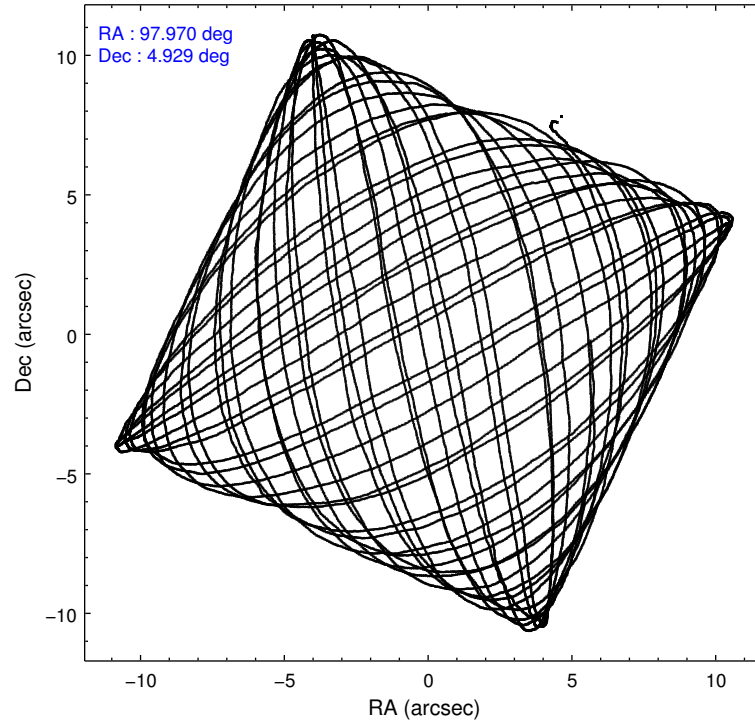
	ccd 0	ccd 1	ccd 2	ccd 3	ccd 6	ccd 7		ccd 0	ccd 1	ccd 2	ccd 3	ccd 6	ccd 7
level 1 events	115923	113858	124671	123079	127962	171478	grade 0 events	10677	9772	10722	9869	8854	8553
rejected events	96331	94862	105211	104565	110111	88308		9%	8%	8%	8%	6%	4%
rejected %	83%	83%	84%	84%	86%	51%	grade 1 events	69	72	76	79	77	140
								0%	0%	0%	0%	0%	0%
							grade 2 events	3420	3248	3451	3201	3238	15849
								2%	2%	2%	2%	2%	9%
							grade 3 events	1597	1624	1468	1453	1515	7158
								1%	1%	1%	1%	1%	4%
							grade 4 events	1392	1525	1386	1447	1409	7280
								1%	1%	1%	1%	1%	4%
							grade 5 events	4199	4522	4075	4451	5065	14538
								3%	3%	3%	3%	3%	8%
							grade 6 events	2511	2832	2441	2548	2838	44351
								2%	2%	1%	2%	2%	25%
							grade 7 events	92058	90263	101052	100031	104966	73609
								79%	79%	81%	81%	82%	42%

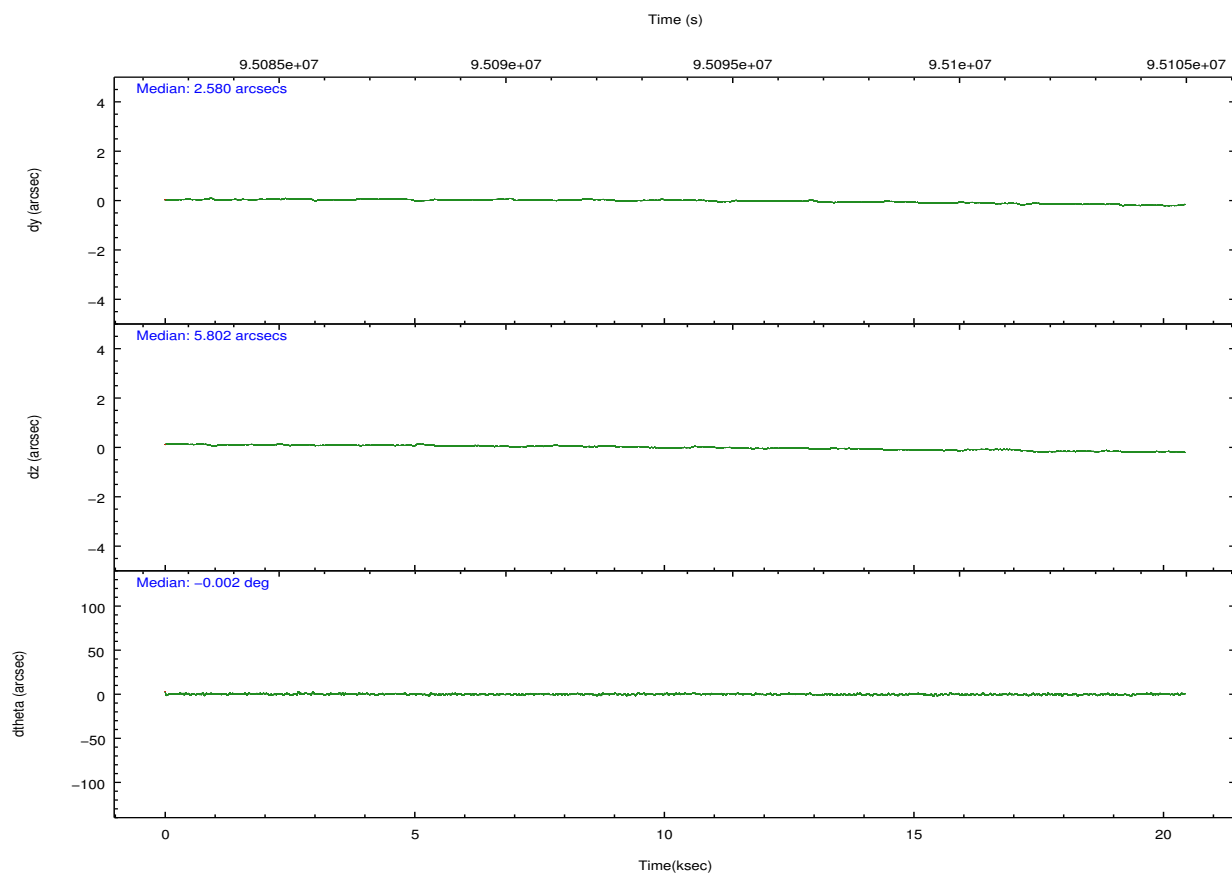
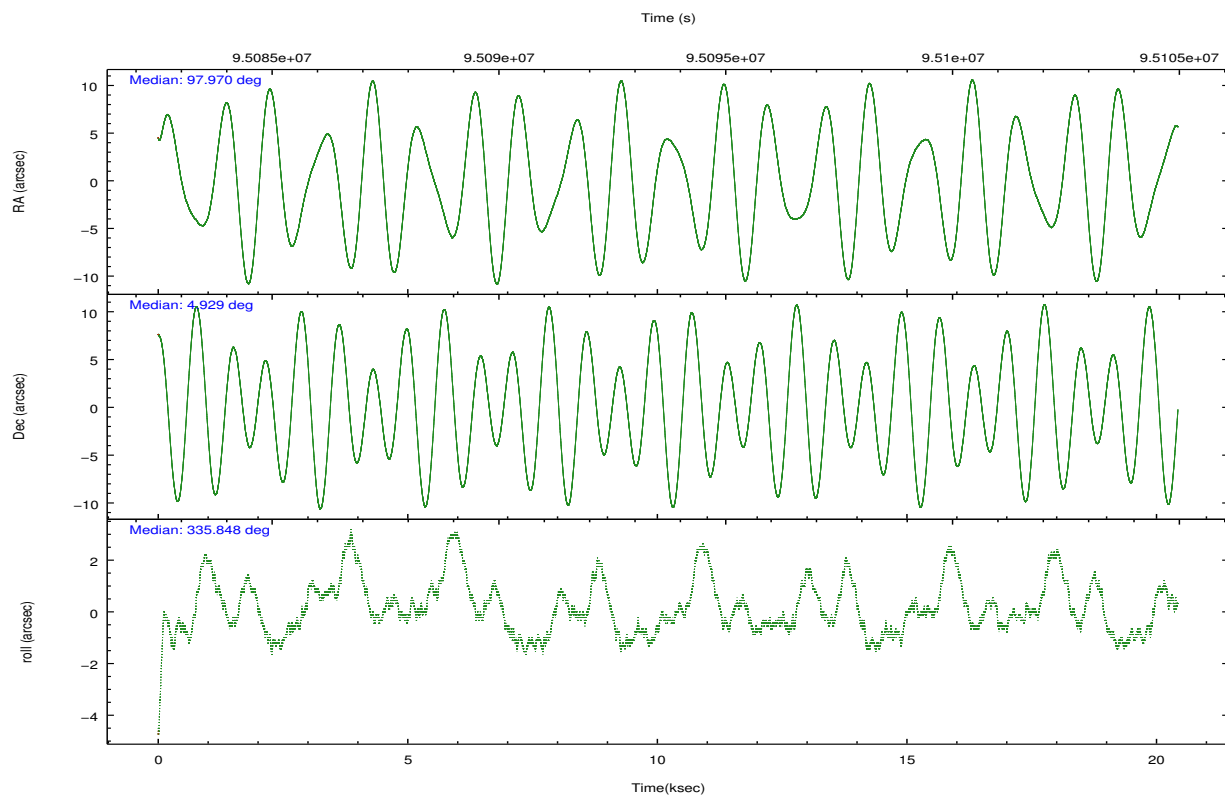
2.2 Compared Parameters

Parameter	Planned	Actual
Instrument	ACIS	ACIS
Detector	ACIS-012367	ACIS-012367
Grating	NONE	NONE
Data mode	FAINT	FAINT
Observation mode	POINTING	POINTING
[deg] Pointing RA	97.942501	97.96997619955116
[deg] Pointing Dec	4.926204	4.928959996836689
[deg] Pointing Roll	335.649368	335.8556905274899
[mm] SIM focus pos	-0.782348	-0.7809083437167272
[mm] SIM defocus	0	0.001439871863259334
[mm] SIM translation stage pos	-233.592463	-233.5874344608287
[mm] SIM translation stage offset	0	-0.005018542100998502
[s] Observation start time (MET)	95083941.184000	95082857.291161
Observation start date	2001-01-05T12:11:17	2001-01-05T11:54:17
[s] Observation end time (MET)	95103941.184000	95104075.816975
Observation end date	2001-01-05T17:44:37	2001-01-05T17:47:55
Read mode	TIMED	TIMED

Parameter	Planned	Actual
Obspar format version number	7	7
Obspar file type	PREDICTED	ACTUAL
Obspar update status	NONE	UPDATED
Number of optional ACIS chips dropped	0	0
On-chip summing requested	N	N
Subarray requested	NONE	NONE
Alternating exposures requested	N	N
[s] Primary exposure time	0.000000	3.2

2.3 Aspect



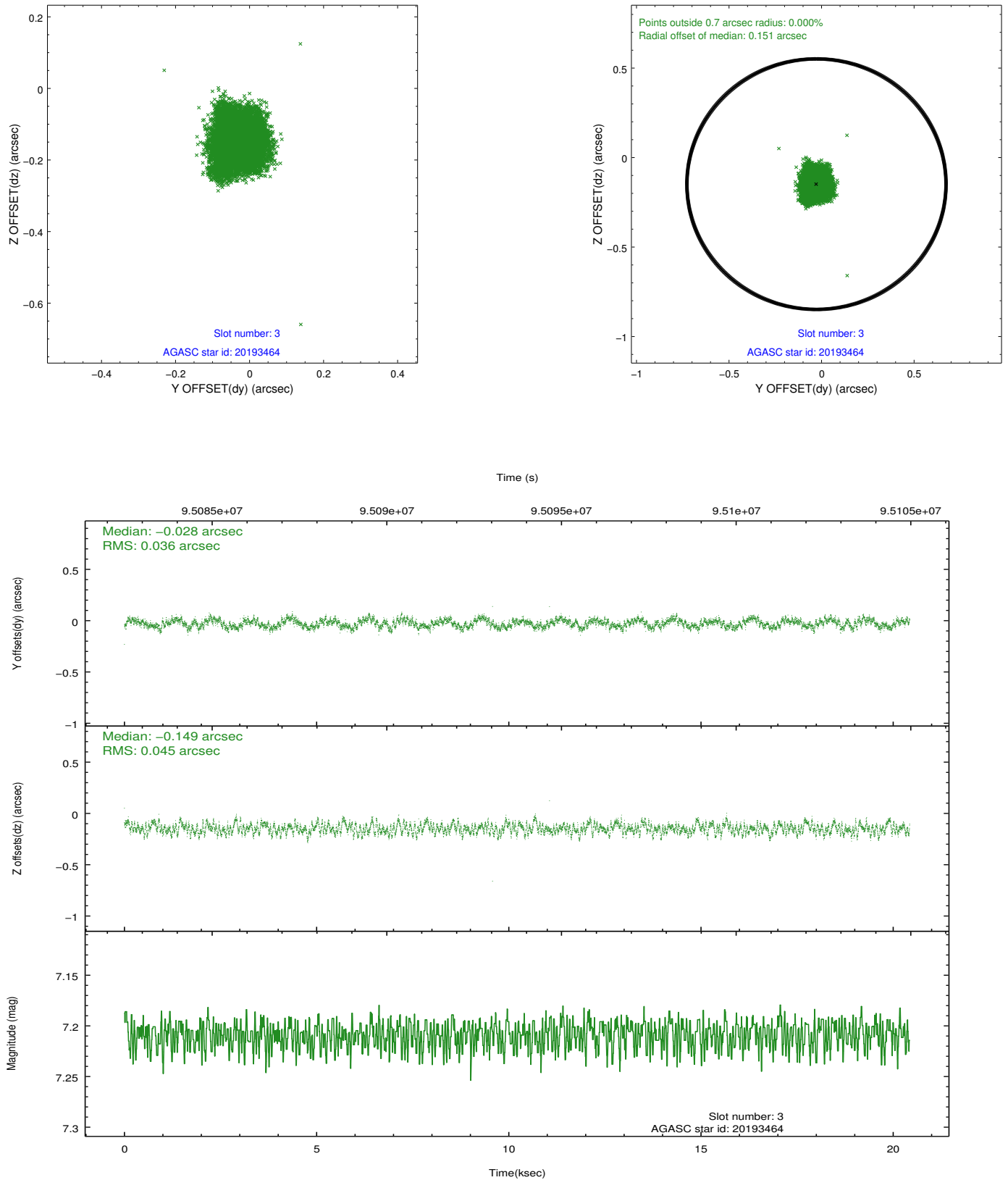


Slot Statistics

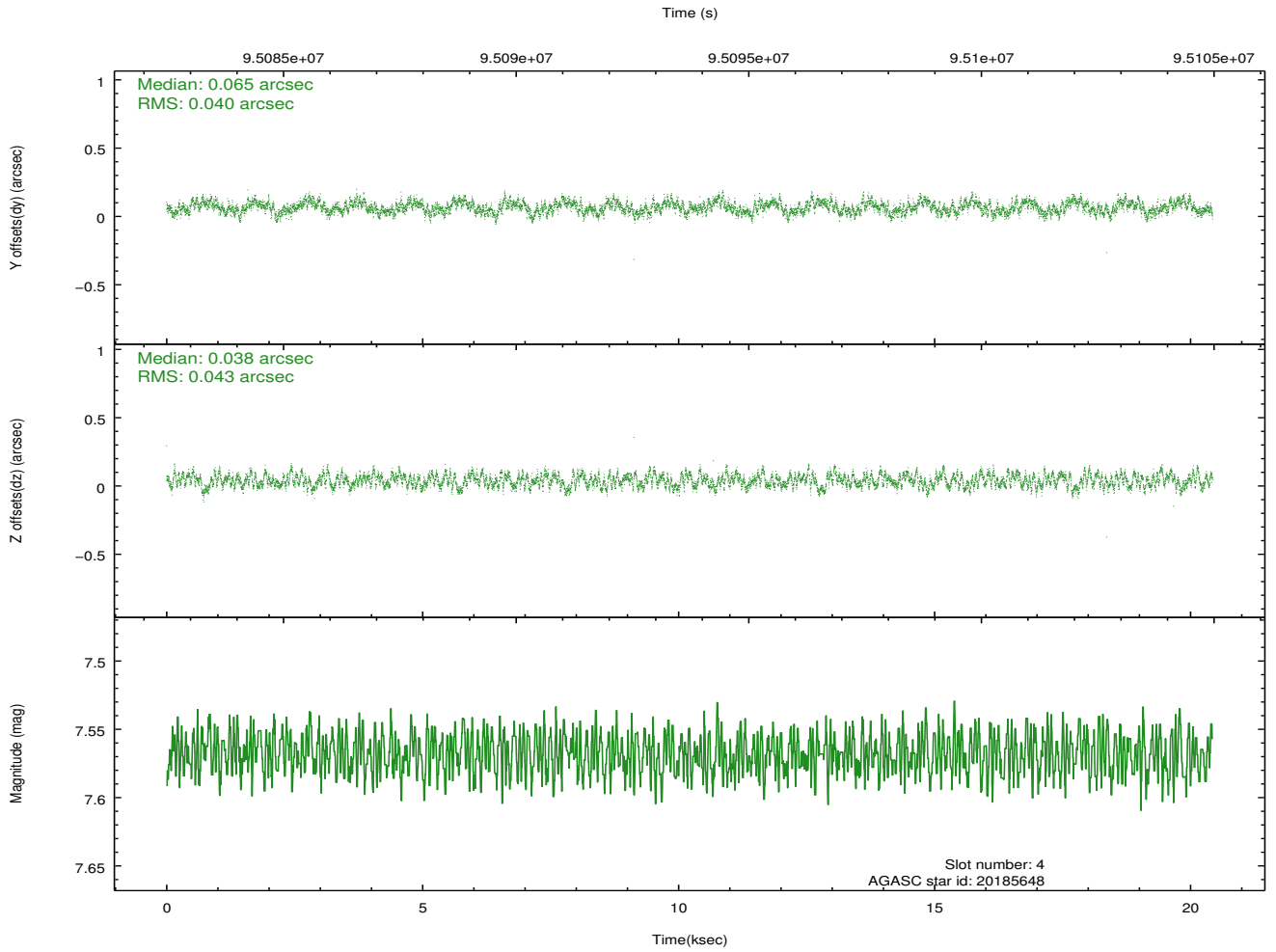
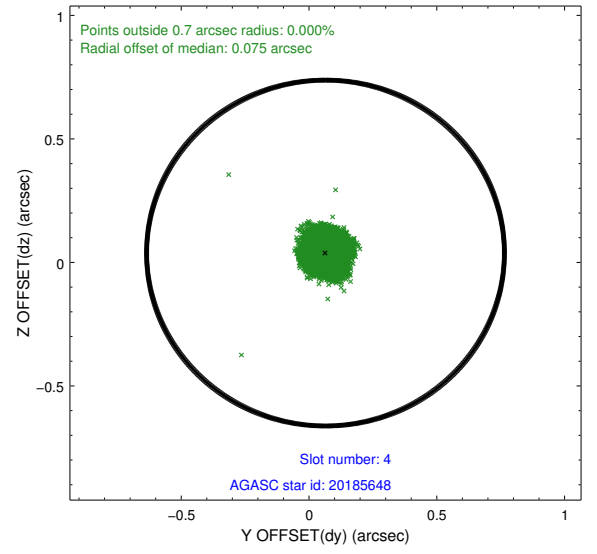
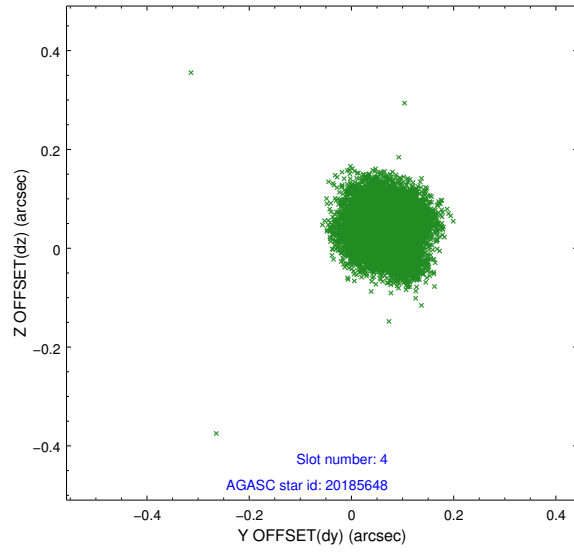
slot	status	id	mag	n_pts	med_dy	med_dz	dr1	dr2	ra	dec	mean_y	mean_z
0	FID	ACIS-I-2	7.16	4983	-0.027	-0.042	0.009	0.016	0.000000	0.000000	-756.95	-835.56
1	FID	ACIS-I-4	7.18	4983	-0.019	0.036	0.007	0.013	0.000000	0.000000	2157.04	1070.60
2	FID	ACIS-I-5	7.23	4982	-0.055	0.075	0.009	0.016	0.000000	0.000000	-1810.57	1068.70
3	GUIDE	20193464	7.21	9965	-0.028	-0.149	0.061	0.098	98.229775	5.396674	239.07	1968.42
4	GUIDE	20185648	7.57	9966	0.065	0.038	0.064	0.098	98.038775	4.823536	466.90	-193.23
5	GUIDE	20198352	8.56	9964	-0.102	0.081	0.060	0.096	97.622114	4.757293	-796.72	-1026.93
6	GUIDE	20192040	8.28	9966	0.097	-0.034	0.084	0.126	97.909981	5.026773	-255.78	282.36
7	GUIDE	20188336	7.98	9965	-0.033	0.066	0.061	0.097	98.476710	4.662384	2137.28	-73.10

2.4 Star Slots

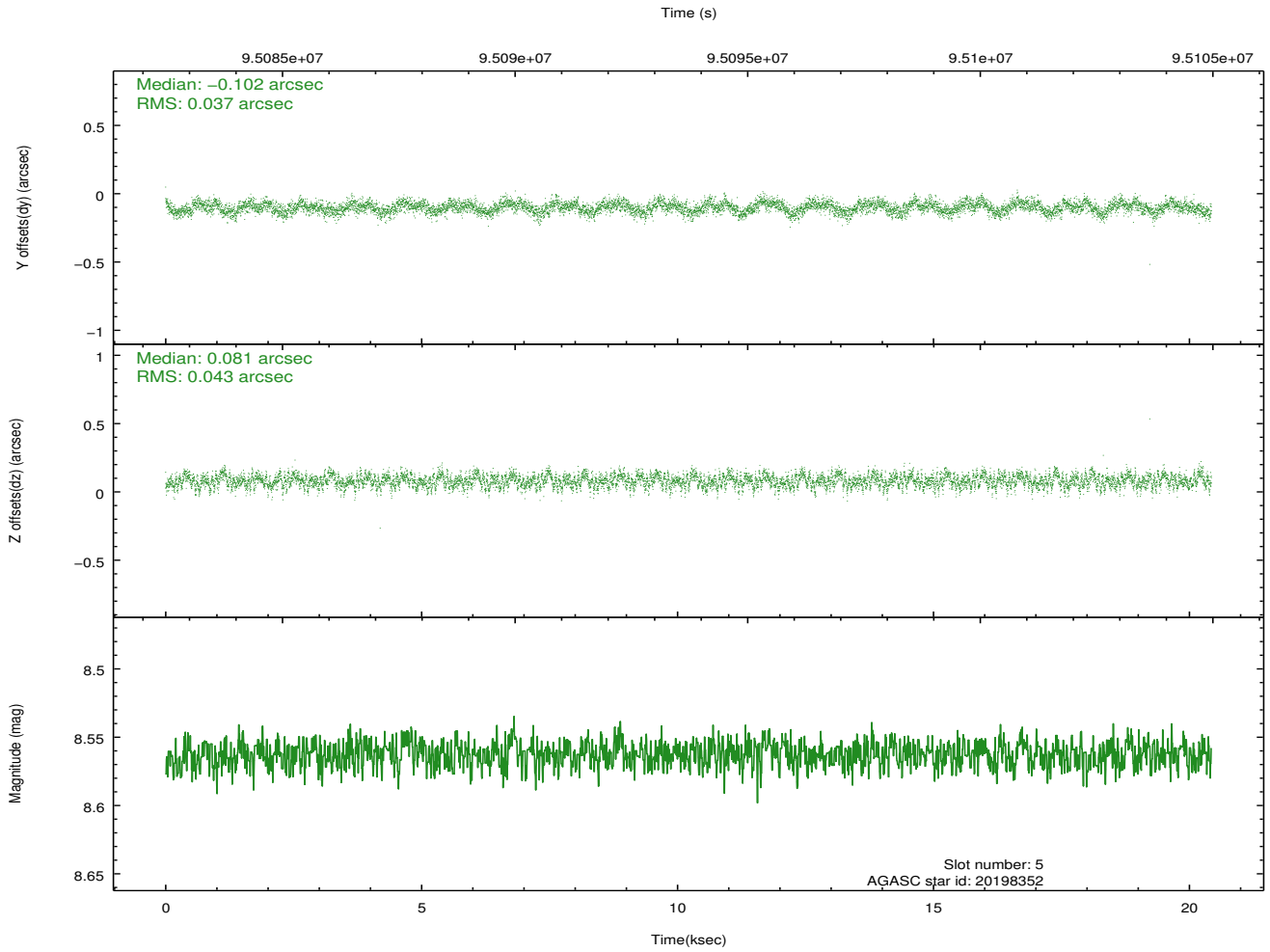
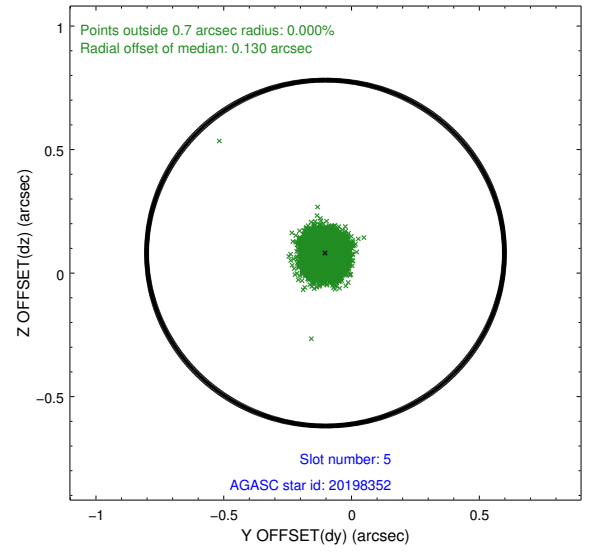
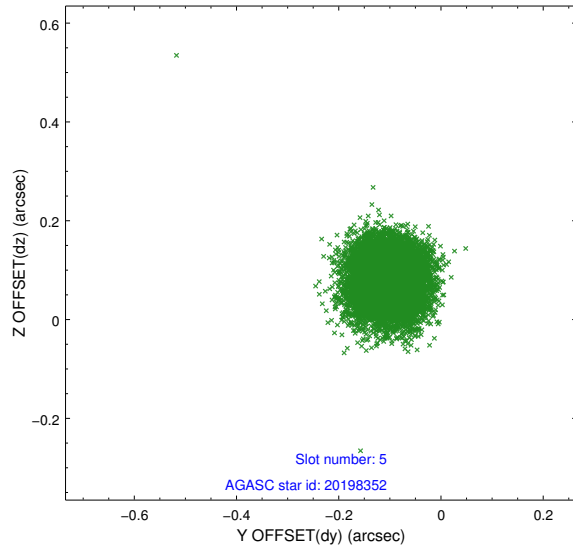
2.4.1 Slot 3



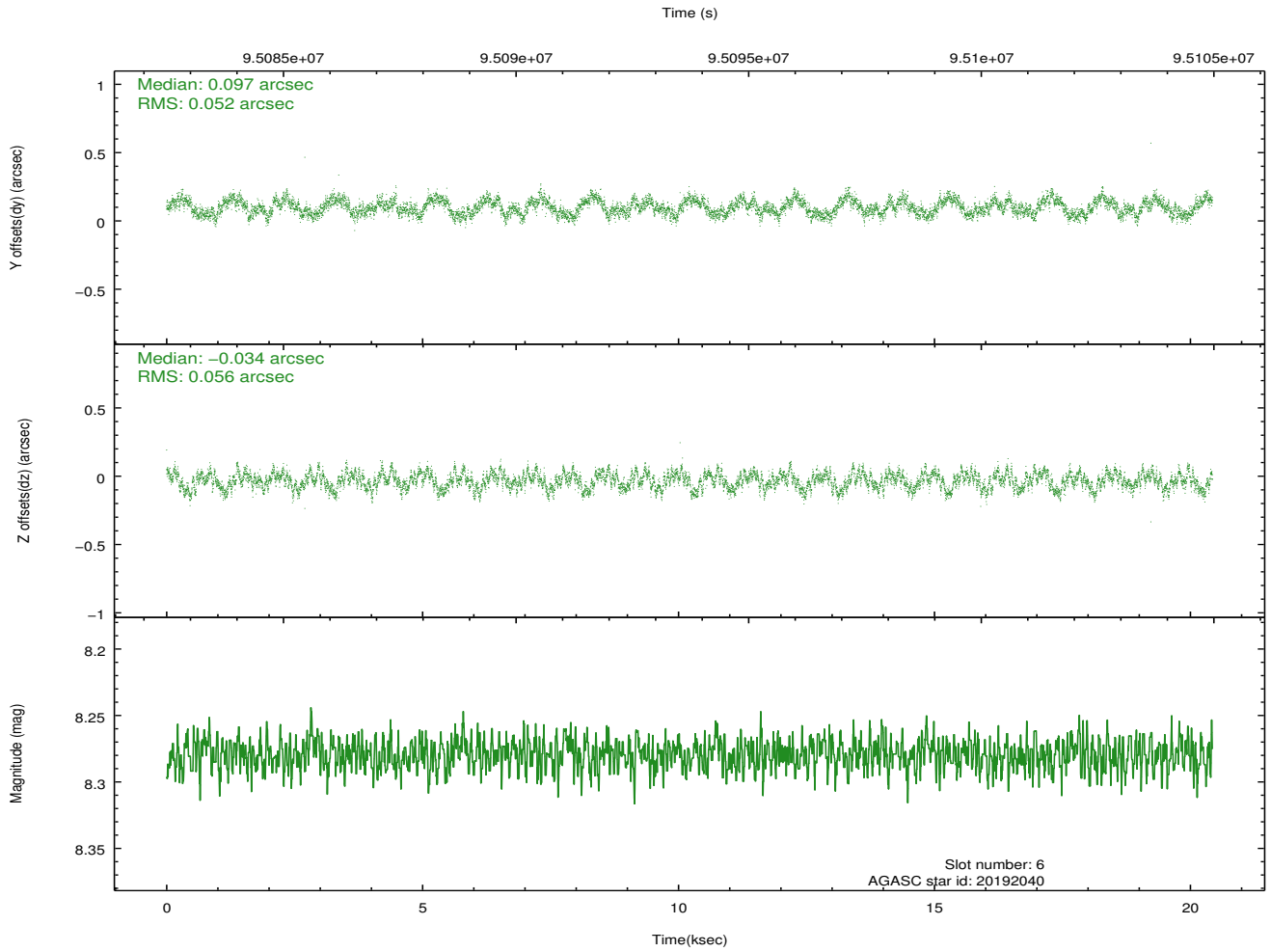
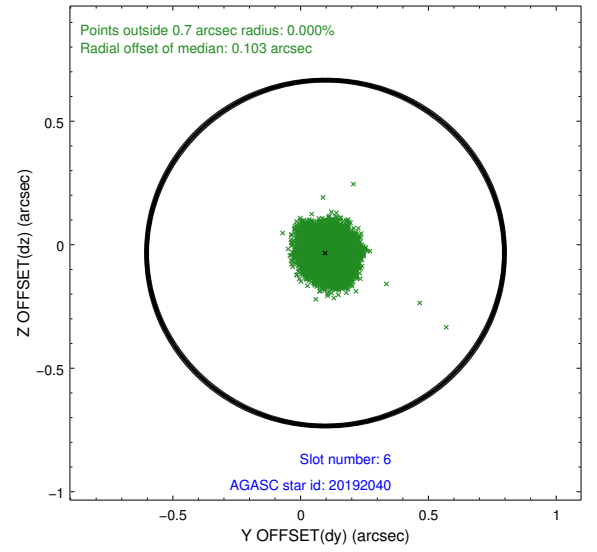
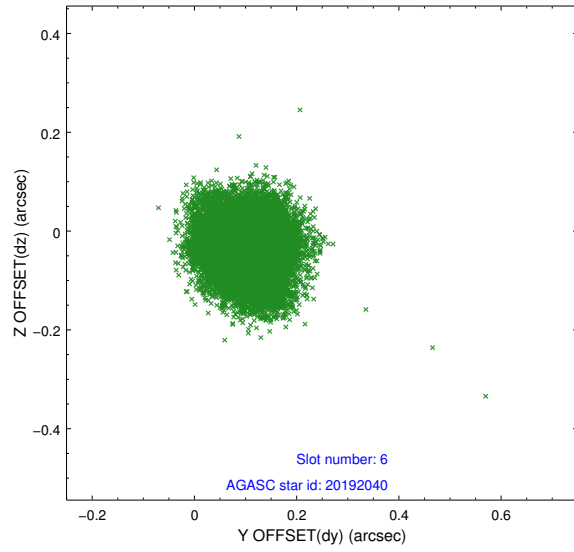
2.4.2 Slot 4



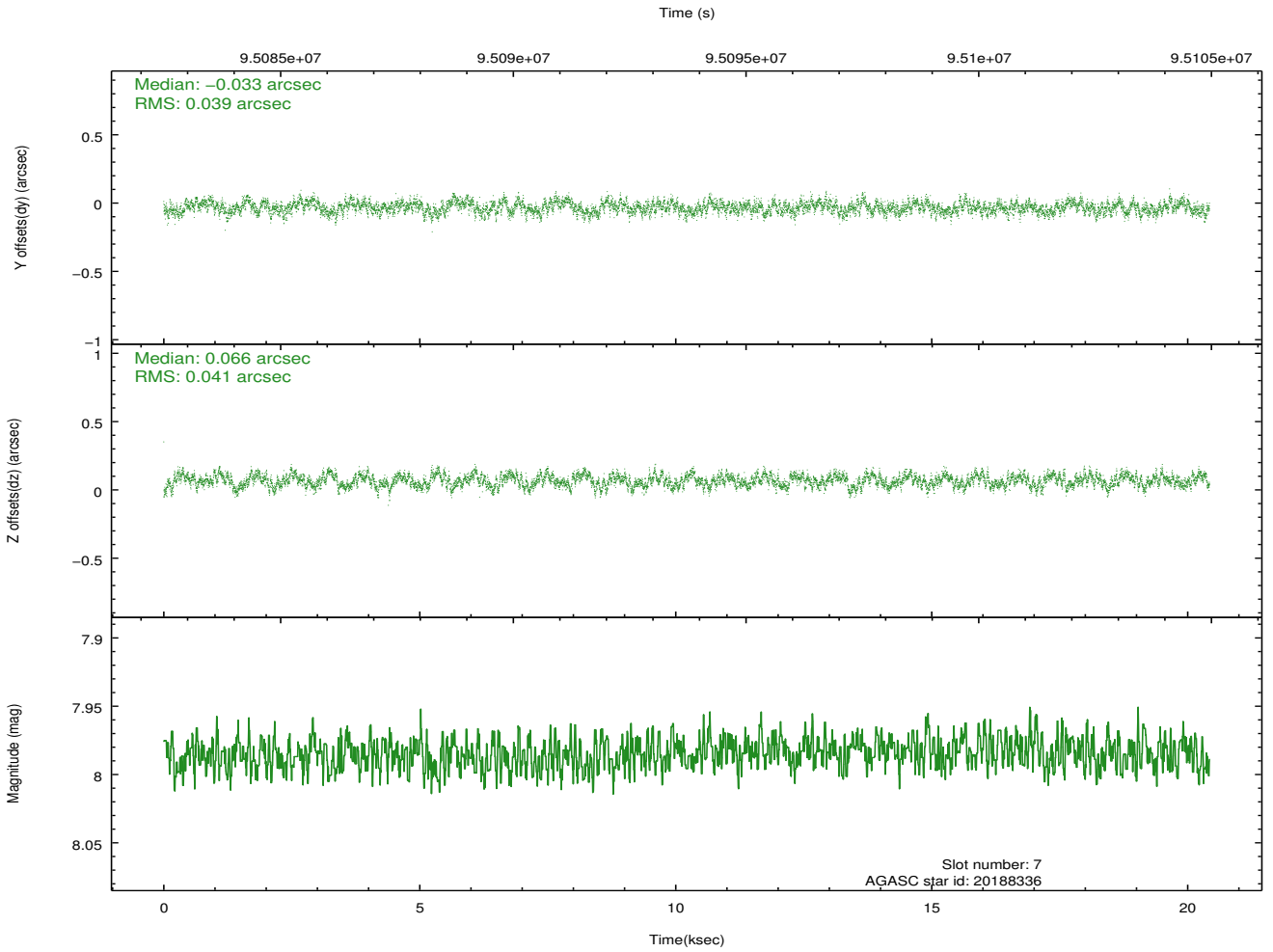
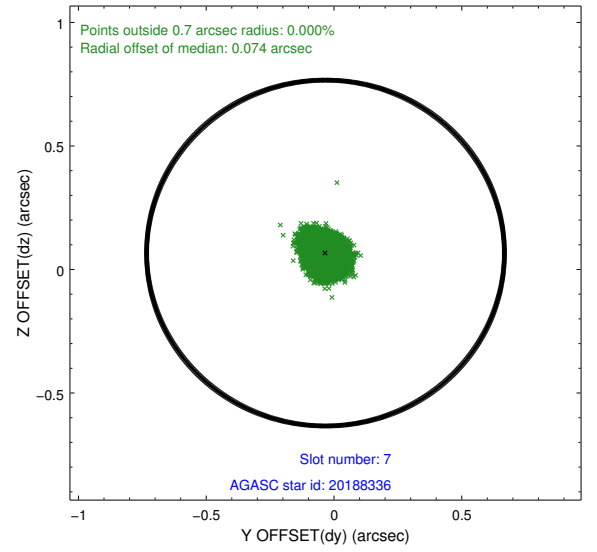
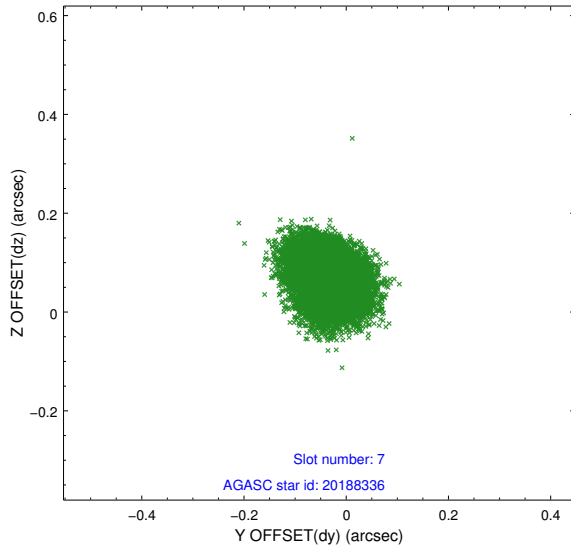
2.4.3 Slot 5



2.4.4 Slot 6

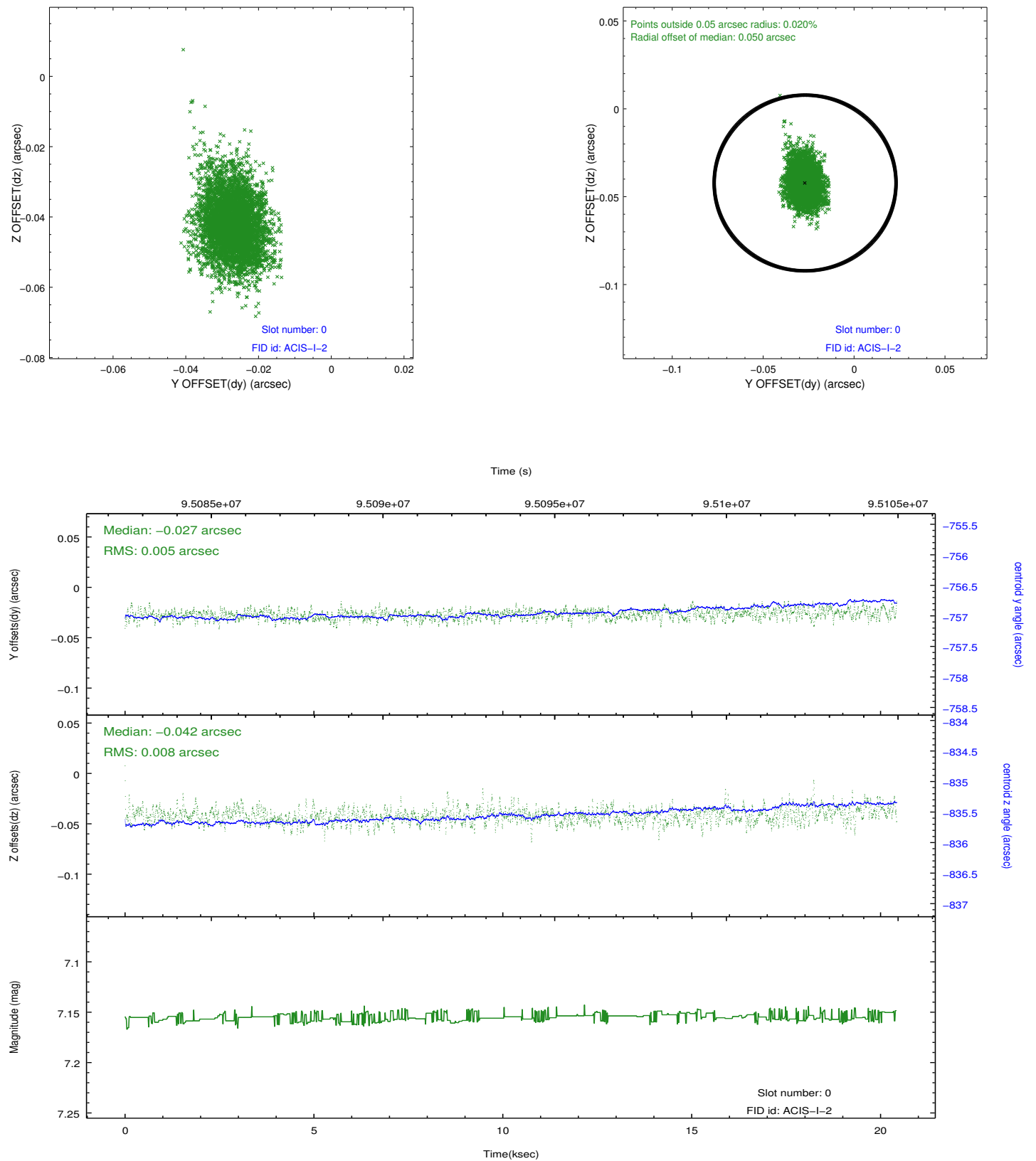


2.4.5 Slot 7

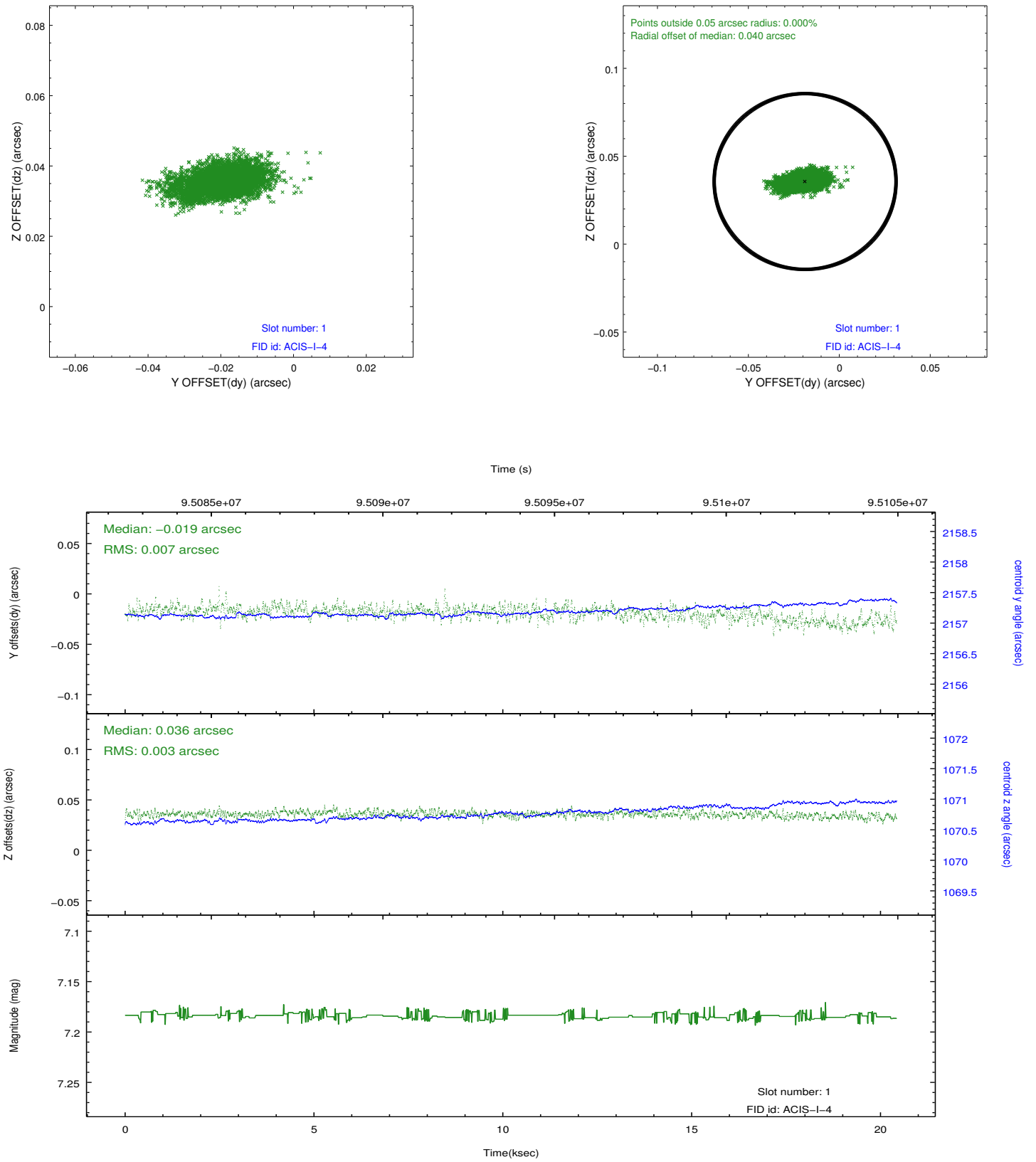


2.5 FID Slots

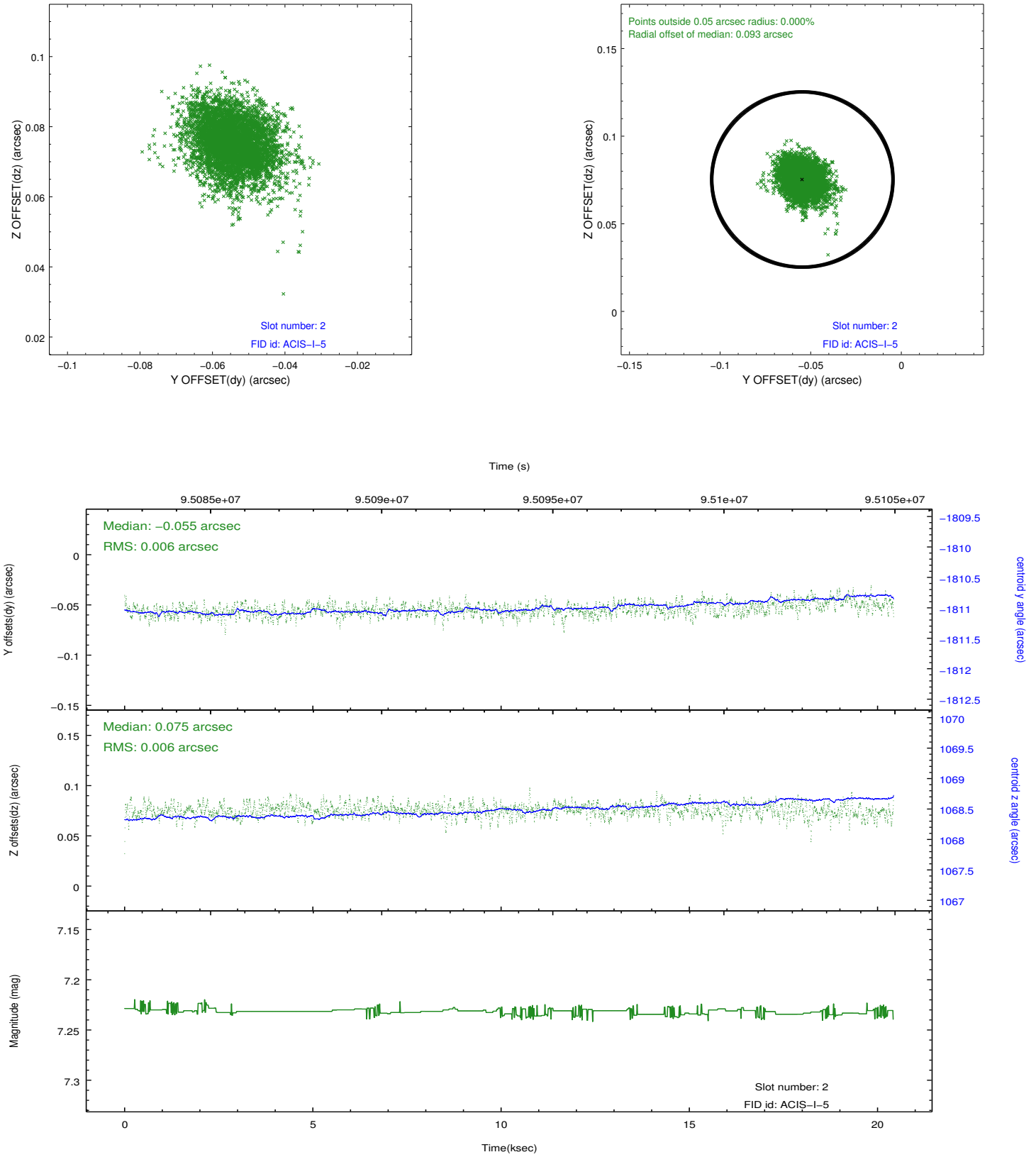
2.5.1 Slot 0



2.5.2 Slot 1



2.5.3 Slot 2



A Summary

A.1 Status

V&V Scientist	Jen Lauer
V&V Date (YYYY-MM-DD)	2012.09.14
V&V Edition	1
V&V Disposition and Status	OK
V&V Charge Time	19.958

A.2 Comments