

V&V Reference Report

L2 ASCDS Version : 10.4.2.1

Observation 18424 - L2 Version 1
Chandra X-Ray Center

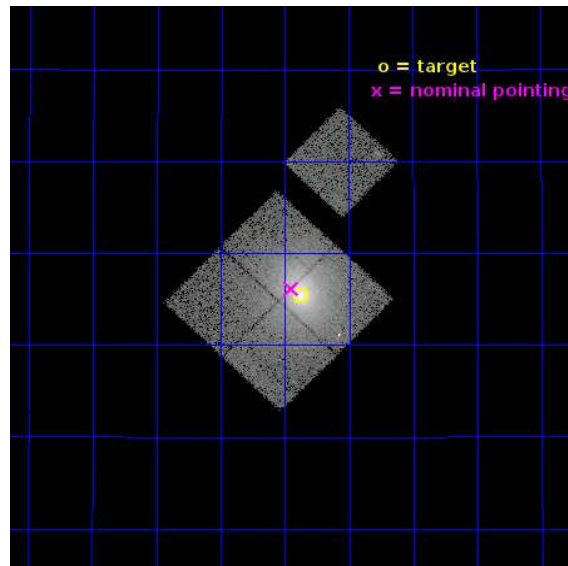
L2 Processing Date : Dec 3 2015

Contents

1	Front	2
2	OBI	3
2.1	OBI	3
2.1.1	Images	3
2.1.2	Bias	3
2.1.3	Parameters	4
2.1.4	Events	4
2.2	Compared Parameters	5
2.3	Aspect	6
2.4	Star Slots	9
2.4.1	Slot 3	9
2.4.2	Slot 4	10
2.4.3	Slot 5	11
2.4.4	Slot 6	12
2.4.5	Slot 7	13
2.5	FID Slots	14
2.5.1	Slot 0	14
2.5.2	Slot 1	15
2.5.3	Slot 2	16
A	Summary	17
A.1	Status	17
A.2	Comments	17

1 Front

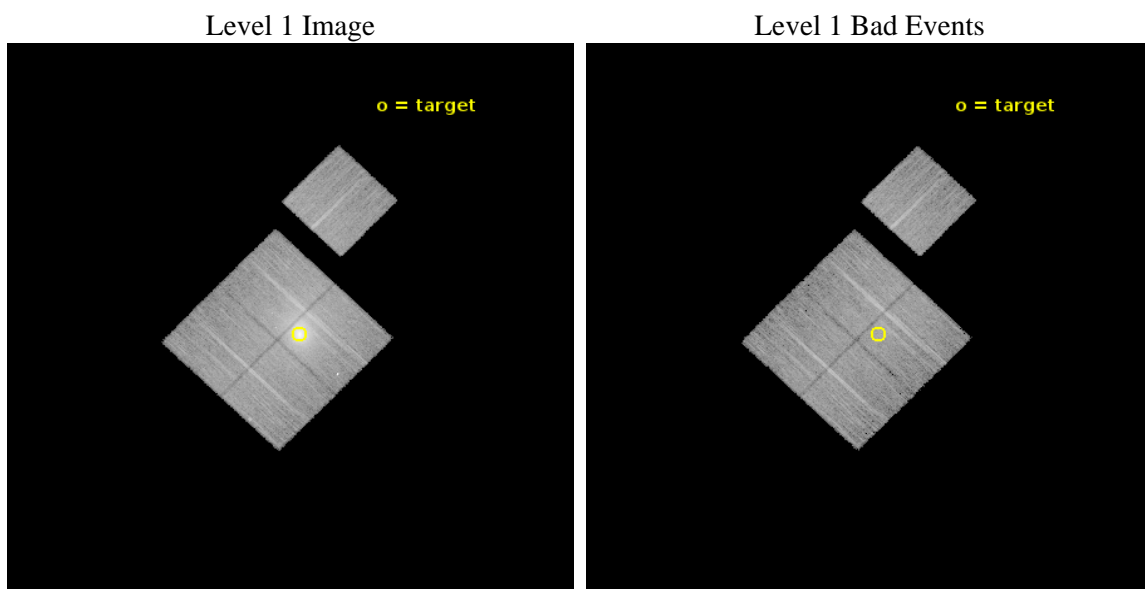
seq_num	890117	Sequence number
obs_id	18424	Observation id
title	Post Heater Turn-On Calibration Observations of A1795	Proposal tit
observer	Dr. CXC Calibration	Principal investigator
object	A1795	Source name
dtcycle	0	
cycle	P	events from which exps? Prim/Second/Both
ra_targ	207.219583	Observer's specified target RA [deg]
dec_targ	26.590833	Observer's specified target Dec [deg]
ra_nom	207.23760159867	Nominal RA [deg]
dec_nom	26.602742526675	Nominal Dec [deg]
roll_nom	44.045322917324	Nominal Roll [deg]
revision	1	Processing version of data
ontime	15551.286928892	Sum of GTIs [s]
livetime	15348.097916475	Livetime [s]
ontime0	15551.163799047	Sum of GTIs [s]
ontime1	15551.204849005	Sum of GTIs [s]
ontime2	15554.386889219	Sum of GTIs [s]
ontime3	15551.286928892	Sum of GTIs [s]
ontime6	15554.26376915	Sum of GTIs [s]
l2events	147035	Number of level 2 events



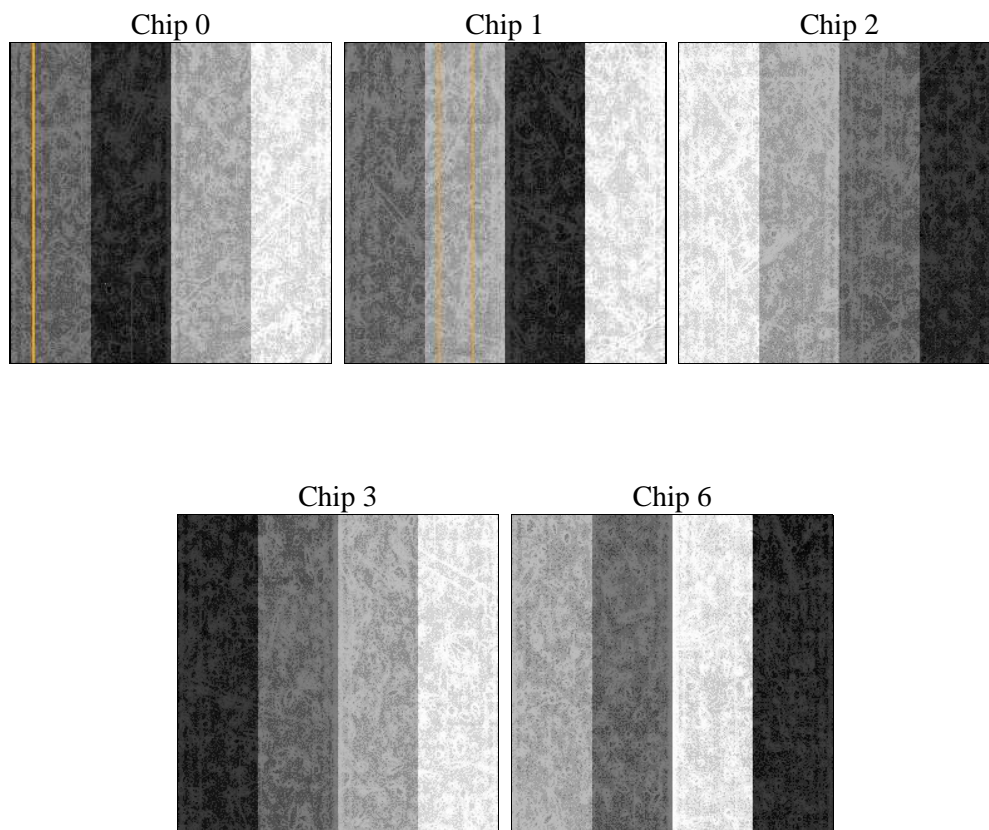
2 OBI

2.1 OBI

2.1.1 Images



2.1.2 Bias



2.1.3 Parameters

obi_num	1	Obi number	sched_exp_time	15500.000000	[s] Scheduled observation exposure time
ascdsver	10.4.2.1	Processing system revision	ontime	15551.286928892	Sum of GTIs [s]
caldsver	4.6.10a	 	ontime0	15551.163799047	Sum of GTIs [s]
date	2015-12-04T00:32:26	Date and time of file creation	ontime1	15551.204849005	Sum of GTIs [s]
revision	1	Processing version of data	ontime2	15554.386889219	Sum of GTIs [s]
			ontime3	15551.286928892	Sum of GTIs [s]
			ontime6	15554.26376915	Sum of GTIs [s]
			l1events	557214	Number of level 1 events

2.1.4 Events

	ccd 0	ccd 1	ccd 2	ccd 3	ccd 6
level 1 events	88605	95063	115901	166416	91229
rejected events	74716	75328	84710	83177	80462
rejected %	84%	79%	73%	49%	88%

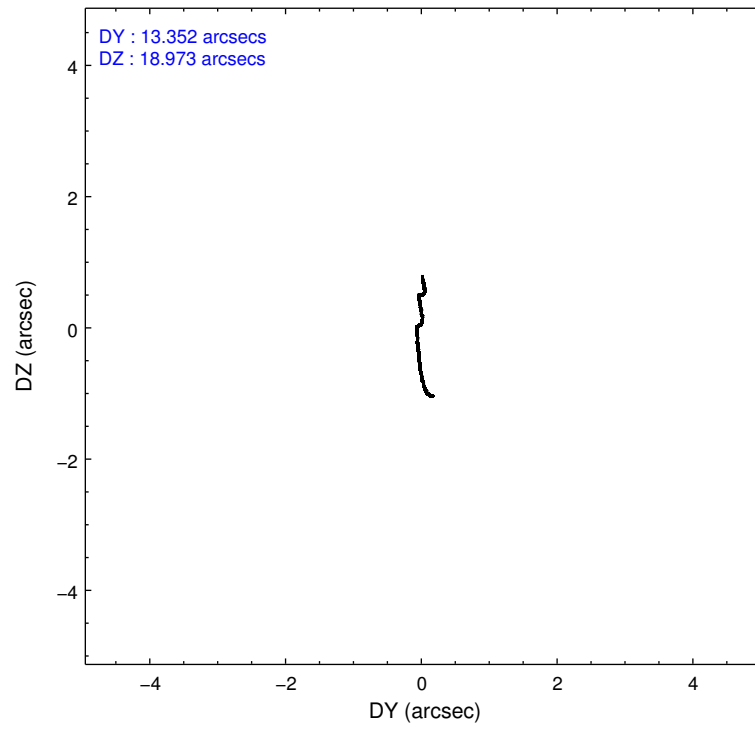
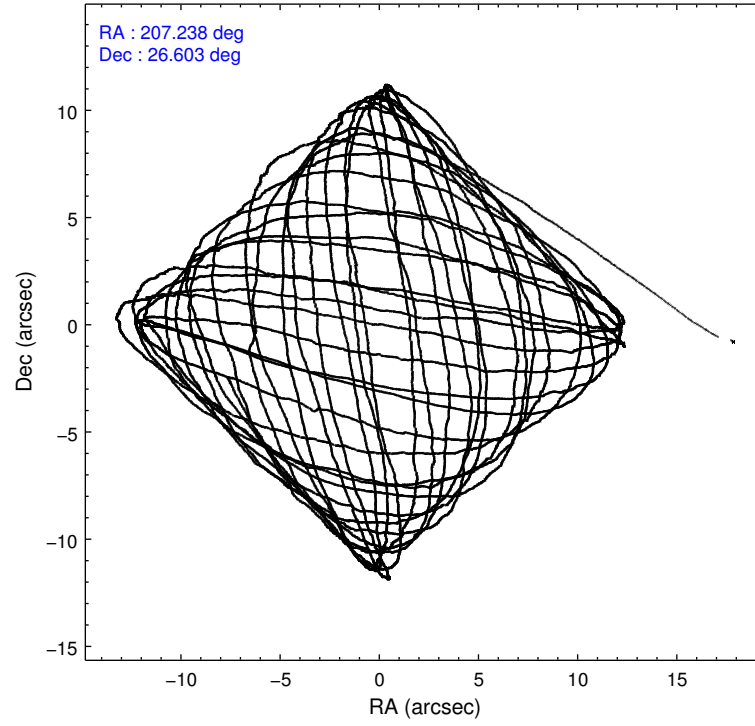
	ccd 0	ccd 1	ccd 2	ccd 3	ccd 6
grade 0 events	6416	10064	21062	63739	3658
	7%	10%	18%	38%	4%
grade 1 events	59	51	130	339	29
	0%	0%	0%	0%	0%
grade 2 events	2922	4254	4333	9278	2505
	3%	4%	3%	5%	2%
grade 3 events	1201	1263	1613	3117	1033
	1%	1%	1%	1%	1%
grade 4 events	1114	1353	1588	3208	1028
	1%	1%	1%	1%	1%
grade 5 events	3861	4036	3658	4666	4086
	4%	4%	3%	2%	4%
grade 6 events	2245	2814	2605	3935	2550
	2%	2%	2%	2%	2%
grade 7 events	70787	71228	80912	78134	76340
	79%	74%	69%	46%	83%

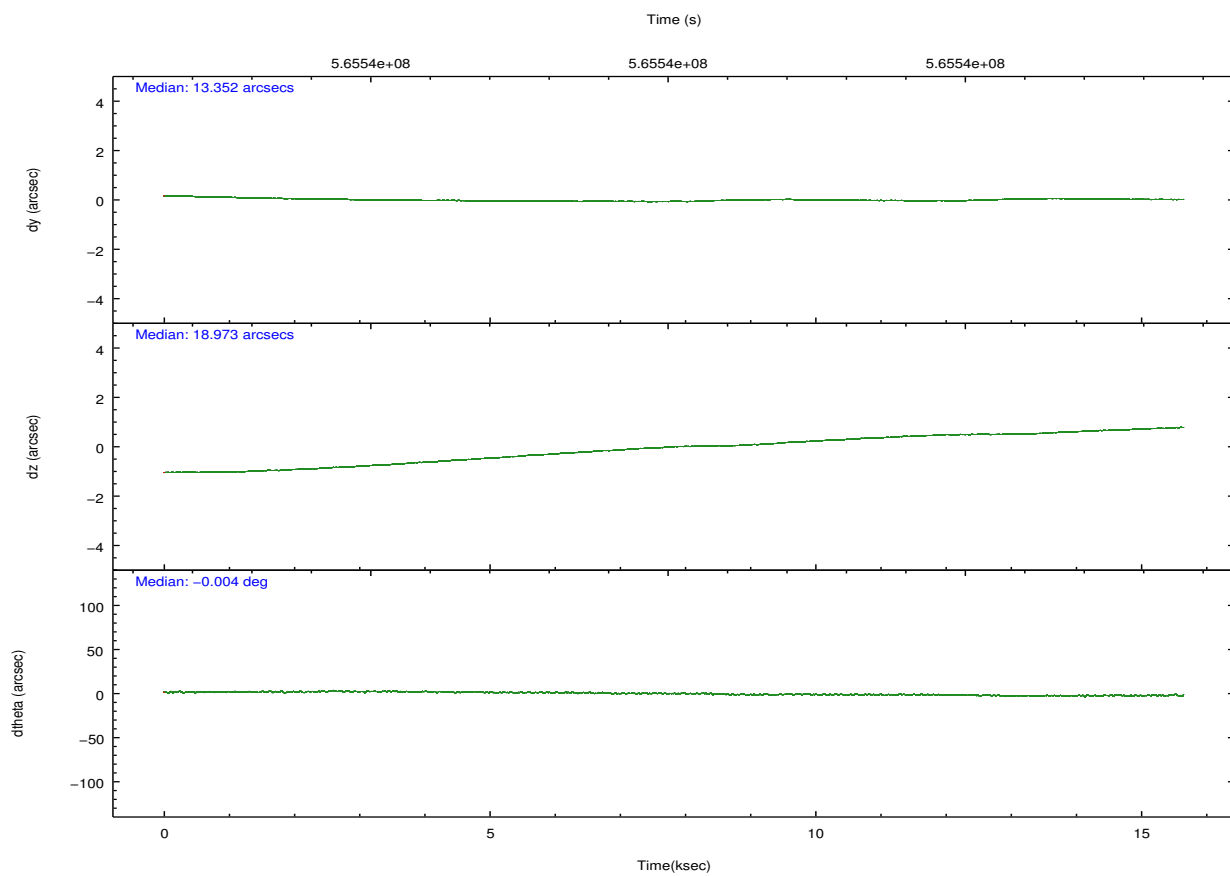
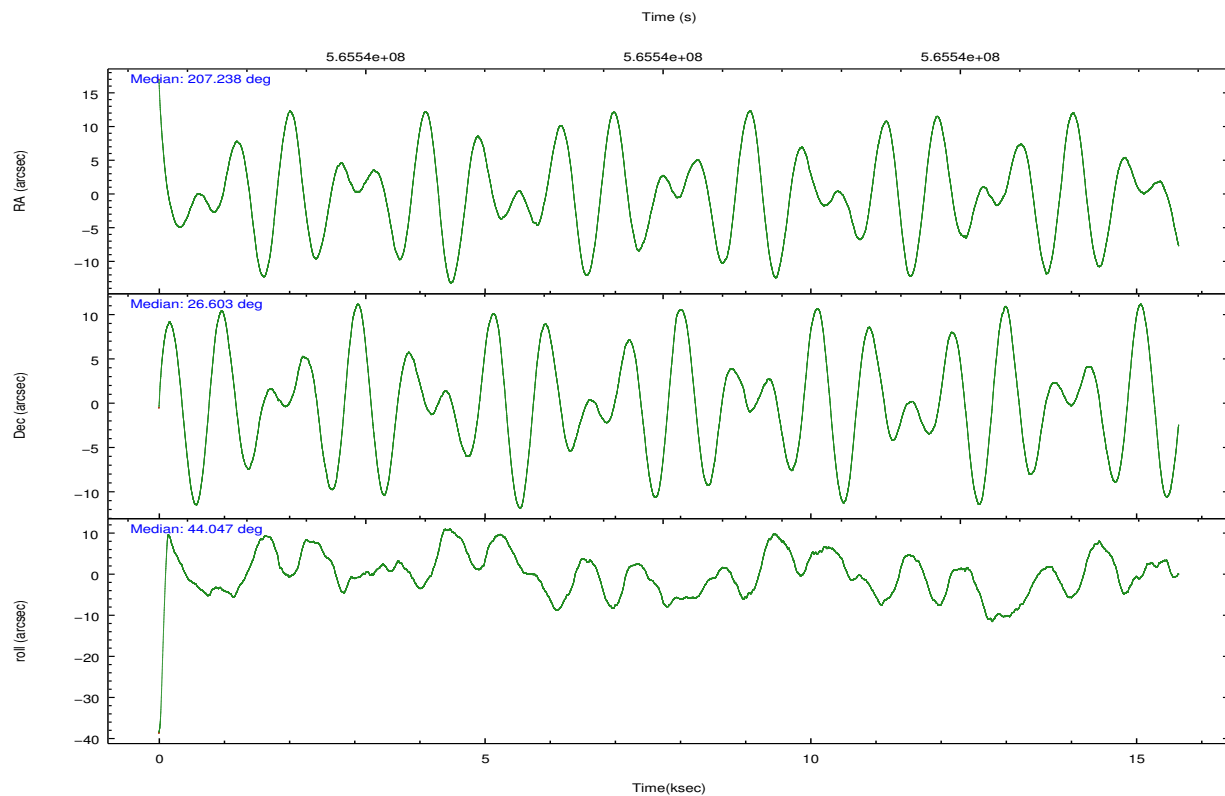
2.2 Compared Parameters

Parameter	Planned	Actual
Instrument	ACIS	ACIS
Detector	ACIS-01236	ACIS-01236
Grating	NONE	NONE
Data mode	VFAINT	VFAINT
Observation mode	POINTING	POINTING
[deg] Pointing RA	207.229222	207.2376015986656
[deg] Pointing Dec	26.576189	26.60274252667457
[deg] Pointing Roll	43.840423	44.04532291732368
[s] Window start time (MET)	563587268.184000	563587268.184000
[s] Window stop time (MET)	566179268.184000	566179268.184000
[mm] SIM focus pos	-0.782348	-0.7809083437167272
[mm] SIM defocus	0	0.001439871863259334
[mm] SIM translation stage pos	-230.252463	-230.248423740357
[mm] SIM translation stage offset	-3.34	-3.34402926257269
[s] Observation start time (MET)	565532434.184000	565531295.7127301
Observation start date	2015-12-03T12:19:26	2015-12-03T12:01:35
[s] Observation end time (MET)	565547934.184000	565548827.31372
Observation end date	2015-12-03T16:37:46	2015-12-03T16:53:47
Read mode	TIMED	TIMED

Parameter	Planned	Actual
Obspar format version number	7	7
Obspar file type	PREDICTED	ACTUAL
Obspar update status	NONE	UPDATED
Number of optional ACIS chips dropped	0	0
On-chip summing requested	N	N
Subarray requested	NONE	NONE
Alternating exposures requested	N	N
[s] Primary exposure time	0.000000	3.1

2.3 Aspect



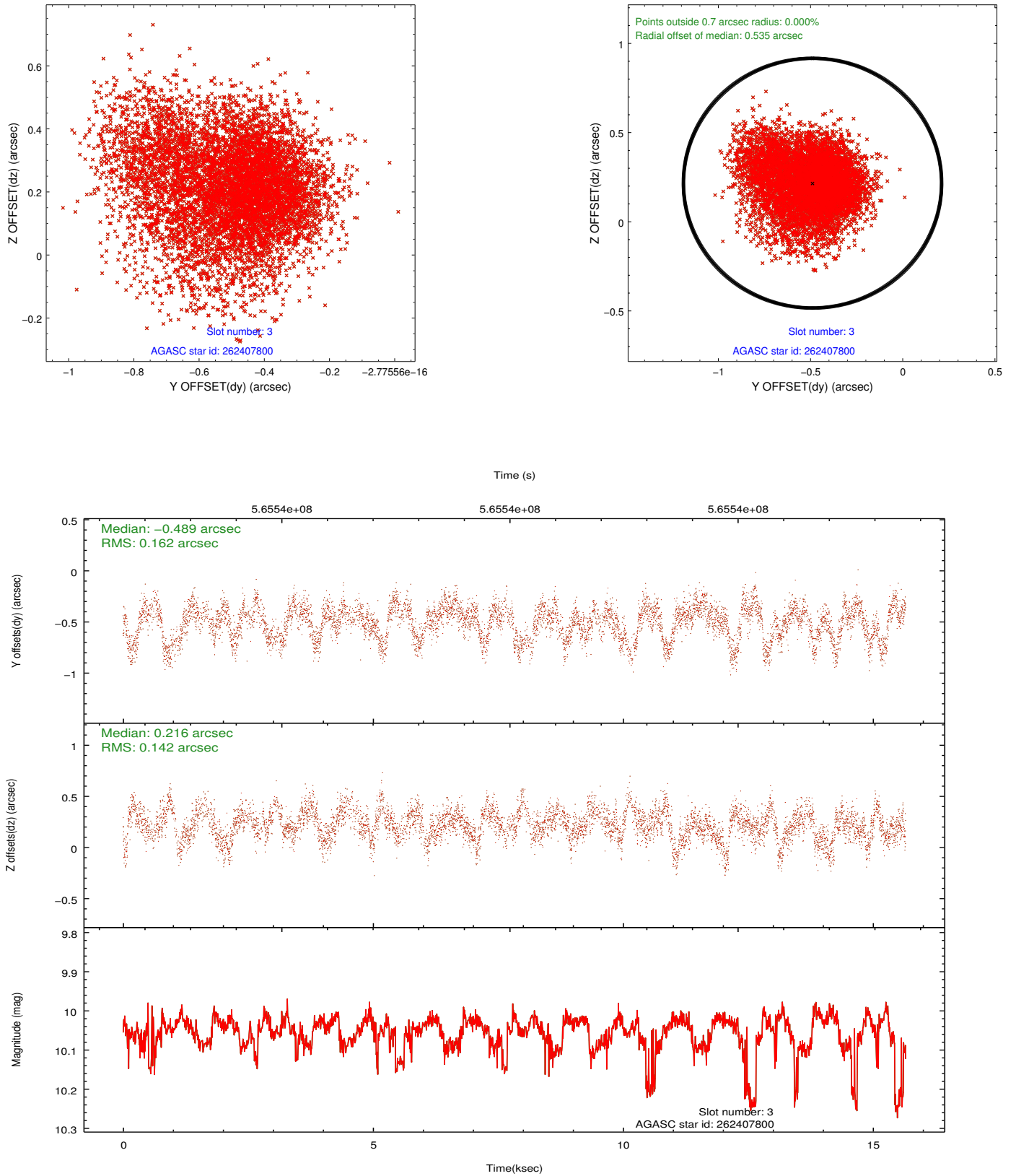


Slot Statistics

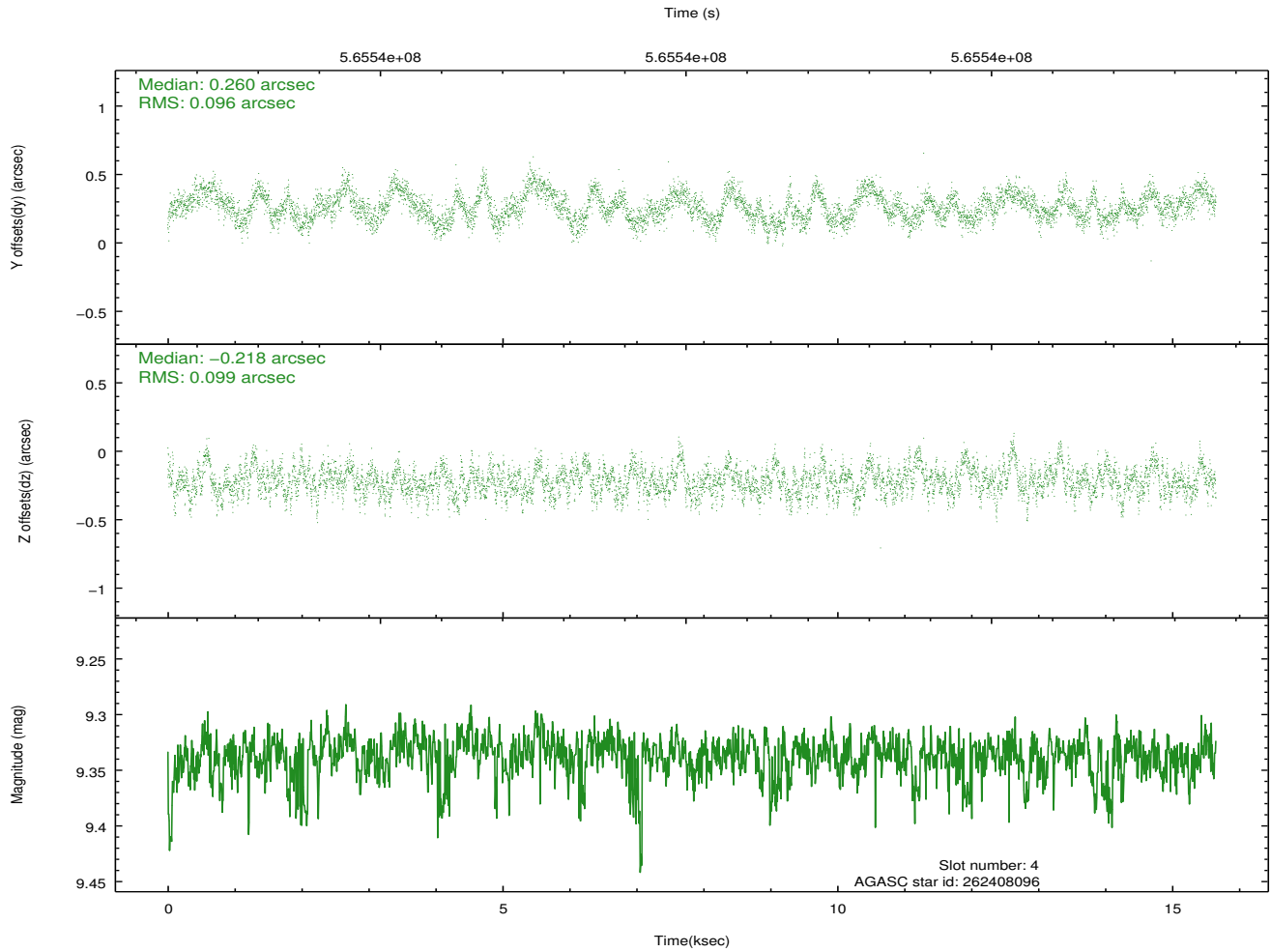
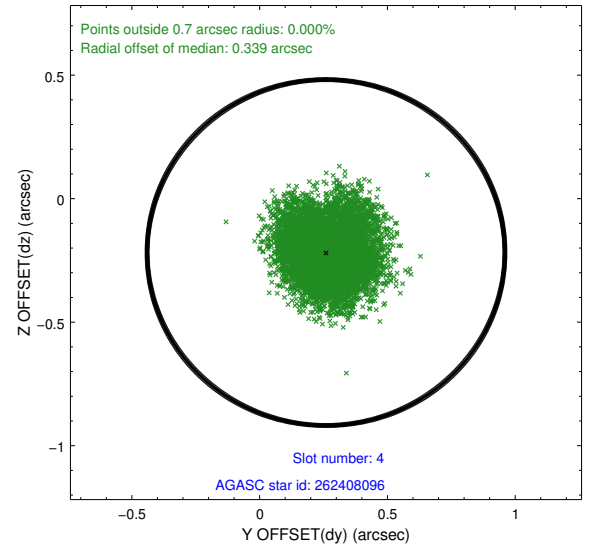
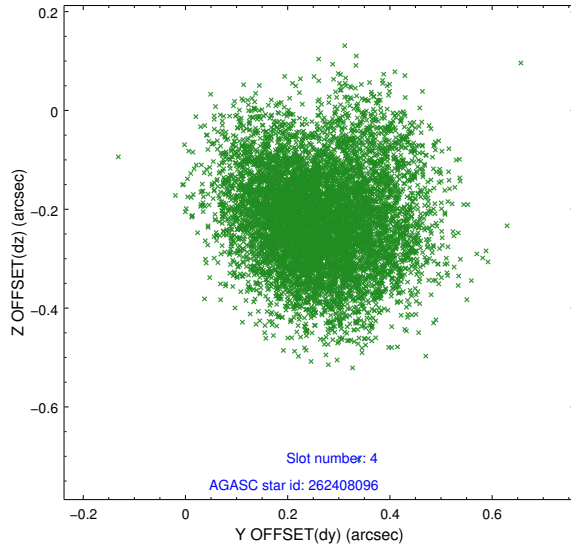
lot	status	used	id	mag	n_pts	med_dy	med_dz	drl	dr2	ra	dec	mean_y	mean_x
0	FID		ACIS-I-1	7.26	3818	0.106	-0.059	0.029	0.049	0.000000	0.000000	926.22	-911.20
1	FID		ACIS-I-5	7.25	3818	-0.337	0.072	0.011	0.017	0.000000	0.000000	-1822.24	986.17
2	FID		ACIS-I-6	7.26	3818	0.138	0.060	0.019	0.039	0.000000	0.000000	391.40	1631.07
3	BAD	used	262407800	10.05	6976	-0.489	0.216	0.230	0.381	207.321181	27.251762	1894.56	1551.79
4	GUIDE	used	262408096	9.34	7632	0.260	-0.218	0.149	0.236	207.011678	26.515421	-655.79	328.78
5	GUIDE	used	262408936	9.65	7628	-0.087	-0.255	0.145	0.244	207.154731	26.726554	202.65	556.02
6	GUIDE	used	262409624	10.01	7502	0.071	-0.325	0.232	0.375	207.610037	27.074851	2125.68	450.62
7	GUIDE	used	262411960	9.62	7629	0.238	0.590	0.210	0.323	207.327895	25.881727	-1500.15	-2023.65

2.4 Star Slots

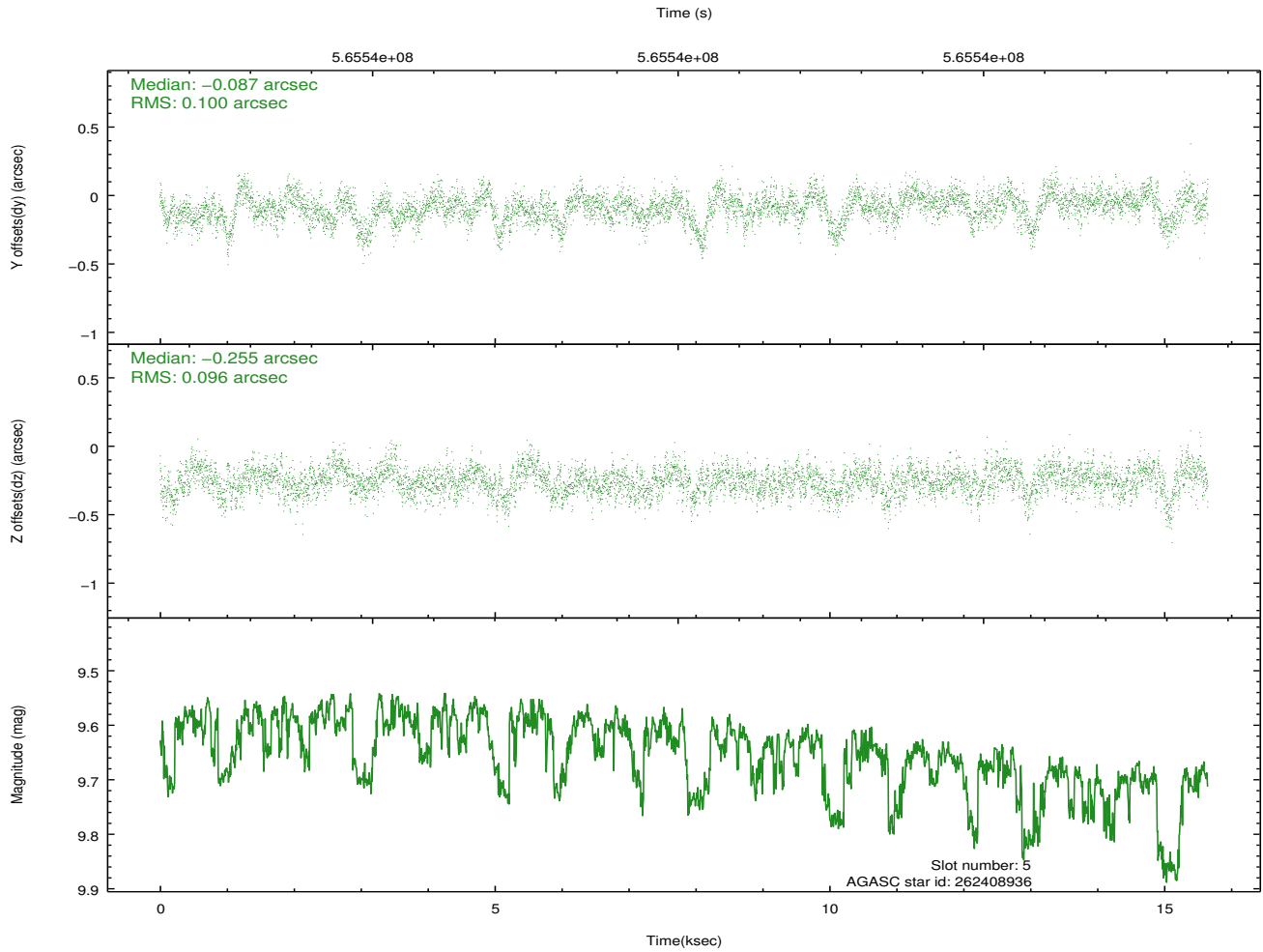
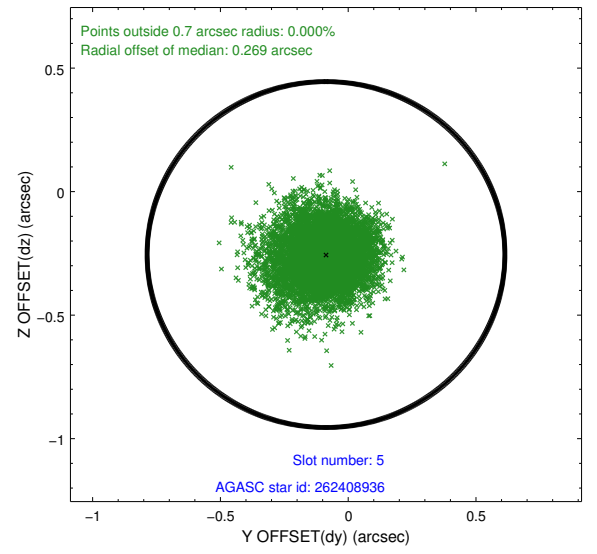
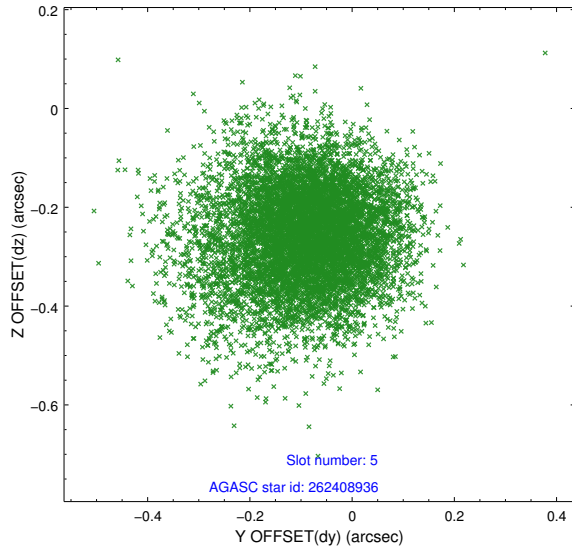
2.4.1 Slot 3



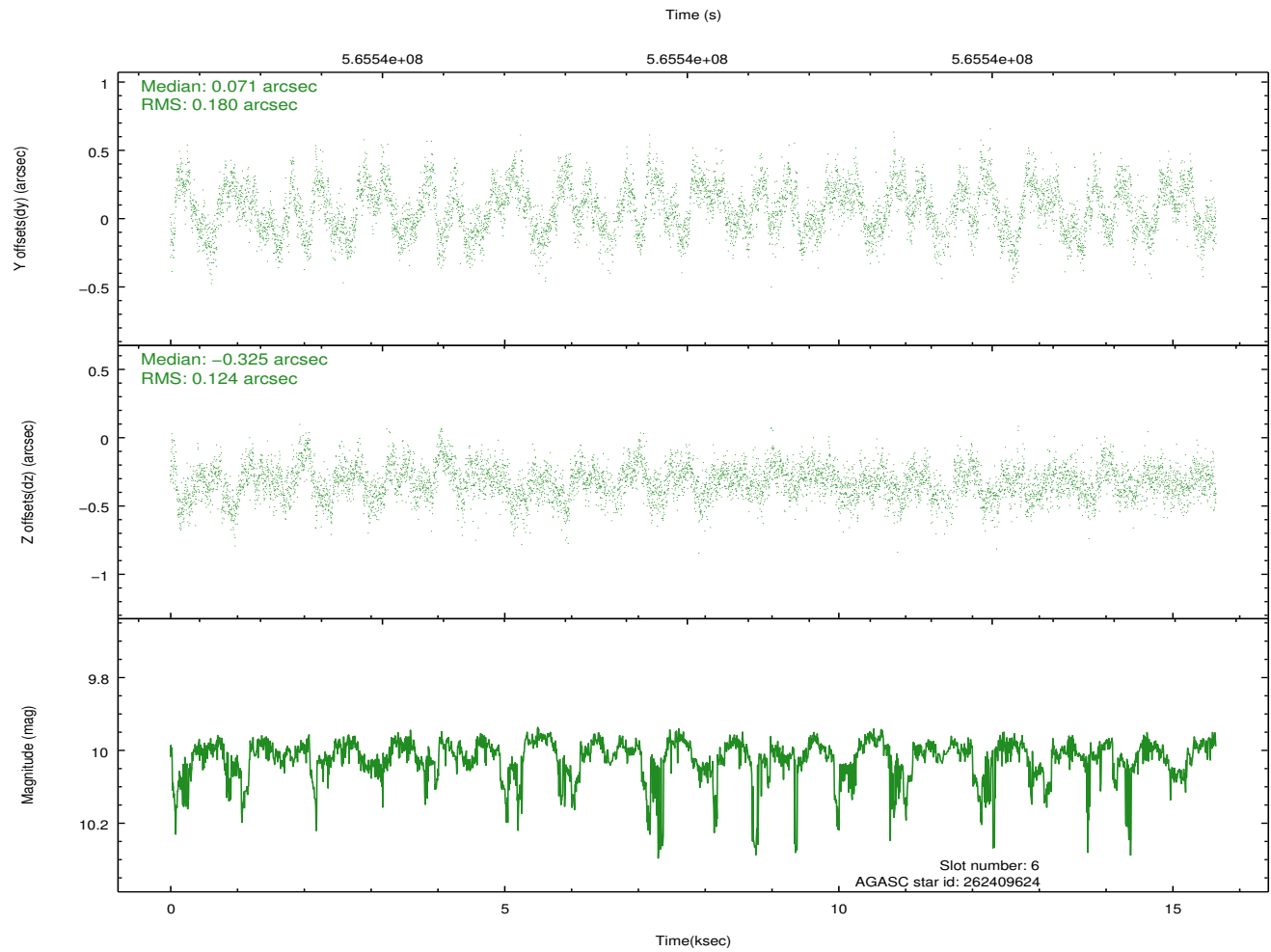
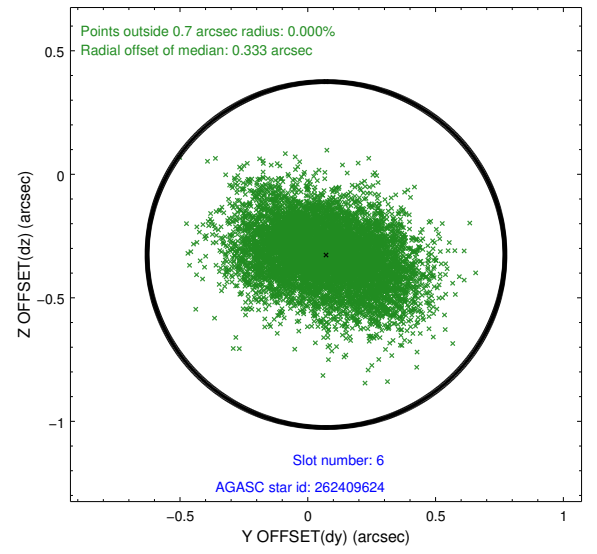
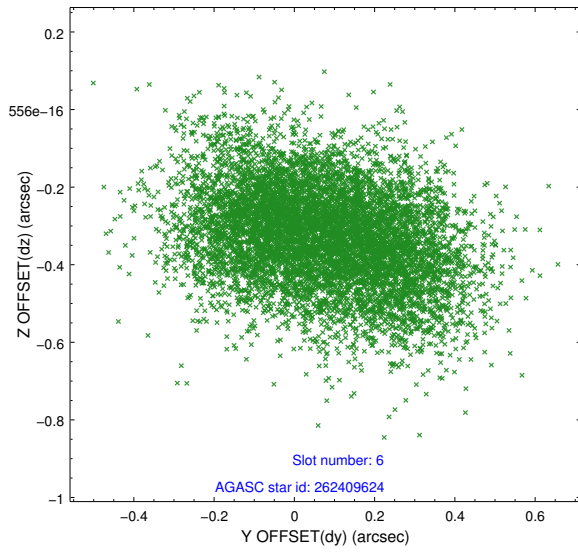
2.4.2 Slot 4



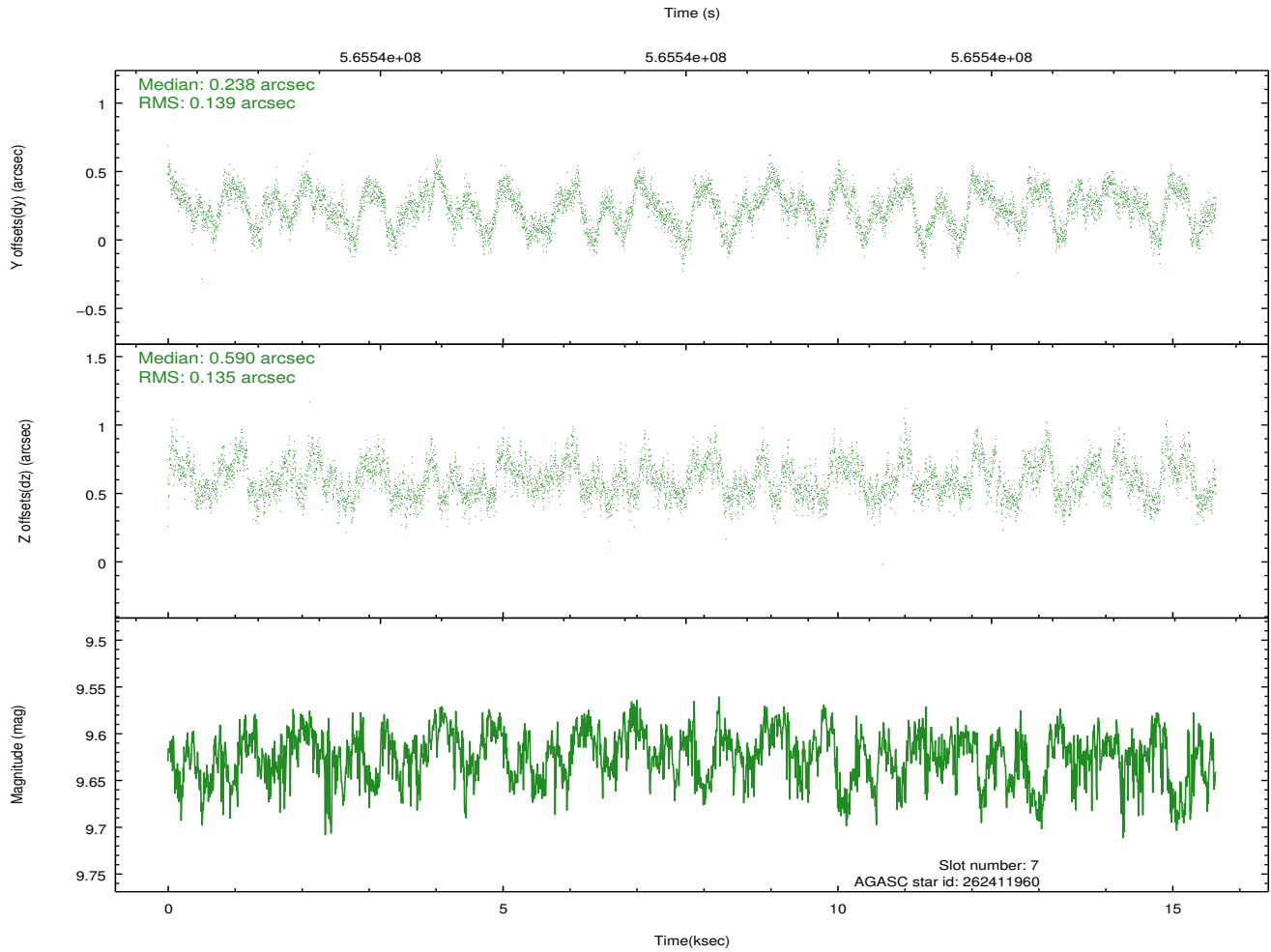
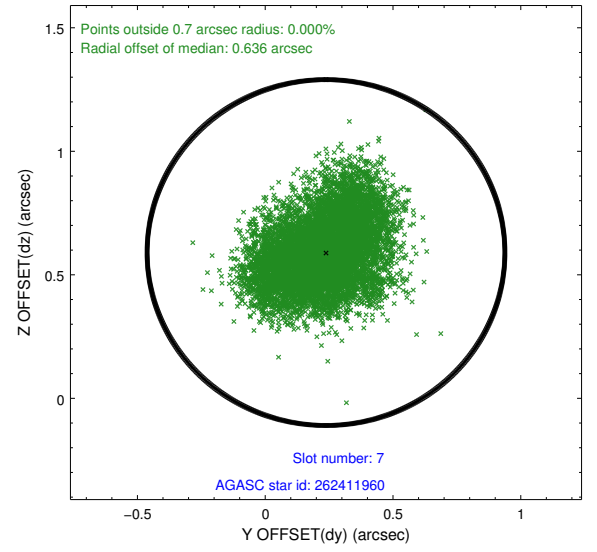
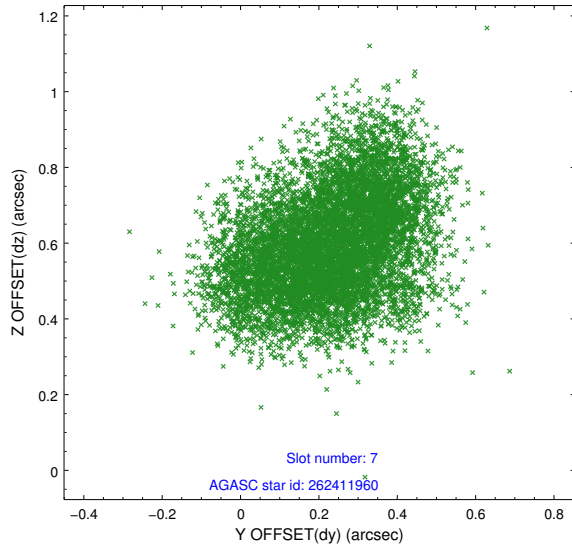
2.4.3 Slot 5



2.4.4 Slot 6

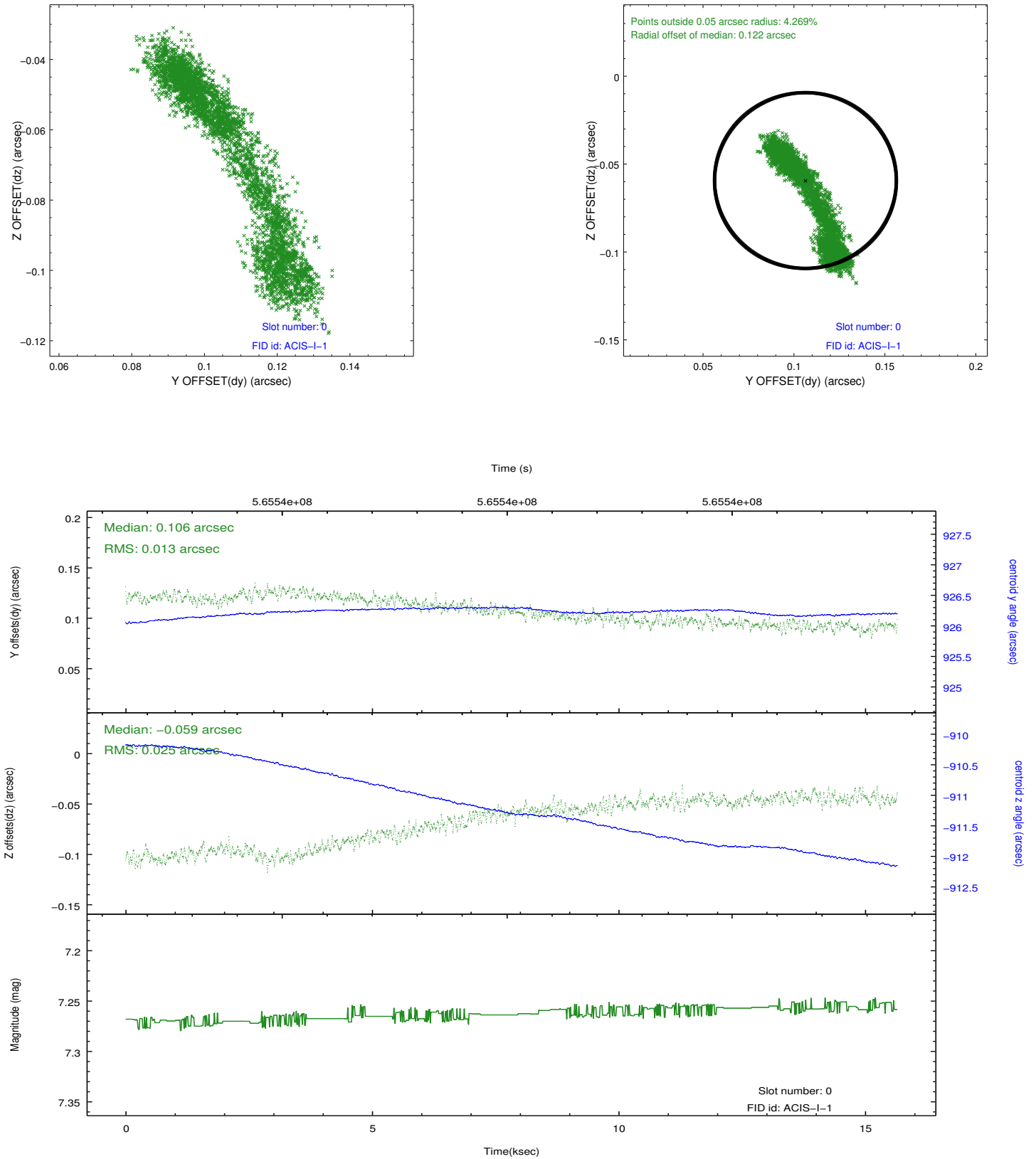


2.4.5 Slot 7

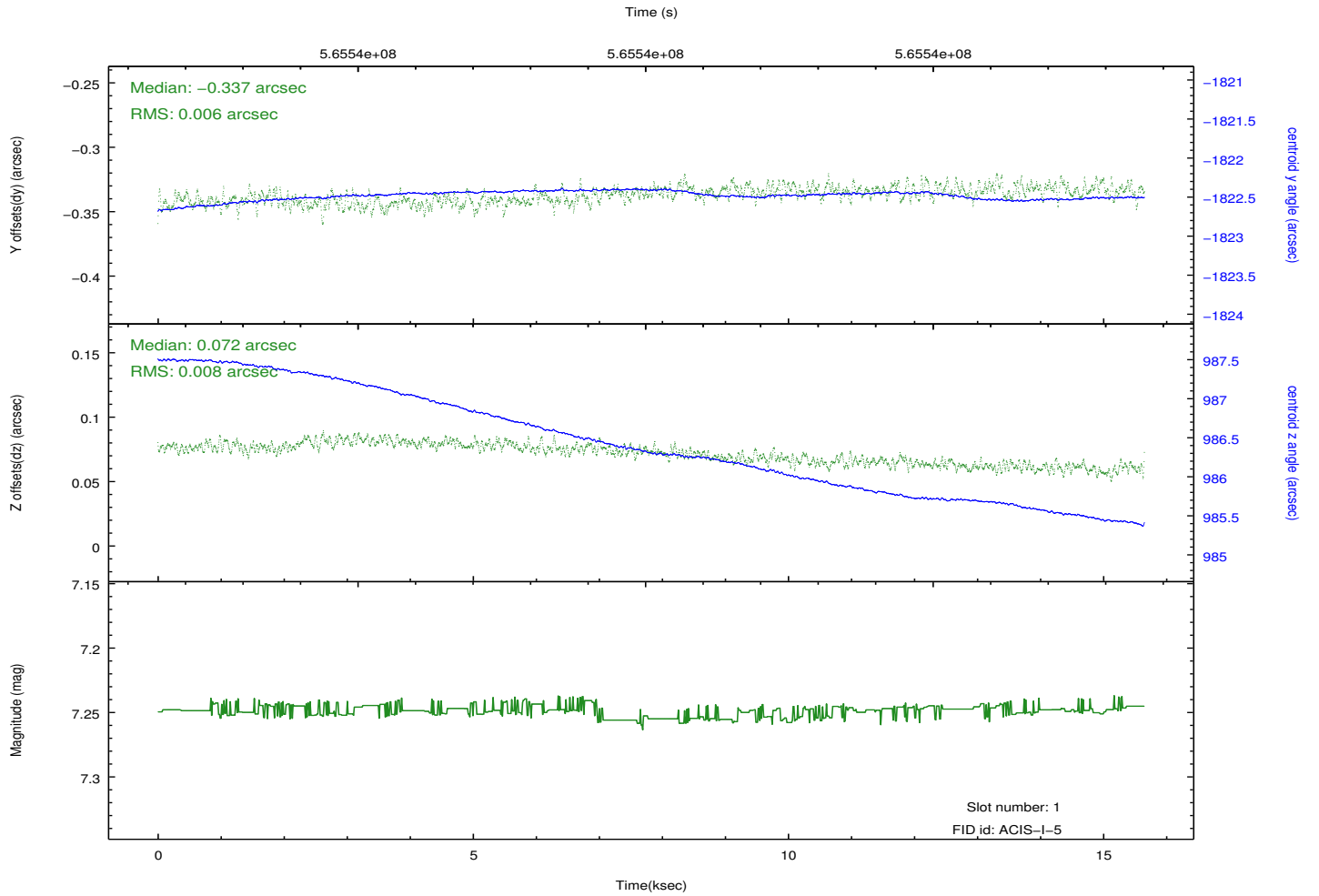
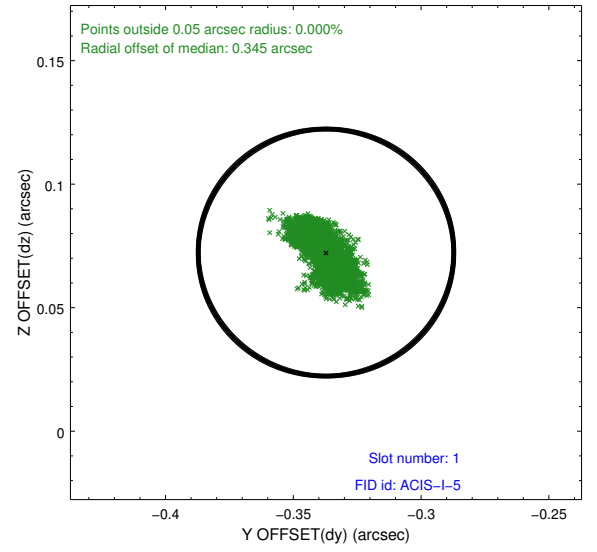
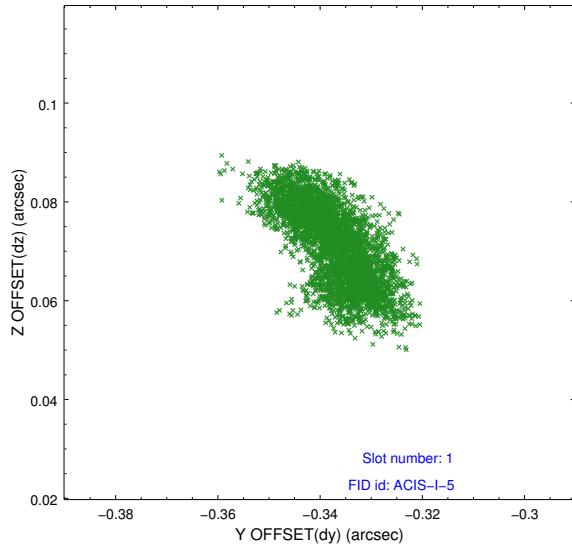


2.5 FID Slots

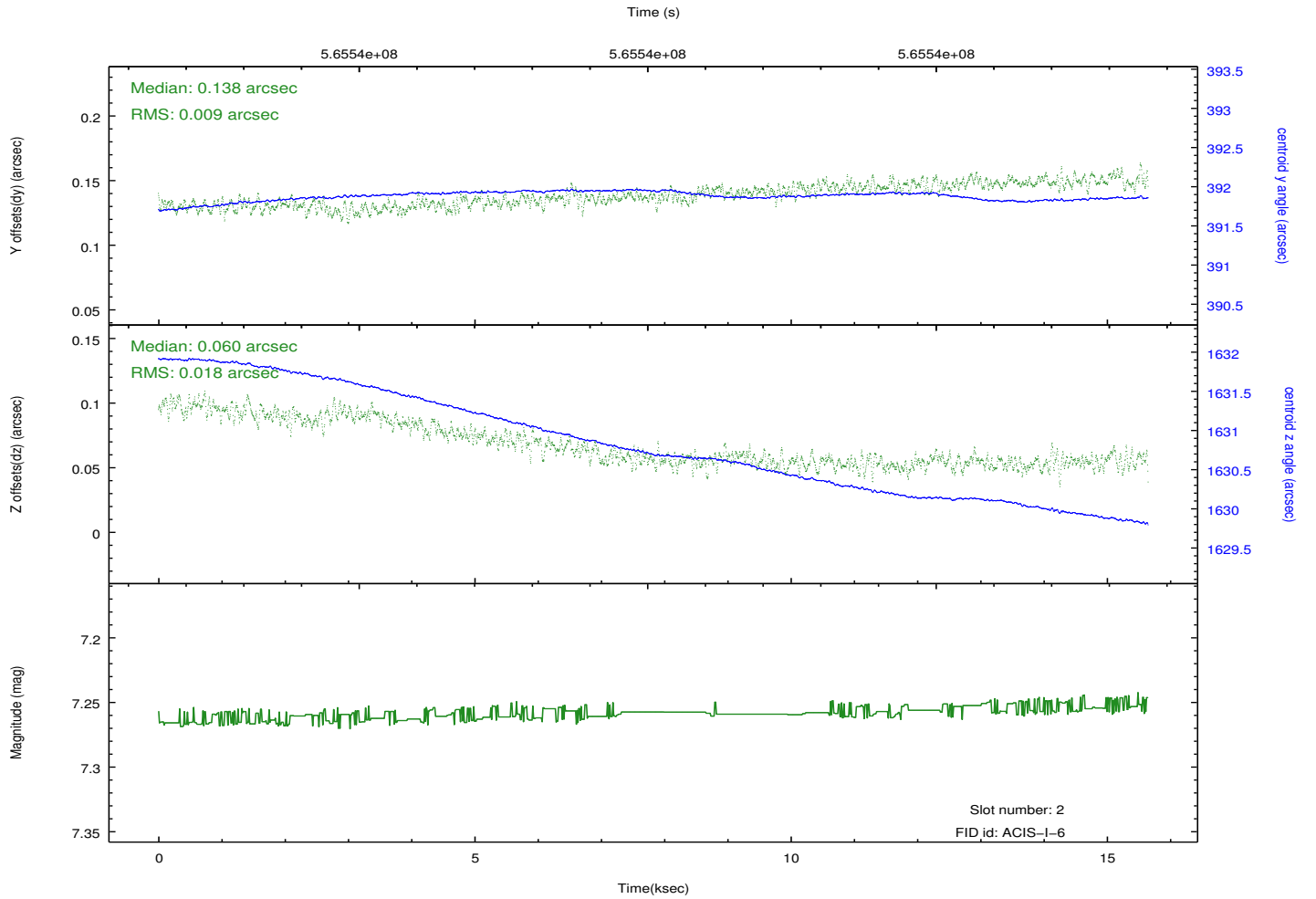
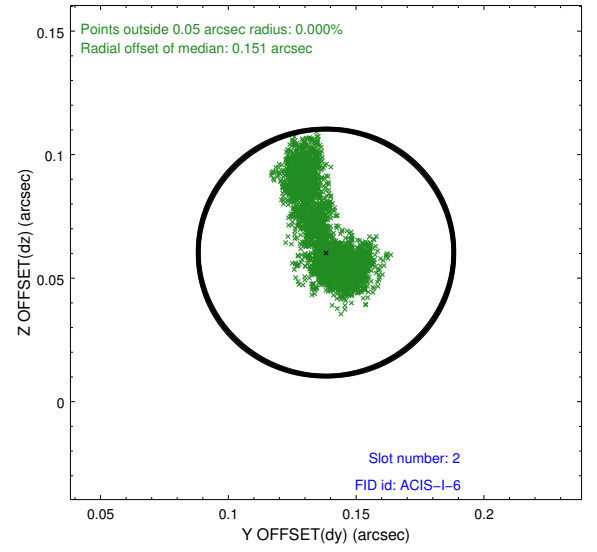
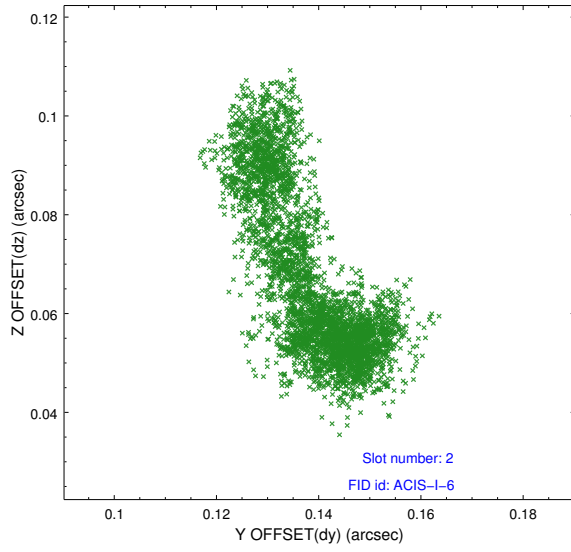
2.5.1 Slot 0



2.5.2 Slot 1



2.5.3 Slot 2



A Summary

A.1 Status

V&V Scientist	Joy Nichols
V&V Date (YYYY-MM-DD)	2015.12.04
V&V Edition	1
V&V Disposition and Status	OK
V&V Charge Time	15.551286928892

A.2 Comments