

# V&V Reference Report

## L2 ASCDS Version : 10.2.4

Observation 16254 - L2 Version 1  
Chandra X-Ray Center

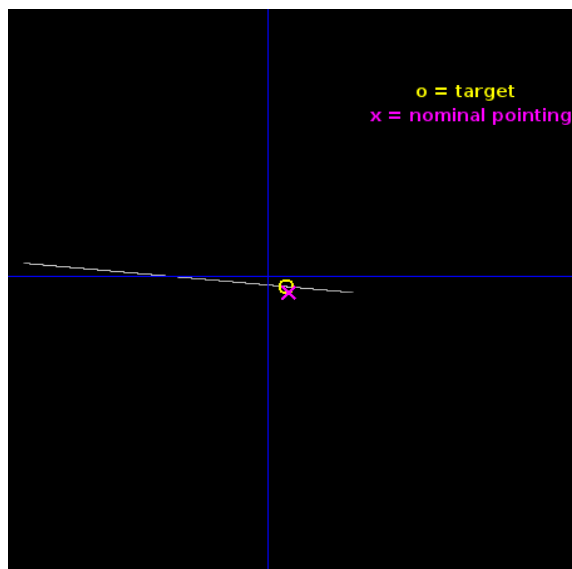
L2 Processing Date : Jul 22 2014

## Contents

<b>1</b>	<b>Front</b>	<b>2</b>
<b>2</b>	<b>OBI</b>	<b>3</b>
2.1	OBI . . . . .	3
2.1.1	Images . . . . .	3
2.1.2	Bias . . . . .	3
2.1.3	Parameters . . . . .	4
2.1.4	Events . . . . .	4
2.2	Compared Parameters . . . . .	5
2.3	Aspect . . . . .	6
2.4	Star Slots . . . . .	9
2.4.1	Slot 3 . . . . .	9
2.4.2	Slot 4 . . . . .	10
2.4.3	Slot 5 . . . . .	11
2.4.4	Slot 6 . . . . .	12
2.4.5	Slot 7 . . . . .	13
2.5	FID Slots . . . . .	14
2.5.1	Slot 0 . . . . .	14
2.5.2	Slot 1 . . . . .	15
2.5.3	Slot 2 . . . . .	16
<b>A</b>	<b>Summary</b>	<b>17</b>
A.1	Status . . . . .	17
A.2	Comments . . . . .	17

# 1 Front

seq_num	502248	Sequence number
obs_id	16254	Observation id
title	A Fifteen-Year Ephemeris for the CCO Pulsar in Puppis A	Proposal t
observer	Prof. Jules Halpern	Principal investigator
object	PSR J0821-4300	Source name
ra_targ	125.488858	Observer's specified target RA [deg]
dec_targ	-43.004806	Observer's specified target Dec [deg]
ra_nom	125.4868404685	Nominal RA [deg]
dec_nom	-43.007536783358	Nominal Dec [deg]
roll_nom	185.2685559584	Nominal Roll [deg]
revision	1	Processing version of data
ontime	33148.5	Sum of GTIs [s]
livetime	33019.013671875	Livetime [s]
ontime7	33148.5	Sum of GTIs [s]
l2events	832995	Number of level 2 events

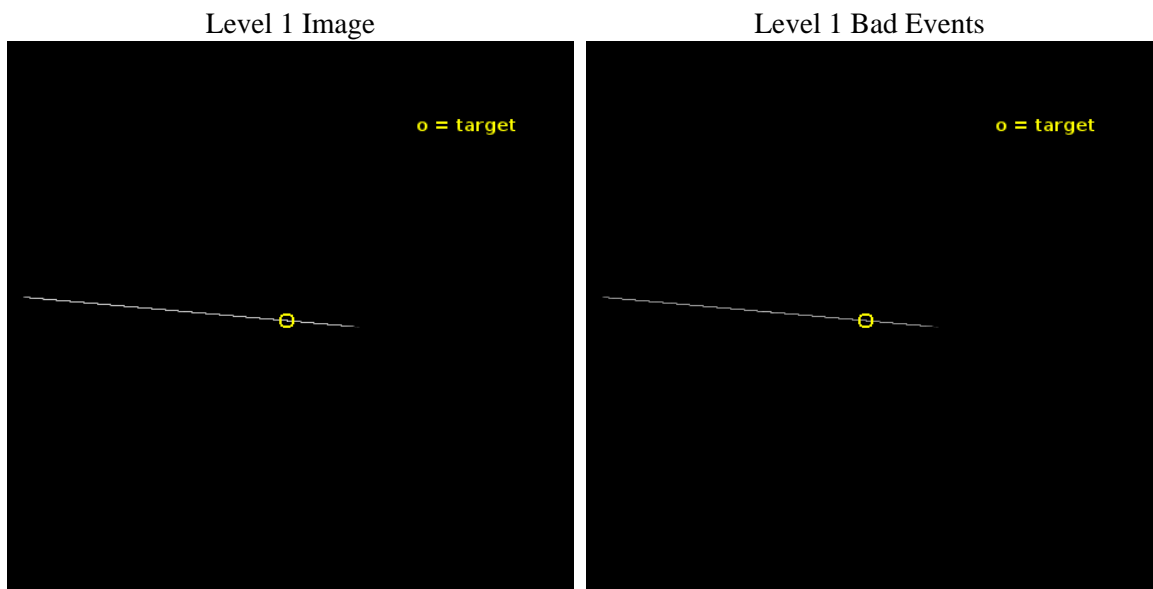




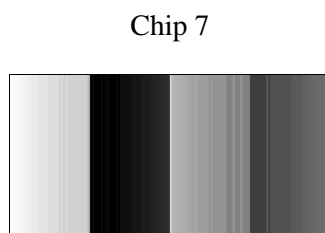
## 2 OBI

### 2.1 OBI

#### 2.1.1 Images



#### 2.1.2 Bias



### 2.1.3 Parameters

obi_num	0	Obi number	sched_exp_time	33000.000000	[s] Scheduled observation exposure time
ascdsver	10.2.4	Processing system revision	ontime	33148.5	Sum of GTIs [s]
caldsver	4.6.2	&#160	ontime7	33148.5	Sum of GTIs [s]
date	2014-07-22T06:56:21	Date and time of file creation	l1events	1084520	Number of level 1 events
revision	1	Processing version of data			

### 2.1.4 Events

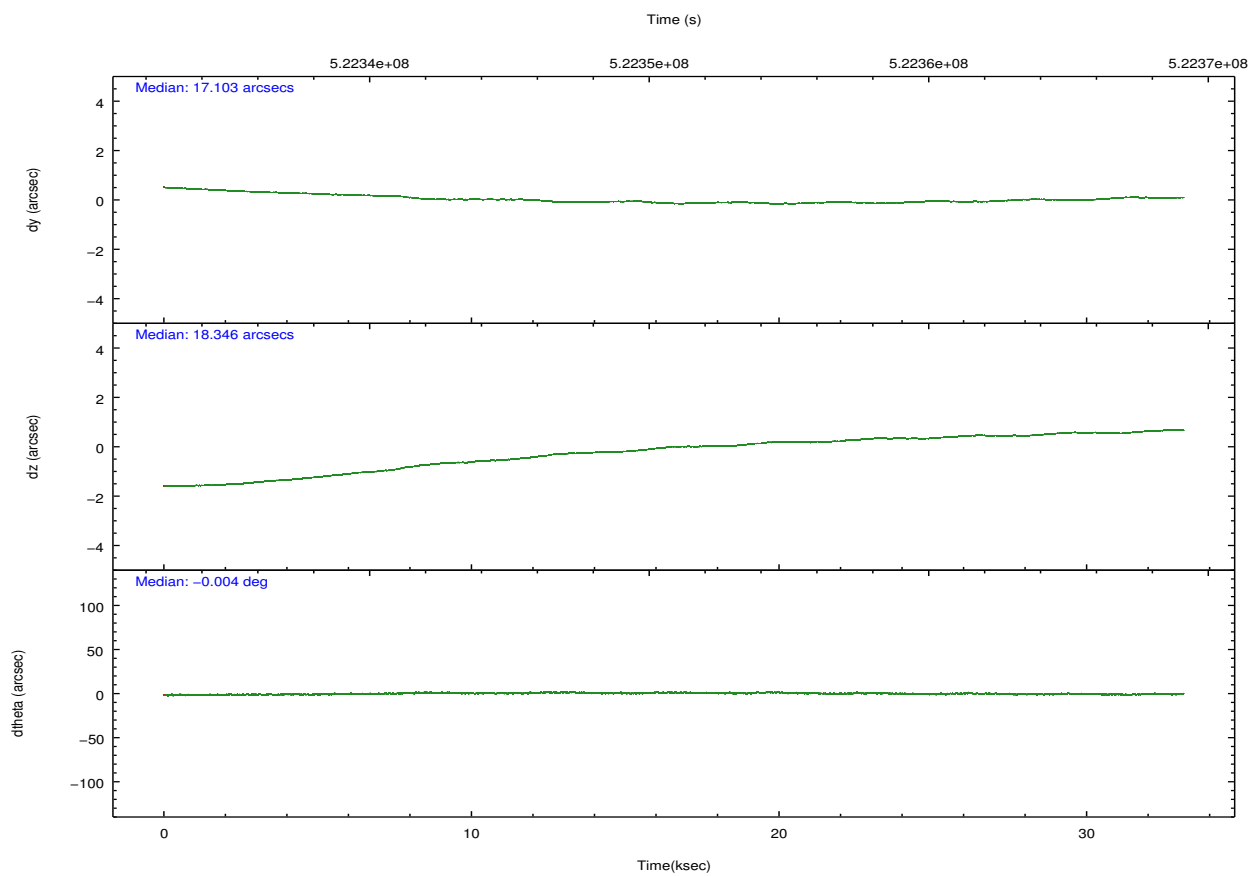
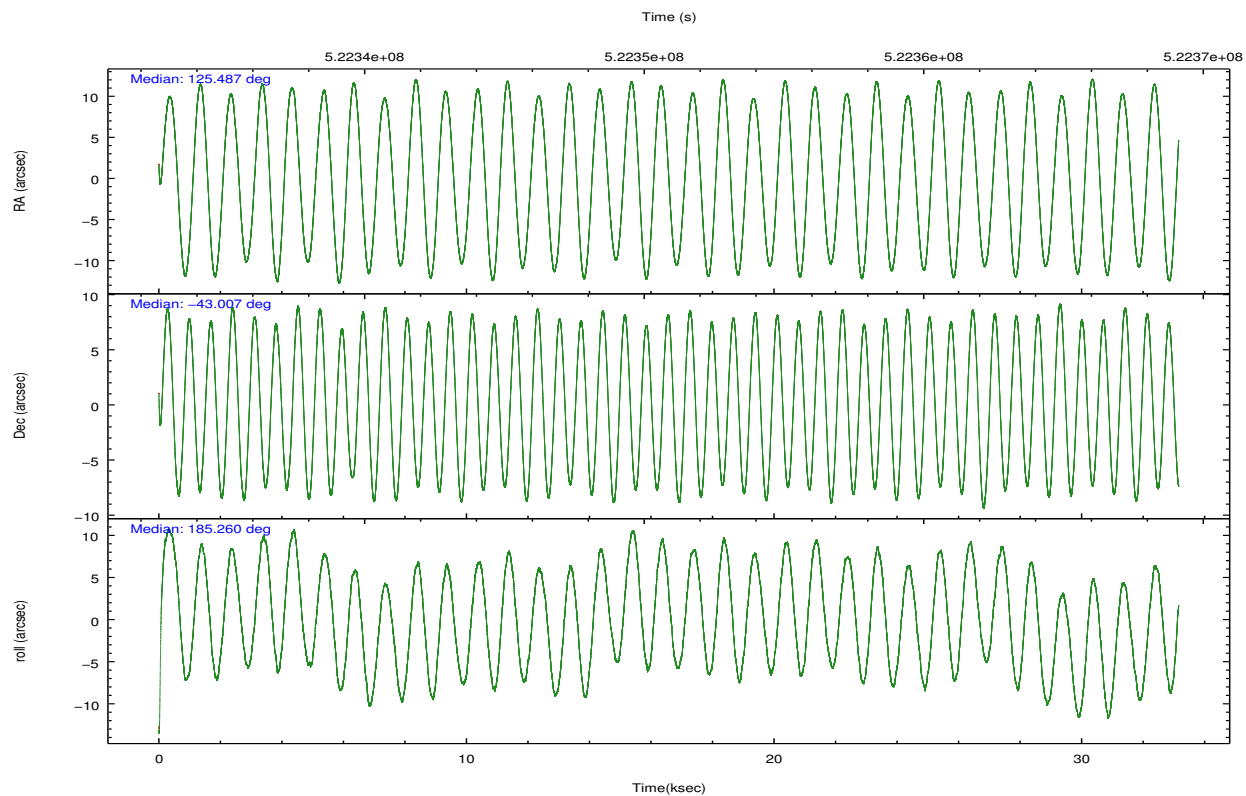
	<b>ccd 7</b>
level 1 events	1084520
rejected events	235786
rejected %	21%

	<b>ccd 7</b>
grade 0 events	241203
	22%
grade 1 events	457
	0%
grade 2 events	262006
	24%
grade 3 events	85409
	7%
grade 4 events	84669
	7%
grade 5 events	27443
	2%
grade 6 events	177583
	16%
grade 7 events	205750
	18%

## 2.2 Compared Parameters

Parameter	Planned	Actual	Parameter	Planned	Actual
Instrument	ACIS	ACIS	Obspar format version number	7	7
Detector	ACIS-7	ACIS-7	Obspar file type	PREDICTED	ACTUAL
Grating	NONE	NONE	Obspar update status	NONE	UPDATED
Data mode	CC33_FAINT	CC33_FAINT	Number of optional ACIS chips dropped	0	0
Observation mode	POINTING	POINTING	On-chip summing requested	N	N
[deg] Pointing RA	125.517194	125.4868404685048	Subarray requested	NONE	NONE
[deg] Pointing Dec	-42.991397	-43.00753678335835	Alternating exposures requested	N	N
[deg] Pointing Roll	185.132639	185.2685559584008	[s] Primary exposure time	0.000000	0
[mm] SIM focus pos	-0.684267	-0.6828225247311905			
[mm] SIM defocus	0	0.001444936568705701			
[mm] SIM translation stage pos	-190.132523	-190.1400660498719			
[mm] SIM translation stage offset	0	0.00754346686406393			
[s] Observation start time (MET)	522334460.184000	522333285.57949			
Observation start date	2014-07-21T12:53:13	2014-07-21T12:34:45			
[s] Observation end time (MET)	522367460.184000	522368025.39392			
Observation end date	2014-07-21T22:03:13	2014-07-21T22:13:45			
Read mode	CONTINUOUS	CONTINUOUS			

## 2.3 Aspect

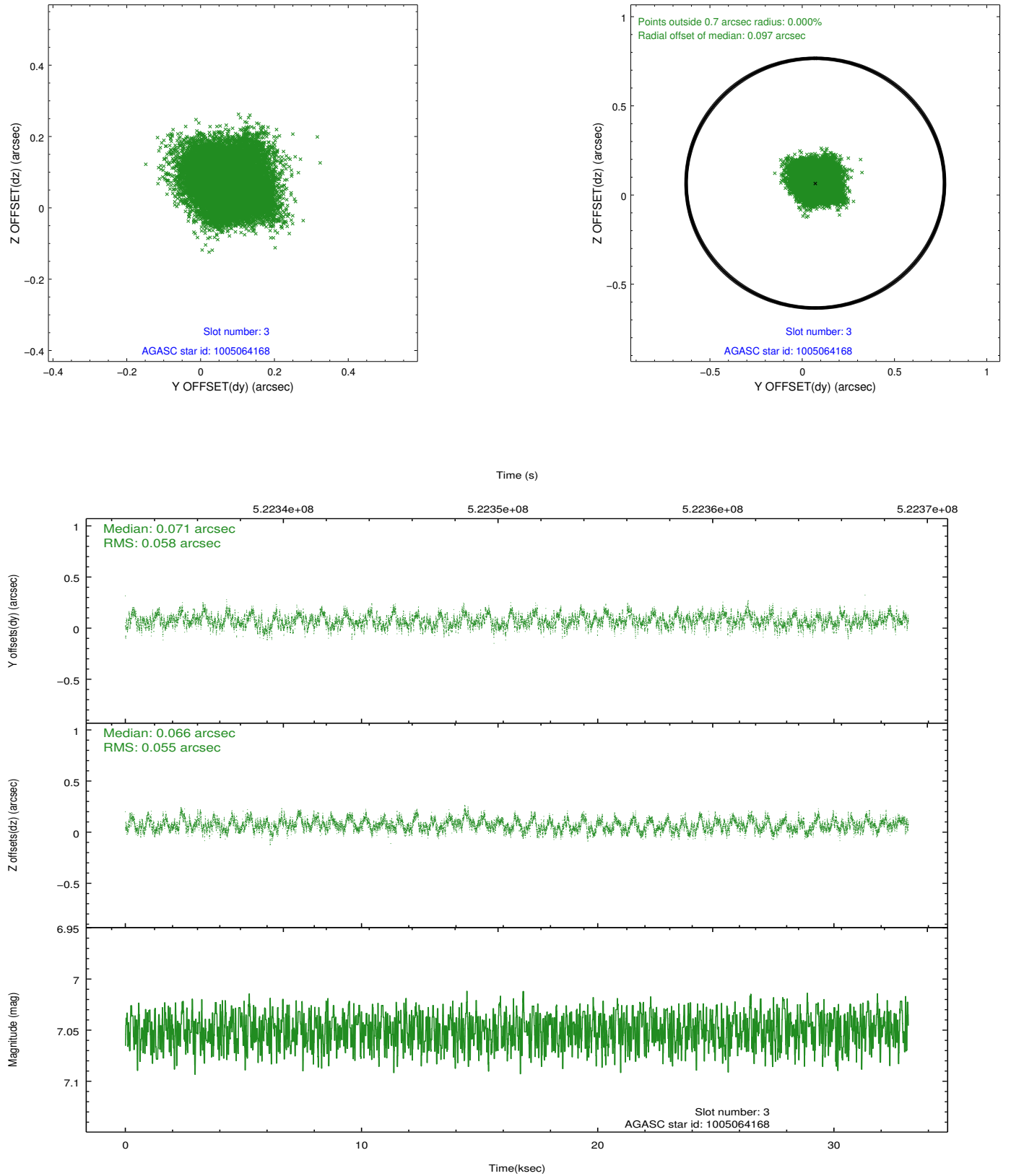


### Slot Statistics

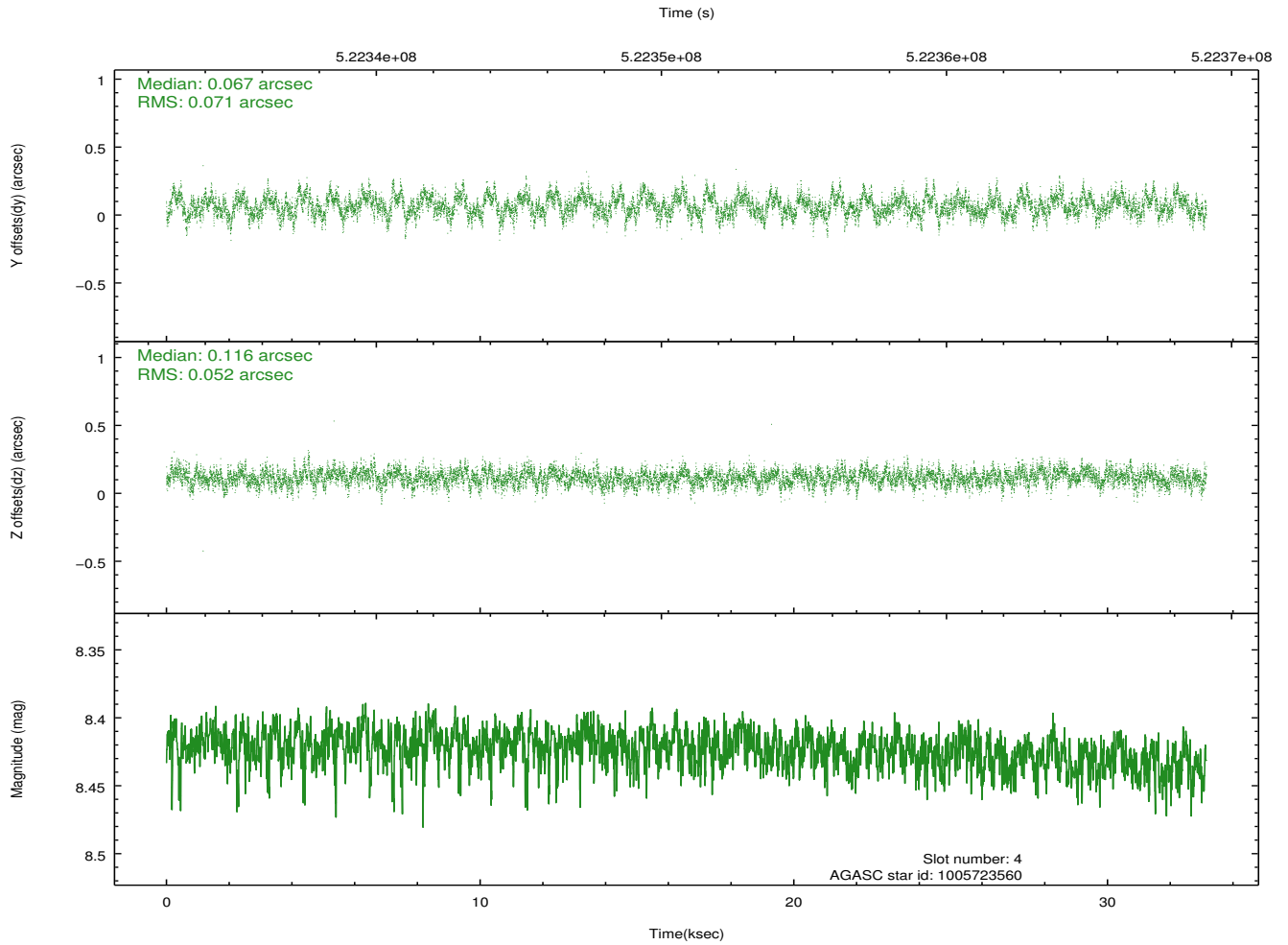
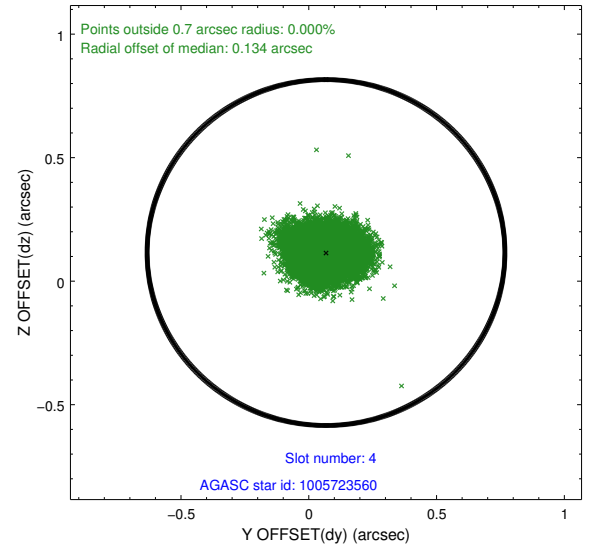
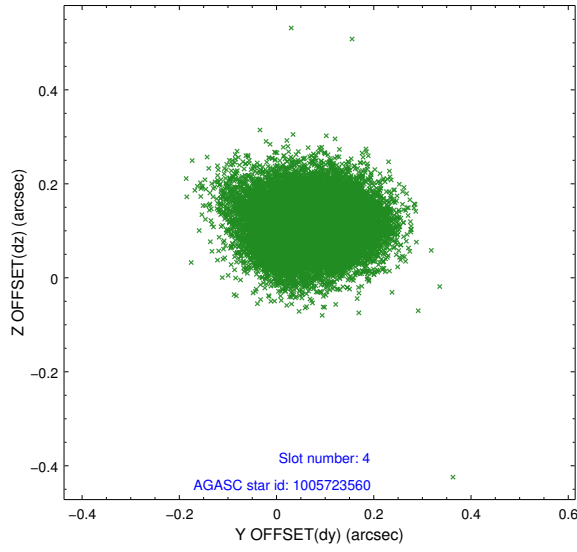
slot	status	id	mag	n_pts	med_dy	med_dz	dr1	dr2	ra	dec	mean_y	mean_z
0	FID	ACIS-S-2	6.95	8087	-0.089	-0.032	0.015	0.023	0.000000	0.000000	-770.27	-1739.59
1	FID	ACIS-S-4	7.03	8087	0.213	0.052	0.012	0.021	0.000000	0.000000	2143.30	168.89
2	FID	ACIS-S-5	7.06	8087	-0.151	-0.012	0.010	0.026	0.000000	0.000000	-1823.10	162.59
3	GUIDE	1005064168	7.05	16173	0.071	0.066	0.086	0.135	124.723843	-42.526737	1948.10	-1844.03
4	GUIDE	1005723560	8.42	16169	0.067	0.116	0.094	0.152	126.279097	-43.364629	-1864.86	1525.49
5	GUIDE	1005724040	7.60	16173	0.013	0.062	0.133	0.196	125.738175	-43.227880	-501.04	900.72
6	GUIDE	1005717968	9.59	16165	-0.143	0.006	0.157	0.249	125.336033	-43.394483	601.70	1403.60
7	GUIDE	1005726488	9.66	16164	-0.003	-0.233	0.252	0.369	125.372435	-43.343539	490.88	1229.13

## 2.4 Star Slots

### 2.4.1 Slot 3

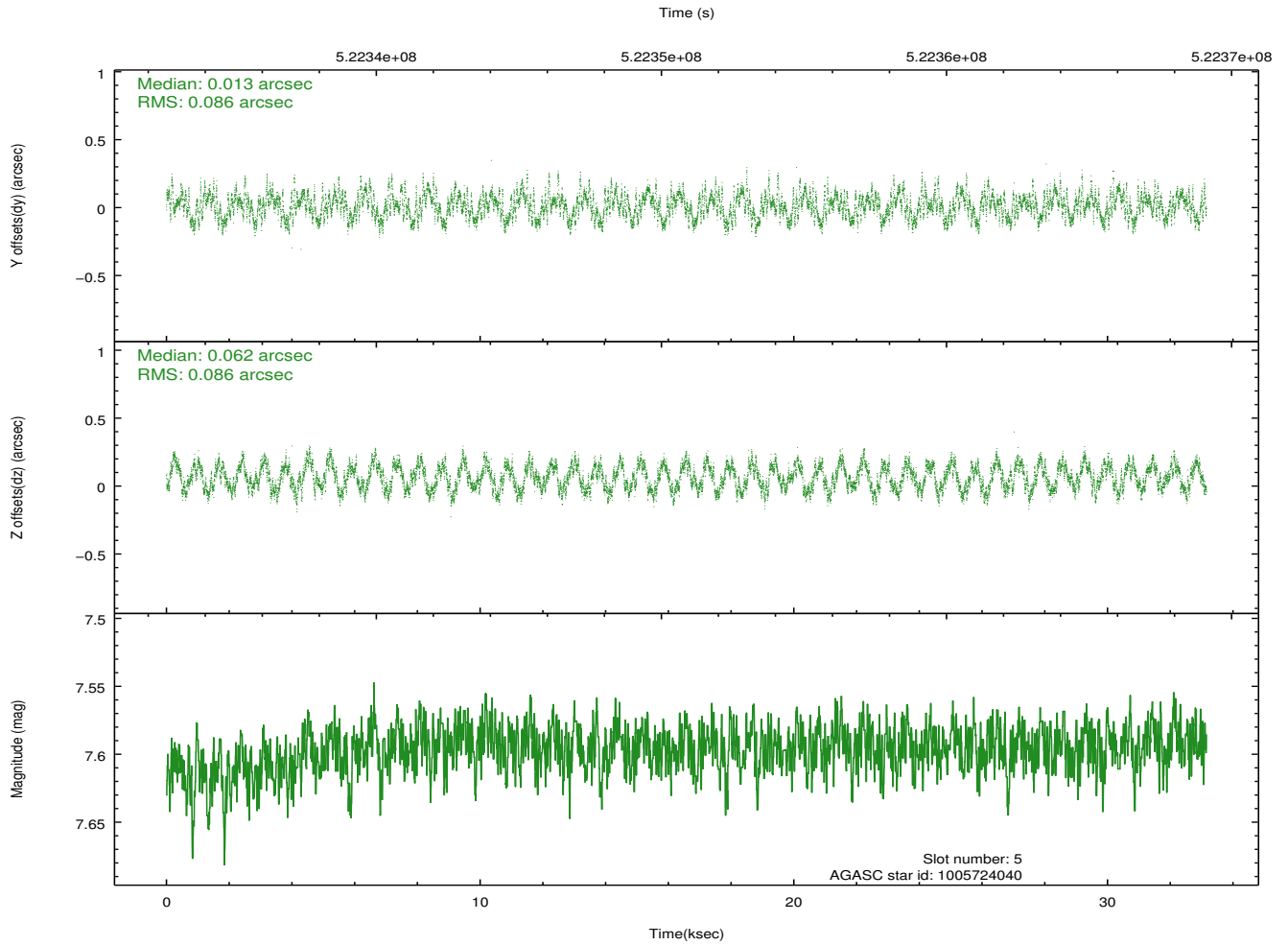
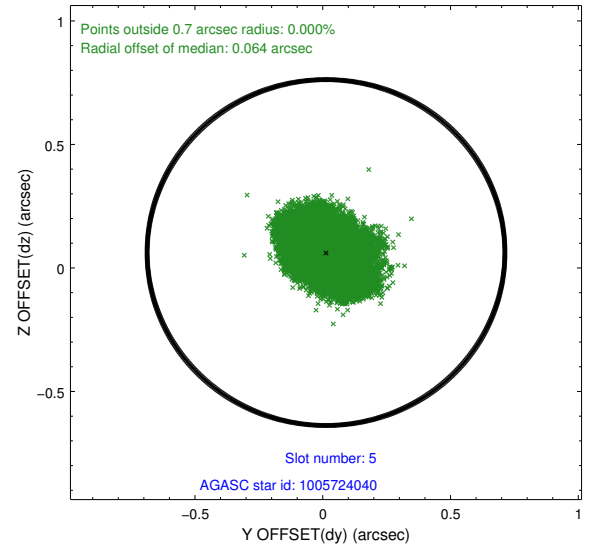
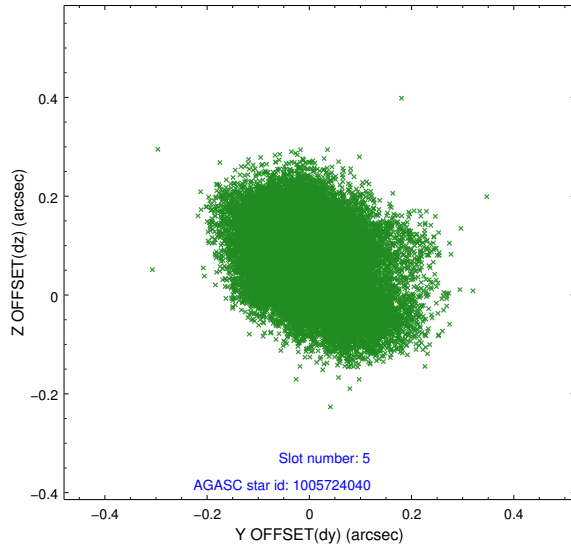


## 2.4.2 Slot 4

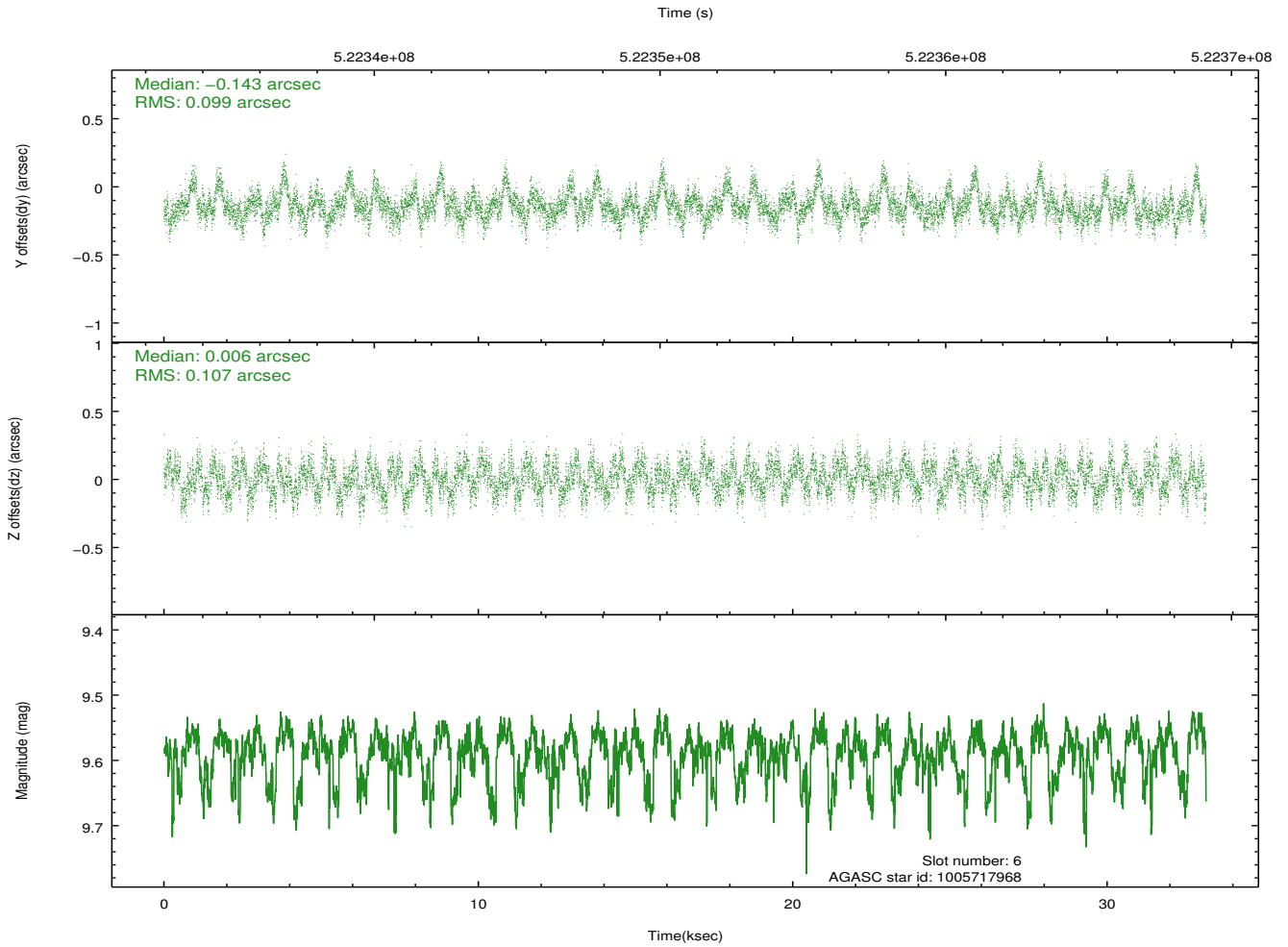
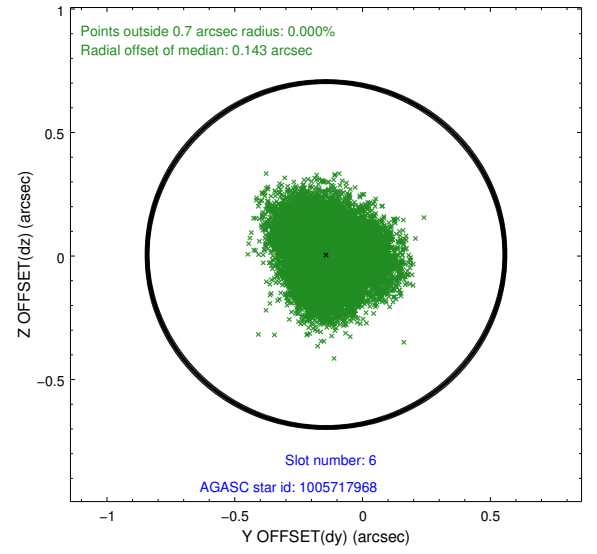
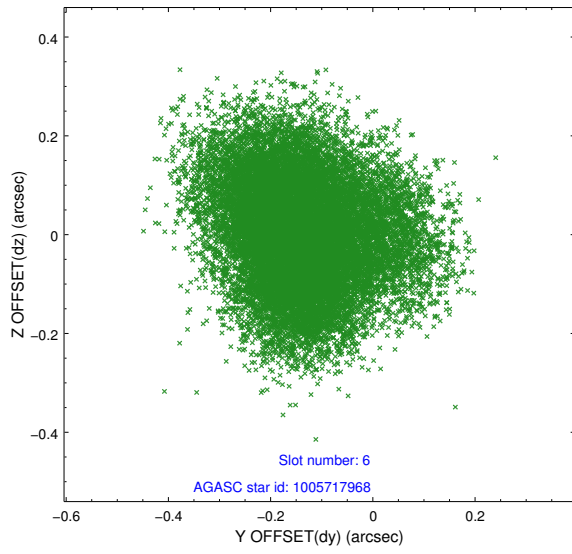




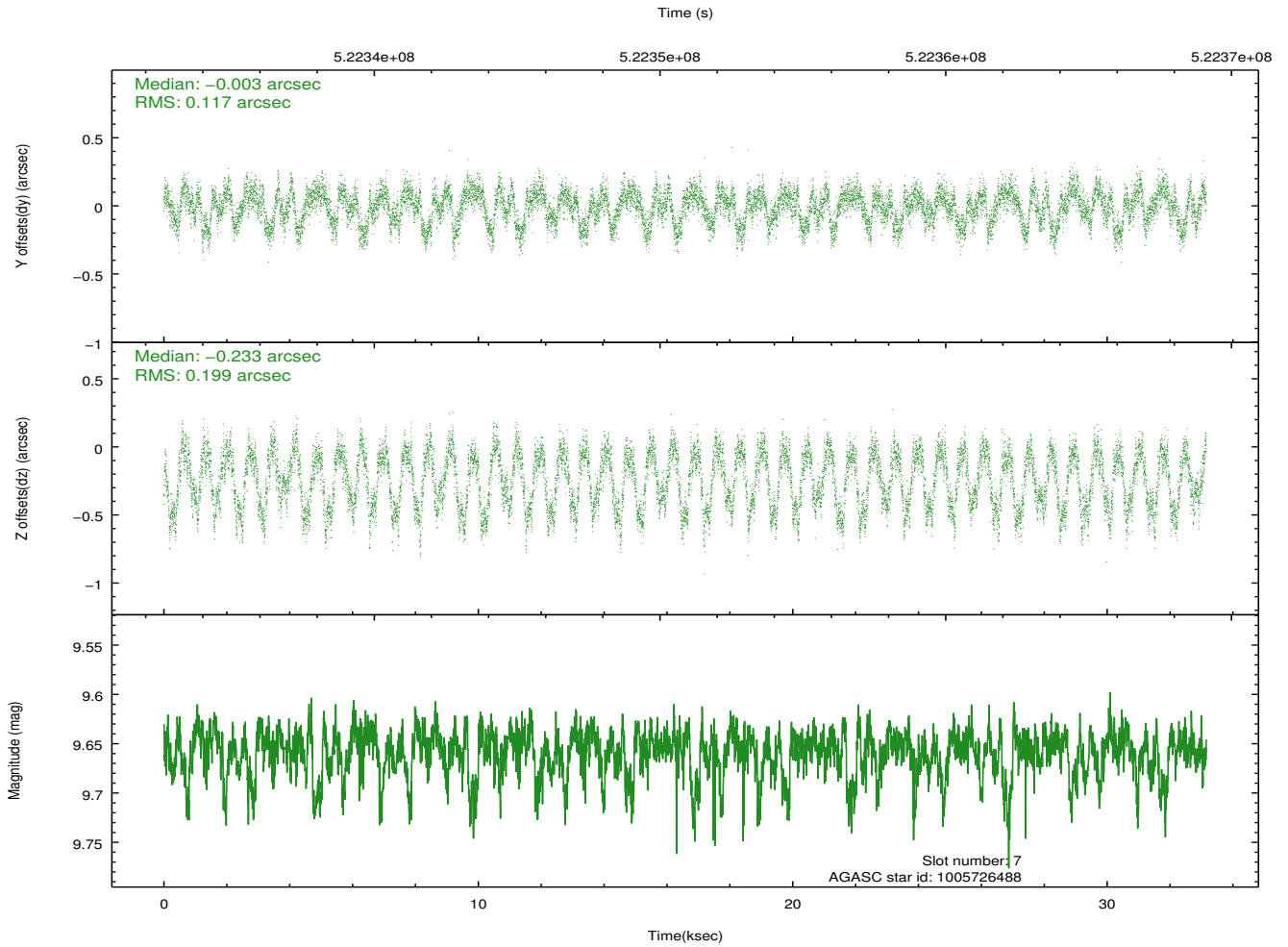
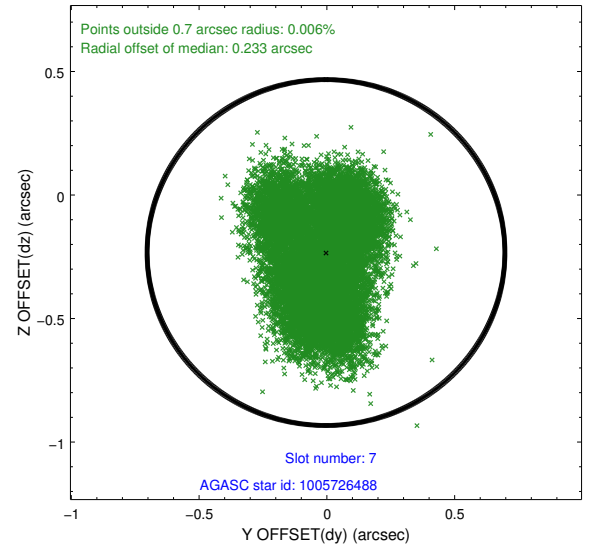
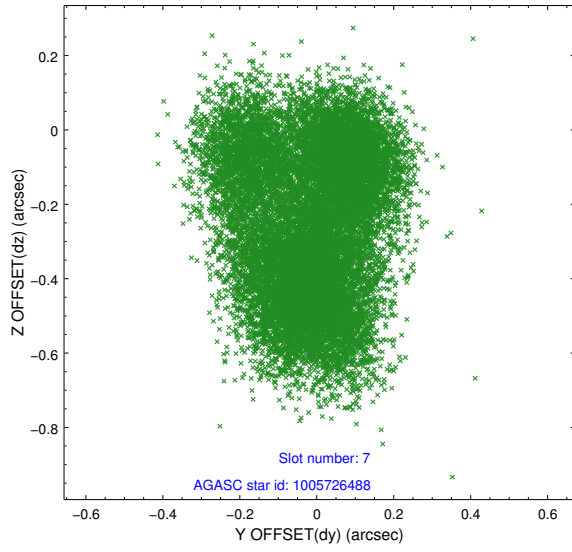
### 2.4.3 Slot 5



## 2.4.4 Slot 6

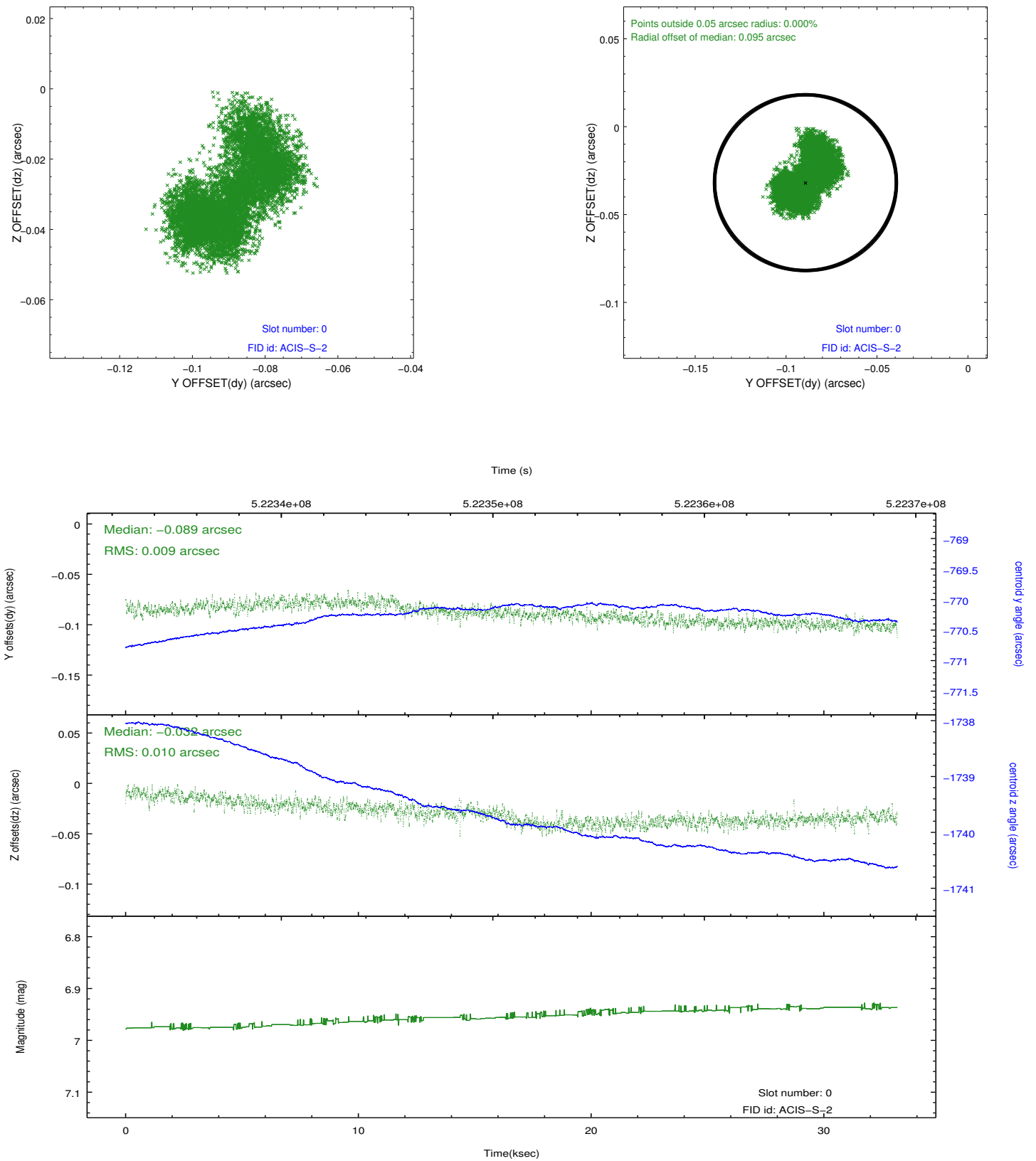


## 2.4.5 Slot 7

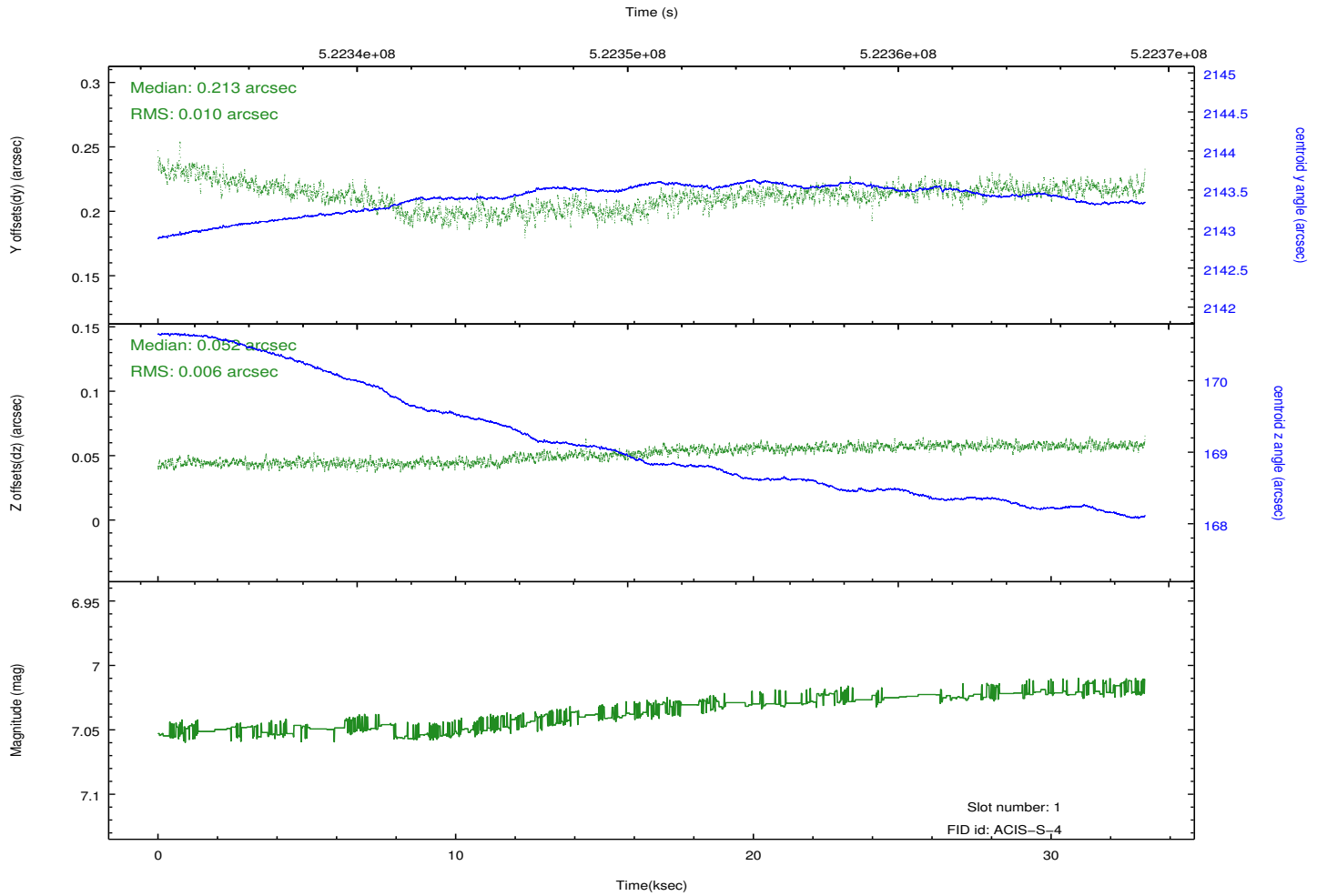
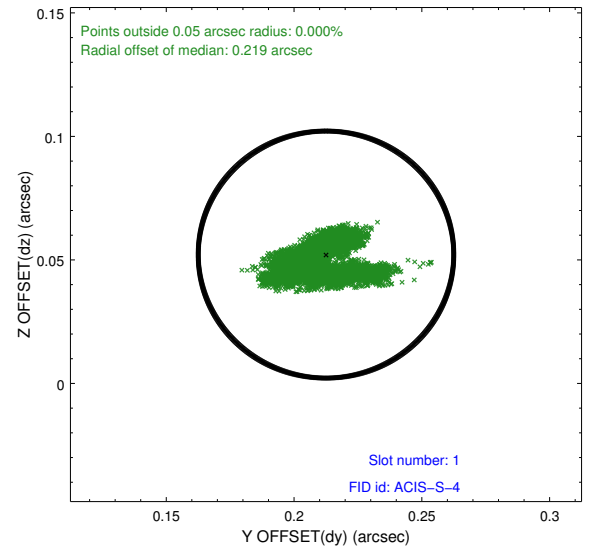
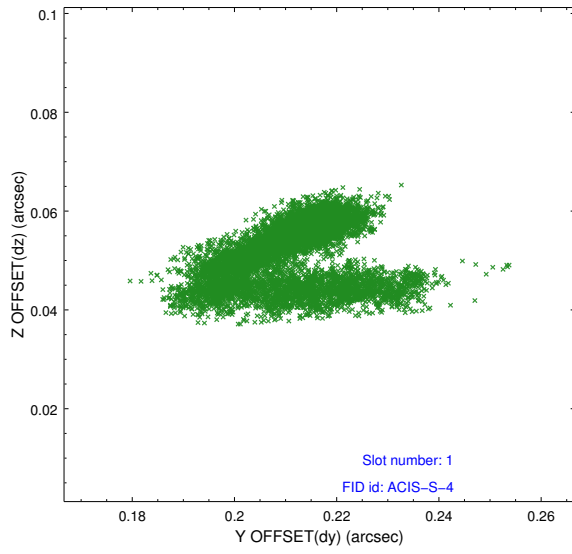


## 2.5 FID Slots

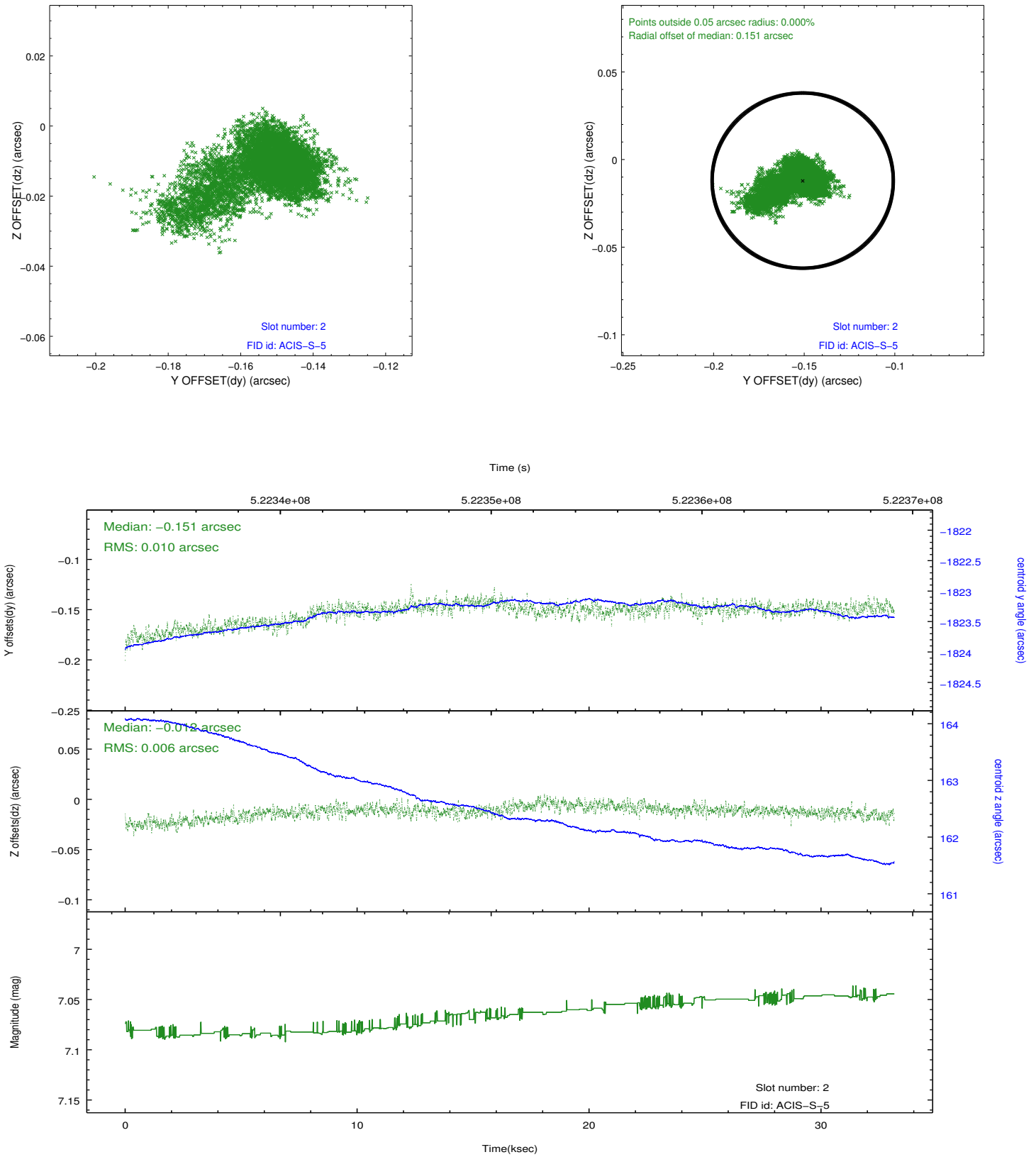
### 2.5.1 Slot 0



## 2.5.2 Slot 1



### 2.5.3 Slot 2



## A Summary

### A.1 Status

V&V Scientist	David Huenemoerder
V&V Date (YYYY-MM-DD)	2014.07.22
V&V Edition	1
V&V Disposition and Status	OK
V&V Charge Time	33.1485

### A.2 Comments