

V&V Reference Report

L2 ASCDS Version : 10.3.1

Observation 16134 - L2 Version 1
Chandra X-Ray Center

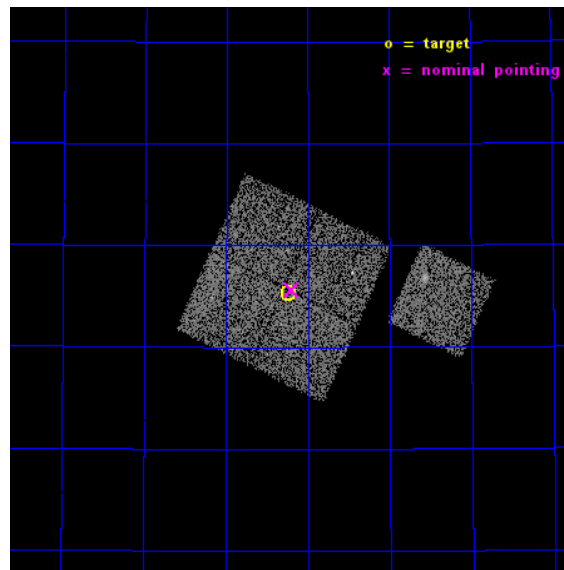
L2 Processing Date : Dec 6 2014

Contents

1	Front	2
2	OBI	3
2.1	OBI	3
2.1.1	Images	3
2.1.2	Bias	3
2.1.3	Parameters	4
2.1.4	Events	4
2.2	Compared Parameters	5
2.3	Aspect	6
2.4	Star Slots	9
2.4.1	Slot 3	9
2.4.2	Slot 4	10
2.4.3	Slot 5	11
2.4.4	Slot 6	12
2.4.5	Slot 7	13
2.5	FID Slots	14
2.5.1	Slot 0	14
2.5.2	Slot 1	15
2.5.3	Slot 2	16
A	Summary	17
A.1	Status	17
A.2	Comments	17

1 Front

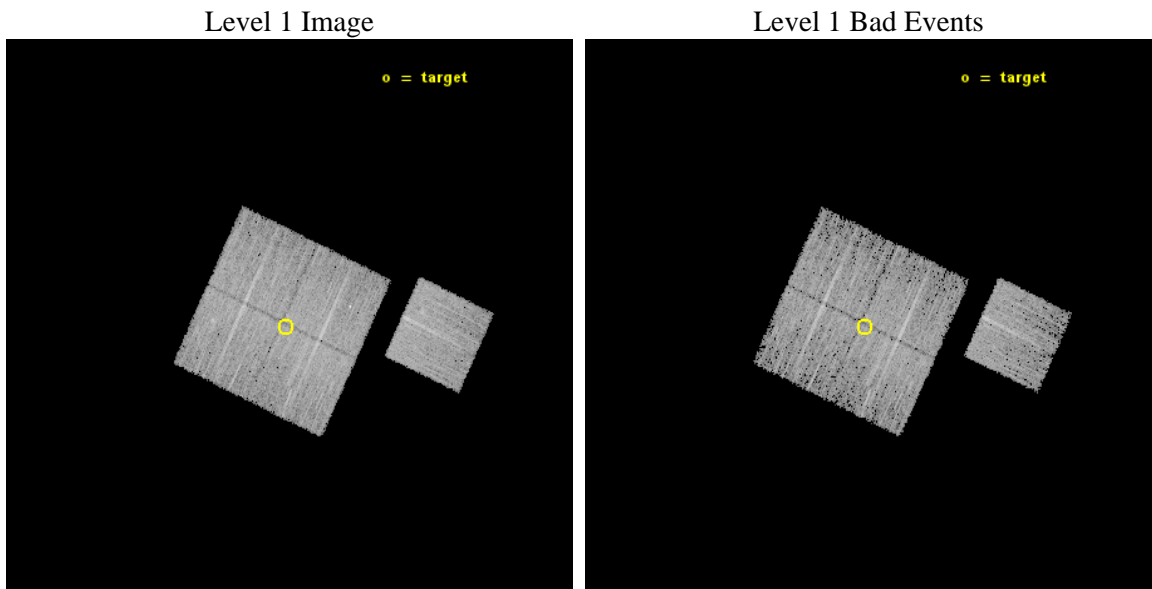
seq_num	801388	Sequence number
obs_id	16134	Observation id
title	TO THE VIRIAL RADIUS OF THE MOST LUMINOUS LOCAL GALAXY GROUP: UGC03957	Proposal title
observer	Dr. Lorenzo Lovisari	Principal investigator
object	UGC 03957 WEST	Source name
dtcycle	0	
cycle	P	events from which exps? Prim/Second/Both
ra_targ	114.56	Observer's specified target RA [deg]
dec_targ	55.254889	Observer's specified target Dec [deg]
ra_nom	114.55026691807	Nominal RA [deg]
dec_nom	55.260940779506	Nominal Dec [deg]
roll_nom	115.21668129026	Nominal Roll [deg]
revision	1	Processing version of data
ontime	10084.271905243	Sum of GTIs [s]
livetime	9952.5134688684	Livetime [s]
ontime0	10084.148785233	Sum of GTIs [s]
ontime1	10084.189825237	Sum of GTIs [s]
ontime2	10084.23086524	Sum of GTIs [s]
ontime3	10084.271905243	Sum of GTIs [s]
ontime6	10084.10774523	Sum of GTIs [s]
l2events	24492	Number of level 2 events



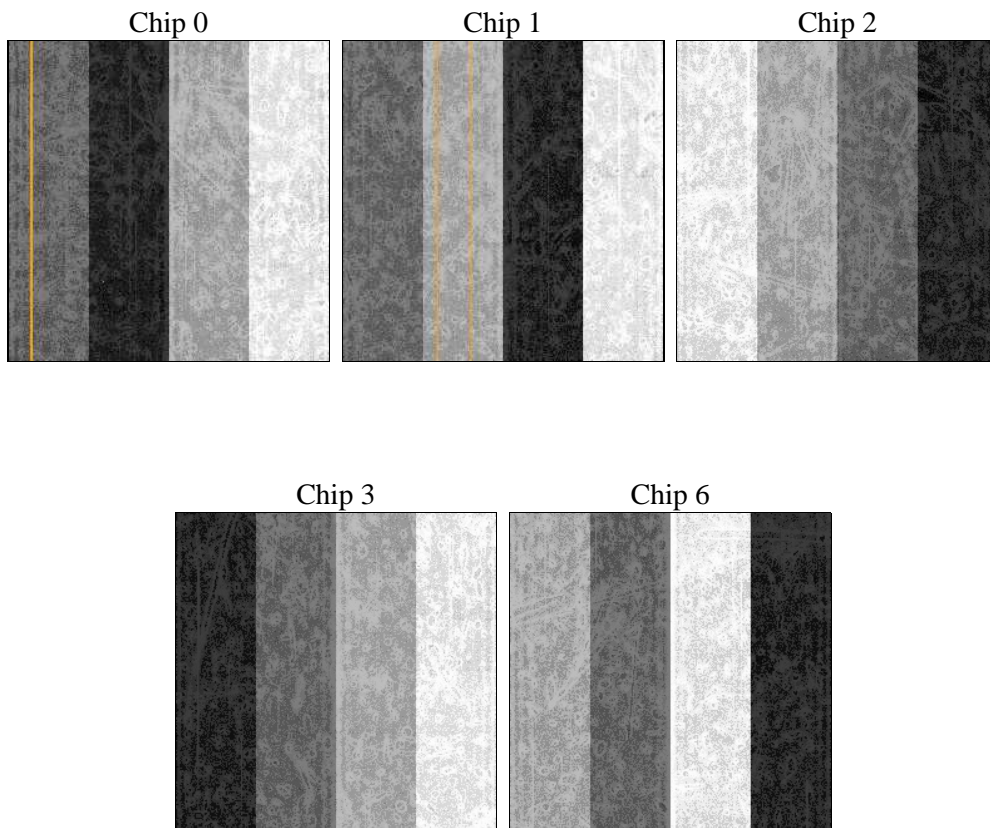
2 OBI

2.1 OBI

2.1.1 Images



2.1.2 Bias



2.1.3 Parameters

obi_num	0	Obi number	sched_exp_time	10000.000000	[s] Scheduled observation exposure time
ascdsver	10.3.1	Processing system revision	ontime	10084.271905243	Sum of GTIs [s]
caldsver	4.6.4	 	ontime0	10084.148785233	Sum of GTIs [s]
date	2014-12-06T18:41:36	Date and time of file creation	ontime1	10084.189825237	Sum of GTIs [s]
revision	1	Processing version of data	ontime2	10084.23086524	Sum of GTIs [s]
			ontime3	10084.271905243	Sum of GTIs [s]
			ontime6	10084.10774523	Sum of GTIs [s]
			l1events	221136	Number of level 1 events

2.1.4 Events

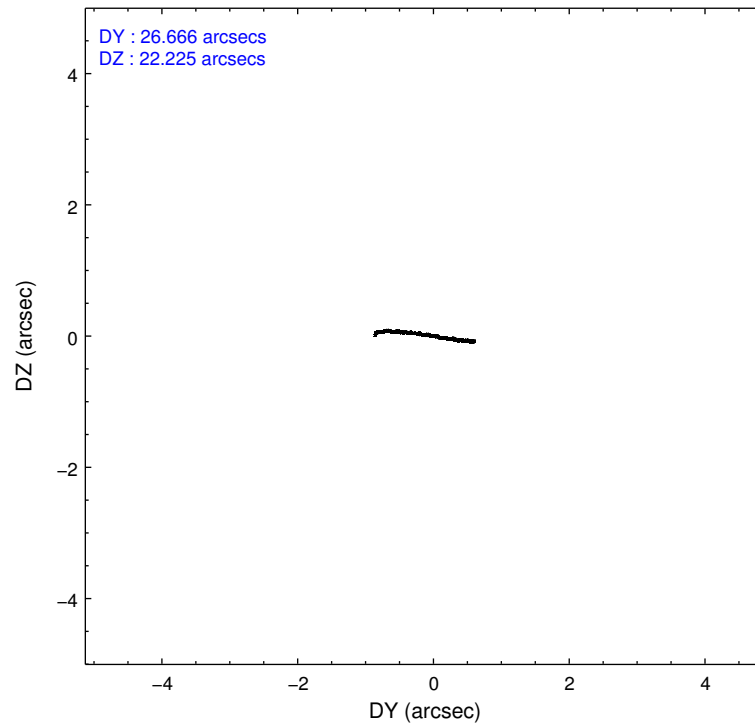
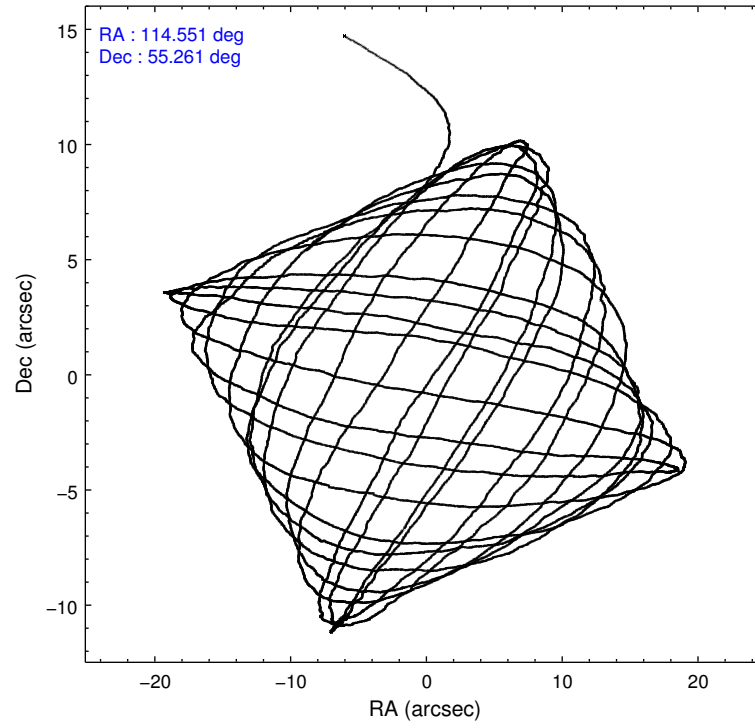
	ccd 0	ccd 1	ccd 2	ccd 3	ccd 6
level 1 events	41907	44047	44639	44785	45758
rejected events	36305	37541	38990	39480	39899
rejected %	86%	85%	87%	88%	87%

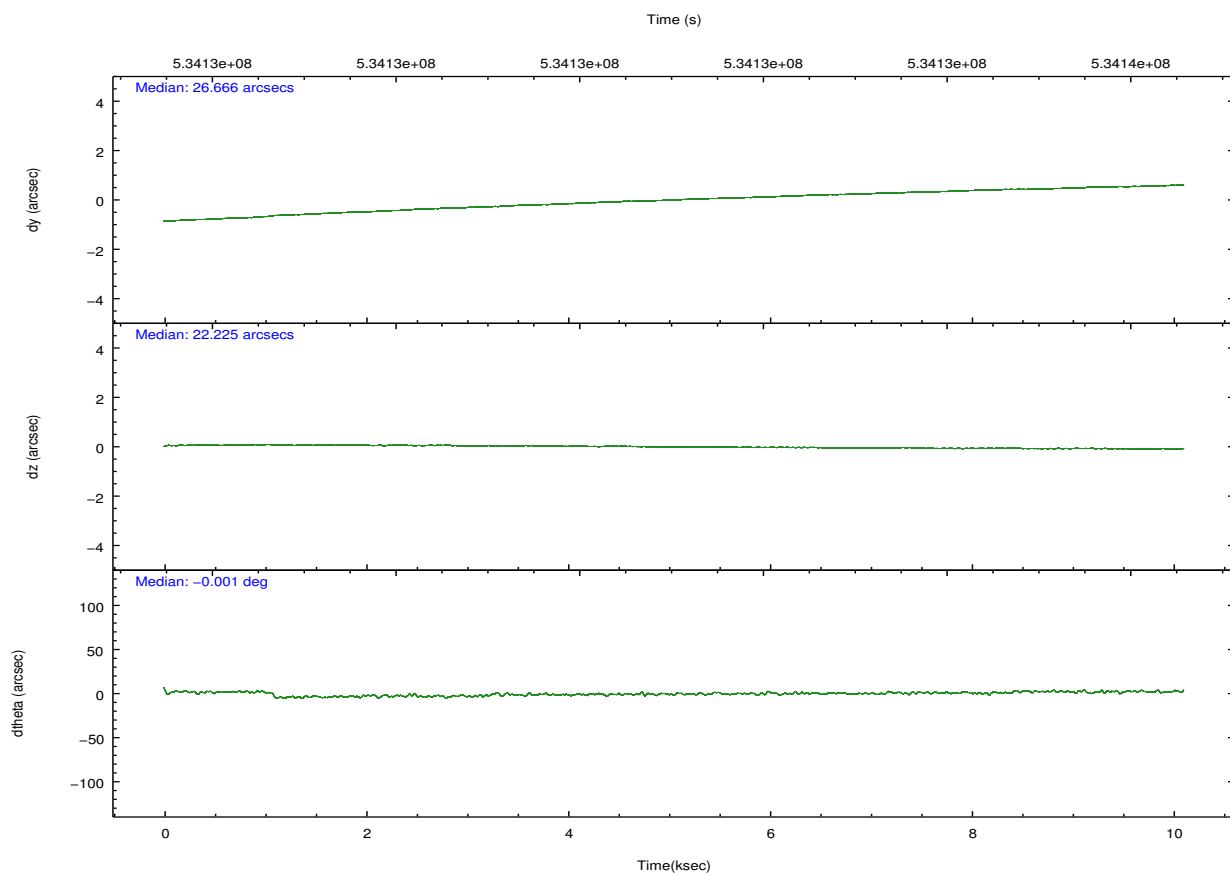
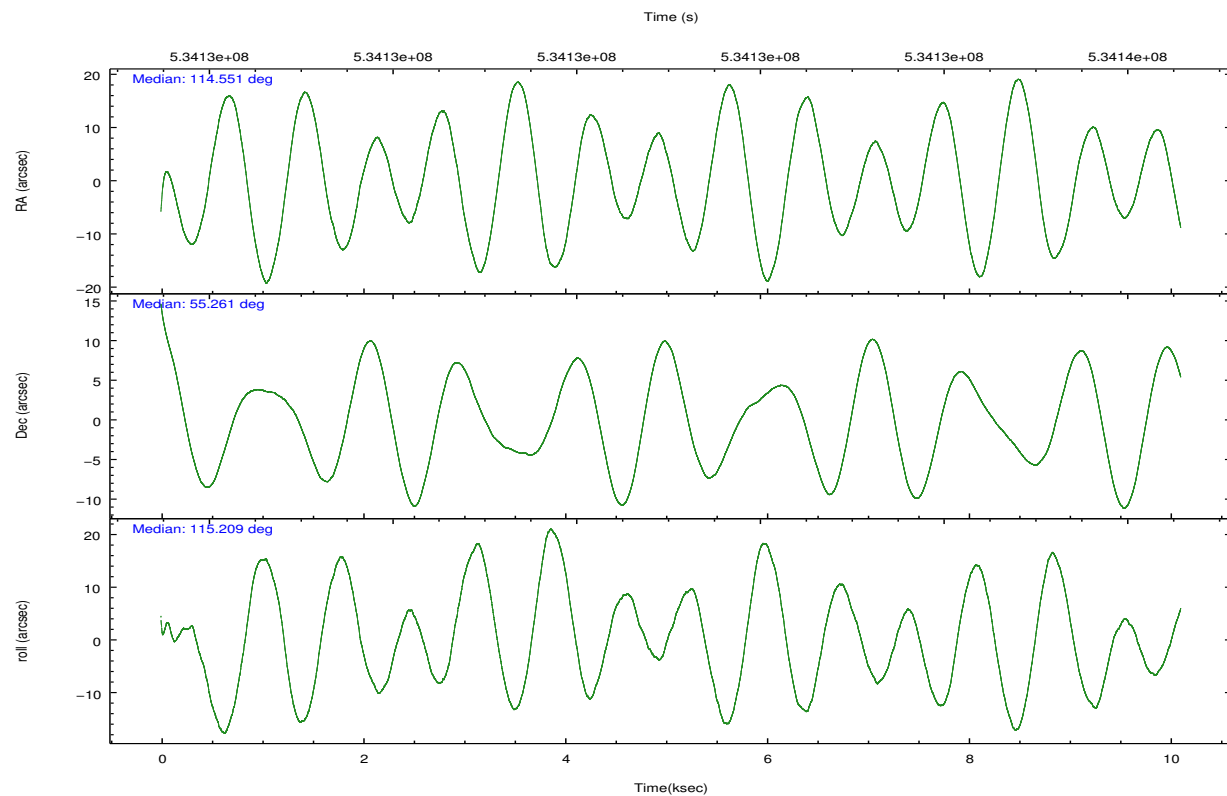
	ccd 0	ccd 1	ccd 2	ccd 3	ccd 6
grade 0 events	1898	2401	2174	1833	2056
	4%	5%	4%	4%	4%
grade 1 events	38	27	20	33	19
	0%	0%	0%	0%	0%
grade 2 events	1417	1600	1300	1177	1339
	3%	3%	2%	2%	2%
grade 3 events	551	581	556	549	592
	1%	1%	1%	1%	1%
grade 4 events	574	636	557	619	590
	1%	1%	1%	1%	1%
grade 5 events	2281	2432	2043	2478	2376
	5%	5%	4%	5%	5%
grade 6 events	1167	1294	1063	1127	1288
	2%	2%	2%	2%	2%
grade 7 events	33981	35076	36926	36969	37498
	81%	79%	82%	82%	81%

2.2 Compared Parameters

Parameter	Planned	Actual	Parameter	Planned	Actual
Instrument	ACIS	ACIS	Obspar format version number	7	7
Detector	ACIS-01236	ACIS-01236	Obspar file type	PREDICTED	ACTUAL
Grating	NONE	NONE	Obspar update status	NONE	UPDATED
Data mode	VFAINT	VFAINT	CCD I0 on	Y	Y
Observation mode	POINTING	POINTING	CCD I1 on	Y	Y
[deg] Pointing RA	114.590148	114.5502669180746	CCD I2 on	Y	Y
[deg] Pointing Dec	55.245246	55.26094077950575	CCD I3 on	Y	Y
[deg] Pointing Roll	114.975237	115.216681290264	CCD S0 on	N	N
[mm] SIM focus pos	-0.782348	-0.7809083437167272	CCD S1 on	N	N
[mm] SIM defocus	0	0.001439871863259334	CCD S2 on	O1	Y
[mm] SIM translation stage pos	-233.592463	-233.5874344608287	CCD S3 on	N	N
[mm] SIM translation stage offset	0	-0.005018542100998502	CCD S4 on	N	N
[s] Observation start time (MET)	534126077.184000	534124527.99689	CCD S5 on	N	N
Observation start date	2014-12-05T00:20:10	2014-12-04T23:55:27	Number of optional ACIS chips dropped	0	0
[s] Observation end time (MET)	534136077.184000	534137277.9726	On-chip summing requested	N	N
Observation end date	2014-12-05T03:06:50	2014-12-05T03:27:57	Subarray requested	NONE	NONE
Read mode	TIMED	TIMED	Alternating exposures requested	N	N
			[s] Primary exposure time	0.000000	3.1

2.3 Aspect



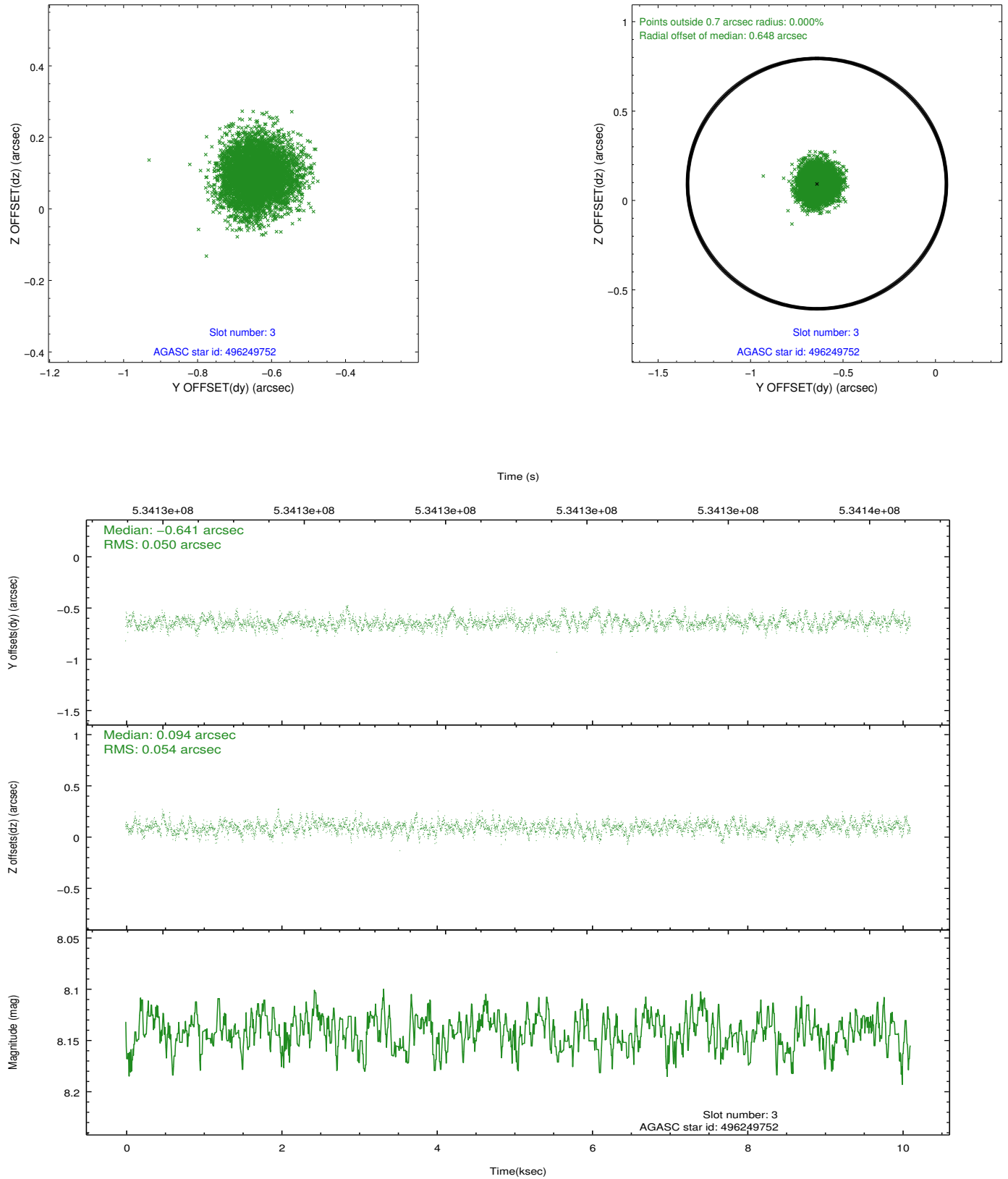


Slot Statistics

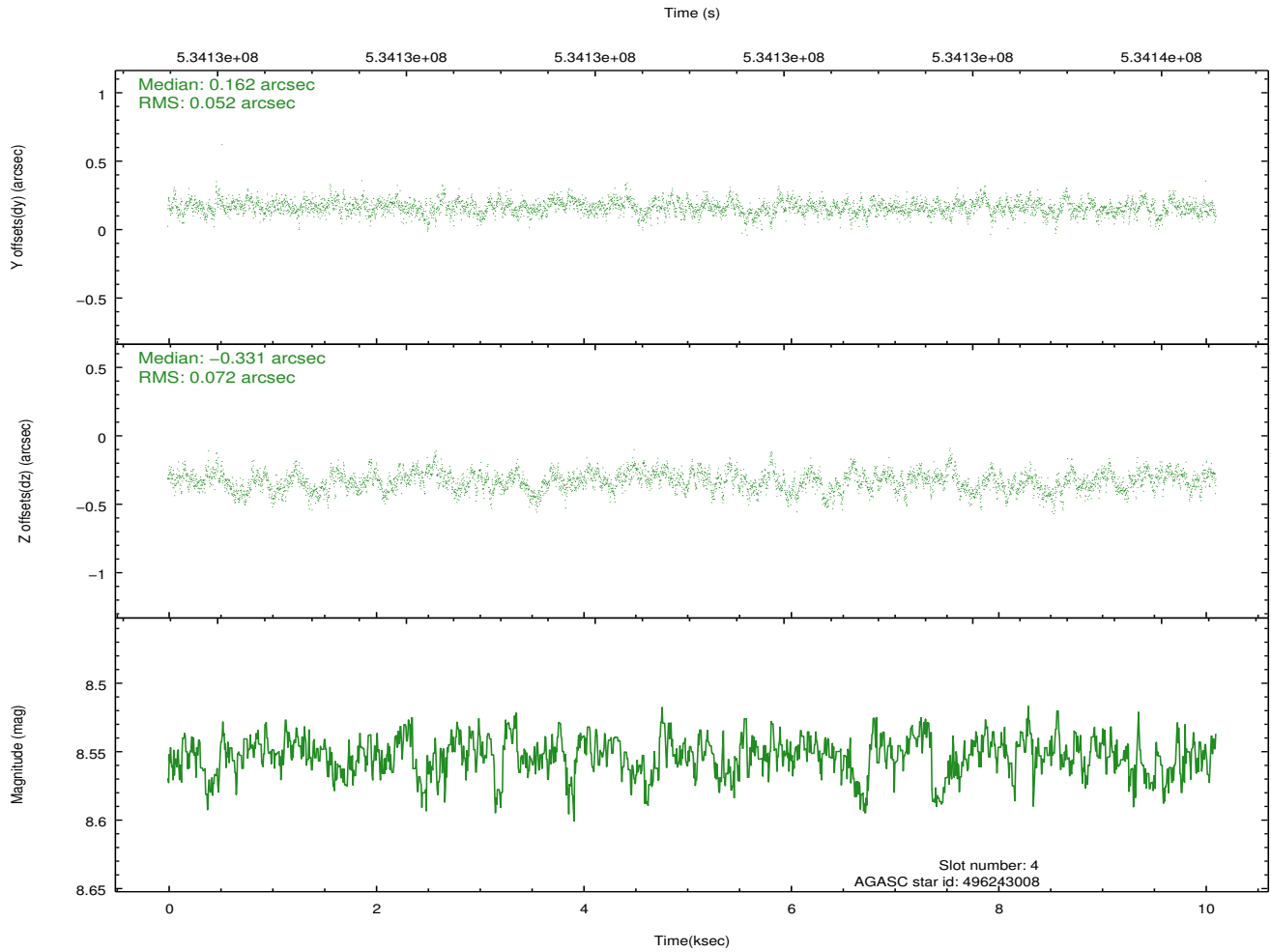
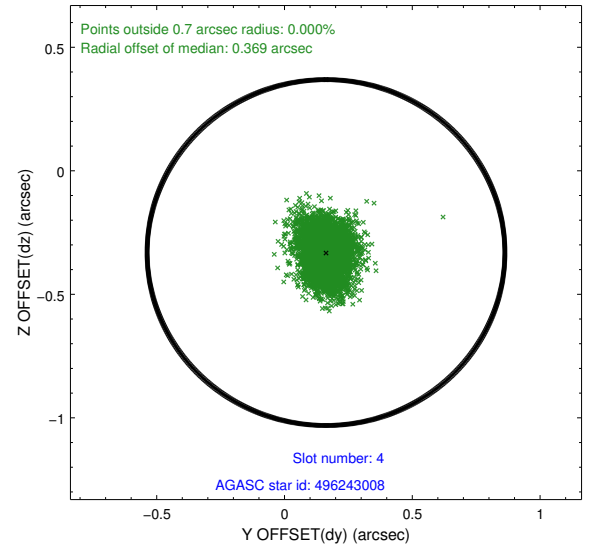
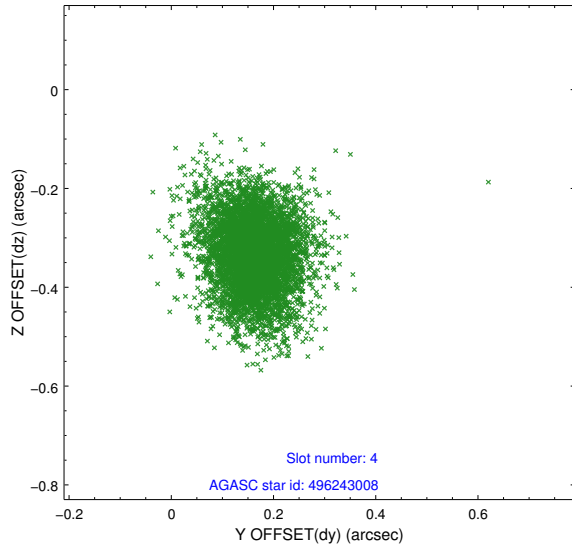
slot	status	used	id	mag	n_pts	med_dy	med_dz	dr1	dr2	ra	dec	mean_y	mean_z
0	FID		ACIS-I-1	7.07	2465	-0.052	0.023	0.011	0.045	0.000000	0.000000	912.45	-845.99
1	FID		ACIS-I-2	6.99	2466	-0.266	-0.145	0.016	0.024	0.000000	0.000000	-781.57	-852.84
2	FID		ACIS-I-4	7.05	2465	0.220	0.192	0.018	0.056	0.000000	0.000000	2132.39	1053.69
3	GUIDE	used	496249752	8.14	4931	-0.641	0.094	0.079	0.127	114.583542	55.205517	-124.67	73.42
4	GUIDE	used	496243008	8.55	4929	0.162	-0.331	0.092	0.157	113.961530	54.519589	-1808.81	2291.90
5	GUIDE	used	496242264	9.32	4929	-0.055	0.262	0.177	0.291	115.334729	55.945747	1659.39	-2427.28
6	GUIDE	used	496246016	9.86	4930	0.232	-0.107	0.168	0.265	114.362477	54.476092	-2308.04	1600.32
7	GUIDE	used	496248896	9.39	4929	0.298	0.086	0.128	0.211	114.667973	54.545769	-2351.30	916.12

2.4 Star Slots

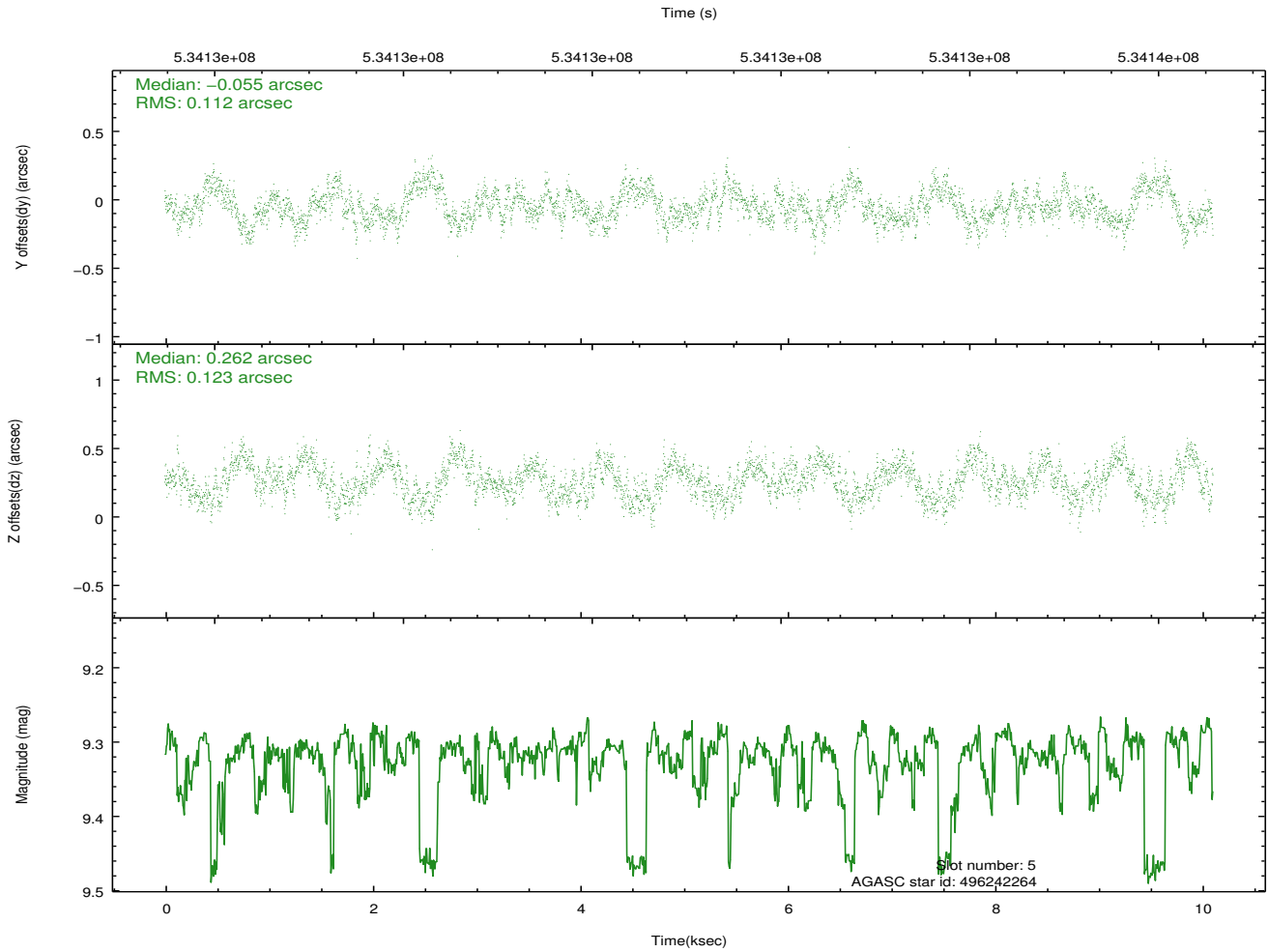
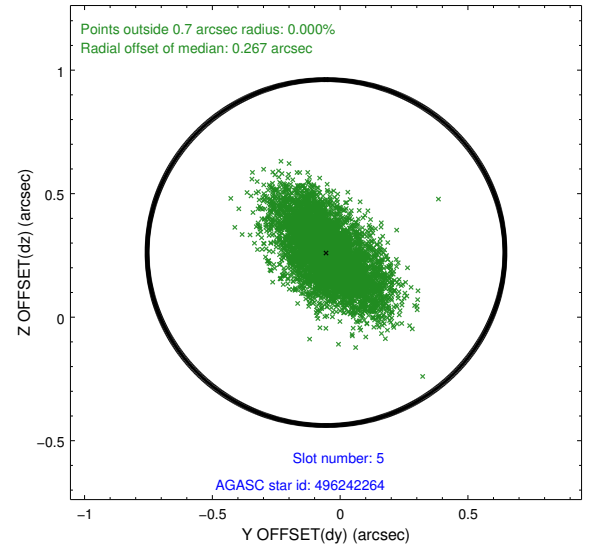
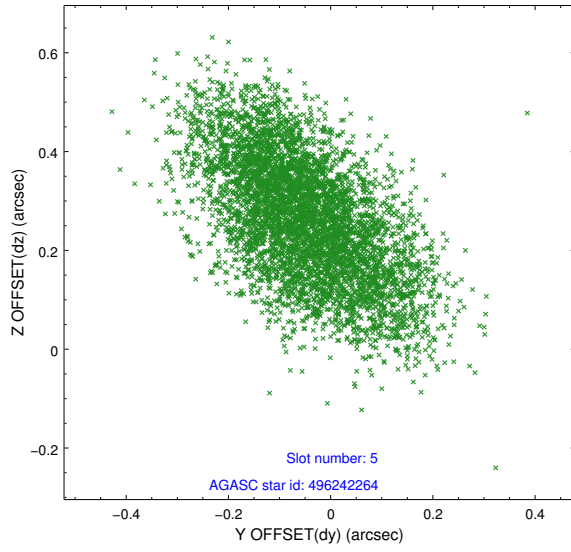
2.4.1 Slot 3



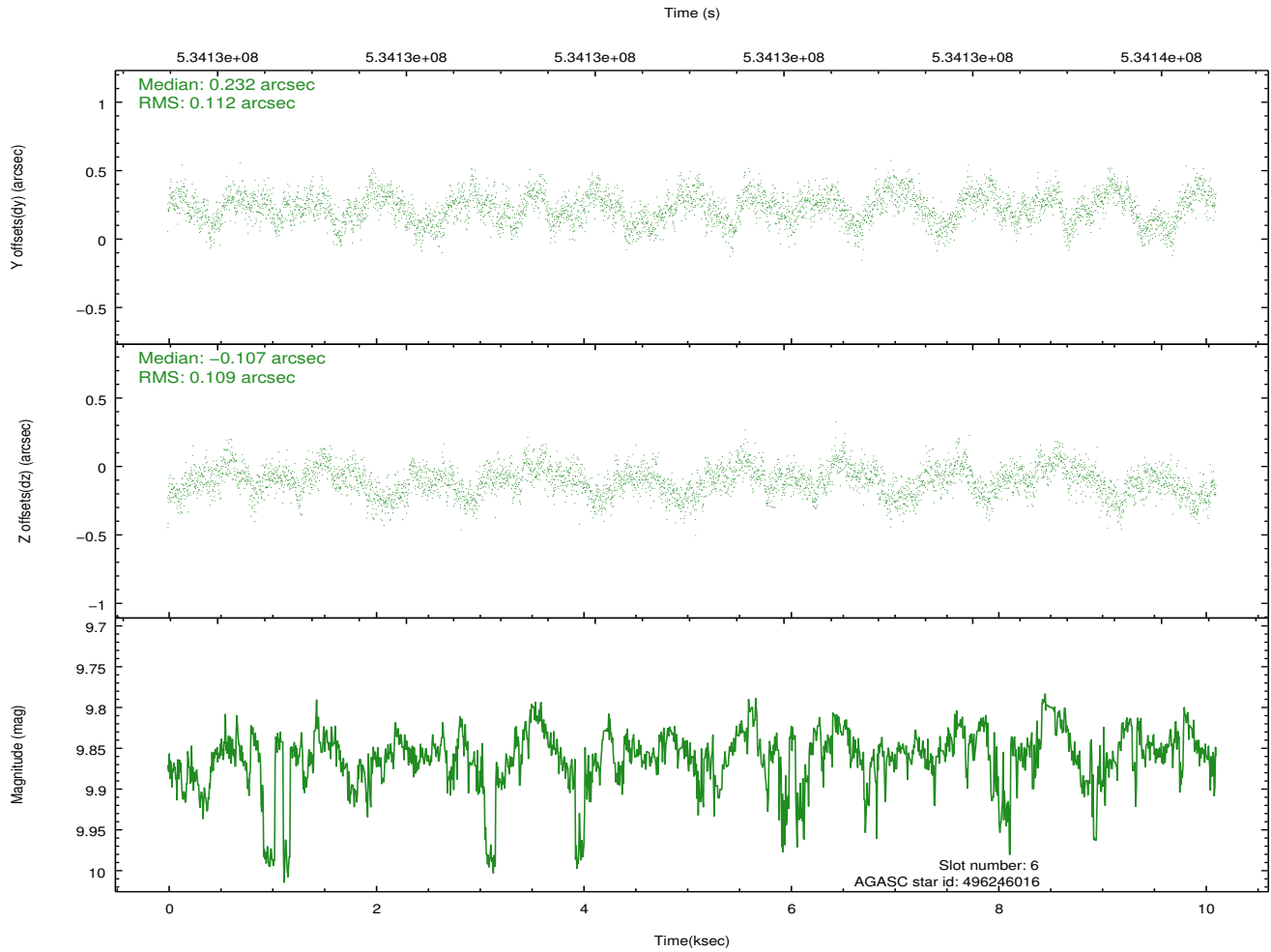
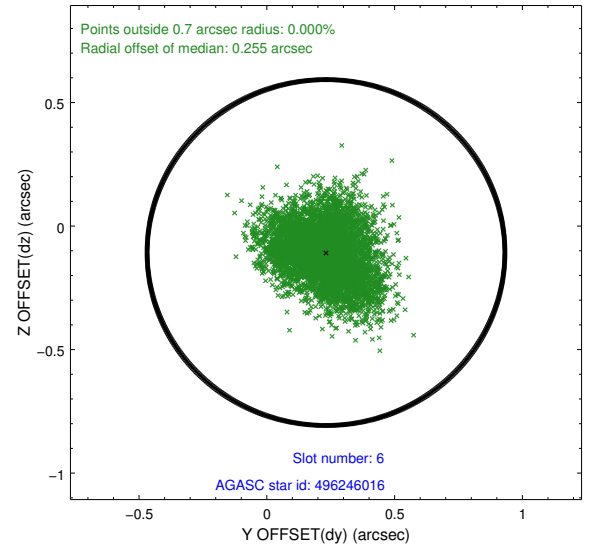
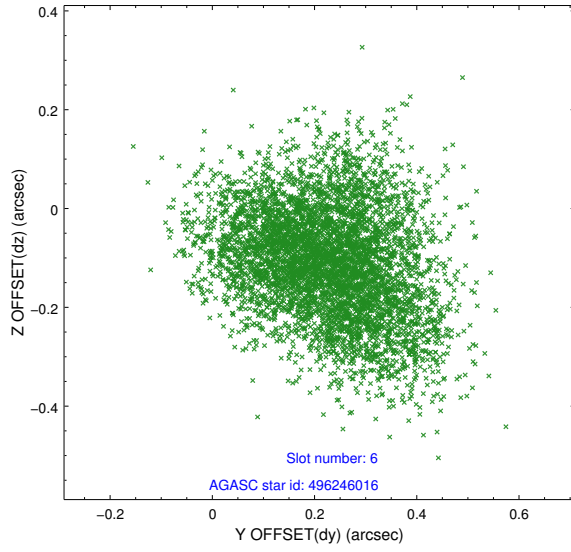
2.4.2 Slot 4



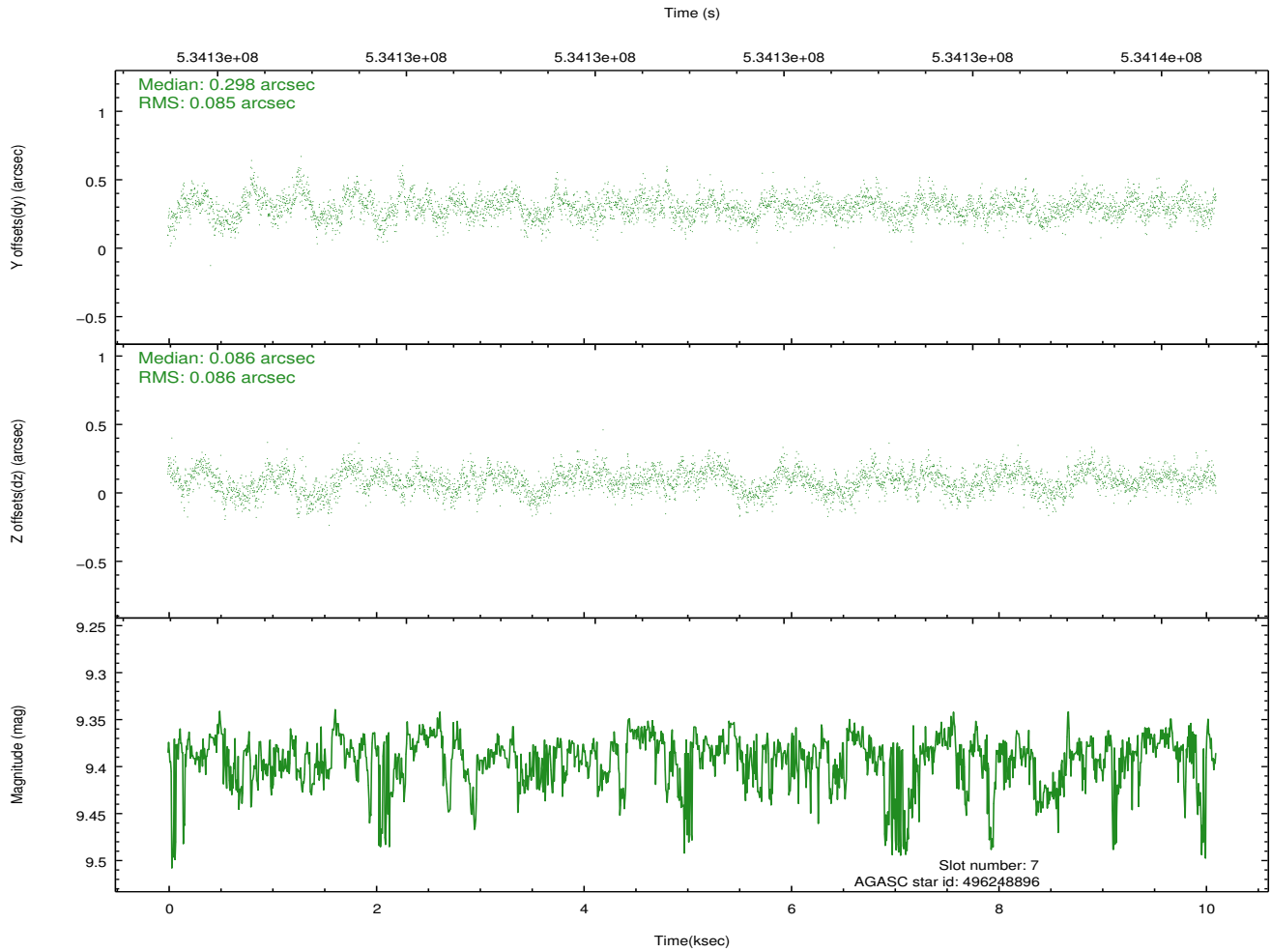
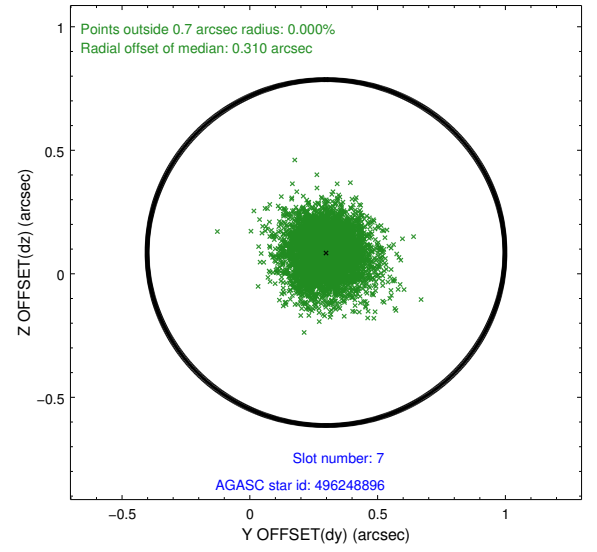
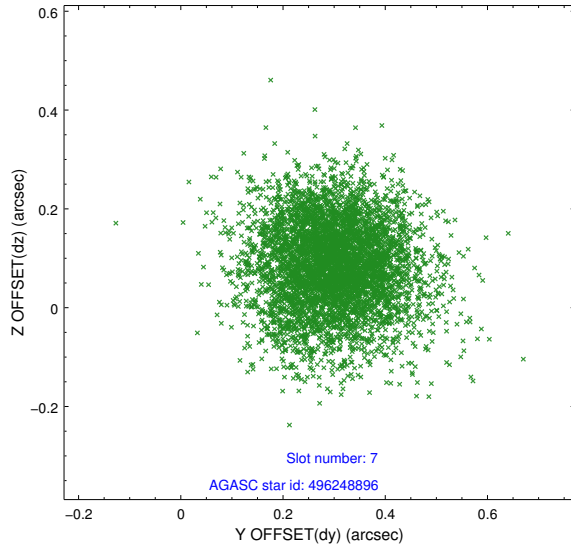
2.4.3 Slot 5



2.4.4 Slot 6

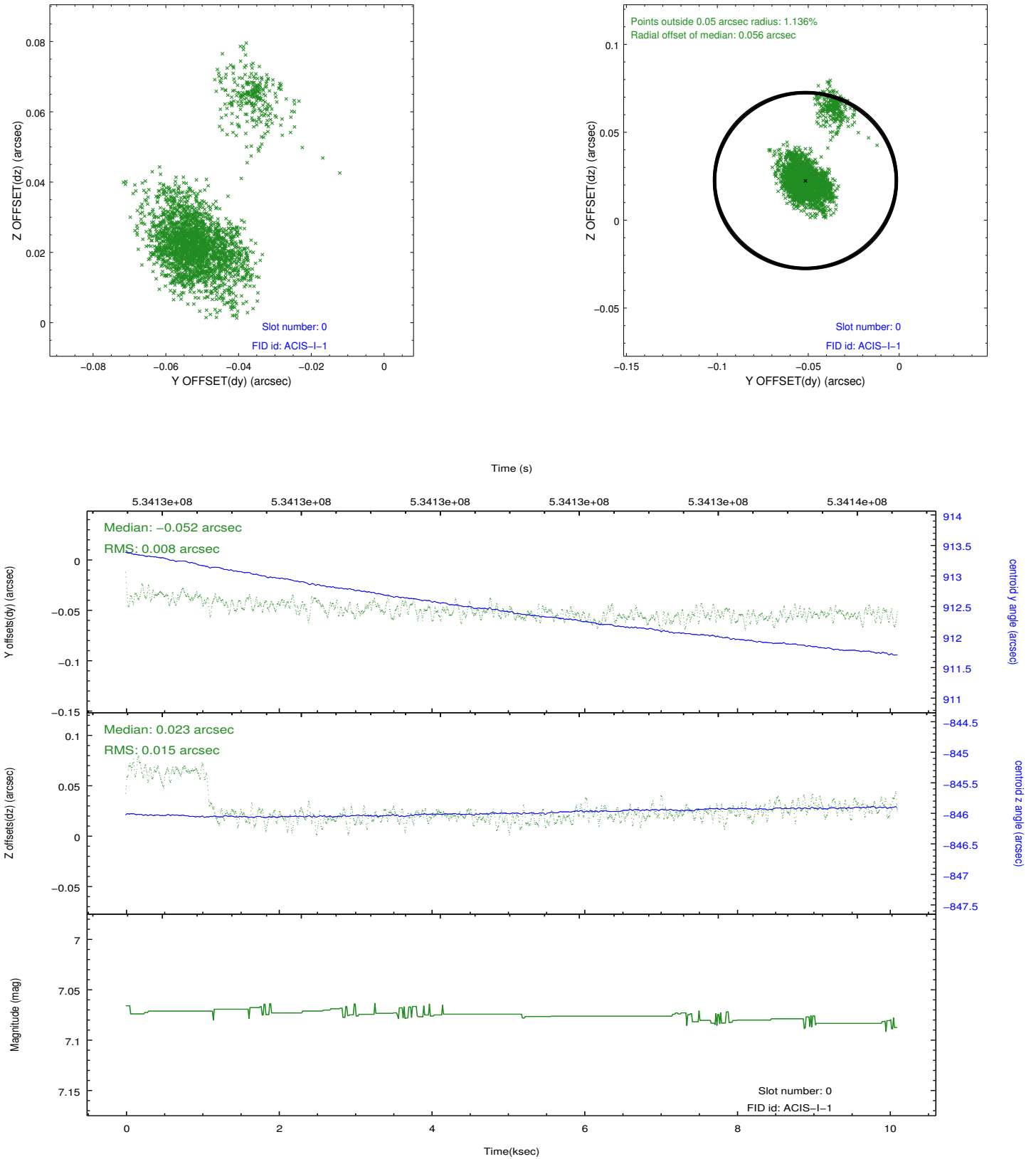


2.4.5 Slot 7

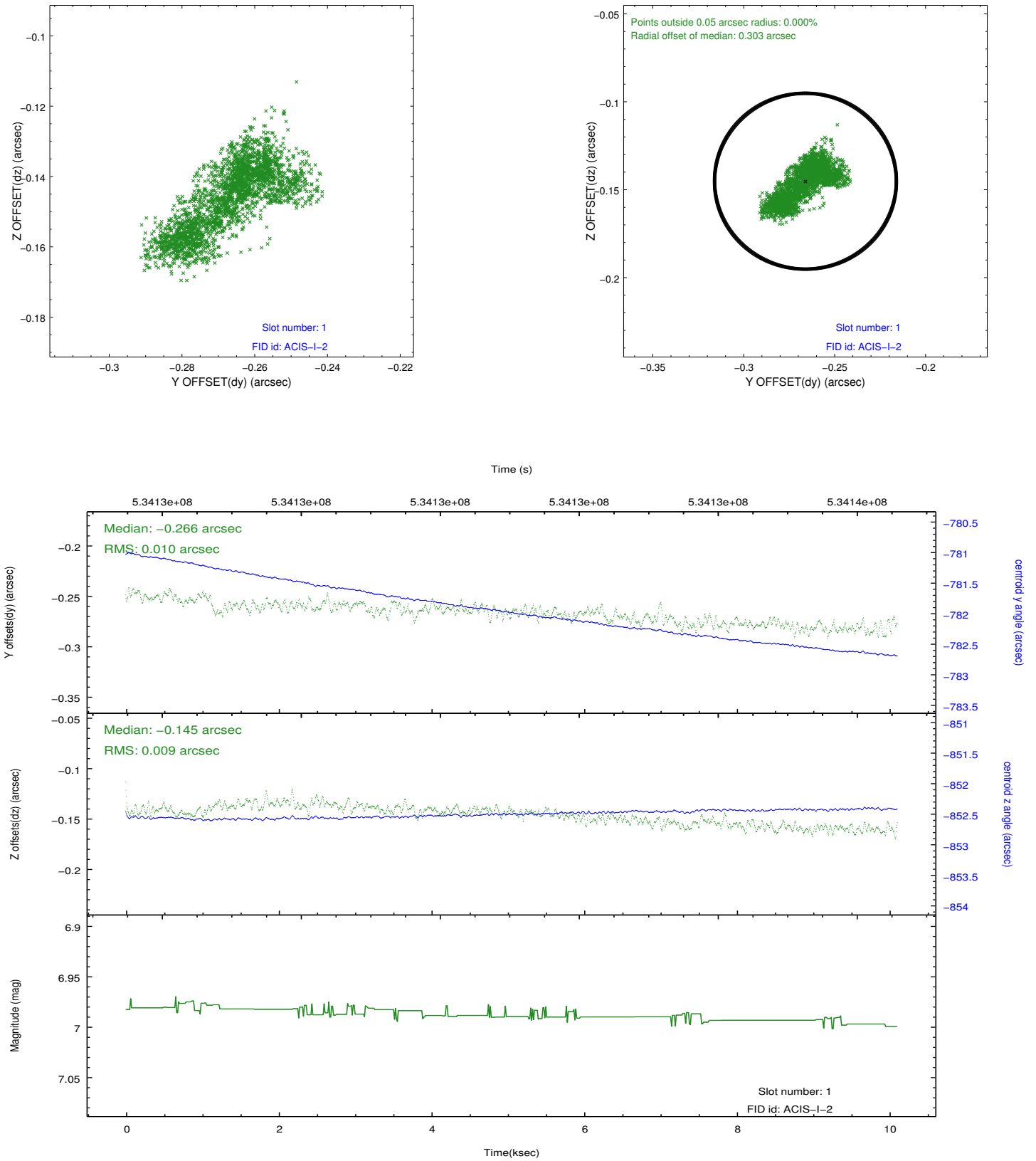


2.5 FID Slots

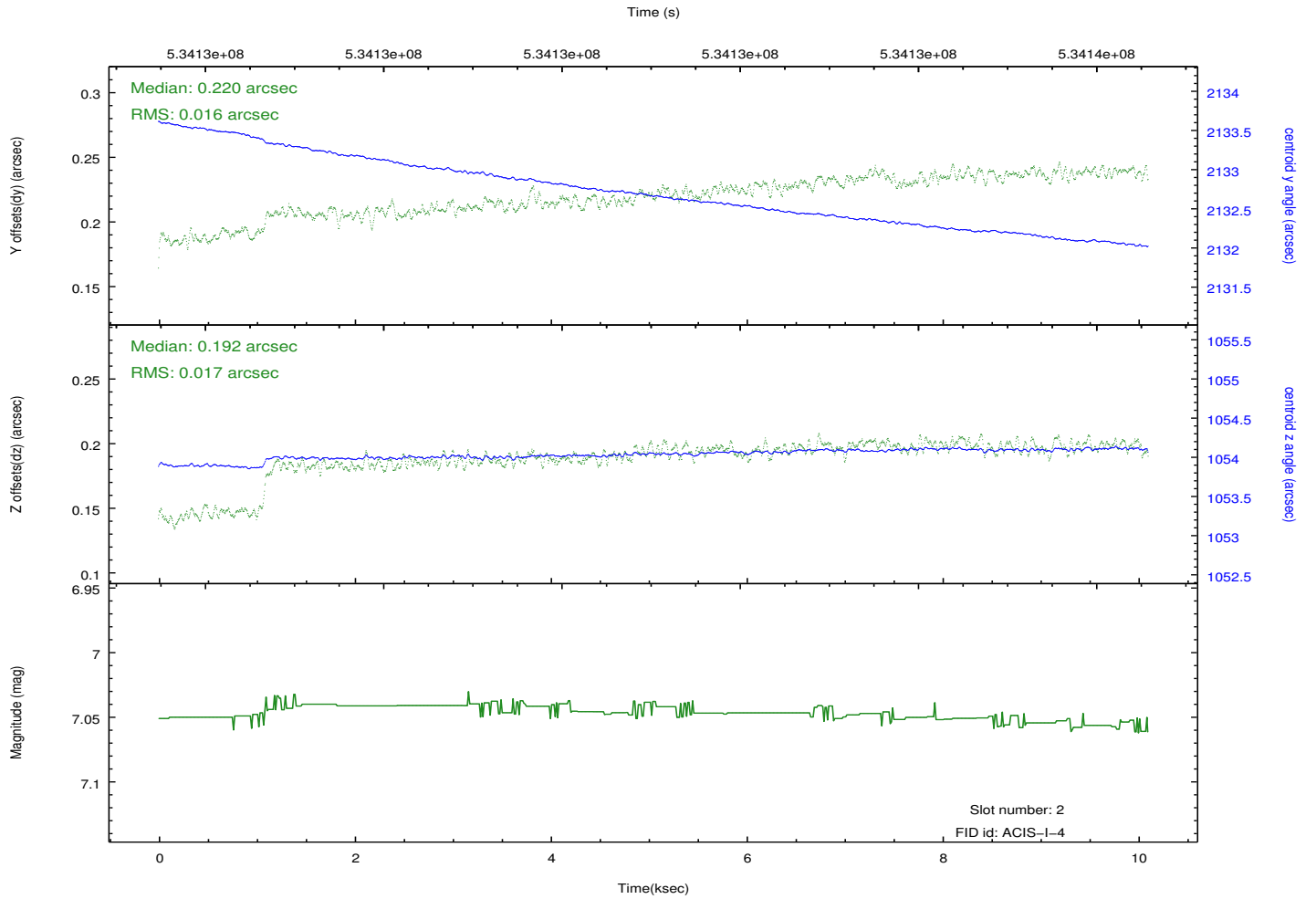
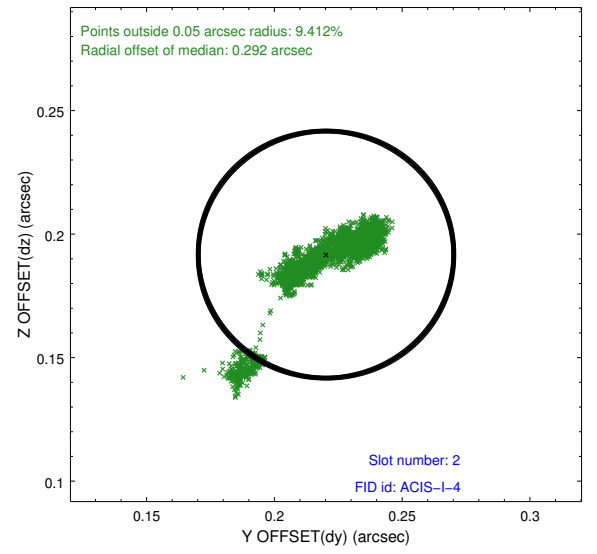
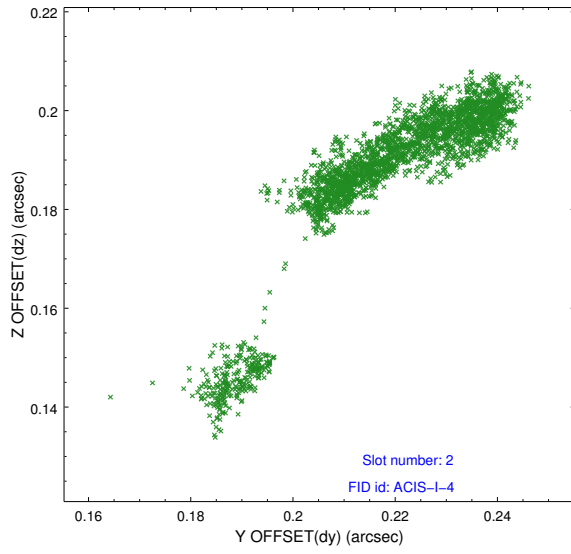
2.5.1 Slot 0



2.5.2 Slot 1



2.5.3 Slot 2



A Summary

A.1 Status

V&V Scientist	Jen Lauer
V&V Date (YYYY-MM-DD)	2014.12.08
V&V Edition	1
V&V Disposition and Status	OK
V&V Charge Time	10.084271905243

A.2 Comments

Roll preference met.