

V&V Reference Report

L2 ASCDS Version : 7.6.10

Observation 1524 - L2 Version 002
Chandra X-Ray Center

L2 Processing Date : May 12 2007

Contents

1	Front	2
2	OBI	3
2.1	OBI	3
2.1.1	Images	3
2.1.2	Bias	3
2.1.3	Parameters	4
2.1.4	Events	4
2.2	Compared Parameters	5
2.3	Aspect	6
2.4	Star Slots	9
2.4.1	Slot 3	9
2.4.2	Slot 4	10
2.4.3	Slot 5	11
2.4.4	Slot 6	12
2.4.5	Slot 7	13
2.5	FID Slots	14
2.5.1	Slot 0	14
2.5.2	Slot 1	15
2.5.3	Slot 2	16
3	Gratings	17
3.1	HEG Arm	17
3.2	MEG Arm	19
A	Summary	21
A.1	Status	21
A.2	Comments	21

1 Front

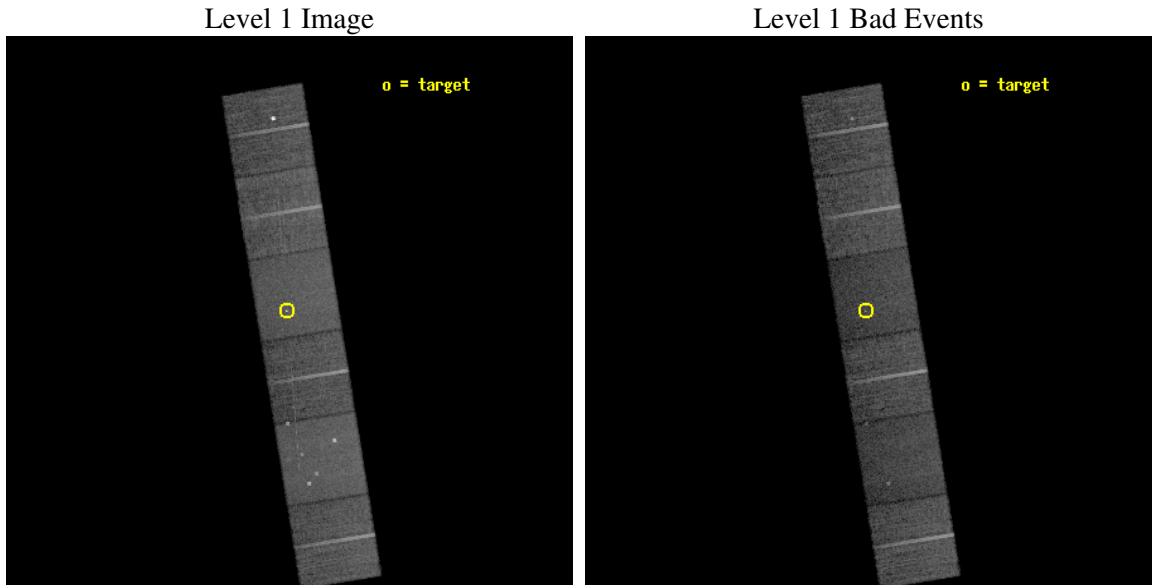
seq_num	200035
obs_id	1524
title	MEASURING DOPPLER SHIFTS OF X-RAY LINES TO DETERMINE THE STELLAR WIND X-RAY LOCATIONS IN OB STARS
observer	Wayne Waldron
object	ZETA ORI
dtcycle	0
cycle	P
ra_targ	85.189583
dec_targ	-1.942778
ra_nom	85.185272402457
dec_nom	-1.9575938212722
roll_nom	260.71350144544
revision	4
ontime	13961.477062568
livetime	13784.68843341
ontime4	13958.236102328
ontime5	13961.477062568
ontime6	13961.477062568
ontime7	13961.477062568
ontime8	13958.236082405
ontime9	13958.236102328
l2events	142024



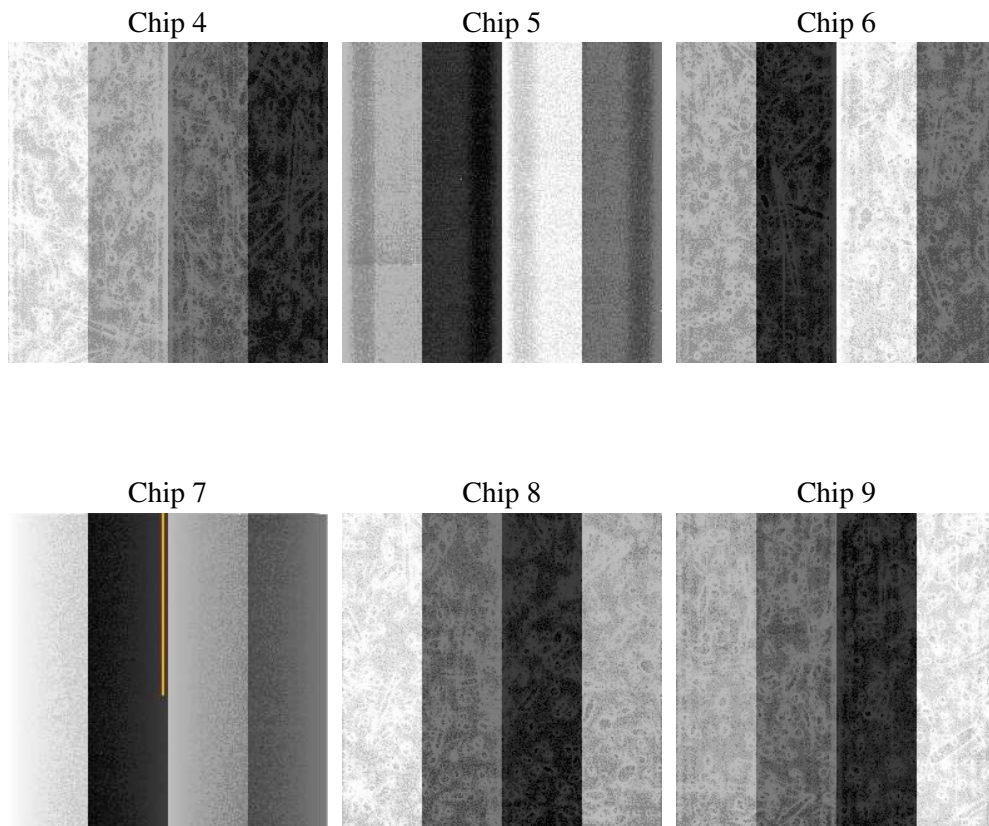
2 OBI

2.1 OBI

2.1.1 Images



2.1.2 Bias



2.1.3 Parameters

obi_num	1
ascdsver	7.6.10
caldbver	3.3.0
date	2007-05-12T03:39:17
revision	4

sched_exp_time	14000.000000
ontime	13961.477062568
ontime4	13958.236102328
ontime5	13961.477062568
ontime6	13961.477062568
ontime7	13961.477062568
ontime8	13958.236082405
ontime9	13958.236102328
l1events	676088

2.1.4 Events

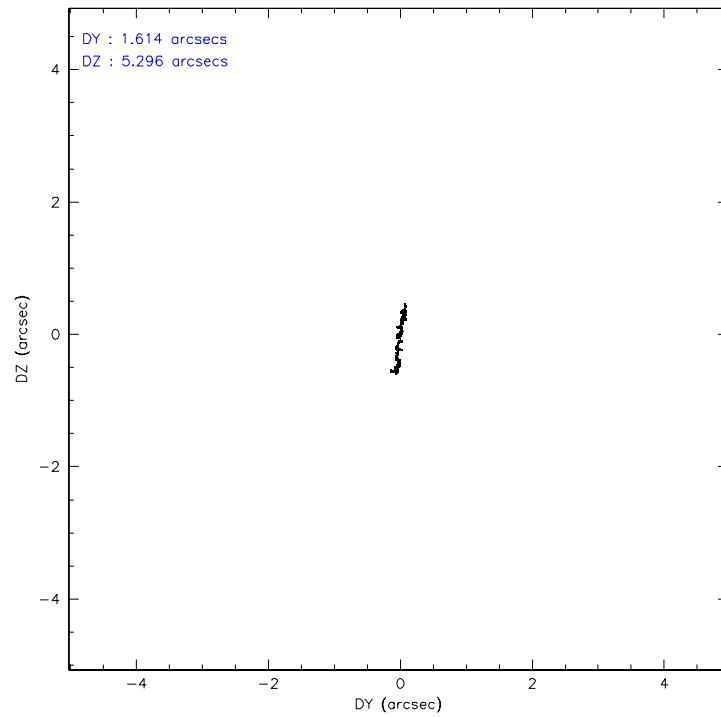
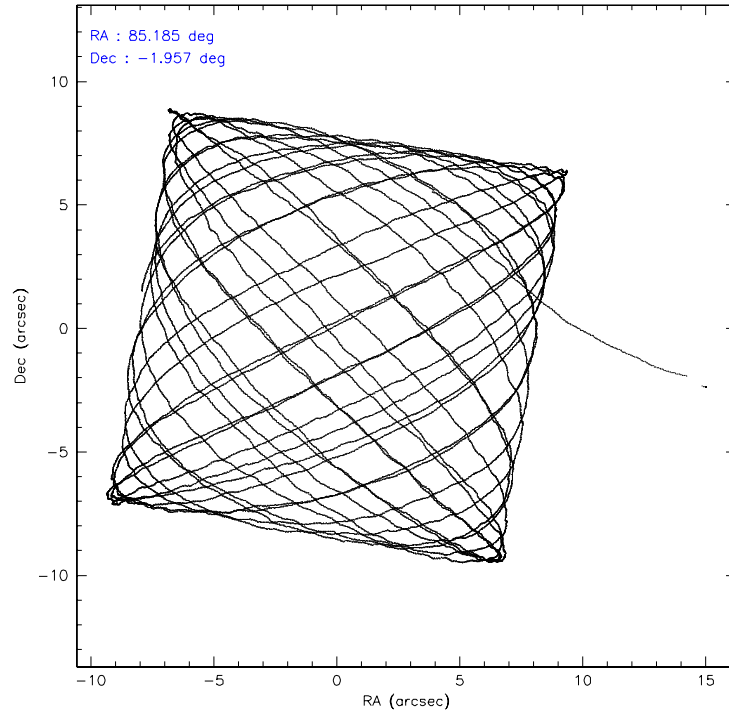
	ccd 4	ccd 5	ccd 6	ccd 7	ccd 8	ccd 9
level 1 events	109911	127256	98365	115960	121688	102908
rejected events	98328	66179	87256	66277	98669	84363
rejected %	89%	52%	88%	57%	81%	81%

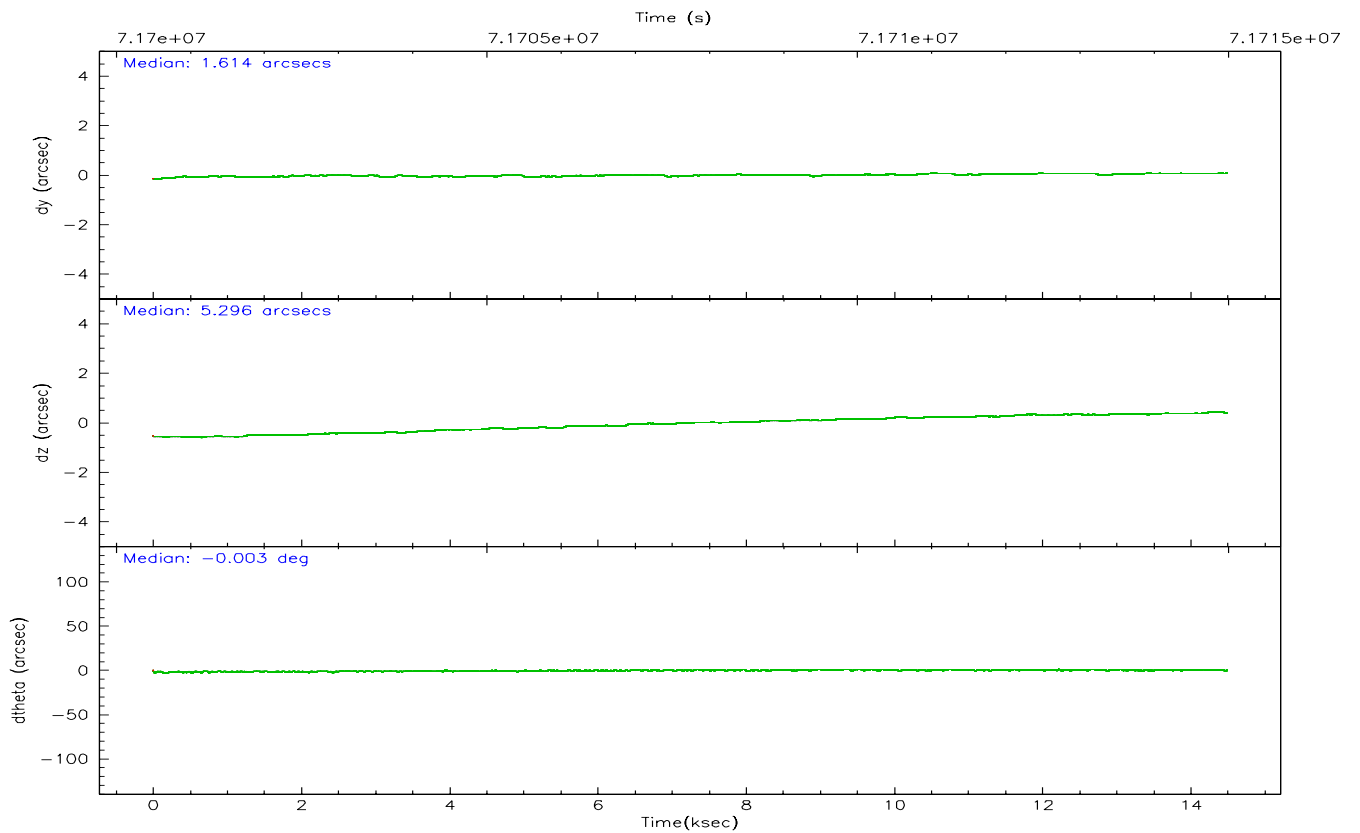
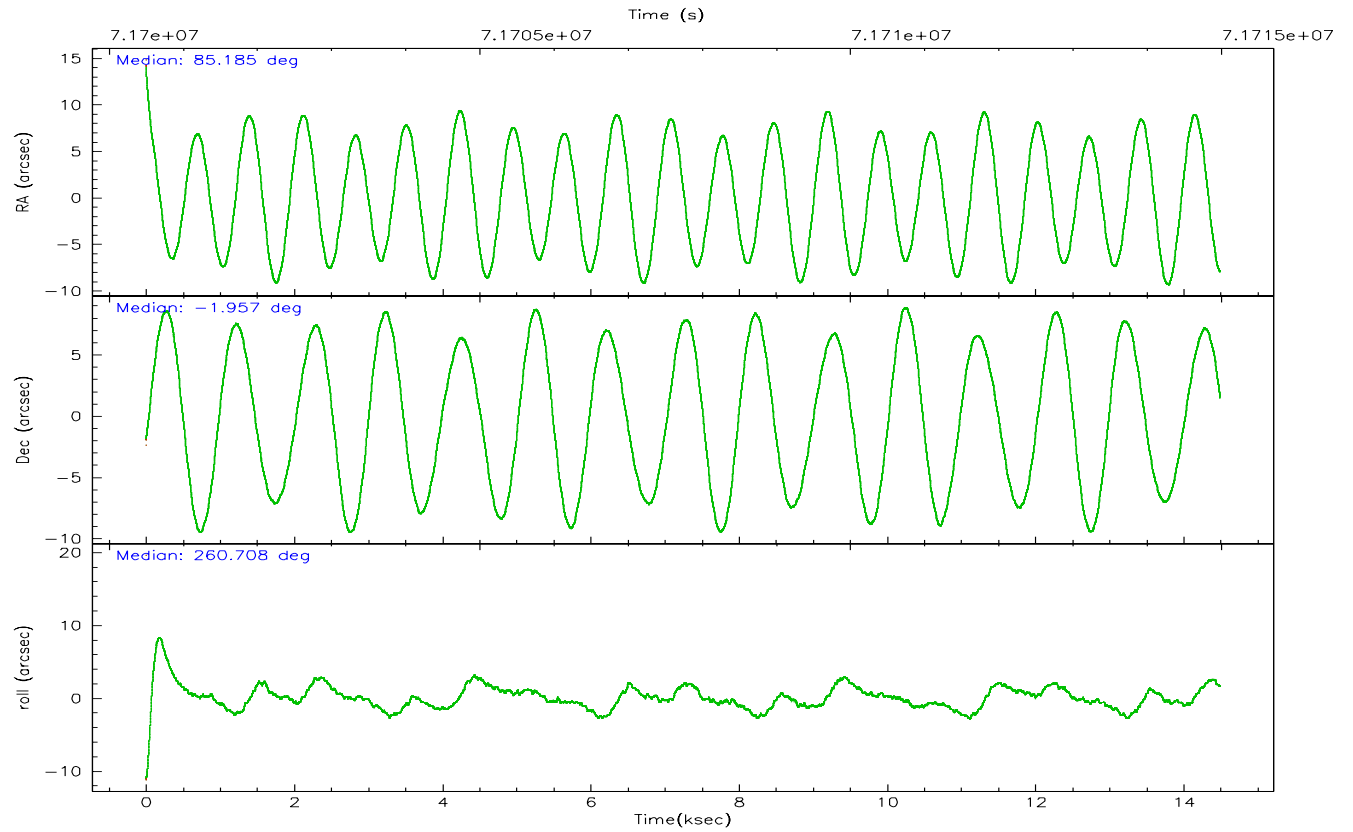
	ccd 4	ccd 5	ccd 6	ccd 7	ccd 8	ccd 9
grade 0 events	5129	8500	4797	5204	7702	11166
	4%	6%	4%	4%	6%	10%
grade 1 events	44	259	41	163	72	275
	0%	0%	0%	0%	0%	0%
grade 2 events	2589	17286	2051	9829	4730	2152
	2%	13%	2%	8%	3%	2%
grade 3 events	1043	2717	1126	4673	2542	1017
	0%	2%	1%	4%	2%	0%
grade 4 events	1024	2655	1081	4603	2257	2080
	0%	2%	1%	3%	1%	2%
grade 5 events	3045	9858	3575	11163	4496	3706
	2%	7%	3%	9%	3%	3%
grade 6 events	1801	29929	2057	25387	5790	2134
	1%	23%	2%	21%	4%	2%
grade 7 events	95236	56052	83637	54938	94099	80378
	86%	44%	85%	47%	77%	78%

2.2 Compared Parameters

Parameter	Planned	Actual	Parameter	Planned	Actual
Instrument	ACIS	ACIS	Obspar format version number	6	6
Detector	ACIS-456789	ACIS-456789	Obspar file type	PREDICTED	ACTUAL
Grating	HETG	HETG	Obspar update status	NONE	UPDATED
Data mode	VFAINT	VFAINT	Number of optional ACIS chips dropped	0	0
Observation mode	POINTING	POINTING	On-chip summing requested	N	N
Pointing RA	85.175485	85.1852724024572	Subarray requested	NONE	NONE
Pointing Dec	-1.931991	-1.957593821272239	Alternating exposures requested	N	N
Pointing Roll	260.556554	260.7135014454406	Primary exposure time	3.200000	3.2
SIM focus pos (mm)	-0.684267	-0.6828225247311905			
SIM defocus (mm)	0	0.001444936568705701			
SIM translation stage pos (mm)	-190.132523	-187.1228876879999			
SIM translation stage offset (mm)	0	-3.009634895007935			
Observation start time	71700984.184000	71699867.61635			
Observation start date	2000-04-09T20:55:20	2000-04-09T20:37:47			
Observation end time	71714984.184000	71715905.79193801			
Observation end date	2000-04-10T00:48:40	2000-04-10T01:05:05			
Read mode	TIMED	TIMED			

2.3 Aspect



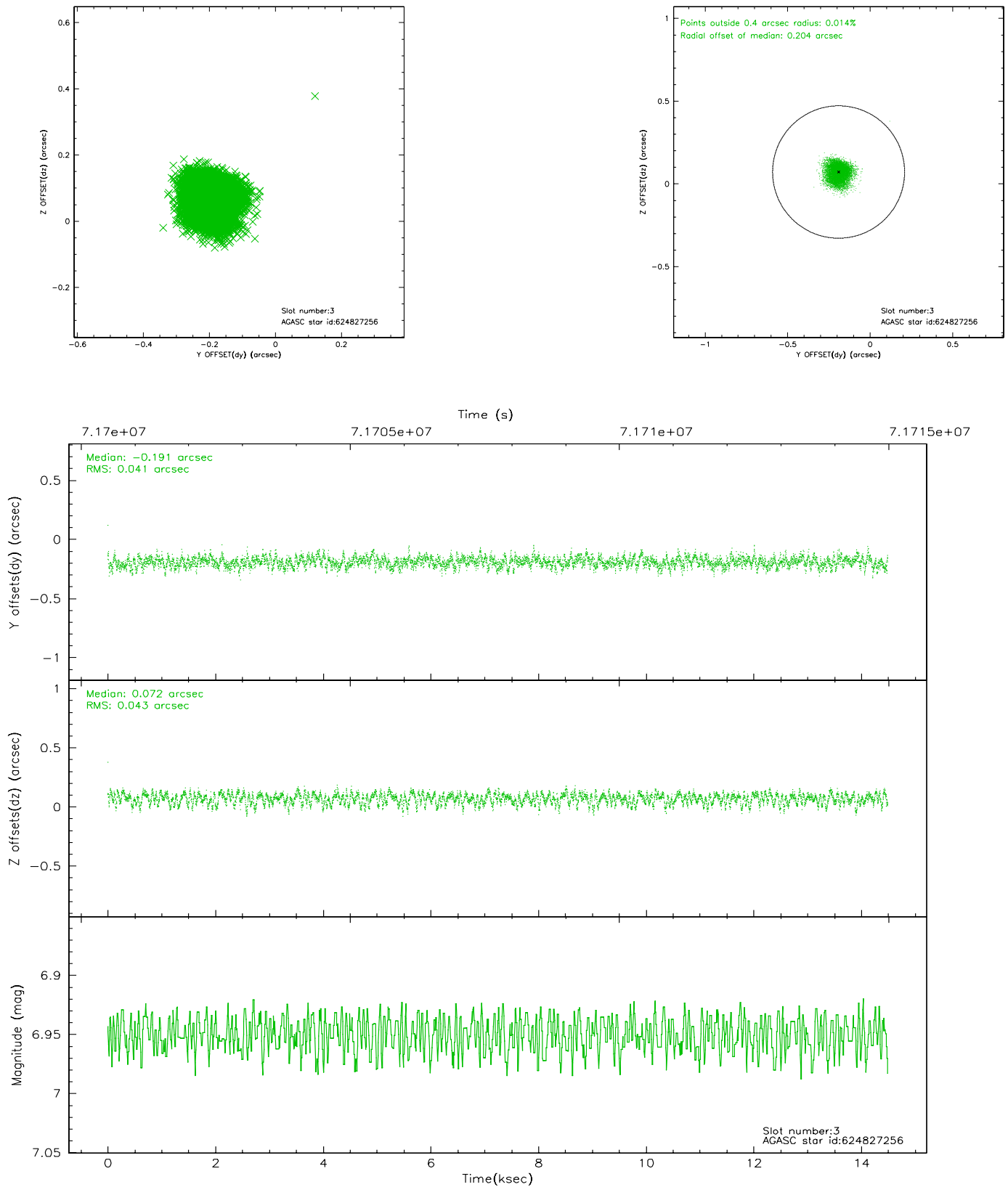


Slot Statistics

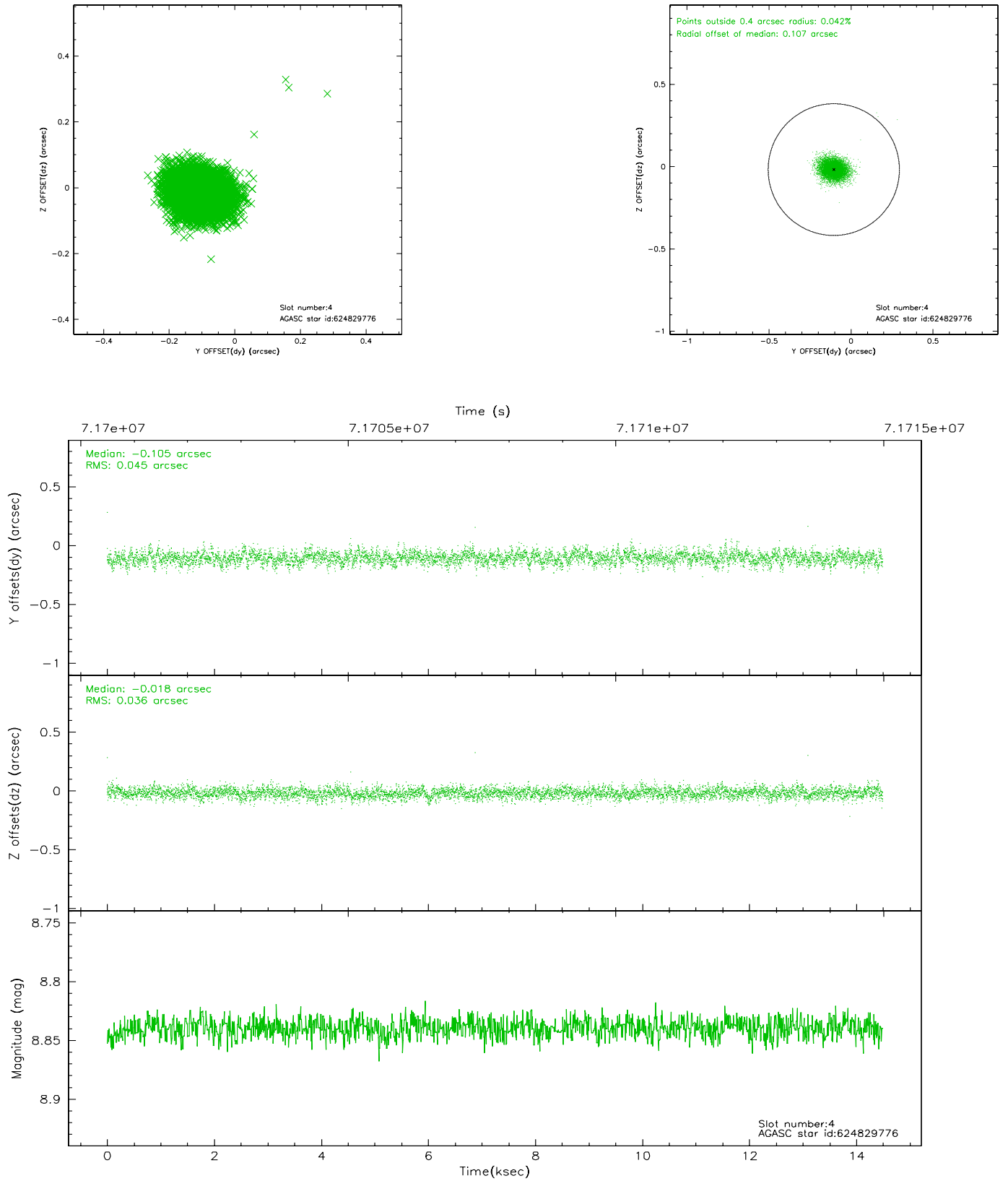
slot	status	id	mag	n_pts	med_dy	med_dz	dr1	dr2	ra	dec	mean_y	mean_z
0	FID	ACIS-S-2	7.10	3532	-0.019	-0.029	0.011	0.019	0.000000	0.000000	-754.07	-1788.51
1	FID	ACIS-S-4	7.20	3532	-0.047	0.017	0.006	0.010	0.000000	0.000000	2159.08	119.60
2	FID	ACIS-S-5	7.24	3532	0.035	0.021	0.010	0.017	0.000000	0.000000	-1806.40	113.72
3	GUIDE	624827256	6.95	7065	-0.191	0.072	0.063	0.100	85.016618	-1.425471	-1704.12	-862.89
4	GUIDE	624829776	8.84	7063	-0.105	-0.018	0.060	0.101	84.830774	-1.274621	-2130.09	-1612.13
5	GUIDE	625352160	8.96	7063	0.475	-0.187	0.112	0.182	84.418648	-2.443564	2265.43	-2382.86
6	GUIDE	624828488	9.20	7062	-0.108	0.070	0.076	0.125	85.333320	-1.326548	-2242.13	202.69
7	GUIDE	624820368	9.50	7057	-0.072	0.064	0.106	0.165	84.520771	-1.858956	128.38	-2366.34

2.4 Star Slots

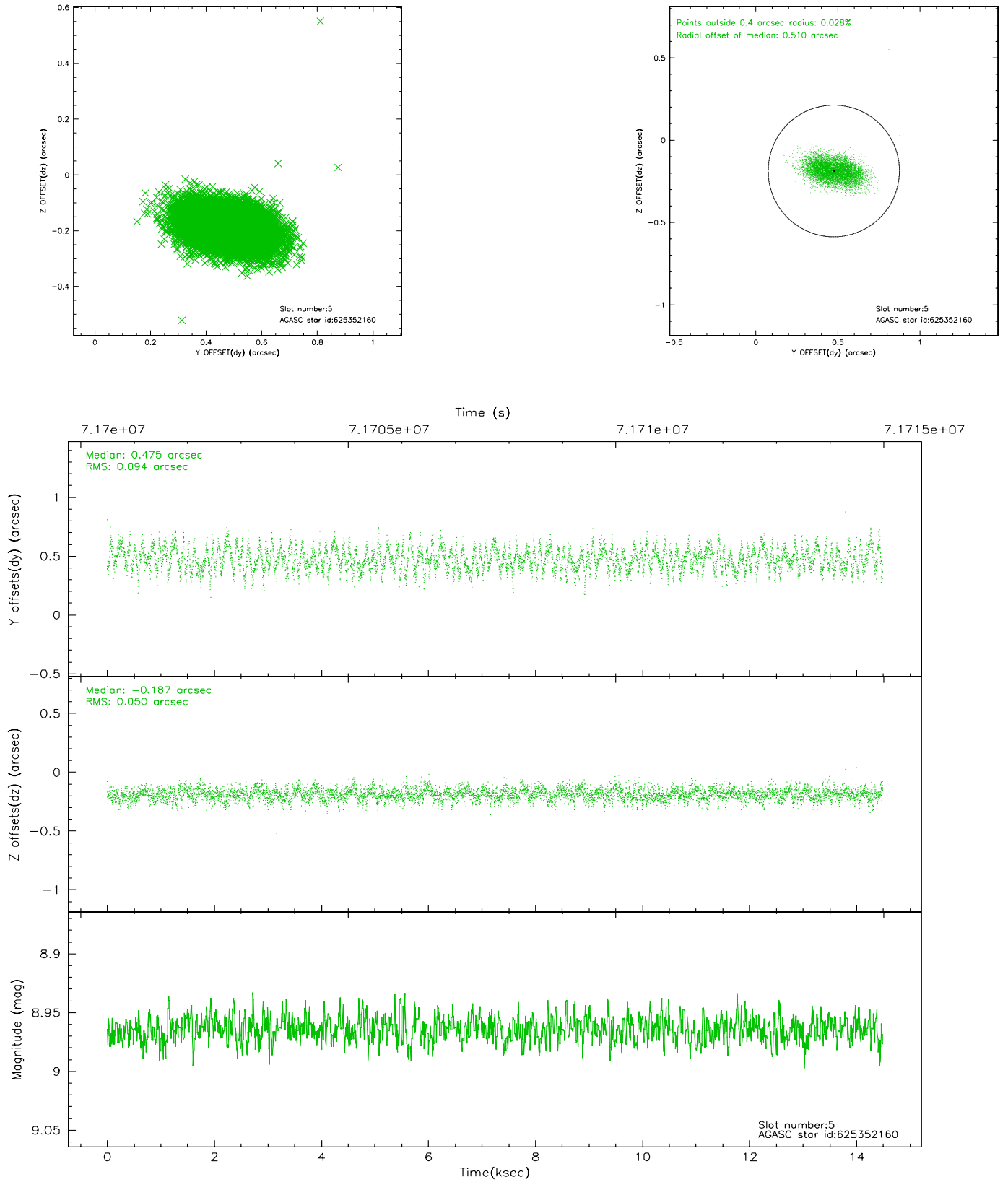
2.4.1 Slot 3



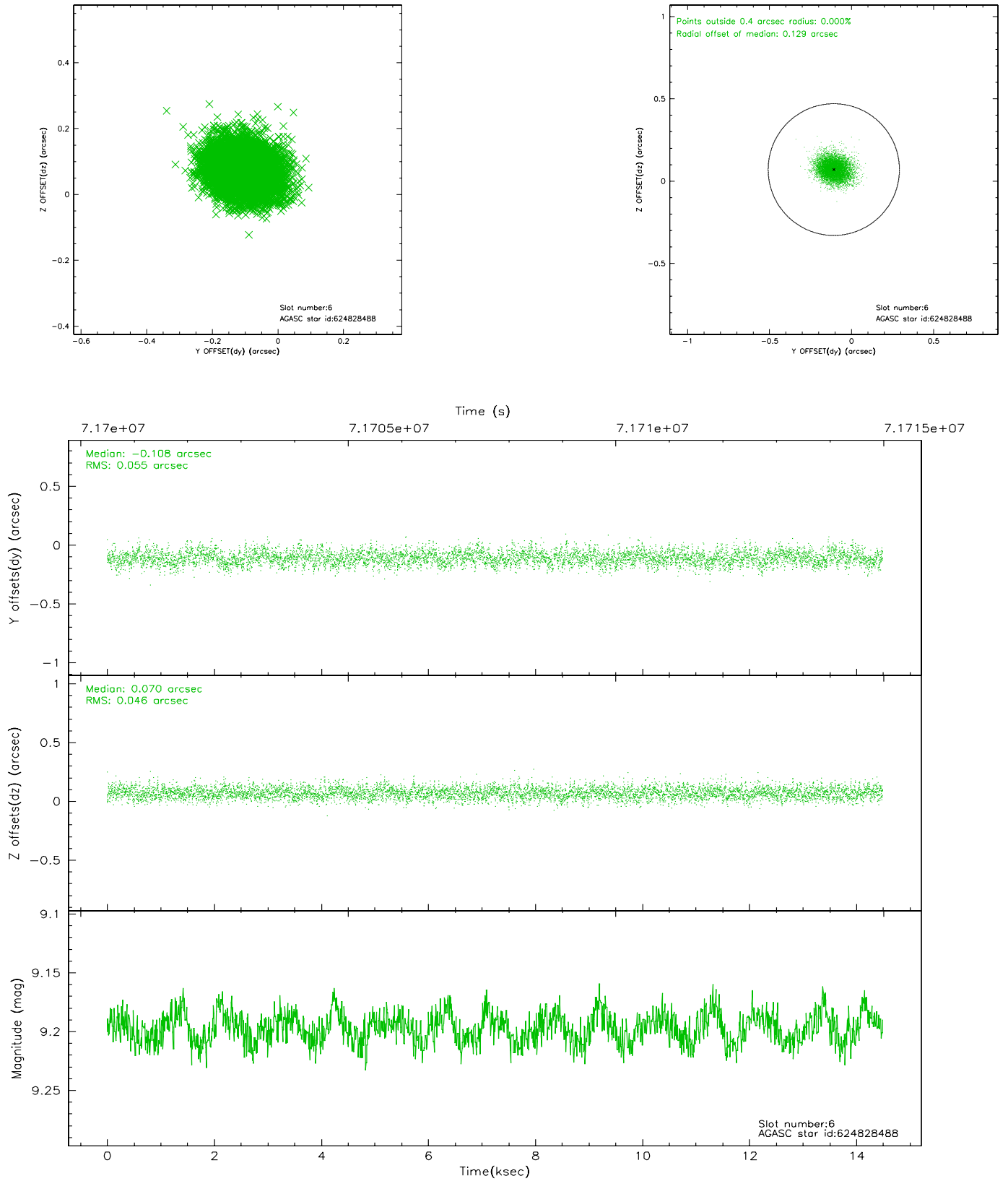
2.4.2 Slot 4



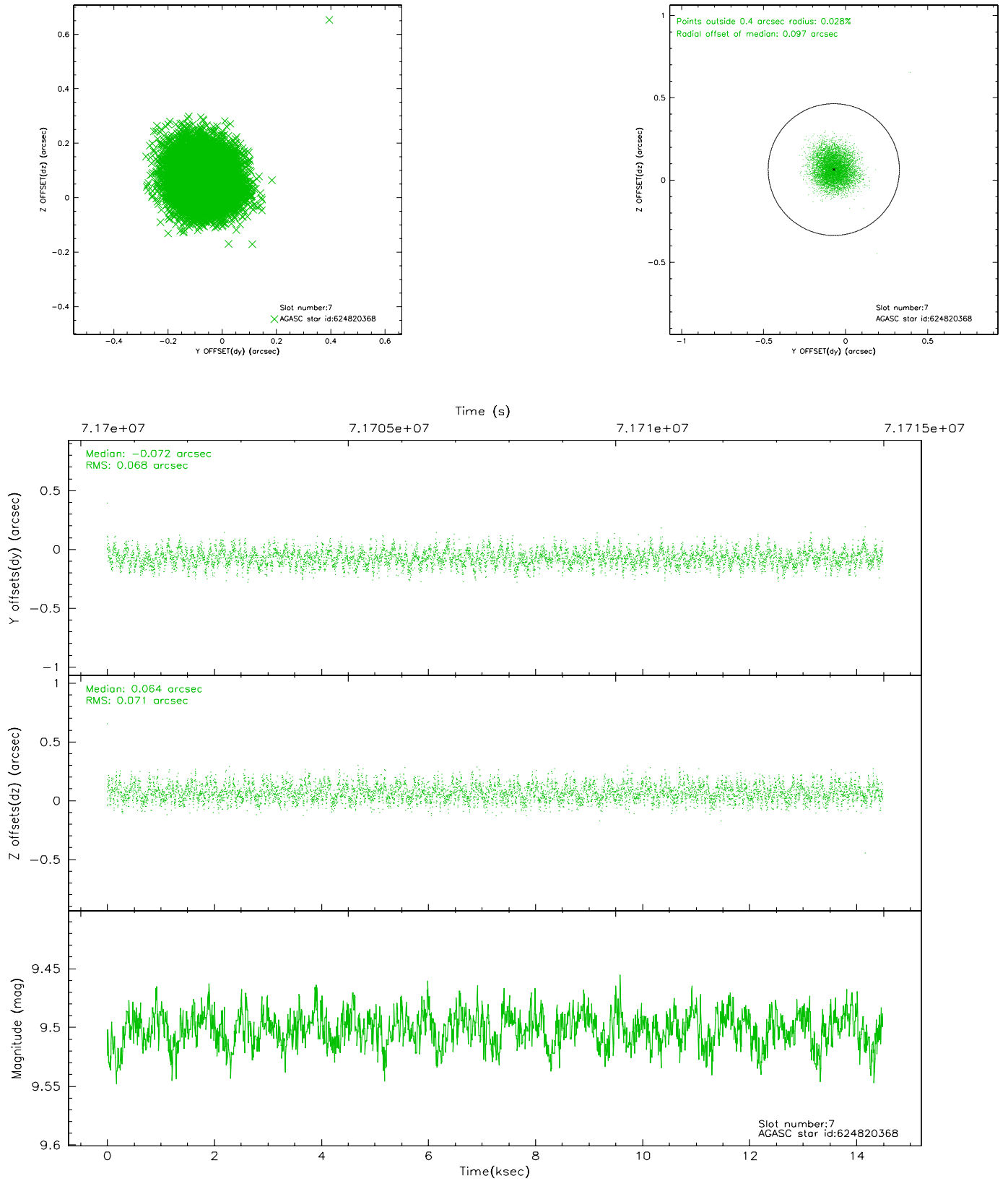
2.4.3 Slot 5



2.4.4 Slot 6

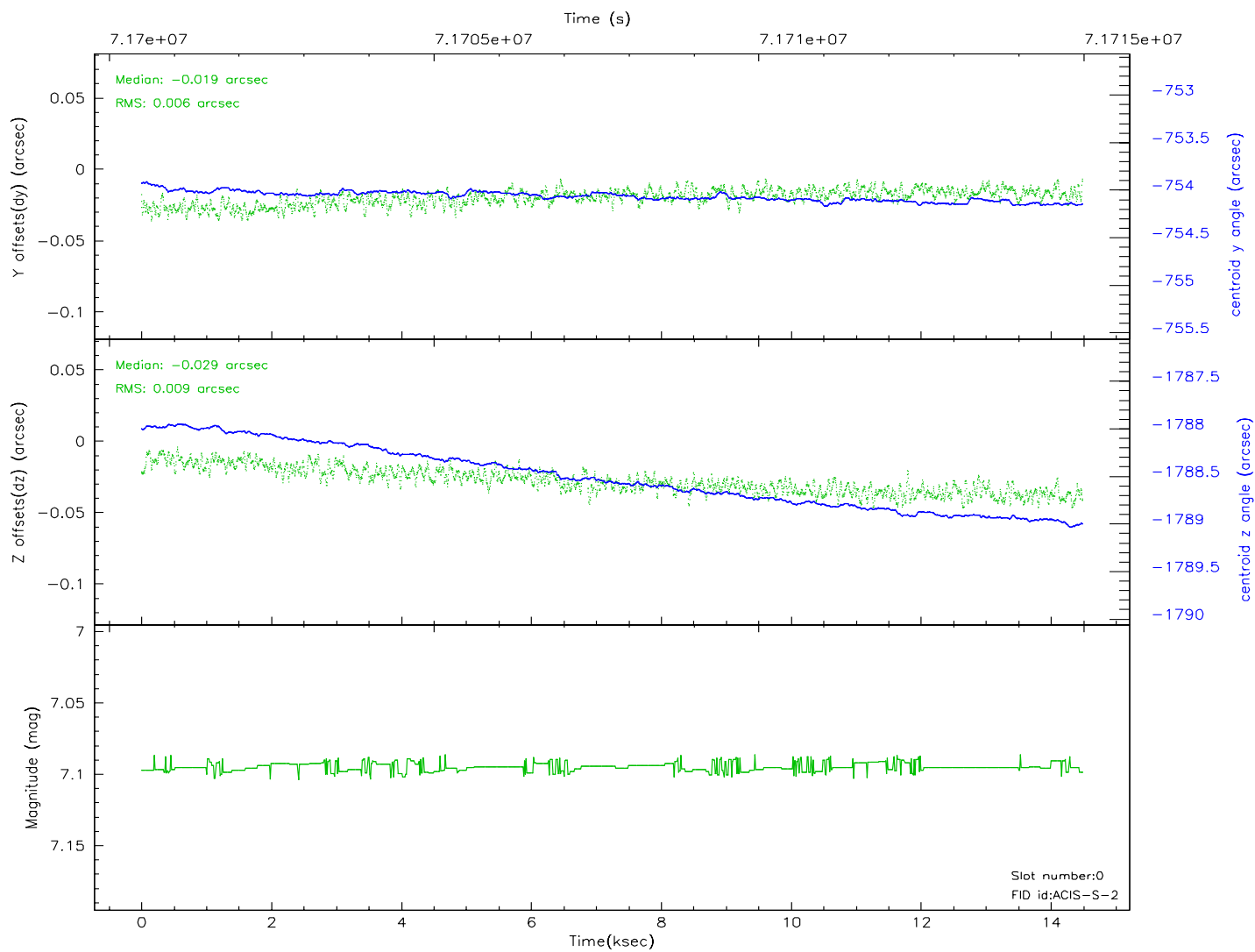
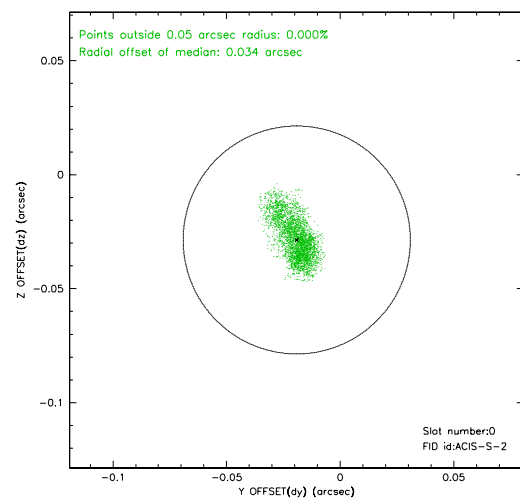
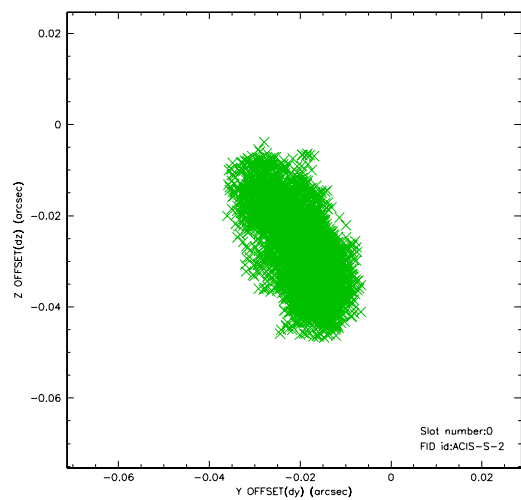


2.4.5 Slot 7

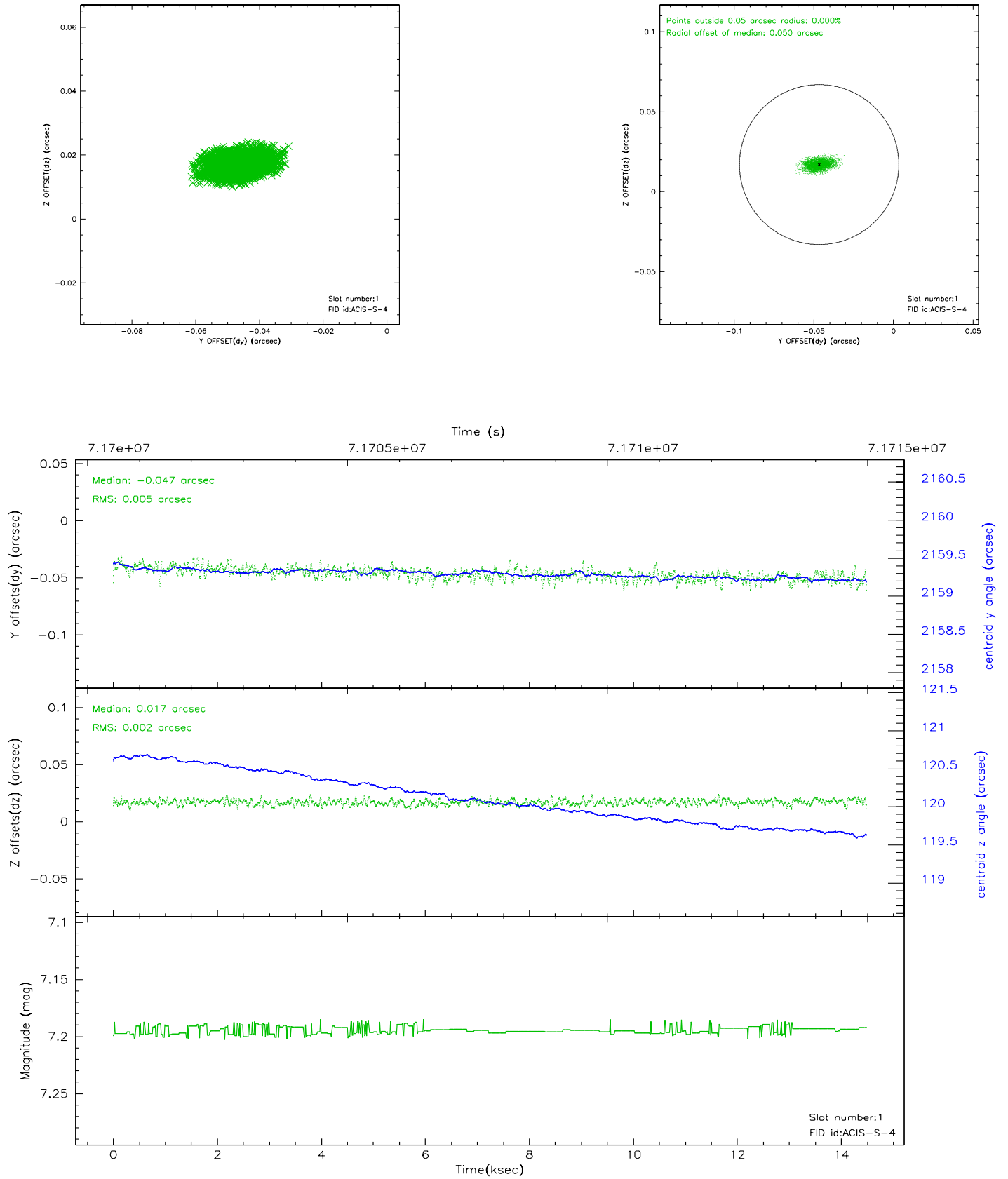


2.5 FID Slots

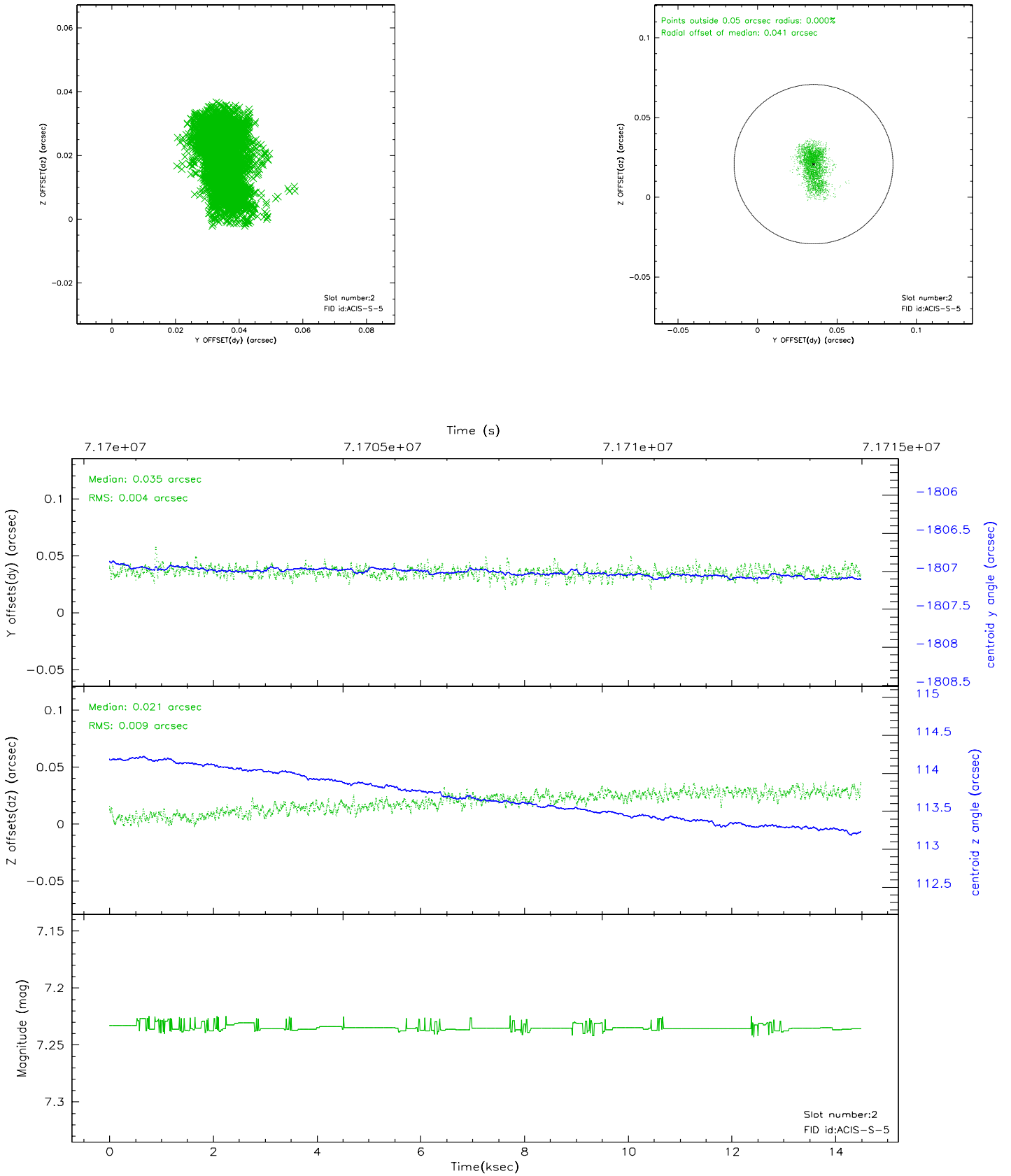
2.5.1 Slot 0



2.5.2 Slot 1



2.5.3 Slot 2

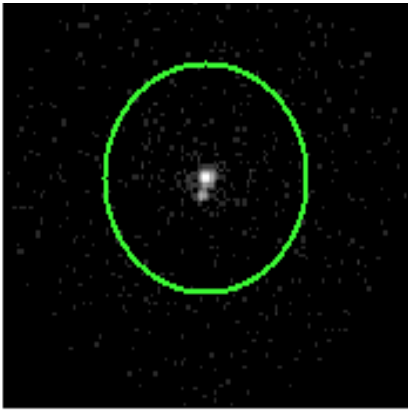


3 Gratings

3.1 HEG Arm



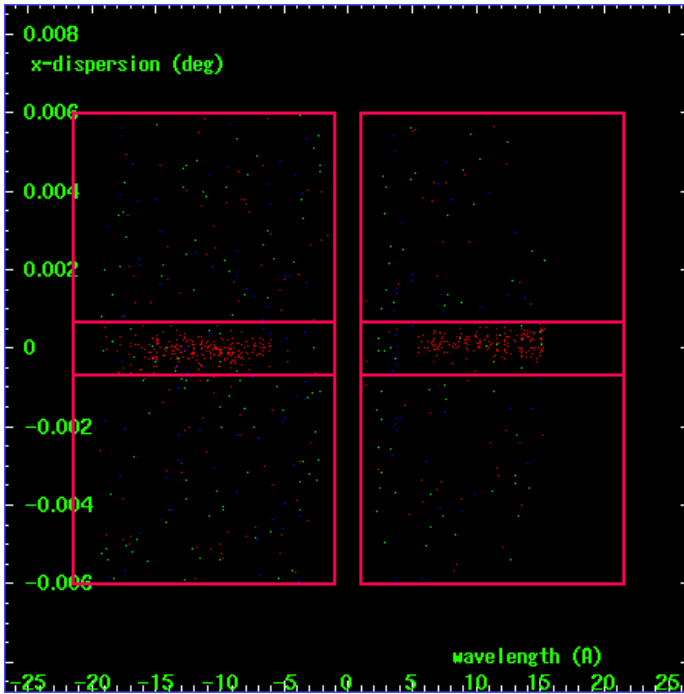
HEG Order Sort 123



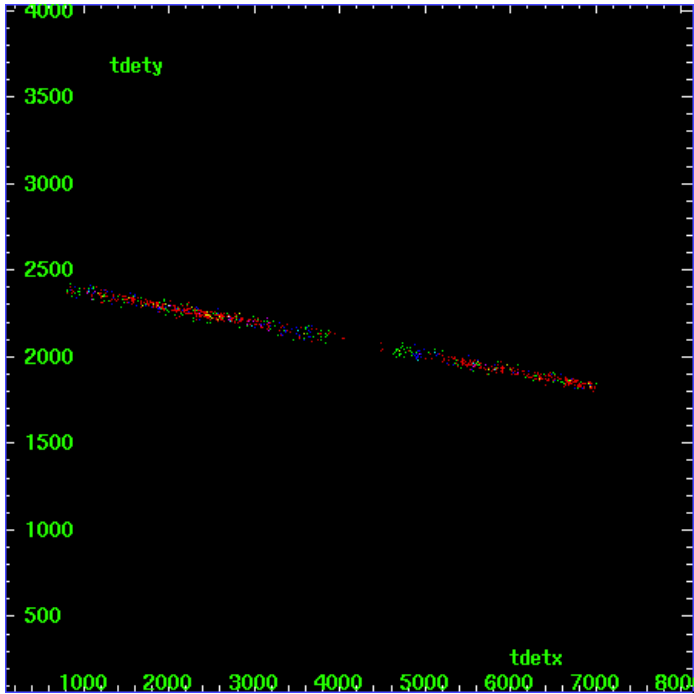
HEG Zero Order



HEG Order Sort ALL

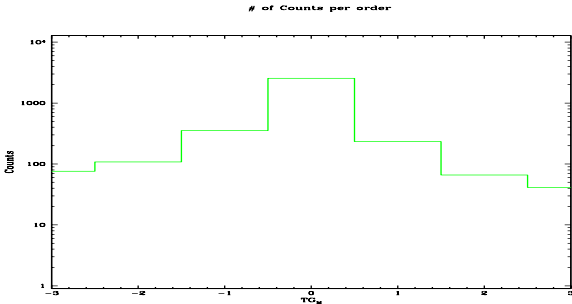


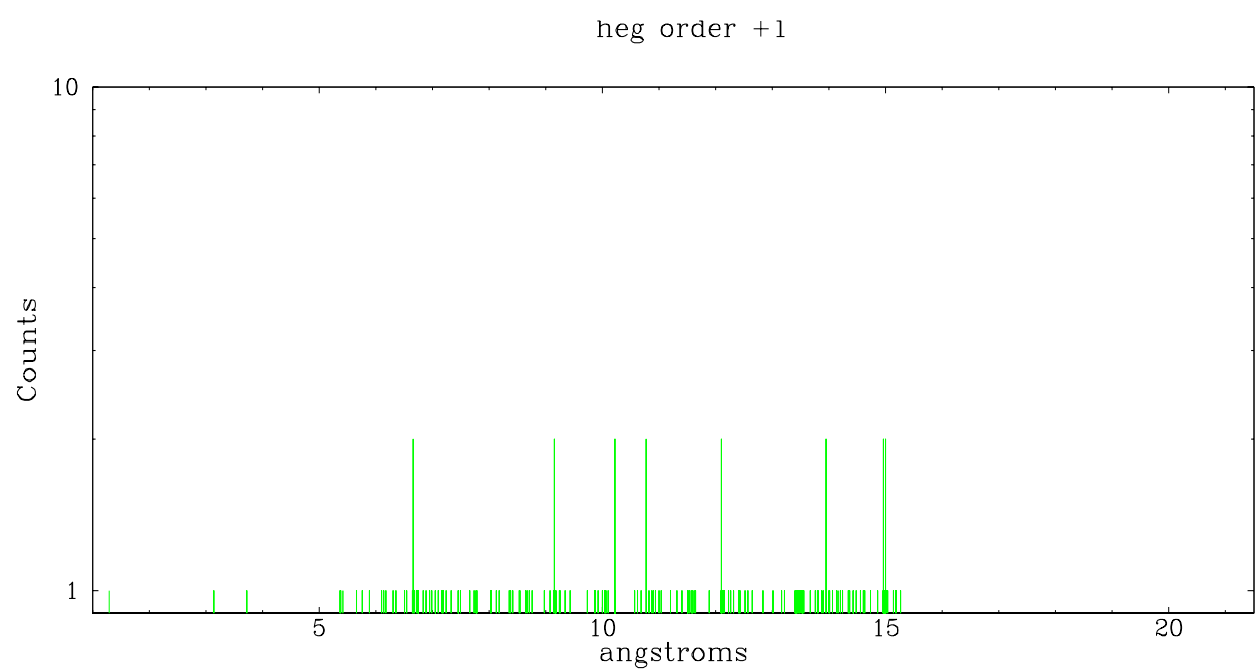
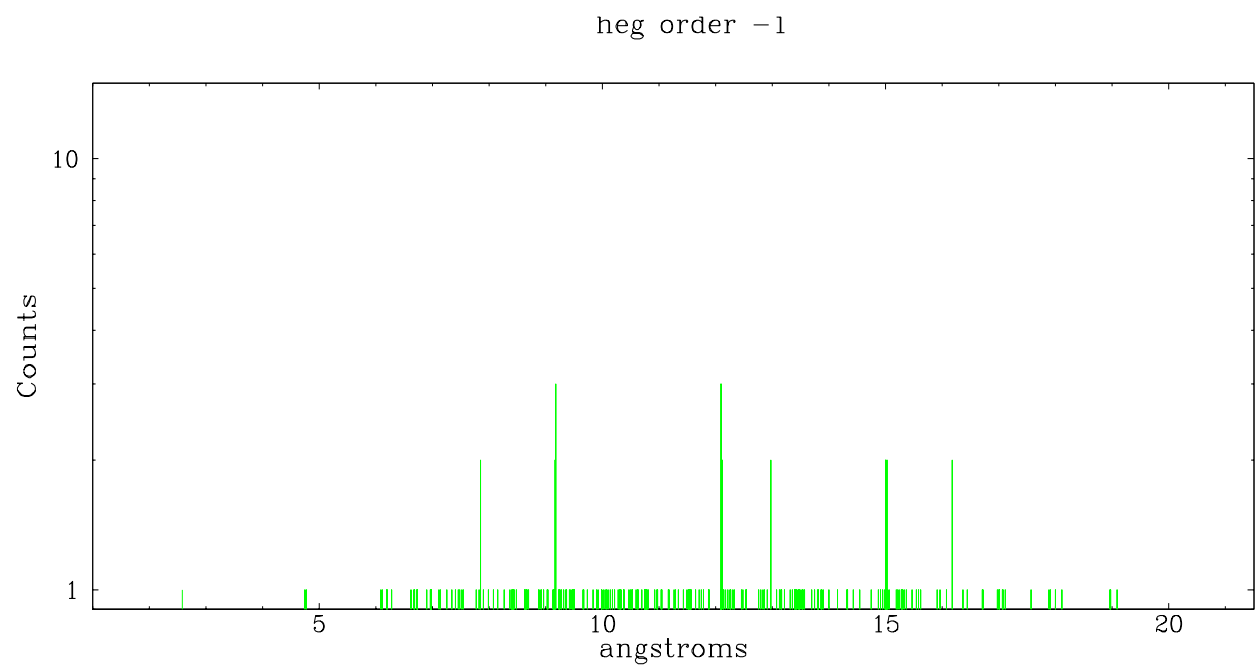
Spot Image HEG



Full Detector HEG

	order -3	order -2	order -1	order 0	order 1	order 2	order 3
Events	76	108	354	2555	233	66	41

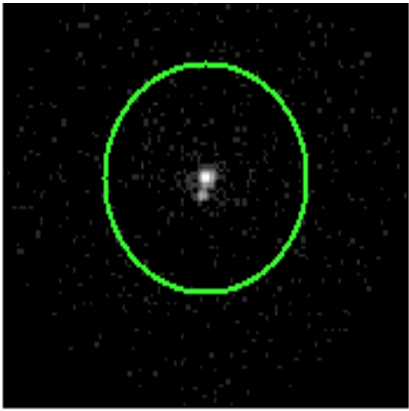




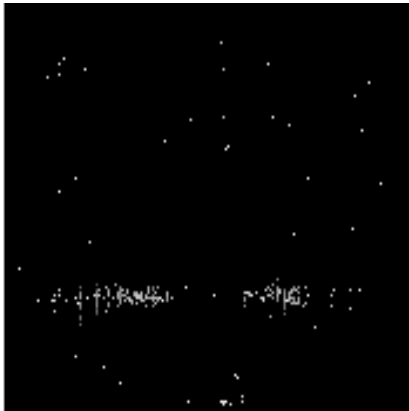
3.2 MEG Arm



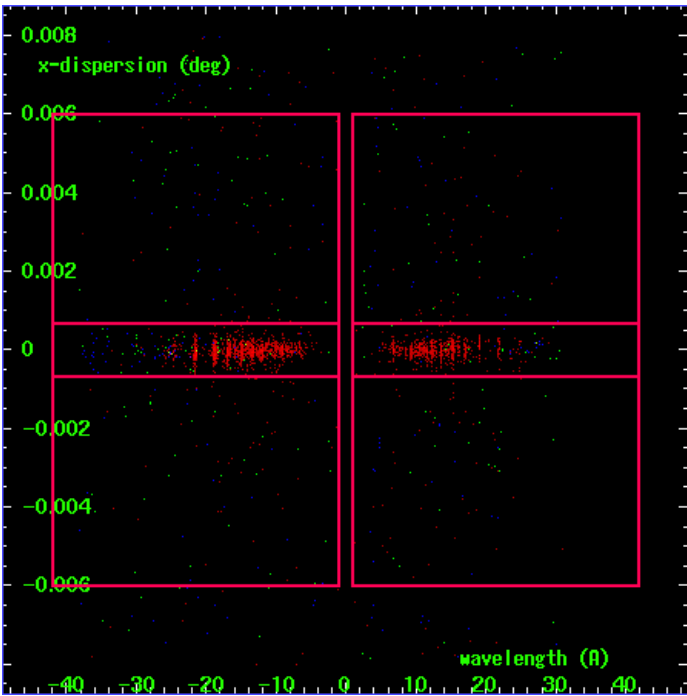
MEG Order Sort 123



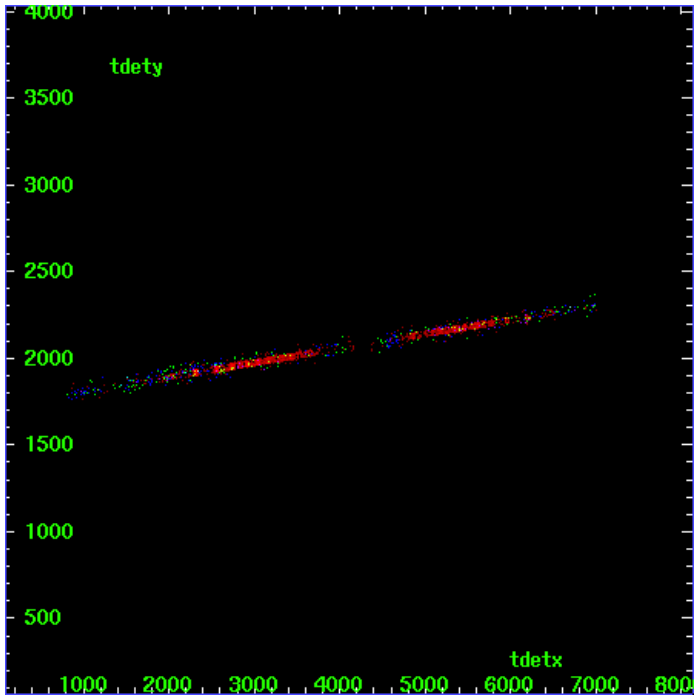
MEG Zero Order



MEG Order Sort ALL

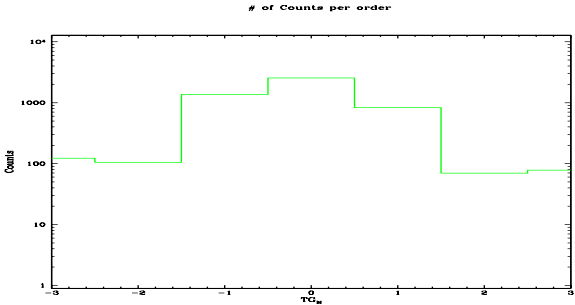


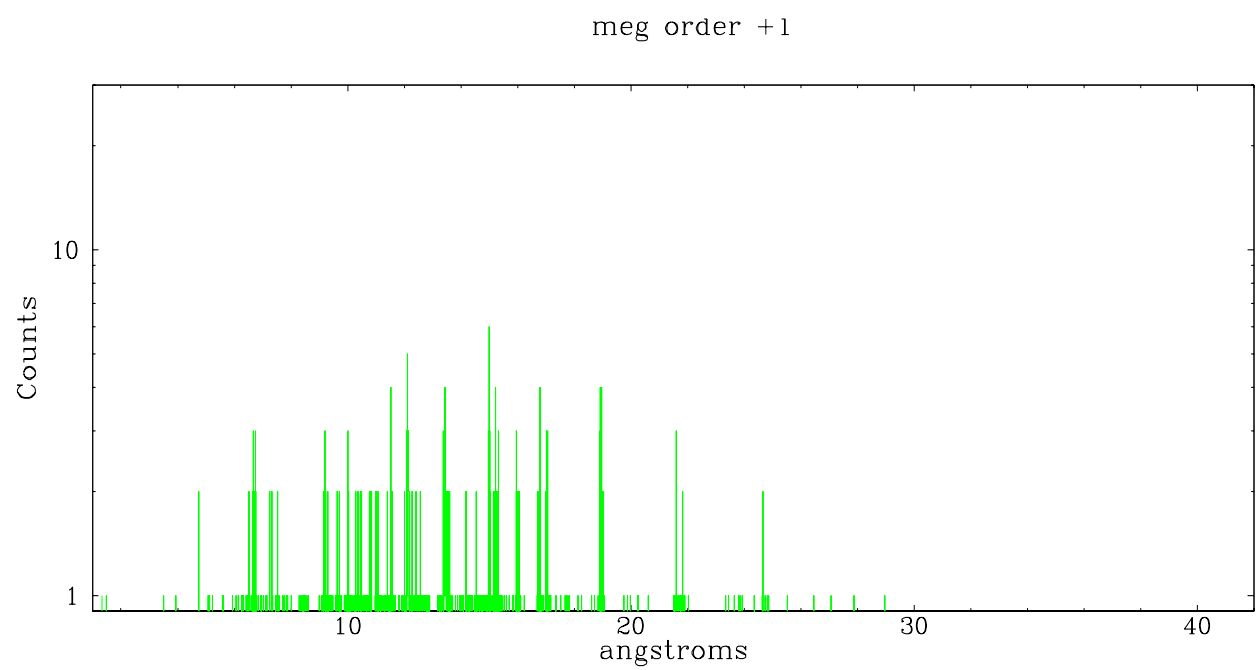
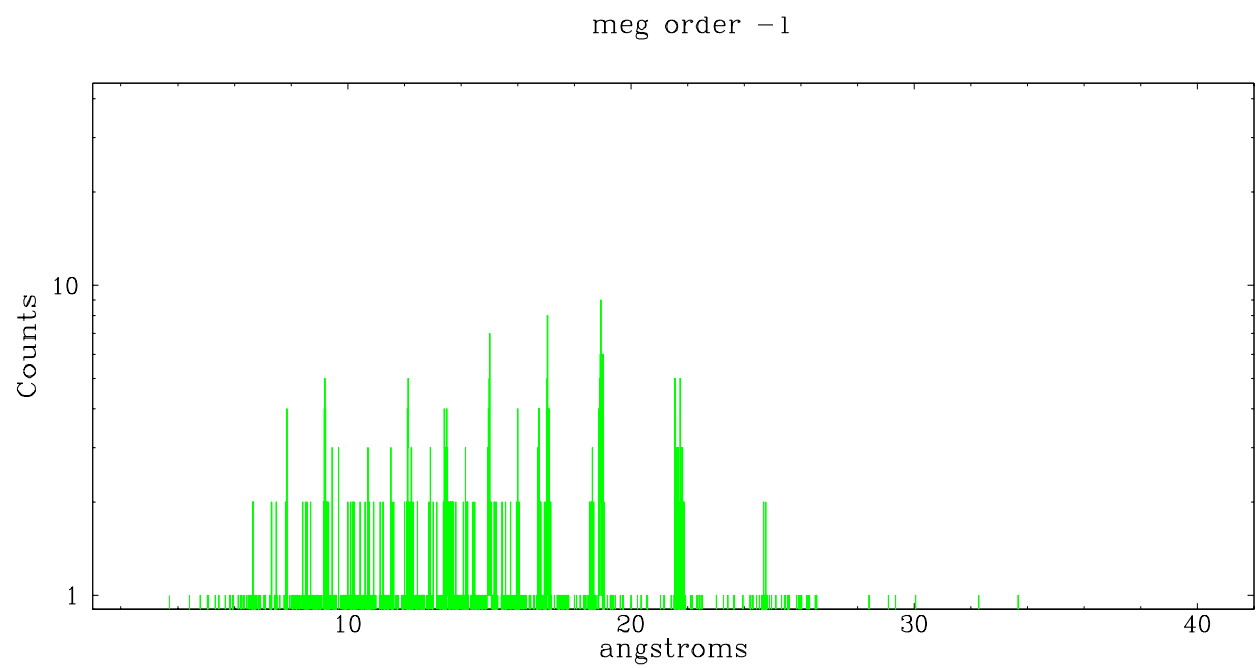
Spot Image MEG



Full Detector MEG

	order -3	order -2	order -1	order 0	order 1	order 2	order 3
Events	123	105	1373	2555	829	70	78





A Summary

A.1 Status

V&V Scientist	Joy Nichols
V&V Date (YYYY-MM-DD)	2007.05.22
V&V Edition	1
V&V Disposition and Status	OK
V&V Charge Time	13.961

A.2 Comments

Faint nearby source.