

V&V Reference Report

L2 ASCDS Version : 8.4.3

Observation 14274 - L2 Version 1
Chandra X-Ray Center

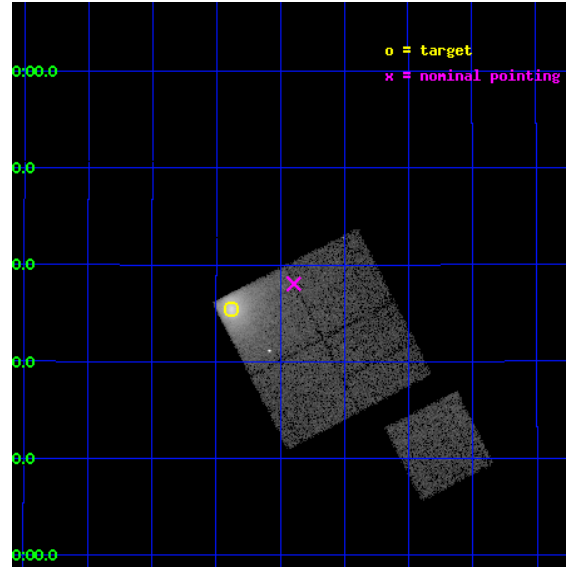
L2 Processing Date : Apr 2 2012

Contents

1	Front	2
2	OBI	3
2.1	OBI	3
2.1.1	Images	3
2.1.2	Bias	3
2.1.3	Parameters	4
2.1.4	Events	4
2.2	Compared Parameters	5
2.3	Aspect	6
2.4	Star Slots	9
2.4.1	Slot 3	9
2.4.2	Slot 4	10
2.4.3	Slot 5	11
2.4.4	Slot 6	12
2.4.5	Slot 7	13
2.5	FID Slots	14
2.5.1	Slot 0	14
2.5.2	Slot 1	15
2.5.3	Slot 2	16
A	Summary	17
A.1	Status	17
A.2	Comments	17

1 Front

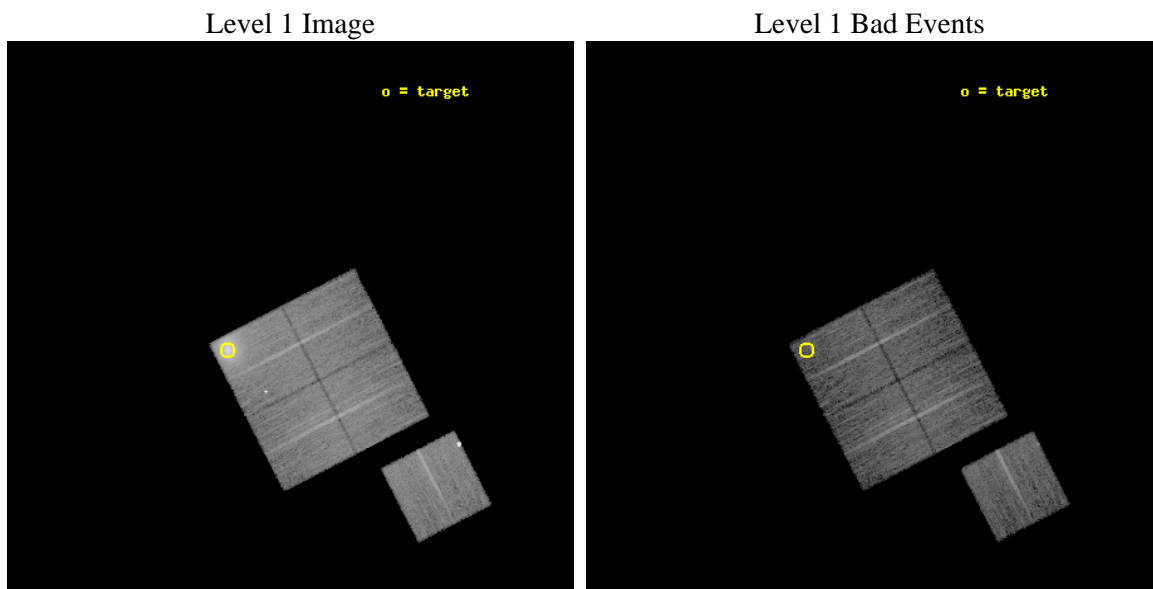
seq_num	890069	Sequence number
obs_id	14274	Observation id
title	AO-13 Calibration Observations of A1795	Proposal title
observer	Dr. CXC Calibration	Principal investigator
object	A1795	Source name
dtcycle	0	
cycle	P	events from which exps? Prim/Second/Both
ra_targ	207.219583	Observer's specified target RA [deg]
dec_targ	26.590833	Observer's specified target Dec [deg]
ra_nom	207.09843587075	Nominal RA [deg]
dec_nom	26.634070427619	Nominal Dec [deg]
roll_nom	152.74676001705	Nominal Roll [deg]
revision	1	Processing version of data
ontime	15080.582740605	Sum of GTIs [s]
livetime	14883.543824935	Livetime [s]
ontime0	15080.541700602	Sum of GTIs [s]
ontime1	15080.582740605	Sum of GTIs [s]
ontime2	15080.623780608	Sum of GTIs [s]
ontime3	15080.664820611	Sum of GTIs [s]
ontime6	15080.500660598	Sum of GTIs [s]
l2events	109554	Number of level 2 events



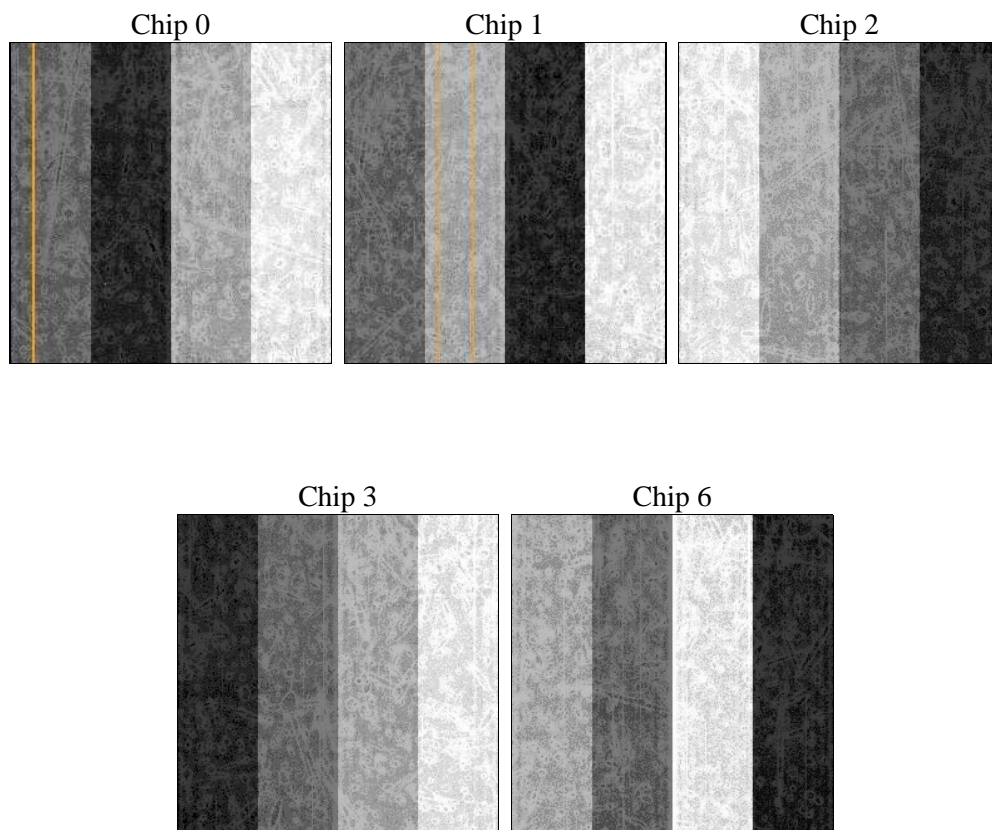
2 OBI

2.1 OBI

2.1.1 Images



2.1.2 Bias



2.1.3 Parameters

obi_num	0	Obi number	sched_exp_time	15000.000000	[s] Scheduled observation exposure time
ascdsver	8.4.3	Processing system revision	ontime	15080.582740605	Sum of GTIs [s]
caldbver	4.4.9	 	ontime0	15080.541700602	Sum of GTIs [s]
date	2012-04-03T02:41:58	Date and time of file creation	ontime1	15080.582740605	Sum of GTIs [s]
revision	1	Processing version of data	ontime2	15080.623780608	Sum of GTIs [s]
			ontime3	15080.664820611	Sum of GTIs [s]
			ontime6	15080.500660598	Sum of GTIs [s]
			l1events	490482	Number of level 1 events

2.1.4 Events

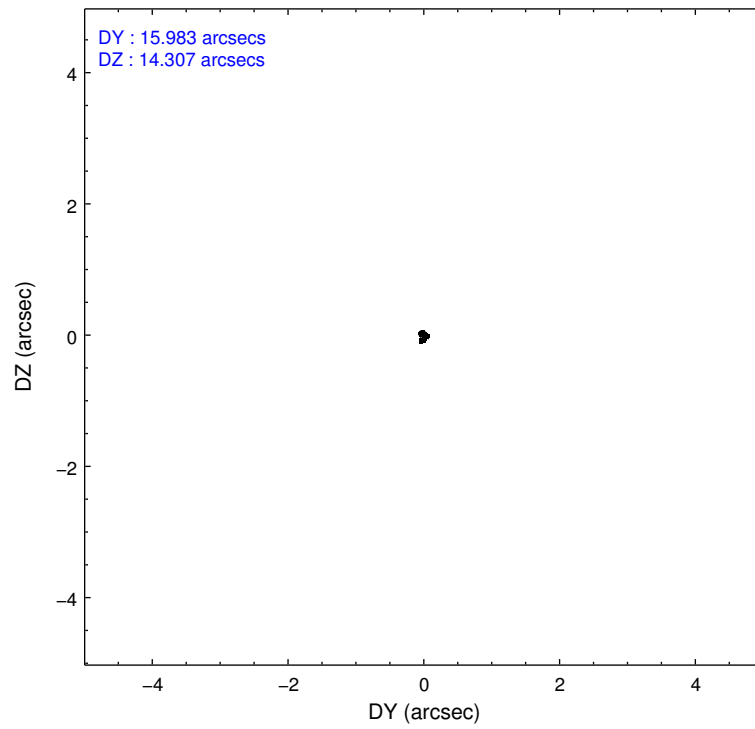
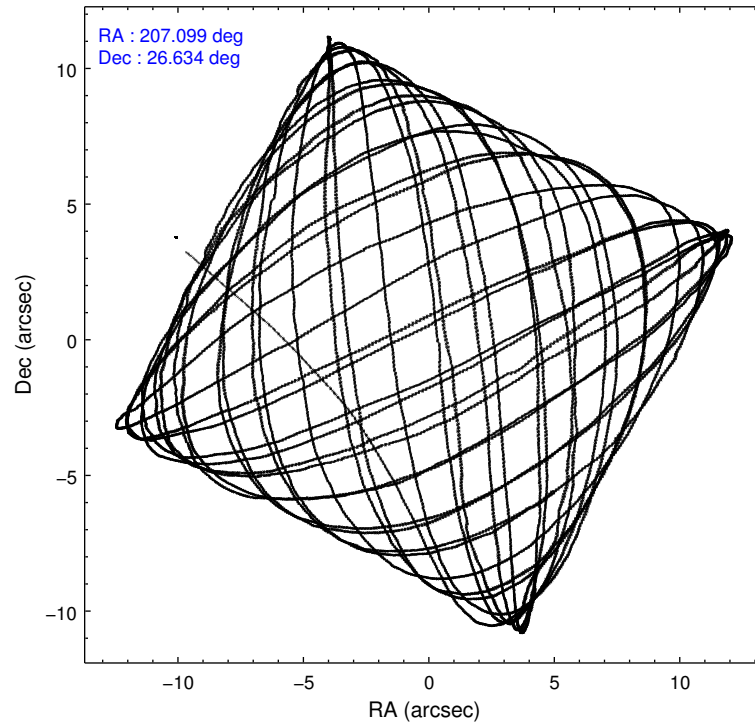
	ccd 0	ccd 1	ccd 2	ccd 3	ccd 6
level 1 events	77743	148481	84679	84790	94789
rejected events	66387	70111	74756	74498	75507
rejected %	85%	47%	88%	87%	79%

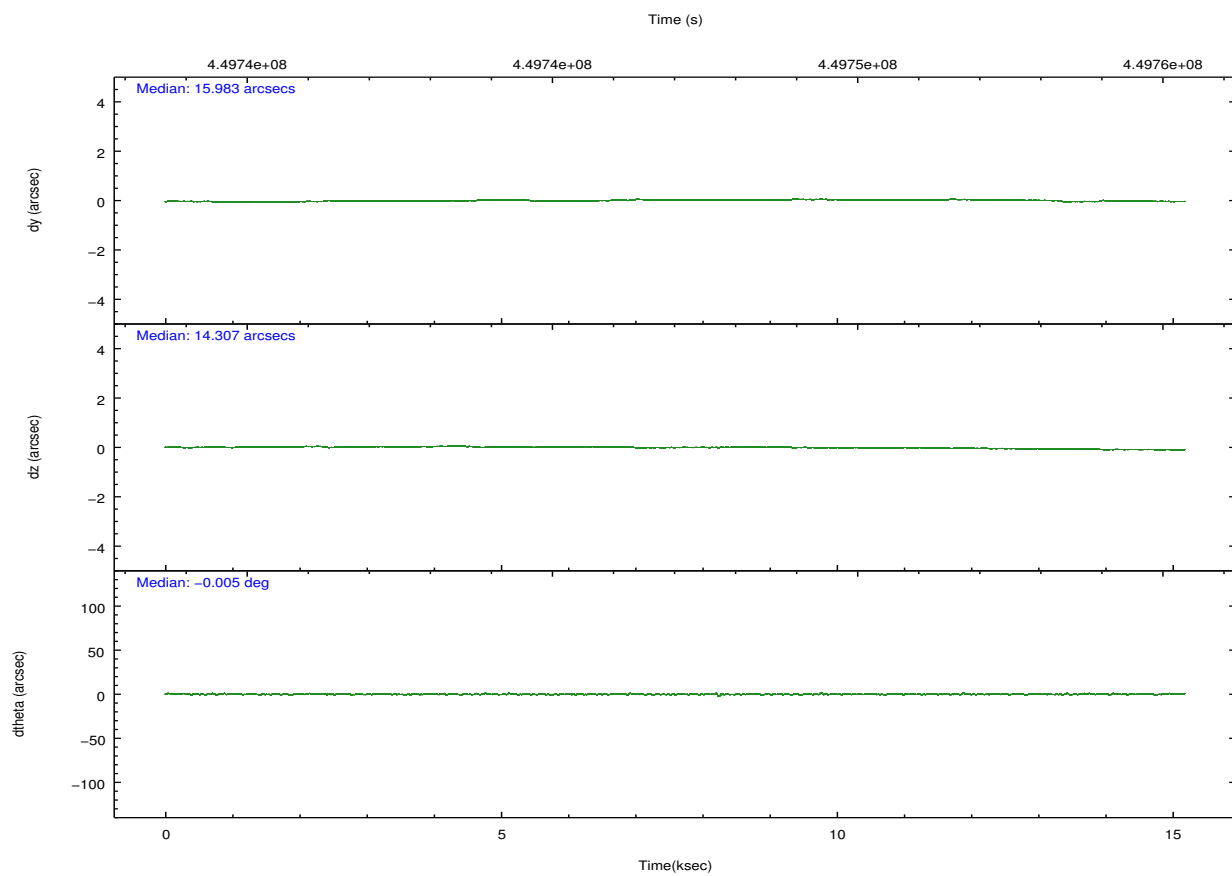
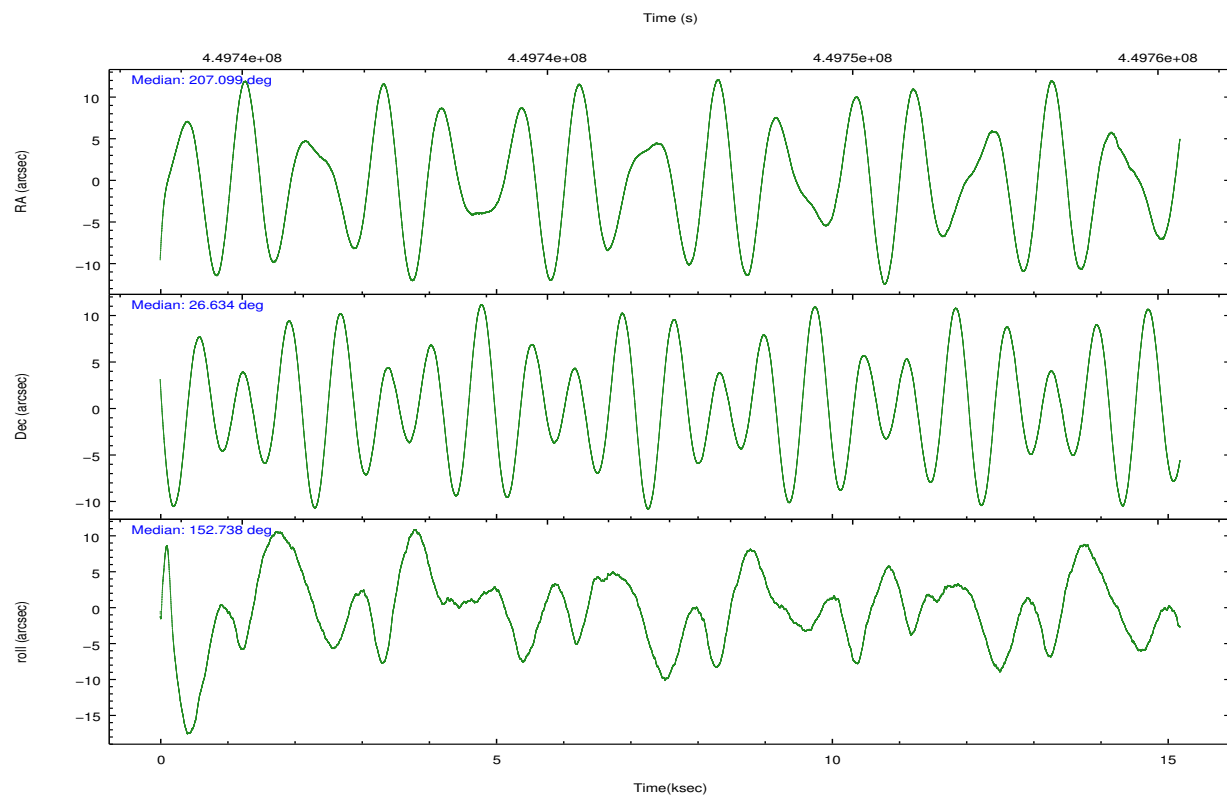
	ccd 0	ccd 1	ccd 2	ccd 3	ccd 6
grade 0 events	4544	57335	3614	4016	12675
	5%	38%	4%	4%	13%
grade 1 events	45	261	59	55	110
	0%	0%	0%	0%	0%
grade 2 events	2688	9948	2391	2196	2295
	3%	6%	2%	2%	2%
grade 3 events	1058	3425	1017	1072	1032
	1%	2%	1%	1%	1%
grade 4 events	1022	3362	1005	1066	1055
	1%	2%	1%	1%	1%
grade 5 events	3954	4324	3713	4400	4206
	5%	2%	4%	5%	4%
grade 6 events	2050	4334	1906	1947	2232
	2%	2%	2%	2%	2%
grade 7 events	62382	65492	70974	70038	71184
	80%	44%	83%	82%	75%

2.2 Compared Parameters

Parameter	Planned	Actual	Parameter	Planned	Actual
Instrument	ACIS	ACIS	Obspar format version number	7	7
Detector	ACIS-01236	ACIS-01236	Obspar file type	PREDICTED	ACTUAL
Grating	NONE	NONE	Obspar update status	NONE	UPDATED
Data mode	VFAINT	VFAINT	Number of optional ACIS chips dropped	0	0
Observation mode	POINTING	POINTING	On-chip summing requested	N	N
[deg] Pointing RA	207.129178	207.0984358707461	Subarray requested	NONE	NONE
[deg] Pointing Dec	26.635533	26.63407042761924	Alternating exposures requested	N	N
[deg] Pointing Roll	152.524302	152.7467600170506	[s] Primary exposure time	0.000000	3.1
[mm] SIM focus pos	-0.782348	-0.7809083437167272			
[mm] SIM defocus	0	0.001439871863259334			
[mm] SIM translation stage pos	-254.359963	-254.3657361129205			
[mm] SIM translation stage offset	20.7675	20.77328310999084			
[s] Observation start time (MET)	449739599.184000	449738600.66801			
Observation start date	2012-04-02T07:38:53	2012-04-02T07:23:20			
[s] Observation end time (MET)	449754599.184000	449755932.39393			
Observation end date	2012-04-02T11:48:53	2012-04-02T12:12:12			
Read mode	TIMED	TIMED			

2.3 Aspect



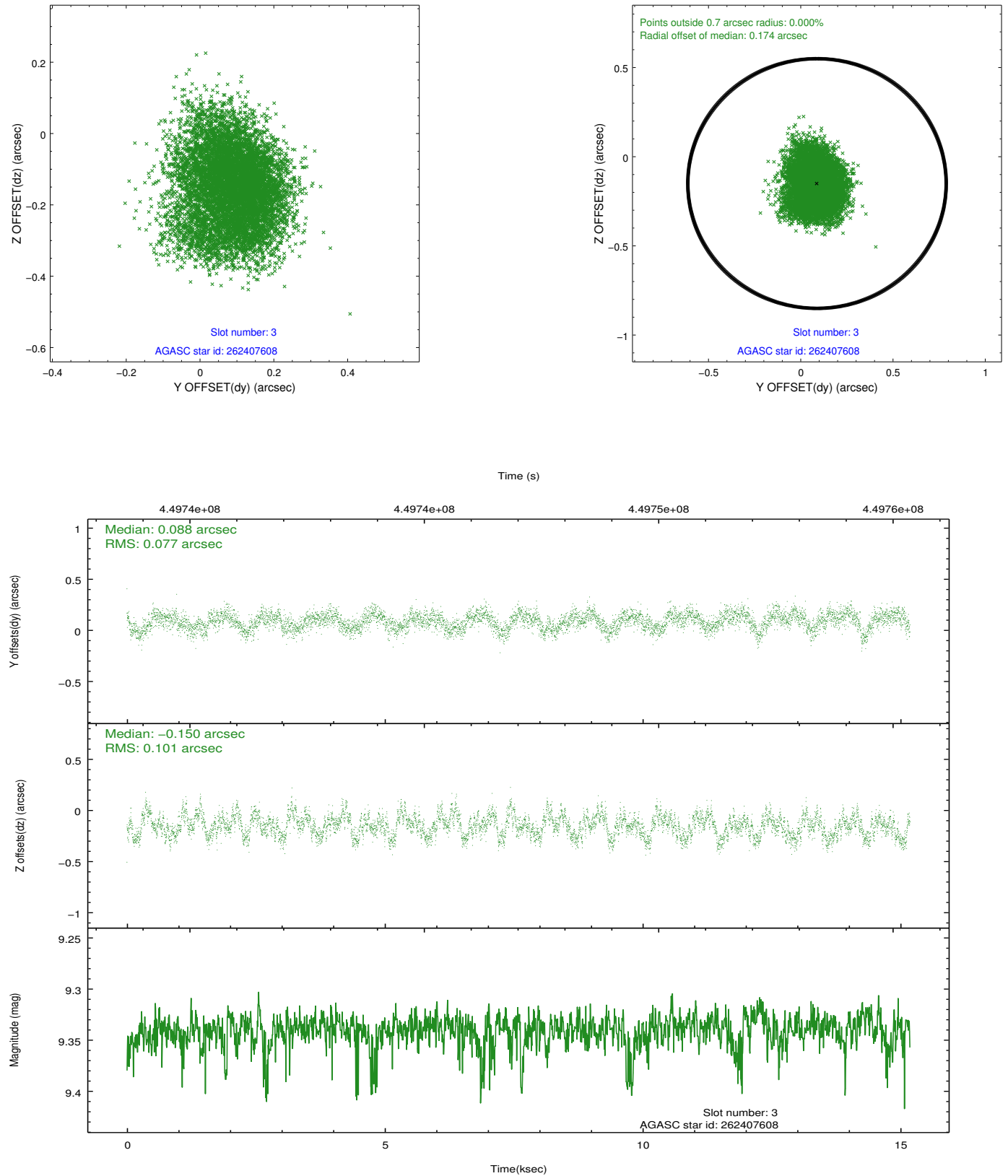


Slot Statistics

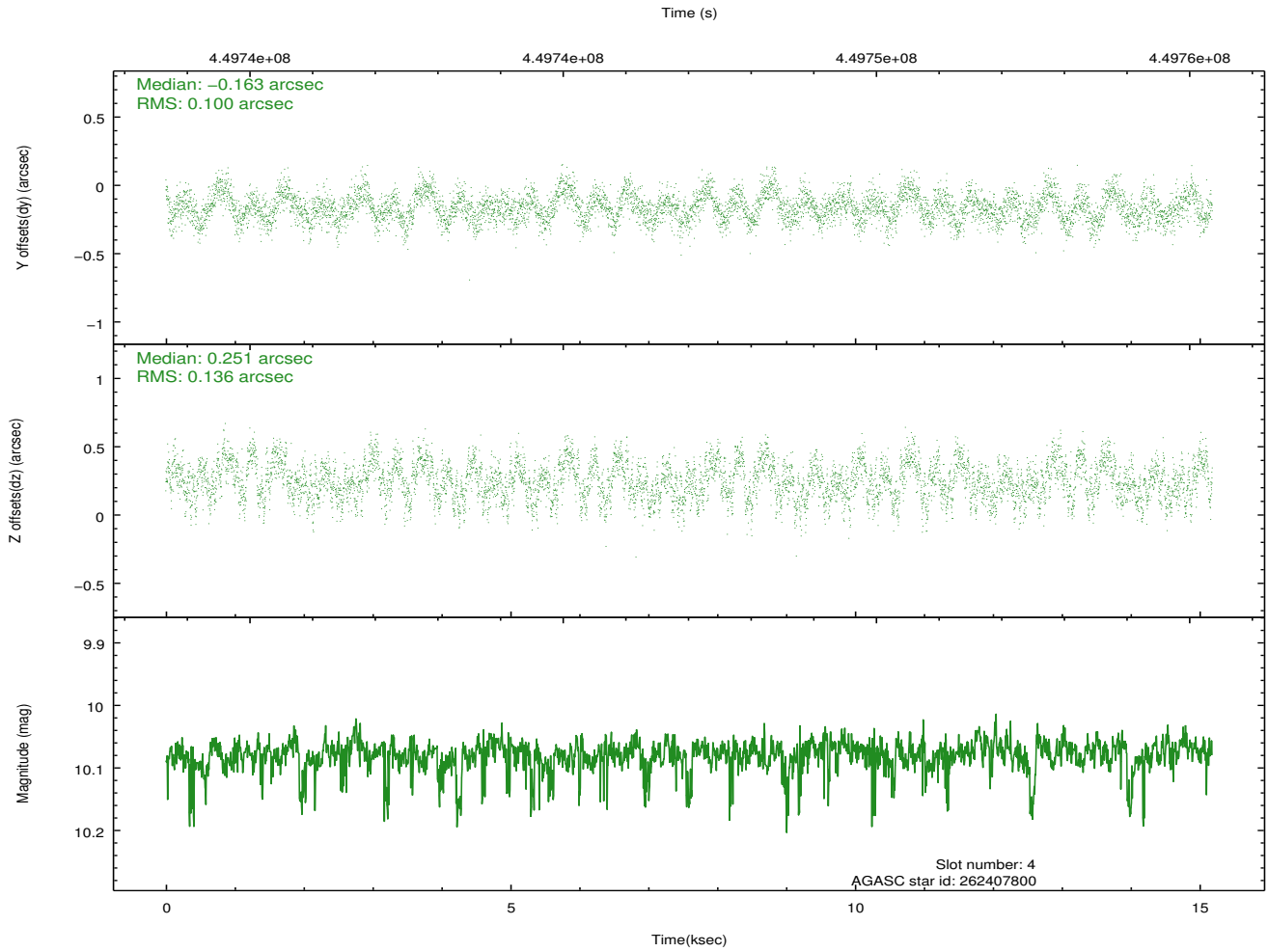
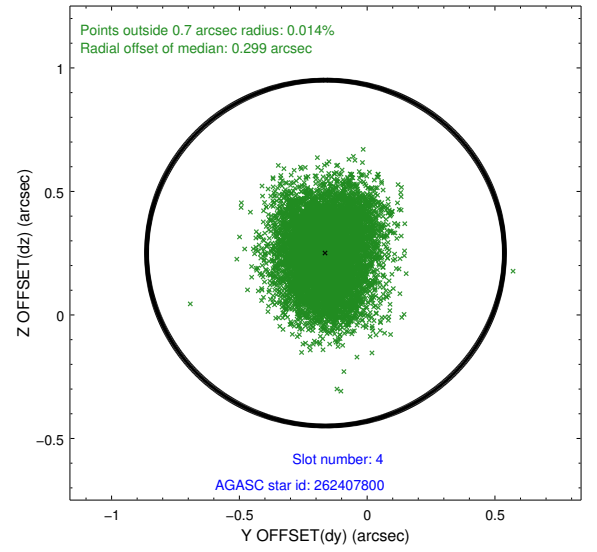
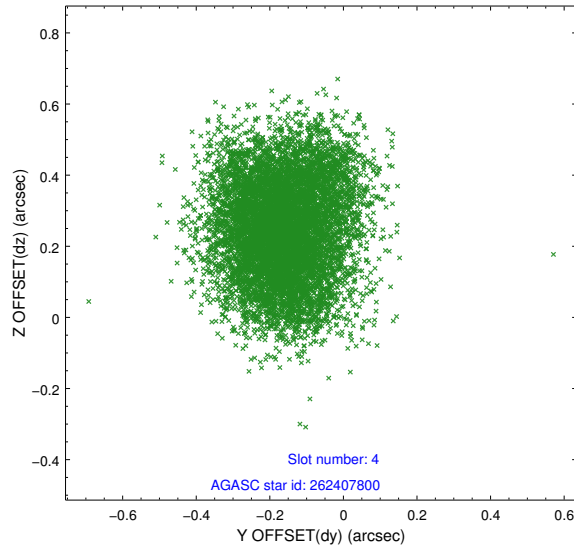
slot	status	id	mag	n_pts	med_dy	med_dz	dr1	dr2	ra	dec	mean_y	mean_z
0	FID	ACIS-I-1	7.21	3704	-0.052	0.161	0.007	0.013	0.000000	0.000000	923.81	-410.84
1	FID	ACIS-I-5	7.11	3704	-0.147	-0.001	0.006	0.011	0.000000	0.000000	-1824.32	1486.32
2	FID	ACIS-I-6	7.09	3704	0.108	-0.092	0.007	0.011	0.000000	0.000000	389.07	2131.15
3	GUIDE	262407608	9.34	7398	0.088	-0.150	0.138	0.216	207.378401	26.435507	-1044.55	267.36
4	GUIDE	262407800	10.08	7399	-0.163	0.251	0.183	0.287	207.321181	27.251762	480.67	-2250.19
5	GUIDE	262408096	9.33	7404	-0.036	-0.043	0.130	0.202	207.011678	26.515421	137.03	557.98
6	GUIDE	262408936	9.64	7337	0.013	0.082	0.182	0.304	207.154731	26.726554	78.32	-328.20
7	GUIDE	262411960	9.65	7384	0.101	-0.142	0.172	0.318	207.327895	25.881727	-1822.91	2109.96

2.4 Star Slots

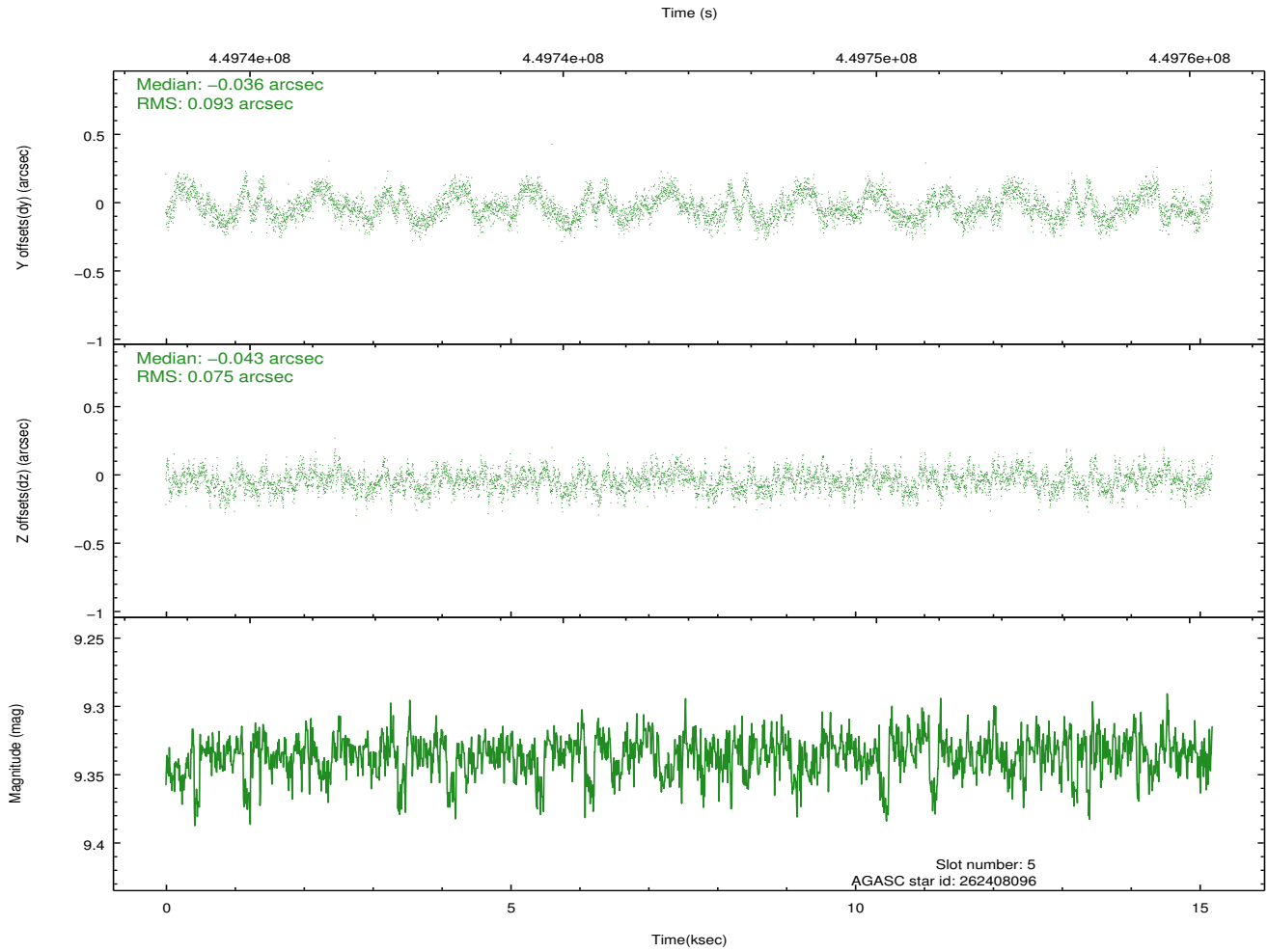
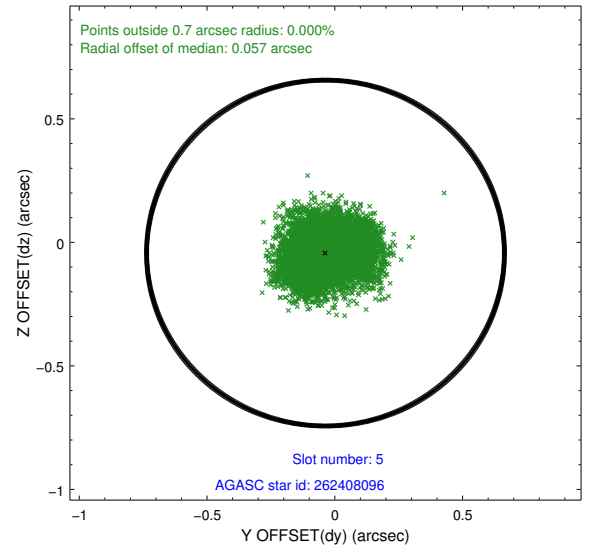
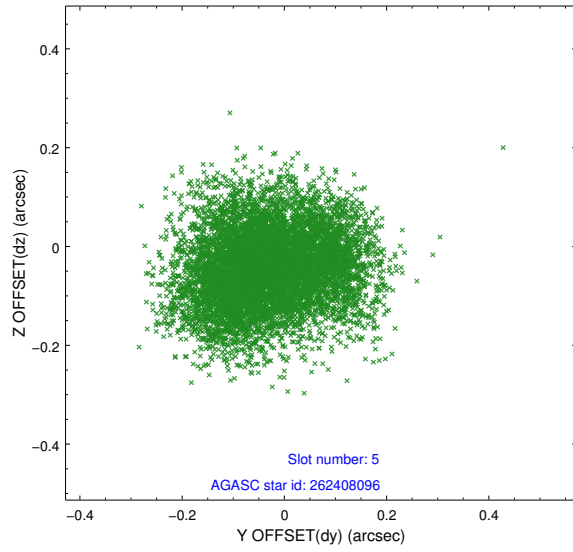
2.4.1 Slot 3



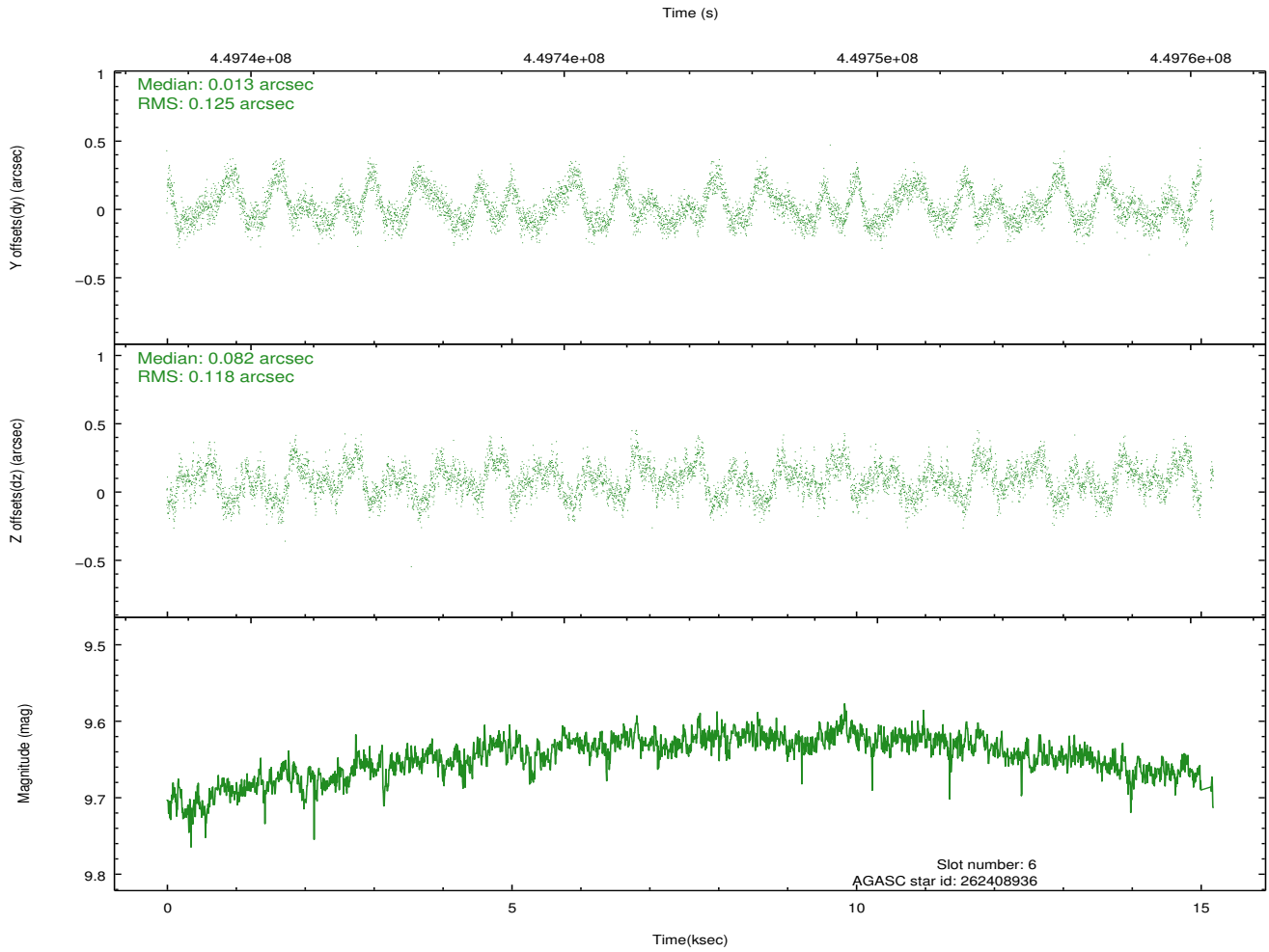
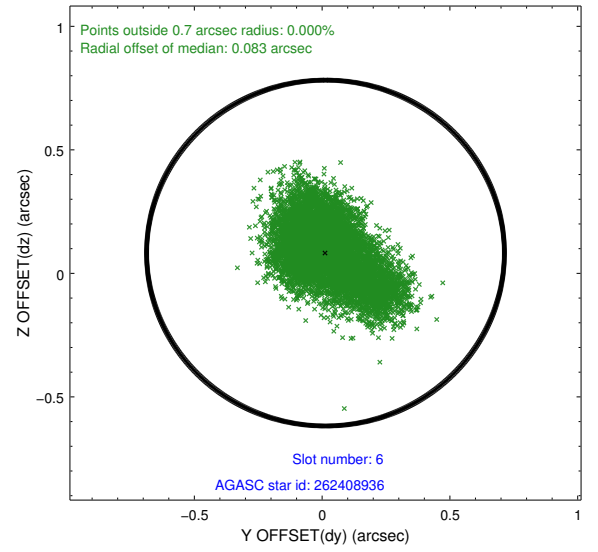
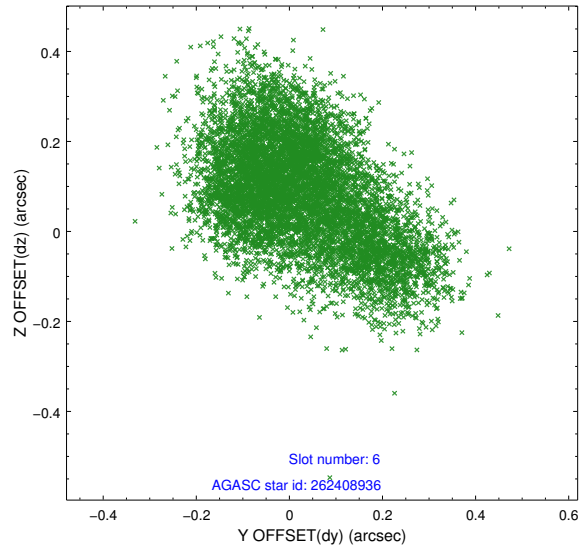
2.4.2 Slot 4



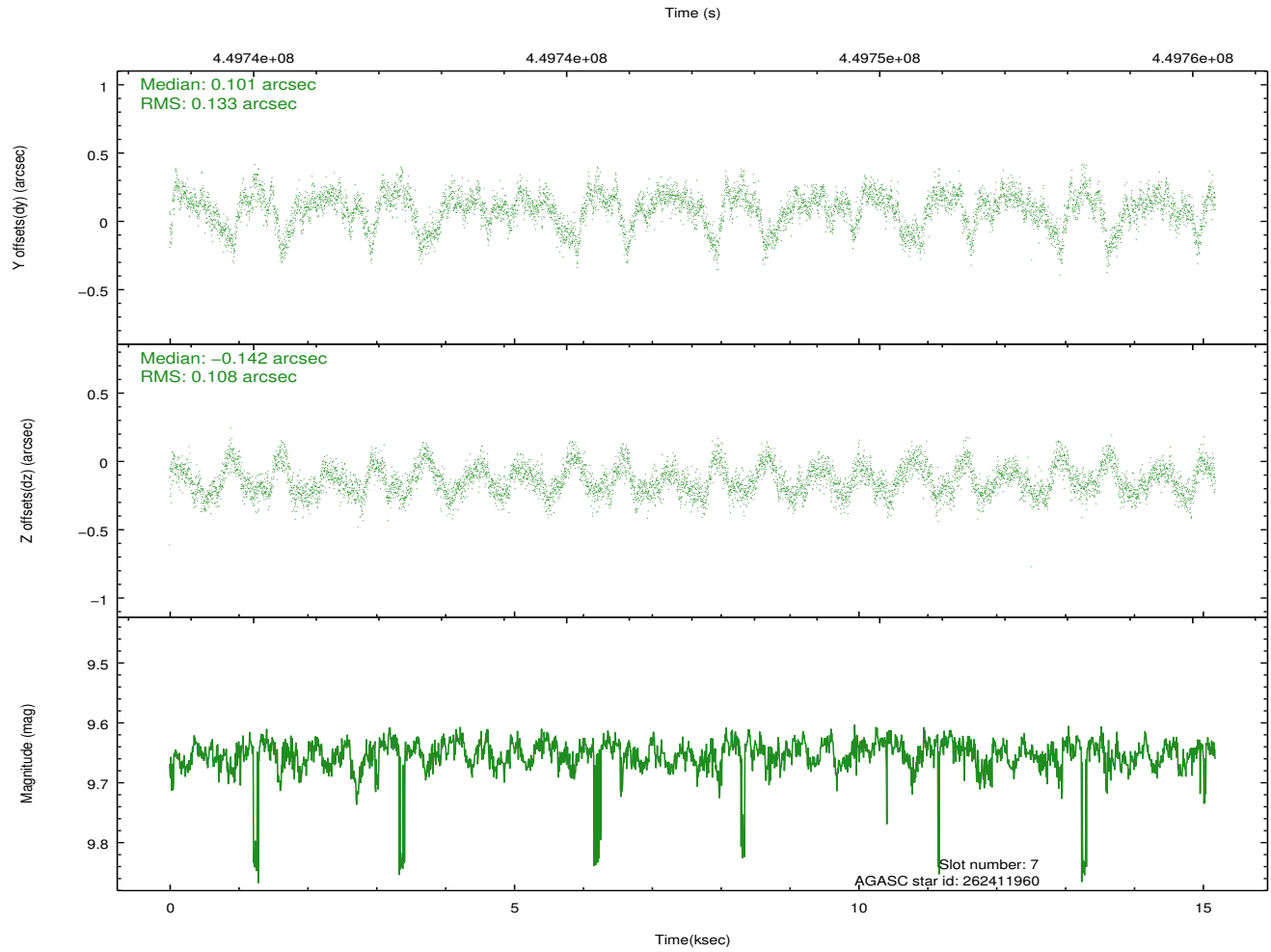
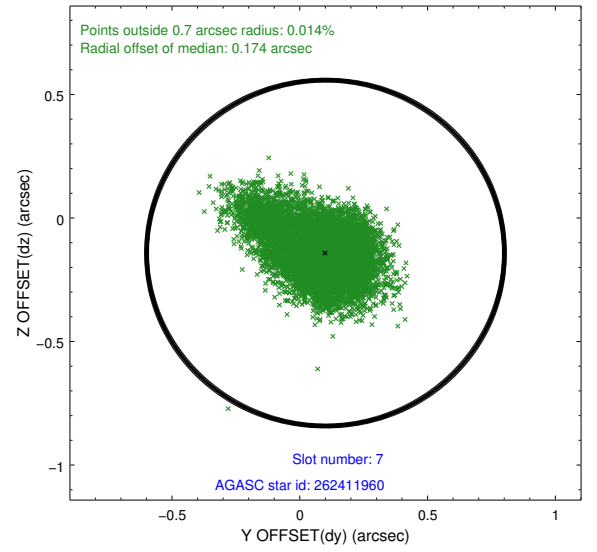
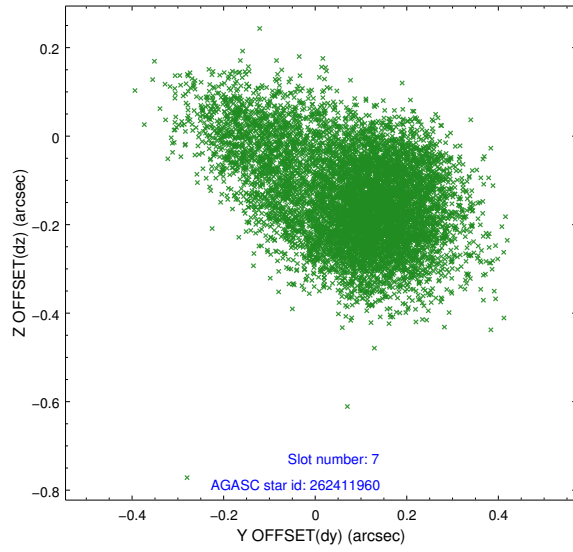
2.4.3 Slot 5



2.4.4 Slot 6

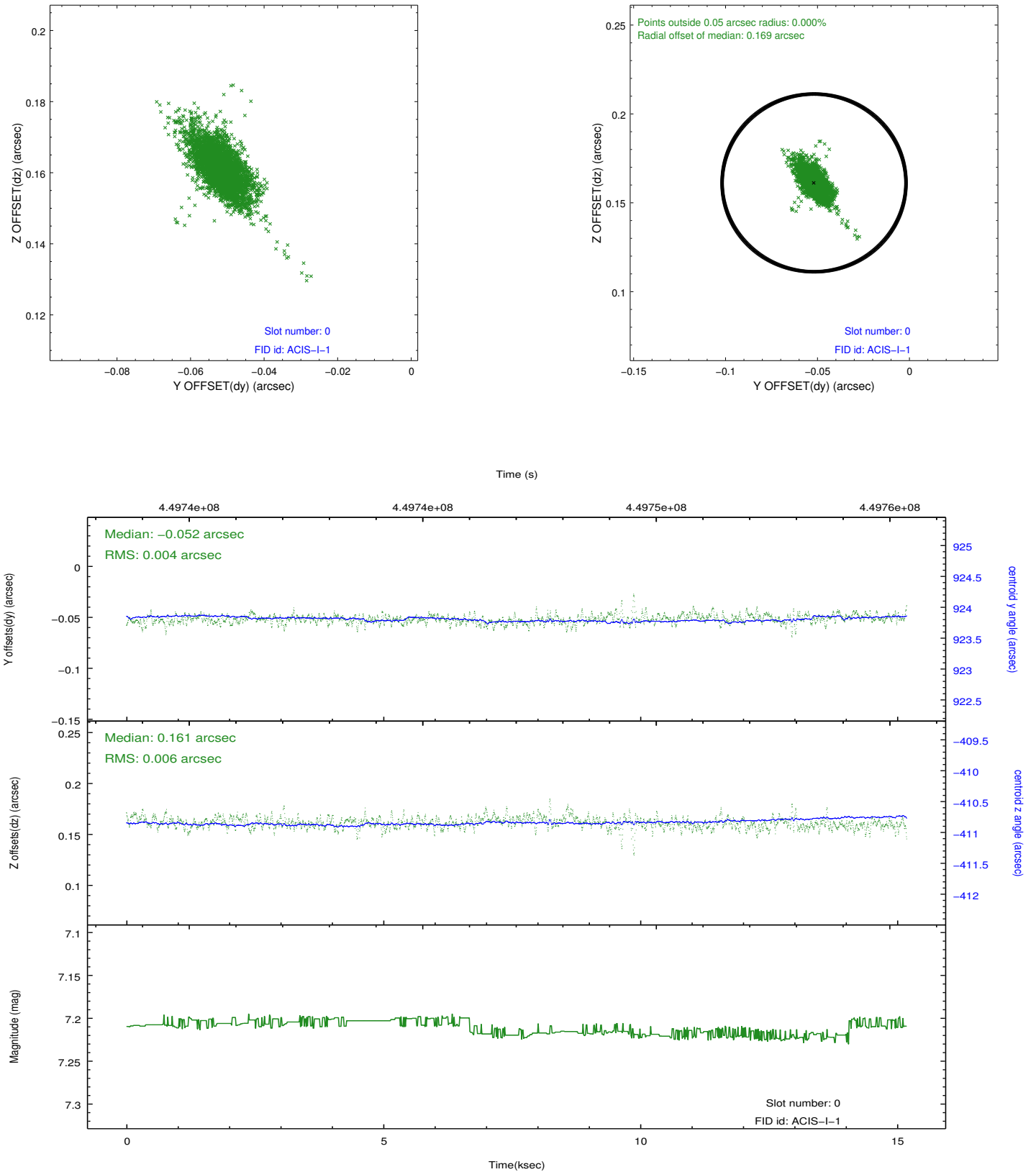


2.4.5 Slot 7

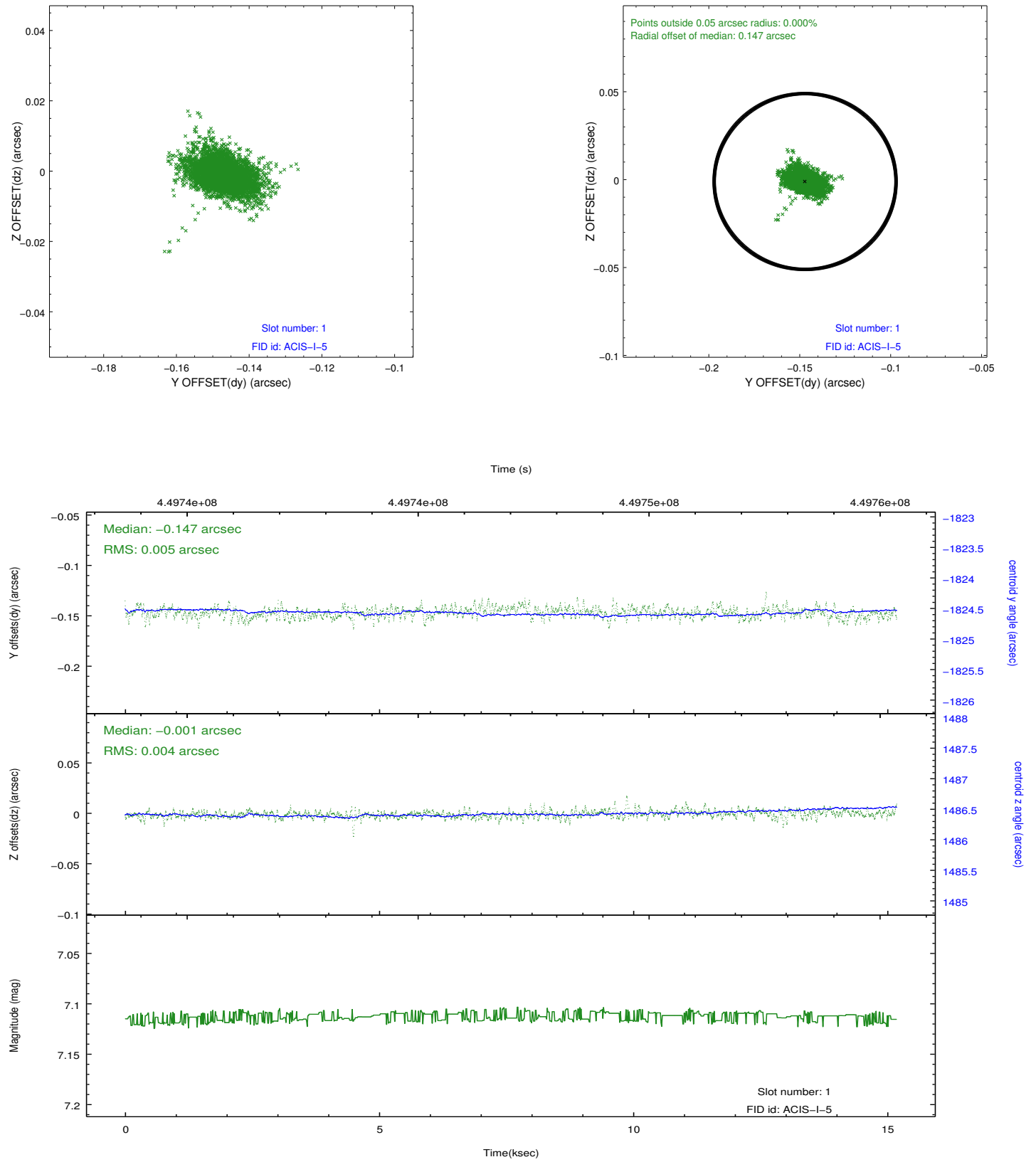


2.5 FID Slots

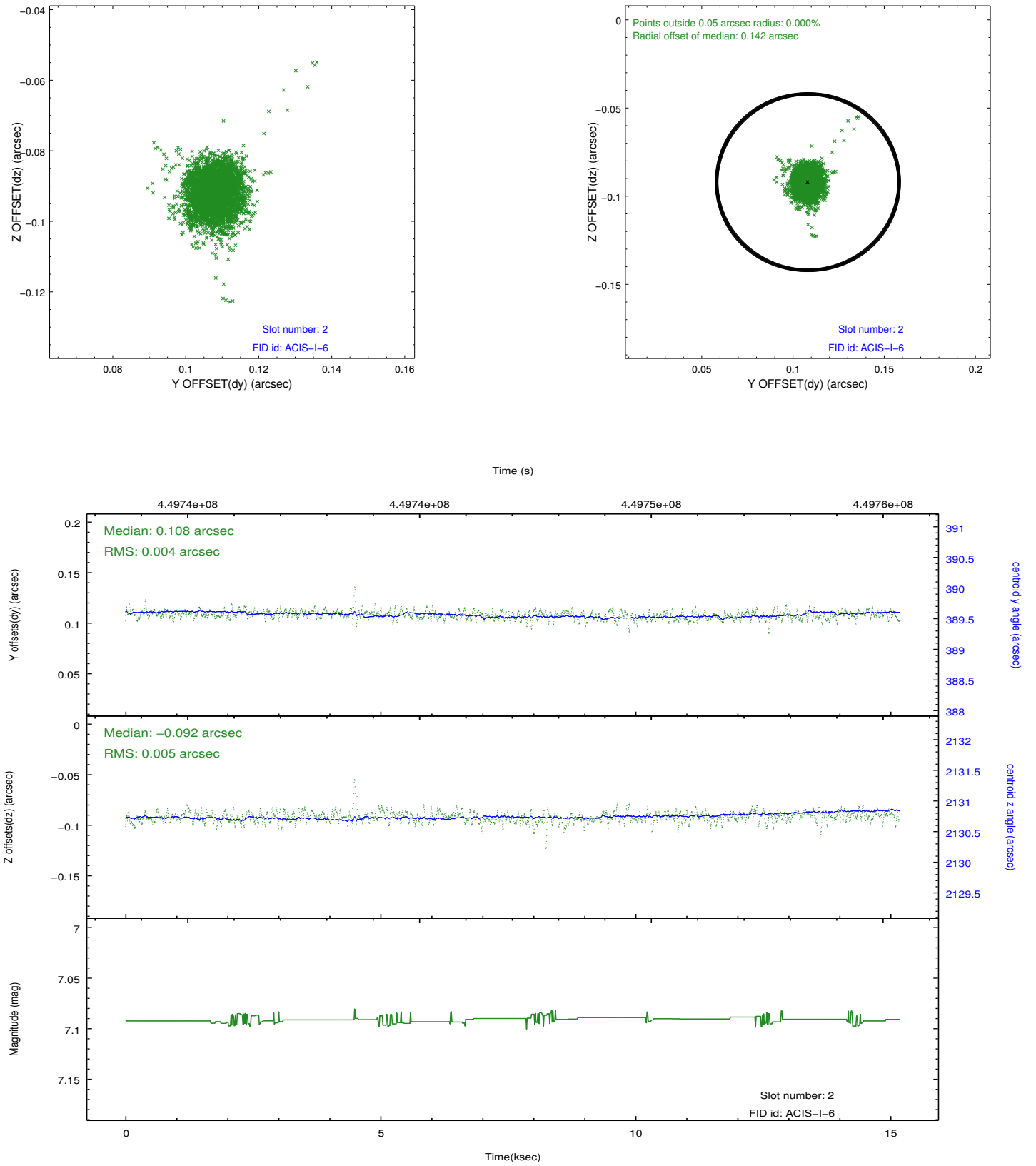
2.5.1 Slot 0



2.5.2 Slot 1



2.5.3 Slot 2



A Summary

A.1 Status

V&V Scientist	Joy Nichols
V&V Date (YYYY-MM-DD)	2012.04.03
V&V Edition	1
V&V Disposition and Status	OK
V&V Charge Time	15.080582740605

A.2 Comments