

V&V Reference Report

L2 ASCDS Version : 8.4.5

Observation 1314 - L2 Version 3
Chandra X-Ray Center

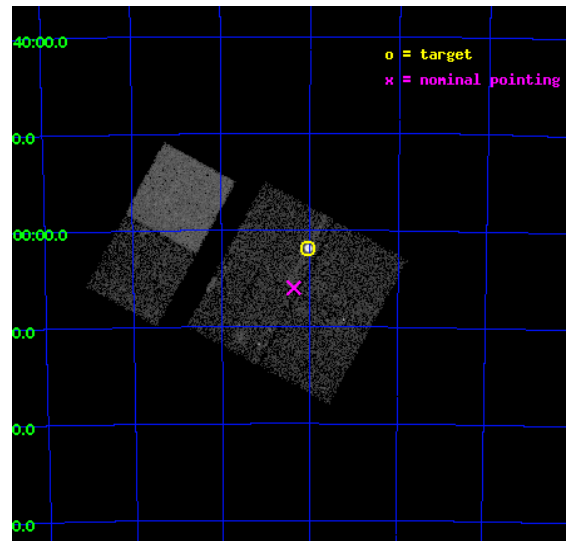
L2 Processing Date : Oct 1 2012

Contents

1	Front	2
2	OBI	3
2.1	OBI	3
2.1.1	Images	3
2.1.2	Bias	3
2.1.3	Parameters	4
2.1.4	Events	4
2.2	Compared Parameters	5
2.3	Aspect	6
2.4	Star Slots	9
2.4.1	Slot 3	9
2.4.2	Slot 4	10
2.4.3	Slot 5	11
2.4.4	Slot 6	12
2.4.5	Slot 7	13
2.5	FID Slots	14
2.5.1	Slot 0	14
2.5.2	Slot 1	15
2.5.3	Slot 2	16
A	Summary	17
A.1	Status	17
A.2	Comments	17

1 Front

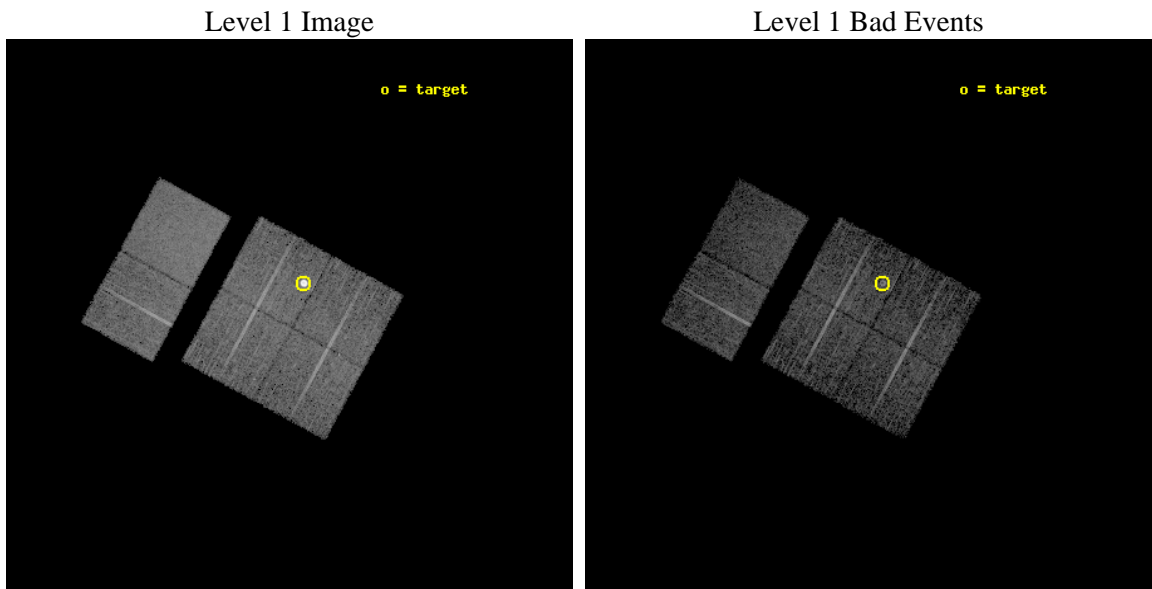
seq_num	590128	Sequence number
obs_id	1314	Observation id
title	ACIS CALIBRATION OBSERVATION OF THE SUPERNOVA REMNANT E0102-72 (DEC 2000)	Proposal title
observer	Dr. CXC Calibration	Principal investigator
object	E0102-72.3 [Chip I3, T=120, Offsets=-4,0,0]	Source name
dtcycle	0	
cycle	P	events from which exps? Prim/Second/Both
ra_targ	16.01	Observer's specified target RA [deg]
dec_targ	-72.032028	Observer's specified target Dec [deg]
ra_nom	16.090845159302	Nominal RA [deg]
dec_nom	-72.099522969951	Nominal Dec [deg]
roll_nom	298.68309981058	Nominal Roll [deg]
revision	3	Processing version of data
ontime	6953.6000064611	Sum of GTIs [s]
livetime	6865.5493362241	Livetime [s]
ontime0	6953.6000064611	Sum of GTIs [s]
ontime1	6953.6000064611	Sum of GTIs [s]
ontime2	6953.6000064611	Sum of GTIs [s]
ontime3	6953.6000064611	Sum of GTIs [s]
ontime6	6953.6000064611	Sum of GTIs [s]
ontime7	6953.6000064611	Sum of GTIs [s]
l2events	68864	Number of level 2 events



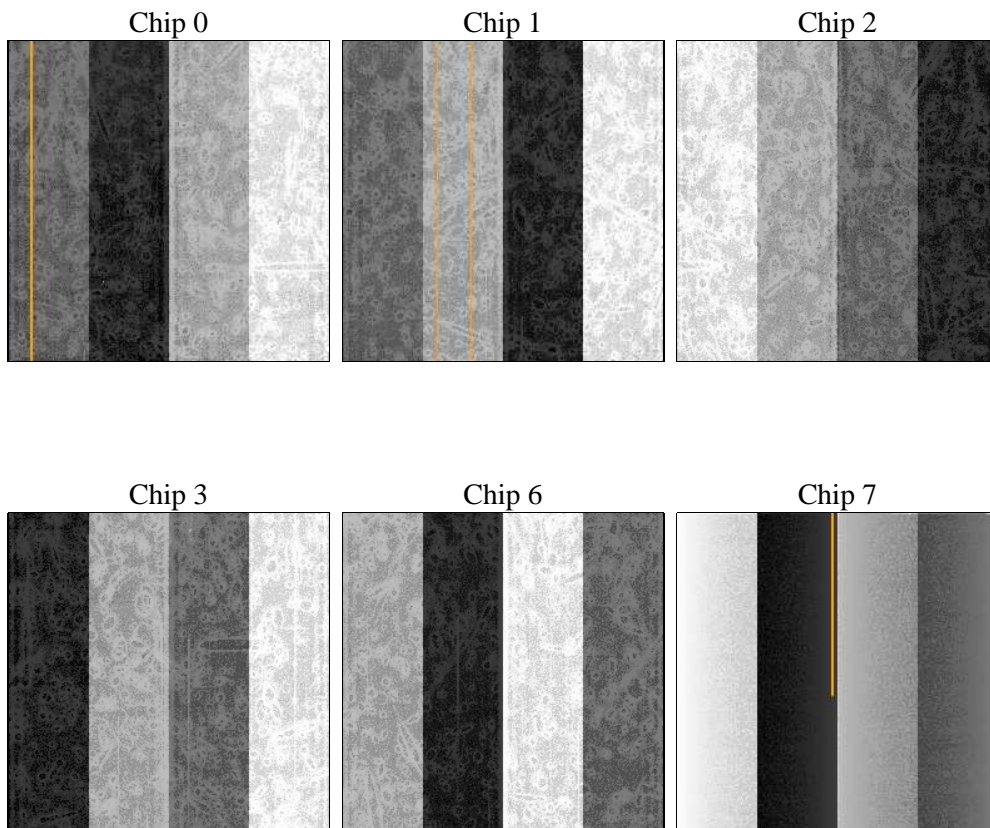
2 OBI

2.1 OBI

2.1.1 Images



2.1.2 Bias



2.1.3 Parameters

obi_num	0	Obi number	sched_exp_time	7200.000000	[s] Scheduled observation exposure time
ascdsver	8.4.5	Processing system revision	ontime	6953.6000064611	Sum of GTIs [s]
caldsver	4.5.2	 	ontime0	6953.6000064611	Sum of GTIs [s]
date	2012-10-01T21:57:09	Date and time of file creation	ontime1	6953.6000064611	Sum of GTIs [s]
revision	3	Processing version of data	ontime2	6953.6000064611	Sum of GTIs [s]
			ontime3	6953.6000064611	Sum of GTIs [s]
			ontime6	6953.6000064611	Sum of GTIs [s]
			ontime7	6953.6000064611	Sum of GTIs [s]
			l1events	280892	Number of level 1 events

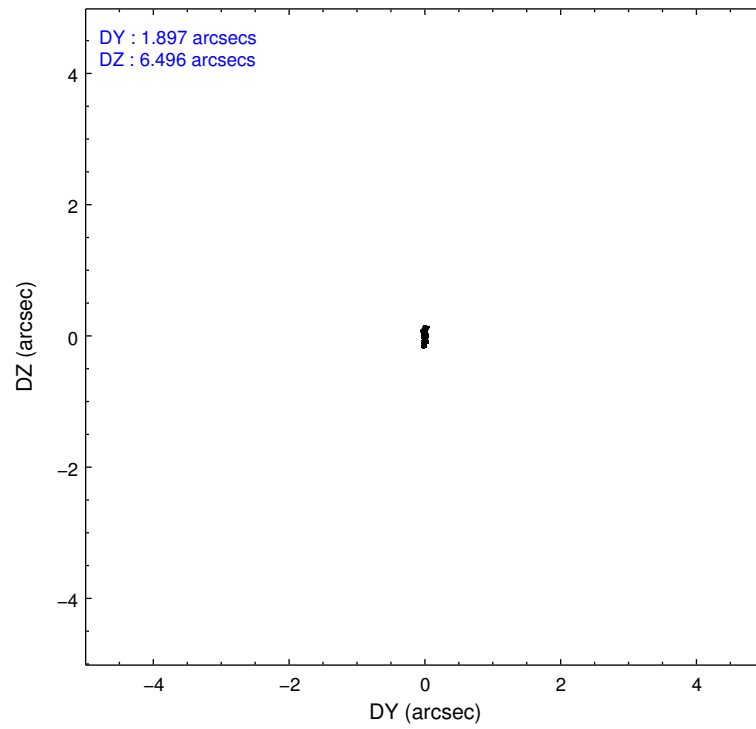
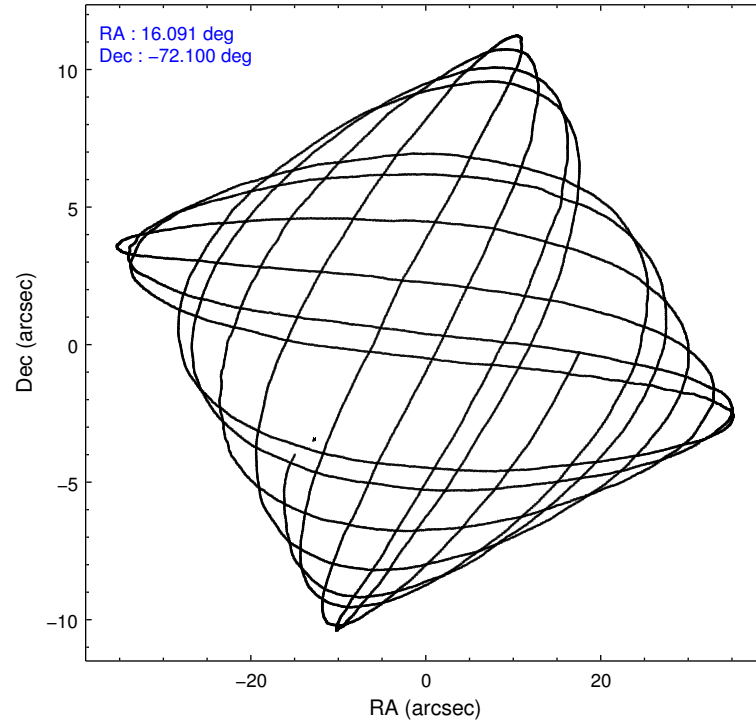
2.1.4 Events

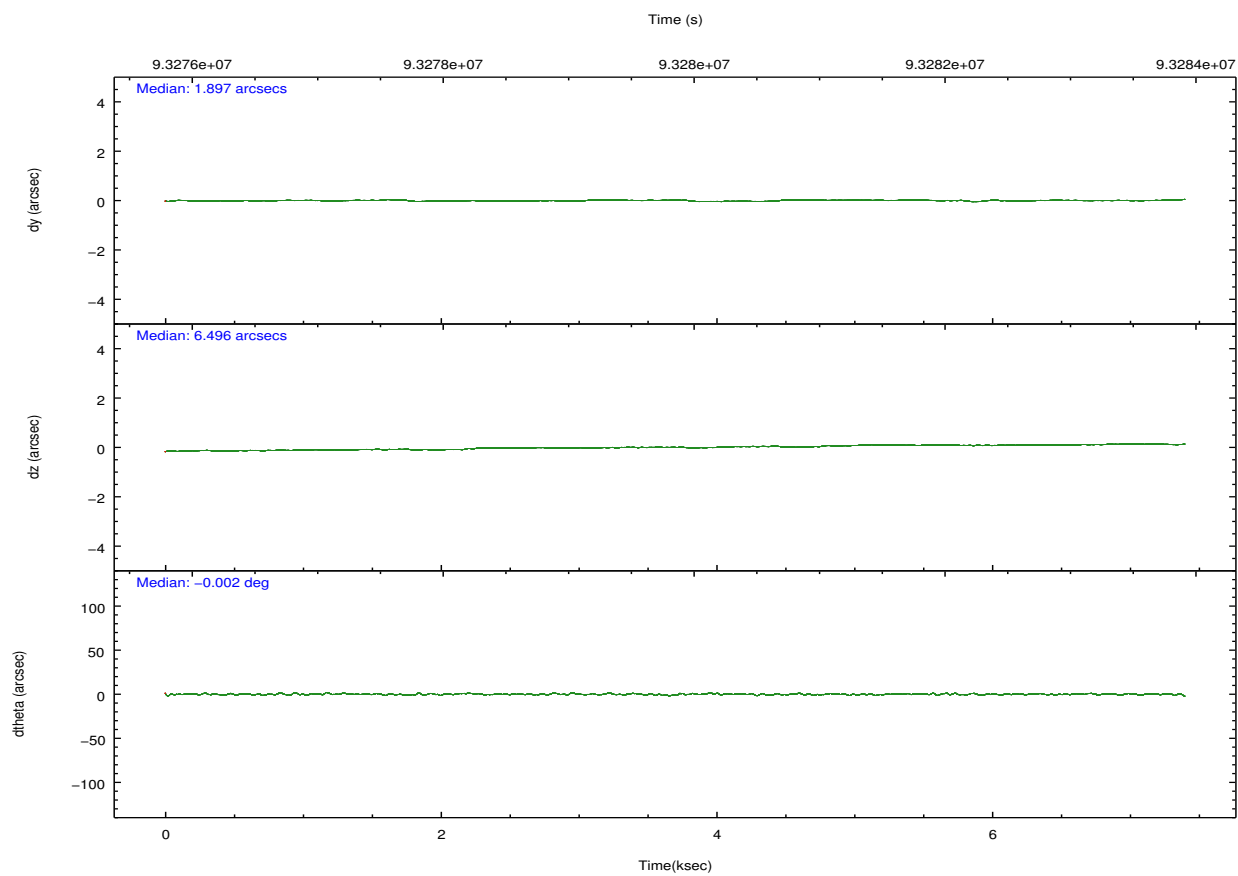
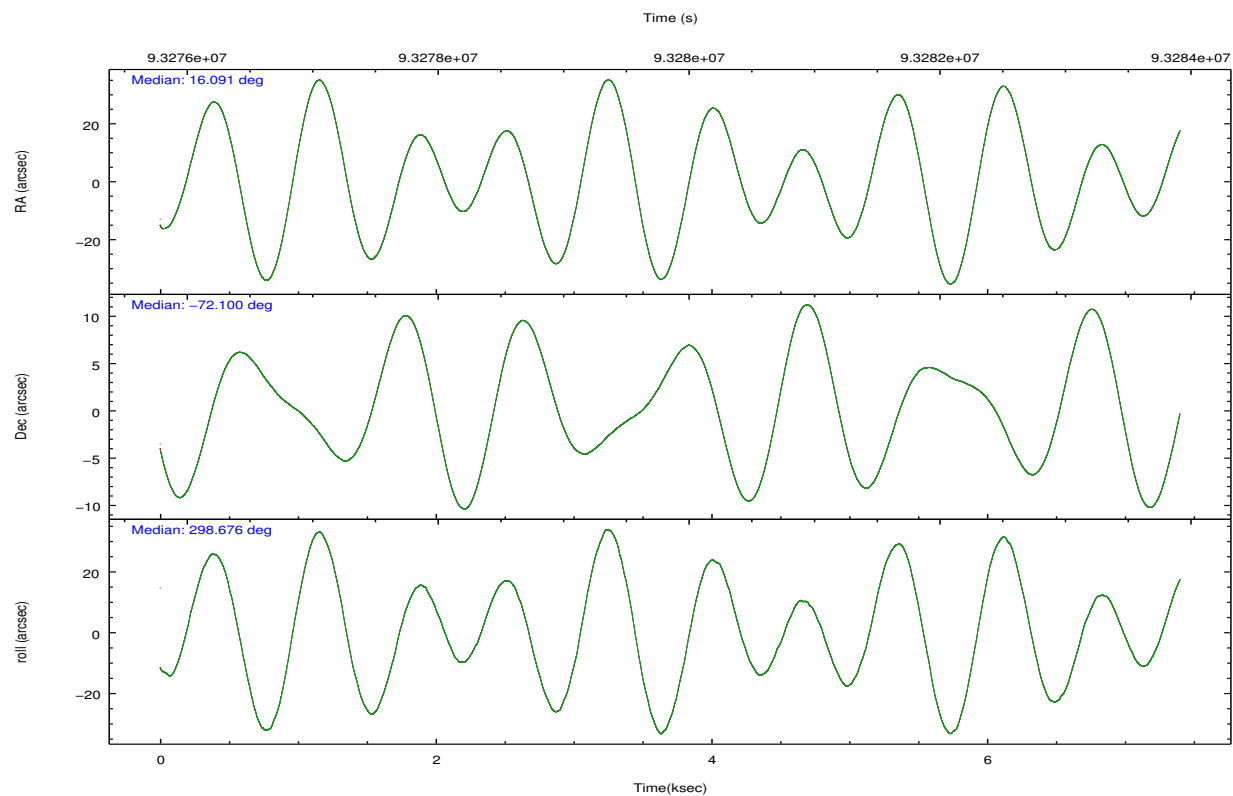
	ccd 0	ccd 1	ccd 2	ccd 3	ccd 6	ccd 7		ccd 0	ccd 1	ccd 2	ccd 3	ccd 6	ccd 7
level 1 events	37536	37235	41599	69054	42619	52849	grade 0 events	2411	2270	2674	25114	1948	2065
rejected events	32396	31895	36232	38439	37779	31140		6%	6%	6%	36%	4%	3%
rejected %	86%	85%	87%	55%	88%	58%	grade 1 events	24	18	22	234	22	51
								0%	0%	0%	0%	0%	0%
							grade 2 events	965	1095	1051	2757	949	4194
								2%	2%	2%	3%	2%	7%
							grade 3 events	472	528	433	895	531	2004
								1%	1%	1%	1%	1%	3%
							grade 4 events	469	498	450	897	456	1983
								1%	1%	1%	1%	1%	3%
							grade 5 events	1462	1573	1407	1703	1857	5146
								3%	4%	3%	2%	4%	9%
							grade 6 events	825	955	763	969	958	11476
								2%	2%	1%	1%	2%	21%
							grade 7 events	30908	30298	34799	36485	35898	25930
								82%	81%	83%	52%	84%	49%

2.2 Compared Parameters

Parameter	Planned	Actual	Parameter	Planned	Actual
Instrument	ACIS	ACIS	Obspar format version number	7	7
Detector	ACIS-012367	ACIS-012367	Obspar file type	PREDICTED	ACTUAL
Grating	NONE	NONE	Obspar update status	NONE	UPDATED
Data mode	FAINT	FAINT	Number of optional ACIS chips dropped	0	0
Observation mode	POINTING	POINTING	On-chip summing requested	N	N
[deg] Pointing RA	16.014561	16.09084515930182	Subarray requested	NONE	NONE
[deg] Pointing Dec	-72.085078	-72.09952296995064	Alternating exposures requested	N	N
[deg] Pointing Roll	298.401834	298.6830998105777	[s] Primary exposure time	0.000000	3.2
[s] Window start time (MET)	92016064.184000	92016064.184000			
[s] Window stop time (MET)	94608064.184000	94608064.184000			
[mm] SIM focus pos	-0.782348	-0.7809083437167272			
[mm] SIM defocus	0	0.001439871863259334			
[mm] SIM translation stage pos	-233.592463	-233.5874344608287			
[mm] SIM translation stage offset	0	-0.005018542100998502			
[s] Observation start time (MET)	93276347.184000	93275971.84699			
Observation start date	2000-12-15T14:04:43	2000-12-15T13:59:31			
[s] Observation end time (MET)	93283547.184000	93283681.897285			
Observation end date	2000-12-15T16:04:43	2000-12-15T16:08:01			
Read mode	TIMED	TIMED			

2.3 Aspect



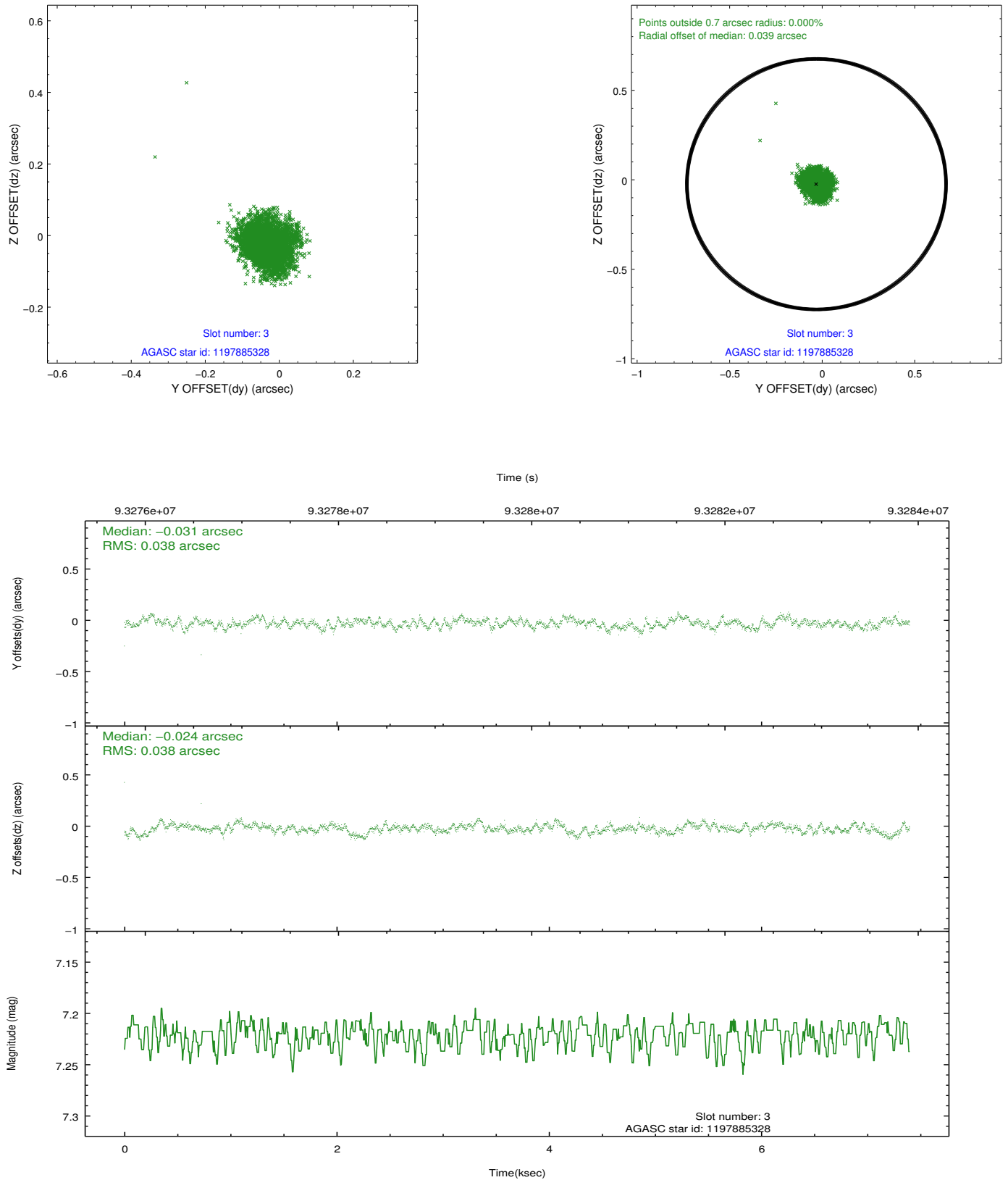


Slot Statistics

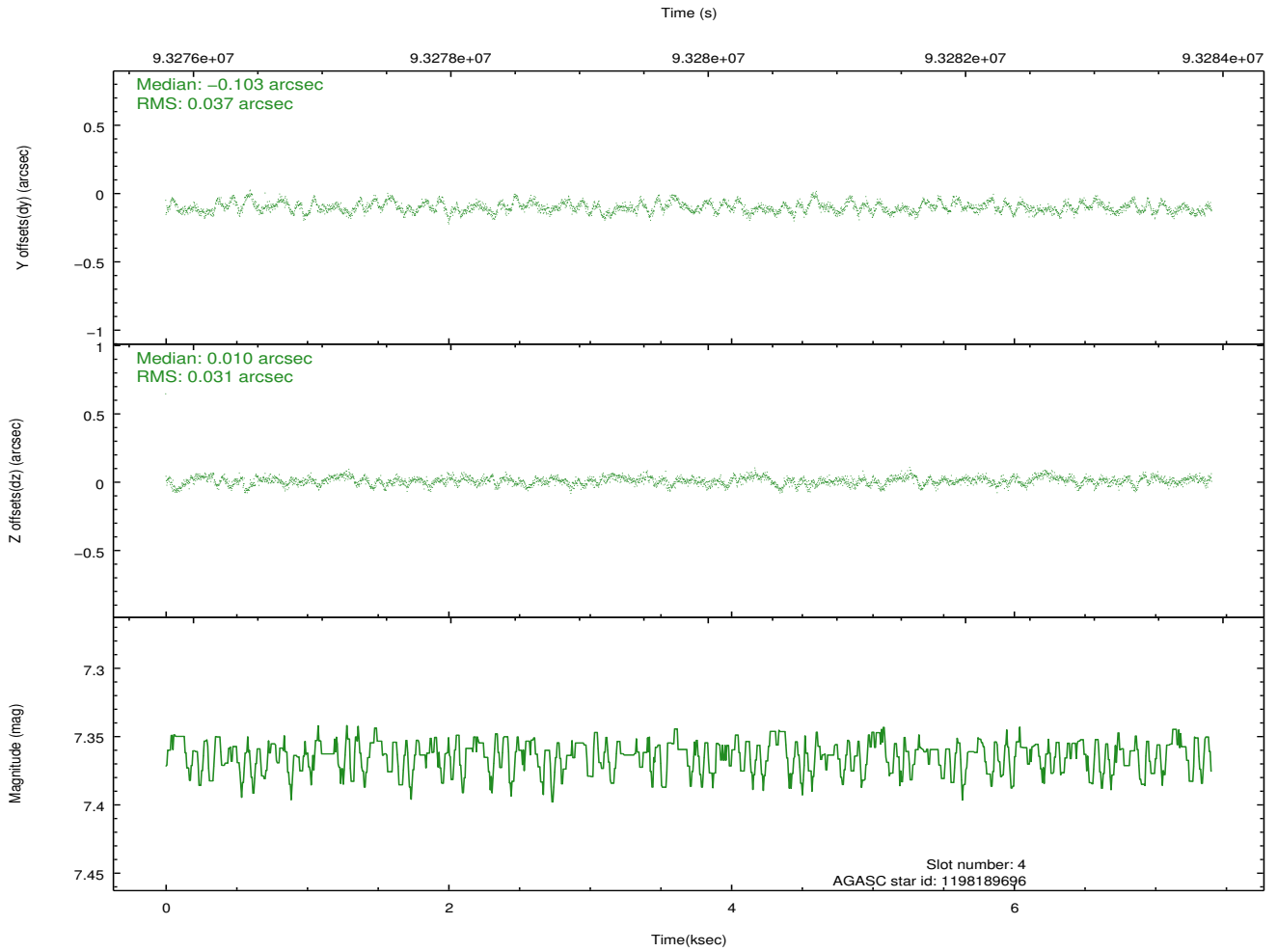
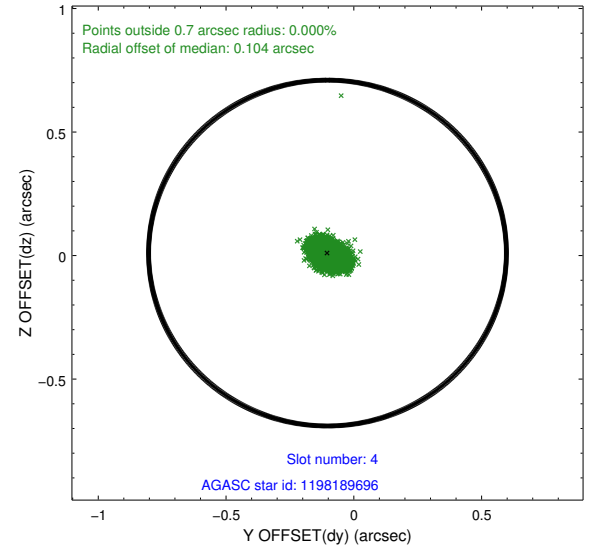
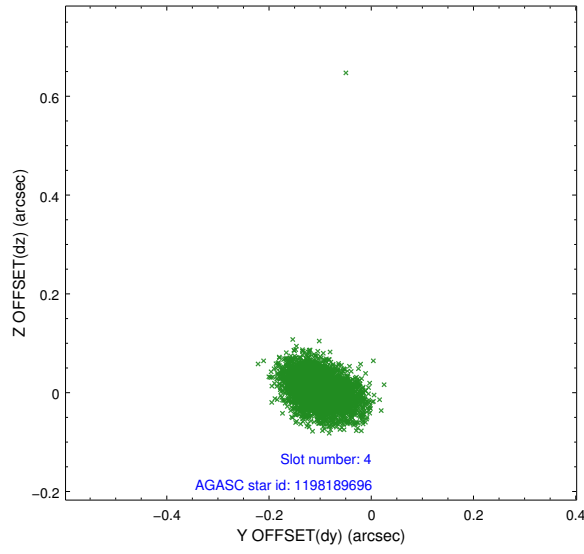
slot	status	id	mag	n_pts	med_dy	med_dz	dr1	dr2	ra	dec	mean_y	mean_z
0	FID	ACIS-I-2	7.15	1805	-0.034	-0.075	0.009	0.014	0.000000	0.000000	-756.27	-836.32
1	FID	ACIS-I-4	7.18	1804	-0.028	0.048	0.006	0.010	0.000000	0.000000	2157.43	1069.60
2	FID	ACIS-I-5	7.23	1804	-0.039	0.096	0.009	0.014	0.000000	0.000000	-1809.12	1068.36
3	GUIDE	1197885328	7.22	3609	-0.031	-0.024	0.057	0.091	16.283090	-71.733943	-968.14	867.06
4	GUIDE	1198189696	7.36	3610	-0.103	0.010	0.050	0.083	15.223750	-72.697522	1540.72	-1796.10
5	GUIDE	1197750936	7.56	3610	-0.045	-0.065	0.053	0.083	15.387940	-71.549550	-2032.56	286.05
6	GUIDE	1197884536	8.50	3608	0.051	0.040	0.060	0.102	17.160729	-71.835289	-169.92	1553.08
7	GUIDE	1197884712	8.29	3609	0.127	0.044	0.053	0.086	16.087398	-72.252690	568.18	-216.54

2.4 Star Slots

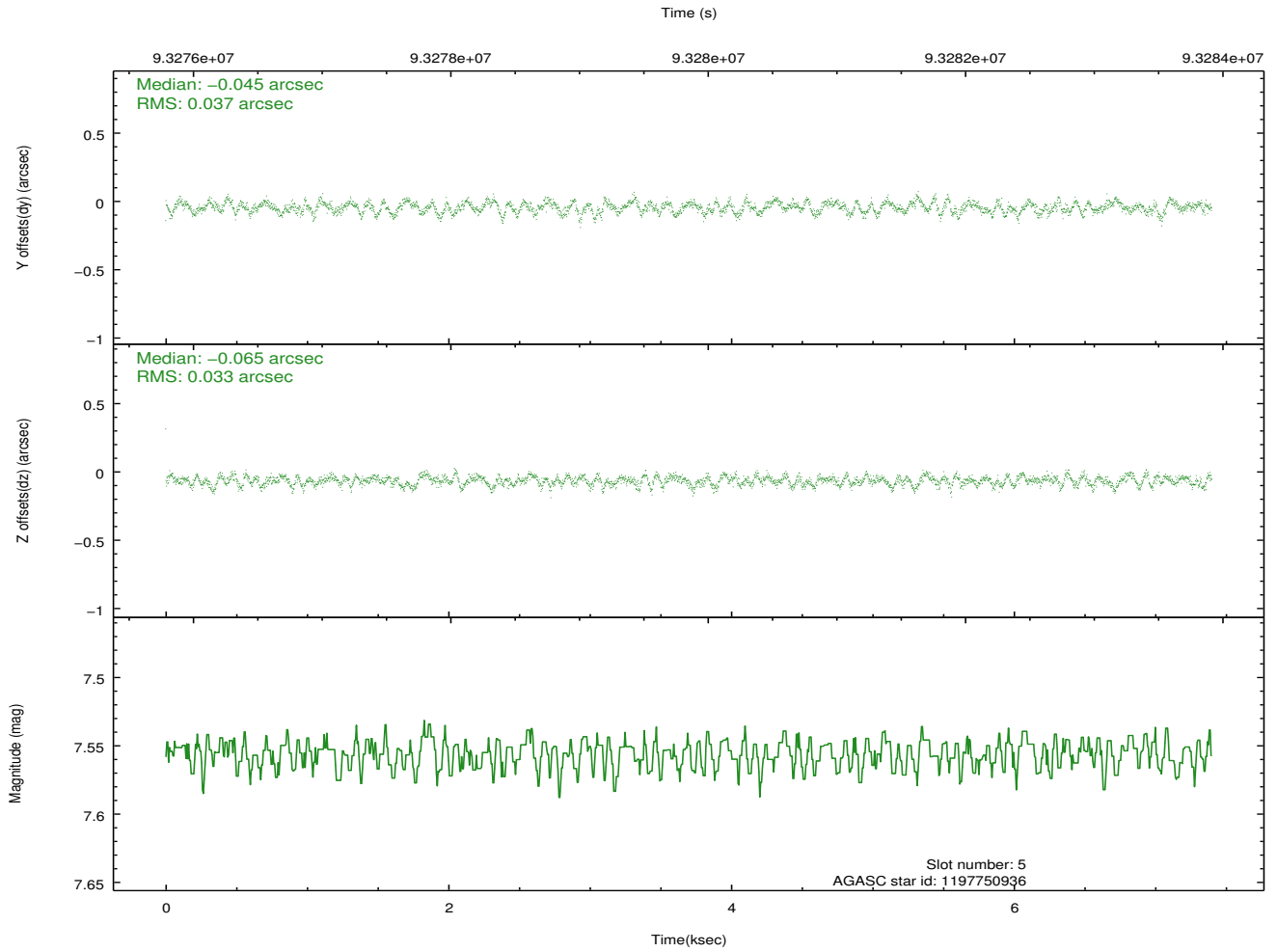
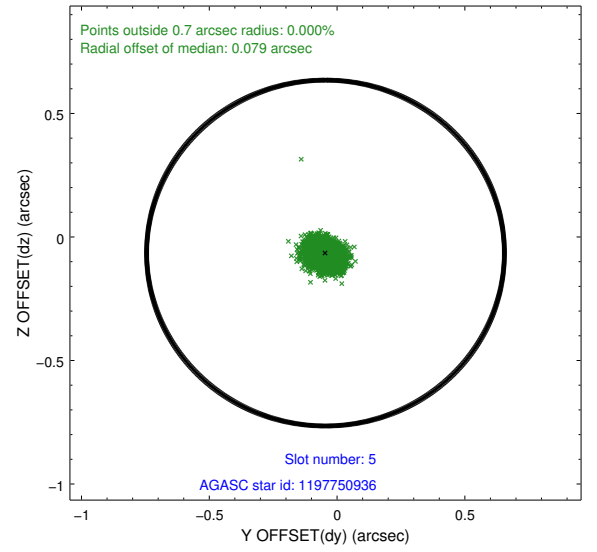
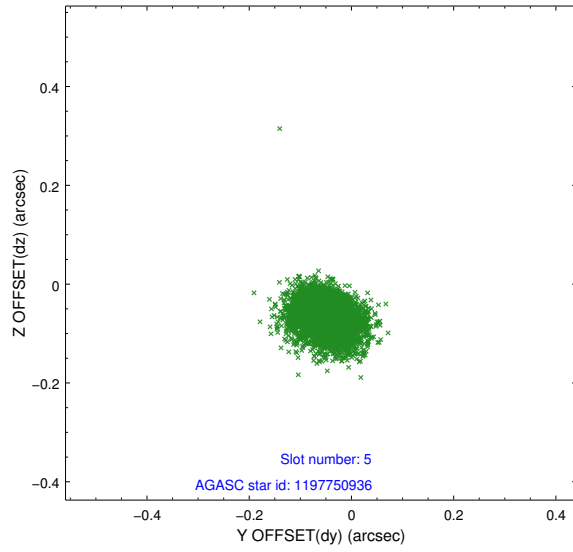
2.4.1 Slot 3



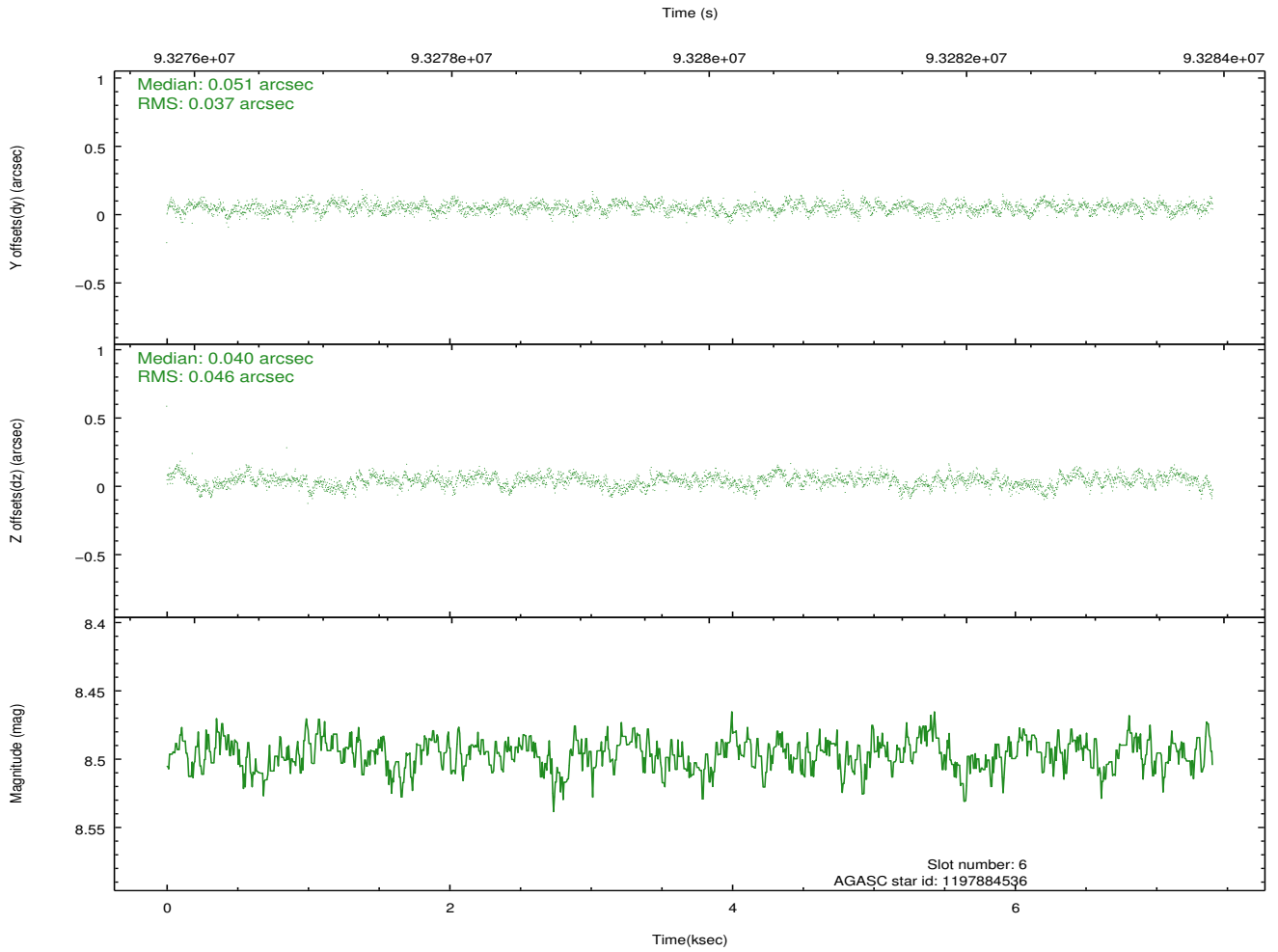
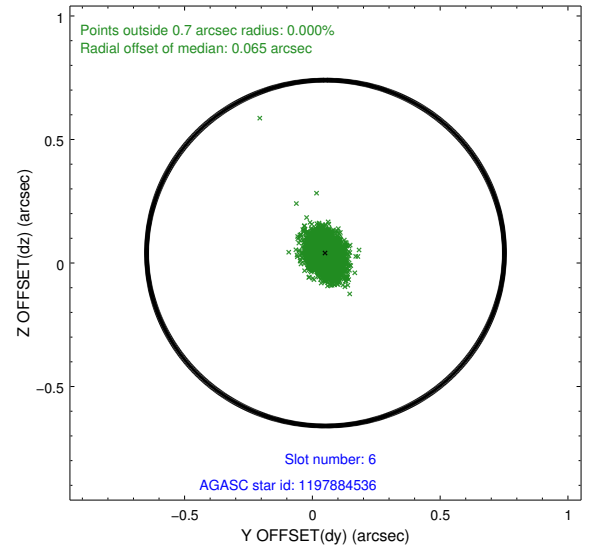
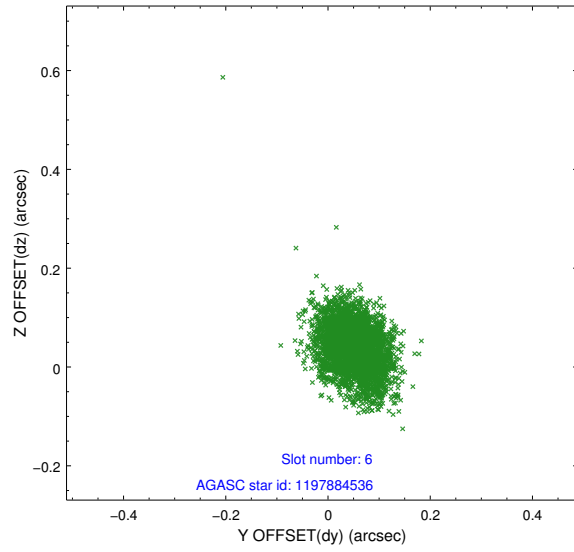
2.4.2 Slot 4



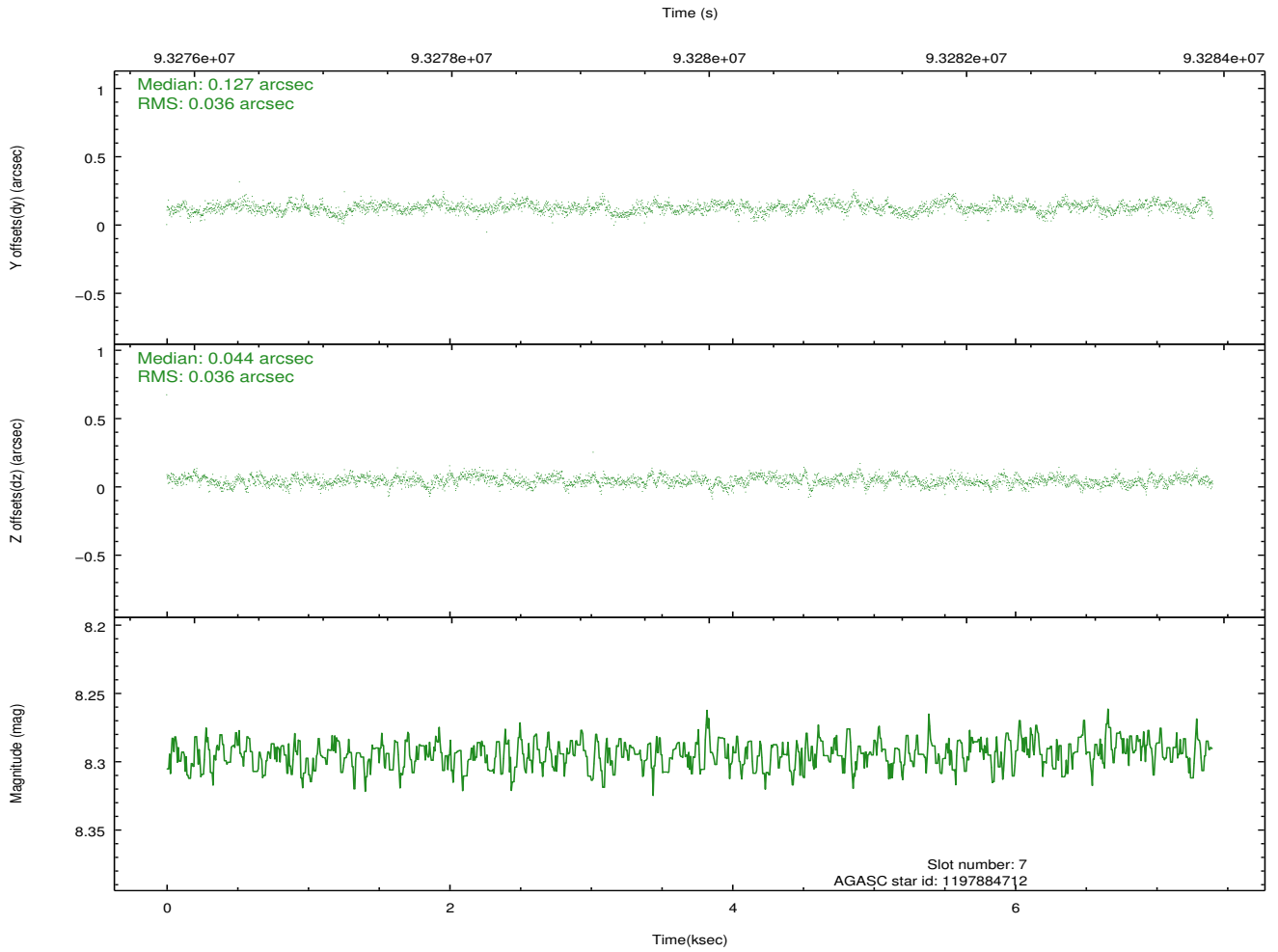
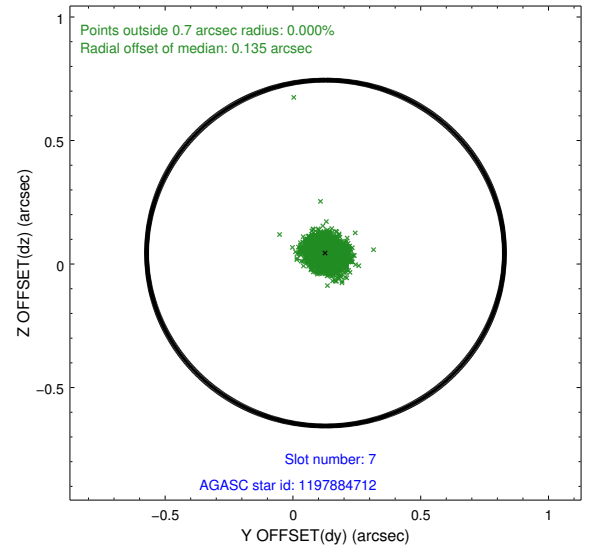
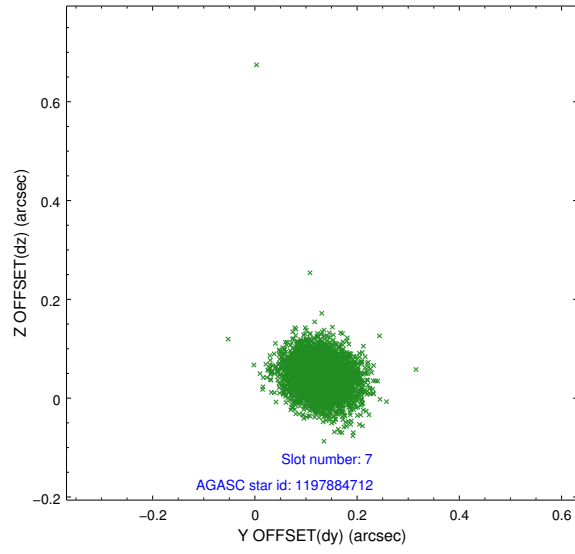
2.4.3 Slot 5



2.4.4 Slot 6

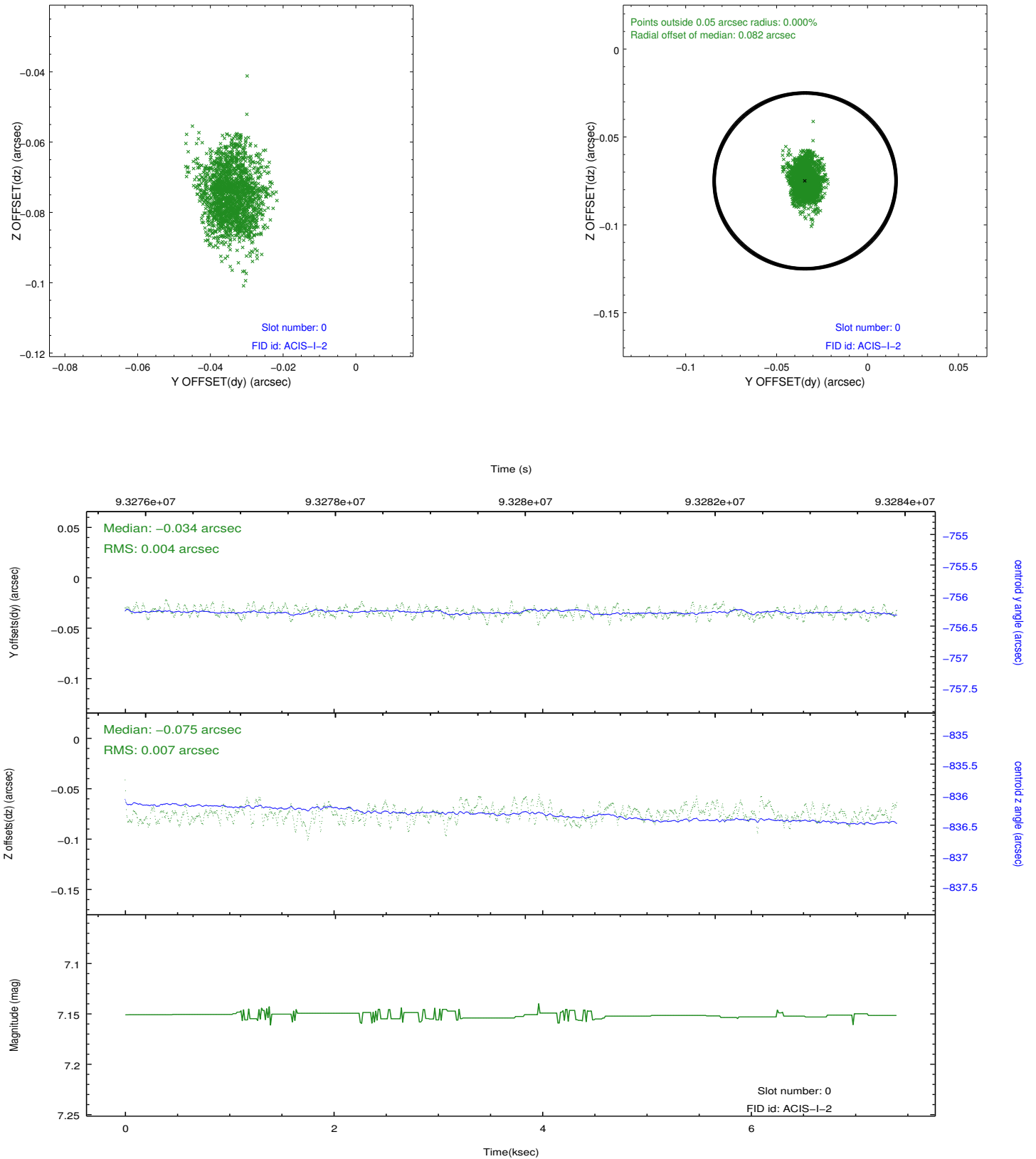


2.4.5 Slot 7

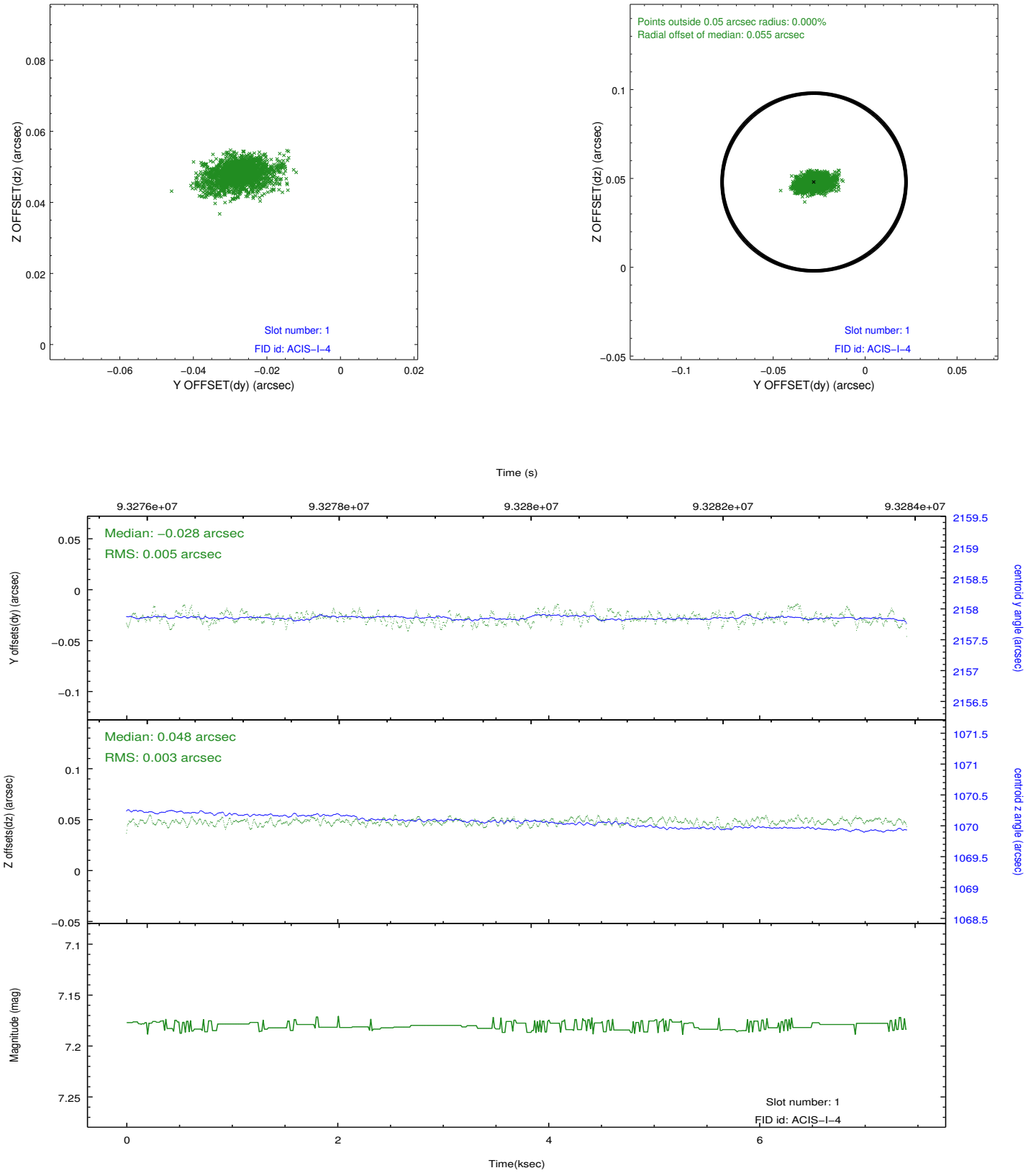


2.5 FID Slots

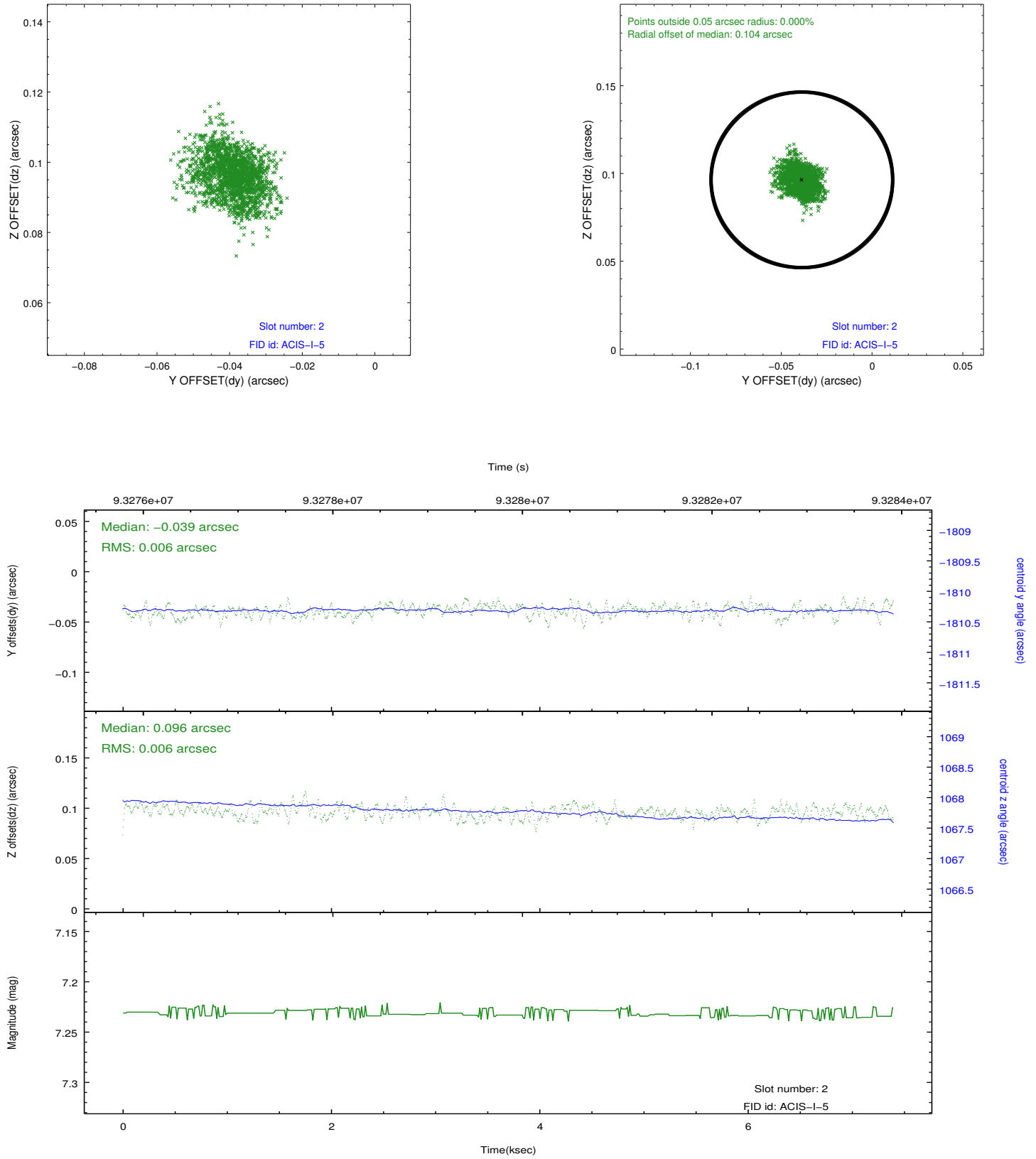
2.5.1 Slot 0



2.5.2 Slot 1



2.5.3 Slot 2



A Summary

A.1 Status

V&V Scientist	Joy Nichols
V&V Date (YYYY-MM-DD)	2012.10.11
V&V Edition	1
V&V Disposition and Status	OK
V&V Charge Time	6.956

A.2 Comments

There are 2 observations with the obsid number 1314. They appear in separate spacecraft loads with these duplicate numbers. Because the 2 obsids used different instrument configurations, the telemetry file of the other obsid 1314 was edited to create a new obsid number, obsid 62867. This obsid retains the 1314 designation.