

V&V Reference Report

L2 ASCDS Version : 8.4.5

Observation 12284 - L2 Version 2
Chandra X-Ray Center

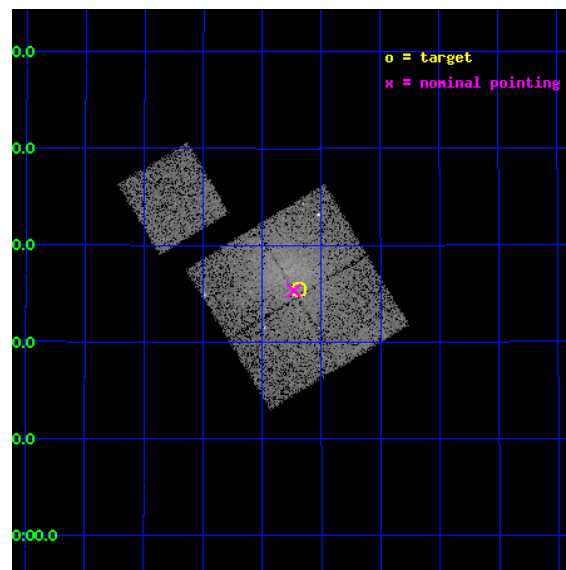
L2 Processing Date : Jul 6 2012

Contents

1	Front	2
2	OBI	3
2.1	OBI	3
2.1.1	Images	3
2.1.2	Bias	3
2.1.3	Parameters	4
2.1.4	Events	4
2.2	Compared Parameters	5
2.3	Aspect	6
2.4	Star Slots	9
2.4.1	Slot 3	9
2.4.2	Slot 4	10
2.4.3	Slot 5	11
2.4.4	Slot 6	12
2.4.5	Slot 7	13
2.5	FID Slots	14
2.5.1	Slot 0	14
2.5.2	Slot 1	15
2.5.3	Slot 2	16
A	Summary	17
A.1	Status	17
A.2	Comments	17

1 Front

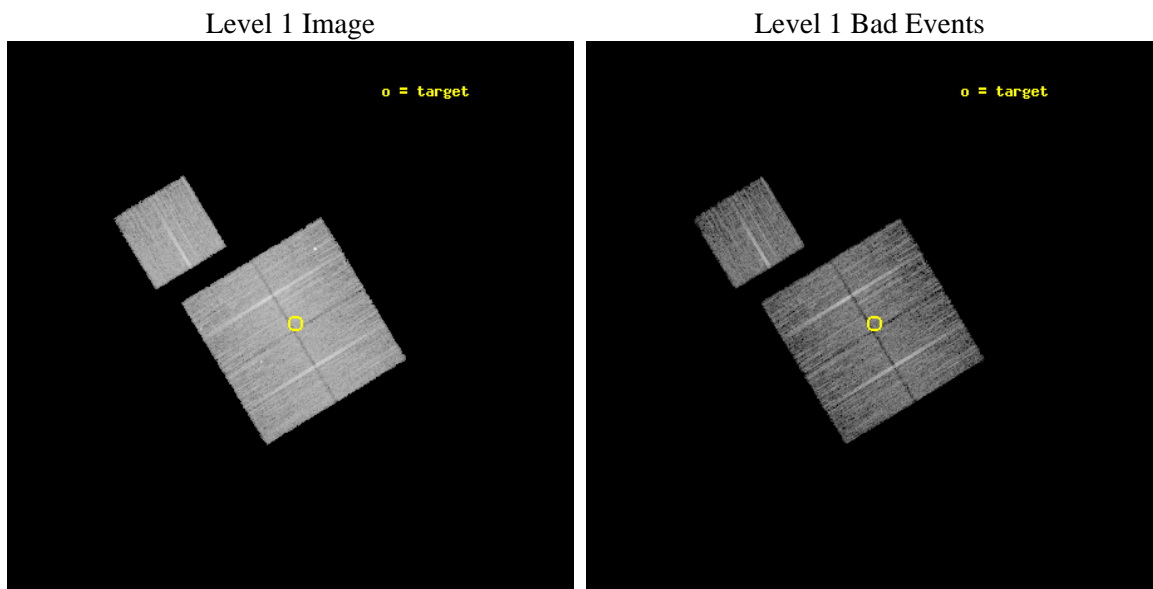
seq_num	801003	Sequence number
obs_id	12284	Observation id
title	A 'CENTENNIAL' SAMPLE OF THE 100 X-RAY BRIGHTEST GALAXY CLUSTERS	
observer	Dr. Alexey Vikhlinin	Principal investigator
object	A2249	Source name
dtcycle	0	
cycle	P	events from which exps? Prim/Second/Both
ra_targ	257.42375	Observer's specified target RA [deg]
dec_targ	34.423639	Observer's specified target Dec [deg]
ra_nom	257.43324721542	Nominal RA [deg]
dec_nom	34.421710803924	Nominal Dec [deg]
roll_nom	328.82707677419	Nominal Roll [deg]
revision	2	Processing version of data
ontime	10053.300077319	Sum of GTIs [s]
livetime	9921.9463106771	Livetime [s]
ontime0	10053.300077319	Sum of GTIs [s]
ontime1	10047.018126488	Sum of GTIs [s]
ontime2	10053.300077319	Sum of GTIs [s]
ontime3	10053.300077319	Sum of GTIs [s]
ontime6	10053.300077319	Sum of GTIs [s]
l2events	47518	Number of level 2 events



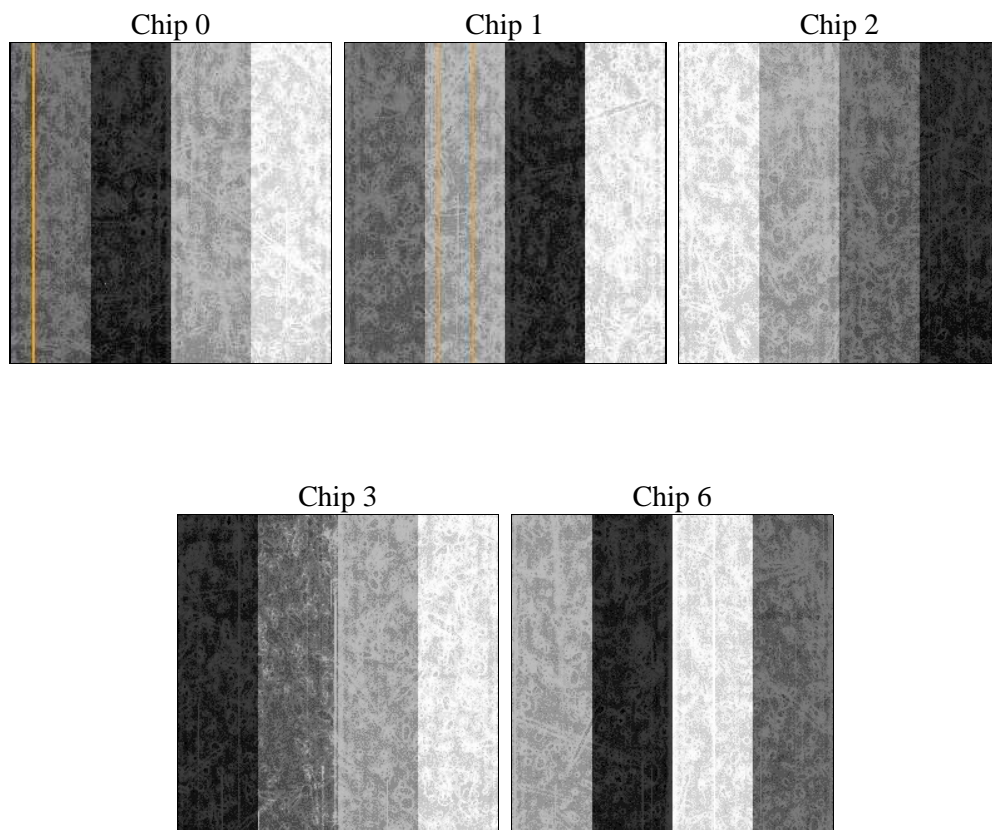
2 OBI

2.1 OBI

2.1.1 Images



2.1.2 Bias



2.1.3 Parameters

obi_num	0	Obi number	sched_exp_time	10000.000000	[s] Scheduled observation exposure time
ascdsver	8.4.5	Processing system revision	ontime	10053.300077319	Sum of GTIs [s]
caldbver	4.5.0	 	ontime0	10053.300077319	Sum of GTIs [s]
date	2012-07-06T14:22:44	Date and time of file creation	ontime1	10047.018126488	Sum of GTIs [s]
revision	2	Processing version of data	ontime2	10053.300077319	Sum of GTIs [s]
			ontime3	10053.300077319	Sum of GTIs [s]
			ontime6	10053.300077319	Sum of GTIs [s]
			l1events	366489	Number of level 1 events

2.1.4 Events

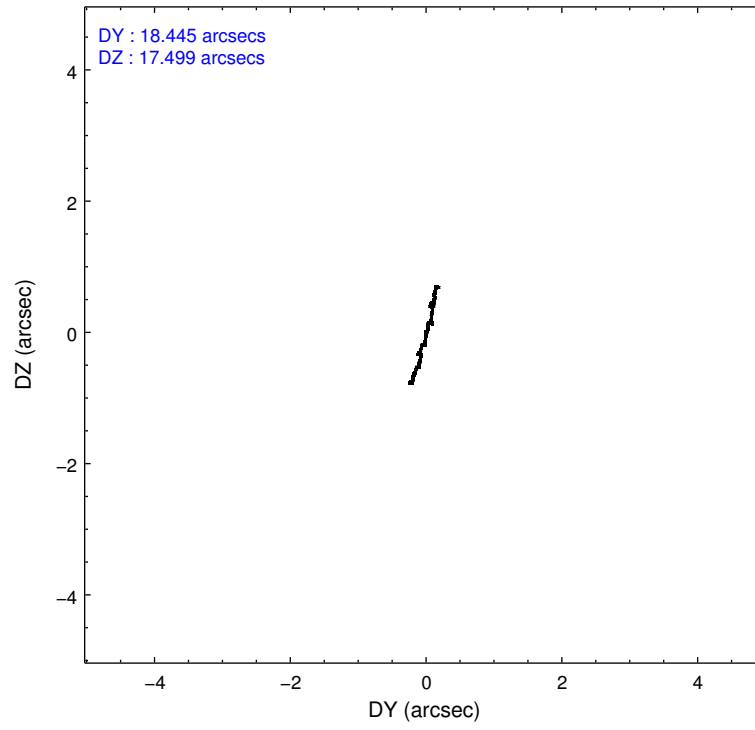
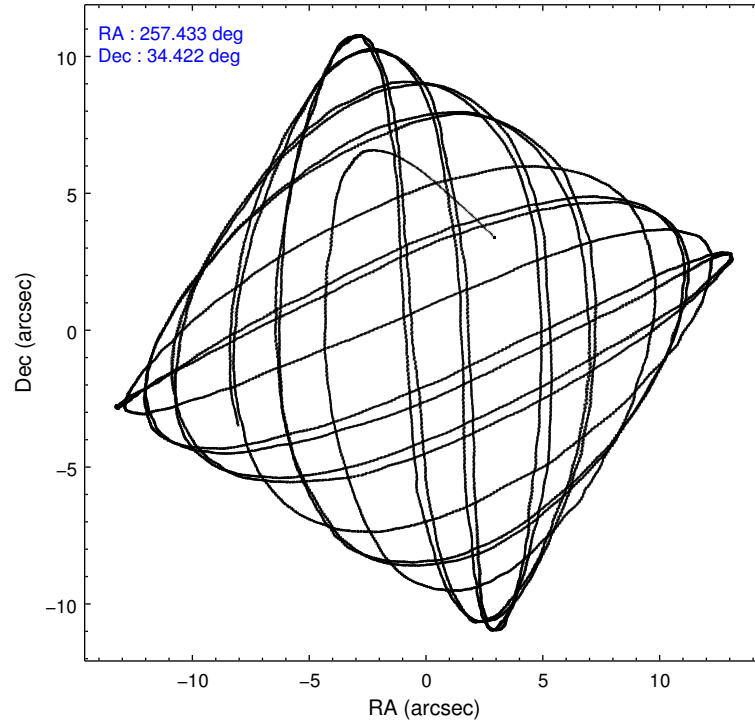
	ccd 0	ccd 1	ccd 2	ccd 3	ccd 6
level 1 events	69472	70836	78222	77535	70424
rejected events	60097	60098	65723	63646	62098
rejected %	86%	84%	84%	82%	88%

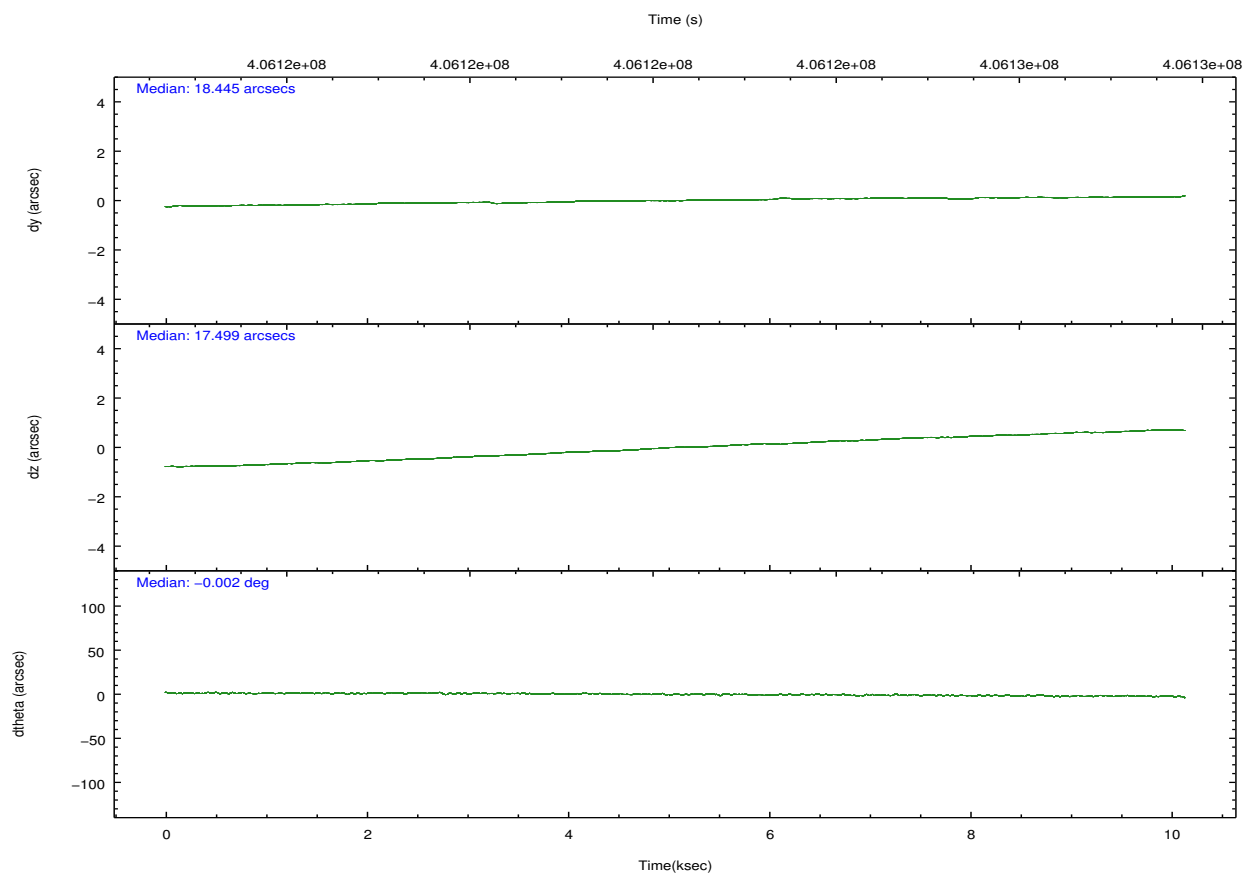
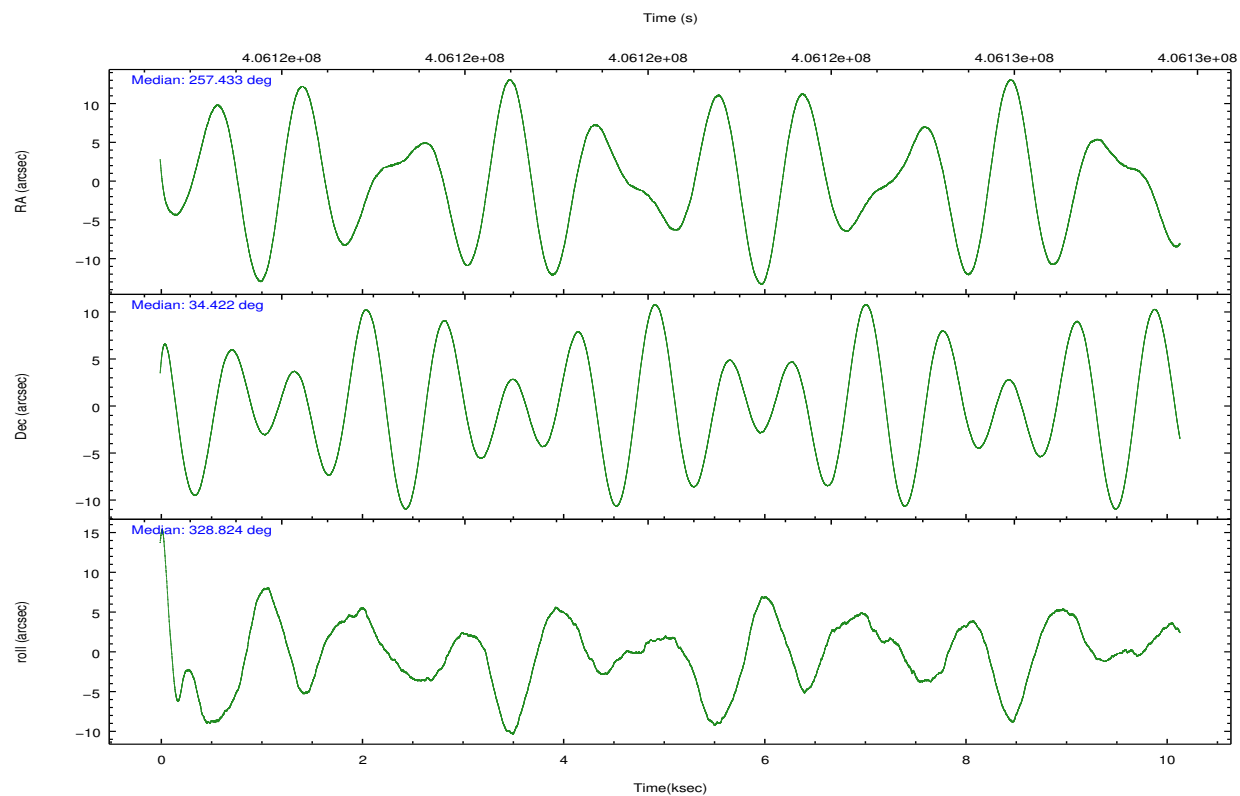
	ccd 0	ccd 1	ccd 2	ccd 3	ccd 6
grade 0 events	3917	4572	6688	7855	2948
	5%	6%	8%	10%	4%
grade 1 events	46	40	64	73	31
	0%	0%	0%	0%	0%
grade 2 events	2083	2395	2380	2303	1822
	2%	3%	3%	2%	2%
grade 3 events	896	986	925	1000	860
	1%	1%	1%	1%	1%
grade 4 events	823	937	913	1033	914
	1%	1%	1%	1%	1%
grade 5 events	3115	3296	2880	3462	3124
	4%	4%	3%	4%	4%
grade 6 events	1661	1850	1595	1700	1783
	2%	2%	2%	2%	2%
grade 7 events	56931	56760	62777	60109	58942
	81%	80%	80%	77%	83%

2.2 Compared Parameters

Parameter	Planned	Actual	Parameter	Planned	Actual
Instrument	ACIS	ACIS	Obspar format version number	7	7
Detector	ACIS-01236	ACIS-01236	Obspar file type	PREDICTED	ACTUAL
Grating	NONE	NONE	Obspar update status	NONE	UPDATED
Data mode	VFAINT	VFAINT	CCD I0 on	Y	Y
Observation mode	POINTING	POINTING	CCD I1 on	Y	Y
[deg] Pointing RA	257.399933	257.4332472154241	CCD I2 on	Y	Y
[deg] Pointing Dec	34.422153	34.42171080392439	CCD I3 on	Y	Y
[deg] Pointing Roll	328.637197	328.8270767741925	CCD S0 on	N	N
[mm] SIM focus pos	-0.782348	-0.7809083437167272	CCD S1 on	N	N
[mm] SIM defocus	0	0.001439871863259334	CCD S2 on	O1	Y
[mm] SIM translation stage pos	-233.592463	-233.5874344608287	CCD S3 on	N	N
[mm] SIM translation stage offset	0	-0.005018542100998502	CCD S4 on	N	N
[s] Observation start time (MET)	406117311.184000	406116172.86055	CCD S5 on	N	N
Observation start date	2010-11-14T10:20:45	2010-11-14T10:02:52	Number of optional ACIS chips dropped	0	0
[s] Observation end time (MET)	406127311.184000	406128822.89871	On-chip summing requested	N	N
Observation end date	2010-11-14T13:07:25	2010-11-14T13:33:42	Subarray requested	NONE	NONE
Read mode	TIMED	TIMED	Alternating exposures requested	N	N
			[s] Primary exposure time	0.000000	3.1

2.3 Aspect



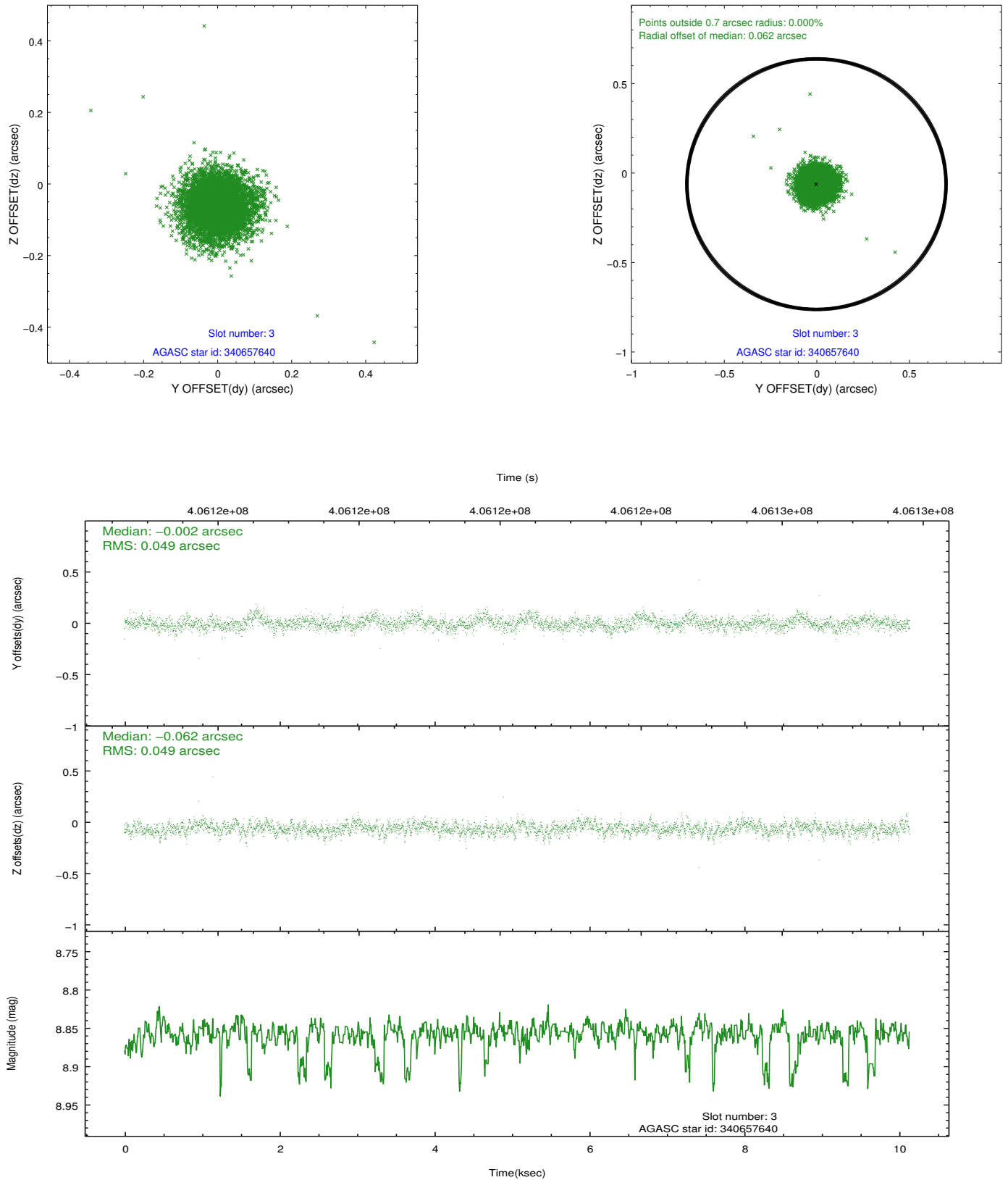


Slot Statistics

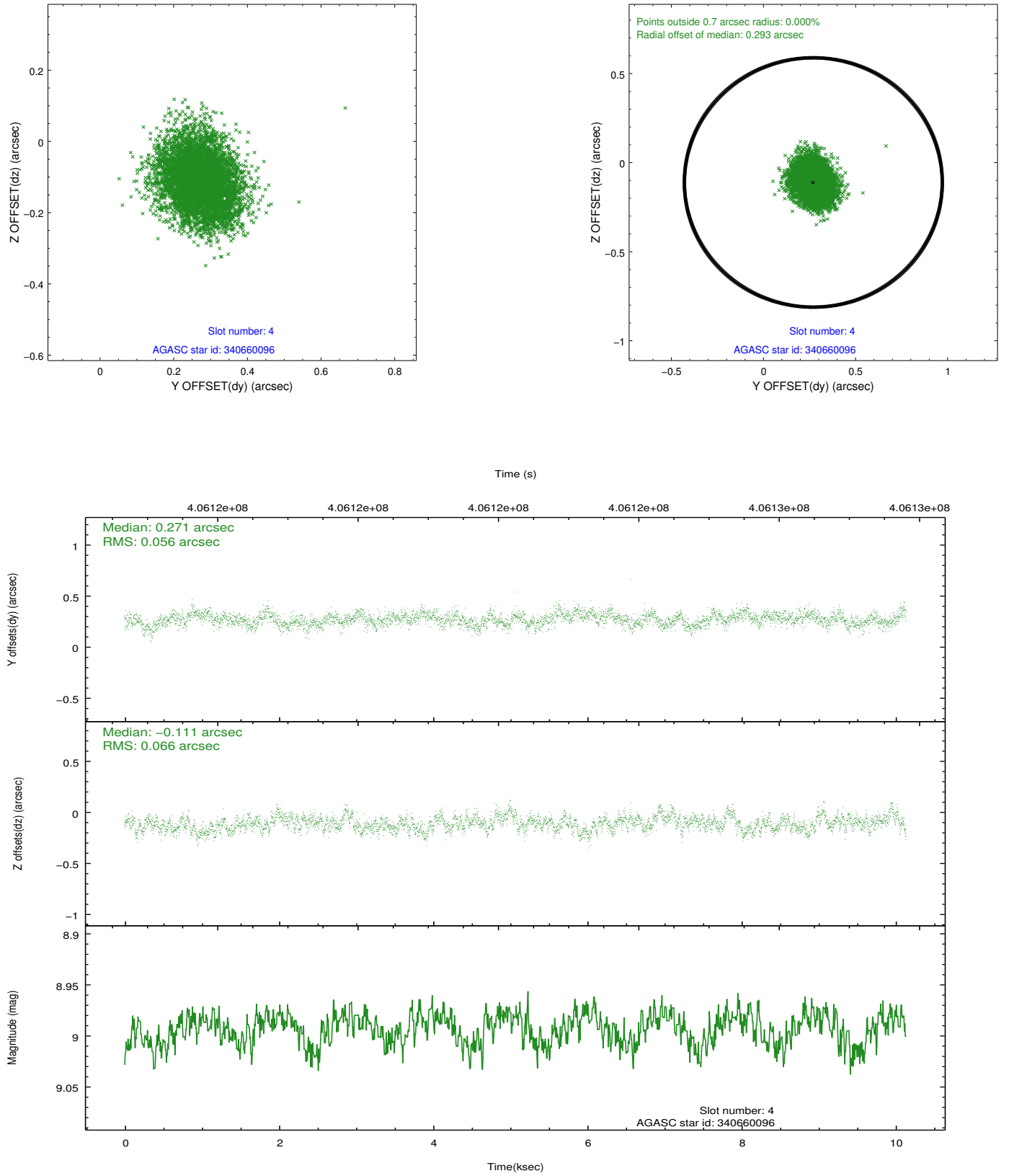
slot	status	id	mag	n_pts	med_dy	med_dz	dr1	dr2	ra	dec	mean_y	mean_z
0	FID	ACIS-I-1	7.02	2473	0.070	-0.009	0.022	0.042	0.000000	0.000000	921.00	-841.14
1	FID	ACIS-I-5	6.99	2474	-0.255	0.066	0.007	0.014	0.000000	0.000000	-1827.14	1056.17
2	FID	ACIS-I-6	7.02	2472	0.094	0.012	0.020	0.038	0.000000	0.000000	386.00	1701.21
3	GUIDE	340657640	8.86	4940	-0.002	-0.062	0.072	0.119	256.921021	34.687196	-1708.50	79.85
4	GUIDE	340660096	8.99	4942	0.271	-0.111	0.092	0.149	256.799365	34.332754	-1359.41	-1199.48
5	GUIDE	340671152	6.58	4947	-0.110	-0.113	0.072	0.117	257.131968	35.033987	-1822.48	1471.01
6	GUIDE	340528160	8.40	4946	-0.208	0.255	0.075	0.122	256.487691	34.097893	-1721.09	-2401.10
7	GUIDE	340670664	9.55	4926	0.047	0.034	0.114	0.195	258.303416	34.520740	2097.32	1707.89

2.4 Star Slots

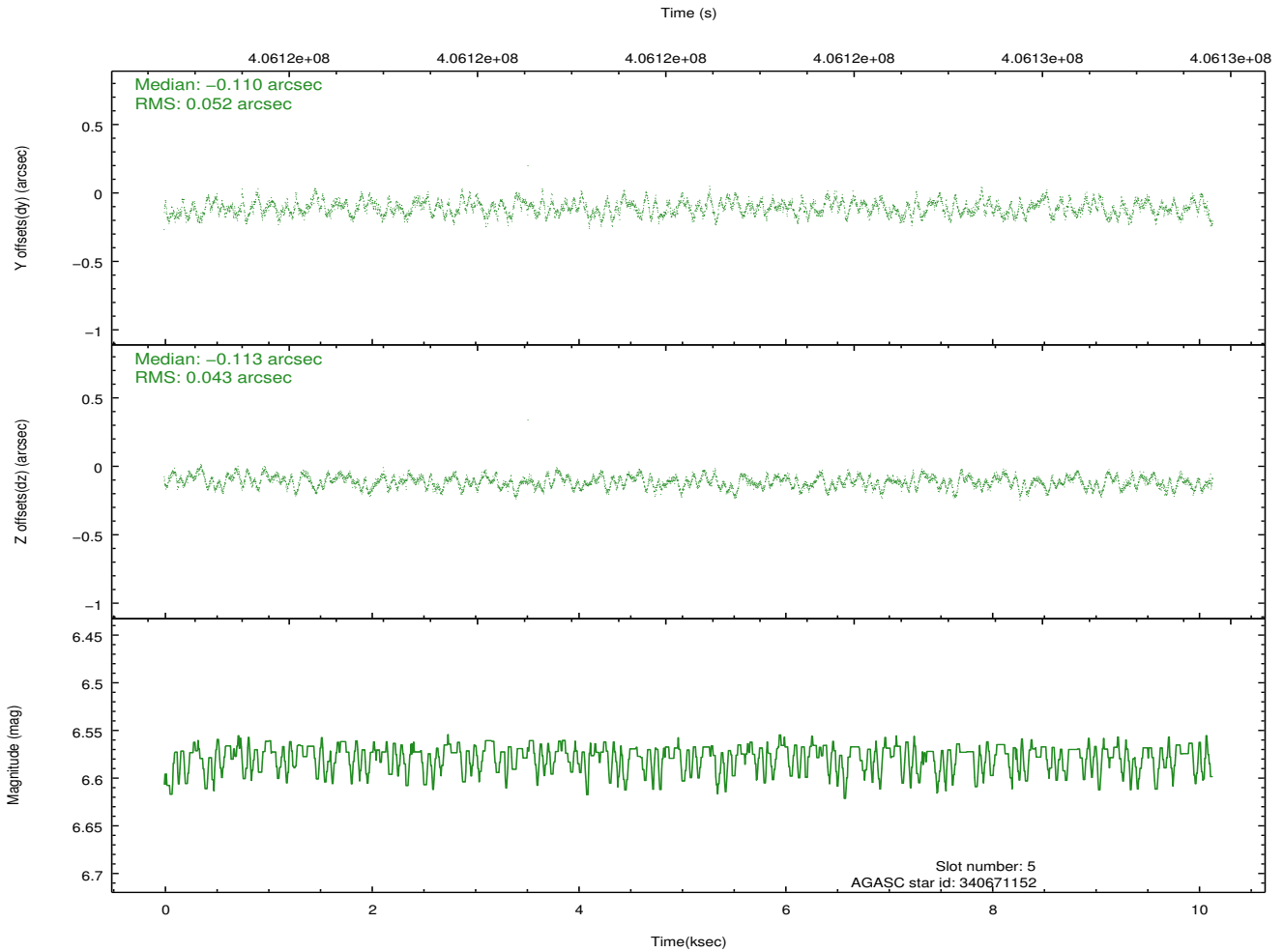
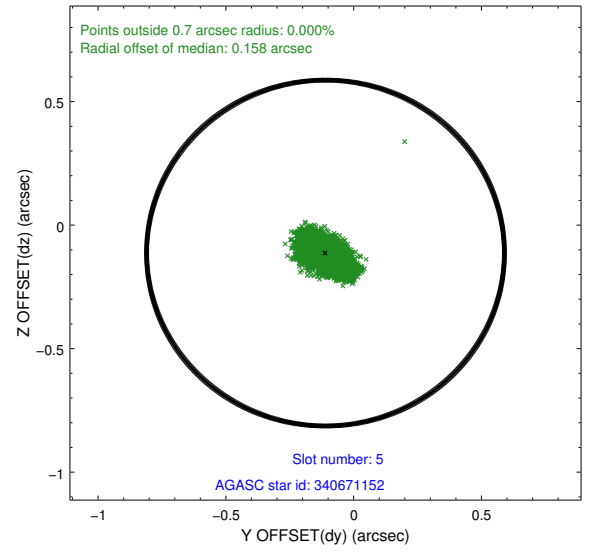
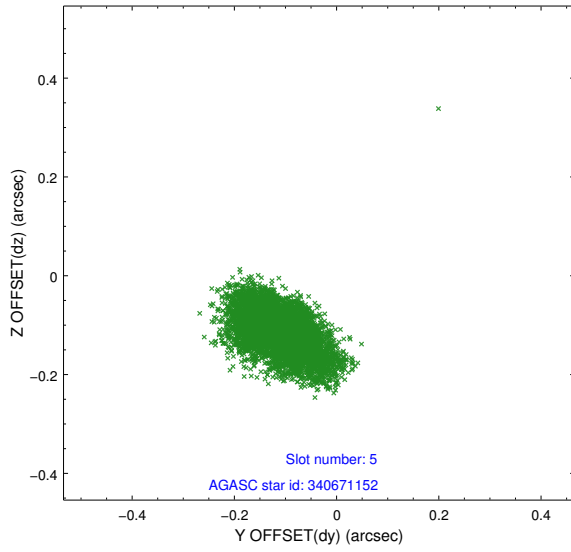
2.4.1 Slot 3



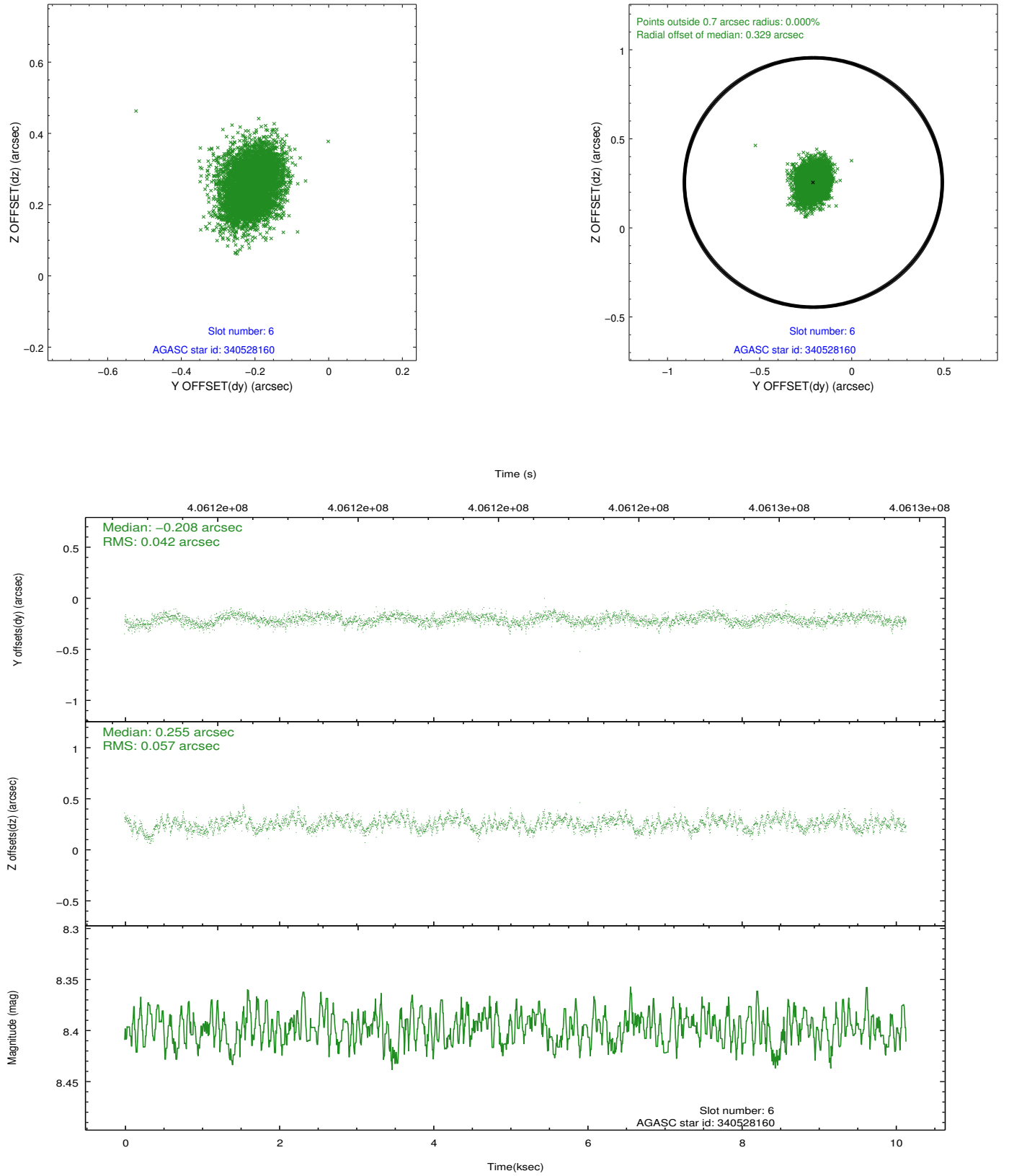
2.4.2 Slot 4



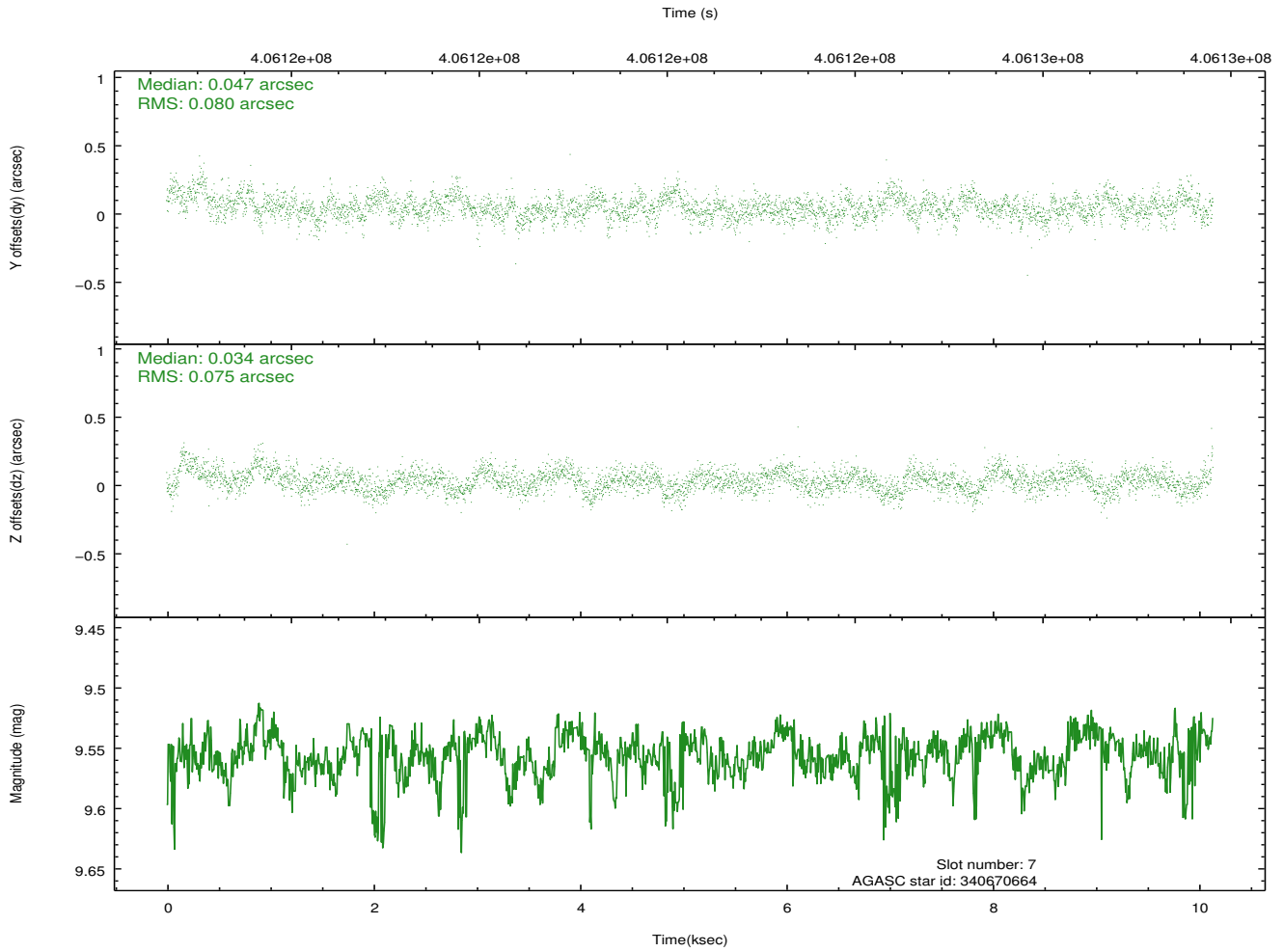
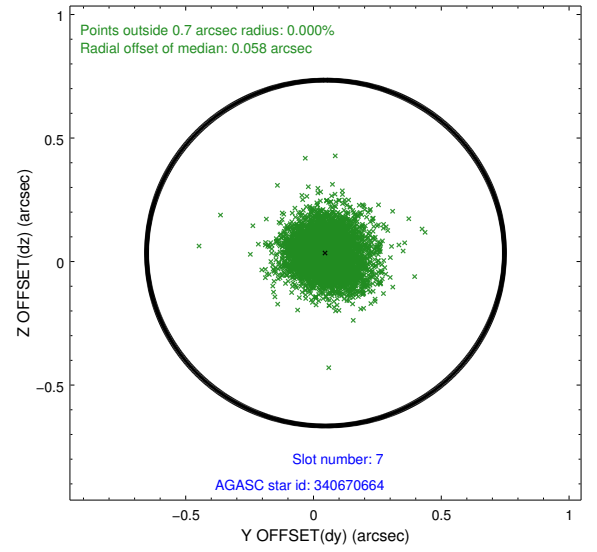
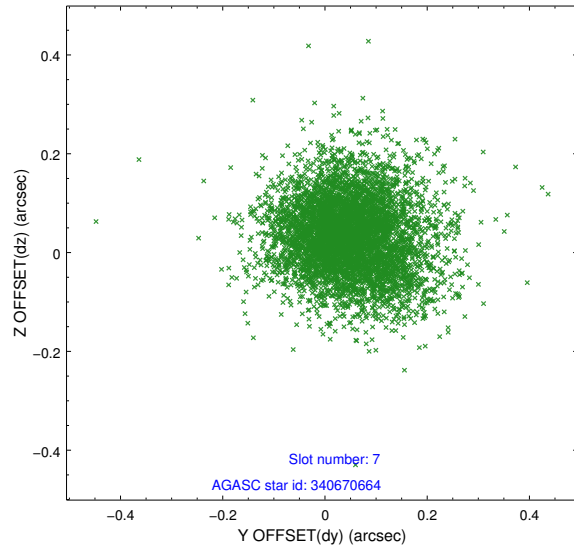
2.4.3 Slot 5



2.4.4 Slot 6

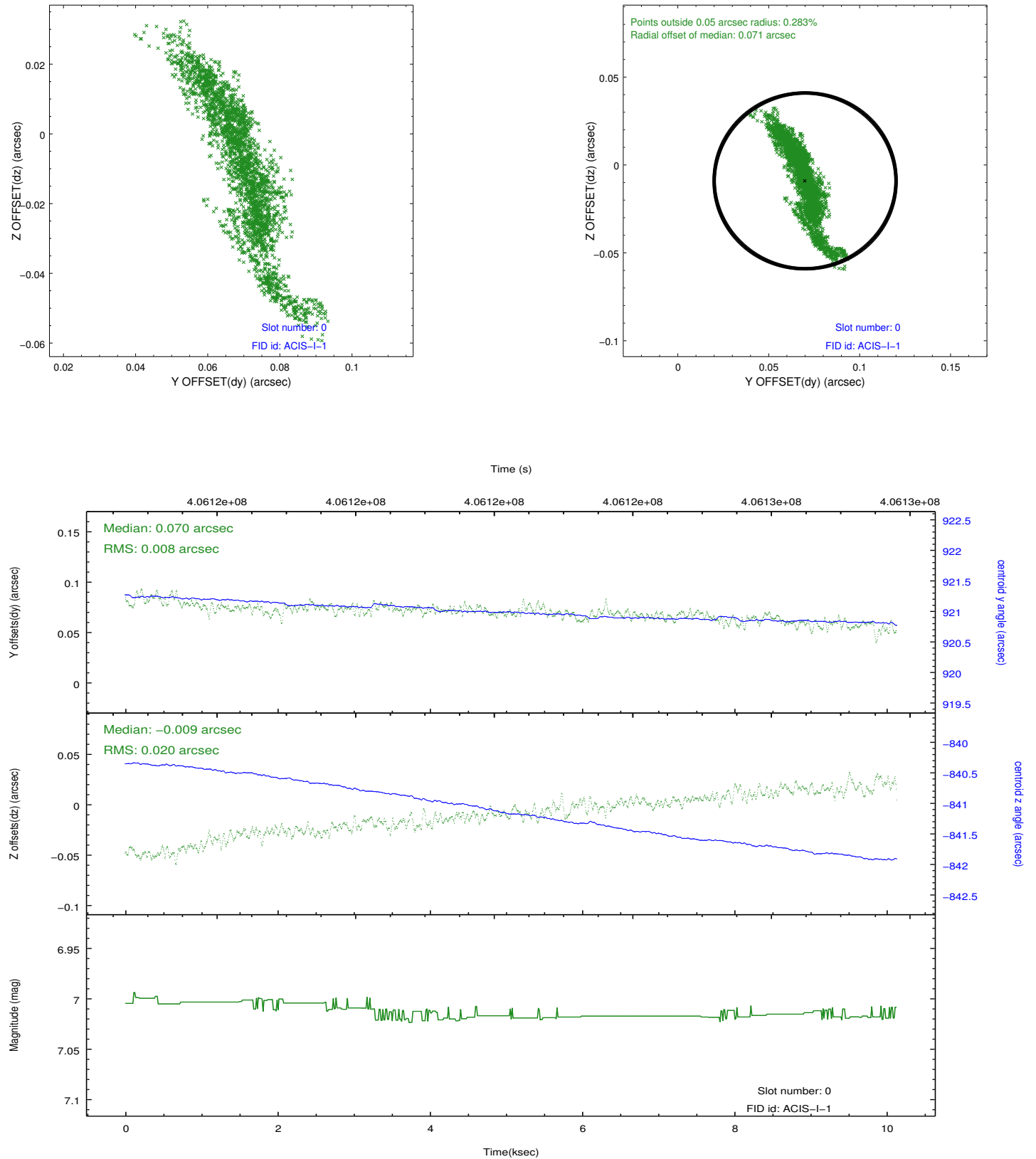


2.4.5 Slot 7

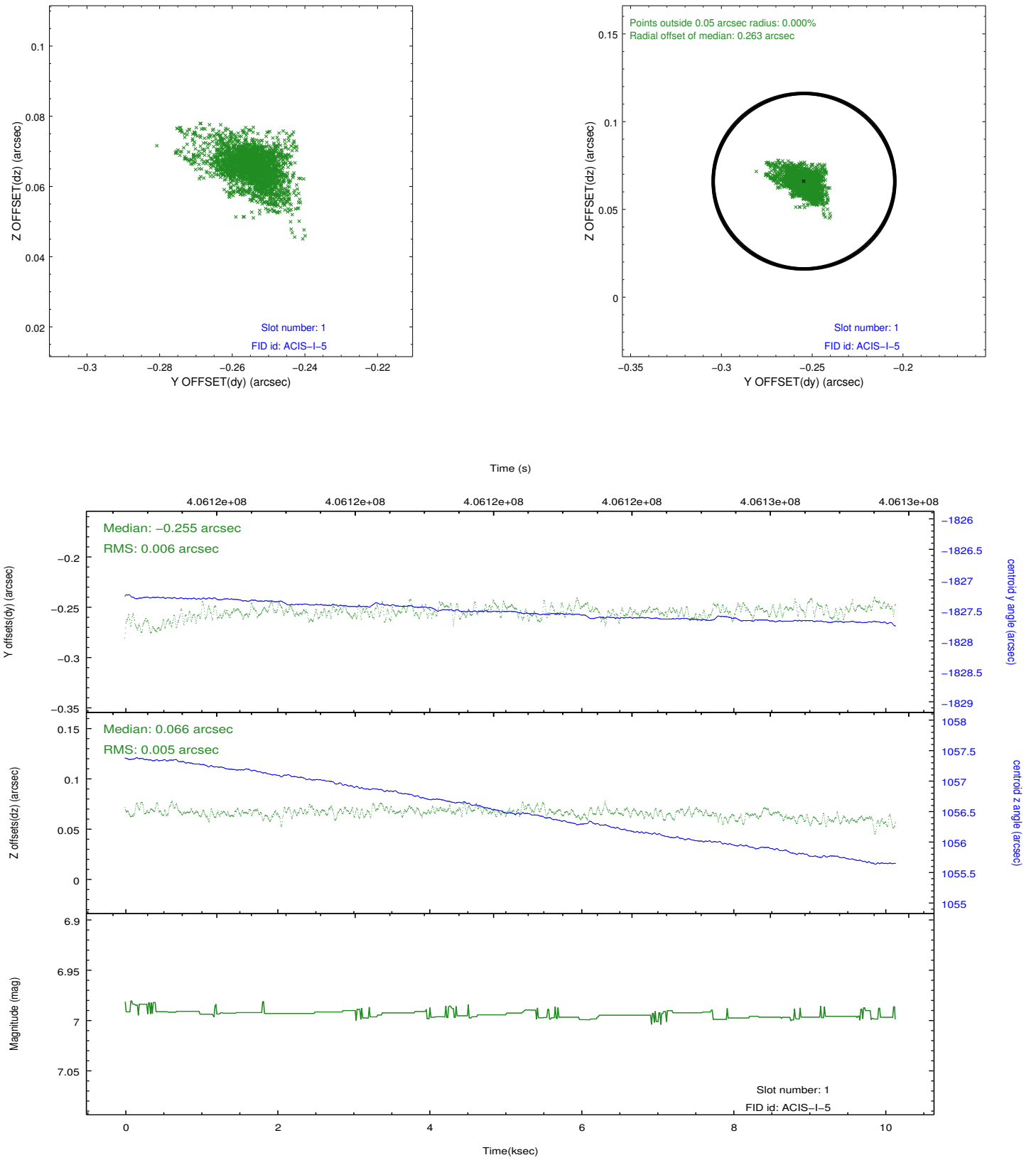


2.5 FID Slots

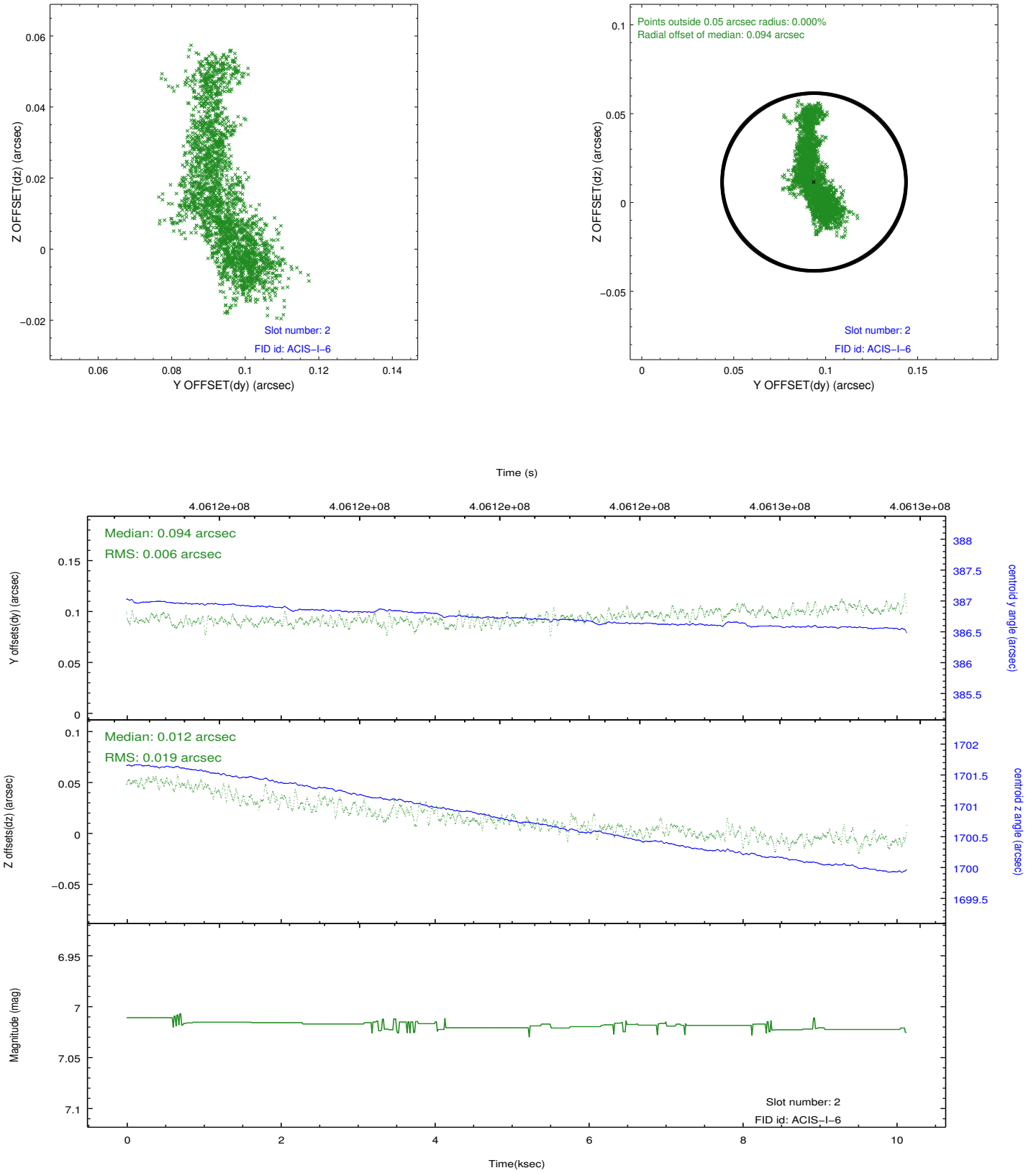
2.5.1 Slot 0



2.5.2 Slot 1



2.5.3 Slot 2



A Summary

A.1 Status

V&V Scientist	Beth Sundheim
V&V Date (YYYY-MM-DD)	2012.07.16
V&V Edition	1
V&V Disposition and Status	OK
V&V Charge Time	10.053300077319

A.2 Comments