

V&V Reference Report

L2 ASCDS Version : 8.2.1

Observation 1104 - L2 Version 2

Chandra X-Ray Center

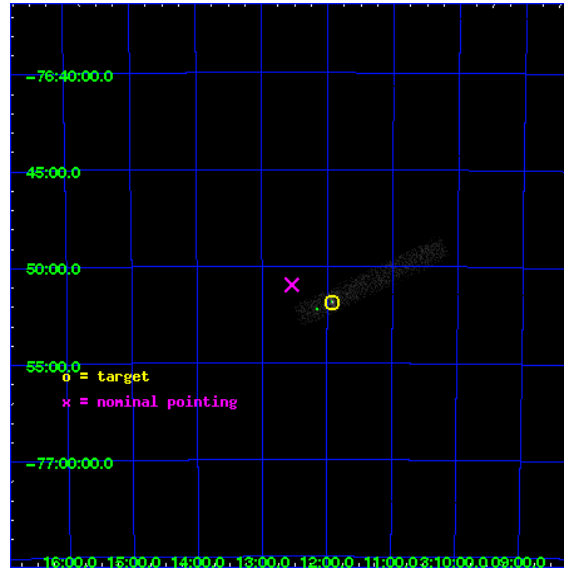
L2 Processing Date : Jan 13 2010

Contents

1	Front	2
2	OBI	3
2.1	OBI	3
2.1.1	Images	3
2.1.2	Bias	3
2.1.3	Parameters	4
2.1.4	Events	4
2.2	Compared Parameters	5
2.3	Aspect	6
2.4	Star Slots	9
2.4.1	Slot 3	9
2.4.2	Slot 4	10
2.4.3	Slot 5	11
2.4.4	Slot 6	12
2.4.5	Slot 7	13
2.5	FID Slots	14
2.5.1	Slot 0	14
2.5.2	Slot 1	15
2.5.3	Slot 2	16
3	Point Sources	17
A	Summary	18
A.1	Status	18
A.2	Comments	18

1 Front

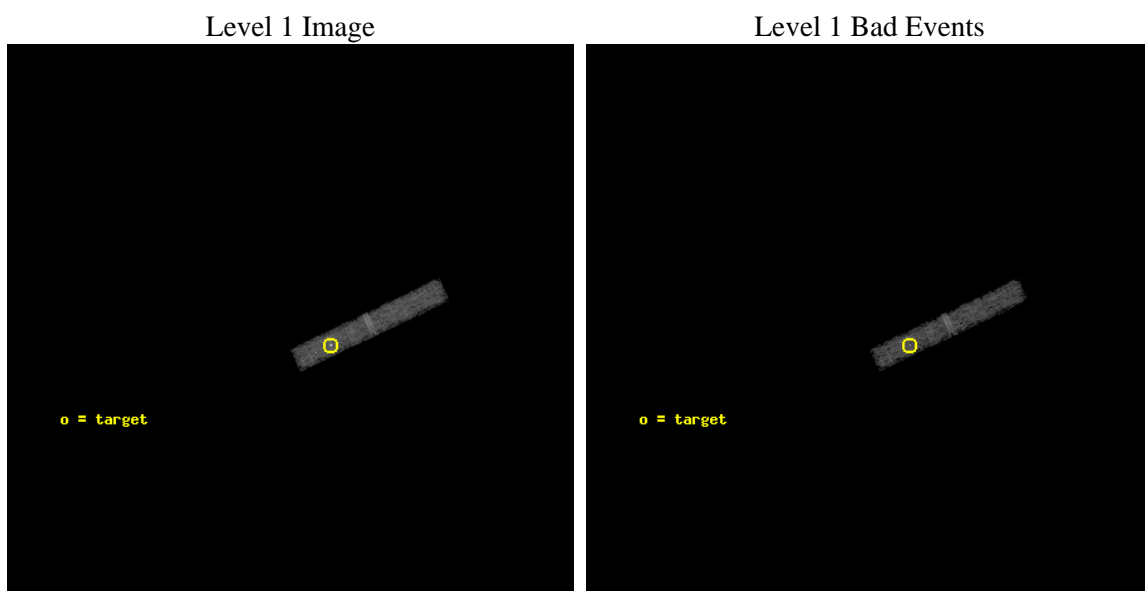
seq_num	780054	Sequence number
obs_id	1104	Observation id
title	 	Proposal title
observer	Dr. CXC Calibration	Principal investigator
object	PKS0312-770	Source name
dtcycle	0	
cycle	P	events from which exps? Prim/Second/Both
ra_targ	47.98	Observer's specified target RA
dec_targ	-76.864167	Observer's specified target Dec
ra_nom	48.135360822392	Nominal RA
dec_nom	-76.849502734559	Nominal Dec
roll_nom	64.835048610895	Nominal Roll
revision	2	Processing version of data
ontime	13860.876969784	Sum of GTIs [s]
livetime	12809.475241927	Livetime [s]
ontime3	13860.876969784	Sum of GTIs [s]
l2events	9504	Number of level 2 events



2 OBI

2.1 OBI

2.1.1 Images



2.1.2 Bias

Chip 3



2.1.3 Parameters

obi_num	0	Obi number	sched_exp_time	14000.000000	Scheduled observation exposure time
ascdsver	8.2.1	ASCDS version number	ontime	13860.876969784	Sum of GTIs [s]
caldbver	4.1.5	 	ontime3	13860.876969784	Sum of GTIs [s]
date	2010-01-13T07:29:14	Date and time of file creation	ll events	39117	Number of level 1 events
revision	3	Processing version of data			

2.1.4 Events

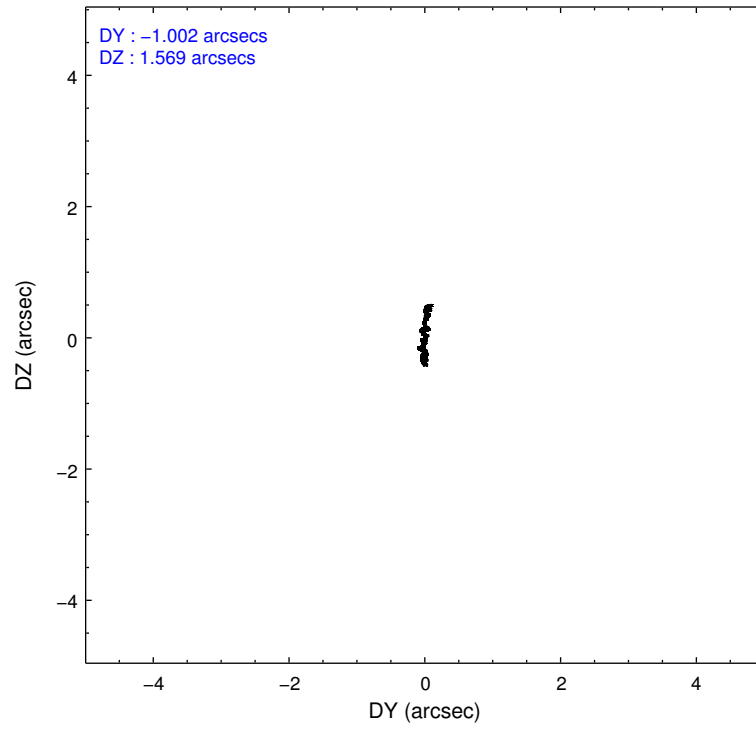
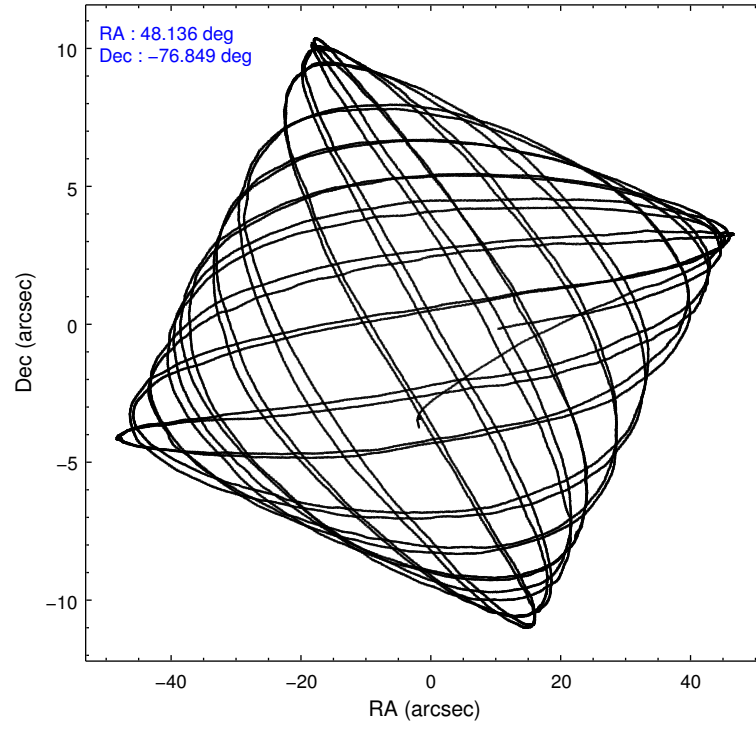
	ccd 3
level 1 events	39117
rejected events	28909
rejected %	73%

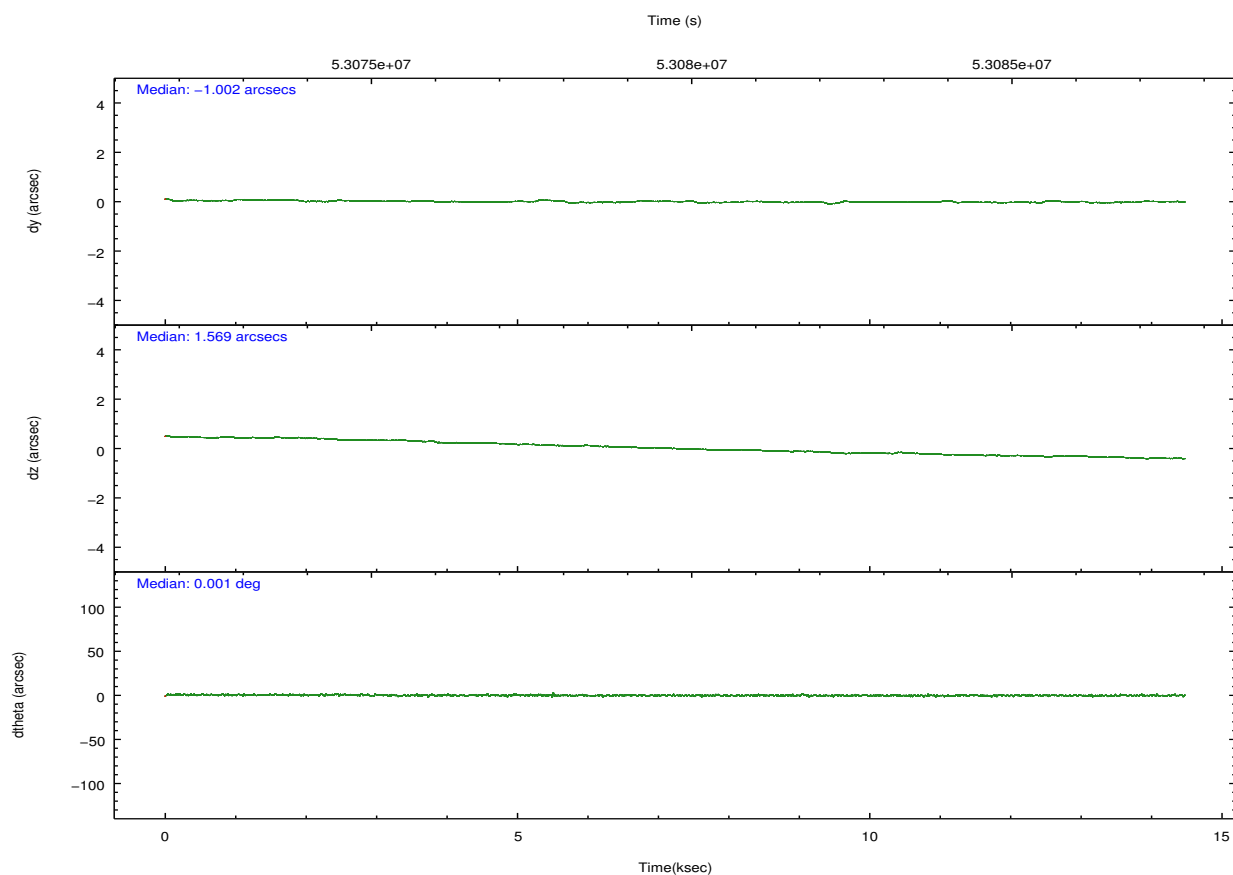
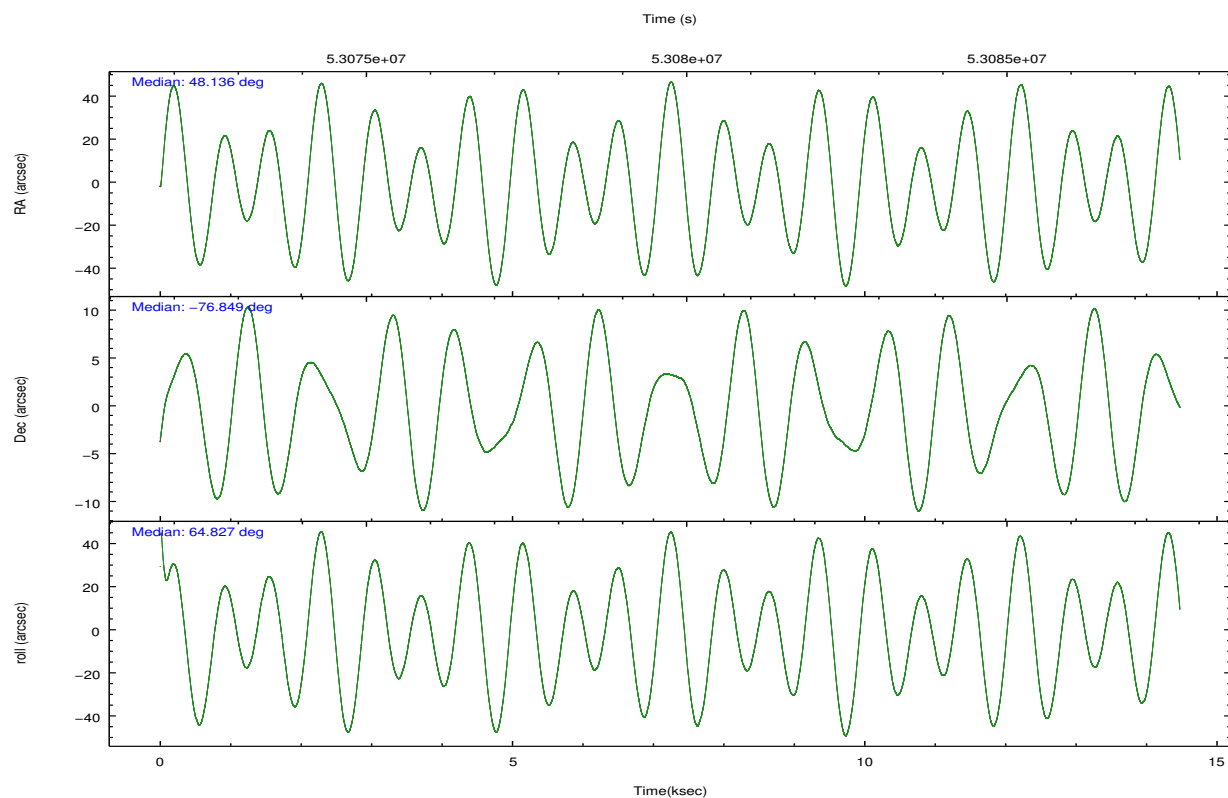
	ccd 3
grade 0 events	6371
	16%
grade 1 events	213
	0%
grade 2 events	1705
	4%
grade 3 events	730
	1%
grade 4 events	713
	1%
grade 5 events	468
	1%
grade 6 events	691
	1%
grade 7 events	28226
	72%

2.2 Compared Parameters

Parameter	Planned	Actual	Parameter	Planned	Actual
Instrument	ACIS	ACIS	Obspar format version number	6	6
Detector	ACIS-3	ACIS-3	Obspar file type	PREDICTED	ACTUAL
Grating	NONE	NONE	Obspar update status	NONE	UPDATED
Data mode	FAINT	FAINT	Number of optional ACIS chips dropped	0	0
Observation mode	POINTING	POINTING	On-chip summing requested	N	N
Pointing RA	48.142603	48.13536082239214	Subarray requested	CUSTOM	1/8
Pointing Dec	-76.877295	-76.84950273455904	Subarray start row	730	730
Pointing Roll	64.633361	64.8350486108946	Subarray row count	128	128
SIM focus pos (mm)	-0.782348	-0.7809083437167272	Alternating exposures requested	N	N
SIM defocus (mm)	0	0.001439871863259334	Primary exposure time	0.000000	0.5
SIM translation stage pos (mm)	-233.592463	-233.5874344608287			
SIM translation stage offset (mm)	0	-0.005018542100998502			
Observation start time	53072978.184000	53071855.13174			
Observation start date	1999-09-07T06:28:34	1999-09-07T06:10:55			
Observation end time	53086978.184000	53087112.257288			
Observation end date	1999-09-07T10:21:54	1999-09-07T10:25:12			
Read mode	TIMED	TIMED			

2.3 Aspect



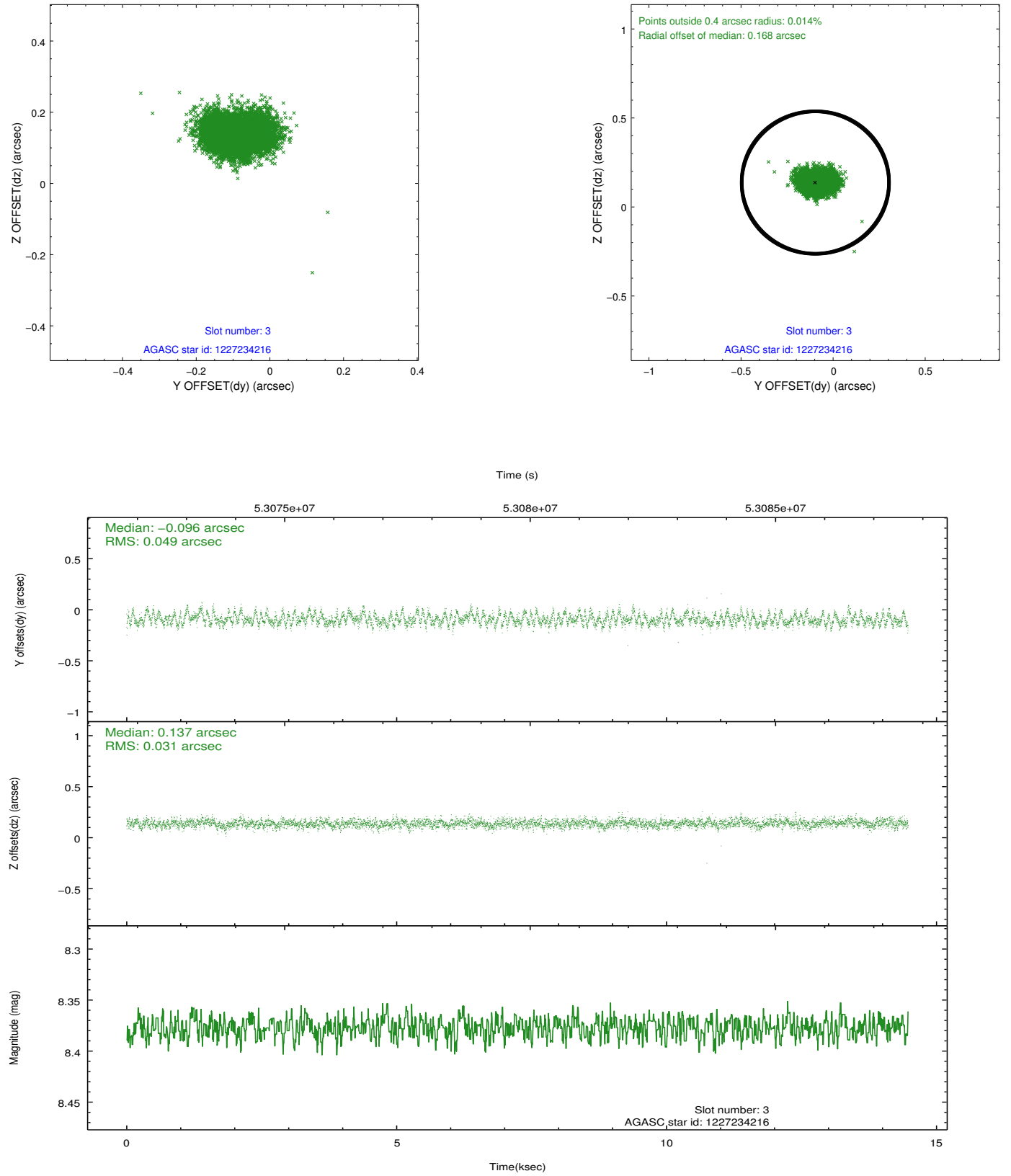


Slot Statistics

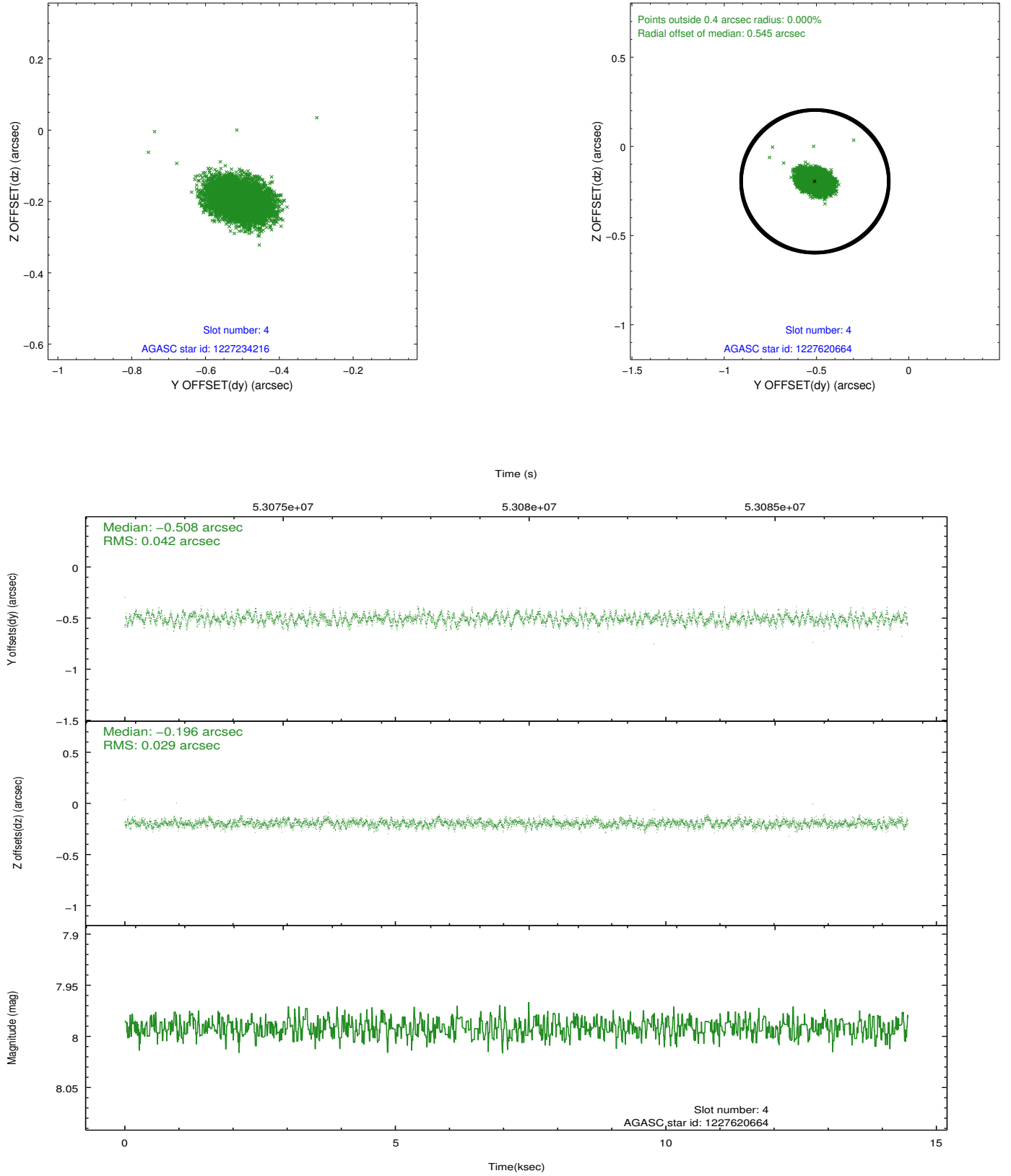
slot	status	id	mag	n_pts	med_dy	med_dz	dr1	dr2	ra	dec	mean_y	mean_z
0	FID	ACIS-I-2	7.21	7059	-0.061	0.019	0.010	0.017	0.000000	0.000000	-753.38	-831.14
1	FID	ACIS-I-4	7.23	7057	0.123	0.036	0.007	0.011	0.000000	0.000000	2160.94	1074.83
2	FID	ACIS-I-5	7.23	7061	-0.163	0.014	0.010	0.016	0.000000	0.000000	-1807.09	1072.99
3	GUIDE	1227234216	8.38	7058	-0.096	0.137	0.061	0.101	51.506981	-76.616205	1977.45	-2162.22
4	GUIDE	1227620664	7.99	7061	-0.508	-0.196	0.054	0.087	46.150563	-77.166043	-1646.53	982.42
5	GUIDE	1227629440	9.11	7056	-0.145	-0.035	0.066	0.109	48.268116	-77.028500	-449.05	-323.94
6	GUIDE	1227104240	9.79	7051	-0.118	0.160	0.095	0.153	48.955462	-76.524572	1434.87	-72.91
7	GUIDE	1227097864	9.92	7057	0.865	-0.067	0.090	0.148	46.669937	-76.763312	-162.26	1266.87

2.4 Star Slots

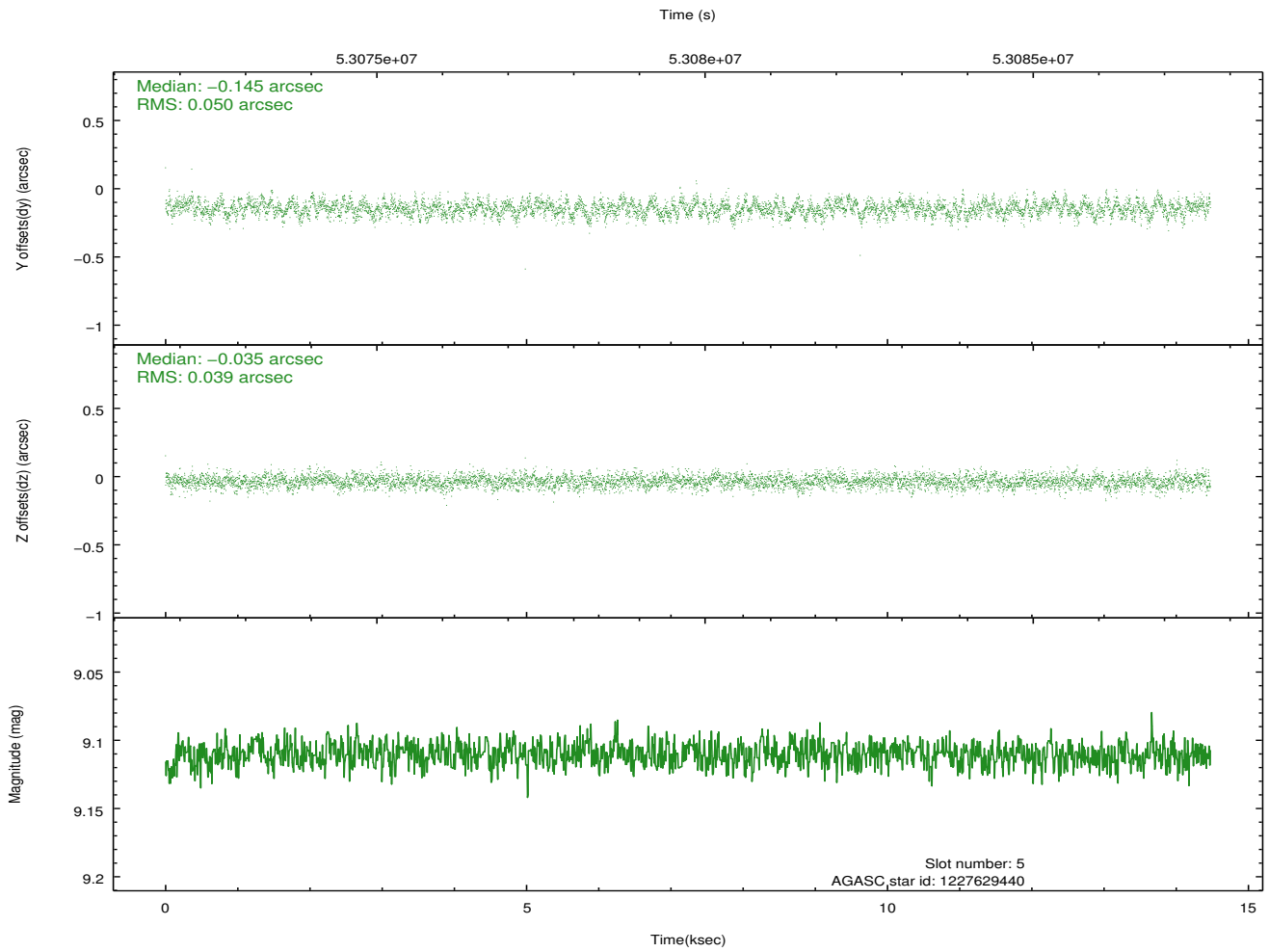
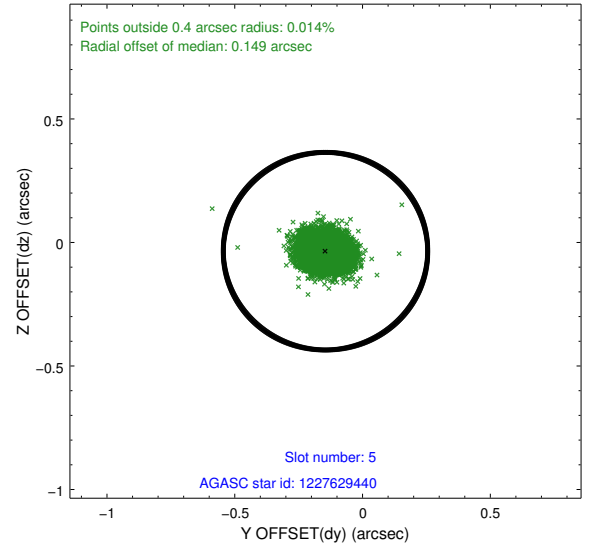
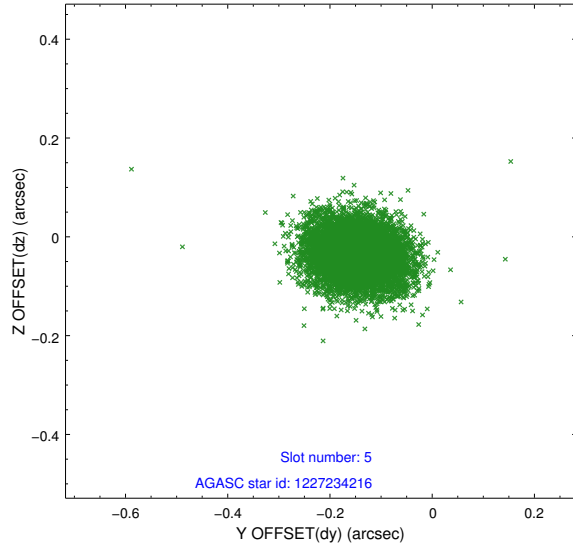
2.4.1 Slot 3



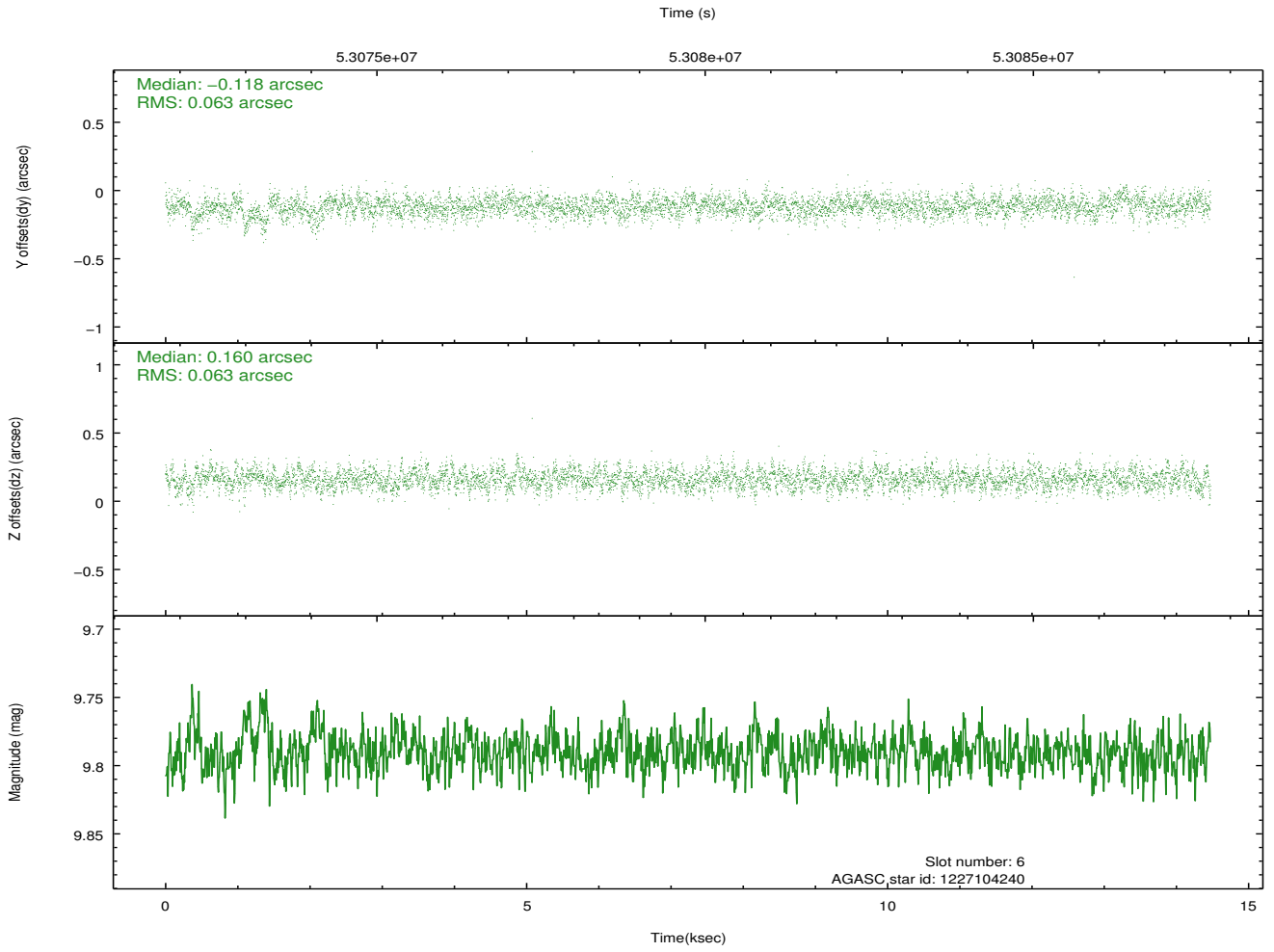
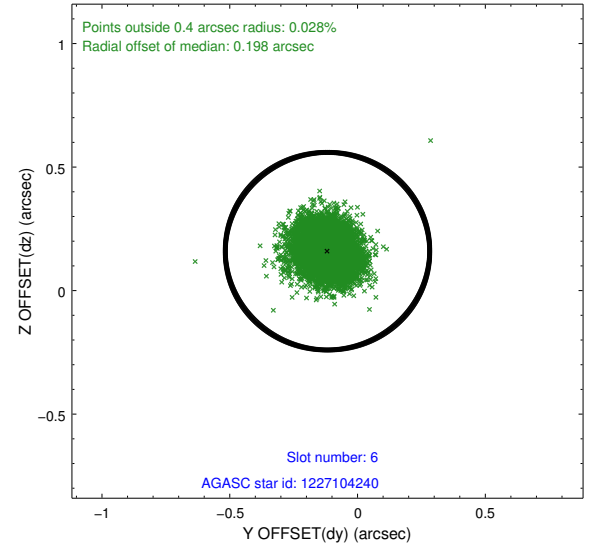
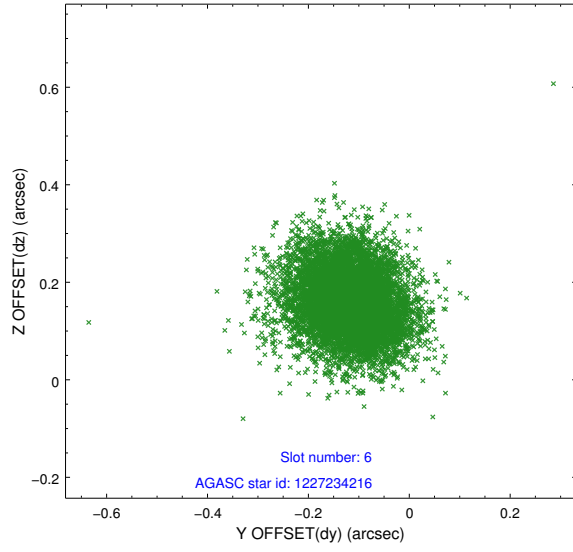
2.4.2 Slot 4



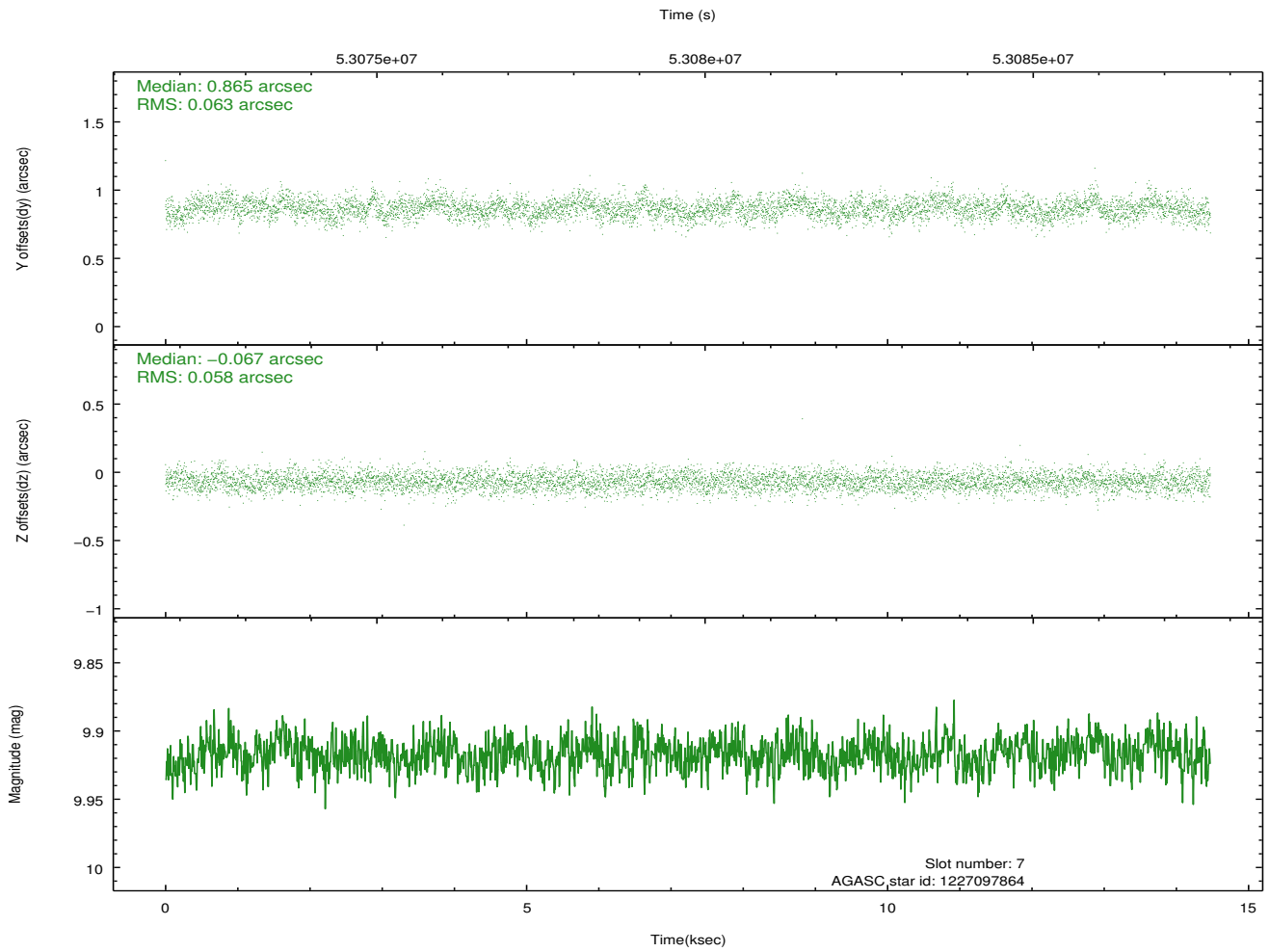
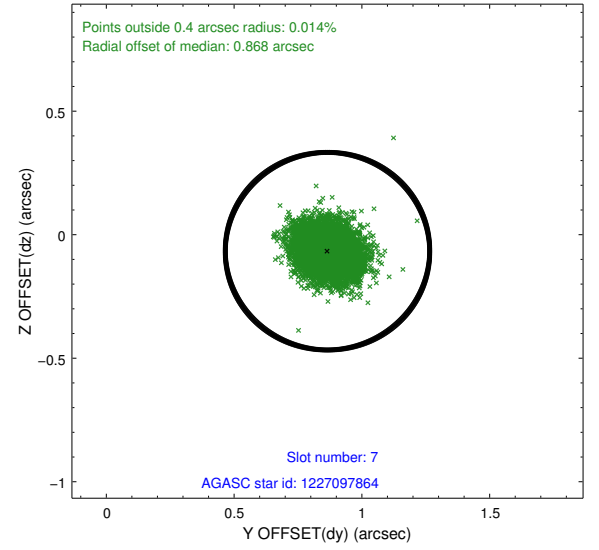
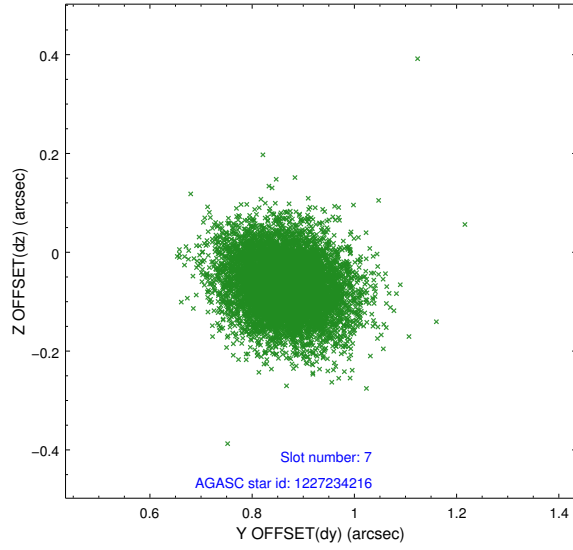
2.4.3 Slot 5



2.4.4 Slot 6

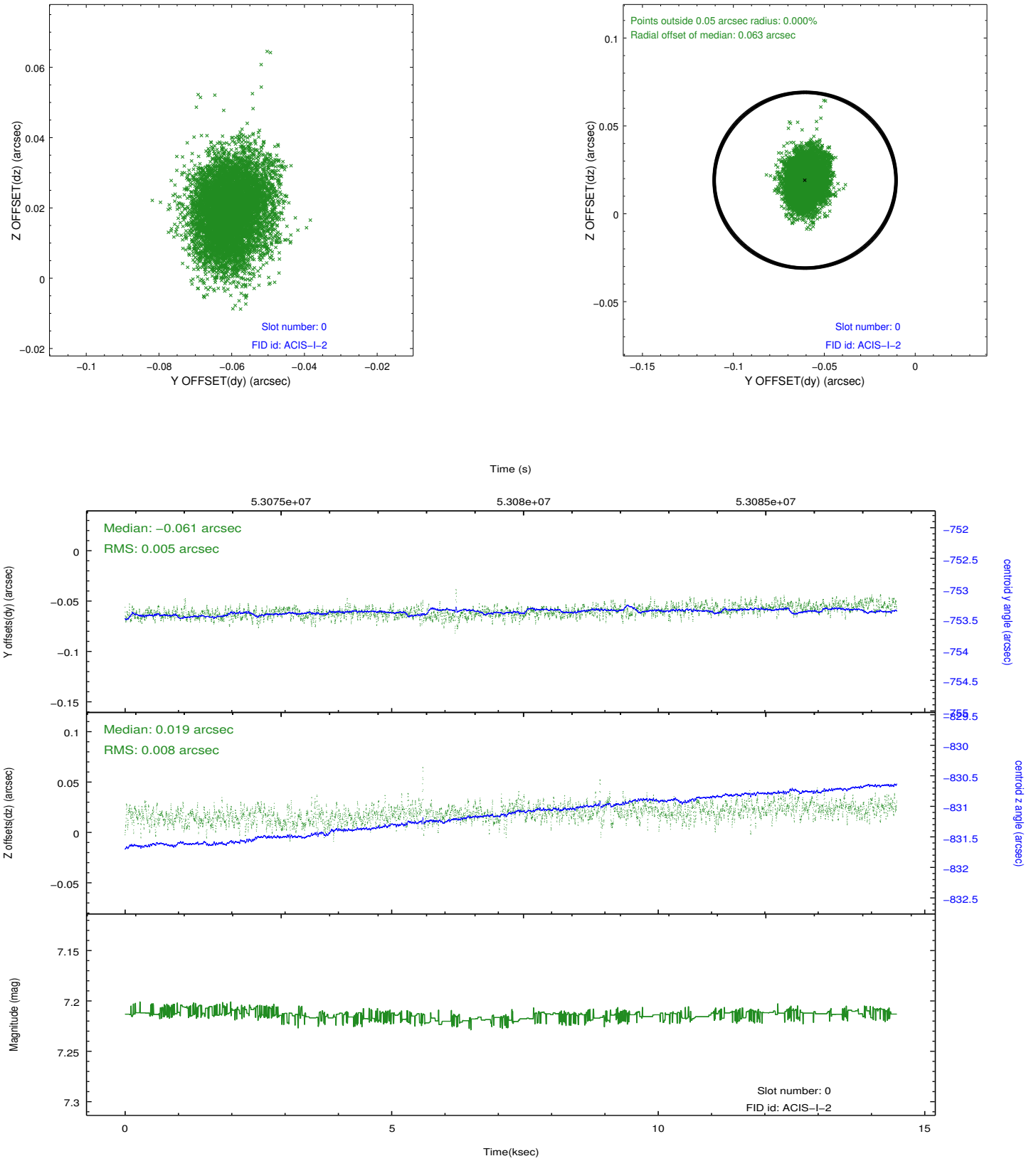


2.4.5 Slot 7

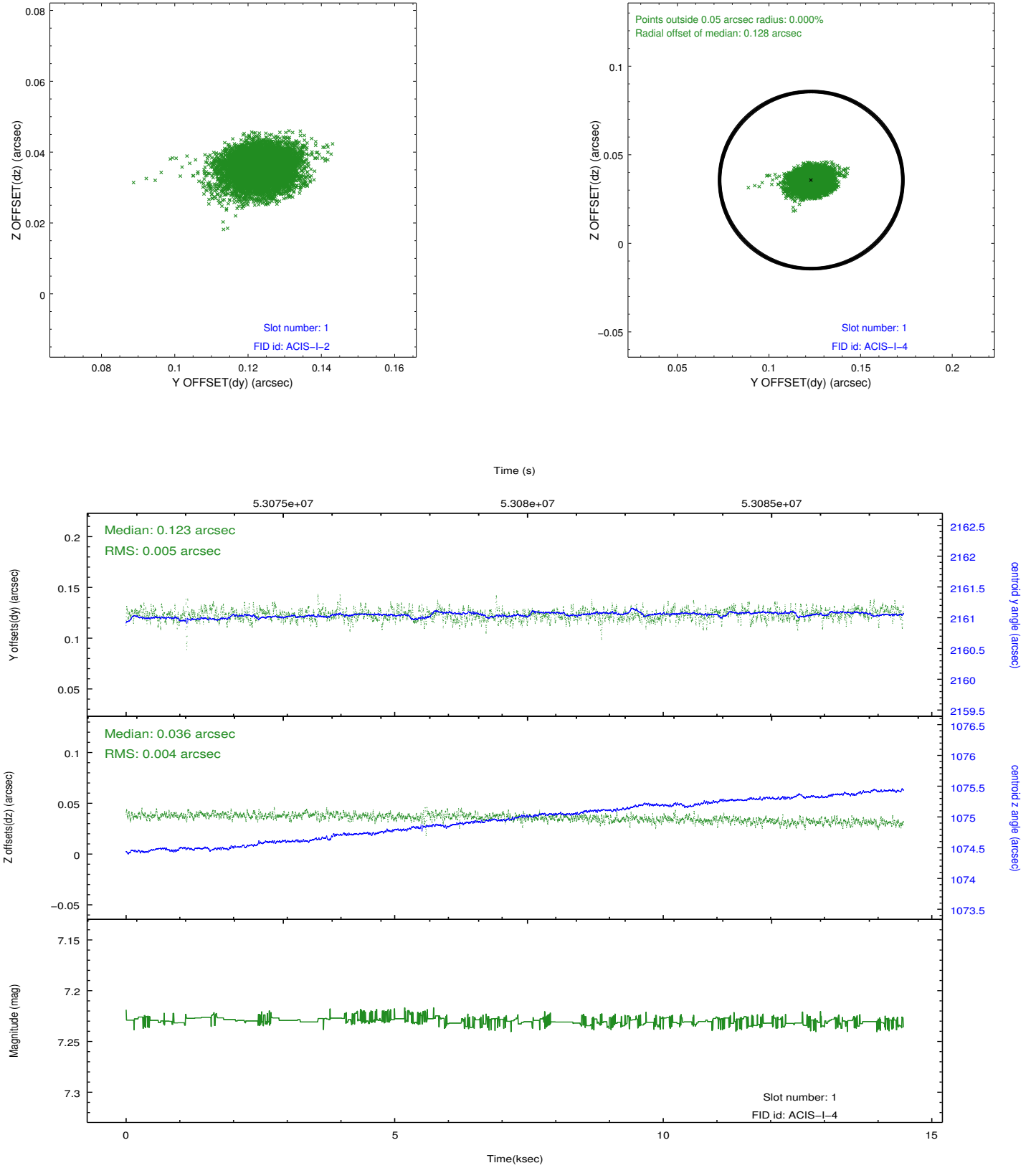


2.5 FID Slots

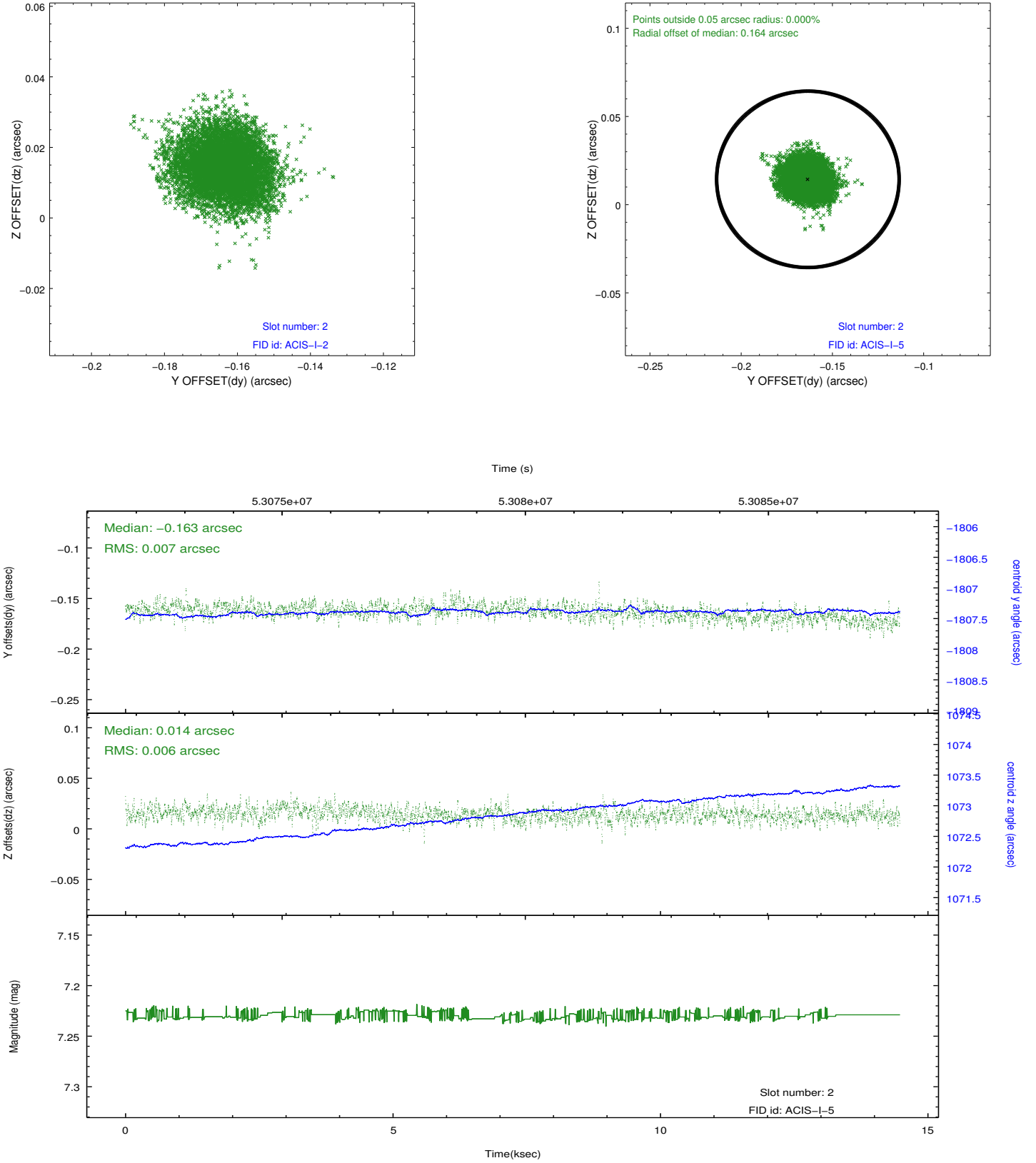
2.5.1 Slot 0



2.5.2 Slot 1



2.5.3 Slot 2



3 Point Sources

A Summary

A.1 Status

V&V Scientist	Joy Nichols
V&V Date (YYYY-MM-DD)	2010.07.29
V&V Edition	1
V&V Disposition and Status	OK
V&V Charge Time	13.761

A.2 Comments

Target is off-axis on I3 chip. PSF measurement. Aim point is not on subarray, but the target is.

===

Charge time for this observation remains at previous value of 13.761 ksec, although with the current processing the charge time would have been 13.860 ksec.

==

The focal plane temperature is approximately -100 C during this observation. This reprocessing of the data applies no CTI correction because none is available for this temperature at present.

The ACIS CTI correction has not been calibrated at this temperature, because it was early in the mission, and ACIS had not yet been lowered to the standard -119.7 C. Both front and back illuminated chips are affected. However a T_GAIN correction has been applied to the BI chips (ACIS-5 and ACIS-7) data included here.

The ACIS spectral response calibration is less accurate at these warmer temperatures than it is at -119.7 C. Users whose science objectives depend on the most accurate spectral response (ie: fitting line-rich spectra) may notice an effect. Users whose science objectives do not depend on the most accurate spectral response should not notice an effect.