

# V&V Reference Report

## L2 ASCDS Version : 8.4.4

Observation 10784 - L2 Version 2  
Chandra X-Ray Center

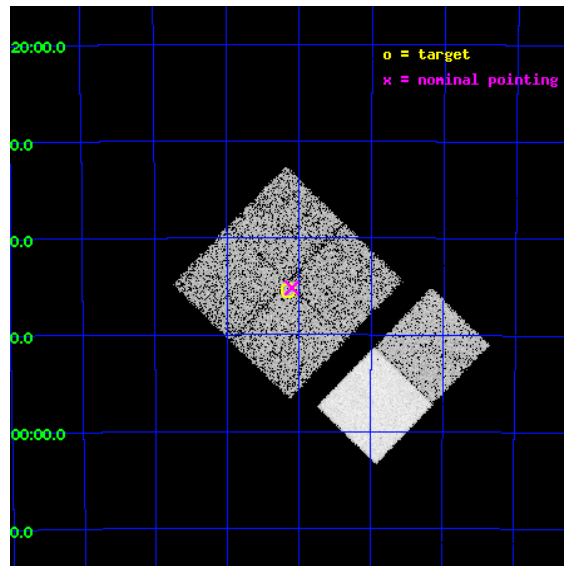
L2 Processing Date : May 22 2012

## Contents

<b>1</b>	<b>Front</b>	<b>2</b>
<b>2</b>	<b>OBI</b>	<b>3</b>
2.1	OBI . . . . .	3
2.1.1	Images . . . . .	3
2.1.2	Bias . . . . .	3
2.1.3	Parameters . . . . .	4
2.1.4	Events . . . . .	4
2.2	Compared Parameters . . . . .	5
2.3	Aspect . . . . .	6
2.4	Star Slots . . . . .	9
2.4.1	Slot 3 . . . . .	9
2.4.2	Slot 4 . . . . .	10
2.4.3	Slot 5 . . . . .	11
2.4.4	Slot 6 . . . . .	12
2.4.5	Slot 7 . . . . .	13
2.5	FID Slots . . . . .	14
2.5.1	Slot 0 . . . . .	14
2.5.2	Slot 1 . . . . .	15
2.5.3	Slot 2 . . . . .	16
<b>A</b>	<b>Summary</b>	<b>17</b>
A.1	Status . . . . .	17
A.2	Comments . . . . .	17

# 1 Front

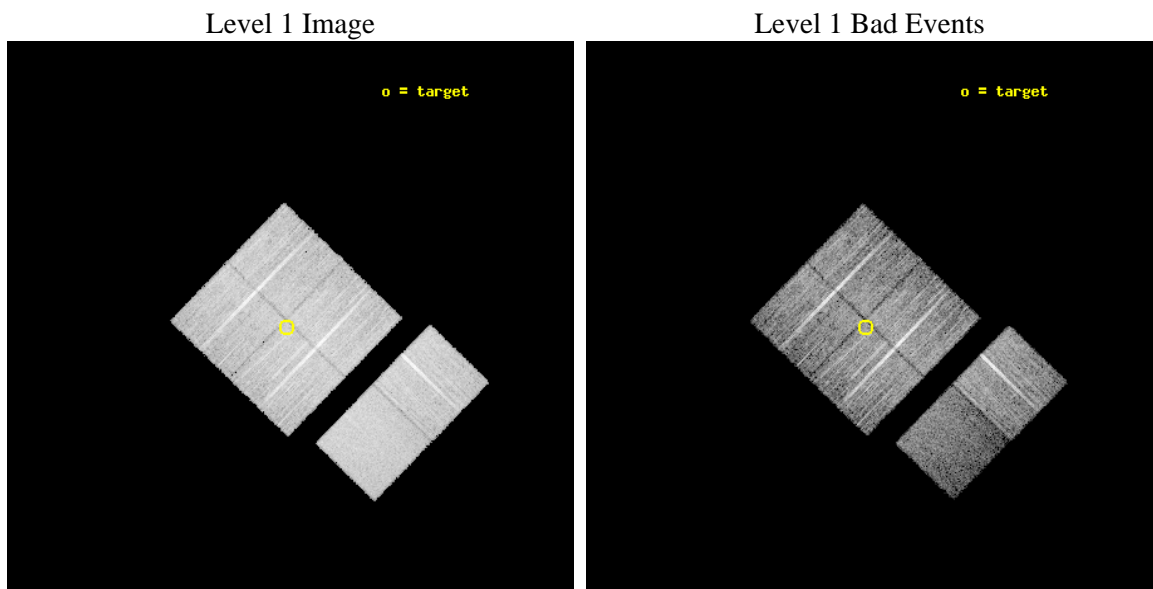
seq_num	900828	Sequence number
obs_id	10784	Observation id
title	The Great Nebula in Carina: Protoplanetary Disks to Starburst Galaxies	Proposal title
observer	Dr. Leisa Townsley	Principal investigator
object	Carina East Ptg 4	Source name
dtcycle	0	&#160
cycle	P	events from which exps? Prim/Second/Both
ra_targ	162.289167	Observer's specified target RA [deg]
dec_targ	-59.756694	Observer's specified target Dec [deg]
ra_nom	162.27502312239	Nominal RA [deg]
dec_nom	-59.752764831718	Nominal Dec [deg]
roll_nom	134.19647471216	Nominal Roll [deg]
revision	2	Processing version of data
ontime	9651.1999641061	Sum of GTIs [s]
livetime	9528.9906589056	Livetime [s]
ontime0	9651.1999641061	Sum of GTIs [s]
ontime1	9651.1999641061	Sum of GTIs [s]
ontime2	9651.1999641061	Sum of GTIs [s]
ontime3	9651.1999641061	Sum of GTIs [s]
ontime6	9651.1999641061	Sum of GTIs [s]
ontime7	9651.1999641061	Sum of GTIs [s]
l2events	74880	Number of level 2 events



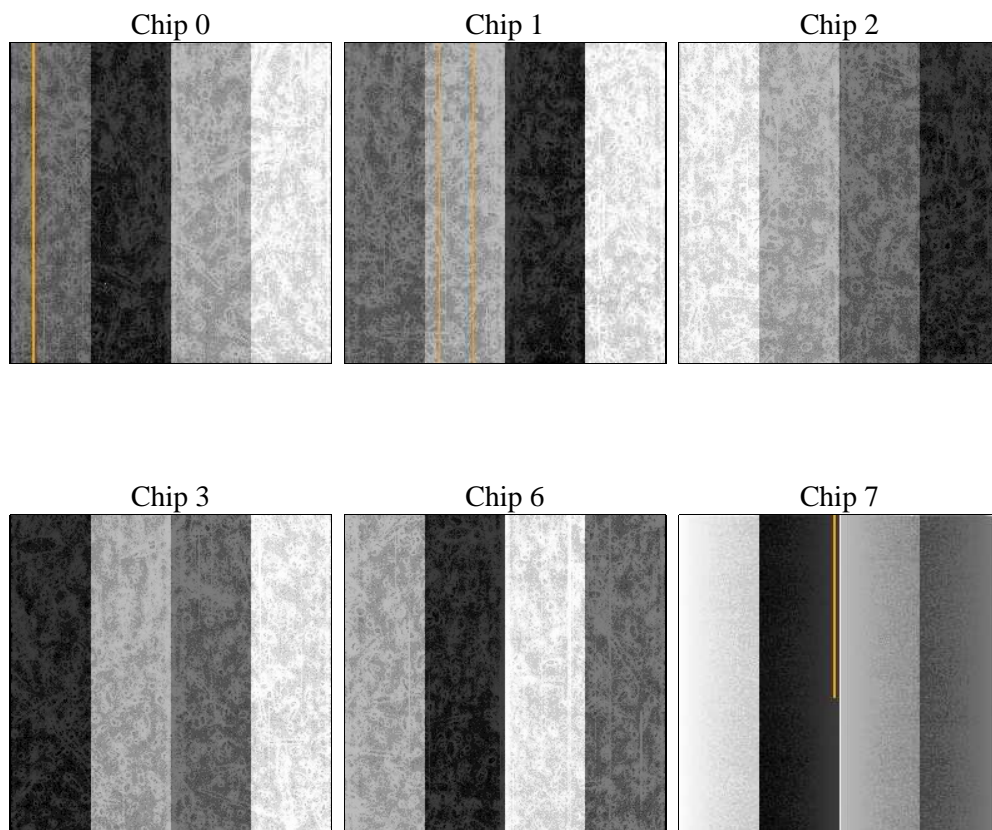
## 2 OBI

### 2.1 OBI

#### 2.1.1 Images



#### 2.1.2 Bias



### 2.1.3 Parameters

obi_num	0	Obi number	sched_exp_time	9608.272000	[s] Scheduled observation exposure time
ascdsver	8.4.4	Processing system revision	ontime	9651.1999641061	Sum of GTIs [s]
caldsver	4.4.9	&#160	ontime0	9651.1999641061	Sum of GTIs [s]
date	2012-05-22T22:00:50	Date and time of file creation	ontime1	9651.1999641061	Sum of GTIs [s]
revision	2	Processing version of data	ontime2	9651.1999641061	Sum of GTIs [s]
			ontime3	9651.1999641061	Sum of GTIs [s]
			ontime6	9651.1999641061	Sum of GTIs [s]
			ontime7	9651.1999641061	Sum of GTIs [s]
			l1events	442781	Number of level 1 events

### 2.1.4 Events

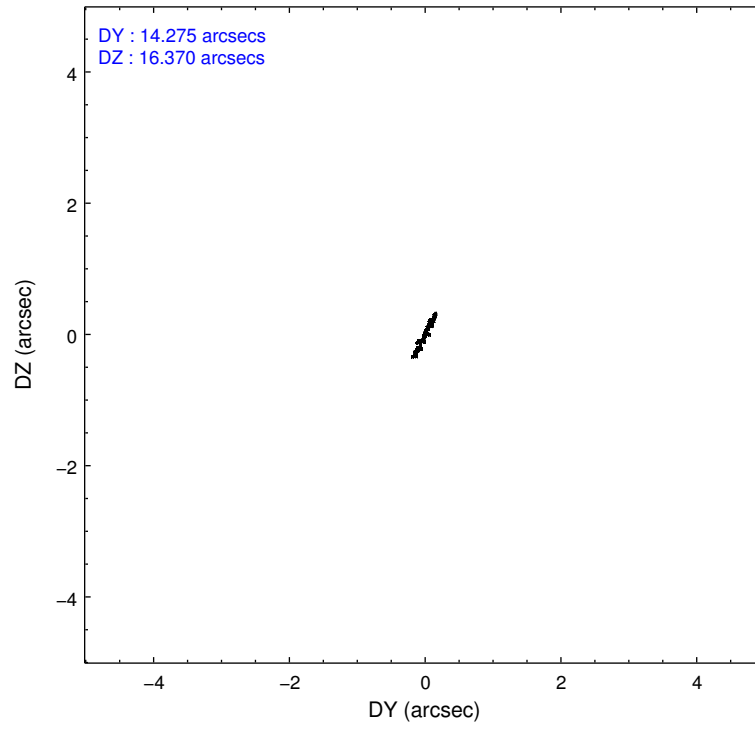
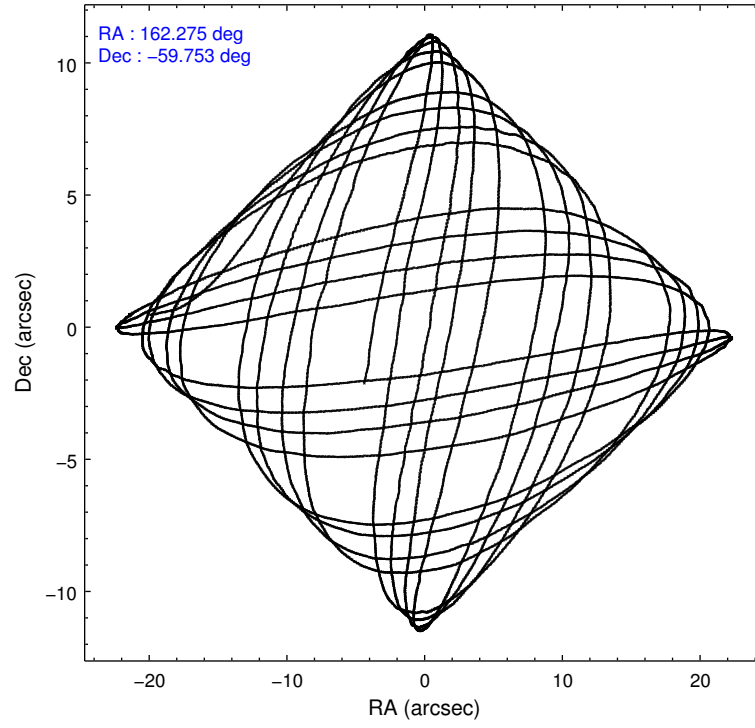
	ccd 0	ccd 1	ccd 2	ccd 3	ccd 6	ccd 7		ccd 0	ccd 1	ccd 2	ccd 3	ccd 6	ccd 7
level 1 events	68566	66904	78053	74700	77824	76734	grade 0 events	3246	3007	3774	3144	5369	5271
rejected events	60435	58823	69663	67121	67156	36591		4%	4%	4%	4%	6%	6%
rejected %	88%	87%	89%	89%	86%	47%	grade 1 events	39	35	68	54	36	127
								0%	0%	0%	0%	0%	0%
							grade 2 events	1890	1756	1744	1497	1987	8701
								2%	2%	2%	2%	2%	11%
							grade 3 events	839	880	801	751	879	3928
								1%	1%	1%	1%	1%	5%
							grade 4 events	806	848	769	827	859	3850
								1%	1%	0%	1%	1%	5%
							grade 5 events	2182	2571	1938	2521	2581	7713
								3%	3%	2%	3%	3%	10%
							grade 6 events	1355	1597	1311	1366	1580	18413
								1%	2%	1%	1%	2%	23%
							grade 7 events	58209	56210	67648	64540	64533	28731
								84%	84%	86%	86%	82%	37%

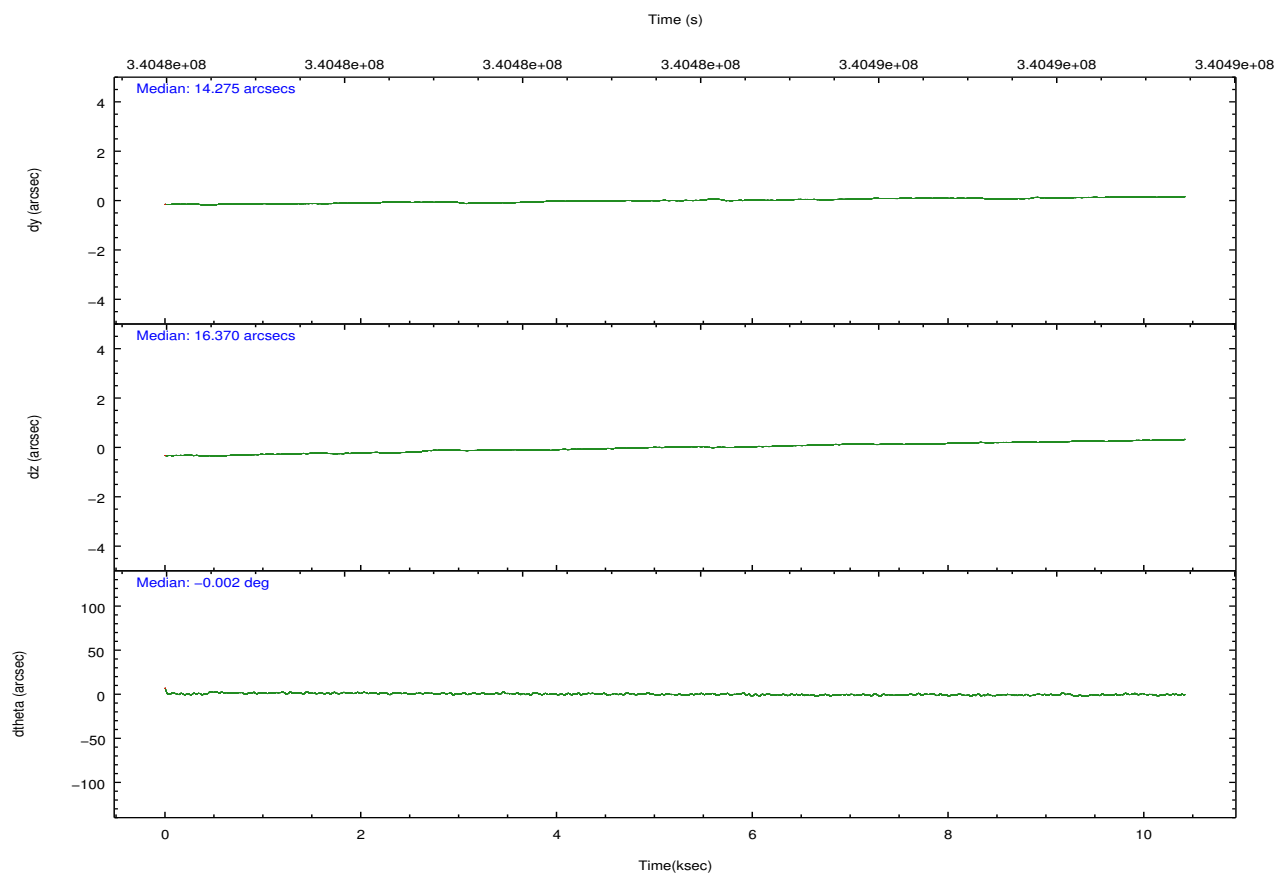
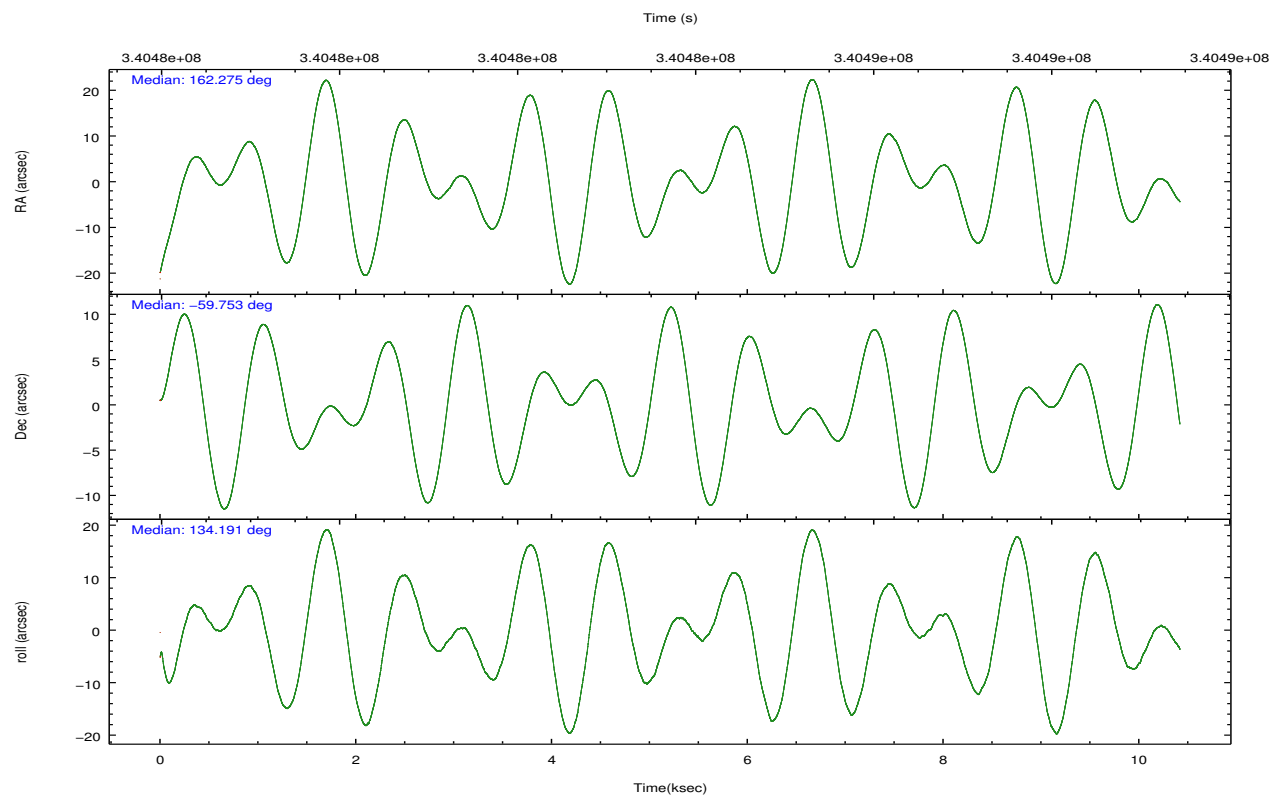


## 2.2 Compared Parameters

Parameter	Planned	Actual	Parameter	Planned	Actual
Instrument	ACIS	ACIS	Obspar format version number	7	7
Detector	ACIS-012367	ACIS-012367	Obspar file type	PREDICTED	ACTUAL
Grating	NONE	NONE	Obspar update status	NONE	UPDATED
Data mode	VFAINT	VFAINT	CCD I0 on	Y	Y
Observation mode	POINTING	POINTING	CCD I1 on	Y	Y
[deg] Pointing RA	162.327670	162.2750231223853	CCD I2 on	Y	Y
[deg] Pointing Dec	-59.760210	-59.7527648317177	CCD I3 on	Y	Y
[deg] Pointing Roll	134.033259	134.1964747121557	CCD S0 on	N	N
[mm] SIM focus pos	-0.782348	-0.7809083437167272	CCD S1 on	N	N
[mm] SIM defocus	0	0.001439871863259334	CCD S2 on	O1	Y
[mm] SIM translation stage pos	-233.592463	-233.5874344608287	CCD S3 on	O2	Y
[mm] SIM translation stage offset	0	-0.005018542100998502	CCD S4 on	N	N
[s] Observation start time (MET)	340479308.184000	340477990.86799	CCD S5 on	N	N
Observation start date	2008-10-15T17:34:03	2008-10-15T17:13:10	Number of optional ACIS chips dropped	0	0
[s] Observation end time (MET)	340488916.184000	340489121.85604	On-chip summing requested	N	N
Observation end date	2008-10-15T20:14:11	2008-10-15T20:18:41	Subarray requested	NONE	NONE
Read mode	TIMED	TIMED	Alternating exposures requested	N	N
			[s] Primary exposure time	0.000000	3.2

## 2.3 Aspect



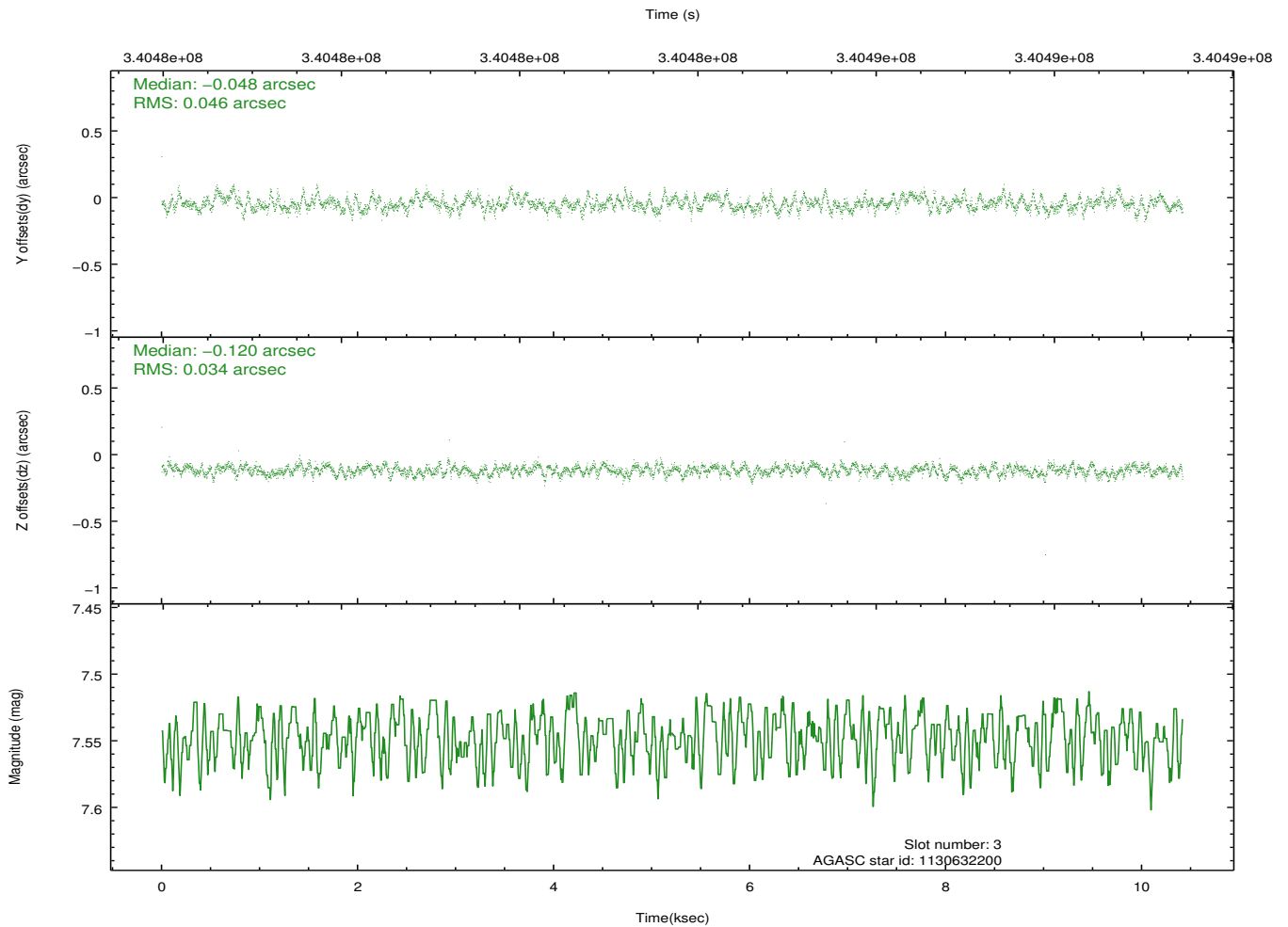
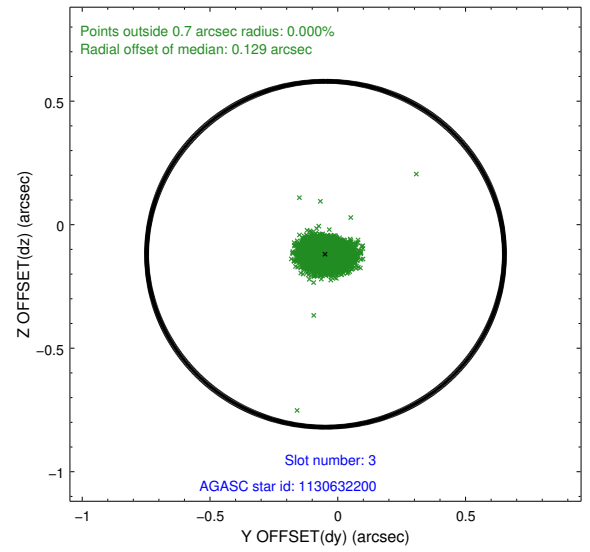
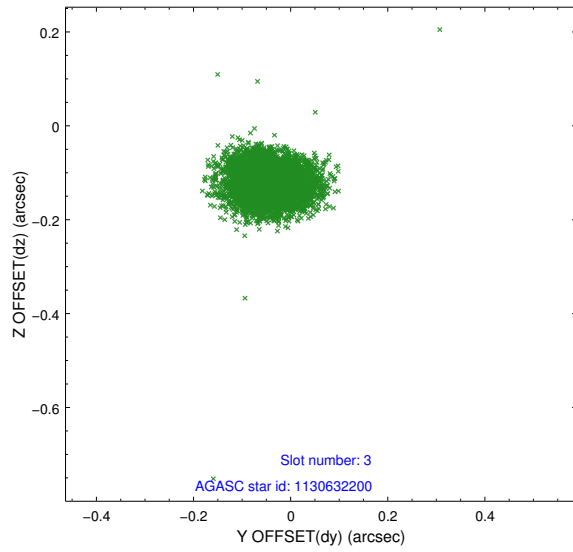


### Slot Statistics

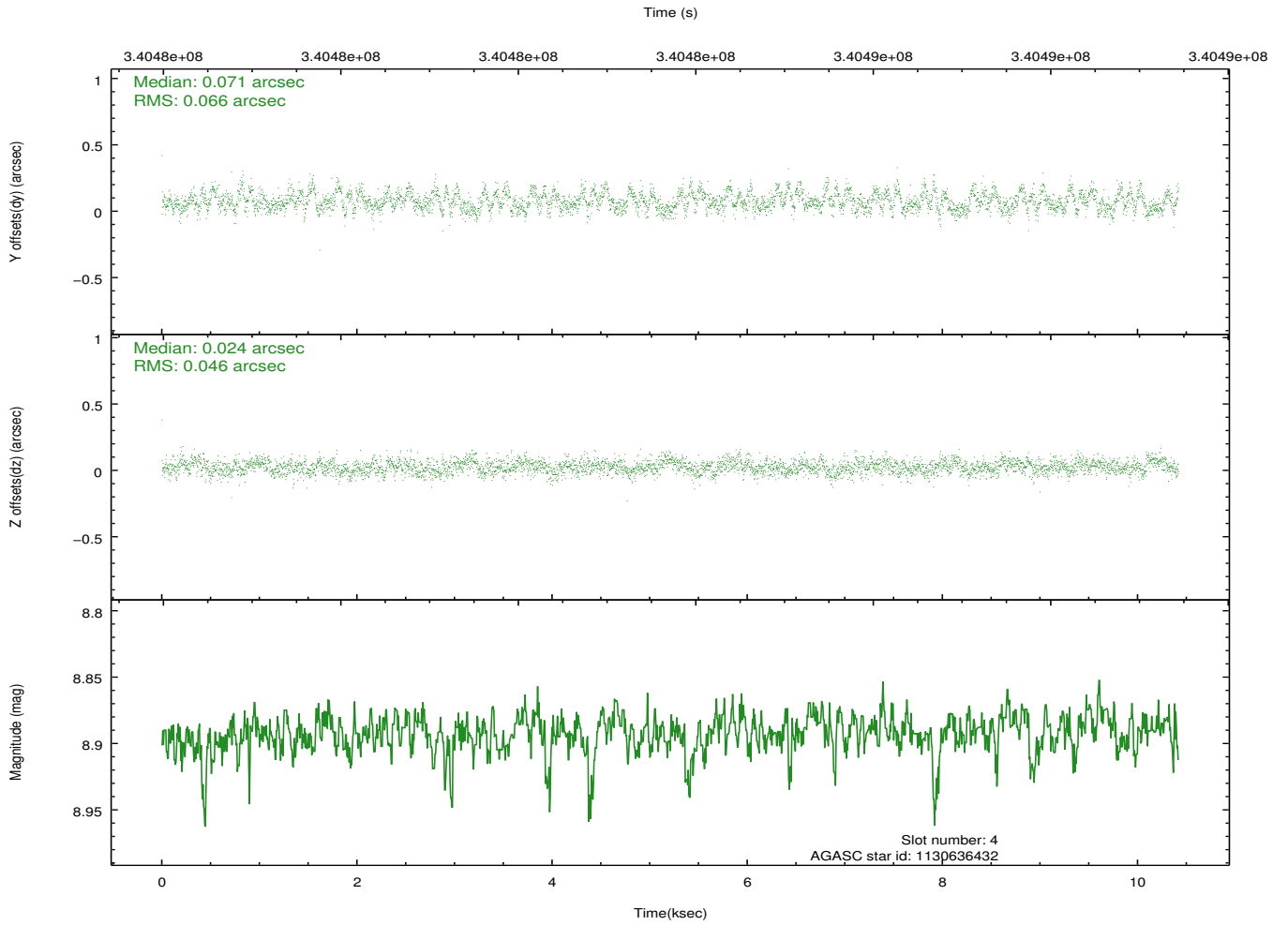
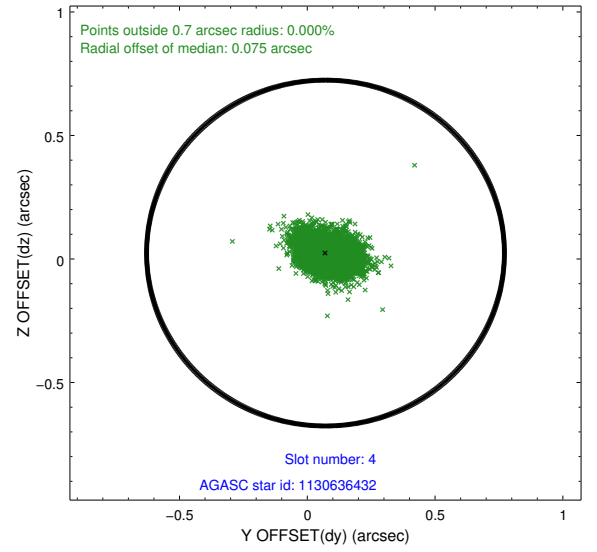
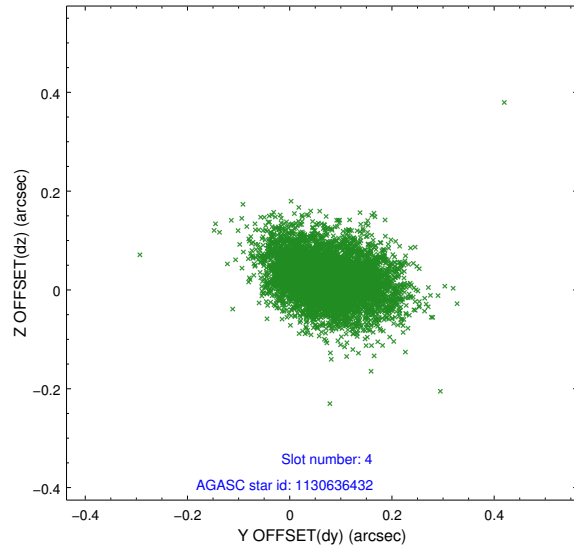
slot	status	id	mag	n_pts	med_dy	med_dz	dr1	dr2	ra	dec	mean_y	mean_z
0	FID	ACIS-I-1	7.00	2542	-0.092	-0.065	0.009	0.016	0.000000	0.000000	925.12	-840.05
1	FID	ACIS-I-4	6.92	2542	0.019	0.119	0.011	0.018	0.000000	0.000000	2145.54	1059.69
2	FID	ACIS-I-6	7.00	2542	-0.023	0.012	0.011	0.018	0.000000	0.000000	391.73	1702.33
3	GUIDE	1130632200	7.55	5083	-0.048	-0.120	0.059	0.096	161.433843	-59.407820	2042.29	303.52
4	GUIDE	1130636432	8.89	5071	0.071	0.024	0.085	0.138	162.263589	-58.895452	2321.69	-2077.67
5	GUIDE	1130642000	7.99	5083	0.030	0.052	0.067	0.105	162.836255	-59.743891	-600.97	-701.76
6	GUIDE	1174033752	8.46	5083	0.010	0.037	0.056	0.092	162.418977	-60.164599	-1160.56	894.46
7	GUIDE	1174020728	8.15	5082	-0.070	0.006	0.067	0.109	162.364714	-60.294672	-1429.65	1290.20

## 2.4 Star Slots

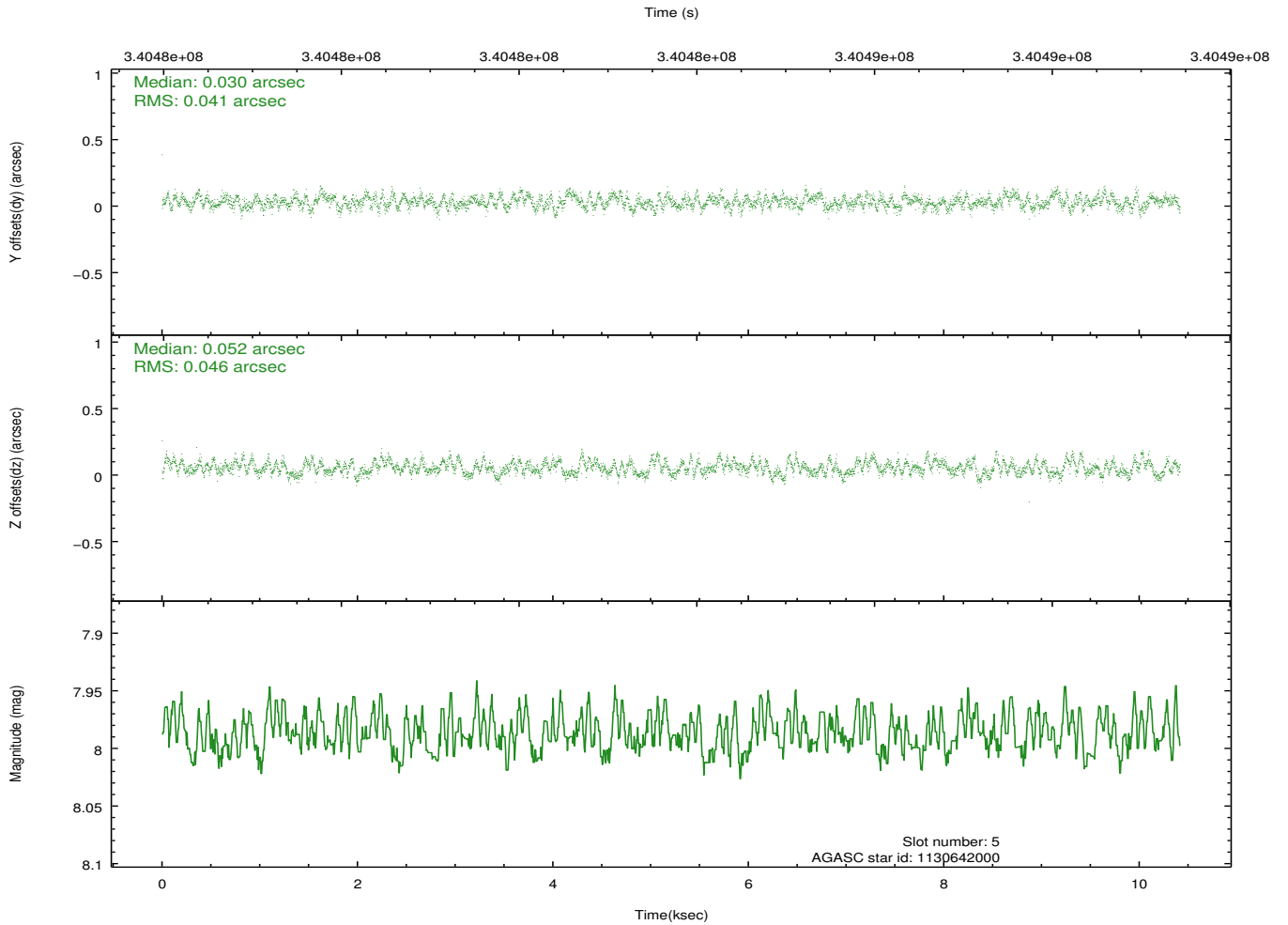
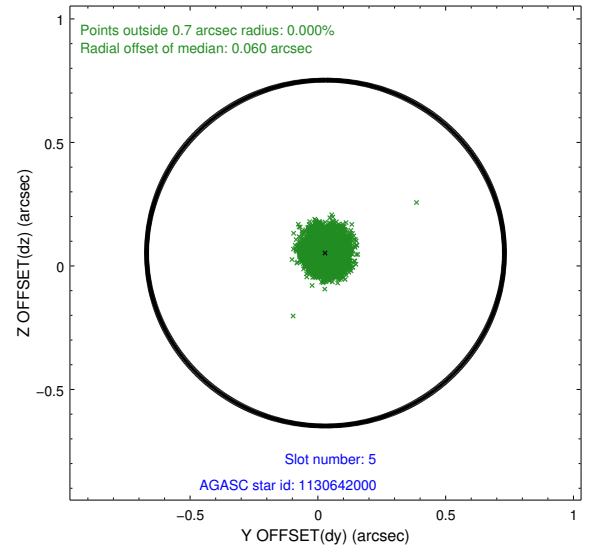
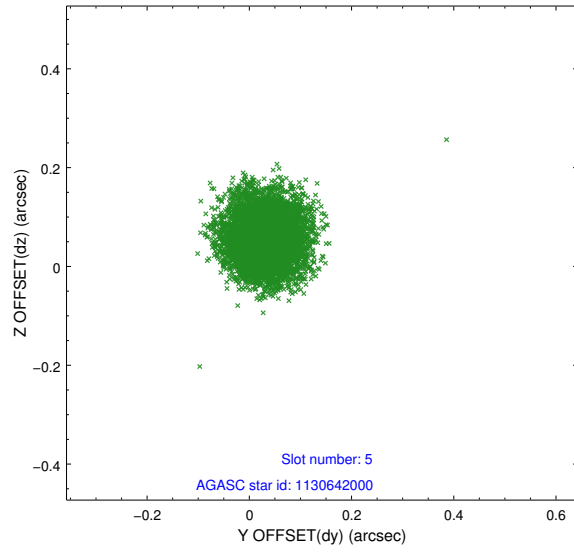
### 2.4.1 Slot 3



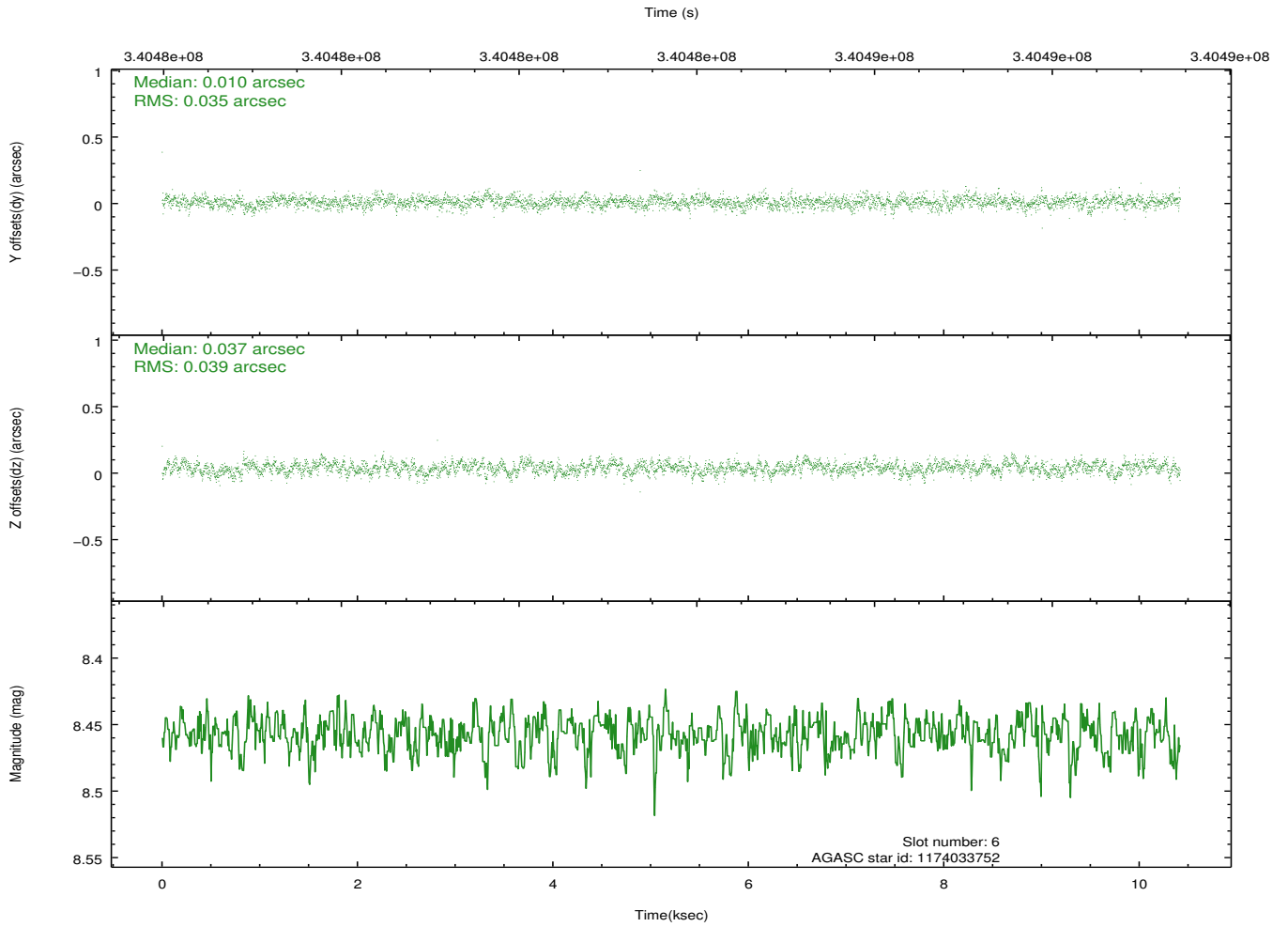
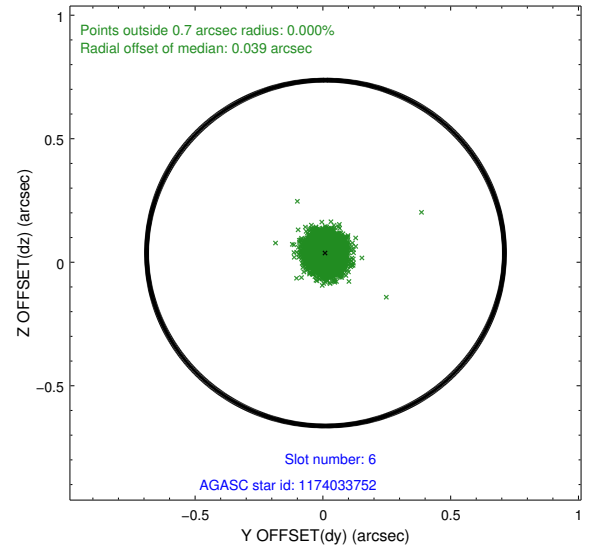
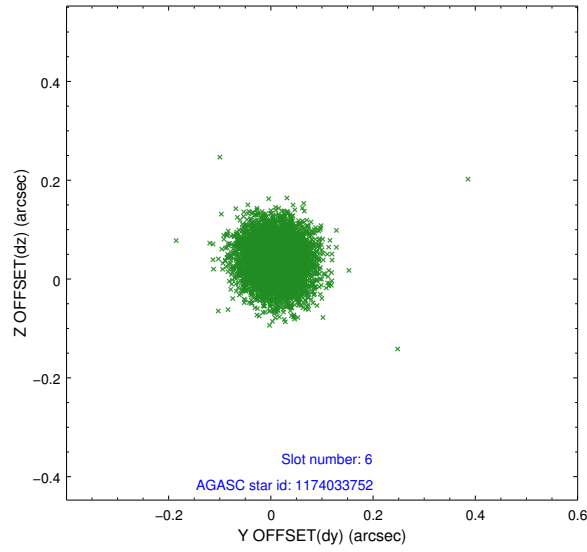
## 2.4.2 Slot 4



### 2.4.3 Slot 5

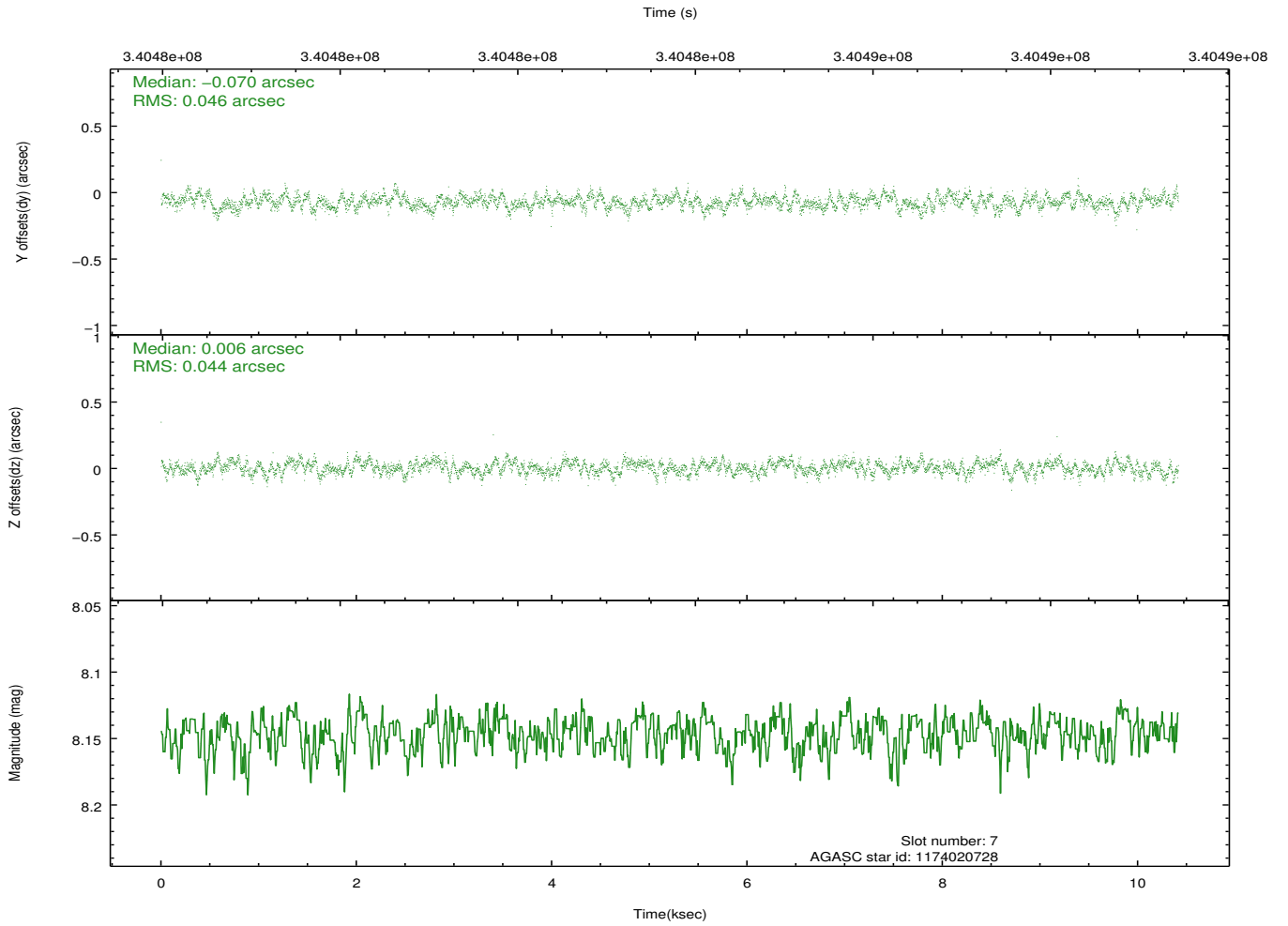
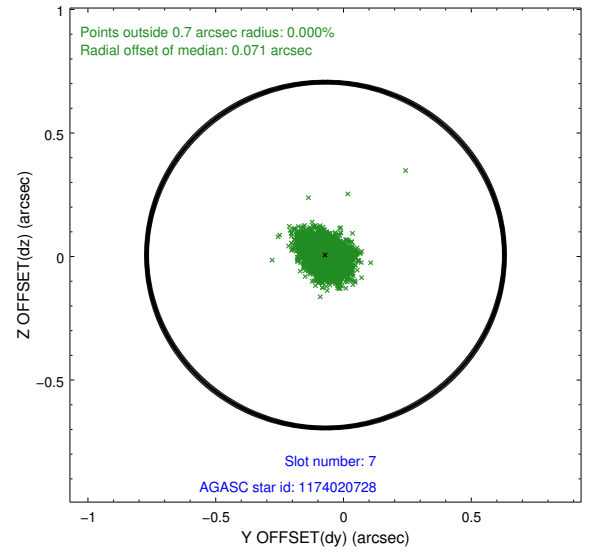
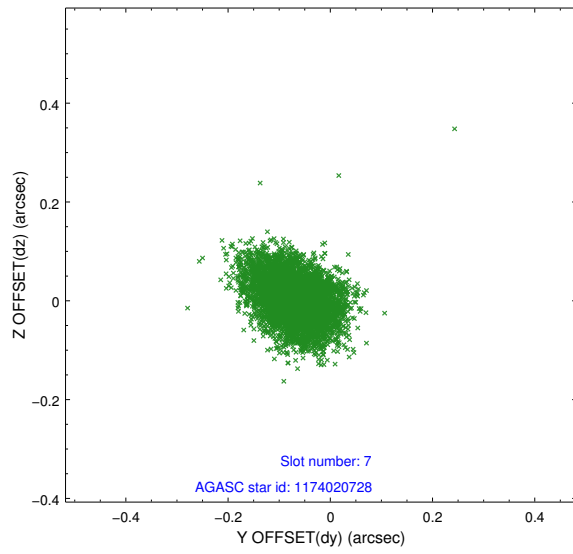


## 2.4.4 Slot 6



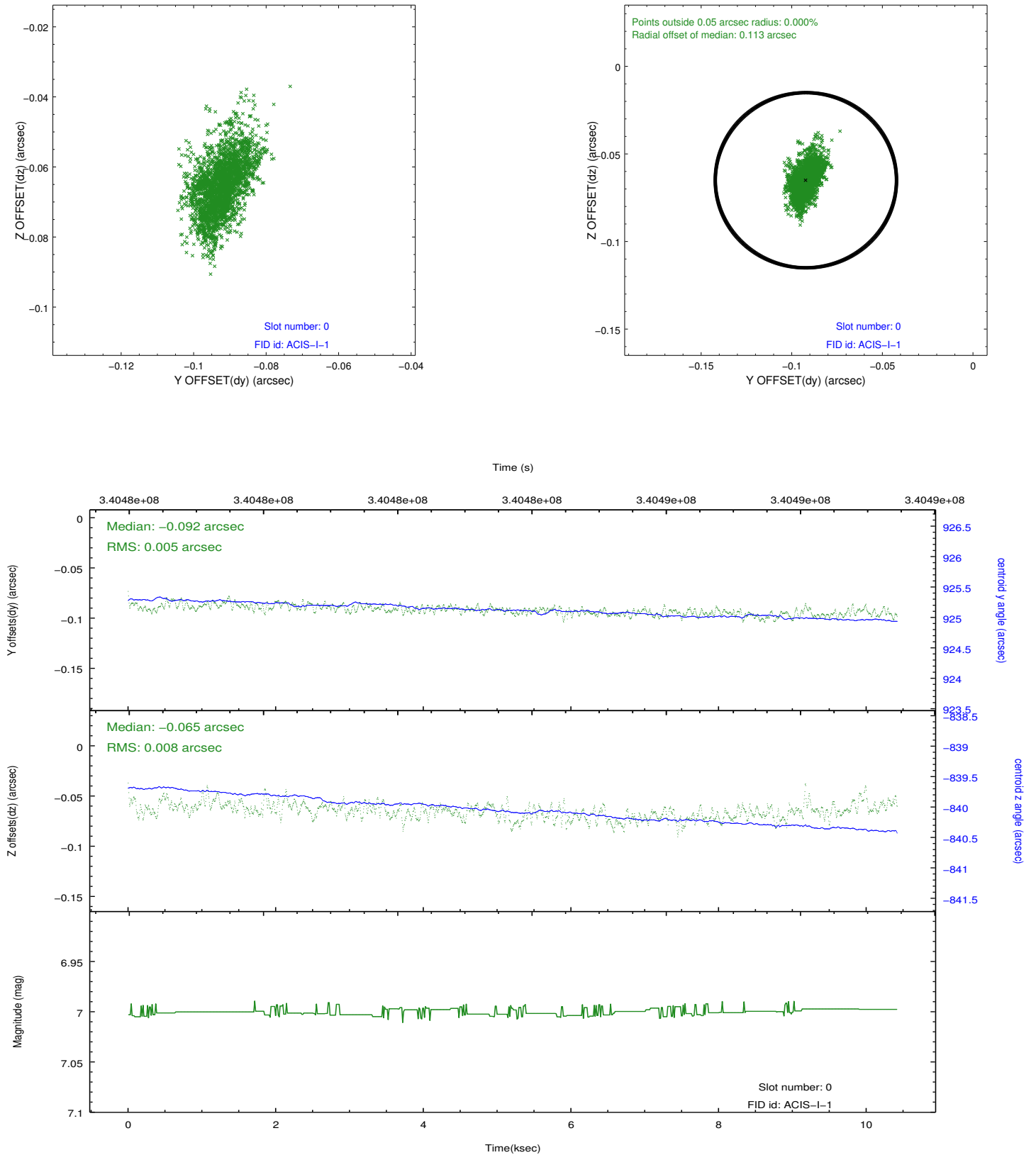


## 2.4.5 Slot 7

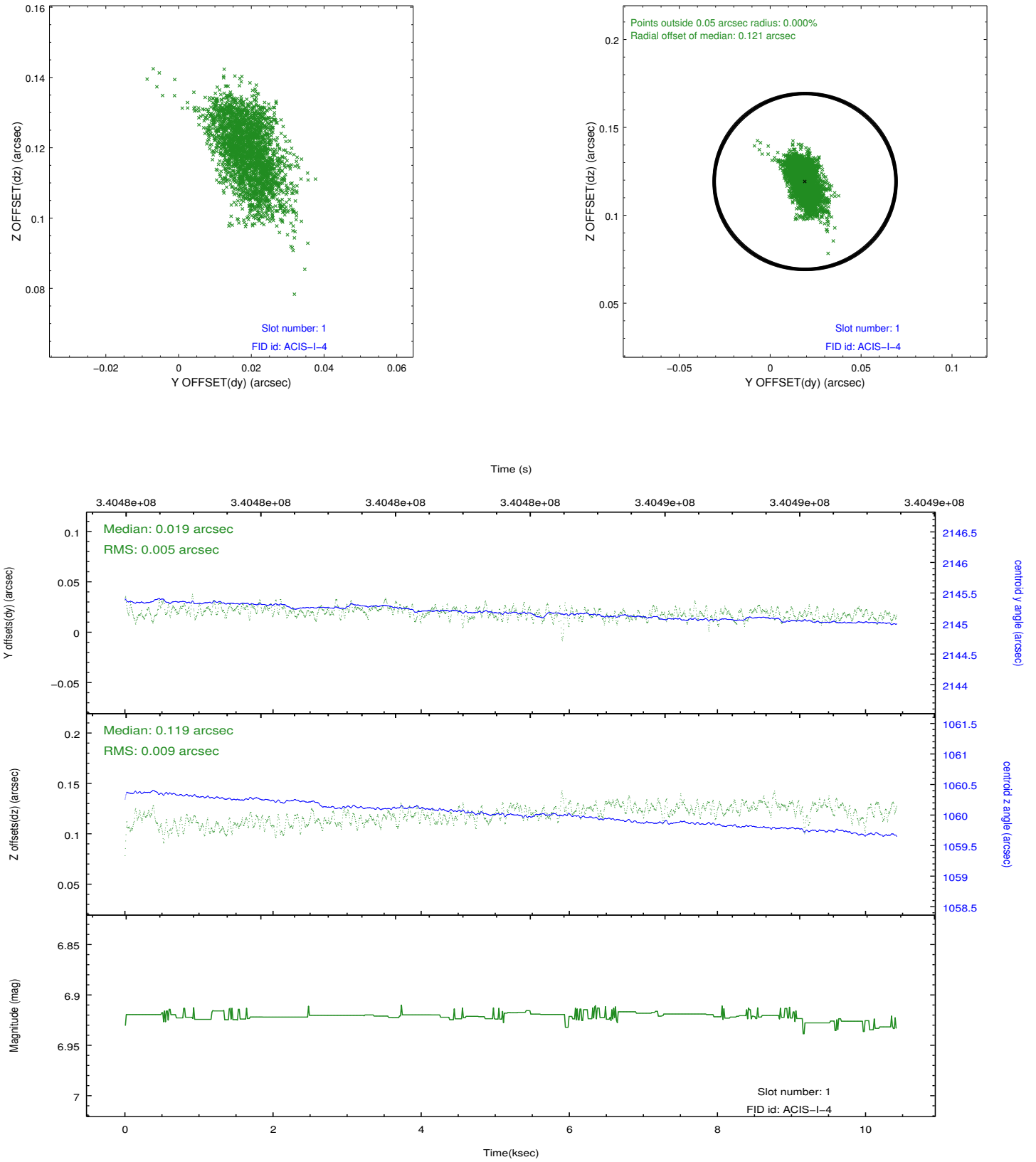


## 2.5 FID Slots

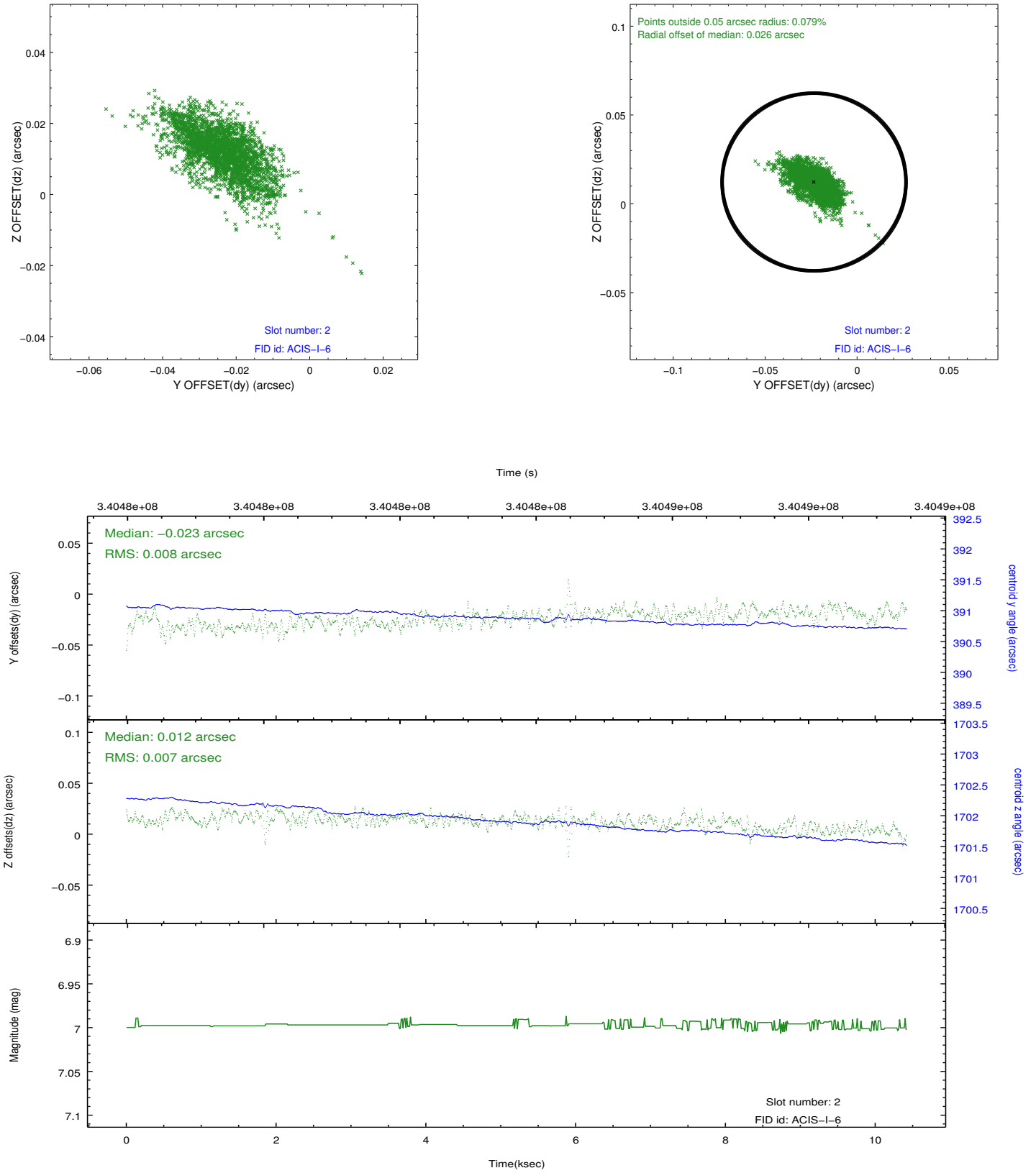
### 2.5.1 Slot 0



## 2.5.2 Slot 1



### 2.5.3 Slot 2



## A Summary

### A.1 Status

V&V Scientist	Jen Lauer
V&V Date (YYYY-MM-DD)	2012.05.30
V&V Edition	1
V&V Disposition and Status	OK
V&V Charge Time	9.65119996

### A.2 Comments