

V&V Reference Report

L2 ASCDS Version : 7.6.10

Observation 923 - L2 Version 001
Chandra X-Ray Center

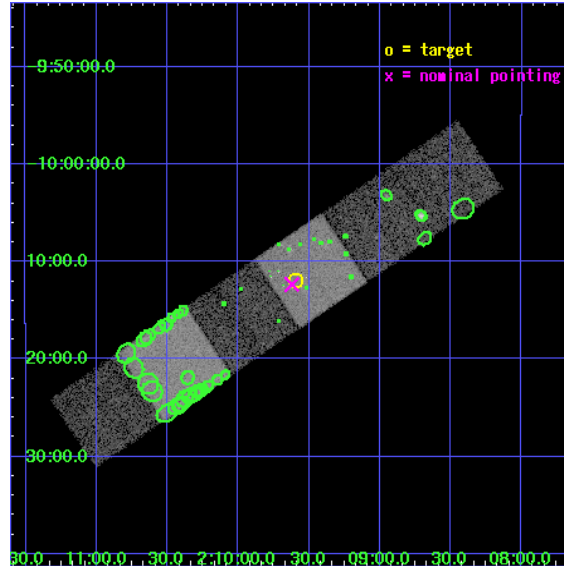
L2 Processing Date : Jun 16 2007

Contents

1	Front	2
2	OBI	3
2.1	OBI	3
2.1.1	Images	3
2.1.2	Bias	3
2.1.3	Parameters	4
2.1.4	Events	4
2.2	Compared Parameters	5
2.3	Aspect	6
2.4	Star Slots	9
2.4.1	Slot 3	9
2.4.2	Slot 4	10
2.4.3	Slot 5	11
2.4.4	Slot 6	12
2.4.5	Slot 7	13
2.5	FID Slots	14
2.5.1	Slot 0	14
2.5.2	Slot 1	15
2.5.3	Slot 2	16
3	Point Sources	17
A	Summary	18
A.1	Status	18
A.2	Comments	18

1 Front

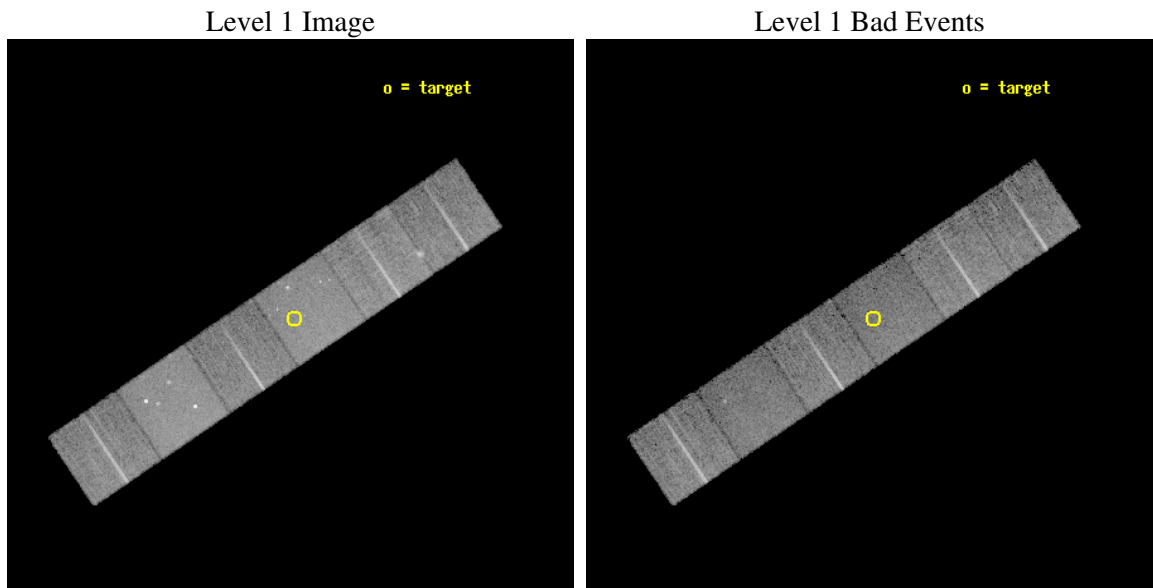
seq_num	800099
obs_id	923
title	X-RAY DIAGNOSTICS OF VIRIALIZED GALAXY SYSTEMS AND THE NATURE OF COMPACT GALAXY GROUPS
observer	Dr. Gary Mamon
object	HCG 16
dtcycle	0
cycle	P
ra_targ	32.398
dec_targ	-10.199
ra_nom	32.405130954064
dec_nom	-10.205879075117
roll_nom	325.9787673165
revision	2
ontime	12726.400011852
livetime	12565.250671984
ontime4	12726.400011852
ontime5	12726.400011852
ontime6	12726.400011852
ontime7	12726.400011852
ontime8	12726.400011852
ontime9	12726.400011852
l2events	120122



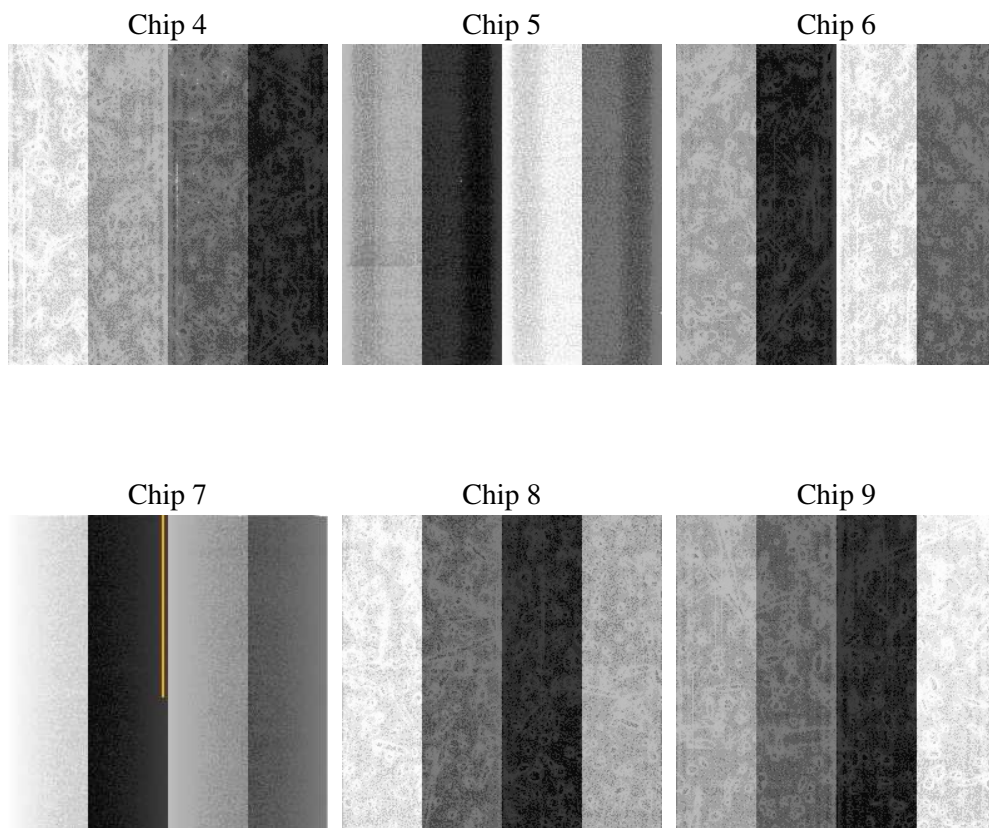
2 OBI

2.1 OBI

2.1.1 Images



2.1.2 Bias



2.1.3 Parameters

obi_num	0
ascdsver	7.6.10
caldsver	3.4.0
date	2007-06-16T14:45:37
revision	2

sched_exp_time	12775.000000
ontime	12726.400011852
ontime4	12726.400011852
ontime5	12726.400011852
ontime6	12726.400011852
ontime7	12726.400011852
ontime8	12726.400011852
ontime9	12726.400011852
l1events	532811

2.1.4 Events

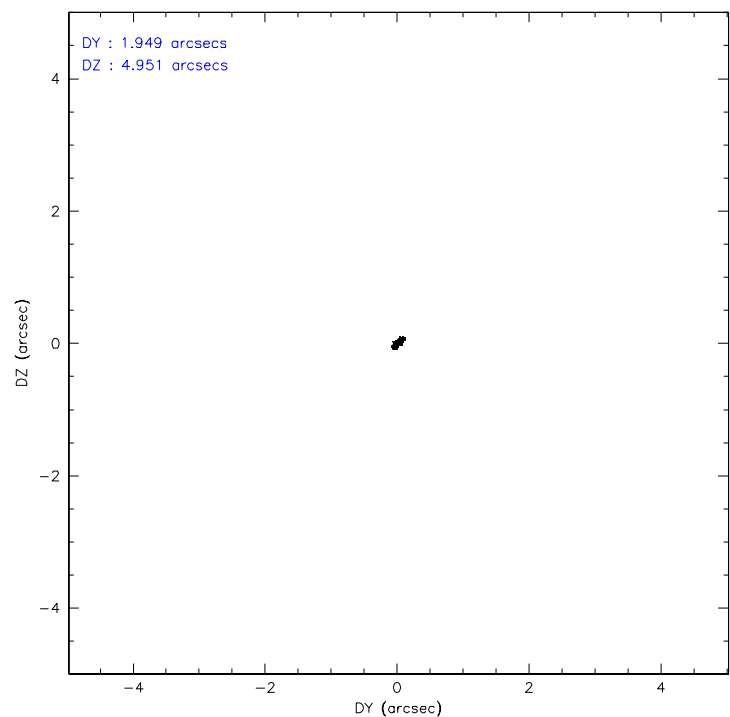
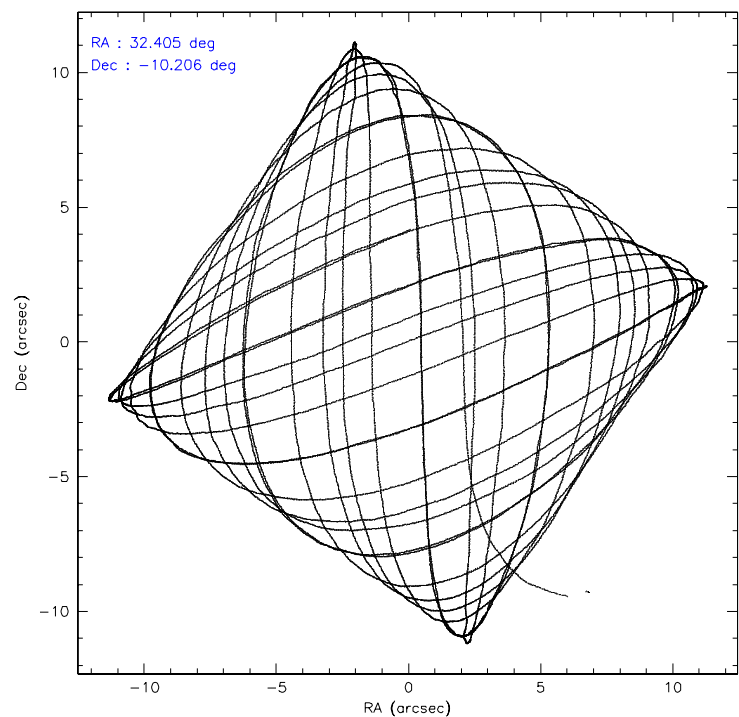
	ccd 4	ccd 5	ccd 6	ccd 7	ccd 8	ccd 9
level 1 events	82140	107221	75324	97081	97131	73914
rejected events	72887	56039	66119	55209	76731	64432
rejected %	88%	52%	87%	56%	78%	87%

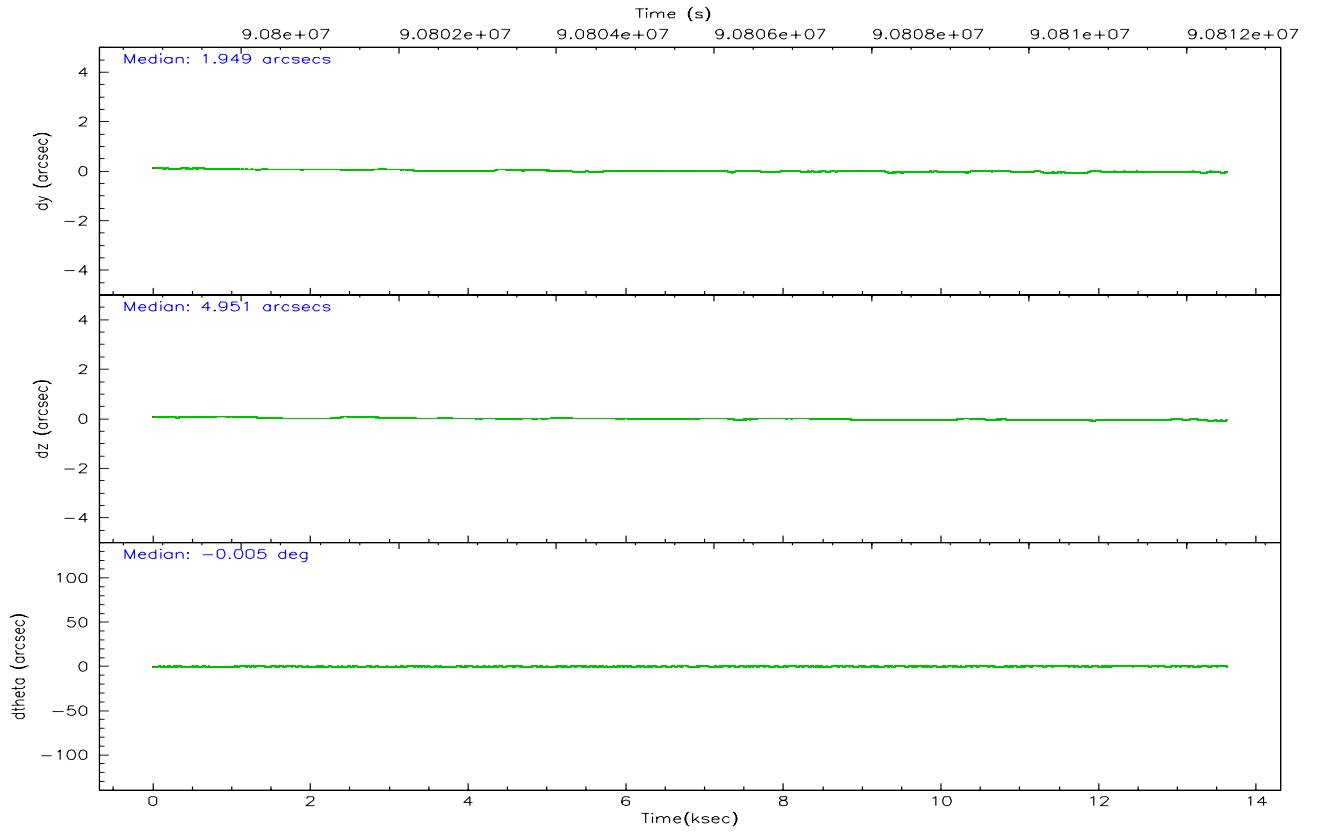
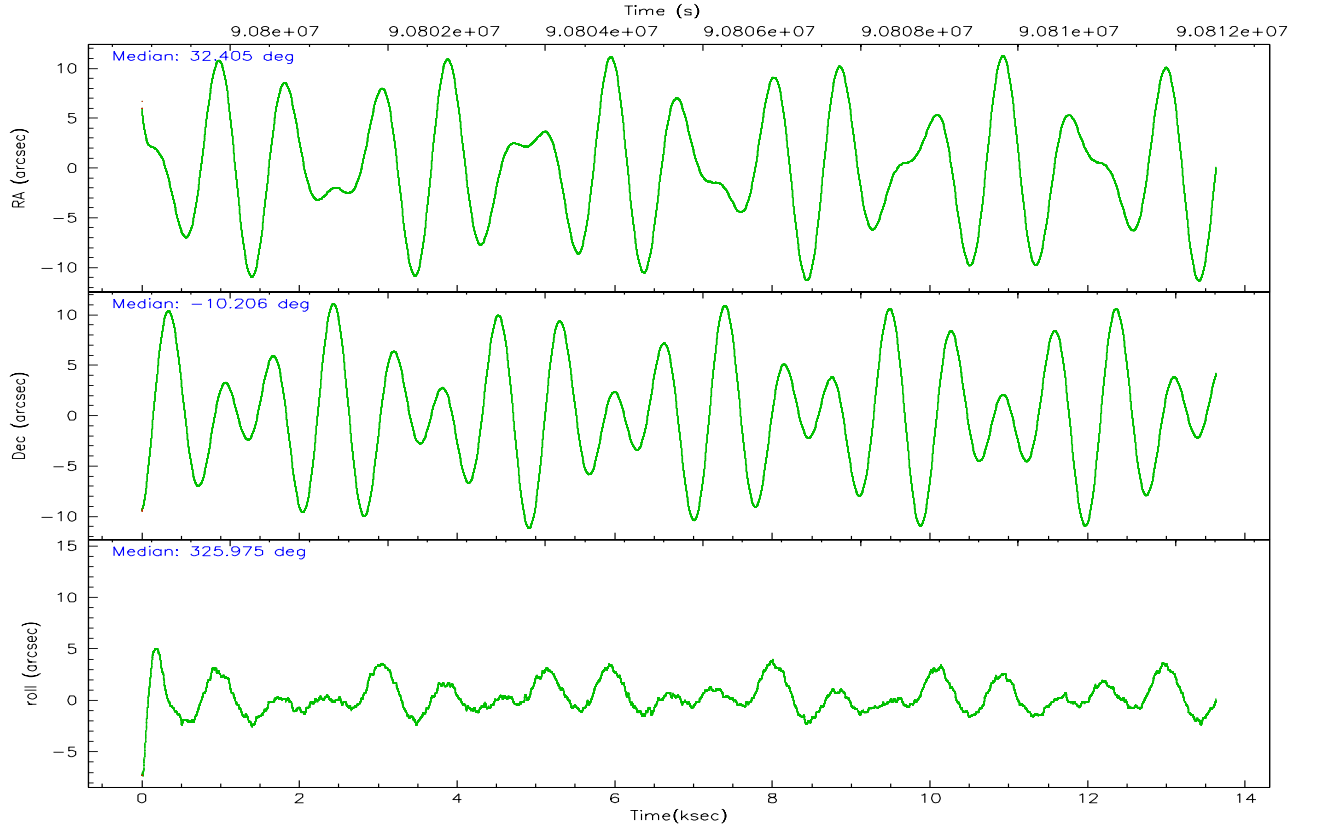
	ccd 4	ccd 5	ccd 6	ccd 7	ccd 8	ccd 9
grade 0 events	3896	7978	3986	4604	7180	4074
	4%	7%	5%	4%	7%	5%
grade 1 events	31	342	45	94	57	37
	0%	0%	0%	0%	0%	0%
grade 2 events	2043	14022	1865	8213	4121	1863
	2%	13%	2%	8%	4%	2%
grade 3 events	940	2125	841	3815	2114	878
	1%	1%	1%	3%	2%	1%
grade 4 events	824	2128	836	3858	1911	880
	1%	1%	1%	3%	1%	1%
grade 5 events	2640	7902	3166	9053	3947	3177
	3%	7%	4%	9%	4%	4%
grade 6 events	1555	24966	1682	21409	5085	1789
	1%	23%	2%	22%	5%	2%
grade 7 events	70211	47758	62903	46035	72716	61216
	85%	44%	83%	47%	74%	82%

2.2 Compared Parameters

Parameter	Planned	Actual	Parameter	Planned	Actual
Instrument	ACIS	ACIS	Obspar format version number	6	6
Detector	ACIS-456789	ACIS-456789	Obspar file type	PREDICTED	ACTUAL
Grating	NONE	NONE	Obspar update status	NONE	UPDATED
Data mode	FAINT	FAINT	Number of optional ACIS chips dropped	0	0
Observation mode	POINTING	POINTING	On-chip summing requested	N	N
Pointing RA	32.377430	32.40513095406444	Subarray requested	NONE	NONE
Pointing Dec	-10.204191	-10.20587907511699	Alternating exposures requested	N	N
Pointing Roll	325.817228	325.9787673165016	Primary exposure time	3.200000	3.2
SIM focus pos (mm)	-0.684267	-0.6828225247311905			
SIM defocus (mm)	0	0.001444936568705701			
SIM translation stage pos (mm)	-190.132523	-190.1425803651734			
SIM translation stage offset (mm)	0	0.01005778216563158			
Observation start time	90799736.184000	90798446.814851			
Observation start date	2000-11-16T22:07:52	2000-11-16T21:47:26			
Observation end time	90812511.184000	90813489.202925			
Observation end date	2000-11-17T01:40:47	2000-11-17T01:58:09			
Read mode	TIMED	TIMED			

2.3 Aspect



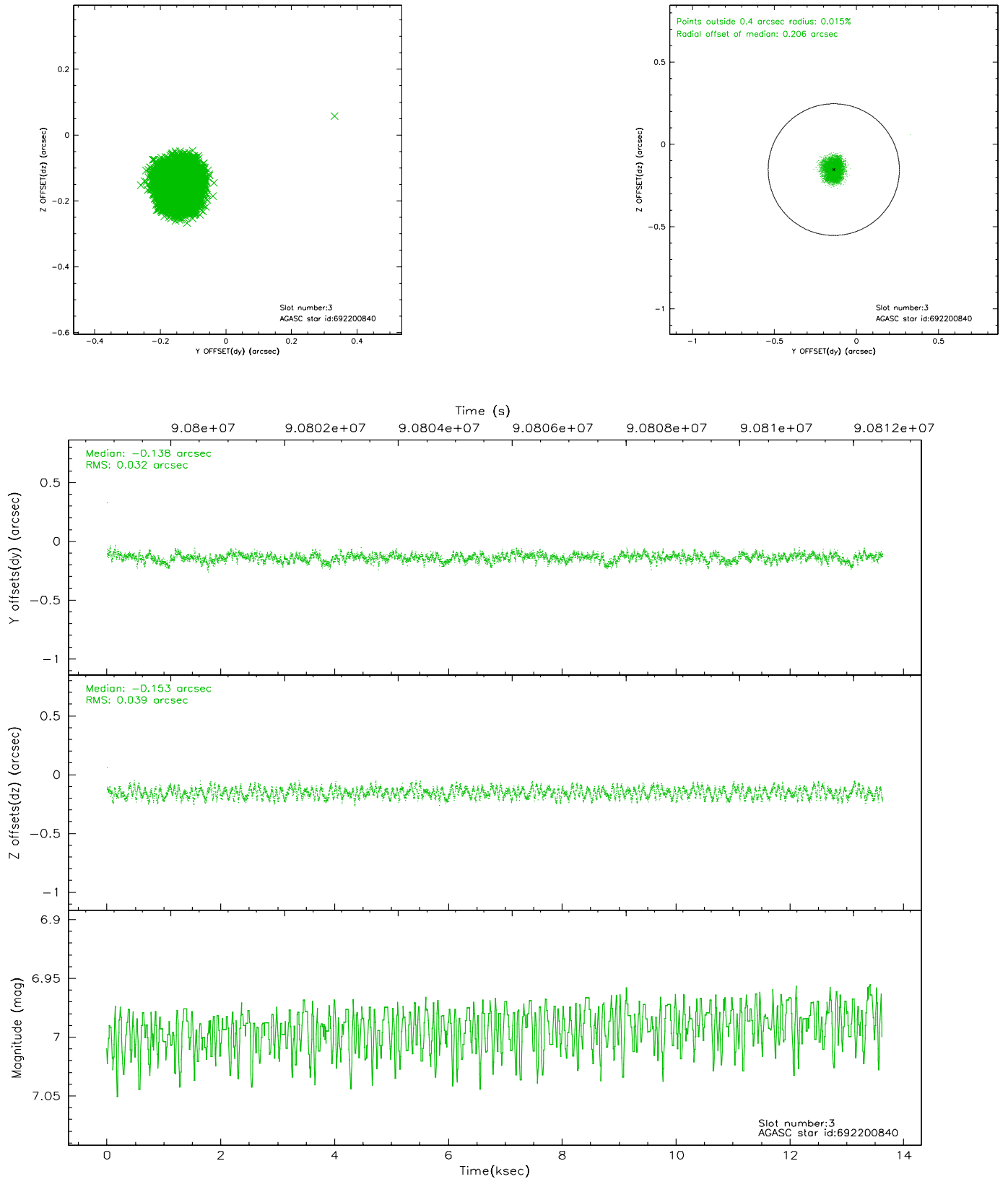


Slot Statistics

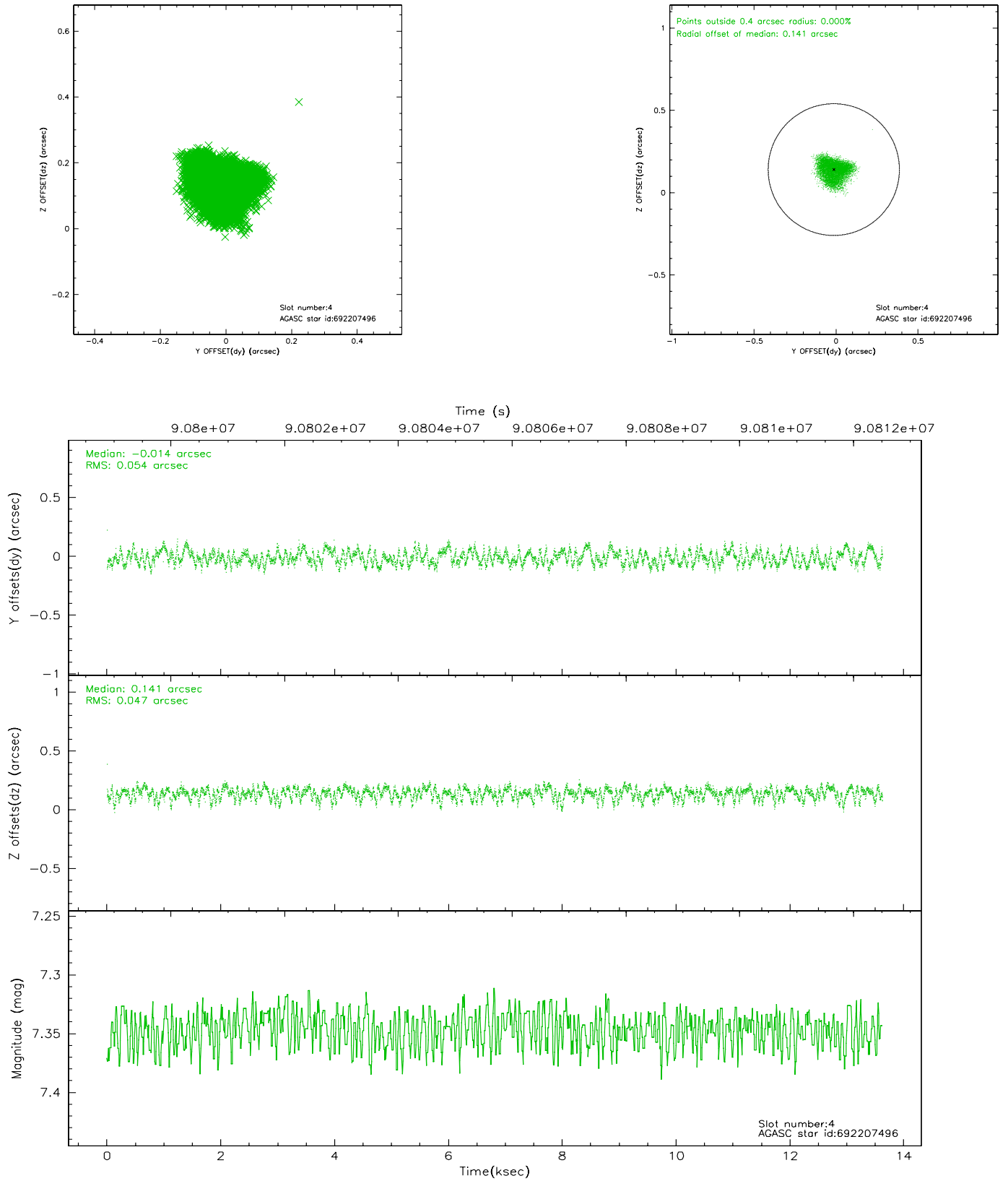
slot	status	id	mag	n_pts	med_dy	med_dz	dr1	dr2	ra	dec	mean_y	mean_z
0	FID	ACIS-S-2	7.11	3323	-0.027	0.014	0.007	0.011	0.000000	0.000000	-754.58	-1726.00
1	FID	ACIS-S-4	7.21	3322	-0.047	0.009	0.005	0.009	0.000000	0.000000	2158.50	182.15
2	FID	ACIS-S-5	7.24	3324	0.043	-0.014	0.007	0.011	0.000000	0.000000	-1806.92	176.15
3	GUIDE	692200840	6.99	6648	-0.138	-0.153	0.055	0.083	31.544710	-10.276216	-2292.46	-1875.38
4	GUIDE	692207496	7.35	6646	-0.014	0.141	0.078	0.115	32.082363	-10.041338	-1194.82	-103.37
5	GUIDE	692207400	8.26	6646	0.009	0.032	0.051	0.083	32.382891	-9.868805	-662.67	1009.57
6	GUIDE	692205768	8.19	6647	0.144	0.015	0.055	0.088	32.434117	-10.419931	602.38	-529.65
7	GUIDE	692202464	9.10	6645	-0.002	-0.031	0.084	0.137	31.840289	-10.514654	-943.86	-1994.39

2.4 Star Slots

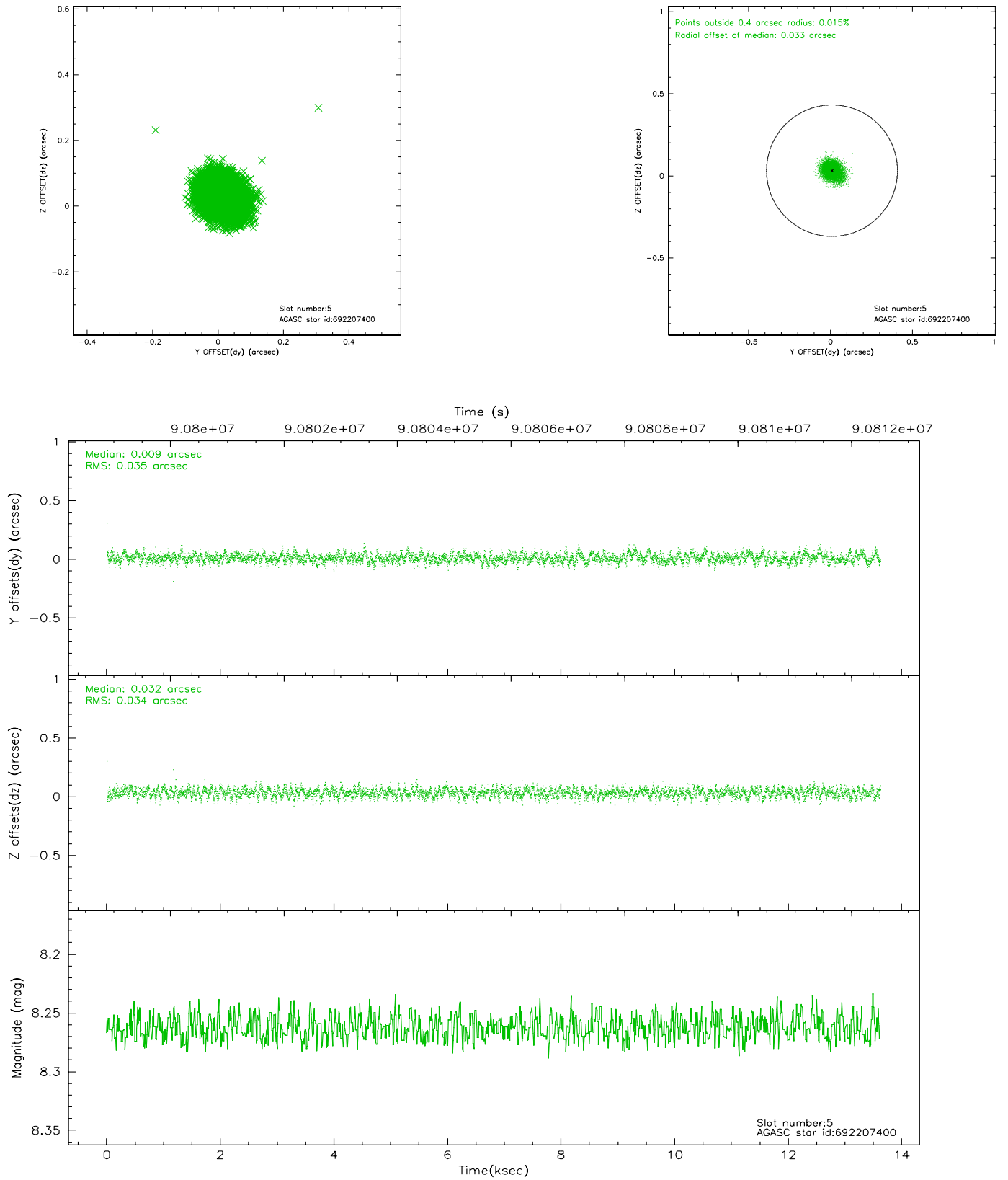
2.4.1 Slot 3



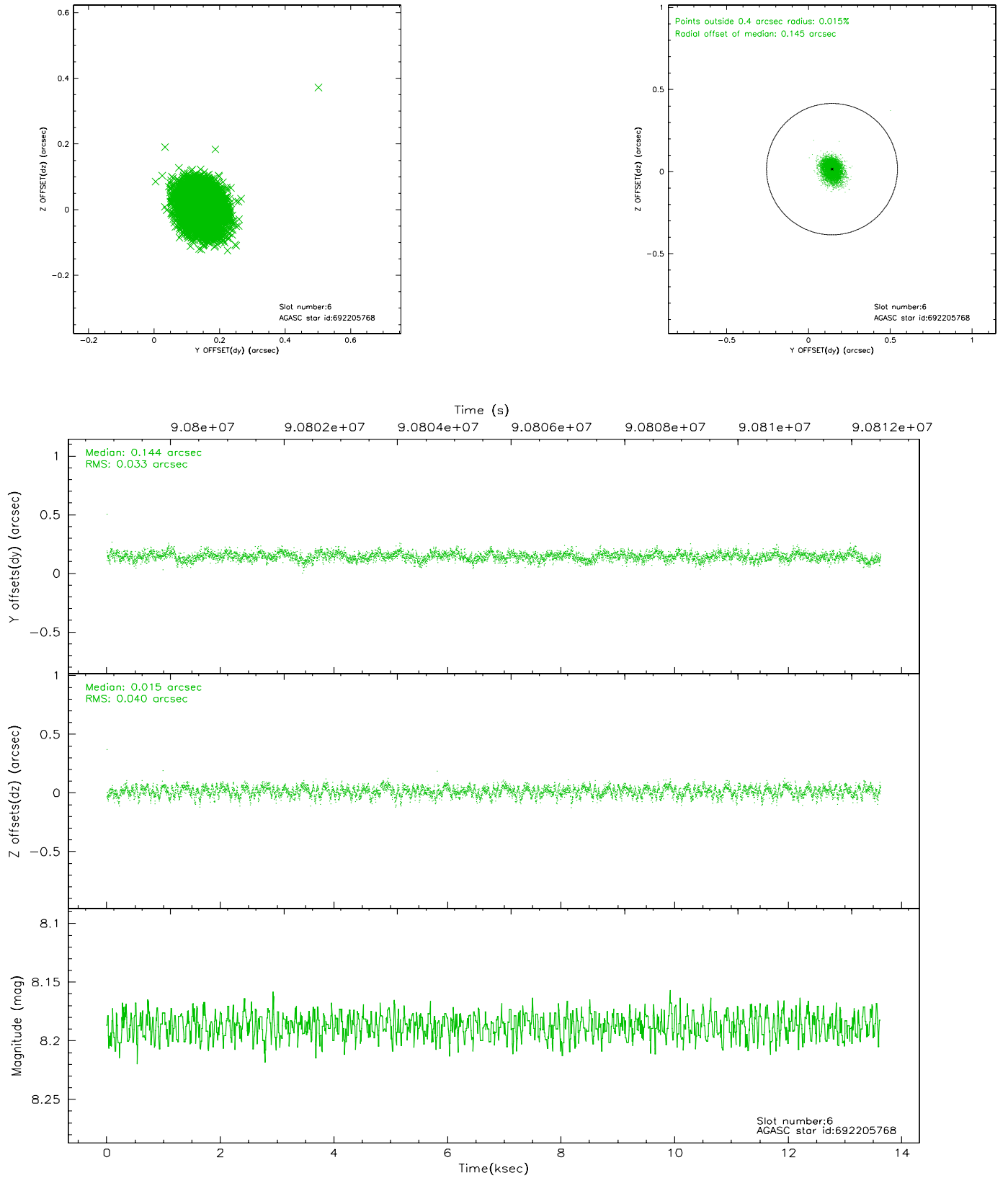
2.4.2 Slot 4



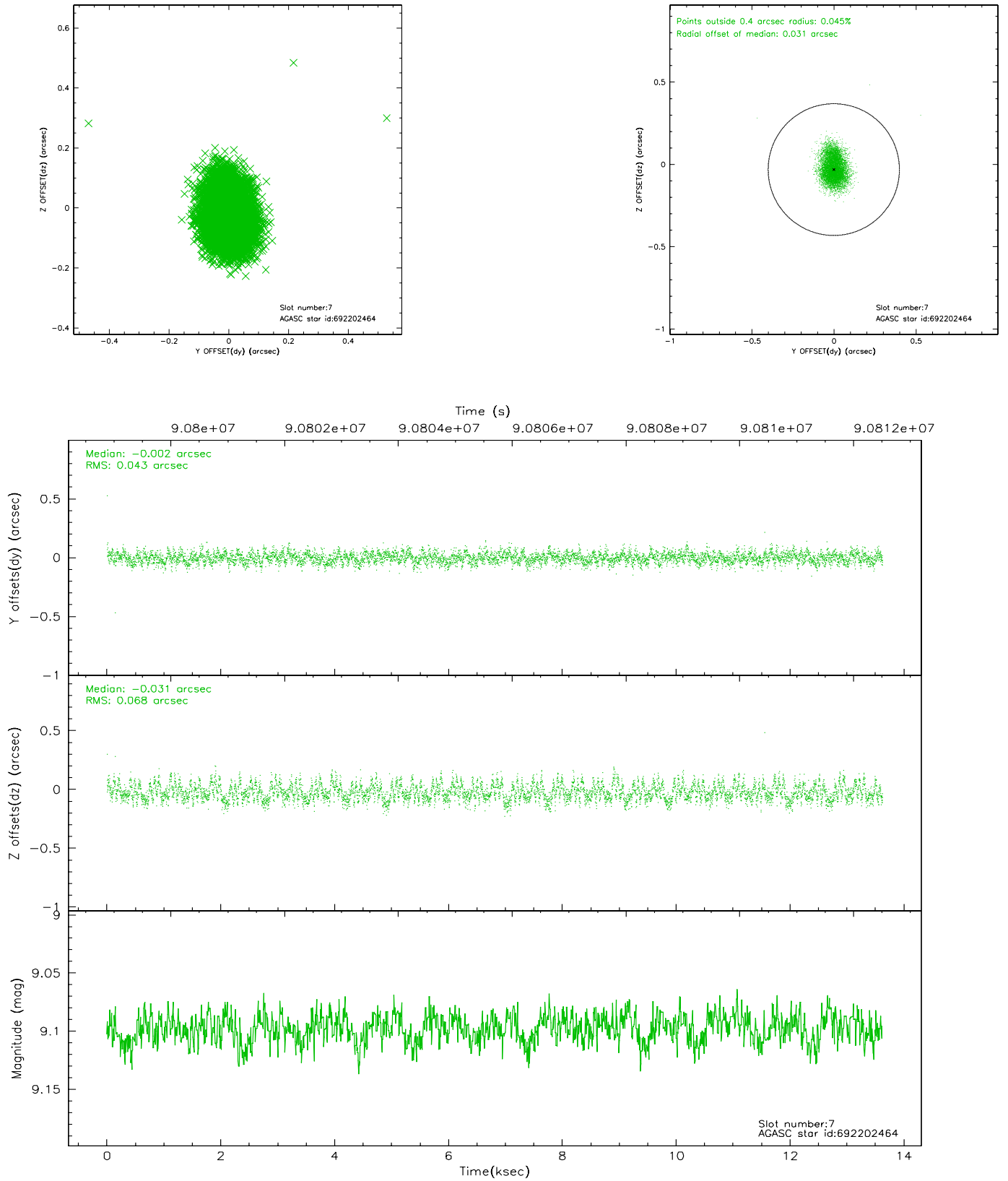
2.4.3 Slot 5



2.4.4 Slot 6

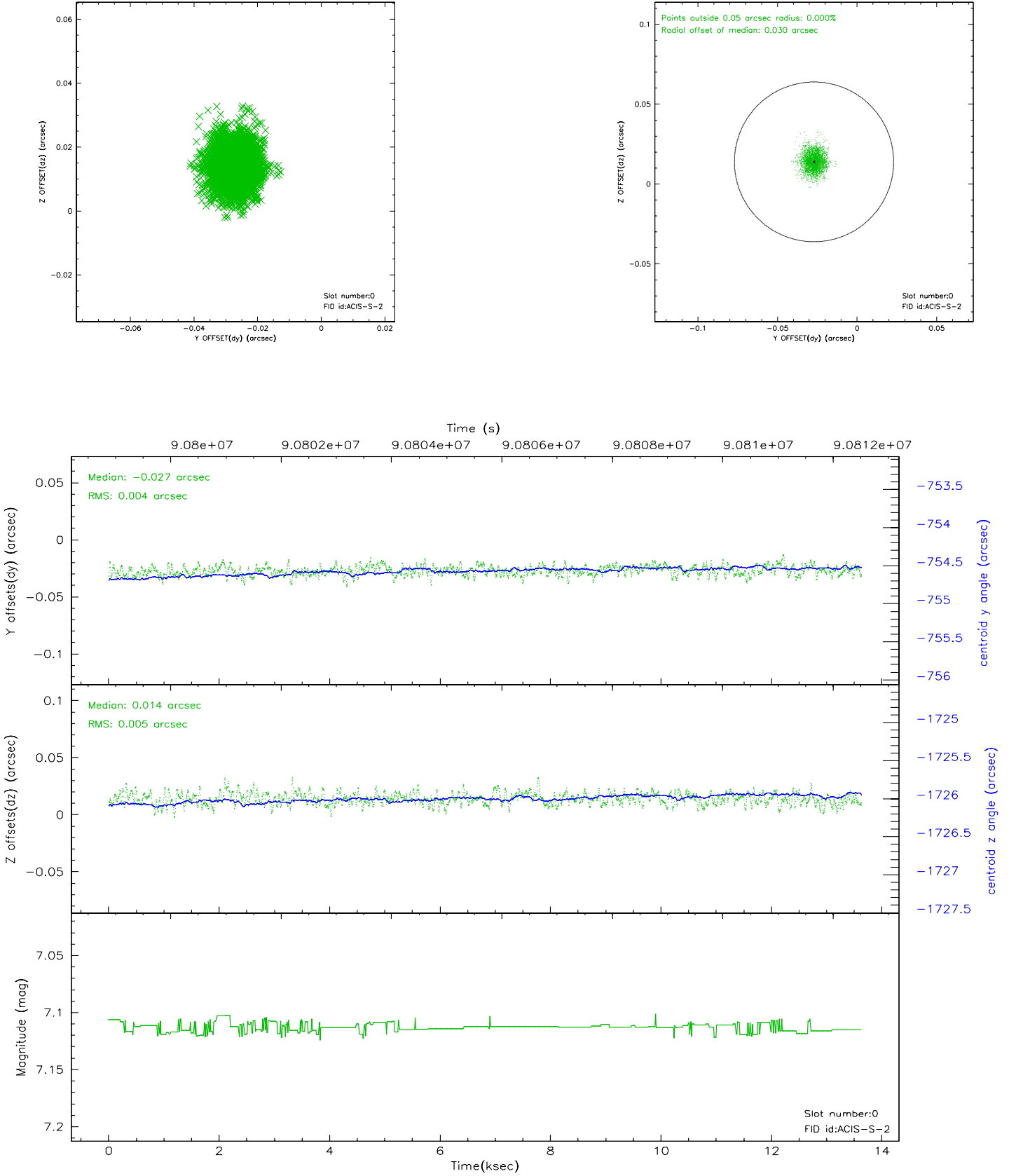


2.4.5 Slot 7

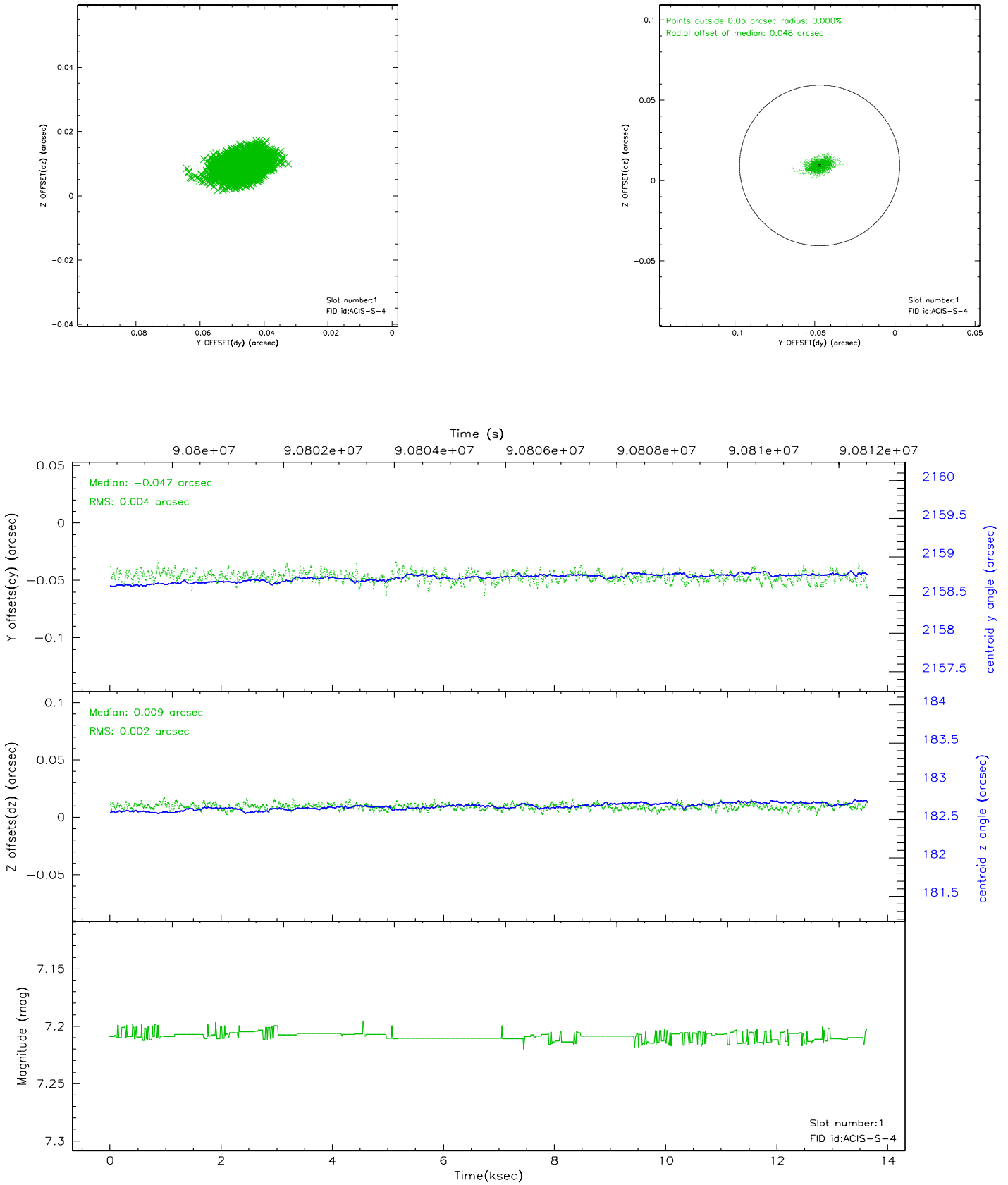


2.5 FID Slots

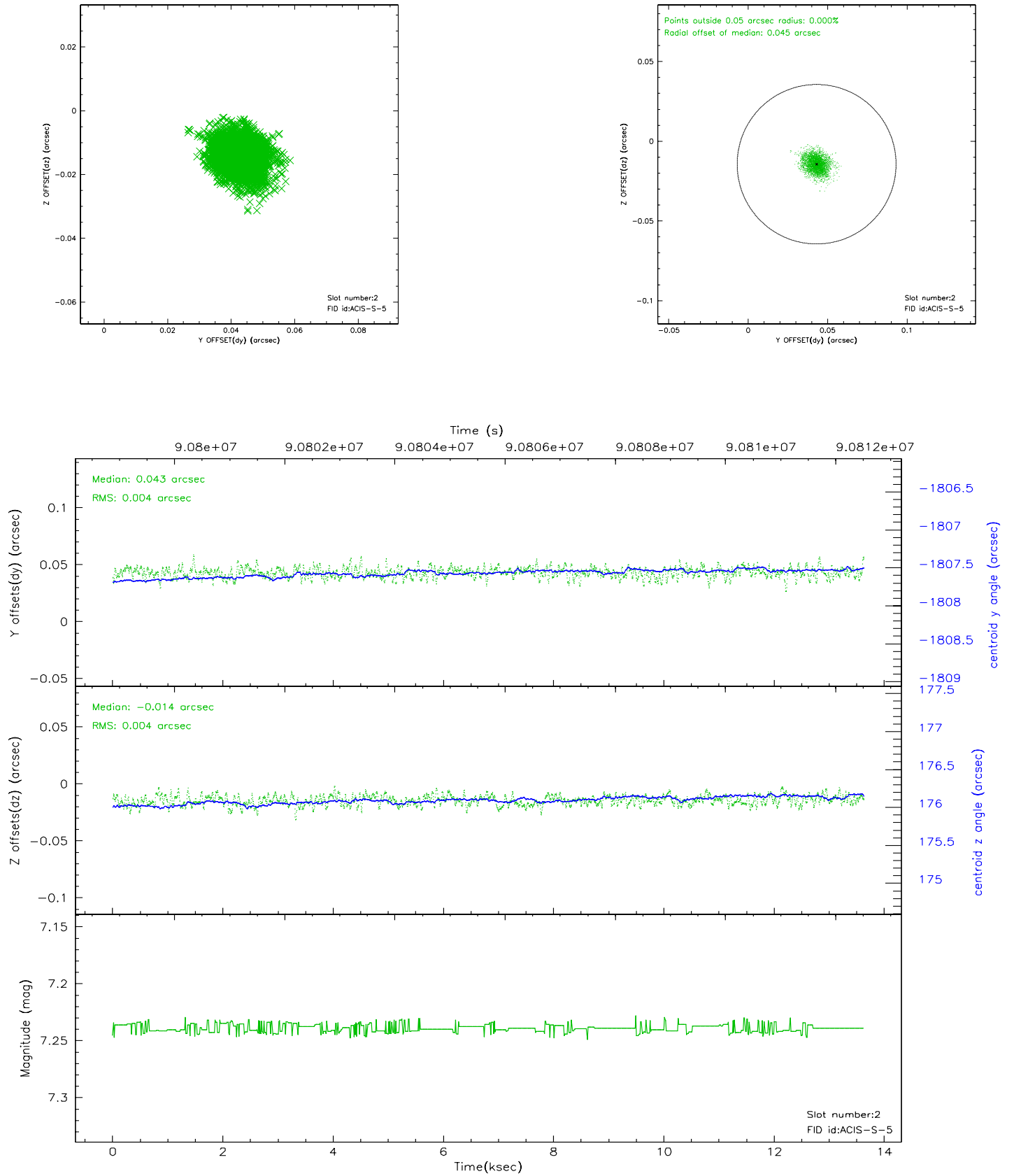
2.5.1 Slot 0



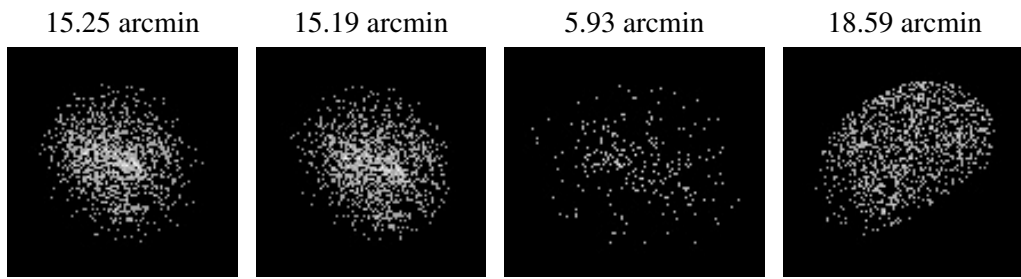
2.5.2 Slot 1



2.5.3 Slot 2



3 Point Sources



A Summary

A.1 Status

V&V Scientist	Jen Lauer
V&V Date (YYYY-MM-DD)	2007.06.18
V&V Edition	1
V&V Disposition and Status	OK
V&V Charge Time	12.729

A.2 Comments

Roll constraint met.