

V&V Reference Report

L2 ASCDS Version : 8.4.4

Observation 9053 - L2 Version 2
Chandra X-Ray Center

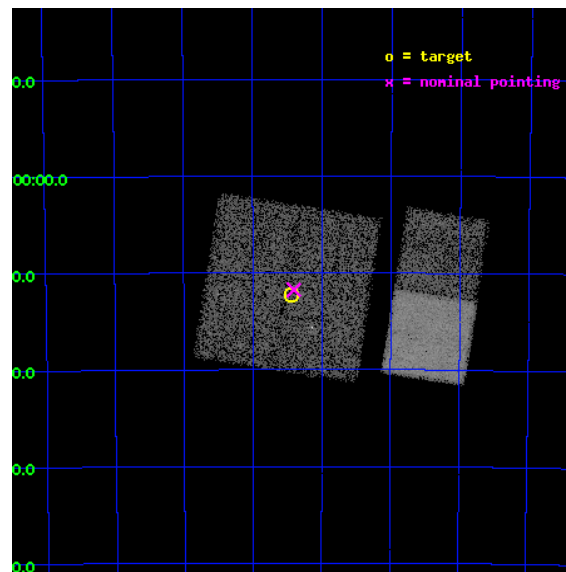
L2 Processing Date : May 7 2012

Contents

1	Front	2
2	OBI	3
2.1	OBI	3
2.1.1	Images	3
2.1.2	Bias	3
2.1.3	Parameters	4
2.1.4	Events	4
2.2	Compared Parameters	5
2.3	Aspect	6
2.4	Star Slots	9
2.4.1	Slot 3	9
2.4.2	Slot 4	10
2.4.3	Slot 5	11
2.4.4	Slot 6	12
2.4.5	Slot 7	13
2.5	FID Slots	14
2.5.1	Slot 0	14
2.5.2	Slot 1	15
2.5.3	Slot 2	16
A	Summary	17
A.1	Status	17
A.2	Comments	17

1 Front

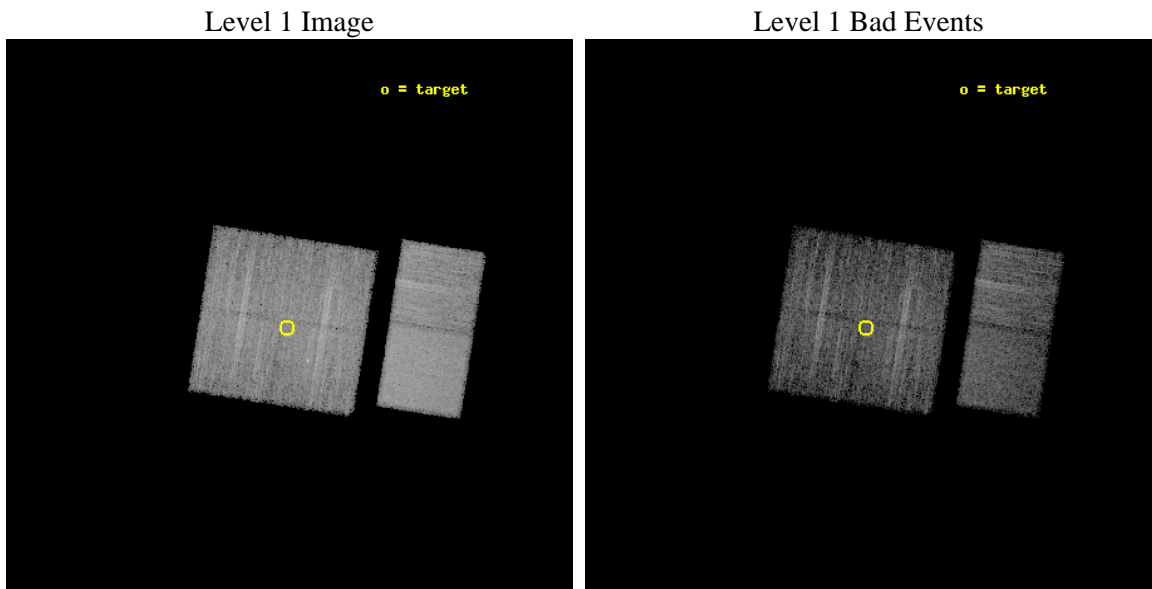
seq_num	400904	Sequence number
obs_id	9053	Observation id
title	Localization and Spectra of INTEGRAL-Selected Sources in the Galactic Plane	Proposal title
observer	Dr. John Tomsick	Principal investigator
object	IGR J14331-6112	Source name
dtcycle	0	
cycle	P	events from which exps? Prim/Second/Both
ra_targ	218.358333	Observer's specified target RA [deg]
dec_targ	-61.203889	Observer's specified target Dec [deg]
ra_nom	218.35128506953	Nominal RA [deg]
dec_nom	-61.196110128811	Nominal Dec [deg]
roll_nom	98.936146254193	Nominal Roll [deg]
revision	2	Processing version of data
ontime	4950.3999816179	Sum of GTIs [s]
livetime	4887.7150362777	Livetime [s]
ontime0	4950.3999816179	Sum of GTIs [s]
ontime1	4950.3999816179	Sum of GTIs [s]
ontime2	4950.3999816179	Sum of GTIs [s]
ontime3	4950.3999816179	Sum of GTIs [s]
ontime6	4950.3999816179	Sum of GTIs [s]
ontime7	4950.3999816179	Sum of GTIs [s]
l2events	55572	Number of level 2 events



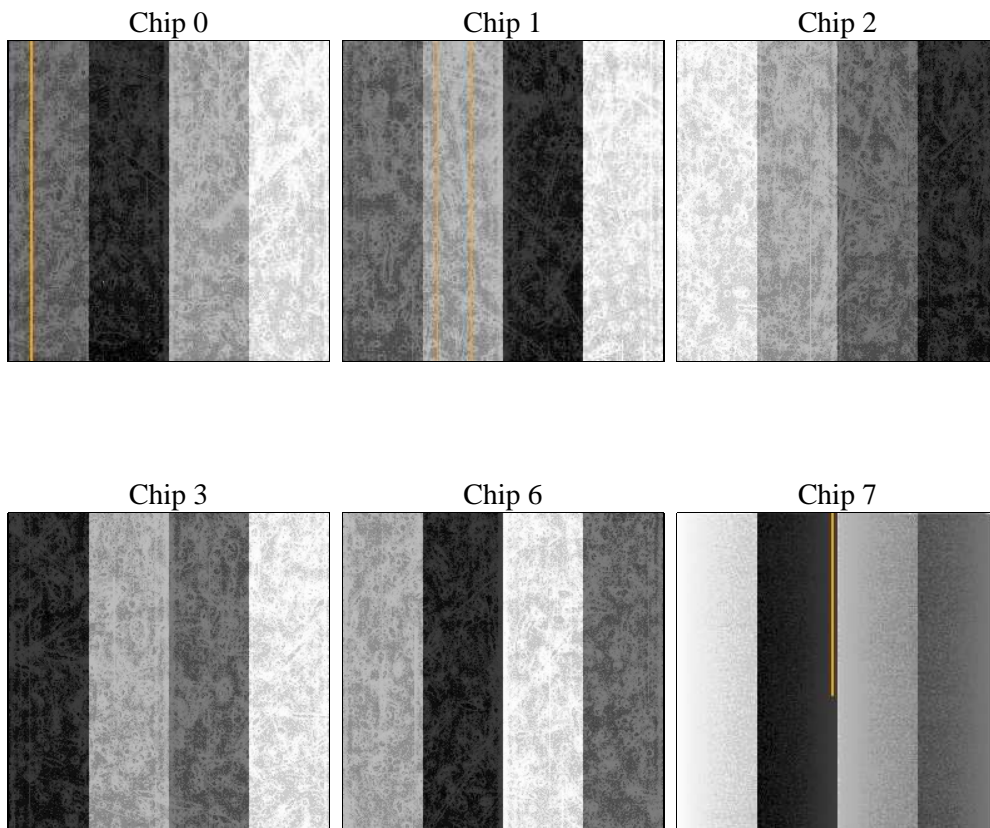
2 OBI

2.1 OBI

2.1.1 Images



2.1.2 Bias



2.1.3 Parameters

obi_num	0	Obi number	sched_exp_time	5000.000000	[s] Scheduled observation exposure time
ascdsver	8.4.4	Processing system revision	ontime	4950.3999816179	Sum of GTIs [s]
caldsver	4.4.9	 	ontime0	4950.3999816179	Sum of GTIs [s]
date	2012-05-07T15:03:19	Date and time of file creation	ontime1	4950.3999816179	Sum of GTIs [s]
revision	2	Processing version of data	ontime2	4950.3999816179	Sum of GTIs [s]
			ontime3	4950.3999816179	Sum of GTIs [s]
			ontime6	4950.3999816179	Sum of GTIs [s]
			ontime7	4950.3999816179	Sum of GTIs [s]
			l1events	306931	Number of level 1 events

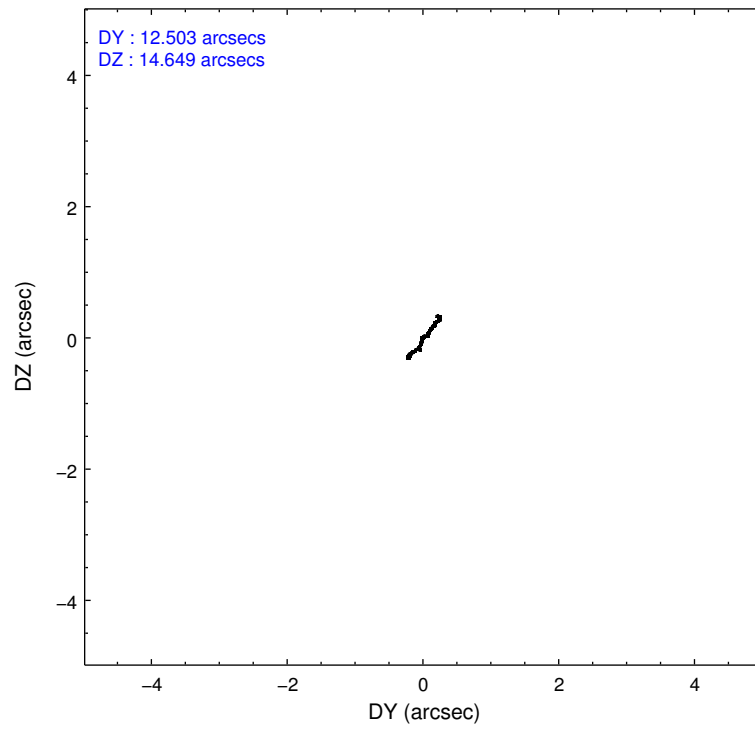
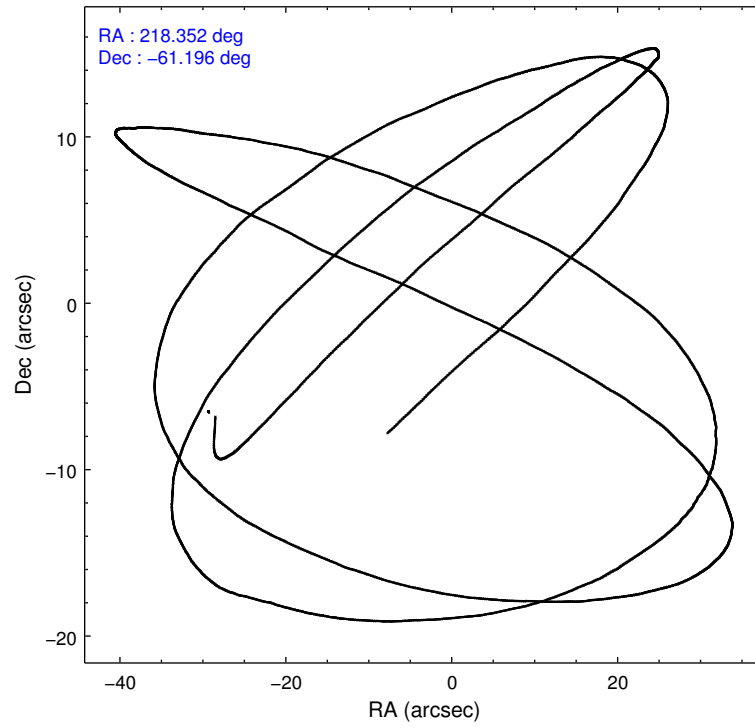
2.1.4 Events

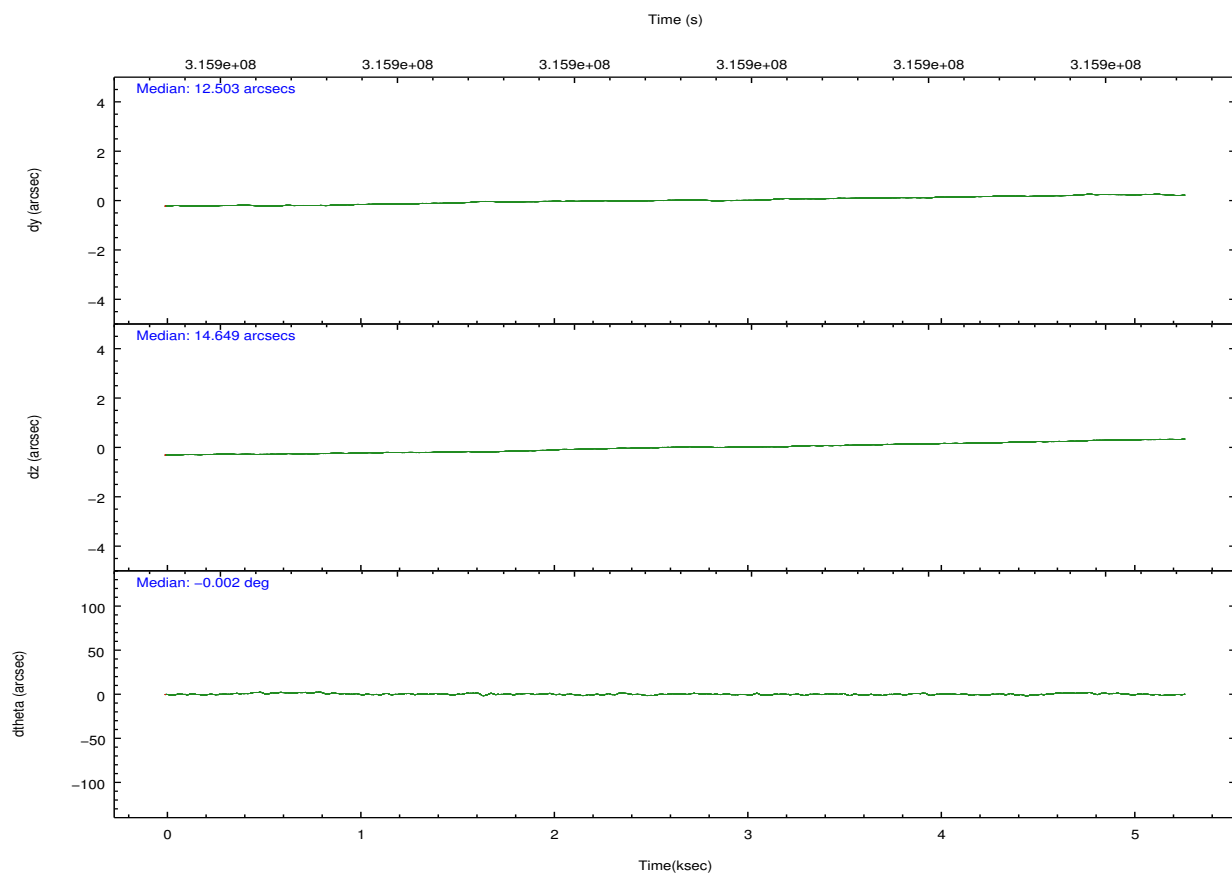
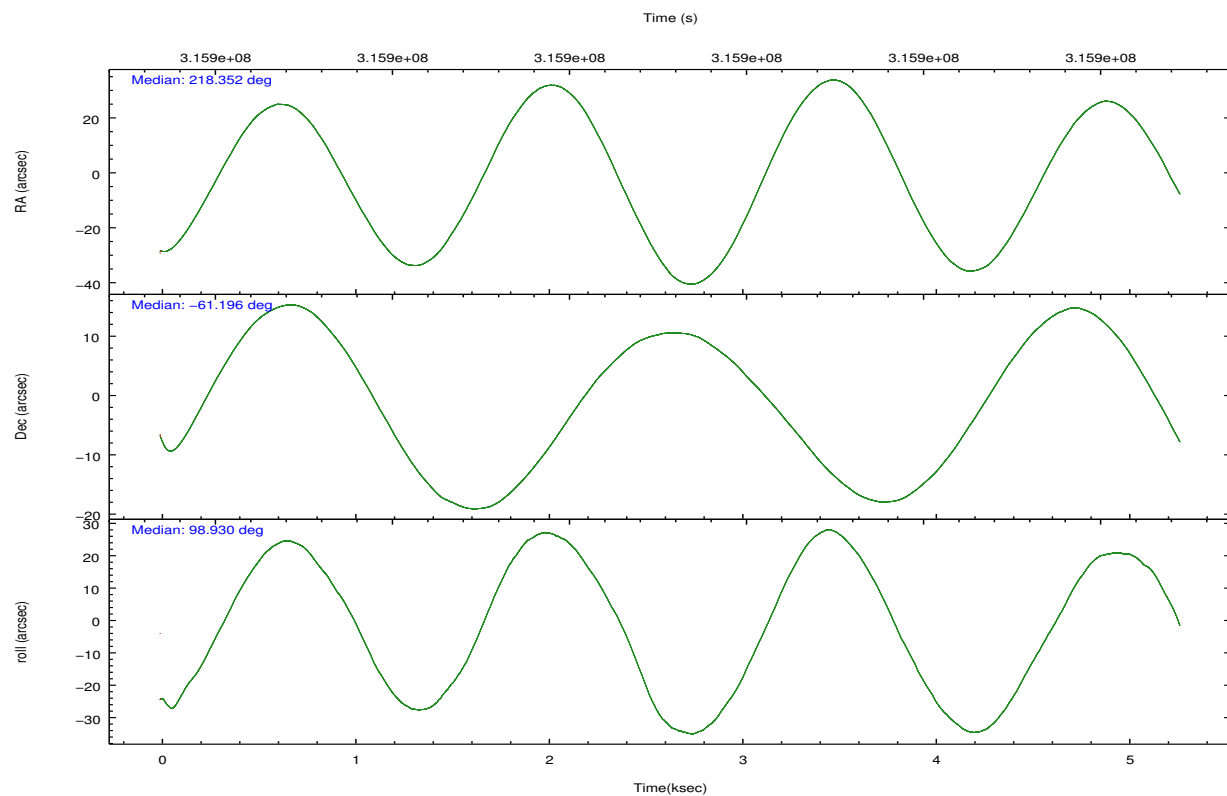
	ccd 0	ccd 1	ccd 2	ccd 3	ccd 6	ccd 7		ccd 0	ccd 1	ccd 2	ccd 3	ccd 6	ccd 7
level 1 events	44741	45413	48331	48902	51881	67663	grade 0 events	2644	2635	2968	3250	2481	2436
rejected events	38536	38854	42057	42125	45822	39104		5%	5%	6%	6%	4%	3%
rejected %	86%	85%	87%	86%	88%	57%	grade 1 events	46	26	29	45	31	76
								0%	0%	0%	0%	0%	0%
							grade 2 events	1400	1519	1243	1286	1287	5731
								3%	3%	2%	2%	2%	8%
							grade 3 events	605	614	547	587	551	2513
								1%	1%	1%	1%	1%	3%
							grade 4 events	533	623	561	596	515	2360
								1%	1%	1%	1%	0%	3%
							grade 5 events	1973	2133	1898	2370	2406	6346
								4%	4%	3%	4%	4%	9%
							grade 6 events	1029	1177	964	1068	1230	15531
								2%	2%	1%	2%	2%	22%
							grade 7 events	36511	36686	40121	39700	43380	32670
								81%	80%	83%	81%	83%	48%

2.2 Compared Parameters

Parameter	Planned	Actual	Parameter	Planned	Actual
Instrument	ACIS	ACIS	Obspar format version number	7	7
Detector	ACIS-012367	ACIS-012367	Obspar file type	PREDICTED	ACTUAL
Grating	NONE	NONE	Obspar update status	NONE	UPDATED
Data mode	FAINT	FAINT	CCD I0 on	Y	Y
Observation mode	POINTING	POINTING	CCD I1 on	Y	Y
[deg] Pointing RA	218.386984	218.3512850695276	CCD I2 on	Y	Y
[deg] Pointing Dec	-61.217956	-61.19611012881094	CCD I3 on	Y	Y
[deg] Pointing Roll	98.758761	98.93614625419316	CCD S0 on	N	N
[mm] SIM focus pos	-0.782348	-0.7809083437167272	CCD S1 on	N	N
[mm] SIM defocus	0	0.001439871863259334	CCD S2 on	O1	Y
[mm] SIM translation stage pos	-233.592463	-233.5874344608287	CCD S3 on	O2	Y
[mm] SIM translation stage offset	0	-0.005018542100998502	CCD S4 on	N	N
[s] Observation start time (MET)	315895203.184000	315894199.24538	CCD S5 on	N	N
Observation start date	2008-01-05T04:38:58	2008-01-05T04:23:19	Number of optional ACIS chips dropped	0	0
[s] Observation end time (MET)	315900203.184000	315901633.05824	On-chip summing requested	N	N
Observation end date	2008-01-05T06:02:18	2008-01-05T06:27:13	Subarray requested	NONE	NONE
Read mode	TIMED	TIMED	Alternating exposures requested	N	N
			[s] Primary exposure time	0.000000	3.2

2.3 Aspect



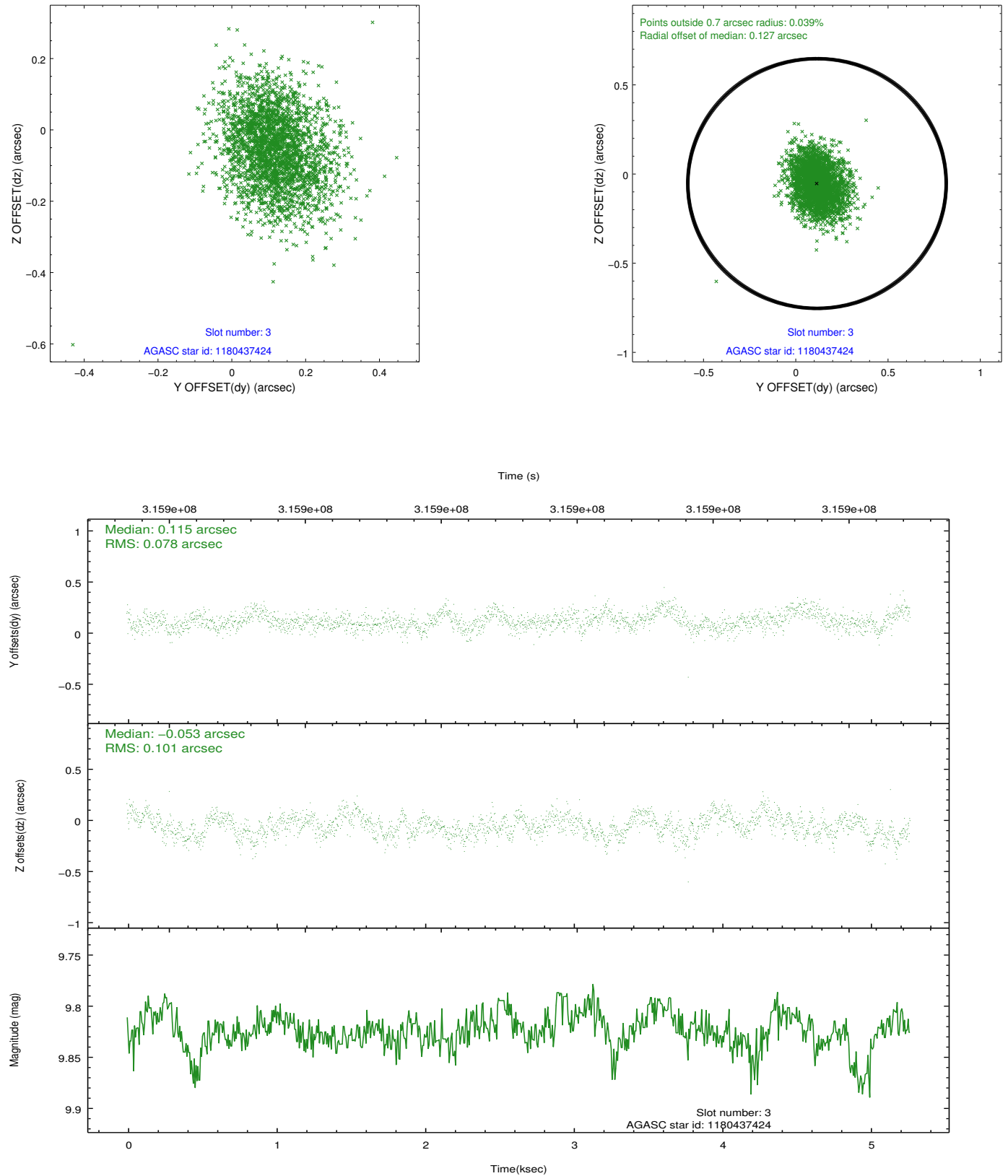


Slot Statistics

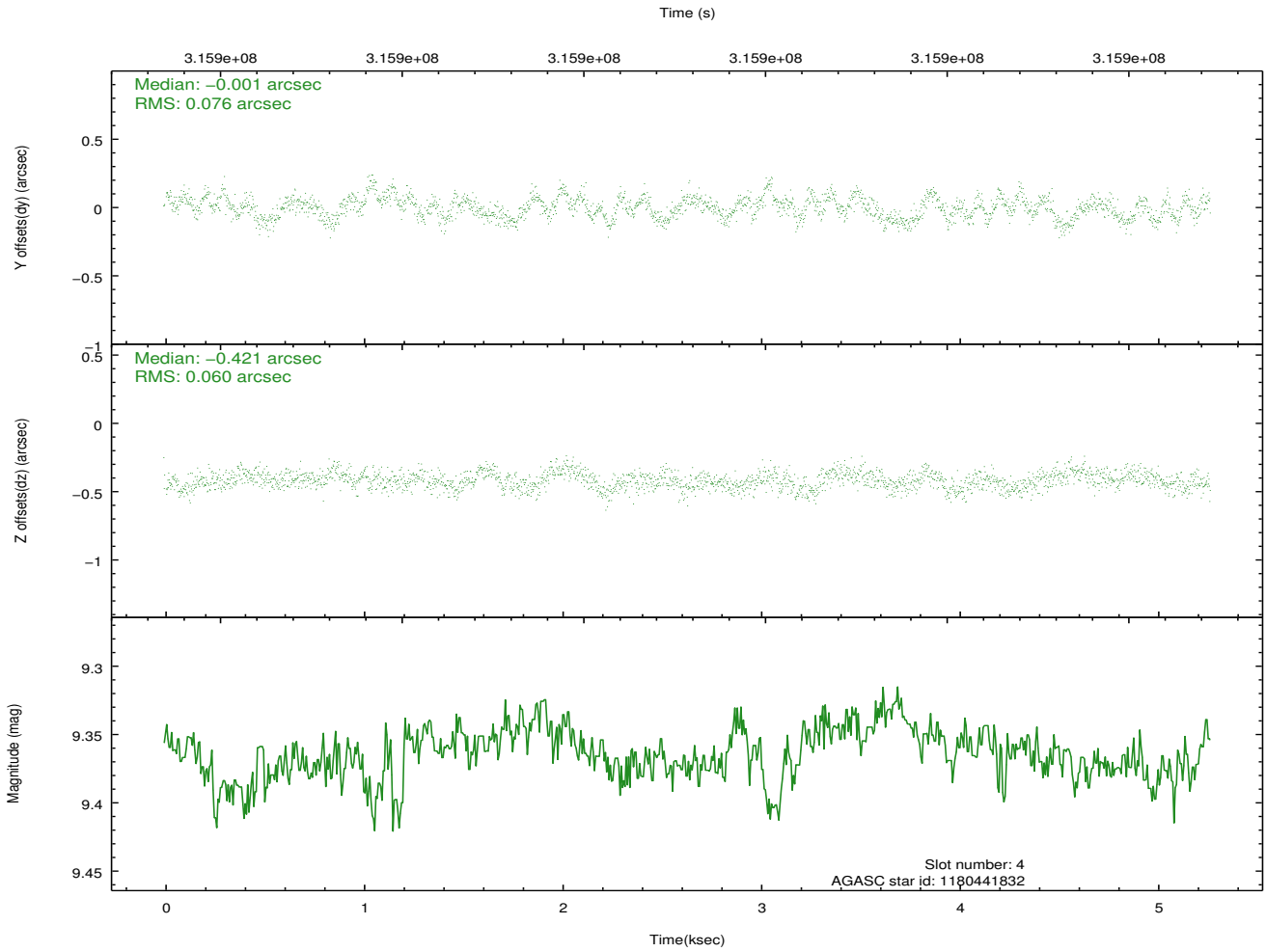
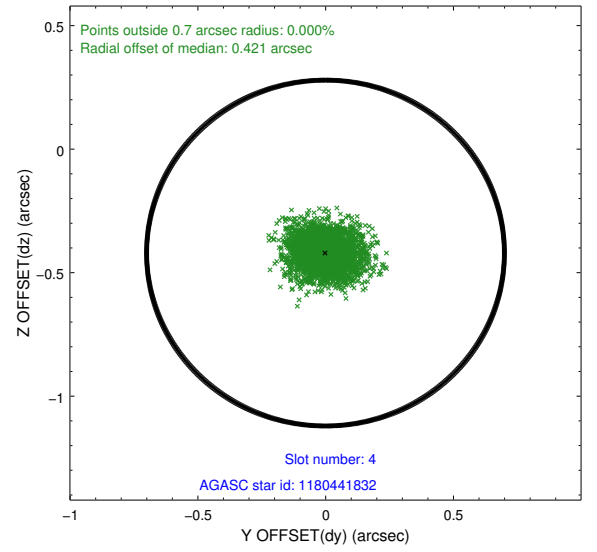
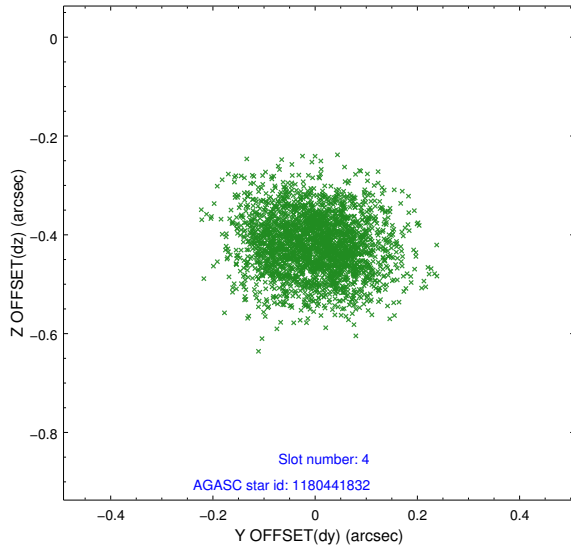
slot	status	id	mag	n_pts	med_dy	med_dz	dr1	dr2	ra	dec	mean_y	mean_z
0	FID	ACIS-I-2	7.14	1286	-0.017	-0.089	0.011	0.023	0.000000	0.000000	-767.18	-844.67
1	FID	ACIS-I-5	7.22	1286	-0.171	0.061	0.011	0.019	0.000000	0.000000	-1821.94	1058.75
2	FID	ACIS-I-6	7.23	1286	0.094	0.098	0.009	0.016	0.000000	0.000000	391.41	1704.59
3	GUIDE	1180437424	9.82	2570	0.115	-0.053	0.135	0.217	217.629785	-61.441282	-605.27	1412.80
4	GUIDE	1180441832	9.36	2563	-0.001	-0.421	0.102	0.168	217.158701	-61.614813	-1113.53	2299.30
5	GUIDE	1180579504	9.57	2542	0.007	0.195	0.123	0.198	219.500103	-61.658654	-1875.54	-1633.87
6	GUIDE	1180474640	10.13	2564	-0.034	0.163	0.170	0.280	218.426905	-60.596271	2199.03	-409.59
7	GUIDE	1180603632	10.08	2566	-0.090	0.134	0.172	0.292	219.765447	-61.409249	-1067.48	-2237.24

2.4 Star Slots

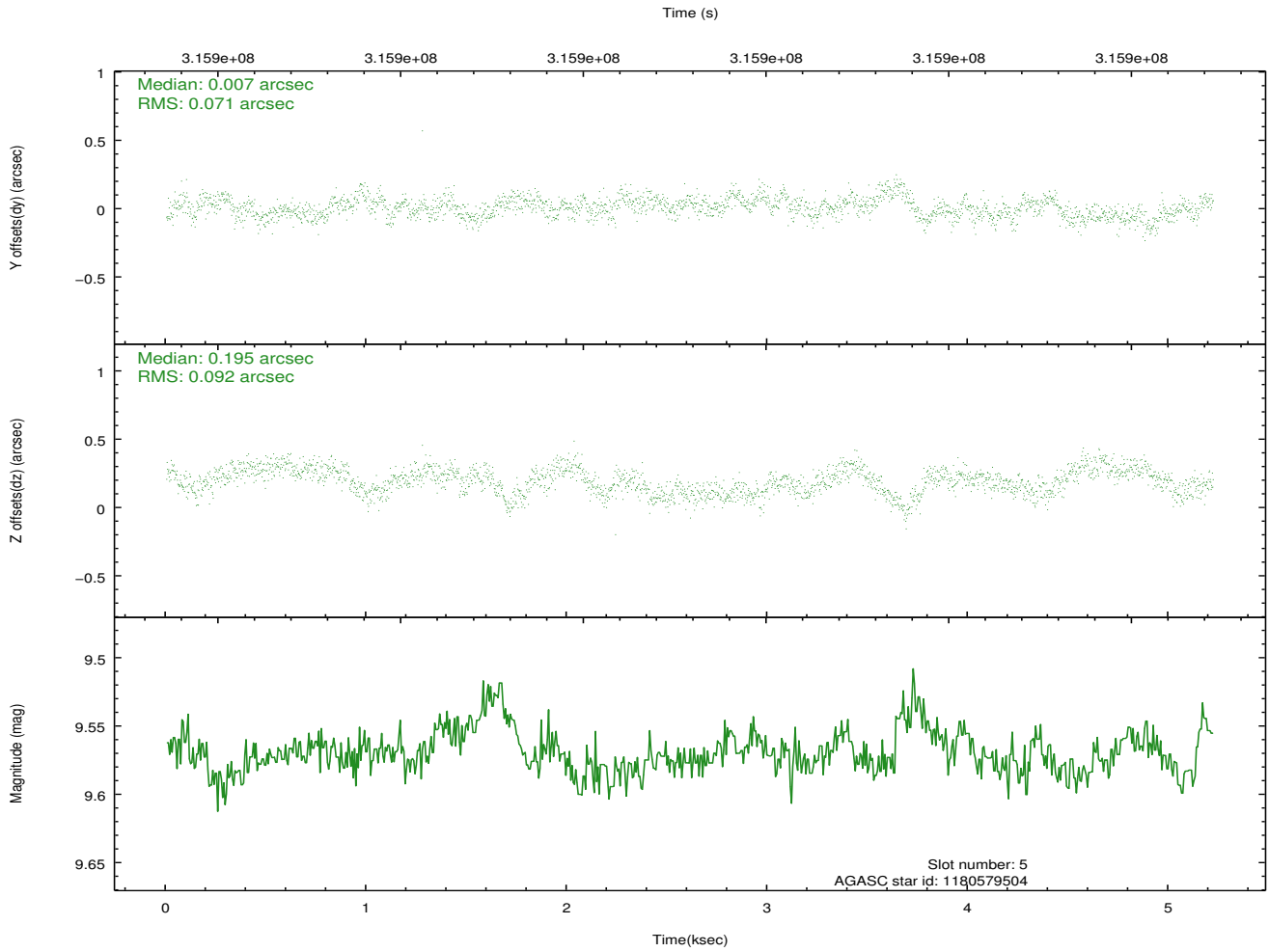
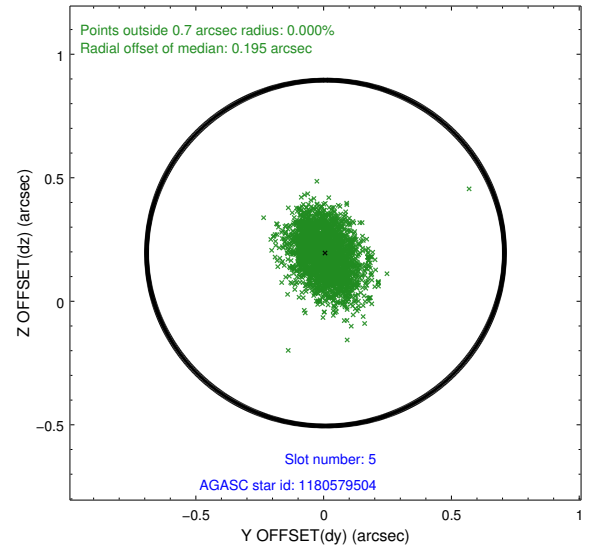
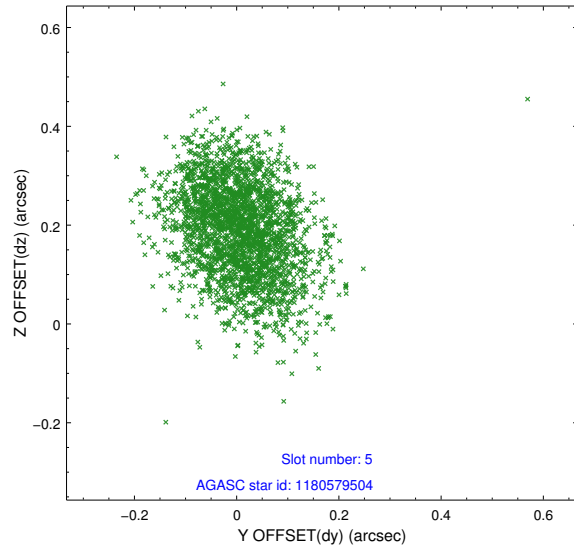
2.4.1 Slot 3



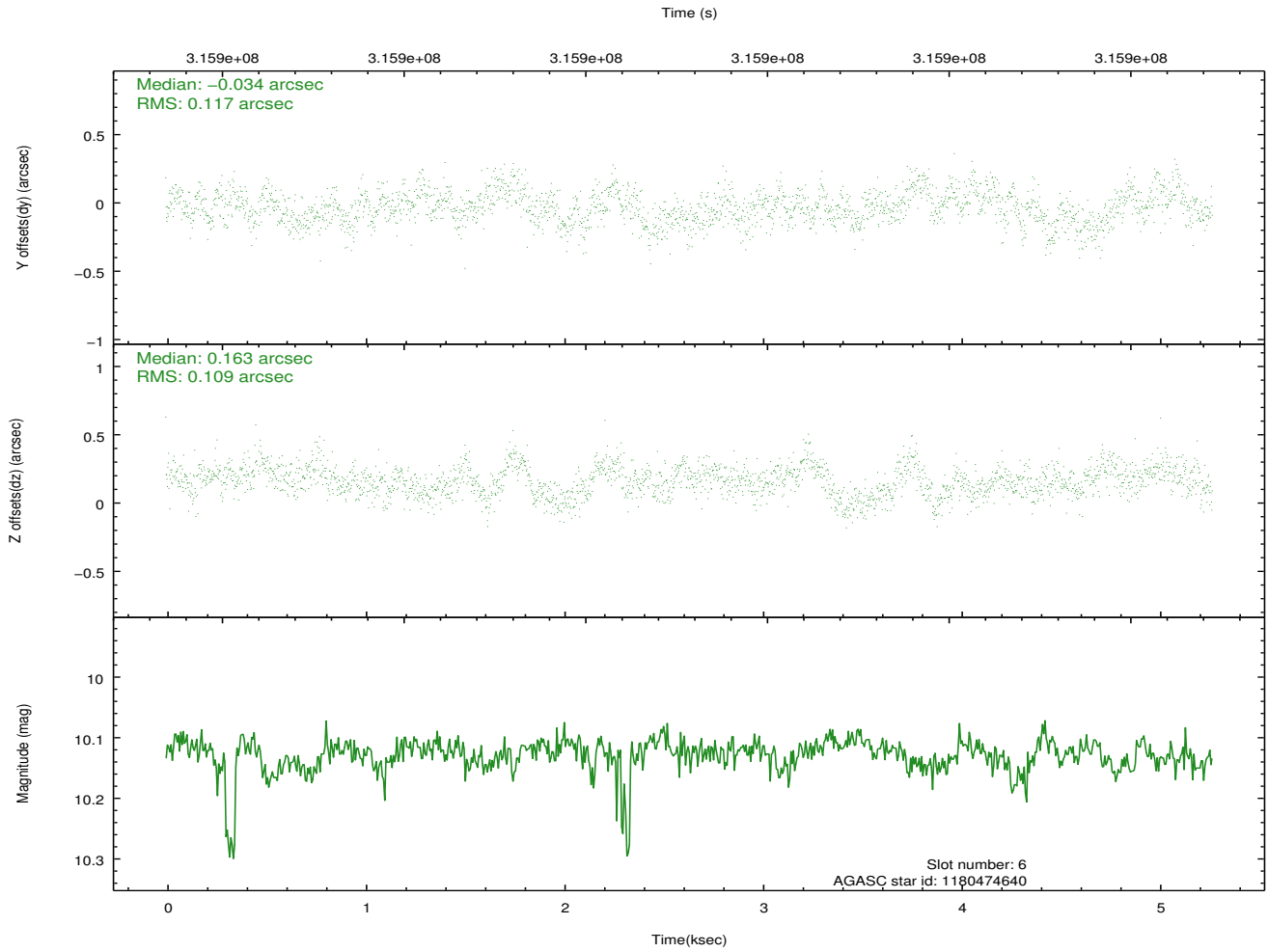
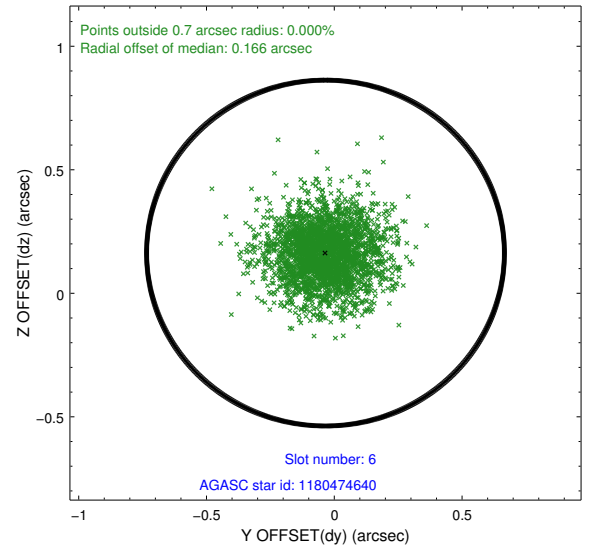
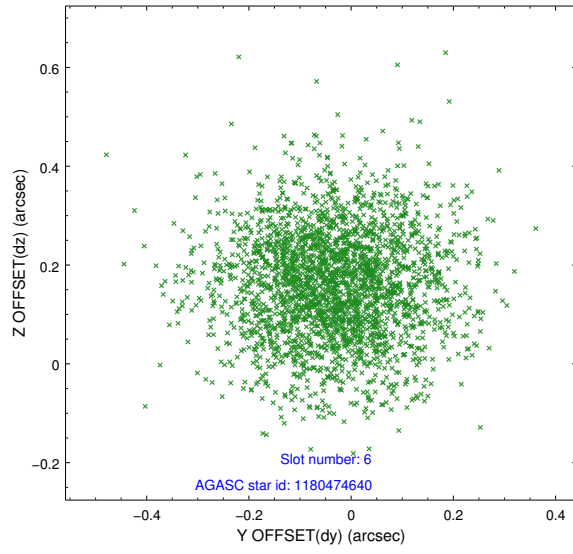
2.4.2 Slot 4



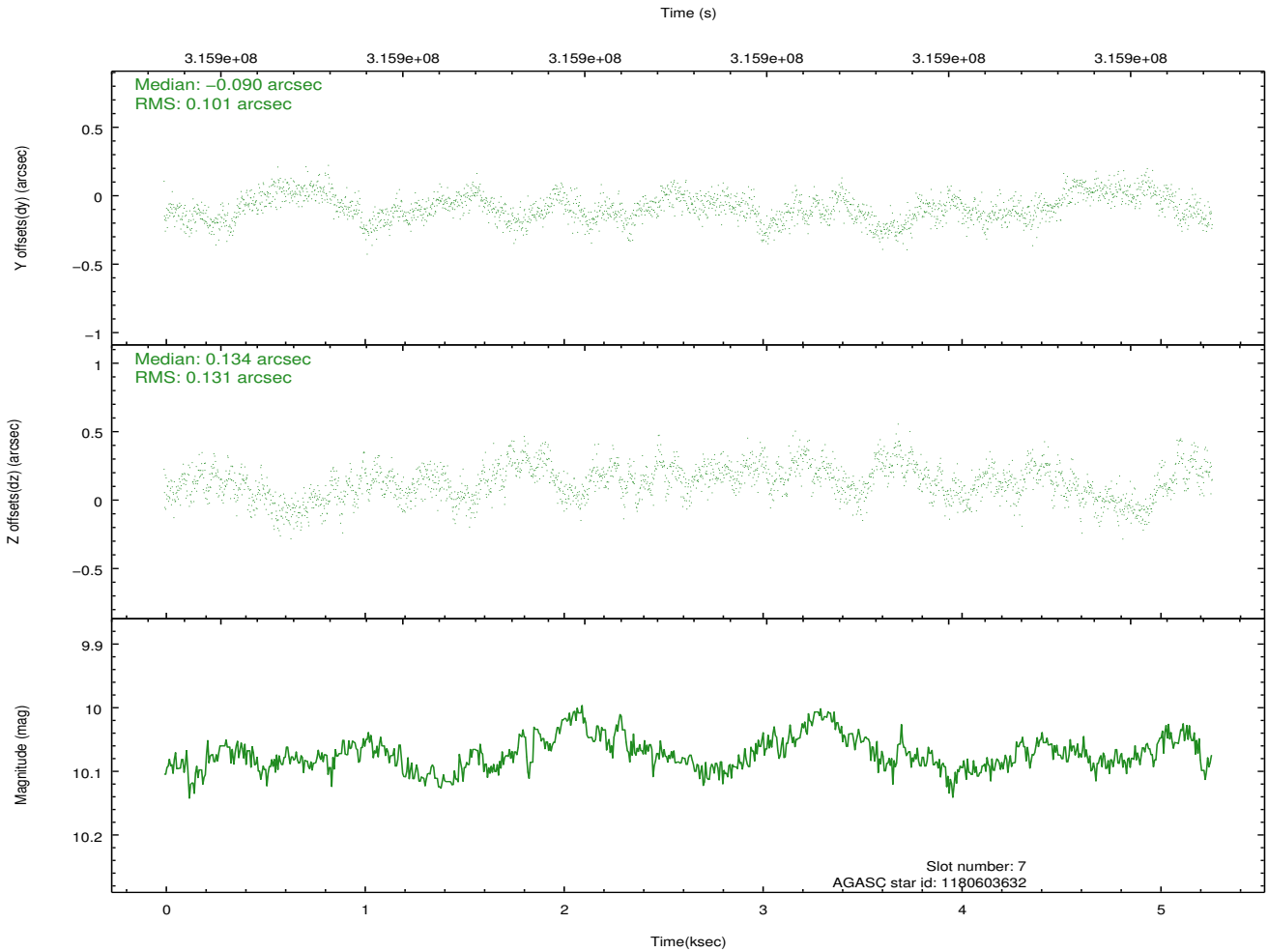
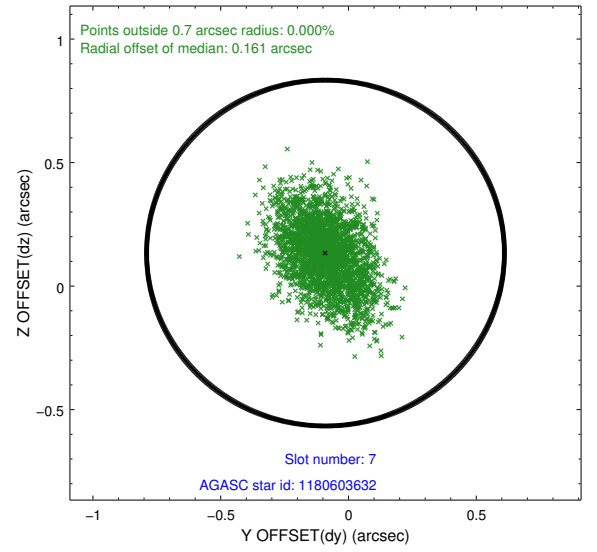
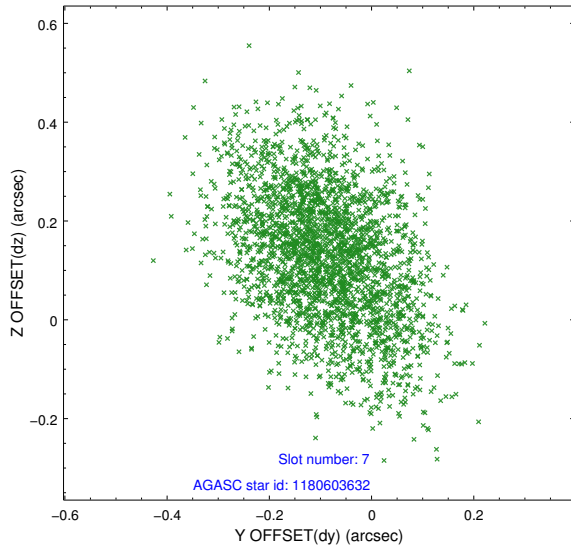
2.4.3 Slot 5



2.4.4 Slot 6

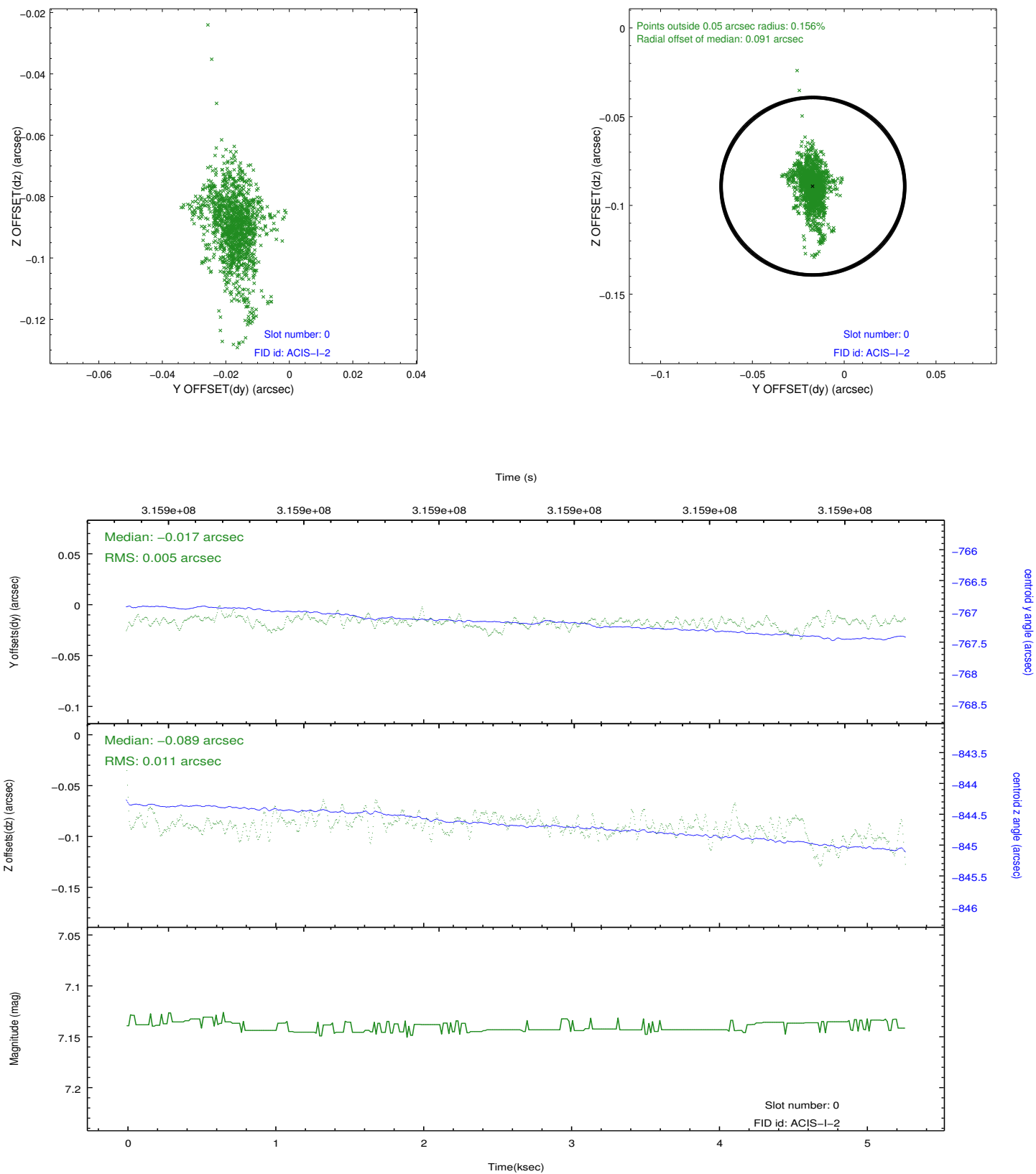


2.4.5 Slot 7

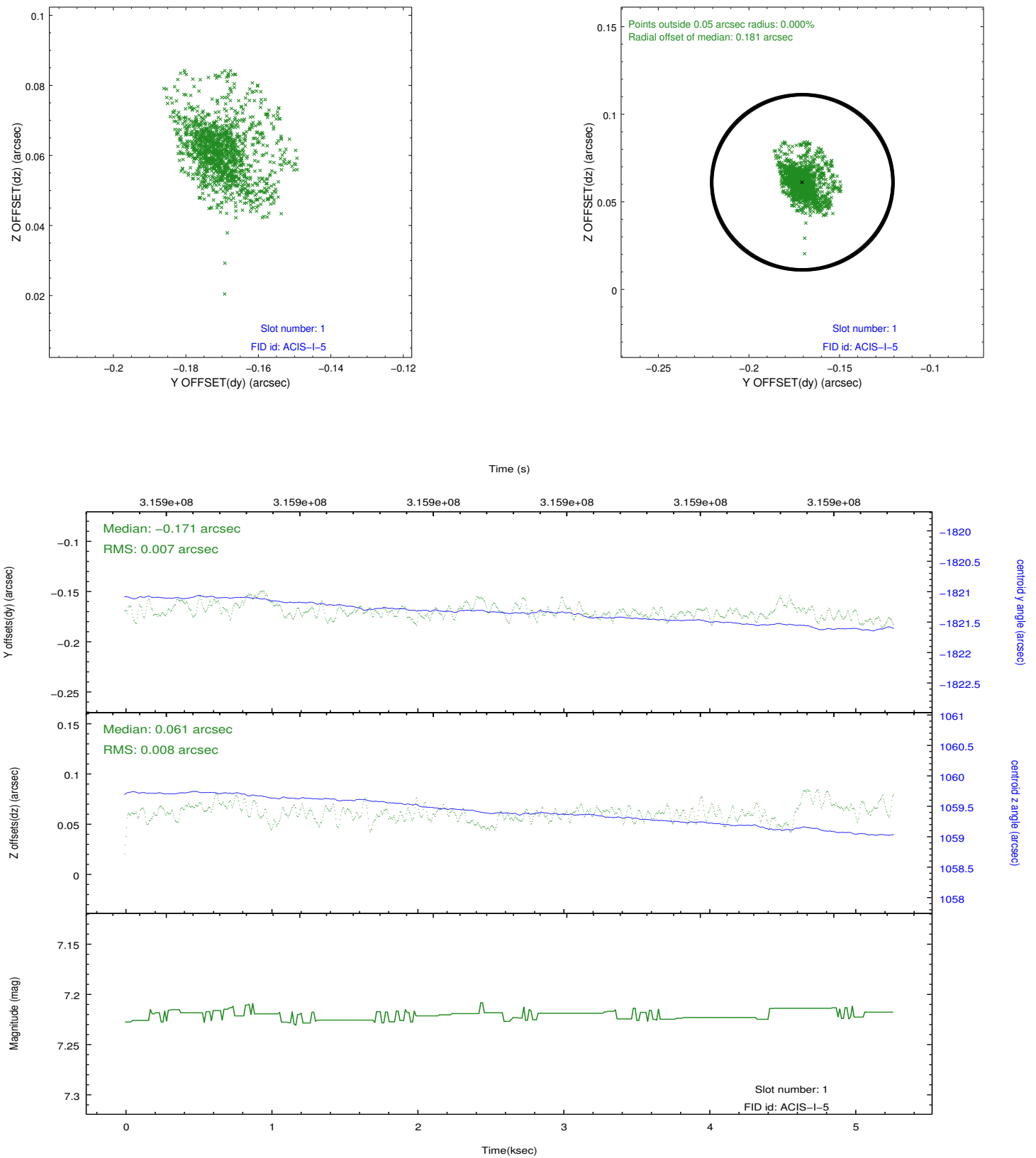


2.5 FID Slots

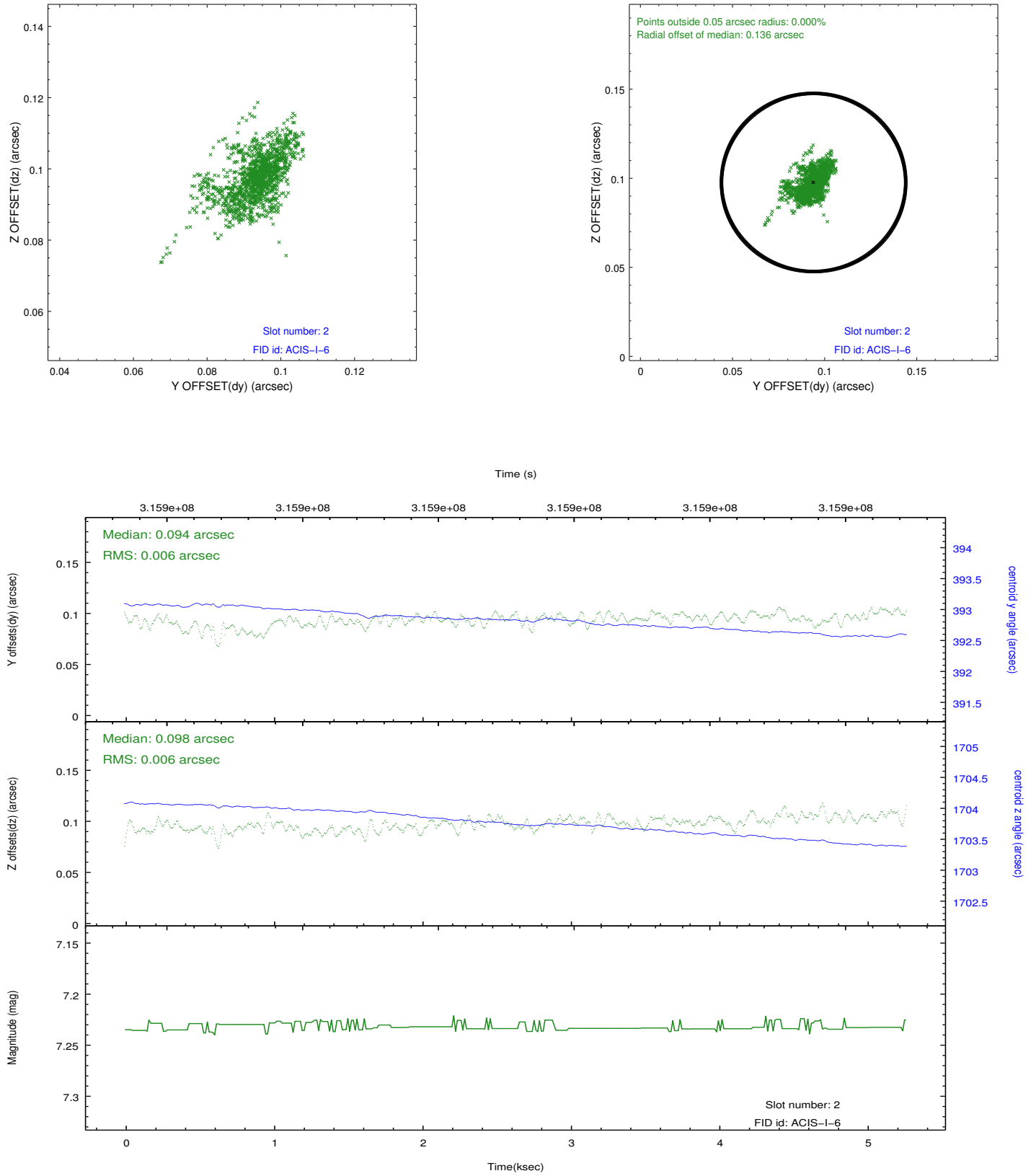
2.5.1 Slot 0



2.5.2 Slot 1



2.5.3 Slot 2



A Summary

A.1 Status

V&V Scientist	Jen Lauer
V&V Date (YYYY-MM-DD)	2012.05.09
V&V Edition	1
V&V Disposition and Status	OK
V&V Charge Time	4.95039998

A.2 Comments

Joint proposal: NOAO