

V&V Reference Report

L2 ASCDS Version : 8.4.5

Observation 893 - L2 Version 4
Chandra X-Ray Center

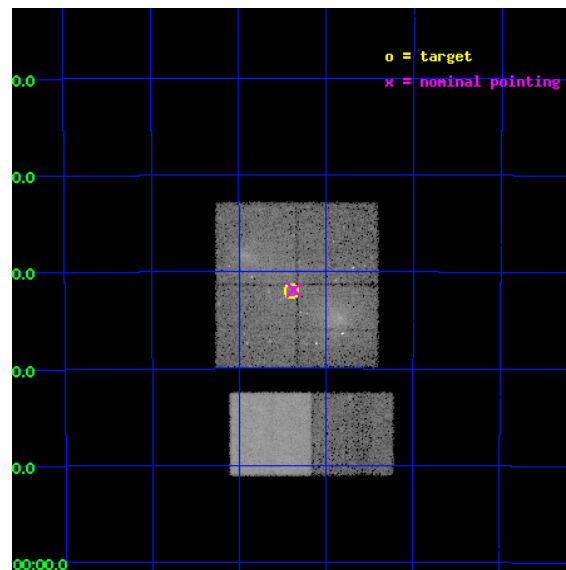
L2 Processing Date : Aug 27 2012

Contents

1	Front	2
2	OBI	3
2.1	OBI	3
2.1.1	Images	3
2.1.2	Bias	3
2.1.3	Parameters	4
2.1.4	Events	4
2.2	Compared Parameters	5
2.3	Aspect	6
2.4	Star Slots	9
2.4.1	Slot 3	9
2.4.2	Slot 4	10
2.4.3	Slot 5	11
2.4.4	Slot 6	12
2.5	FID Slots	13
2.5.1	Slot 0	13
2.5.2	Slot 1	14
2.5.3	Slot 2	15
A	Summary	16
A.1	Status	16
A.2	Comments	16

1 Front

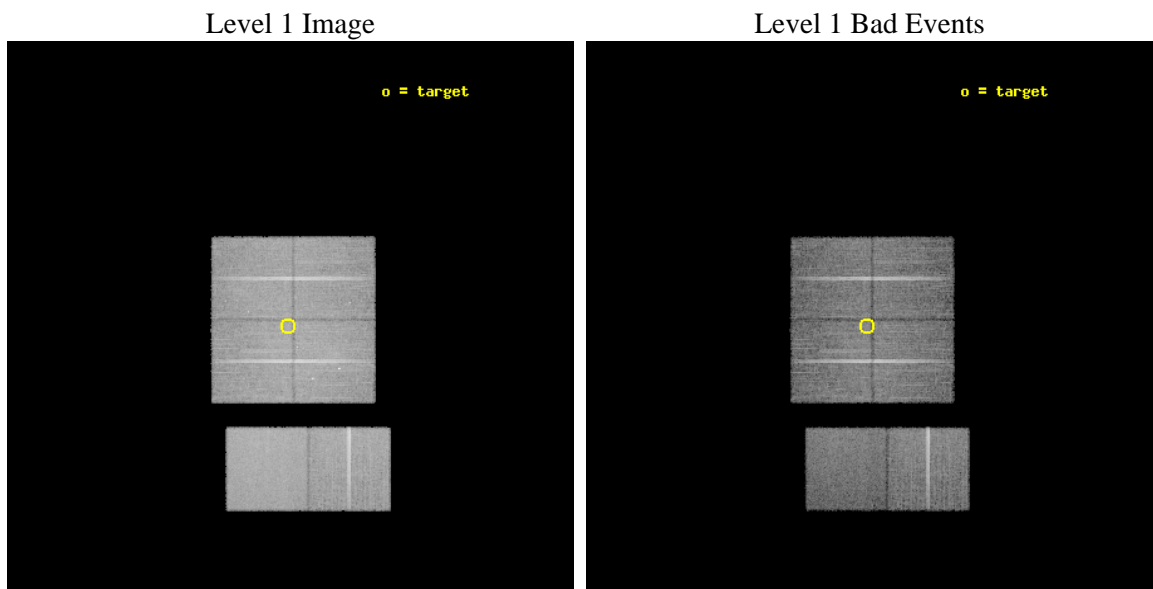
seq_num	800069	Sequence number
obs_id	893	Observation id
title	MERGING SUBSTRUCTURES IN NEARBY CLUSTERS OF GALAXIES	Proposal titl
observer	PROF. JAMES ROSE	Principal investigator
object	ABELL 3128	Source name
dtcycle	0	
cycle	P	events from which exps? Prim/Second/Both
ra_targ	52.6	Observer's specified target RA [deg]
dec_targ	-52.533333	Observer's specified target Dec [deg]
ra_nom	52.592496829297	Nominal RA [deg]
dec_nom	-52.531374995996	Nominal Dec [deg]
roll_nom	179.96616717017	Nominal Roll [deg]
revision	4	Processing version of data
ontime	19803.967639983	Sum of GTIs [s]
livetime	19553.197877208	Livetime [s]
ontime0	19803.844519988	Sum of GTIs [s]
ontime1	19803.885559991	Sum of GTIs [s]
ontime2	19803.926599994	Sum of GTIs [s]
ontime3	19803.967639983	Sum of GTIs [s]
ontime6	19804.049719989	Sum of GTIs [s]
ontime7	19804.008679986	Sum of GTIs [s]
l2events	168747	Number of level 2 events



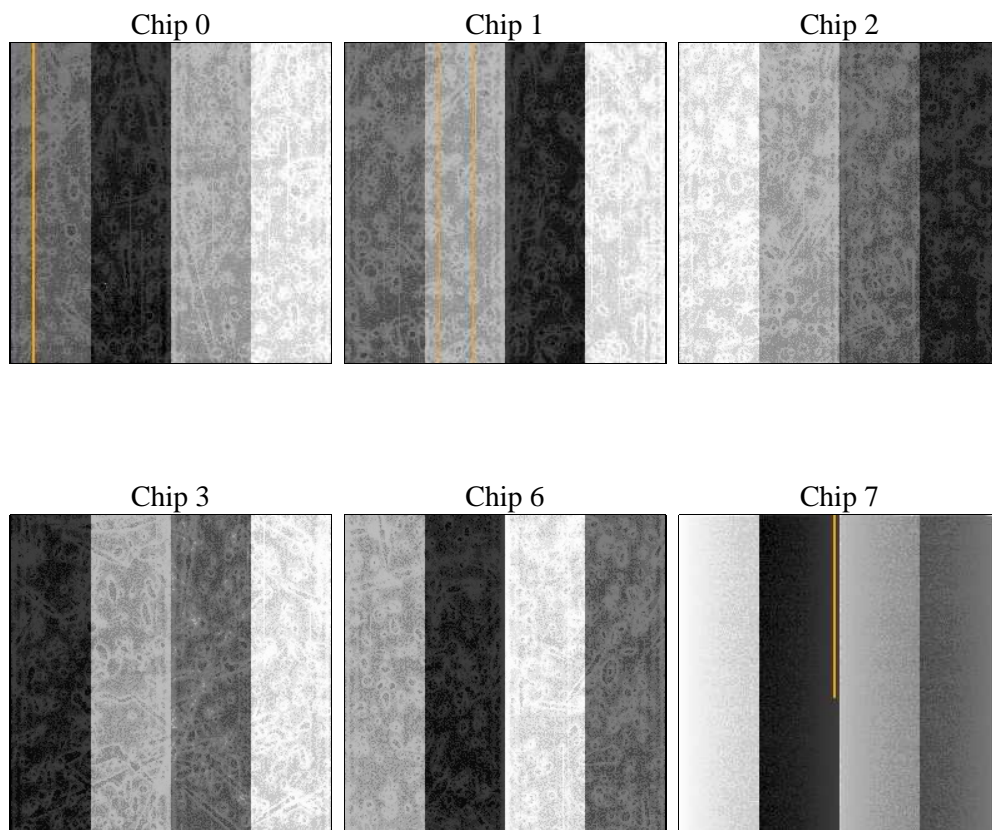
2 OBI

2.1 OBI

2.1.1 Images



2.1.2 Bias



2.1.3 Parameters

obi_num	3	Obi number	sched_exp_time	20000.000000	[s] Scheduled observation exposure time
ascdsver	8.4.5	Processing system revision	ontime	19803.967639983	Sum of GTIs [s]
caldsver	4.5.1.1	 	ontime0	19803.844519988	Sum of GTIs [s]
date	2012-08-27T19:03:38	Date and time of file creation	ontime1	19803.885559991	Sum of GTIs [s]
revision	4	Processing version of data	ontime2	19803.926599994	Sum of GTIs [s]
			ontime3	19803.967639983	Sum of GTIs [s]
			ontime6	19804.049719989	Sum of GTIs [s]
			ontime7	19804.008679986	Sum of GTIs [s]
			l1events	865971	Number of level 1 events

2.1.4 Events

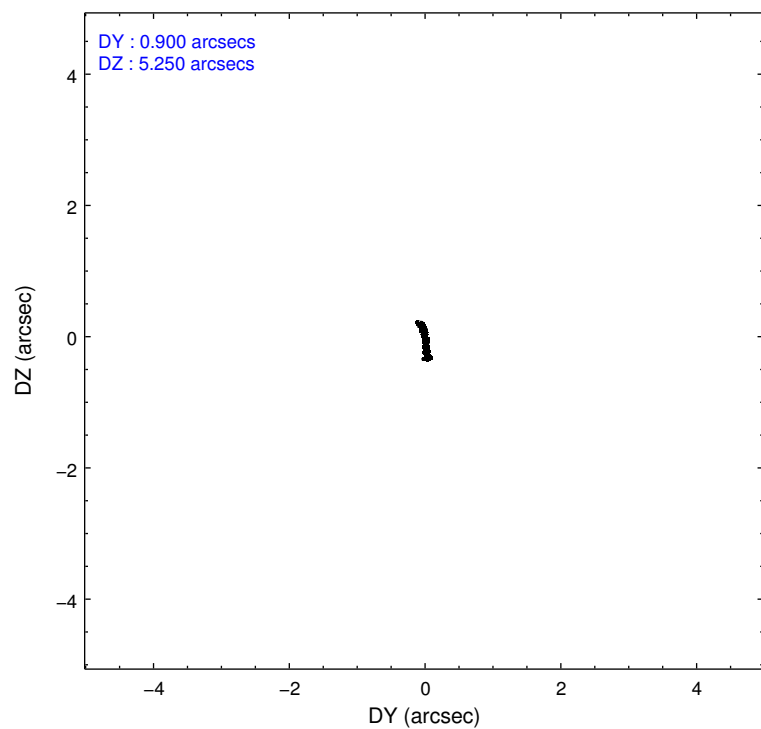
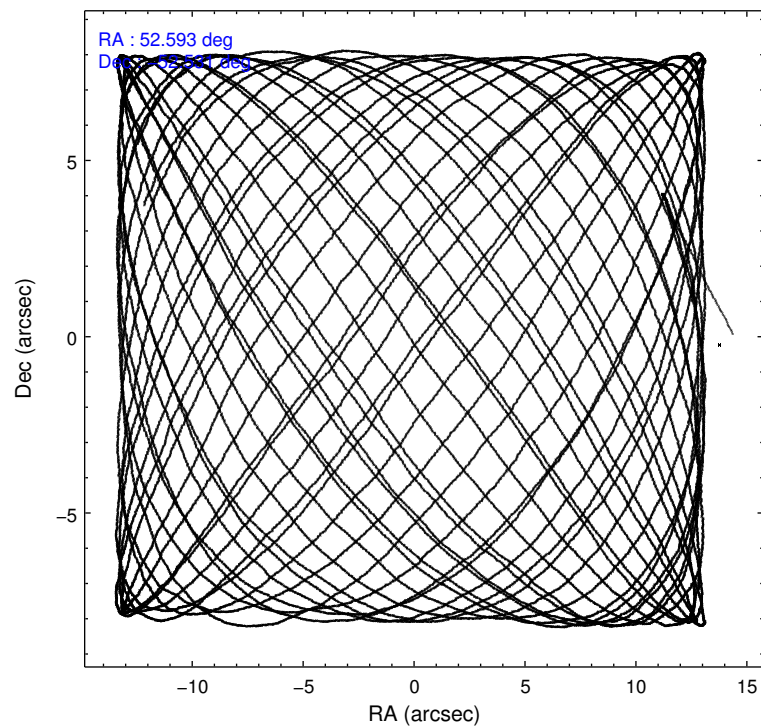
	ccd 0	ccd 1	ccd 2	ccd 3	ccd 6	ccd 7		ccd 0	ccd 1	ccd 2	ccd 3	ccd 6	ccd 7
level 1 events	128721	134283	151611	142908	145047	163401	grade 0 events	10020	15029	17800	11203	7202	7934
rejected events	109145	107971	123010	122320	128648	90843		7%	11%	11%	7%	4%	4%
rejected %	84%	80%	81%	85%	88%	55%	grade 1 events	86	90	99	85	54	150
								0%	0%	0%	0%	0%	0%
							grade 2 events	3606	4283	4476	3462	3215	14298
								2%	3%	2%	2%	2%	8%
							grade 3 events	1631	1912	1749	1563	1552	6559
								1%	1%	1%	1%	1%	4%
							grade 4 events	1533	1961	1716	1620	1489	6869
								1%	1%	1%	1%	1%	4%
							grade 5 events	4203	4685	4107	4548	5172	15289
								3%	3%	2%	3%	3%	9%
							grade 6 events	2793	3137	2867	2745	2945	36924
								2%	2%	1%	1%	2%	22%
							grade 7 events	104849	103186	118797	117682	123418	75378
								81%	76%	78%	82%	85%	46%

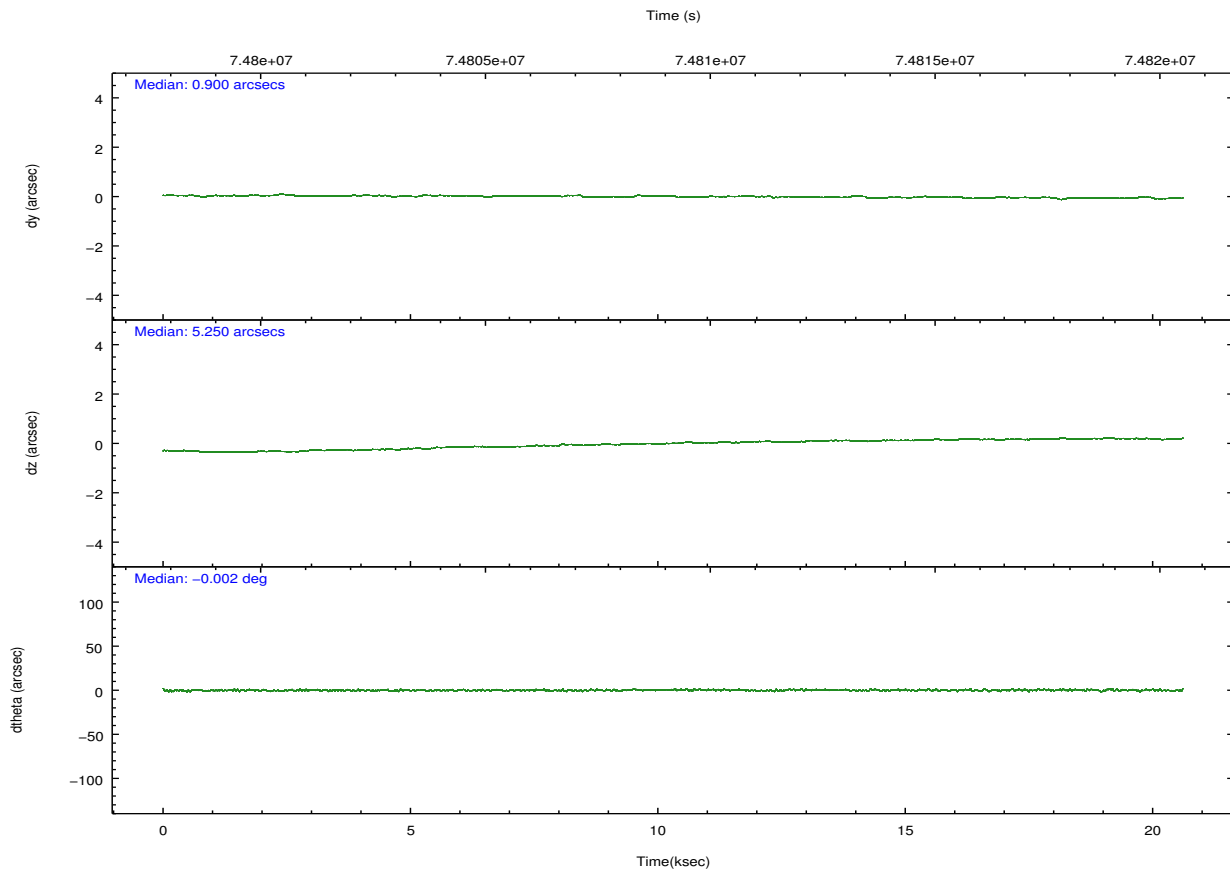
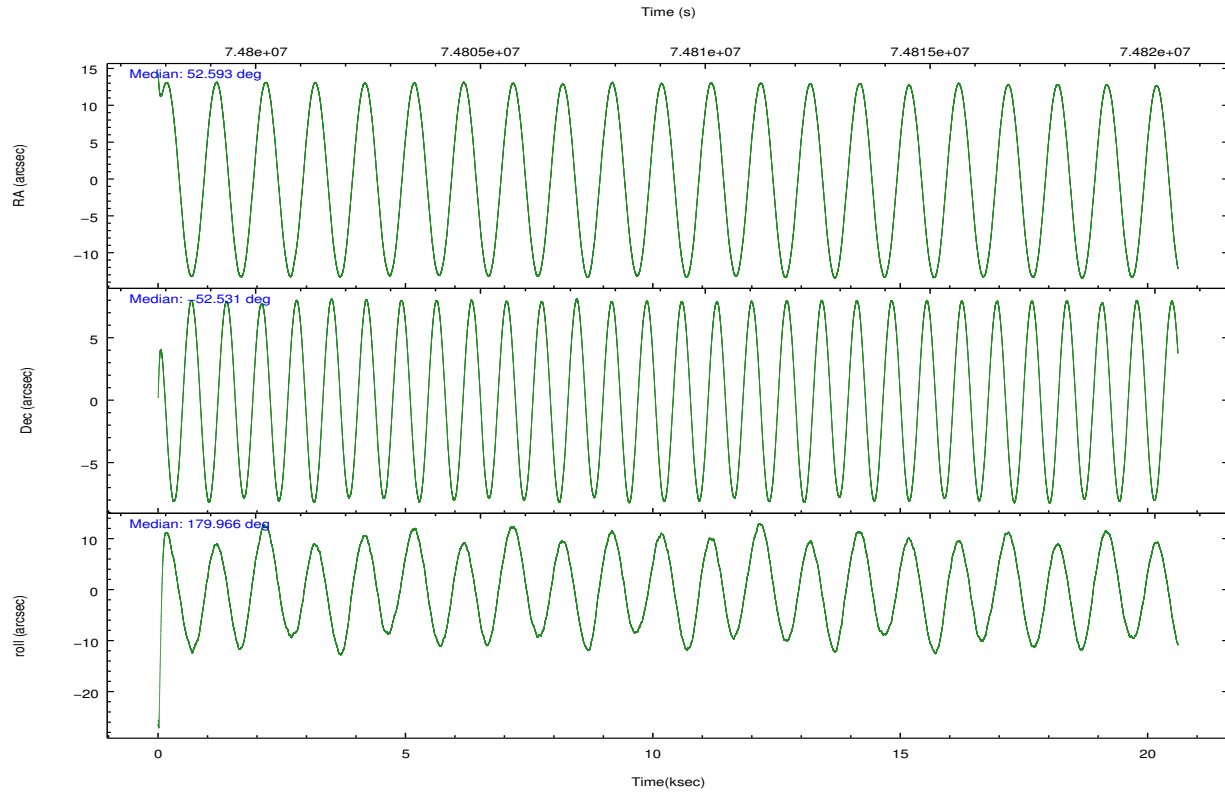
2.2 Compared Parameters

Parameter	Planned	Actual
Instrument	ACIS	ACIS
Detector	ACIS-012367	ACIS-012367
Grating	NONE	NONE
Data mode	FAINT	FAINT
Observation mode	POINTING	POINTING
[deg] Pointing RA	52.631871	52.59249682929718
[deg] Pointing Dec	-52.517744	-52.53137499599595
[deg] Pointing Roll	179.788763	179.9661671701721
[mm] SIM focus pos	-0.782348	-0.7809083437167272
[mm] SIM defocus	0	0.001439871863259334
[mm] SIM translation stage pos	-233.592463	-233.5874344608287
[mm] SIM translation stage offset	0	-0.005018542100998502
[s] Observation start time (MET)	74799476.184000	74798306.405057
Observation start date	2000-05-15T17:36:52	2000-05-15T17:18:26
[s] Observation end time (MET)	74819476.184000	74820916.880887
Observation end date	2000-05-15T23:10:12	2000-05-15T23:35:16
Read mode	TIMED	TIMED

Parameter	Planned	Actual
Obspar format version number	7	7
Obspar file type	PREDICTED	ACTUAL
Obspar update status	NONE	UPDATED
Number of optional ACIS chips dropped	0	0
On-chip summing requested	N	N
Subarray requested	NONE	NONE
Alternating exposures requested	N	N
[s] Primary exposure time	0.000000	3.2

2.3 Aspect



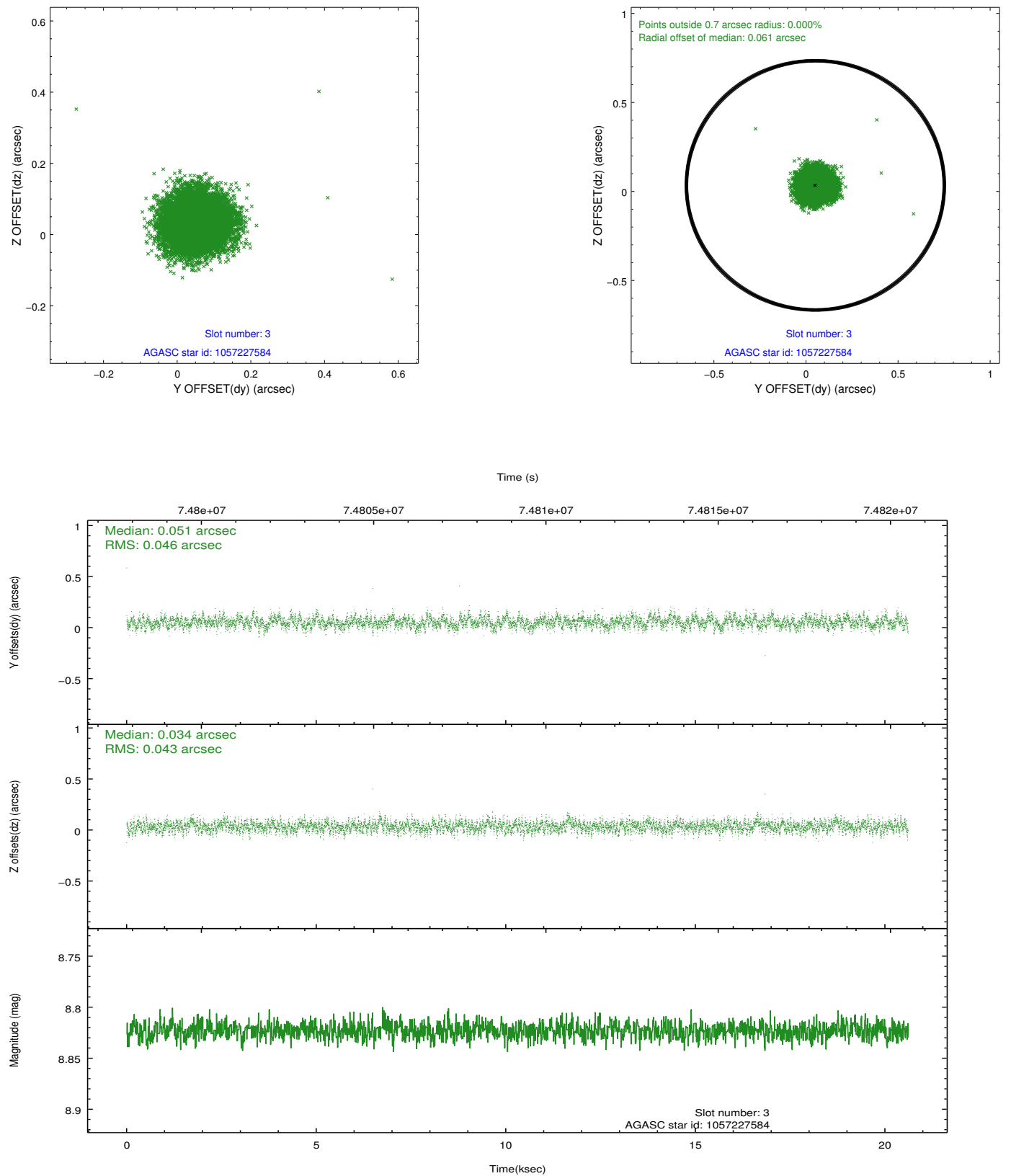


Slot Statistics

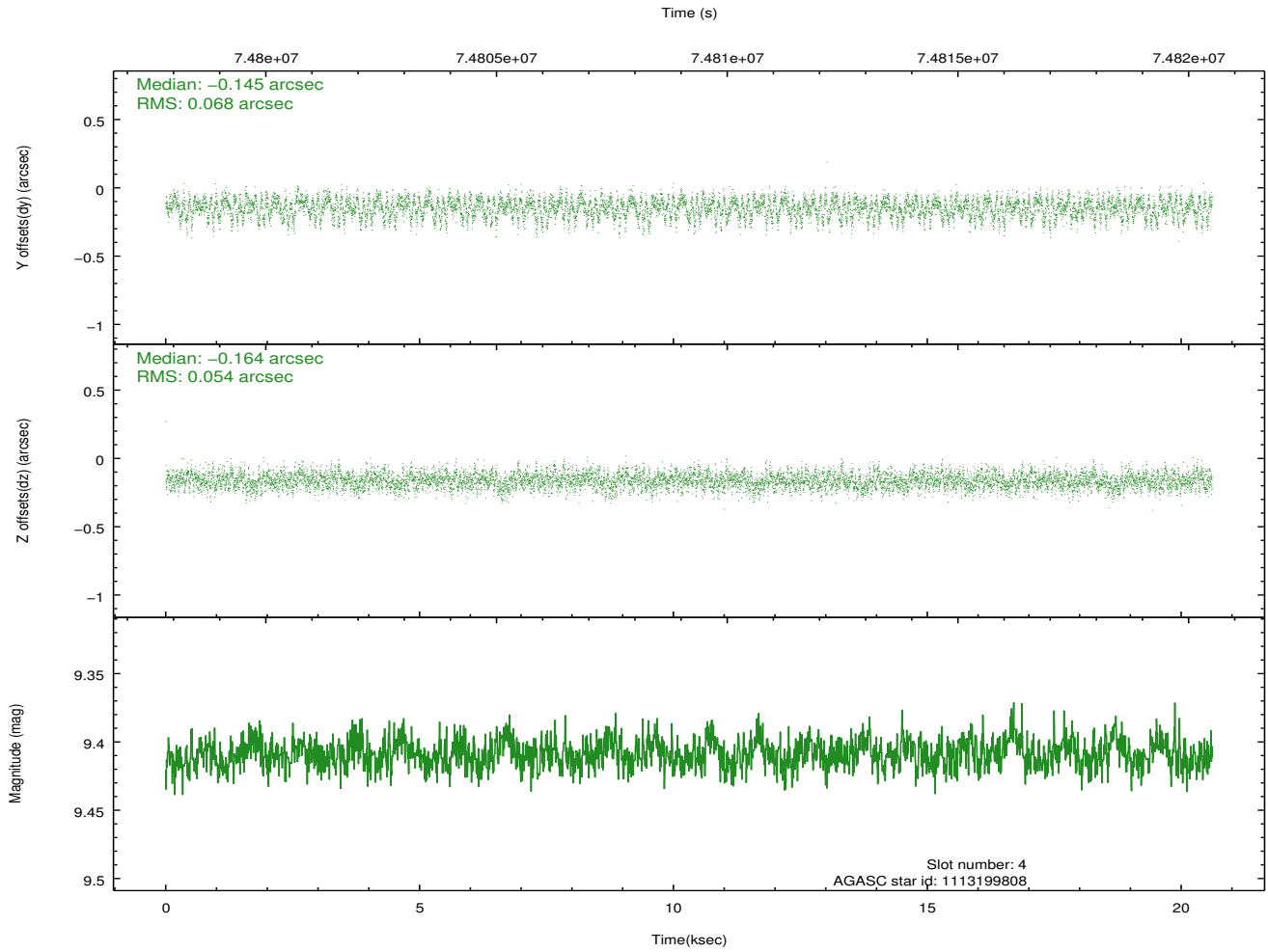
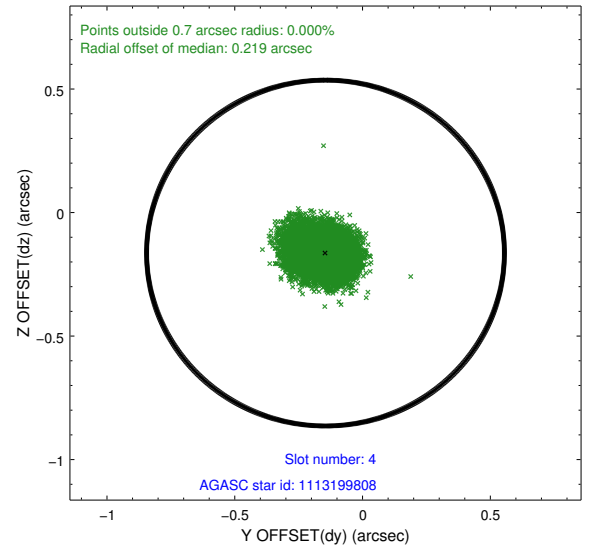
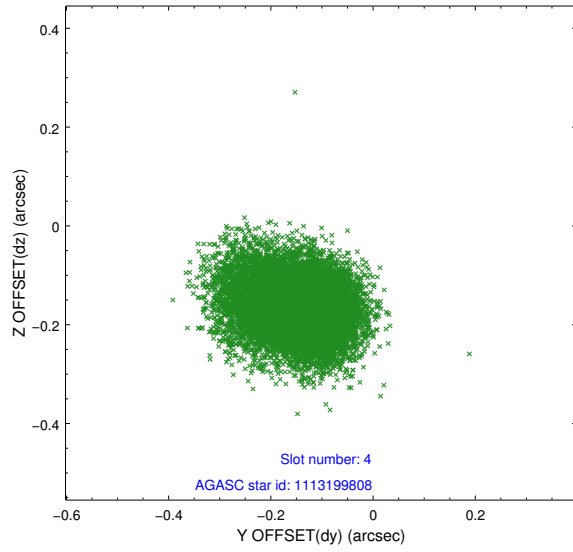
slot	status	id	mag	n_pts	med_dy	med_dz	dr1	dr2	ra	dec	mean_y	mean_z
0	BAD	ACIS-I-2	7.15	2871	0.003	-0.023	0.016	0.027	0.000000	0.000000	-755.25	-834.81
1	FID	ACIS-I-4	7.19	5027	-0.043	0.021	0.007	0.012	0.000000	0.000000	2158.73	1071.16
2	FID	ACIS-I-5	7.23	5026	-0.026	0.026	0.007	0.012	0.000000	0.000000	-1808.83	1069.25
3	GUIDE	1057227584	8.82	10055	0.051	0.034	0.067	0.107	53.623876	-52.123844	-2186.36	-1411.02
4	GUIDE	1113199808	9.41	10051	-0.145	-0.164	0.092	0.149	52.027175	-53.115673	1299.21	2162.70
5	GUIDE	1057227080	10.30	9972	0.119	0.094	0.121	0.194	53.629808	-52.369523	-2190.27	-526.16
6	GUIDE	1057100856	9.80	10042	-0.021	0.036	0.086	0.142	52.122332	-52.361156	1122.96	-555.53
7	UNUSED		0.00	0	0.000	0.000	0.000	0.000	0.000000	0.000000	0.00	0.00

2.4 Star Slots

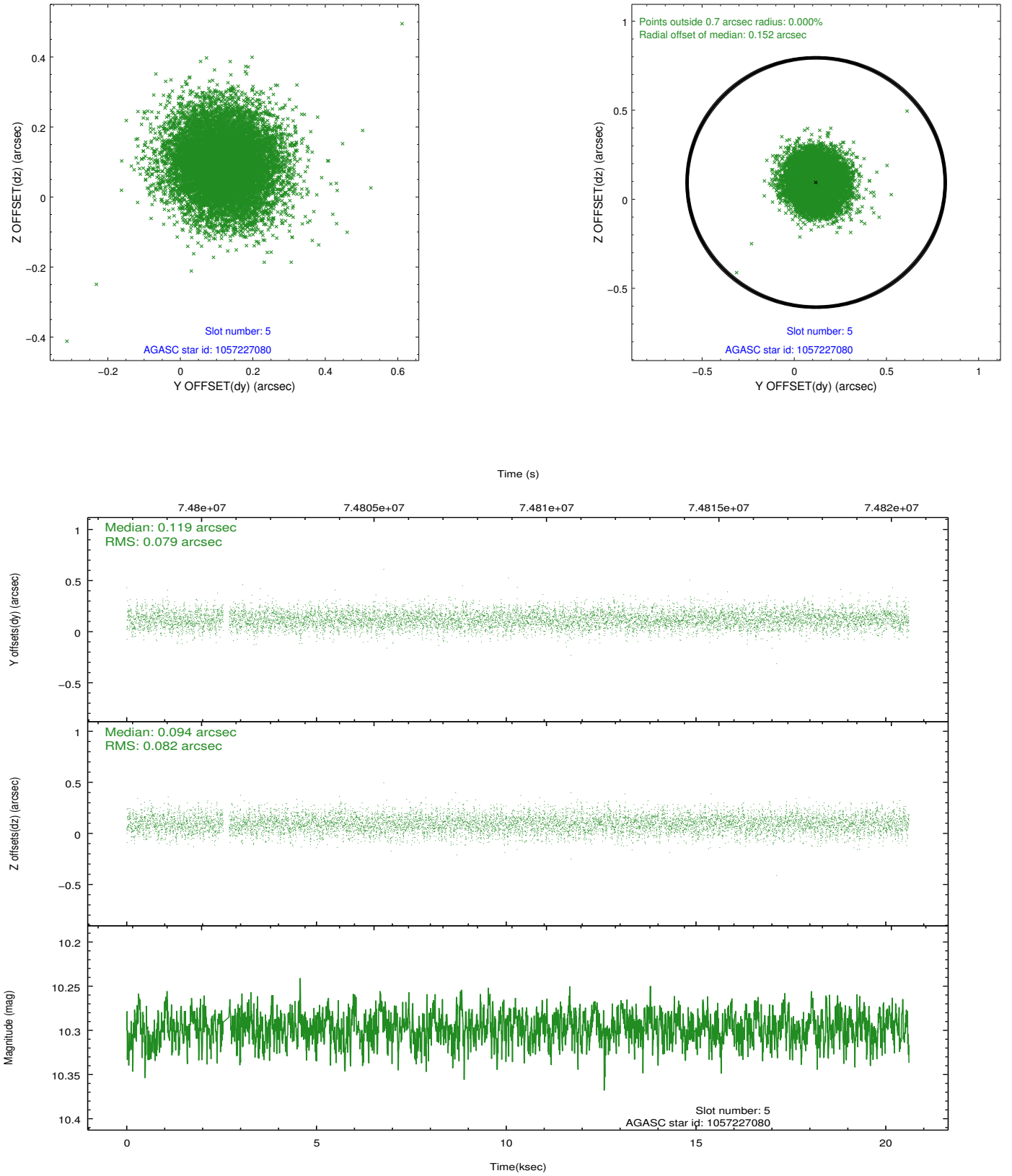
2.4.1 Slot 3



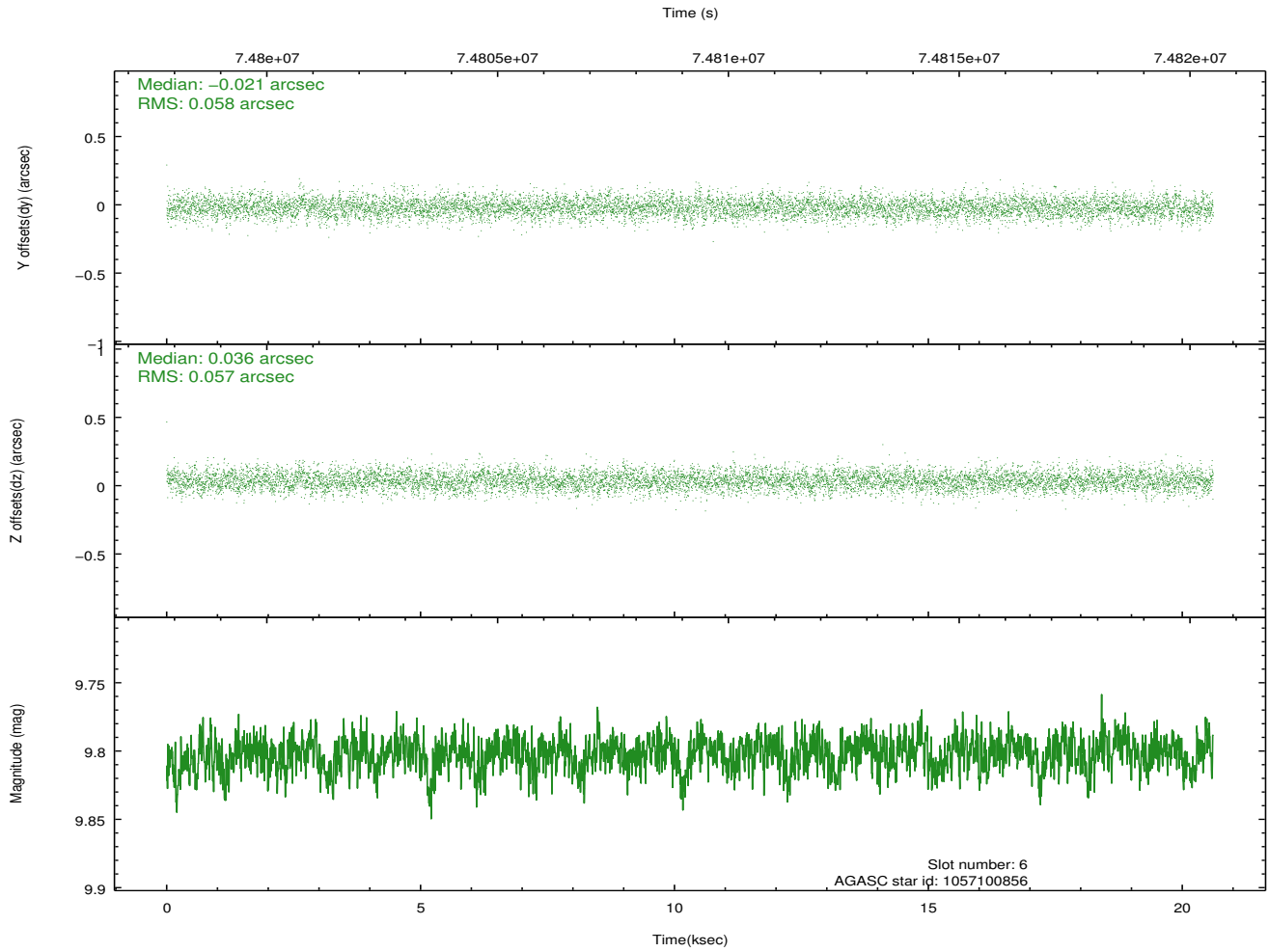
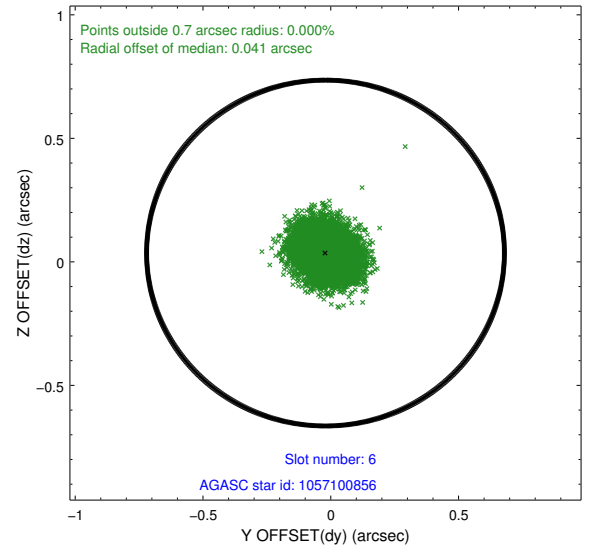
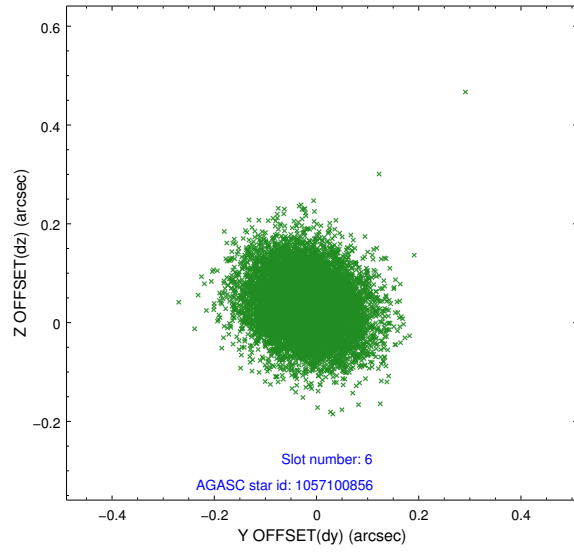
2.4.2 Slot 4



2.4.3 Slot 5

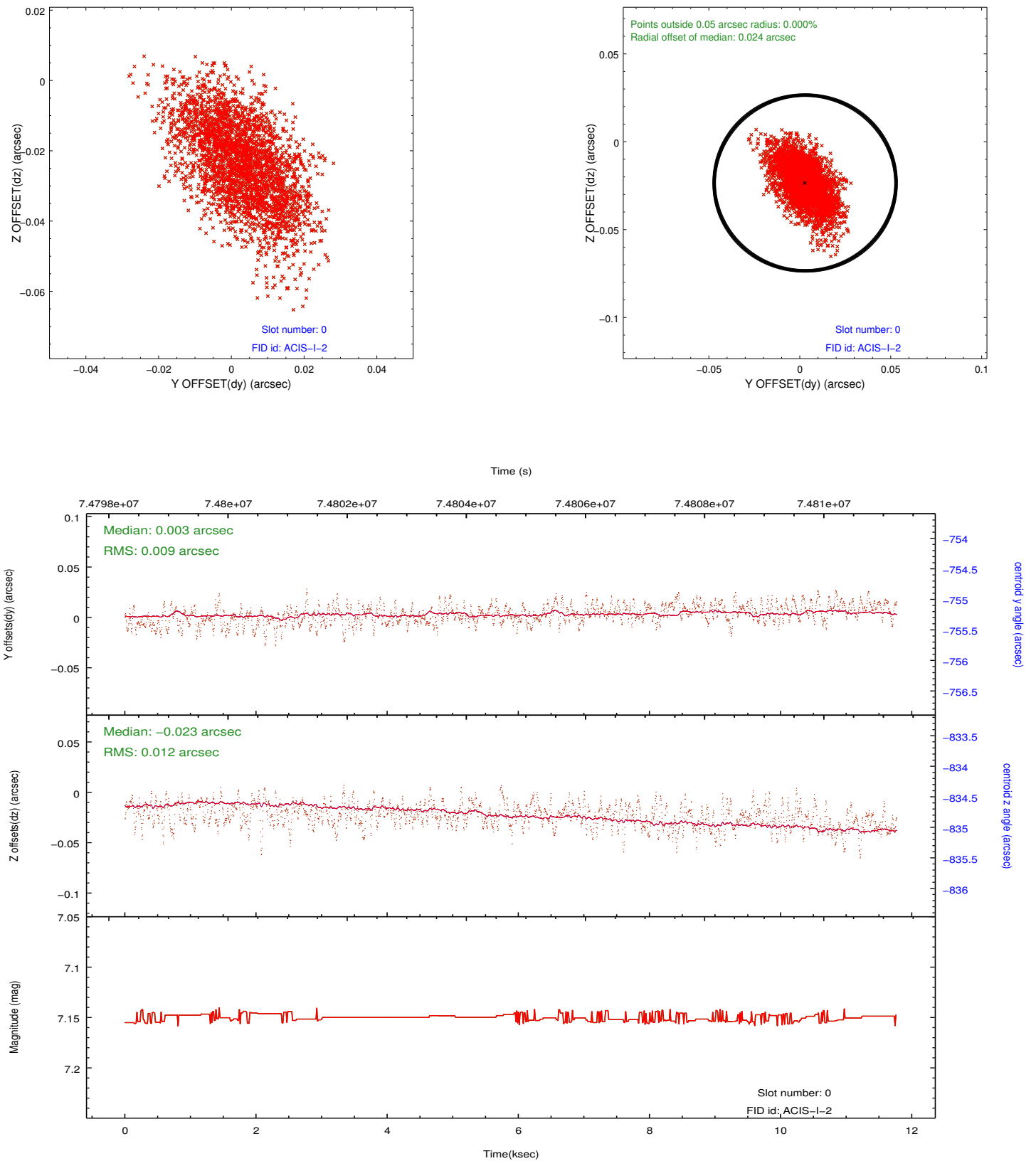


2.4.4 Slot 6

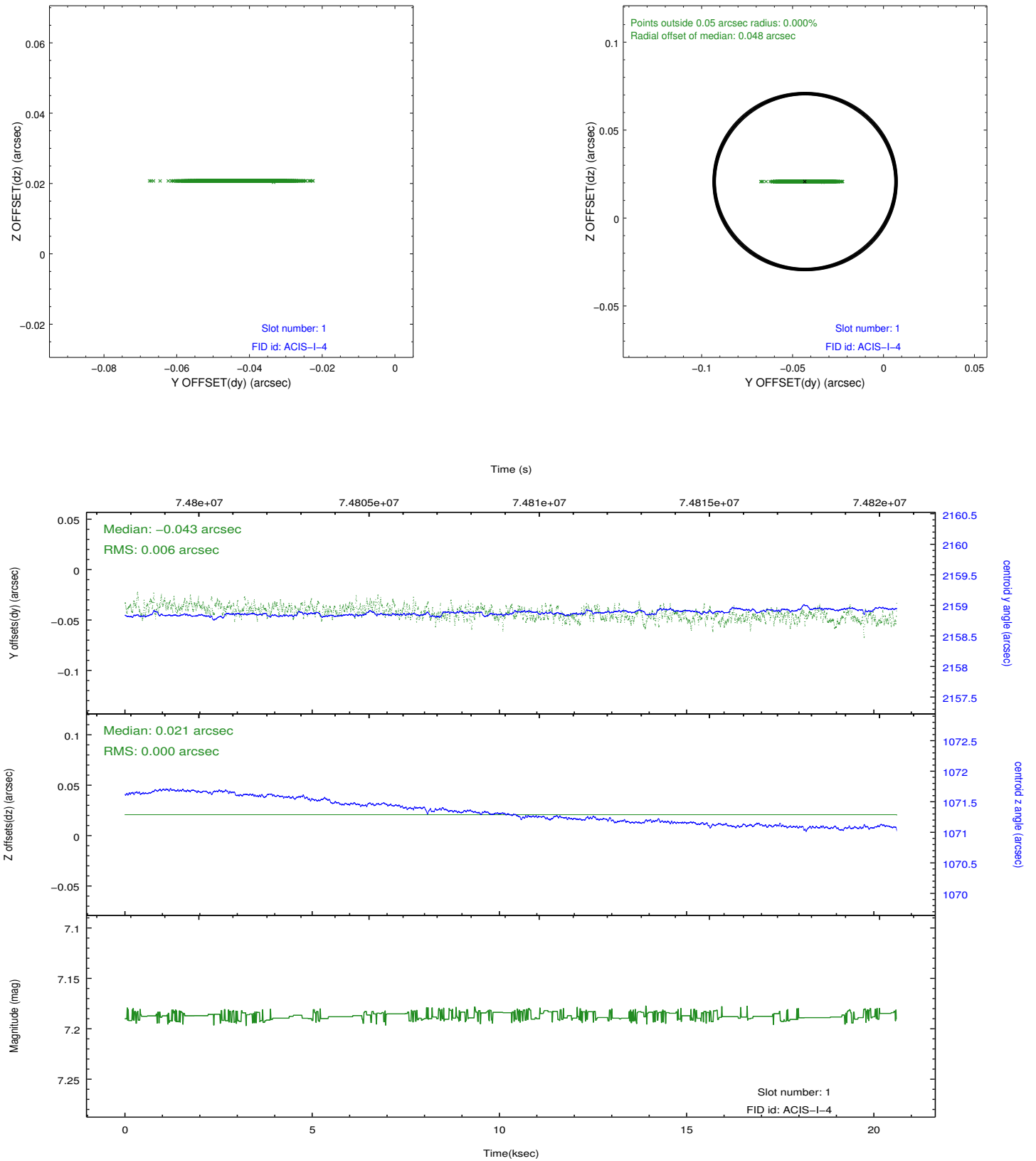


2.5 FID Slots

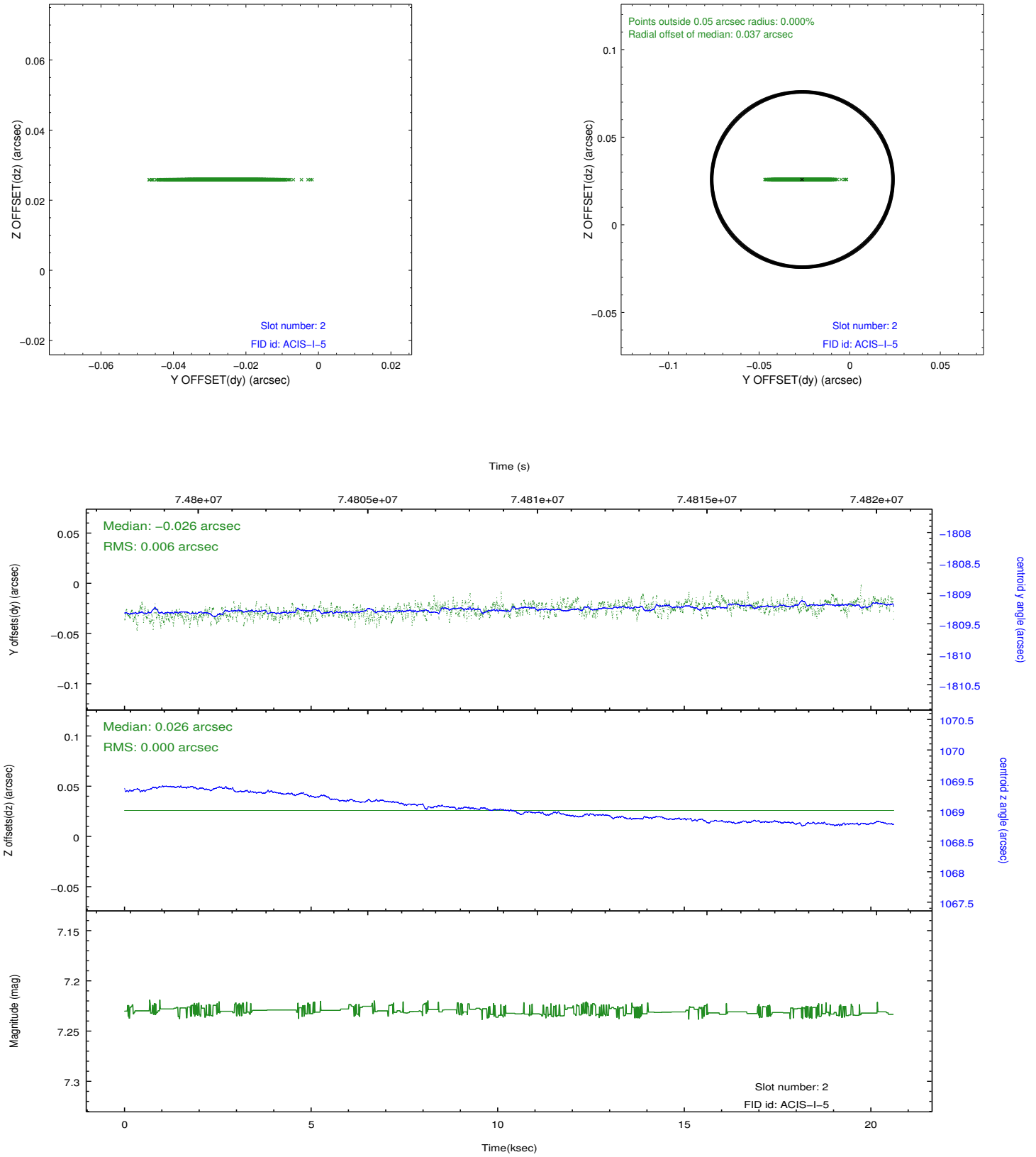
2.5.1 Slot 0



2.5.2 Slot 1



2.5.3 Slot 2



A Summary

A.1 Status

V&V Scientist	Beth Sundheim
V&V Date (YYYY-MM-DD)	2012.08.29
V&V Edition	1
V&V Disposition and Status	OK
V&V Charge Time	19.763

A.2 Comments

Charge time for this observation remains at previous value of 19.763 ksec.

Slot 7 was not utilized in this observation.