

V&V Reference Report

L2 ASCDS Version : 8.4.4

Observation 8913 - L2 Version 2
Chandra X-Ray Center

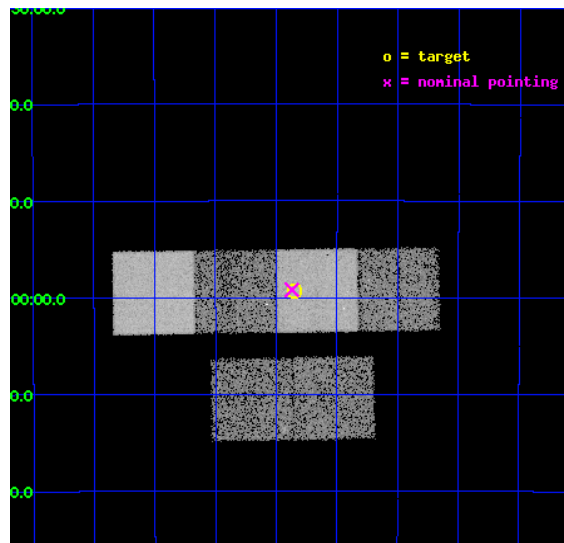
L2 Processing Date : May 11 2012

Contents

1	Front	2
2	OBI	3
2.1	OBI	3
2.1.1	Images	3
2.1.2	Bias	3
2.1.3	Parameters	4
2.1.4	Events	4
2.2	Compared Parameters	5
2.3	Aspect	6
2.4	Star Slots	9
2.4.1	Slot 3	9
2.4.2	Slot 4	10
2.4.3	Slot 5	11
2.4.4	Slot 6	12
2.4.5	Slot 7	13
2.5	FID Slots	14
2.5.1	Slot 0	14
2.5.2	Slot 1	15
2.5.3	Slot 2	16
A	Summary	17
A.1	Status	17
A.2	Comments	17

1 Front

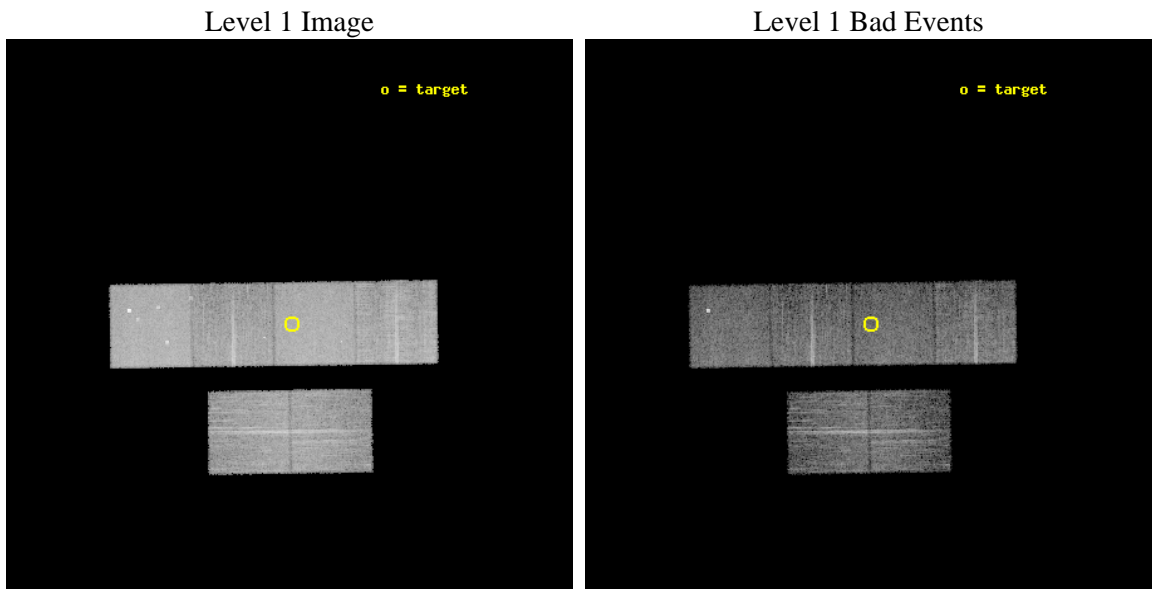
seq_num	200494	Sequence number
obs_id	8913	Observation id
title	Search for X-Ray Emission from TW Hya Association Brown Dwarfs	Pro
observer	Dr. JOHN GIZIS	Principal investigator
object	2MASSW J1139511-315921	Source name
dtcycle	0	
cycle	P	events from which exps? Prim/Second/Both
ra_targ	174.962917	Observer's specified target RA [deg]
dec_targ	-31.989167	Observer's specified target Dec [deg]
ra_nom	174.96779800399	Nominal RA [deg]
dec_nom	-31.986649767741	Nominal Dec [deg]
roll_nom	359.15919778449	Nominal Roll [deg]
revision	2	Processing version of data
ontime	7059.199973762	Sum of GTIs [s]
livetime	6969.8121331543	Livetime [s]
ontime2	7059.199973762	Sum of GTIs [s]
ontime3	7059.199973762	Sum of GTIs [s]
ontime5	7059.199973762	Sum of GTIs [s]
ontime6	7059.199973762	Sum of GTIs [s]
ontime7	7059.199973762	Sum of GTIs [s]
ontime8	7059.199973762	Sum of GTIs [s]
l2events	114166	Number of level 2 events



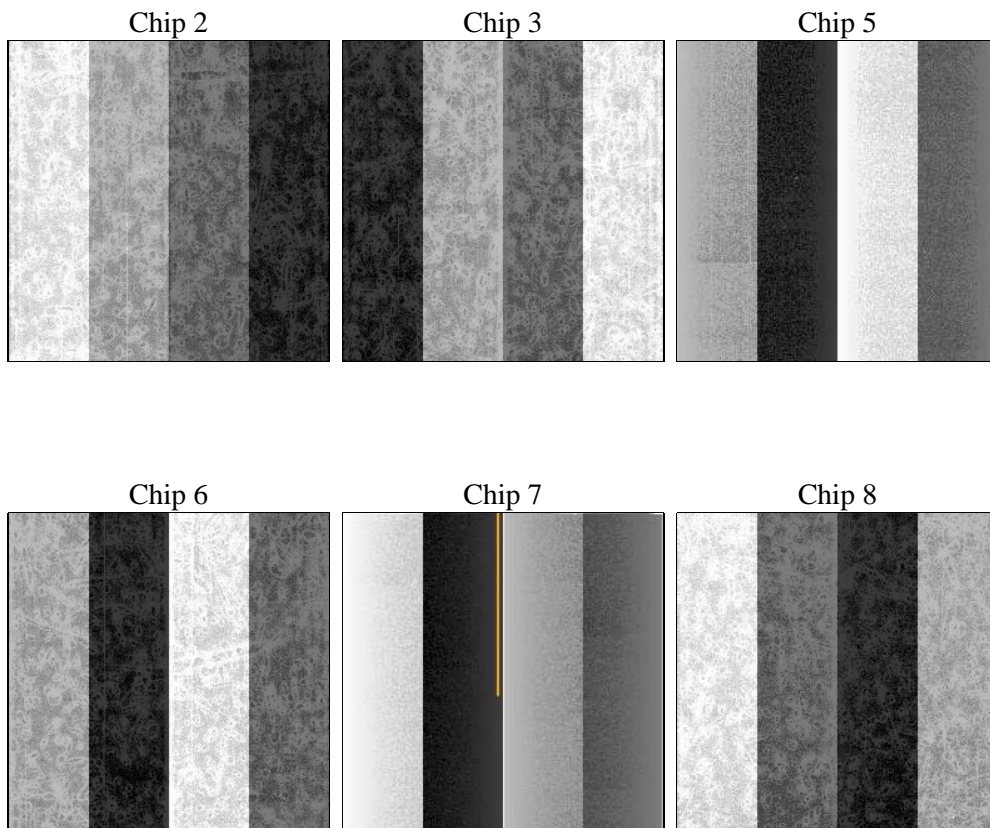
2 OBI

2.1 OBI

2.1.1 Images



2.1.2 Bias



2.1.3 Parameters

obi_num	0	Obi number	sched_exp_time	6913.286000	[s] Scheduled observation exposure time
ascdsver	8.4.4	Processing system revision	ontime	7059.199973762	Sum of GTIs [s]
caldsver	4.4.9	 	ontime2	7059.199973762	Sum of GTIs [s]
date	2012-05-11T13:00:41	Date and time of file creation	ontime3	7059.199973762	Sum of GTIs [s]
revision	2	Processing version of data	ontime5	7059.199973762	Sum of GTIs [s]
			ontime6	7059.199973762	Sum of GTIs [s]
			ontime7	7059.199973762	Sum of GTIs [s]
			ontime8	7059.199973762	Sum of GTIs [s]
			l1events	500457	Number of level 1 events

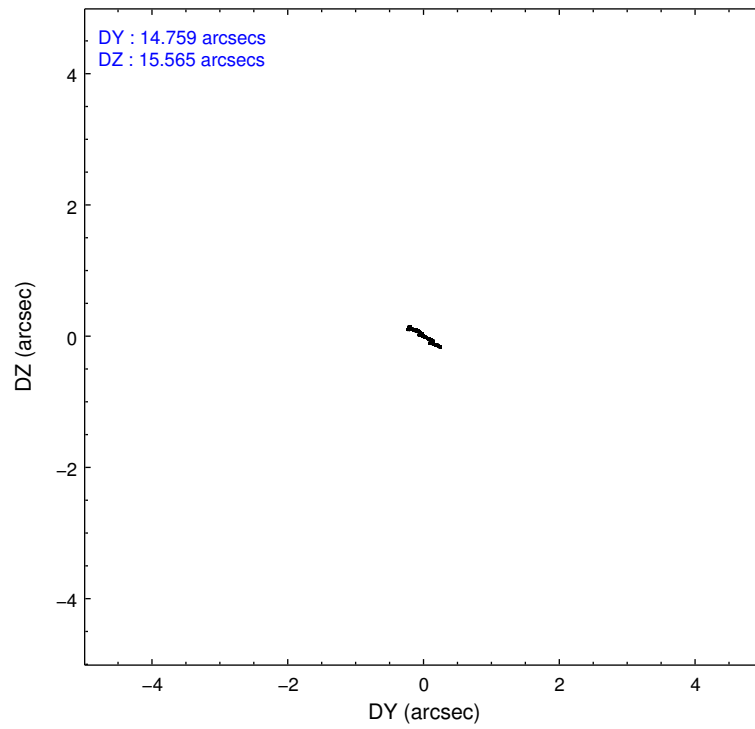
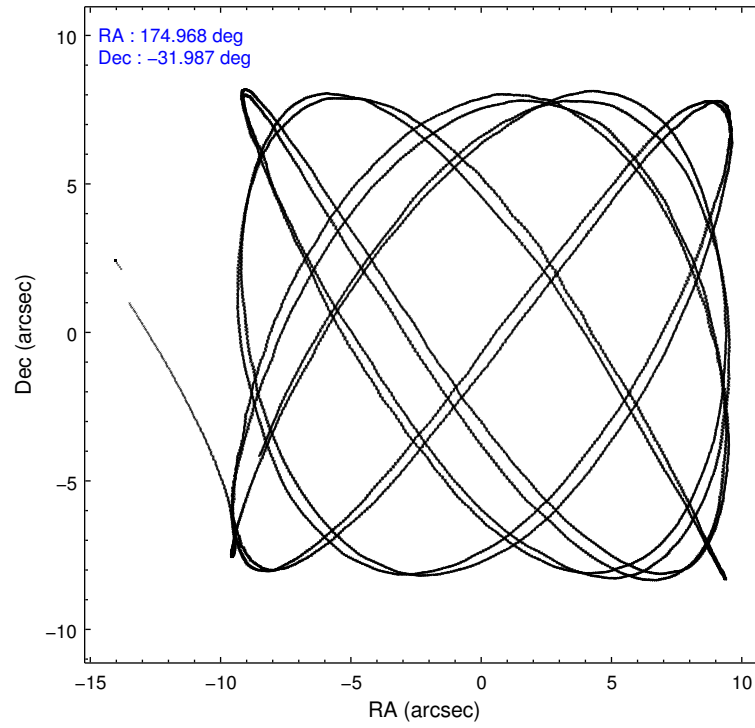
2.1.4 Events

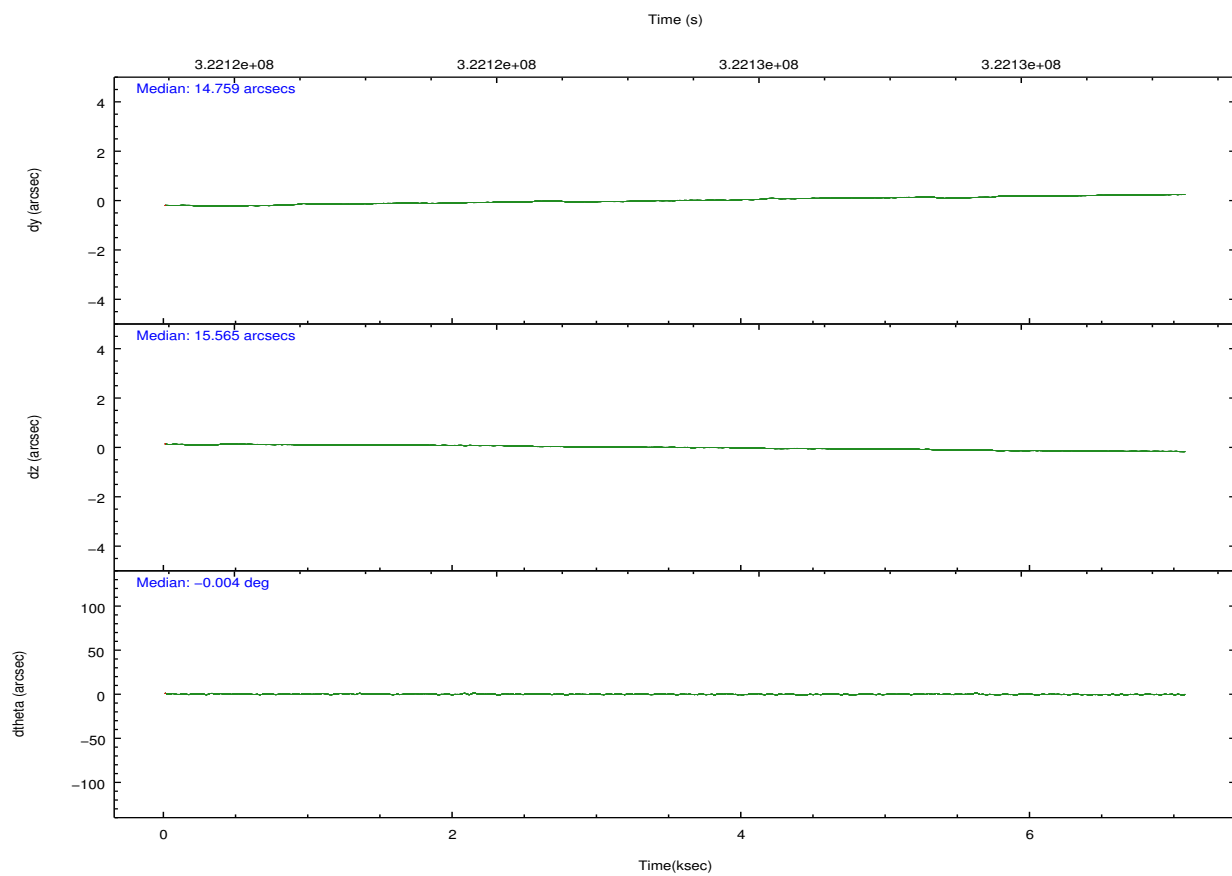
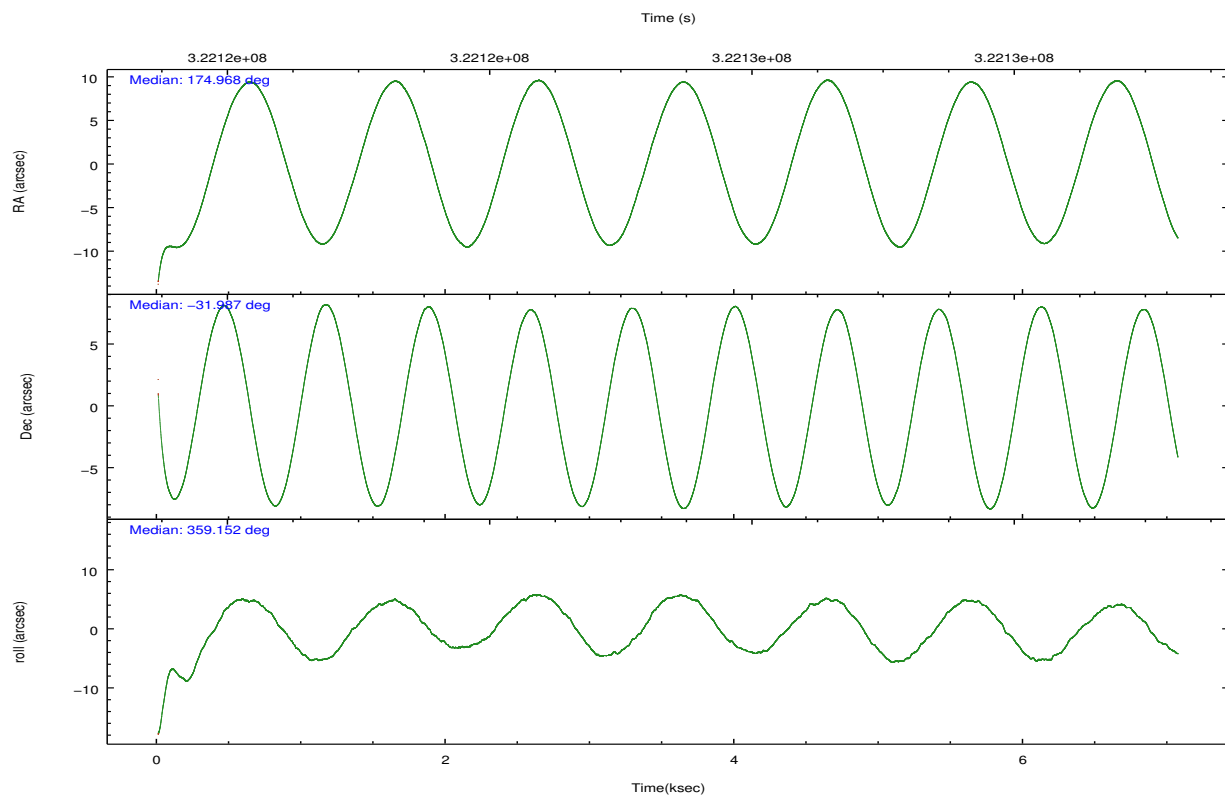
	ccd 2	ccd 3	ccd 5	ccd 6	ccd 7	ccd 8		ccd 2	ccd 3	ccd 5	ccd 6	ccd 7	ccd 8
level 1 events	70233	64131	109122	70499	96478	89994	grade 0 events	3751	3639	4605	3592	3568	6648
rejected events	61910	56062	60433	61855	56772	69044		5%	5%	4%	5%	3%	7%
rejected %	88%	87%	55%	87%	58%	76%	grade 1 events	53	54	155	41	97	67
								0%	0%	0%	0%	0%	0%
							grade 2 events	1815	1564	15562	1921	8262	4717
								2%	2%	14%	2%	8%	5%
							grade 3 events	790	802	1692	802	3456	2252
								1%	1%	1%	1%	3%	2%
							grade 4 events	720	777	1653	771	3309	2182
								1%	1%	1%	1%	3%	2%
							grade 5 events	2723	3077	8265	3251	9109	4273
								3%	4%	7%	4%	9%	4%
							grade 6 events	1406	1433	26086	1714	21837	5536
								2%	2%	23%	2%	22%	6%
							grade 7 events	58975	52785	51104	58407	46840	64319
								83%	82%	46%	82%	48%	71%

2.2 Compared Parameters

Parameter	Planned	Actual	Parameter	Planned	Actual
Instrument	ACIS	ACIS	Obspar format version number	7	7
Detector	ACIS-235678	ACIS-235678	Obspar file type	PREDICTED	ACTUAL
Grating	NONE	NONE	Obspar update status	NONE	UPDATED
Data mode	FAINT	FAINT	CCD I0 on	N	N
Observation mode	POINTING	POINTING	CCD I1 on	N	N
[deg] Pointing RA	174.939884	174.9677980039899	CCD I2 on	O1	Y
[deg] Pointing Dec	-32.000330	-31.98664976774101	CCD I3 on	O2	Y
[deg] Pointing Roll	358.987799	359.1591977844889	CCD S0 on	N	N
[mm] SIM focus pos	-0.684267	-0.6828225247311905	CCD S1 on	Y	Y
[mm] SIM defocus	0	0.001444936568705701	CCD S2 on	Y	Y
[mm] SIM translation stage pos	-190.132523	-190.1425803651734	CCD S3 on	Y	Y
[mm] SIM translation stage offset	0	0.01005778216563158	CCD S4 on	Y	Y
[s] Observation start time (MET)	322121988.184000	322120864.93504	CCD S5 on	N	N
Observation start date	2008-03-17T06:18:43	2008-03-17T06:01:04	Number of optional ACIS chips dropped	0	0
[s] Observation end time (MET)	322128901.184000	322129127.97294	On-chip summing requested	N	N
Observation end date	2008-03-17T08:13:56	2008-03-17T08:18:47	Subarray requested	NONE	NONE
Read mode	TIMED	TIMED	Alternating exposures requested	N	N
			[s] Primary exposure time	0.000000	3.2

2.3 Aspect



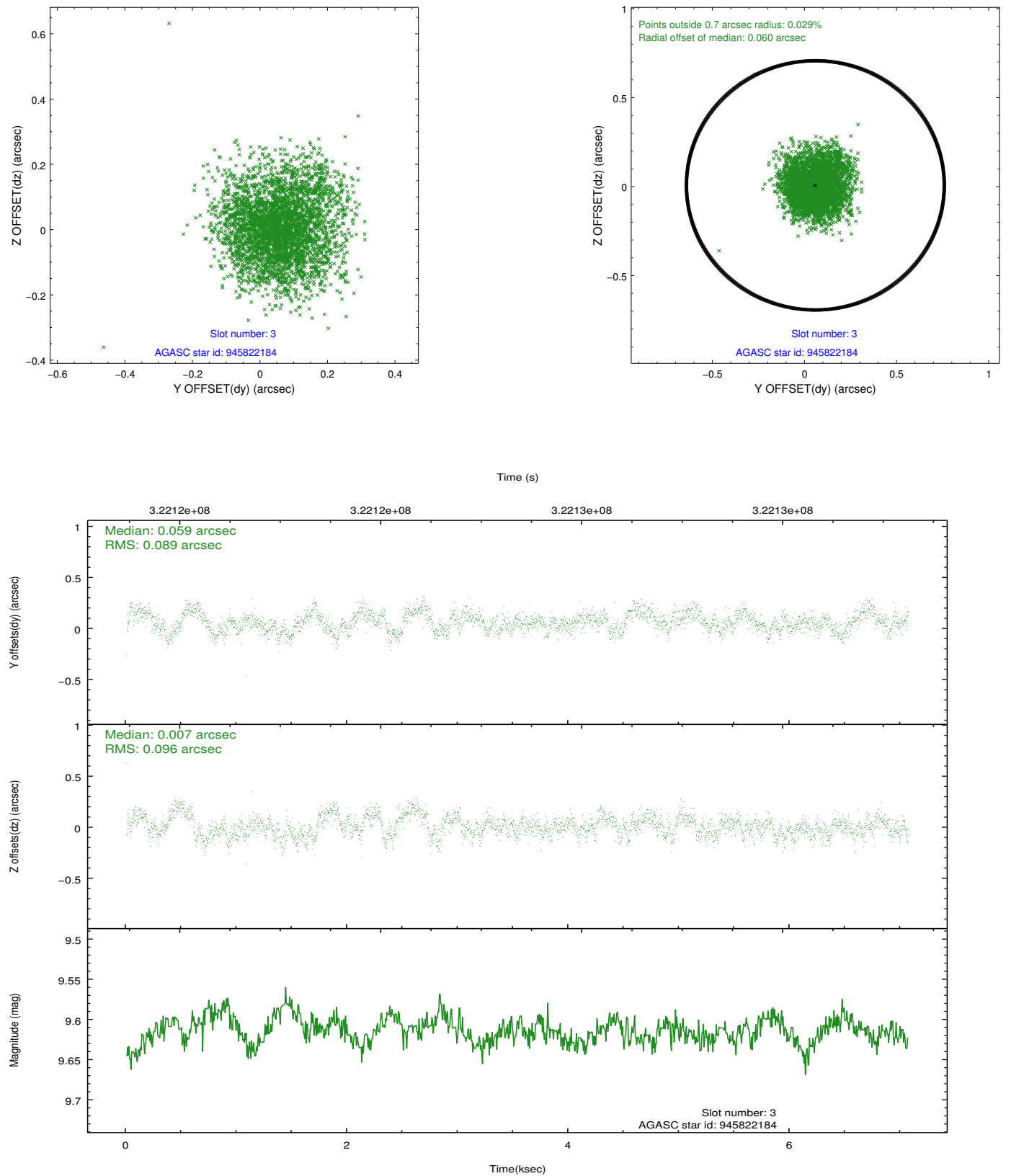


Slot Statistics

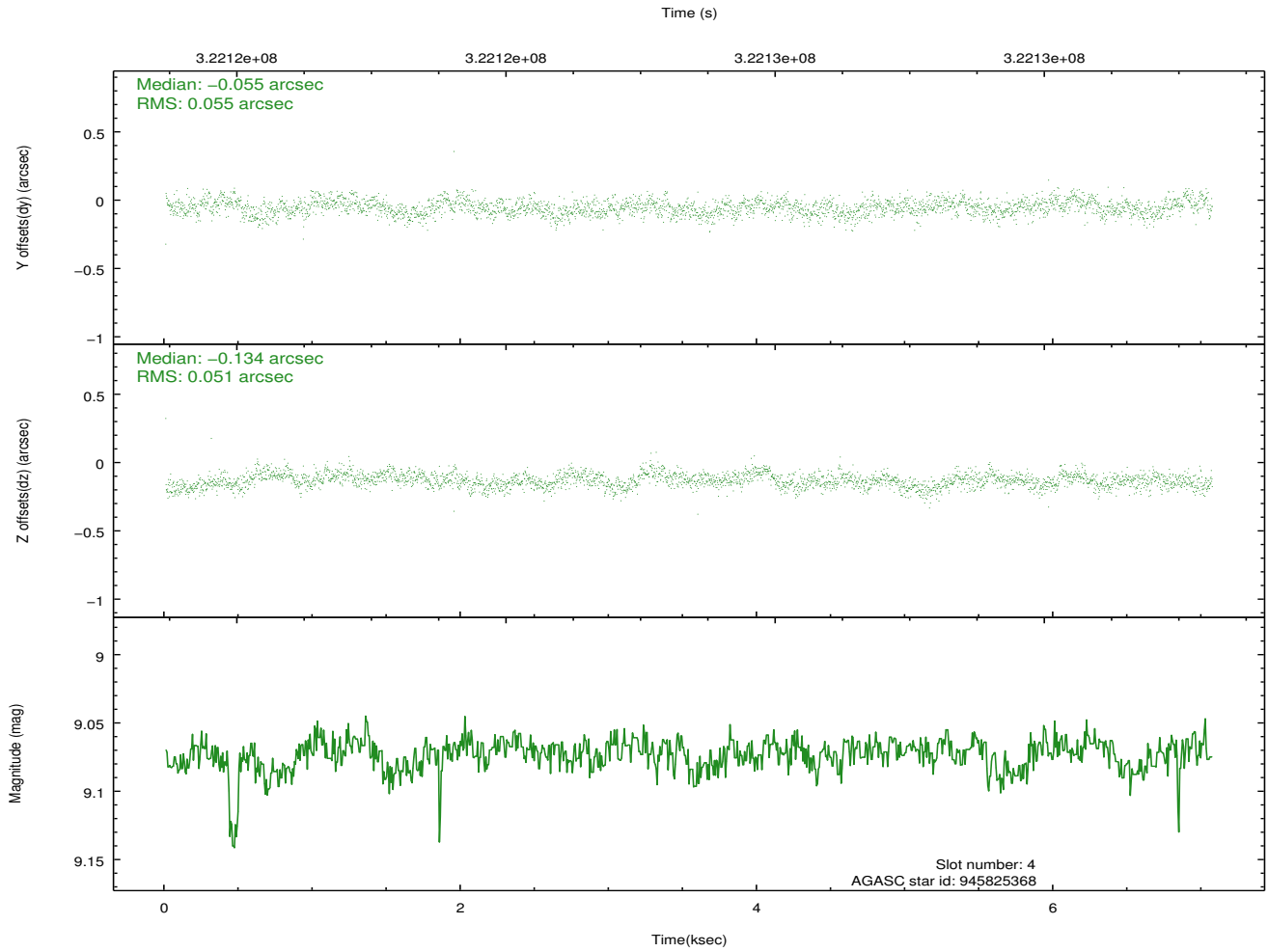
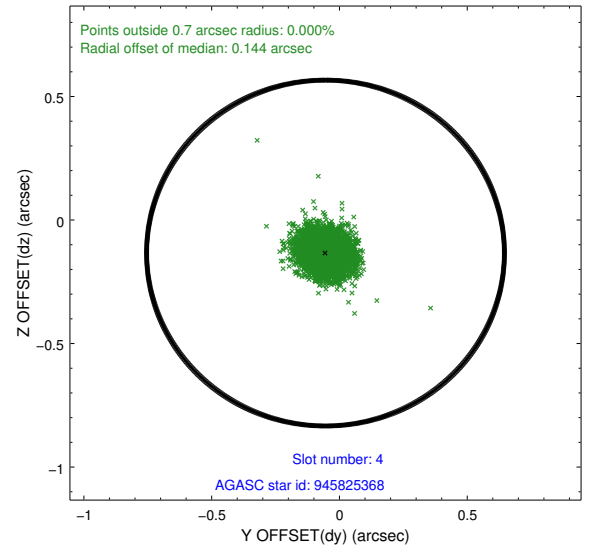
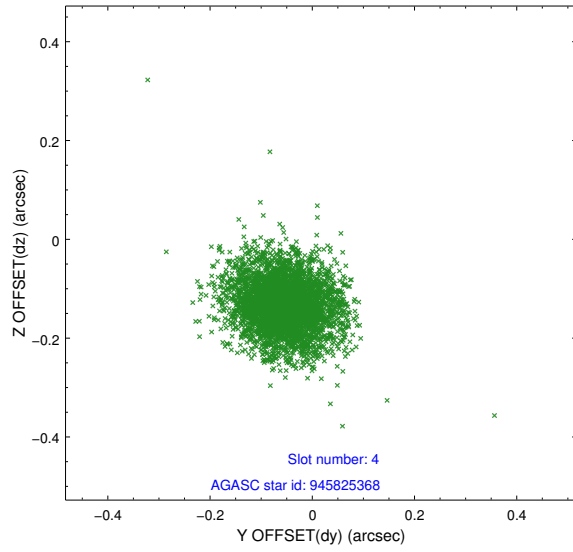
slot	status	id	mag	n_pts	med_dy	med_dz	dr1	dr2	ra	dec	mean_y	mean_z
0	FID	ACIS-S-2	7.09	1724	-0.097	-0.029	0.010	0.016	0.000000	0.000000	-767.82	-1736.93
1	FID	ACIS-S-4	7.19	1724	0.210	0.055	0.012	0.024	0.000000	0.000000	2145.38	170.80
2	FID	ACIS-S-5	7.22	1723	-0.144	-0.017	0.015	0.026	0.000000	0.000000	-1819.67	165.30
3	GUIDE	945822184	9.61	3436	0.059	0.007	0.142	0.222	174.928936	-31.558746	-61.52	1589.02
4	GUIDE	945825368	9.07	3445	-0.055	-0.134	0.078	0.127	174.226141	-31.754352	-2199.92	839.84
5	GUIDE	946340000	8.42	3446	-0.191	0.046	0.070	0.114	175.464776	-32.554870	1627.55	-1971.20
6	GUIDE	946341392	8.18	3445	0.075	0.063	0.082	0.129	174.236848	-32.481992	-2103.14	-1779.69
7	GUIDE	946340064	9.63	3416	0.121	0.013	0.117	0.184	175.294222	-32.143633	1088.74	-498.65

2.4 Star Slots

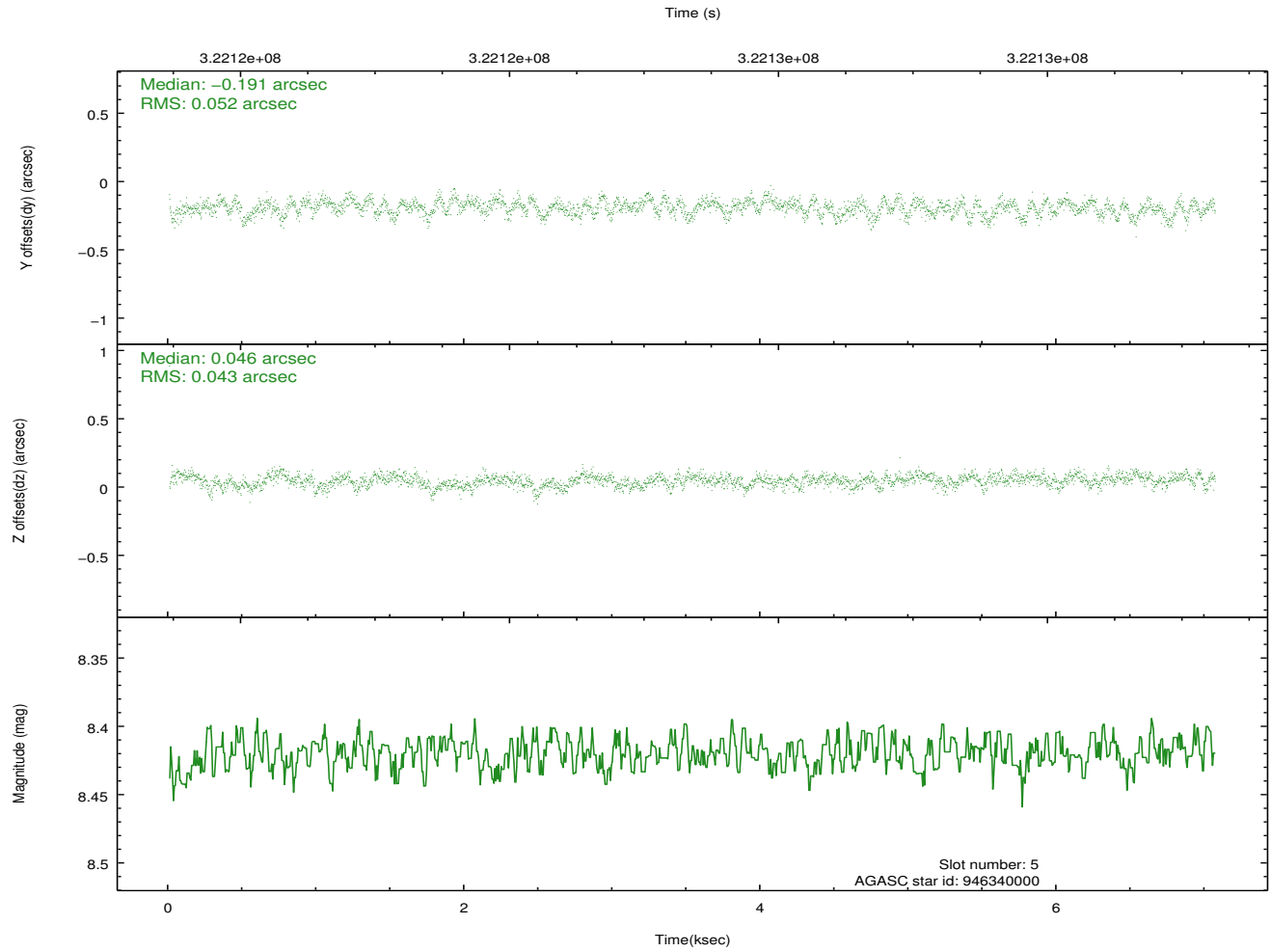
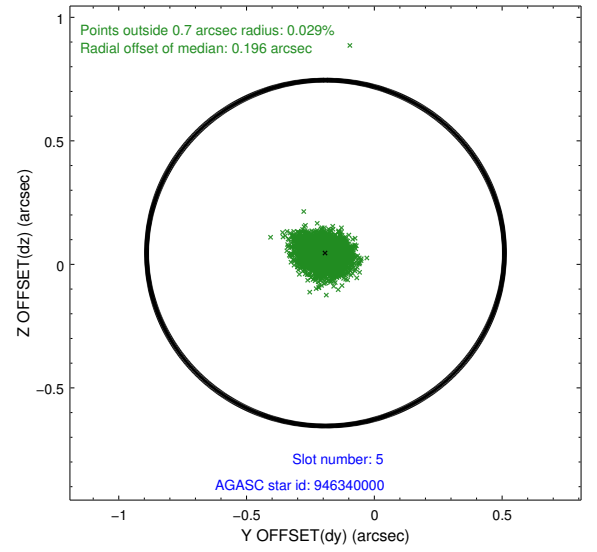
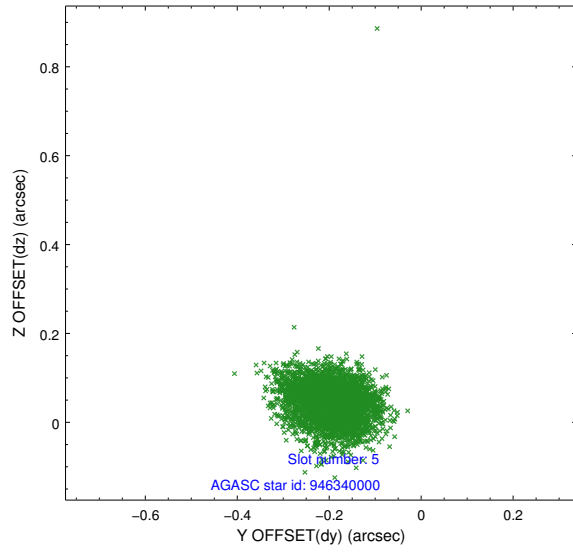
2.4.1 Slot 3



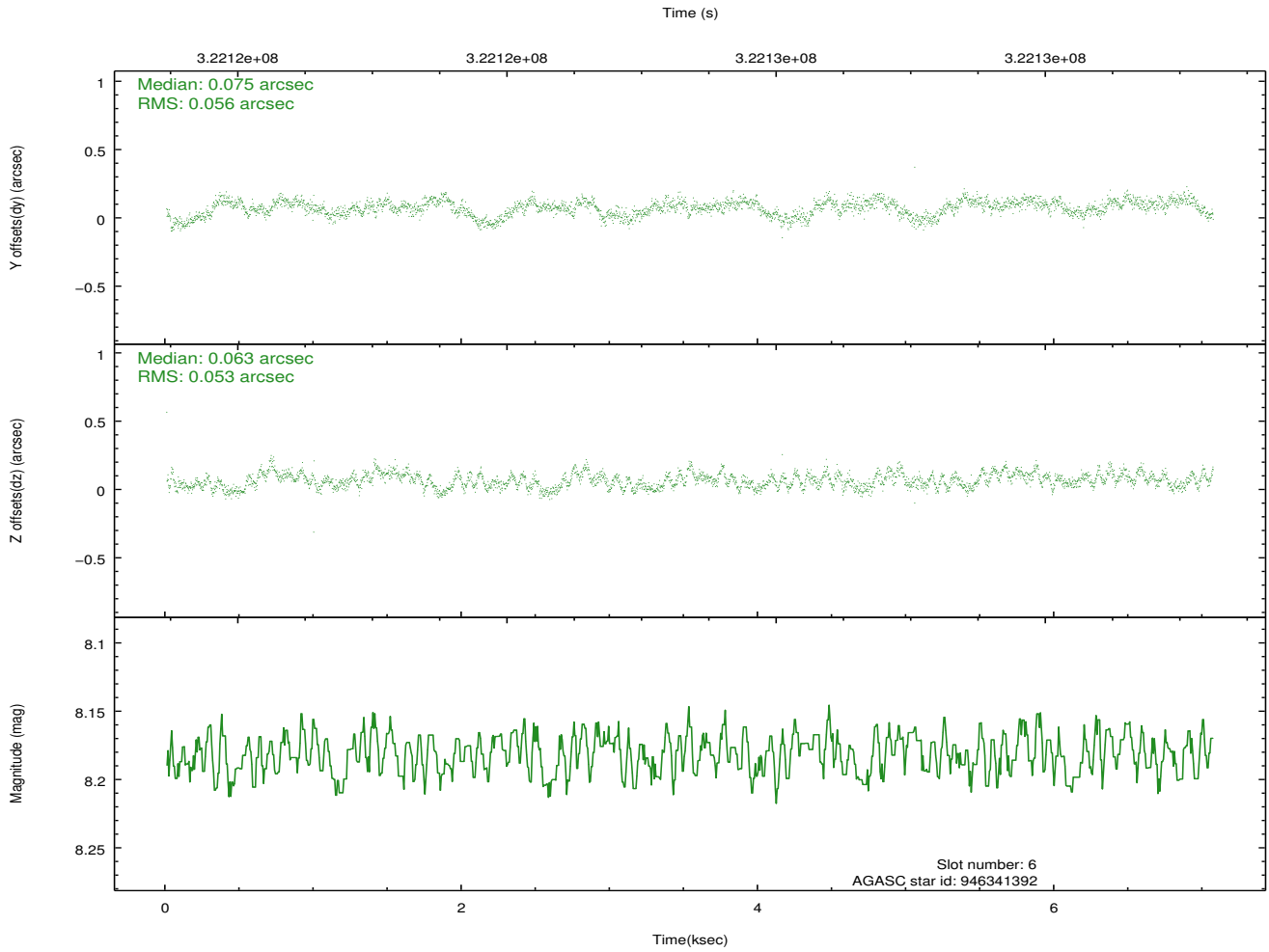
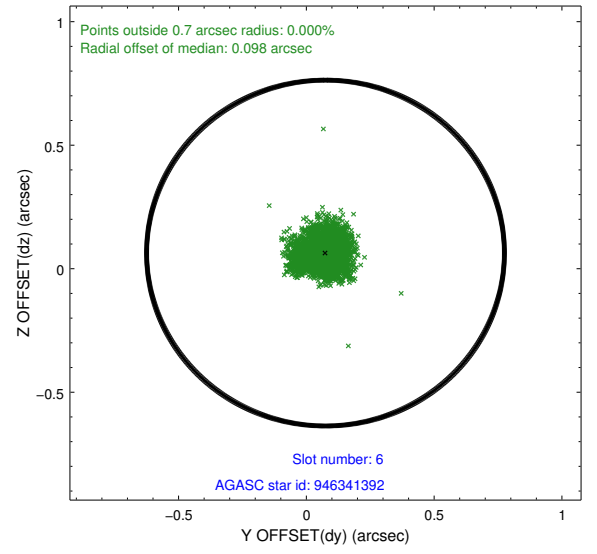
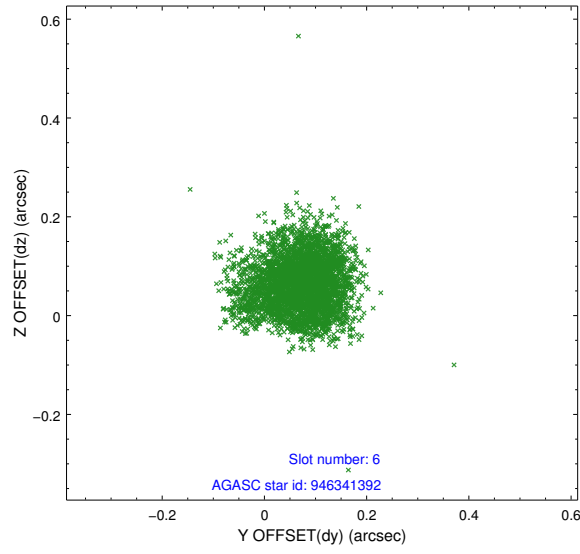
2.4.2 Slot 4



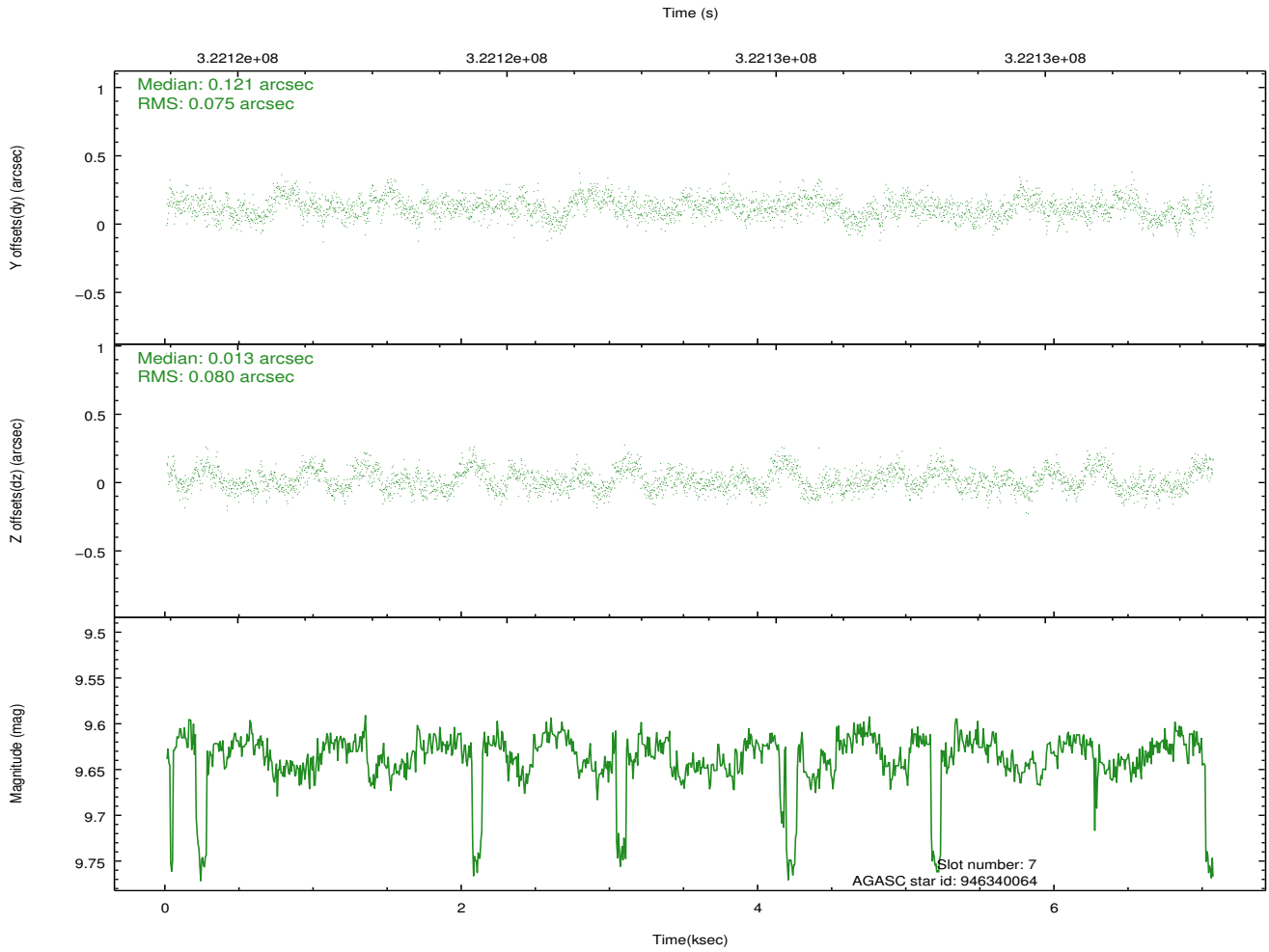
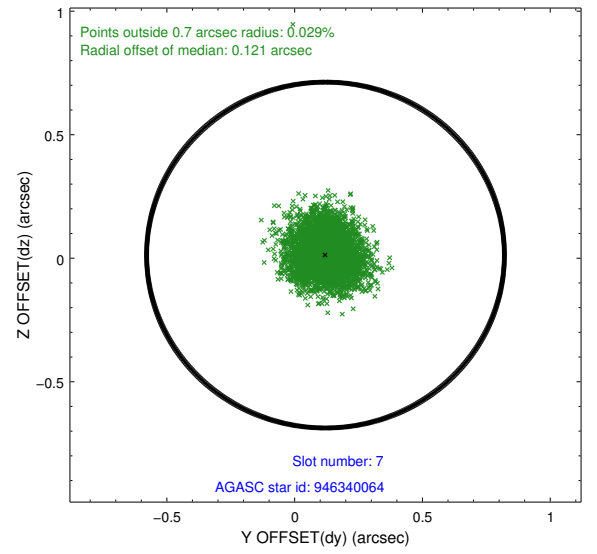
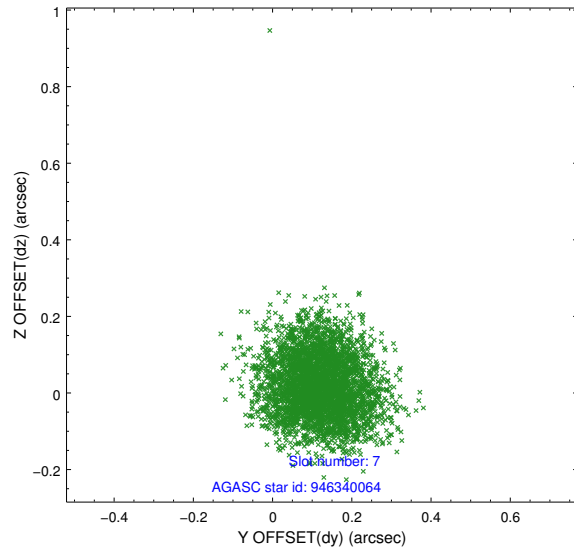
2.4.3 Slot 5



2.4.4 Slot 6

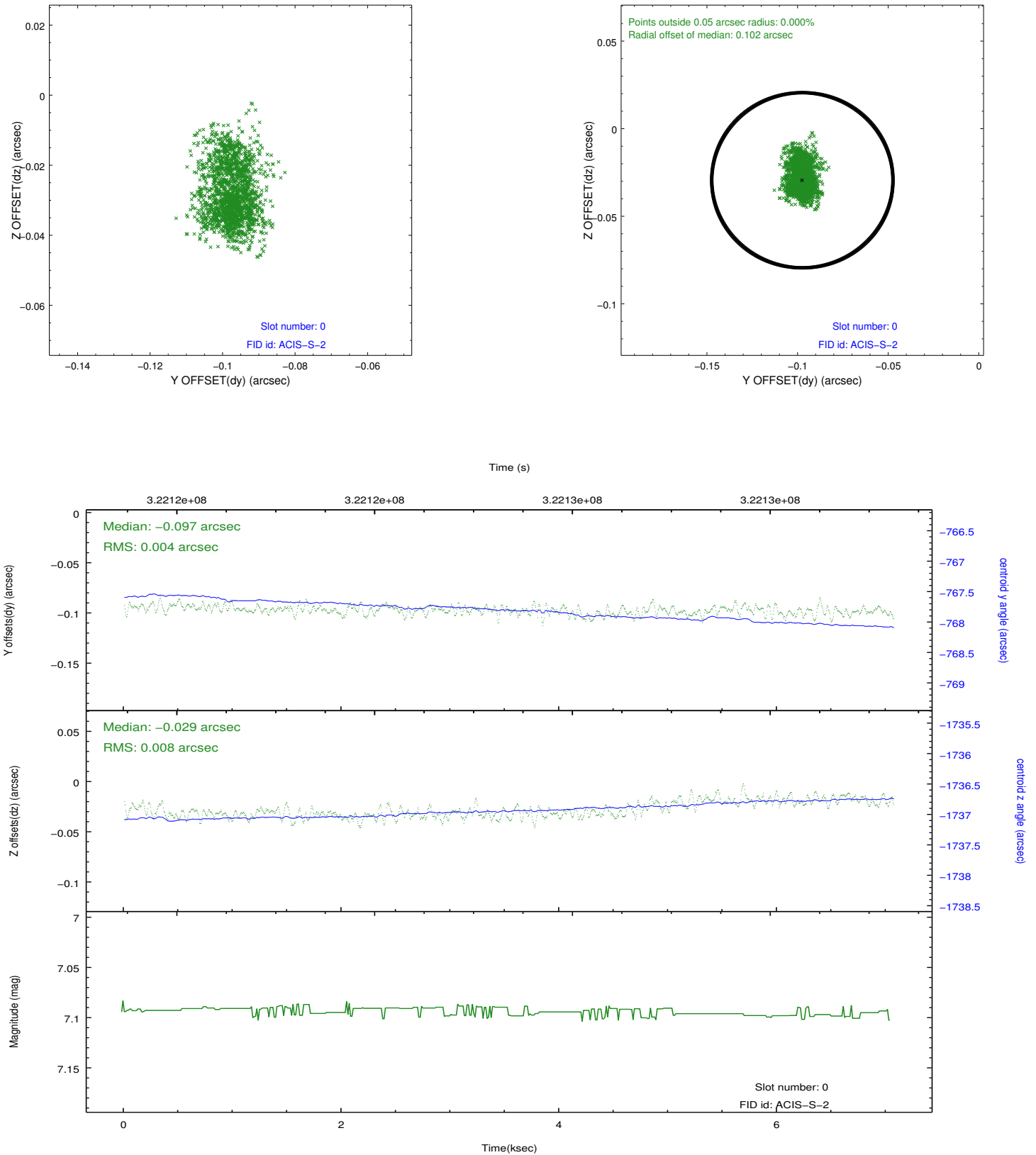


2.4.5 Slot 7

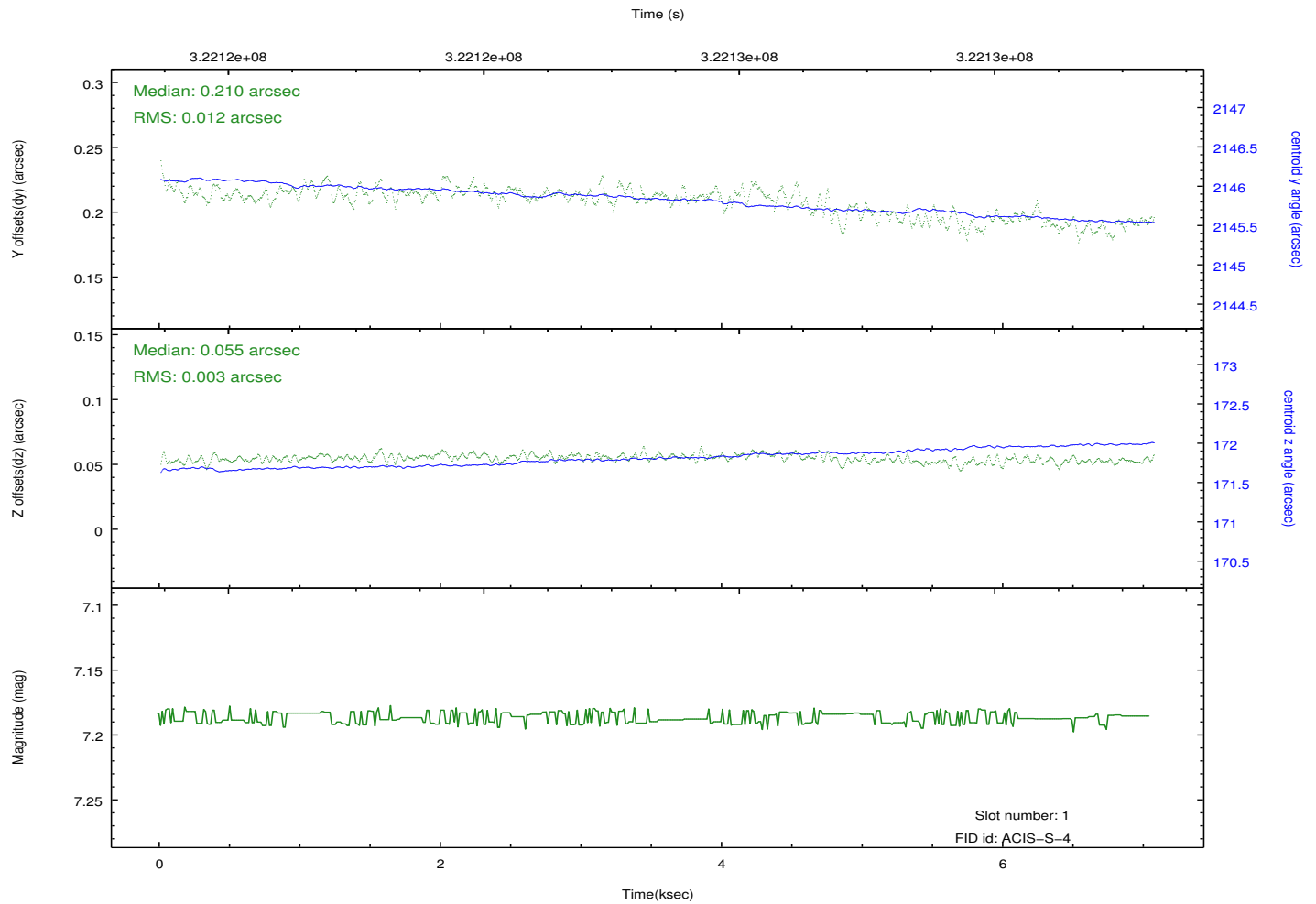
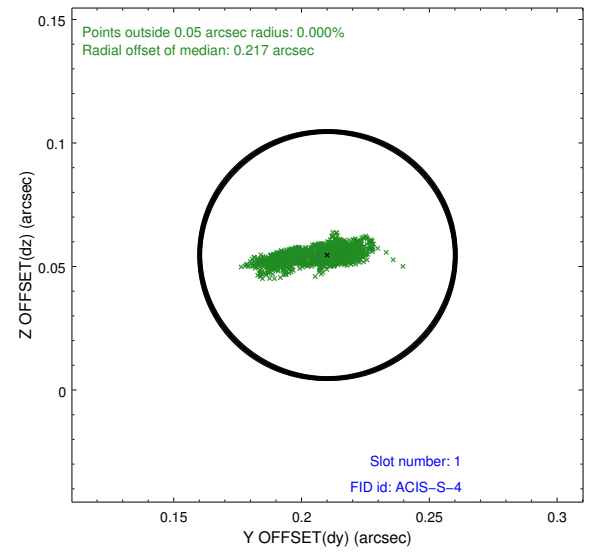
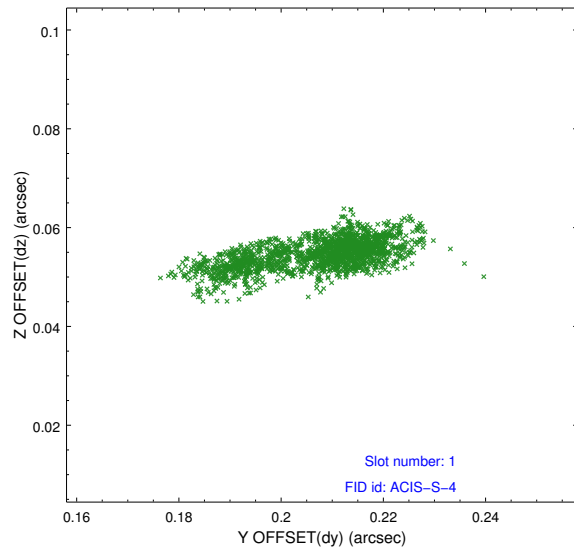


2.5 FID Slots

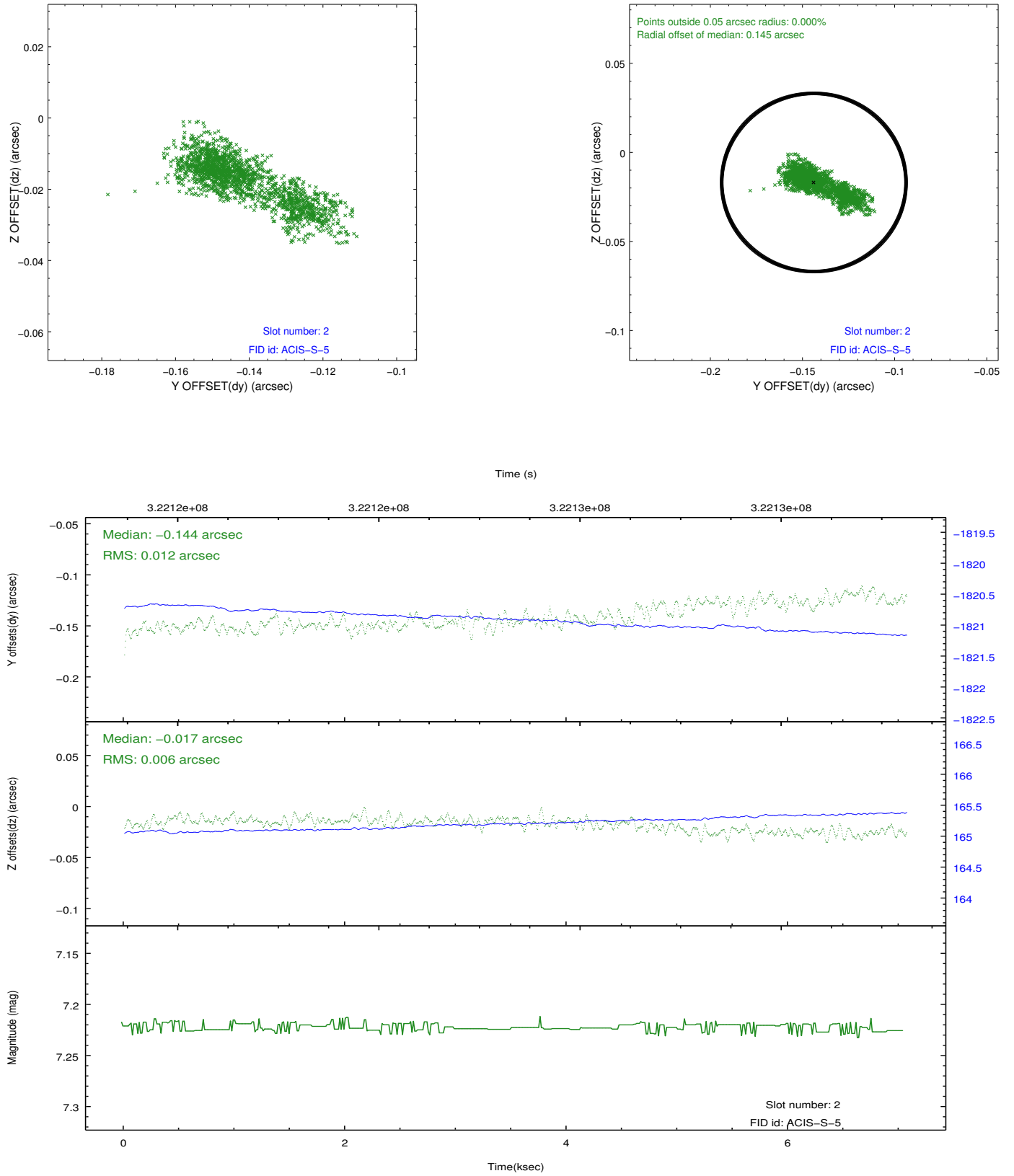
2.5.1 Slot 0



2.5.2 Slot 1



2.5.3 Slot 2



A Summary

A.1 Status

V&V Scientist	Jen Lauer
V&V Date (YYYY-MM-DD)	2012.05.14
V&V Edition	1
V&V Disposition and Status	OK
V&V Charge Time	7.05919997

A.2 Comments