

V&V Reference Report

L2 ASCDS Version : 8.4.4

Observation 8553 - L2 Version 3
Chandra X-Ray Center

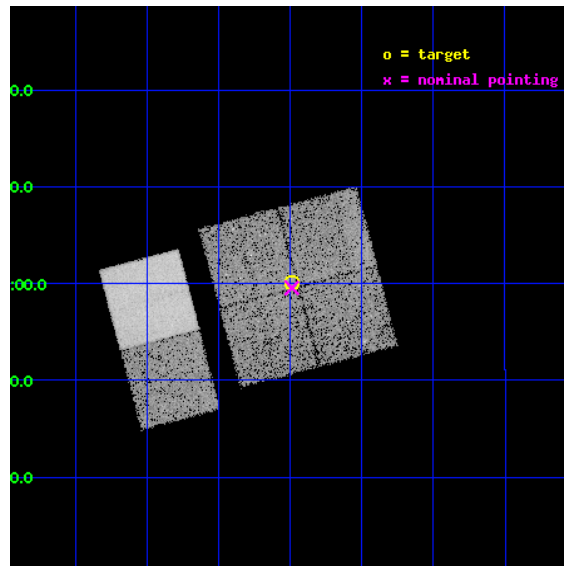
L2 Processing Date : Apr 23 2012

Contents

1	Front	2
2	OBI	3
2.1	OBI	3
2.1.1	Images	3
2.1.2	Bias	3
2.1.3	Parameters	4
2.1.4	Events	4
2.2	Compared Parameters	5
2.3	Aspect	6
2.4	Star Slots	9
2.4.1	Slot 3	9
2.4.2	Slot 4	10
2.4.3	Slot 5	11
2.4.4	Slot 6	12
2.4.5	Slot 7	13
2.5	FID Slots	14
2.5.1	Slot 0	14
2.5.2	Slot 1	15
2.5.3	Slot 2	16
A	Summary	17
A.1	Status	17
A.2	Comments	17

1 Front

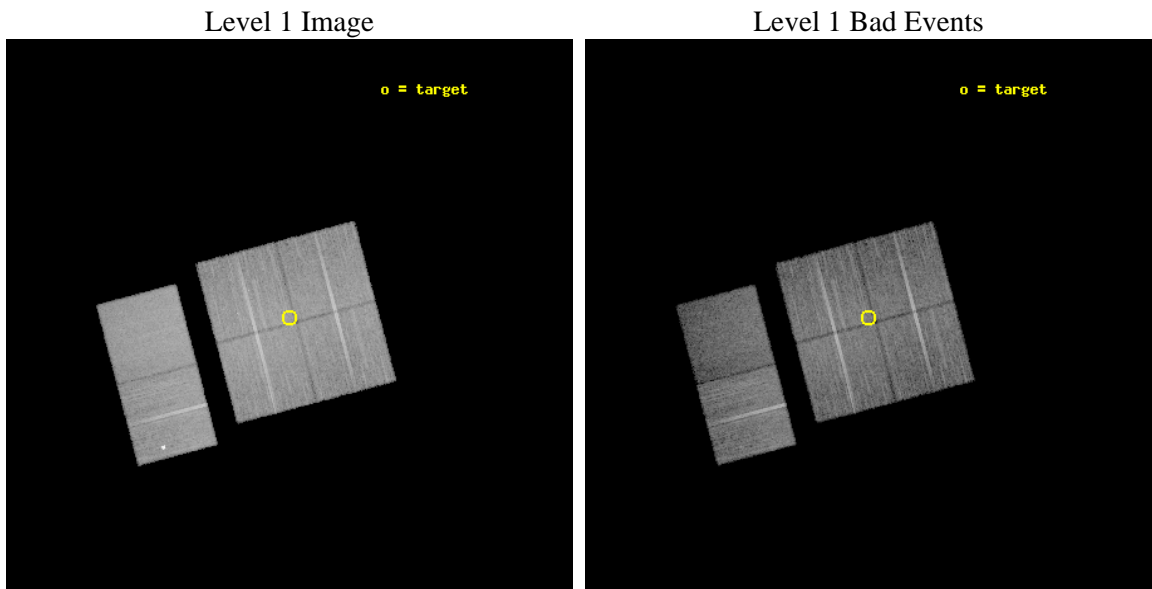
seq_num	900554	Sequence number
obs_id	8553	Observation id
title	THE CHANDRA-COSMOS SURVEY	Proposal title
observer	Dr. Martin Elvis	Principal investigator
object	C-COSMOS4-1	Source name
dtcycle	0	
cycle	P	events from which exps? Prim/Second/Both
ra_targ	150.371642	Observer's specified target RA [deg]
dec_targ	2.000914	Observer's specified target Dec [deg]
ra_nom	150.37199811314	Nominal RA [deg]
dec_nom	1.9928084365865	Nominal Dec [deg]
roll_nom	255.20869575004	Nominal Roll [deg]
revision	3	Processing version of data
ontime	15043.199944019	Sum of GTIs [s]
livetime	14852.713888401	Livetime [s]
ontime0	15043.199944019	Sum of GTIs [s]
ontime1	15043.199944019	Sum of GTIs [s]
ontime2	15043.199944019	Sum of GTIs [s]
ontime3	15043.199944019	Sum of GTIs [s]
ontime6	15043.199944019	Sum of GTIs [s]
ontime7	15043.199944019	Sum of GTIs [s]
l2events	106578	Number of level 2 events



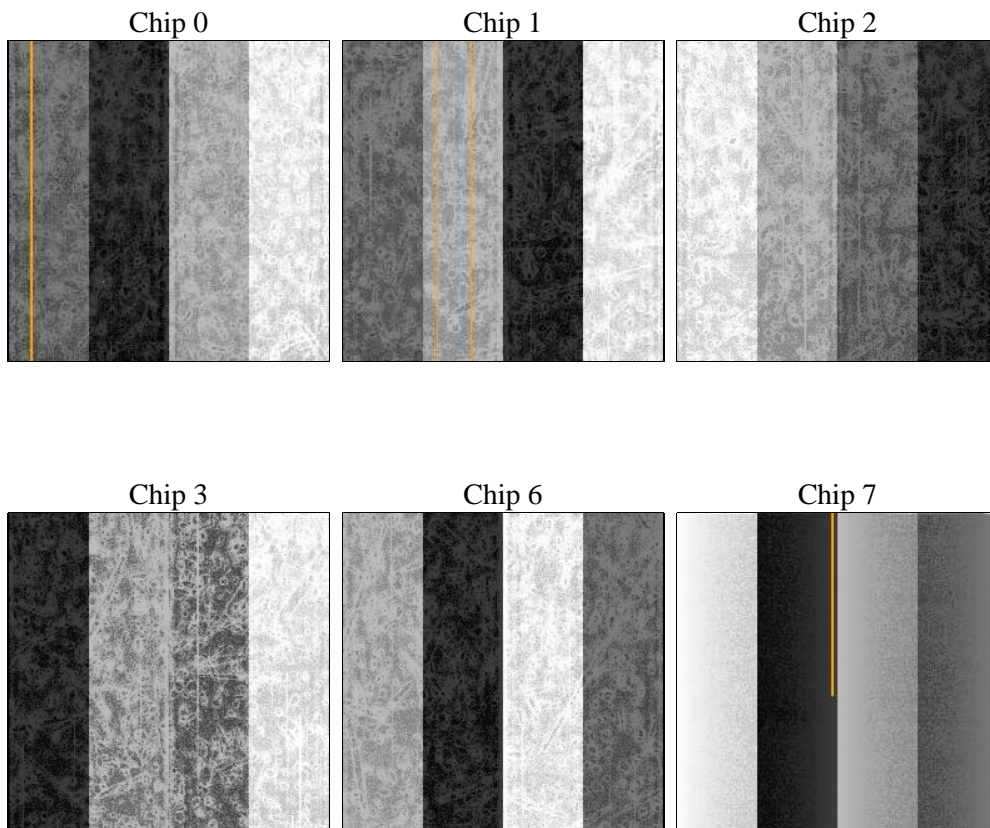
2 OBI

2.1 OBI

2.1.1 Images



2.1.2 Bias



2.1.3 Parameters

obi_num	0	Obi number	sched_exp_time	15000.000000	[s] Scheduled observation exposure time
ascdsver	8.4.4	Processing system revision	ontime	15043.199944019	Sum of GTIs [s]
caldsver	4.4.9	 	ontime0	15043.199944019	Sum of GTIs [s]
date	2012-04-23T21:51:27	Date and time of file creation	ontime1	15043.199944019	Sum of GTIs [s]
revision	3	Processing version of data	ontime2	15043.199944019	Sum of GTIs [s]
			ontime3	15043.199944019	Sum of GTIs [s]
			ontime6	15043.199944019	Sum of GTIs [s]
			ontime7	15043.199944019	Sum of GTIs [s]
			l1events	708717	Number of level 1 events

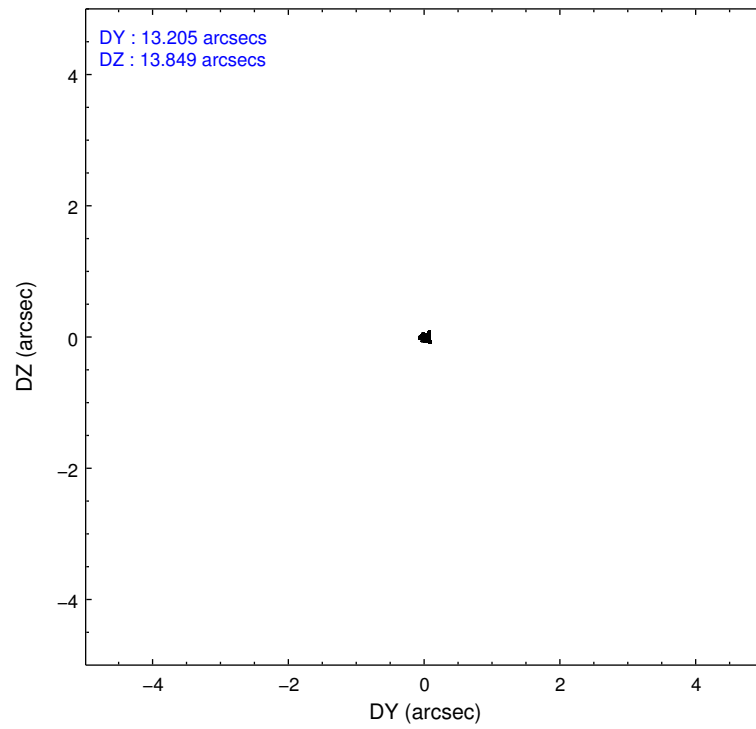
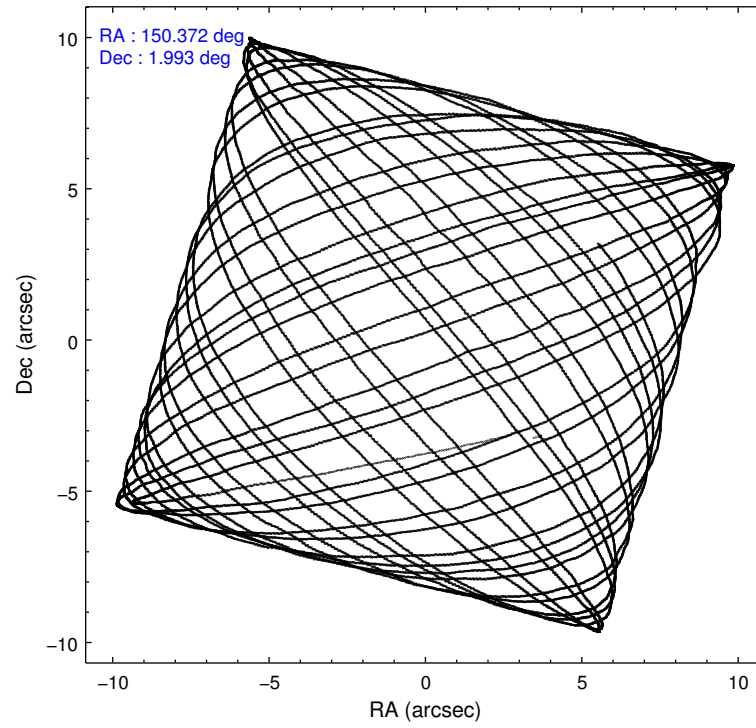
2.1.4 Events

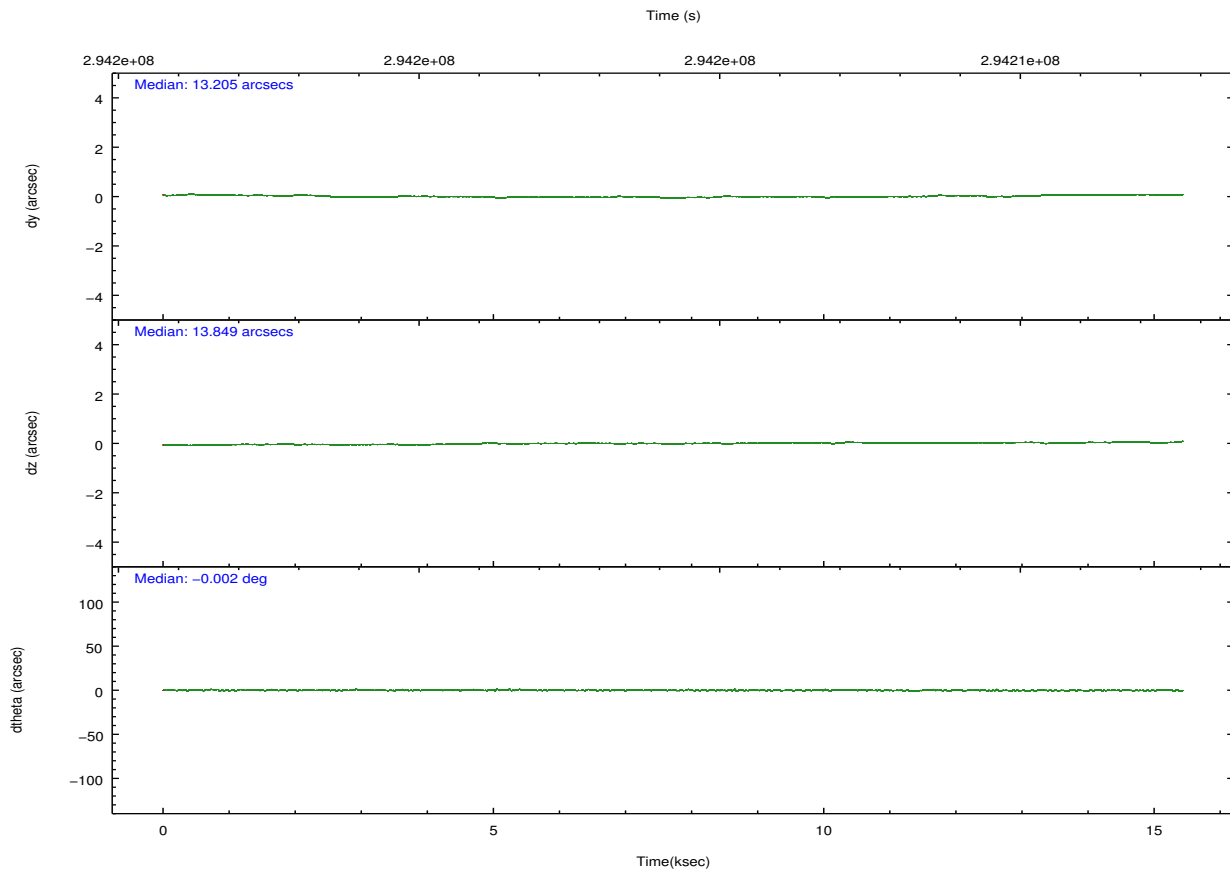
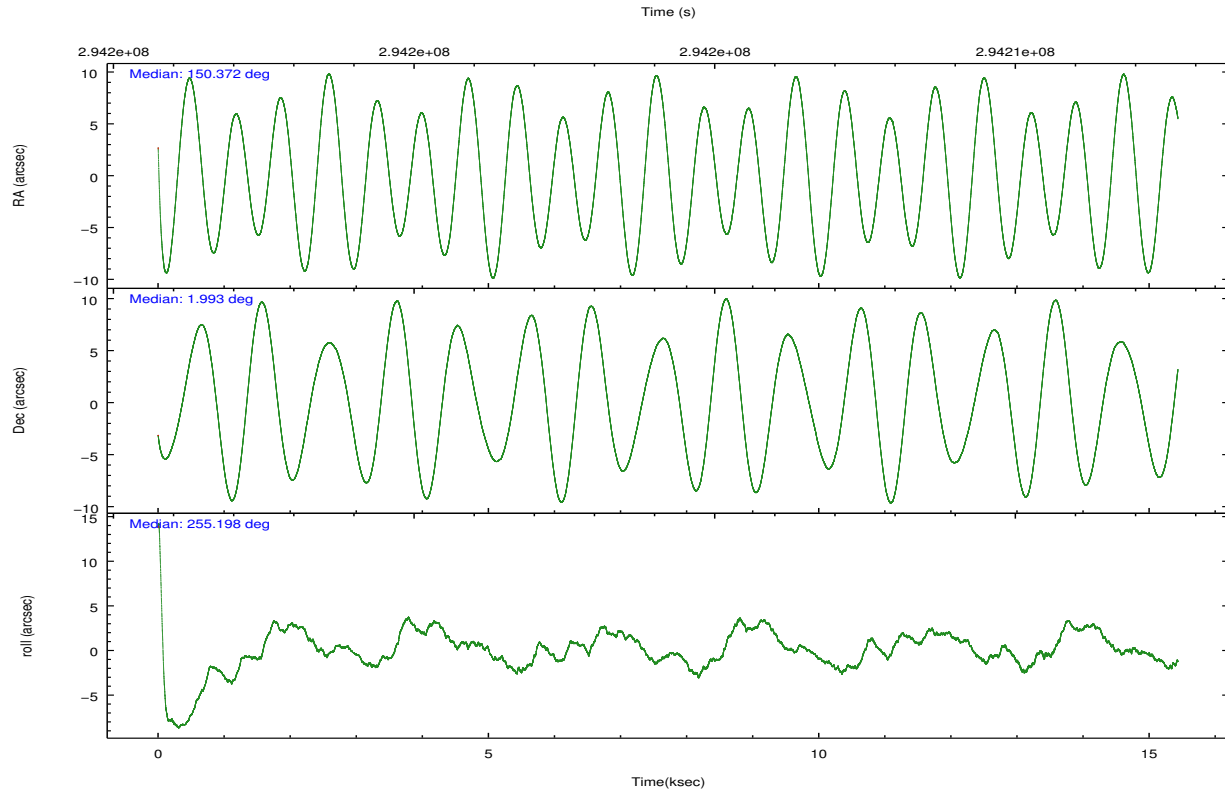
	ccd 0	ccd 1	ccd 2	ccd 3	ccd 6	ccd 7		ccd 0	ccd 1	ccd 2	ccd 3	ccd 6	ccd 7
level 1 events	107480	106161	120400	116348	128544	129784	grade 0 events	4032	4620	4055	4077	8615	5572
rejected events	96068	93301	109071	105208	112015	70381		3%	4%	3%	3%	6%	4%
rejected %	89%	87%	90%	90%	87%	54%	grade 1 events	42	58	63	65	105	169
								0%	0%	0%	0%	0%	0%
							grade 2 events	2730	2880	2733	2399	2763	11961
								2%	2%	2%	2%	2%	9%
							grade 3 events	1278	1392	1219	1269	1306	5468
								1%	1%	1%	1%	1%	4%
							grade 4 events	1185	1341	1183	1221	1240	5463
								1%	1%	0%	1%	0%	4%
							grade 5 events	3917	4317	3779	4655	4850	13663
								3%	4%	3%	4%	3%	10%
							grade 6 events	2190	2632	2139	2177	2611	30953
								2%	2%	1%	1%	2%	23%
							grade 7 events	92106	88921	105229	100485	107054	56535
								85%	83%	87%	86%	83%	43%

2.2 Compared Parameters

Parameter	Planned	Actual	Parameter	Planned	Actual
Instrument	ACIS	ACIS	Obspar format version number	7	7
Detector	ACIS-012367	ACIS-012367	Obspar file type	PREDICTED	ACTUAL
Grating	NONE	NONE	Obspar update status	NONE	UPDATED
Data mode	VFAINT	VFAINT	CCD I0 on	Y	Y
Observation mode	POINTING	POINTING	CCD I1 on	Y	Y
[deg] Pointing RA	150.364672	150.3719981131387	CCD I2 on	Y	Y
[deg] Pointing Dec	2.019340	1.99280843658647	CCD I3 on	Y	Y
[deg] Pointing Roll	255.000241	255.2086957500361	CCD S0 on	N	N
[mm] SIM focus pos	-0.782348	-0.7809083437167272	CCD S1 on	N	N
[mm] SIM defocus	0	0.001439871863259334	CCD S2 on	O1	Y
[mm] SIM translation stage pos	-233.592463	-233.5874344608287	CCD S3 on	O2	Y
[mm] SIM translation stage offset	0	-0.005018542100998502	CCD S4 on	N	N
[s] Observation start time (MET)	294196949.184000	294195816.88989	CCD S5 on	N	N
Observation start date	2007-04-29T01:21:24	2007-04-29T01:03:36	Number of optional ACIS chips dropped	0	0
[s] Observation end time (MET)	294211949.184000	294213796.41574	On-chip summing requested	N	N
Observation end date	2007-04-29T05:31:24	2007-04-29T06:03:16	Subarray requested	NONE	NONE
Read mode	TIMED	TIMED	Alternating exposures requested	N	N
			[s] Primary exposure time	0.000000	3.2

2.3 Aspect



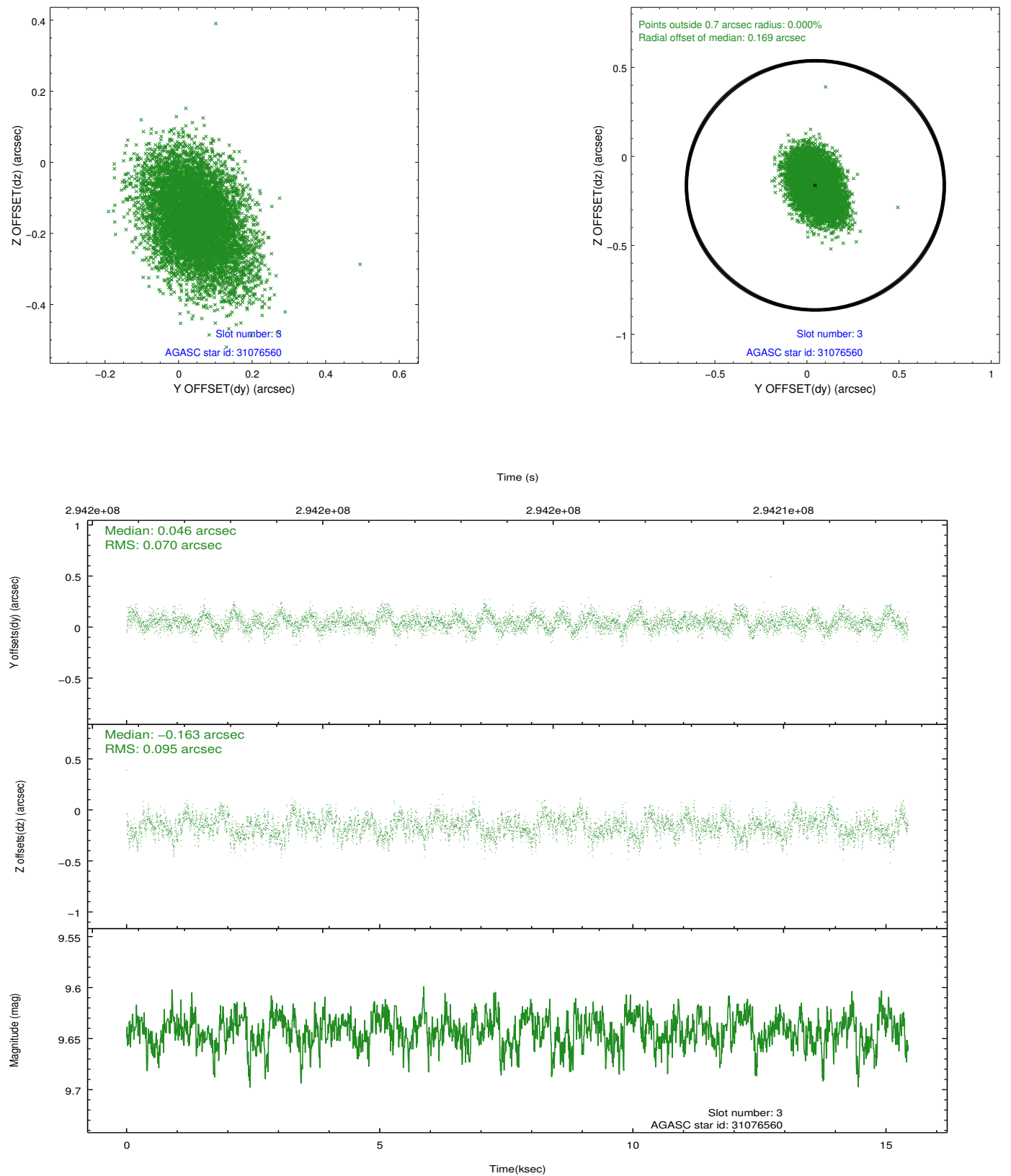


Slot Statistics

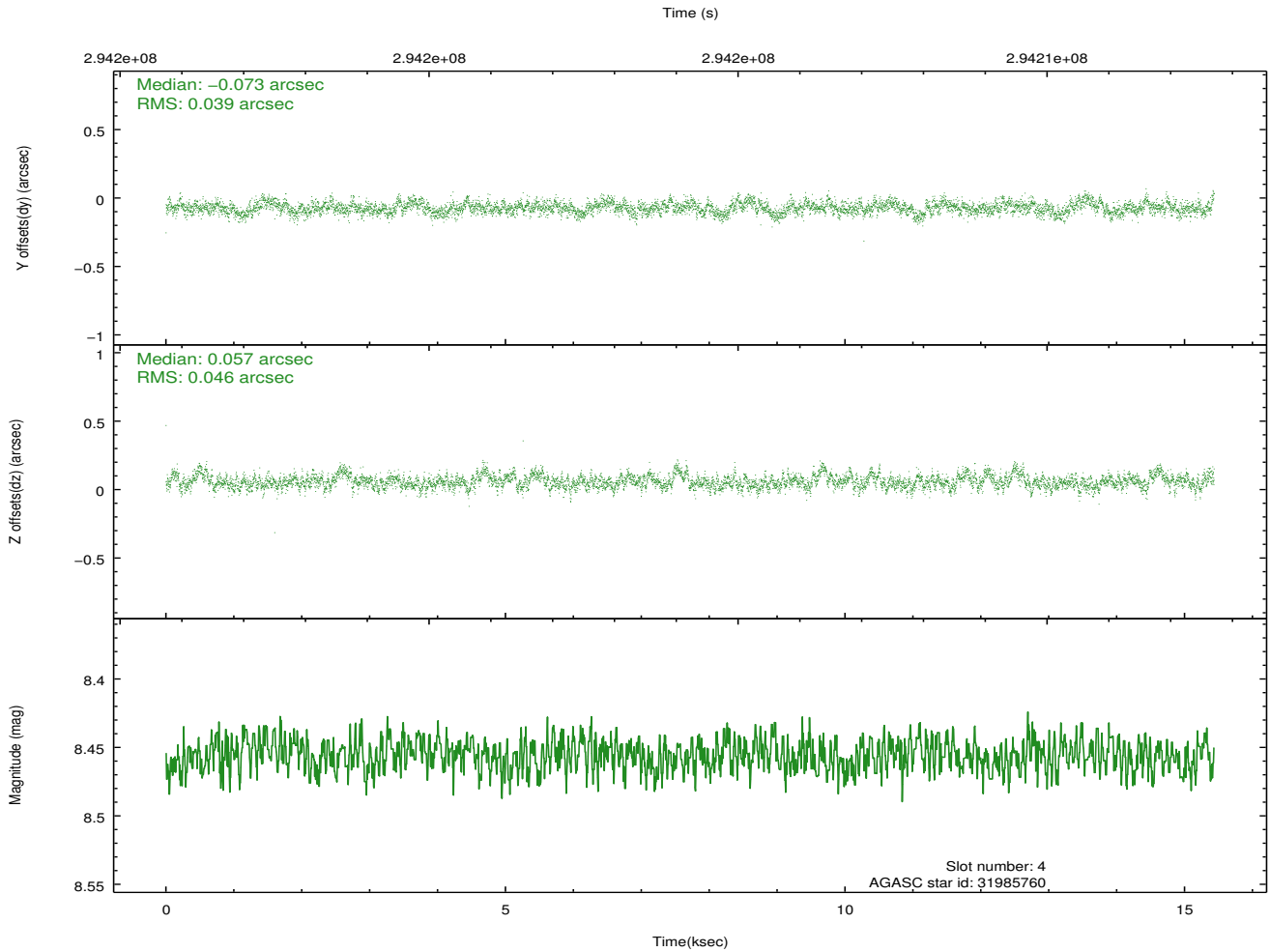
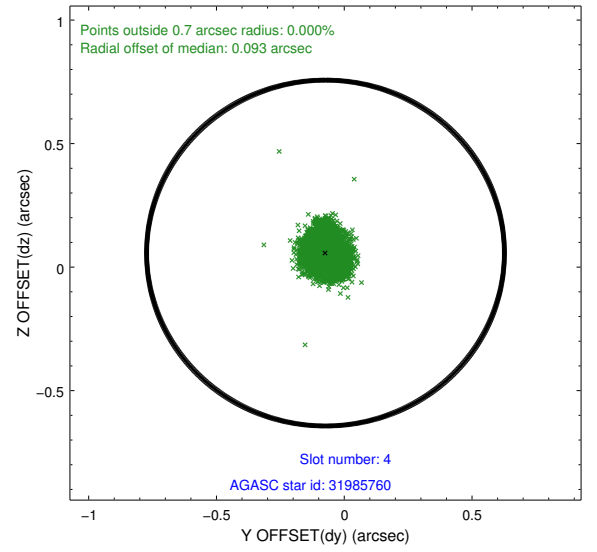
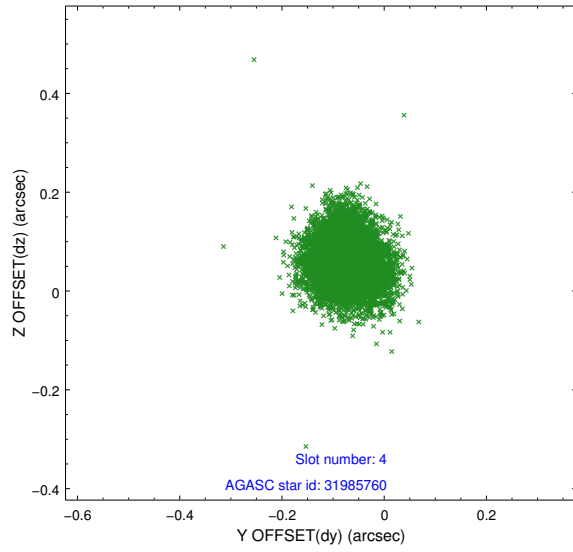
slot	status	id	mag	n_pts	med_dy	med_dz	dr1	dr2	ra	dec	mean_y	mean_z
0	FID	ACIS-I-1	7.23	3765	0.042	0.001	0.006	0.011	0.000000	0.000000	926.34	-837.41
1	FID	ACIS-I-5	7.23	3764	-0.228	0.045	0.006	0.010	0.000000	0.000000	-1821.89	1059.97
2	FID	ACIS-I-6	7.24	3765	0.095	0.025	0.007	0.011	0.000000	0.000000	391.61	1704.79
3	GUIDE	31076560	9.64	7521	0.046	-0.163	0.125	0.208	149.884782	2.009277	482.35	-1657.97
4	GUIDE	31985760	8.46	7525	-0.073	0.057	0.064	0.104	150.924581	2.094394	-782.69	1875.59
5	GUIDE	31986152	9.00	7524	0.122	0.170	0.094	0.150	150.840314	2.057585	-576.13	1617.53
6	GUIDE	32374896	9.22	7526	-0.098	-0.100	0.080	0.131	150.682269	2.512794	-2011.68	643.71
7	GUIDE	32375384	9.98	7519	0.007	0.038	0.165	0.253	150.238117	2.622063	-1978.06	-1001.48

2.4 Star Slots

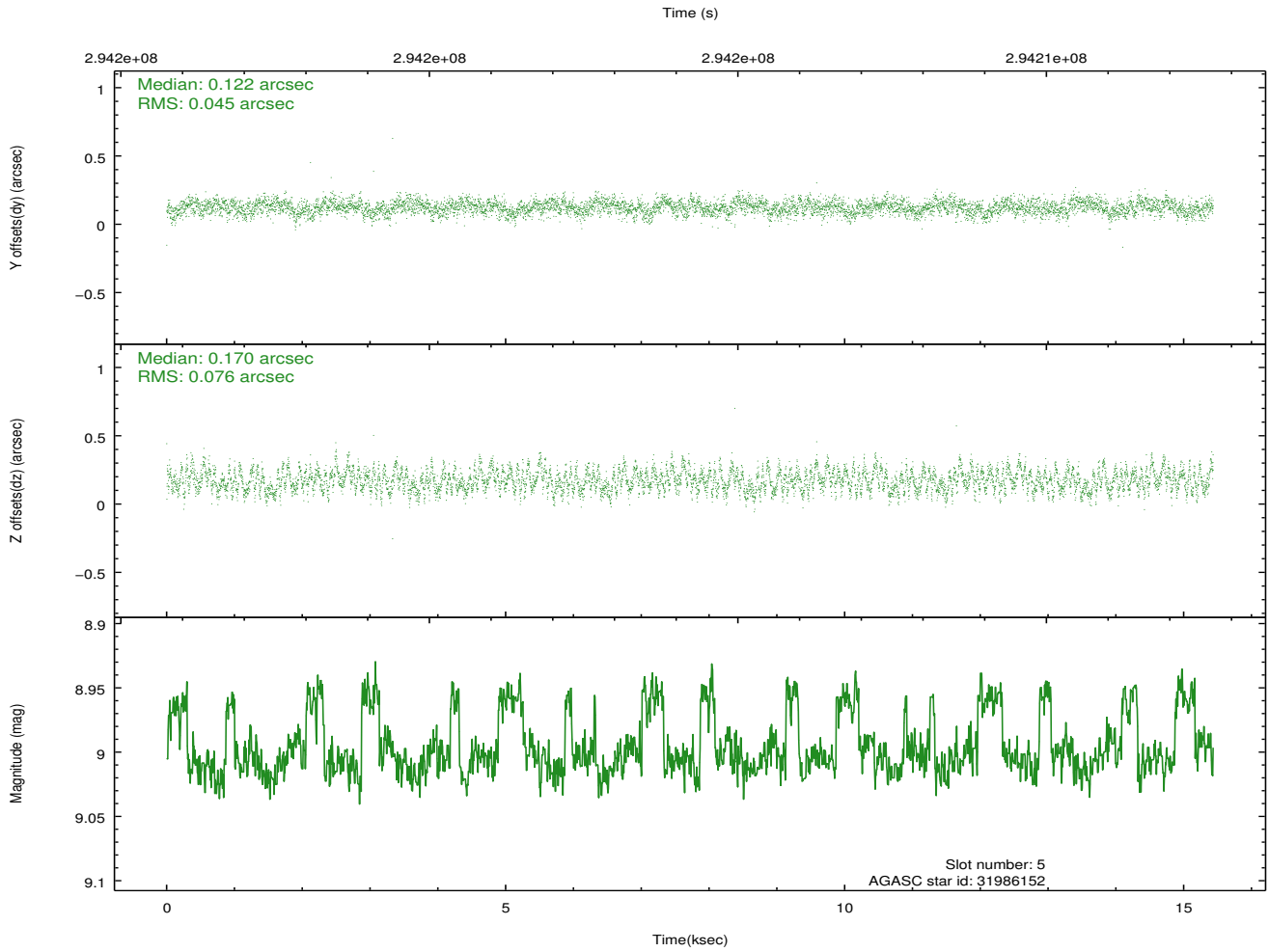
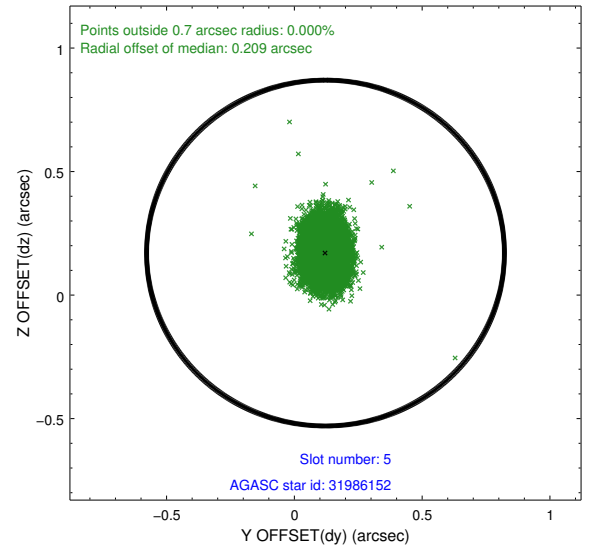
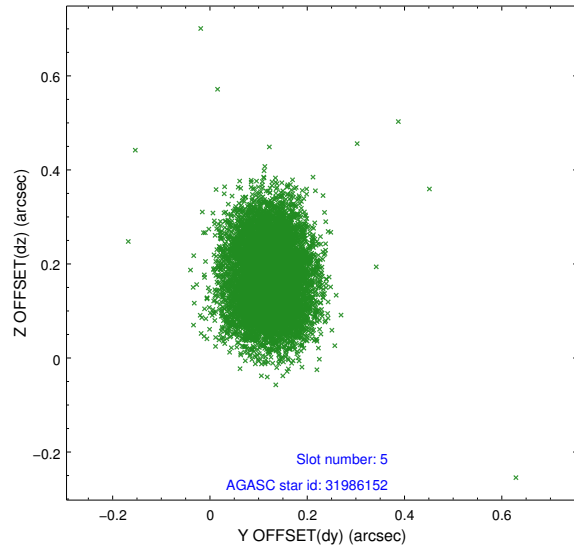
2.4.1 Slot 3



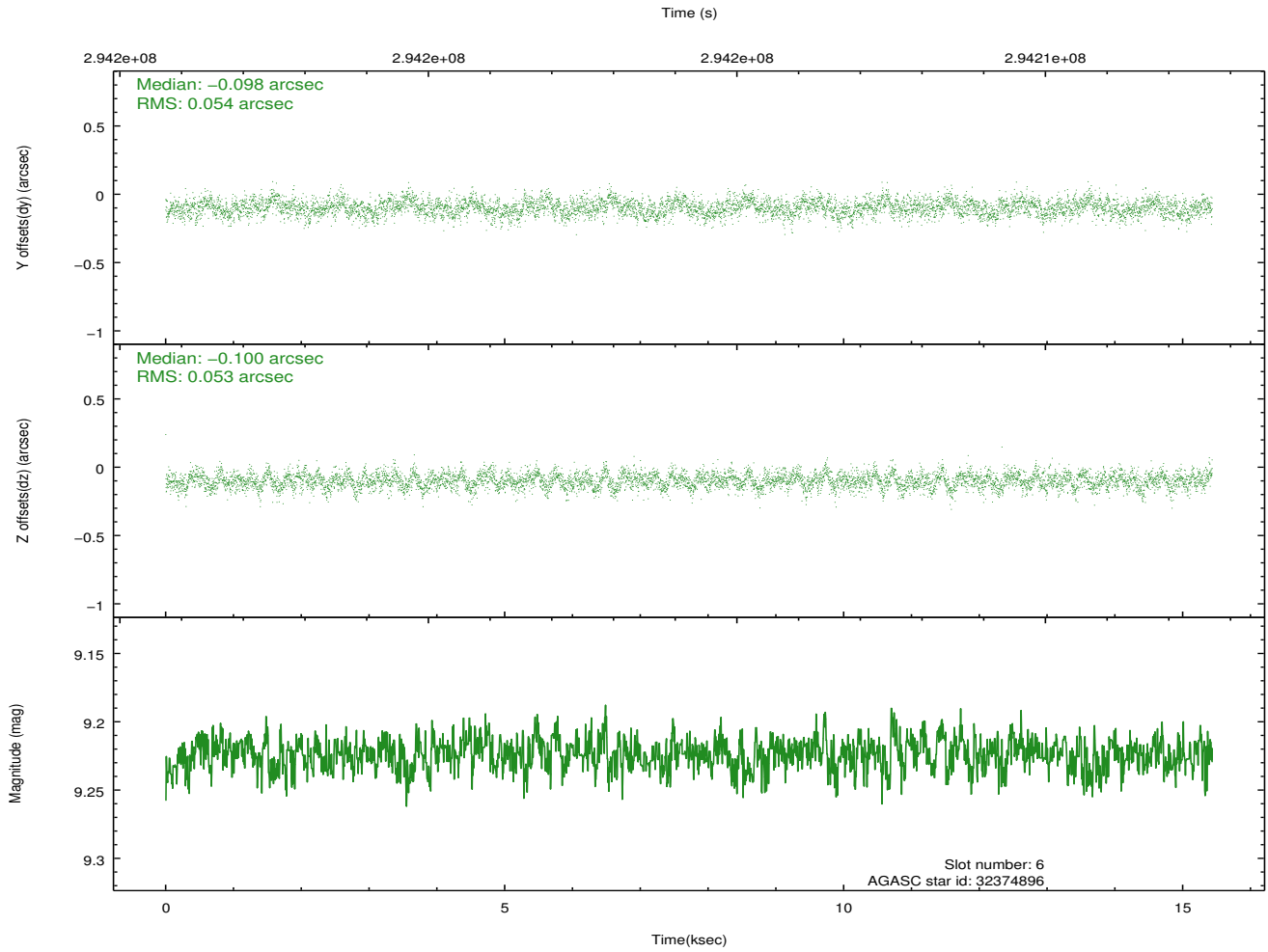
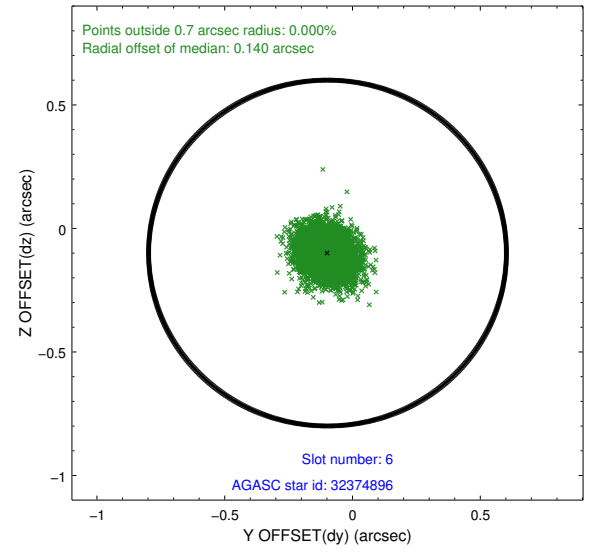
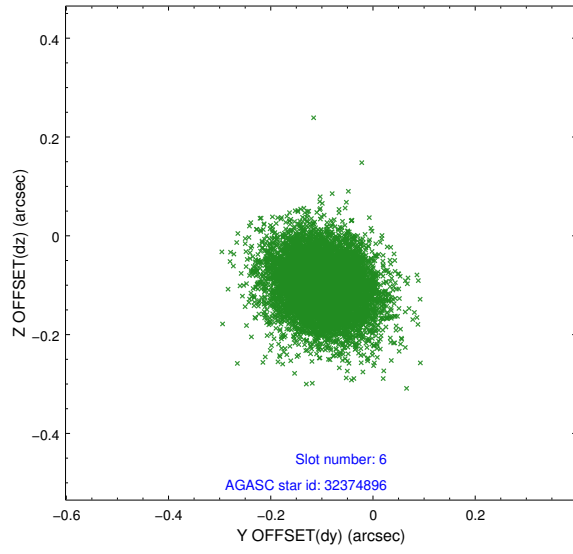
2.4.2 Slot 4



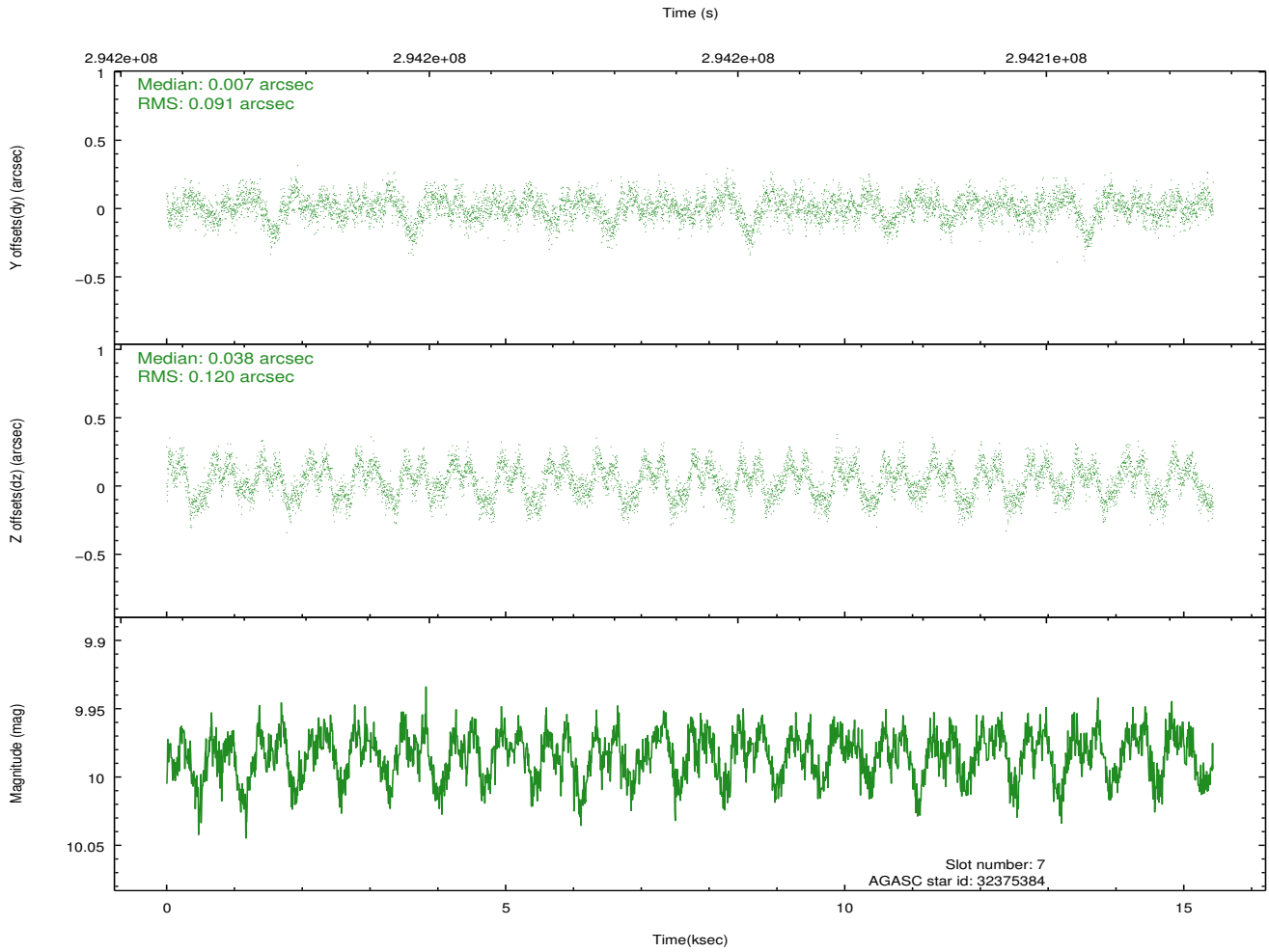
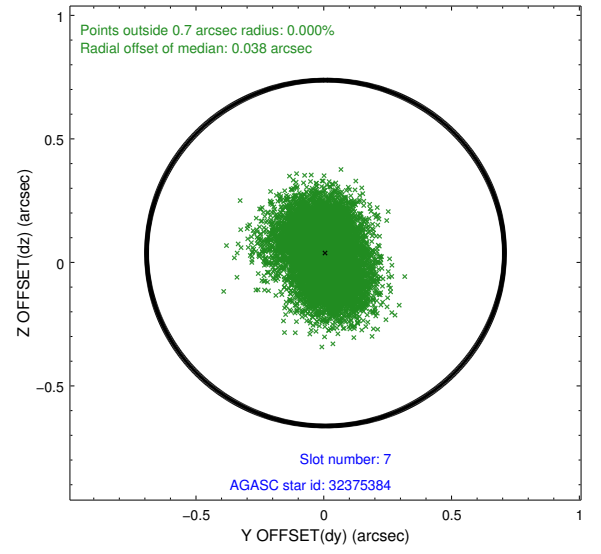
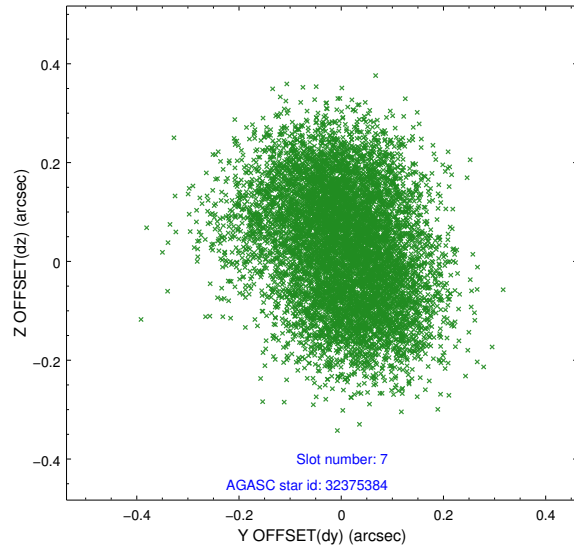
2.4.3 Slot 5



2.4.4 Slot 6

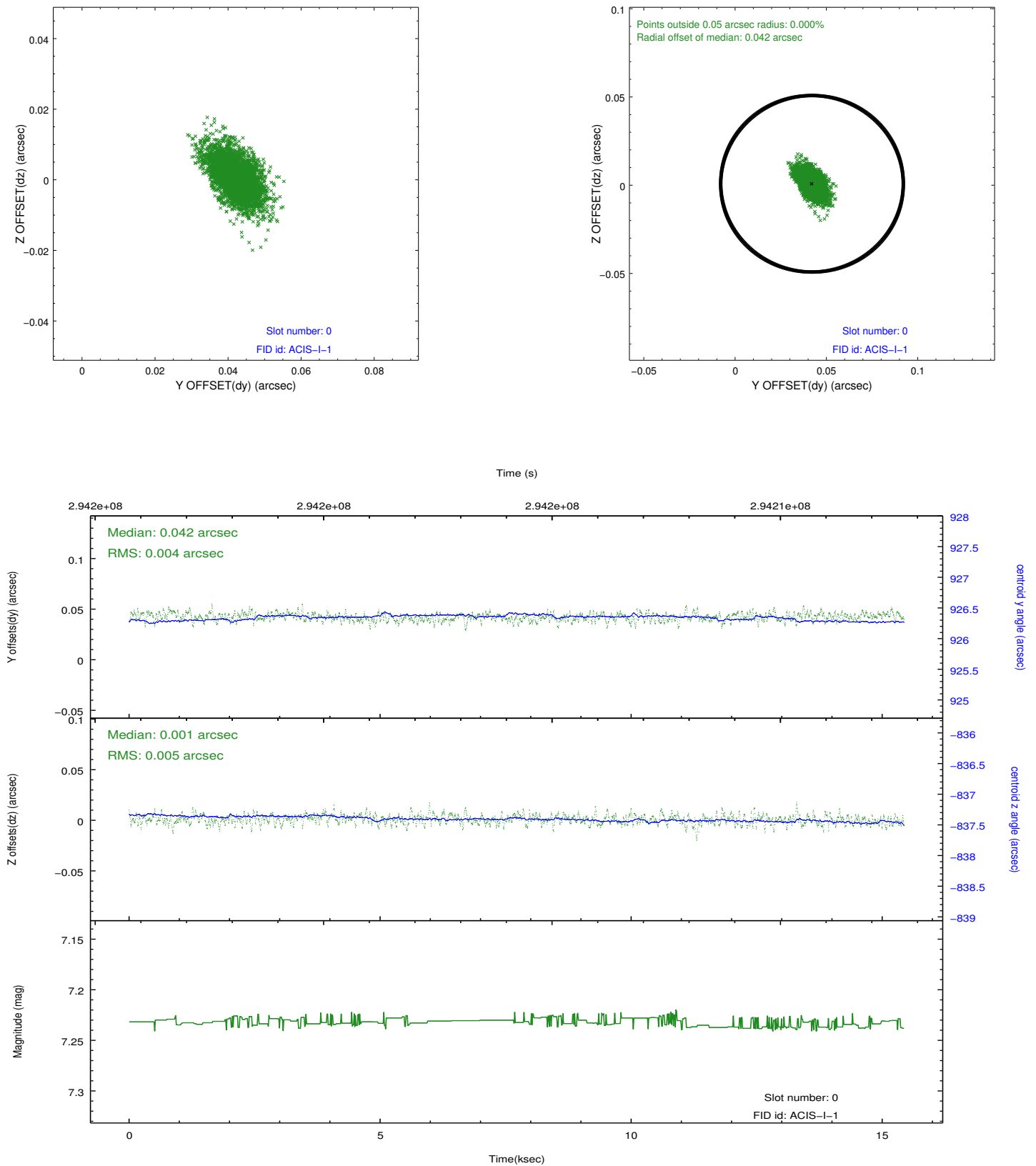


2.4.5 Slot 7

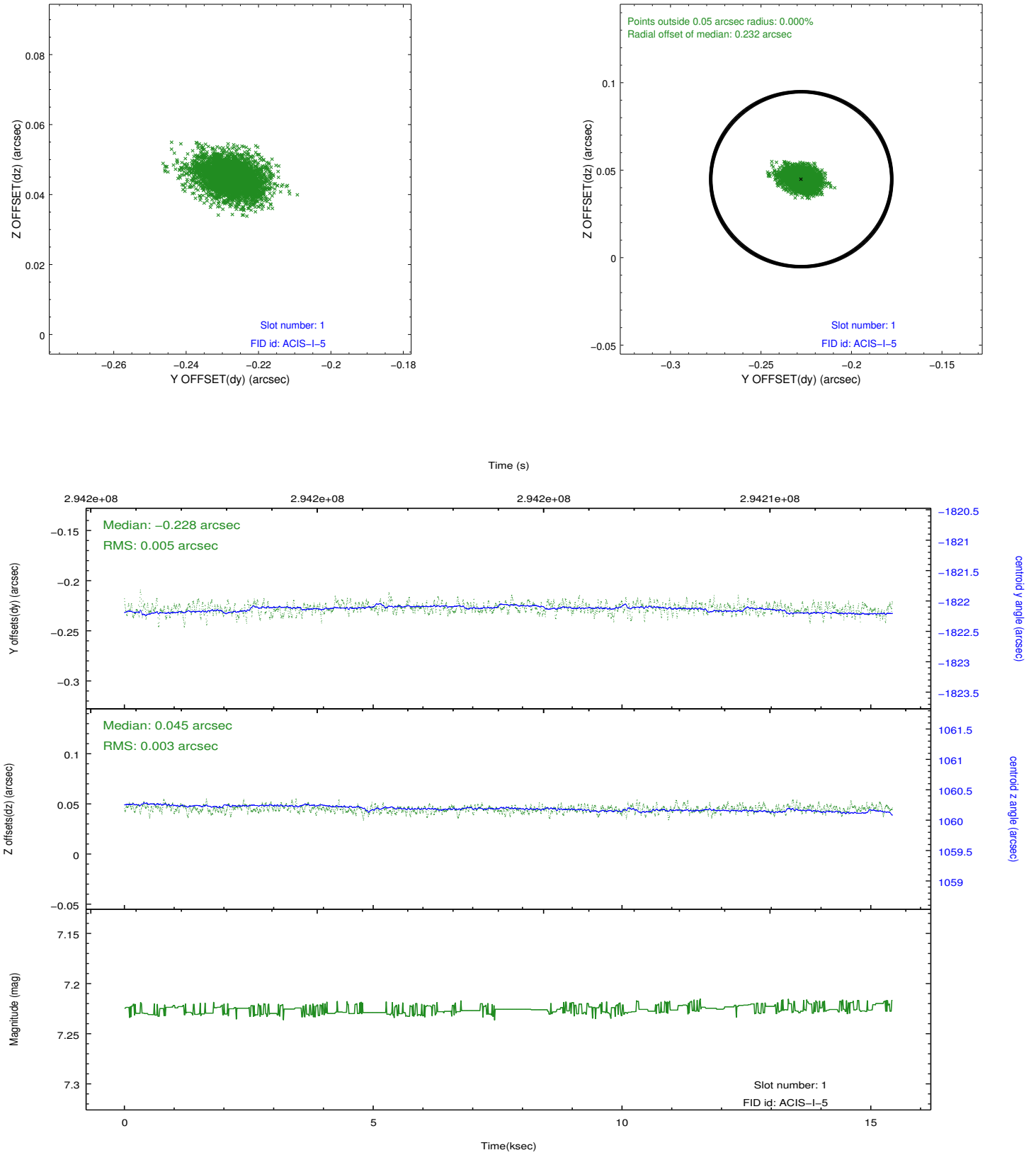


2.5 FID Slots

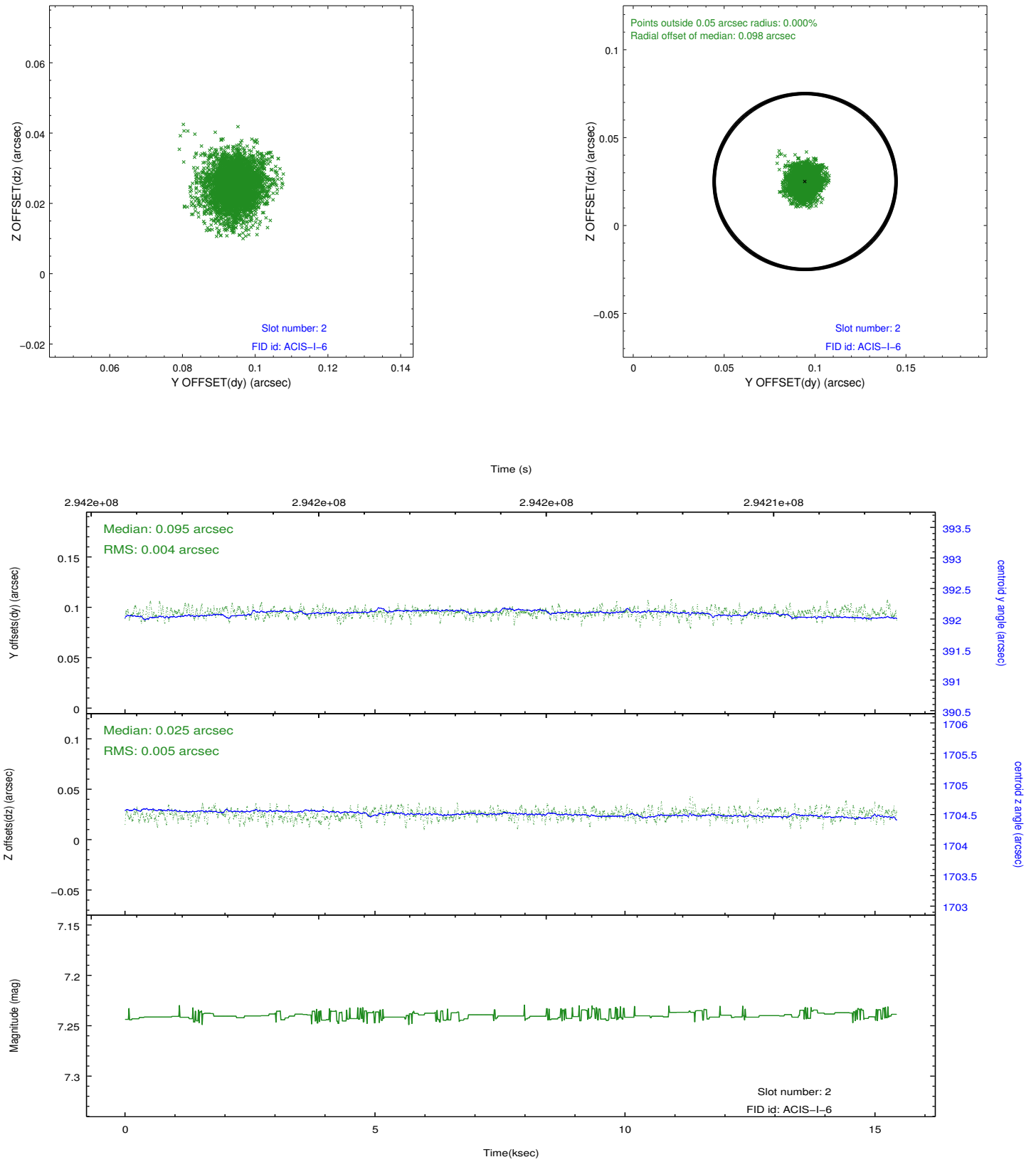
2.5.1 Slot 0



2.5.2 Slot 1



2.5.3 Slot 2



A Summary

A.1 Status

V&V Scientist	Jen Lauer
V&V Date (YYYY-MM-DD)	2012.04.24
V&V Edition	1
V&V Disposition and Status	OK
V&V Charge Time	15.0431999

A.2 Comments

Roll preference met.