

V&V Reference Report

L2 ASCDS Version : 8.4.3.1

Observation 8473 - L2 Version 2
Chandra X-Ray Center

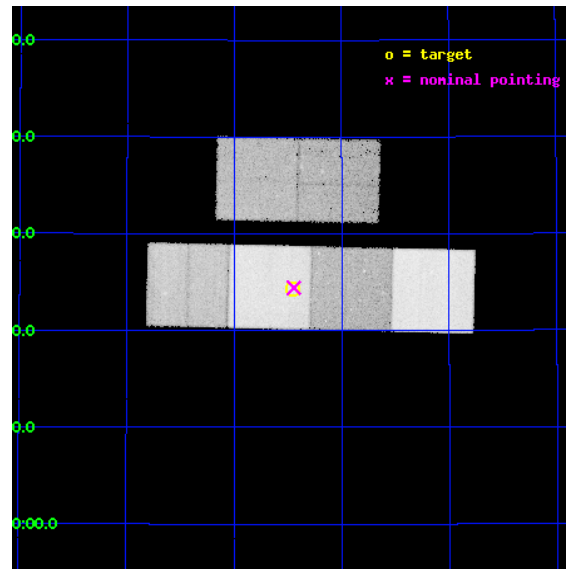
L2 Processing Date : Apr 13 2012

Contents

1	Front	2
2	OBI	3
2.1	OBI	3
2.1.1	Images	3
2.1.2	Bias	3
2.1.3	Parameters	4
2.1.4	Events	4
2.2	Compared Parameters	5
2.3	Aspect	6
2.4	Star Slots	9
2.4.1	Slot 3	9
2.4.2	Slot 4	10
2.4.3	Slot 5	11
2.4.4	Slot 6	12
2.4.5	Slot 7	13
2.5	FID Slots	14
2.5.1	Slot 0	14
2.5.2	Slot 1	15
2.5.3	Slot 2	16
A	Summary	17
A.1	Status	17
A.2	Comments	17

1 Front

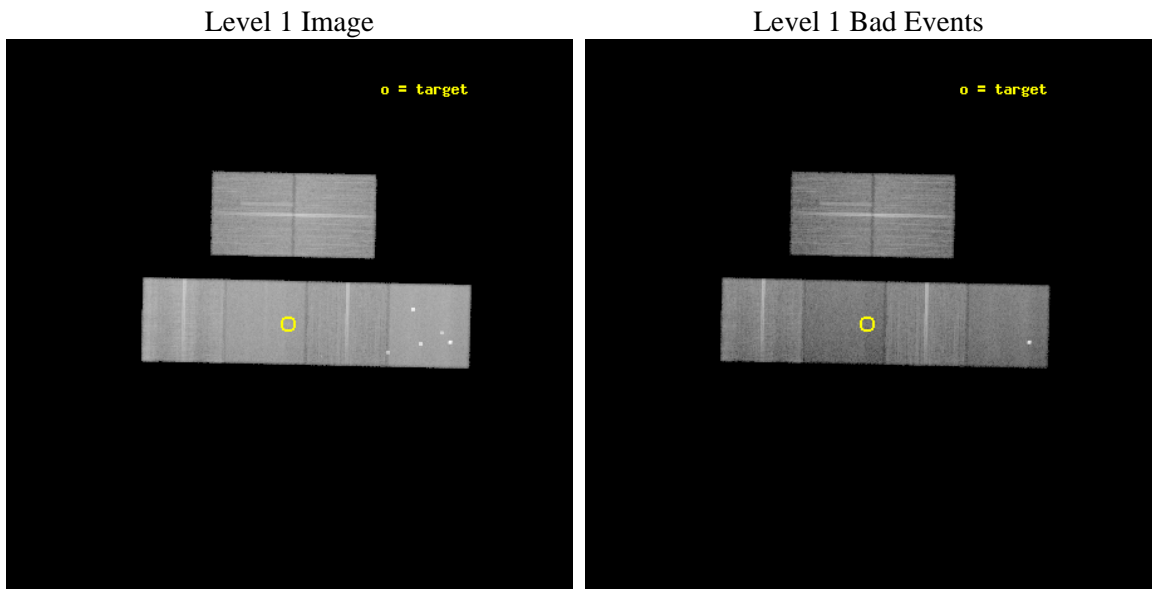
seq_num	500816	Sequence number
obs_id	8473	Observation id
title	The Extreme Supernova 2006gy	Proposal title
observer	Prof. David Pooley	Principal investigator
object	SN 2006gy	Source name
dtcycle	0	
cycle	P	events from which exps? Prim/Second/Both
ra_targ	49.362917	Observer's specified target RA [deg]
dec_targ	41.405417	Observer's specified target Dec [deg]
ra_nom	49.361184682991	Nominal RA [deg]
dec_nom	41.407060676005	Nominal Dec [deg]
roll_nom	181.25925776469	Nominal Roll [deg]
revision	2	Processing version of data
ontime	30124.799887836	Sum of GTIs [s]
livetime	29743.341532679	Livetime [s]
ontime2	30121.558947504	Sum of GTIs [s]
ontime3	30124.799887836	Sum of GTIs [s]
ontime5	30124.799887836	Sum of GTIs [s]
ontime6	30118.317927301	Sum of GTIs [s]
ontime7	30124.799887836	Sum of GTIs [s]
ontime8	30121.55893749	Sum of GTIs [s]
l2events	447608	Number of level 2 events



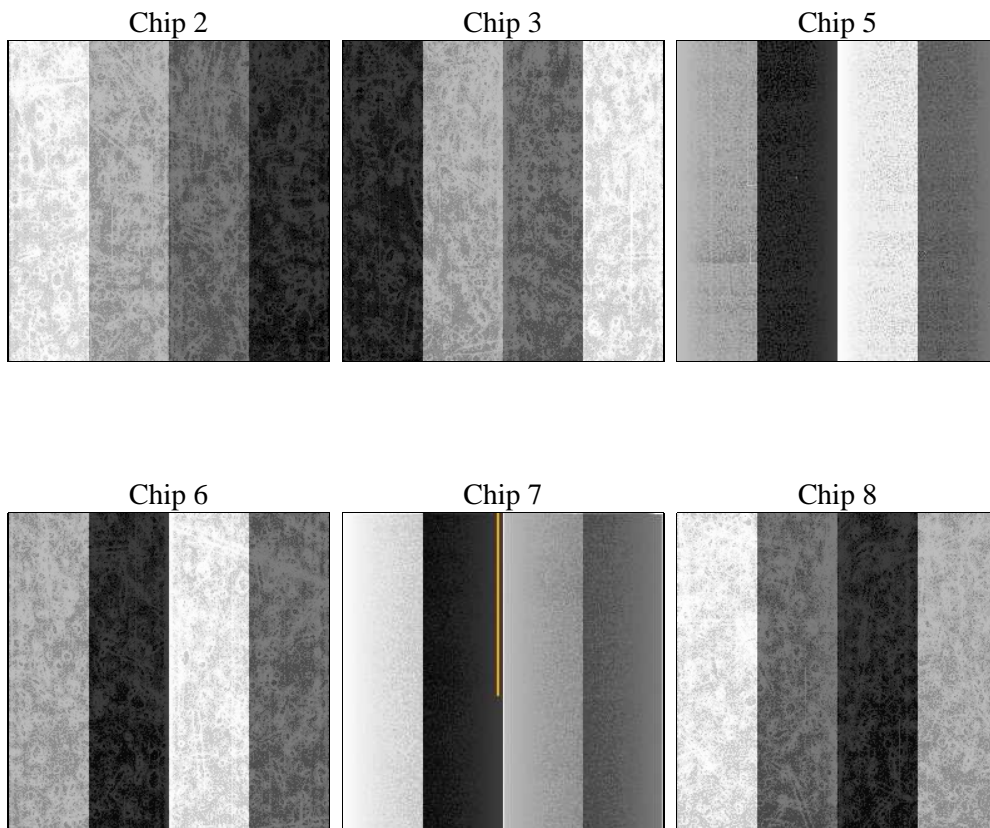
2 OBI

2.1 OBI

2.1.1 Images



2.1.2 Bias



2.1.3 Parameters

obi_num	0	Obi number	sched_exp_time	30000.000000	[s] Scheduled observation exposure time
ascdsver	8.4.3.1	Processing system revision	ontime	30124.799887836	Sum of GTIs [s]
caldsver	4.4.9	 	ontime2	30121.558947504	Sum of GTIs [s]
date	2012-04-13T15:46:12	Date and time of file creation	ontime3	30124.799887836	Sum of GTIs [s]
revision	2	Processing version of data	ontime5	30124.799887836	Sum of GTIs [s]
			ontime6	30118.317927301	Sum of GTIs [s]
			ontime7	30124.799887836	Sum of GTIs [s]
			ontime8	30121.55893749	Sum of GTIs [s]
			l1events	1706121	Number of level 1 events

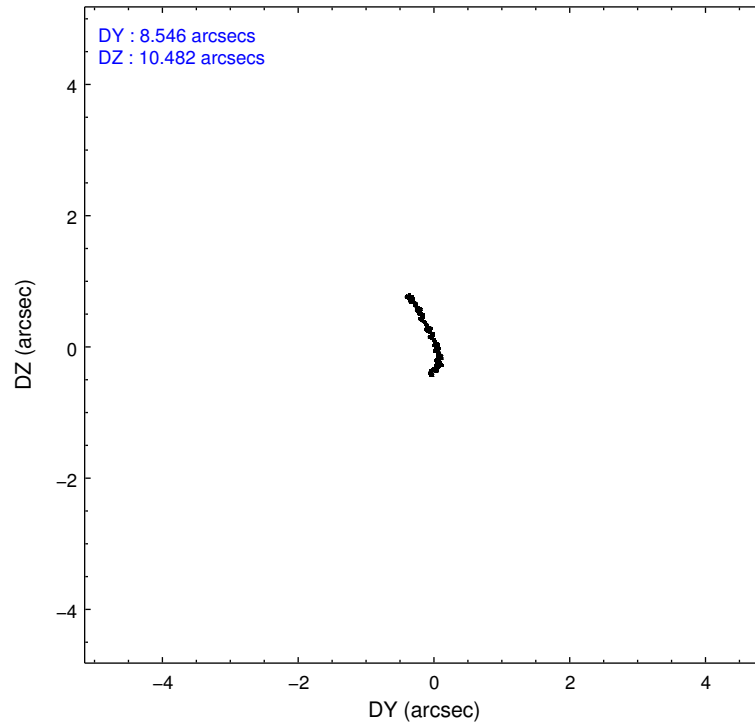
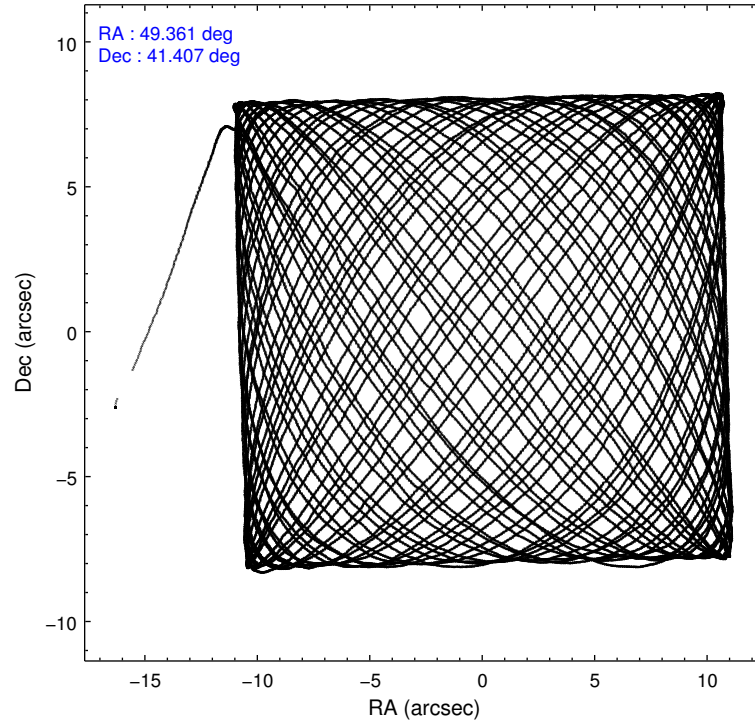
2.1.4 Events

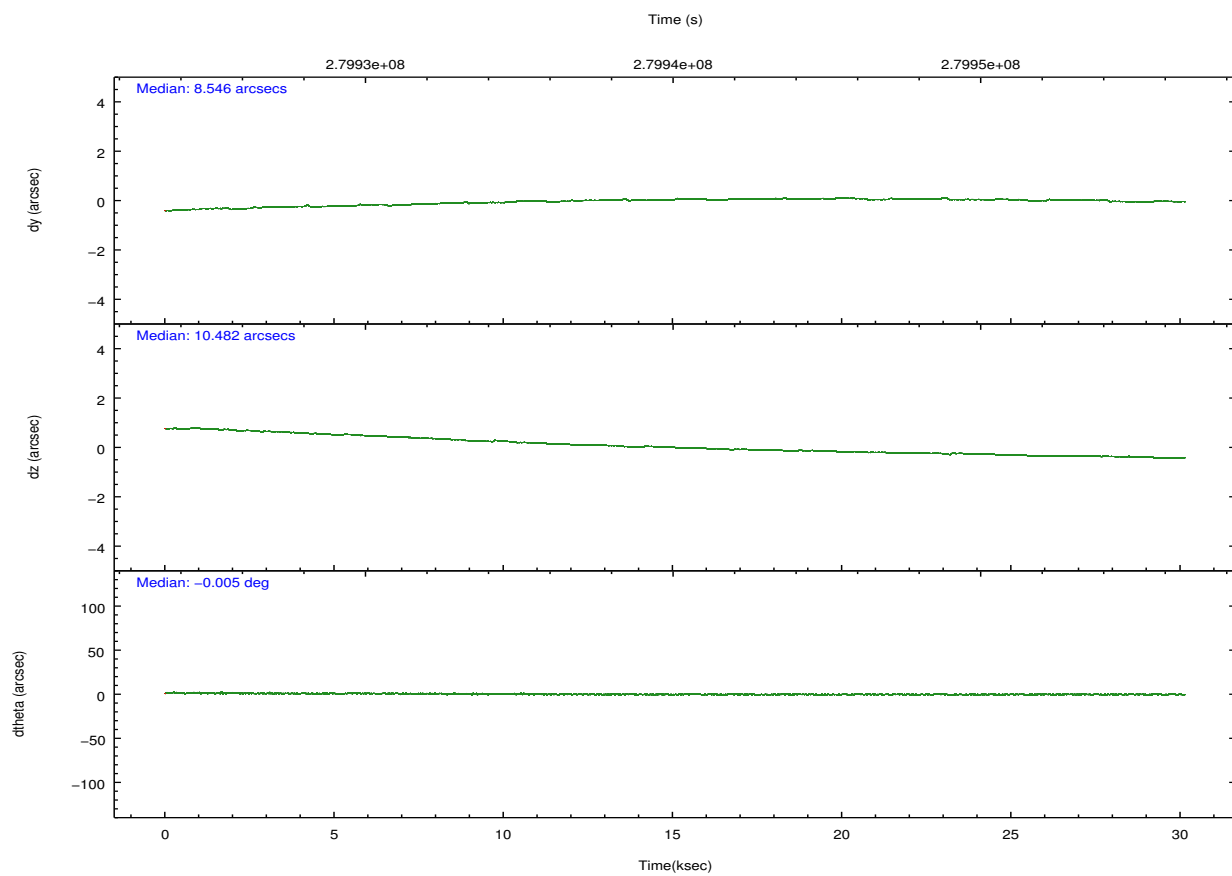
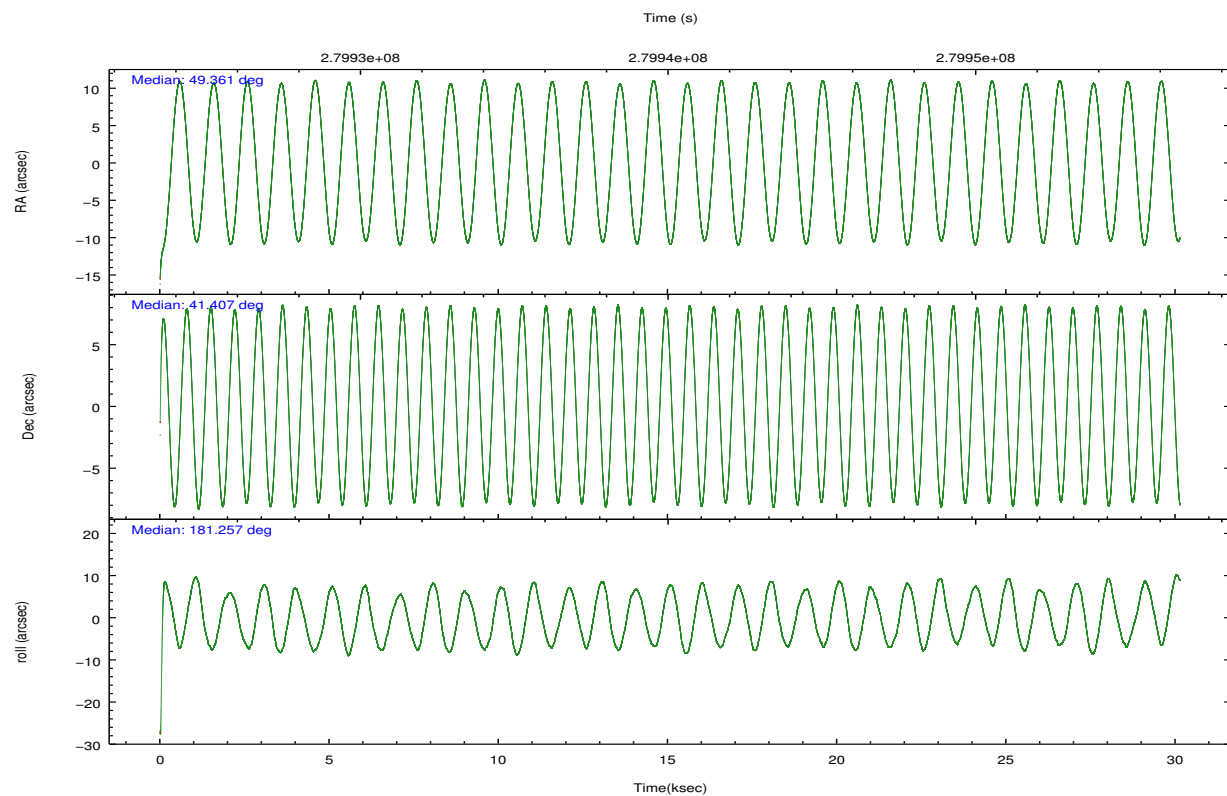
	ccd 2	ccd 3	ccd 5	ccd 6	ccd 7	ccd 8		ccd 2	ccd 3	ccd 5	ccd 6	ccd 7	ccd 8
level 1 events	264025	238493	340052	247330	285168	331053	grade 0 events	16242	22300	30423	19561	19454	52458
rejected events	232249	199368	163379	210258	139095	222794		6%	9%	8%	7%	6%	15%
rejected %	87%	83%	48%	85%	48%	67%	grade 1 events	188	195	588	154	316	399
								0%	0%	0%	0%	0%	0%
							grade 2 events	6387	6524	51403	6470	31816	20069
								2%	2%	15%	2%	11%	6%
							grade 3 events	2594	3071	7466	3035	14292	8854
								0%	1%	2%	1%	5%	2%
							grade 4 events	2663	2973	7313	3005	14459	8187
								1%	1%	2%	1%	5%	2%
							grade 5 events	7423	8818	25918	9228	27079	13408
								2%	3%	7%	3%	9%	4%
							grade 6 events	4269	4641	82387	5398	67841	19950
								1%	1%	24%	2%	23%	6%
							grade 7 events	224259	189971	134554	200479	109911	207728
								84%	79%	39%	81%	38%	62%

2.2 Compared Parameters

Parameter	Planned	Actual	Parameter	Planned	Actual
Instrument	ACIS	ACIS	Obspar format version number	7	7
Detector	ACIS-235678	ACIS-235678	Obspar file type	PREDICTED	ACTUAL
Grating	NONE	NONE	Obspar update status	NONE	UPDATED
Data mode	VFAINT	VFAINT	Number of optional ACIS chips dropped	0	0
Observation mode	POINTING	POINTING	On-chip summing requested	N	N
[deg] Pointing RA	49.391999	49.36118468299144	Subarray requested	NONE	NONE
[deg] Pointing Dec	41.421498	41.40706067600468	Alternating exposures requested	N	N
[deg] Pointing Roll	181.082265	181.2592577646915	[s] Primary exposure time	0.000000	3.2
[mm] SIM focus pos	-0.684267	-0.6828225247311905			
[mm] SIM defocus	0	0.001444936568705701			
[mm] SIM translation stage pos	-190.132523	-190.1400660498719			
[mm] SIM translation stage offset	0	0.00754346686406393			
[s] Observation start time (MET)	279925136.184000	279923890.4625			
Observation start date	2006-11-14T20:57:51	2006-11-14T20:38:10			
[s] Observation end time (MET)	279955136.184000	279955879.68901			
Observation end date	2006-11-15T05:17:51	2006-11-15T05:31:19			
Read mode	TIMED	TIMED			

2.3 Aspect



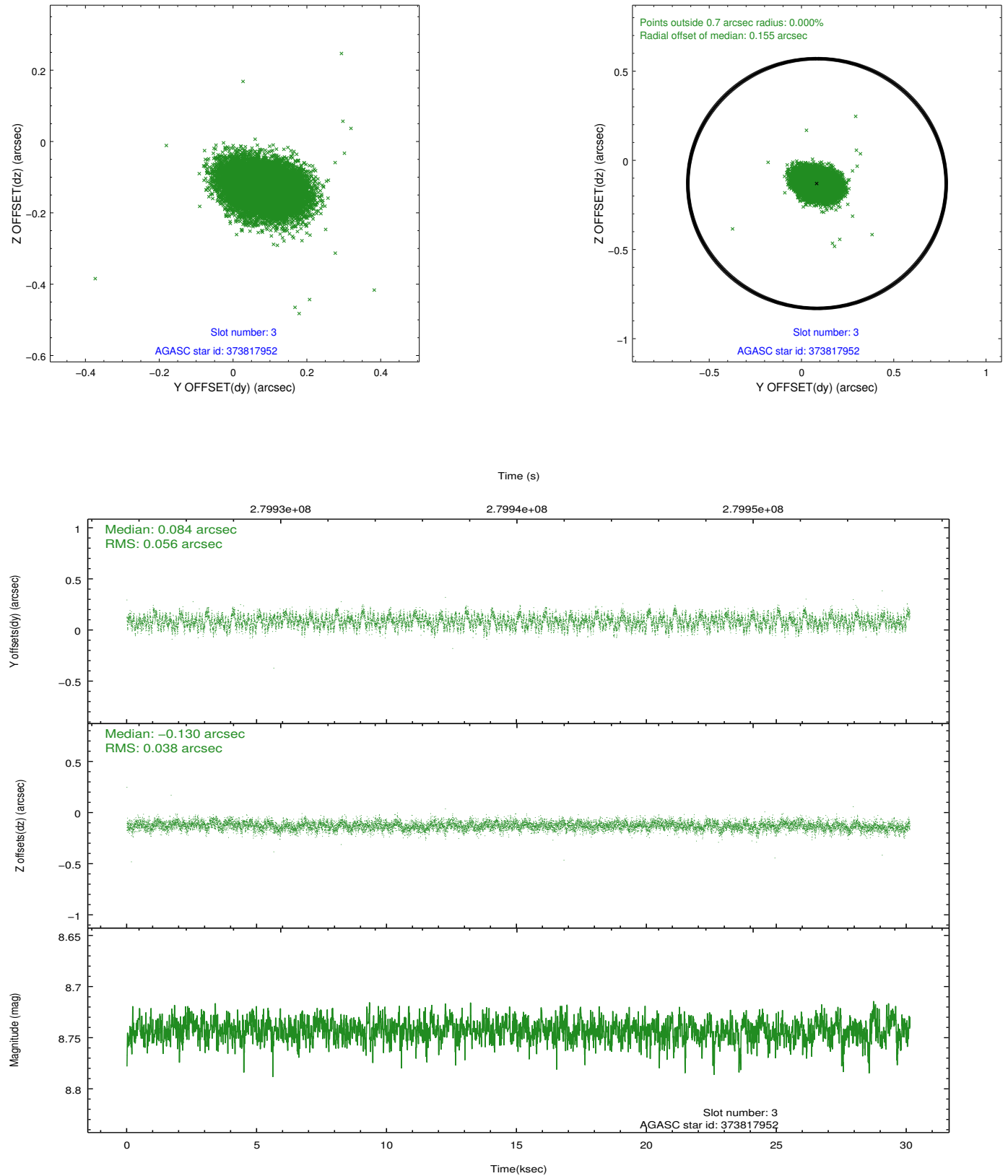


Slot Statistics

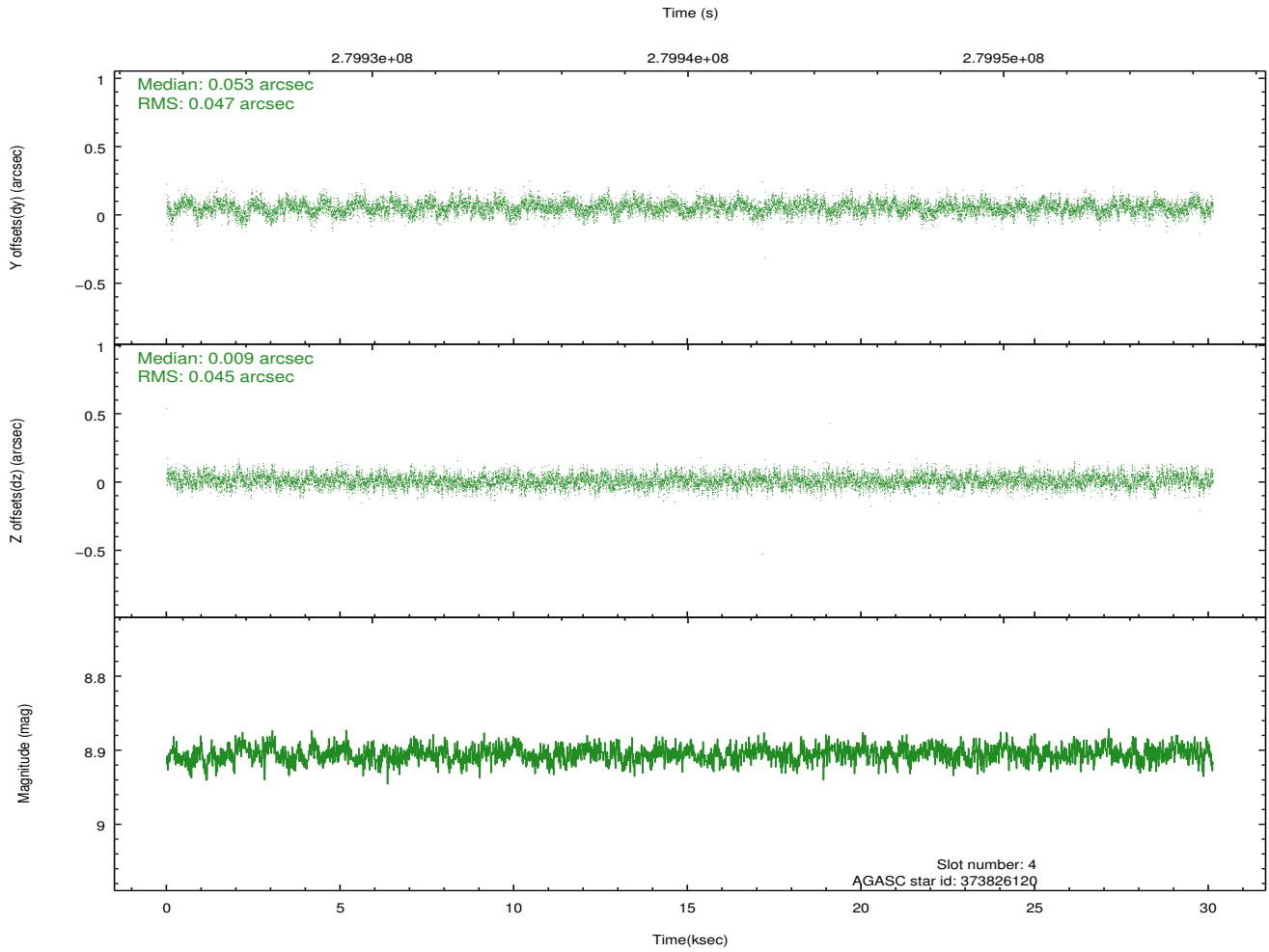
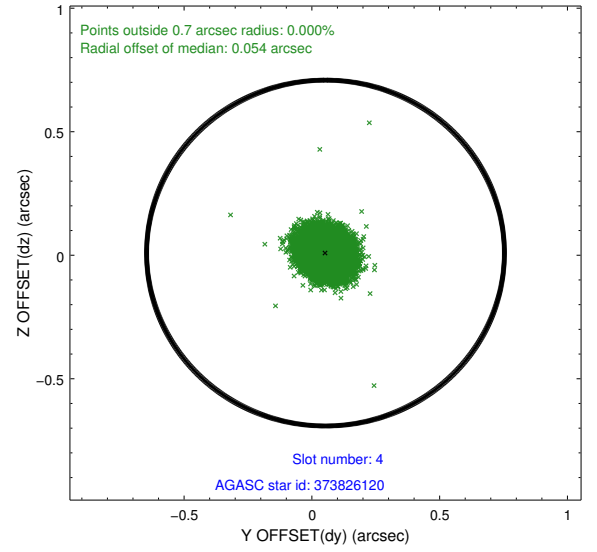
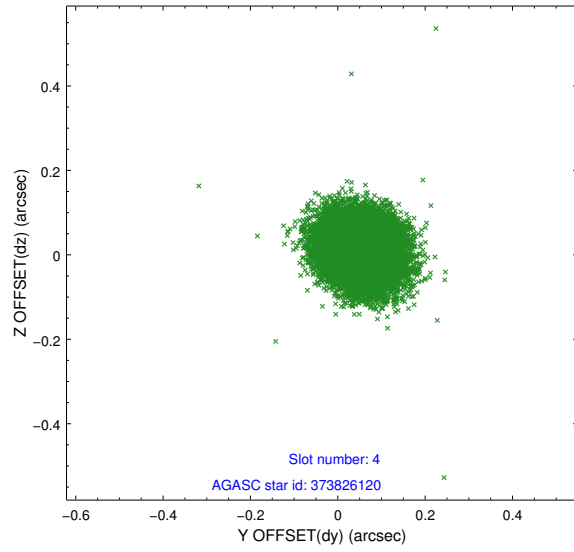
slot	status	id	mag	n_pts	med_dy	med_dz	dr1	dr2	ra	dec	mean_y	mean_z
0	FID	ACIS-S-2	7.11	7350	-0.041	-0.022	0.010	0.017	0.000000	0.000000	-761.28	-1731.85
1	FID	ACIS-S-4	7.21	7350	0.141	0.026	0.011	0.022	0.000000	0.000000	2152.10	176.66
2	FID	ACIS-S-5	7.23	7350	-0.130	0.005	0.009	0.016	0.000000	0.000000	-1814.16	170.31
3	GUIDE	373817952	8.74	14681	0.084	-0.130	0.072	0.117	49.913424	40.978510	-1386.66	1617.20
4	GUIDE	373826120	8.91	14690	0.053	0.009	0.068	0.111	49.738165	41.186341	-921.54	862.64
5	GUIDE	374345008	9.37	14683	0.005	0.011	0.093	0.151	48.768668	41.619367	1663.67	-749.15
6	GUIDE	376070040	8.41	14693	-0.073	0.036	0.068	0.109	50.072031	41.897206	-1854.12	-1684.74
7	GUIDE	374355168	8.58	14686	-0.072	0.076	0.086	0.136	48.517523	41.466988	2355.02	-219.61

2.4 Star Slots

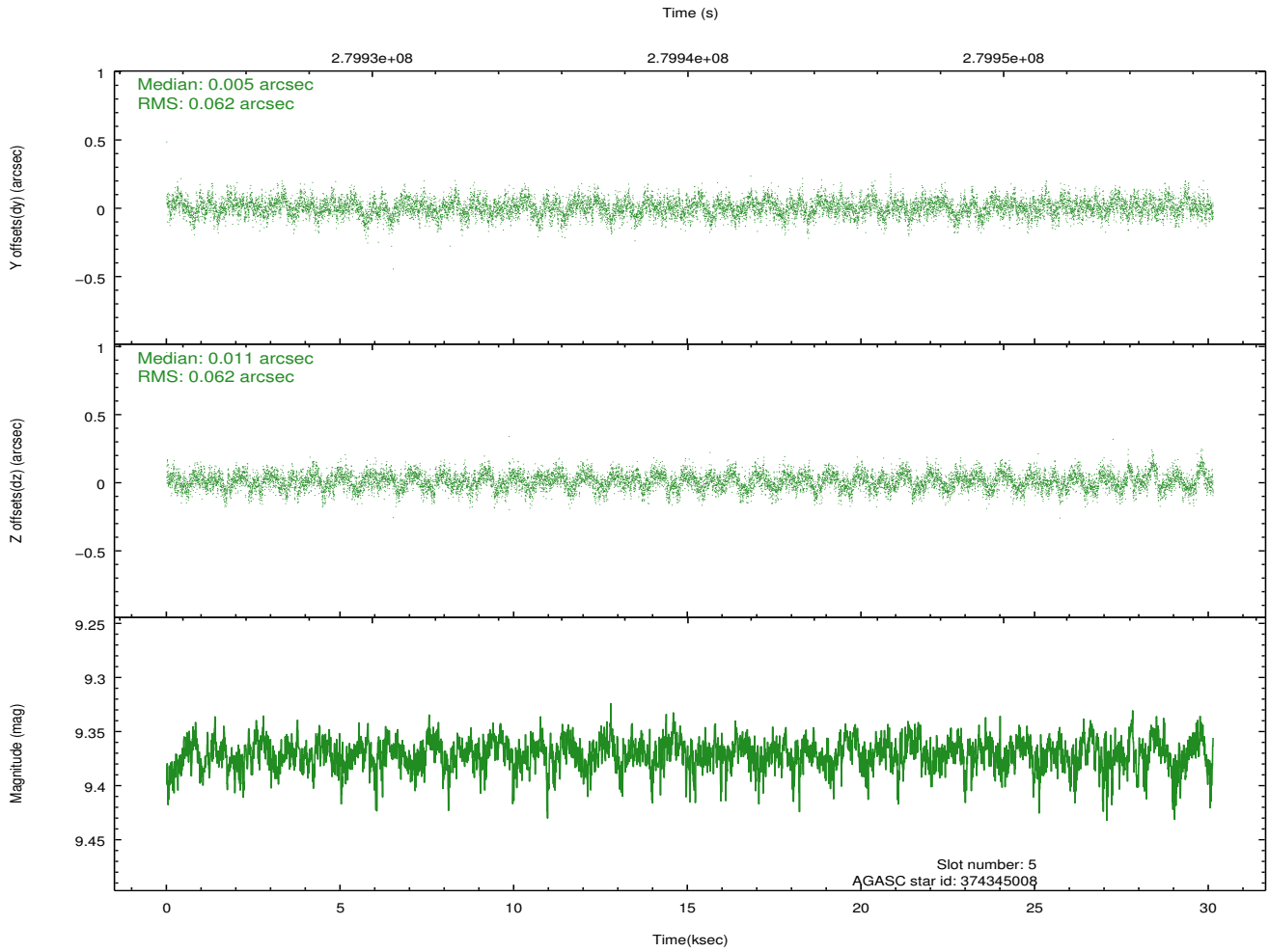
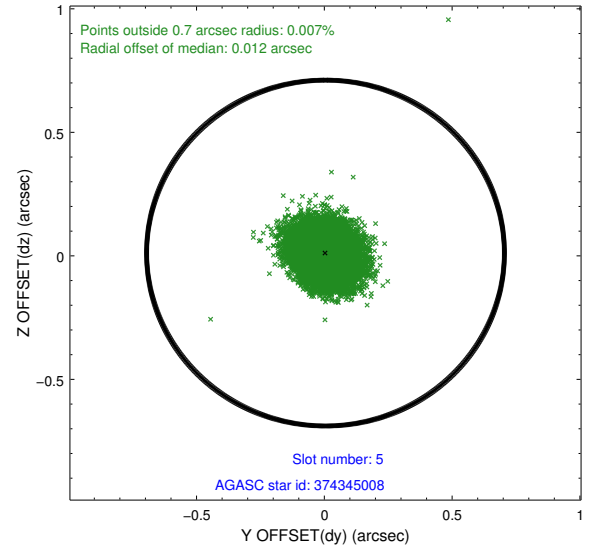
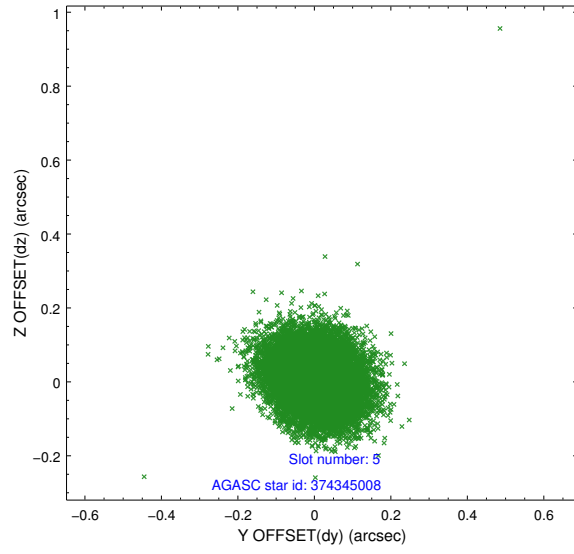
2.4.1 Slot 3



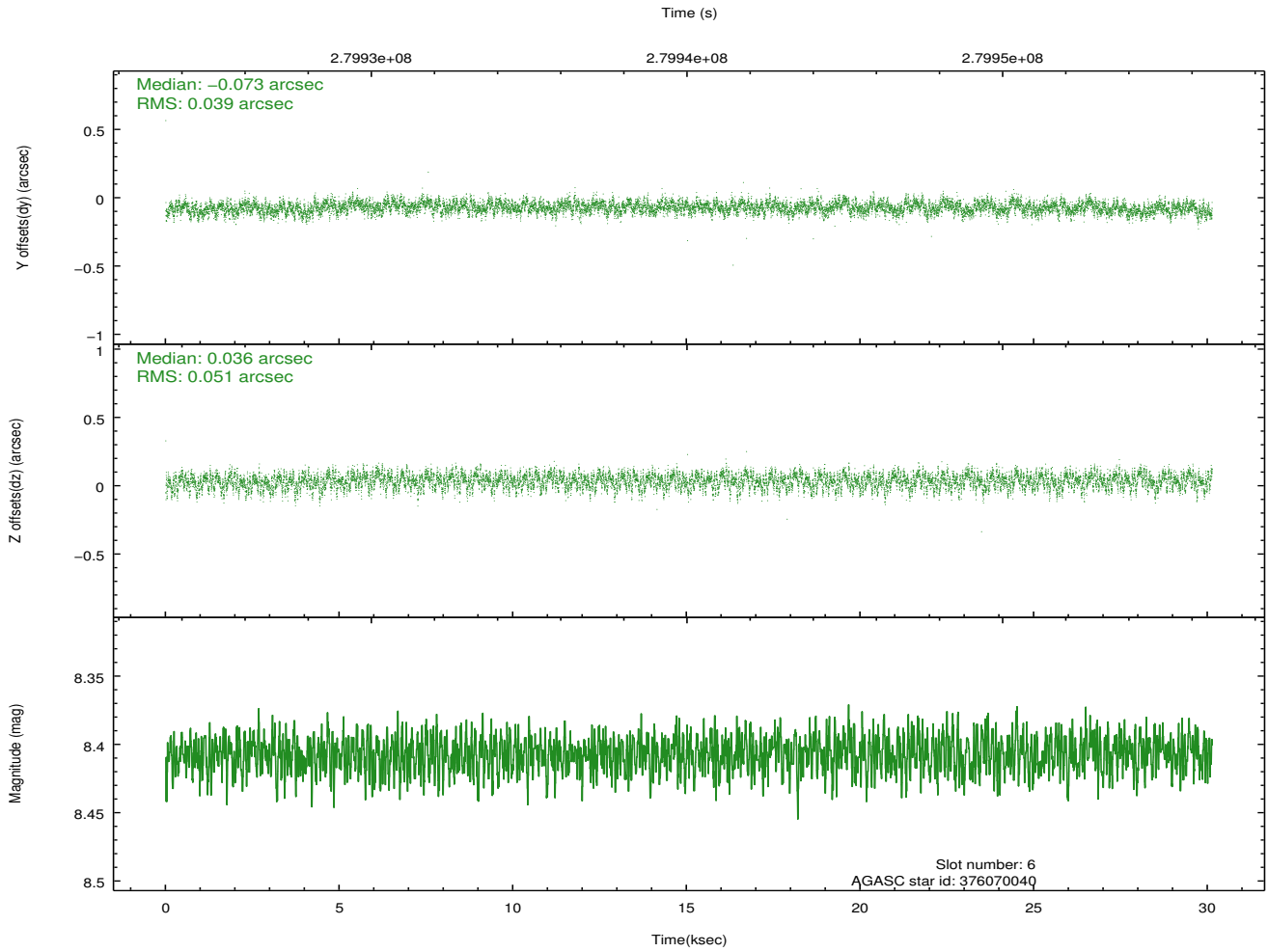
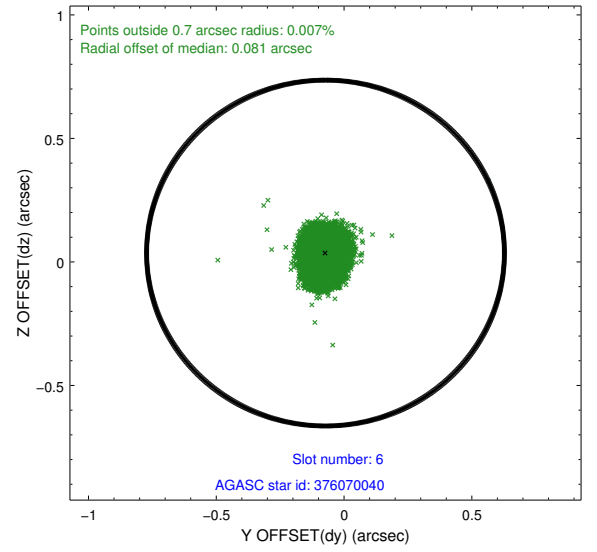
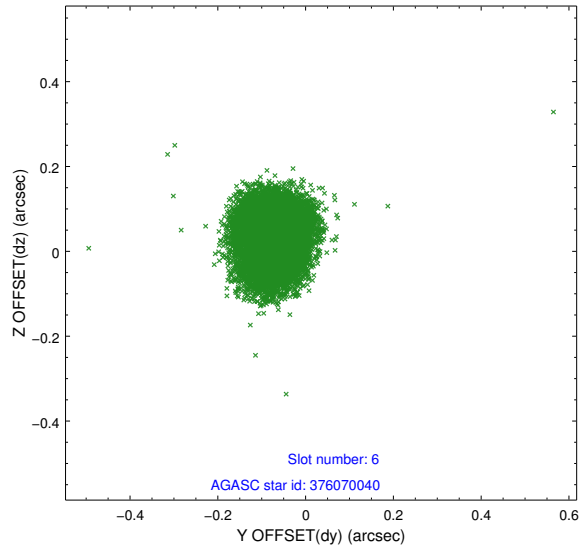
2.4.2 Slot 4



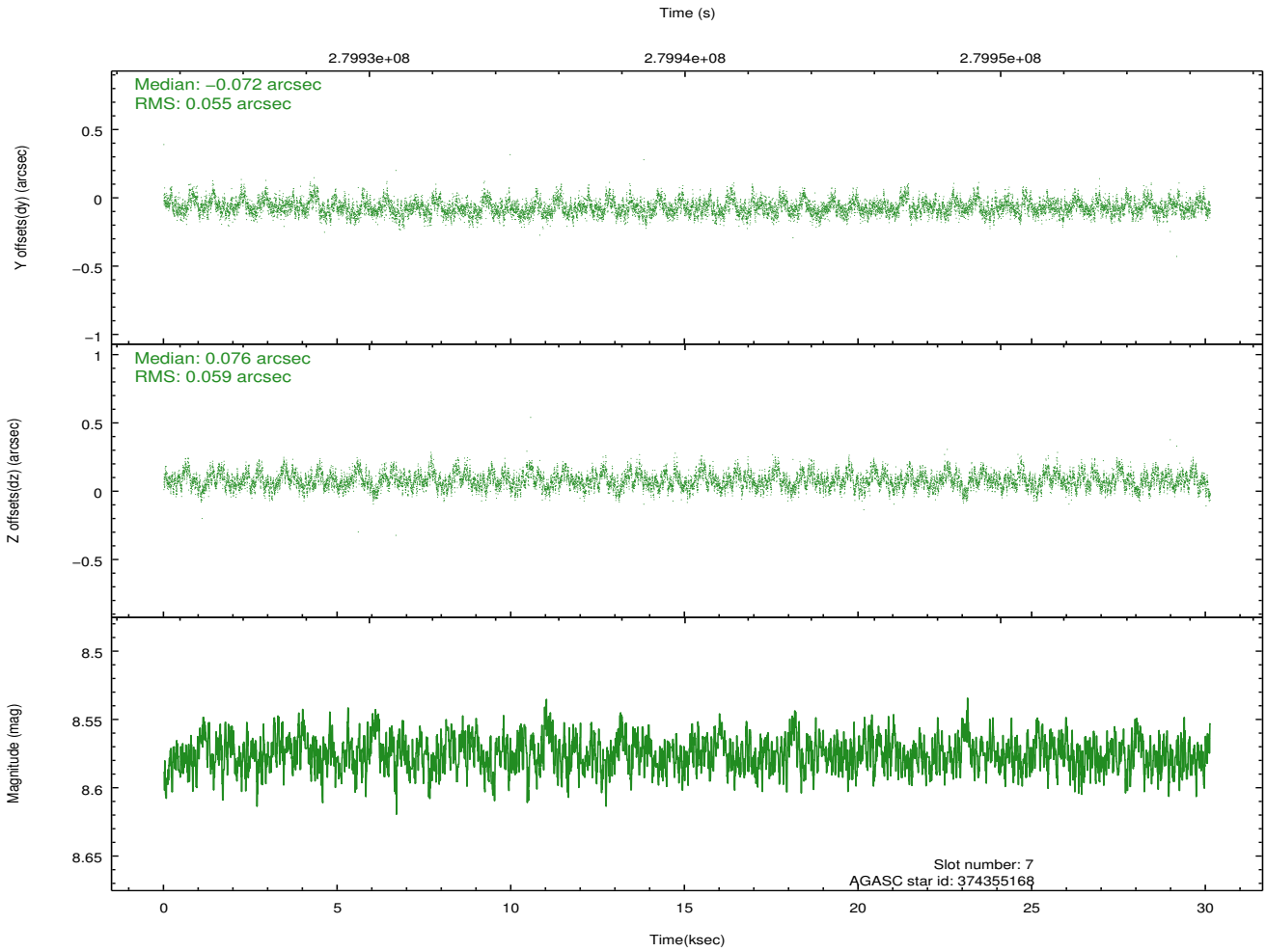
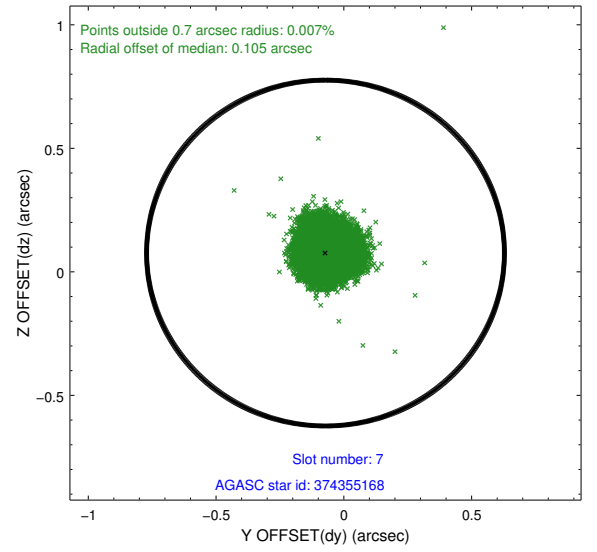
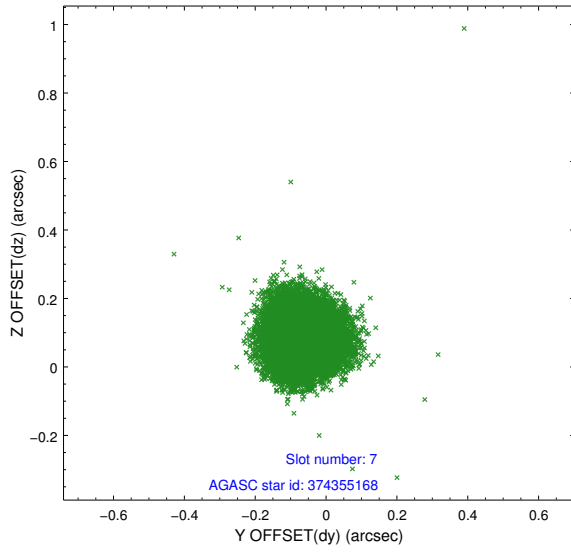
2.4.3 Slot 5



2.4.4 Slot 6

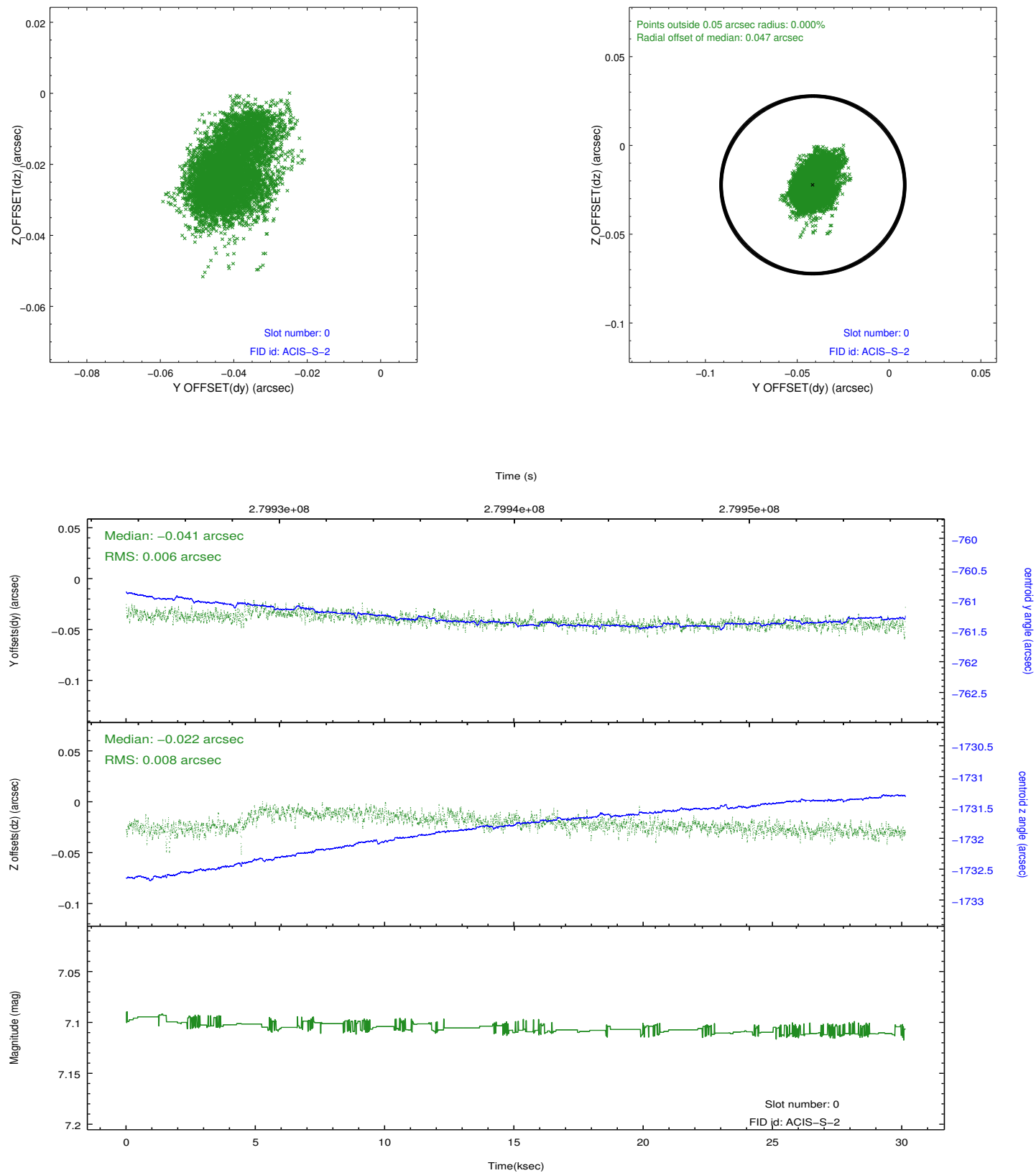


2.4.5 Slot 7

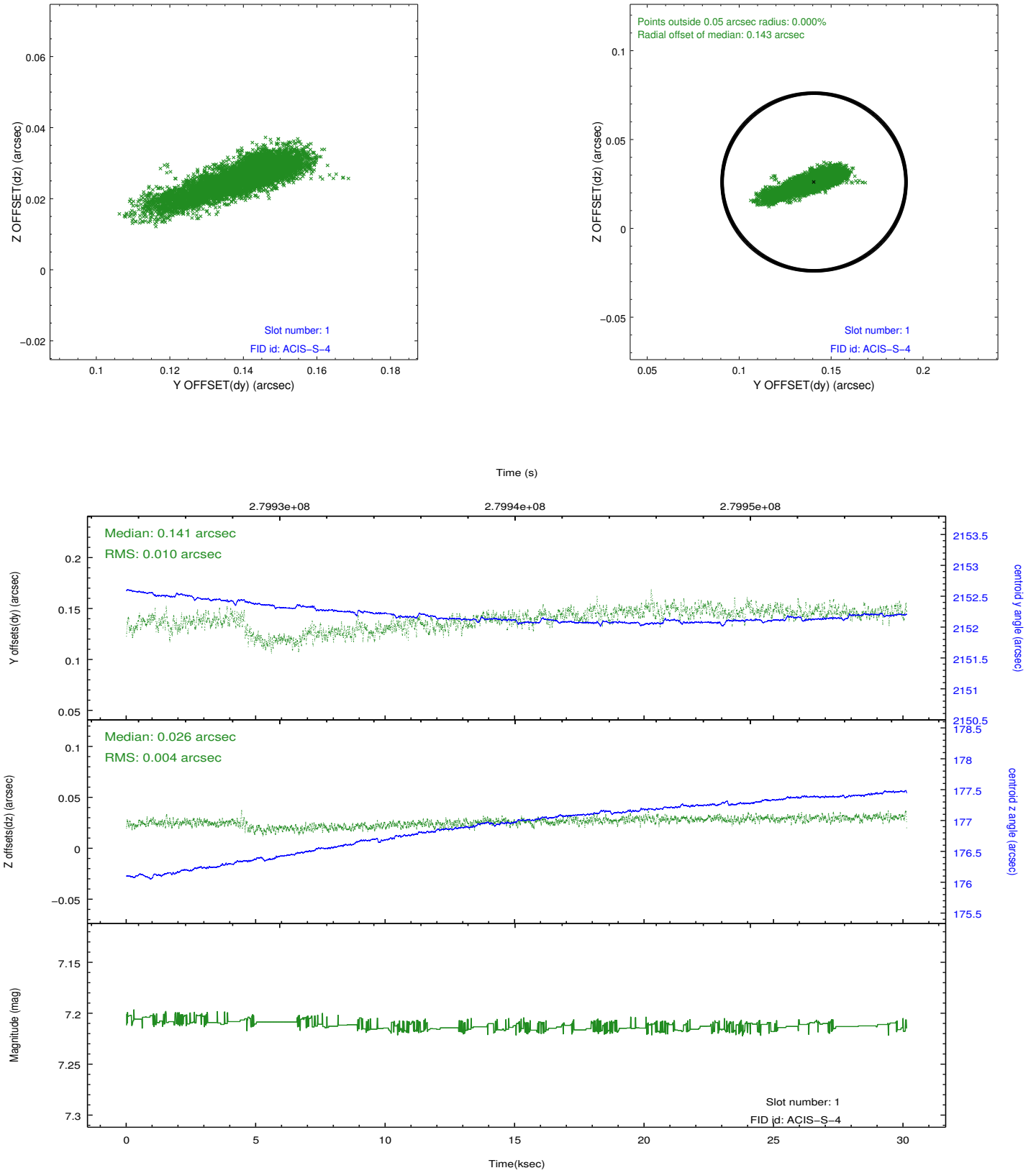


2.5 FID Slots

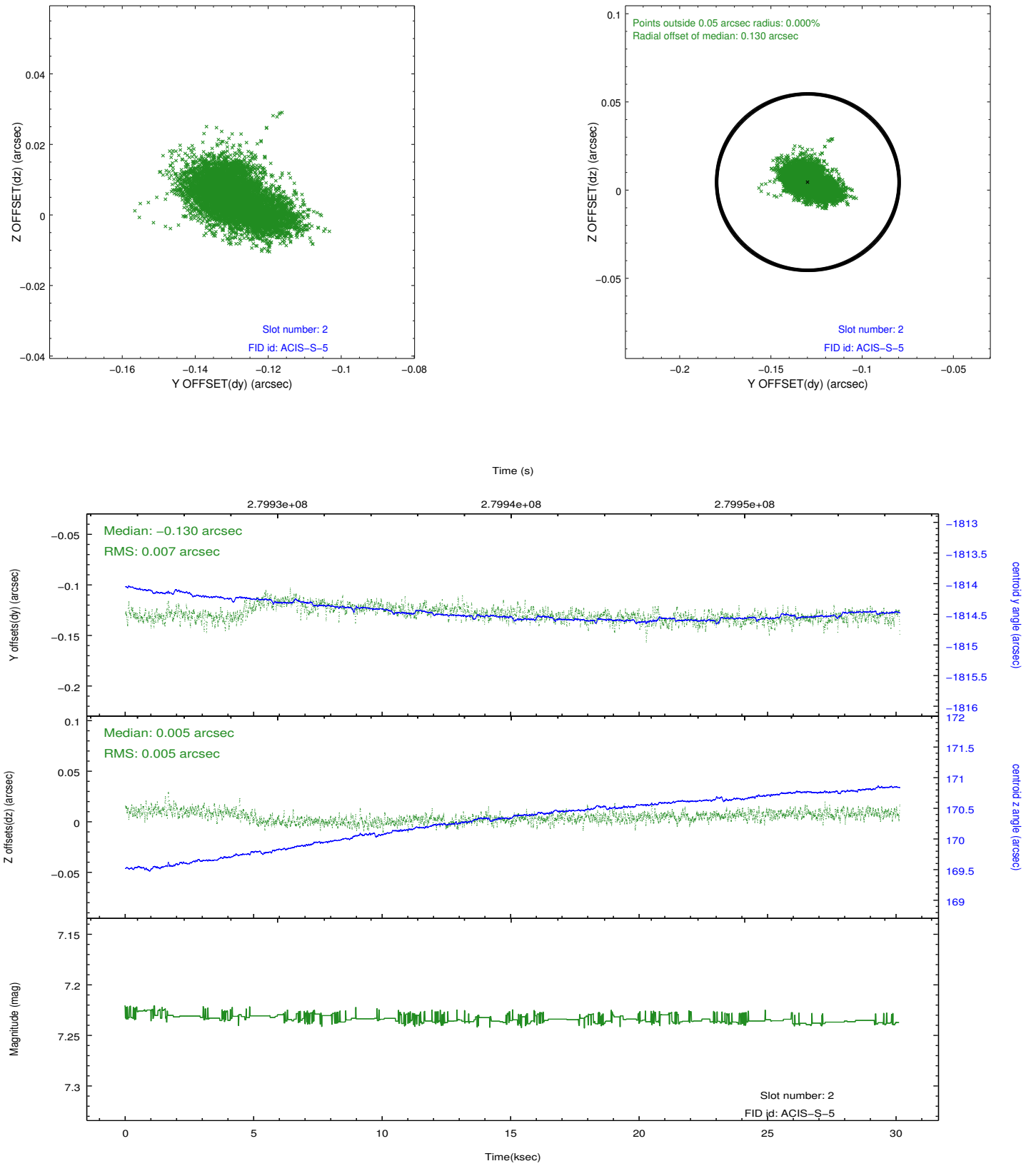
2.5.1 Slot 0



2.5.2 Slot 1



2.5.3 Slot 2



A Summary

A.1 Status

V&V Scientist	Beth Sundheim
V&V Date (YYYY-MM-DD)	2012.04.16
V&V Edition	1
V&V Disposition and Status	OK
V&V Charge Time	30.1247998

A.2 Comments