

# V&V Reference Report

## L2 ASCDS Version : 8.4.3

Observation 7343 - L2 Version 2  
Chandra X-Ray Center

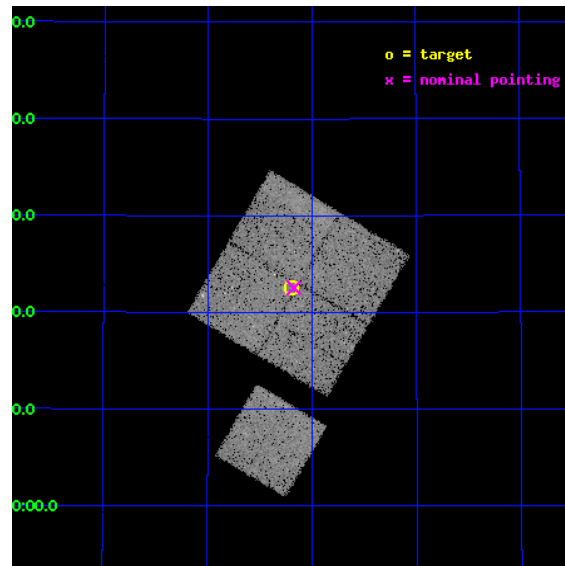
L2 Processing Date : Apr 4 2012

## Contents

<b>1</b>	<b>Front</b>	<b>2</b>
<b>2</b>	<b>OBI</b>	<b>3</b>
2.1	OBI . . . . .	3
2.1.1	Images . . . . .	3
2.1.2	Bias . . . . .	3
2.1.3	Parameters . . . . .	4
2.1.4	Events . . . . .	4
2.2	Compared Parameters . . . . .	5
2.3	Aspect . . . . .	6
2.4	Star Slots . . . . .	9
2.4.1	Slot 3 . . . . .	9
2.4.2	Slot 4 . . . . .	10
2.4.3	Slot 5 . . . . .	11
2.4.4	Slot 6 . . . . .	12
2.4.5	Slot 7 . . . . .	13
2.5	FID Slots . . . . .	14
2.5.1	Slot 0 . . . . .	14
2.5.2	Slot 1 . . . . .	15
2.5.3	Slot 2 . . . . .	16
<b>A</b>	<b>Summary</b>	<b>17</b>
A.1	Status . . . . .	17
A.2	Comments . . . . .	17

# 1 Front

seq_num	800566	Sequence number
obs_id	7343	Observation id
title	The Active Galaxy Population in a Supercluster at $z = 0.9$	Proposal
observer	Prof Lori Lubin	Principal investigator
object	SC1604+4323	Source name
dtcycle	0	&#160
cycle	P	events from which exps? Prim/Second/Both
ra_targ	241.05	Observer's specified target RA [deg]
dec_targ	43.3765	Observer's specified target Dec [deg]
ra_nom	241.04370565576	Nominal RA [deg]
dec_nom	43.375866000718	Nominal Dec [deg]
roll_nom	210.71300889792	Nominal Roll [deg]
revision	2	Processing version of data
ontime	19669.458991885	Sum of GTIs [s]
livetime	19412.463029711	Livetime [s]
ontime0	19666.318011552	Sum of GTIs [s]
ontime1	19663.177081168	Sum of GTIs [s]
ontime2	19669.458961993	Sum of GTIs [s]
ontime3	19669.458991885	Sum of GTIs [s]
ontime6	19669.458961964	Sum of GTIs [s]
l2events	62647	Number of level 2 events

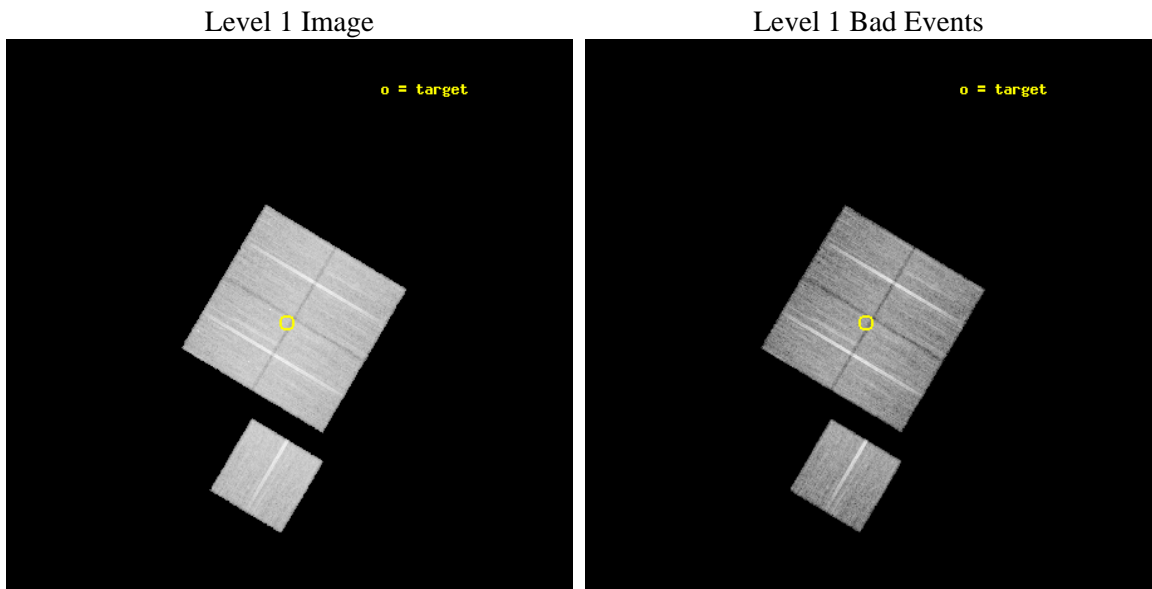




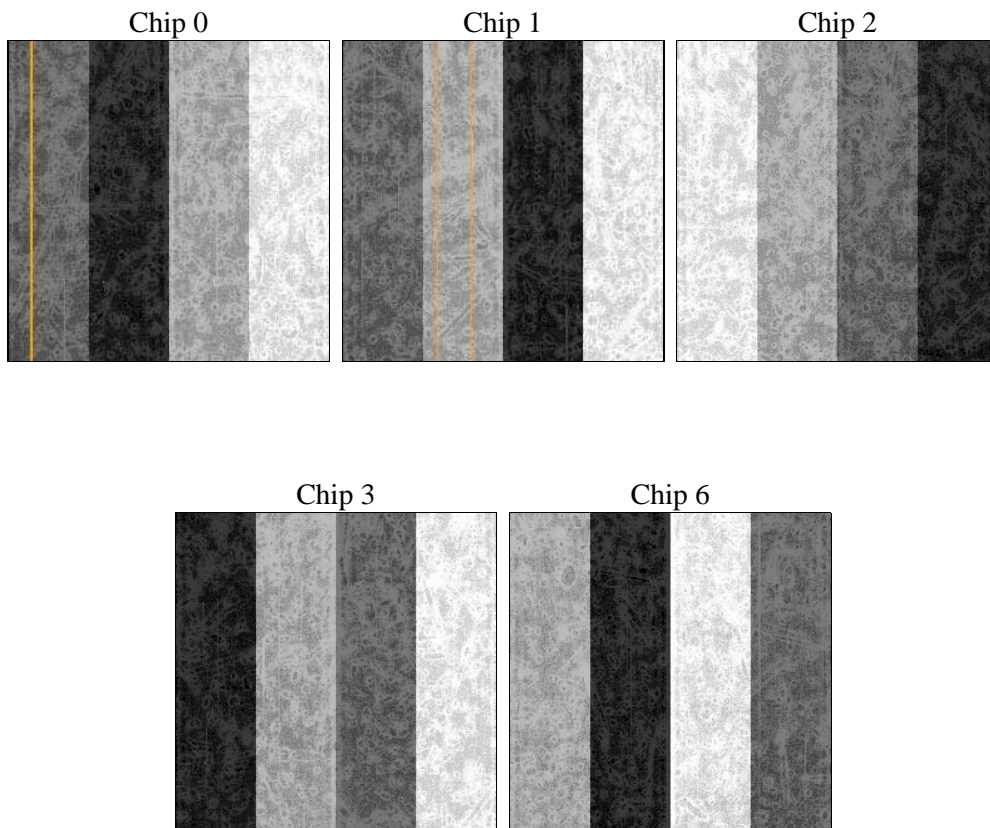
## 2 OBI

### 2.1 OBI

#### 2.1.1 Images



#### 2.1.2 Bias



### 2.1.3 Parameters

obi_num	0	Obi number	sched_exp_time	19500.000000	[s] Scheduled observation exposure time
ascdsver	8.4.3.1	Processing system revision	ontime	19669.458991885	Sum of GTIs [s]
caldsver	4.4.9	&#160	ontime0	19666.318011552	Sum of GTIs [s]
date	2012-04-04T00:58:35	Date and time of file creation	ontime1	19663.177081168	Sum of GTIs [s]
revision	2	Processing version of data	ontime2	19669.458961993	Sum of GTIs [s]
			ontime3	19669.458991885	Sum of GTIs [s]
			ontime6	19669.458961964	Sum of GTIs [s]
			l1events	771878	Number of level 1 events

### 2.1.4 Events

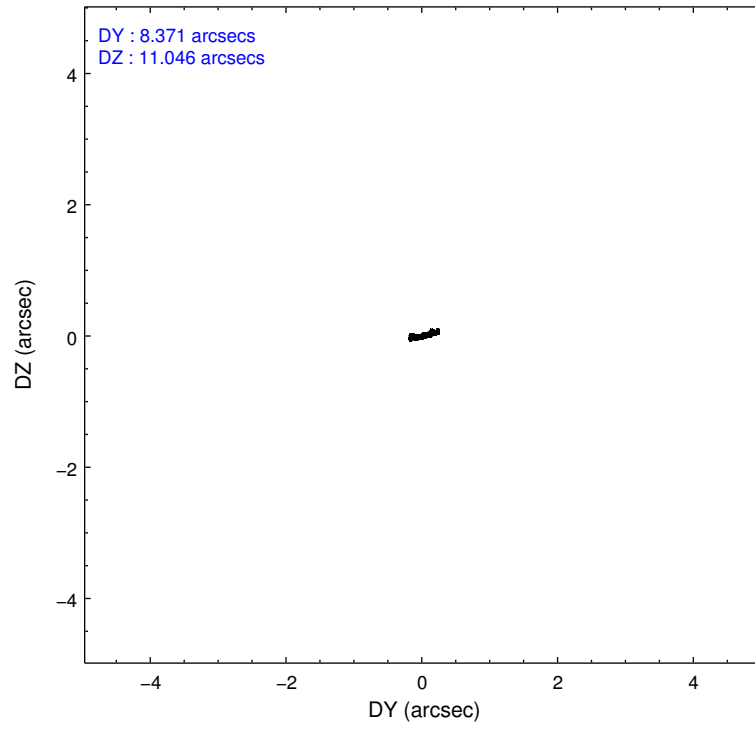
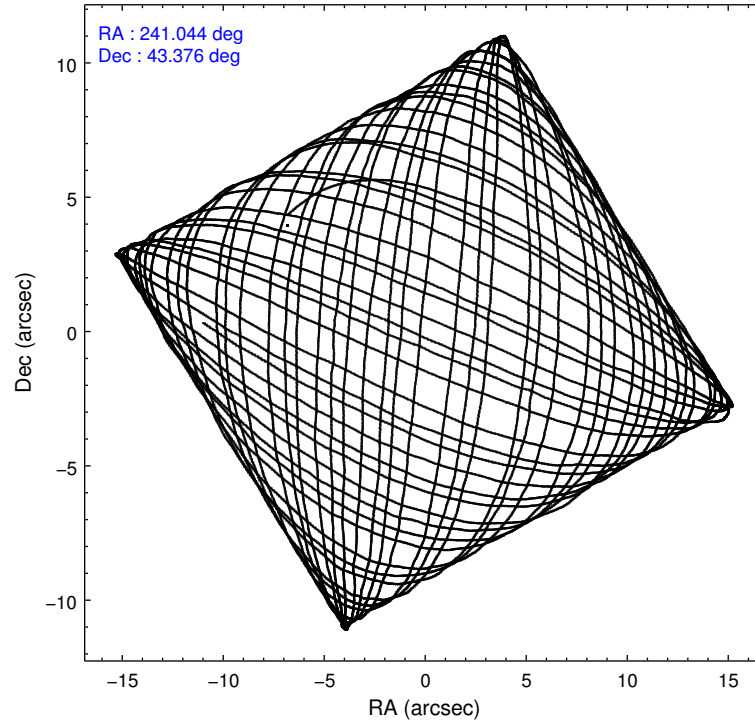
	ccd 0	ccd 1	ccd 2	ccd 3	ccd 6
level 1 events	149531	142965	163134	158201	158047
rejected events	134803	126501	148455	143637	142806
rejected %	90%	88%	91%	90%	90%

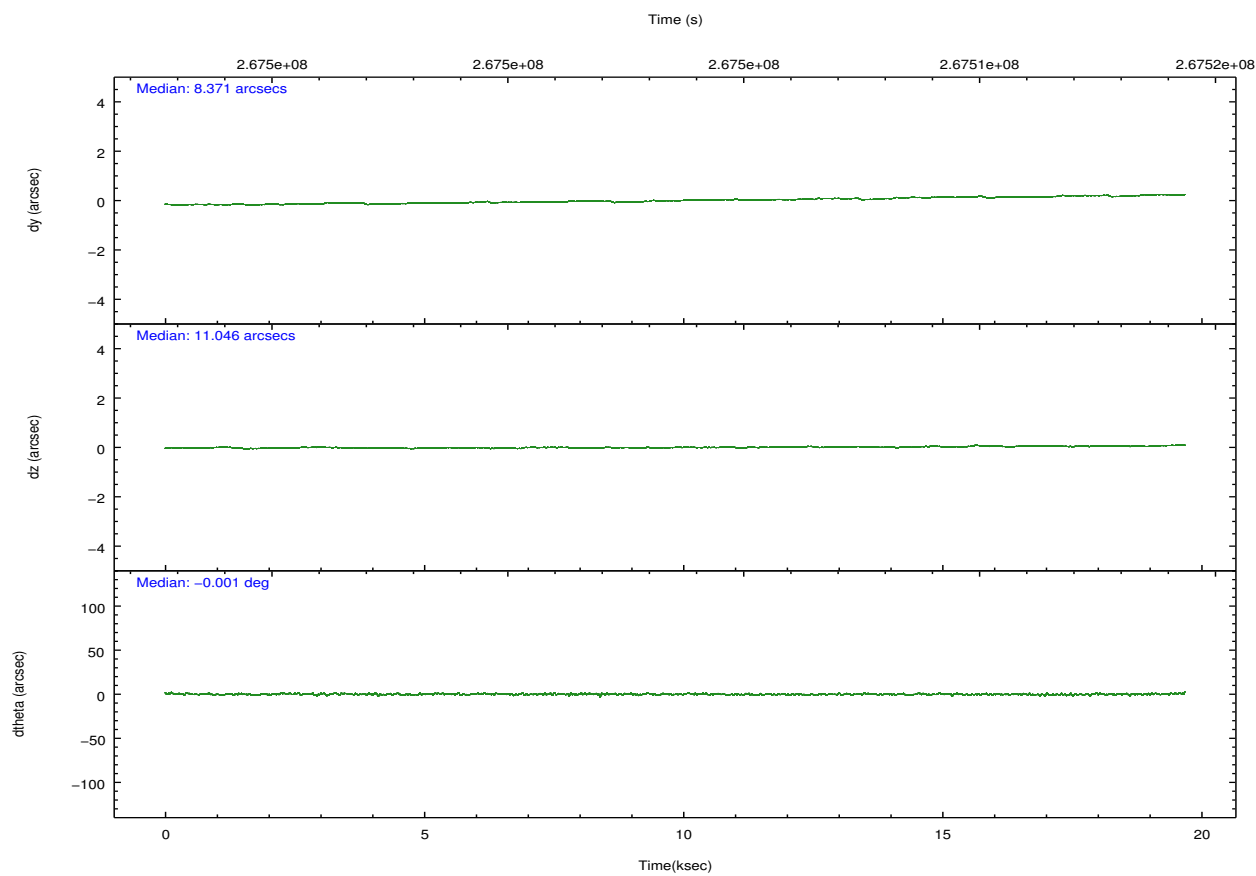
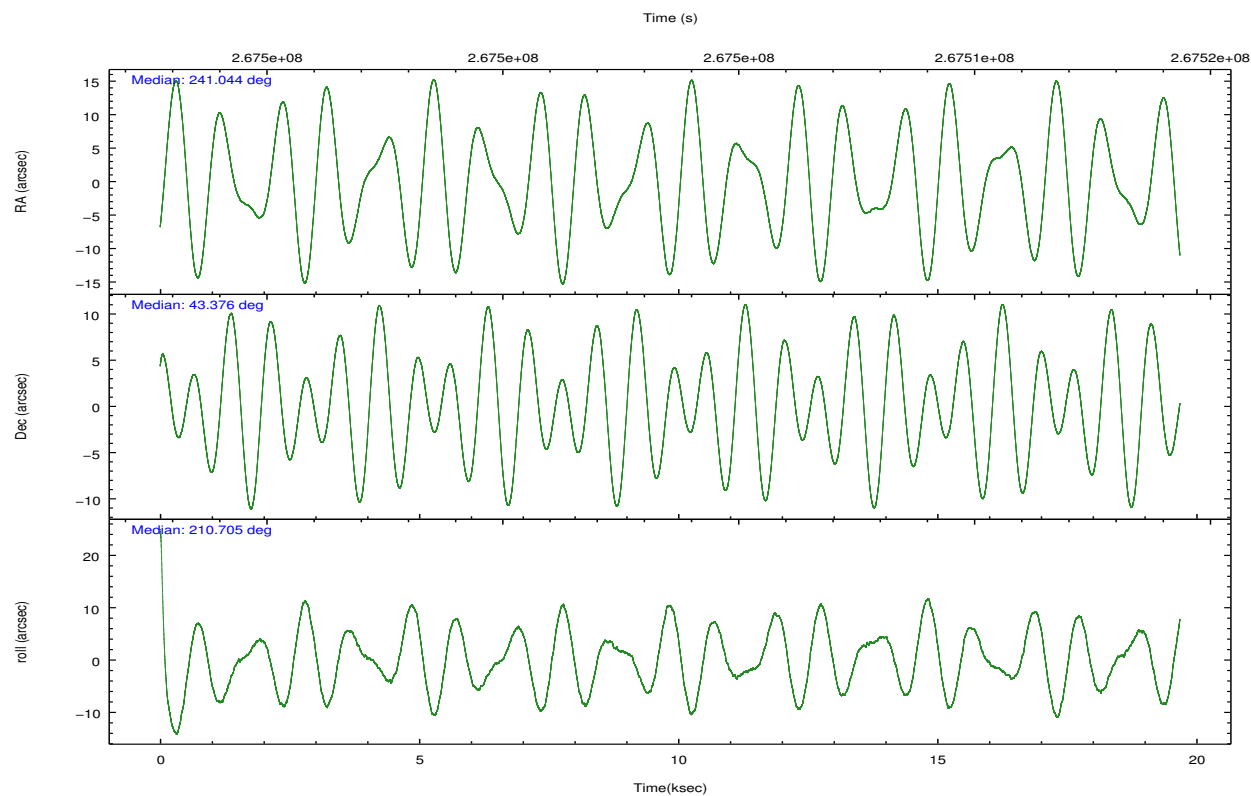
	ccd 0	ccd 1	ccd 2	ccd 3	ccd 6
grade 0 events	5257	5950	5372	5466	5362
	3%	4%	3%	3%	3%
grade 1 events	79	69	85	95	64
	0%	0%	0%	0%	0%
grade 2 events	3626	3682	3704	3299	3464
	2%	2%	2%	2%	2%
grade 3 events	1722	1951	1587	1680	1822
	1%	1%	0%	1%	1%
grade 4 events	1631	1945	1714	1688	1711
	1%	1%	1%	1%	1%
grade 5 events	5224	5715	5194	6165	5823
	3%	3%	3%	3%	3%
grade 6 events	2956	3447	2747	2854	3384
	1%	2%	1%	1%	2%
grade 7 events	129036	120206	142731	136954	136417
	86%	84%	87%	86%	86%

## 2.2 Compared Parameters

Parameter	Planned	Actual	Parameter	Planned	Actual
Instrument	ACIS	ACIS	Obspar format version number	7	7
Detector	ACIS-01236	ACIS-01236	Obspar file type	PREDICTED	ACTUAL
Grating	NONE	NONE	Obspar update status	NONE	UPDATED
Data mode	VFAINT	VFAINT	Number of optional ACIS chips dropped	0	0
Observation mode	POINTING	POINTING	On-chip summing requested	N	N
[deg] Pointing RA	241.061988	241.0437056557645	Subarray requested	NONE	NONE
[deg] Pointing Dec	43.399819	43.37586600071801	Alternating exposures requested	N	N
[deg] Pointing Roll	210.491762	210.7130088979212	[s] Primary exposure time	0.000000	3.1
[mm] SIM focus pos	-0.782348	-0.7809083437167272			
[mm] SIM defocus	0	0.001439871863259334			
[mm] SIM translation stage pos	-233.592463	-233.5874344608287			
[mm] SIM translation stage offset	0	-0.005018542100998502			
[s] Observation start time (MET)	267493885.184000	267492443.87815			
Observation start date	2006-06-23T23:50:20	2006-06-23T23:27:23			
[s] Observation end time (MET)	267513385.184000	267514616.67918			
Observation end date	2006-06-24T05:15:20	2006-06-24T05:36:56			
Read mode	TIMED	TIMED			

## 2.3 Aspect



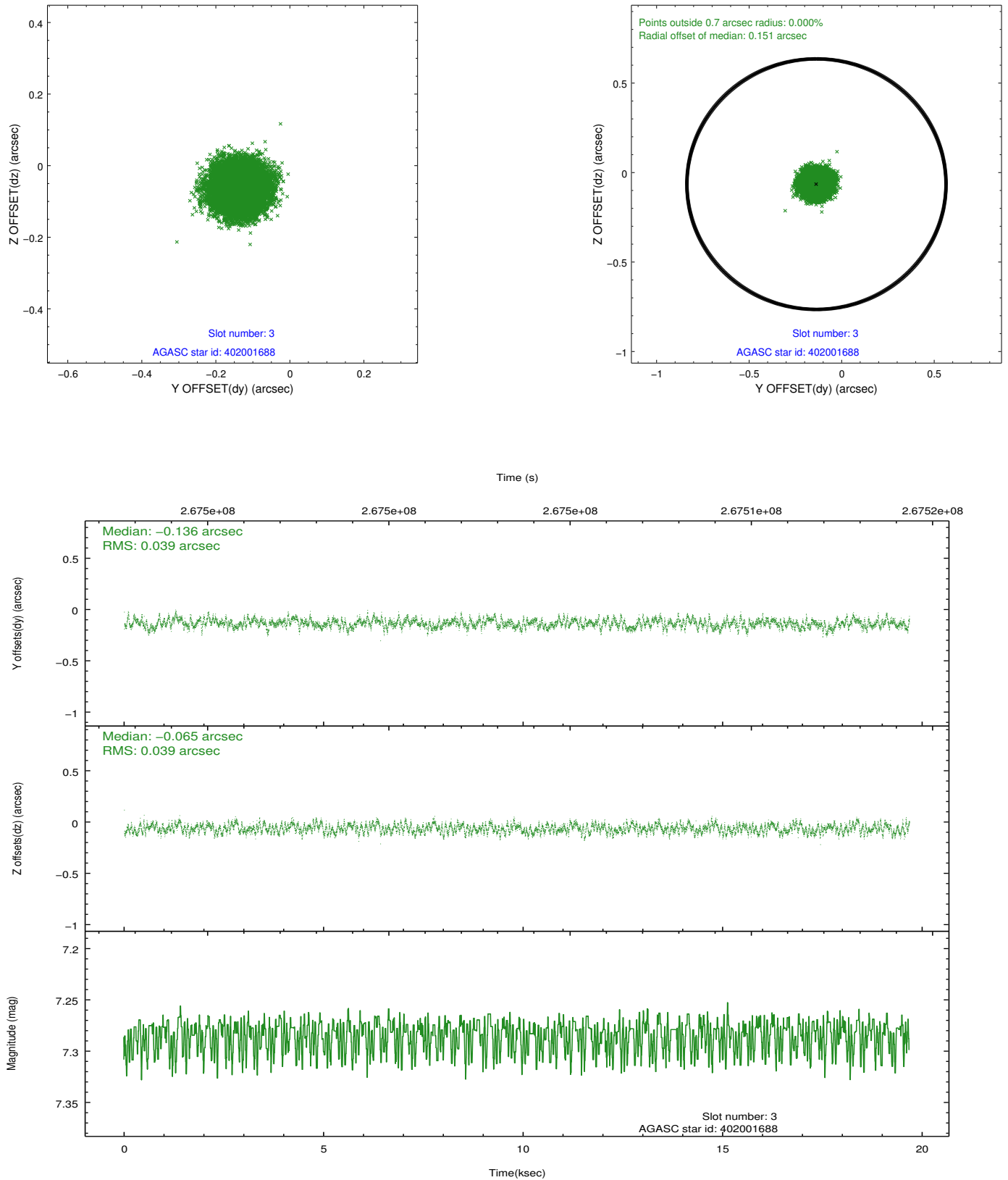


### Slot Statistics

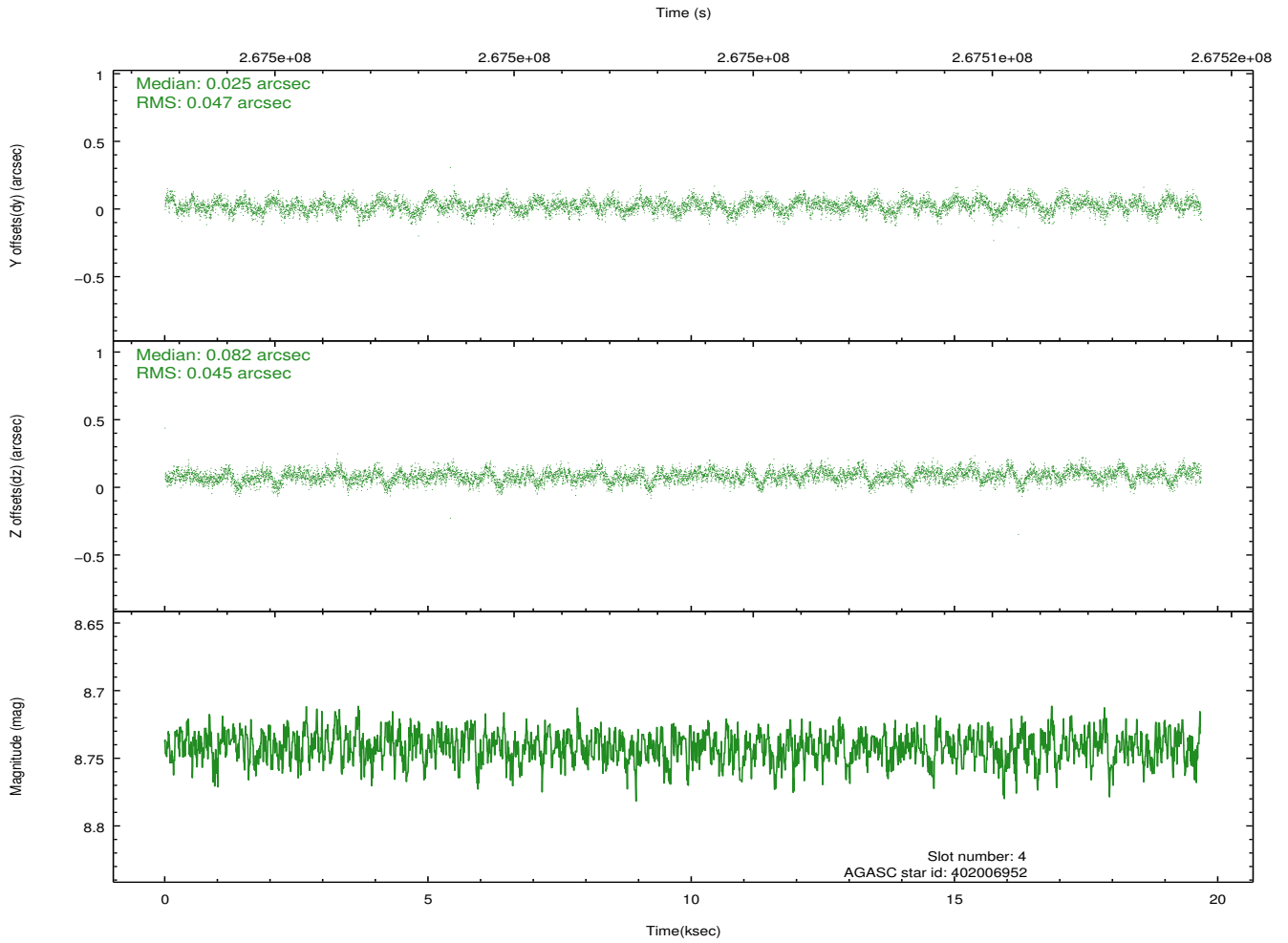
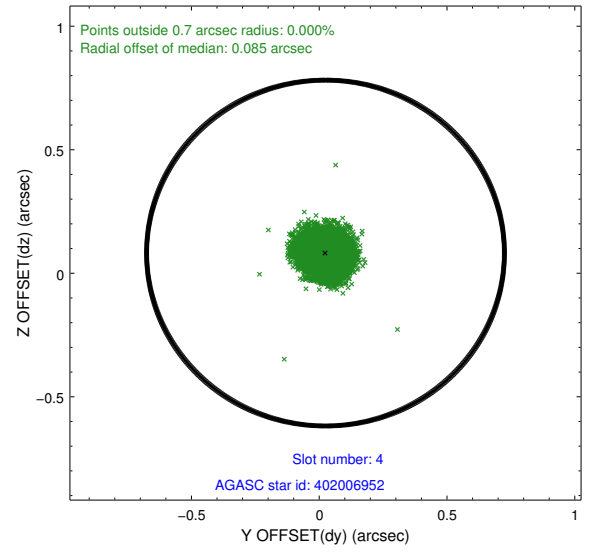
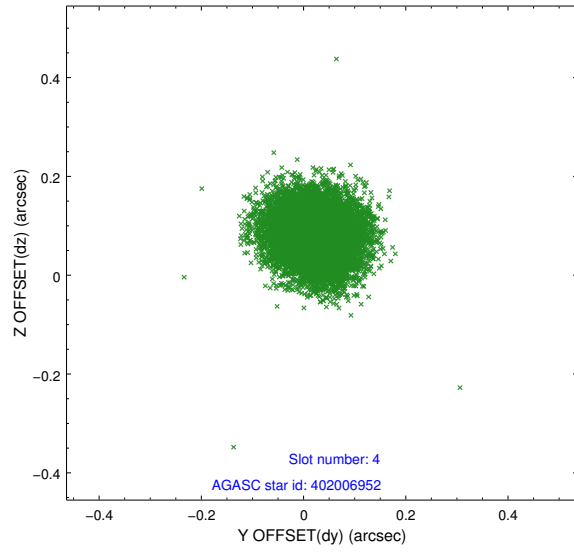
slot	status	id	mag	n_pts	med_dy	med_dz	dr1	dr2	ra	dec	mean_y	mean_z
0	FID	ACIS-I-2	7.14	4800	-0.086	-0.093	0.010	0.017	0.000000	0.000000	-763.01	-840.99
1	FID	ACIS-I-4	7.17	4800	0.203	0.077	0.009	0.015	0.000000	0.000000	2151.28	1065.21
2	FID	ACIS-I-5	7.22	4800	-0.218	0.085	0.010	0.016	0.000000	0.000000	-1816.69	1063.34
3	GUIDE	402001688	7.28	9598	-0.136	-0.065	0.061	0.092	241.364067	43.719053	-1260.71	-592.81
4	GUIDE	402006952	8.74	9598	0.025	0.082	0.070	0.111	240.778900	42.616928	2075.83	2047.46
5	GUIDE	402007168	8.26	9595	0.028	-0.022	0.060	0.099	240.453077	43.473225	1234.70	-1039.33
6	GUIDE	402008032	9.14	9557	0.104	-0.027	0.079	0.131	240.713470	43.039771	1447.60	649.95
7	GUIDE	402009136	9.13	9597	-0.019	0.034	0.085	0.134	240.344834	43.795711	879.47	-2180.36

## 2.4 Star Slots

### 2.4.1 Slot 3

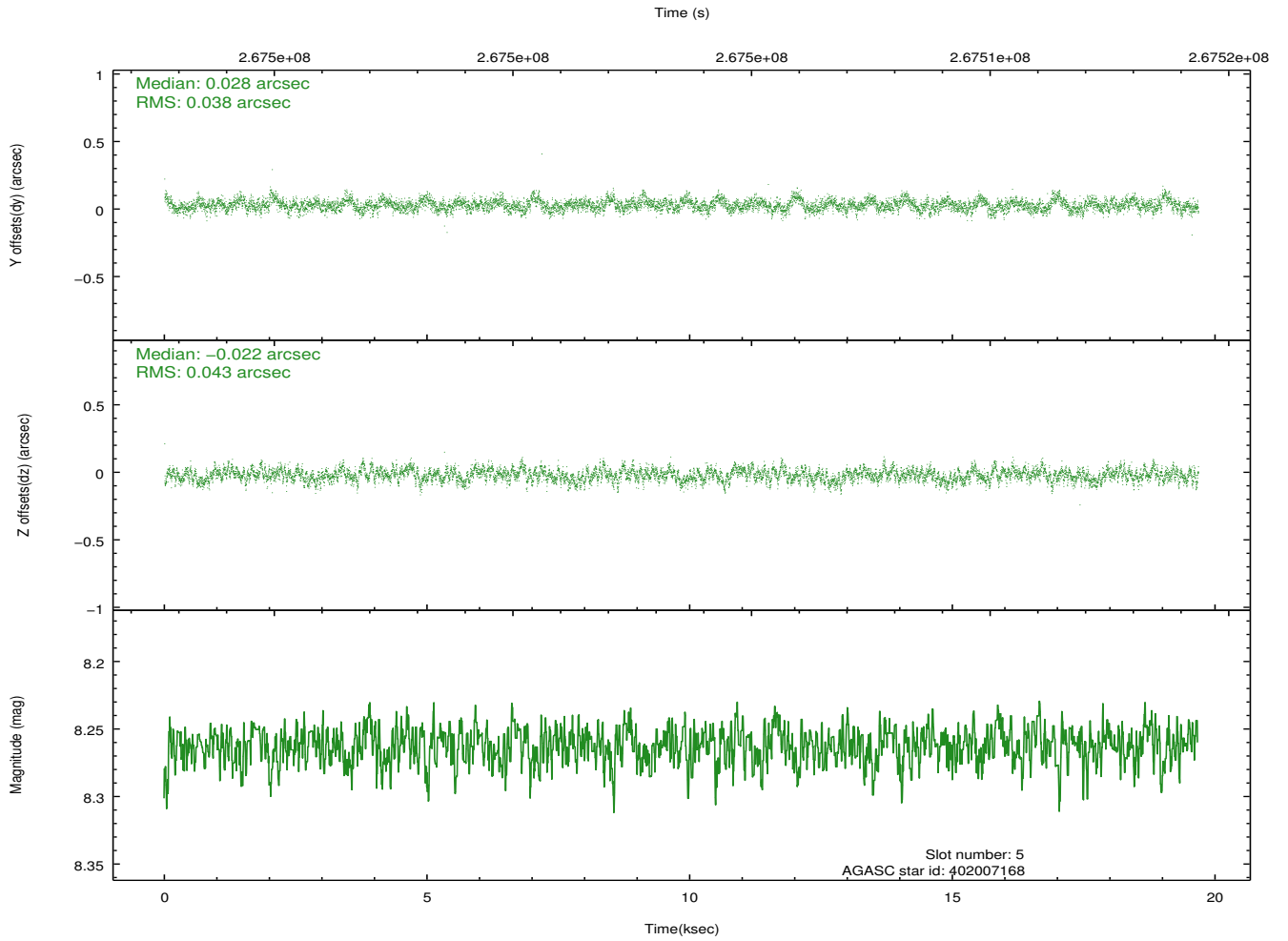
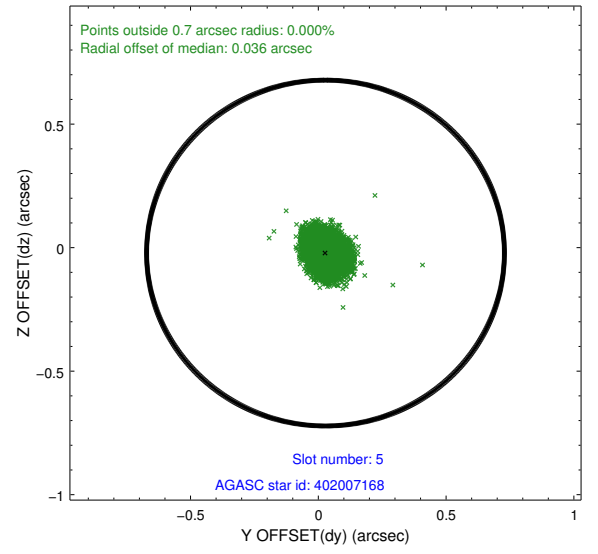
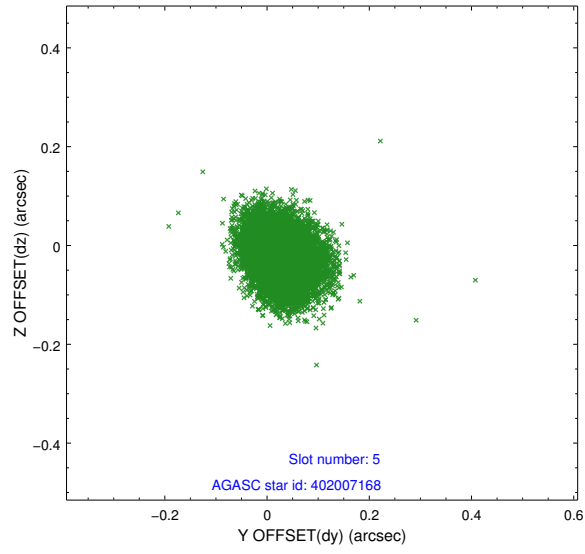


## 2.4.2 Slot 4

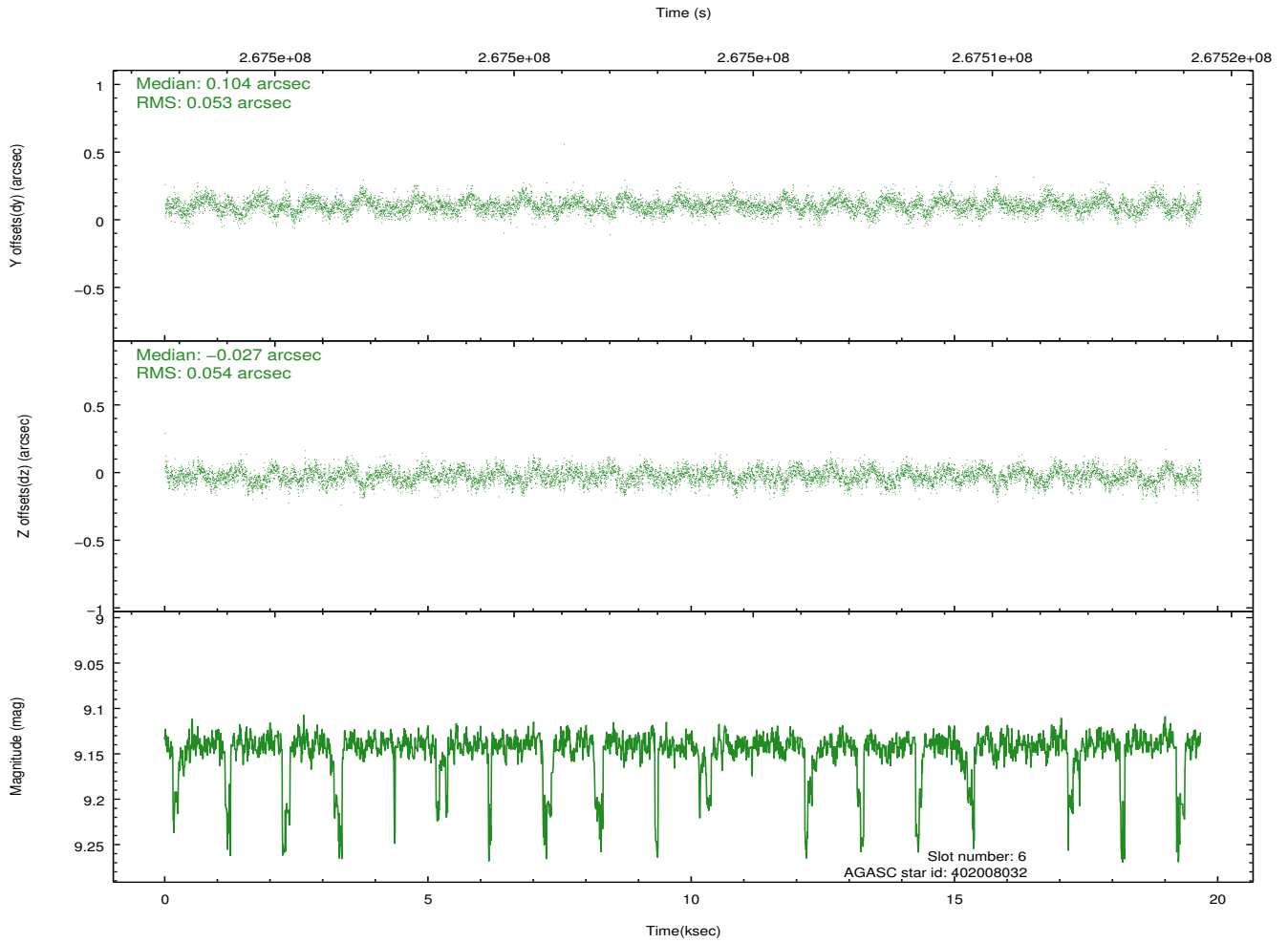
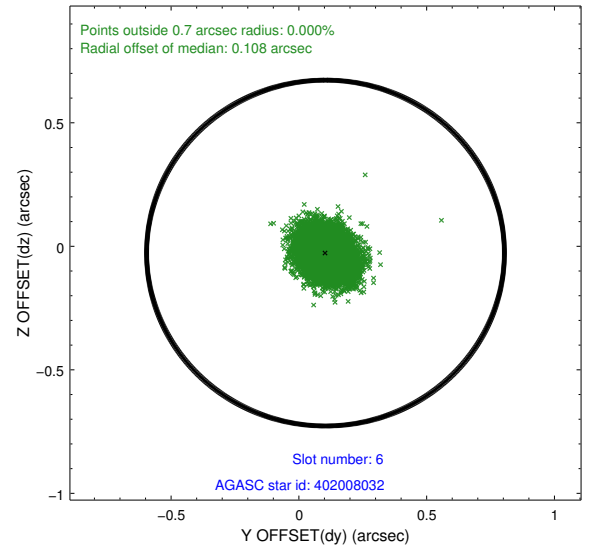
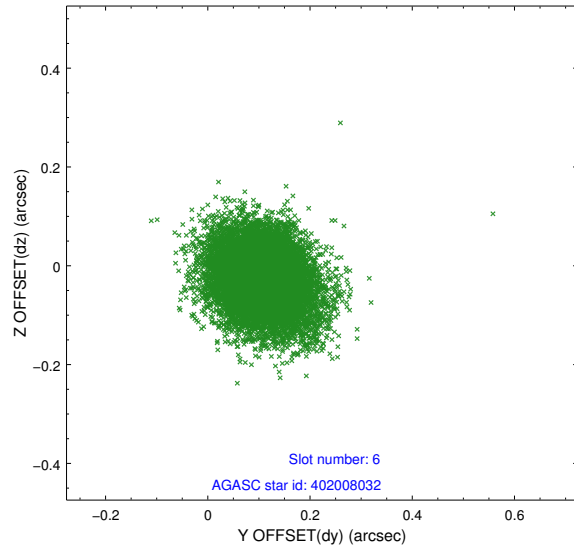




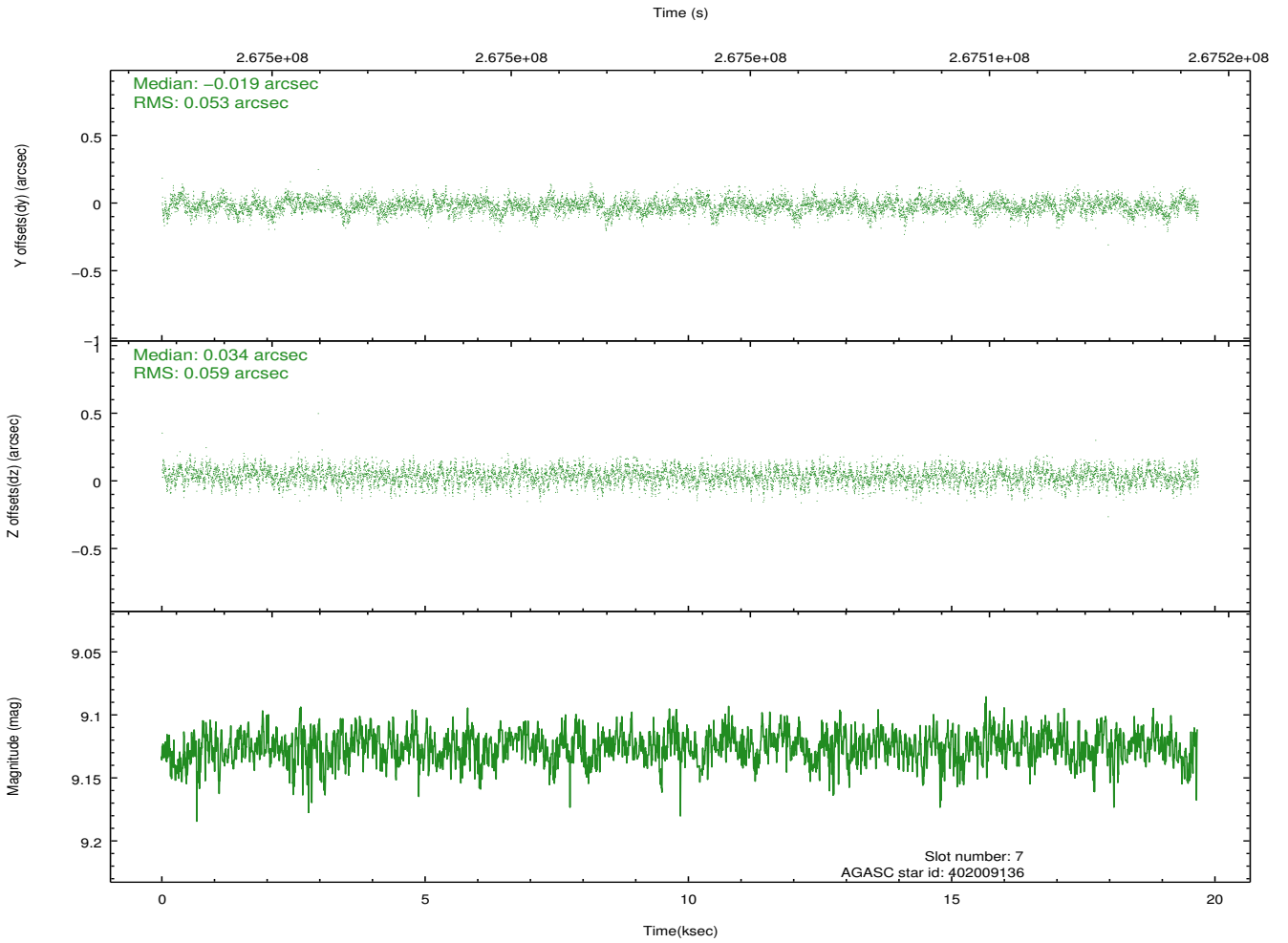
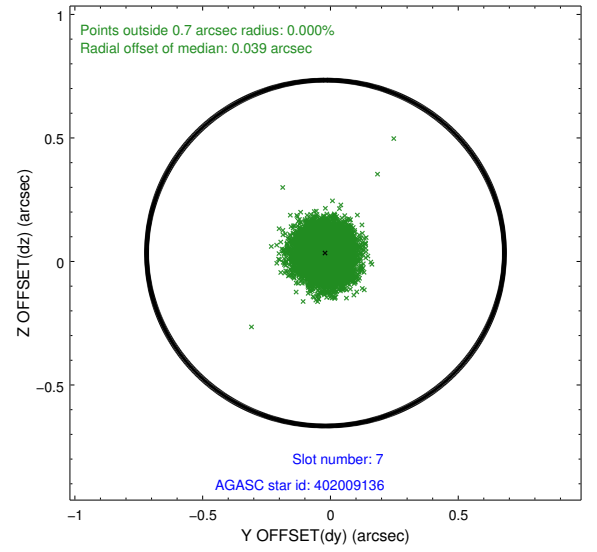
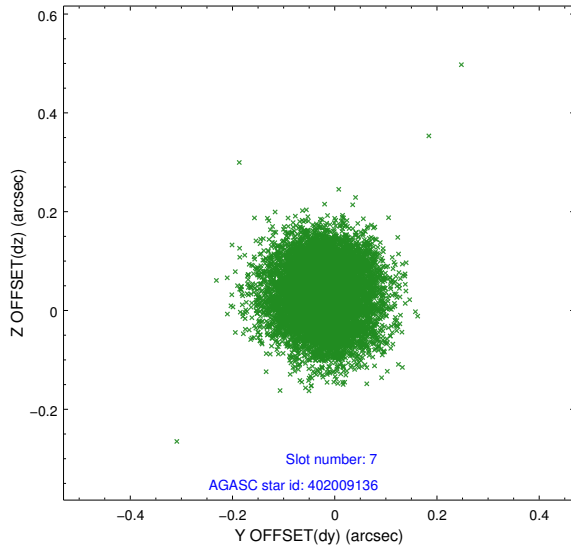
### 2.4.3 Slot 5



## 2.4.4 Slot 6

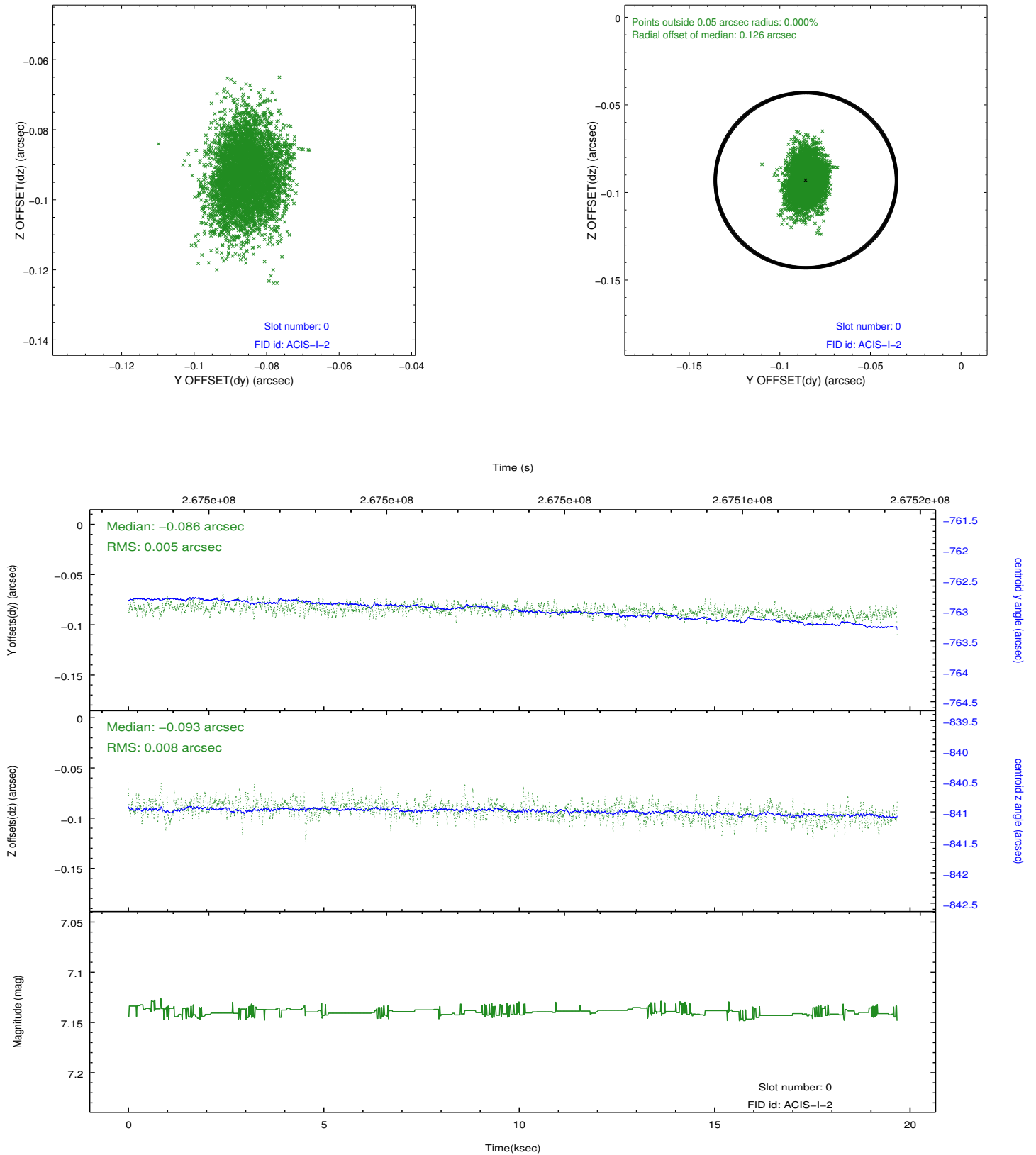


## 2.4.5 Slot 7

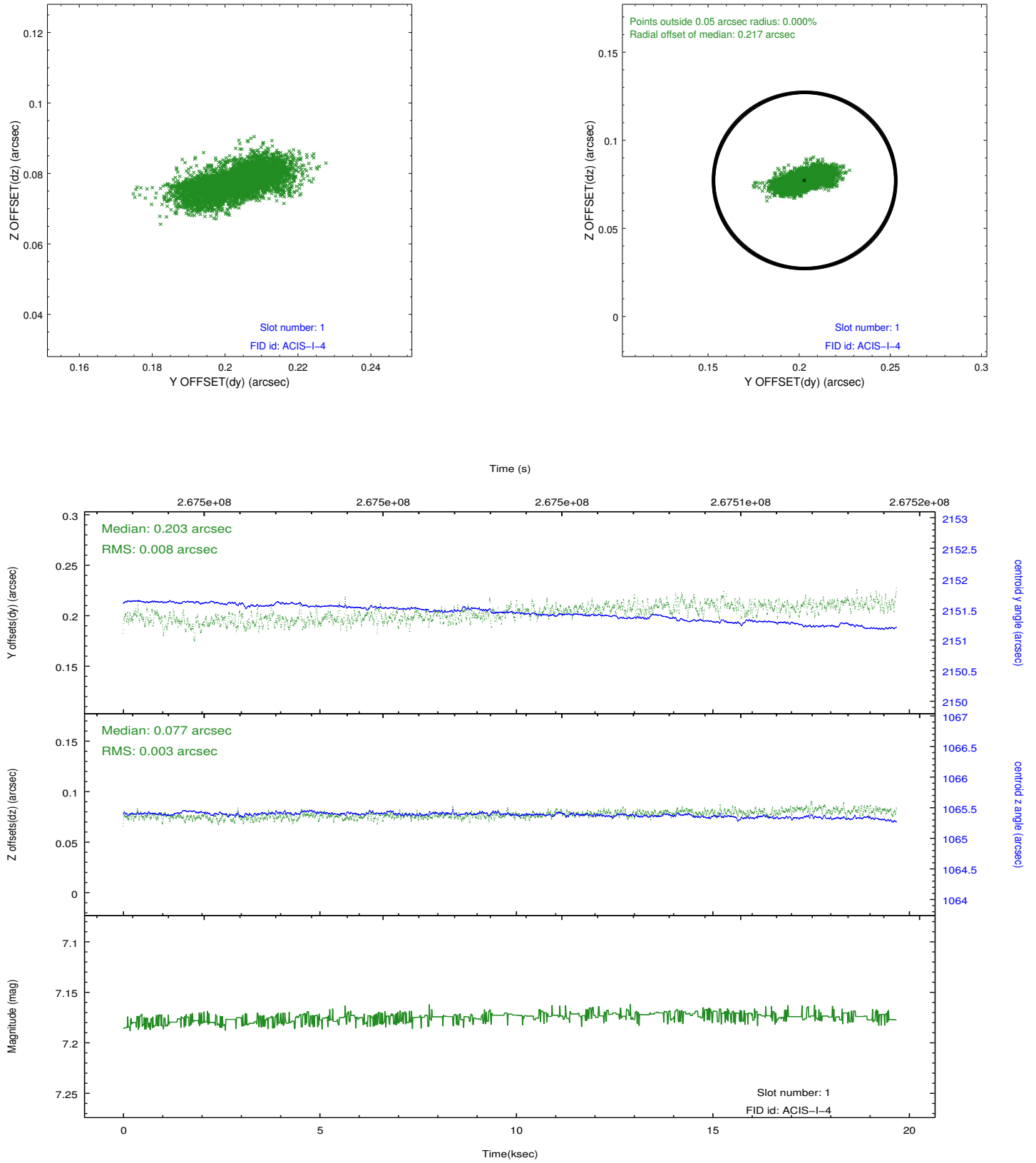


## 2.5 FID Slots

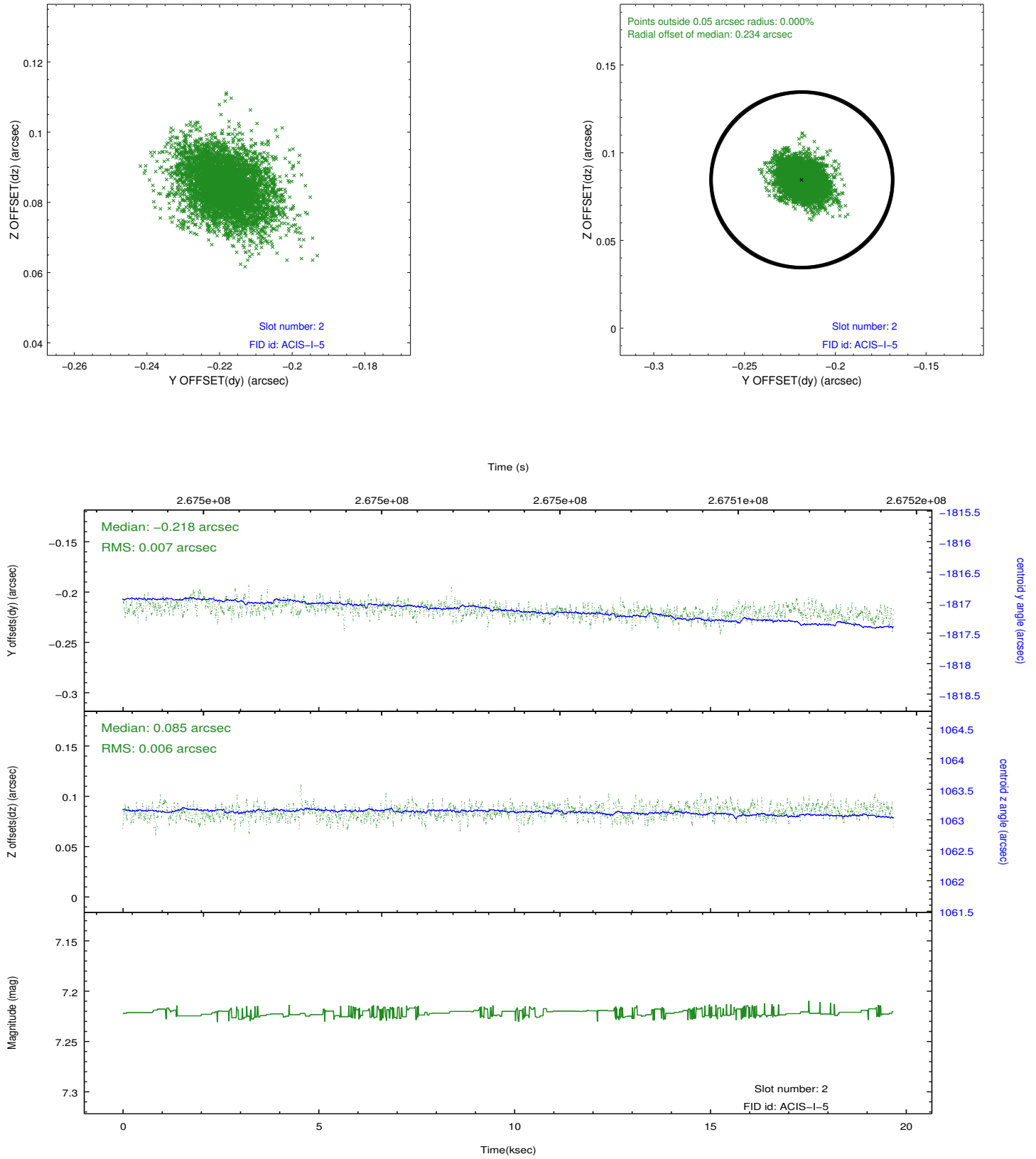
### 2.5.1 Slot 0



## 2.5.2 Slot 1



### 2.5.3 Slot 2



## A Summary

### A.1 Status

V&V Scientist	Jen Lauer
V&V Date (YYYY-MM-DD)	2012.04.05
V&V Edition	1
V&V Disposition and Status	OK
V&V Charge Time	19.6694589

### A.2 Comments