

V&V Reference Report

L2 ASCDS Version : 8.4.3

Observation 7243 - L2 Version 3
Chandra X-Ray Center

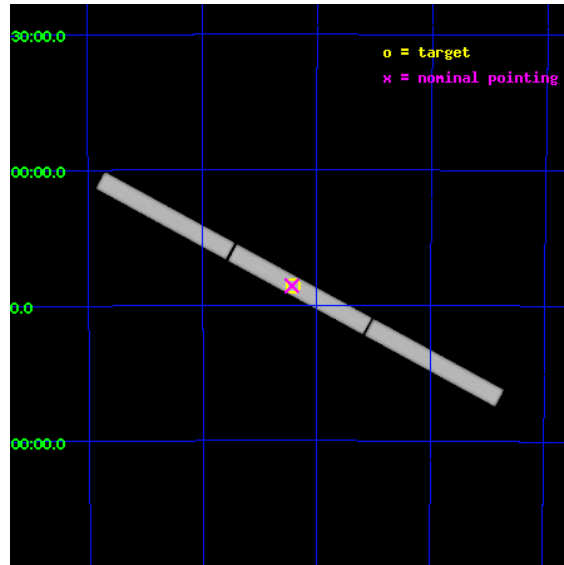
L2 Processing Date : Aug 10 2012

Contents

1	Front	2
2	OBI	3
2.1	OBI	3
2.1.1	Images	3
2.1.2	Parameters	4
2.1.3	Events	4
2.2	Compared Parameters	5
2.3	Aspect	6
2.4	Star Slots	9
2.4.1	Slot 3	9
2.4.2	Slot 4	10
2.4.3	Slot 5	11
2.4.4	Slot 6	12
2.4.5	Slot 7	13
2.5	FID Slots	14
2.5.1	Slot 0	14
2.5.2	Slot 1	15
2.5.3	Slot 2	16
3	Gratings	17
3.1	LETG Arm	17
A	Summary	19
A.1	Status	19
A.2	Comments	19

1 Front

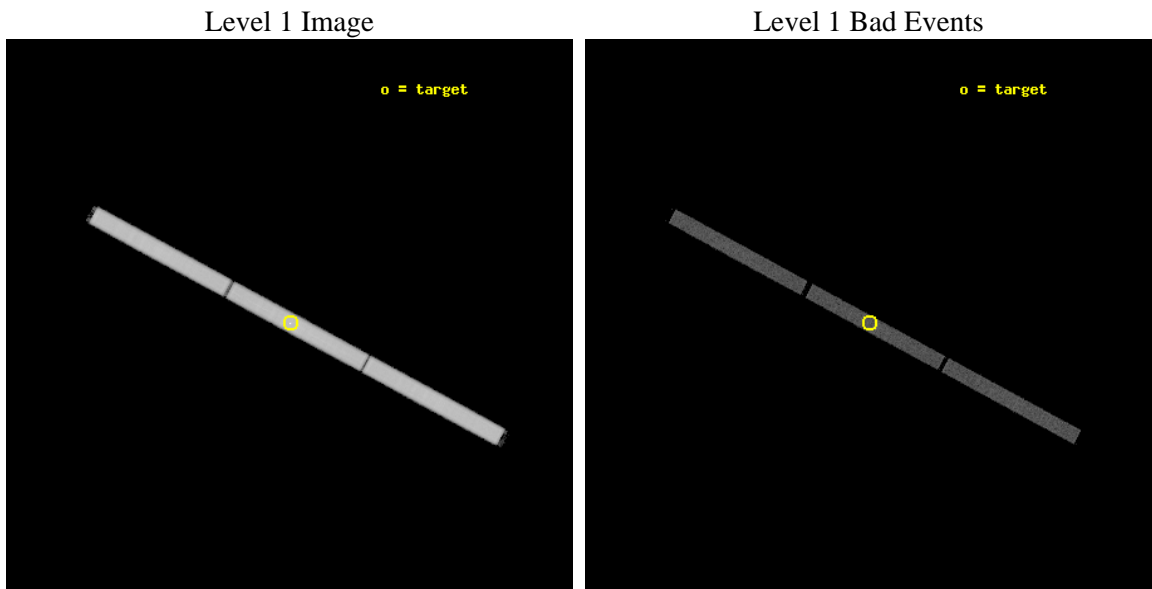
seq_num	500573	Sequence number
obs_id	7243	Observation id
title	Spectra of Neutron Stars with Strongly Magnetized Hydrogen Atmospheres	Proposal title
observer	Prof. Marten van Kerkwijk	Principal investigator
object	RX J0720.4-3125	Source name
ra_targ	110.104167	Observer's specified target RA [deg]
dec_targ	-31.430611	Observer's specified target Dec [deg]
ra_nom	110.10903899106	Nominal RA [deg]
dec_nom	-31.428583340825	Nominal Dec [deg]
roll_nom	28.269866186759	Nominal Roll [deg]
revision	3	Processing version of data
ontime	17184.382045001	[s]
livetime	17050.382955979	Ontime multiplied by DTCOR
l2events	1104298	Number of level 2 events



2 OBI

2.1 OBI

2.1.1 Images



2.1.2 Parameters

obi_num	0	Obi number	sched_exp_time	17000.000000	[s] Scheduled observation exposure time
ascdsver	8.4.5	Processing system revision	ontime	17184.382045001	[s]
caldsver	4.5.1.1	 	l1events	1578330	Number of level 1 events
date	2012-08-10T18:09:12	Date and time of file creation			
revision	3	Processing version of data			

2.1.3 Events

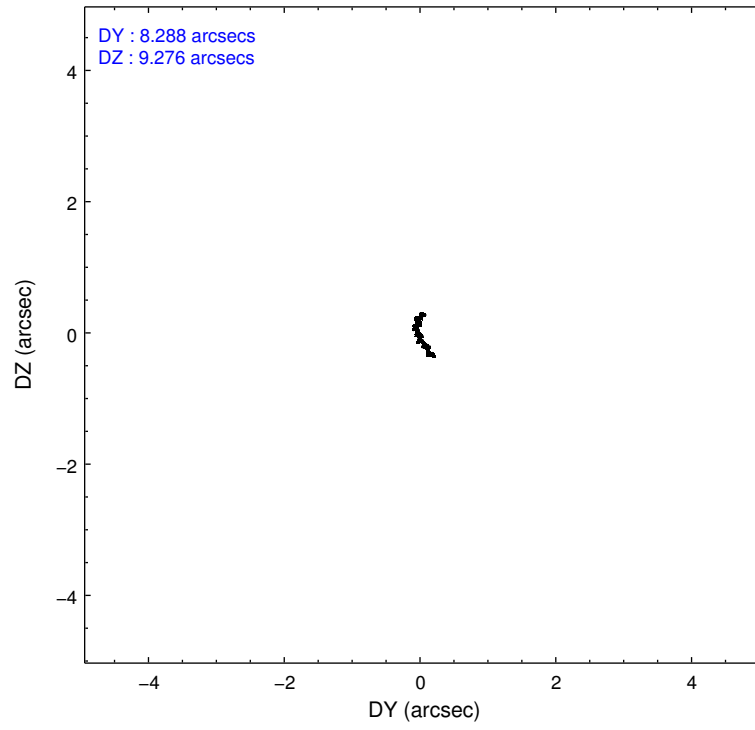
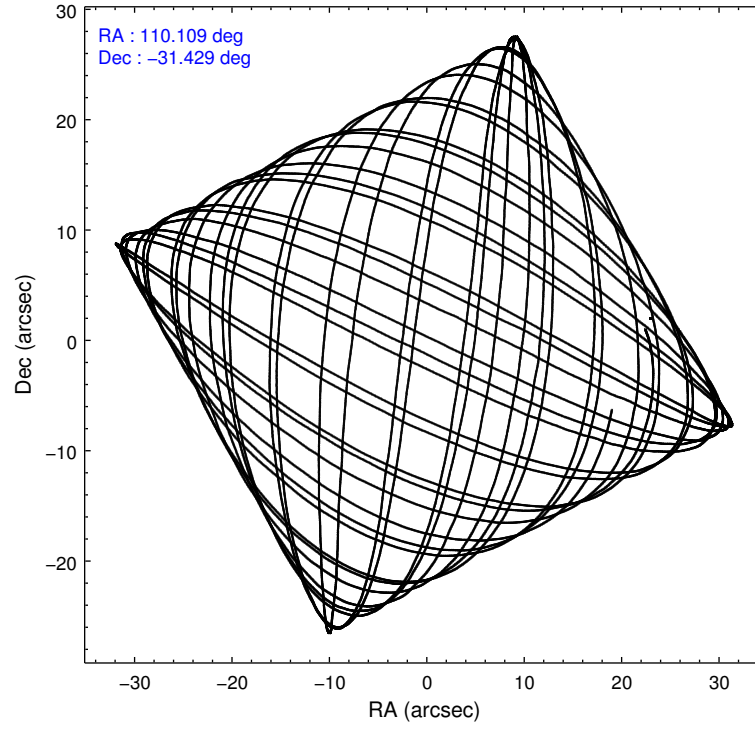
Level 1 Events

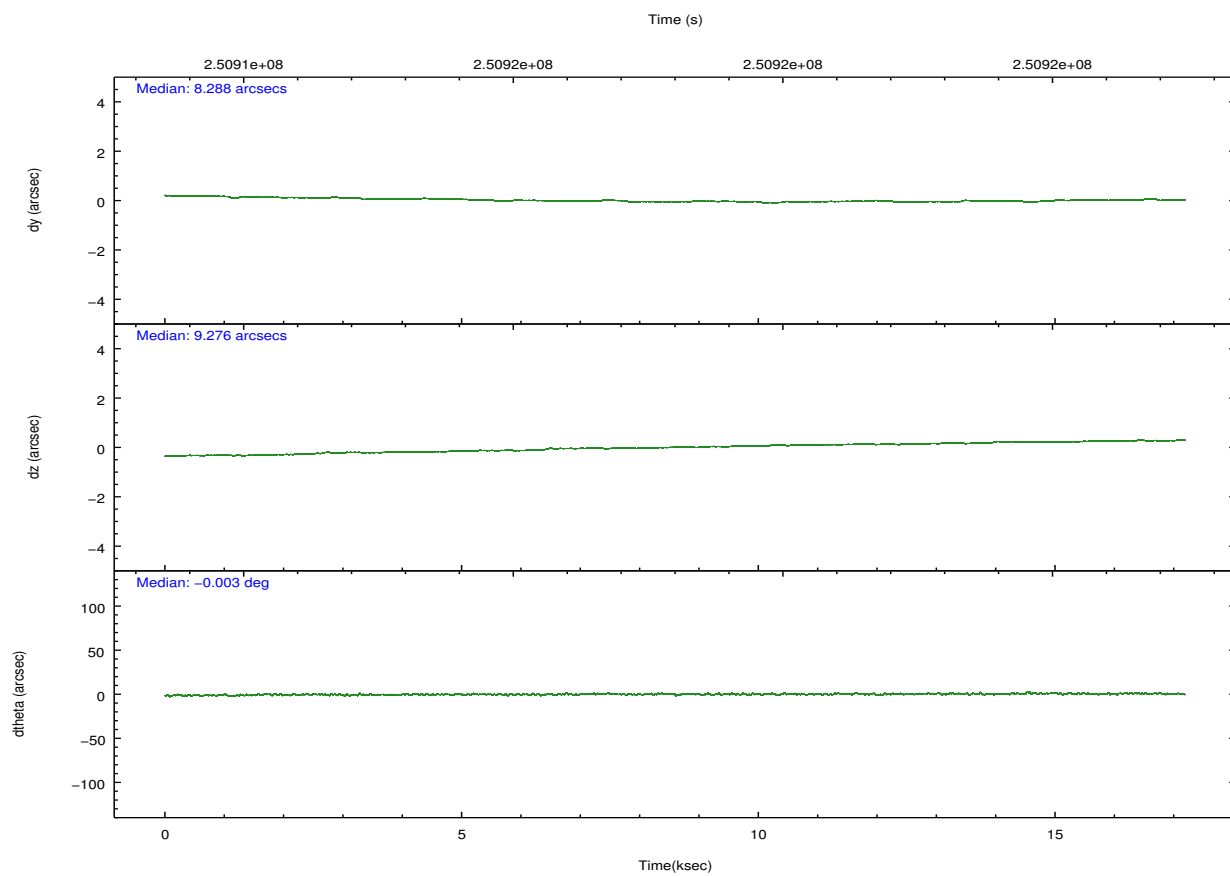
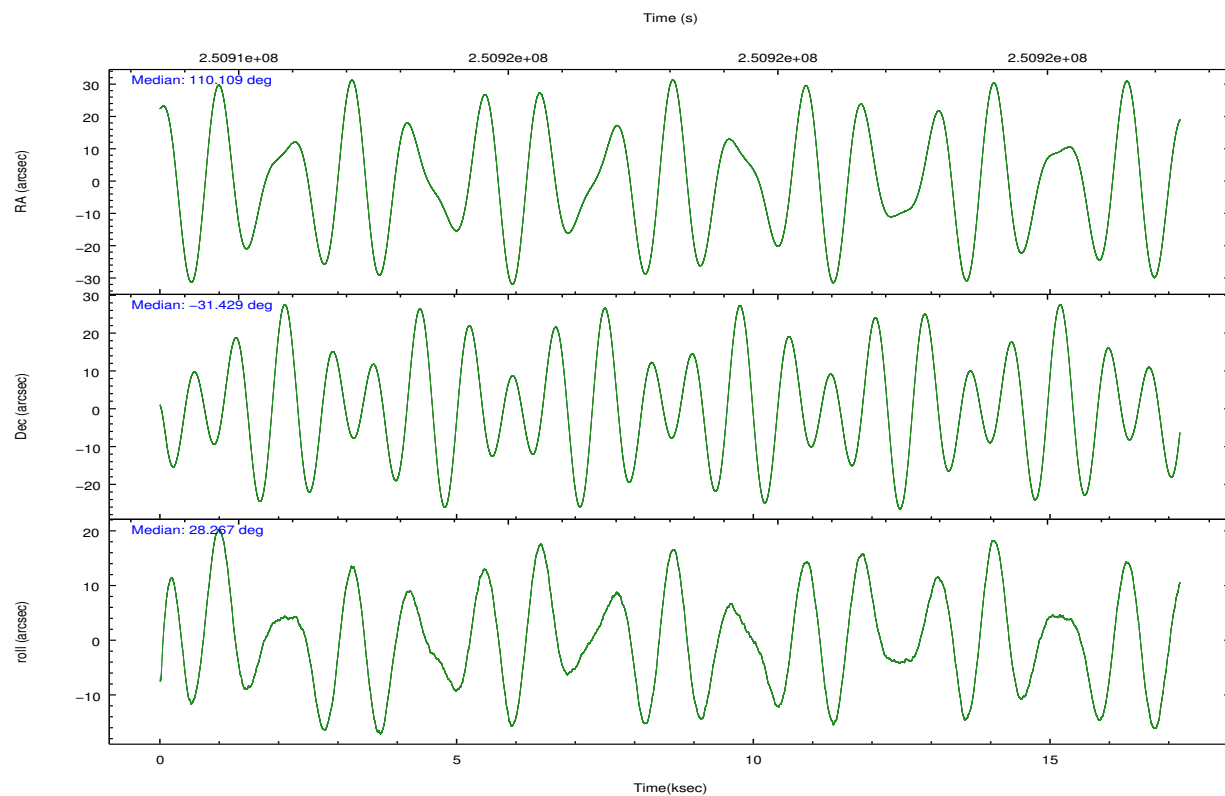
	segment 1	segment 2	segment 3
level 1 events	527170	522357	528803
rejected events	32766	32305	33089
rejected %	6%	6%	6%

2.2 Compared Parameters

Parameter	Planned	Actual	Parameter	Planned	Actual
Instrument	HRC	HRC	Obspar format version number	7	7
Detector	HRC-S	HRC-S	Obspar file type	PREDICTED	ACTUAL
Grating	LETG	LETG	Obspar update status	NONE	UPDATED
Data mode	OBSERVING	OBSERVING			
Observation mode	POINTING	POINTING			
[deg] Pointing RA	110.092878	110.1090389910613			
[deg] Pointing Dec	-31.453548	-31.42858334082545			
[deg] Pointing Roll	28.194106	28.26986618675899			
[mm] SIM focus pos	-1.429586	-1.428180813131781			
[mm] SIM defocus	0.1037507710433287	0.1051558262725154			
[mm] SIM translation stage pos	250.455976	250.466033080201			
[mm] SIM translation stage offset	0	-0.01005468664627074			
[s] Observation start time (MET)	250909598.184000	250908797.95661			
Observation start date	2005-12-14T01:05:34	2005-12-14T00:53:17			
[s] Observation end time (MET)	250926598.184000	250927405.80747			
Observation end date	2005-12-14T05:48:54	2005-12-14T06:03:25			

2.3 Aspect



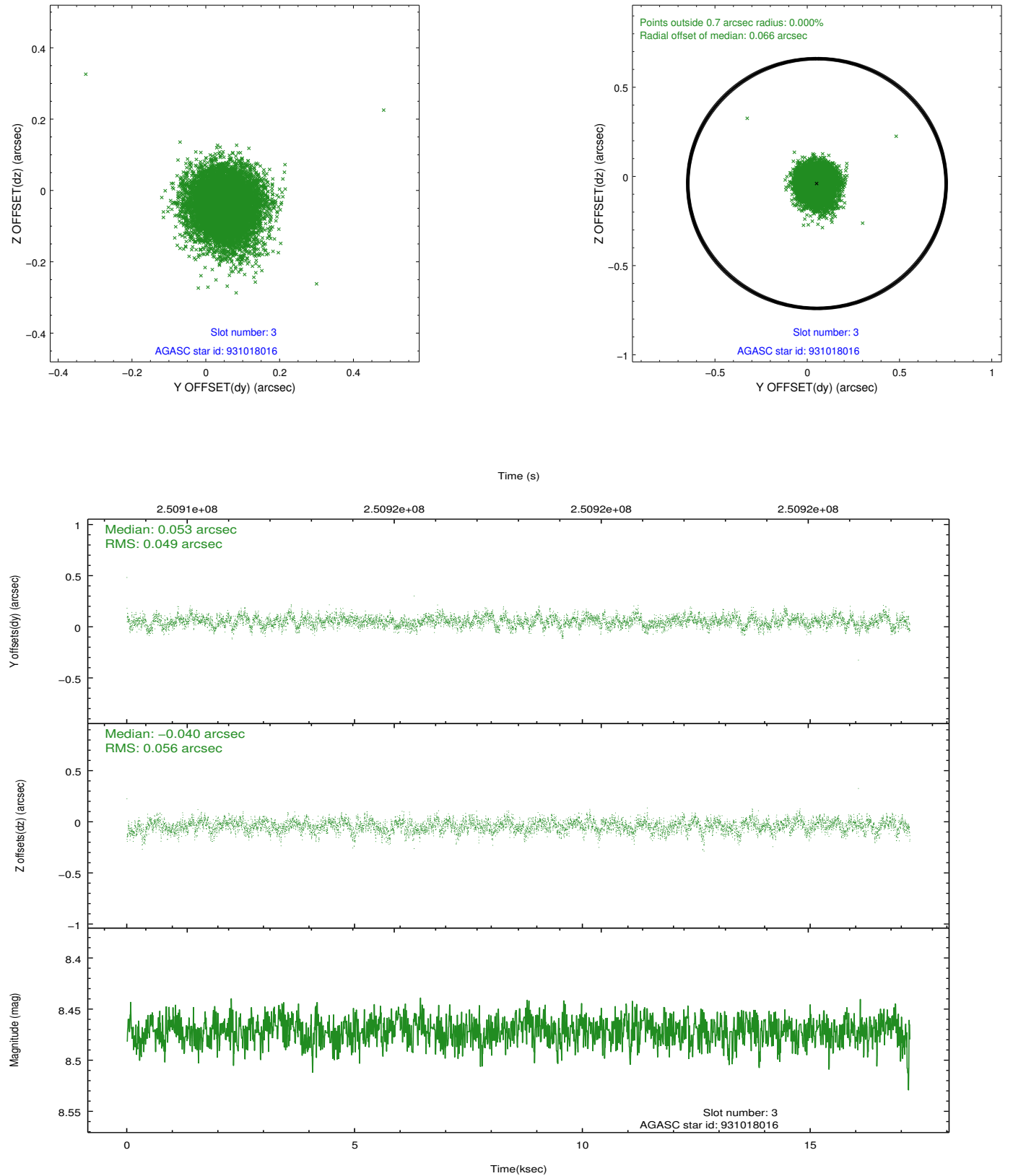


Slot Statistics

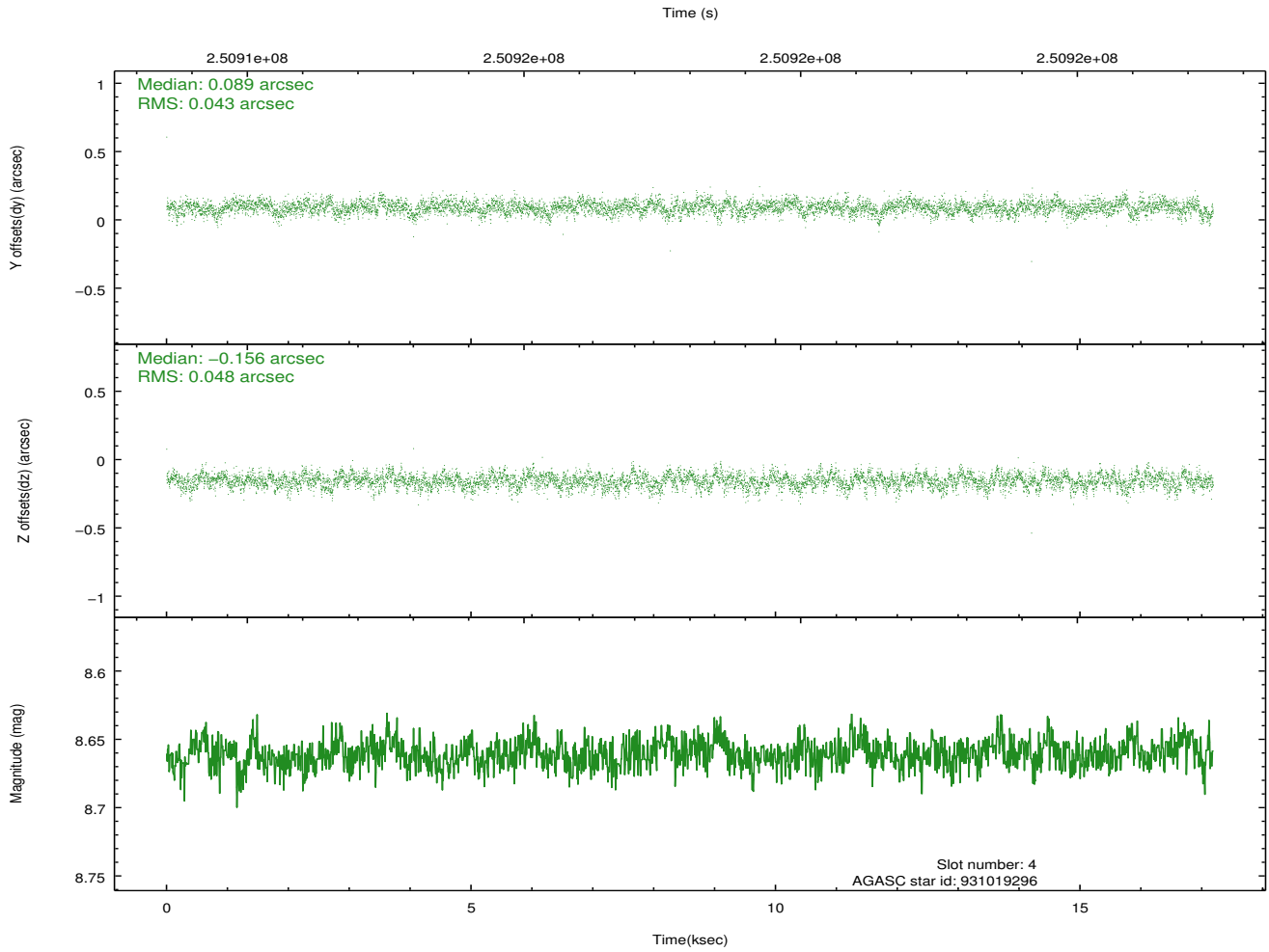
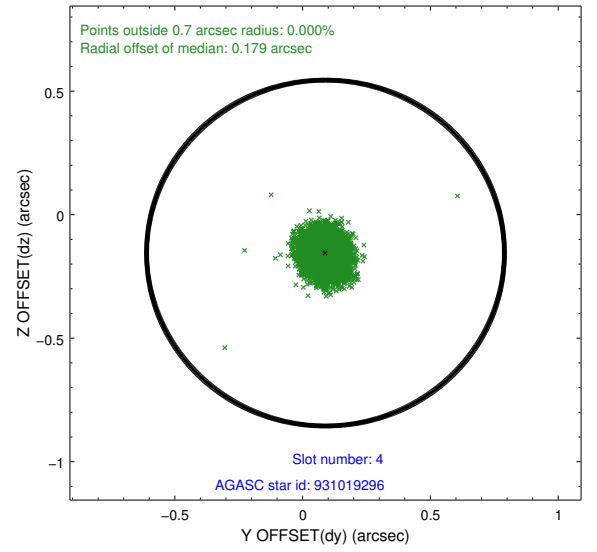
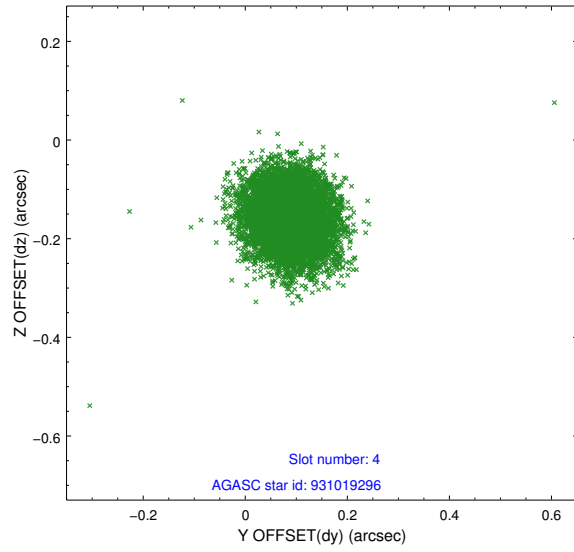
slot	status	id	mag	n_pts	med_dy	med_dz	dr1	dr2	ra	dec	mean_y	mean_z
0	FID	HRC-S-1	7.04	4190	0.157	-0.188	0.011	0.018	0.000000	0.000000	-1162.47	-457.96
1	FID	HRC-S-2	7.03	4192	0.142	-0.117	0.006	0.011	0.000000	0.000000	1236.92	-450.64
2	FID	HRC-S-3	7.05	4192	0.091	0.004	0.012	0.020	0.000000	0.000000	-1164.96	571.65
3	GUIDE	931018016	8.47	8363	0.053	-0.040	0.079	0.128	109.684535	-31.226562	-722.51	1312.32
4	GUIDE	931019296	8.66	8379	0.089	-0.156	0.067	0.110	109.471771	-31.694370	-2088.76	130.06
5	GUIDE	931022960	8.95	8383	0.099	0.181	0.076	0.123	109.733092	-31.864448	-1668.87	-785.12
6	GUIDE	931146200	8.97	8378	-0.146	0.089	0.075	0.123	110.586199	-31.643611	1007.90	-1319.93
7	GUIDE	931160352	8.63	8382	-0.093	-0.072	0.073	0.117	110.268138	-30.864891	1478.80	1611.90

2.4 Star Slots

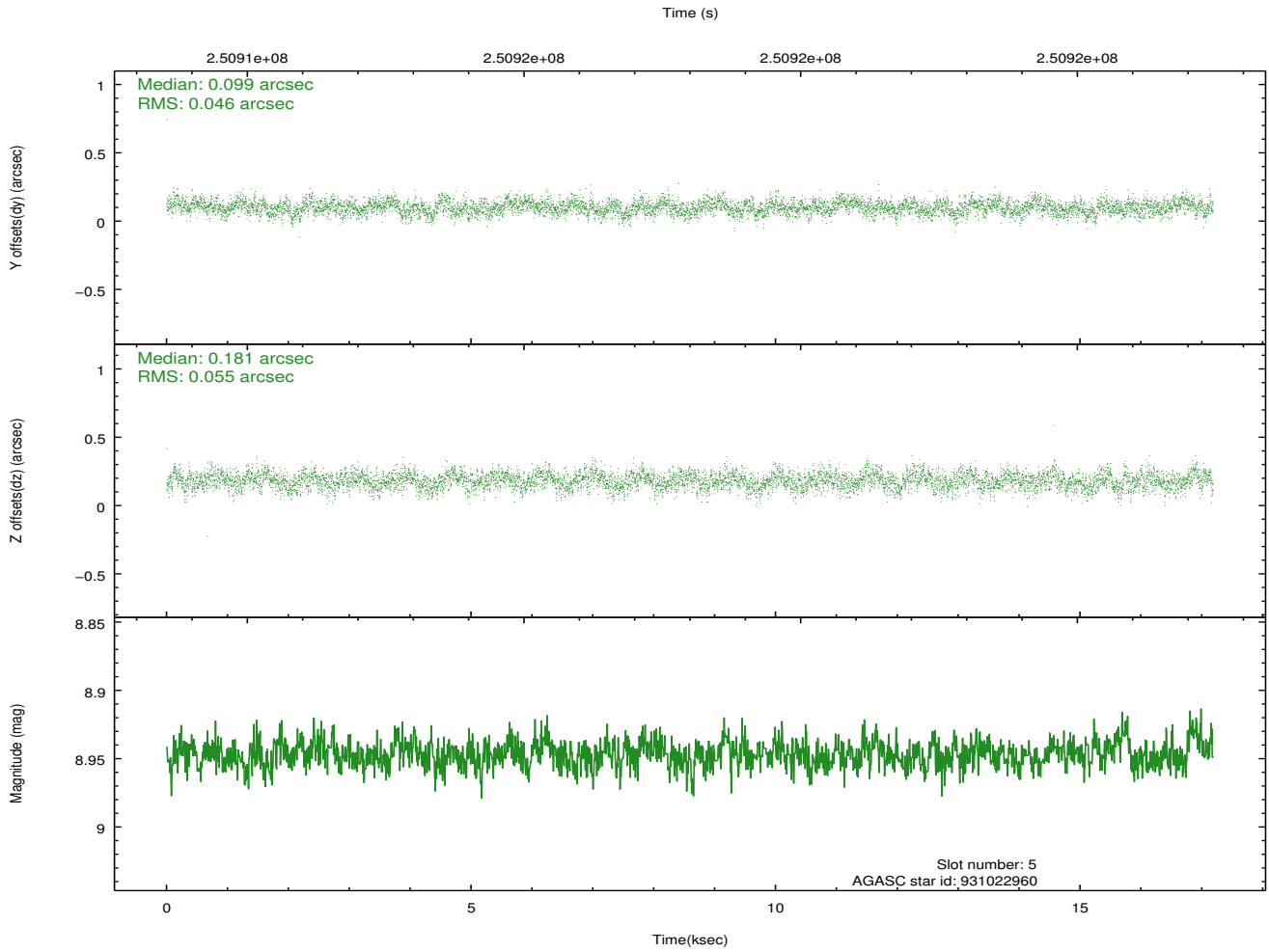
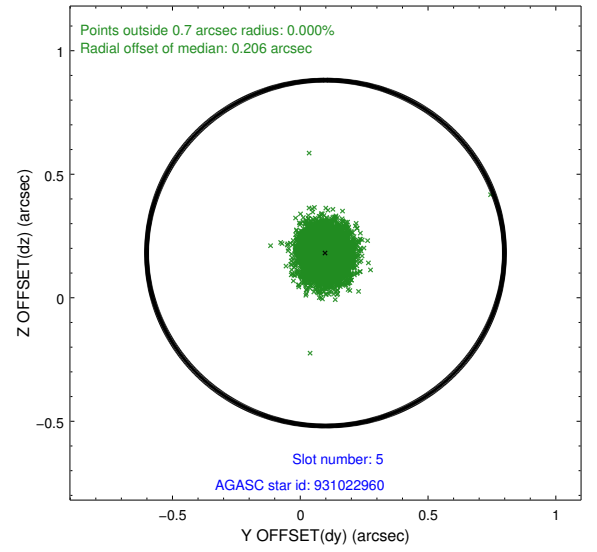
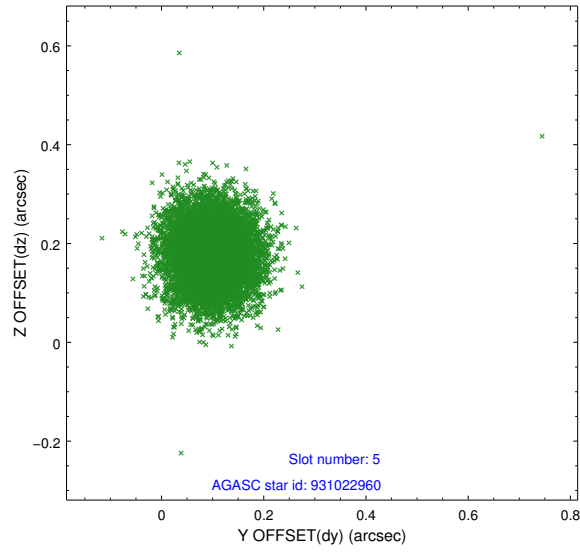
2.4.1 Slot 3



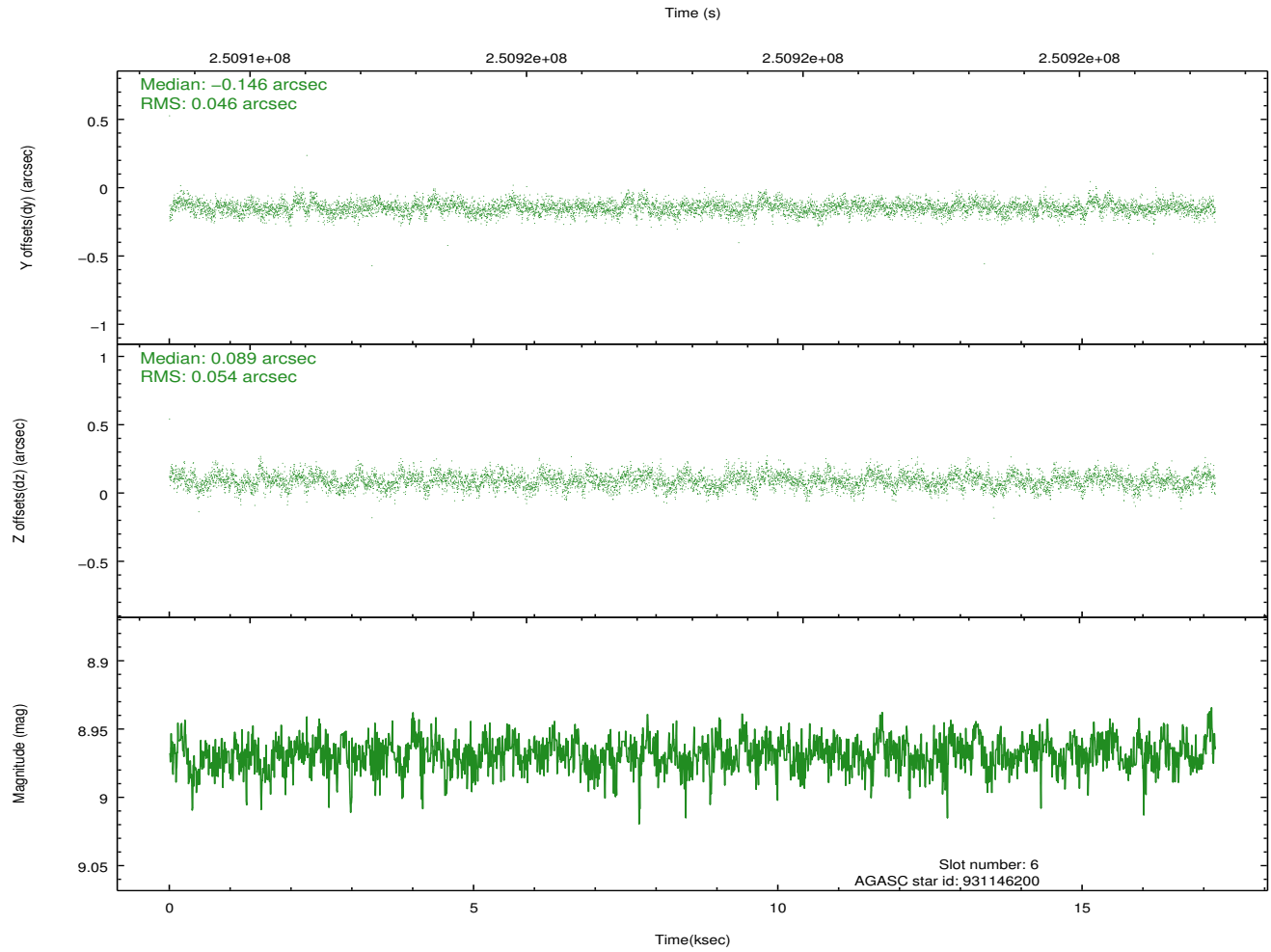
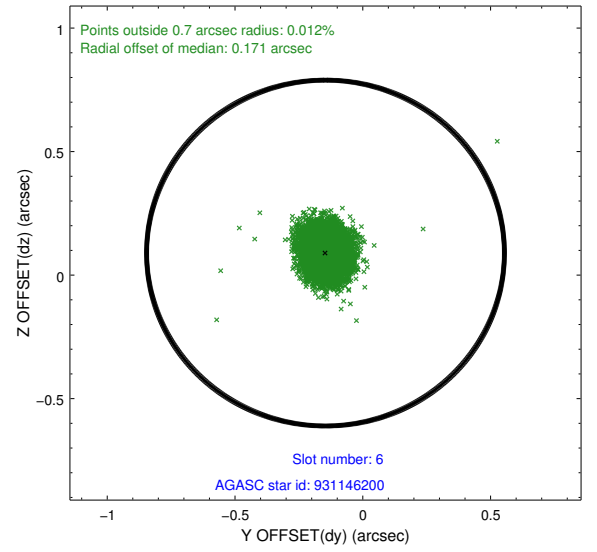
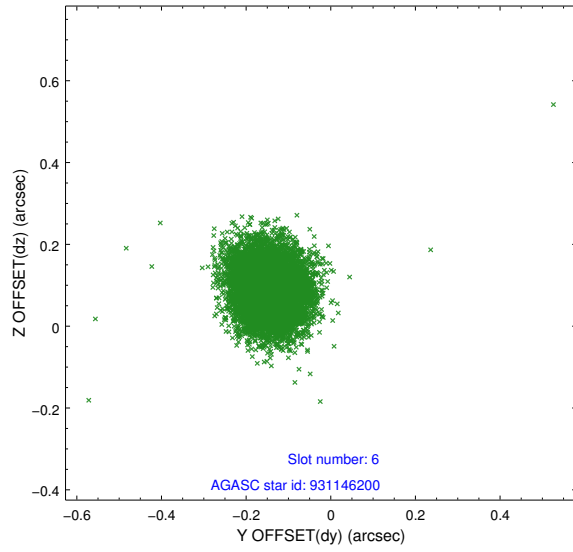
2.4.2 Slot 4



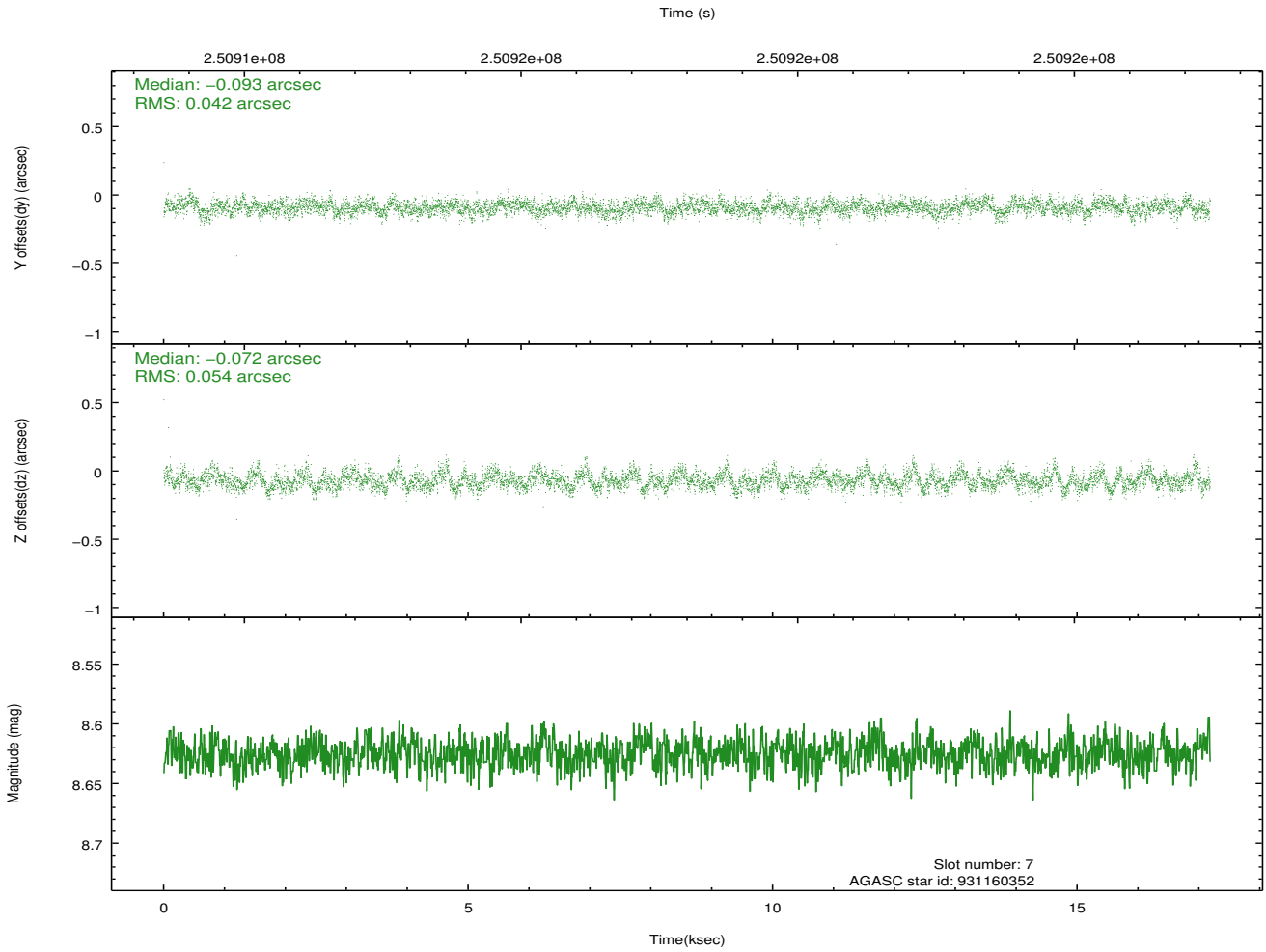
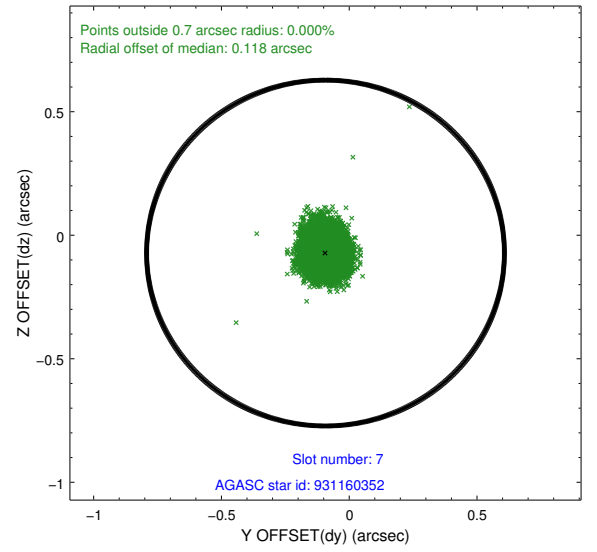
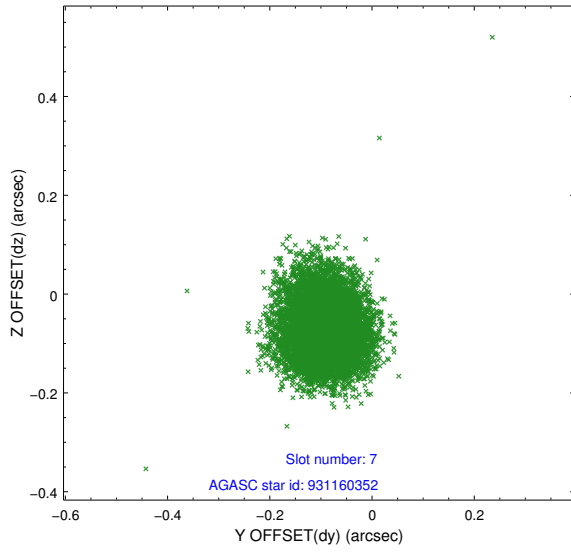
2.4.3 Slot 5



2.4.4 Slot 6

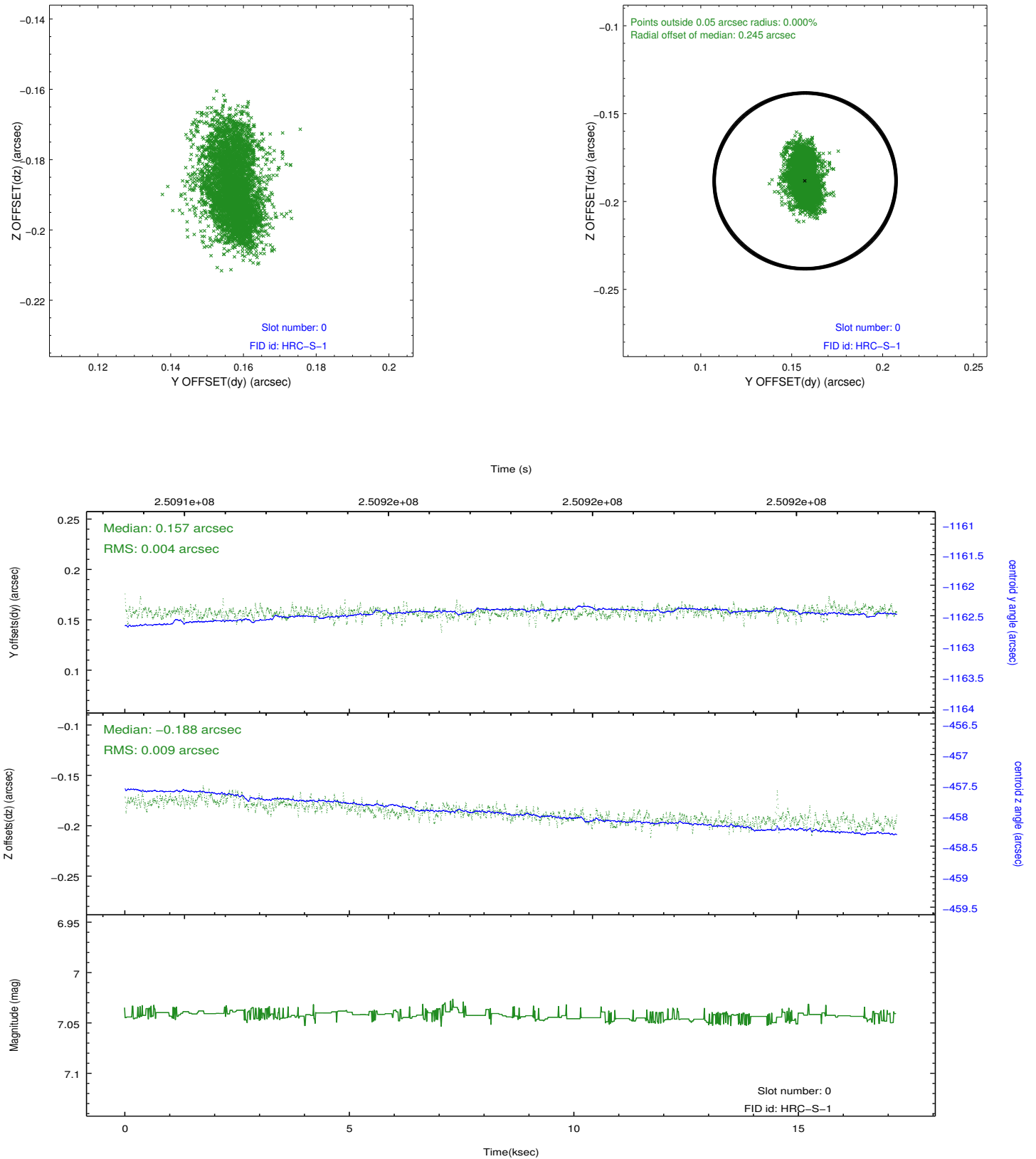


2.4.5 Slot 7

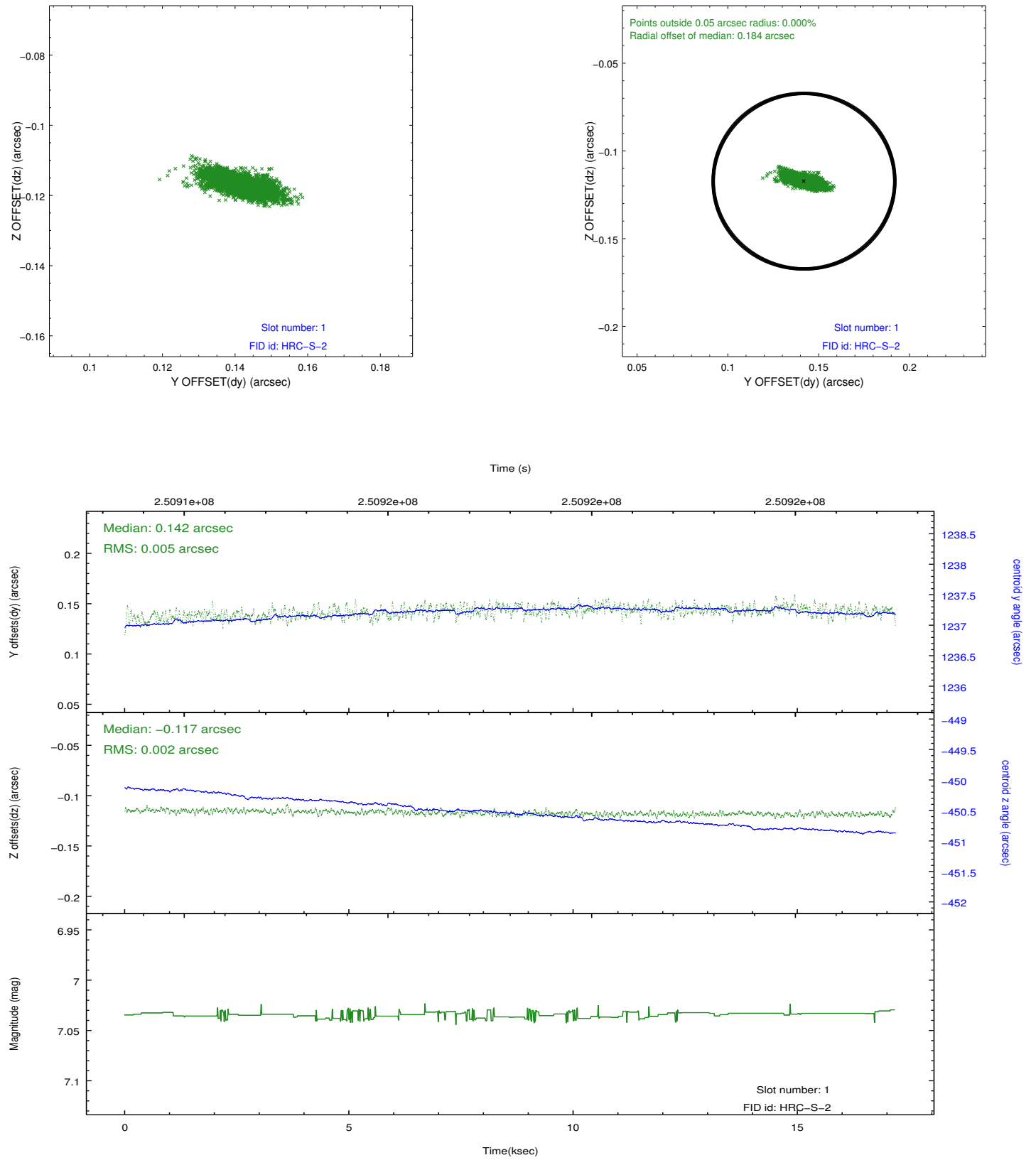


2.5 FID Slots

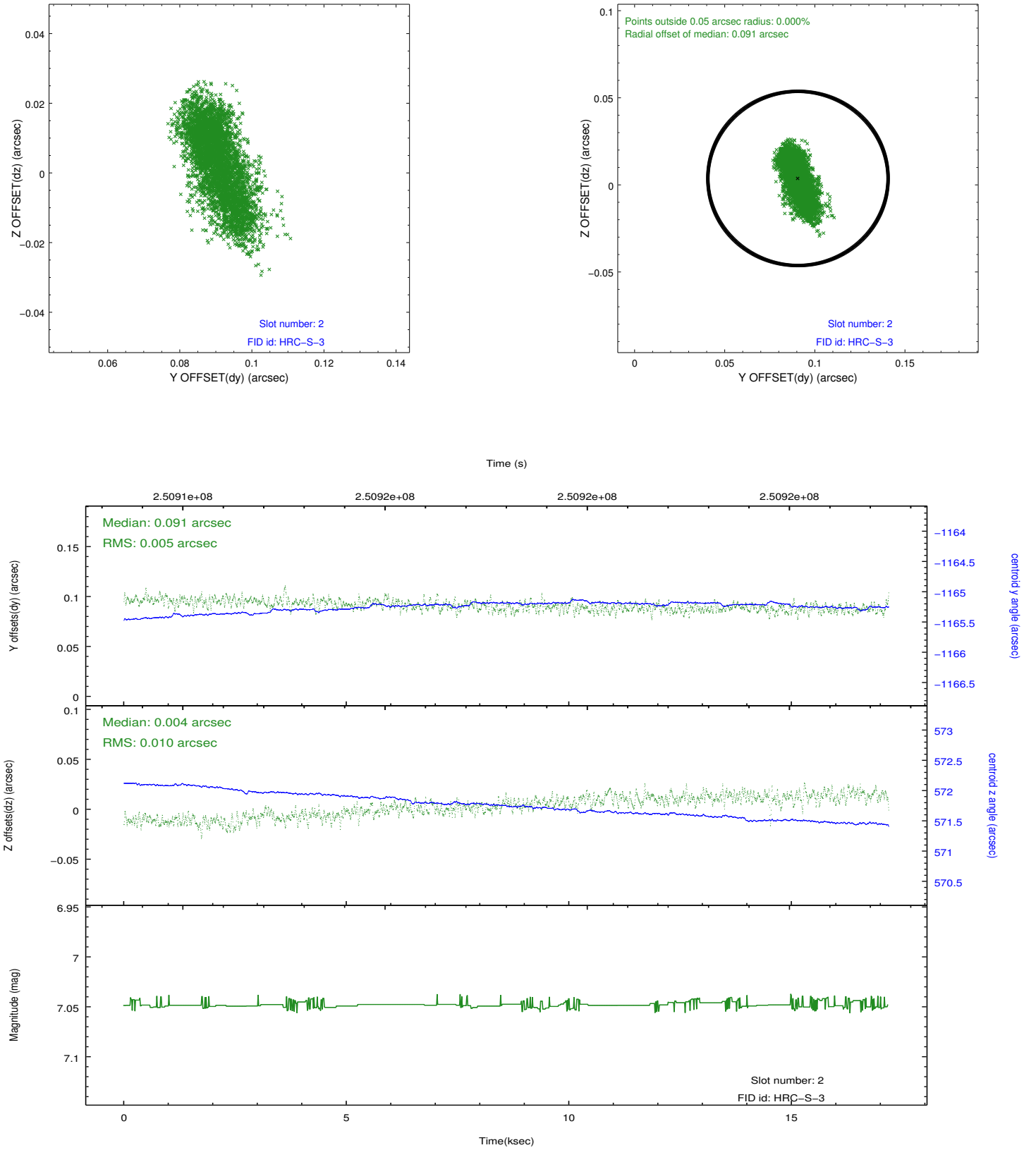
2.5.1 Slot 0



2.5.2 Slot 1

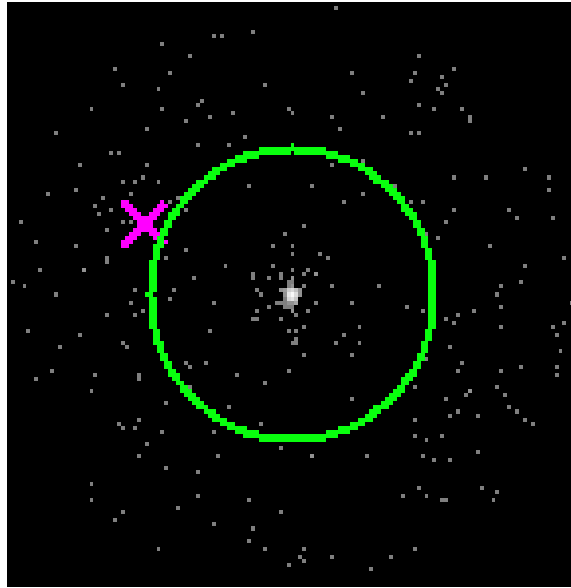


2.5.3 Slot 2

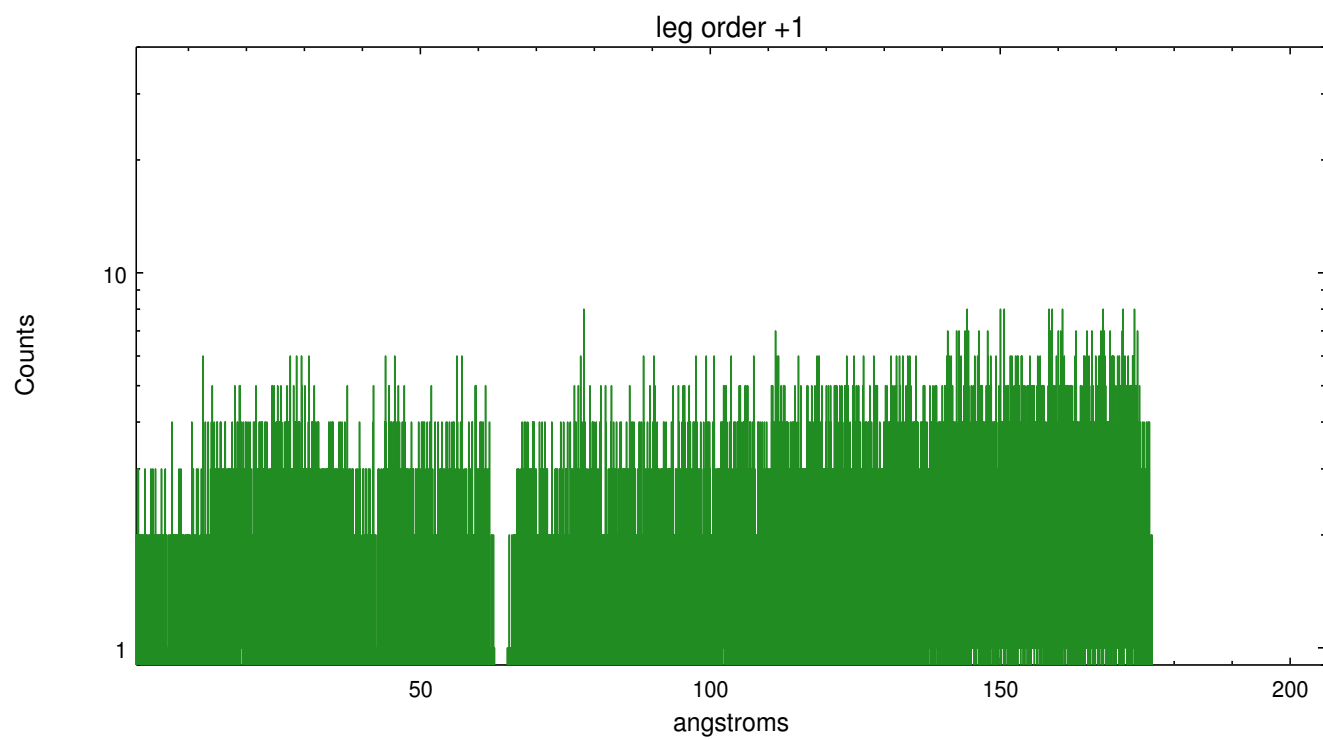
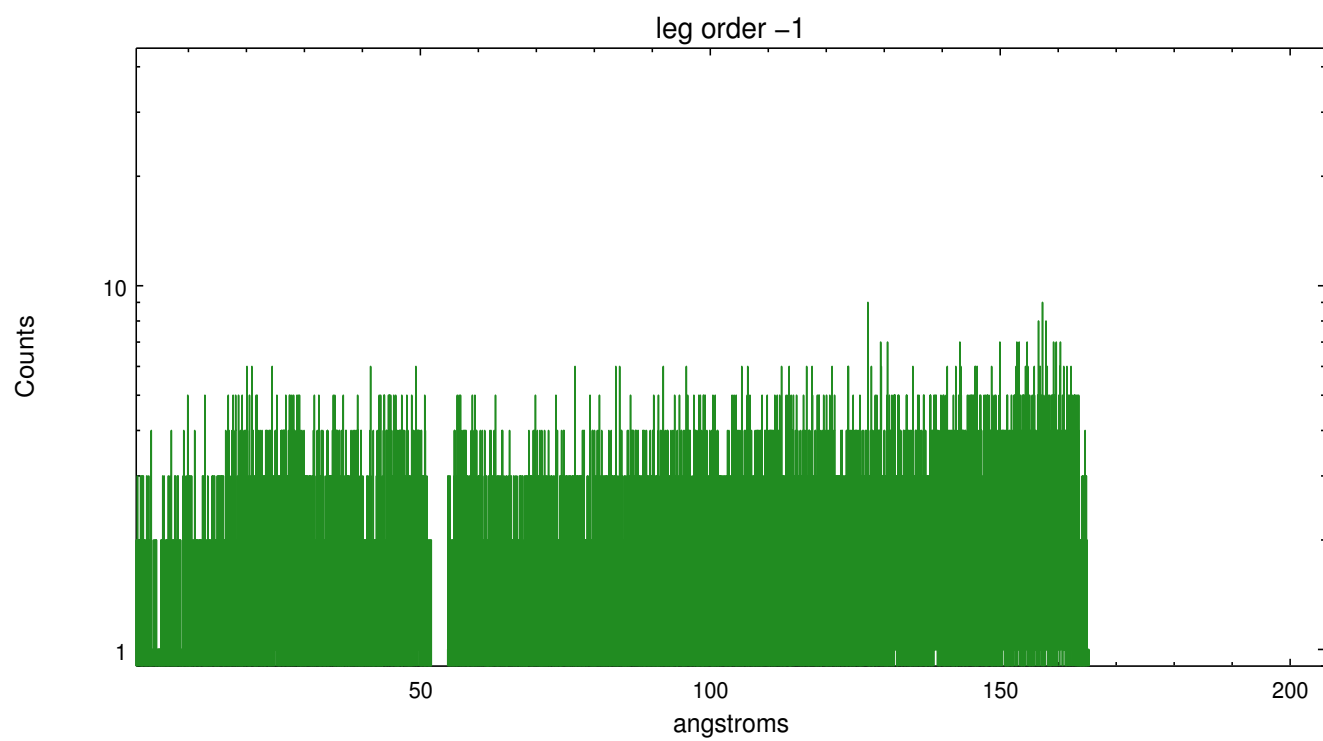


3 Gratings

3.1 LETG Arm



LETG Zero Order



A Summary

A.1 Status

V&V Scientist	Joy Nichols
V&V Date (YYYY-MM-DD)	2012.08.14
V&V Edition	1
V&V Disposition and Status	OK
V&V Charge Time	17.18438

A.2 Comments