

V&V Reference Report

L2 ASCDS Version : 8.4.3.1

Observation 6983 - L2 Version 2
Chandra X-Ray Center

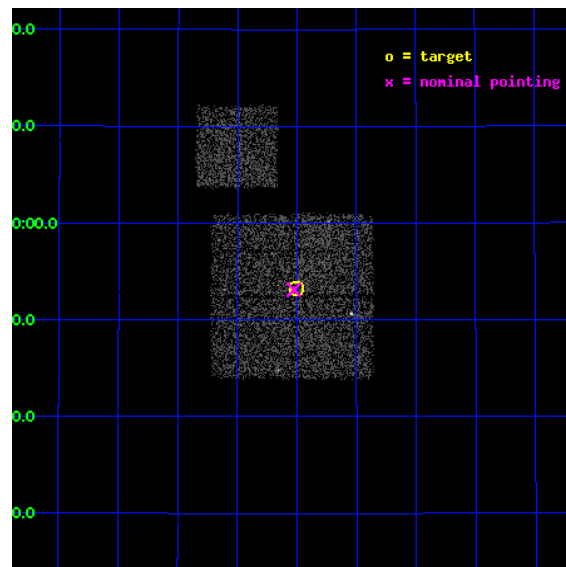
L2 Processing Date : Apr 12 2012

Contents

1	Front	2
2	OBI	3
2.1	OBI	3
2.1.1	Images	3
2.1.2	Bias	3
2.1.3	Parameters	4
2.1.4	Events	4
2.2	Compared Parameters	5
2.3	Aspect	6
2.4	Star Slots	9
2.4.1	Slot 3	9
2.4.2	Slot 4	10
2.4.3	Slot 5	11
2.4.4	Slot 6	12
2.4.5	Slot 7	13
2.5	FID Slots	14
2.5.1	Slot 0	14
2.5.2	Slot 1	15
2.5.3	Slot 2	16
A	Summary	17
A.1	Status	17
A.2	Comments	17

1 Front

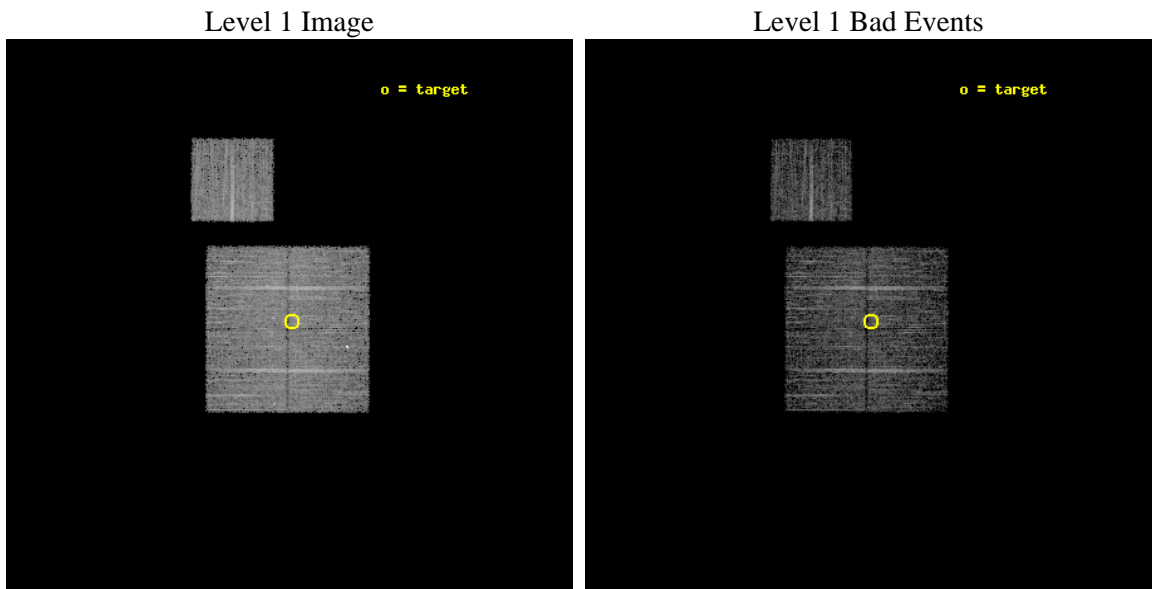
seq_num	900399	Sequence number
obs_id	6983	Observation id
title	Chandra Large Scale Survey of the NOAO Bootes Deep Field (A)	Propo
observer	Dr. Stephen Murray	Principal investigator
object	Bootes2 5	Source name
dtcycle	0	
cycle	P	events from which exps? Prim/Second/Both
ra_targ	217.376233	Observer's specified target RA [deg]
dec_targ	33.886897	Observer's specified target Dec [deg]
ra_nom	217.38142091988	Nominal RA [deg]
dec_nom	33.885167040264	Nominal Dec [deg]
roll_nom	0.20572356588787	Nominal Roll [deg]
revision	2	Processing version of data
ontime	4776.8421859741	Sum of GTIs [s]
livetime	4714.4292261543	Livetime [s]
ontime0	4776.7190659642	Sum of GTIs [s]
ontime1	4776.7601059675	Sum of GTIs [s]
ontime2	4776.8011459708	Sum of GTIs [s]
ontime3	4776.8421859741	Sum of GTIs [s]
ontime6	4776.6780259609	Sum of GTIs [s]
l2events	15167	Number of level 2 events



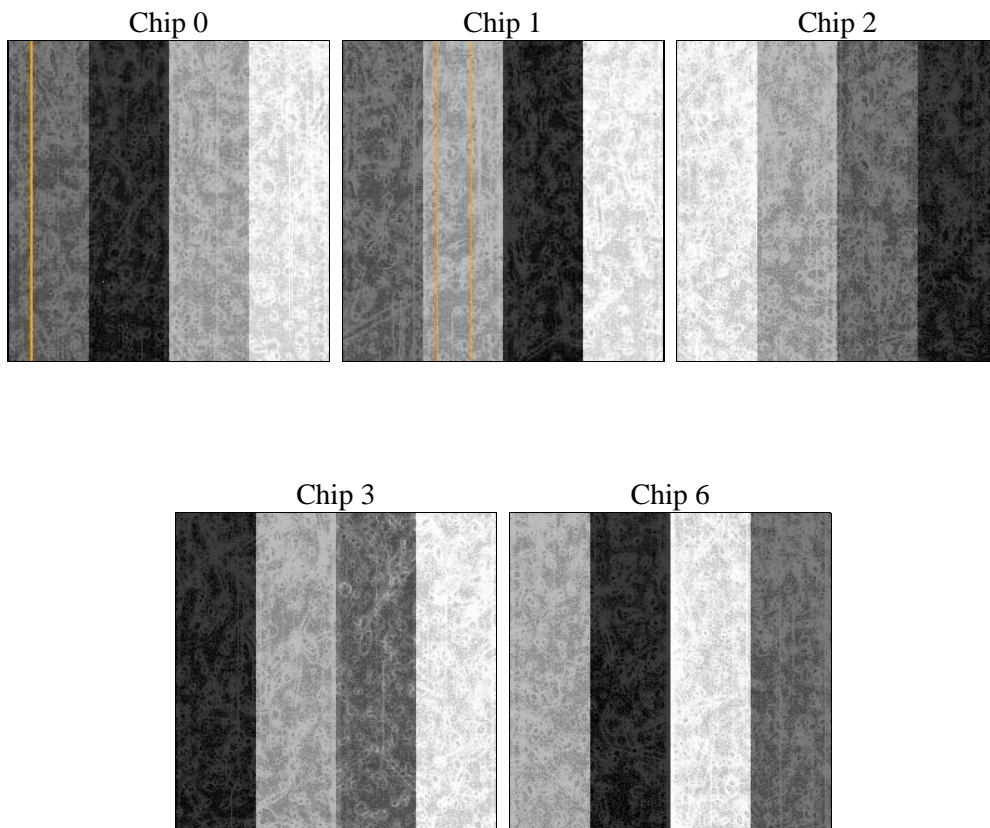
2 OBI

2.1 OBI

2.1.1 Images



2.1.2 Bias



2.1.3 Parameters

obi_num	0	Obi number	sched_exp_time	5000.000000	[s] Scheduled observation exposure time
ascdsver	8.4.3.1	Processing system revision	ontime	4776.8421859741	Sum of GTIs [s]
caldsver	4.4.9	 	ontime0	4776.7190659642	Sum of GTIs [s]
date	2012-04-12T22:55:33	Date and time of file creation	ontime1	4776.7601059675	Sum of GTIs [s]
revision	2	Processing version of data	ontime2	4776.8011459708	Sum of GTIs [s]
			ontime3	4776.8421859741	Sum of GTIs [s]
			ontime6	4776.6780259609	Sum of GTIs [s]
			l1events	176819	Number of level 1 events

2.1.4 Events

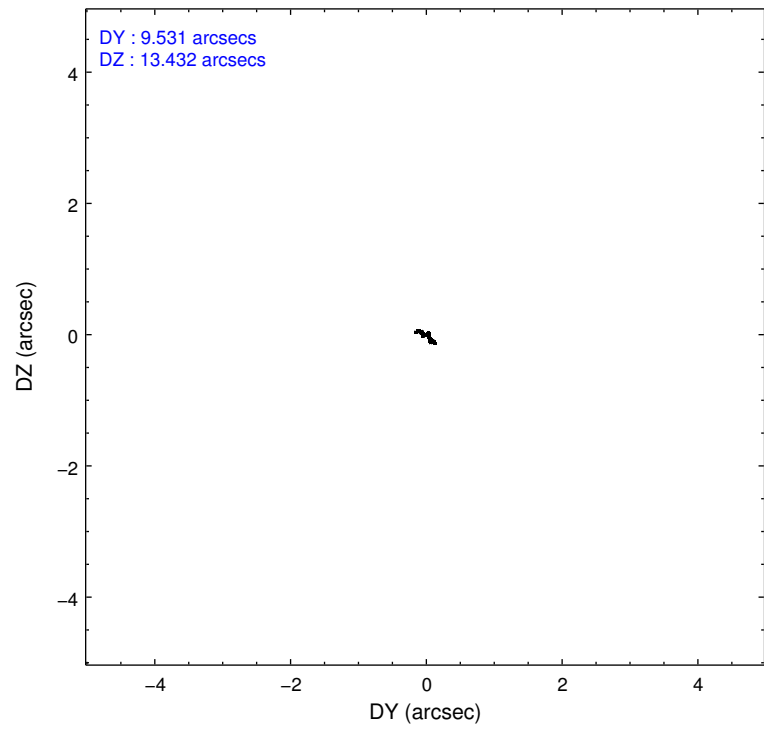
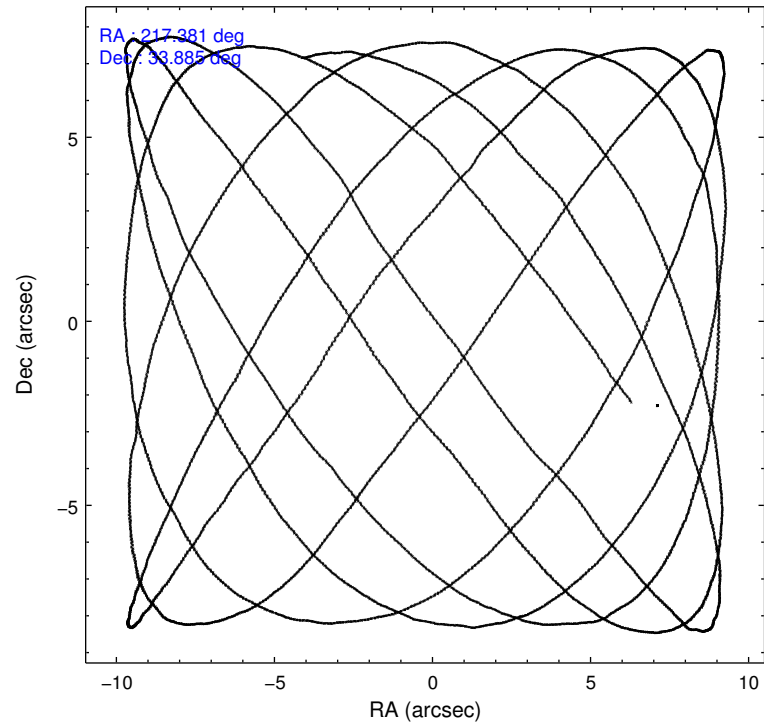
	ccd 0	ccd 1	ccd 2	ccd 3	ccd 6
level 1 events	34112	33786	38898	35957	34066
rejected events	30763	28944	35490	32511	30645
rejected %	90%	85%	91%	90%	89%

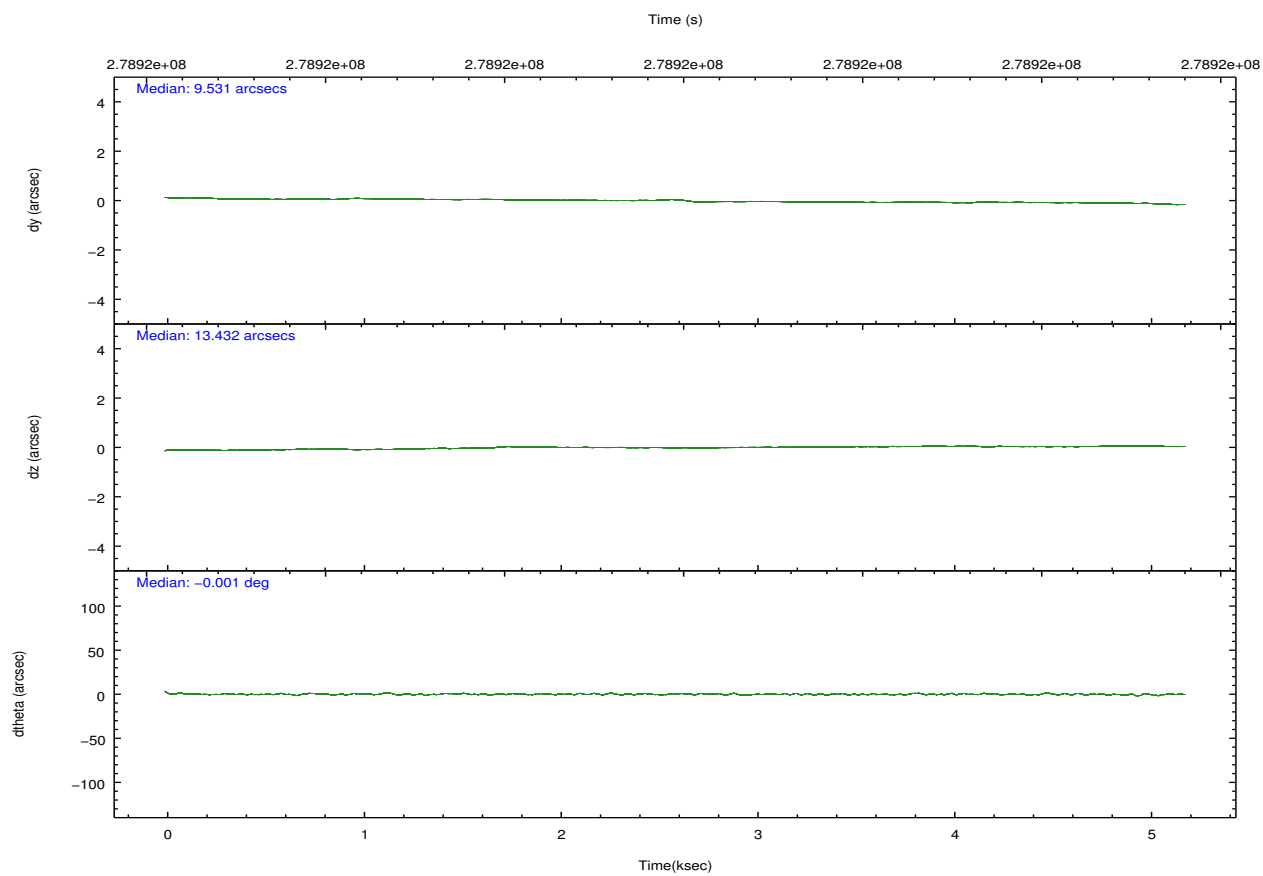
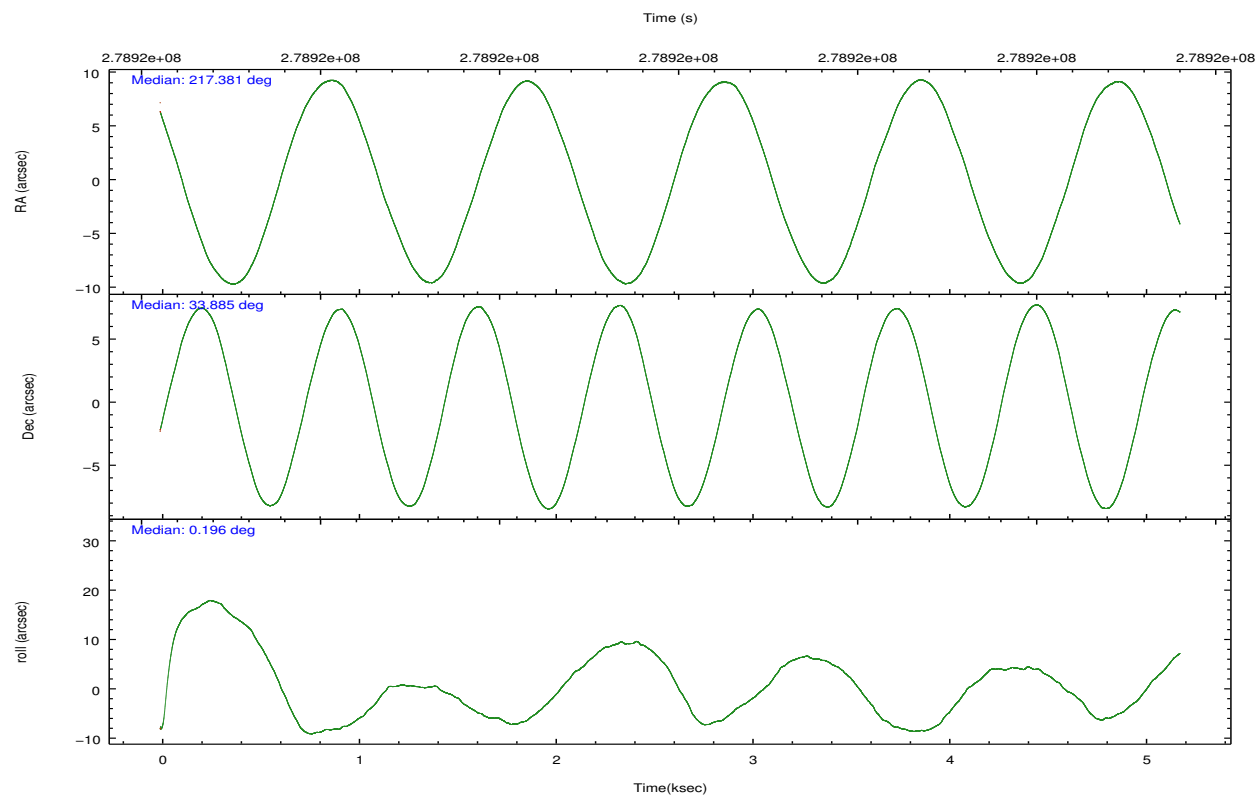
	ccd 0	ccd 1	ccd 2	ccd 3	ccd 6
grade 0 events	1274	2358	1403	1350	1182
	3%	6%	3%	3%	3%
grade 1 events	24	41	25	20	14
	0%	0%	0%	0%	0%
grade 2 events	796	894	748	701	767
	2%	2%	1%	1%	2%
grade 3 events	381	469	330	392	381
	1%	1%	0%	1%	1%
grade 4 events	331	439	359	381	401
	0%	1%	0%	1%	1%
grade 5 events	981	1185	982	1194	1172
	2%	3%	2%	3%	3%
grade 6 events	569	686	573	626	695
	1%	2%	1%	1%	2%
grade 7 events	29756	27714	34478	31293	29454
	87%	82%	88%	87%	86%

2.2 Compared Parameters

Parameter	Planned	Actual	Parameter	Planned	Actual
Instrument	ACIS	ACIS	Obspar format version number	7	7
Detector	ACIS-01236	ACIS-01236	Obspar file type	PREDICTED	ACTUAL
Grating	NONE	NONE	Obspar update status	NONE	UPDATED
Data mode	VFAINT	VFAINT	Number of optional ACIS chips dropped	0	0
Observation mode	POINTING	POINTING	On-chip summing requested	N	N
[deg] Pointing RA	217.352944	217.381420919885	Subarray requested	NONE	NONE
[deg] Pointing Dec	33.871224	33.88516704026382	Alternating exposures requested	N	N
[deg] Pointing Roll	0.012980	0.2057235658878739	[s] Primary exposure time	0.000000	3.1
[mm] SIM focus pos	-0.782348	-0.7809083437167272			
[mm] SIM defocus	0	0.001439871863259334			
[mm] SIM translation stage pos	-233.592463	-233.5874344608287			
[mm] SIM translation stage offset	0	-0.005018542100998502			
[s] Observation start time (MET)	278919530.184000	278919154.15255			
Observation start date	2006-11-03T05:37:45	2006-11-03T05:32:34			
[s] Observation end time (MET)	278924530.184000	278924664.04031			
Observation end date	2006-11-03T07:01:05	2006-11-03T07:04:24			
Read mode	TIMED	TIMED			

2.3 Aspect



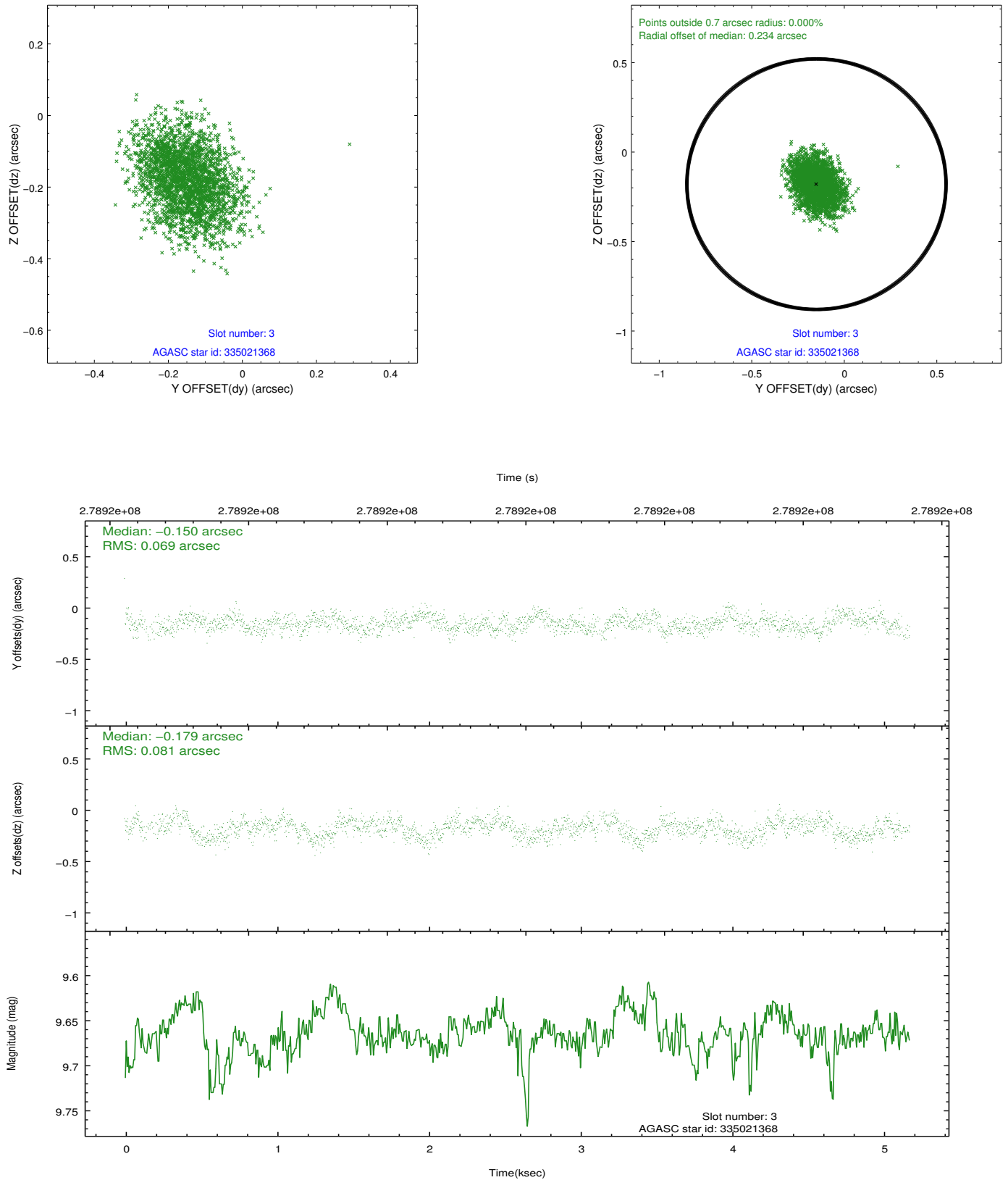


Slot Statistics

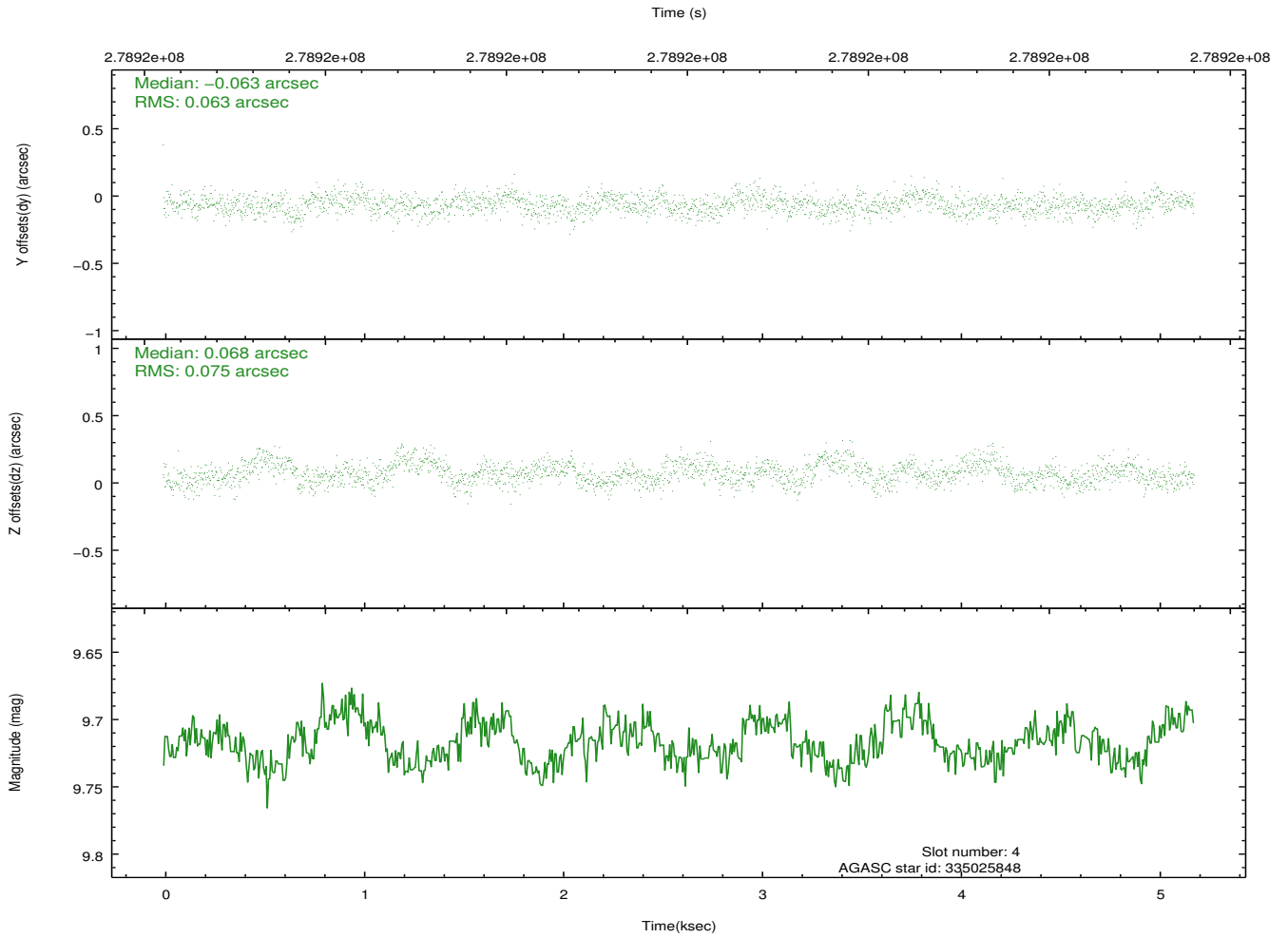
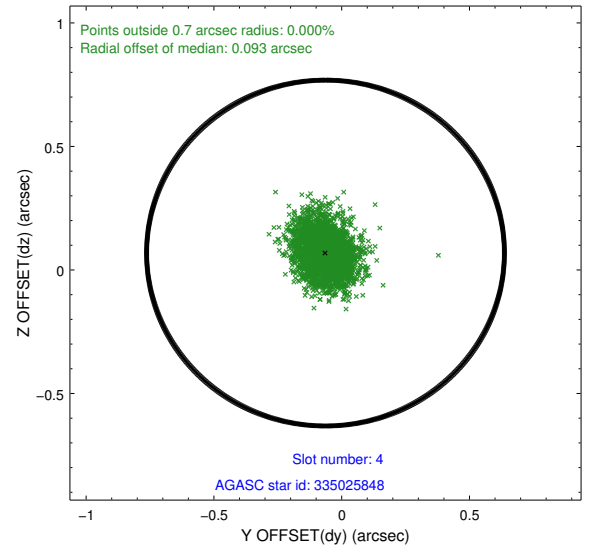
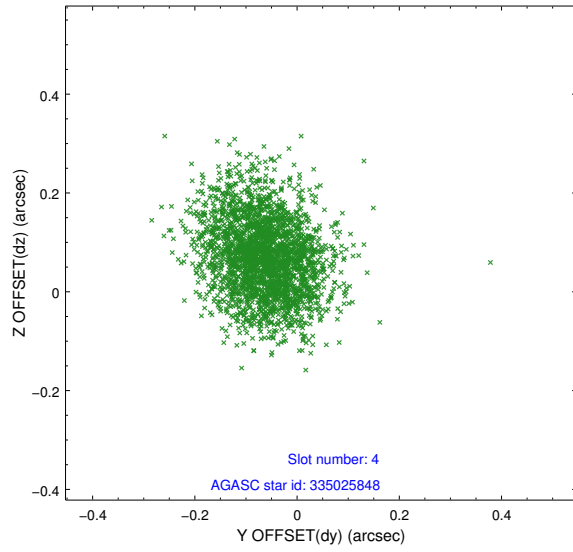
slot	status	id	mag	n_pts	med_dy	med_dz	dr1	dr2	ra	dec	mean_y	mean_z
0	FID	ACIS-I-1	7.24	1265	0.013	0.080	0.007	0.012	0.000000	0.000000	930.09	-836.91
1	FID	ACIS-I-2	7.14	1264	-0.126	-0.067	0.007	0.011	0.000000	0.000000	-763.49	-844.06
2	FID	ACIS-I-6	7.25	1265	0.022	0.054	0.006	0.012	0.000000	0.000000	395.25	1704.29
3	GUIDE	335021368	9.66	2456	-0.150	-0.179	0.114	0.182	217.529643	33.934817	527.61	229.18
4	GUIDE	335025848	9.72	2524	-0.063	0.068	0.104	0.171	217.530531	33.778292	531.55	-334.13
5	GUIDE	335028240	9.16	2525	0.138	0.263	0.088	0.138	216.746851	33.385009	-1822.07	-1744.77
6	GUIDE	335028696	9.18	2528	-0.213	0.016	0.094	0.155	217.260519	33.844112	-277.26	-98.30
7	GUIDE	335027640	9.13	2525	0.293	-0.173	0.109	0.189	218.092211	33.193770	2227.30	-2431.46

2.4 Star Slots

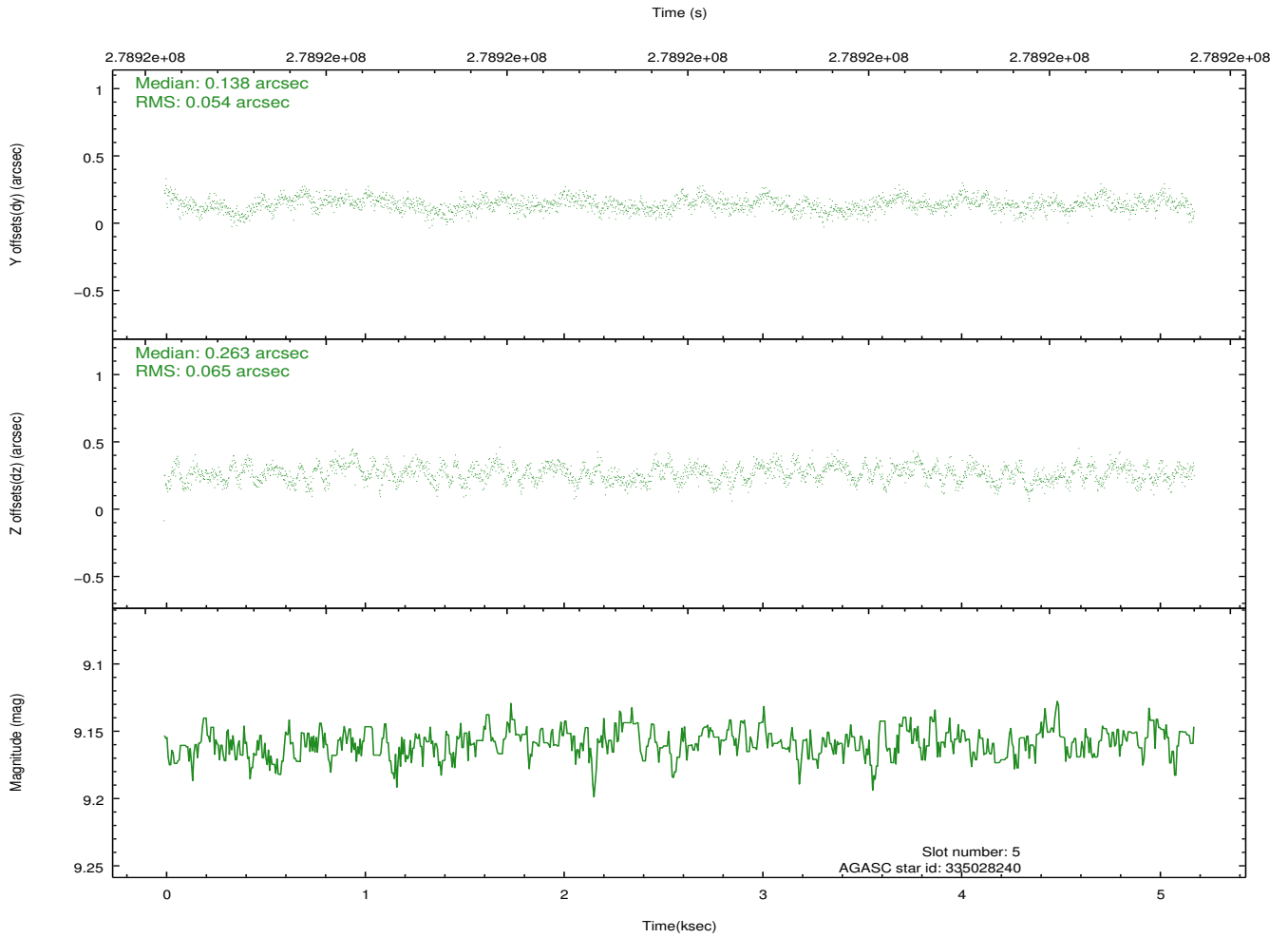
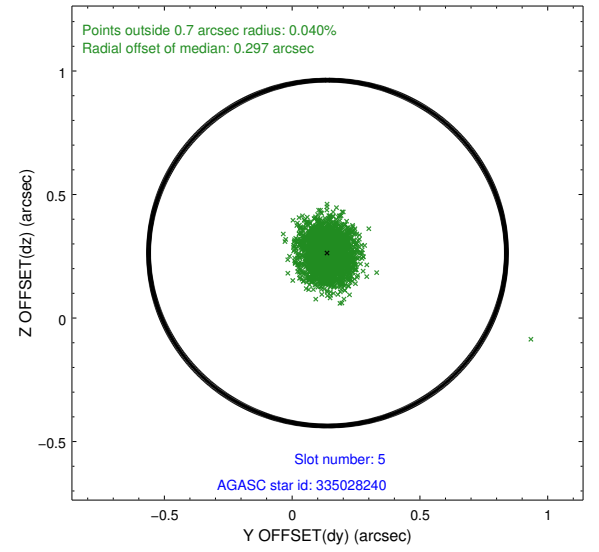
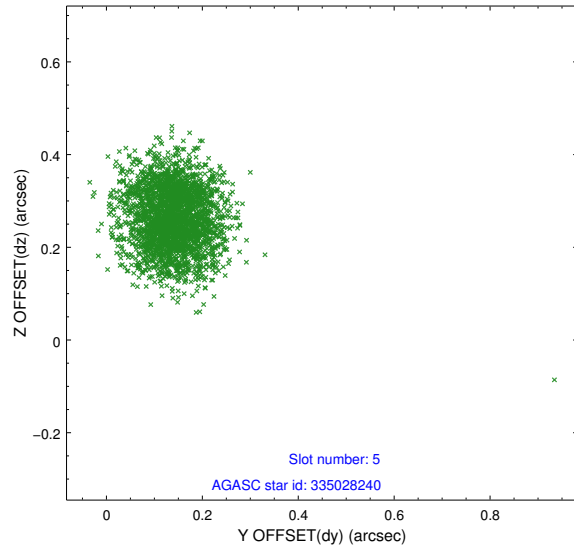
2.4.1 Slot 3



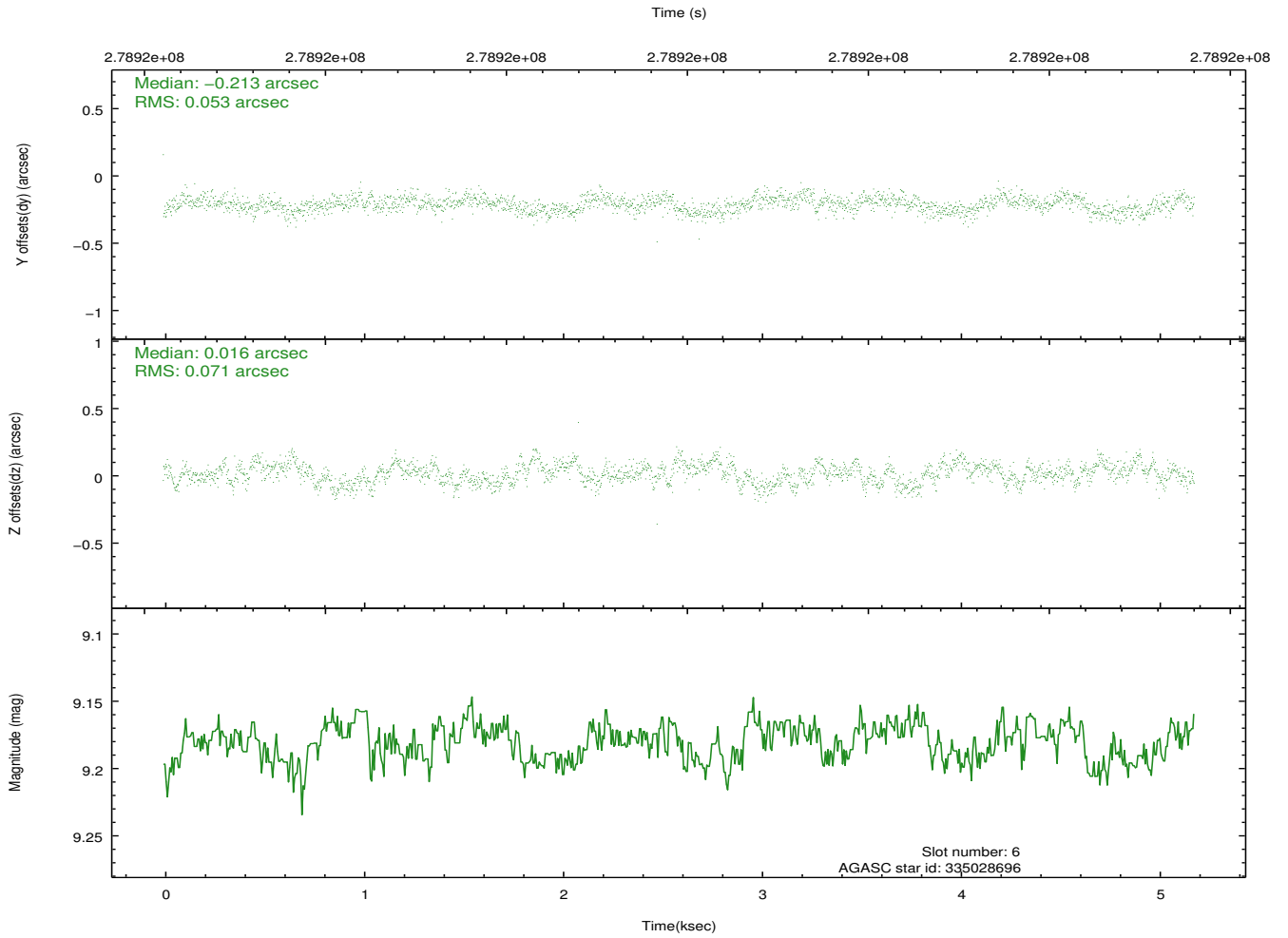
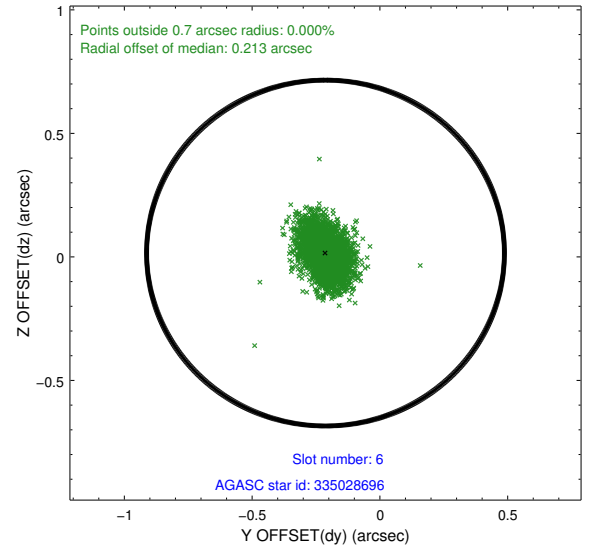
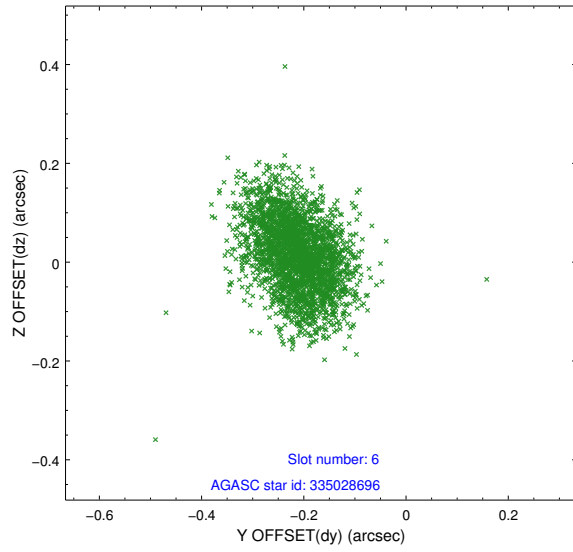
2.4.2 Slot 4



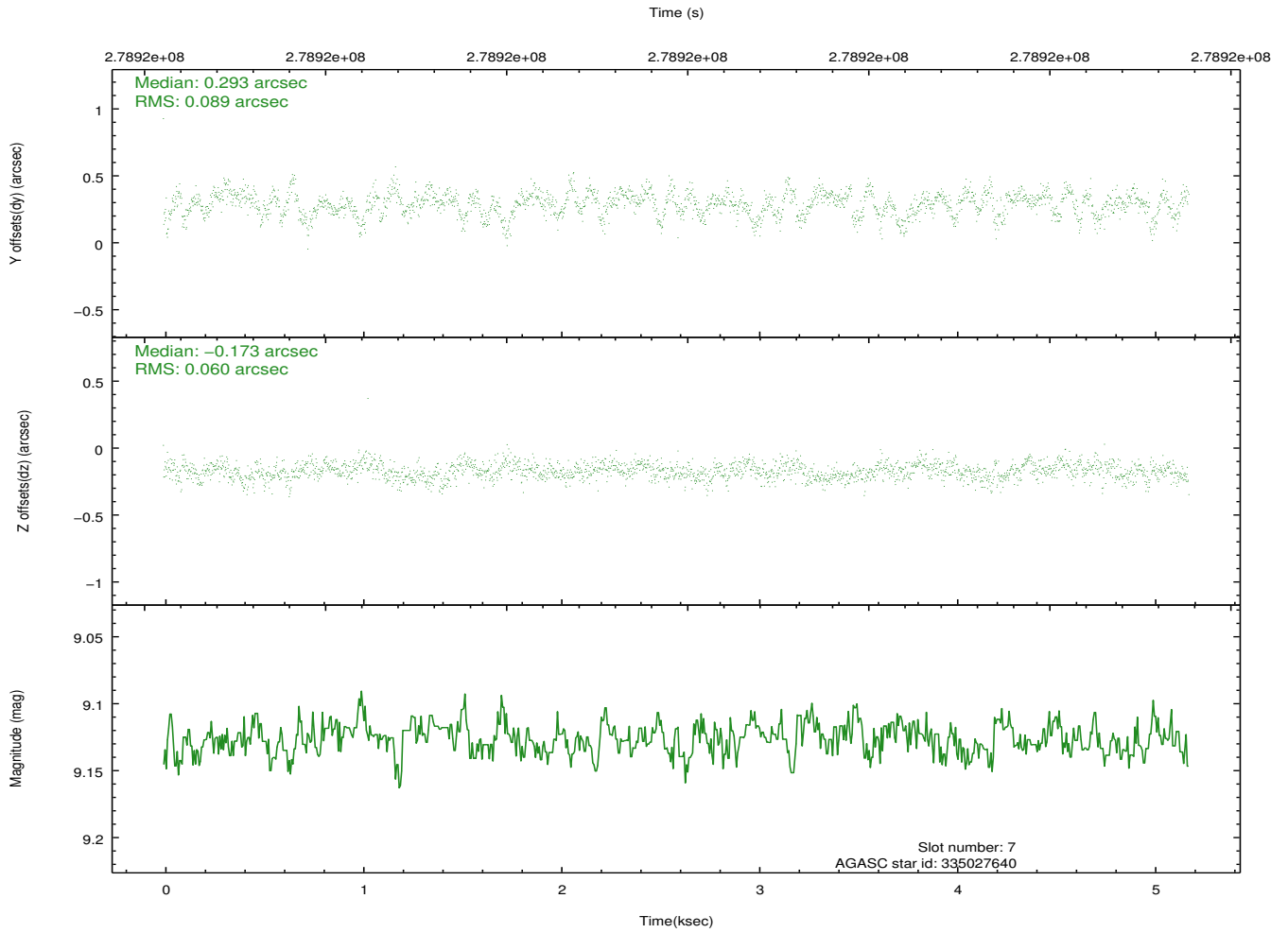
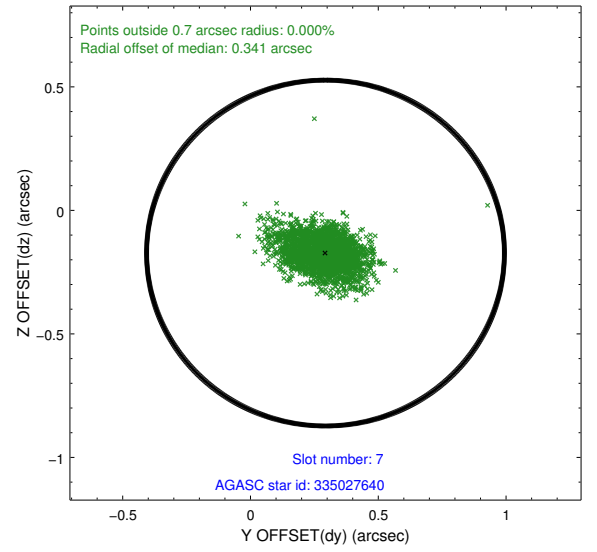
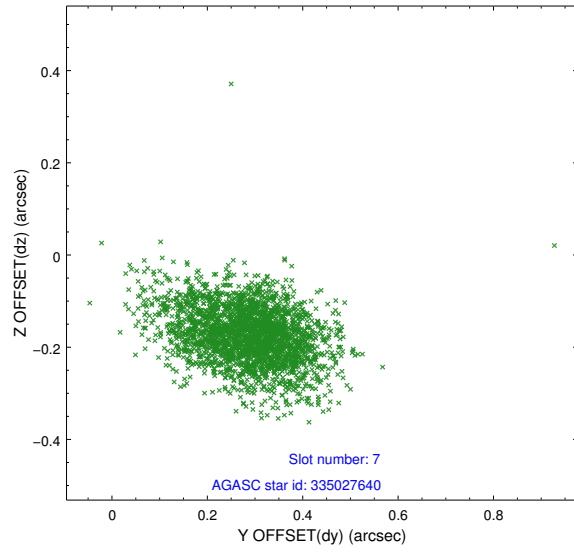
2.4.3 Slot 5



2.4.4 Slot 6

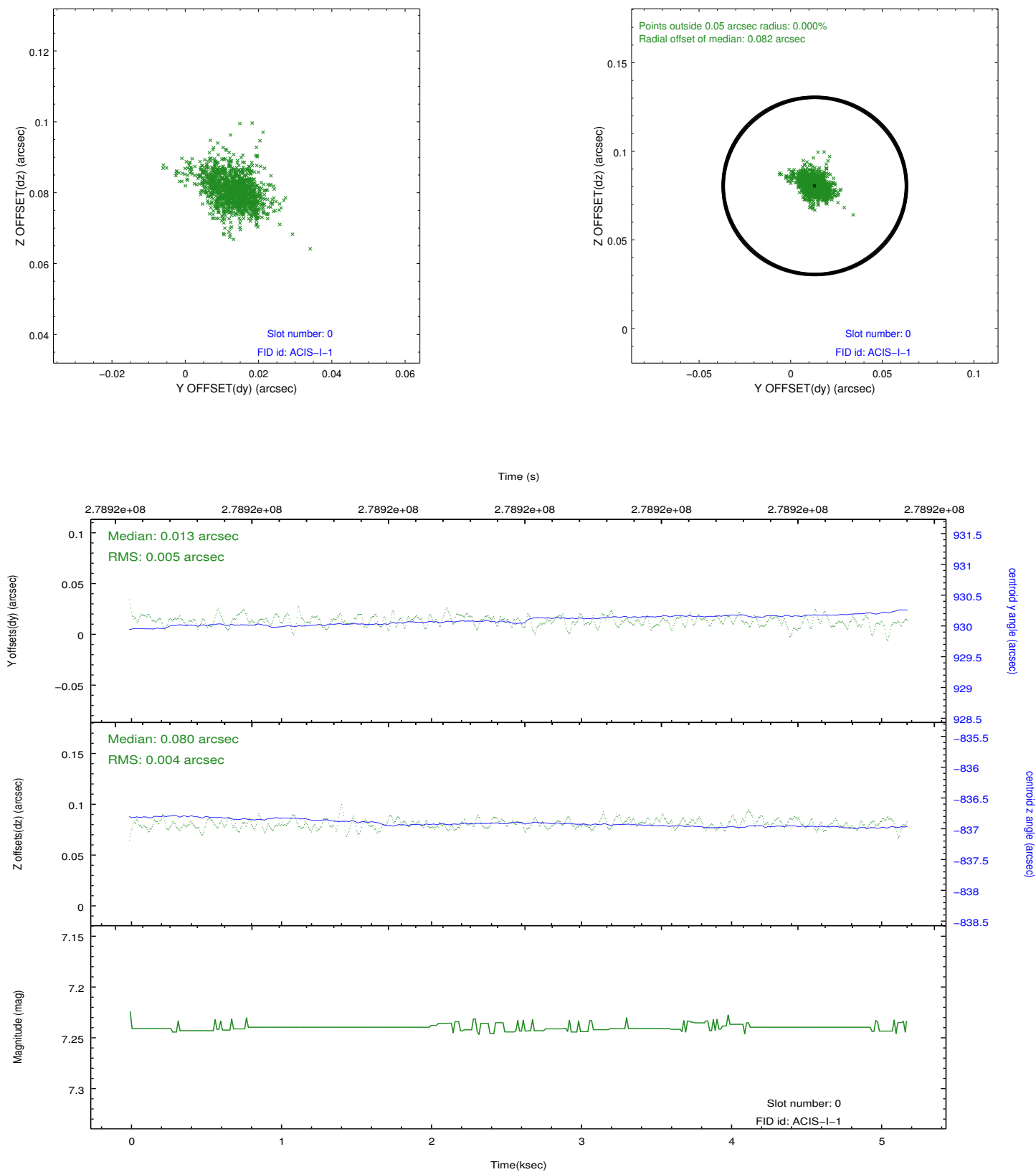


2.4.5 Slot 7

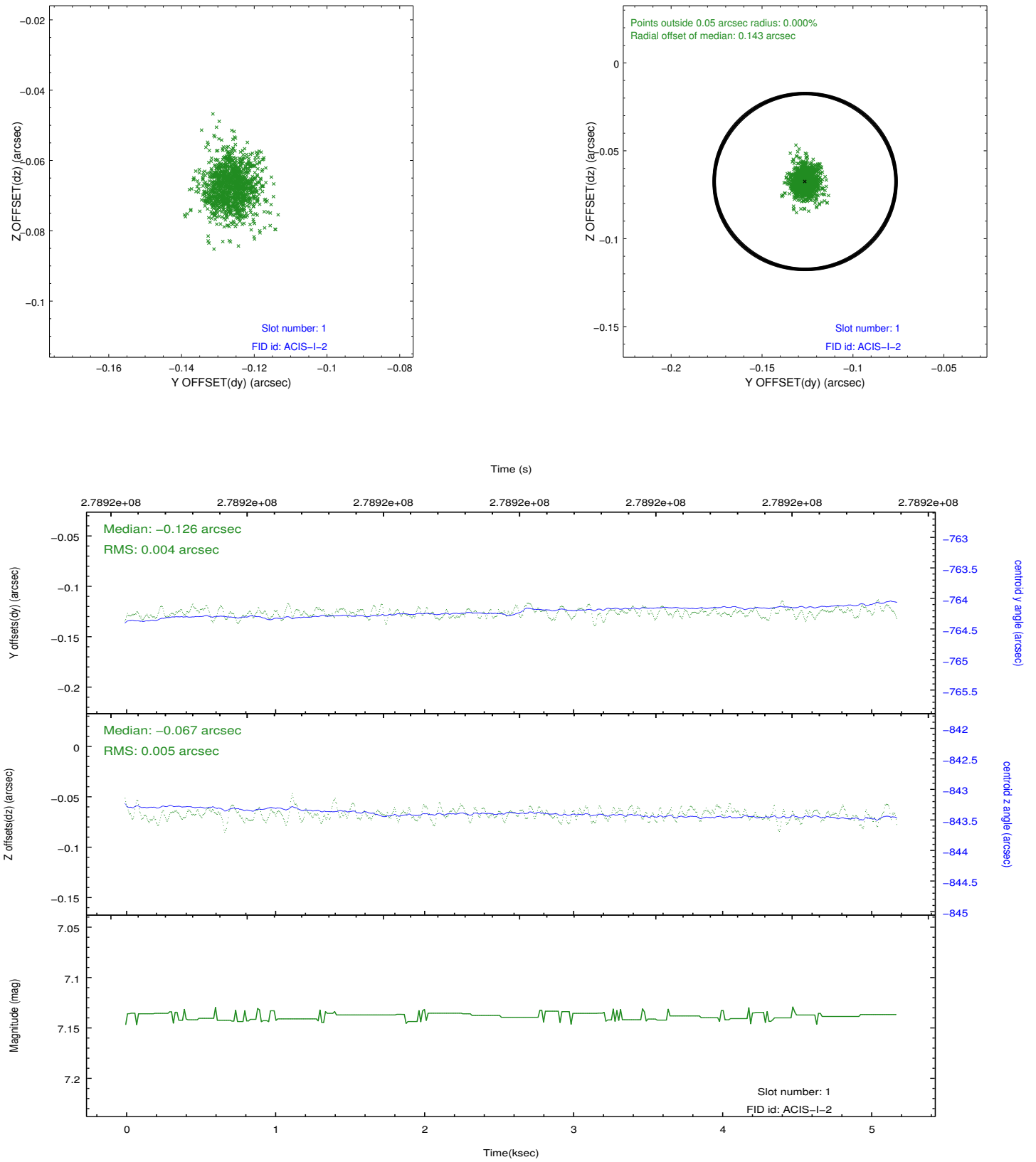


2.5 FID Slots

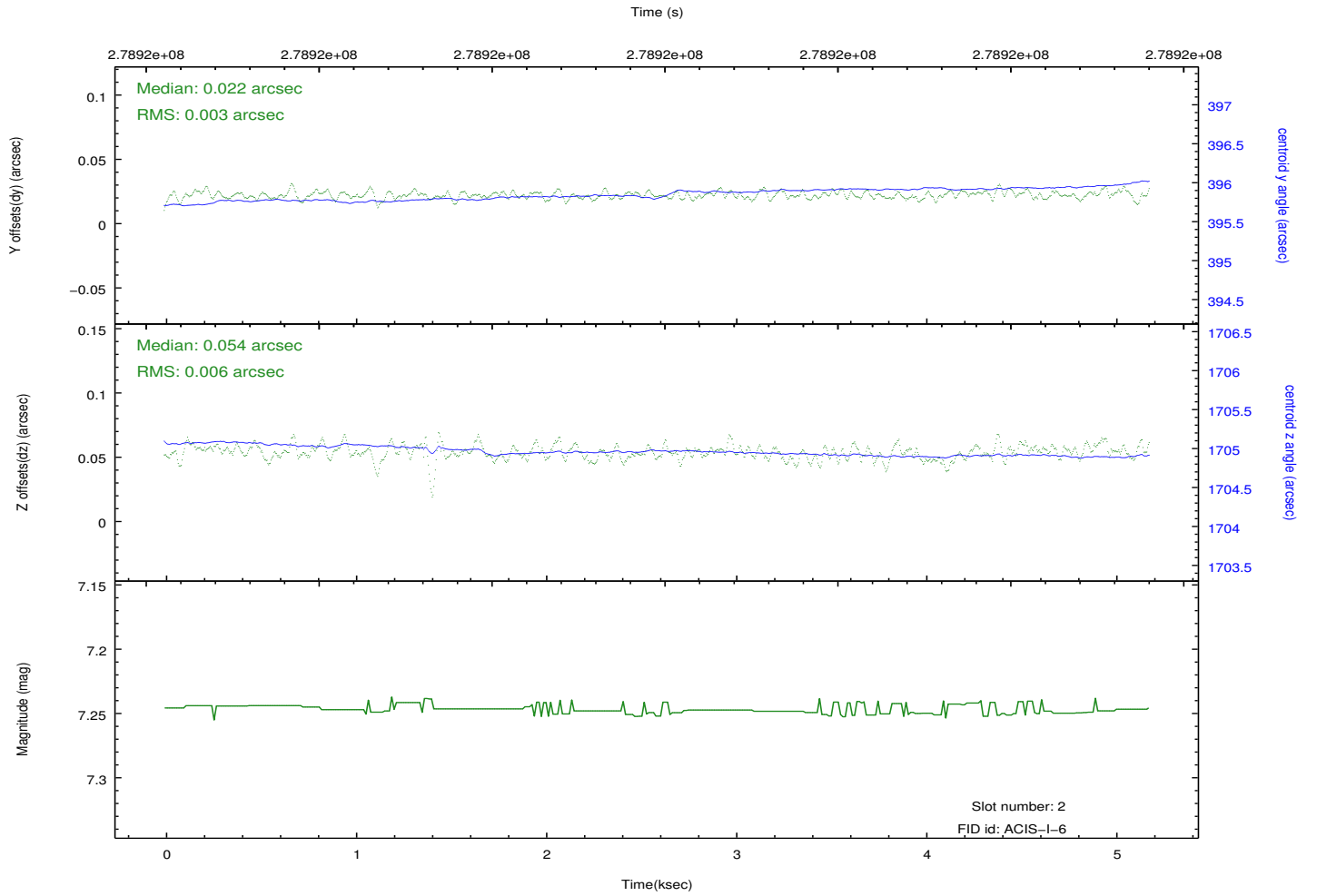
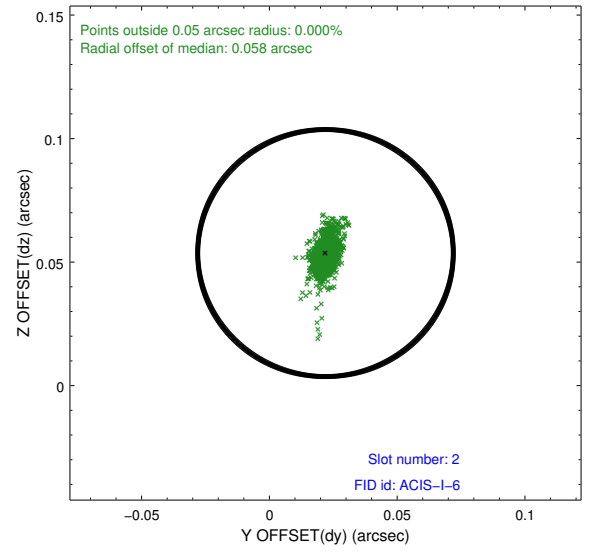
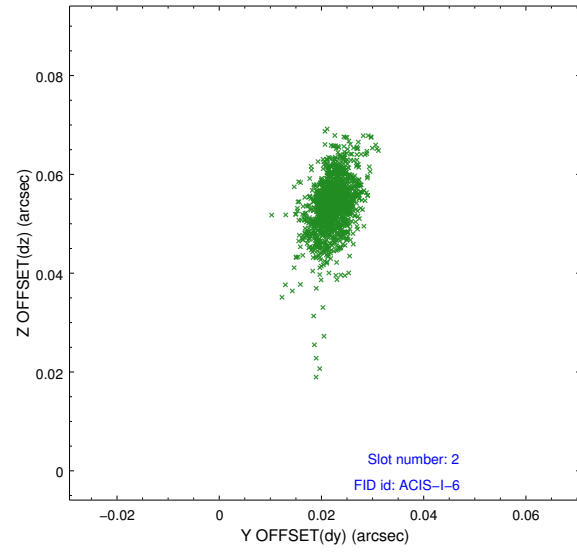
2.5.1 Slot 0



2.5.2 Slot 1



2.5.3 Slot 2



A Summary

A.1 Status

V&V Scientist	Beth Sundheim
V&V Date (YYYY-MM-DD)	2012.04.13
V&V Edition	1
V&V Disposition and Status	OK
V&V Charge Time	4.77710003

A.2 Comments