

V&V Reference Report

L2 ASCDS Version : 8.4.3.1

Observation 6413 - L2 Version 2
Chandra X-Ray Center

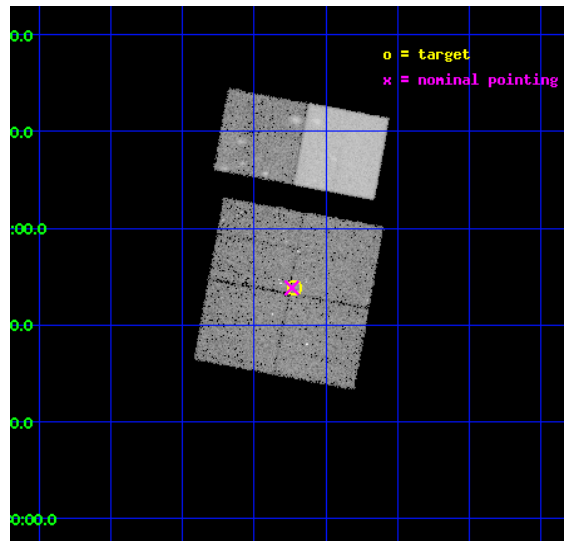
L2 Processing Date : Mar 20 2012

Contents

1	Front	2
2	OBI	3
2.1	OBI	3
2.1.1	Images	3
2.1.2	Bias	3
2.1.3	Parameters	4
2.1.4	Events	4
2.2	Compared Parameters	5
2.3	Aspect	6
2.4	Star Slots	9
2.4.1	Slot 3	9
2.4.2	Slot 4	10
2.4.3	Slot 5	11
2.4.4	Slot 6	12
2.4.5	Slot 7	13
2.5	FID Slots	14
2.5.1	Slot 0	14
2.5.2	Slot 1	15
2.5.3	Slot 2	16
A	Summary	17
A.1	Status	17
A.2	Comments	17

1 Front

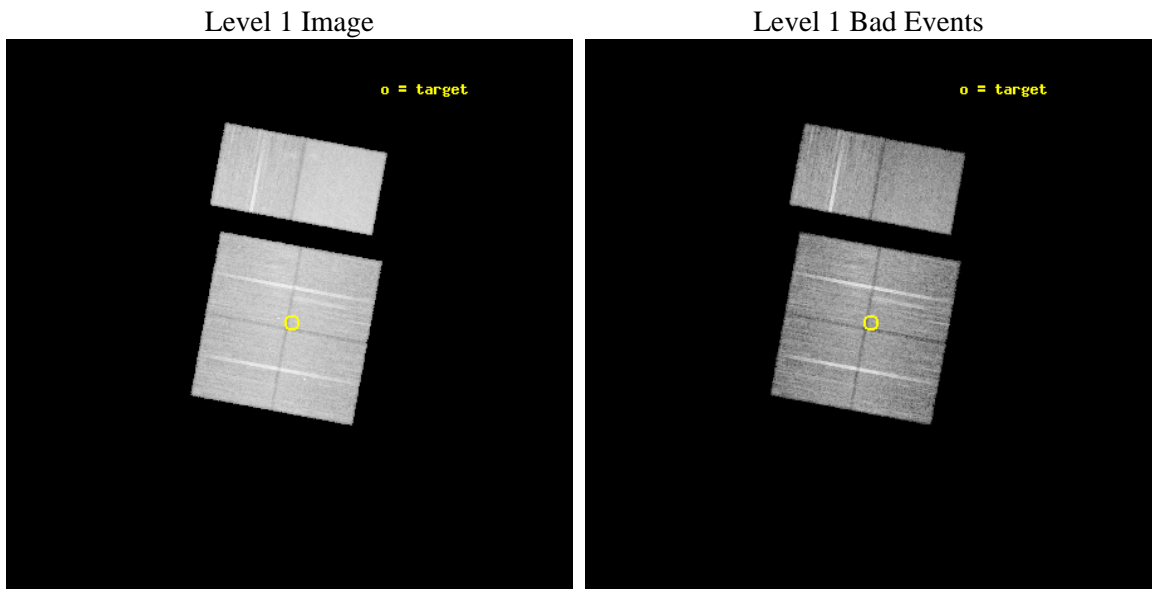
seq_num	200388	Sequence number
obs_id	6413	Observation id
title	CXO Monitoring of V1647 Ori: the X-ray Evolution of Pre-main Sequence Accretion Burst	Proposal title
observer	Dr. Joel Kastner	Principal investigator
object	IRAS05436-0007	Source name
dtcycle	0	
cycle	P	events from which exps? Prim/Second/Both
ra_targ	86.554583	Observer's specified target RA [deg]
dec_targ	-0.101389	Observer's specified target Dec [deg]
ra_nom	86.559126351148	Nominal RA [deg]
dec_nom	-0.10237012609733	Nominal Dec [deg]
roll_nom	10.495433987047	Nominal Roll [deg]
revision	2	Processing version of data
ontime	18332.799931705	Sum of GTIs [s]
livetime	18100.658980283	Livetime [s]
ontime0	18332.799931705	Sum of GTIs [s]
ontime1	18332.799931705	Sum of GTIs [s]
ontime2	18329.558951437	Sum of GTIs [s]
ontime3	18332.799931705	Sum of GTIs [s]
ontime6	18332.799931705	Sum of GTIs [s]
ontime7	18332.799931705	Sum of GTIs [s]
l2events	160680	Number of level 2 events



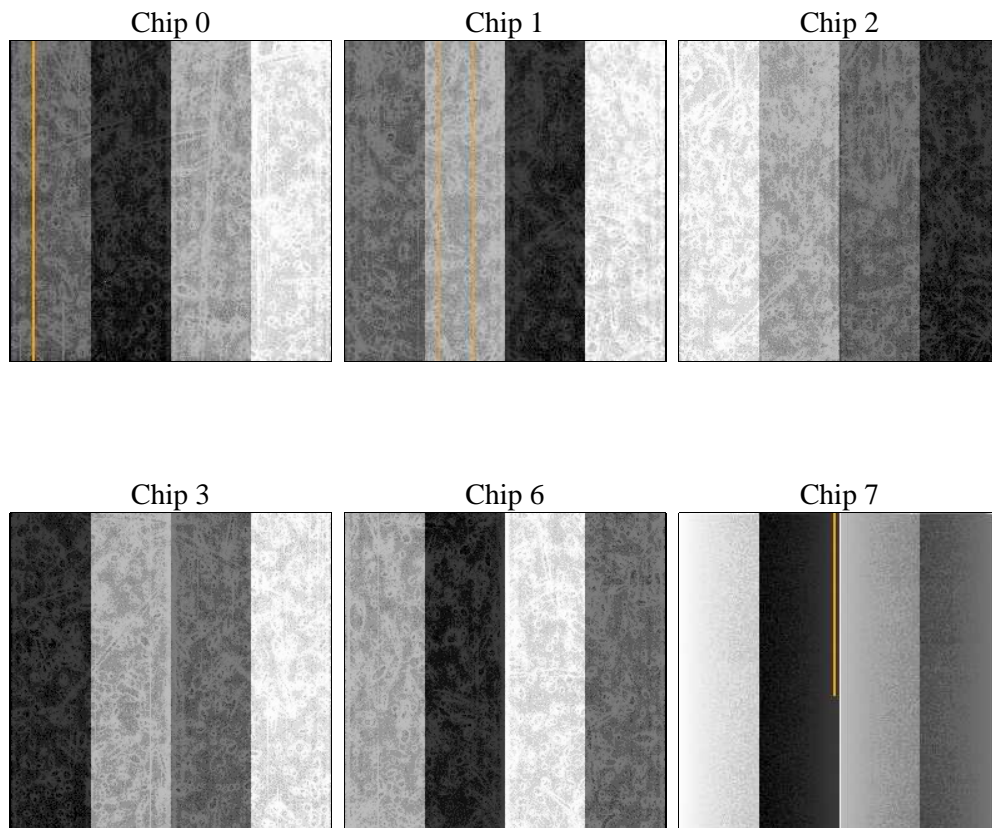
2 OBI

2.1 OBI

2.1.1 Images



2.1.2 Bias



2.1.3 Parameters

obi_num	0	Obi number	sched_exp_time	18200.000000	[s] Scheduled observation exposure time
ascdsver	8.4.3	Processing system revision	ontime	18332.799931705	Sum of GTIs [s]
caldsver	4.4.8	 	ontime0	18332.799931705	Sum of GTIs [s]
date	2012-03-20T02:41:29	Date and time of file creation	ontime1	18332.799931705	Sum of GTIs [s]
revision	2	Processing version of data	ontime2	18329.558951437	Sum of GTIs [s]
			ontime3	18332.799931705	Sum of GTIs [s]
			ontime6	18332.799931705	Sum of GTIs [s]
			ontime7	18332.799931705	Sum of GTIs [s]
			l1events	952207	Number of level 1 events

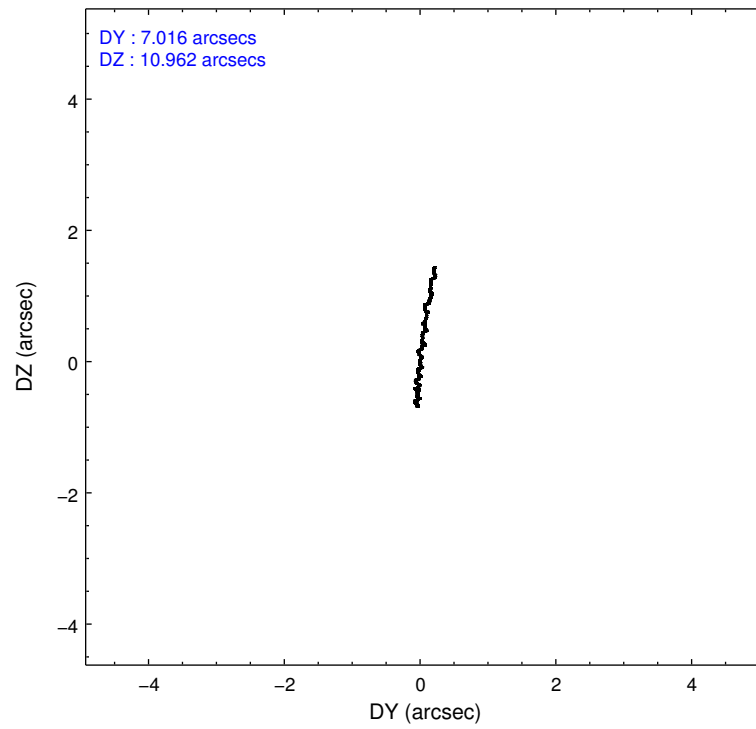
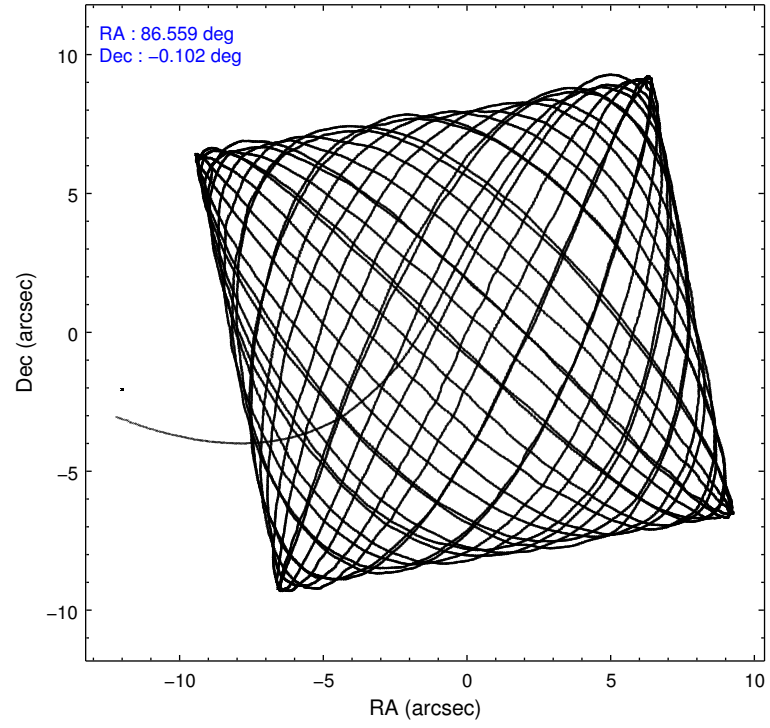
2.1.4 Events

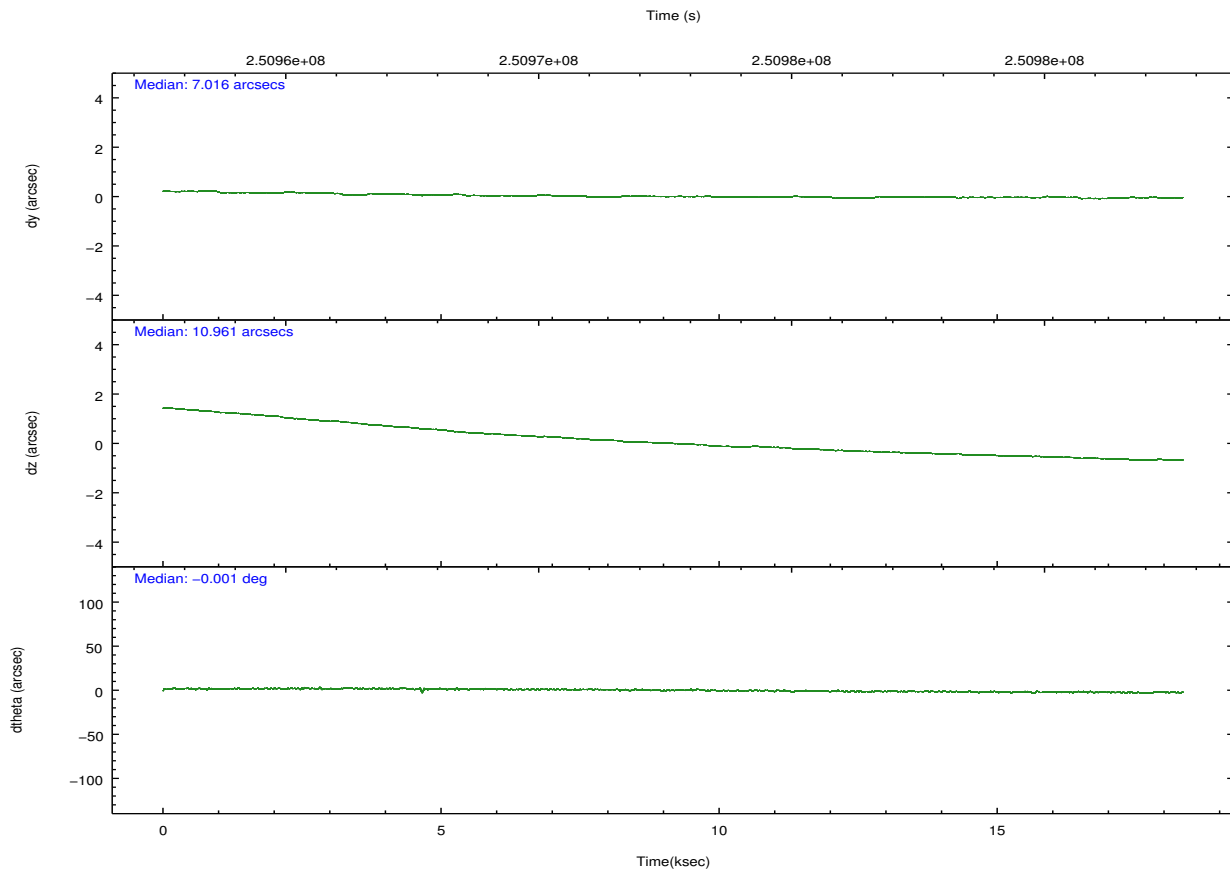
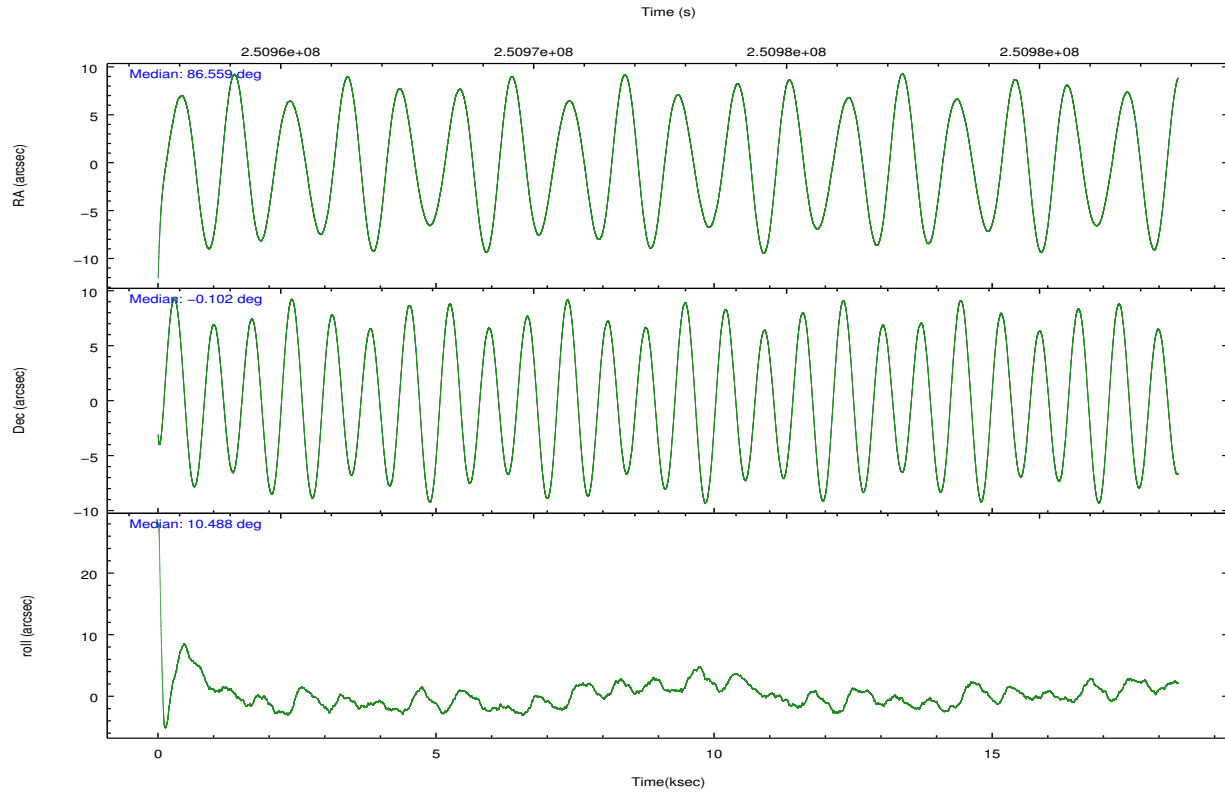
	ccd 0	ccd 1	ccd 2	ccd 3	ccd 6	ccd 7		ccd 0	ccd 1	ccd 2	ccd 3	ccd 6	ccd 7
level 1 events	139354	138694	157745	145906	162568	207940	grade 0 events	7734	7765	8048	7890	8215	7508
rejected events	121577	119561	139915	128436	143668	123663		5%	5%	5%	5%	5%	3%
rejected %	87%	86%	88%	88%	88%	59%	grade 1 events	91	66	116	100	77	202
								0%	0%	0%	0%	0%	0%
							grade 2 events	3839	4253	3847	3434	4046	17339
								2%	3%	2%	2%	2%	8%
							grade 3 events	1868	2002	1737	1778	1700	7755
								1%	1%	1%	1%	1%	3%
							grade 4 events	1656	1906	1752	1659	1702	7498
								1%	1%	1%	1%	1%	3%
							grade 5 events	6028	6510	5748	6659	7255	19673
								4%	4%	3%	4%	4%	9%
							grade 6 events	3162	3763	2973	3195	3743	46470
								2%	2%	1%	2%	2%	22%
							grade 7 events	114976	112429	133524	121191	135830	101495
								82%	81%	84%	83%	83%	48%

2.2 Compared Parameters

Parameter	Planned	Actual	Parameter	Planned	Actual
Instrument	ACIS	ACIS	Obspar format version number	7	7
Detector	ACIS-012367	ACIS-012367	Obspar file type	PREDICTED	ACTUAL
Grating	NONE	NONE	Obspar update status	NONE	UPDATED
Data mode	FAINT	FAINT	Number of optional ACIS chips dropped	0	0
Observation mode	POINTING	POINTING	On-chip summing requested	N	N
[deg] Pointing RA	86.538357	86.55912635114815	Subarray requested	NONE	NONE
[deg] Pointing Dec	-0.120257	-0.1023701260973309	Alternating exposures requested	N	N
[deg] Pointing Roll	10.286686	10.4954339870473	[s] Primary exposure time	0.000000	3.2
[mm] SIM focus pos	-0.782348	-0.7809083437167272			
[mm] SIM defocus	0	0.001439871863259334			
[mm] SIM translation stage pos	-233.592463	-233.5874344608287			
[mm] SIM translation stage offset	0	-0.005018542100998502			
[s] Observation start time (MET)	250963629.184000	250962317.82158			
Observation start date	2005-12-14T16:06:05	2005-12-14T15:45:17			
[s] Observation end time (MET)	250981829.184000	250982876.76003			
Observation end date	2005-12-14T21:09:25	2005-12-14T21:27:56			
Read mode	TIMED	TIMED			

2.3 Aspect



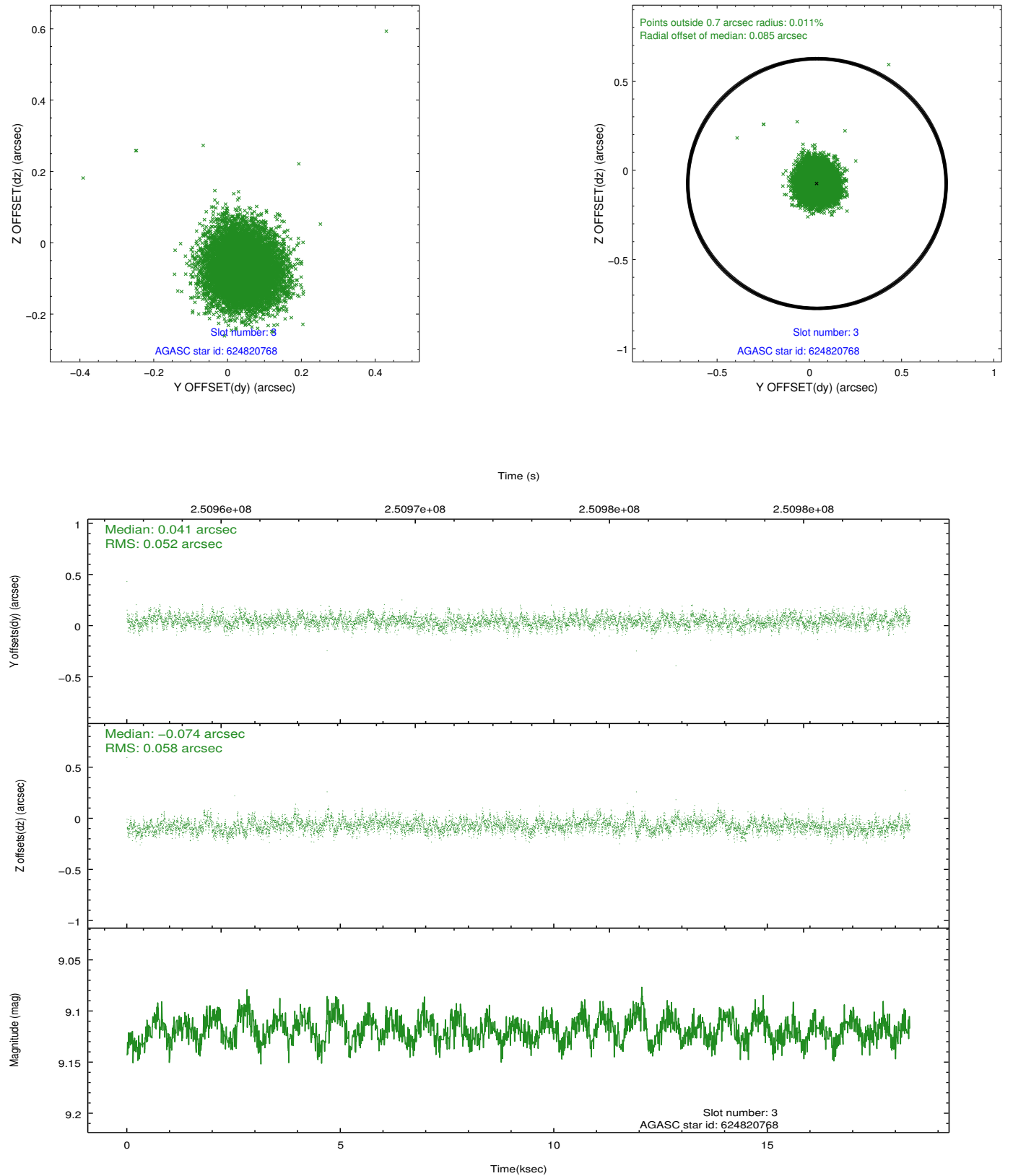


Slot Statistics

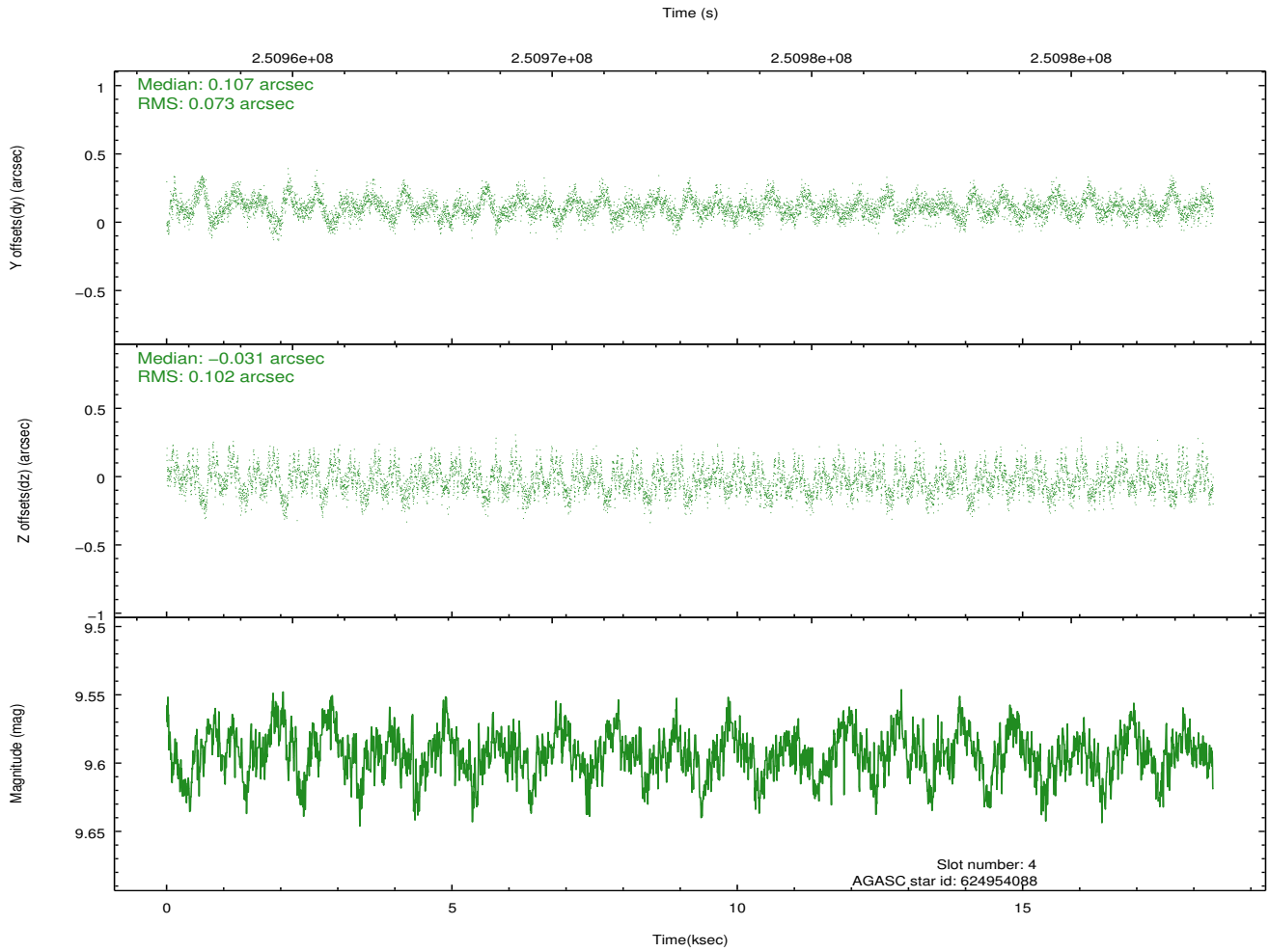
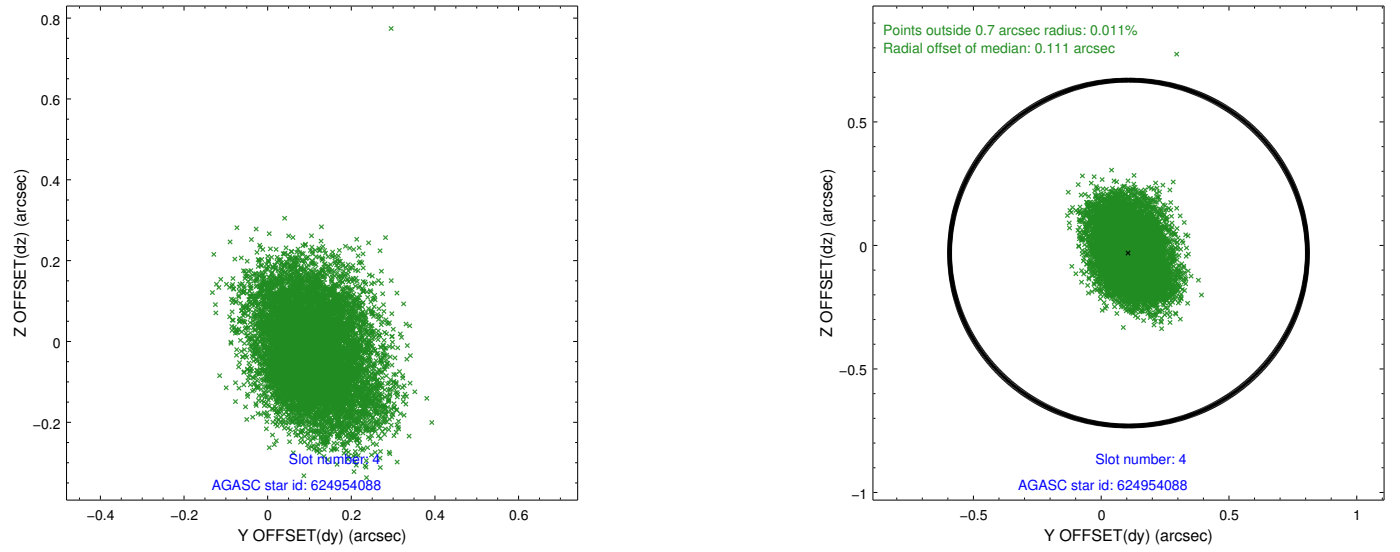
slot	status	id	mag	n_pts	med_dy	med_dz	dr1	dr2	ra	dec	mean_y	mean_z
0	FID	ACIS-I-1	7.25	4473	0.039	-0.025	0.021	0.039	0.000000	0.000000	932.66	-834.63
1	FID	ACIS-I-5	7.23	4473	-0.164	0.052	0.016	0.027	0.000000	0.000000	-1815.50	1062.87
2	FID	ACIS-I-6	7.25	4473	0.036	0.045	0.015	0.041	0.000000	0.000000	398.01	1707.57
3	GUIDE	624820768	9.12	8941	0.041	-0.074	0.083	0.132	86.202480	-0.061953	-1151.90	422.37
4	GUIDE	624954088	9.59	8937	0.107	-0.031	0.133	0.220	86.606399	-0.671650	-112.86	-1996.69
5	GUIDE	624955288	9.59	8938	0.063	-0.128	0.111	0.177	87.070368	-0.669957	1531.76	-2289.17
6	GUIDE	624954400	9.16	8939	-0.125	0.099	0.127	0.207	86.607838	-0.762568	-166.11	-2319.85
7	GUIDE	624953040	8.70	8941	-0.090	0.137	0.101	0.162	87.231595	-0.668980	2103.67	-2389.61

2.4 Star Slots

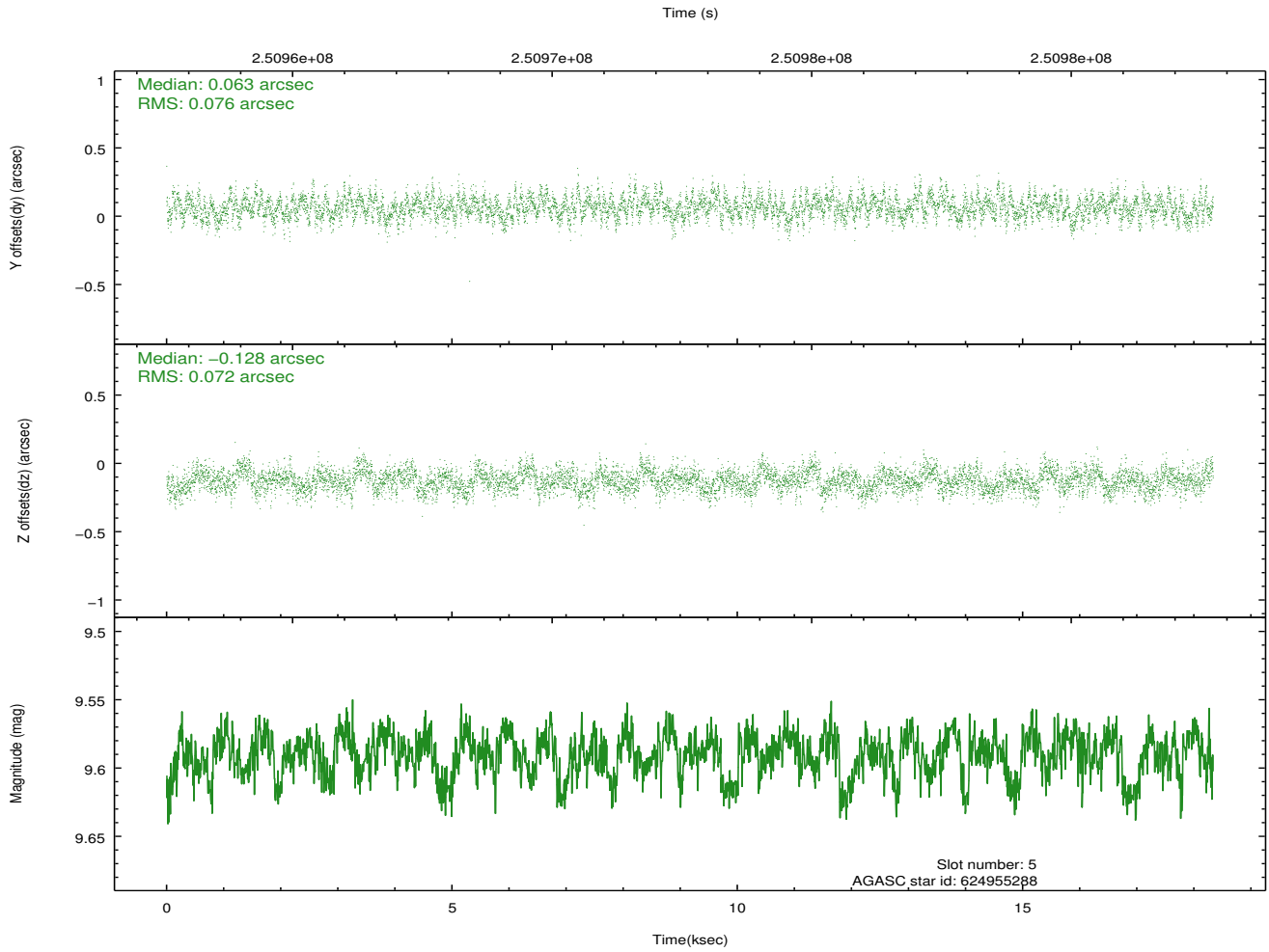
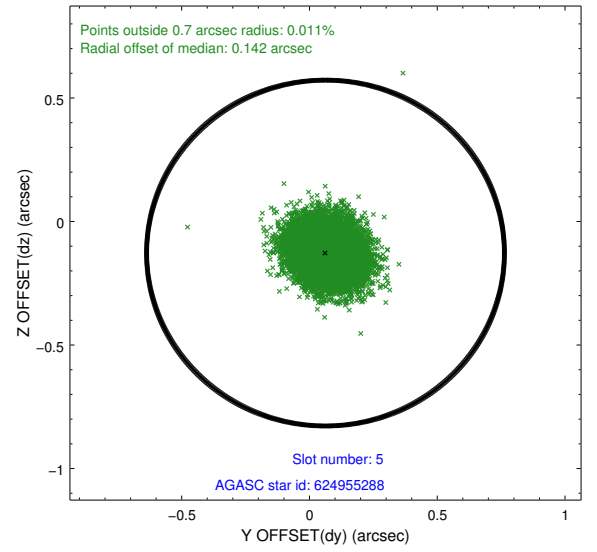
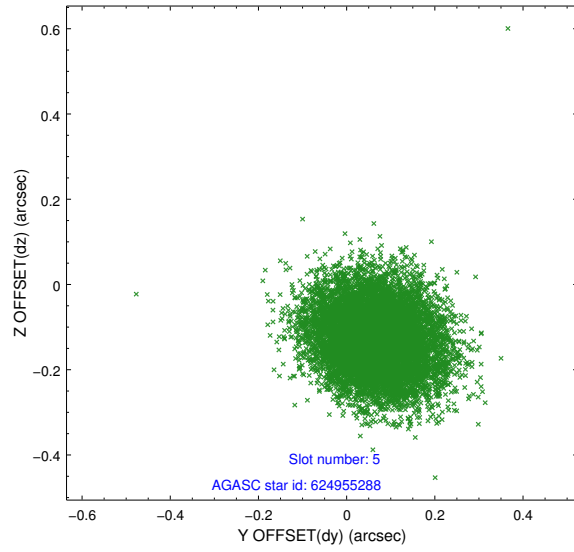
2.4.1 Slot 3



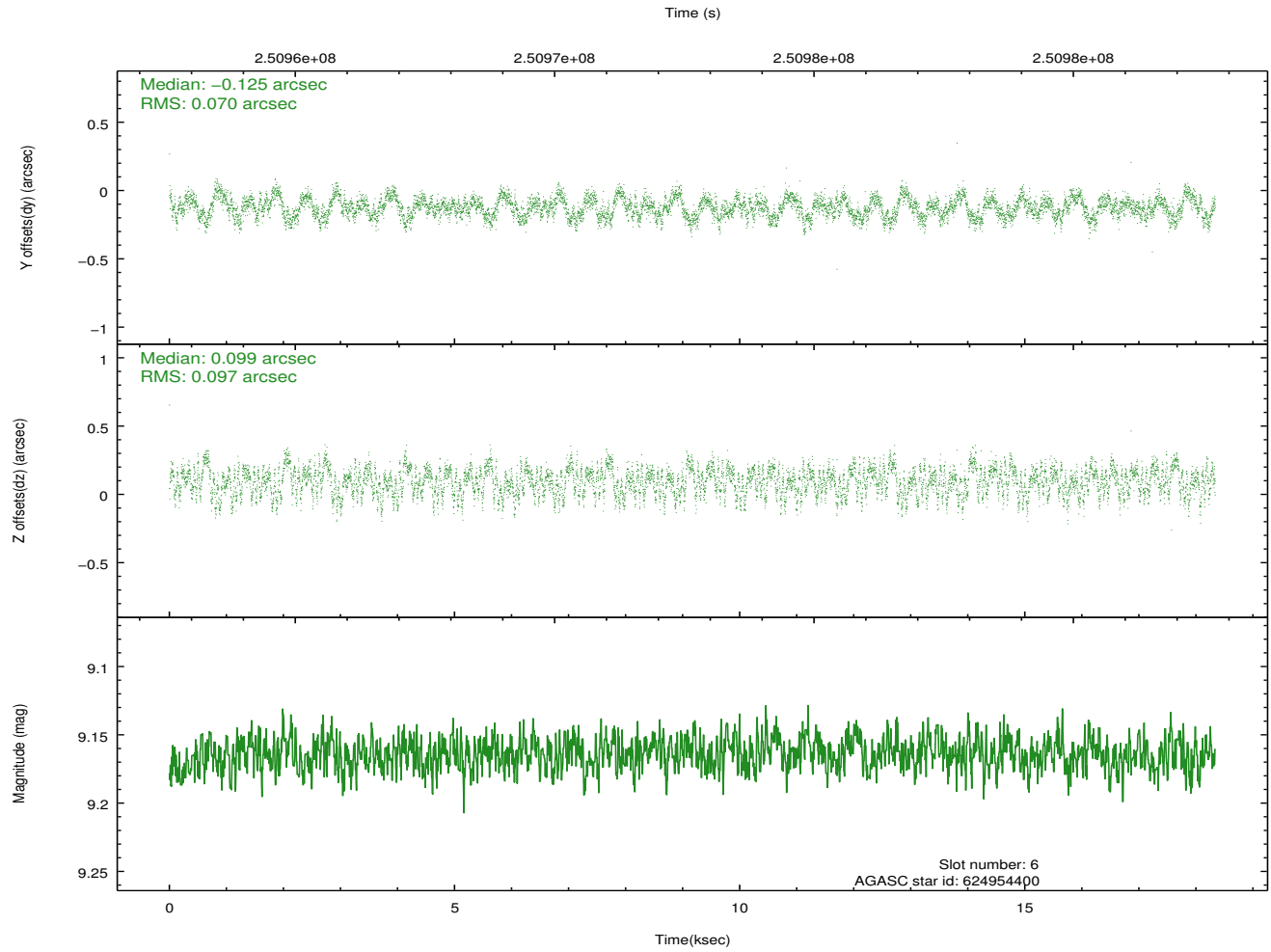
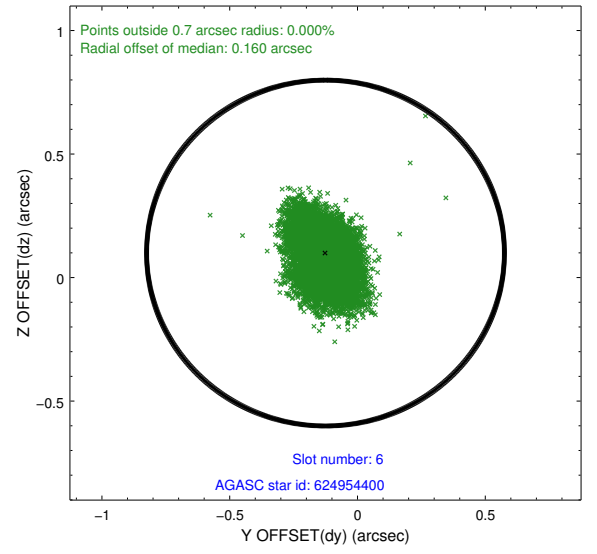
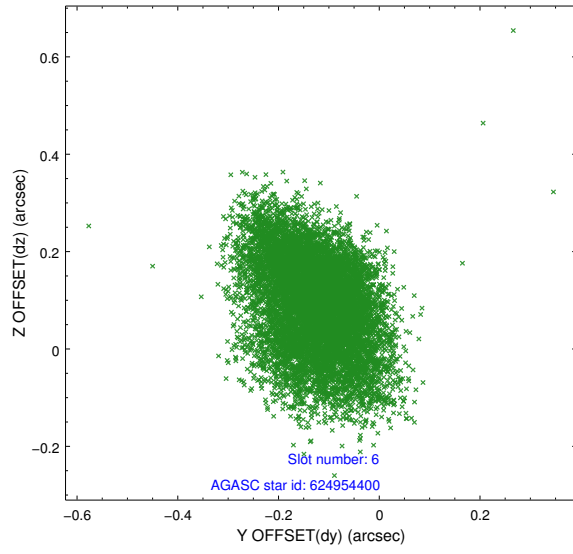
2.4.2 Slot 4



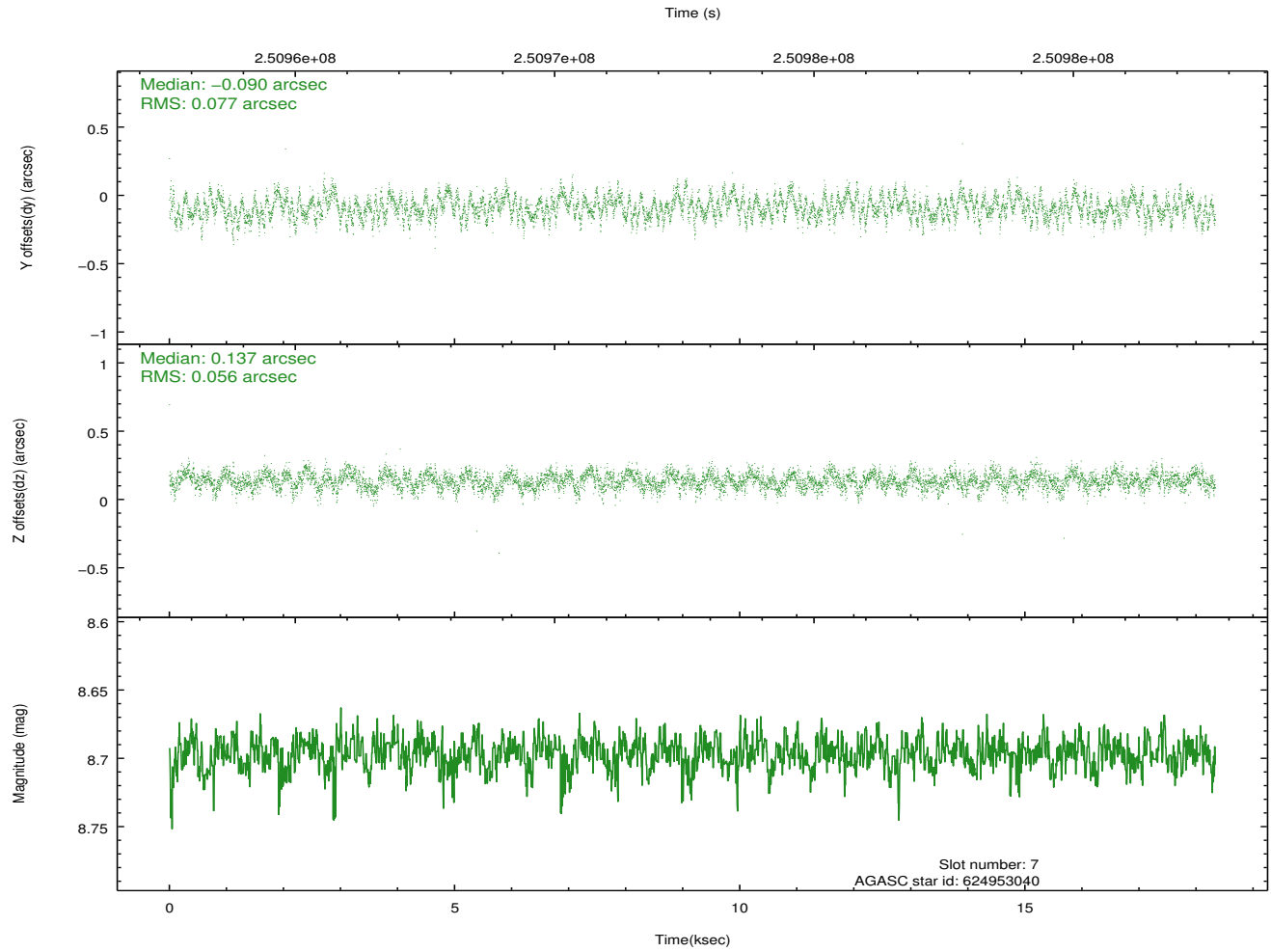
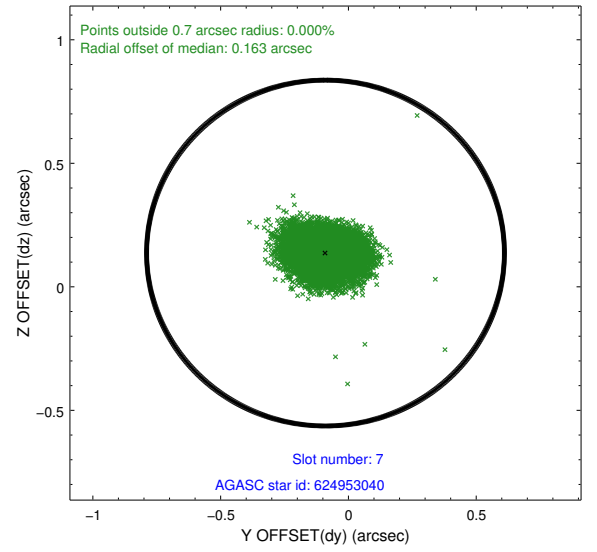
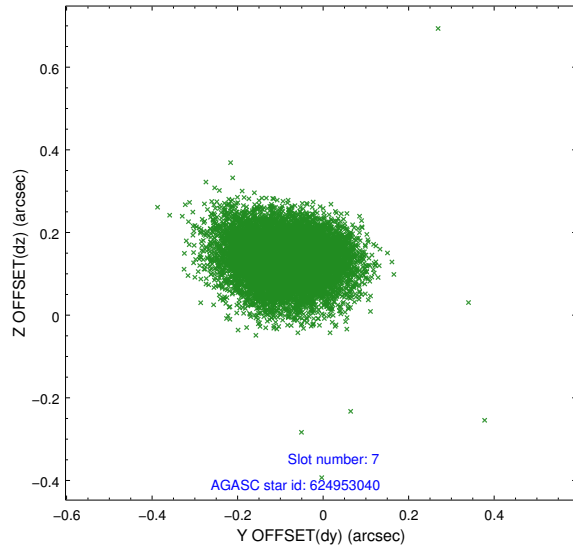
2.4.3 Slot 5



2.4.4 Slot 6

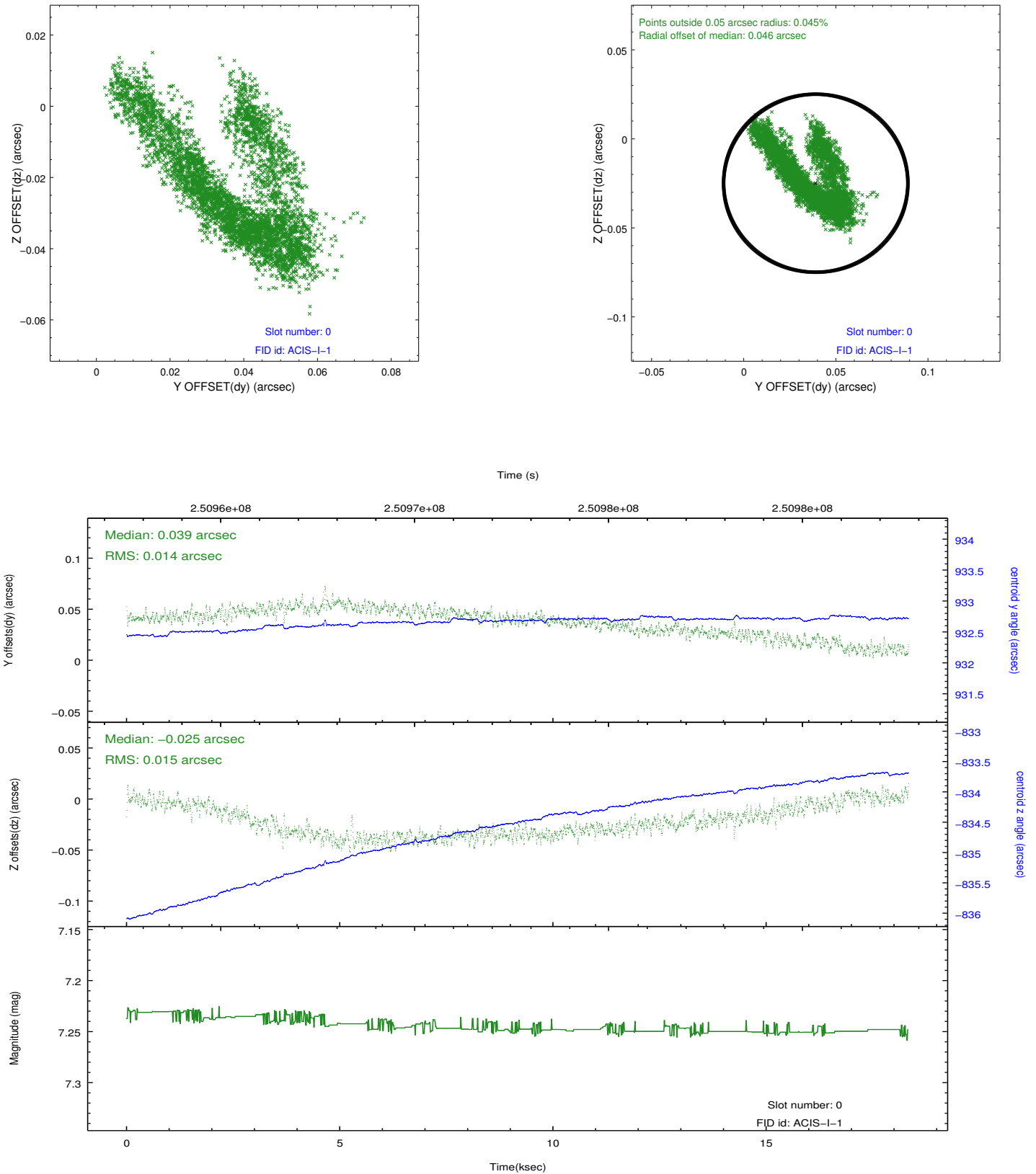


2.4.5 Slot 7

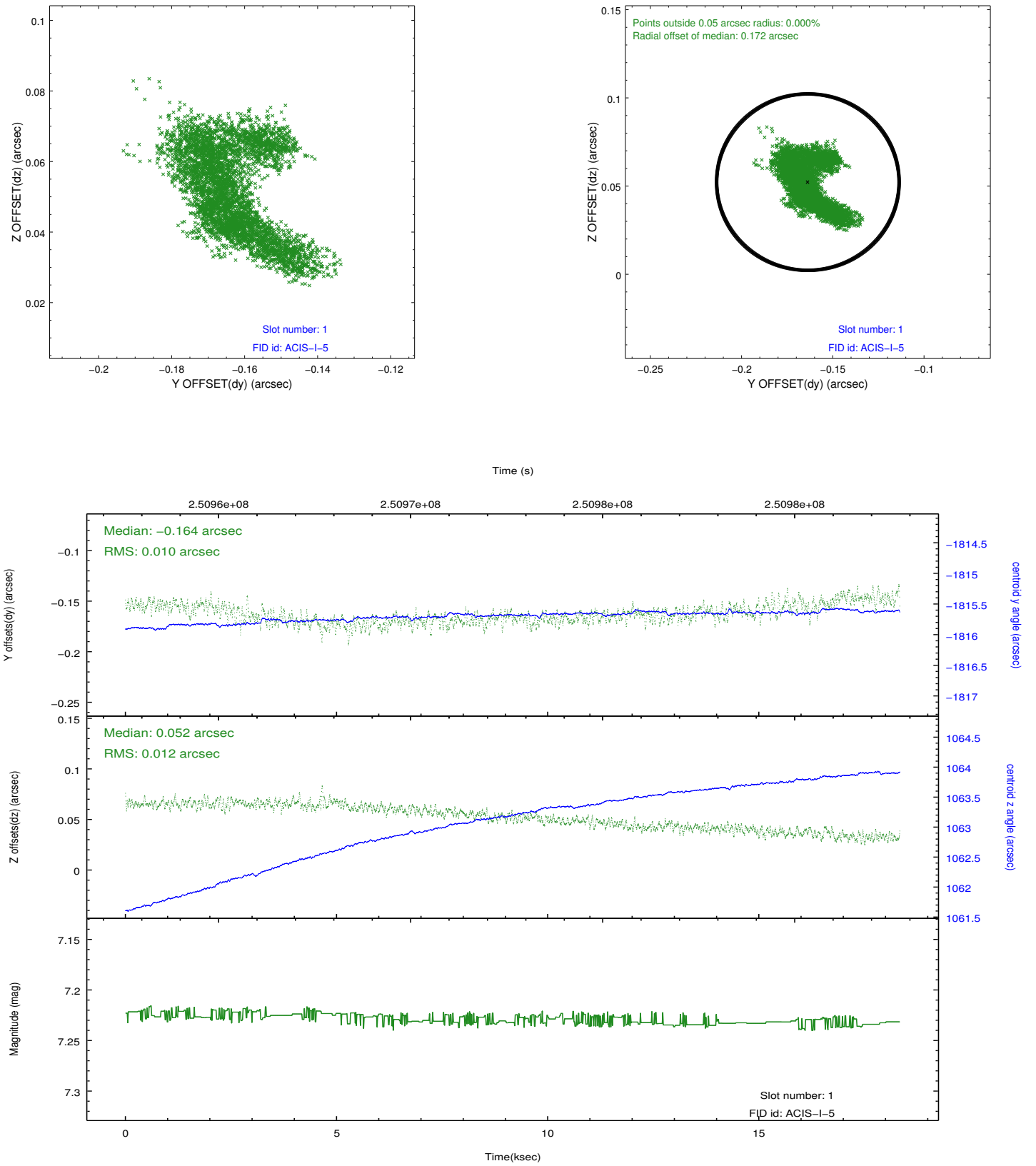


2.5 FID Slots

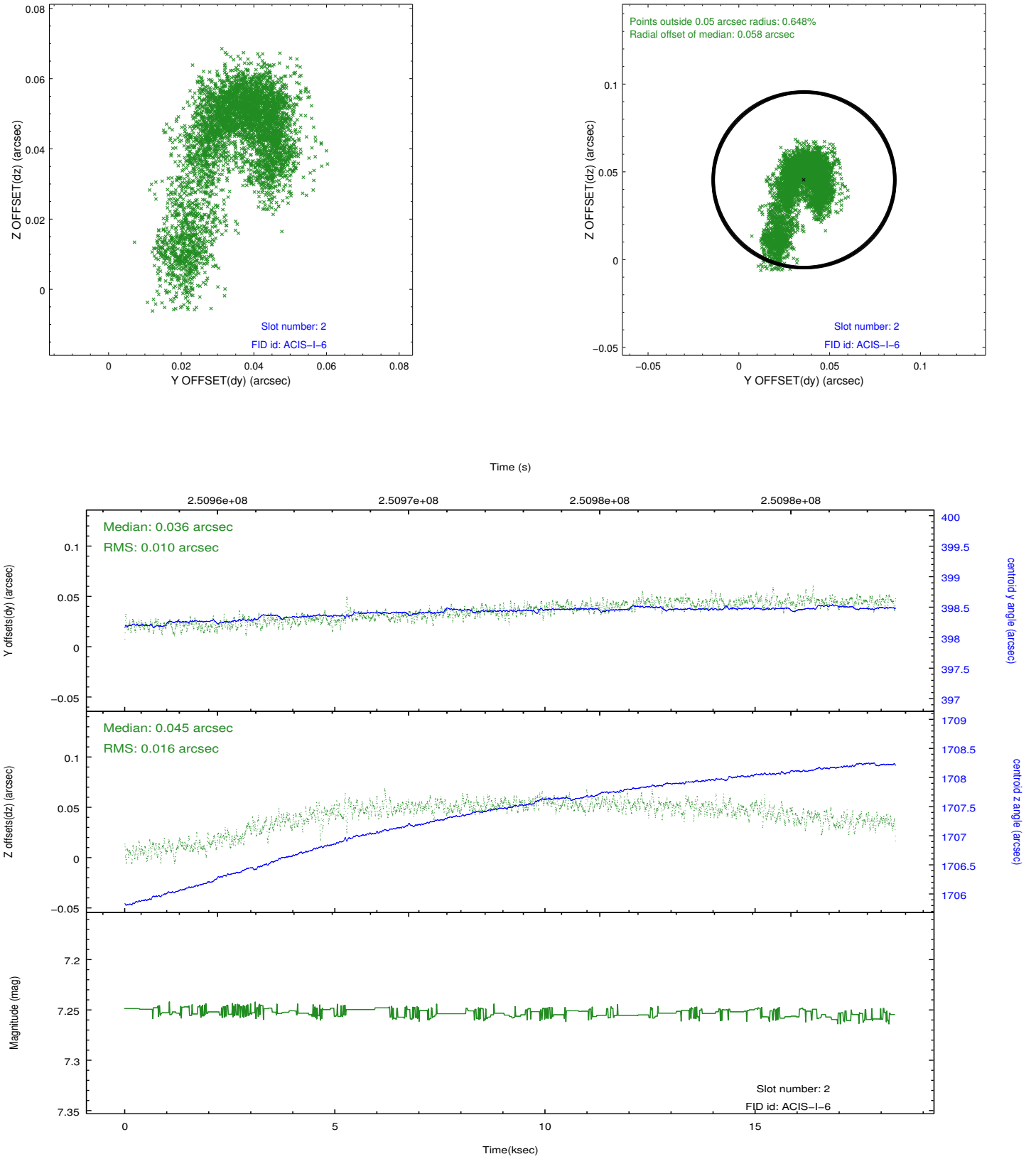
2.5.1 Slot 0



2.5.2 Slot 1



2.5.3 Slot 2



A Summary

A.1 Status

V&V Scientist	Jen Lauer
V&V Date (YYYY-MM-DD)	2012.03.20
V&V Edition	1
V&V Disposition and Status	OK
V&V Charge Time	18.33279

A.2 Comments