

V&V Reference Report

L2 ASCDS Version : 7.6.7.1

Observation 6343 - L2 Version 002
Chandra X-Ray Center

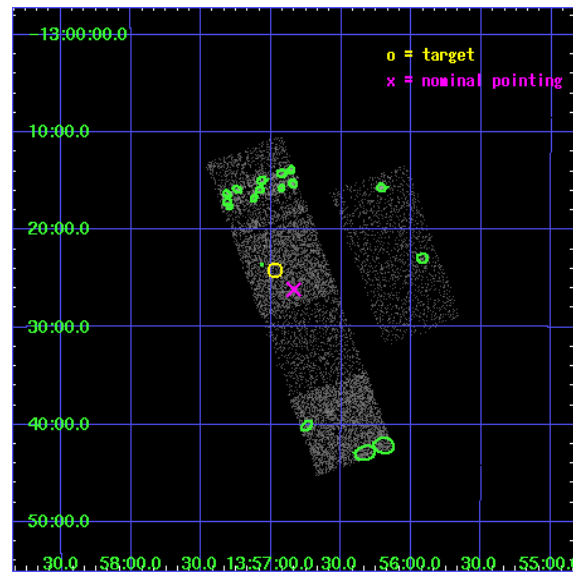
L2 Processing Date : Mar 14 2006

Contents

1	Front	2
2	OBI	3
2.1	OBI	3
2.1.1	Images	3
2.1.2	Bias	3
2.1.3	Parameters	4
2.1.4	Events	4
2.2	Compared Parameters	5
2.3	Aspect	6
2.4	Star Slots	9
2.4.1	Slot 3	9
2.4.2	Slot 4	10
2.4.3	Slot 5	11
2.4.4	Slot 6	12
2.4.5	Slot 7	13
2.5	FID Slots	14
2.5.1	Slot 0	14
2.5.2	Slot 1	15
2.5.3	Slot 2	16
3	Point Sources	17
A	Summary	18
A.1	Status	18
A.2	Comments	18

1 Front

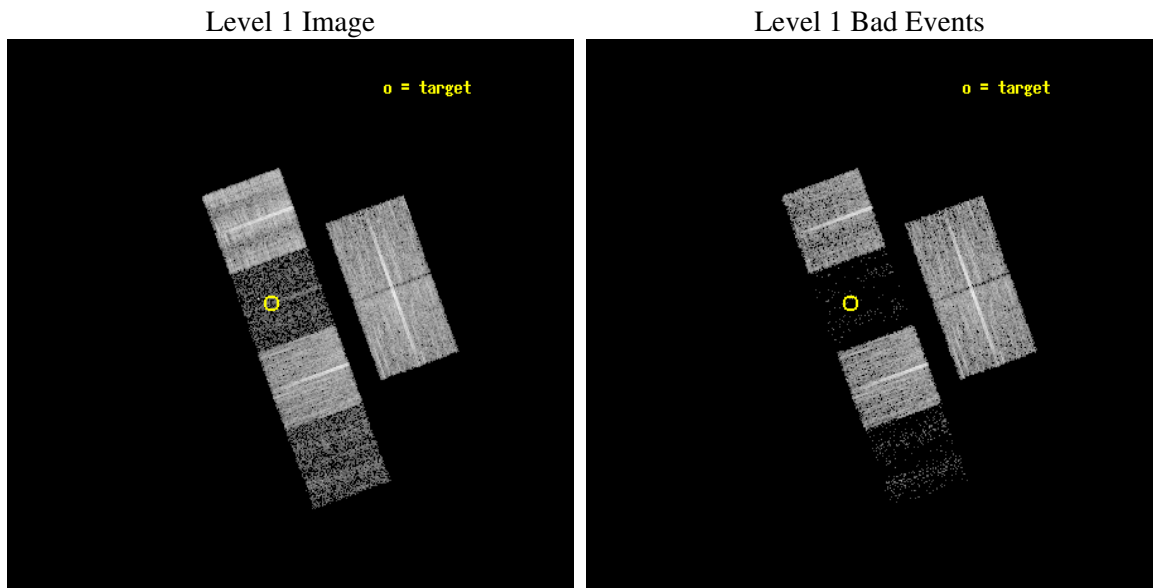
seq_num	100057
obs_id	6343
title	Comet 9P/Tempel 1 During the Deep Impact Encounter
observer	Dr. Carey Lisse
object	9P/Tempel 1
dtcycle	0
cycle	P
ra_targ	209.242193
dec_targ	-13.402081
ra_nom	209.2094465302
dec_nom	-13.436000750298
roll_nom	250.1166751572
revision	2
ontime	8502.3999683261
livetime	8394.7374603965
ontime2	8502.3999683261
ontime3	8502.3999683261
ontime5	8502.3999683261
ontime6	8499.1589980423
ontime7	8502.3999683261
ontime8	8502.3999683261
l2events	13529



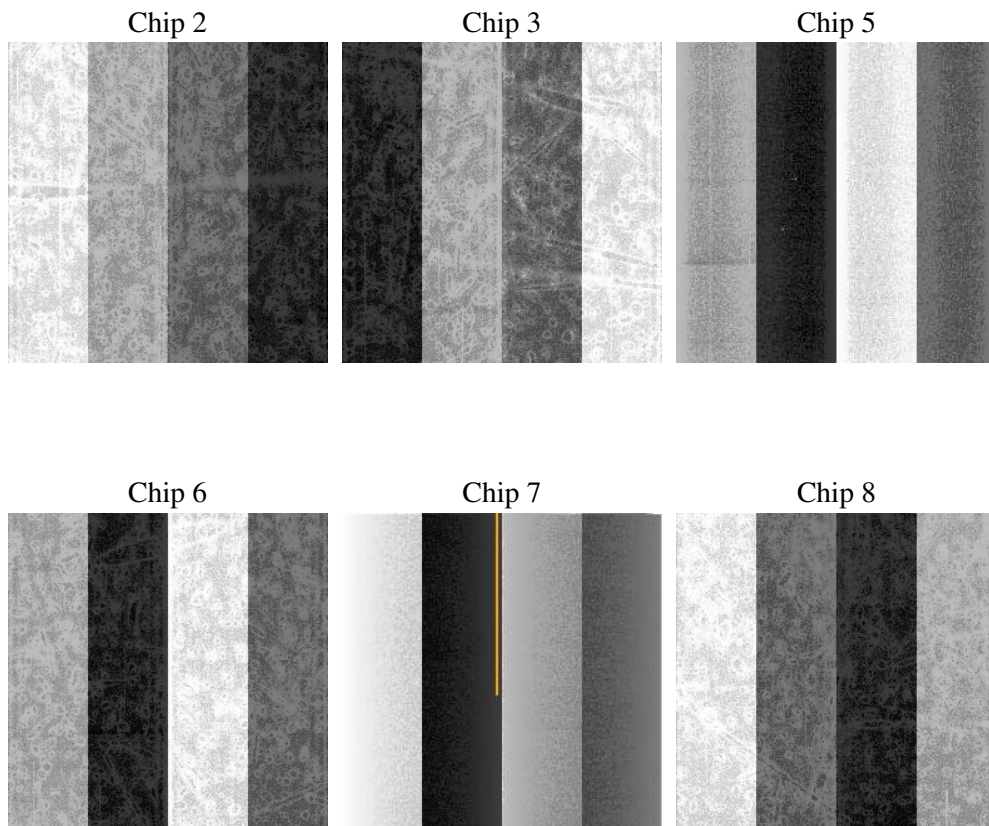
2 OBI

2.1 OBI

2.1.1 Images



2.1.2 Bias



2.1.3 Parameters

obi_num	1
ascdsver	7.6.7.1
caldsver	3.2.1
date	2006-03-14T16:34:11
revision	2

sched_exp_time	8325.000000
ontime	8702.0928781033
ontime2	8702.092898041
ontime3	8702.092898041
ontime5	8702.0928781033
ontime6	8698.8519078195
ontime7	8702.0928781033
ontime8	8702.0928781033
l1events	175762

2.1.4 Events

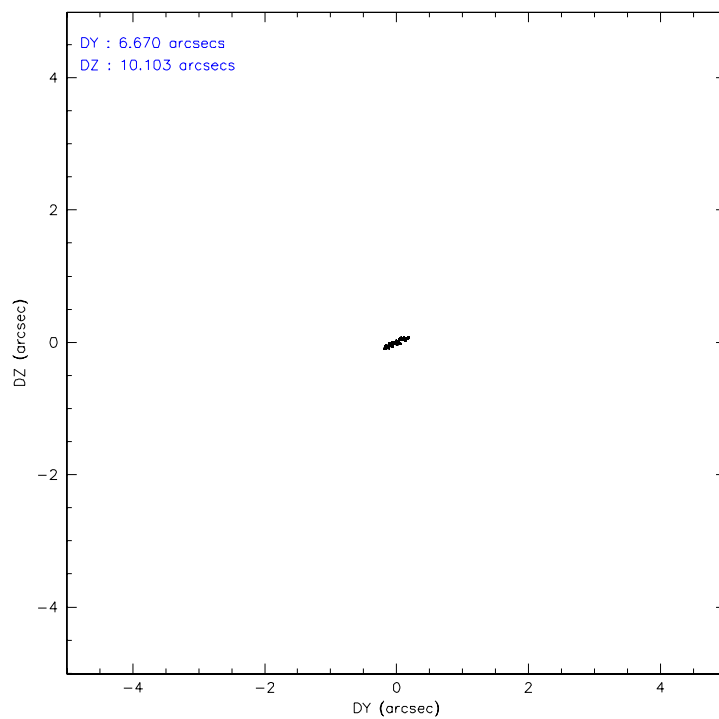
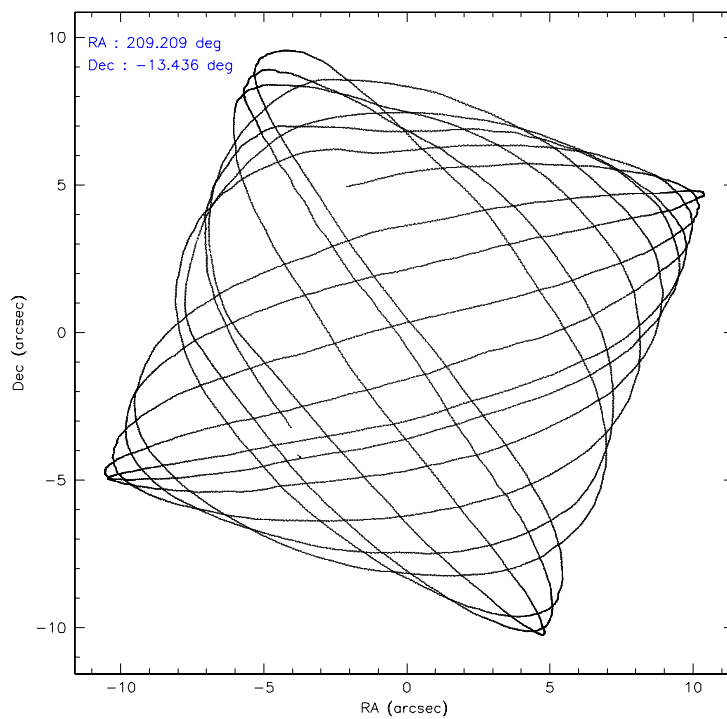
	ccd 2	ccd 3	ccd 5	ccd 6	ccd 7	ccd 8
level 1 events	42189	36998	6373	36761	4966	48475
rejected events	40139	35742	2148	34976	1066	31588
rejected %	95%	96%	33%	95%	21%	65%

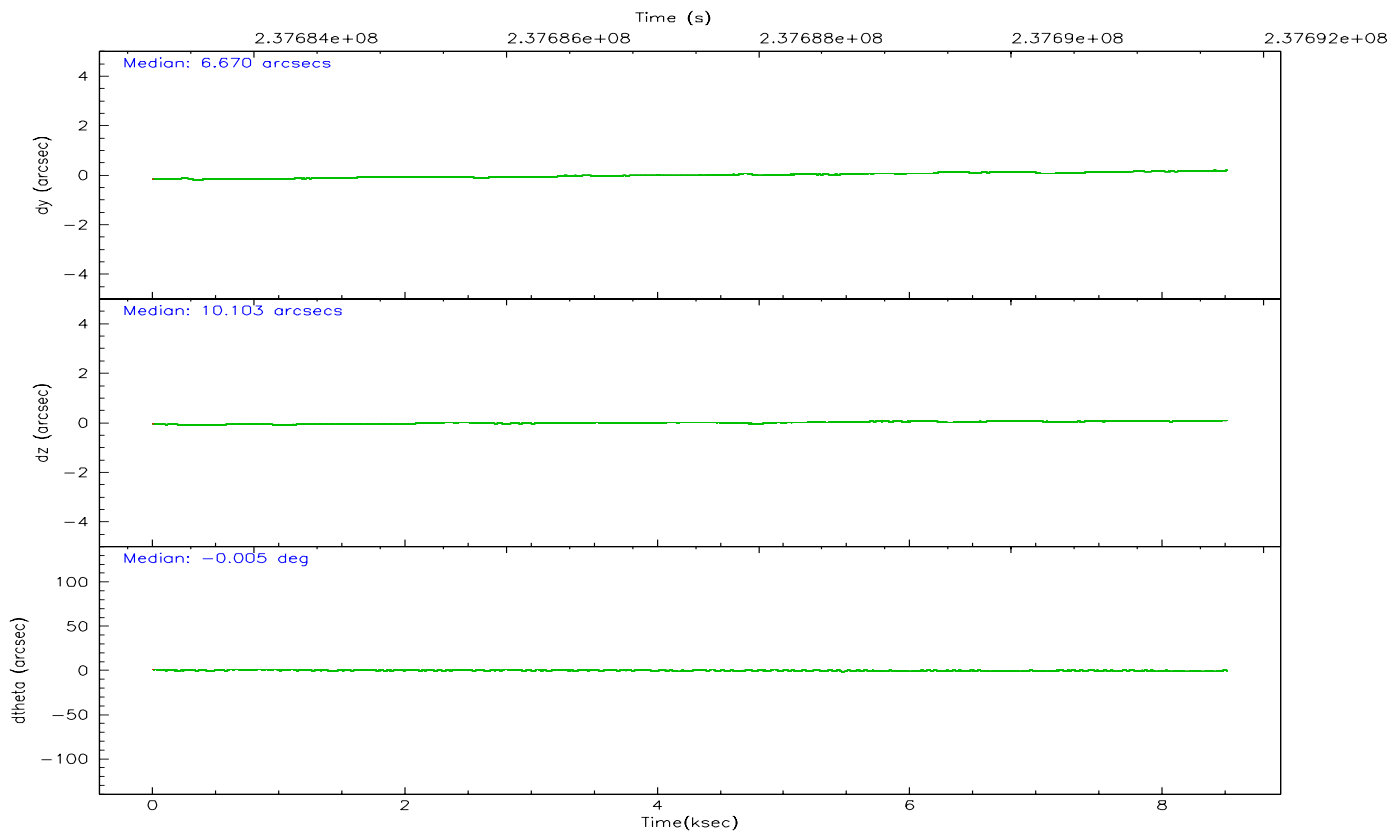
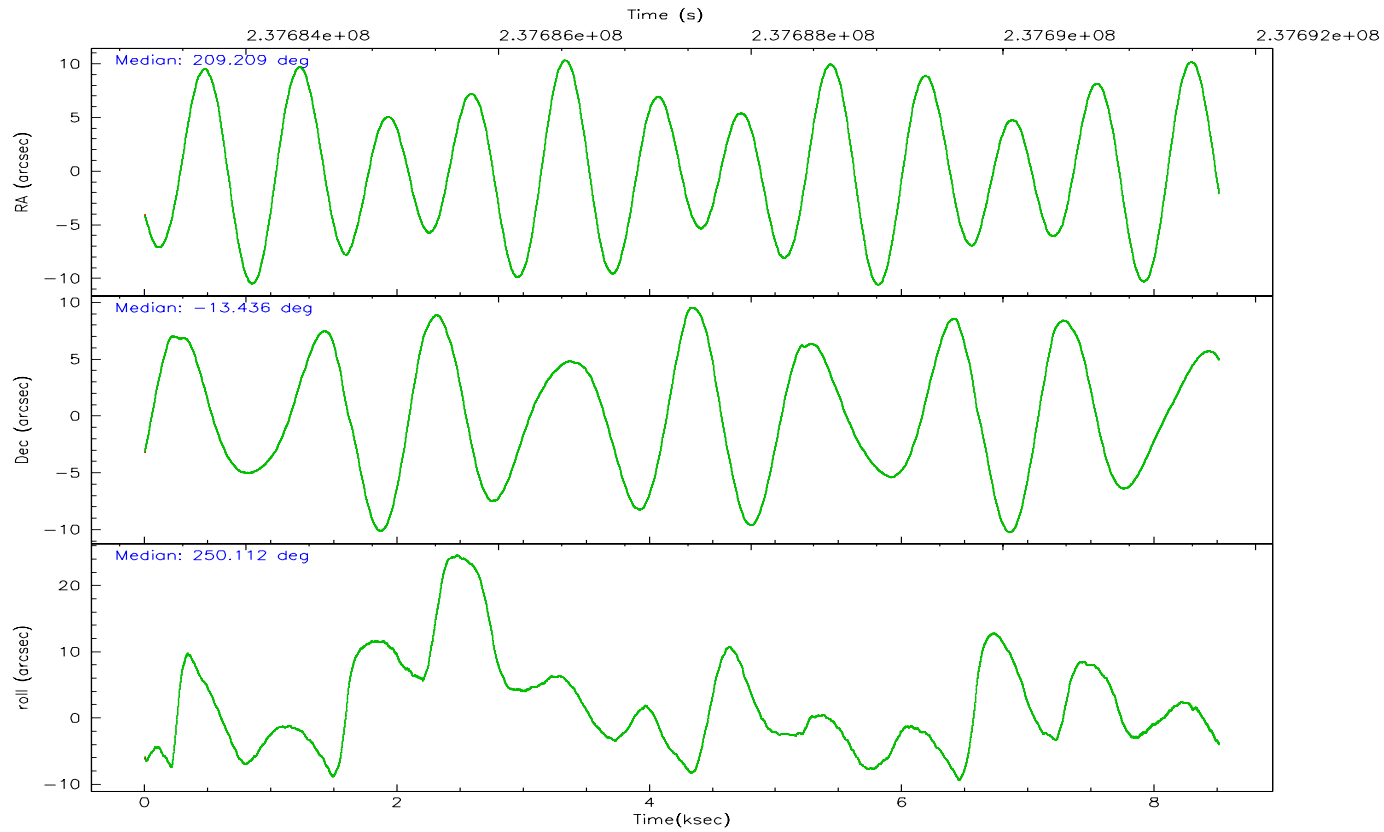
	ccd 2	ccd 3	ccd 5	ccd 6	ccd 7	ccd 8
grade 0 events	842	636	908	800	949	4680
	1%	1%	14%	2%	19%	9%
grade 1 events	16	15	20	9	11	31
	0%	0%	0%	0%	0%	0%
grade 2 events	591	159	1826	435	1341	3554
	1%	0%	28%	1%	27%	7%
grade 3 events	198	223	509	231	612	2342
	0%	0%	7%	0%	12%	4%
grade 4 events	265	173	506	250	574	2099
	0%	0%	7%	0%	11%	4%
grade 5 events	43	48	327	24	130	319
	0%	0%	5%	0%	2%	0%
grade 6 events	202	104	567	99	521	4518
	0%	0%	8%	0%	10%	9%
grade 7 events	40032	35640	1710	34913	828	30932
	94%	96%	26%	94%	16%	63%

2.2 Compared Parameters

Parameter	Planned	Actual	Parameter	Planned	Actual
Instrument	ACIS	ACIS	Obspar format version number	6	6
Detector	ACIS-235678	ACIS-235678	Obspar file type	PREDICTED	ACTUAL
Grating	NONE	NONE	Obspar update status	NONE	UPDATED
Data mode	VFAINT	VFAINT	On-chip summing requested	N	N
Observation mode	POINTING	POINTING	Subarray requested	NONE	NONE
Pointing RA	209.204116	209.2094465302049	Alternating exposures requested	N	N
Pointing Dec	-13.409335	-13.43600075029821	Primary exposure time	0.000000	3.2
Pointing Roll	249.958804	250.1166751571966			
Window start time	237708064.184000	237708064.184000			
Window stop time	237751264.184000	237751264.184000			
SIM focus pos (mm)	-0.684267	-0.6828225247311905			
SIM defocus (mm)	0	0.001444936568705701			
SIM translation stage pos (mm)	-190.132523	-190.1400660498719			
SIM translation stage offset (mm)	0	0.00754346686406393			
Observation start time	237683390.184000	237683013.76068			
Observation start date	2005-07-13T23:08:46	2005-07-13T23:03:33			
Observation end time	237691715.184000	237692695.39863			
Observation end date	2005-07-14T01:27:31	2005-07-14T01:44:55			
Read mode	TIMED	TIMED			

2.3 Aspect



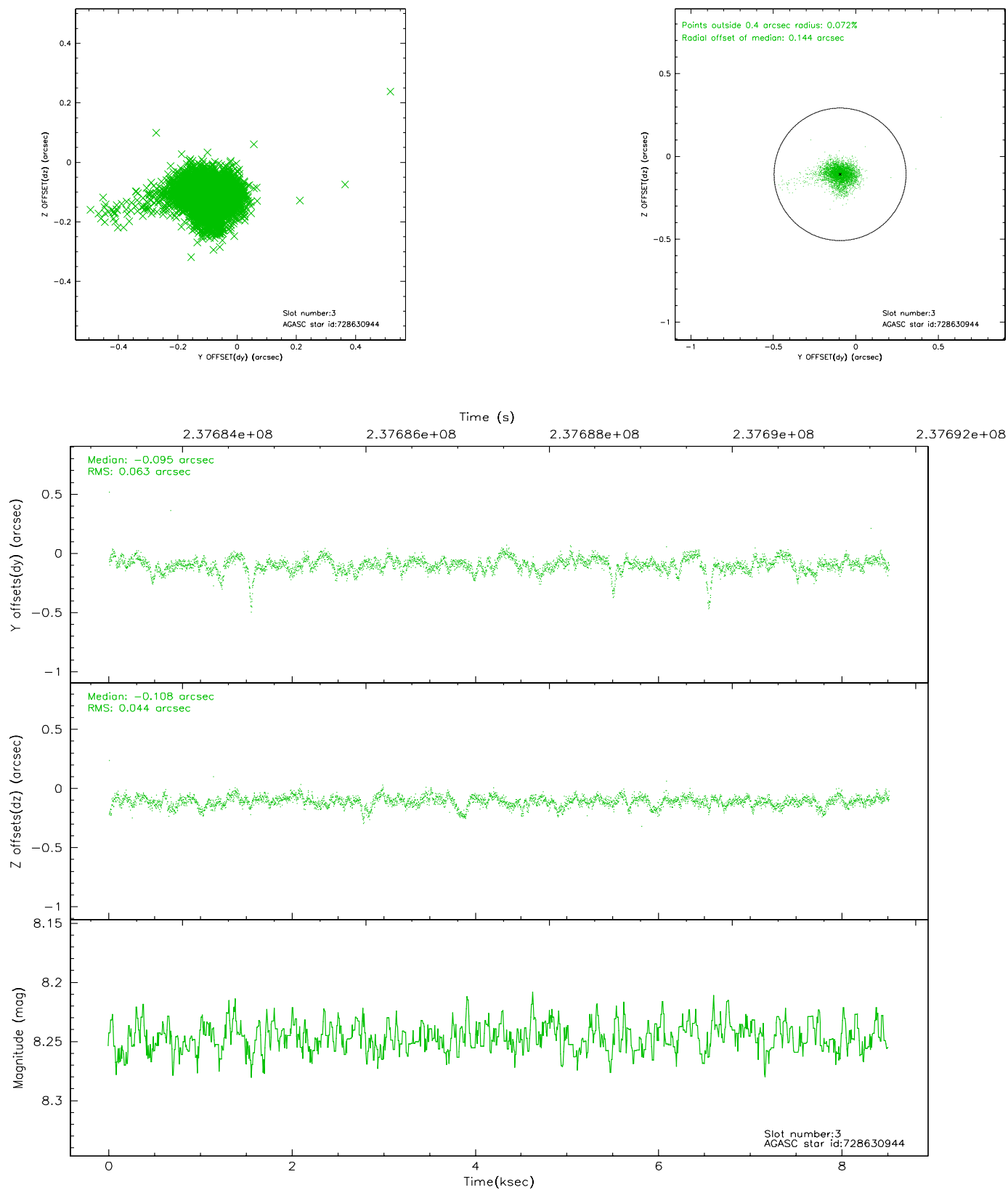


Slot Statistics

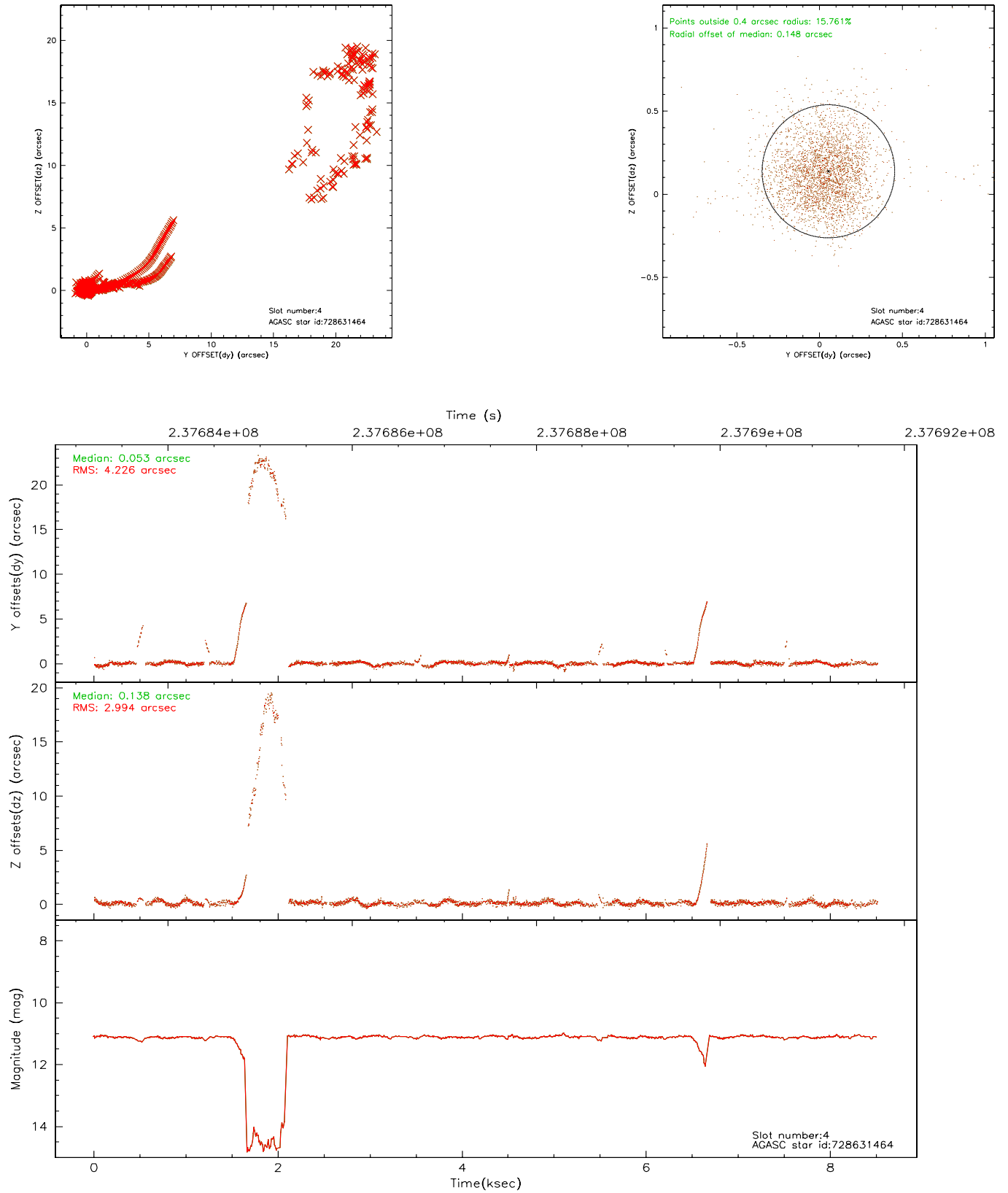
slot	status	id	mag	n_pts	med_dy	med_dz	dr1	dr2	ra	dec	mean_y	mean_z
0	FID	ACIS-S-2	7.10	2076	-0.054	-0.002	0.006	0.010	0.000000	0.000000	-759.43	-1731.37
1	FID	ACIS-S-4	7.21	2076	0.062	0.027	0.005	0.009	0.000000	0.000000	2153.63	176.52
2	FID	ACIS-S-5	7.23	2076	-0.040	-0.016	0.006	0.010	0.000000	0.000000	-1811.46	170.82
3	GUIDE	728630944	8.25	4152	-0.095	-0.108	0.075	0.128	208.923207	-13.740319	1457.01	-514.27
4	BAD	728631464	11.11	3458	0.053	0.138	0.289	6.001	208.876674	-12.686242	-2049.78	-1971.21
5	GUIDE	728639032	9.15	4149	0.075	-0.007	0.099	0.162	209.196450	-13.877558	1592.80	552.01
6	GUIDE	728765720	6.75	4152	-0.125	0.005	0.075	0.120	209.624356	-14.122063	1909.35	2258.34
7	GUIDE	728632824	10.09	4146	0.108	0.009	0.197	0.311	208.794061	-13.959609	2354.29	-665.80

2.4 Star Slots

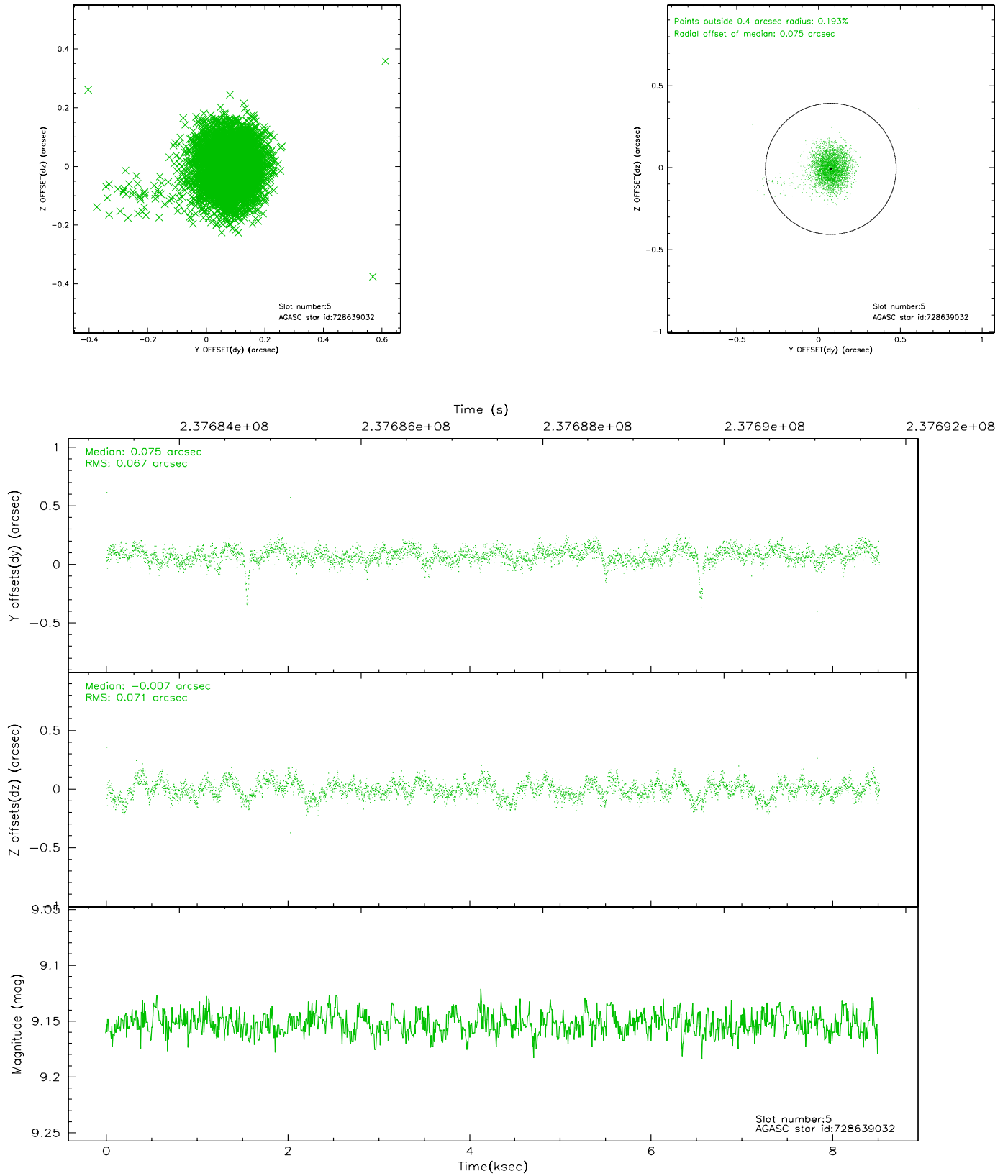
2.4.1 Slot 3



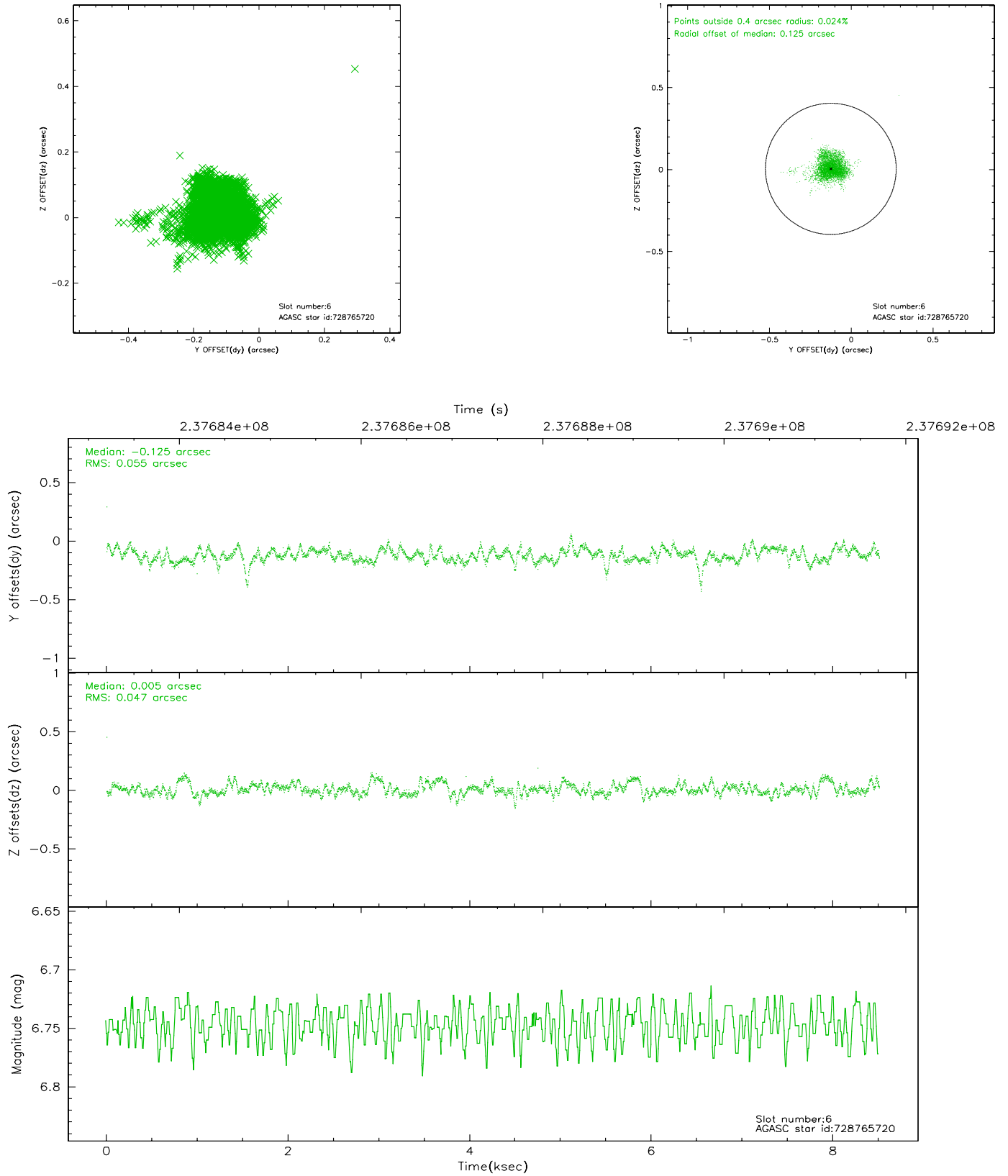
2.4.2 Slot 4



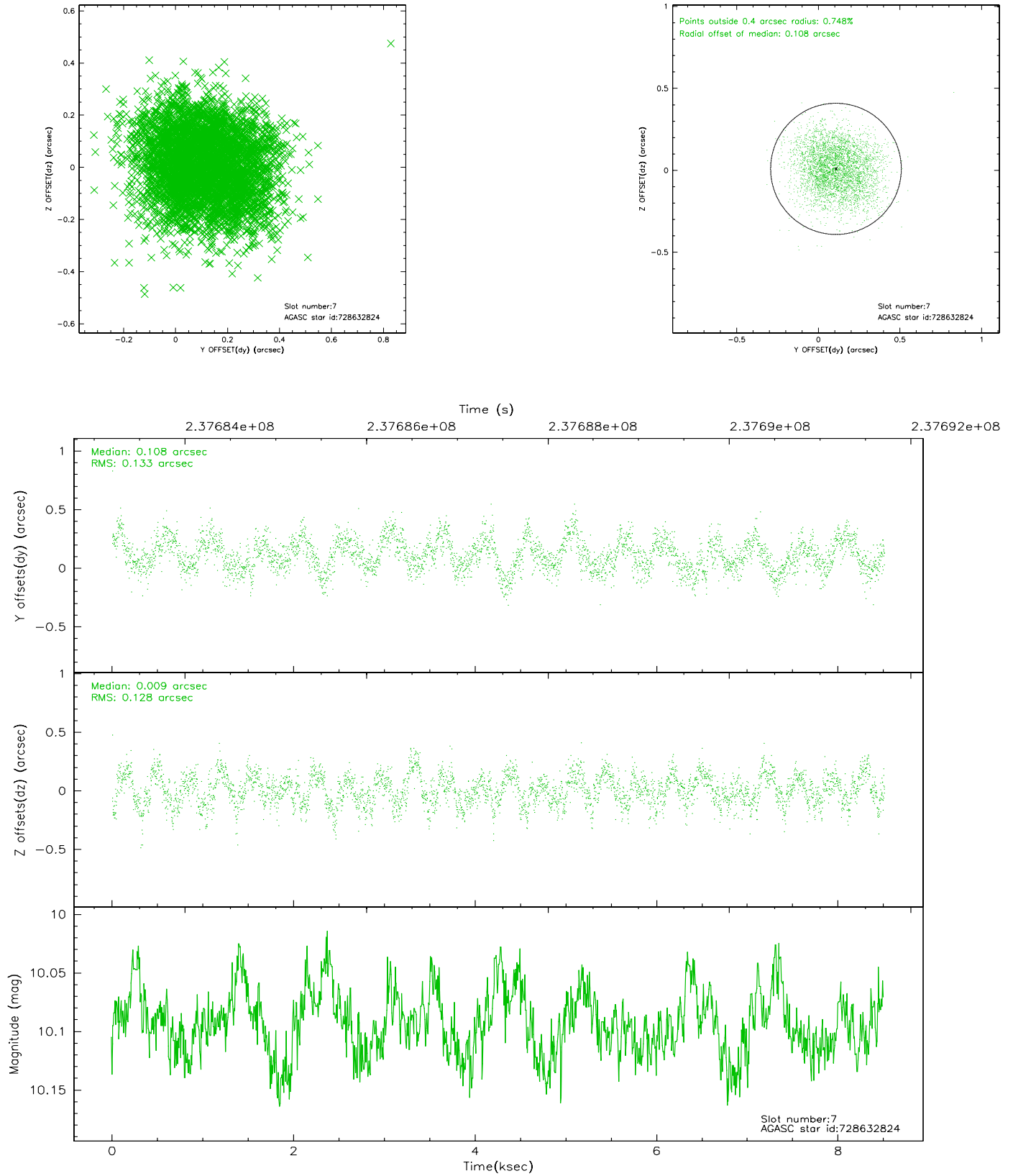
2.4.3 Slot 5



2.4.4 Slot 6

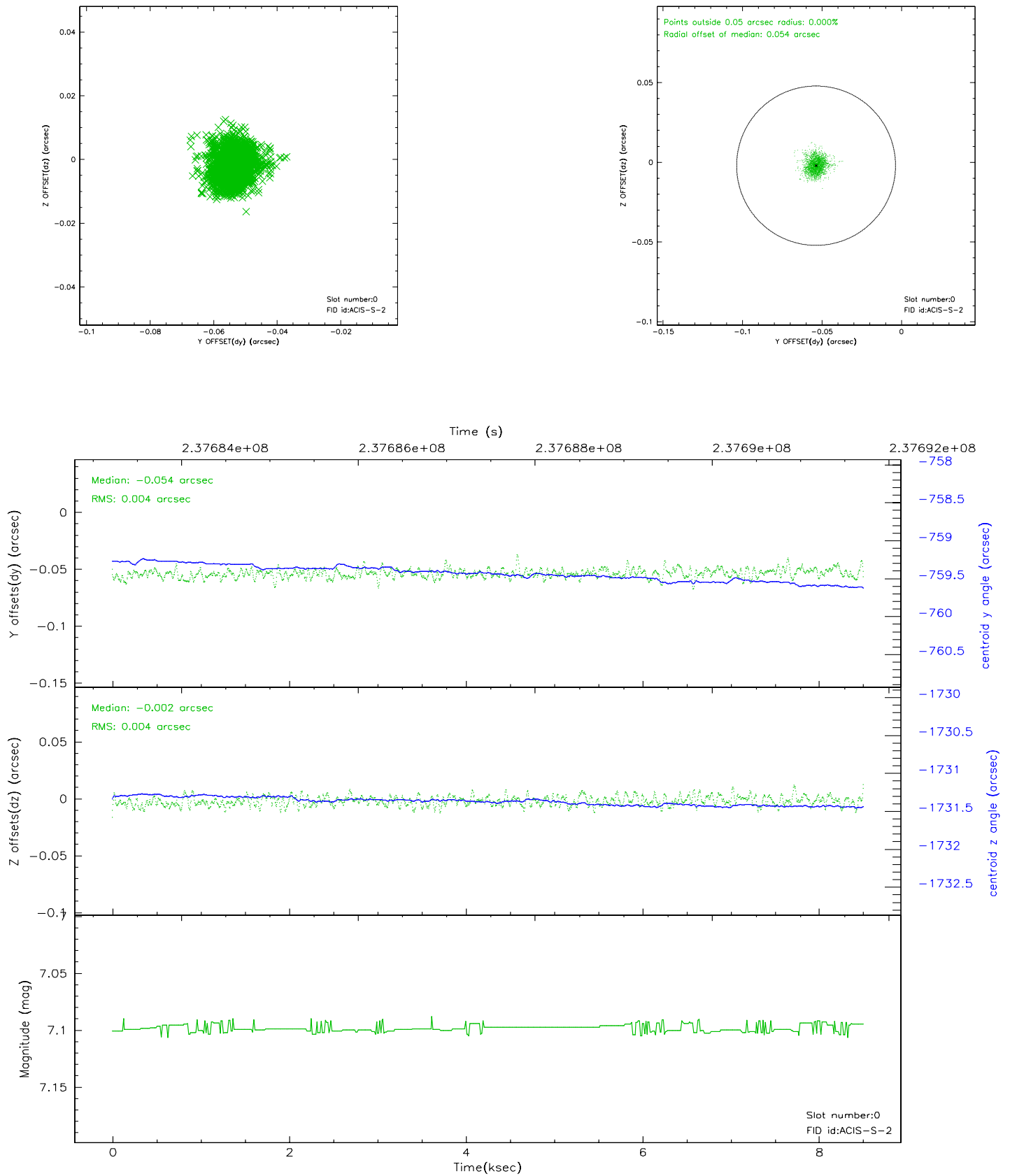


2.4.5 Slot 7

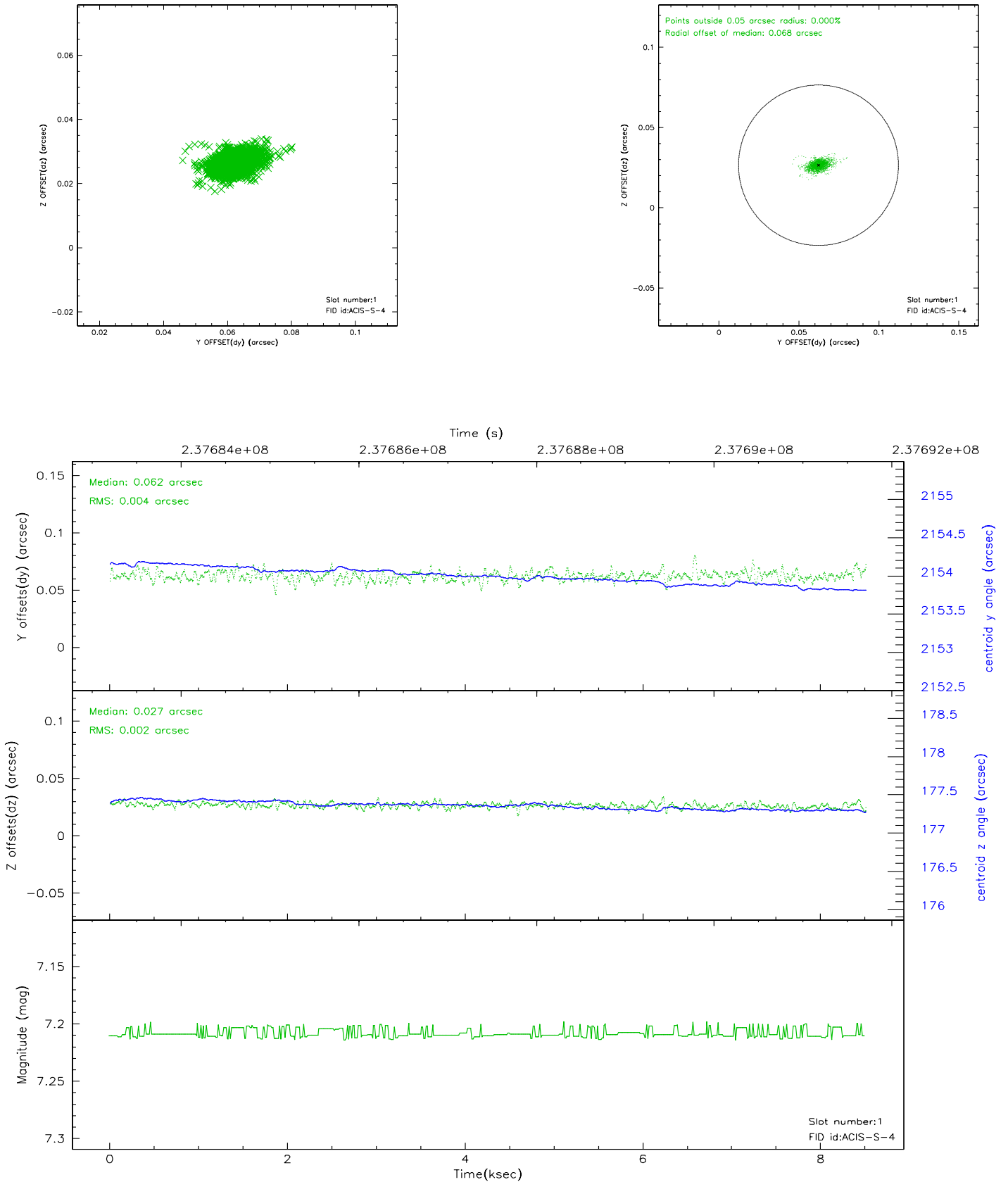


2.5 FID Slots

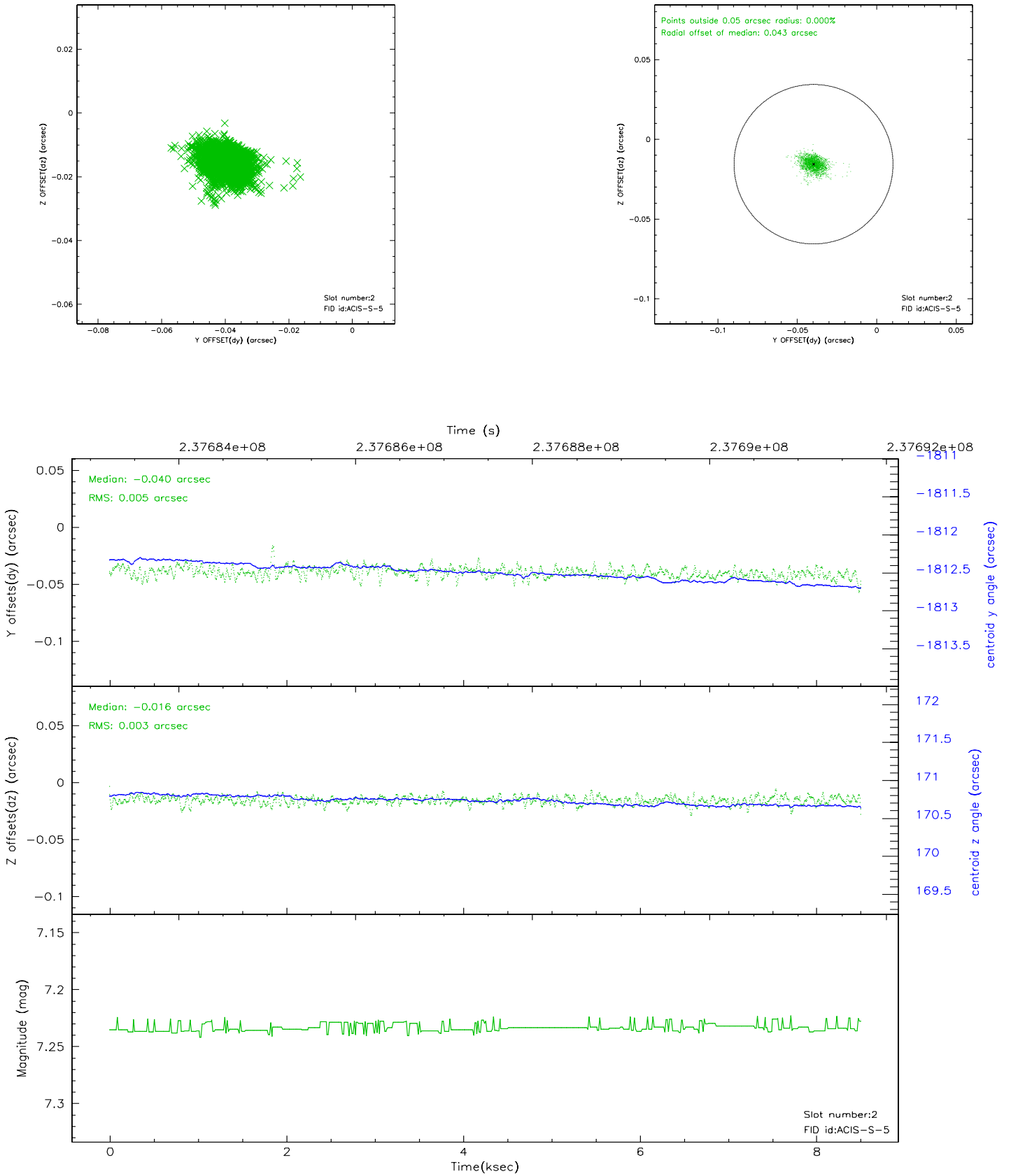
2.5.1 Slot 0



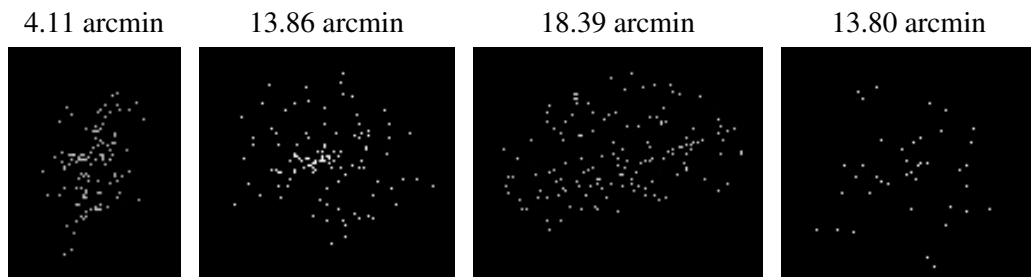
2.5.2 Slot 1



2.5.3 Slot 2



3 Point Sources



A Summary

A.1 Status

V&V Scientist	Beth Sundheim
V&V Date (YYYY-MM-DD)	2006.03.14
V&V Edition	1
V&V Disposition and Status	OK
V&V Charge Time	8.502399

A.2 Comments

Comments for Obi 1

Star in slot 4 has an RMS deviation > 0.300000 arcsec

Star in slot 4 has deviations > 0.050000 for more than 0.092250% of the observation

Slot 4 was not included in aspect solution.

Window constraint not satisfied.