

# V&V Reference Report

## L2 ASCDS Version : 8.5.1.1

Observation 6323 - L2 Version 3  
Chandra X-Ray Center

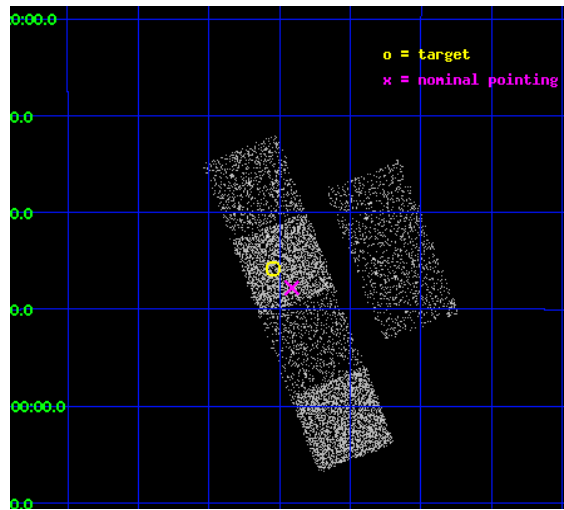
L2 Processing Date : Dec 25 2012

## Contents

<b>1</b>	<b>Front</b>	<b>2</b>
<b>2</b>	<b>OBI</b>	<b>3</b>
2.1	OBI . . . . .	3
2.1.1	Images . . . . .	3
2.1.2	Bias . . . . .	3
2.1.3	Parameters . . . . .	4
2.1.4	Events . . . . .	4
2.2	Compared Parameters . . . . .	5
2.3	Aspect . . . . .	6
2.4	Star Slots . . . . .	9
2.4.1	Slot 3 . . . . .	9
2.4.2	Slot 4 . . . . .	10
2.4.3	Slot 5 . . . . .	11
2.4.4	Slot 6 . . . . .	12
2.4.5	Slot 7 . . . . .	13
2.5	FID Slots . . . . .	14
2.5.1	Slot 0 . . . . .	14
2.5.2	Slot 1 . . . . .	15
2.5.3	Slot 2 . . . . .	16
<b>A</b>	<b>Summary</b>	<b>17</b>
A.1	Status . . . . .	17
A.2	Comments . . . . .	17

# 1 Front

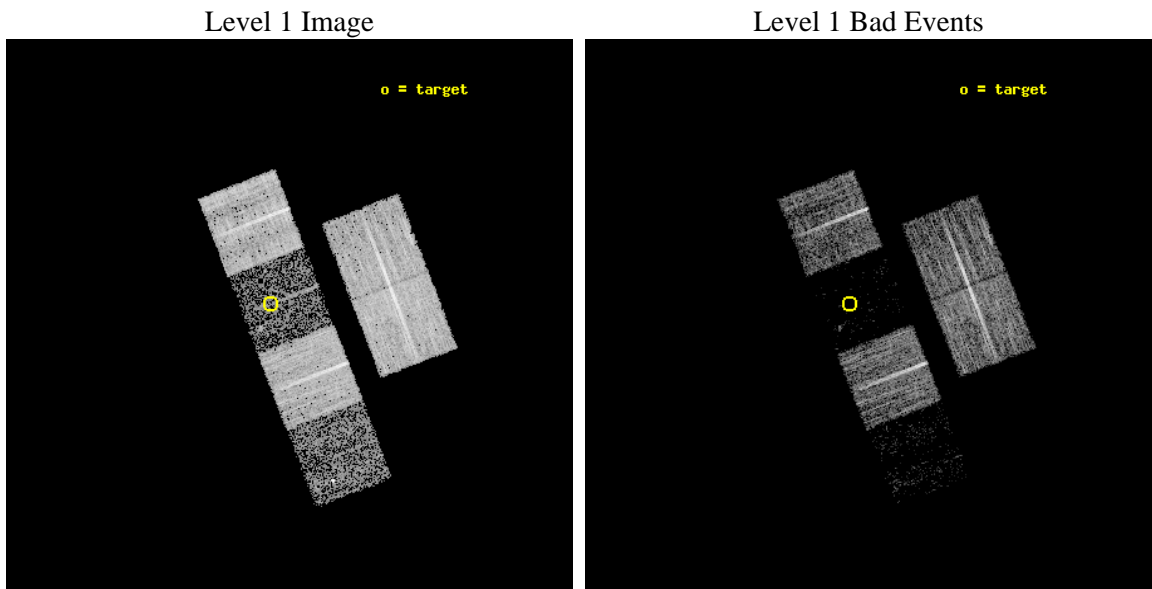
seq_num	100060	Sequence number
obs_id	6323	Observation id
title	Comet 9P/Tempel 1 During the Deep Impact Encounter	Proposal title
observer	Dr. Carey Lisse	Principal investigator
object	9P/Tempel 1	Source name
dtcycle	0	&#160
cycle	P	events from which exps? Prim/Second/Both
ra_targ	204.636428	Observer's specified target RA [deg]
dec_targ	-9.763153	Observer's specified target Dec [deg]
ra_nom	204.60333559031	Nominal RA [deg]
dec_nom	-9.7965037365298	Nominal Dec [deg]
roll_nom	248.87837270261	Nominal Roll [deg]
revision	3	Processing version of data
ontime	7187.1999732256	Sum of GTIs [s]
livetime	7096.1913195524	Livetime [s]
ontime2	7187.1999732256	Sum of GTIs [s]
ontime3	7187.1999732256	Sum of GTIs [s]
ontime5	7187.1999732256	Sum of GTIs [s]
ontime6	7187.1999732256	Sum of GTIs [s]
ontime7	7187.1999732256	Sum of GTIs [s]
ontime8	7187.1999732256	Sum of GTIs [s]
l2events	9929	Number of level 2 events



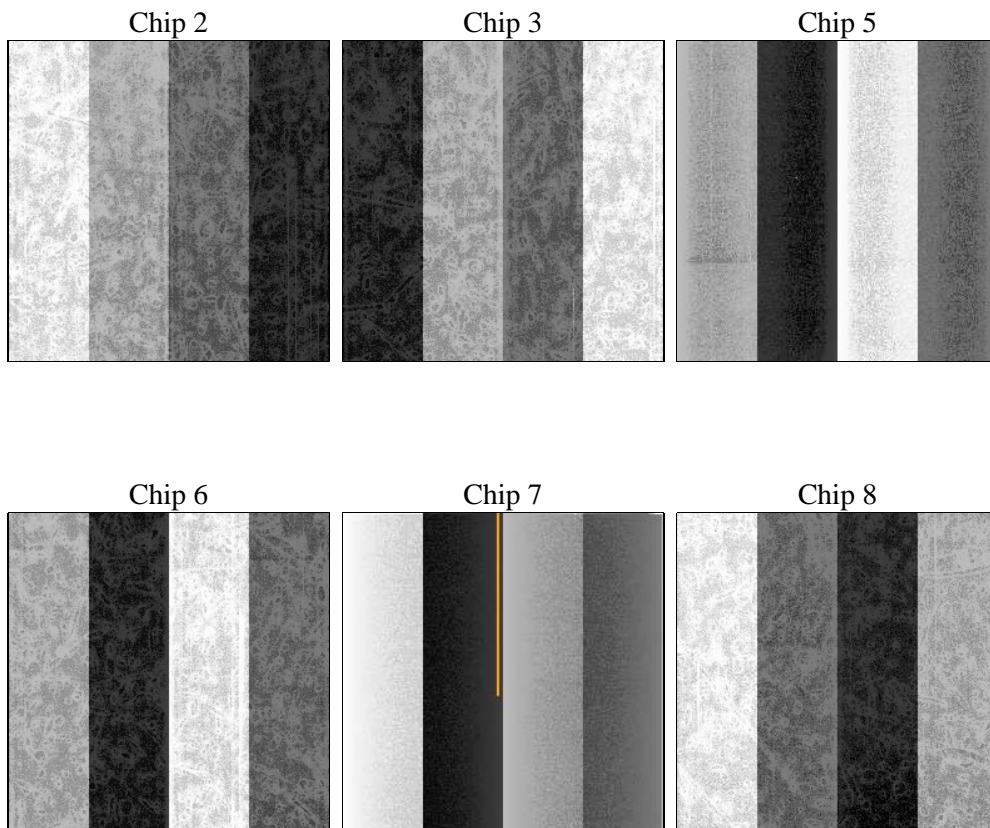
## 2 OBI

### 2.1 OBI

#### 2.1.1 Images



#### 2.1.2 Bias



### 2.1.3 Parameters

obi_num	0	Obi number	sched_exp_time	7000.000000	[s] Scheduled observation exposure time
ascdsver	8.5.1.1	Processing system revision	ontime	7187.1999732256	Sum of GTIs [s]
caldsver	4.5.5	&#160	ontime2	7187.1999732256	Sum of GTIs [s]
date	2012-12-25T21:21:34	Date and time of file creation	ontime3	7187.1999732256	Sum of GTIs [s]
revision	3	Processing version of data	ontime5	7187.1999732256	Sum of GTIs [s]
			ontime6	7187.1999732256	Sum of GTIs [s]
			ontime7	7187.1999732256	Sum of GTIs [s]
			ontime8	7187.1999732256	Sum of GTIs [s]
			l1events	153006	Number of level 1 events

### 2.1.4 Events

	ccd 2	ccd 3	ccd 5	ccd 6	ccd 7	ccd 8
level 1 events	38875	31867	6351	33947	4573	37393
rejected events	37304	30837	2205	32665	1013	28116
rejected %	95%	96%	34%	96%	22%	75%

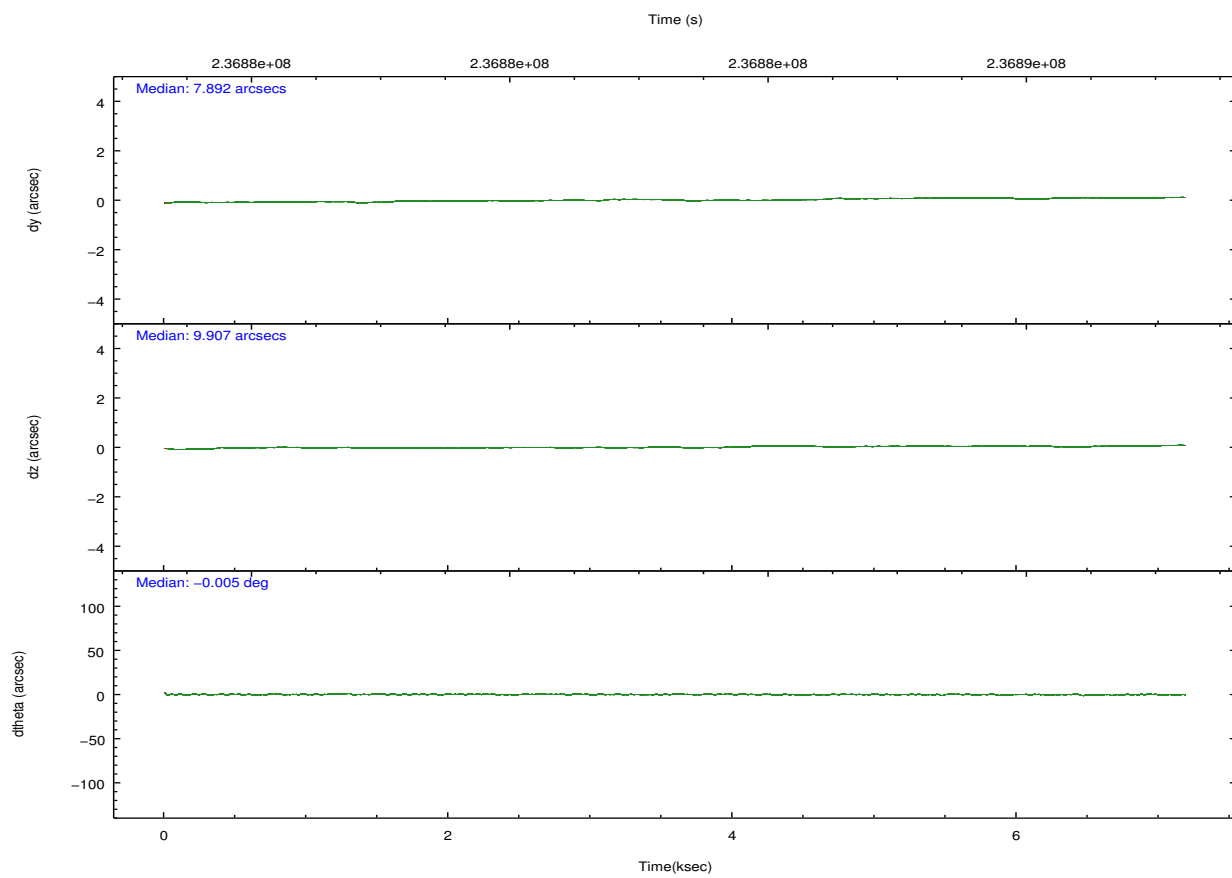
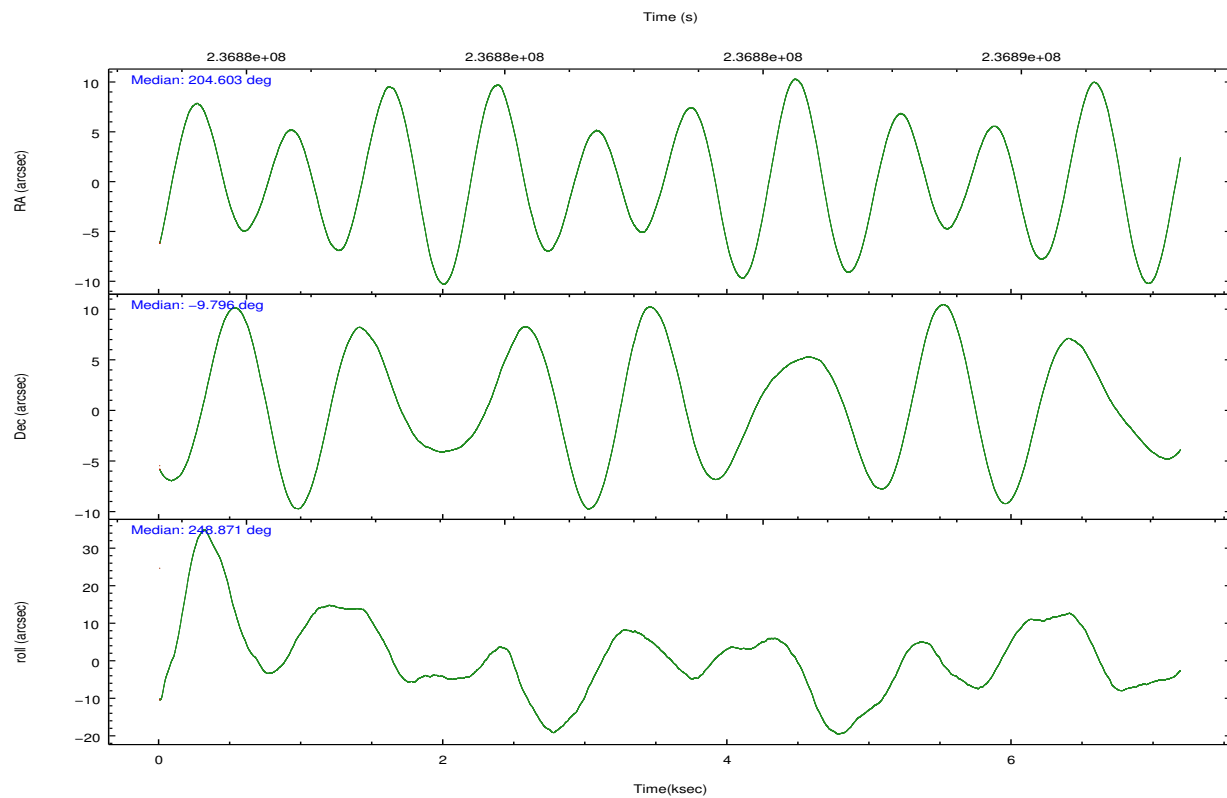
	ccd 2	ccd 3	ccd 5	ccd 6	ccd 7	ccd 8
grade 0 events	686	489	1422	594	997	2612
	1%	1%	22%	1%	21%	6%
grade 1 events	14	9	35	5	26	24
	0%	0%	0%	0%	0%	0%
grade 2 events	381	130	1537	259	1195	2176
	0%	0%	24%	0%	26%	5%
grade 3 events	205	185	469	200	534	1186
	0%	0%	7%	0%	11%	3%
grade 4 events	186	168	435	204	523	1061
	0%	0%	6%	0%	11%	2%
grade 5 events	50	31	342	29	126	212
	0%	0%	5%	0%	2%	0%
grade 6 events	175	108	465	92	458	2689
	0%	0%	7%	0%	10%	7%
grade 7 events	37178	30747	1646	32564	714	27433
	95%	96%	25%	95%	15%	73%



## 2.2 Compared Parameters

Parameter	Planned	Actual	Parameter	Planned	Actual
Instrument	ACIS	ACIS	Obspar format version number	7	7
Detector	ACIS-235678	ACIS-235678	Obspar file type	PREDICTED	ACTUAL
Grating	NONE	NONE	Obspar update status	NONE	UPDATED
Data mode	VFAINT	VFAINT	Number of optional ACIS chips dropped	0	0
Observation mode	POINTING	POINTING	On-chip summing requested	N	N
[deg] Pointing RA	204.598701	204.6033355903063	Subarray requested	NONE	NONE
[deg] Pointing Dec	-9.769601	-9.796503736529818	Alternating exposures requested	N	N
[deg] Pointing Roll	248.720967	248.878372702606	[s] Primary exposure time	0.000000	3.2
[mm] SIM focus pos	-0.684267	-0.6828225247311905			
[mm] SIM defocus	0	0.001444936568705701			
[mm] SIM translation stage pos	-190.132523	-190.145094680475			
[mm] SIM translation stage offset	0	0.01257209746719923			
[s] Observation start time (MET)	236879873.184000	236879497.26142			
Observation start date	2005-07-04T15:56:49	2005-07-04T15:51:37			
[s] Observation end time (MET)	236886873.184000	236887006.92427			
Observation end date	2005-07-04T17:53:29	2005-07-04T17:56:46			
Read mode	TIMED	TIMED			

## 2.3 Aspect

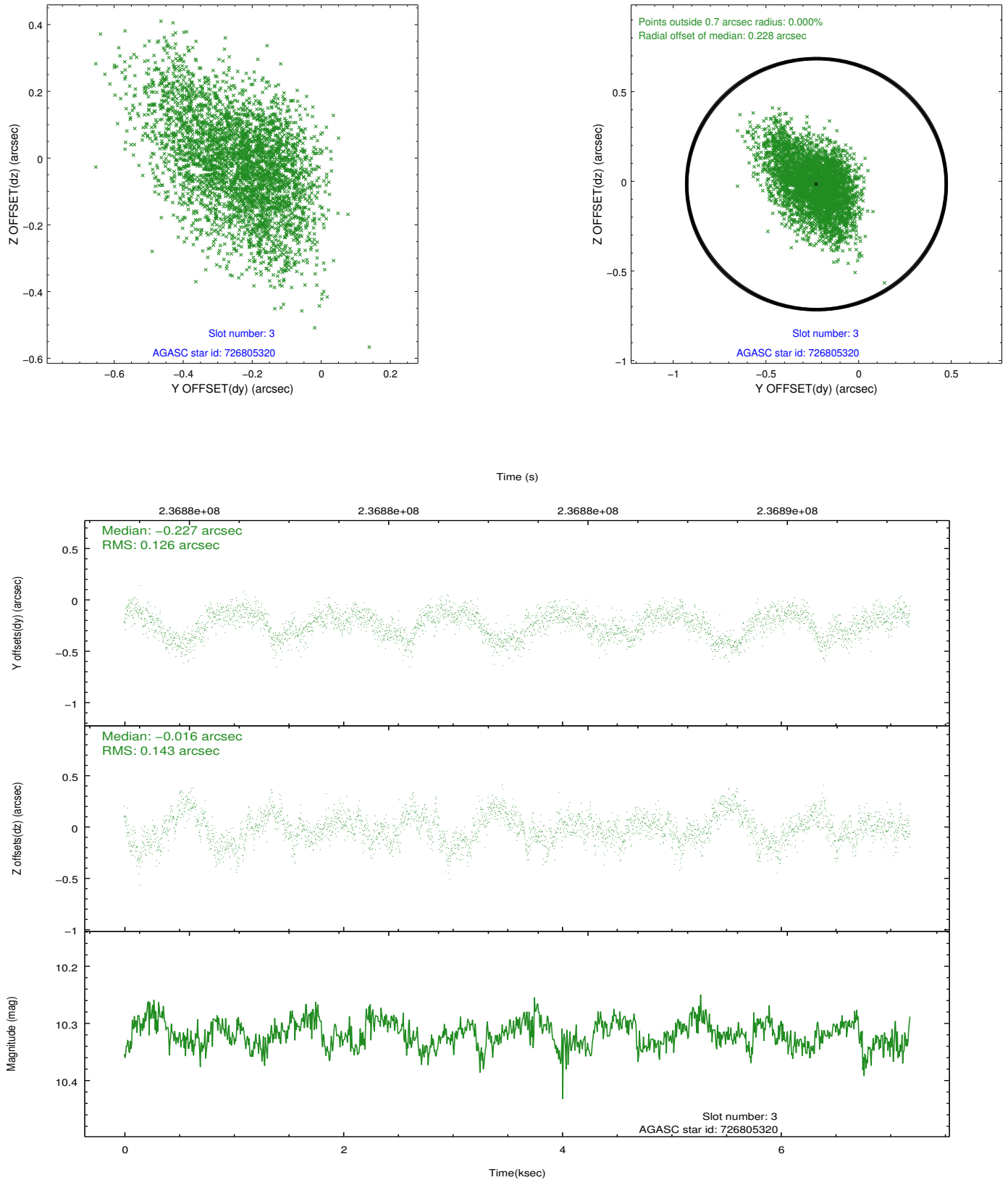


### Slot Statistics

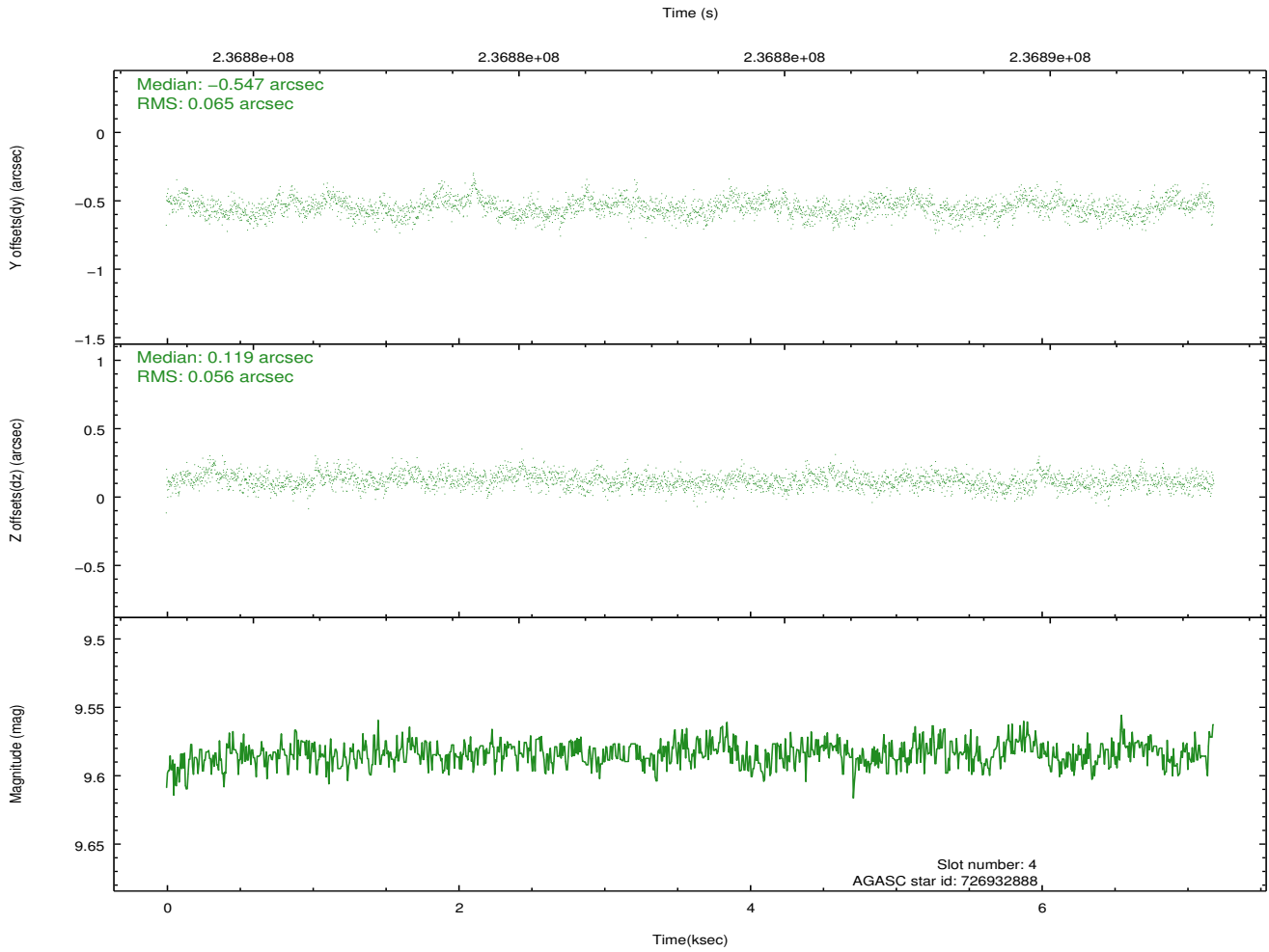
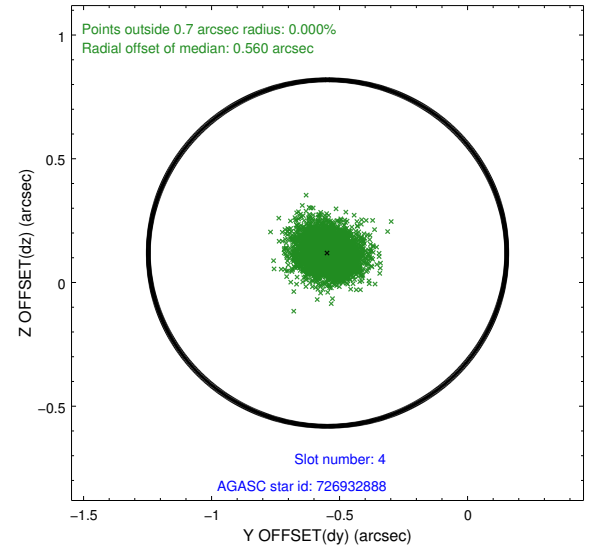
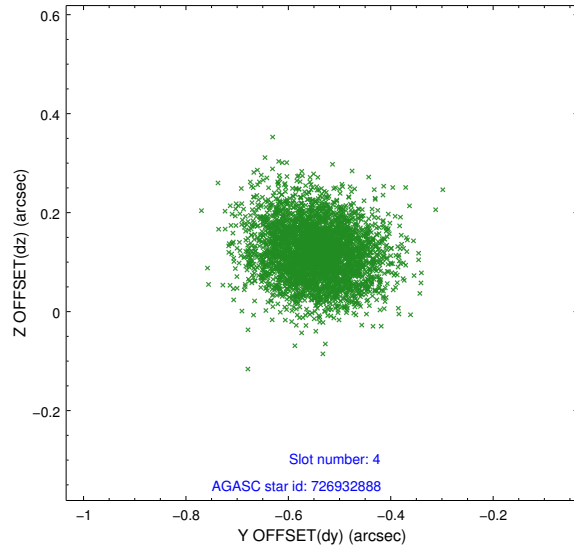
slot	status	id	mag	n_pts	med_dy	med_dz	dr1	dr2	ra	dec	mean_y	mean_z
0	FID	ACIS-S-2	7.10	1753	-0.041	-0.029	0.007	0.011	0.000000	0.000000	-760.68	-1731.10
1	FID	ACIS-S-4	7.21	1753	0.111	0.027	0.006	0.012	0.000000	0.000000	2152.35	176.67
2	FID	ACIS-S-5	7.23	1753	-0.102	0.011	0.007	0.012	0.000000	0.000000	-1812.59	171.15
3	GUIDE	726805320	10.32	3500	-0.227	-0.016	0.200	0.339	204.212849	-9.734967	381.38	-1320.63
4	GUIDE	726932888	9.58	3506	-0.547	0.119	0.090	0.149	204.640397	-9.165404	-2080.78	-651.73
5	GUIDE	726935840	9.52	3504	0.680	-0.517	0.092	0.153	205.084608	-9.297514	-2209.00	991.51
6	GUIDE	727320712	10.43	3428	0.141	0.065	0.220	0.370	204.468965	-10.254166	1792.15	205.68
7	GUIDE	727321032	9.99	3494	-0.051	0.354	0.160	0.261	205.073686	-10.196206	821.84	2126.59

## 2.4 Star Slots

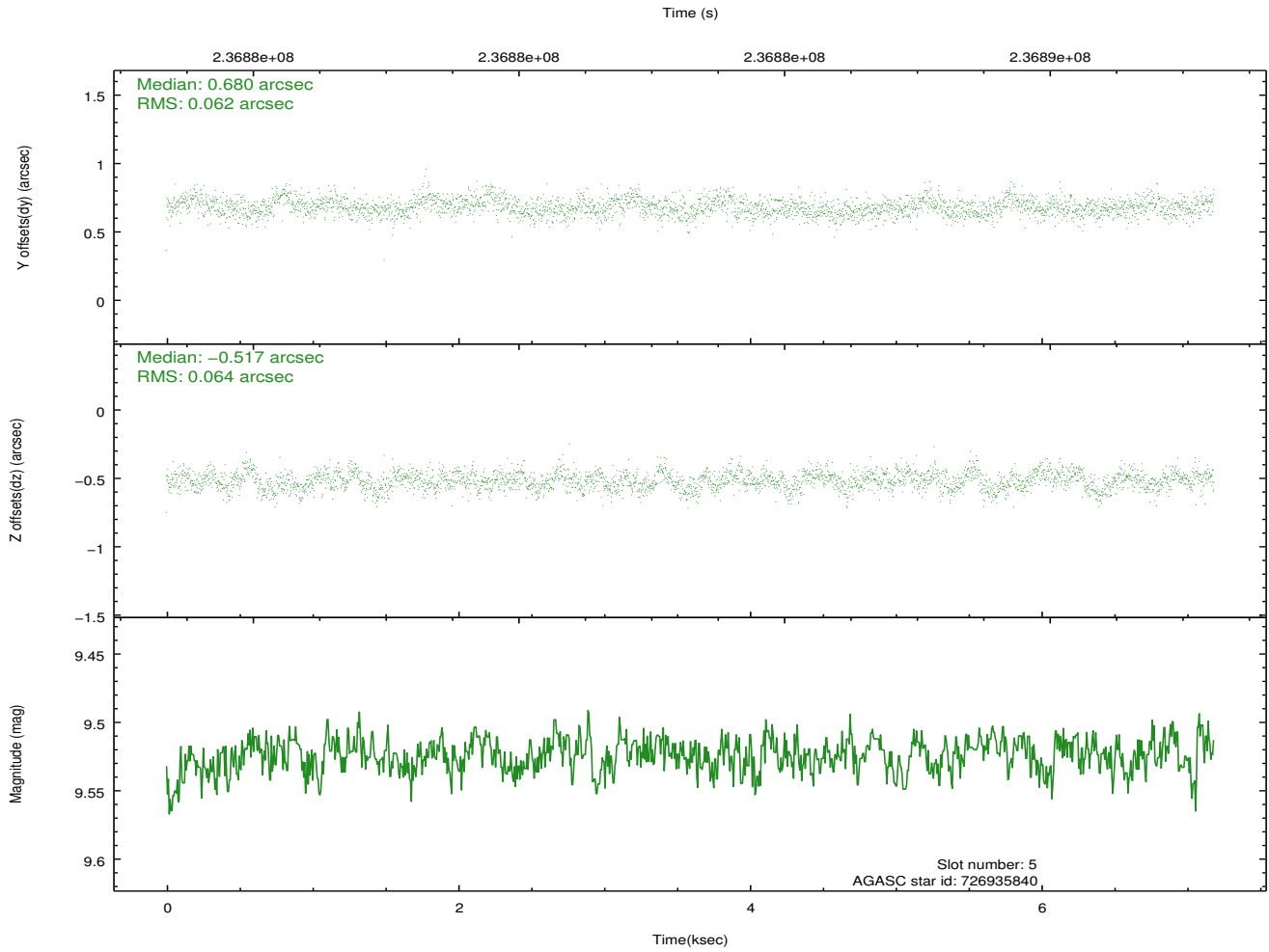
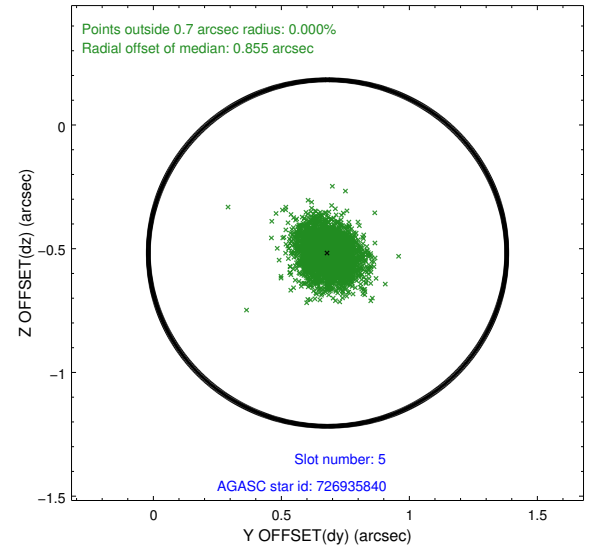
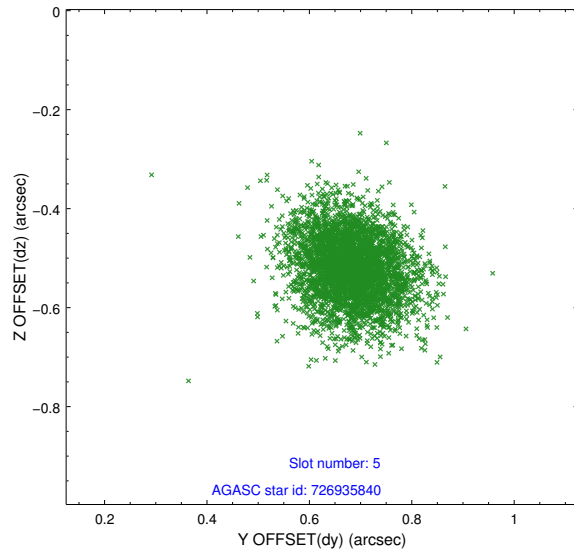
### 2.4.1 Slot 3



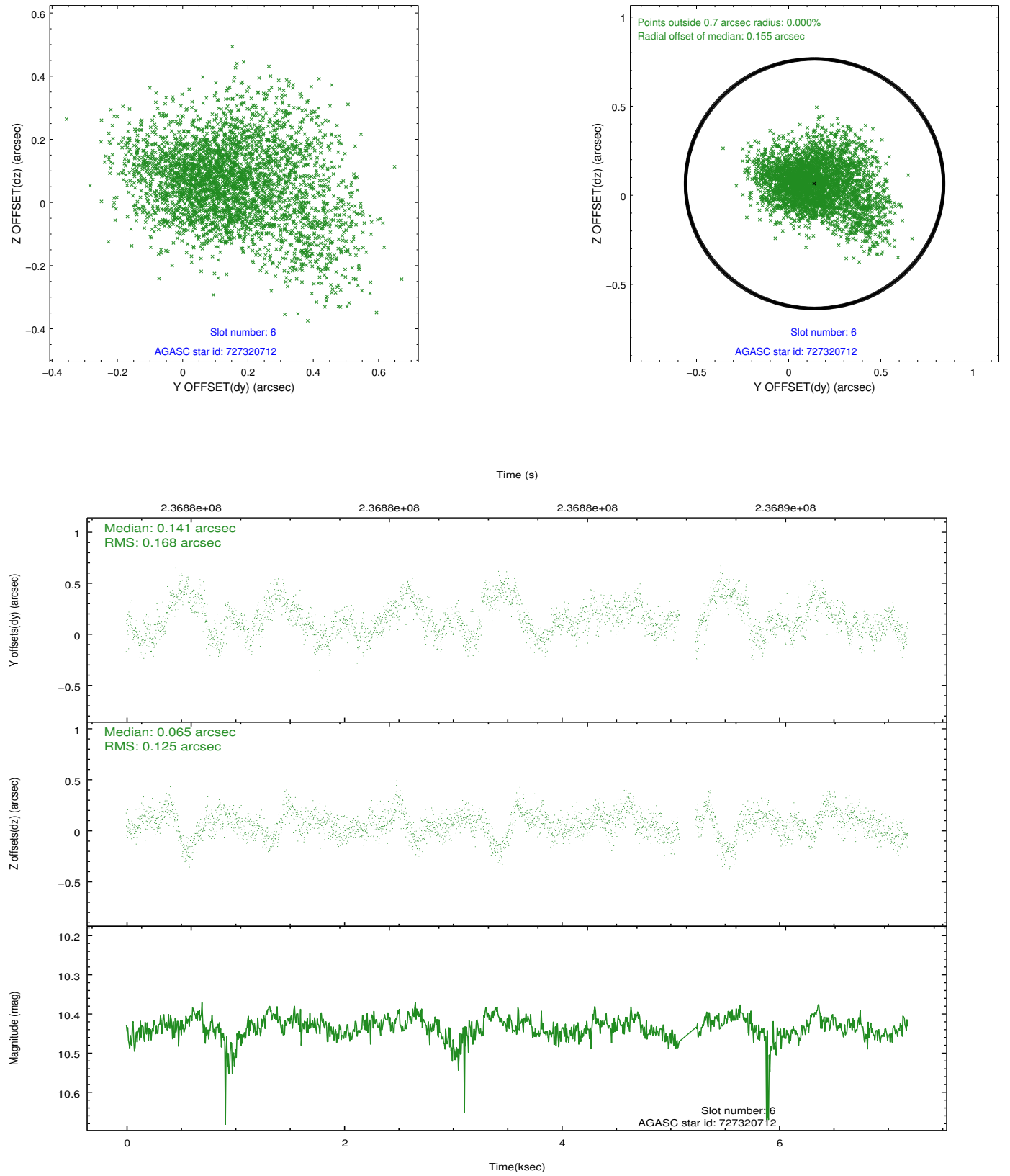
## 2.4.2 Slot 4



### 2.4.3 Slot 5

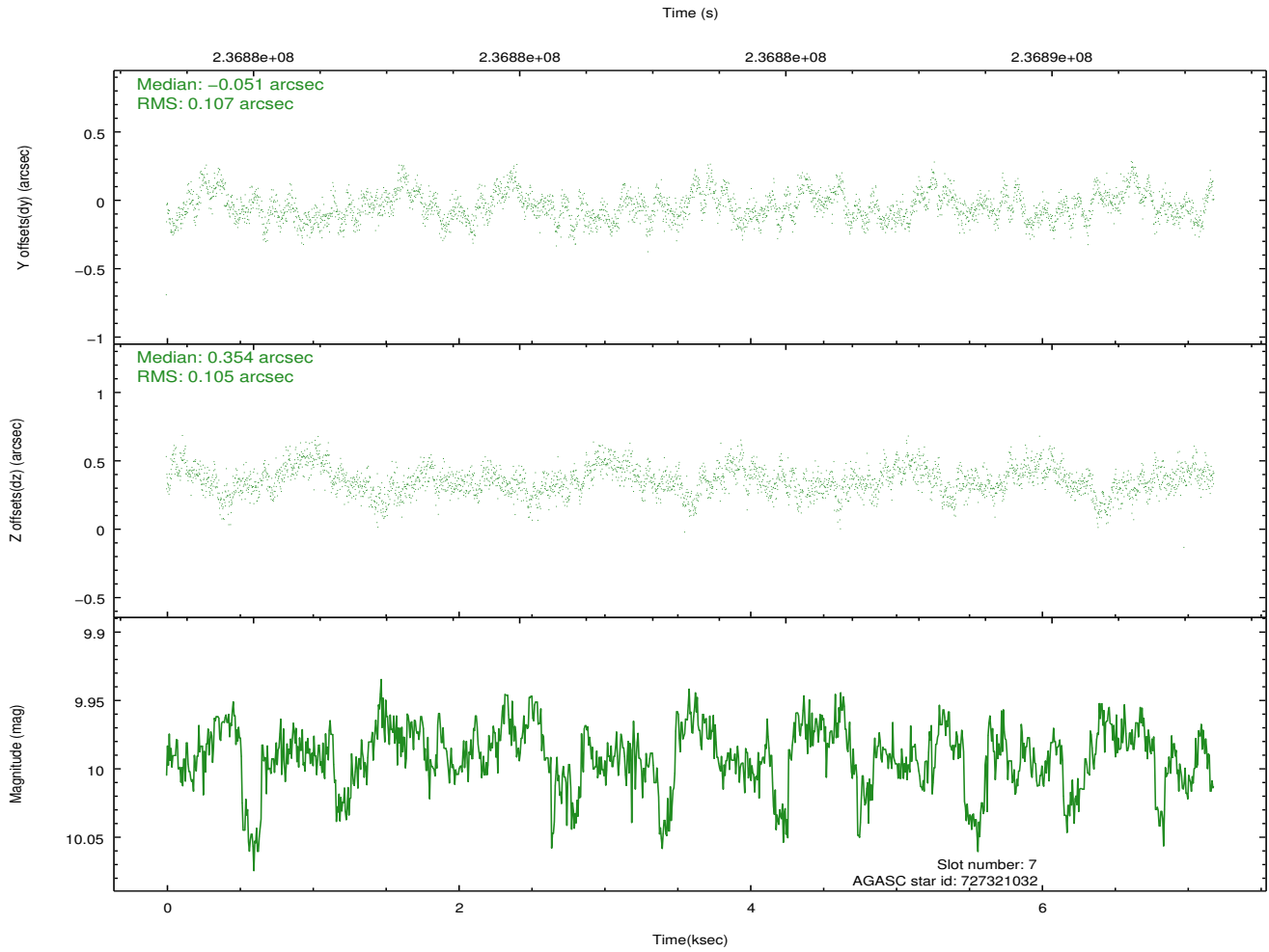
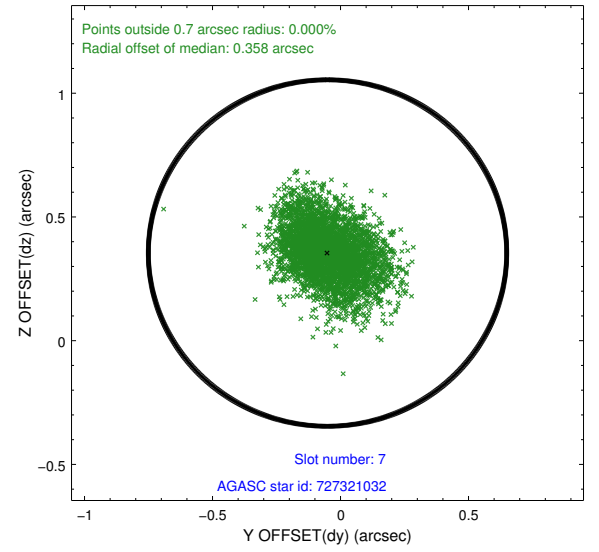
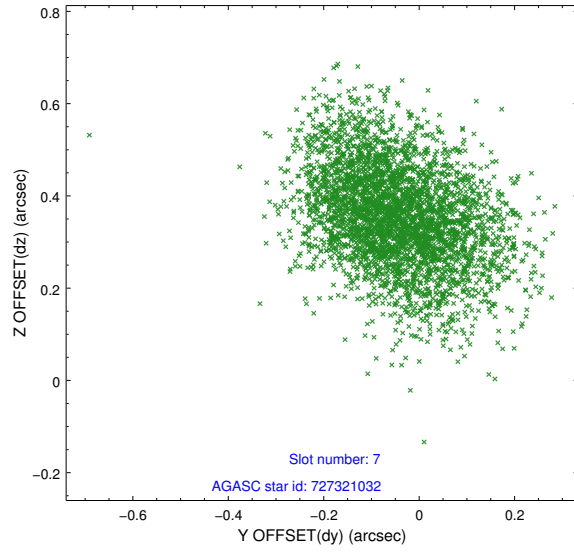


## 2.4.4 Slot 6



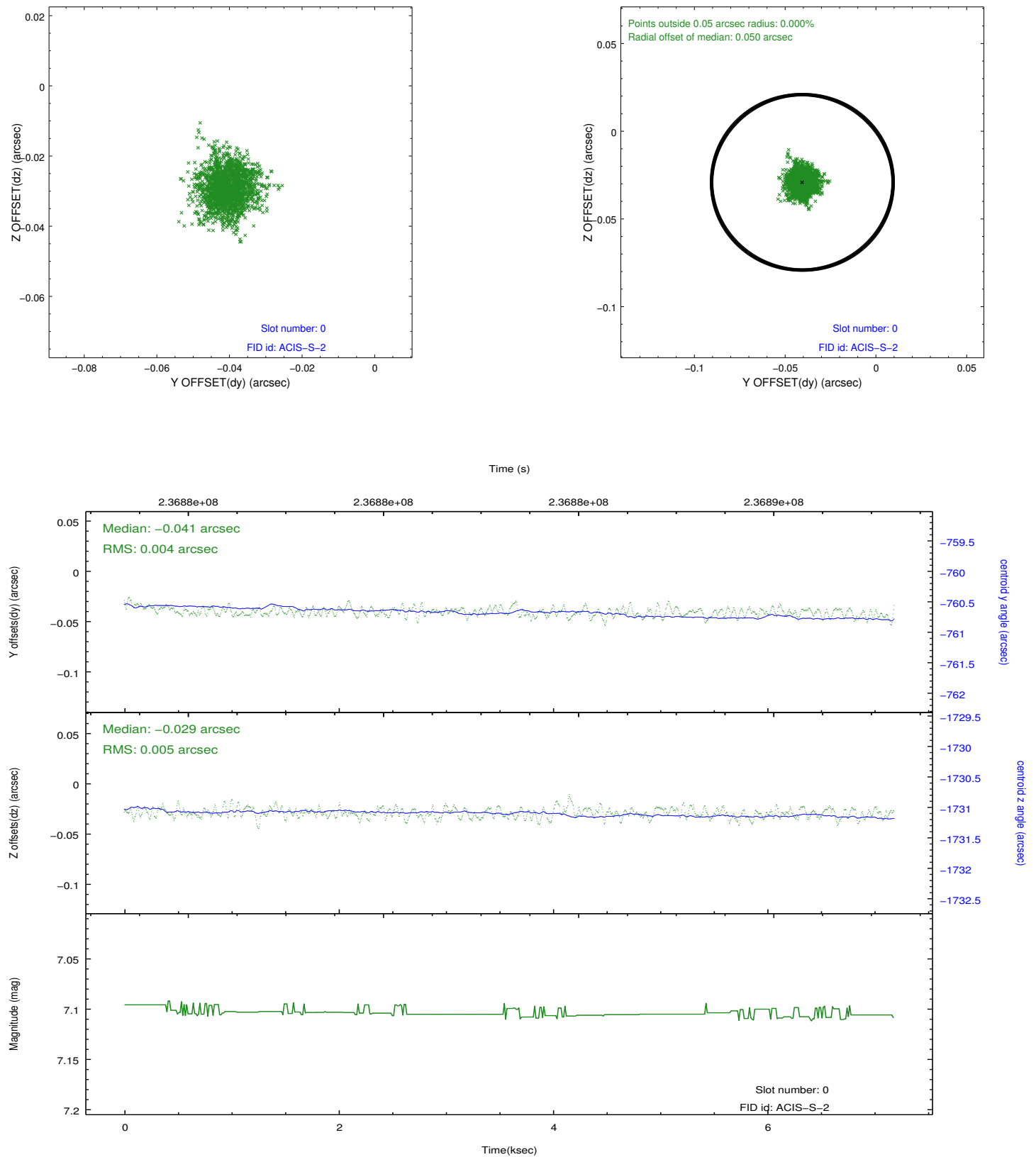


## 2.4.5 Slot 7

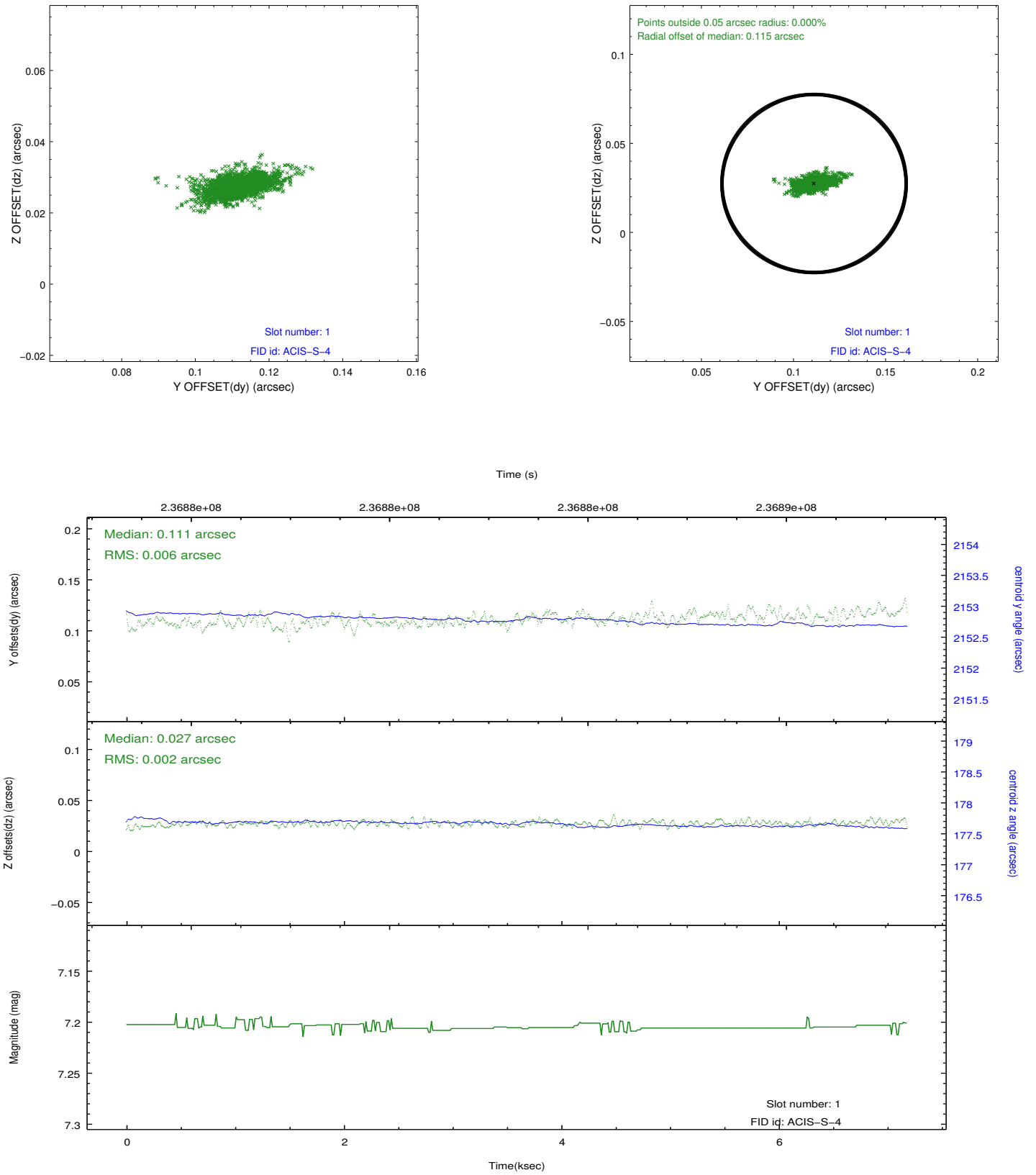


## 2.5 FID Slots

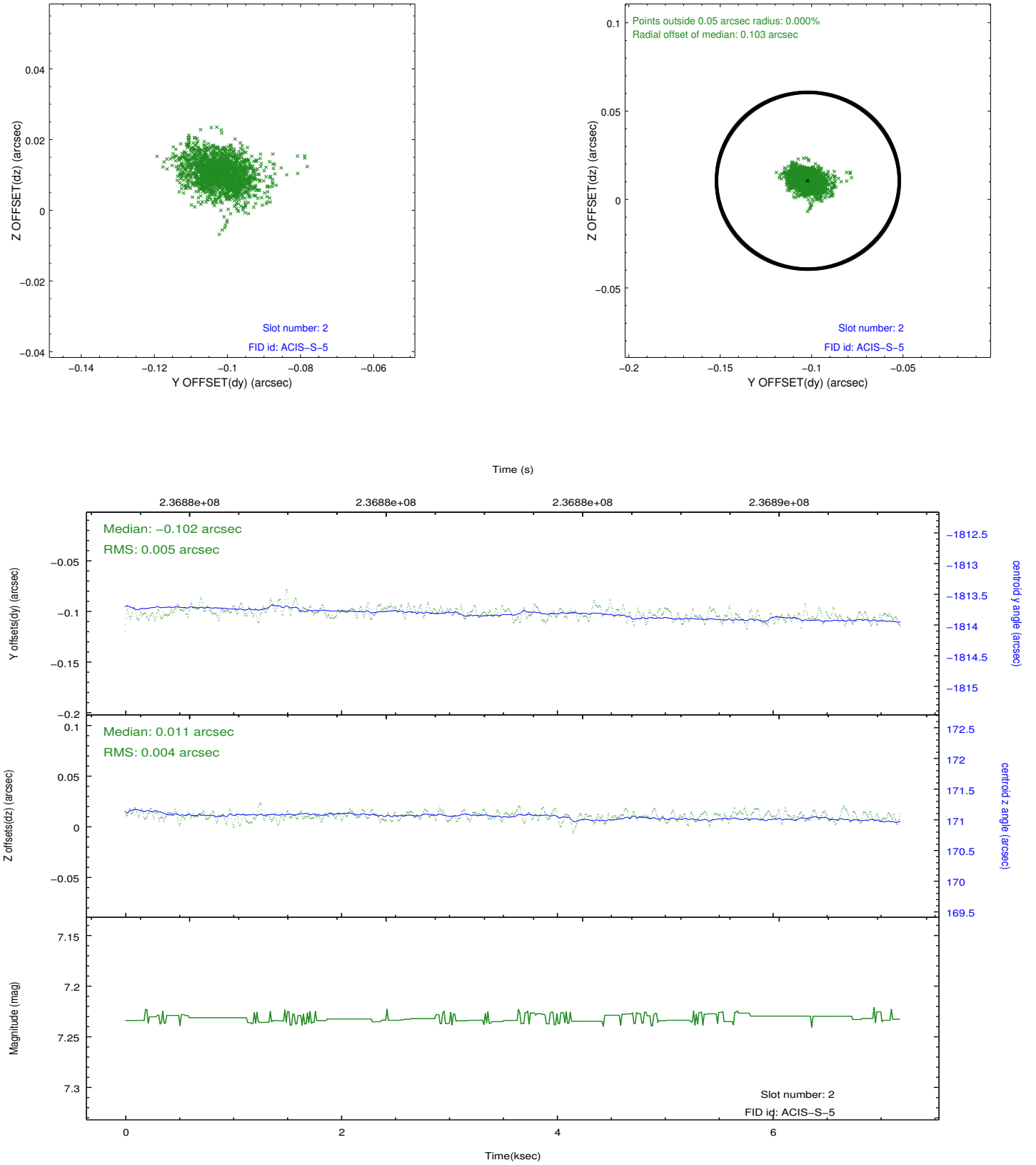
### 2.5.1 Slot 0



## 2.5.2 Slot 1



### 2.5.3 Slot 2



# A Summary

## A.1 Status

V&V Scientist	Jen Lauer
V&V Date (YYYY-MM-DD)	2013.01.17
V&V Edition	1
V&V Disposition and Status	OK
V&V Charge Time	7.187199

## A.2 Comments

This is a moving target. Users will need to run `sso_freeze` or similar software to position the events in the reference frame of the target.