

V&V Reference Report

L2 ASCDS Version : 8.5.1.1

Observation 6223 - L2 Version 3
Chandra X-Ray Center

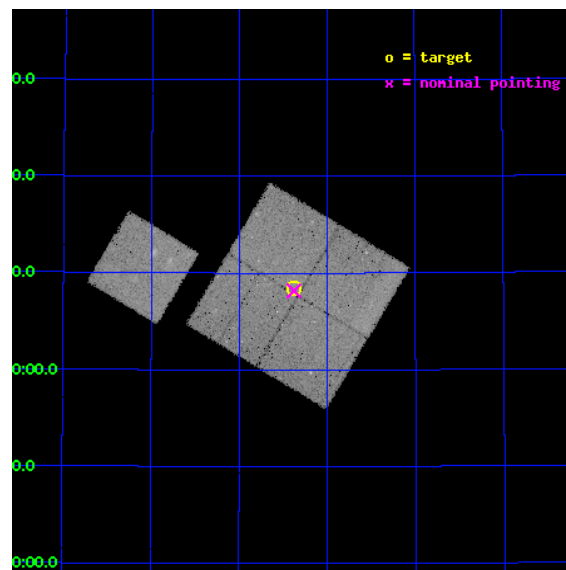
L2 Processing Date : Dec 28 2012

Contents

1	Front	2
2	OBI	3
2.1	OBI	3
2.1.1	Images	3
2.1.2	Bias	3
2.1.3	Parameters	4
2.1.4	Events	4
2.2	Compared Parameters	5
2.3	Aspect	6
2.4	Star Slots	9
2.4.1	Slot 3	9
2.4.2	Slot 4	10
2.4.3	Slot 5	11
2.4.4	Slot 6	12
2.4.5	Slot 7	13
2.5	FID Slots	14
2.5.1	Slot 0	14
2.5.2	Slot 1	15
2.5.3	Slot 2	16
A	Summary	17
A.1	Status	17
A.2	Comments	17

1 Front

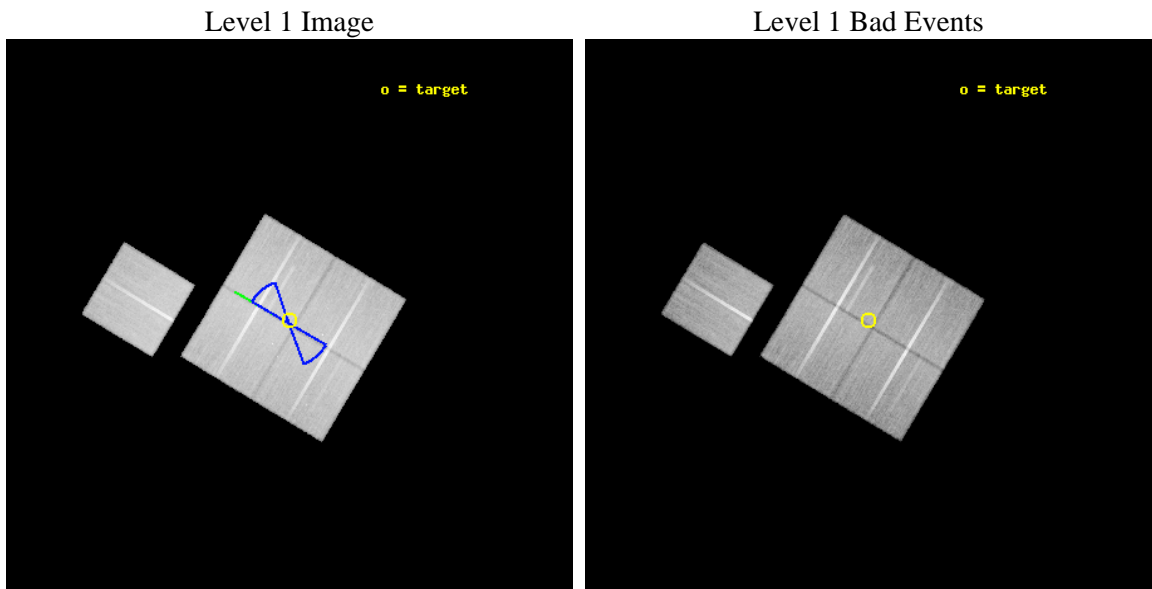
seq_num	900354	Sequence number
obs_id	6223	Observation id
title	Deep Chandra Imaging of the Extended Groth Strip: The Co-evolution of Black Holes and Galaxies	Proposal title
observer	Prof Kirpal Nandra	Principal investigator
object	EGS-7	Source name
dtcycle	0	
cycle	P	events from which exps? Prim/Second/Both
ra_targ	213.843735	Observer's specified target RA [deg]
dec_targ	52.140667	Observer's specified target Dec [deg]
ra_nom	213.84479794244	Nominal RA [deg]
dec_nom	52.136058880352	Nominal Dec [deg]
roll_nom	300.96385381949	Nominal Roll [deg]
revision	3	Processing version of data
ontime	50163.995072186	Sum of GTIs [s]
livetime	49508.565546372	Livetime [s]
ontime0	50179.699903488	Sum of GTIs [s]
ontime1	50173.417913139	Sum of GTIs [s]
ontime2	50160.854022115	Sum of GTIs [s]
ontime3	50163.995072186	Sum of GTIs [s]
ontime6	50173.417943031	Sum of GTIs [s]
l2events	133208	Number of level 2 events



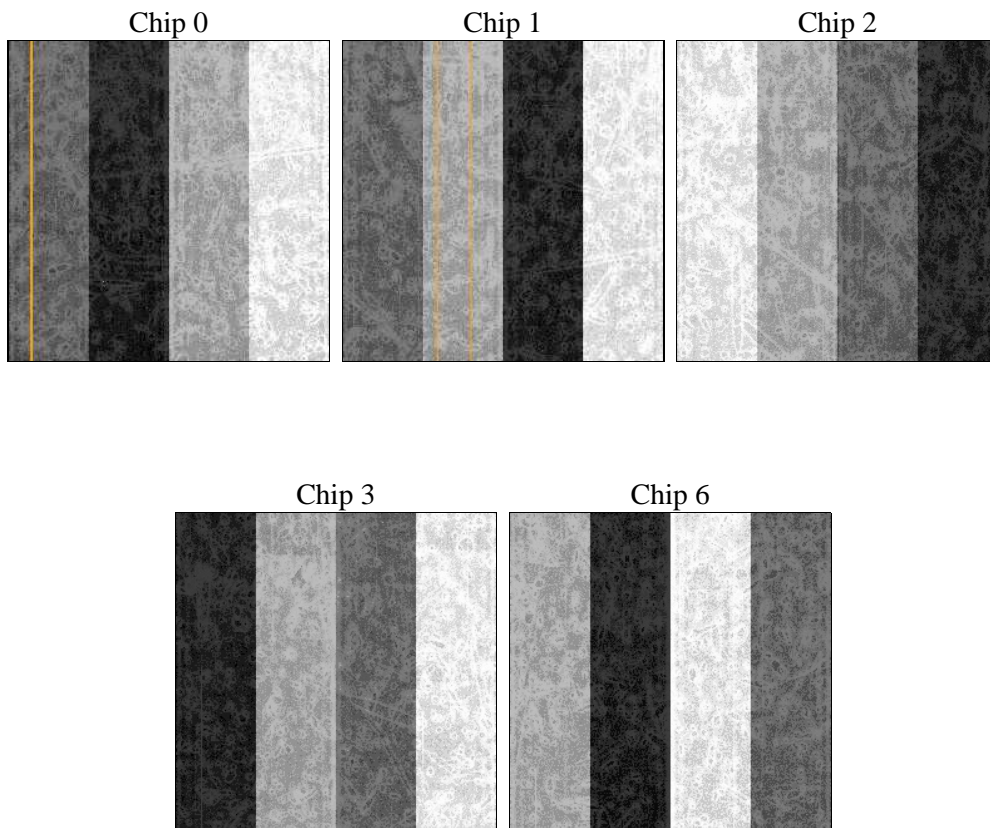
2 OBI

2.1 OBI

2.1.1 Images



2.1.2 Bias



2.1.3 Parameters

obi_num	0	Obi number	sched_exp_time	50000.000000	[s] Scheduled observation exposure time
ascdsver	8.5.1.1	Processing system revision	ontime	50163.995072186	Sum of GTIs [s]
caldsver	4.5.5	 	ontime0	50179.699903488	Sum of GTIs [s]
date	2012-12-28T20:18:36	Date and time of file creation	ontime1	50173.417913139	Sum of GTIs [s]
revision	3	Processing version of data	ontime2	50160.854022115	Sum of GTIs [s]
			ontime3	50163.995072186	Sum of GTIs [s]
			ontime6	50173.417943031	Sum of GTIs [s]
			l1events	1574660	Number of level 1 events

2.1.4 Events

	ccd 0	ccd 1	ccd 2	ccd 3	ccd 6
level 1 events	297378	301368	334857	318019	323038
rejected events	266126	265993	304027	288284	289391
rejected %	89%	88%	90%	90%	89%

	ccd 0	ccd 1	ccd 2	ccd 3	ccd 6
grade 0 events	11088	13237	11572	10830	12592
	3%	4%	3%	3%	3%
grade 1 events	137	161	177	175	151
	0%	0%	0%	0%	0%
grade 2 events	7641	7919	7475	6555	7306
	2%	2%	2%	2%	2%
grade 3 events	3765	3951	3404	3508	3827
	1%	1%	1%	1%	1%
grade 4 events	3487	3968	3475	3529	3754
	1%	1%	1%	1%	1%
grade 5 events	10983	12605	10417	12629	12777
	3%	4%	3%	3%	3%
grade 6 events	6031	7154	5647	6061	7019
	2%	2%	1%	1%	2%
grade 7 events	254246	252373	292690	274732	275612
	85%	83%	87%	86%	85%

2.2 Compared Parameters

Parameter	Planned	Actual	Parameter	Planned	Actual
Instrument	ACIS	ACIS	Obspar format version number	7	7
Detector	ACIS-01236	ACIS-01236	Obspar file type	PREDICTED	ACTUAL
Grating	NONE	NONE	Obspar update status	NONE	UPDATED
Data mode	VFAINT	VFAINT	Number of optional ACIS chips dropped	0	0
Observation mode	POINTING	POINTING	On-chip summing requested	N	N
[deg] Pointing RA	213.805675	213.8447979424354	Subarray requested	NONE	NONE
[deg] Pointing Dec	52.149270	52.13605888035159	Alternating exposures requested	N	N
[deg] Pointing Roll	300.786054	300.9638538194878	[s] Primary exposure time	0.000000	3.1
[deg] Roll angle	50.756000	50.756000			
[deg] Roll tolerance	20.000000	20.000000			
Roll constraint allows 180D rotation	Y	Y			
[mm] SIM focus pos	-0.782348	-0.7809083437167272			
[mm] SIM defocus	0	0.001439871863259334			
[mm] SIM translation stage pos	-233.592463	-233.5874344608287			
[mm] SIM translation stage offset	0	-0.005018542100998502			
[s] Observation start time (MET)	241853742.184000	241852007.72674			
Observation start date	2005-08-31T05:34:38	2005-08-31T05:06:47			
[s] Observation end time (MET)	241903742.184000	241904706.05416			
Observation end date	2005-08-31T19:27:58	2005-08-31T19:45:06			
Read mode	TIMED	TIMED			

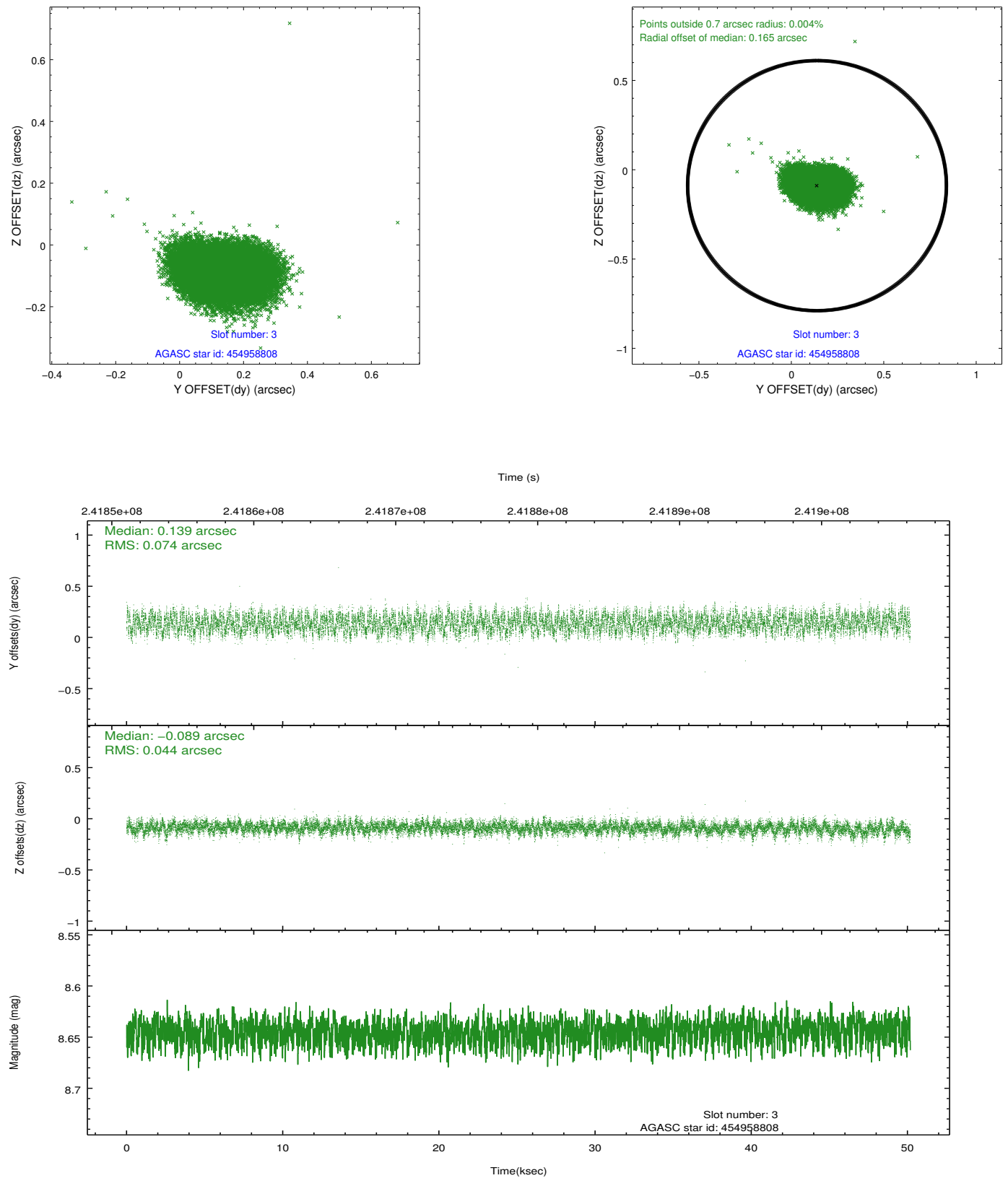
2.3 Aspect

Slot Statistics

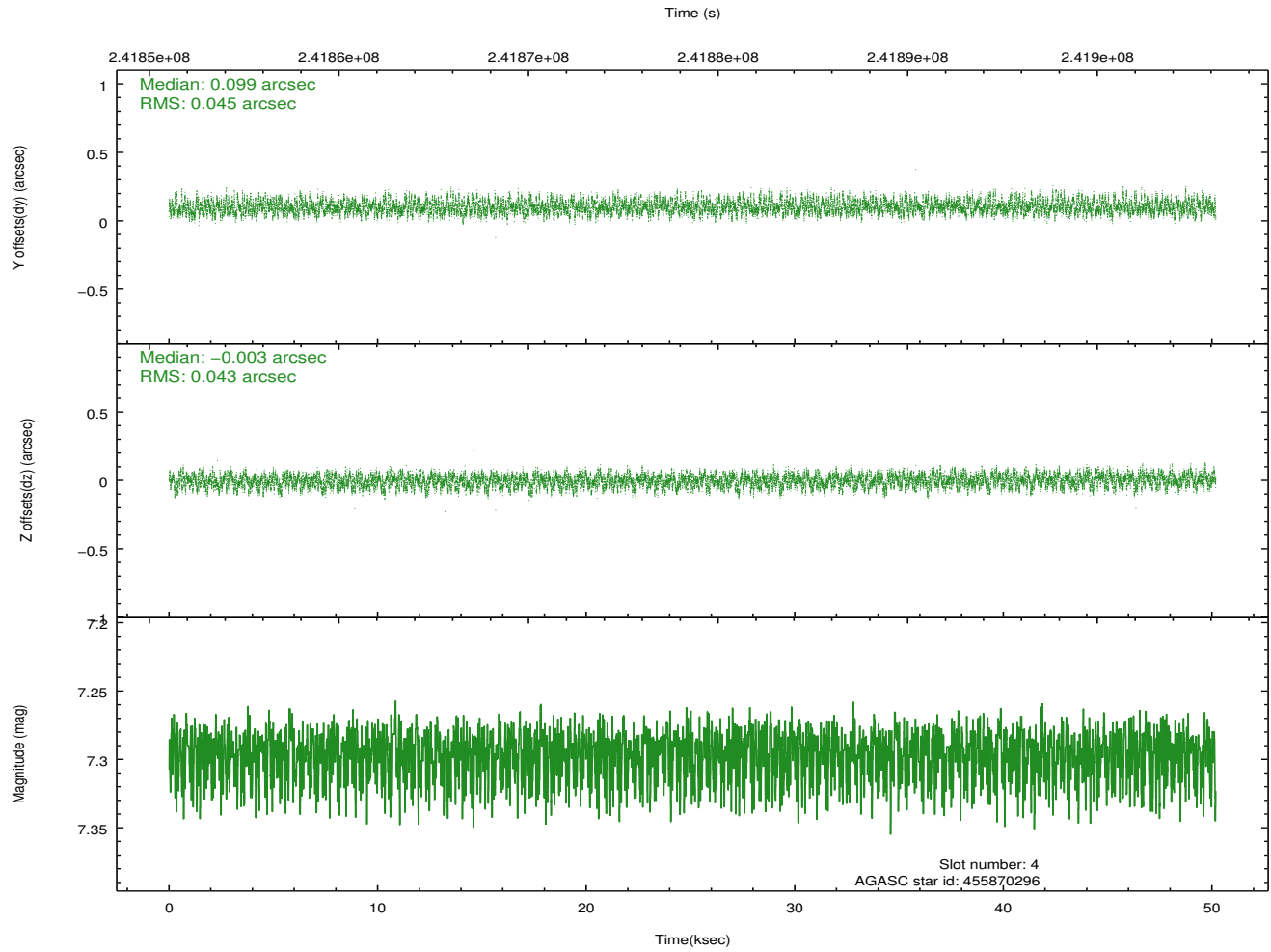
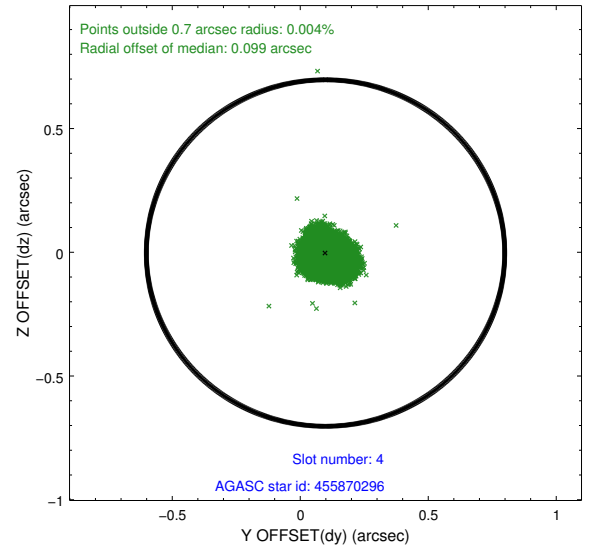
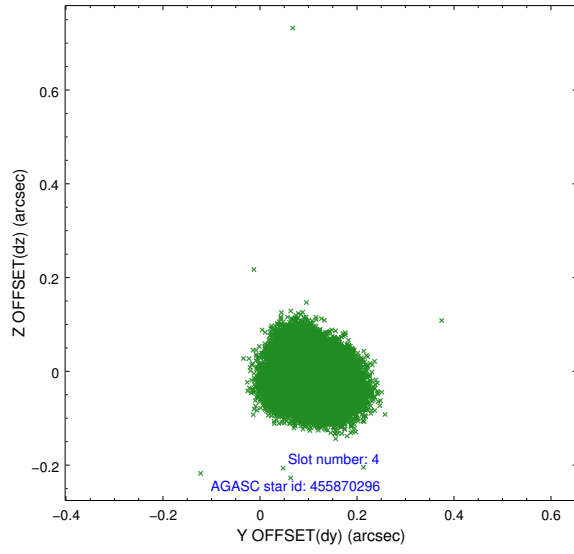
slot	status	id	mag	n_pts	med_dy	med_dz	dr1	dr2	ra	dec	mean_y	mean_z
0	FID	ACIS-I-1	7.24	12242	0.042	-0.023	0.011	0.056	0.000000	0.000000	933.01	-834.74
1	FID	ACIS-I-5	7.23	12241	-0.166	0.056	0.011	0.031	0.000000	0.000000	-1815.28	1062.88
2	FID	ACIS-I-6	7.25	12241	0.034	0.038	0.011	0.033	0.000000	0.000000	398.62	1707.31
3	GUIDE	454958808	8.65	24468	0.139	-0.089	0.092	0.147	213.416486	51.296487	2187.66	-2322.38
4	GUIDE	455870296	7.30	24481	0.099	-0.003	0.067	0.103	214.629779	52.033323	1283.99	1359.98
5	GUIDE	505806936	7.01	24482	-0.080	-0.006	0.055	0.111	213.820815	52.535927	-1178.86	741.10
6	GUIDE	505812376	7.55	24481	-0.099	-0.084	0.044	0.072	214.039537	52.937930	-2180.45	1889.49
7	GUIDE	454958240	9.05	24469	-0.069	0.177	0.111	0.174	212.550018	52.097330	-1280.92	-2468.62

2.4 Star Slots

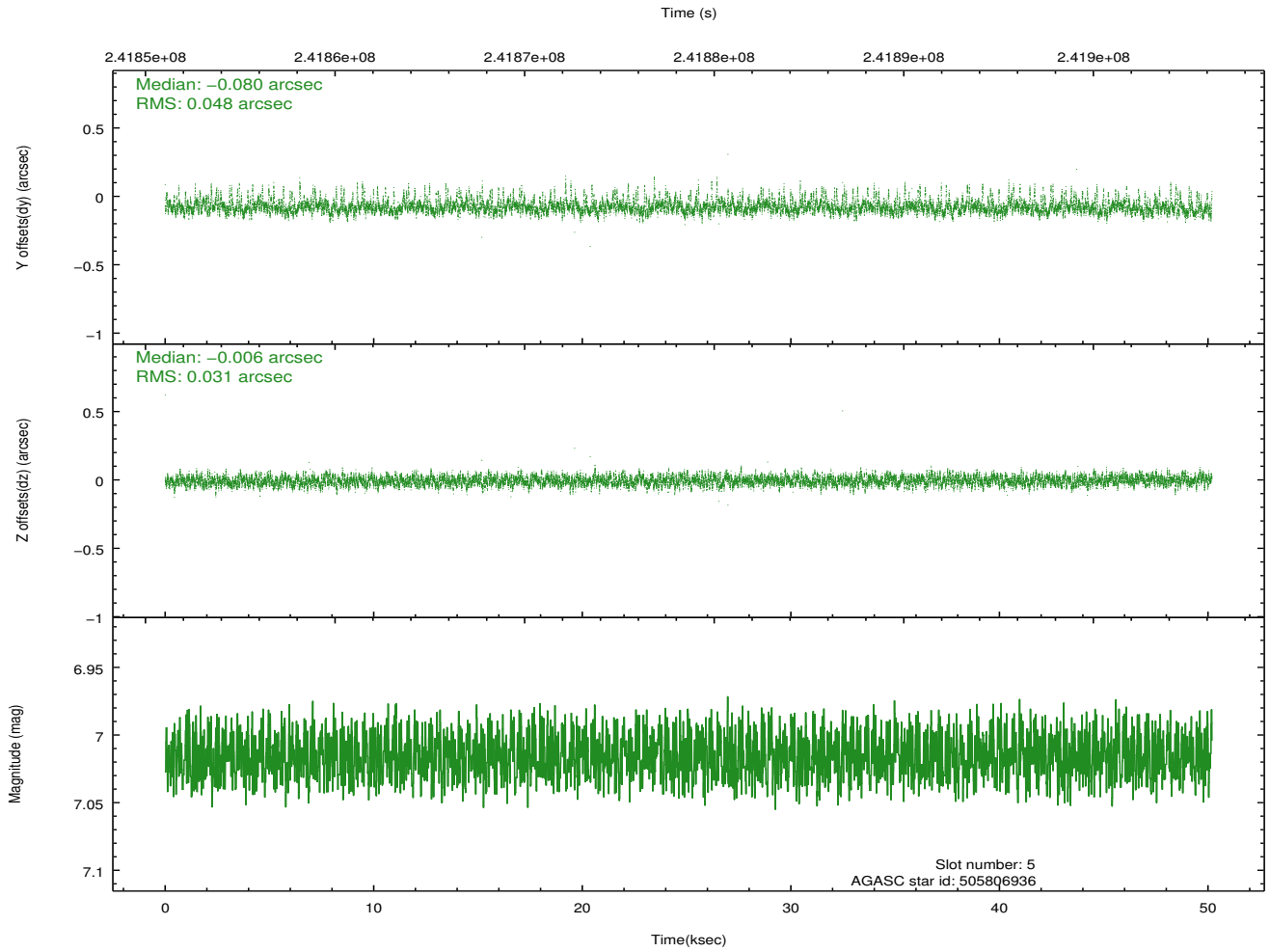
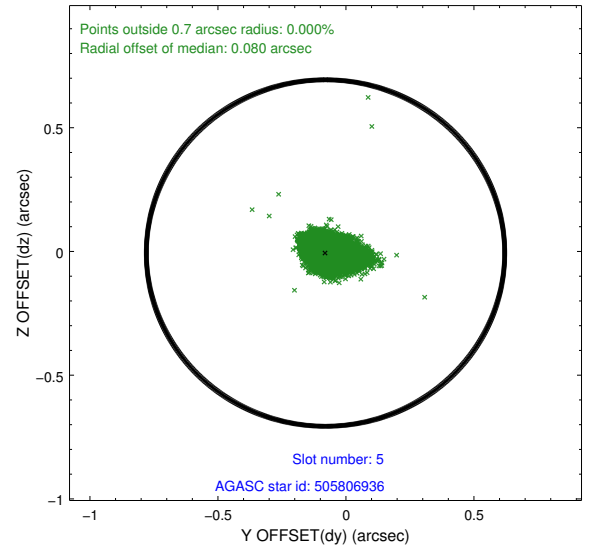
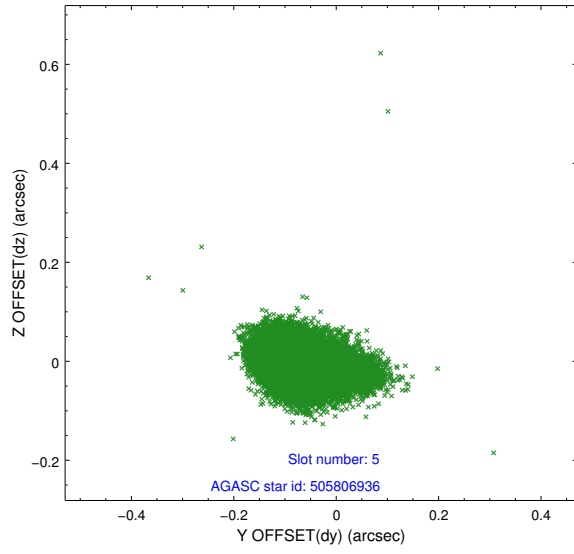
2.4.1 Slot 3



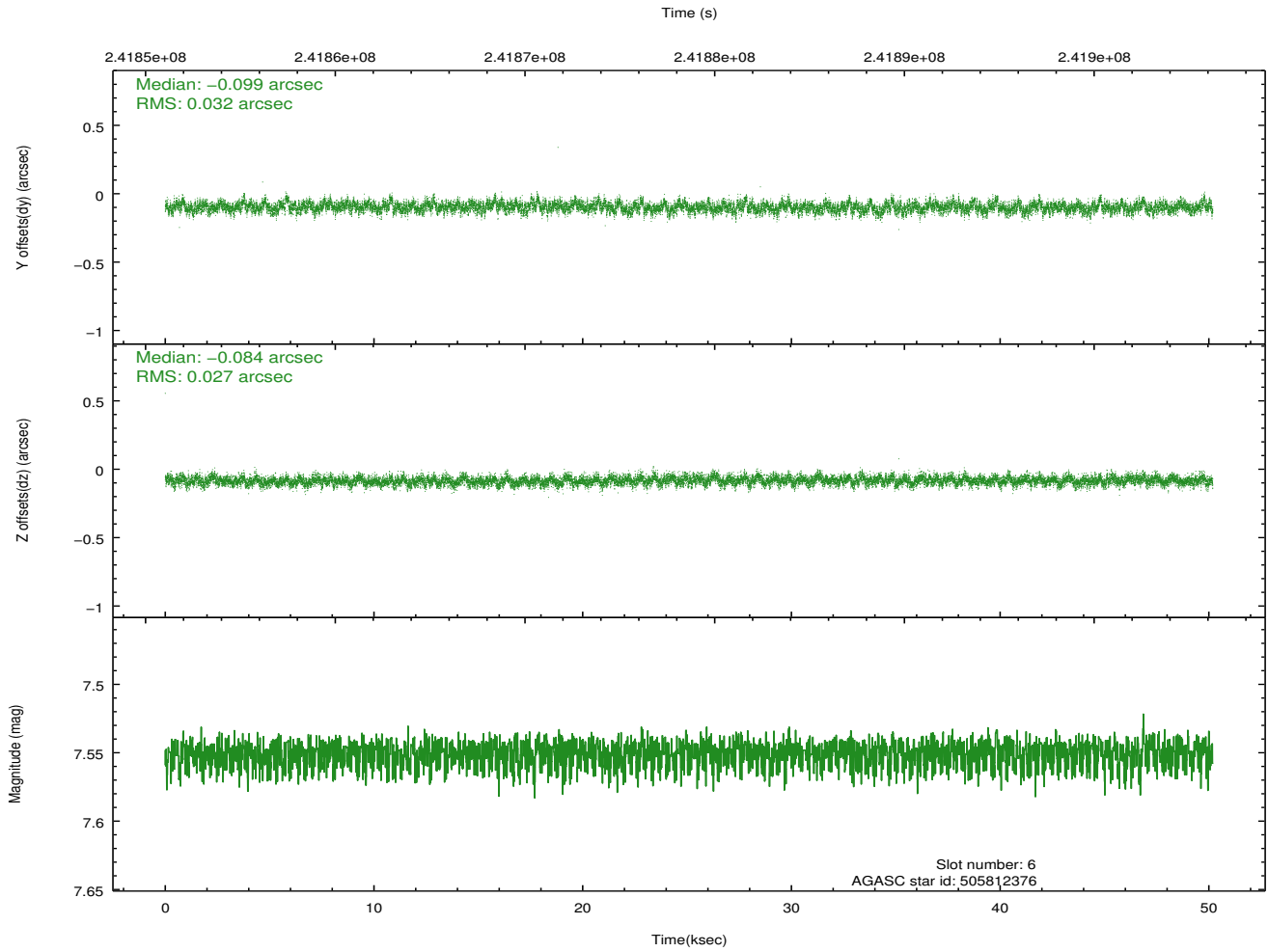
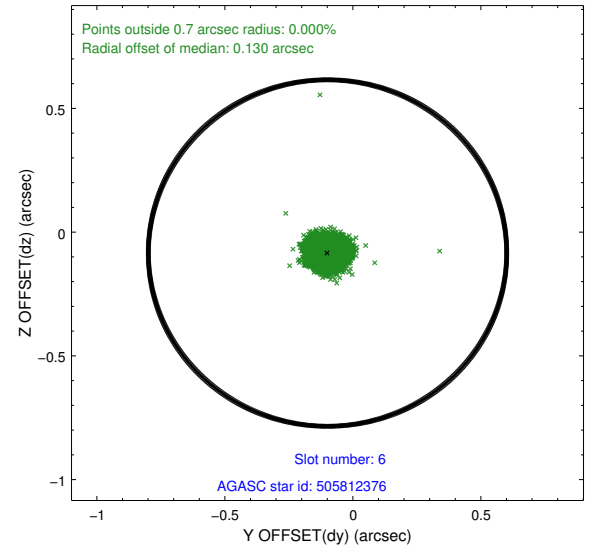
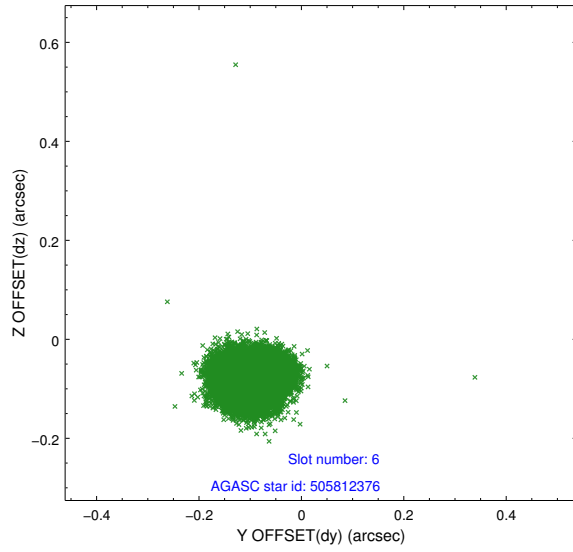
2.4.2 Slot 4



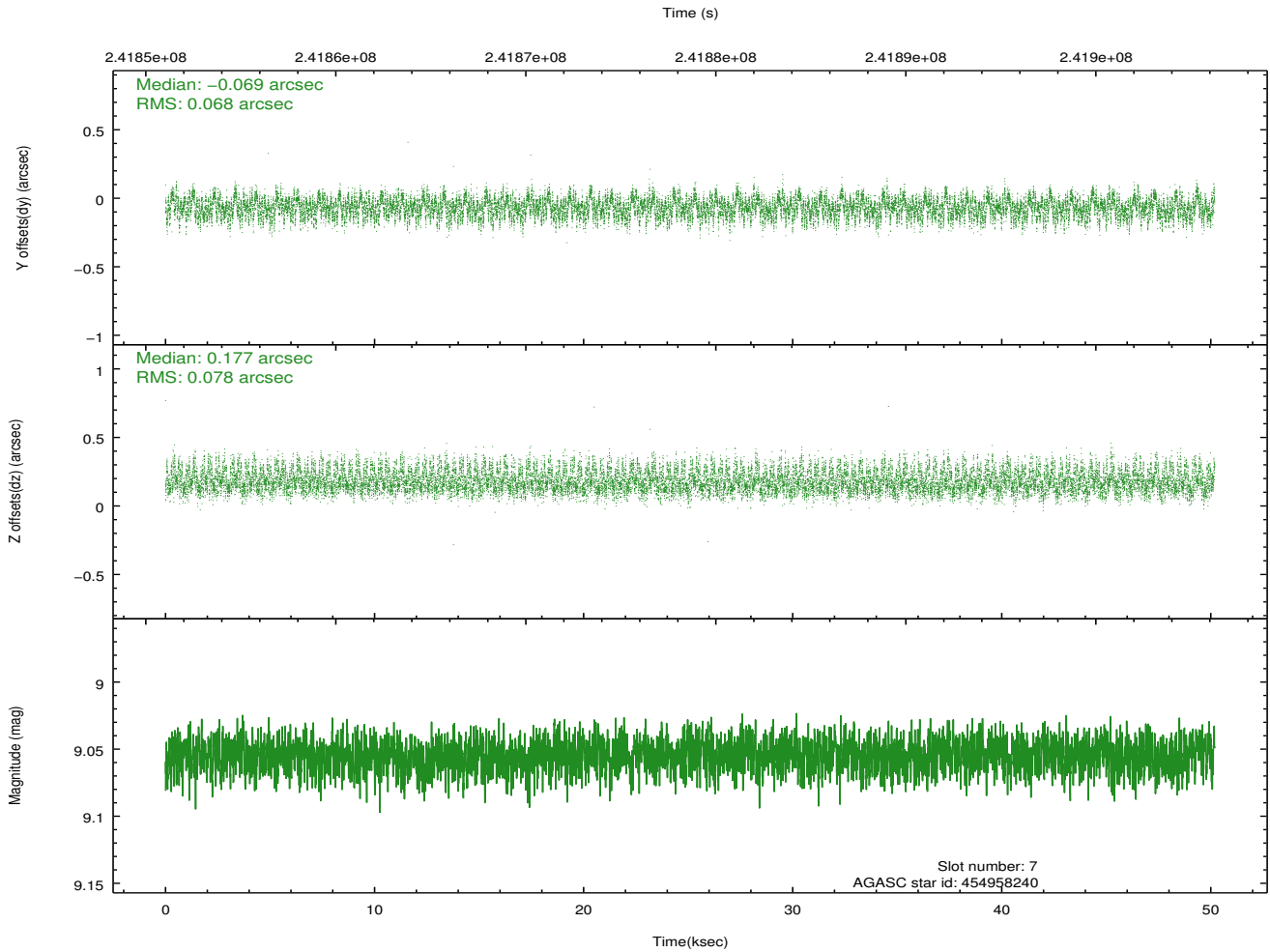
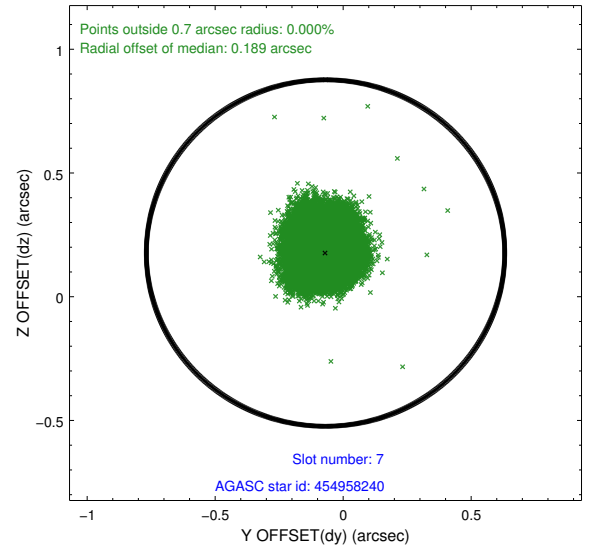
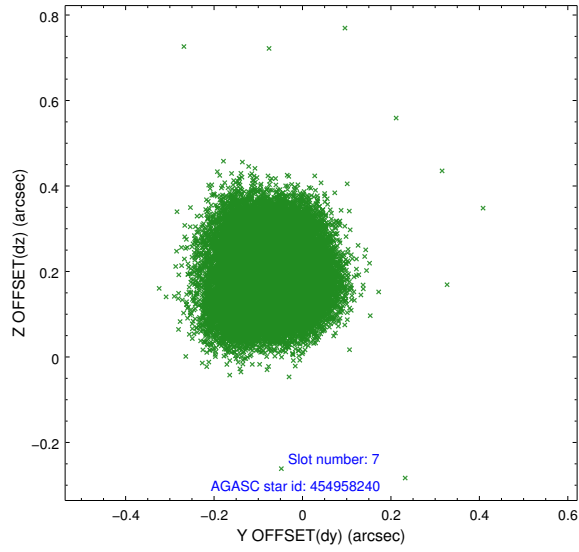
2.4.3 Slot 5



2.4.4 Slot 6

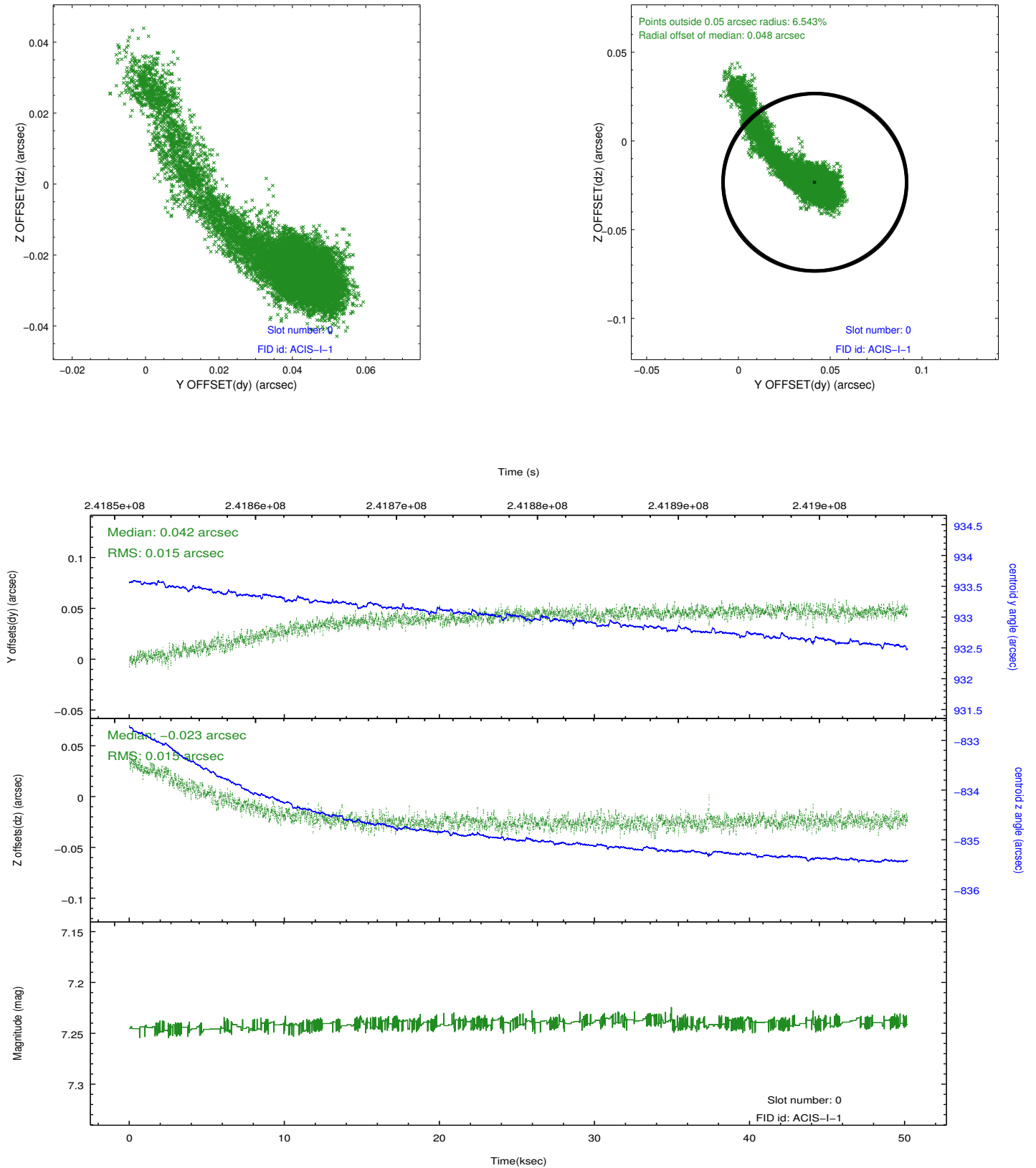


2.4.5 Slot 7

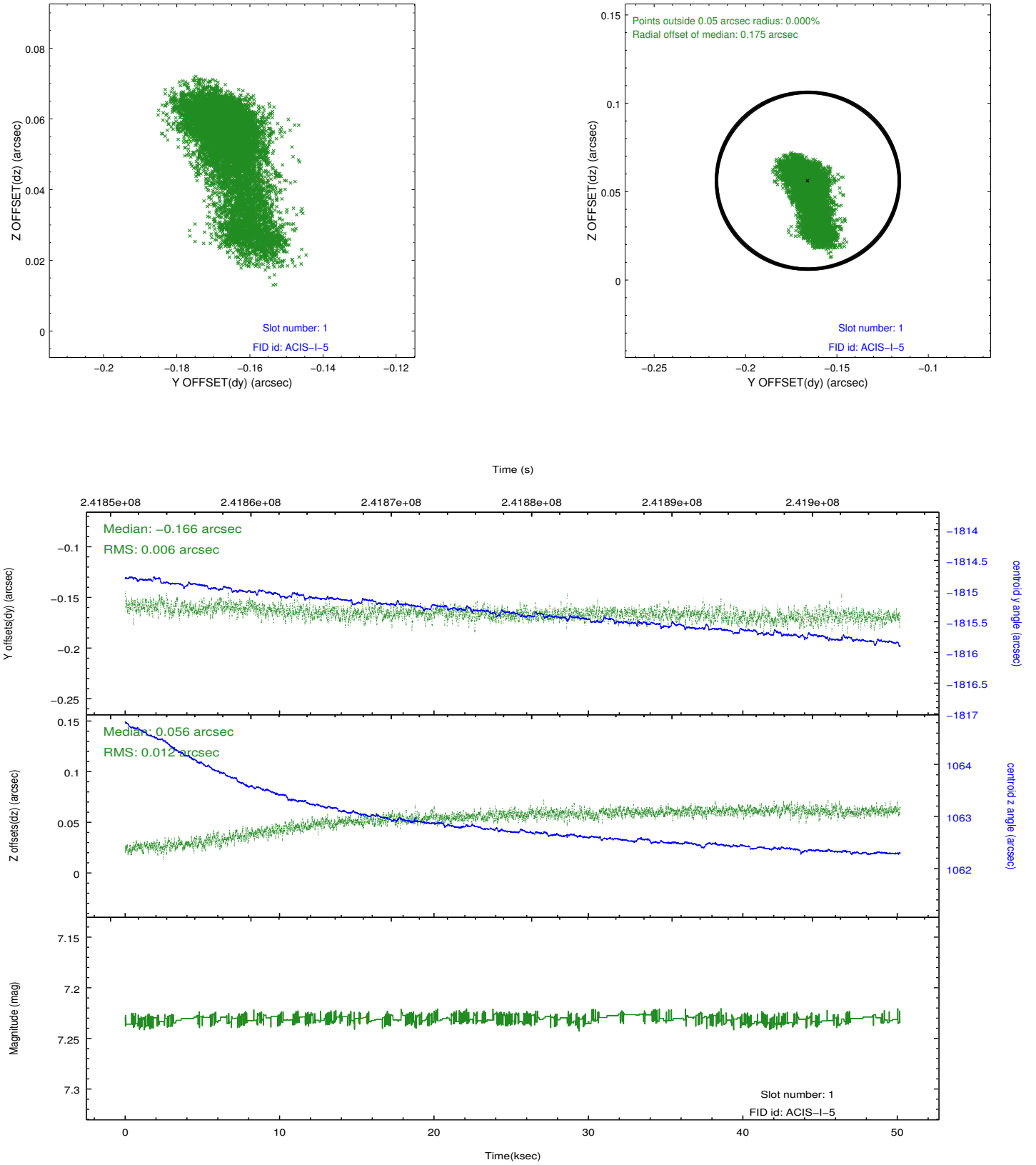


2.5 FID Slots

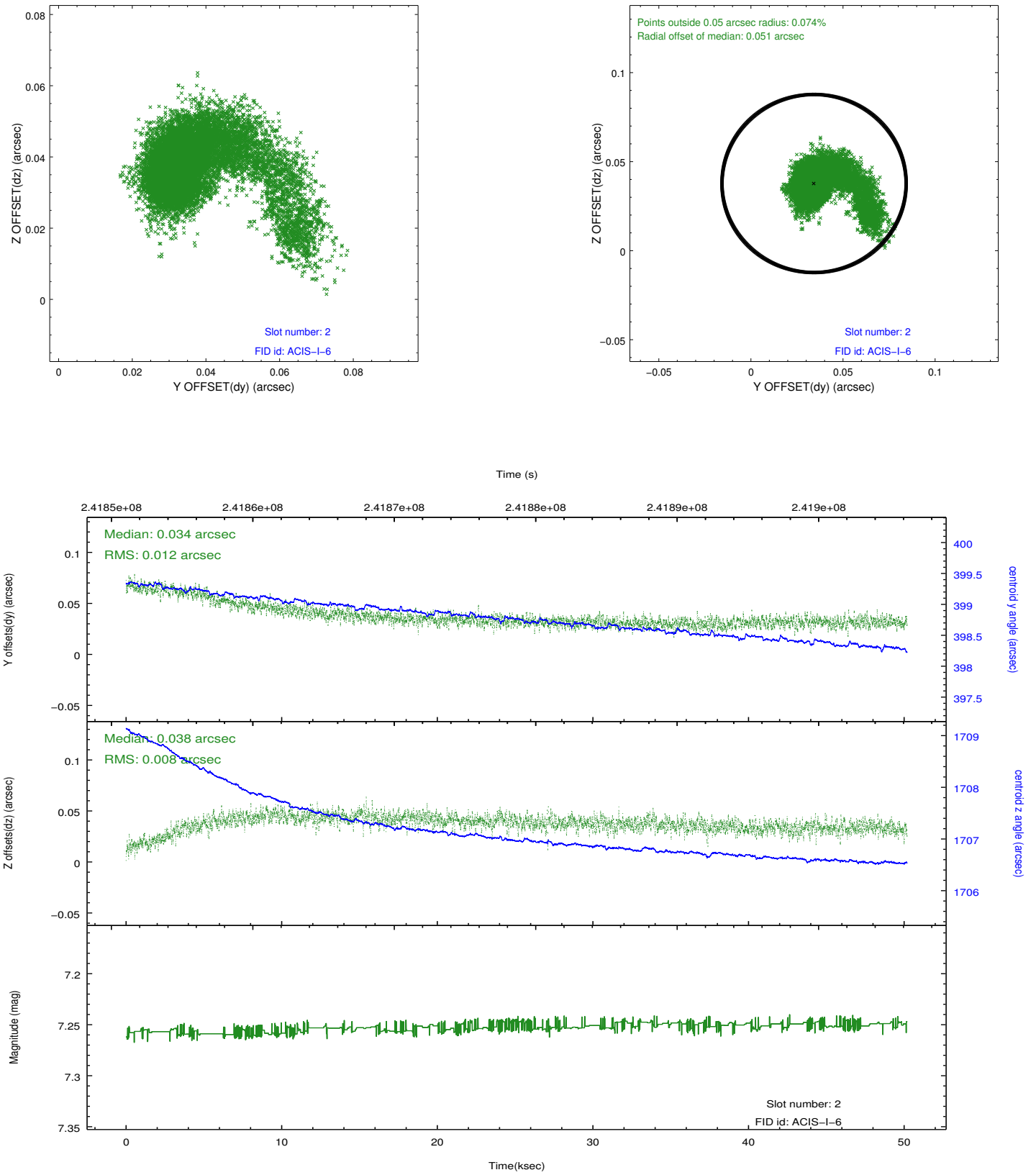
2.5.1 Slot 0



2.5.2 Slot 1



2.5.3 Slot 2



A Summary

A.1 Status

V&V Scientist	Beth Sundheim
V&V Date (YYYY-MM-DD)	2013.01.27
V&V Edition	1
V&V Disposition and Status	OK
V&V Charge Time	50.16399

A.2 Comments

Roll preference met.