

# V&V Reference Report

## L2 ASCDS Version : 8.4.5

Observation 62183 - L2 Version 4  
Chandra X-Ray Center

L2 Processing Date : Aug 21 2012

## Contents

<b>1</b>	<b>Front</b>	<b>2</b>
<b>2</b>	<b>OBI</b>	<b>3</b>
2.1	OBI . . . . .	3
2.1.1	Images . . . . .	3
2.1.2	Bias . . . . .	3
2.1.3	Parameters . . . . .	4
2.1.4	Events . . . . .	4
2.2	Compared Parameters . . . . .	5
2.3	Star Slots . . . . .	6
2.4	FID Slots . . . . .	6
<b>A</b>	<b>Summary</b>	<b>7</b>
A.1	Status . . . . .	7
A.2	Comments . . . . .	7

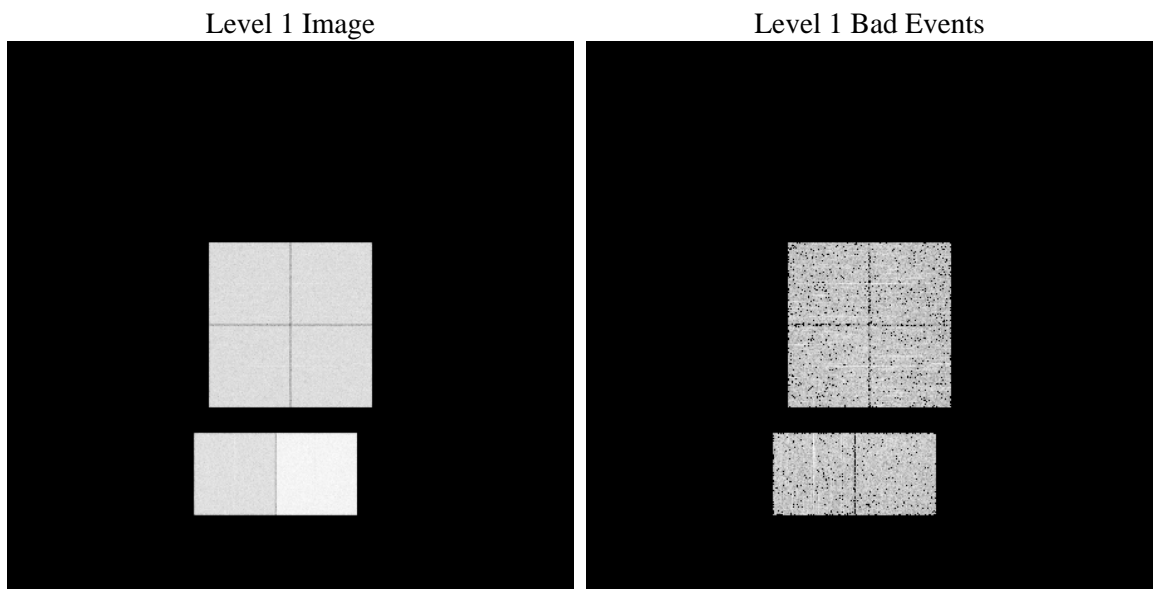
# 1 Front

seq_num	&#160	Sequence number
obs_id	62183	Observation id
title	ACIS-012367 diagnostics	Proposal title
observer	CHANDRA engineering request/realtime commanding	Principal investig
object	&#160	Source name
dtcycle	0	&#160
cycle	P	events from which exps? Prim/Second/Both
ra_targ	0.0	Observer's specified target RA [deg]
dec_targ	0.0	Observer's specified target Dec [deg]
ra_nom	180.01952756097	Nominal RA [deg]
dec_nom	-64.970658277737	Nominal Dec [deg]
roll_nom	41.031513218294	Nominal Roll [deg]
revision	4	Processing version of data
ontime	3190.1153942347	Sum of GTIs [s]
livetime	3176.9455110253	Livetime [s]
ontime0	1420.6265401319	Sum of GTIs [s]
ontime1	1459.3892728165	Sum of GTIs [s]
ontime2	1380.8623801544	Sum of GTIs [s]
ontime3	1429.4840728343	Sum of GTIs [s]
ontime6	1528.8122631535	Sum of GTIs [s]
ontime7	3190.1153942347	Sum of GTIs [s]
l2events	858413	Number of level 2 events

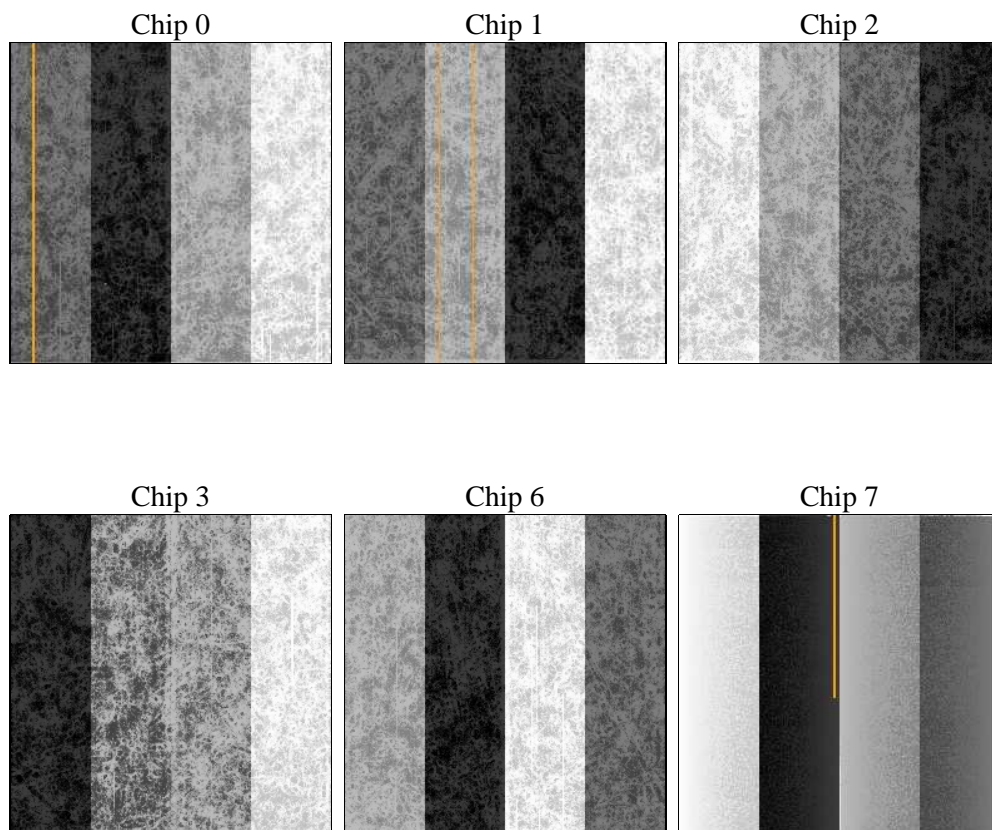
## 2 OBI

### 2.1 OBI

#### 2.1.1 Images



#### 2.1.2 Bias



### 2.1.3 Parameters

obi_num	0	Obi number	sched_exp_time	0.0	[s] Scheduled observation exposure time
ascdsver	8.4.5	Processing system revision	ontime	3190.1153942347	Sum of GTIs [s]
caldsver	4.5.1.1	&#160	ontime0	1420.6265401319	Sum of GTIs [s]
date	2012-08-22T02:22:38	Date and time of file creation	ontime1	1459.3892728165	Sum of GTIs [s]
revision	4	Processing version of data	ontime2	1380.8623801544	Sum of GTIs [s]
			ontime3	1429.4840728343	Sum of GTIs [s]
			ontime6	1528.8122631535	Sum of GTIs [s]
			ontime7	3190.1153942347	Sum of GTIs [s]
			l1events	993505	Number of level 1 events

### 2.1.4 Events

	ccd 0	ccd 1	ccd 2	ccd 3	ccd 6	ccd 7		ccd 0	ccd 1	ccd 2	ccd 3	ccd 6	ccd 7
level 1 events	131554	134789	131597	135434	149846	310285	grade 0 events	63568	65110	63122	65704	71250	77216
rejected events	15928	15248	17178	16474	17411	16683		48%	48%	47%	48%	47%	24%
rejected %	12%	11%	13%	12%	11%	5%	grade 1 events	922	889	969	936	991	443
								0%	0%	0%	0%	0%	0%
							grade 2 events	20421	20843	20488	20921	23083	65827
								15%	15%	15%	15%	15%	21%
							grade 3 events	7546	7766	7510	7630	8306	30918
								5%	5%	5%	5%	5%	9%
							grade 4 events	7448	7843	7329	7765	8249	29951
								5%	5%	5%	5%	5%	9%
							grade 5 events	1422	1495	1416	1459	1752	4402
								1%	1%	1%	1%	1%	1%
							grade 6 events	17447	17979	16765	16940	21547	90577
								13%	13%	12%	12%	14%	29%
							grade 7 events	12780	12864	13998	14079	14668	10951
								9%	9%	10%	10%	9%	3%

## 2.2 Compared Parameters

Parameter	Planned	Actual
Instrument	ACIS	ACIS
Detector	ACIS-012367	ACIS-012367
Grating	NONE	NONE
Data mode	FAINT	FAINT
Observation mode	SECONDARY	SECONDARY
[deg] Pointing RA	0	180.0195275609675
[deg] Pointing Dec	0	-64.9706582777366
[deg] Pointing Roll	0.0	41.03151321829399
[mm] SIM focus pos	-0.782348	-1.038866356238299
[mm] SIM defocus	0	0.4944702831659975
[mm] SIM translation stage pos	-233.592463	250.466033080201
[mm] SIM translation stage offset	0	-0.01005468664627074
[s] Observation start time (MET)	66064031.18763	66064030.419096
Observation start date	2000-02-04T15:07:11	2000-02-04T15:07:10
[s] Observation end time (MET)	66071331.237896	66071330.469362
Observation end date	2000-02-04T17:08:51	2000-02-04T17:08:50
Read mode	TIMED	TIMED

Parameter	Planned	Actual
Obspar format version number	7	7
Obspar file type	PREDICTED	ACTUAL
Obspar update status	NONE	UPDATED
On-chip summing requested	N	N
Subarray requested	NONE	NONE
Alternating exposures requested	N	N
[s] Primary exposure time	9.9	9.9

## **2.3 Star Slots**

## **2.4 FID Slots**

## A Summary

### A.1 Status

V&V Scientist	Jen Lauer
V&V Date (YYYY-MM-DD)	2012.08.23
V&V Edition	1
V&V Disposition and Status	OK
V&V Charge Time	3.1901153942347

### A.2 Comments