

V&V Reference Report

L2 ASCDS Version : 8.4.5

Observation 62173 - L2 Version 4
Chandra X-Ray Center

L2 Processing Date : Aug 22 2012

Contents

1	Front	2
2	OBI	3
2.1	OBI	3
2.1.1	Images	3
2.1.2	Bias	3
2.1.3	Parameters	4
2.1.4	Events	4
2.2	Compared Parameters	5
2.3	Star Slots	6
2.4	FID Slots	6
A	Summary	7
A.1	Status	7
A.2	Comments	7

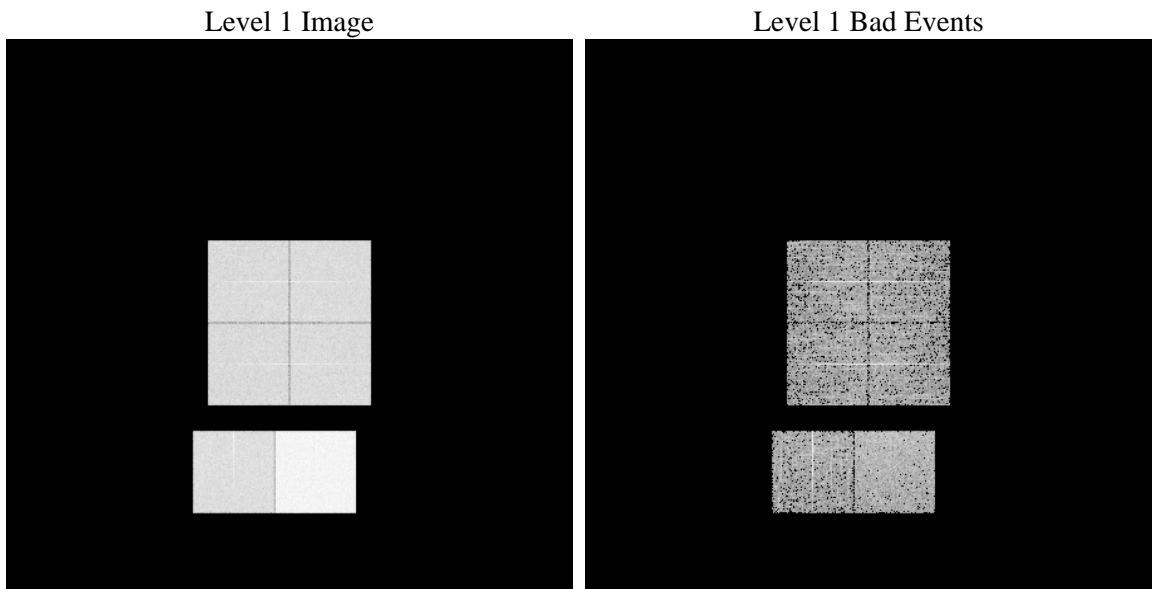
1 Front

seq_num	 	Sequence number
obs_id	62173	Observation id
title	ACIS-012367 diagnostics	Proposal title
observer	CHANDRA engineering request/realtime commanding	Principal investig
object	 	Source name
dtcycle	0	
cycle	P	events from which exps? Prim/Second/Both
ra_targ	0.0	Observer's specified target RA [deg]
dec_targ	0.0	Observer's specified target Dec [deg]
ra_nom	83.651044608281	Nominal RA [deg]
dec_nom	22.476549363959	Nominal Dec [deg]
roll_nom	273.19699022919	Nominal Roll [deg]
revision	4	Processing version of data
ontime	3474.375268884	Sum of GTIs [s]
livetime	3430.3806372118	Livetime [s]
ontime0	1409.8510563299	Sum of GTIs [s]
ontime1	1445.502496399	Sum of GTIs [s]
ontime2	1348.0267422572	Sum of GTIs [s]
ontime3	1396.8064824268	Sum of GTIs [s]
ontime6	1510.3232167438	Sum of GTIs [s]
ontime7	3474.375268884	Sum of GTIs [s]
l2events	928914	Number of level 2 events

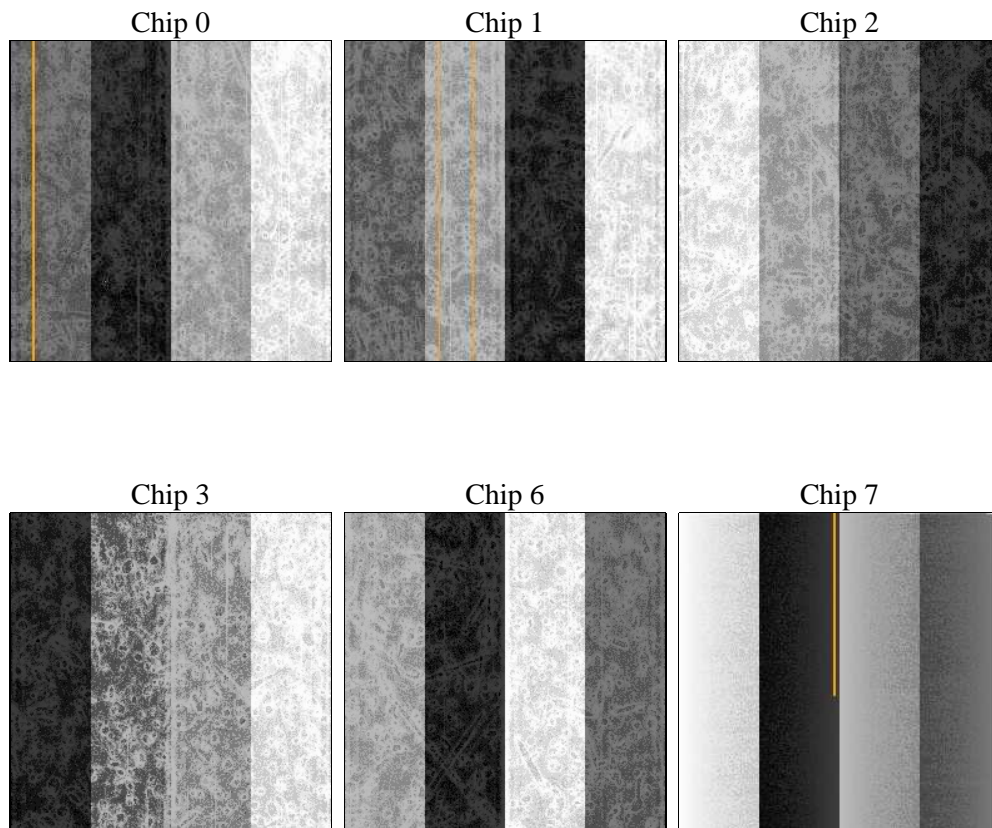
2 OBI

2.1 OBI

2.1.1 Images



2.1.2 Bias



2.1.3 Parameters

obi_num	0	Obi number	sched_exp_time	0.0	[s] Scheduled observation exposure time
ascdsver	8.4.5	Processing system revision	ontime	3474.375268884	Sum of GTIs [s]
caldsver	4.5.1.1	 	ontime0	1409.8510563299	Sum of GTIs [s]
date	2012-08-22T03:11:57	Date and time of file creation	ontime1	1445.502496399	Sum of GTIs [s]
revision	4	Processing version of data	ontime2	1348.0267422572	Sum of GTIs [s]
			ontime3	1396.8064824268	Sum of GTIs [s]
			ontime6	1510.3232167438	Sum of GTIs [s]
			ontime7	3474.375268884	Sum of GTIs [s]
			l1events	1062887	Number of level 1 events

2.1.4 Events

	ccd 0	ccd 1	ccd 2	ccd 3	ccd 6	ccd 7		ccd 0	ccd 1	ccd 2	ccd 3	ccd 6	ccd 7
level 1 events	139906	142640	136450	141265	157275	345351	grade 0 events	68718	70512	67316	70398	76944	84573
rejected events	14922	14435	15059	15054	15987	20397		49%	49%	49%	49%	48%	24%
rejected %	10%	10%	11%	10%	10%	5%	grade 1 events	454	482	430	496	482	228
								0%	0%	0%	0%	0%	0%
							grade 2 events	22189	22475	21410	21887	24352	71839
								15%	15%	15%	15%	15%	20%
							grade 3 events	7874	8182	7728	8130	8791	33500
								5%	5%	5%	5%	5%	9%
							grade 4 events	7878	8105	7662	7989	8654	33560
								5%	5%	5%	5%	5%	9%
							grade 5 events	1080	1053	1055	1079	1194	4760
								0%	0%	0%	0%	0%	1%
							grade 6 events	18325	18931	17275	17807	22547	101482
								13%	13%	12%	12%	14%	29%
							grade 7 events	13388	12900	13574	13479	14311	15409
								9%	9%	9%	9%	9%	4%

2.2 Compared Parameters

Parameter	Planned	Actual	Parameter	Planned	Actual
Instrument	ACIS	ACIS	Obspar format version number	7	7
Detector	ACIS-012367	ACIS-012367	Obspar file type	PREDICTED	ACTUAL
Grating	NONE	NONE	Obspar update status	NONE	UPDATED
Data mode	FAINT	FAINT	On-chip summing requested	N	N
Observation mode	SECONDARY	SECONDARY	Subarray requested	NONE	NONE
[deg] Pointing RA	0	83.65104460828118	Alternating exposures requested	N	N
[deg] Pointing Dec	0	22.47654936395858	[s] Primary exposure time	3.2	3.2
[deg] Pointing Roll	0.0	273.1969902291909			
[mm] SIM focus pos	-0.782348	-0.6828225247311905			
[mm] SIM defocus	0	0.8505141146731063			
[mm] SIM translation stage pos	-233.592463	250.466033080201			
[mm] SIM translation stage offset	0	-0.01005468664627074			
[s] Observation start time (MET)	66294867.345971	66294866.577502			
Observation start date	2000-02-07T07:14:27	2000-02-07T07:14:26			
[s] Observation end time (MET)	66302624.546253	66302623.777784			
Observation end date	2000-02-07T09:23:45	2000-02-07T09:23:43			
Read mode	TIMED	TIMED			

2.3 Star Slots

2.4 FID Slots

A Summary

A.1 Status

V&V Scientist	Jen Lauer
V&V Date (YYYY-MM-DD)	2012.08.23
V&V Edition	1
V&V Disposition and Status	OK
V&V Charge Time	3.474375268884

A.2 Comments