

# V&V Reference Report

## L2 ASCDS Version : 8.4.5

Observation 61913 - L2 Version 3  
Chandra X-Ray Center

L2 Processing Date : Sep 5 2012

## Contents

<b>1</b>	<b>Front</b>	<b>2</b>
<b>2</b>	<b>OBI</b>	<b>3</b>
2.1	OBI . . . . .	3
2.1.1	Images . . . . .	3
2.1.2	Bias . . . . .	3
2.1.3	Parameters . . . . .	4
2.1.4	Events . . . . .	4
2.2	Compared Parameters . . . . .	5
2.3	Star Slots . . . . .	6
2.4	FID Slots . . . . .	6
<b>A</b>	<b>Summary</b>	<b>7</b>
A.1	Status . . . . .	7
A.2	Comments . . . . .	7

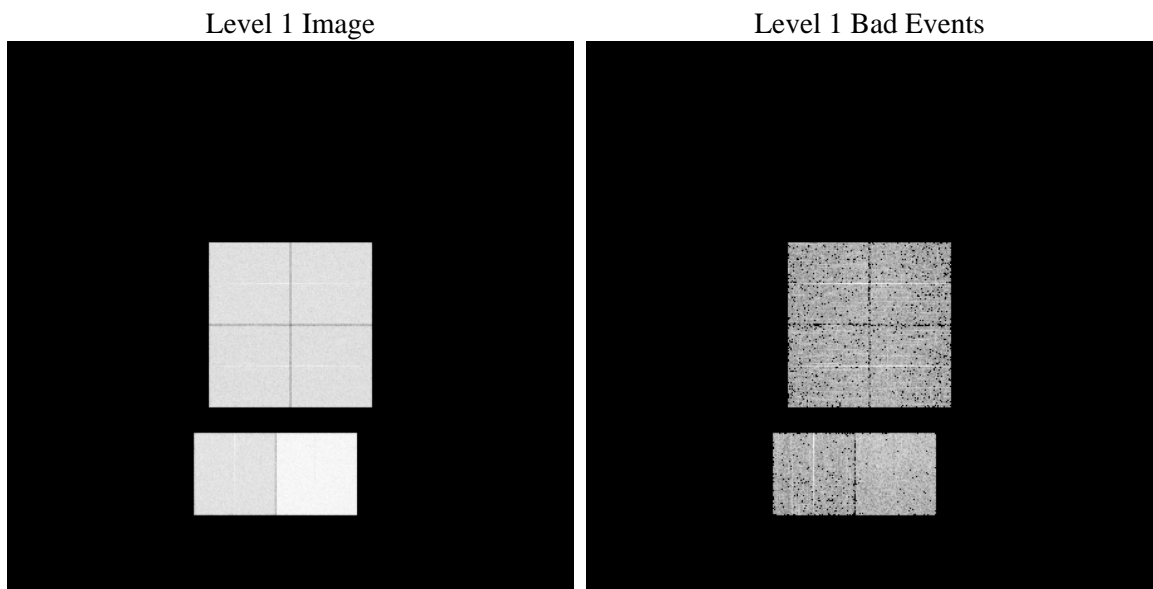
# 1 Front

seq_num	&#160	Sequence number
obs_id	61913	Observation id
title	ACIS-012367 diagnostics	Proposal title
observer	CHANDRA engineering request/realtime commanding	Principal investig
object	&#160	Source name
dtcycle	0	&#160
cycle	P	events from which exps? Prim/Second/Both
ra_targ	0.0	Observer's specified target RA [deg]
dec_targ	0.0	Observer's specified target Dec [deg]
ra_nom	15.778321403117	Nominal RA [deg]
dec_nom	24.371907652548	Nominal Dec [deg]
roll_nom	143.73511167731	Nominal Roll [deg]
revision	3	Processing version of data
ontime	5224.5191534758	Sum of GTIs [s]
livetime	5158.3631461267	Livetime [s]
ontime0	2369.1981900781	Sum of GTIs [s]
ontime1	2382.16242975	Sum of GTIs [s]
ontime2	2209.7174877971	Sum of GTIs [s]
ontime3	2236.3158993274	Sum of GTIs [s]
ontime6	2459.2362378538	Sum of GTIs [s]
ontime7	5224.5191534758	Sum of GTIs [s]
l2events	1264114	Number of level 2 events

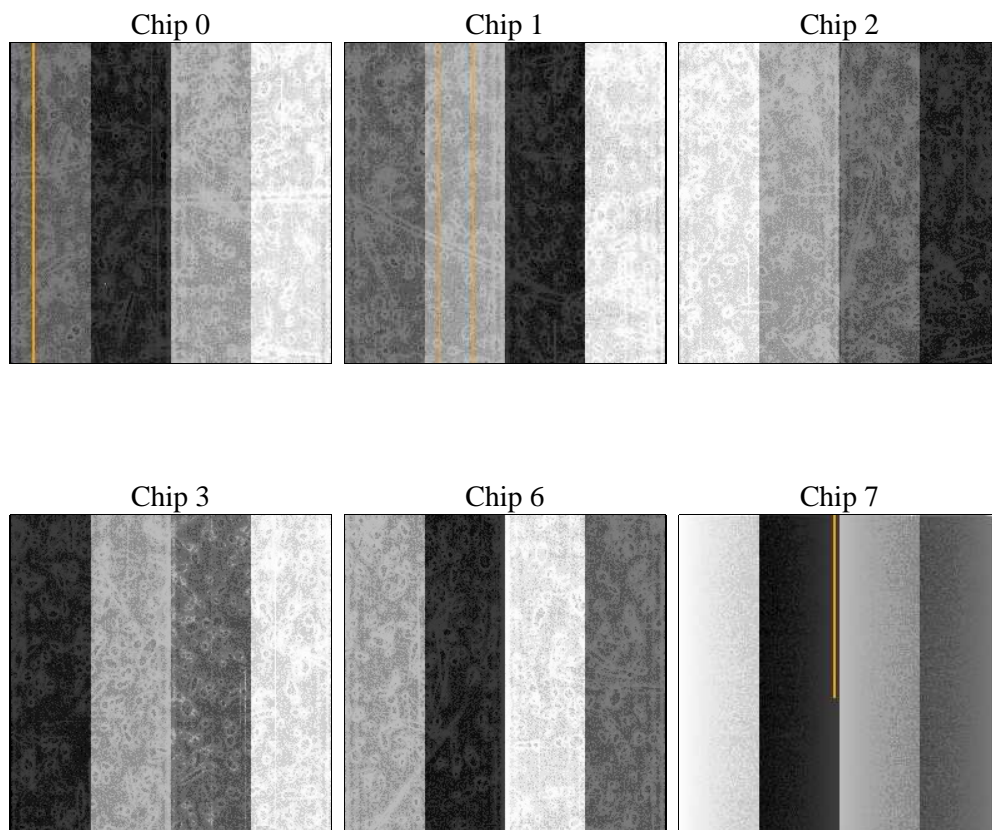
## 2 OBI

### 2.1 OBI

#### 2.1.1 Images



#### 2.1.2 Bias



### 2.1.3 Parameters

obi_num	0	Obi number	sched_exp_time	0.0	[s] Scheduled observation exposure time
ascdsver	8.4.5	Processing system revision	ontime	5224.5191534758	Sum of GTIs [s]
caldsver	4.5.1.1	&#160	ontime0	2369.1981900781	Sum of GTIs [s]
date	2012-09-05T12:34:07	Date and time of file creation	ontime1	2382.16242975	Sum of GTIs [s]
revision	3	Processing version of data	ontime2	2209.7174877971	Sum of GTIs [s]
			ontime3	2236.3158993274	Sum of GTIs [s]
			ontime6	2459.2362378538	Sum of GTIs [s]
			ontime7	5224.5191534758	Sum of GTIs [s]
			l1events	1431135	Number of level 1 events

### 2.1.4 Events

	ccd 0	ccd 1	ccd 2	ccd 3	ccd 6	ccd 7		ccd 0	ccd 1	ccd 2	ccd 3	ccd 6	ccd 7
level 1 events	197911	199857	189397	190973	216273	436724	grade 0 events	99698	100878	95336	96682	108364	107110
rejected events	17136	17106	18059	18270	18339	25039		50%	50%	50%	50%	50%	24%
rejected %	8%	8%	9%	9%	8%	5%	grade 1 events	528	506	471	498	478	274
								0%	0%	0%	0%	0%	0%
							grade 2 events	31977	32205	30293	30463	34124	91115
								16%	16%	15%	15%	15%	20%
							grade 3 events	11476	11571	10788	11061	12064	42092
								5%	5%	5%	5%	5%	9%
							grade 4 events	11397	11560	10727	10776	12077	42233
								5%	5%	5%	5%	5%	9%
							grade 5 events	1324	1347	1249	1340	1572	5678
								0%	0%	0%	0%	0%	1%
							grade 6 events	26227	26537	24194	23721	31305	129135
								13%	13%	12%	12%	14%	29%
							grade 7 events	15284	15253	16339	16432	16289	19087
								7%	7%	8%	8%	7%	4%

## 2.2 Compared Parameters

Parameter	Planned	Actual	Parameter	Planned	Actual
Instrument	ACIS	ACIS	Obspar format version number	7	7
Detector	ACIS-012367	ACIS-012367	Obspar file type	PREDICTED	ACTUAL
Grating	NONE	NONE	Obspar update status	NONE	UPDATED
Data mode	FAINT	FAINT	On-chip summing requested	N	N
Observation mode	SECONDARY	SECONDARY	Subarray requested	NONE	NONE
[deg] Pointing RA	0	15.77832140311663	Alternating exposures requested	N	N
[deg] Pointing Dec	0	24.37190765254844	[s] Primary exposure time	0.000000	3.2
[deg] Pointing Roll	0.0	143.735111677306			
[mm] SIM focus pos	-0.782348	-0.6828225247311905			
[mm] SIM defocus	0	0.8505141146731063			
[mm] SIM translation stage pos	-233.592463	250.466033080201			
[mm] SIM translation stage offset	0	-0.01005468664627074			
[s] Observation start time (MET)	85890420.42299999	85890419.65436			
Observation start date	2000-09-21T02:27:00	2000-09-21T02:26:59			
[s] Observation end time (MET)	85934772.17399999	85934771.406029			
Observation end date	2000-09-21T14:46:12	2000-09-21T14:46:11			
Read mode	TIMED	TIMED			

## **2.3 Star Slots**

## **2.4 FID Slots**

## A Summary

### A.1 Status

V&V Scientist	Beth Sundheim
V&V Date (YYYY-MM-DD)	2012.09.12
V&V Edition	1
V&V Disposition and Status	OK
V&V Charge Time	5.2245191534758

### A.2 Comments