

# V&V Reference Report

## L2 ASCDS Version : 7.6.10

Observation 61893 - L2 Version 001  
Chandra X-Ray Center

L2 Processing Date : Jun 9 2007

## Contents

<b>1</b>	<b>Front</b>	<b>2</b>
<b>2</b>	<b>OBI</b>	<b>3</b>
2.1	OBI . . . . .	3
2.1.1	Images . . . . .	3
2.1.2	Bias . . . . .	3
2.1.3	Parameters . . . . .	4
2.1.4	Events . . . . .	4
2.2	Compared Parameters . . . . .	5
2.3	Star Slots . . . . .	6
2.4	FID Slots . . . . .	6
<b>A</b>	<b>Summary</b>	<b>7</b>
A.1	Status . . . . .	7
A.2	Comments . . . . .	7

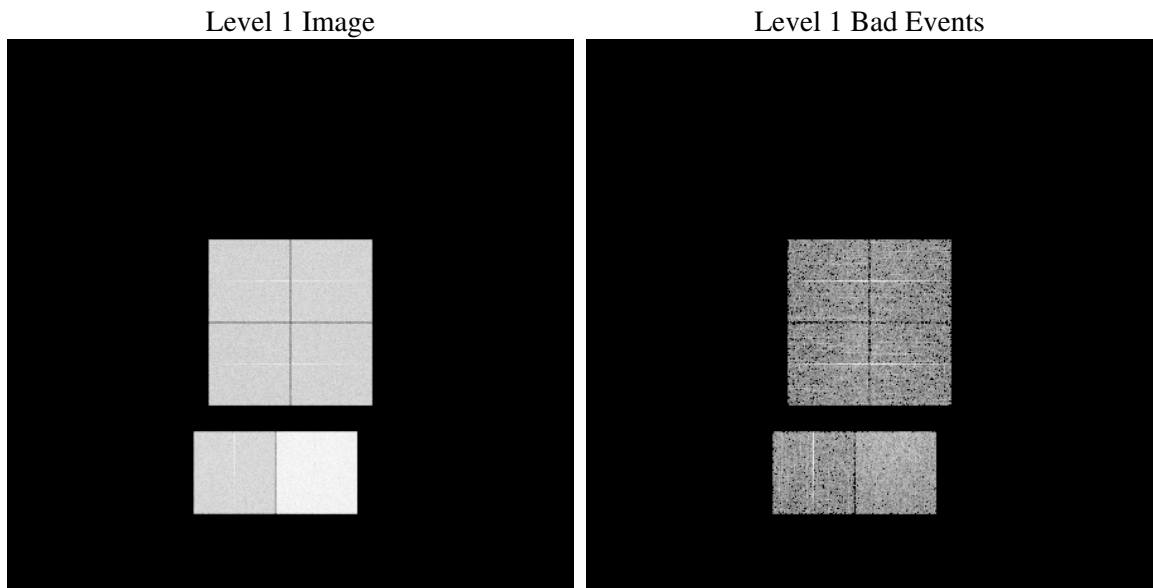
# 1 Front

seq_num	&#160
obs_id	61893
title	ACIS-012367 diagnostics
observer	CHANDRA engineering request/realtime commanding
object	&#160
dtcycle	0
cycle	P
ra_targ	0.0
dec_targ	0.0
ra_nom	154.09047140637
dec_nom	46.649752430155
roll_nom	42.886639214984
revision	2
ontime	5360.7118877321
livetime	5292.8313259765
ontime0	2298.0113535076
ontime1	2362.8732432723
ontime2	2181.4160337597
ontime3	2246.0726835877
ontime6	2449.9248197079
ontime7	5360.7118877321
l2events	1259891

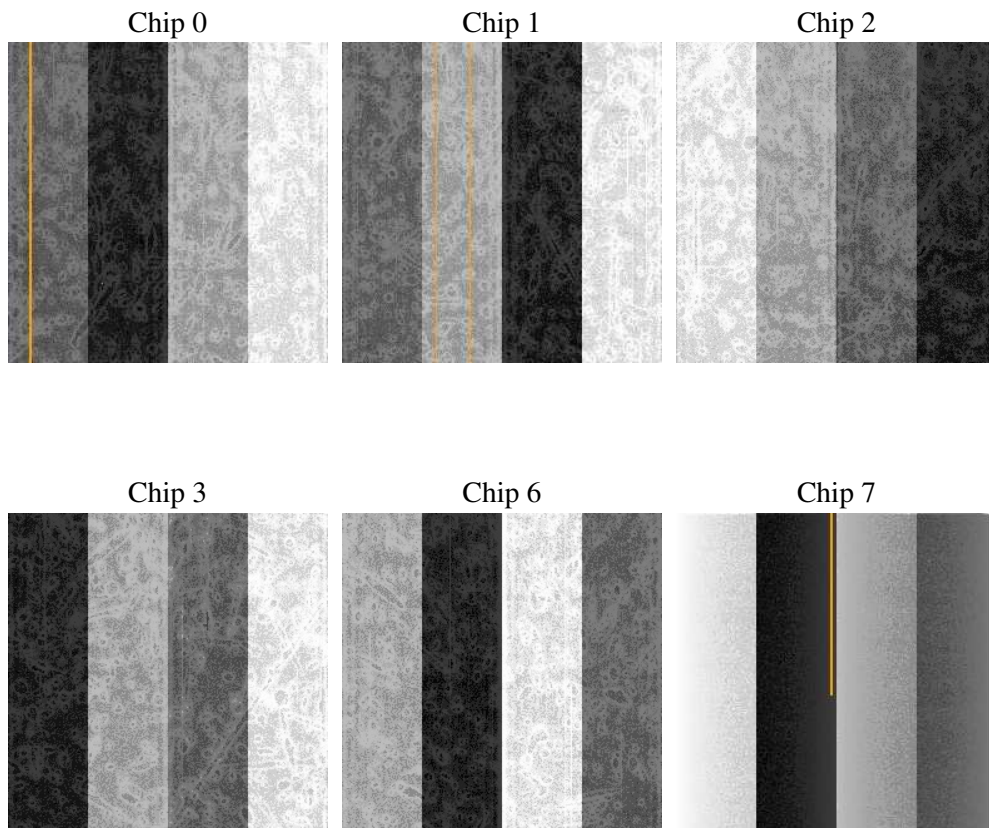
## 2 OBI

### 2.1 OBI

#### 2.1.1 Images



#### 2.1.2 Bias



### 2.1.3 Parameters

obi_num	0
ascdsver	7.6.10
caldsver	3.4.0
date	2007-06-10T00:08:53
revision	2

sched_exp_time	0.0
ontime	5360.7118877321
ontime0	2298.0113535076
ontime1	2362.8732432723
ontime2	2181.4160337597
ontime3	2246.0726835877
ontime6	2449.9248197079
ontime7	5360.7118877321
l1events	1430815

### 2.1.4 Events

	ccd 0	ccd 1	ccd 2	ccd 3	ccd 6	ccd 7
level 1 events	192460	197628	186110	191935	216147	446535
rejected events	18082	17725	18340	18444	19347	26554
rejected %	9%	8%	9%	9%	8%	5%

	ccd 0	ccd 1	ccd 2	ccd 3	ccd 6	ccd 7
grade 0 events	96249	99267	93516	96920	107488	108230
	50%	50%	50%	50%	49%	24%
grade 1 events	511	475	491	532	541	255
	0%	0%	0%	0%	0%	0%
grade 2 events	30557	31792	29526	30513	34143	93683
	15%	16%	15%	15%	15%	20%
grade 3 events	11105	11482	10691	11022	12067	43275
	5%	5%	5%	5%	5%	9%
grade 4 events	11002	11296	10353	11021	12044	42880
	5%	5%	5%	5%	5%	9%
grade 5 events	1354	1409	1287	1381	1638	5910
	0%	0%	0%	0%	0%	1%
grade 6 events	25707	26319	23951	24260	31319	132191
	13%	13%	12%	12%	14%	29%
grade 7 events	15975	15588	16295	16286	16907	20111
	8%	7%	8%	8%	7%	4%

## 2.2 Compared Parameters

Parameter	Planned	Actual	Parameter	Planned	Actual
Instrument	ACIS	ACIS	Obspar format version number	6	6
Detector	ACIS-012367	ACIS-012367	Obspar file type	PREDICTED	ACTUAL
Grating	NONE	NONE	Obspar update status	NONE	UPDATED
Data mode	FAINT	FAINT	On-chip summing requested	N	N
Observation mode	SECONDARY	SECONDARY	Subarray requested	NONE	NONE
Pointing RA	0	154.0904714063724	Alternating exposures requested	N	N
Pointing Dec	0	46.64975243015509	Primary exposure time	0.000000	3.2
Pointing Roll	0.0	42.88663921498441			
SIM focus pos (mm)	-0.782348	-0.7809083437167272			
SIM defocus (mm)	0	0.7524282956875696			
SIM translation stage pos (mm)	-233.592463	250.466033080201			
SIM translation stage offset (mm)	0	-0.01005468664627074			
Observation start time	87031598.066	87031597.297361			
Observation start date	2000-10-04T07:26:38	2000-10-04T07:26:37			
Observation end time	87075468.067	87075467.29902001			
Observation end date	2000-10-04T19:37:48	2000-10-04T19:37:47			
Read mode	TIMED	TIMED			

## **2.3 Star Slots**

## **2.4 FID Slots**

## A Summary

### A.1 Status

V&V Scientist	Beth Sundheim
V&V Date (YYYY-MM-DD)	2007.06.10
V&V Edition	1
V&V Disposition and Status	OK
V&V Charge Time	5.36071188

### A.2 Comments