

# V&V Reference Report

## L2 ASCDS Version : 7.6.7.1

Observation 6173 - L2 Version 002  
Chandra X-Ray Center

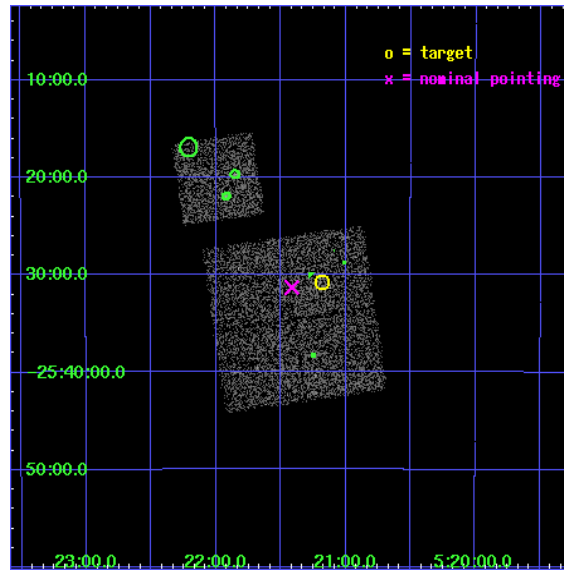
L2 Processing Date : Apr 7 2006

## Contents

<b>1</b>	<b>Front</b>	<b>2</b>
<b>2</b>	<b>OBI</b>	<b>3</b>
2.1	OBI . . . . .	3
2.1.1	Images . . . . .	3
2.1.2	Bias . . . . .	3
2.1.3	Parameters . . . . .	4
2.1.4	Events . . . . .	4
2.2	Compared Parameters . . . . .	5
2.3	Aspect . . . . .	6
2.4	Star Slots . . . . .	9
2.4.1	Slot 3 . . . . .	9
2.4.2	Slot 4 . . . . .	10
2.4.3	Slot 5 . . . . .	11
2.4.4	Slot 6 . . . . .	12
2.4.5	Slot 7 . . . . .	13
2.5	FID Slots . . . . .	14
2.5.1	Slot 0 . . . . .	14
2.5.2	Slot 1 . . . . .	15
2.5.3	Slot 2 . . . . .	16
<b>3</b>	<b>Point Sources</b>	<b>17</b>
<b>A</b>	<b>Summary</b>	<b>18</b>
A.1	Status . . . . .	18
A.2	Comments . . . . .	18

# 1 Front

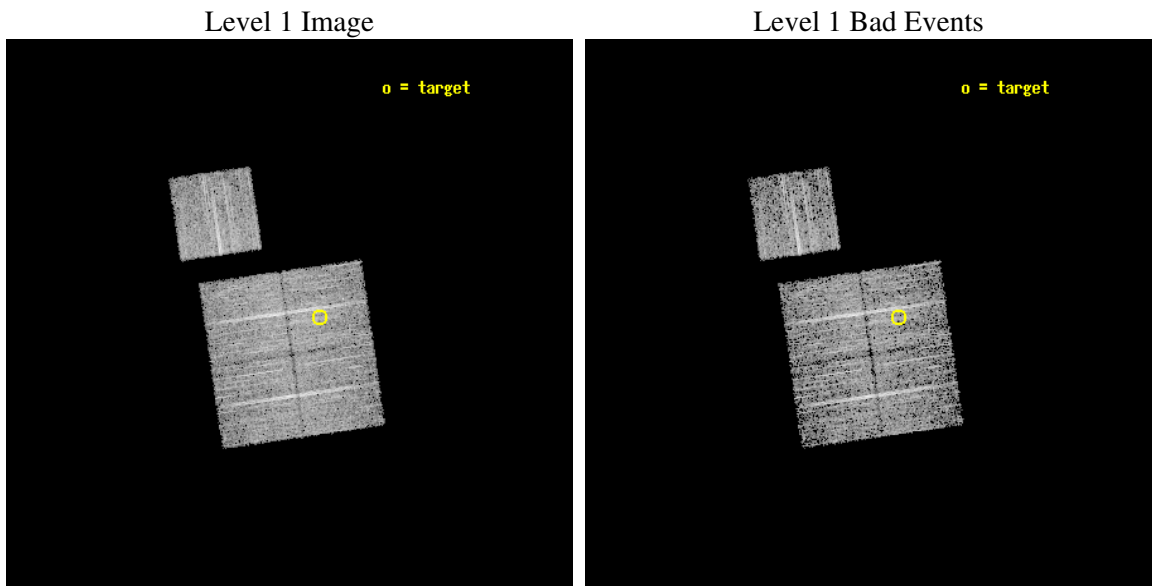
seq_num	800379
obs_id	6173
title	Chandra snapshot survey of 10 distant clusters of galaxies
observer	Dr. Stephen Murray
object	CL0521-2530
dtcycle	0
cycle	P
ra_targ	80.294583
dec_targ	-25.512222
ra_nom	80.353754396536
dec_nom	-25.521987260624
roll_nom	351.7340948768
revision	2
ontime	4941.399990499
livetime	4876.8369618174
ontime0	4941.399990499
ontime1	4941.399990499
ontime2	4938.2590102553
ontime3	4941.399990499
ontime6	4941.399990499
l2events	13404



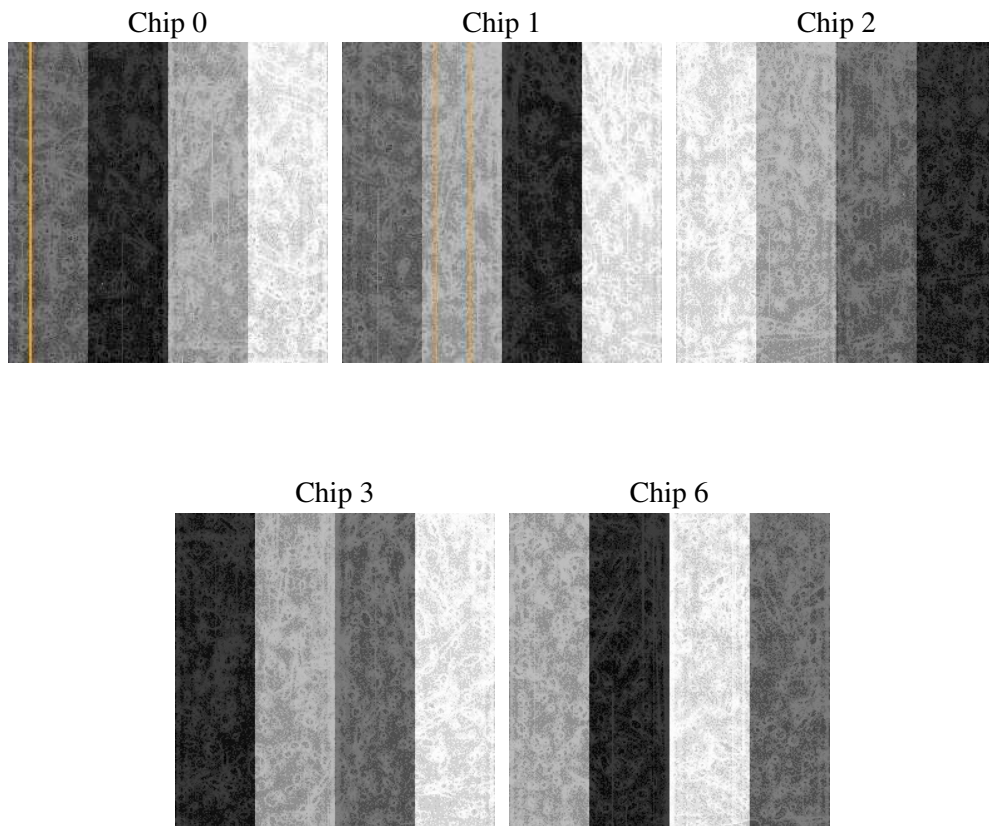
## 2 OBI

### 2.1 OBI

#### 2.1.1 Images



#### 2.1.2 Bias



### 2.1.3 Parameters

obi_num	1
ascdsver	7.6.7.1
caldbver	3.2.1
date	2006-04-07T07:22:39
revision	2

sched_exp_time	4766.134000
ontime	6077.8599438667
ontime0	6081.0009241104
ontime1	6081.0009340346
ontime2	6077.8599438667
ontime3	6077.8599438667
ontime6	6081.0009340346
l1events	199561

### 2.1.4 Events

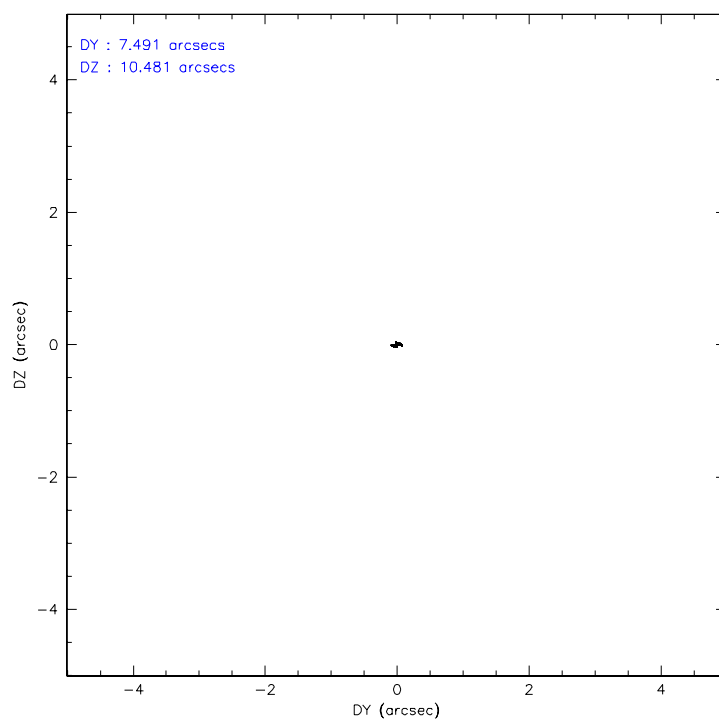
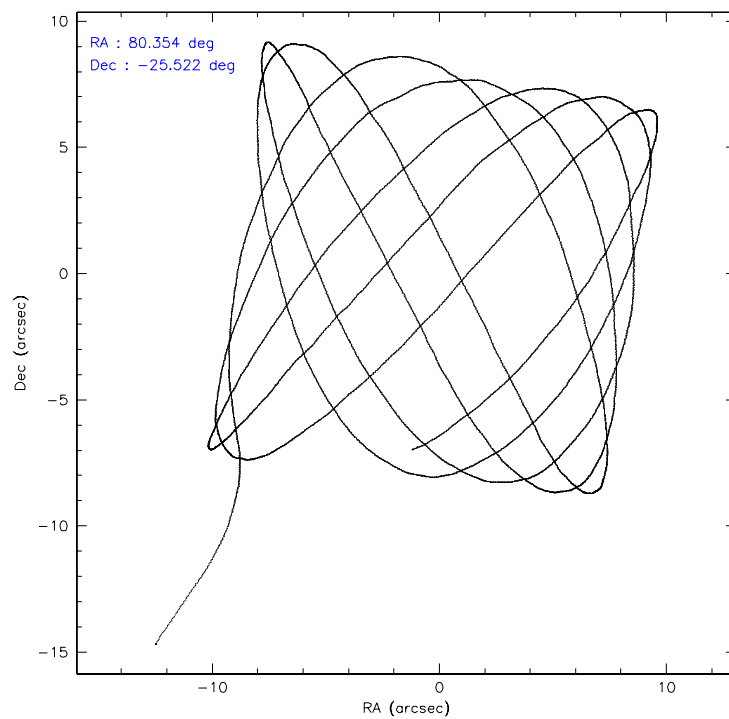
	ccd 0	ccd 1	ccd 2	ccd 3	ccd 6
level 1 events	37590	37200	42225	41061	41485
rejected events	34427	33814	39090	37902	38159
rejected %	91%	90%	92%	92%	91%

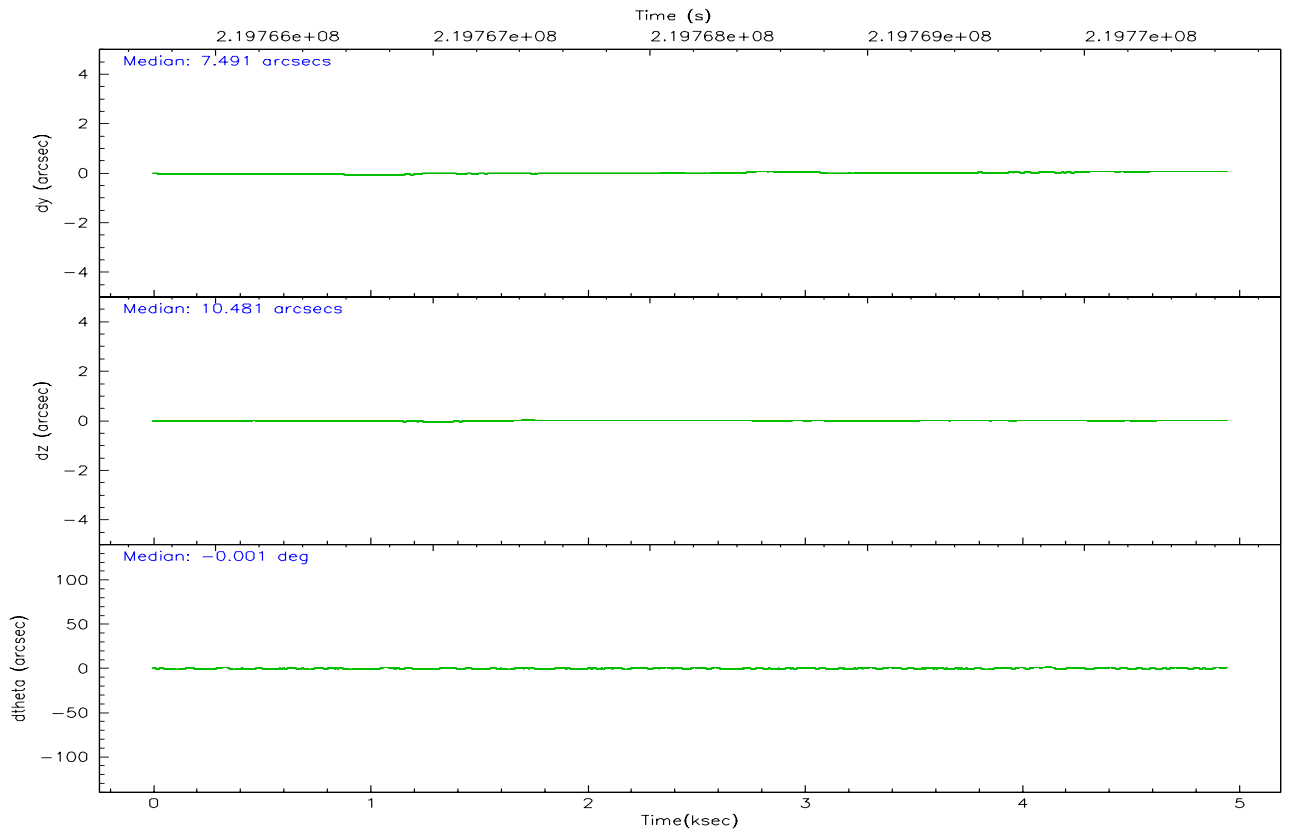
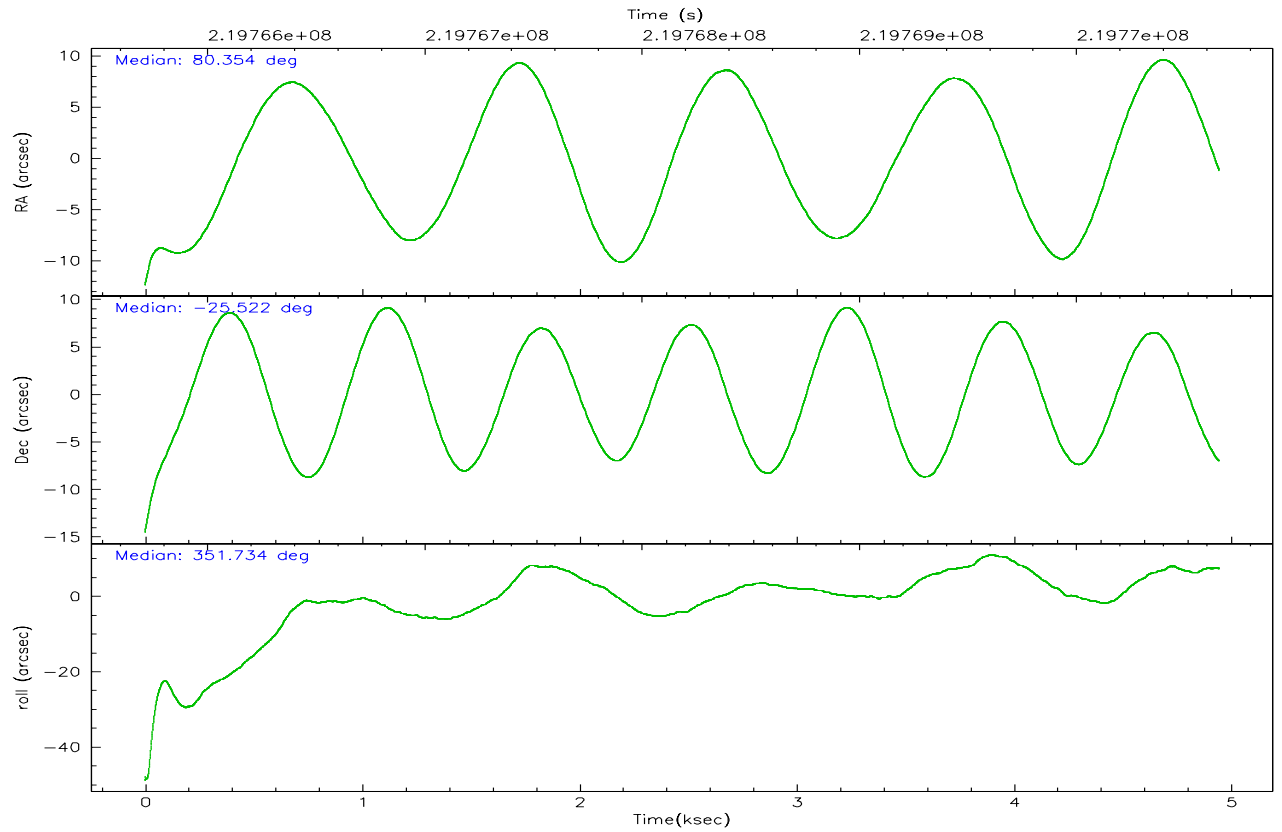
	ccd 0	ccd 1	ccd 2	ccd 3	ccd 6
grade 0 events	1346	1489	1378	1490	1439
	3%	4%	3%	3%	3%
grade 1 events	15	20	28	24	14
	0%	0%	0%	0%	0%
grade 2 events	901	901	942	762	813
	2%	2%	2%	1%	1%
grade 3 events	476	459	448	453	456
	1%	1%	1%	1%	1%
grade 4 events	417	490	454	437	458
	1%	1%	1%	1%	1%
grade 5 events	1337	1487	1299	1511	1511
	3%	3%	3%	3%	3%
grade 6 events	762	841	693	706	895
	2%	2%	1%	1%	2%
grade 7 events	32336	31513	36983	35678	35899
	86%	84%	87%	86%	86%

## 2.2 Compared Parameters

Parameter	Planned	Actual	Parameter	Planned	Actual
Instrument	ACIS	ACIS	Obspar format version number	6	6
Detector	ACIS-01236	ACIS-01236	Obspar file type	PREDICTED	ACTUAL
Grating	NONE	NONE	Obspar update status	NONE	UPDATED
Data mode	VFAINT	VFAINT	On-chip summing requested	N	N
Observation mode	POINTING	POINTING	Subarray requested	NONE	NONE
Pointing RA	80.325628	80.35375439653556	Alternating exposures requested	N	N
Pointing Dec	-25.532245	-25.52198726062421	Primary exposure time	0.000000	3.1
Pointing Roll	351.513361	351.734094876801			
SIM focus pos (mm)	-0.782348	-0.7809083437167272			
SIM defocus (mm)	0	0.001439871863259334			
SIM translation stage pos (mm)	-225.840463	-225.8433433320239			
SIM translation stage offset (mm)	-7.752	-7.749109670905796			
Observation start time	219765889.184000	219764331.43472			
Observation start date	2004-12-18T14:03:45	2004-12-18T13:38:51			
Observation end time	219770655.184000	219770886.82252			
Observation end date	2004-12-18T15:23:11	2004-12-18T15:28:06			
Read mode	TIMED	TIMED			

## 2.3 Aspect





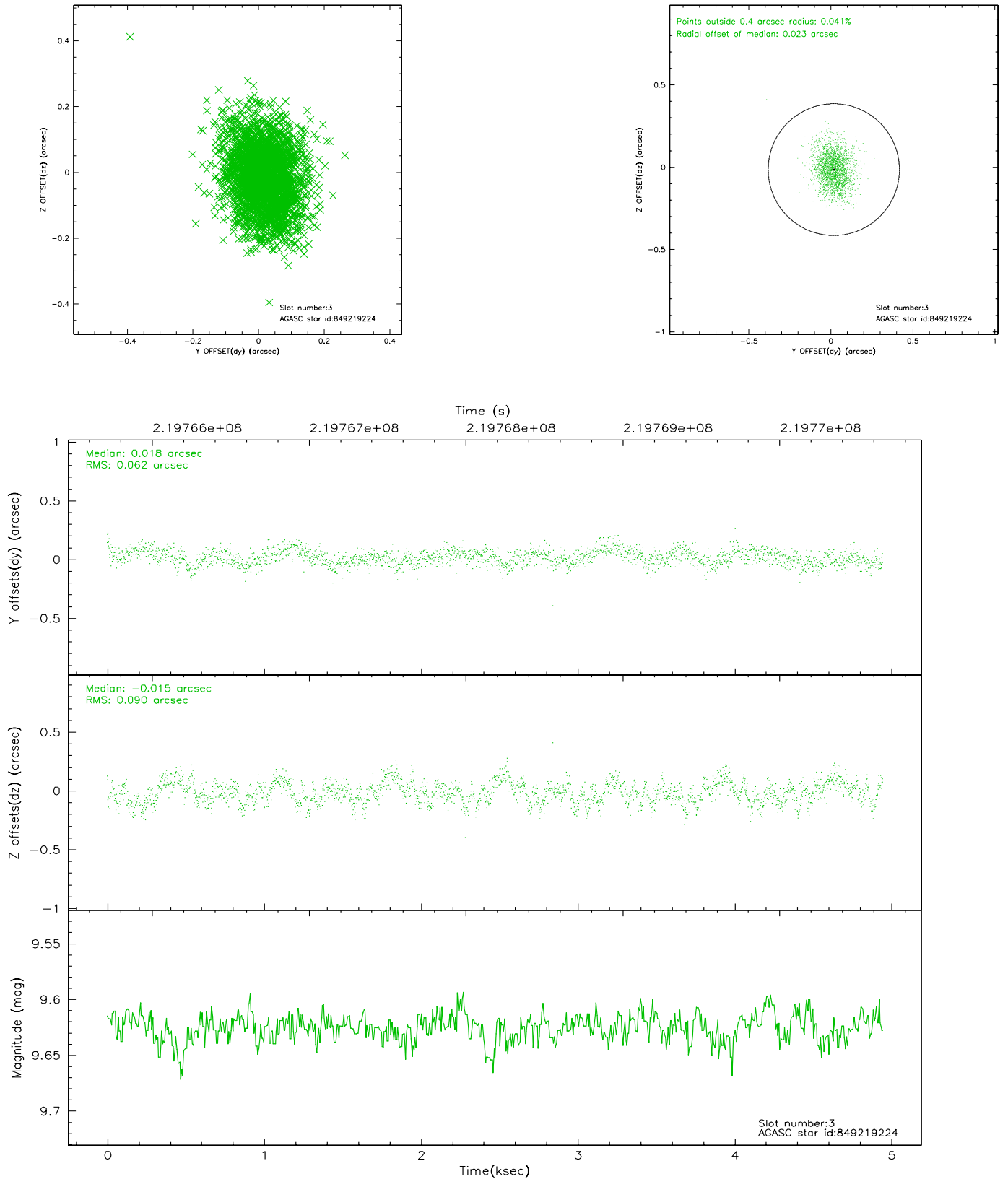
### Slot Statistics

slot	status	id	mag	n_pts	med_dy	med_dz	dr1	dr2	ra	dec	mean_y	mean_z
0	FID	ACIS-I-1	7.24	1207	0.085	-0.085	0.006	0.010	0.000000	0.000000	932.10	-993.14
1	FID	ACIS-I-5	7.22	1207	-0.190	0.084	0.006	0.010	0.000000	0.000000	-1815.57	903.80
2	FID	ACIS-I-6	7.25	1207	0.014	0.072	0.007	0.011	0.000000	0.000000	396.27	1549.67
3	GUIDE	849219224	9.63	2410	0.018	-0.015	0.113	0.192	79.917999	-26.007007	-1051.56	-1886.92
4	GUIDE	849223784	9.85	2411	0.043	-0.135	0.127	0.210	80.444618	-25.367658	295.34	642.25
5	GUIDE	849226272	8.39	2414	0.058	0.060	0.064	0.105	80.214822	-25.538553	-352.07	-75.15
6	BAD	849226688	5.45	1509	-0.056	0.138	0.044	0.072	79.879916	-25.124188	-1653.37	1235.84
7	GUIDE	849221808	9.98	2409	-0.080	0.007	0.123	0.202	81.008696	-25.199789	2024.46	1507.24

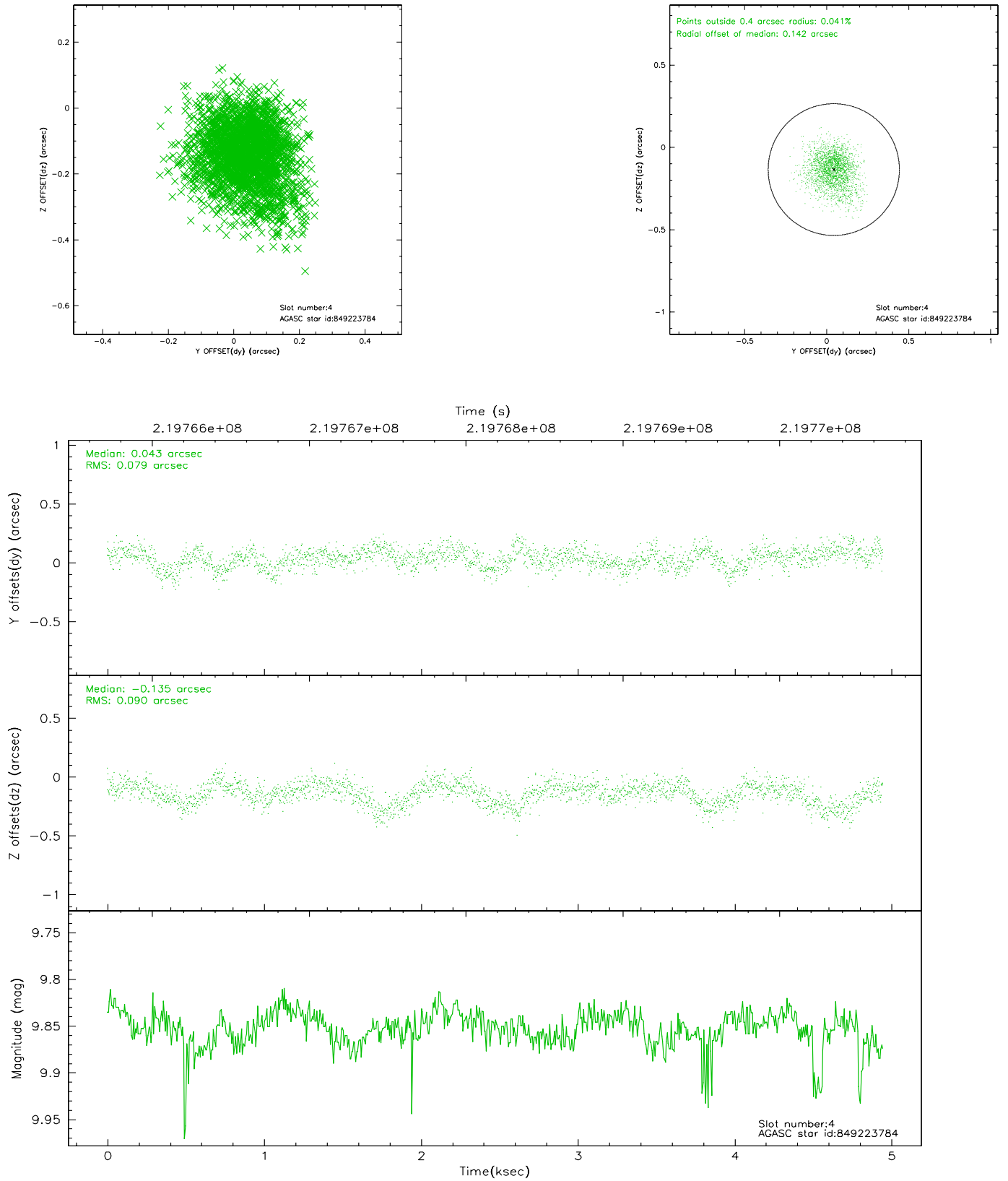


## 2.4 Star Slots

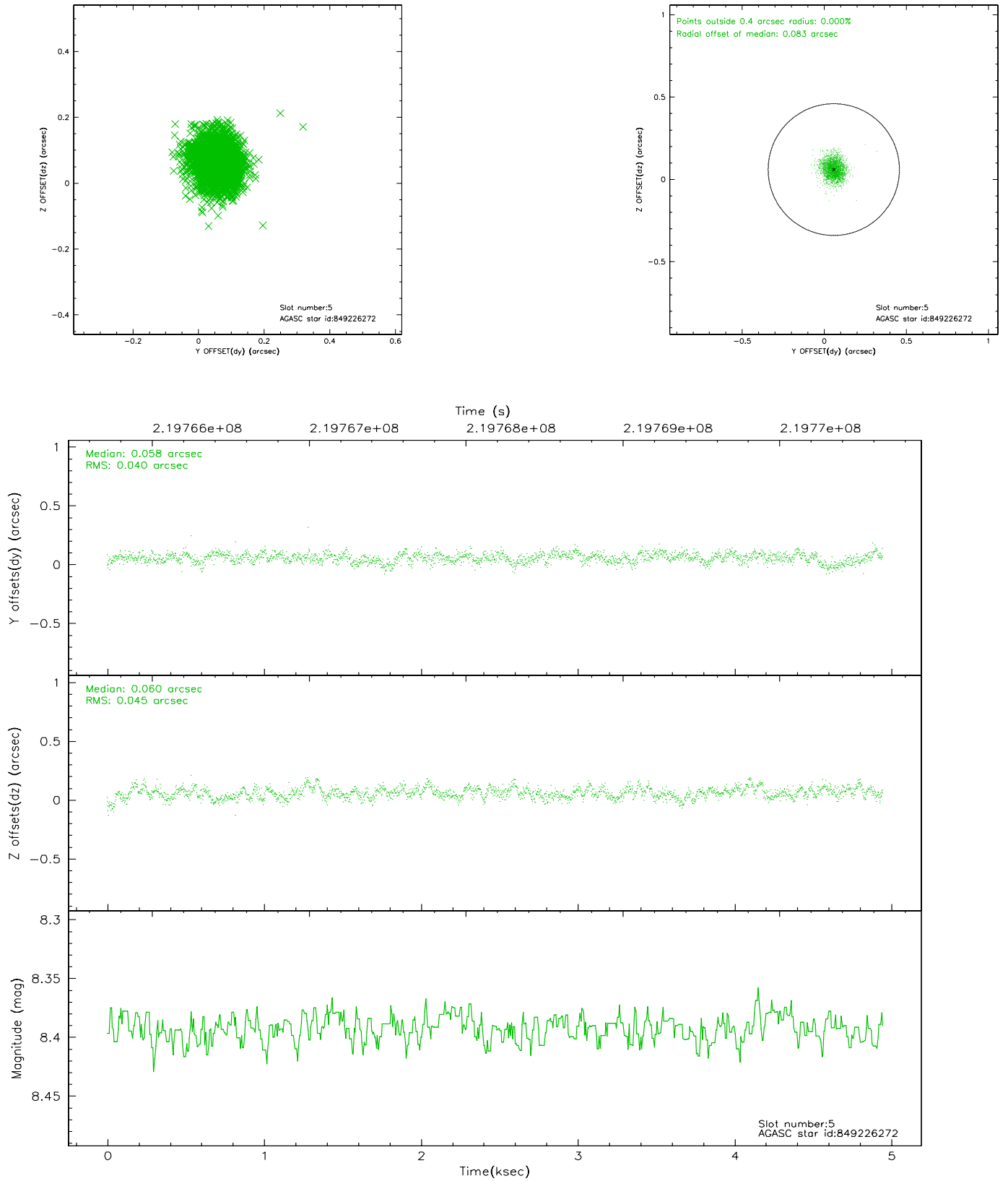
### 2.4.1 Slot 3



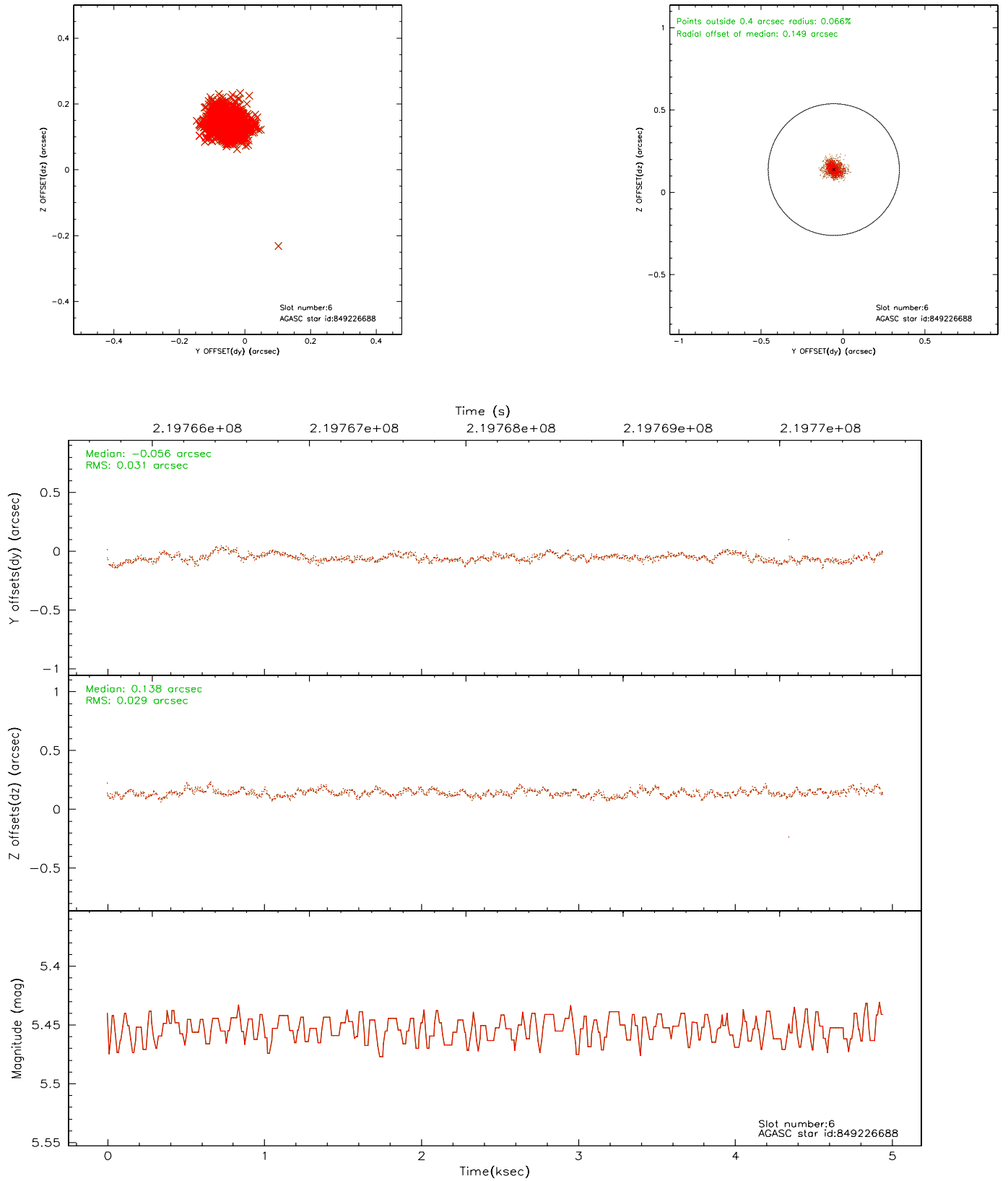
## 2.4.2 Slot 4



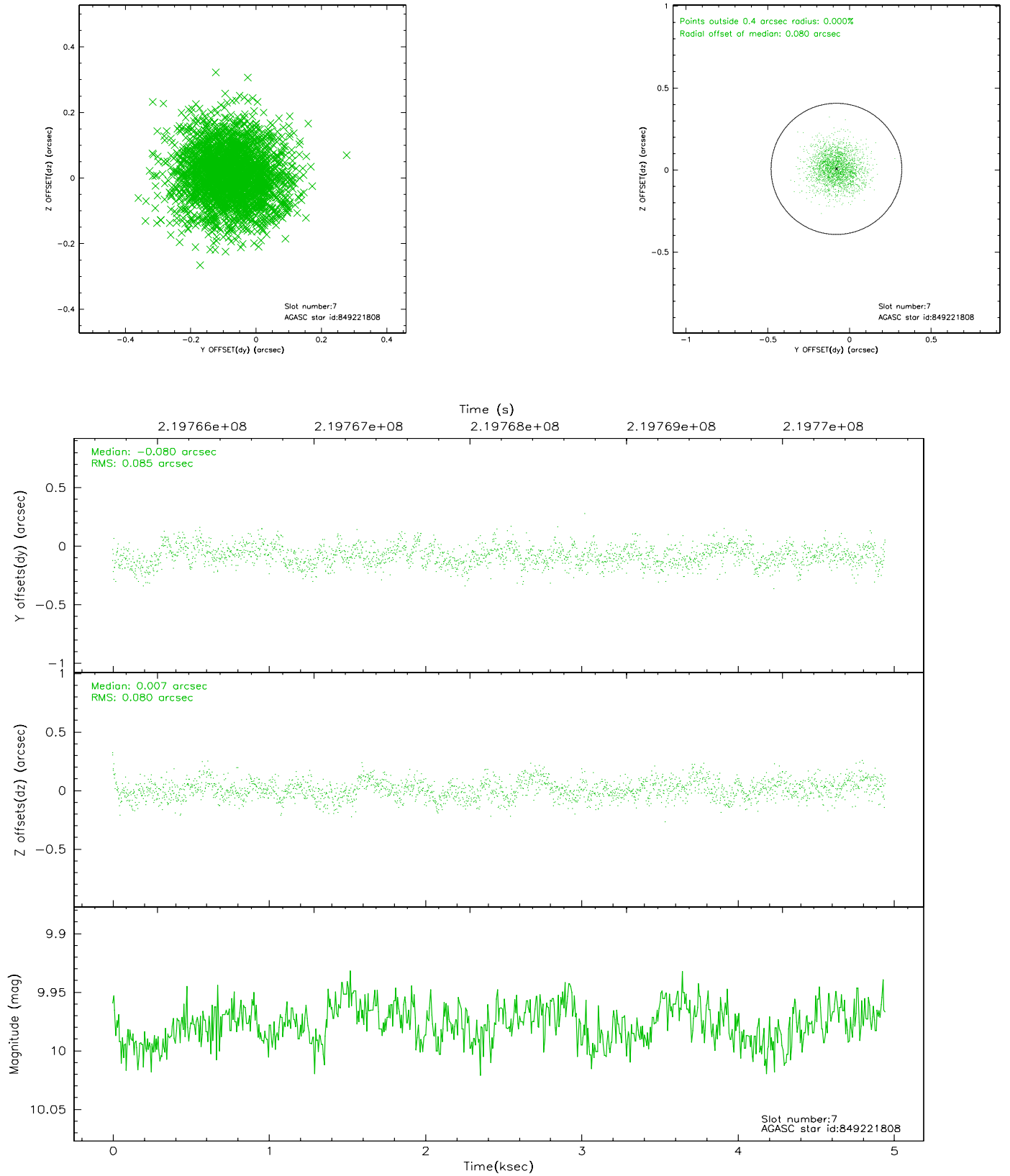
### 2.4.3 Slot 5



## 2.4.4 Slot 6

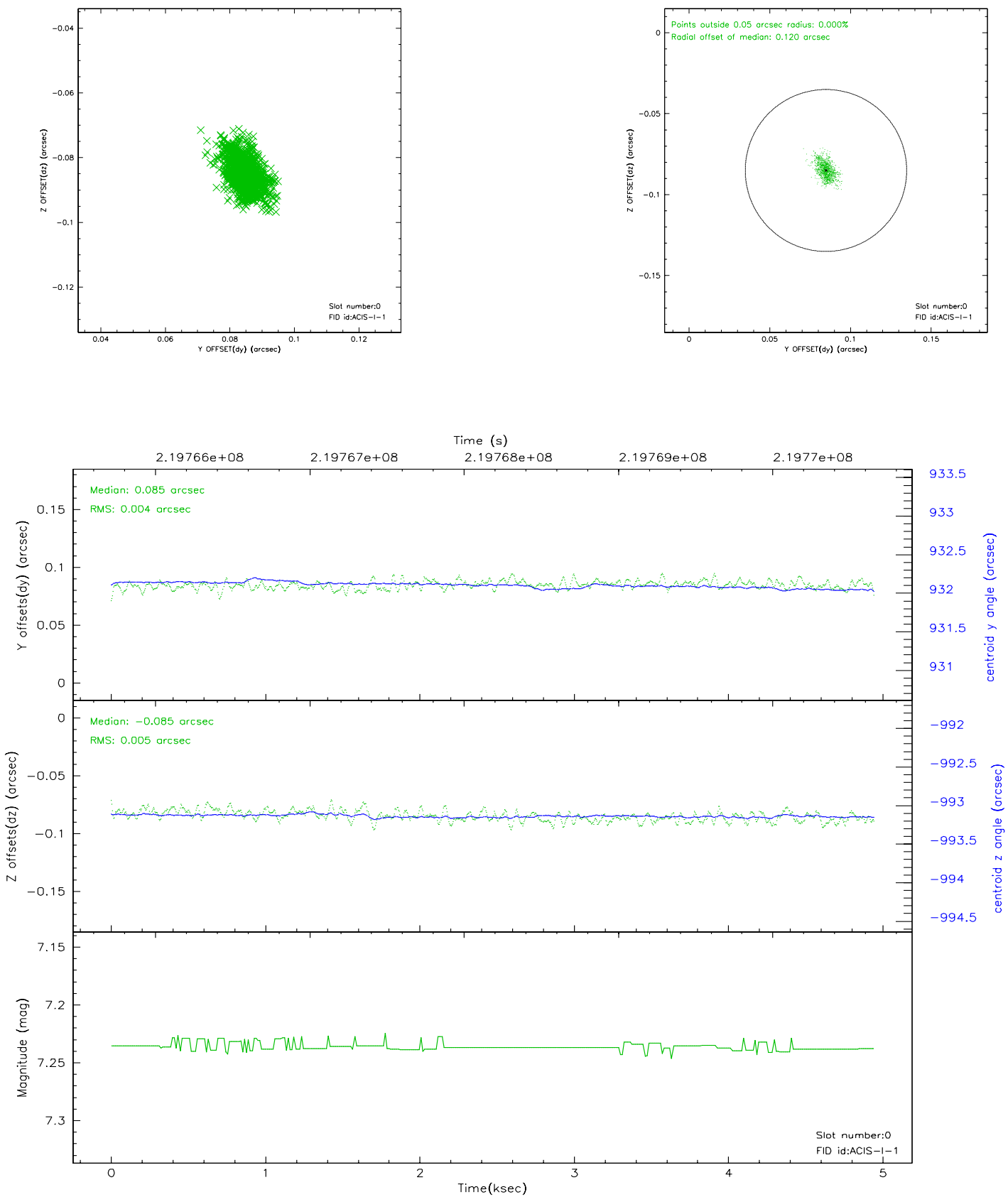


## 2.4.5 Slot 7

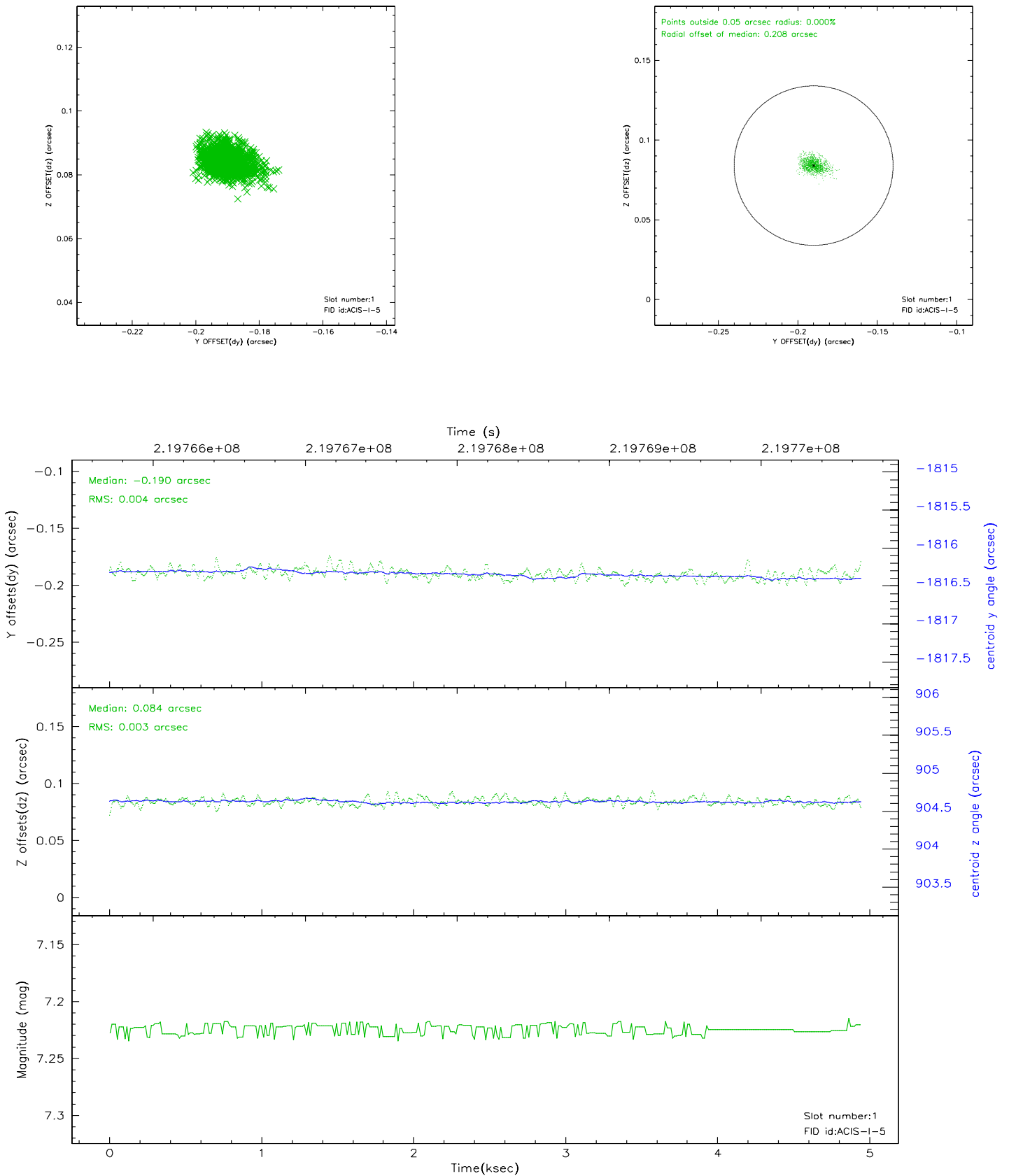


## 2.5 FID Slots

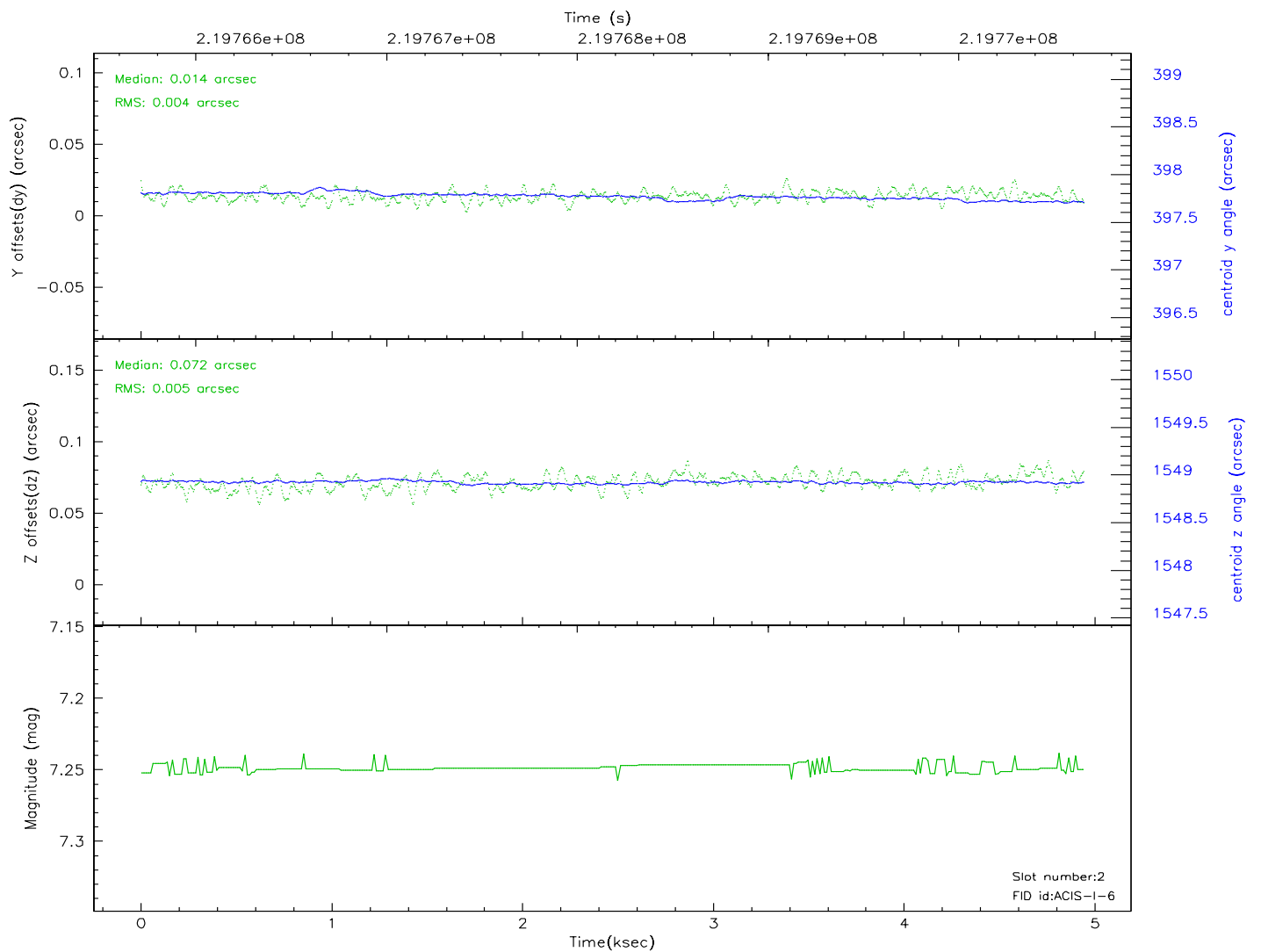
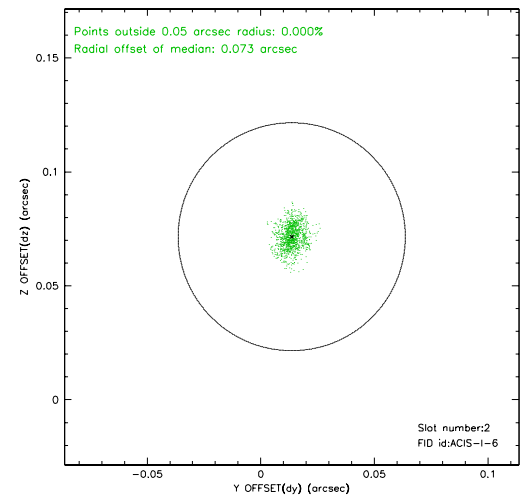
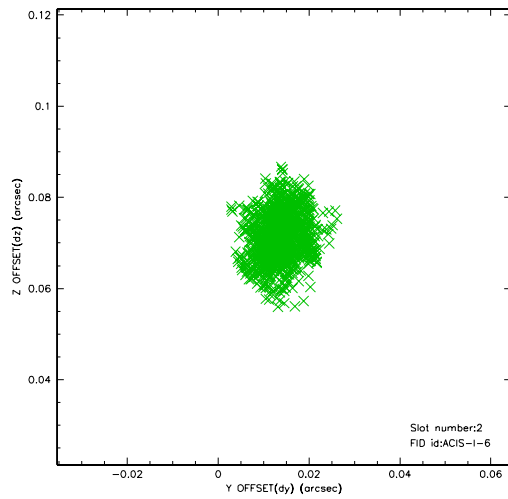
### 2.5.1 Slot 0



## 2.5.2 Slot 1

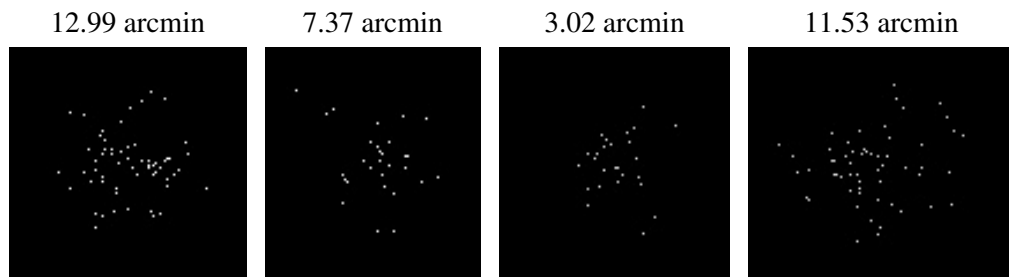


## 2.5.3 Slot 2





### 3 Point Sources



## A Summary

### A.1 Status

V&V Scientist	Beth Sundheim
V&V Date (YYYY-MM-DD)	2006.04.07
V&V Edition	1
V&V Disposition and Status	OK
V&V Charge Time	4.941399

### A.2 Comments

Slot 6 was not included in aspect solution.