

# V&V Reference Report

## L2 ASCDS Version : 8.4.5

Observation 61523 - L2 Version 3  
Chandra X-Ray Center

L2 Processing Date : Sep 21 2012

## Contents

<b>1</b>	<b>Front</b>	<b>2</b>
<b>2</b>	<b>OBI</b>	<b>3</b>
2.1	OBI . . . . .	3
2.1.1	Images . . . . .	3
2.1.2	Bias . . . . .	3
2.1.3	Parameters . . . . .	4
2.1.4	Events . . . . .	4
2.2	Compared Parameters . . . . .	5
2.3	Star Slots . . . . .	6
2.4	FID Slots . . . . .	6
<b>A</b>	<b>Summary</b>	<b>7</b>
A.1	Status . . . . .	7
A.2	Comments . . . . .	7

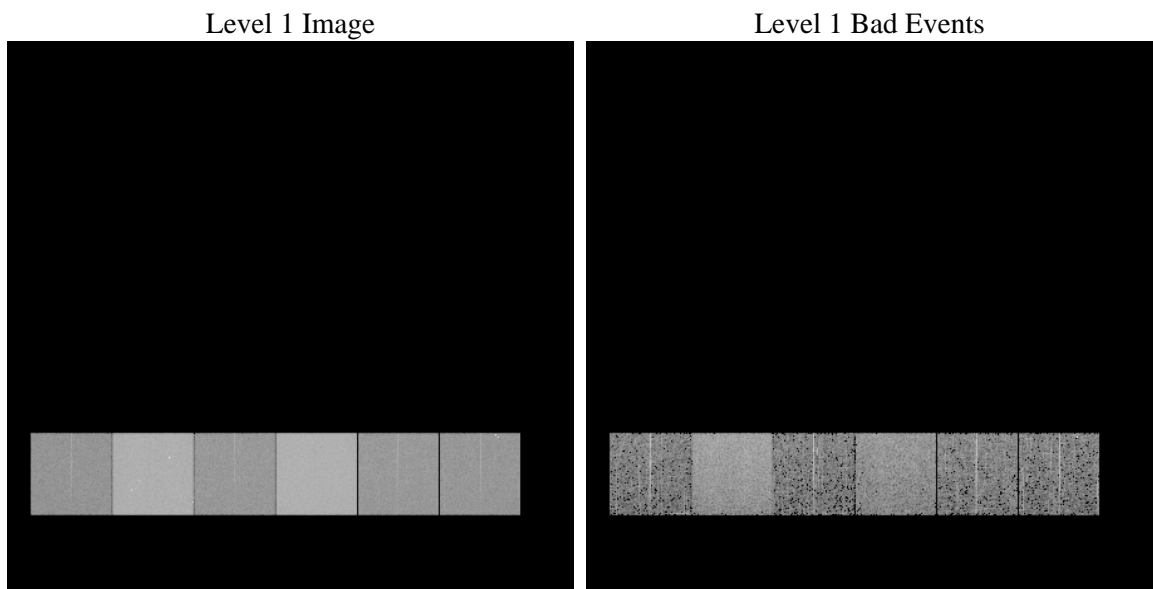
# 1 Front

seq_num	&#160	Sequence number
obs_id	61523	Observation id
title	ACIS-456789 diagnostics	Proposal title
observer	CHANDRA engineering request/realtime commanding	Principal investig
object	&#160	Source name
dtcycle	0	&#160
cycle	P	events from which exps? Prim/Second/Both
ra_targ	0.0	Observer's specified target RA [deg]
dec_targ	0.0	Observer's specified target Dec [deg]
ra_nom	280.01105225989	Nominal RA [deg]
dec_nom	-16.026598072688	Nominal Dec [deg]
roll_nom	259.11984415891	Nominal Roll [deg]
revision	3	Processing version of data
ontime	5621.9103345275	Sum of GTIs [s]
livetime	5550.7223207637	Livetime [s]
ontime4	2126.1201015562	Sum of GTIs [s]
ontime5	6028.2795109898	Sum of GTIs [s]
ontime6	2330.3054416031	Sum of GTIs [s]
ontime7	5621.9103345275	Sum of GTIs [s]
ontime8	2322.4103170782	Sum of GTIs [s]
ontime9	2265.4849009365	Sum of GTIs [s]
l2events	1219276	Number of level 2 events

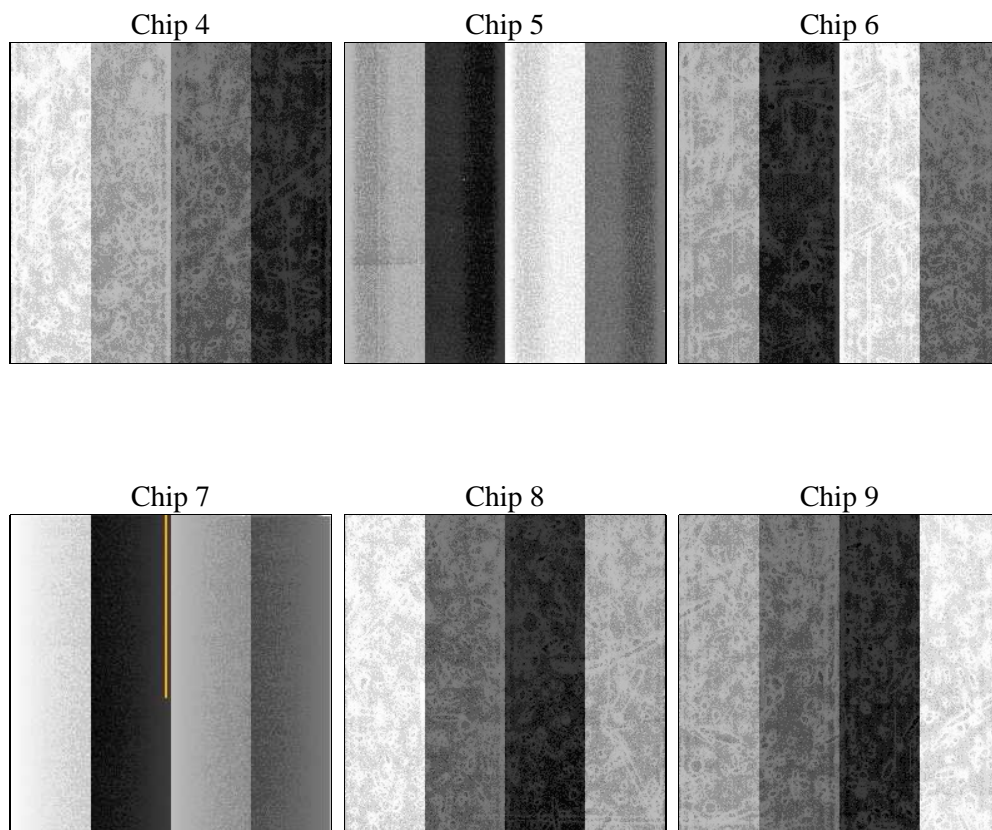
## 2 OBI

### 2.1 OBI

#### 2.1.1 Images



#### 2.1.2 Bias



### 2.1.3 Parameters

obi_num	2	Obi number	sched_exp_time	0.0	[s] Scheduled observation exposure time
ascdsver	8.4.5	Processing system revision	ontime	5621.9103345275	Sum of GTIs [s]
caldsver	4.5.1.1	&#160	ontime4	2126.1201015562	Sum of GTIs [s]
date	2012-09-21T13:17:33	Date and time of file creation	ontime5	6028.2795109898	Sum of GTIs [s]
revision	3	Processing version of data	ontime6	2330.3054416031	Sum of GTIs [s]
			ontime7	5621.9103345275	Sum of GTIs [s]
			ontime8	2322.4103170782	Sum of GTIs [s]
			ontime9	2265.4849009365	Sum of GTIs [s]
			l1events	1427093	Number of level 1 events

### 2.1.4 Events

	ccd 4	ccd 5	ccd 6	ccd 7	ccd 8	ccd 9		ccd 4	ccd 5	ccd 6	ccd 7	ccd 8	ccd 9
level 1 events	146270	382065	170394	392678	172722	162964	grade 0 events	71932	84449	82806	93328	83433	78378
rejected events	19131	43635	18796	30192	20989	19486		49%	22%	48%	23%	48%	48%
rejected %	13%	11%	11%	7%	12%	11%	grade 1 events	452	226	385	242	442	439
								0%	0%	0%	0%	0%	0%
							grade 2 events	22421	119387	26096	80143	26612	26237
								15%	31%	15%	20%	15%	16%
							grade 3 events	7703	22346	9222	36860	9553	8664
								5%	5%	5%	9%	5%	5%
							grade 4 events	7938	21915	9445	36675	9602	8761
								5%	5%	5%	9%	5%	5%
							grade 5 events	1192	8442	1459	6319	1611	1465
								0%	2%	0%	1%	0%	0%
							grade 6 events	17145	90333	24029	115480	22533	21438
								11%	23%	14%	29%	13%	13%
							grade 7 events	17487	34967	16952	23631	18936	17582
								11%	9%	9%	6%	10%	10%

## 2.2 Compared Parameters

Parameter	Planned	Actual
Instrument	ACIS	ACIS
Detector	ACIS-456789	ACIS-456789
Grating	NONE	NONE
Data mode	FAINT	FAINT
Observation mode	SECONDARY	SECONDARY
[deg] Pointing RA	0	280.0110522598901
[deg] Pointing Dec	0	-16.02659807268834
[deg] Pointing Roll	0.0	259.119844158909
[mm] SIM focus pos	-0.684267	-1.428180813131781
[mm] SIM defocus	0	0.1051558262725154
[mm] SIM translation stage pos	-190.132523	250.4635187648994
[mm] SIM translation stage offset	0	-0.007540371344731511
[s] Observation start time (MET)	112622161.102	112622160.33377
Observation start date	2001-07-27T11:56:01	2001-07-27T11:56:00
[s] Observation end time (MET)	112631757.153	112631756.38414
Observation end date	2001-07-27T14:35:57	2001-07-27T14:35:56
Read mode	TIMED	TIMED

Parameter	Planned	Actual
Obspar format version number	7	7
Obspar file type	PREDICTED	ACTUAL
Obspar update status	NONE	UPDATED
On-chip summing requested	N	N
Subarray requested	NONE	NONE
Alternating exposures requested	N	N
[s] Primary exposure time	0.000000	3.2

## **2.3 Star Slots**

## **2.4 FID Slots**

## A Summary

### A.1 Status

V&V Scientist	Jen Lauer
V&V Date (YYYY-MM-DD)	2012.09.25
V&V Edition	1
V&V Disposition and Status	OK
V&V Charge Time	5.6219103345275

### A.2 Comments