

V&V Reference Report

L2 ASCDS Version : 7.6.9

Observation 61523 - L2 Version 001
Chandra X-Ray Center

L2 Processing Date : Dec 16 2006

Contents

1	Front	2
2	OBI	3
2.1	OBI	3
2.1.1	Images	3
2.1.2	Bias	3
2.1.3	Parameters	4
2.1.4	Events	4
2.2	Compared Parameters	5
2.3	Aspect	6
2.4	Star Slots	8
2.5	FID Slots	8
A	Summary	9
A.1	Status	9
A.2	Comments	9

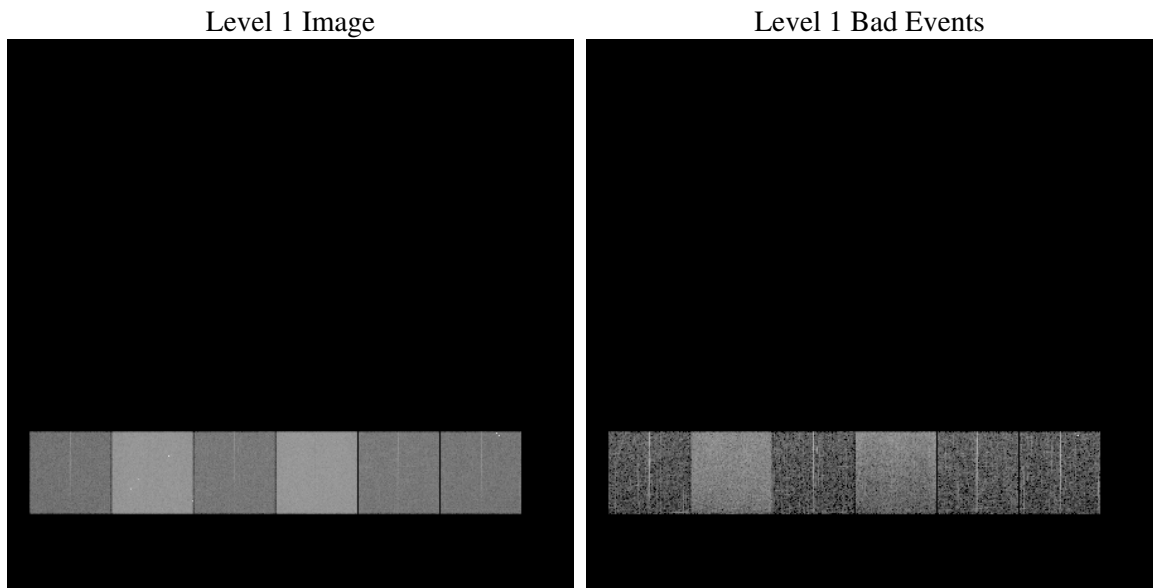
1 Front

seq_num	
obs_id	61523
title	ACIS-456789 diagnostics
observer	CHANDRA engineering request/realtime commanding
object	
dtcycle	0
cycle	P
ra_targ	0.0
dec_targ	0.0
ra_nom	280.01105225989
dec_nom	-16.026598072688
roll_nom	259.11984415891
revision	2
ontime	5622.5403597057
livetime	5551.3443681837
ontime4	2125.6240332127
ontime5	6027.7013626546
ontime6	2329.7683332562
ontime7	5622.5403597057
ontime8	2323.368662253
ontime9	2264.8246725947
l2events	1199631

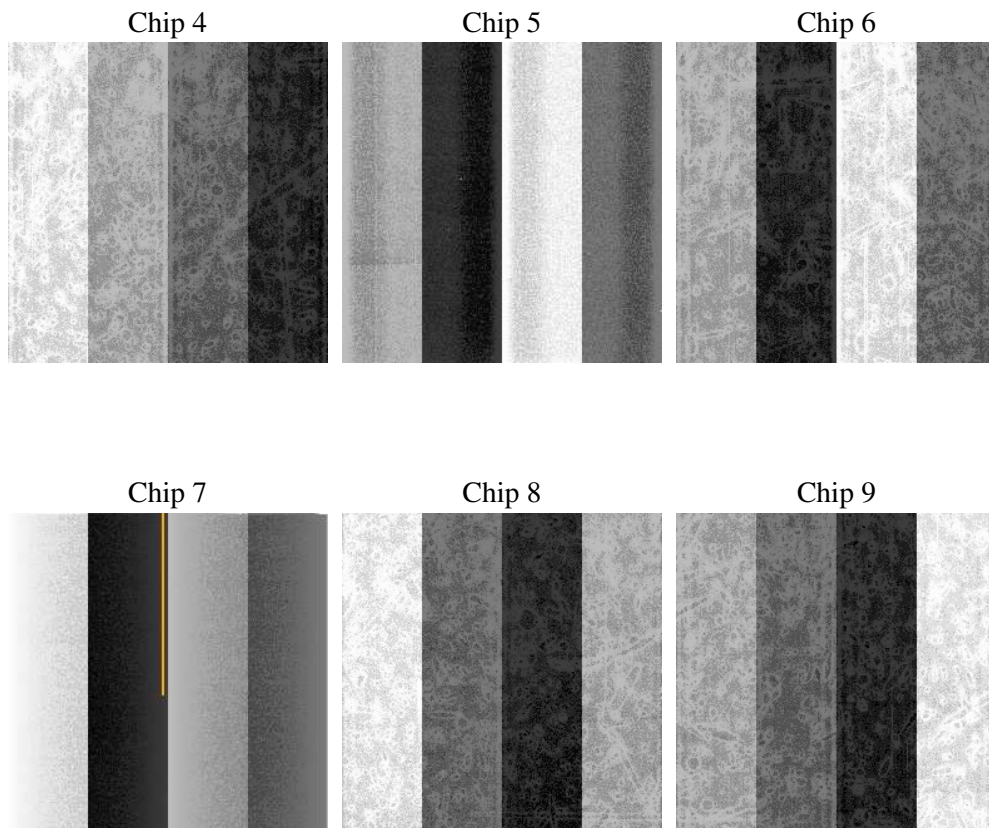
2 OBI

2.1 OBI

2.1.1 Images



2.1.2 Bias



2.1.3 Parameters

obi_num	2
ascdsver	7.6.9
caldsver	3.2.4
date	2006-12-16T05:07:36
revision	2

sched_exp_time	0.0
ontime	5623.1595480442
ontime4	2126.1201015562
ontime5	6028.2795109898
ontime6	2330.3054416031
ontime7	5623.1595480442
ontime8	2323.8236905932
ontime9	2265.4849009365
l1events	1427093

2.1.4 Events

	ccd 4	ccd 5	ccd 6	ccd 7	ccd 8	ccd 9
level 1 events	146270	382065	170394	392678	172722	162964
rejected events	19131	53197	18796	41316	20989	19486
rejected %	13%	13%	11%	10%	12%	11%

	ccd 4	ccd 5	ccd 6	ccd 7	ccd 8	ccd 9
grade 0 events	71934	42389	82806	67752	83433	78378
	49%	11%	48%	17%	48%	48%
grade 1 events	452	105	385	154	442	439
	0%	0%	0%	0%	0%	0%
grade 2 events	22419	157061	26096	103798	26612	26237
	15%	41%	15%	26%	15%	16%
grade 3 events	7703	11616	9222	27142	9553	8664
	5%	3%	5%	6%	5%	5%
grade 4 events	7938	11387	9445	26807	9602	8761
	5%	2%	5%	6%	5%	5%
grade 5 events	1192	6409	1459	5890	1611	1465
	0%	1%	0%	1%	0%	0%
grade 6 events	17145	106415	24029	125863	22533	21438
	11%	27%	14%	32%	13%	13%
grade 7 events	17487	46683	16952	35272	18936	17582
	11%	12%	9%	8%	10%	10%

2.2 Compared Parameters

Parameter	Planned	Actual	Parameter	Planned	Actual
Instrument	ACIS	ACIS	Obspar format version number	6	6
Detector	ACIS-456789	ACIS-456789	Obspar file type	PREDICTED	ACTUAL
Grating	NONE	NONE	Obspar update status	NONE	UPDATED
Data mode	FAINT	FAINT	On-chip summing requested	N	N
Observation mode	SECONDARY	SECONDARY	Subarray requested	NONE	NONE
Pointing RA	0	280.0110522598901	Alternating exposures requested	N	N
Pointing Dec	0	-16.0265980726883	Primary exposure time	0.000000	3.2
Pointing Roll	0.0	259.119844158909			
SIM focus pos (mm)	-0.684267	-1.428180813131781			
SIM defocus (mm)	0	0.1051558262725154			
SIM translation stage pos (mm)	-190.132523	250.4635187648994			
SIM translation stage offset (mm)	0	-0.007540371344731511			
Observation start time	112622161.102	112622160.33377			
Observation start date	2001-07-27T11:56:01	2001-07-27T11:56:00			
Observation end time	112631757.153	112631756.38414			
Observation end date	2001-07-27T14:35:57	2001-07-27T14:35:56			
Read mode	TIMED	TIMED			

2.3 Aspect

2.4 Star Slots

2.5 FID Slots

A Summary

A.1 Status

V&V Scientist	Beth Sundheim
V&V Date (YYYY-MM-DD)	2006.12.17
V&V Edition	1
V&V Disposition and Status	OK
V&V Charge Time	5.62254035

A.2 Comments