

V&V Reference Report

L2 ASCDS Version : 7.6.9

Observation 61443 - L2 Version 001
Chandra X-Ray Center

L2 Processing Date : Jan 5 2007

Contents

1	Front	2
2	OBI	3
2.1	OBI	3
2.1.1	Images	3
2.1.2	Bias	3
2.1.3	Parameters	4
2.1.4	Events	4
2.2	Compared Parameters	5
2.3	Aspect	6
2.4	Star Slots	8
2.5	FID Slots	8
A	Summary	9
A.1	Status	9
A.2	Comments	9

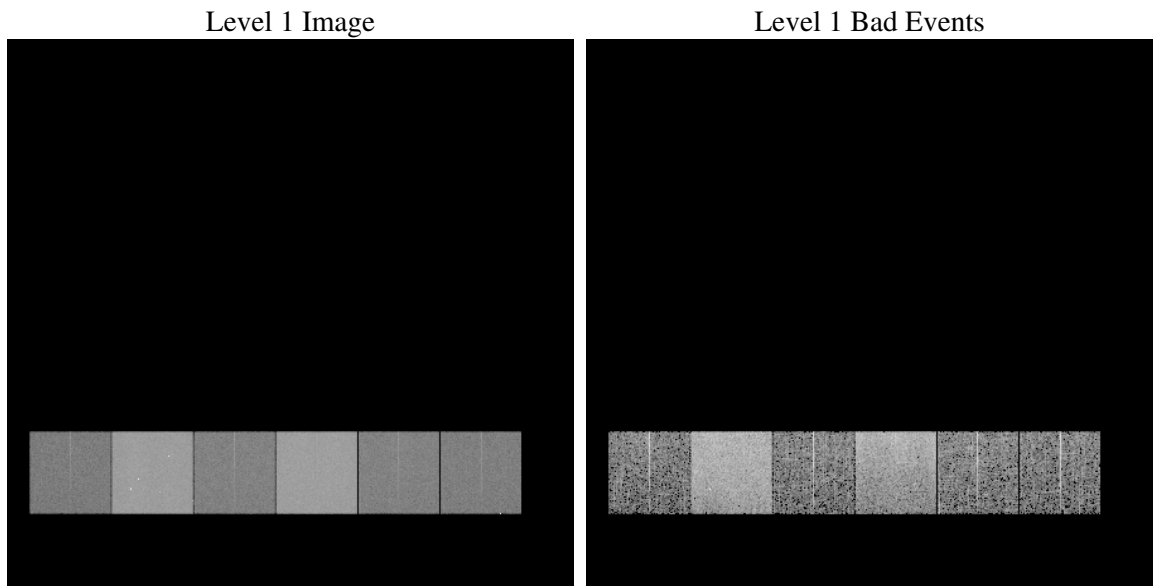
1 Front

seq_num	
obs_id	61443
title	ACIS-456789 diagnostics
observer	CHANDRA engineering request/realtime commanding
object	
dtcycle	0
cycle	P
ra_targ	0.0
dec_targ	0.0
ra_nom	307.02691962903
dec_nom	-35.018241460265
roll_nom	287.68396539042
revision	2
ontime	5871.3260557503
livetime	5796.9797899442
ontime4	2364.6941780746
ontime5	6289.4509684294
ontime6	2555.8744577914
ontime7	5871.3260557503
ontime8	2575.4025882334
ontime9	2455.2792176157
l2events	1209459

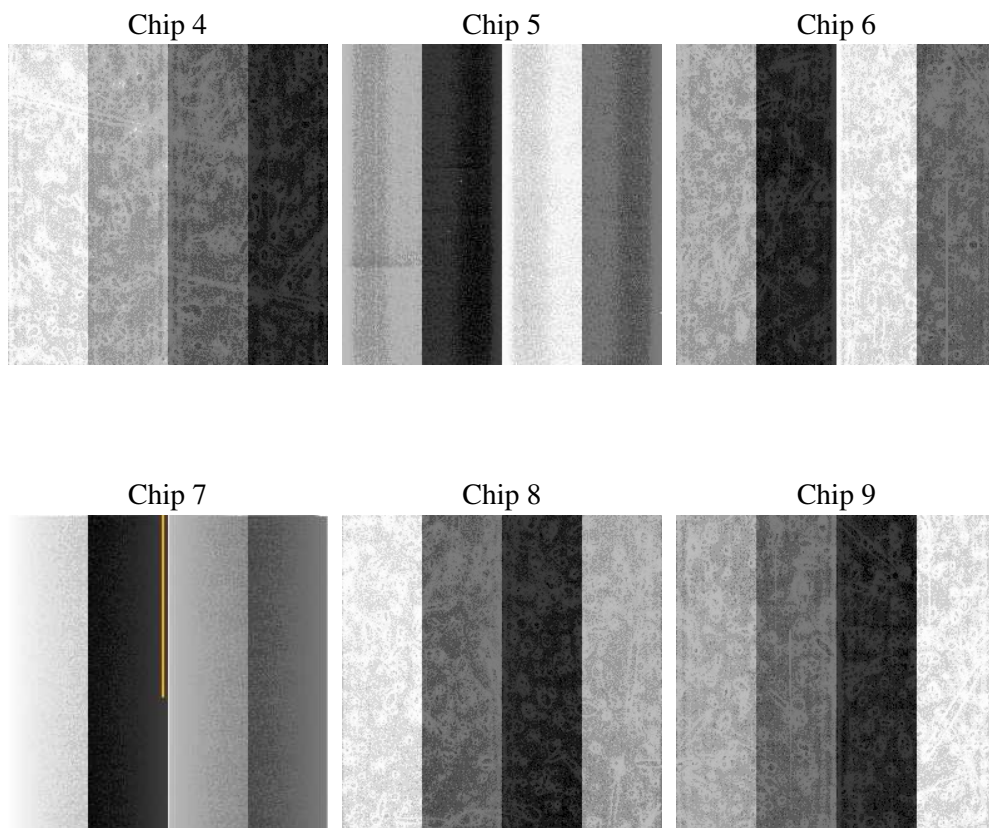
2 OBI

2.1 OBI

2.1.1 Images



2.1.2 Bias



2.1.3 Parameters

obi_num	0
ascdsver	7.6.9
caldbver	3.2.4
date	2007-01-05T20:14:52
revision	2

sched_exp_time	0.0
ontime	5872.7116995007
ontime4	2365.95670183
ontime5	6290.7955721766
ontime6	2557.1780215502
ontime7	5872.7116995007
ontime8	2576.6240719855
ontime9	2456.7059013695
l1events	1424221

2.1.4 Events

	ccd 4	ccd 5	ccd 6	ccd 7	ccd 8	ccd 9
level 1 events	150760	373831	175905	383467	177357	162901
rejected events	16982	49395	18297	37596	19234	17338
rejected %	11%	13%	10%	9%	10%	10%

	ccd 4	ccd 5	ccd 6	ccd 7	ccd 8	ccd 9
grade 0 events	75869	45236	86223	67724	87154	80560
	50%	12%	49%	17%	49%	49%
grade 1 events	397	232	411	146	406	378
	0%	0%	0%	0%	0%	0%
grade 2 events	23565	152592	27331	101461	27894	25617
	15%	40%	15%	26%	15%	15%
grade 3 events	8058	11976	9590	27316	9887	8915
	5%	3%	5%	7%	5%	5%
grade 4 events	8282	11759	9716	26784	10123	8899
	5%	3%	5%	6%	5%	5%
grade 5 events	1074	6147	1422	5396	1504	1357
	0%	1%	0%	1%	0%	0%
grade 6 events	18070	102873	24748	122586	23065	21572
	11%	27%	14%	31%	13%	13%
grade 7 events	15445	43016	16464	32054	17324	15603
	10%	11%	9%	8%	9%	9%

2.2 Compared Parameters

Parameter	Planned	Actual	Parameter	Planned	Actual
Instrument	ACIS	ACIS	Obspar format version number	6	6
Detector	ACIS-456789	ACIS-456789	Obspar file type	PREDICTED	ACTUAL
Grating	NONE	NONE	Obspar update status	NONE	UPDATED
Data mode	FAINT	FAINT	On-chip summing requested	N	N
Observation mode	SECONDARY	SECONDARY	Subarray requested	NONE	NONE
Pointing RA	0	307.0269196290321	Alternating exposures requested	N	N
Pointing Dec	0	-35.01824146026546	Primary exposure time	0.000000	3.2
Pointing Roll	0.0	287.6839653904164			
SIM focus pos (mm)	-0.684267	-1.428180813131781			
SIM defocus (mm)	0	0.1051558262725154			
SIM translation stage pos (mm)	-190.132523	250.466033080201			
SIM translation stage offset (mm)	0	-0.01005468664627074			
Observation start time	119246199.264	119246198.49547			
Observation start date	2001-10-12T03:56:39	2001-10-12T03:56:38			
Observation end time	119258064.664	119258063.89595			
Observation end date	2001-10-12T07:14:25	2001-10-12T07:14:23			
Read mode	TIMED	TIMED			

2.3 Aspect

2.4 Star Slots

2.5 FID Slots

A Summary

A.1 Status

V&V Scientist	Beth Sundheim
V&V Date (YYYY-MM-DD)	2007.01.05
V&V Edition	1
V&V Disposition and Status	OK
V&V Charge Time	5.87132605

A.2 Comments