

V&V Reference Report

L2 ASCDS Version : 7.6.10

Observation 61433 - L2 Version 001
Chandra X-Ray Center

L2 Processing Date : Jan 10 2007

Contents

1	Front	2
2	OBI	3
2.1	OBI	3
2.1.1	Images	3
2.1.2	Bias	3
2.1.3	Parameters	4
2.1.4	Events	4
2.2	Compared Parameters	5
2.3	Star Slots	6
2.4	FID Slots	6
A	Summary	7
A.1	Status	7
A.2	Comments	7

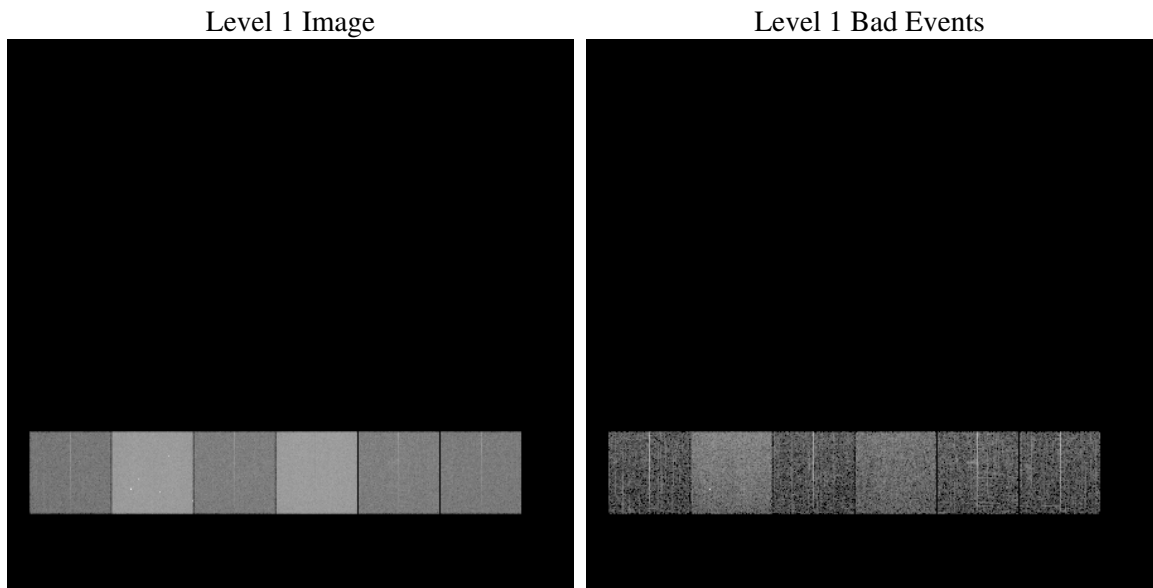
1 Front

seq_num	
obs_id	61433
title	ACIS-456789 diagnostics
observer	CHANDRA engineering request/realtime commanding
object	
dtcycle	0
cycle	P
ra_targ	0.0
dec_targ	0.0
ra_nom	305.02555857348
dec_nom	-35.019506868606
roll_nom	284.37933326409
revision	2
ontime	5978.1861847639
livetime	5902.4867916609
ontime4	2179.8636591733
ontime5	6415.7563610673
ontime6	2494.2030696571
ontime7	5978.1861847639
ontime8	2504.0081600398
ontime9	2364.4386192262
l2events	1218014

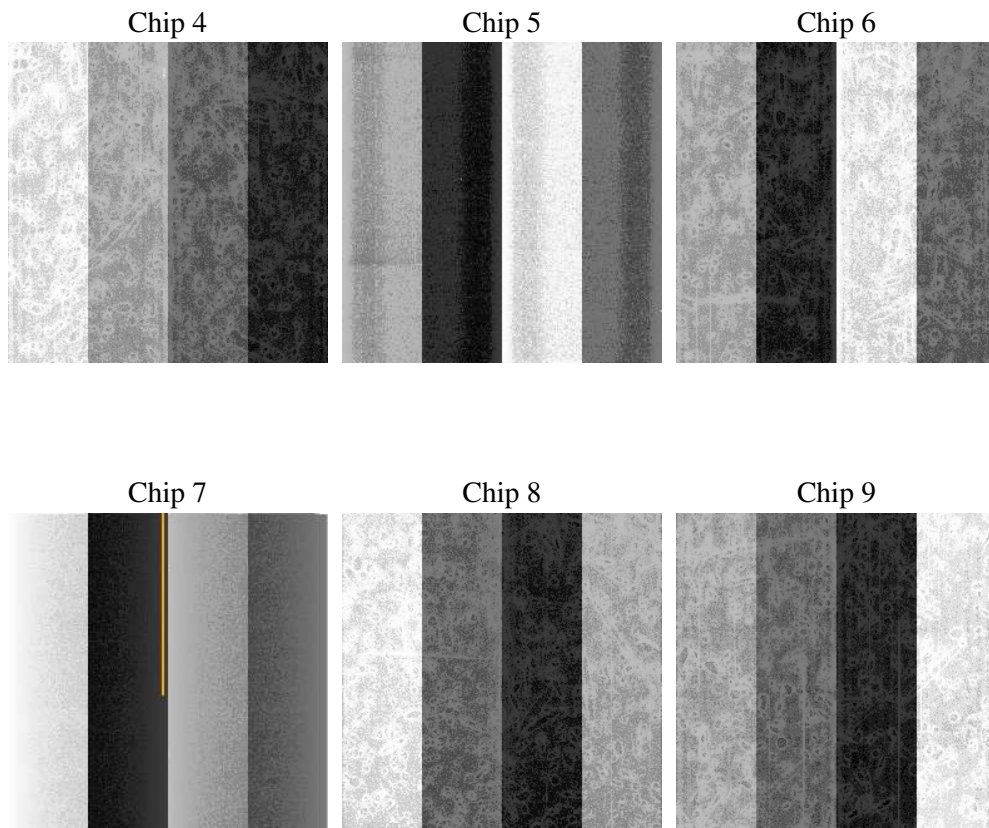
2 OBI

2.1 OBI

2.1.1 Images



2.1.2 Bias



2.1.3 Parameters

obi_num	0
ascdsver	7.6.10
caldsver	3.3.0
date	2007-01-10T17:12:11
revision	2

sched_exp_time	0.0
ontime	5978.1861847639
ontime4	2179.8636591733
ontime5	6415.7563610673
ontime6	2494.2030696571
ontime7	5978.1861847639
ontime8	2504.0081600398
ontime9	2364.4386192262
l1events	1424166

2.1.4 Events

	ccd 4	ccd 5	ccd 6	ccd 7	ccd 8	ccd 9
level 1 events	141493	384605	172430	392325	175178	158135
rejected events	18700	43399	19151	31085	21891	18882
rejected %	13%	11%	11%	7%	12%	11%

	ccd 4	ccd 5	ccd 6	ccd 7	ccd 8	ccd 9
grade 0 events	69662	87734	84099	92389	84847	76126
	49%	22%	48%	23%	48%	48%
grade 1 events	374	629	411	242	410	394
	0%	0%	0%	0%	0%	0%
grade 2 events	21469	116851	26342	80454	27081	24779
	15%	30%	15%	20%	15%	15%
grade 3 events	7565	23175	9431	36948	9811	8600
	5%	6%	5%	9%	5%	5%
grade 4 events	7507	23000	9670	36673	9615	8737
	5%	5%	5%	9%	5%	5%
grade 5 events	1193	8407	1455	6423	1553	1418
	0%	2%	0%	1%	0%	0%
grade 6 events	16590	90446	23832	114900	22049	21011
	11%	23%	13%	29%	12%	13%
grade 7 events	17133	34363	17190	24296	19812	17070
	12%	8%	9%	6%	11%	10%

2.2 Compared Parameters

Parameter	Planned	Actual	Parameter	Planned	Actual
Instrument	ACIS	ACIS	Obspar format version number	6	6
Detector	ACIS-456789	ACIS-456789	Obspar file type	PREDICTED	ACTUAL
Grating	NONE	NONE	Obspar update status	NONE	UPDATED
Data mode	FAINT	FAINT	On-chip summing requested	N	N
Observation mode	SECONDARY	SECONDARY	Subarray requested	NONE	NONE
Pointing RA	0	305.0255585734755	Alternating exposures requested	N	N
Pointing Dec	0	-35.01950686860609	Primary exposure time	0.000000	3.2
Pointing Roll	0.0	284.3793332640904			
SIM focus pos (mm)	-0.684267	-0.6828225247311905			
SIM defocus (mm)	0	0.8505141146731063			
SIM translation stage pos (mm)	-190.132523	250.4635187648994			
SIM translation stage offset (mm)	0	-0.007540371344731511			
Observation start time	119931495.841	119931495.07267			
Observation start date	2001-10-20T02:18:16	2001-10-20T02:18:15			
Observation end time	119965167.092	119965166.32401			
Observation end date	2001-10-20T11:39:27	2001-10-20T11:39:26			
Read mode	TIMED	TIMED			

2.3 Star Slots

2.4 FID Slots

A Summary

A.1 Status

V&V Scientist	Jen Lauer
V&V Date (YYYY-MM-DD)	2007.01.10
V&V Edition	1
V&V Disposition and Status	OK
V&V Charge Time	5.97818618

A.2 Comments