

V&V Reference Report

L2 ASCDS Version : 7.6.10

Observation 61393 - L2 Version 001
Chandra X-Ray Center

L2 Processing Date : Jan 21 2007

Contents

1	Front	2
2	OBI	3
2.1	OBI	3
2.1.1	Images	3
2.1.2	Bias	3
2.1.3	Parameters	4
2.1.4	Events	4
2.2	Compared Parameters	5
2.3	Star Slots	6
2.4	FID Slots	6
A	Summary	7
A.1	Status	7
A.2	Comments	7

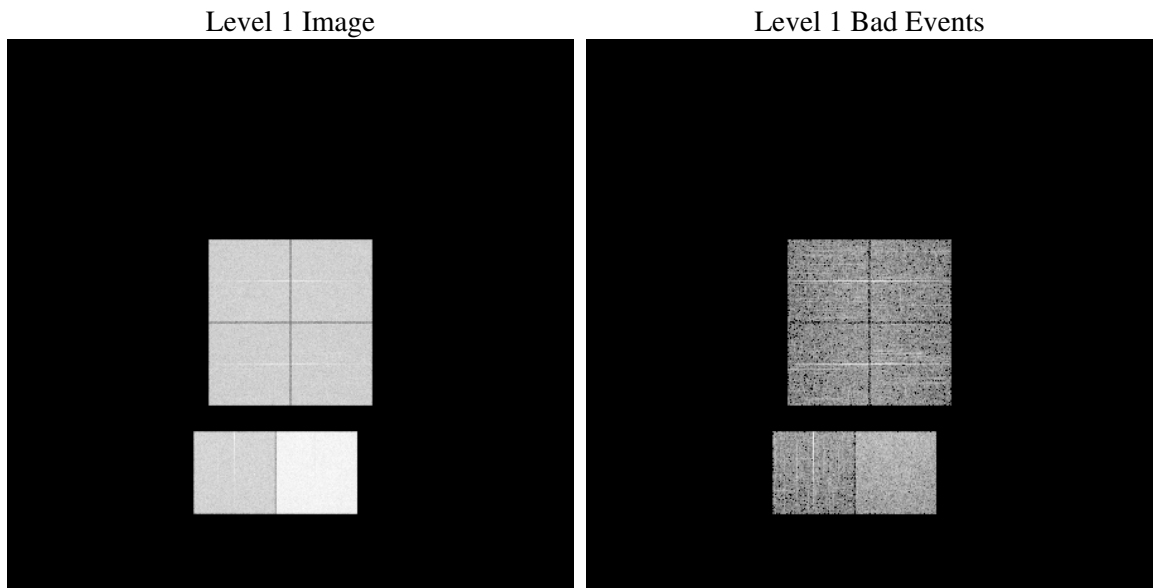
1 Front

seq_num	
obs_id	61393
title	ACIS-012367 diagnostics
observer	CHANDRA engineering request/realtime commanding
object	
dtcycle	0
cycle	P
ra_targ	0.0
dec_targ	0.0
ra_nom	107.02374493009
dec_nom	-57.804291725904
roll_nom	31.062061131694
revision	2
ontime	7437.6652322263
livetime	7343.4850366315
ontime0	2940.3463886231
ontime1	2953.3519676626
ontime2	2826.9927171618
ontime3	2825.7528365999
ontime6	3086.3161390275
ontime7	7437.6652322263
l2events	1223474

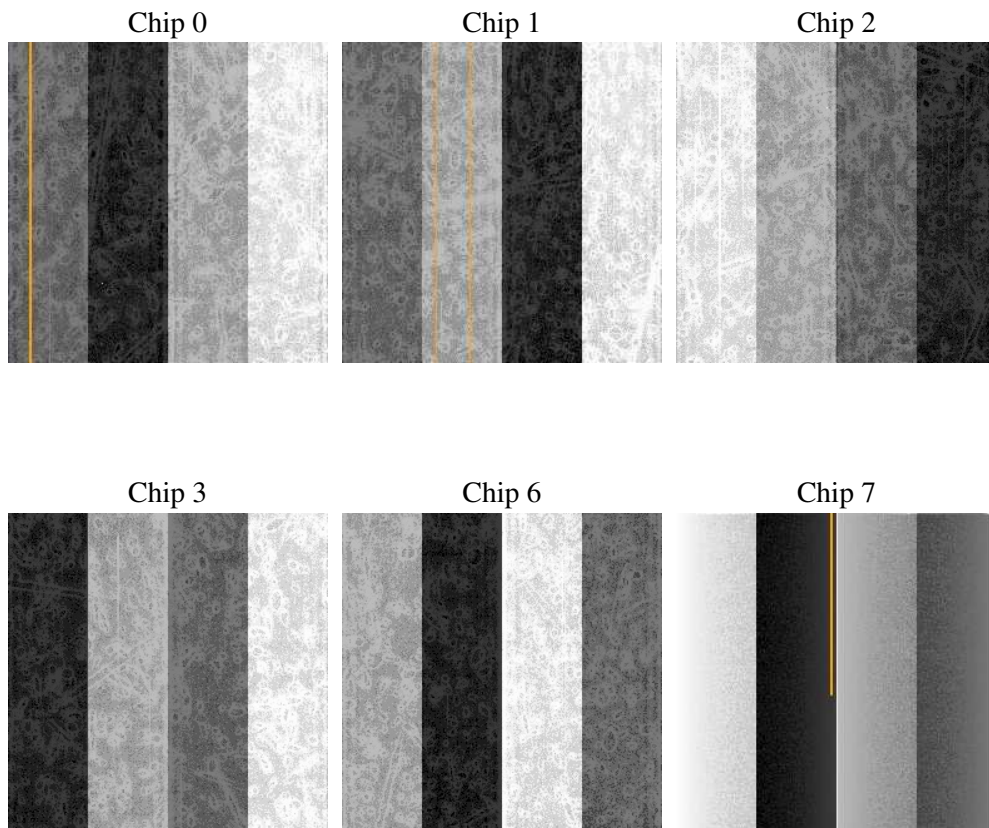
2 OBI

2.1 OBI

2.1.1 Images



2.1.2 Bias



2.1.3 Parameters

obi_num	2
ascdsver	7.6.10
caldbver	3.3.0
date	2007-01-20T16:13:32
revision	2

sched_exp_time	0.0
ontime	7437.6652322263
ontime0	2940.3463886231
ontime1	2953.3519676626
ontime2	2826.9927171618
ontime3	2825.7528365999
ontime6	3086.3161390275
ontime7	7437.6652322263
l1events	1422851

2.1.4 Events

	ccd 0	ccd 1	ccd 2	ccd 3	ccd 6	ccd 7
level 1 events	187821	188358	182167	182526	205288	476691
rejected events	21757	21250	20671	22118	23389	38908
rejected %	11%	11%	11%	12%	11%	8%

	ccd 0	ccd 1	ccd 2	ccd 3	ccd 6	ccd 7
grade 0 events	91825	92435	90005	89964	99048	111933
	48%	49%	49%	49%	48%	23%
grade 1 events	511	455	482	504	467	282
	0%	0%	0%	0%	0%	0%
grade 2 events	29358	29297	28226	28051	31385	97169
	15%	15%	15%	15%	15%	20%
grade 3 events	10512	10671	10208	10011	11285	44651
	5%	5%	5%	5%	5%	9%
grade 4 events	10390	10667	10139	10116	11427	44439
	5%	5%	5%	5%	5%	9%
grade 5 events	1495	1555	1449	1524	1743	7999
	0%	0%	0%	0%	0%	1%
grade 6 events	24155	24478	23090	22458	29013	139784
	12%	12%	12%	12%	14%	29%
grade 7 events	19575	18800	18568	19898	20920	30434
	10%	9%	10%	10%	10%	6%

2.2 Compared Parameters

Parameter	Planned	Actual	Parameter	Planned	Actual
Instrument	ACIS	ACIS	Obspar format version number	6	6
Detector	ACIS-012367	ACIS-012367	Obspar file type	PREDICTED	ACTUAL
Grating	NONE	NONE	Obspar update status	NONE	UPDATED
Data mode	FAINT	FAINT	On-chip summing requested	N	N
Observation mode	SECONDARY	SECONDARY	Subarray requested	NONE	NONE
Pointing RA	0	107.0237449300929	Alternating exposures requested	N	N
Pointing Dec	0	-57.80429172590427	Primary exposure time	0.000000	3.2
Pointing Roll	0.0	31.06206113169423			
SIM focus pos (mm)	-0.782348	-0.6828225247311905			
SIM defocus (mm)	0	0.8505141146731063			
SIM translation stage pos (mm)	-233.592463	250.466033080201			
SIM translation stage offset (mm)	0	-0.01005468664627074			
Observation start time	124043906.705	124043905.93672			
Observation start date	2001-12-06T16:38:27	2001-12-06T16:38:25			
Observation end time	124079500.857	124079500.08814			
Observation end date	2001-12-07T02:31:41	2001-12-07T02:31:40			
Read mode	TIMED	TIMED			

2.3 Star Slots

2.4 FID Slots

A Summary

A.1 Status

V&V Scientist	Beth Sundheim
V&V Date (YYYY-MM-DD)	2007.01.21
V&V Edition	1
V&V Disposition and Status	OK
V&V Charge Time	7.43766523

A.2 Comments