

# V&V Reference Report

## L2 ASCDS Version : 8.4.5

Observation 61353 - L2 Version 3  
Chandra X-Ray Center

L2 Processing Date : Sep 30 2012

## Contents

<b>1</b>	<b>Front</b>	<b>2</b>
<b>2</b>	<b>OBI</b>	<b>3</b>
2.1	OBI . . . . .	3
2.1.1	Images . . . . .	3
2.1.2	Bias . . . . .	3
2.1.3	Parameters . . . . .	4
2.1.4	Events . . . . .	4
2.2	Compared Parameters . . . . .	5
2.3	Star Slots . . . . .	6
2.4	FID Slots . . . . .	6
<b>A</b>	<b>Summary</b>	<b>7</b>
A.1	Status . . . . .	7
A.2	Comments . . . . .	7

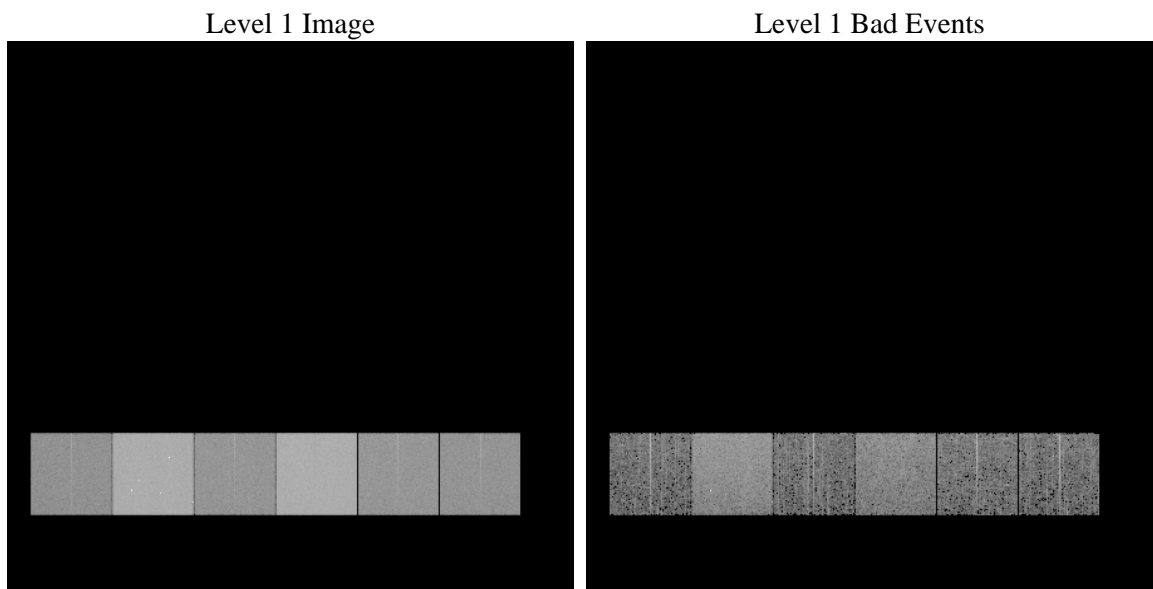
# 1 Front

seq_num	&#160	Sequence number
obs_id	61353	Observation id
title	ACIS-456789 diagnostics	Proposal title
observer	CHANDRA engineering request/realtime commanding	Principal investig
object	&#160	Source name
dtcycle	0	&#160
cycle	P	events from which exps? Prim/Second/Both
ra_targ	0.0	Observer's specified target RA [deg]
dec_targ	0.0	Observer's specified target Dec [deg]
ra_nom	300.0571216245	Nominal RA [deg]
dec_nom	63.012129850135	Nominal Dec [deg]
roll_nom	352.27586141772	Nominal Roll [deg]
revision	3	Processing version of data
ontime	6829.5290558338	Sum of GTIs [s]
livetime	6743.0494466802	Livetime [s]
ontime4	2551.4231461734	Sum of GTIs [s]
ontime5	7283.2632227987	Sum of GTIs [s]
ontime6	2788.0186869055	Sum of GTIs [s]
ontime7	6829.5290558338	Sum of GTIs [s]
ontime8	2873.5452947319	Sum of GTIs [s]
ontime9	2710.2340360135	Sum of GTIs [s]
l2events	1310497	Number of level 2 events

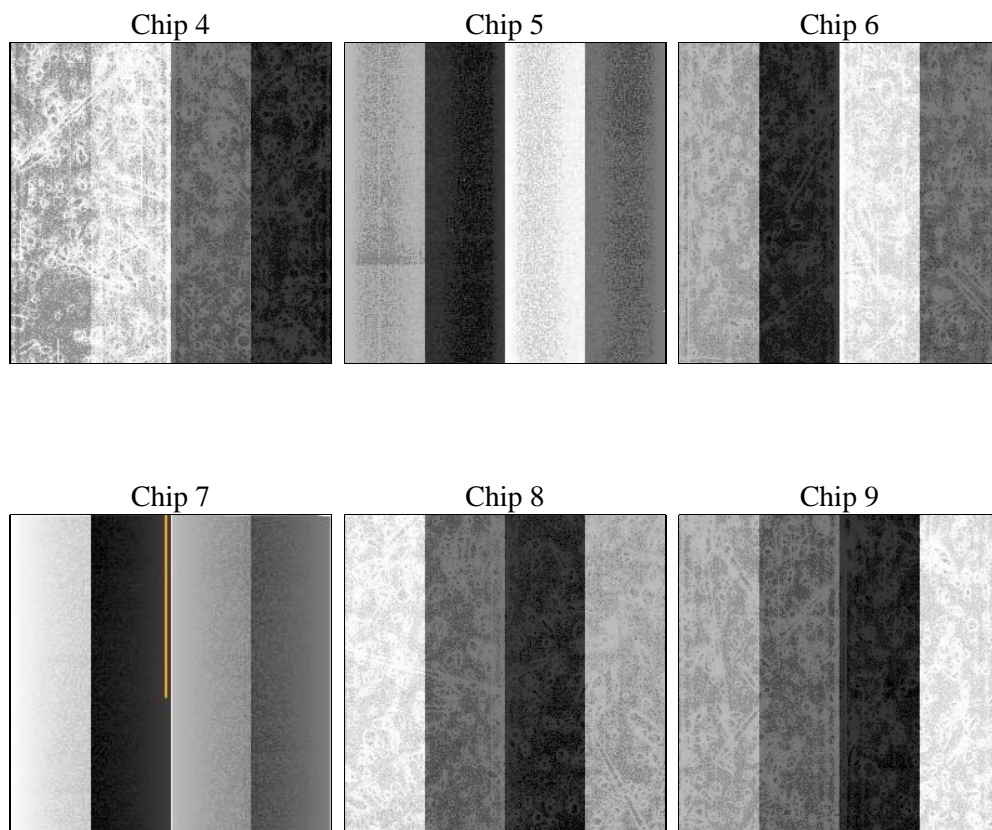
## 2 OBI

### 2.1 OBI

#### 2.1.1 Images



#### 2.1.2 Bias



### 2.1.3 Parameters

obi_num	0	Obi number	sched_exp_time	0.0	[s] Scheduled observation exposure time
ascdsver	8.4.5	Processing system revision	ontime	6829.5290558338	Sum of GTIs [s]
caldbver	4.5.2	&#160	ontime4	2551.4231461734	Sum of GTIs [s]
date	2012-09-30T06:24:43	Date and time of file creation	ontime5	7283.2632227987	Sum of GTIs [s]
revision	3	Processing version of data	ontime6	2788.0186869055	Sum of GTIs [s]
			ontime7	6829.5290558338	Sum of GTIs [s]
			ontime8	2873.5452947319	Sum of GTIs [s]
			ontime9	2710.2340360135	Sum of GTIs [s]
			l1events	1543529	Number of level 1 events

### 2.1.4 Events

	ccd 4	ccd 5	ccd 6	ccd 7	ccd 8	ccd 9		ccd 4	ccd 5	ccd 6	ccd 7	ccd 8	ccd 9
level 1 events	156681	417891	182652	425533	189584	171188	grade 0 events	76780	90505	88237	98766	91695	82255
rejected events	20553	51025	21239	36140	23071	21009		49%	21%	48%	23%	48%	48%
rejected %	13%	12%	11%	8%	12%	12%	grade 1 events	416	277	451	268	432	421
								0%	0%	0%	0%	0%	0%
							grade 2 events	24200	129972	27928	86251	29222	26663
								15%	31%	15%	20%	15%	15%
							grade 3 events	8355	23489	9888	39462	10457	9336
								5%	5%	5%	9%	5%	5%
							grade 4 events	8337	23317	9958	39411	10496	9333
								5%	5%	5%	9%	5%	5%
							grade 5 events	1366	9570	1558	7358	1785	1547
								0%	2%	0%	1%	0%	0%
							grade 6 events	18456	99583	25402	125503	24643	22592
								11%	23%	13%	29%	12%	13%
							grade 7 events	18771	41178	19230	28514	20854	19041
								11%	9%	10%	6%	10%	11%

## 2.2 Compared Parameters

Parameter	Planned	Actual	Parameter	Planned	Actual
Instrument	ACIS	ACIS	Obspar format version number	7	7
Detector	ACIS-456789	ACIS-456789	Obspar file type	PREDICTED	ACTUAL
Grating	NONE	NONE	Obspar update status	NONE	UPDATED
Data mode	FAINT	FAINT	On-chip summing requested	N	N
Observation mode	SECONDARY	SECONDARY	Subarray requested	NONE	NONE
[deg] Pointing RA	0	300.0571216245011	Alternating exposures requested	N	N
[deg] Pointing Dec	0	63.0121298501351	[s] Primary exposure time	0.000000	3.2
[deg] Pointing Roll	0.0	352.2758614177234			
[mm] SIM focus pos	-0.684267	-0.6828225247311905			
[mm] SIM defocus	0	0.8505141146731063			
[mm] SIM translation stage pos	-190.132523	250.466033080201			
[mm] SIM translation stage offset	0	-0.01005468664627074			
[s] Observation start time (MET)	127050094.476	127050093.70729			
Observation start date	2002-01-10T11:41:34	2002-01-10T11:41:33			
[s] Observation end time (MET)	127071406.277	127071405.50814			
Observation end date	2002-01-10T17:36:46	2002-01-10T17:36:45			
Read mode	TIMED	TIMED			

## 2.3 Star Slots

## 2.4 FID Slots

## A Summary

### A.1 Status

V&V Scientist	Jen Lauer
V&V Date (YYYY-MM-DD)	2012.10.02
V&V Edition	1
V&V Disposition and Status	OK
V&V Charge Time	6.8295290558338

### A.2 Comments