

V&V Reference Report

L2 ASCDS Version : 7.6.8.1

Observation 61323 - L2 Version 001
Chandra X-Ray Center

L2 Processing Date : Aug 31 2006

Contents

1	Front	2
2	OBI	3
2.1	OBI	3
2.1.1	Images	3
2.1.2	Bias	3
2.1.3	Parameters	4
2.1.4	Events	4
2.2	Compared Parameters	5
2.3	Aspect	6
2.4	Star Slots	8
2.5	FID Slots	8
A	Summary	9
A.1	Status	9
A.2	Comments	9

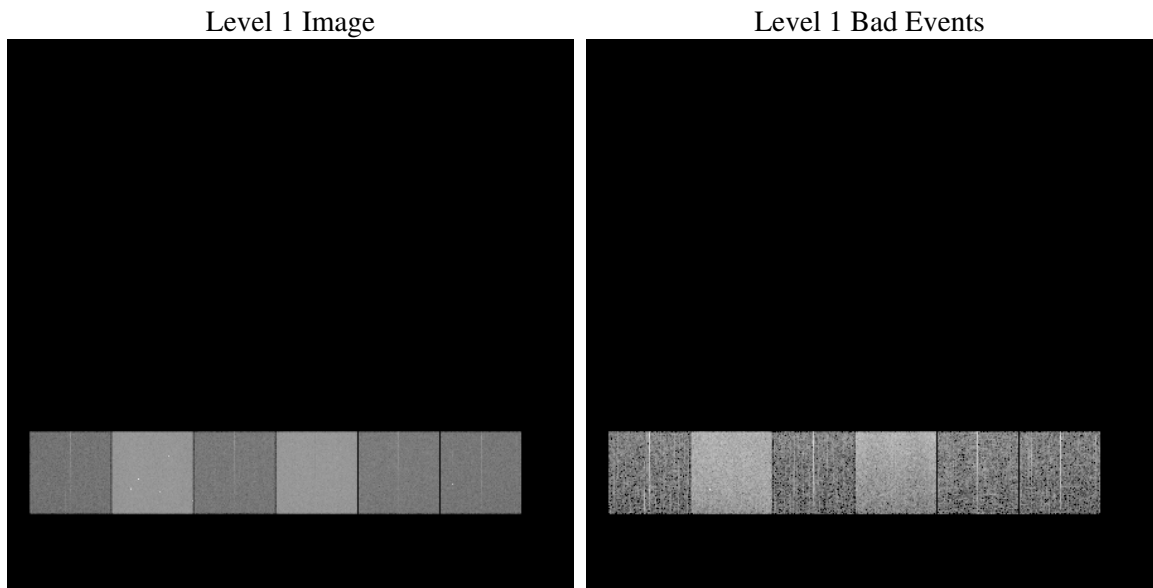
1 Front

seq_num	
obs_id	61323
title	ACIS-456789 diagnostics
observer	CHANDRA engineering request/realtime commanding
object	
dtcycle	0
cycle	P
ra_targ	0.0
dec_targ	0.0
ra_nom	140.02997942632
dec_nom	-39.982921291999
roll_nom	3.7667115719826
revision	2
ontime	6946.0146604031
livetime	6858.0600403852
ontime4	2583.763800174
ontime5	7445.1634524912
ontime6	2791.1488214284
ontime7	6946.0146604031
ontime8	2963.0058414638
ontime9	2803.9900606722
l2events	1286804

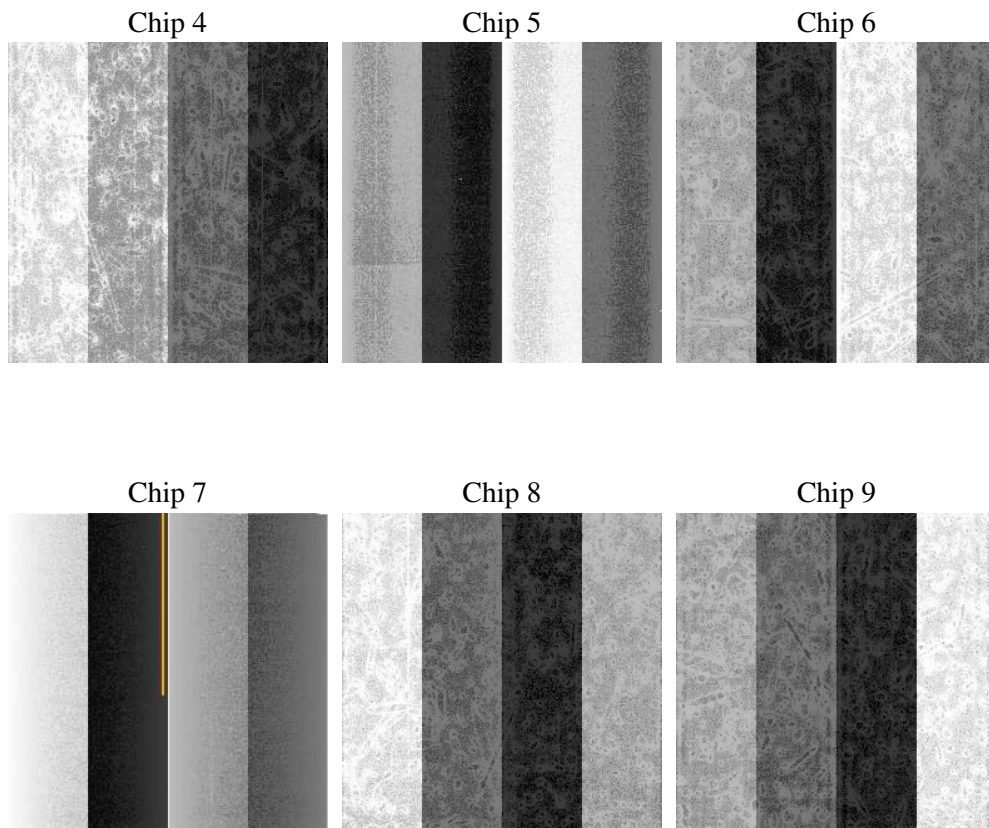
2 OBI

2.1 OBI

2.1.1 Images



2.1.2 Bias



2.1.3 Parameters

obi_num	0
ascdsver	7.6.8.1
caldbver	3.2.3
date	2006-09-01T00:06:32
revision	2

sched_exp_time	0.0
ontime	6948.7215415537
ontime4	2586.3475613296
ontime5	7447.8292936385
ontime6	2793.7736225873
ontime7	6948.7215415537
ontime8	2965.5485626161
ontime9	2806.7379818261
l1events	1542243

2.1.4 Events

	ccd 4	ccd 5	ccd 6	ccd 7	ccd 8	ccd 9
level 1 events	157329	415699	179732	424983	190555	173945
rejected events	21878	61068	21161	49521	22694	20972
rejected %	13%	14%	11%	11%	11%	12%

	ccd 4	ccd 5	ccd 6	ccd 7	ccd 8	ccd 9
grade 0 events	76889	44273	86337	69251	92690	84126
	48%	10%	48%	16%	48%	48%
grade 1 events	441	144	389	146	395	416
	0%	0%	0%	0%	0%	0%
grade 2 events	23921	169762	27542	113120	29572	27019
	15%	40%	15%	26%	15%	15%
grade 3 events	8221	11888	9937	28256	10504	9593
	5%	2%	5%	6%	5%	5%
grade 4 events	8187	11536	9941	28064	10712	9522
	5%	2%	5%	6%	5%	5%
grade 5 events	1339	7085	1600	6772	1774	1518
	0%	1%	0%	1%	0%	0%
grade 6 events	18417	117311	24997	136964	24555	22890
	11%	28%	13%	32%	12%	13%
grade 7 events	19914	53700	18989	42410	20353	18861
	12%	12%	10%	9%	10%	10%

2.2 Compared Parameters

Parameter	Planned	Actual	Parameter	Planned	Actual
Instrument	ACIS	ACIS	Obspar format version number	6	6
Detector	ACIS-456789	ACIS-456789	Obspar file type	PREDICTED	ACTUAL
Grating	NONE	NONE	Obspar update status	NONE	UPDATED
Data mode	FAINT	FAINT	On-chip summing requested	N	N
Observation mode	SECONDARY	SECONDARY	Subarray requested	NONE	NONE
Pointing RA	0	140.0299794263155	Alternating exposures requested	N	N
Pointing Dec	0	-39.98292129199925	Primary exposure time	0.000000	3.2
Pointing Roll	0.0	3.766711571982646			
SIM focus pos (mm)	-0.684267	-0.6828225247311905			
SIM defocus (mm)	0	0.8505141146731063			
SIM translation stage pos (mm)	-190.132523	250.466033080201			
SIM translation stage offset (mm)	0	-0.01005468664627074			
Observation start time	129112158.809	129112158.04031			
Observation start date	2002-02-03T08:29:19	2002-02-03T08:29:18			
Observation end time	129126414.509	129126413.74089			
Observation end date	2002-02-03T12:26:55	2002-02-03T12:26:53			
Read mode	TIMED	TIMED			

2.3 Aspect

2.4 Star Slots

2.5 FID Slots

A Summary

A.1 Status

V&V Scientist	Jen Lauer
V&V Date (YYYY-MM-DD)	2006.09.01
V&V Edition	1
V&V Disposition and Status	OK
V&V Charge Time	6.94601466

A.2 Comments