

# V&V Reference Report

## L2 ASCDS Version : 7.6.8.1

Observation 61313 - L2 Version 001  
Chandra X-Ray Center

L2 Processing Date : Aug 31 2006

## Contents

<b>1</b>	<b>Front</b>	<b>2</b>
<b>2</b>	<b>OBI</b>	<b>3</b>
2.1	OBI . . . . .	3
2.1.1	Images . . . . .	3
2.1.2	Bias . . . . .	3
2.1.3	Parameters . . . . .	4
2.1.4	Events . . . . .	4
2.2	Compared Parameters . . . . .	5
2.3	Aspect . . . . .	6
2.4	Star Slots . . . . .	8
2.5	FID Slots . . . . .	8
<b>A</b>	<b>Summary</b>	<b>9</b>
A.1	Status . . . . .	9
A.2	Comments . . . . .	9

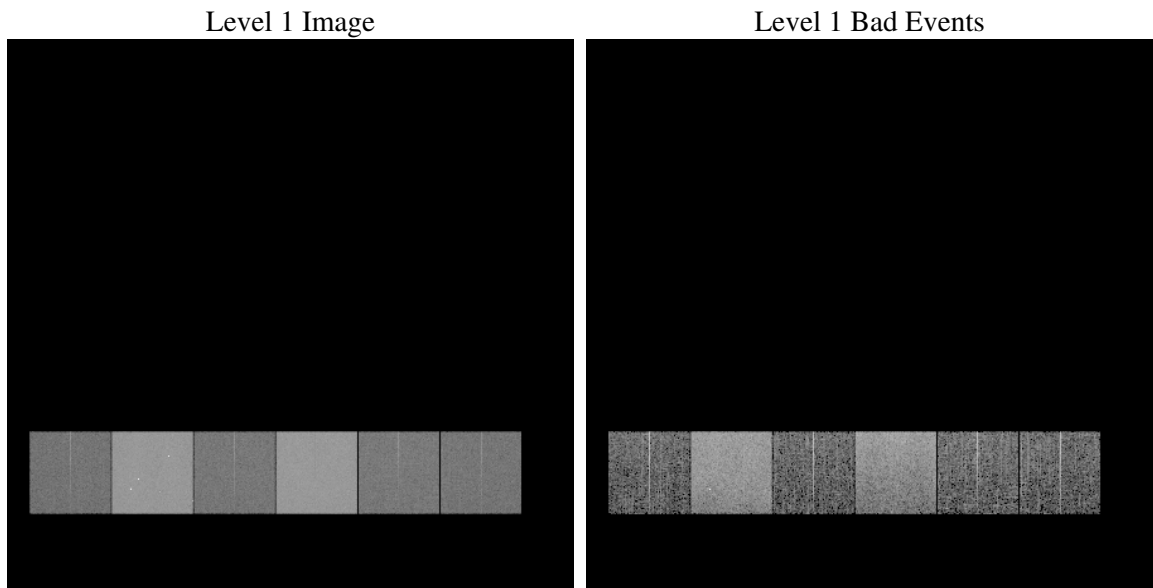
# 1 Front

seq_num	&#160
obs_id	61313
title	ACIS-456789 diagnostics
observer	CHANDRA engineering request/realtime commanding
object	&#160
dtcycle	0
cycle	P
ra_targ	0.0
dec_targ	0.0
ra_nom	4.7447044111392
dec_nom	36.054520059991
roll_nom	316.15500343166
revision	2
ontime	7023.1027352512
livetime	6934.1719796127
ontime4	2612.2435988188
ontime5	7531.9734481275
ontime6	2741.8440288454
ontime7	7023.1027352512
ontime8	2813.2196922451
ontime9	2696.3462394178
l2events	1275661

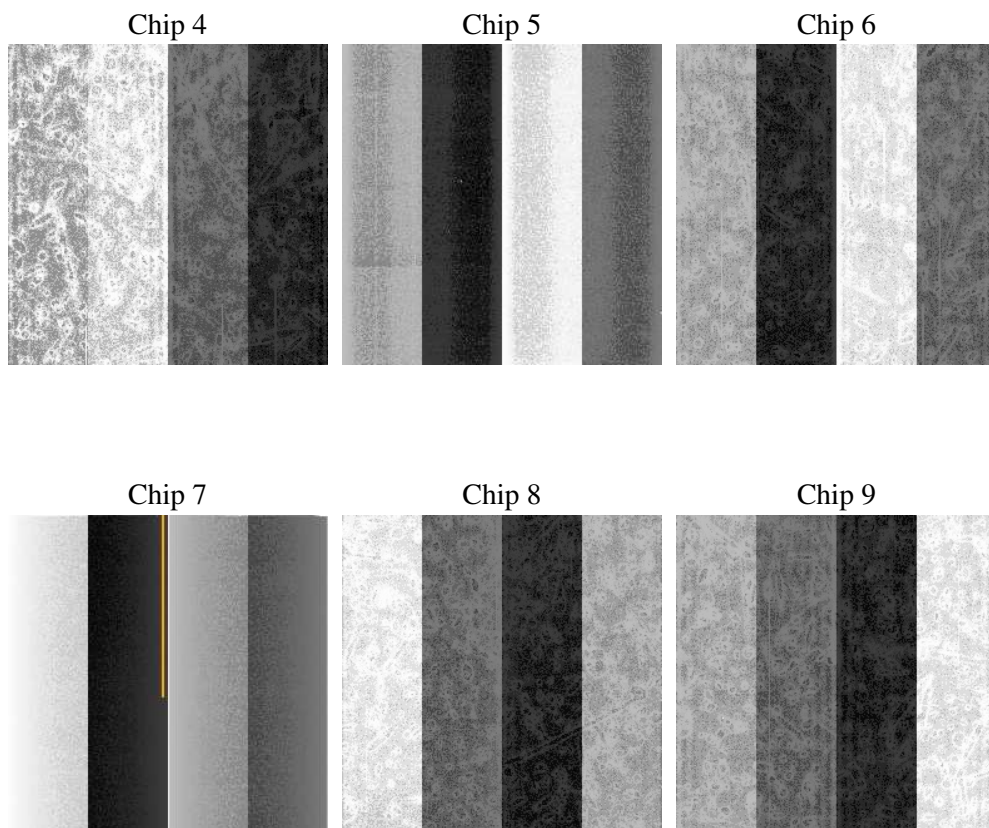
## 2 OBI

### 2.1 OBI

#### 2.1.1 Images



#### 2.1.2 Bias



### 2.1.3 Parameters

obi_num	0
ascdsver	7.6.8.1
caldsver	3.2.3
date	2006-09-01T02:40:49
revision	2

sched_exp_time	0.0
ontime	7023.257927835
ontime4	2612.2756714076
ontime5	7532.087600708
ontime6	2741.9171414375
ontime7	7023.257927835
ontime8	2813.2196922451
ontime9	2696.5424720049
l1events	1542440

### 2.1.4 Events

	ccd 4	ccd 5	ccd 6	ccd 7	ccd 8	ccd 9
level 1 events	157447	425659	175370	432943	183789	167232
rejected events	21743	65286	21571	54029	24279	21794
rejected %	13%	15%	12%	12%	13%	13%

	ccd 4	ccd 5	ccd 6	ccd 7	ccd 8	ccd 9
grade 0 events	76803	44457	84020	68745	87341	79568
	48%	10%	47%	15%	47%	47%
grade 1 events	430	134	445	183	470	435
	0%	0%	0%	0%	0%	0%
grade 2 events	23966	172551	26478	114409	28235	25776
	15%	40%	15%	26%	15%	15%
grade 3 events	8270	12008	9479	28105	9956	9070
	5%	2%	5%	6%	5%	5%
grade 4 events	8379	11657	9493	27579	10210	9054
	5%	2%	5%	6%	5%	5%
grade 5 events	1350	7433	1583	7327	1792	1560
	0%	1%	0%	1%	0%	0%
grade 6 events	18286	119700	24329	140076	23768	21970
	11%	28%	13%	32%	12%	13%
grade 7 events	19963	57719	19543	46519	22017	19799
	12%	13%	11%	10%	11%	11%

## 2.2 Compared Parameters

Parameter	Planned	Actual	Parameter	Planned	Actual
Instrument	ACIS	ACIS	Obspar format version number	6	6
Detector	ACIS-456789	ACIS-456789	Obspar file type	PREDICTED	ACTUAL
Grating	NONE	NONE	Obspar update status	NONE	UPDATED
Data mode	FAINT	FAINT	On-chip summing requested	N	N
Observation mode	SECONDARY	SECONDARY	Subarray requested	NONE	NONE
Pointing RA	0	4.744704411139207	Alternating exposures requested	N	N
Pointing Dec	0	36.05452005999062	Primary exposure time	0.000000	3.2
Pointing Roll	0.0	316.1550034316605			
SIM focus pos (mm)	-0.684267	-0.7809083437167272			
SIM defocus (mm)	0	0.7524282956875696			
SIM translation stage pos (mm)	-190.132523	250.466033080201			
SIM translation stage offset (mm)	0	-0.01005468664627074			
Observation start time	129800329.487	129800328.71808			
Observation start date	2002-02-11T07:38:49	2002-02-11T07:38:48			
Observation end time	129811594.237	129811593.46853			
Observation end date	2002-02-11T10:46:34	2002-02-11T10:46:33			
Read mode	TIMED	TIMED			

## 2.3 Aspect



## **2.4 Star Slots**

## **2.5 FID Slots**



## A Summary

### A.1 Status

V&V Scientist	Jen Lauer
V&V Date (YYYY-MM-DD)	2006.09.01
V&V Edition	1
V&V Disposition and Status	OK
V&V Charge Time	7.02310273

### A.2 Comments