

V&V Reference Report

L2 ASCDS Version : 7.6.8

Observation 60603 - L2 Version 001
Chandra X-Ray Center

L2 Processing Date : Jul 12 2006

Contents

1	Front	2
2	OBI	3
2.1	OBI	3
2.1.1	Images	3
2.1.2	Bias	3
2.1.3	Parameters	4
2.1.4	Events	4
2.2	Compared Parameters	5
2.3	Aspect	6
2.4	Star Slots	8
2.5	FID Slots	8
A	Summary	9
A.1	Status	9
A.2	Comments	9

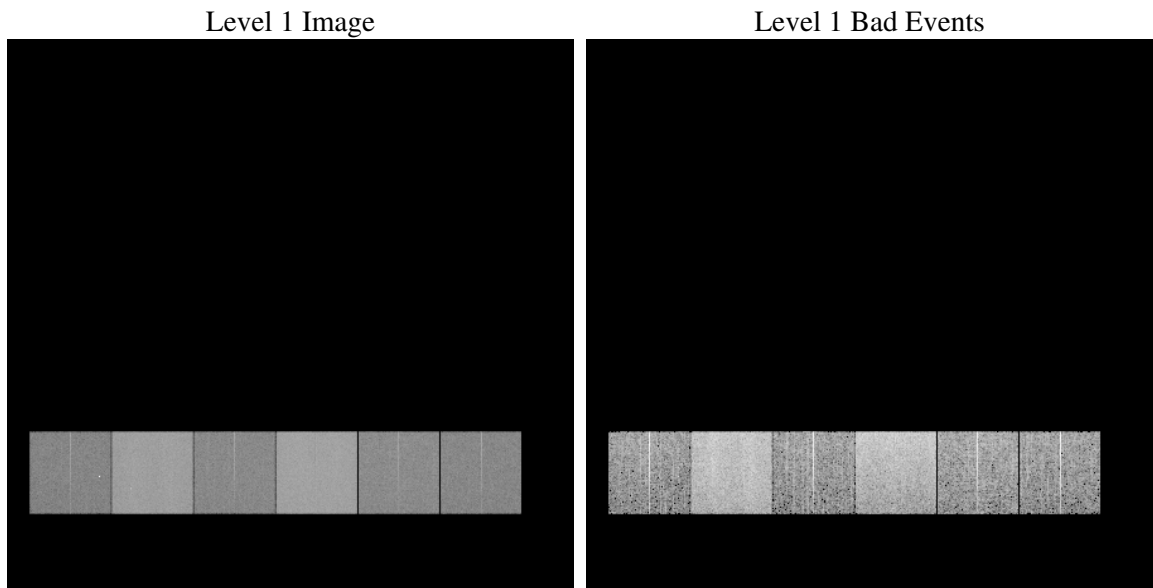
1 Front

seq_num	
obs_id	60603
title	ACIS-456789 diagnostics
observer	CHANDRA engineering request/realtime commanding
object	
dtcycle	0
cycle	P
ra_targ	0.0
dec_targ	0.0
ra_nom	335.97289115946
dec_nom	0.0091145121063259
roll_nom	128.38074504385
revision	2
ontime	8450.6573449373
livetime	8343.6500332608
ontime4	3945.8269962966
ontime5	8450.6983849406
ontime6	4221.2697823346
ontime7	8450.6573449373
ontime8	4396.3656705916
ontime9	4123.9169270992
l2events	1224527

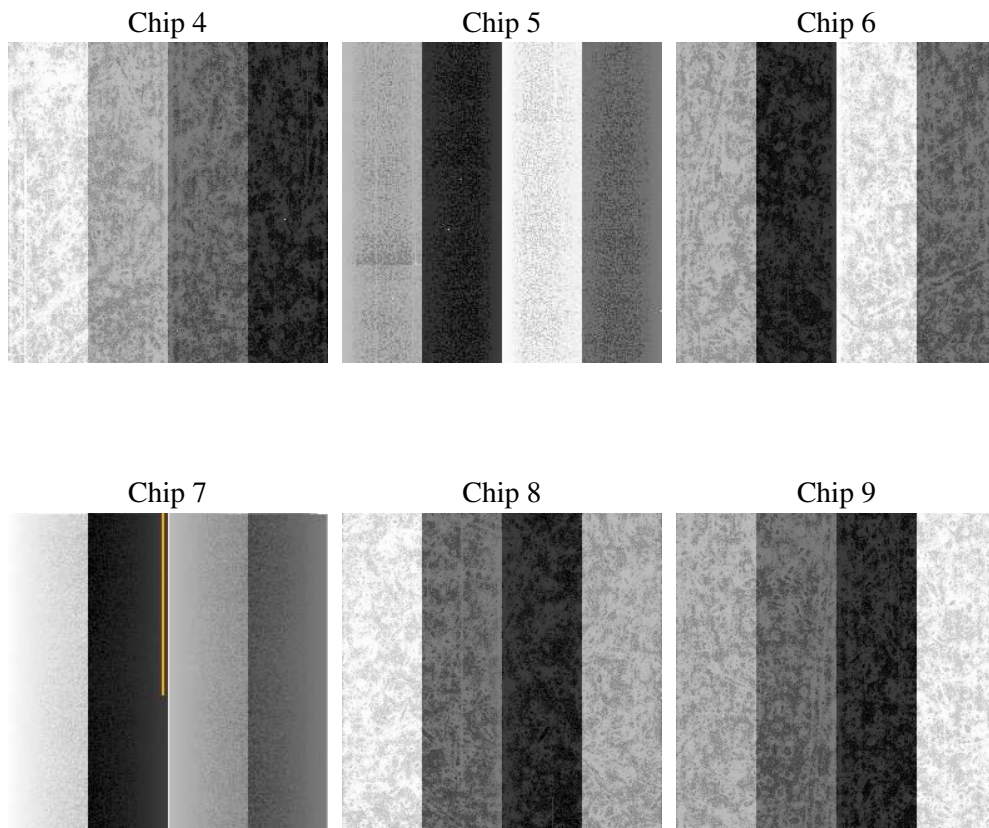
2 OBI

2.1 OBI

2.1.1 Images



2.1.2 Bias



2.1.3 Parameters

obi_num	1
ascdsver	7.6.8
caldbver	3.2.2
date	2006-07-13T01:57:21
revision	2

sched_exp_time	0.0
ontime	8452.5286605358
ontime4	3947.5751918852
ontime5	8452.5286605358
ontime6	4223.0590179265
ontime7	8452.5286605358
ontime8	4398.0728262067
ontime9	4125.829282701
l1events	1537623

2.1.4 Events

	ccd 4	ccd 5	ccd 6	ccd 7	ccd 8	ccd 9
level 1 events	179595	357985	201794	391664	215198	191387
rejected events	29988	66822	30850	60467	34309	30289
rejected %	16%	18%	15%	15%	15%	15%

	ccd 4	ccd 5	ccd 6	ccd 7	ccd 8	ccd 9
grade 0 events	88581	28935	92558	56612	99613	89039
	49%	8%	45%	14%	46%	46%
grade 1 events	652	120	435	131	498	484
	0%	0%	0%	0%	0%	0%
grade 2 events	22346	139271	30447	101938	31525	27501
	12%	38%	15%	26%	14%	14%
grade 3 events	9815	9014	10106	23566	11420	10257
	5%	2%	5%	6%	5%	5%
grade 4 events	9846	8409	10206	22797	11262	9947
	5%	2%	5%	5%	5%	5%
grade 5 events	1884	6534	2055	7088	2399	2152
	1%	1%	1%	1%	1%	1%
grade 6 events	19173	105649	27807	126437	27222	24522
	10%	29%	13%	32%	12%	12%
grade 7 events	27298	60053	28180	53095	31259	27485
	15%	16%	13%	13%	14%	14%

2.2 Compared Parameters

Parameter	Planned	Actual	Parameter	Planned	Actual
Instrument	ACIS	ACIS	Obspar format version number	6	6
Detector	ACIS-456789	ACIS-456789	Obspar file type	PREDICTED	ACTUAL
Grating	NONE	NONE	Obspar update status	NONE	UPDATED
Data mode	FAINT	FAINT	On-chip summing requested	N	N
Observation mode	SECONDARY	SECONDARY	Subarray requested	NONE	NONE
Pointing RA	0	335.9728911594641	Alternating exposures requested	N	N
Pointing Dec	0	0.009114512106325943	Primary exposure time	0.000000	3.2
Pointing Roll	0.0	128.3807450438456			
SIM focus pos (mm)	-0.684267	-0.6828225247311905			
SIM defocus (mm)	0	0.8505141146731063			
SIM translation stage pos (mm)	-190.132523	250.466033080201			
SIM translation stage offset (mm)	0	-0.01005468664627074			
Observation start time	176186864.520122	176186863.49541			
Observation start date	2003-08-02T04:47:45	2003-08-02T04:47:43			
Observation end time	176198145.670603	176198144.64589			
Observation end date	2003-08-02T07:55:46	2003-08-02T07:55:44			
Read mode	TIMED	TIMED			

2.3 Aspect

2.4 Star Slots

2.5 FID Slots

A Summary

A.1 Status

V&V Scientist	Jen Lauer
V&V Date (YYYY-MM-DD)	2006.07.13
V&V Edition	1
V&V Disposition and Status	OK
V&V Charge Time	8.45065734

A.2 Comments

The ACIS focal plane temperature is above calibration limits for the entire observation.