

# V&V Reference Report

## L2 ASCDS Version : 7.6.7.2

Observation 60383 - L2 Version 001  
Chandra X-Ray Center

L2 Processing Date : Jun 4 2006

## Contents

<b>1</b>	<b>Front</b>	<b>2</b>
<b>2</b>	<b>OBI</b>	<b>3</b>
2.1	OBI . . . . .	3
2.1.1	Images . . . . .	3
2.1.2	Bias . . . . .	3
2.1.3	Parameters . . . . .	4
2.1.4	Events . . . . .	4
2.2	Compared Parameters . . . . .	5
2.3	Aspect . . . . .	6
2.4	Star Slots . . . . .	8
2.5	FID Slots . . . . .	8
<b>A</b>	<b>Summary</b>	<b>9</b>
A.1	Status . . . . .	9
A.2	Comments . . . . .	9

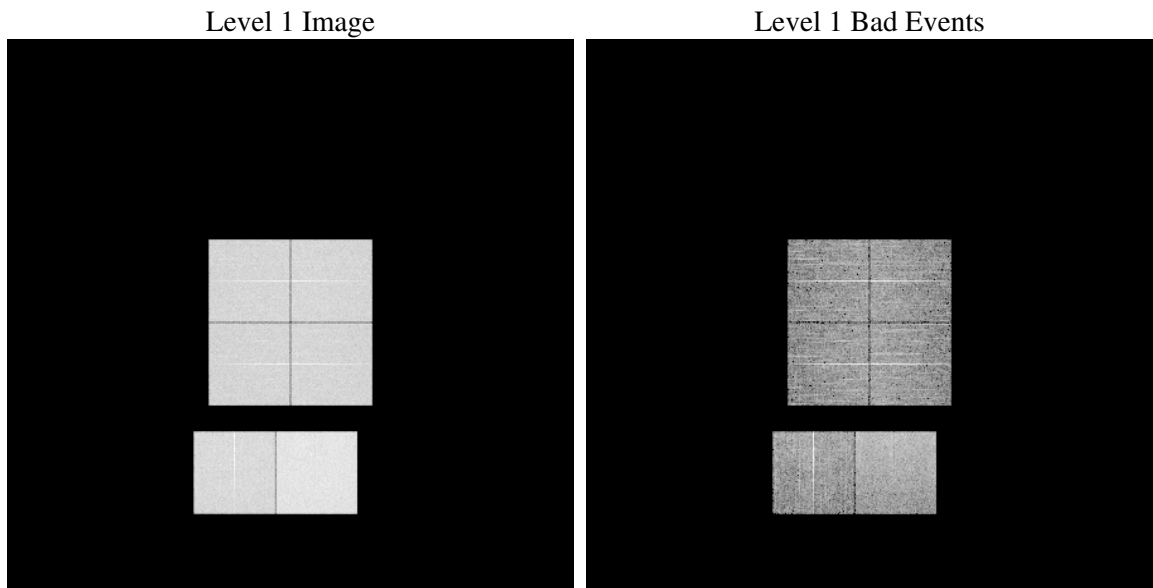
# 1 Front

seq_num	&#160
obs_id	60383
title	ACIS-012367 diagnostics
observer	CHANDRA engineering request/realtime commanding
object	&#160
dtcycle	0
cycle	P
ra_targ	0.0
dec_targ	0.0
ra_nom	148.0168369316
dec_nom	-7.4767636961008
roll_nom	21.384656640635
revision	2
ontime	8447.9999685287
livetime	8341.0263061524
ontime0	6065.8817849755
ontime1	6172.8337360024
ontime2	5815.4405439496
ontime3	5902.7823537588
ontime6	6350.243177712
ontime7	8447.9999685287
l2events	1232269

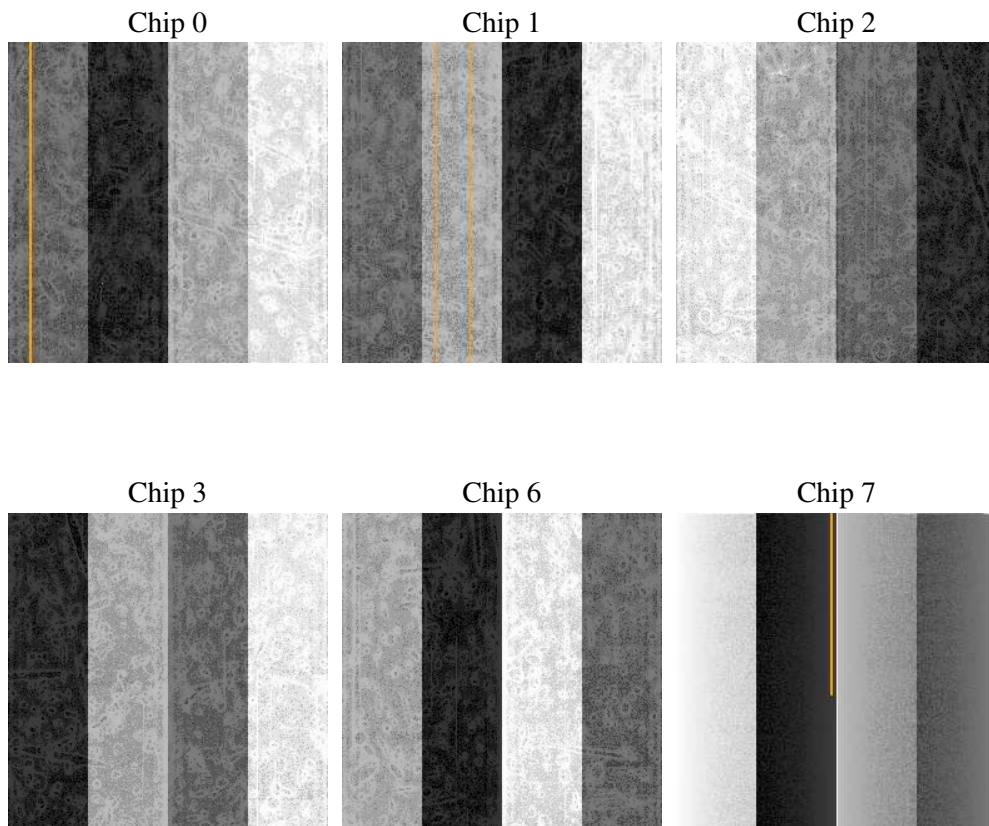
## 2 OBI

### 2.1 OBI

#### 2.1.1 Images



#### 2.1.2 Bias



### 2.1.3 Parameters

obi_num	0
ascdsver	7.6.7.2
caldbver	3.2.2
date	2006-06-05T00:51:25
revision	2

sched_exp_time	0.0
ontime	8468.7510800958
ontime0	6080.1509559453
ontime1	6190.3438673019
ontime2	5827.3542762101
ontime3	5918.101246208
ontime6	6362.1158500612
ontime7	8468.7510800958
l1events	1536663

### 2.1.4 Events

	ccd 0	ccd 1	ccd 2	ccd 3	ccd 6	ccd 7
level 1 events	235352	238668	229080	234244	259663	339656
rejected events	36614	36579	36521	38476	40882	55283
rejected %	15%	15%	15%	16%	15%	16%

	ccd 0	ccd 1	ccd 2	ccd 3	ccd 6	ccd 7
grade 0 events	110109	111373	108348	110601	119067	50113
	46%	46%	47%	47%	45%	14%
grade 1 events	548	478	637	580	556	129
	0%	0%	0%	0%	0%	0%
grade 2 events	34711	35883	32511	33394	38117	86435
	14%	15%	14%	14%	14%	25%
grade 3 events	12908	12602	12600	12644	13563	20840
	5%	5%	5%	5%	5%	6%
grade 4 events	12697	12583	12429	12853	13620	20389
	5%	5%	5%	5%	5%	6%
grade 5 events	2388	2571	2344	2623	2811	6776
	1%	1%	1%	1%	1%	1%
grade 6 events	28848	30264	27077	26816	34858	107351
	12%	12%	11%	11%	13%	31%
grade 7 events	33143	32914	33134	34733	37071	47623
	14%	13%	14%	14%	14%	14%

## 2.2 Compared Parameters

Parameter	Planned	Actual	Parameter	Planned	Actual
Instrument	ACIS	ACIS	Obspar format version number	6	6
Detector	ACIS-012367	ACIS-012367	Obspar file type	PREDICTED	ACTUAL
Grating	NONE	NONE	Obspar update status	NONE	UPDATED
Data mode	FAINT	FAINT	On-chip summing requested	N	N
Observation mode	SECONDARY	SECONDARY	Subarray requested	NONE	NONE
Pointing RA	0	148.0168369315985	Alternating exposures requested	N	N
Pointing Dec	0	-7.476763696100786	Primary exposure time	0.000000	3.2
Pointing Roll	0.0	21.38465664063522			
SIM focus pos (mm)	-0.782348	-0.6828225247311905			
SIM defocus (mm)	0	0.8505141146731063			
SIM translation stage pos (mm)	-233.592463	250.466033080201			
SIM translation stage offset (mm)	0	-0.01005468664627074			
Observation start time	192395059.020044	192395057.99532			
Observation start date	2004-02-05T19:04:19	2004-02-05T19:04:17			
Observation end time	192418701.671078	192418700.64635			
Observation end date	2004-02-06T01:38:22	2004-02-06T01:38:20			
Read mode	TIMED	TIMED			

## 2.3 Aspect



## **2.4 Star Slots**

## **2.5 FID Slots**



## A Summary

### A.1 Status

V&V Scientist	Jen Lauer
V&V Date (YYYY-MM-DD)	2006.06.05
V&V Edition	1
V&V Disposition and Status	OK
V&V Charge Time	8.44799996

### A.2 Comments