

# V&V Reference Report

## L2 ASCDS Version : 8.4.5

Observation 603 - L2 Version 3  
Chandra X-Ray Center

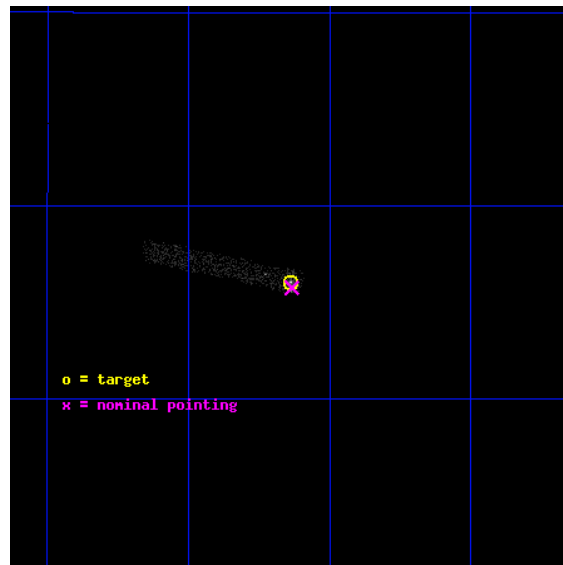
L2 Processing Date : Sep 16 2012

## Contents

<b>1</b>	<b>Front</b>	<b>2</b>
<b>2</b>	<b>OBI</b>	<b>3</b>
2.1	OBI . . . . .	3
2.1.1	Images . . . . .	3
2.1.2	Bias . . . . .	3
2.1.3	Parameters . . . . .	4
2.1.4	Events . . . . .	4
2.2	Compared Parameters . . . . .	5
2.3	Aspect . . . . .	6
2.4	Star Slots . . . . .	9
2.4.1	Slot 3 . . . . .	9
2.4.2	Slot 4 . . . . .	10
2.4.3	Slot 5 . . . . .	11
2.4.4	Slot 6 . . . . .	12
2.4.5	Slot 7 . . . . .	13
2.5	FID Slots . . . . .	14
2.5.1	Slot 0 . . . . .	14
2.5.2	Slot 1 . . . . .	15
2.5.3	Slot 2 . . . . .	16
<b>A</b>	<b>Summary</b>	<b>17</b>
A.1	Status . . . . .	17
A.2	Comments . . . . .	17

# 1 Front

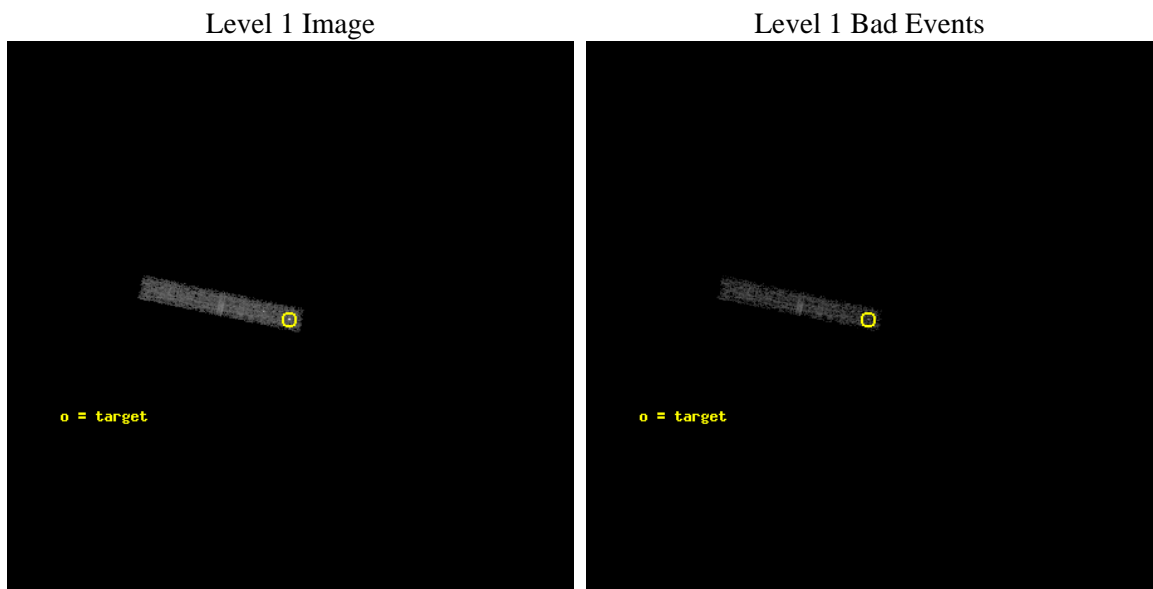
seq_num	200077	Sequence number
obs_id	603	Observation id
title	OBSERVATION OF MASSIVE BINARY	Proposal title
observer	Professor Gordon Garmire	Principal investigator
object	LAMBDA ORIONIS	Source name
dtcycle	0	&#160
cycle	P	events from which exps? Prim/Second/Both
ra_targ	83.7845	Observer's specified target RA [deg]
dec_targ	9.934167	Observer's specified target Dec [deg]
ra_nom	83.783535012351	Nominal RA [deg]
dec_nom	9.9294276655154	Nominal Dec [deg]
roll_nom	282.02949077248	Nominal Roll [deg]
revision	3	Processing version of data
ontime	10234.5	Sum of GTIs [s]
livetime	9458.1731480112	Livetime [s]
ontime3	10234.5	Sum of GTIs [s]
l2events	4658	Number of level 2 events



## 2 OBI

### 2.1 OBI

#### 2.1.1 Images



#### 2.1.2 Bias

Chip 3



### 2.1.3 Parameters

obi_num	0	Obi number	sched_exp_time	10070.000000	[s] Scheduled observation exposure time
ascdsver	8.4.5	Processing system revision	ontime	10234.5	Sum of GTIs [s]
caldsver	4.5.1.1	&#160	ontime3	10234.5	Sum of GTIs [s]
date	2012-09-16T02:57:40	Date and time of file creation	l1events	17223	Number of level 1 events
revision	3	Processing version of data			

### 2.1.4 Events

	<b>ccd 3</b>
level 1 events	17223
rejected events	12281
rejected %	71%

	<b>ccd 3</b>
grade 0 events	3833
	22%
grade 1 events	75
	0%
grade 2 events	417
	2%
grade 3 events	346
	2%
grade 4 events	290
	1%
grade 5 events	358
	2%
grade 6 events	171
	0%
grade 7 events	11733
	68%

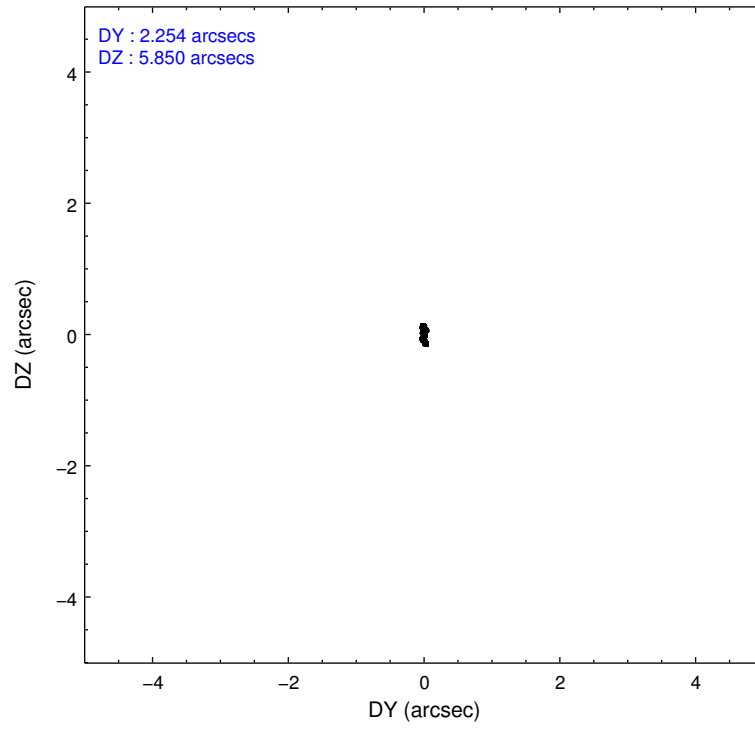
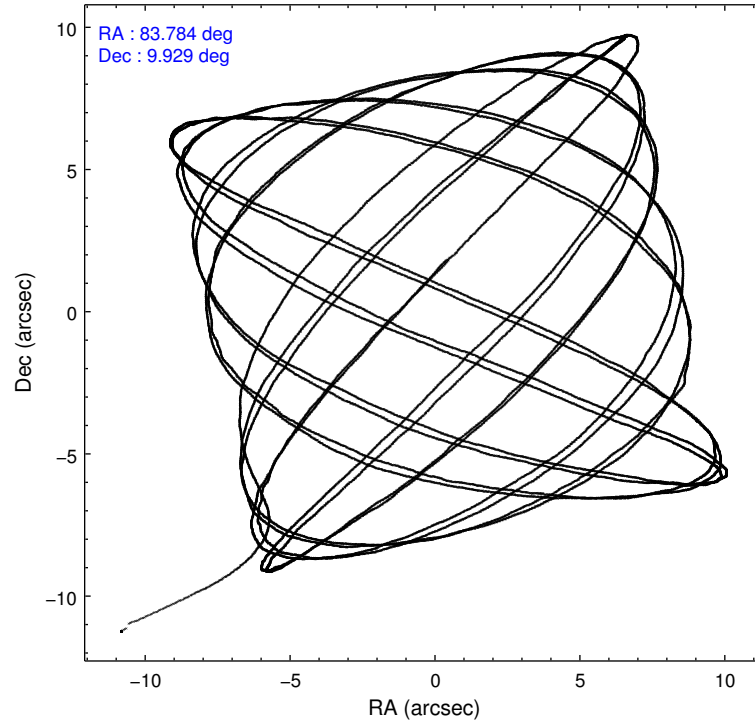


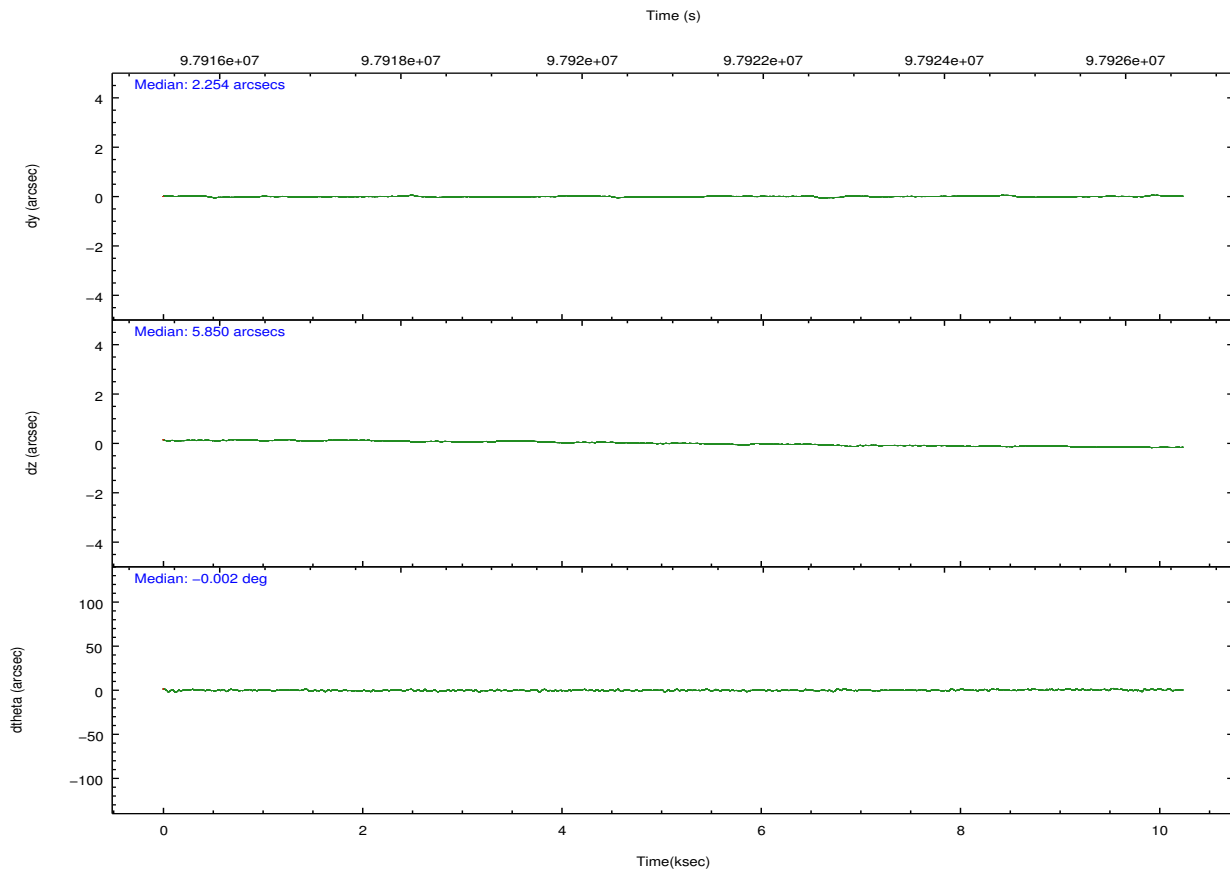
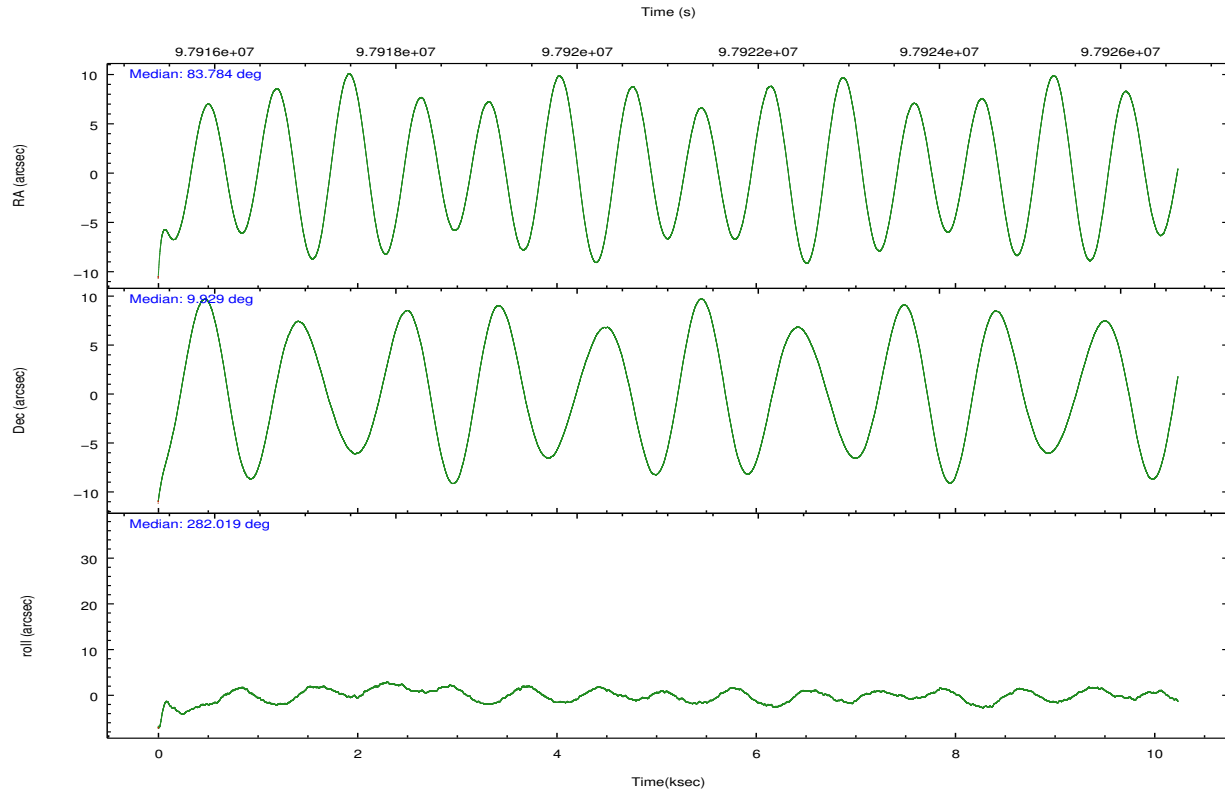
## 2.2 Compared Parameters

Parameter	Planned	Actual
Instrument	ACIS	ACIS
Detector	ACIS-3	ACIS-3
Grating	NONE	NONE
Data mode	VFAINT	VFAINT
Observation mode	POINTING	POINTING
[deg] Pointing RA	83.764915	83.78353501235087
[deg] Pointing Dec	9.949876	9.929427665515355
[deg] Pointing Roll	281.824026	282.0294907724766
[mm] SIM focus pos	-0.782348	-0.7809083437167272
[mm] SIM defocus	0	0.001439871863259334
[mm] SIM translation stage pos	-233.592463	-233.5874344608287
[mm] SIM translation stage offset	0	-0.005018542100998502
[s] Observation start time (MET)	97916050.184000	97915087.687544
Observation start date	2001-02-07T06:53:06	2001-02-07T06:38:07
[s] Observation end time (MET)	97926120.184000	97927037.138004
Observation end date	2001-02-07T09:40:56	2001-02-07T09:57:17
Read mode	TIMED	TIMED

Parameter	Planned	Actual
Obspar format version number	7	7
Obspar file type	PREDICTED	ACTUAL
Obspar update status	NONE	UPDATED
Number of optional ACIS chips dropped	0	0
On-chip summing requested	N	N
Subarray requested	CUSTOM	1/8
Subarray start row	896	896
Subarray row count	128	128
Alternating exposures requested	N	N
[s] Primary exposure time	0.000000	0.5

## 2.3 Aspect



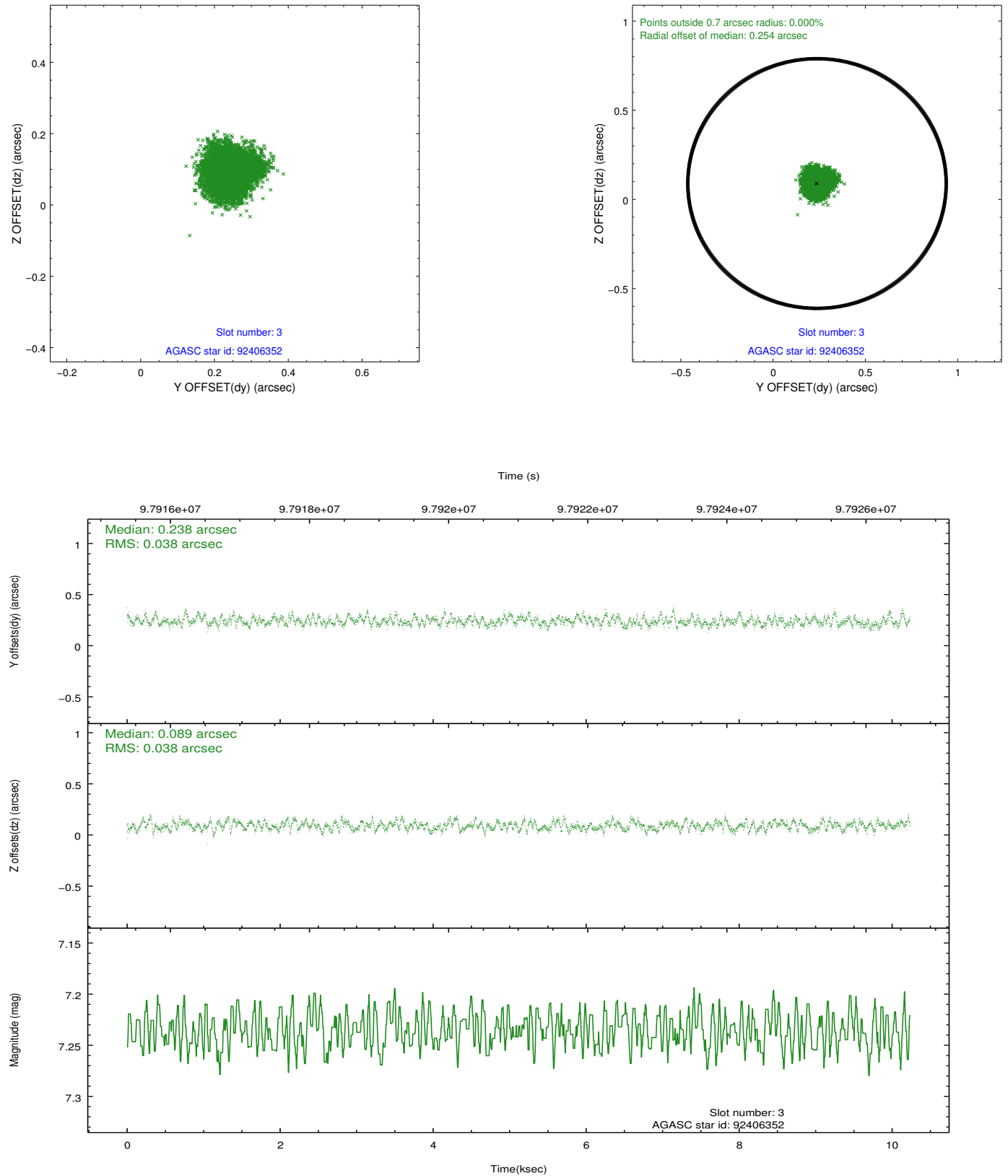


### Slot Statistics

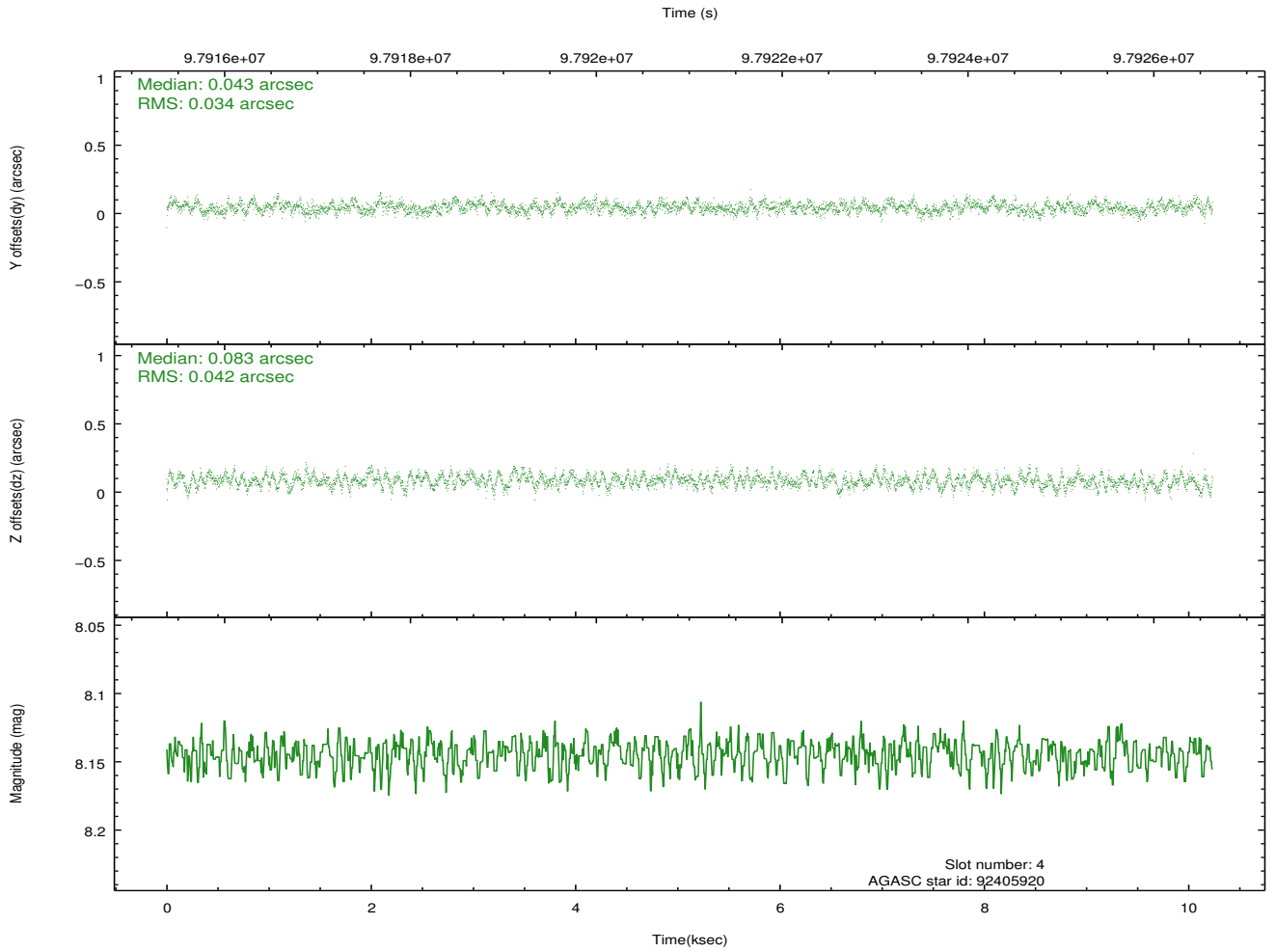
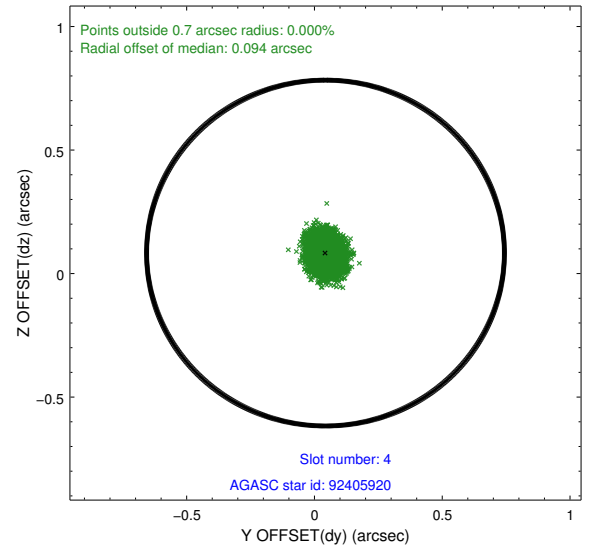
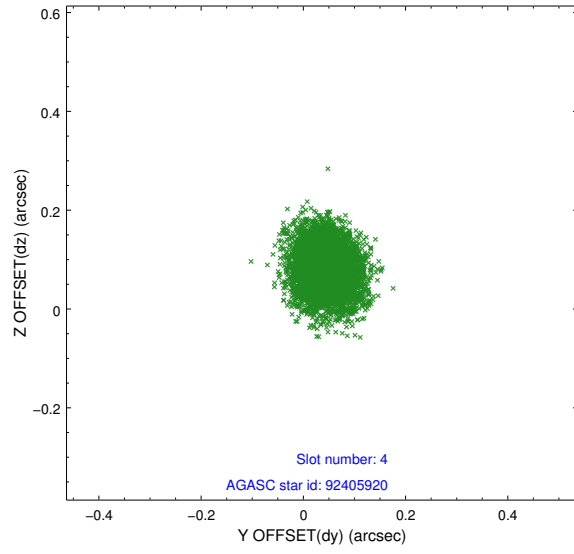
slot	status	id	mag	n_pts	med_dy	med_dz	dr1	dr2	ra	dec	mean_y	mean_z
0	FID	ACIS-I-2	7.15	2497	-0.034	-0.064	0.013	0.022	0.000000	0.000000	-756.64	-835.64
1	FID	ACIS-I-4	7.18	2497	-0.007	0.045	0.010	0.025	0.000000	0.000000	2157.20	1070.39
2	FID	ACIS-I-5	7.23	2497	-0.058	0.088	0.011	0.018	0.000000	0.000000	-1809.84	1068.86
3	GUIDE	92406352	7.24	4993	0.238	0.089	0.058	0.090	83.803317	9.613262	1214.49	-114.71
4	GUIDE	92405920	8.14	4988	0.043	0.083	0.058	0.095	84.148023	9.865405	575.59	1267.86
5	GUIDE	92410104	6.79	4993	-0.110	-0.001	0.034	0.056	84.249463	10.459117	-1444.31	2054.83
6	GUIDE	92407600	8.83	4990	-0.043	-0.095	0.085	0.135	83.136466	9.669683	528.56	-2388.94
7	GUIDE	92411856	8.72	4992	-0.131	-0.071	0.090	0.139	83.145771	10.083006	-920.22	-2050.13

## 2.4 Star Slots

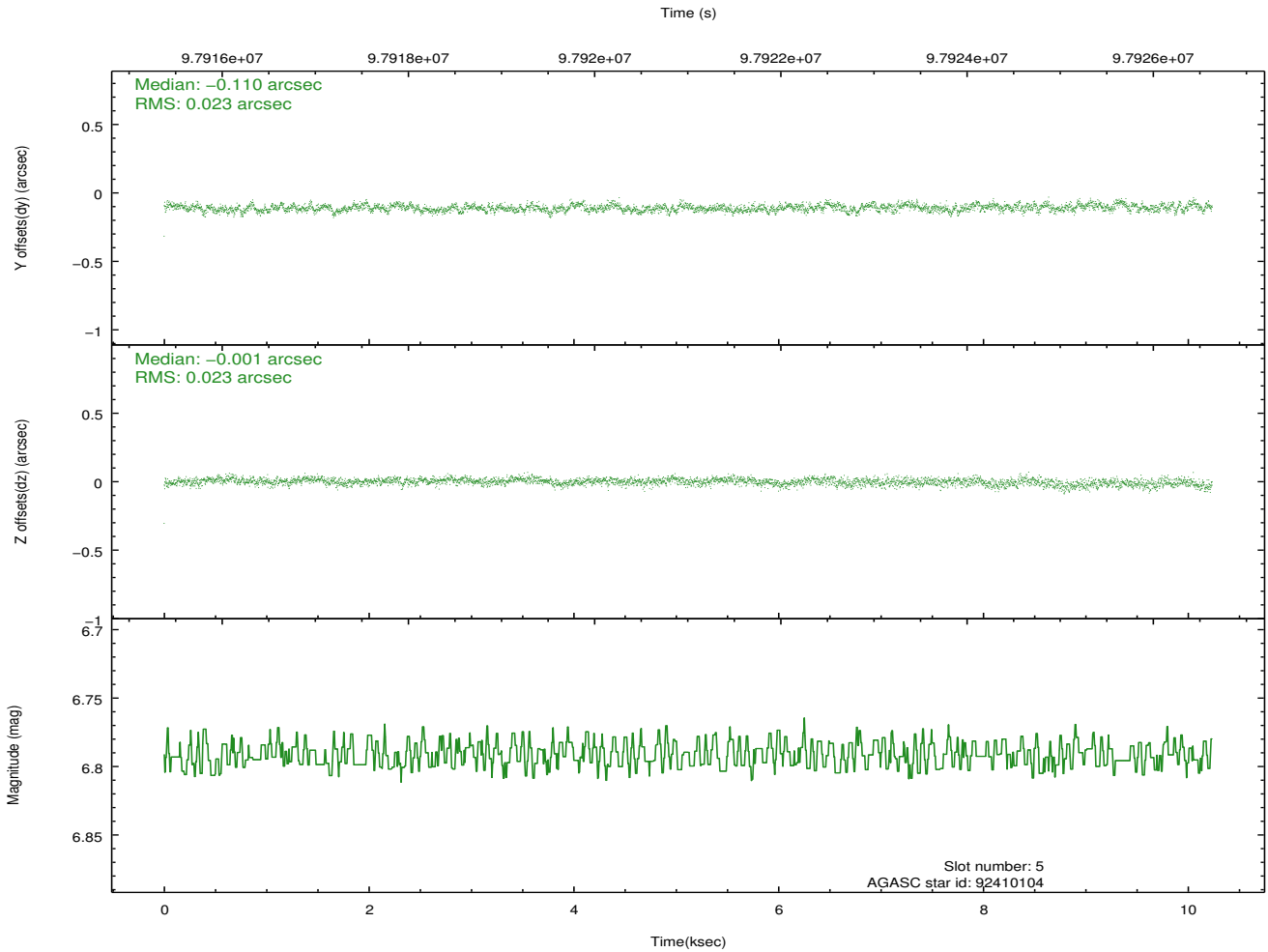
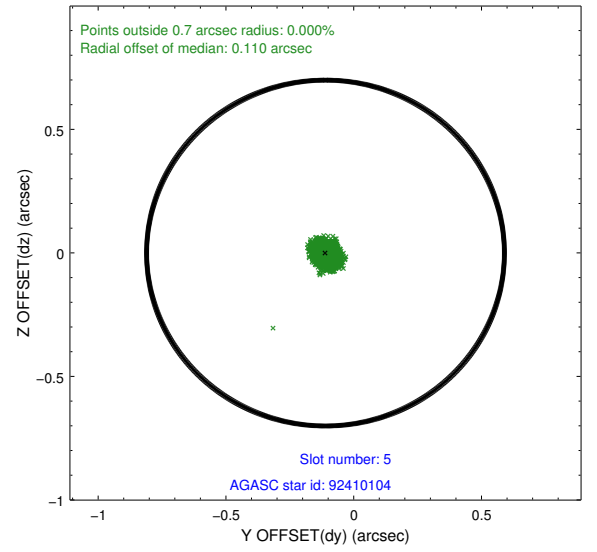
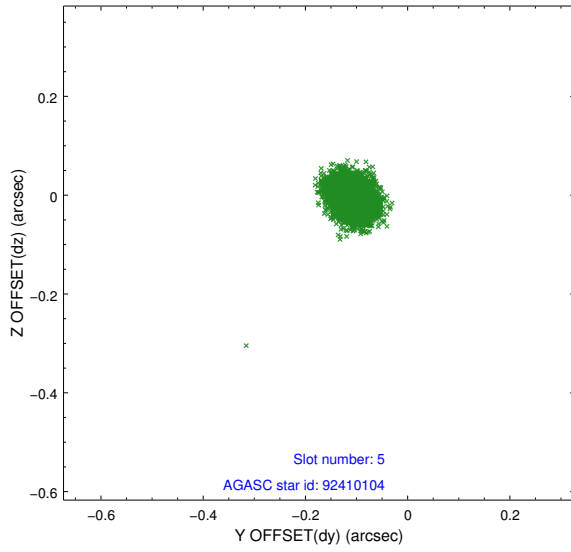
### 2.4.1 Slot 3



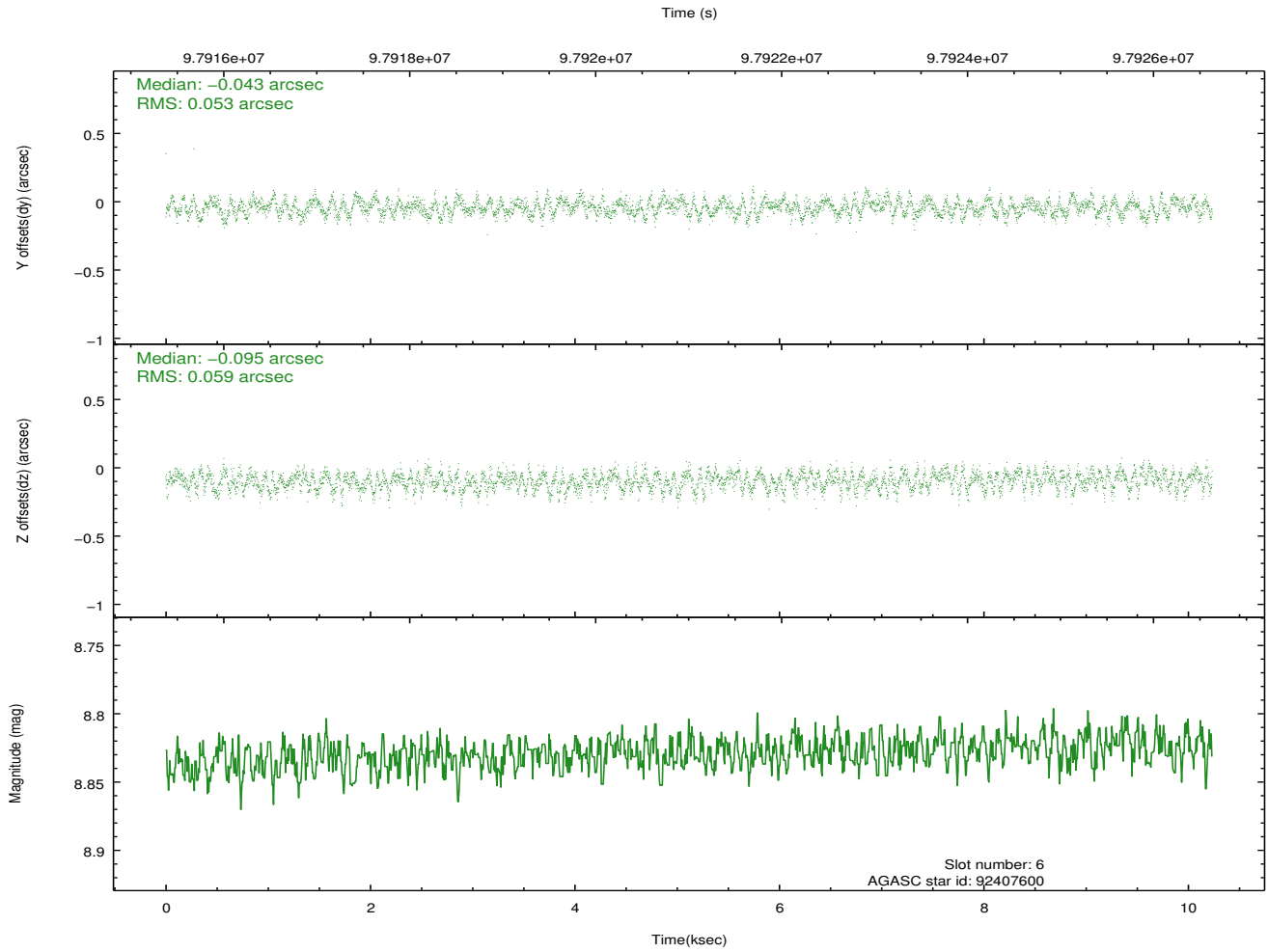
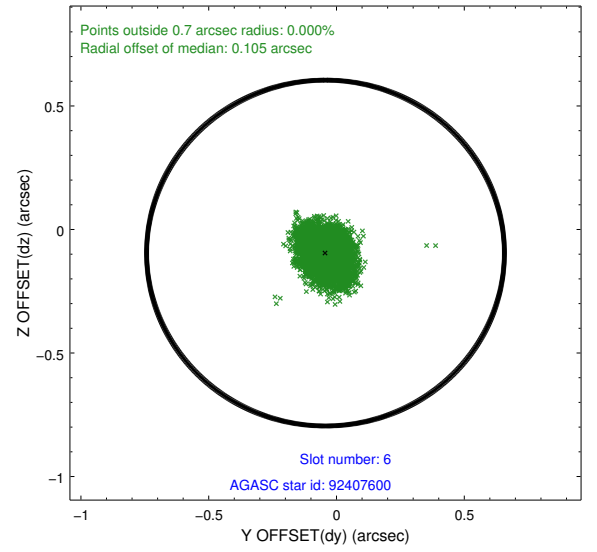
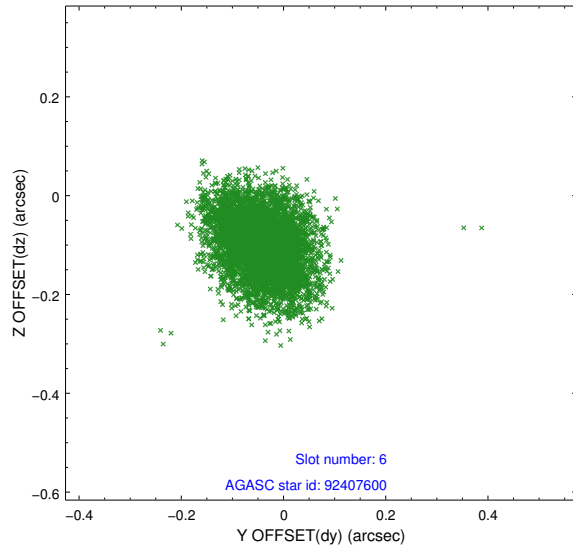
## 2.4.2 Slot 4



### 2.4.3 Slot 5

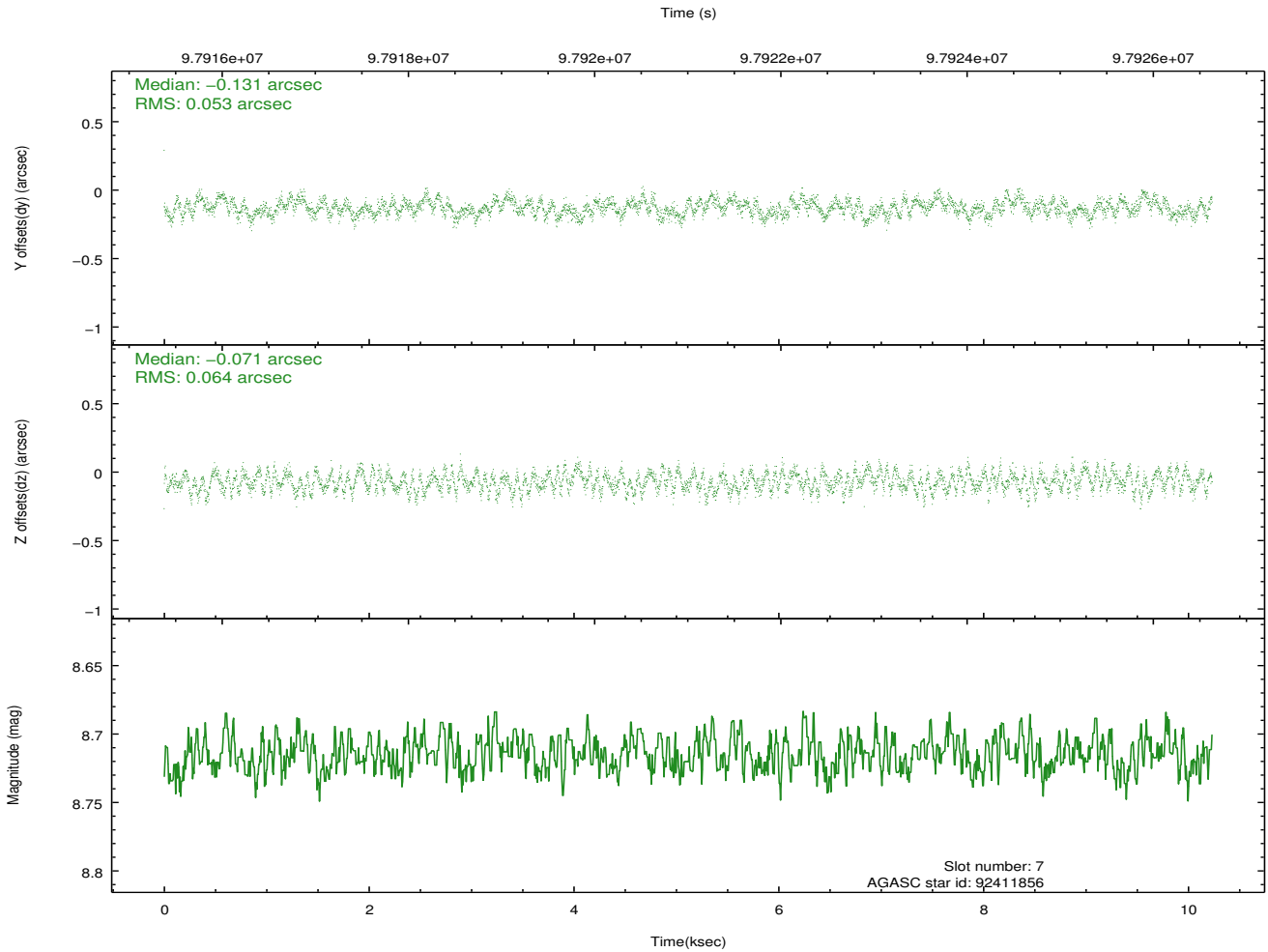
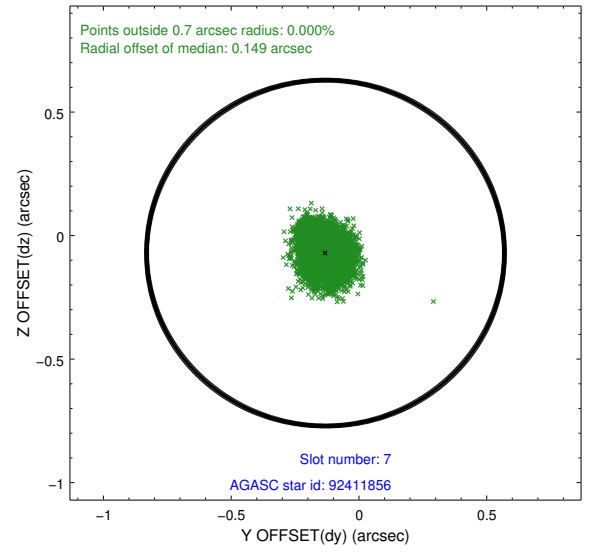
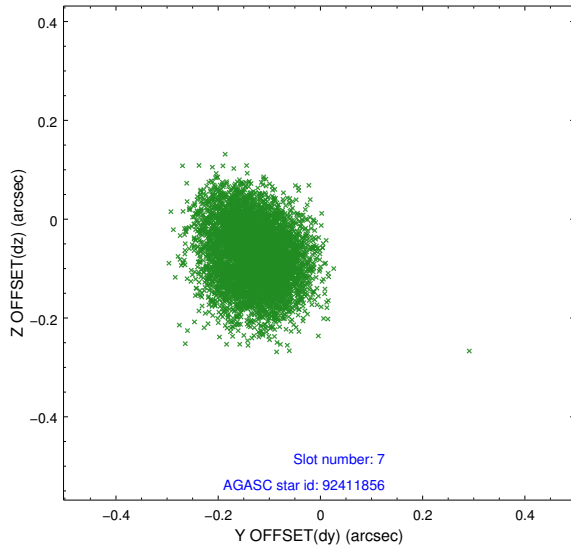


## 2.4.4 Slot 6



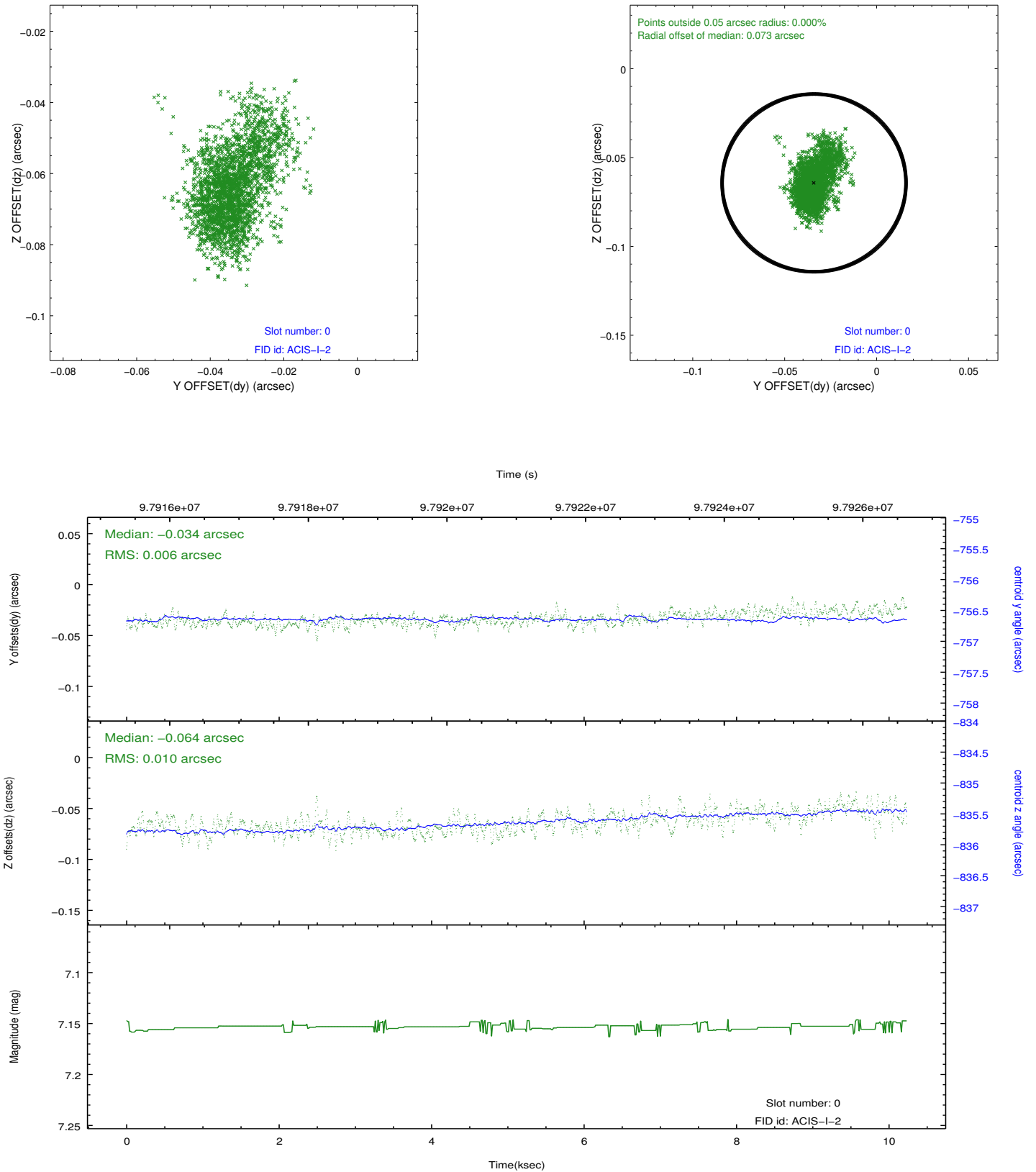


## 2.4.5 Slot 7

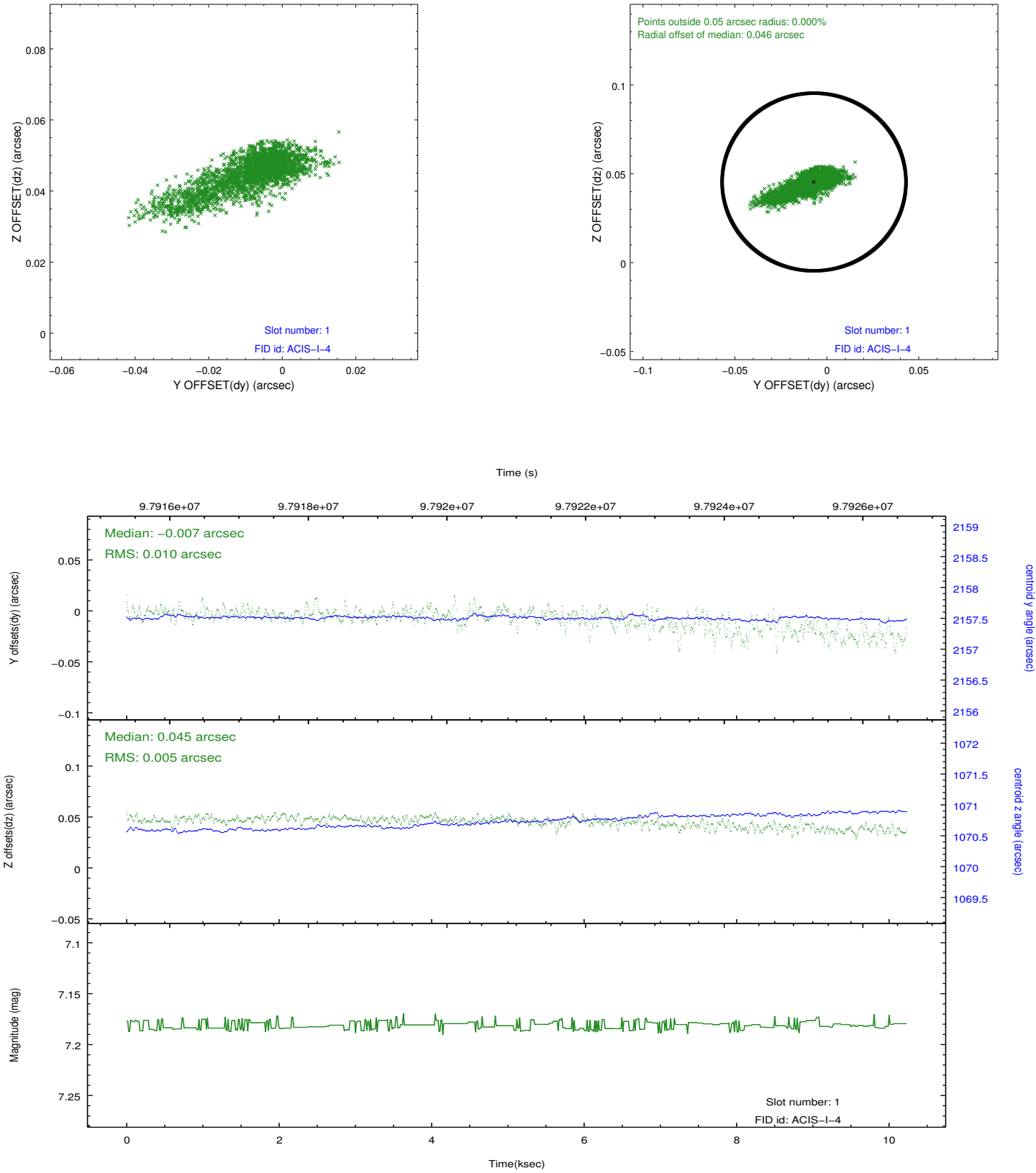


## 2.5 FID Slots

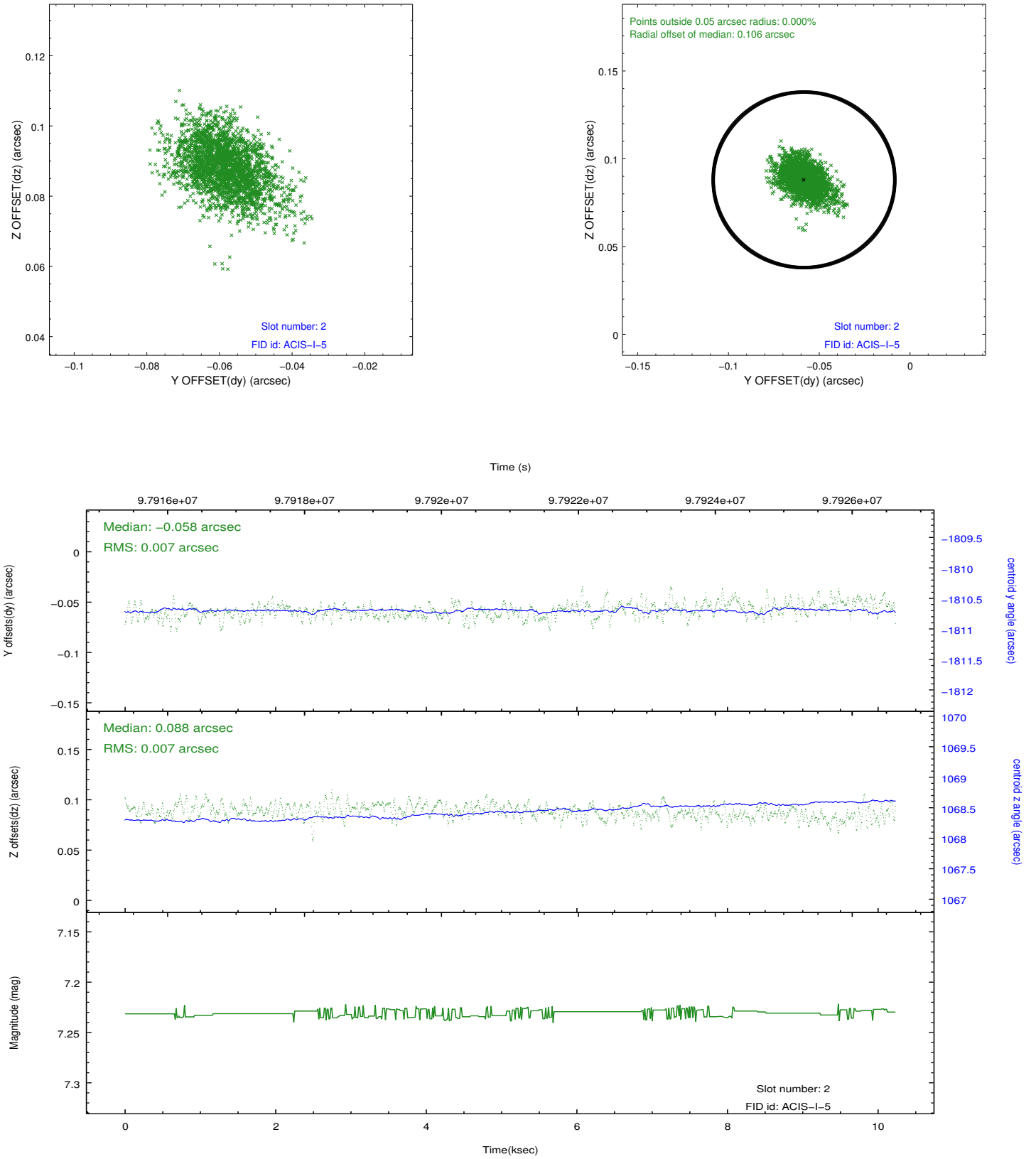
### 2.5.1 Slot 0



## 2.5.2 Slot 1



### 2.5.3 Slot 2



## **A Summary**

### **A.1 Status**

V&V Scientist	Jen Lauer
V&V Date (YYYY-MM-DD)	2012.09.19
V&V Edition	1
V&V Disposition and Status	OK
V&V Charge Time	10.234

### **A.2 Comments**