

# V&V Reference Report

## L2 ASCDS Version : 7.6.7.2

Observation 60293 - L2 Version 001  
Chandra X-Ray Center

L2 Processing Date : May 27 2006

## Contents

<b>1</b>	<b>Front</b>	<b>2</b>
<b>2</b>	<b>OBI</b>	<b>3</b>
2.1	OBI . . . . .	3
2.1.1	Images . . . . .	3
2.1.2	Bias . . . . .	3
2.1.3	Parameters . . . . .	4
2.1.4	Events . . . . .	4
2.2	Compared Parameters . . . . .	5
2.3	Aspect . . . . .	6
2.4	Star Slots . . . . .	8
2.5	FID Slots . . . . .	8
<b>A</b>	<b>Summary</b>	<b>9</b>
A.1	Status . . . . .	9
A.2	Comments . . . . .	9

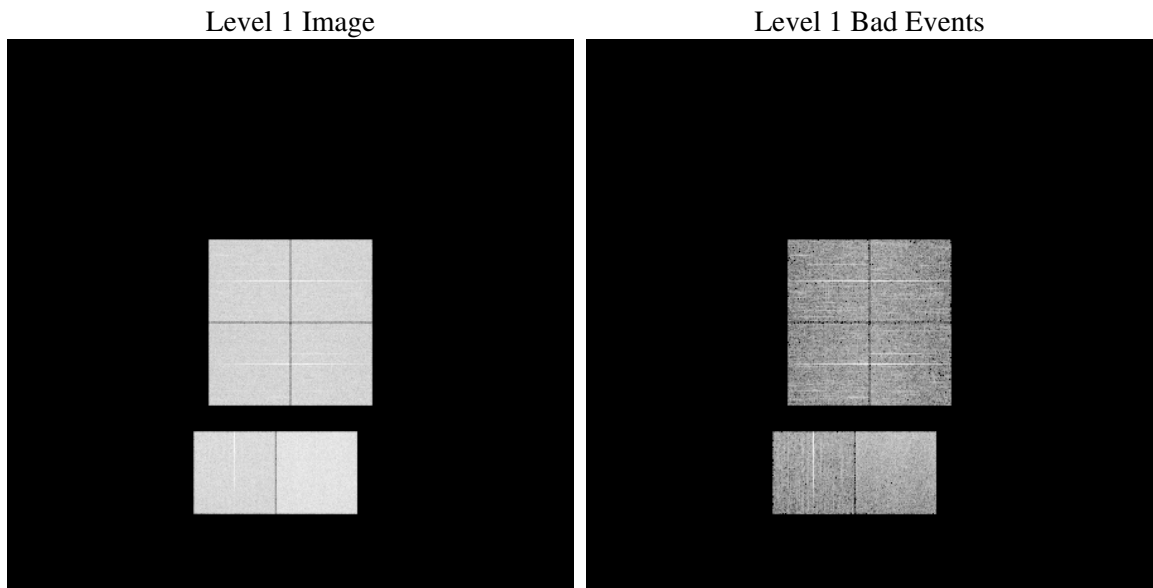
# 1 Front

seq_num	&#160
obs_id	60293
title	ACIS-012367 diagnostics
observer	CHANDRA engineering request/realtime commanding
object	&#160
dtcycle	0
cycle	P
ra_targ	0.0
dec_targ	0.0
ra_nom	38.976627429668
dec_nom	-52.024692992237
roll_nom	206.88263507769
revision	2
ontime	7804.7833344638
livetime	7705.9544684065
ontime0	5565.3188326955
ontime1	5688.5164529085
ontime2	5354.6308150887
ontime3	5581.4418532848
ontime6	6009.4542600513
ontime7	7804.7833344638
l2events	1119055

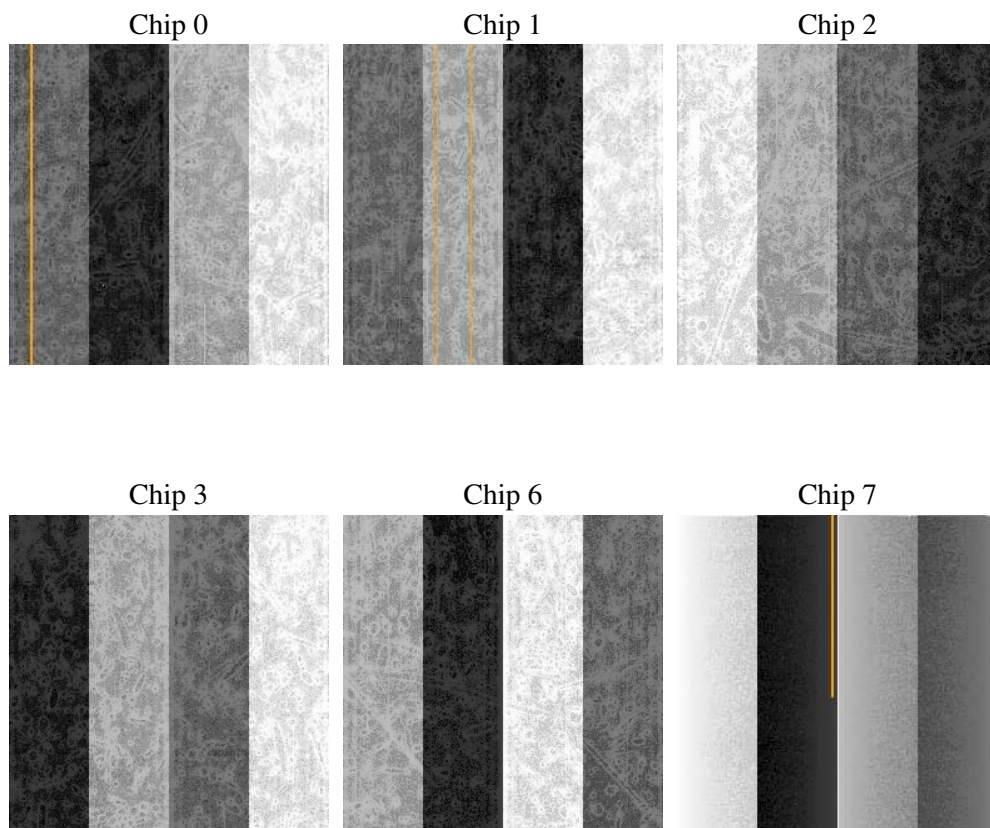
## 2 OBI

### 2.1 OBI

#### 2.1.1 Images



#### 2.1.2 Bias



### 2.1.3 Parameters

obi_num	0
ascdsver	7.6.7.2
caldsver	3.2.2
date	2006-05-27T15:57:46
revision	2

sched_exp_time	0.0
ontime	7807.5674831569
ontime0	5568.0619413853
ontime1	5691.218521595
ontime2	5357.3983273208
ontime3	5584.2670419812
ontime6	6012.0742487609
ontime7	7807.5674831569
l1events	1417204

### 2.1.4 Events

	ccd 0	ccd 1	ccd 2	ccd 3	ccd 6	ccd 7
level 1 events	215118	218581	210356	218085	241993	313071
rejected events	36989	36560	36989	38019	41133	53733
rejected %	17%	16%	17%	17%	16%	17%

	ccd 0	ccd 1	ccd 2	ccd 3	ccd 6	ccd 7
grade 0 events	97694	99559	97313	101162	109179	46122
	45%	45%	46%	46%	45%	14%
grade 1 events	529	483	555	597	554	139
	0%	0%	0%	0%	0%	0%
grade 2 events	31183	32107	29137	30760	34435	78098
	14%	14%	13%	14%	14%	24%
grade 3 events	11487	11751	11435	11794	12463	18903
	5%	5%	5%	5%	5%	6%
grade 4 events	11584	11714	11258	11606	12495	18745
	5%	5%	5%	5%	5%	5%
grade 5 events	2506	2450	2258	2540	2842	6592
	1%	1%	1%	1%	1%	2%
grade 6 events	26275	26981	24330	24848	32392	97607
	12%	12%	11%	11%	13%	31%
grade 7 events	33860	33536	34070	34778	37633	46865
	15%	15%	16%	15%	15%	14%

## 2.2 Compared Parameters

Parameter	Planned	Actual	Parameter	Planned	Actual
Instrument	ACIS	ACIS	Obspar format version number	6	6
Detector	ACIS-012367	ACIS-012367	Obspar file type	PREDICTED	ACTUAL
Grating	NONE	NONE	Obspar update status	NONE	UPDATED
Data mode	FAINT	FAINT	On-chip summing requested	N	N
Observation mode	SECONDARY	SECONDARY	Subarray requested	NONE	NONE
Pointing RA	0	38.97662742966801	Alternating exposures requested	N	N
Pointing Dec	0	-52.02469299223677	Primary exposure time	0.000000	3.2
Pointing Roll	0.0	206.8826350776936			
SIM focus pos (mm)	-0.782348	-0.6828225247311905			
SIM defocus (mm)	0	0.8505141146731063			
SIM translation stage pos (mm)	-233.592463	250.466033080201			
SIM translation stage offset (mm)	0	-0.01005468664627074			
Observation start time	197611327.298975	197611326.274			
Observation start date	2004-04-06T04:02:07	2004-04-06T04:02:06			
Observation end time	197628744.099739	197628743.07476			
Observation end date	2004-04-06T08:52:24	2004-04-06T08:52:23			
Read mode	TIMED	TIMED			

## 2.3 Aspect



## **2.4 Star Slots**

## **2.5 FID Slots**



## A Summary

### A.1 Status

V&V Scientist	Jen Lauer
V&V Date (YYYY-MM-DD)	2006.05.30
V&V Edition	1
V&V Disposition and Status	OK
V&V Charge Time	7.80478333

### A.2 Comments