

V&V Reference Report

L2 ASCDS Version : 7.6.7.2

Observation 60093 - L2 Version 001
Chandra X-Ray Center

L2 Processing Date : Apr 25 2006

Contents

1	Front	2
2	OBI	3
2.1	OBI	3
2.1.1	Images	3
2.1.2	Bias	3
2.1.3	Parameters	4
2.1.4	Events	4
2.2	Compared Parameters	5
2.3	Aspect	6
2.4	Star Slots	8
2.5	FID Slots	8
A	Summary	9
A.1	Status	9
A.2	Comments	9

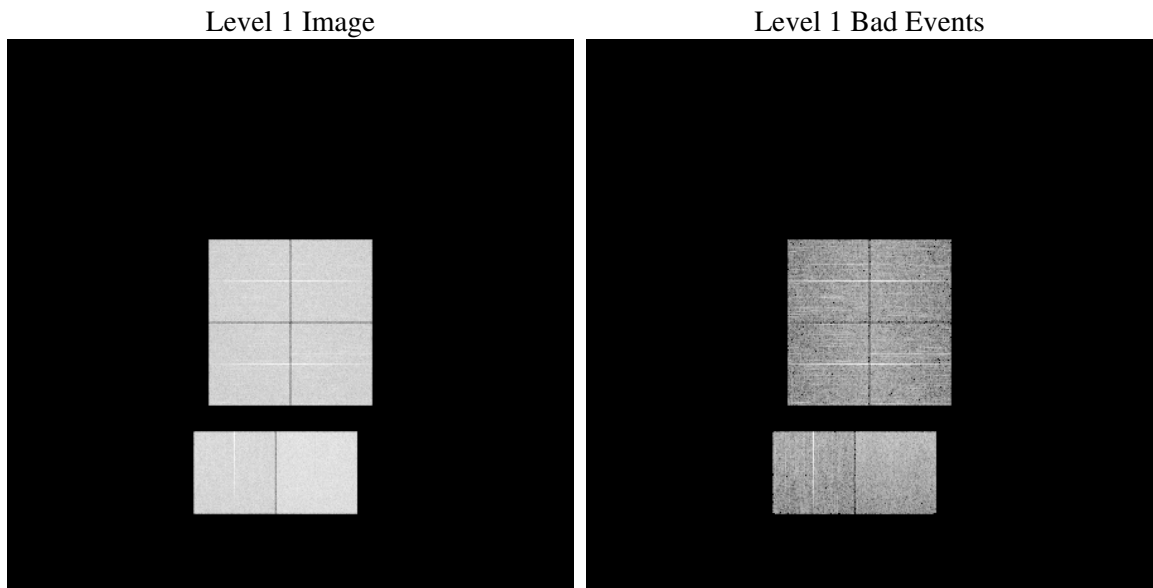
1 Front

seq_num	
obs_id	60093
title	ACIS-012367 diagnostics
observer	CHANDRA engineering request/realtime commanding
object	
dtcycle	0
cycle	P
ra_targ	0.0
dec_targ	0.0
ra_nom	326.31298874857
dec_nom	-18.98516896159
roll_nom	3.0146849214674
revision	2
ontime	7803.85774225
livetime	7705.0405965986
ontime0	6141.28151685
ontime1	6245.0341446996
ontime2	5849.6768803298
ontime3	6005.0785061717
ontime6	6478.4659439325
ontime7	7803.85774225
l2events	1081134

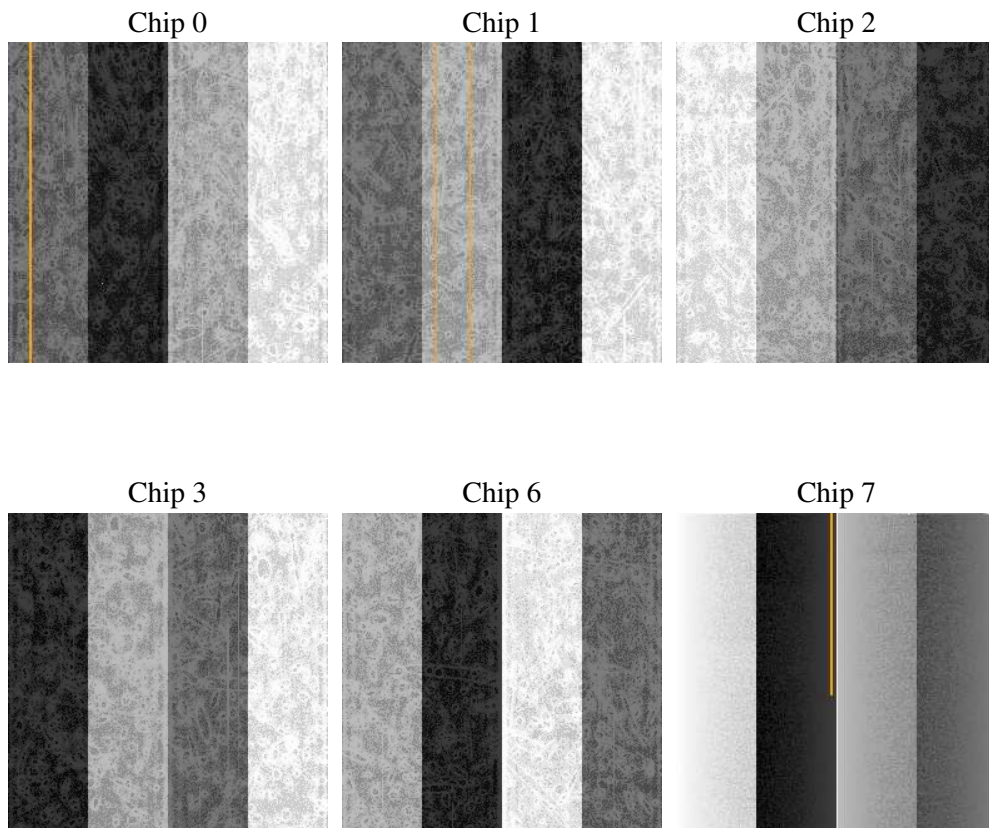
2 OBI

2.1 OBI

2.1.1 Images



2.1.2 Bias



2.1.3 Parameters

obi_num	0
ascdsver	7.6.7.2
caldsver	3.2.1
date	2006-04-25T07:44:03
revision	2

sched_exp_time	0.0
ontime	7804.3348069787
ontime0	6141.7175415754
ontime1	6245.4291294217
ontime2	5850.0308250487
ontime3	6005.5966109037
ontime6	6478.7788486779
ontime7	7804.3348069787
l1events	1414049

2.1.4 Events

	ccd 0	ccd 1	ccd 2	ccd 3	ccd 6	ccd 7
level 1 events	219658	222116	213600	219089	243361	296225
rejected events	42991	42429	43030	44853	47164	58187
rejected %	19%	19%	20%	20%	19%	19%

	ccd 0	ccd 1	ccd 2	ccd 3	ccd 6	ccd 7
grade 0 events	97401	98478	95577	97569	106498	41014
	44%	44%	44%	44%	43%	13%
grade 1 events	573	529	622	602	584	95
	0%	0%	0%	0%	0%	0%
grade 2 events	30856	31785	28994	29736	34063	72059
	14%	14%	13%	13%	13%	24%
grade 3 events	11484	11616	11065	11573	12407	17232
	5%	5%	5%	5%	5%	5%
grade 4 events	11346	11502	11055	11519	12115	16862
	5%	5%	5%	5%	4%	5%
grade 5 events	2742	2824	2662	2969	3202	6836
	1%	1%	1%	1%	1%	2%
grade 6 events	25580	26306	23879	23839	31114	90871
	11%	11%	11%	10%	12%	30%
grade 7 events	39676	39076	39746	41282	43378	51256
	18%	17%	18%	18%	17%	17%

2.2 Compared Parameters

Parameter	Planned	Actual	Parameter	Planned	Actual
Instrument	ACIS	ACIS	Obspar format version number	6	6
Detector	ACIS-012367	ACIS-012367	Obspar file type	PREDICTED	ACTUAL
Grating	NONE	NONE	Obspar update status	NONE	UPDATED
Data mode	FAINT	FAINT	On-chip summing requested	N	N
Observation mode	SECONDARY	SECONDARY	Subarray requested	NONE	NONE
Pointing RA	0	326.3129887485701	Alternating exposures requested	N	N
Pointing Dec	0	-18.98516896158991	Primary exposure time	3.2	3.2
Pointing Roll	0.0	3.014684921467444			
SIM focus pos (mm)	-0.782348	-0.7809083437167272			
SIM defocus (mm)	0	0.7524282956875696			
SIM translation stage pos (mm)	-233.592463	250.466033080201			
SIM translation stage offset (mm)	0	-0.01005468664627074			
Observation start time	209029149.254226	209029148.22922			
Observation start date	2004-08-16T07:39:09	2004-08-16T07:39:08			
Observation end time	209050957.155197	209050956.13019			
Observation end date	2004-08-16T13:42:37	2004-08-16T13:42:36			
Read mode	TIMED	TIMED			

2.3 Aspect

2.4 Star Slots

2.5 FID Slots

A Summary

A.1 Status

V&V Scientist	Jen Lauer
V&V Date (YYYY-MM-DD)	2006.04.25
V&V Edition	1
V&V Disposition and Status	OK
V&V Charge Time	7.80385774

A.2 Comments