

V&V Reference Report

L2 ASCDS Version : 7.6.7

Observation 59733 - L2 Version 002
Chandra X-Ray Center

L2 Processing Date: Feb 27 2006

Contents

1	Front	2
2	OBI	3
2.1	OBI	3
2.1.1	Images	3
2.1.2	Bias	3
2.1.3	Parameters	4
2.1.4	Events	4
2.2	Compared Parameters	5
2.3	Aspect	6
2.4	Star Slots	8
2.5	FID Slots	8
A	Summary	9
A.1	Status	9
A.2	Comments	9

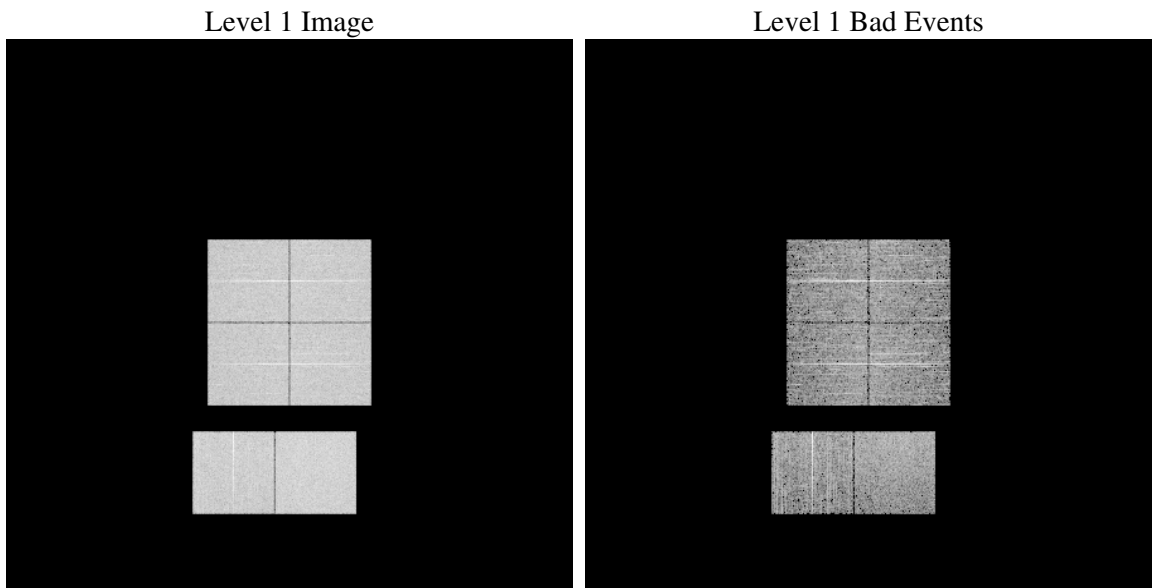
1 Front

seq_num	
obs_id	59733
title	ACIS-012367 diagnostics
observer	CHANDRA engineering request/realtime commanding
object	
dtcycle	0
cycle	P
ra_targ	0.0
dec_targ	0.0
ra_nom	45.013234340976
dec_nom	-7.7259174580561
roll_nom	263.97075955965
revision	2
ontime	4620.5771497786
livetime	4562.0686197306
ontime0	4160.4017376304
ontime1	4247.9488351941
ontime2	4034.0865555406
ontime3	4144.1148761511
ontime6	4303.12741974
ontime7	4620.5771497786
l2events	626059

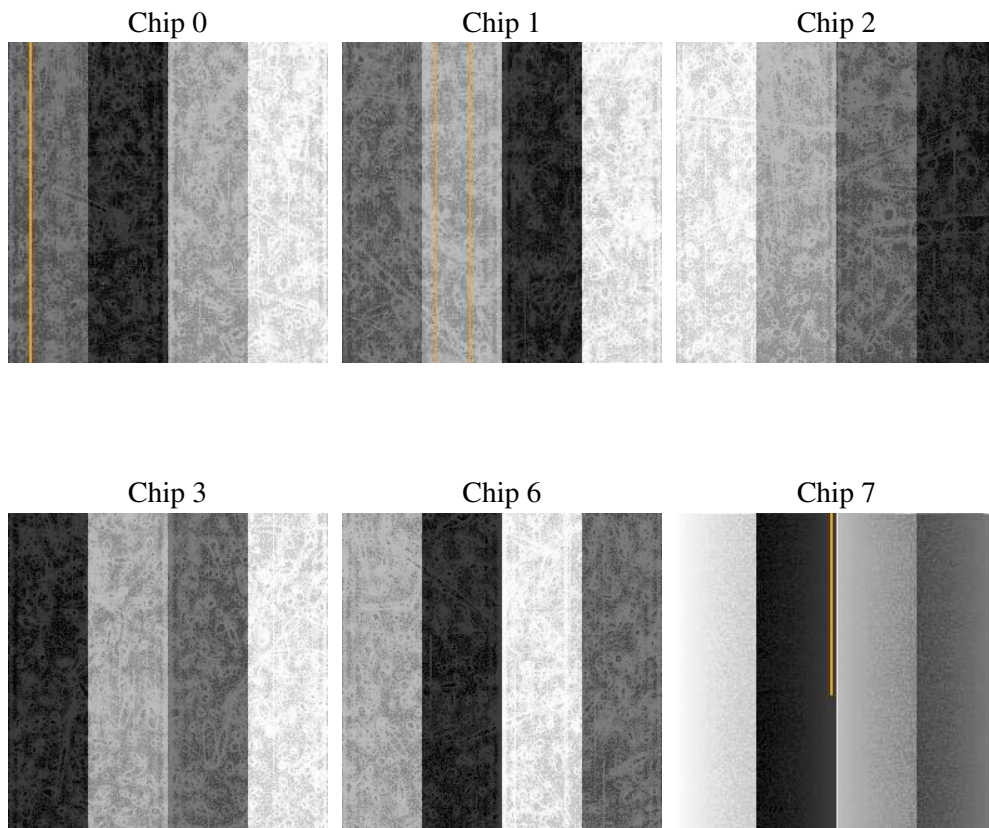
2 OBI

2.1 OBI

2.1.1 Images



2.1.2 Bias



2.1.3 Parameters

obi_num	0
ascdsver	7.6.7
caldbver	3.2.1
date	2006-02-27T18:09:57
revision	2

sched_exp_time	0.0
ontime	4621.6656295359
ontime0	4161.4491773844
ontime1	4248.9552349448
ontime2	4035.051915288
ontime3	4145.2443959117
ontime6	4304.0517395139
ontime7	4621.6656295359
l1events	845002

2.1.4 Events

	ccd 0	ccd 1	ccd 2	ccd 3	ccd 6	ccd 7
level 1 events	134632	137816	132024	136563	145481	158486
rejected events	29794	30533	29088	30755	32679	34009
rejected %	22%	22%	22%	22%	22%	21%

	ccd 0	ccd 1	ccd 2	ccd 3	ccd 6	ccd 7
grade 0 events	57312	58561	57696	59425	61149	20558
	42%	42%	43%	43%	42%	12%
grade 1 events	305	308	348	391	313	57
	0%	0%	0%	0%	0%	0%
grade 2 events	18601	19134	17304	17931	19546	38012
	13%	13%	13%	13%	13%	23%
grade 3 events	6802	6840	6669	7013	6991	8783
	5%	4%	5%	5%	4%	5%
grade 4 events	6879	6914	6781	6890	7073	8384
	5%	5%	5%	5%	4%	5%
grade 5 events	1861	1876	1699	1963	2090	3879
	1%	1%	1%	1%	1%	2%
grade 6 events	15244	15834	14486	14549	18043	48740
	11%	11%	10%	10%	12%	30%
grade 7 events	27628	28349	27041	28401	30276	30073
	20%	20%	20%	20%	20%	18%

2.2 Compared Parameters

Parameter	Planned	Actual	Parameter	Planned	Actual
Instrument	ACIS	ACIS	Obspar format version number	6	6
Detector	ACIS-012367	ACIS-012367	Obspar file type	PREDICTED	ACTUAL
Grating	NONE	NONE	Obspar update status	NONE	UPDATED
Data mode	FAINT	FAINT	On-chip summing requested	N	N
Observation mode	SECONDARY	SECONDARY	Subarray requested	NONE	NONE
Pointing RA	0	45.01323434097606	Alternating exposures requested	N	N
Pointing Dec	0	-7.725917458056053	Primary exposure time	3.2	3.2
Pointing Roll	0.0	263.9707595596522			
SIM focus pos (mm)	-0.782348	-0.7809083437167272			
SIM defocus (mm)	0	0.7524282956875696			
SIM translation stage pos (mm)	-233.592463	250.466033080201			
SIM translation stage offset (mm)	0	-0.01005468664627074			
Observation start time	227540500.436116	227540499.41112			
Observation start date	2005-03-18T13:41:40	2005-03-18T13:41:39			
Observation end time	227576988.387771	227576987.36277			
Observation end date	2005-03-18T23:49:48	2005-03-18T23:49:47			
Read mode	TIMED	TIMED			

2.3 Aspect

2.4 Star Slots

2.5 FID Slots

A Summary

A.1 Status

V&V Scientist	Beth Sundheim
V&V Date (YYYY-MM-DD)	2006.02.27
V&V Edition	1
V&V Disposition and Status	OK
V&V Charge Time	4.62057714

A.2 Comments