

V&V Reference Report

L2 ASCDS Version : 8.5.1.1

Observation 59653 - L2 Version 3
Chandra X-Ray Center

L2 Processing Date : Dec 23 2012

Contents

| | | |
|----------|-------------------------------|----------|
| 1 | Front | 2 |
| 2 | OBI | 3 |
| 2.1 | OBI | 3 |
| 2.1.1 | Images | 3 |
| 2.1.2 | Bias | 3 |
| 2.1.3 | Parameters | 4 |
| 2.1.4 | Events | 4 |
| 2.2 | Compared Parameters | 5 |
| 2.3 | Star Slots | 6 |
| 2.4 | FID Slots | 6 |
| A | Summary | 7 |
| A.1 | Status | 7 |
| A.2 | Comments | 7 |

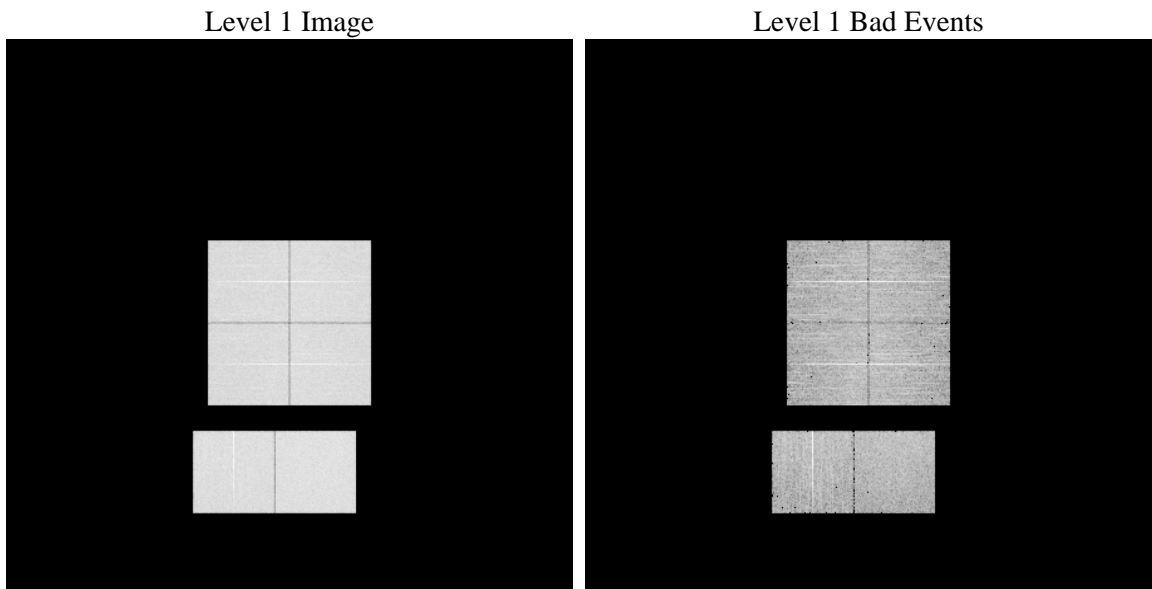
1 Front

| | | |
|----------|---|---|
| seq_num | | Sequence number |
| obs_id | 59653 | Observation id |
| title | ACIS-012367 diagnostics | Proposal title |
| observer | CHANDRA engineering request/realtime commanding | Principal investig |
| object | | Source name |
| dtcycle | 0 | |
| cycle | P | events from which exps? Prim/Second/Both |
| ra_targ | 0.0 | Observer's specified target RA [deg] |
| dec_targ | 0.0 | Observer's specified target Dec [deg] |
| ra_nom | 266.97756283527 | Nominal RA [deg] |
| dec_nom | -13.981369266645 | Nominal Dec [deg] |
| roll_nom | 106.57783289456 | Nominal Roll [deg] |
| revision | 3 | Processing version of data |
| ontime | 7801.5999709368 | Sum of GTIs [s] |
| livetime | 7702.8114145452 | Livetime [s] |
| ontime0 | 7195.5389364362 | Sum of GTIs [s] |
| ontime1 | 7380.2745516896 | Sum of GTIs [s] |
| ontime2 | 6900.6110392213 | Sum of GTIs [s] |
| ontime3 | 7152.2888640761 | Sum of GTIs [s] |
| ontime6 | 7486.3138242364 | Sum of GTIs [s] |
| ontime7 | 7801.5999709368 | Sum of GTIs [s] |
| l2events | 1059727 | Number of level 2 events |

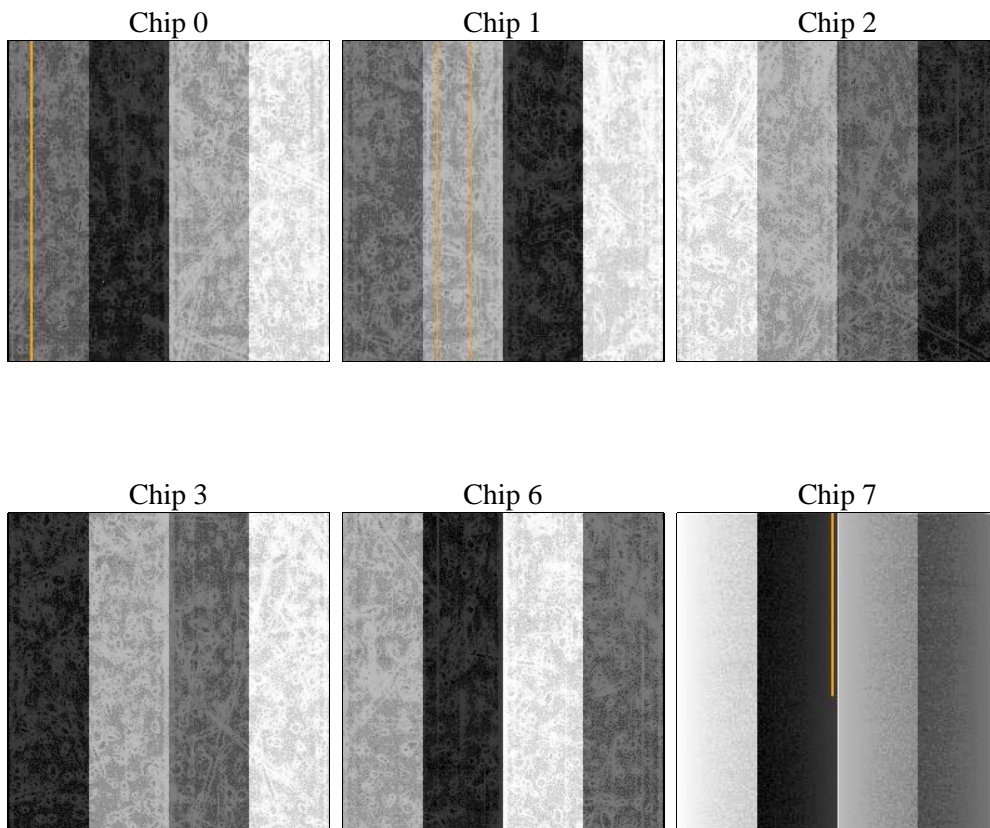
2 OBI

2.1 OBI

2.1.1 Images



2.1.2 Bias



2.1.3 Parameters

| | | | | | |
|----------|---------------------|--------------------------------|----------------|-----------------|---|
| obi_num | 2 | Obi number | sched_exp_time | 0.0 | [s] Scheduled observation exposure time |
| ascdsver | 8.5.1.1 | Processing system revision | ontime | 7801.5999709368 | Sum of GTIs [s] |
| caldbver | 4.5.5 | | ontime0 | 7195.5389364362 | Sum of GTIs [s] |
| date | 2012-12-23T20:34:15 | Date and time of file creation | ontime1 | 7380.2745516896 | Sum of GTIs [s] |
| revision | 3 | Processing version of data | ontime2 | 6900.6110392213 | Sum of GTIs [s] |
| | | | ontime3 | 7152.2888640761 | Sum of GTIs [s] |
| | | | ontime6 | 7486.3138242364 | Sum of GTIs [s] |
| | | | ontime7 | 7801.5999709368 | Sum of GTIs [s] |
| | | | l1events | 1405924 | Number of level 1 events |

2.1.4 Events

| | ccd 0 | ccd 1 | ccd 2 | ccd 3 | ccd 6 | ccd 7 | | ccd 0 | ccd 1 | ccd 2 | ccd 3 | ccd 6 | ccd 7 |
|-----------------|--------|--------|--------|--------|--------|--------|----------------|-------|-------|-------|-------|--------|-------|
| level 1 events | 225099 | 230245 | 219891 | 227130 | 243955 | 259604 | grade 0 events | 97057 | 99644 | 95238 | 99310 | 103660 | 51181 |
| rejected events | 48134 | 47928 | 48581 | 49398 | 51124 | 46381 | | 43% | 43% | 43% | 43% | 42% | 19% |
| rejected % | 21% | 20% | 22% | 21% | 20% | 17% | grade 1 events | 530 | 499 | 594 | 620 | 551 | 150 |
| | | | | | | | | 0% | 0% | 0% | 0% | 0% | 0% |
| | | | | | | | grade 2 events | 31004 | 32439 | 29088 | 30480 | 33290 | 46706 |
| | | | | | | | | 13% | 14% | 13% | 13% | 13% | 17% |
| | | | | | | | grade 3 events | 11613 | 11527 | 11138 | 11595 | 12449 | 21133 |
| | | | | | | | | 5% | 5% | 5% | 5% | 5% | 8% |
| | | | | | | | grade 4 events | 11357 | 11585 | 11286 | 11541 | 11945 | 20766 |
| | | | | | | | | 5% | 5% | 5% | 5% | 4% | 7% |
| | | | | | | | grade 5 events | 2983 | 3126 | 2854 | 3233 | 3284 | 8150 |
| | | | | | | | | 1% | 1% | 1% | 1% | 1% | 3% |
| | | | | | | | grade 6 events | 26027 | 27215 | 24641 | 24806 | 31487 | 73550 |
| | | | | | | | | 11% | 11% | 11% | 10% | 12% | 28% |
| | | | | | | | grade 7 events | 44528 | 44210 | 45052 | 45545 | 47289 | 37968 |
| | | | | | | | | 19% | 19% | 20% | 20% | 19% | 14% |

2.2 Compared Parameters

| Parameter | Planned | Actual |
|-----------------------------------|---------------------|----------------------|
| Instrument | ACIS | ACIS |
| Detector | ACIS-012367 | ACIS-012367 |
| Grating | NONE | NONE |
| Data mode | FAINT | FAINT |
| Observation mode | SECONDARY | SECONDARY |
| [deg] Pointing RA | 0 | 266.9775628352726 |
| [deg] Pointing Dec | 0 | -13.98136926664505 |
| [deg] Pointing Roll | 0.0 | 106.577832894557 |
| [mm] SIM focus pos | -0.782348 | -1.428180813131781 |
| [mm] SIM defocus | 0 | 0.1051558262725154 |
| [mm] SIM translation stage pos | -233.592463 | 250.466033080201 |
| [mm] SIM translation stage offset | 0 | -0.01005468664627074 |
| [s] Observation start time (MET) | 233020937.885248 | 233020936.8603 |
| Observation start date | 2005-05-21T00:02:18 | 2005-05-21T00:02:16 |
| [s] Observation end time (MET) | 233041339.486175 | 233041338.46123 |
| Observation end date | 2005-05-21T05:42:19 | 2005-05-21T05:42:18 |
| Read mode | TIMED | TIMED |

| Parameter | Planned | Actual |
|---------------------------------|-----------|---------|
| Obspar format version number | 7 | 7 |
| Obspar file type | PREDICTED | ACTUAL |
| Obspar update status | NONE | UPDATED |
| On-chip summing requested | N | N |
| Subarray requested | NONE | NONE |
| Alternating exposures requested | N | N |
| [s] Primary exposure time | 3.2 | 3.2 |

2.3 Star Slots

2.4 FID Slots

A Summary

A.1 Status

| | |
|----------------------------|-----------------|
| V&V Scientist | Beth Sundheim |
| V&V Date (YYYY-MM-DD) | 2013.01.14 |
| V&V Edition | 1 |
| V&V Disposition and Status | OK |
| V&V Charge Time | 7.8015999709368 |

A.2 Comments